

LOCAL NEWS.

FRIDAY, AUGUST 30, 1895.

Advertisers Can Reach

The Colored People of Des Moines and Iowa Only Through the Iowa State Bystander.

DES MOINES PASSENGER TRAINS

Table with columns for C. R. L. & P. GOING EAST, DEPART, and DESTINATION. Lists various train routes and departure times.

Table with columns for C. R. L. & P. GOING WEST, DEPART, and DESTINATION. Lists various train routes and departure times.

Table with columns for CHICAGO, BURLINGTON & QUINCY, DEPART, and DESTINATION. Lists train routes to Chicago and Burlington.

Table with columns for CHICAGO & NORTHWESTERN, DEPART, and DESTINATION. Lists train routes to Chicago.

Table with columns for CHICAGO GREAT WESTERN, DEPART, and DESTINATION. Lists train routes to Chicago.

Table with columns for WABASH RAILWAY, DEPART, and DESTINATION. Lists train routes to St. Louis.

Table with columns for D. M. N. & W. C. RAILWAY, DEPART, and DESTINATION. Lists train routes to Des Moines.

Table with columns for D. M. N. & W. - FOSTER LINE, DEPART, and DESTINATION. Lists train routes to Des Moines.

Table with columns for D. M. N. & W. - BOONE LINE, DEPART, and DESTINATION. Lists train routes to Des Moines.

Table with columns for D. M. N. & W. - BOONE LINE, DEPART, and DESTINATION. Lists train routes to Des Moines.

Table with columns for D. M. N. & W. - BOONE LINE, DEPART, and DESTINATION. Lists train routes to Des Moines.

Table with columns for D. M. N. & W. - BOONE LINE, DEPART, and DESTINATION. Lists train routes to Des Moines.

Table with columns for D. M. N. & W. - BOONE LINE, DEPART, and DESTINATION. Lists train routes to Des Moines.

Table with columns for D. M. N. & W. - BOONE LINE, DEPART, and DESTINATION. Lists train routes to Des Moines.

Table with columns for D. M. N. & W. - BOONE LINE, DEPART, and DESTINATION. Lists train routes to Des Moines.

Table with columns for D. M. N. & W. - BOONE LINE, DEPART, and DESTINATION. Lists train routes to Des Moines.

Table with columns for D. M. N. & W. - BOONE LINE, DEPART, and DESTINATION. Lists train routes to Des Moines.

Table with columns for D. M. N. & W. - BOONE LINE, DEPART, and DESTINATION. Lists train routes to Des Moines.

Table with columns for D. M. N. & W. - BOONE LINE, DEPART, and DESTINATION. Lists train routes to Des Moines.

Table with columns for D. M. N. & W. - BOONE LINE, DEPART, and DESTINATION. Lists train routes to Des Moines.

Table with columns for D. M. N. & W. - BOONE LINE, DEPART, and DESTINATION. Lists train routes to Des Moines.

friends and spent a happy hour recalling incidents concurrent with their earlier life.

James Watson is now employed at the starch works. He says it is a blessing to admire nature as he plods his homeward way and that the busy humdrum of the business portion of the city has no charm for him.

The farewell social given at St. Paul's A. M. E. church Monday evening was largely attended. Revs. Williams and Johnson and Exorcer Raikes and others had charge of the devotional exercises. Rev. Clark was presented with a suit of clothes as a token of the high esteem in which he is held. S. L. Mash, the Democratic "politician," made the presentation speech. The evening was enjoyably spent and refreshments were served to all.

A mass meeting was held at the court house Thursday evening to discuss the position taken by Des Moines newspapers and the general situation in the entire county. The meeting was quite largely attended. Addresses were made by T. E. Barton, D. Levels, I. E. Williamson, S. L. Mash, James A. Ross, A. L. Bell, R. N. Hyde and others. The race history was reviewed, tributes paid to their gallantry and throughout the addresses were both instructive and interesting. The universal expression was given that law and not mob violence should prevail. The following resolutions were adopted:

Resolved, That we do all we can to bring all the guilty persons to justice, and that they be tried, convicted and punished by the proper courts of justice in all cases.

Resolved, That we give no encouragement to unlawful persons of any race, nor to any publications which shall recommend, instigate or hint at lynch law for any citizen of this country.

Resolved, That we especially condemn the utterances by the Mail and Times, Des Moines Daily Leader and the Des Moines Daily News, as unfair and to the prejudice of many good and law-abiding citizens in Des Moines, and also as premature.

Resolved, That we do all we can to bring all the guilty persons to justice, and that they be tried, convicted and punished by the proper courts of justice in all cases.

Resolved, That we give no encouragement to unlawful persons of any race, nor to any publications which shall recommend, instigate or hint at lynch law for any citizen of this country.

Resolved, That we especially condemn the utterances by the Mail and Times, Des Moines Daily Leader and the Des Moines Daily News, as unfair and to the prejudice of many good and law-abiding citizens in Des Moines, and also as premature.

Resolved, That we do all we can to bring all the guilty persons to justice, and that they be tried, convicted and punished by the proper courts of justice in all cases.

Resolved, That we give no encouragement to unlawful persons of any race, nor to any publications which shall recommend, instigate or hint at lynch law for any citizen of this country.

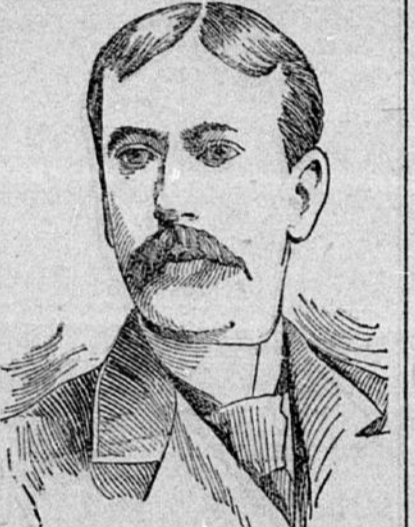
THE WEATHER LIGHT

NEW SIGNAL IN USE AT CHICAGO BUREAU.

The Surrounding Country is Now Warned of Coming Storms by the Use of the Flash-Light Signals - An Innovation.



HE gardeners within a radius of twenty miles of Chicago, when they saw a beam of white light sweep across the sky, some of those chilly nights in the last week of May, knew that it was a warning of frost, and with blankets and straw mats made haste to cover their tender plants, and so saved their early crops. Out on the lake, and in the harbor where vessels deeply laden with grain were ready to go down to the straits, when the pilots saw a streak of red-and-white light shoot across the sky from the direction of the big city, they knew it was not a display of aurora borealis, but a warning of a marine storm with high westerly winds. And if the beam was red, it was quickly interpreted as presaging a storm with high easterly winds. And remembering the big storm of last May, the boats kept the harbor in safety until the storm went by. These lights came from the government signal station, high up on the tower of the Auditorium, from the level top of which the light electric vector can throw a light twenty or thirty miles over the horizon in any direction, says John T. Bramhall in Leslie's Weekly. The use of the search-light for this purpose is entirely new, and is the result of the policy of the Secretary of Agriculture, who has brought the weather bureau to a state of efficiency and usefulness never before attained, and who has been ably seconded in his efforts by Prof. W. L. Moore, who won the post of chief observer of the district of the north by his success in a severe competitive examination, in which problems in weather forecasting formed the chief part. Prof. Moore was trained by Major H. H. C. Dunwoody, the assistant chief of the weather bureau, who is rated by scientific men as the foremost practical meteorologist in the world. Prof. Moore's recent promotion to the position of chief of the weather bureau service is only a just recognition of his high capacity and eminently useful career. The search-light used for the Chicago weather signal is a thirty-inch projector, which was made for the Weather Bureau by the Wooded Island and the Court of Honor, and illumined the heavens for miles around. The apparatus at present use is rated at twenty thousand candle power. The carbon used is an inch in diameter, and the current is taken from the house mains at a potential of one hundred and seventeen volts, and reduced to forty-seven volts by rheostats. The present projector is directed by hand, but the larger one will be operated by a key-board on the tower. The beam of white light from the big apparatus, it is calculated, may be thrown, in clear weather, over a circle having a radius of forty miles or more. The Chicago weather office is the headquarters of the service for the upper lake region, extending from Indiana on the east and Indian Territory on the south, to the international boundary on the north and the great of the Rocky Mountains on the west—a region that floats a commerce as heavy as the Atlantic seaboard, and includes the great cereal-growing states of the country. It is curious to note how far the popular fiction of the actual control of the weather by the official server has grown into a vulgar belief. In times when a change of weather, for hot or cold, wet or dry, is anxiously looked for, it is not uncommon for rough-visaged, gray-whiskered men to invade the sky by the "weather man" and earnestly beg or vehemently demand the desired alteration in meteorological conditions. Others of the class known as "cranks," come to divulge their peculiar "systems" and to plead for an exchange of confidences, that they may be better enabled to deal out rain or shine to the satisfaction of their patrons. Such people are briefly referred to the weather chart and the various indicators, and are obliged, many of them being unable to read even a barometer, to make the best of such means of information.



CHIEF MOORE, WEATHER BUREAU.

These are but a sample of the new goods and new prices.

These are but a sample of the new goods and new prices.

These are but a sample of the new goods and new prices.

These are but a sample of the new goods and new prices.

HARRIS-EMERY CO.

Will introduce their New Wool Fabrics by the greatest line of 39 Cent Goods.

Ever Offered in the City.

8 pieces Navy and Black, 44-inch Serge, Worth 65 Cents. 15 pieces (all colors) fine Henriettes, 40-inch, Worth 50 Cents. 8 pieces Fancy Broadhead Fabrics (all washed and shrunk). The three (3) lines at one round price.

39 Cents. Please remember the hour—between 8 and 10 a. m.

MONDAY MORNING.

Also 25 Pieces. Cheviot Mixtures, New Boucle effects, at 43 Cents.

The two lines at 39 and 43 cents contain serviceable and excellent wearing fabrics that will do hard service for the school room, for either the pupil or the teacher.

Late Novelties Just In. 15 pieces of a Silk-lined Mattalasse, all new shadings, for \$1.00 Yard.

Imported Pattern Novelties, a large assortment, at \$13.50 UP TO \$22.50 A PATTERN.

We have a manufacturing department—where dresses complete, made to measure, can be made for \$12.50 up, for completed costumes. Please investigate.

A royal line of Dress Plaids in a full range of prices, at 39, 45, 65, 75 and 85c.

Just the thing for school dresses.

Black Dress Goods. 40-inch Black Serge, 39c. 40-inch Novelties, all wool, 59c. 40-inch Figured Mohairs, 39c. 40-inch Beautiful Designs, 98c. 54-inch wide Wales, 69c. 54-inch Siellian Cloths, \$1.35.

These are but a sample of the new goods and new prices.

These are but a sample of the new goods and new prices.

These are but a sample of the new goods and new prices.

These are but a sample of the new goods and new prices.

These are but a sample of the new goods and new prices.

These are but a sample of the new goods and new prices.

These are but a sample of the new goods and new prices.

These are but a sample of the new goods and new prices.

These are but a sample of the new goods and new prices.

These are but a sample of the new goods and new prices.

These are but a sample of the new goods and new prices.

These are but a sample of the new goods and new prices.

These are but a sample of the new goods and new prices.

These are but a sample of the new goods and new prices.

These are but a sample of the new goods and new prices.

These are but a sample of the new goods and new prices.

SATISFACTION

ALWAYS AT YOUNKERS

GO TO MAG VICAR, 510 and 512 Locust St., when in want of Wall Paper, Paint, Glass or Signs. HE SELLS AT LOWEST PRICES.

Brackett & Mansby, RETAIL STAPLE AND FANCY GROCERIES, 902 AND 904 CENTER ST.

Rock Island Route Excursions. On the dates named the Great Rock Island Route will run the following excursions: DENVER, COLO., AUG. 11 and 12. Tickets good on all trains. Rate, \$21.25 Round Trip.

DAVENPORT and ROCK ISLAND SUNDAY, AUGUST 18. Special train leaves Des Moines 6 a. m. returning leaves Rock Island 7 p. m. Rate, \$2 Round Trip.

BOSTON, MASS., August 19th to 24th, Inclusive. Tickets good on all Trains. A Special Knight Templar Train leaves Des Moines at 10 a. m. August 22. Rate, \$29.15 Round Trip.

LOUISVILLE, KENTUCKY, Sept 8th to 10th Inclusive. Tickets good on all trains. Special C. A. R. Train will leave Des Moines 9:30 p. m. September 8th. Rate \$13.70 Round Trip.

J. A. STEWART, G. P. & T. A., City Ticket and Passenger Agent, DES MOINES, IOWA.

ORIGINAL NOTICE. In the District Court of Iowa, in and for Polk County, Carrie E. Shaul vs. George W. Shaul. To George W. Shaul: You are hereby notified that there is now on file in the office of the Clerk of the District Court of Polk County, Iowa, the petition of plaintiff in above entitled case, claiming a divorce from you on account of drunkenness on your part. Unless you appear and defend before noon of the second day of the September term, 1895, of said Court, which will convene at Des Moines, Iowa, on the 9th day of September, 1895, default will be entered against you and judgment rendered thereon. August 27, 1895. A. L. STEELE, Attorney for Plaintiff.

TELEPHONE-- FRED SENFLE, Met Market, 806 Center Street, Des Moines. Dealer in all kinds of Fresh, Salt and Dried Meats, Fish, Game and Poultry in season.

T. P. MOURNIN DRUG CO., DRUGS AND MEDICINES, Cigars, Perfumes, Confectionery. Prescriptions a Specialty. 819 - - - WEST WALNUT.

WE WANT 10,000 Prescriptions to fill this year. Bring yours to Sheldon & Cowles, Tenth and Center, who use pure, fresh drugs and chemicals. STAMPS AND CAR TICKETS. M. J. McCULLOUGH, PHARMACIST, DRUGS, TOILET ARTICLES, And everything found in a first-class drug store. Corner Sixth and Grand Avenue.

SHOULD YOU NEED FLOWERS At any time of the year, for any occasion where flowers are used, you can get them, home grown and fresh cut every day, from BLAIR THE FLORIST, 303 Sixth Ave., Des Moines, P. O. Address, Box 283, Telephone 462. Funeral, Party and Wedding Decorations gotten up in latest styles, and at moderate prices. Boxes of Blue Flowers for presentation and personal wear.

EDWARD P. JOHNSON, PHYSICIAN AND SURGEON, Des Moines, Iowa. Hours: 9:30 to 11 a. m., 1:30 to 3:30 p. m., 7:30 to 8:30 p. m.; Sun. 10:30 to 11 a. m. Office, Corner Sixth and Locust Sts. Residence, 733 Ninth St.

West End Store

621 WALNUT ST. 621 WALNUT ST.

MOERSHELL BROS.

Owing to the enormous success attending our Last Saturday Night's Sale, we shall close the remaining pieces of

SILK FACED VELVETS THREE YARDS FOR 10c.

LARGE TURKISH TOWELS, - 10c LINEN DAMASK TOWELS, - 5c Saturday Evening, 7:30 to 9:30 O'Clock.

Moershell Bros. Are You A Subscriber of The Bystander?

HUGH McBRIDE. GUY McBRIDE.

McBRIDE BROS. DRUGGISTS

Prescriptions a Specialty. SIXTH AVE. & LOCUST ST., DES MOINES, IA.

SHANK BROS., FUNERAL DIRECTORS.

515 EAST SIXTH ST., Des Moines, Iowa. Telephone Nos. 686 and 689.

AMERICAN SAVINGS BANK, DES MOINES, IOWA.

Cor. East Fifth and Locust Sts. CAPITAL \$75,000. E. S. Harter, President. F. E. Elliott, Vice-Presidents. N. W. Smith, Cashier. Wm. L. Shepard, Assistant Cashier. DIRECTORS: J. N. Hohberger, H. H. Swope, J. W. Randolph, G. D. Elyson, Wm. L. Shepard, E. S. Harter, N. W. Smith, F. E. Elliott, J. S. Brown.

Wabash - Line. This Route will Save You Loss of time and loss of money.

The worry and annoyance of transfer between depots in a strange city; The unpleasantness of missing connections at junction stations; The necessity of exposure to the elements; in short, "The Banner Route" Is the only route by which the public can enjoy all the comforts of travel on solid trains, made up of first-class equipment, between Des Moines, Kansas City, St. Louis, And the South, Southwest, And Southeast, CHICAGO, DETROIT AND THE EAST.

HEREFORD BULLS!

Will exchange for Corn or Good Notes. GEO. S. REDHEAD, 319 Fourth St., Des Moines, Ia.

Ramsey Barber Supply Co., General Barbers' Supplies.

Grinding and Conceiving Under Our Own Supervision. Satisfaction assured. 15 Fifth St., Des Moines, Ia.

FIVE FACTS ABOUT THE GREAT ROCK ISLAND ROUTE.

First.—The Chicago, Rock Island & Pacific Ry. runs through Vestibuled Trains daily Chicago to Denver, Colorado Springs and Pueblo, leaving Chicago via Kansas City daily at 6:00 p. m., and via Omaha at 10:00 p. m., arriving in mountain cities second morning.

Second.—The regular Tourist Car to California via Kansas City runs once a week, and leaves Chicago every Thursday at 6:00 p. m., Kansas City 10:50 a. m., every Friday. Tickets based on second-class rate, and car runs on fastest trains, and known as the Phillips Rock Island Tourist Excursions. Car arrives at Colorado Springs Saturday, 7:35 a. m., and Los Angeles Tuesday.

Third.—Many persons are buying farm lands in Texas, Kansas and Oklahoma. THE GREAT ROCK ISLAND ROUTE runs to all this territory.

Fourth.—For Mexico City the Rock Island runs a Through Sleeper from Kansas City daily at 8:40 p. m., via Topeka, McFarland, Wichita and Fort Worth and Austin to San Antonio. Two routes from there are—International E. R. to Laredo, and Mexican National to the City of Mexico; Southern Pacific and Mexican International via Spofford and Eagle Pass to City of Mexico.

Connections are also made at Fort Worth via the Texas Pacific to El Paso, and over the Mexican Central to City of Mexico.

Fifth.—Send to address below for a Souvenir called "Summer Vacations," that gives much information to tourists. Sent free. JOHN SEBASTIAN, G. P. A., CHICAGO.

Boys' tan \$2.00 shoes—just a few left at \$1.00. The Hub, 607 Walnut Street.

Williamson & Foster, ATTORNEYS AT LAW.

Special attention given to collections. Room over 211 West Fourth Street, Hawkeye Insurance Building.

J. O. FREBERG, TAILOR.

Rooms 1, 2 and 3, Over 608 Walnut St. DES MOINES, IOWA. ICE CREAM. HARDING SUPPLY CO., A. W. HARDING, Manager. Sweet Cream, Sweet Milk, Butter Milk, Staple Groceries, Fruit. Ice cream orders for parties and families a specialty. Telephone 617. 169 W. 9th St., Des Moines, Ia.

T. F. C. MORGAN, MERCHANT TAILOR.

Latest styles of samples on hand. Cleaning and repairing ready done. 256 W. Third Street, Des Moines, Iowa.

G. S. LITTLER, THE CASH CROCK.

Corner Ninth and Grand Ave. ALL GOOD COOKS Say that the Alta Steel Ranges are the best. MANUFACTURED BY L. G. COMPARET, HARDWARE DEALER. 314 WALNUT STREET. THE OLD PIONEER HARNESS SHOP. Established in 1856 by Father Dippert. WM. E. DIPPERT, SUCCESSOR. 314 Seventh Street.