



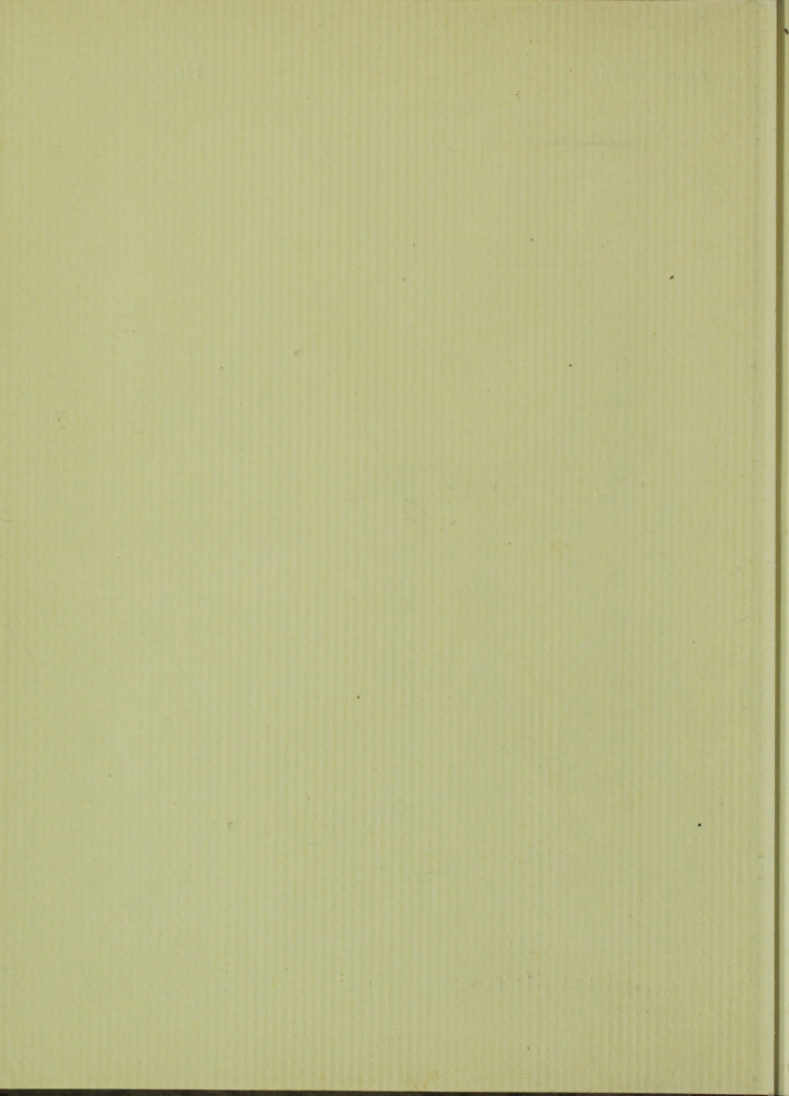
Pictures taken by

I.B. Davidson

1935 - while attending
international conference
on engineering

Anmerkungen:

Nr. III





HOG BARN
Danish Type
Oxford Uni. Farm

ID-197



HOG BARN
Interior of above
Oxford Uni. Farm

D148



GRAIN DRYING PLANT
Oxford University Farm
Oxford, England

D 149



GRAIN DRYER
Pan type, Warburton Farm
Oxford, Eng.

D 150



HOSIER SYSTEM POULTRY MANAGEMENT
 J.E Newman
 Cotswold Country

D 151



SAME AS ABOVE
 Farm owned by Alan Anderson
 Director Bank of England

D 165



HOSIER SYSTEM APPLIED TO HOGS.
 Farm managed by Webster Cory
 Notgrove Village Gloucestershire D152



HOSIER SYSTEM
 Showing method of moving
 Not CARRIAGE on pneumatic tires D153



HOSIER SYSTEM
66 Pairs, 25 Birds in each pen
Handled by one man D/54



CHARIOT
For hauling feed and eggs



HOSIER SYSTEM OF DAIRY
COW MANAGEMENT
Webster Corp., Mgr

D/56



MILKING PLANT
Milking machine operated with
paraffine

D/57



MILKING STALLS
 60 cows - Handled 1 man and 1
 boy - Moved once a week D158



TYPICAL ENGLISH VILLAGE
 Newer type
 Burford, Oxfordshire D159



CABLE PLOW
England

MC109



FOWLER GYROTILLER
England

MC103



ENGLISH THRESHING SCENE

England

Near Kings Lynn

McC

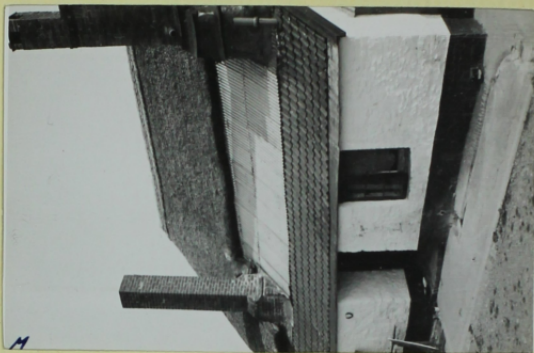
Mc96



HAY STACKER

England

McC93



THREE TYPES ROOF
One building
ENG

Mc C 23



SWISS FARM HOME
Switzerland

Mc C 290



CHALET DE NECESSAIRE
French type

MCC 323



VINYARDS NEAR TEARGONA
On terraces

MCC 332



MONUMENT IN GENEVA
Switzerland

McC 318



RHONE VALLEY GLACIER

McC 307



M.C.
MOUNT PILATUS
Lucerne
Switzerland

McC €3/5



CHALET DE NECESSAIRE
Swiss type

McC not found in book



WOMEN WASHING
On road to Madrid
Spain

MC346



LIFTING WATER FOR IRRIGATION
Near Valencia
Spain

MC337



ROMAN PLOW
On road to Madrid
Spain

McC340



PLOWMAN
Above

McC341



M.C.

DONKEY BASKET AND RIDER
On road to Madrid
Spain

M.C. 339



SPANISH CART
A la Tander
Spain

M.C. 348



SPANISH CART
Horse and donkey
Spain

McC 347



BEGGARS
On road to Madrid
Spain

McC 342



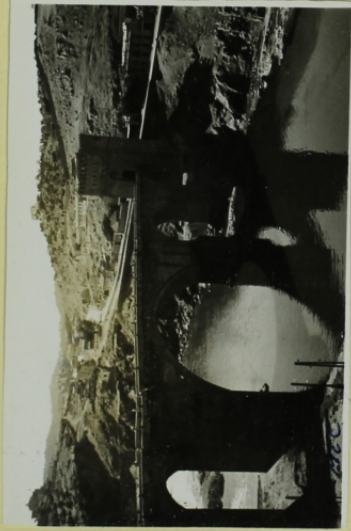
POST OFFICE BUILDING
 typical of public building
 Madrid

D.168



Puente de San Martín
 Bridge of Toledo
 Spain

D.173



BRIDGE AT TOLEDO
Spain

Mo. 1952



AT MUSEUM OF GREGO!
L-R. M. Soguer, E. Amado Heredia, E. Gress
English speaking - Denham

D 1720



SAME AS D 170

D171



SAME AS D-170

McC358



IN TOLDO
Lemon Squash
Spain

D172



SAME AS D172

MC953



ON PASEO DE RECOLETOS
Spanish Langor + Lemon Squash
Madrid

D 174



LEMON SQUASH
Madrid

M.C. 355



AFTER A SWEEP OF A MACHINE GUN
Madrid
Spain

D 169

Neg. 180

SPANISH NURSES AND THEIR CARES
Madrid
Spain

D 180



CHALET DE NECESSITÉ
 Paseo de Recolectos
 Madrid Spain

D 166



CHALET DE NECESSITÉ
 Spanish type
 Madrid

D 167



194

D180

Applying for visitor
Madrid

D181

Pos.
Mae

CHALET, L'ENFERMEUSE
Spanish type
Madrid

D167



SPANISH BULL FIGHT

First appearance
Madrid Spain

D 184



BULL FIGHT

Applying the irritator
Madrid

D 185



BULL FIGHT
Warding the bull off
Madrid

D 182



BULL FIGHT - TOREADOR
Getting ready for the final thrust
Madrid

D 183



BULL FIGHT
The bull goes down
Madrid

D185



BULL FIGHT
The gives forehead? ears and tail
Madrid

D186



BULL FIGHT
 Dragging the bull from the ring D187



THE MUNDENS AND GUESTS
 Madrid
 Spain

D175



FUENTELARREYNA
 Restaurant near Madrid
 Spain

McC 356



Grossi, Regolini

near Madrid
 Spain

575

McC 357



BULL FIGHT
 Dragging the bull from the ring D187



THE MONUMENTAL
 Madrid
 Spain

D175



FUENTE LAREYNA
Restaurant near Madrid
Spain

Mc 356



THE MUSICIANS AND THEIR GUESTS
Near Madrid
Spain

Mc 357



RANCH - near Brunello
S.R. Bedriñana
Near Madrid

D 176



OXEN PLOWING
Bedriñana Ranch
1600 H

MC 372



MULES AND PLOW
Mr Mondan and Proprietor
Spain

D 128



ROMAN PLOW
Bedriñana Ranch
Spain

D 129



MULETEER
Near Madrid
Spain

McC375



NOON HOUR
MULES, OXEN AND MEN
Spain

McC373



177

STOCKS FOR SHOEING OXEN

Bedriñanq Ranch

Spain

D-177



TOWER

Unit of old signal system

Spain

D-188



SIGNAL TOWER
Same as D188
Spain

D189



SIGNAL TOWER
Same as D188
Spain

D190



SPANISH VILLAGE
North of Madrid
Spain

D191



TYPICAL SPANISH TOWN
on road to Madrid
Spain

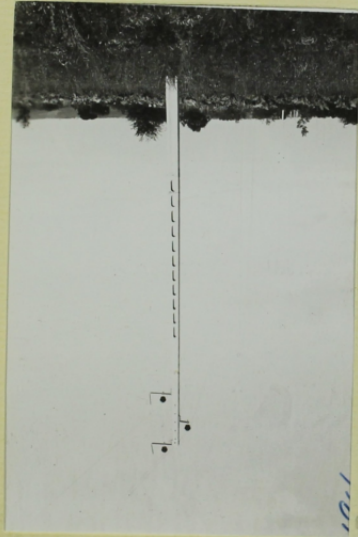
McC 344



CORN GROWING NORTHERN SPAIN
All leaves and top removed
Spain D192



FRENCH GENERAL PURPOSE CART
Used for hauling milk etc. as well
as passengers D193



101

CONCRETE TRANSMISSION LINE POLD
Used generally throughout France
France

D 194



102

FRENCH WINDMILL
Double wheel
South west Paris

D 195



ON THE ROAD TO PARIS
 Prof. & Mrs McCuen and Ford
 FRANCE
 Nog to McC D196



AT CHATEAU HAUT-BRION
 Mr Weller Prop

McC 381



MODERN STYLE HOUSE
Near TOURS
FRANCE

D197



FRENCH FARMSTEAD
TYPICAL OF COUNTRY SW. FRANCE
FRANCE

D198



TYPICAL FRENCH FARMSTEAD
Southwest of Paris
France

D199



BOUCHERIE CHEVALINE
Horse heads indicate kind of meat sold
Near Paris

T0200



17596

17596.51

100182



TY
South
France



B

Hors
Near Paris

70200



Chopin Alley Run
Near Berlin

Mo C 56



Black Forest Road

Mo C 182





Robert B. Smith and



Friend White

Numbers Reduced By Nazi Education Minister

The number of students who are to be allowed to attend German universities has been greatly restricted, and the quotas fixed by the Reich Minister of Education are:—

Berlin University 6,900; Frankfort 1,700; Cologne 2,600; Leipzig 3,300; Hamburg 2,100; Munich 5,400, and Munster 2,900.

The effect of this restriction is that students who do not belong to the Nazi party or who have not served in the army will not have much chance of admission to universities, says the

"QUOTA" OF STUDENTS

Numbers Reduced By Nazi Education Minister

The number of students who are to be allowed to attend German universities has been greatly restricted, and the quotas fixed by the Reich Minister of Education are:—

Berlin University 6,900; Frankfort 1,700; Cologne 2,600; Leipzig 3,300; Hamburg 2,100; Munich 5,400, and Munster 2,900.

The effect of this restriction is that students who do not belong to the Nazi party or who have not served in the army will not have much chance of admission to universities, says the Exchange.

D201

M 389



10201

