

Eurasian Collared-Dove

20 Aug 1998

Willow Creek Park, Osceola Co., IA

Babs and Loren Padelford, Ed Thelen

P-0605, IBL 69:35

Record Number: 98-30

Classification: A-P

DOCUMENTATIONS

Babs and Loren Padelford (20 Aug), 1405 Little John Rd.,
Bellevue, NE 68005 [2/28/99]

Ed Thelen, 15362 250th Ave., Spirit Lake 51360 [2/28/99]

PHOTOGRAPHS

Ed Thelen, P-0605

REFERENCES

Field Reports: IBL 69:35

Records Committee: IBL 69:89

Padelford, L., and B. Padelford. 1999. Eurasian Collared-Dove
in Osceola County. Iowa Bird Life 69:103.

VOTE: 5 A-P, 2 A-D

A-P, Photo does not show nor does description outline the
2-toned undertail, and squared tail cannot be seen in the photo.
The narrow white line can be seen above the dark nape line with
magnifier. Photo bird does appear darker overall than a Ringed
Turtle Dove. Was this bird seen after August. Minnesota's second
record for this species appeared at Lynd in Lyon County, about
2-3 counties north of Osceola County.

A-P, My confidence level on this bird is still directly
related to call.

A-P, The black basal outer webs of the outer rectrices
indicate Collared-Dove, the outer webs would be white in Ringed
Turtle-Dove. The call description is consistent with
Collared-Dove, as are the dark primaries.

A-D, The descriptions and probably the photos do not provide
key field marks to eliminate Ringed Turtle-Dove, but the song
does.



<No. 19>

11+00 11BNN-26F

Eurasian Collared-Dove P-0605
Willow Creek P., Osceola Co.
1 Sep 1998 Ed Thelen 4 Y-30

<No. 18>

11+00 11BNN-34AU

Eurasian Collared-Dove P-0605
Willow Creek P., Osceola Co.
1 Sep 1998 Ed Thelen 4 Y-30

LITERATURE CITED

- Blackshaw, S. R. 1988. Identifying the Eurasian Collared-Dove. *Birding* 20:311-312.
Padelford, L., and B. Padelford. 1999. Eurasian Collared-Dove in Osceola County. *Iowa Bird Life* 69:103.
Proescholdt, M., and M. Stegmann. 1999. Eurasian Collared-Dove specimen for Iowa *Iowa Bird Life* 68:102.
Ramsey, S. 1988. Letter to the Editor: More on Eurasian Collared-Doves. *Birding* 20:343-344.
White, T. 1986. Collared-Dove: The next North American species? *Birding* 18:150-152.

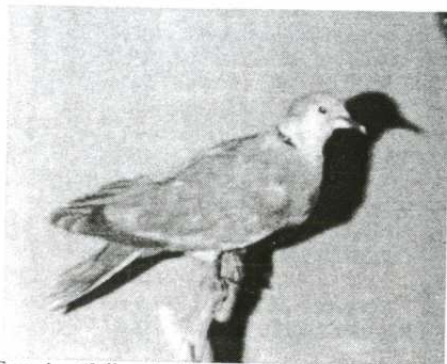
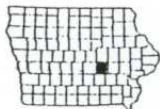
6 Longview Knoll NE, Iowa City, IA, 52240 (ioufuller@aol.com)

EURASIAN COLLARED-DOVE SPECIMEN FOR IOWA

MARK PROESCHOLDT AND MIKE STEGMANN

On 15 October 1997, the Central Iowa Ornithologists' of the Marshalltown region travelled to Grinnell on one of their regular field trips. There, they visited 16th Street in north Grinnell to see if the Eurasian Collared-Doves which had first appeared in August 1997 (see note by Fuller, this issue), were still present. Along the road they noticed a dead Eurasian Collared-Dove which was retrieved by Ed Savage and brought back to Marshalltown. There it was turned over to Mike Stegmann of the Marshall County Conservation Board. Mike prepared the bird as a display mount (see photo) which is now on display at the conservation board's headquarters in Marshalltown. The bird, a male with molt evident on the head and tail, seemed to be in good condition and clearly was killed in a collision with a car. There are several photographs of the birds at Grinnell and Osceola County, this is the first specimen of this species for Iowa.

Box 65, Liscomb, IA 50148 and 1929 Vine Street, Marshalltown, IA 50158



Eurasian Collared-Dove specimen at Marshalltown
Photo by Mark Proescholdt.

98-30

EURASIAN COLLARED-DOVE IN OSCEOLA COUNTY

LOREN AND BABS PADELFORD

We were on our way to do some birding in northwestern Iowa on 20 August 1998. It was near lunch time so we stopped in Willow Creek Park, on Highway 9 about six miles east of Highway 60, to have our lunch. When we got out of the car we heard a dove calling - a series of "hoos" - "hoo-hoo-hoo" without any of the bubbling notes associated with the call of the Ringed Turtle-Dove. As it continued to call we went to look for it. It flew to the top of a large dead tree where we studied it for several minutes through our binoculars at a distance of about 30 yards. It was a dove, larger than a Mourning Dove with a pale brown back and a light gray breast. It had a narrow black crescent on the nape of the neck. It had a Mourning Dove-like small head and small bill. In flight the tail appeared rather square at the tip. The tip of the tail was white. This combination of characteristics identified it as a Eurasian Collared-Dove, a species first reported in Iowa in 1997 (Fuller, *Iowa Bird Life* 69: , 1999).

During the time we were in the park, from about 1130-1230 hours, we heard the bird call many times.

1405 Little John Rd., Bellevue, NE 68005 (lpdlfrd@juno.com)



WHITE-FACED IBIS AT HARRIER MARSH IN BOONE COUNTY

ED THELEN

On 15 August 1997, while driving back to Spirit Lake from Des Moines, I decided to stop and check out Saylorville reservoir for some fall migrant shorebirds. While at Saylorville I met Eugene and Eloise Armstrong who were also out birding. After we introduced ourselves and checked out some nearby shorebirds, it was soon time for me to continue my drive home. Knowing that I was headed north, Eugene suggested I stop at Harrier Marsh, a wetland complex just south of Ogden in Boone County. He said it had some good mudflats and should hold a few shorebirds. He also requested I call him if I happen to see an ibis this fall while birding the sloughs of northwestern Iowa. I told him I had never seen one before but nevertheless would call him if I happened to see one.

As I headed home I thought about what Eugene had said about Harrier Marsh and decided to check it out. Imagine my surprise when I saw an ibis less than 100 yards from the east-west gravel road adjacent to Harrier Marsh. Standing before me was a dark, long-legged bird with a thick, decurved, gray-colored bill that appeared as long as the bird's neck. It was feeding actively next to some Mallards which seemed a third the size of the ibis. The body, back, wings, and rump were mostly iridescent green-black with a tinge of purple sheen. Its neck, throat, nape, and forehead were brown with slight streaks of white. Its legs appeared dark with no hint of color. Its facial skin was dark with no white or light coloring. With a 30-power spotting scope, I could clearly see the red eyes of the ibis on several occasions. Because of the red eyes I identified this ibis as an adult White-faced Ibis in basic plumage. According to Kaufman (*Advanced Birding*, 1990) "If you can see the red eyes the bird is a White-faced Ibis".



98-30

Babs & Loren Padelford
1405 Little John Rd.
Bellevue, NE 68005

Documentation of Eurasian Collared-Dove

Date: August 20, 1989

Location: Willow Creek Park, Osceola County

Time: 1130 - 1230 hrs.

Description of bird: A dove larger than Mourning Dove. It had a pale brown back with a light gray breast. It had a narrow black crest on the nape of the neck. It had a mourning dove-like small head and small bill. In flight, the tail appeared rather square on the tip; tip was white.

Voice: When we first got out of the car we heard it calling. It was a series of "hoo's" - "hoo - hoo - hoo" without any bubbling notes associated with the song of the Ringed Turtle-Dove. We heard the bird calling several times while we were in the park.

The bird was seen flying to a dead tree where it remained for several minutes.

Distance from bird: 30 yards

Optical equipment: Bausch & Lomb 10 x42 Elite binoculars;
Docter 8 x 30 binoculars

Babs Padelford

Babs & Loren Padelford

Loren Padelford

98-30

Babs & Loren Padelford
1405 Little John Rd.
Bellevue, NE 68005

Documentation of Eurasian Collared-Dove

Date: August 20, 1989

Location: Willow Creek Park, Osceola County

Time: 1130 - 1230 hrs.

Description of bird: A dove larger than Mourning Dove. It had a pale brown back with a light gray breast. It had a narrow black crest on the nape of the neck. It had a mourning dove-like small head and small bill. In flight, the tail appeared rather square on the tip; tip was white.

Voice: When we first got out of the car we heard it calling. It was a series of "hoo's" - "hoo - hoo - hoo" without any bubbling notes associated with the song of the Ringed Turtle-Dove. We heard the bird calling several times while we were in the park.

The bird was seen flying to a dead tree where it remained for several minutes.

Distance from bird: 30 yards

Optical equipment: Bausch & Lomb 10 x42 Elite binoculars;
Docter 8 x 30 binoculars

Babs Padelford

Babs & Loren Padelford

Loren Padelford

8 Apr. 99

Tom,

We noticed errors in our documentation of the EC Dove. For the record, we have corrected the errors and enclosed a copy.

Sorry for the inconvenience.

Loren Padelford

What species? Eurasian Collared Dove How many? 1Location? Willow Creek Recreation Area - Oscoda CountyType of habitat? old Farm Grove next to pond - open grassland ground
ITWhen? date(s): Sept 1, 1998 time: 6:00 to 6:30 pmWho? your name and address: Ed Thelen 15362 250th Ave Spirit
LAKE,
IA,
57360others with you: my wife LINDA and son & daughterothers before or after you: it was reported on the birdline

Describe the bird(s) including only what you observed. Include size, shape, details of all parts (bill, eye, head, neck, back, wing, tail, throat, breast, belly, under tail, legs, feet). Also mention voice and behavior.

Somewhat larger than mourning dove especially in flight. Tail larger than mourning doves.

IT resembled a mourning dove except for a black collar on the back of its neck. Its tail was larger (I could not see any white on the ends when it flew). Its voice a cwhe-cwhe-cwhe resembled an owl more than a dove. According to "Master Guide to Birding" the voice of a Ringed-turtle dove is a vibrating sound. This bird did not have a vibrating call.

Similar species and how eliminated: Mourning Dove - doesn't have black collar on nape
Ringed Turtle Dove - Heard it, cpoing. Voice eliminated Ringed Dove

Did any one disagree or have reservations about identification? Yes - To me it

If yes, explain:

looked similar to a ringed turtle dove

Viewing conditions: give lighting, distance (how measured), and optical equipment:

Good - See PhotosPrevious experience with species and similar ones: NoneReferences and persons consulted before writing description: Master Guide to Birding
Stokes Eastern Guide to BirdsHow long before field notes made? _____ this form completed? 1 monthMAIL TO: T. H. Kent, Field Reports Editor, 211 Richards Street, Iowa City IA 52240