

Eurasian Collared-Dove
15 Oct 1997
Grinnell, Poweshiek Co., IA
*Mark Proescholdt, specimen
P-0577, IBL 68:86

Record Number: 97-62
Classification: A-S

LETTER AND NOTES

Mark [Proescholdt] to Tom [Kent], 26 Feb 1998 [*6/9/98]

PHOTOGRAPHS

Mark Proescholdt, P-0577

REFERENCES

Records Committee: IBL 68:86

Proescholdt, M., and M. Stegman. 1999. Eurasian Collared-Dove specimen for Iowa. Iowa Bird Life 69:102.

VOTE: 7 A-S

A-S, Specimen verified and photographed.

A-S, Specimen photographed.

A-S, Did Mark view the specimen at the direction of the committee or has anyone viewed it? We need to talk about criteria for accepting specimens.

A-S, Photo shows chunky shape of this species.

LITERATURE CITED

- Blackshaw, S. R. 1988. Identifying the Eurasian Collared-Dove. *Birding* 20:311-312.
- Padelford, L., and B. Padelford. 1999. Eurasian Collared-Dove in Osceola County. *Iowa Bird Life* 69:103.
- Proescholdt, M., and M. Stegmann. 1999. Eurasian Collared-Dove specimen for Iowa *Iowa Bird Life* 68:102.
- Ramsey, S. 1988. Letter to the Editor: More on Eurasian Collared-Doves. *Birding* 20:343-344.
- White, T. 1986. Collared-Dove: The next North American species? *Birding* 18:150-152.

6 Longview Knoll NE, Iowa City, IA, 52240 (ioufuller@aol.com)

EURASIAN COLLARED-DOVE SPECIMEN FOR IOWA

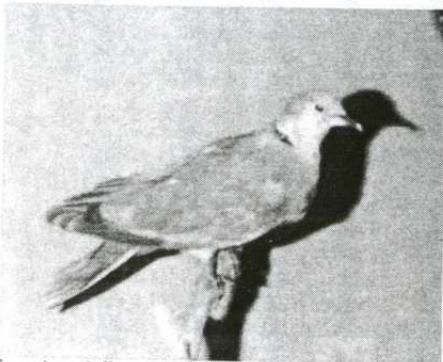
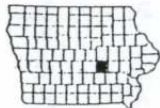
MARK PROESCHOLDT AND MIKE STEGMANN

On 15 October 1997, the Central Iowa Ornithologists' of the Marshalltown region travelled to Grinnell on one of their regular field trips. There, they visited 16th Street in north Grinnell to see if the Eurasian Collared-Doves which had first appeared in August 1997 (see note by Fuller, this issue), were

still present. Along the road they noticed a dead Eurasian Collared-Dove which was retrieved by Ed Savage and brought back to Marshalltown. There it was turned over to Mike Stegmann of the Marshall County Conservation Board. Mike prepared the bird as a display mount (see photo) which is now on display at the conservation board's headquarters in Marshalltown. The bird, a male with molt evident on the head and tail, seemed to be in good condition and clearly was killed in a collision with a car.

There are several photographs of the birds at Grinnell and Osceola County, this is the first specimen of this species for Iowa.

Bq 65, Liscomb, IA 50148 and 1929 Vine Street, Marshalltown, IA 50158



Eurasian Collared-Dove specimen at Marshalltown
Photo by Mark Proescholdt.

97-62

EURASIAN COLLARED-DOVE IN OSCEOLA COUNTY

LOREN AND BABS PADELDFORD

We were on our way to do some birding in northwestern Iowa on 20 August 1998. It was near lunch time so we stopped in Willow Creek Park, on Highway 9 about six miles east of Highway 60, to have our lunch. When we got out of the car we heard a dove calling - a series of "hoos" - "hoo-hoo-hoo" without any of the bubbling notes associated with the call of the Ringed Turtle-Dove. As it continued to call we went to look for it. It flew to the top of a large dead tree where we studied it for several minutes through our binoculars at a distance of about 30 yards. It was a dove, larger than a Mourning Dove with a pale brown back and a light gray breast. It had a narrow black crescent on the nape of the neck. It had a Mourning Dove-like small head and small bill. In flight the tail appeared rather square at the tip. The tip of the tail was white. This combination of characteristics identified it as a Eurasian Collared-Dove, a species first reported in Iowa in 1997 (Fuller, *Iowa Bird Life* 69: , 1999).

During the time we were in the park, from about 1130-1230 hours, we heard the bird call many times.

1405 Little John Rd., Bellevue, NE 68005 (lpdlfrd@juno.com)



WHITE-FACED IBIS AT HARRIER MARSH IN BOONE COUNTY

ED THELEN

On 15 August 1997, while driving back to Spirit Lake from Des Moines, I decided to stop and check out Saylorville reservoir for some fall migrant shorebirds. While at Saylorville I met Eugene and Eloise Armstrong who were also out birding. After we introduced ourselves and checked out some nearby shorebirds, it was soon time for me to continue my drive home. Knowing that I was headed north, Eugene suggested I stop at Harrier Marsh, a wetland complex just south of Ogden in Boone County. He said it had some good mudflats and should hold a few shorebirds. He also requested I call him if I happen to see an ibis this fall while birding the sloughs of northwestern Iowa. I told him I had never seen one before but nevertheless would call him if I happened to see one.

As I headed home I thought about what Eugene had said about Harrier Marsh and decided to check it out. Imagine my surprise when I saw an ibis less than 100 yards from the east-west gravel road adjacent to Harrier Marsh. Standing before me was a dark, long-legged bird with a thick, decurved, gray-colored bill that appeared as long as the bird's neck. It was feeding actively next to some Mallards which seemed a third the size of the ibis. The body, back, wings, and rump were mostly iridescent green-black with a tinge of purple sheen. Its neck, throat, nape, and forehead were brown with slight streaks of white. Its legs appeared dark with no hint of color. Its facial skin was dark with no white or light coloring. With a 30-power spotting scope, I could clearly see the red eyes of the ibis on several occasions. Because of the red eyes I identified this ibis as an adult White-faced Ibis in basic plumage. According to Kaufman (*Advanced Birding*, 1990) "If you can see the red eyes the bird is a White-faced Ibis".



Feb. 26, 1998

Hi, Tom!

Here is the bunch of pictures of the Eurasian Collared Dove specimen. And it certainly is an Eurasian Collared Dove.

I saw three live ones today at Grinnell at the golf course on the overhead wires. That was my first sighting of them since November.

Garry Brandenburg, whose hand and arm ~~are~~ in some of the pictures, has other pictures that he's taken. He said to let him know if he can help you in any way.

There was no label on the Eur. Collared Dove, but a log recorded the date, collector, location, and circumstances. This is for the state and federal permits.

See Garry's card on other side.

Thanks for all your good Records Committee work, Tom! Have a



**MARSHALL COUNTY
CONSERVATION BOARD**

1302 East Olive
Marshalltown, Iowa 50158

Garry L. Brandenburg
Director
(515) 754-6303



great Spring! The Redwings,
Robins, Killdeer, Bluebirds, and
Meadowlarks are back!

take care!

mark

Eurasian Collared Dove 97-62

Collected → October 15, 1997

Location → Grinnell, Iowa

Collector → Ed Savage of
Marshalltown, Iowa

Found dead along road near
the Grinnell golf course area
where they had been seen.

612 ± grams

Mounted by Mike Stegmann

Assistant Naturalist - Marshall Co. Conservation
Board

Current location of specimen —

Marshall County Conservation Board
Headquarters

Marshalltown, Iowa

97-62 Feb. 26, 1998

Hi, Tom!

Here is the bunch of pictures of the Eurasian Collared Dove specimen. And it certainly is an Eurasian Collared Dove.

I saw three live ones today at Grinnell at the golf course on the overhead wires. That was my first sighting of them since November.

Garry Brandenburg, whose hand and arm are in some of the pictures, has other pictures that he's taken. He said to let him know if he can help you in any way.

There was no label on the Eur. Collared Dove, but a log recorded the date, collector, location, and circumstances. This is for the state and federal permits.

See Garry's card on other side.

Thanks for all your good Records Committee work, Tom! Have a



**MARSHALL COUNTY
CONSERVATION BOARD**

1302 East Olive
Marshalltown, Iowa 50158

Garry L. Brandenburg
Director
(515) 754-6303



great Spring! The Redwings,
Robins, Killdeer, Bluebirds, and
Meadowlarks are back!

take care!

mark

There was no label on the Fur colored
Dove, but a log recorded the date, collector,
location, and circumstances. This is for the
state and federal permits.

See Garry's card on other side.
Thanks for all your good records
Committee work, Tom! Have a