

BULBS^{AND} PLANTS

FOR HOME ADORNMENT



SUPPLEMENTARY
- BARGAINS -

Of new and
choice bulbs
and delightful
plants.

WINDOW BOX HYACINTH COLLECTION

IOWA SEED COMPANY

DES MOINES, IOWA

"WINDOW BOX" HYACINTH COLLECTION

TWELVE CHOICE BULBS, ALL DIFFERENT, AT A LOW PRICE, QUALITY CONSIDERED

For this collection we buy a special grade of hyacinths, paying a premium to secure first class stock. They are sound and solid and will produce fine, large flowers. We include in this collection both double and single sorts so that you may have both types and in dozen bulbs you will have a dozen different colors, no two being alike. From our experience with hyacinths we offer you this as a special bargain and believe you cannot do better for the small sum asked for this collection: 1 Single White, 1 Single Pink, 1 Single Red, 1 Single light Blue, 1 Single Dark Blue, 1 Single Yellow, 1 Double White, 1 Double Pink, 1 Double Red, 1 Double Light Blue, 1 Double Dark Blue, 1 Double Yellow—

TWELVE BULBS, ALL DIFFERENT—OUR BEST GRADE OF UNNAMED HYACINTHS—A WIDE RANGE OF COLOR AND BEAUTY.

Postpaid for Only \$1.25 Anywhere in the United States



National Banner Collection Christmas Day Collection

"RED, WHITE AND BLUE."

A fine collection for those who want a few hyacinths only. The Romans will bloom early and the Dutch sorts later so that a succession may be had from Christmas time until in March. By purchasing two or three of these collections you can have several plants in bloom most of the winter. One Dutch Hyacinth, red; 1 Dutch Hyacinth, white; 1 Dutch Hyacinth, blue; 1 Roman Hyacinth, red; 1 Roman Hyacinth, white, 1 Roman Hyacinth, blue—6 fine bulbs, postpaid, 60 cents. Four collections (24 bulbs) for \$2.00, postpaid.

The bulbs in this offer are for early planting in September and will furnish fine, fragrant flowers, and handsome table decorations during December and the holiday period. Planted in October or later they will come into bloom during the winter when flowers are wanted. Consists of 6 Paper White Grandiflora Narcissus, 2 Chinese Sacred Lilies, 6 Roman Hyacinths (four different colors), 12 choice Freezia and 26 bulbs in all for only \$2.00 postpaid. Two full collections sent by express, customer paying charges, for only 3.50.

HOUSEHOLD COLLECTION—One National Banner and one Christmas Collection, both sent postpaid for \$2.50.

Fifty-Six Years Successful Business

IOWA SEED CO.

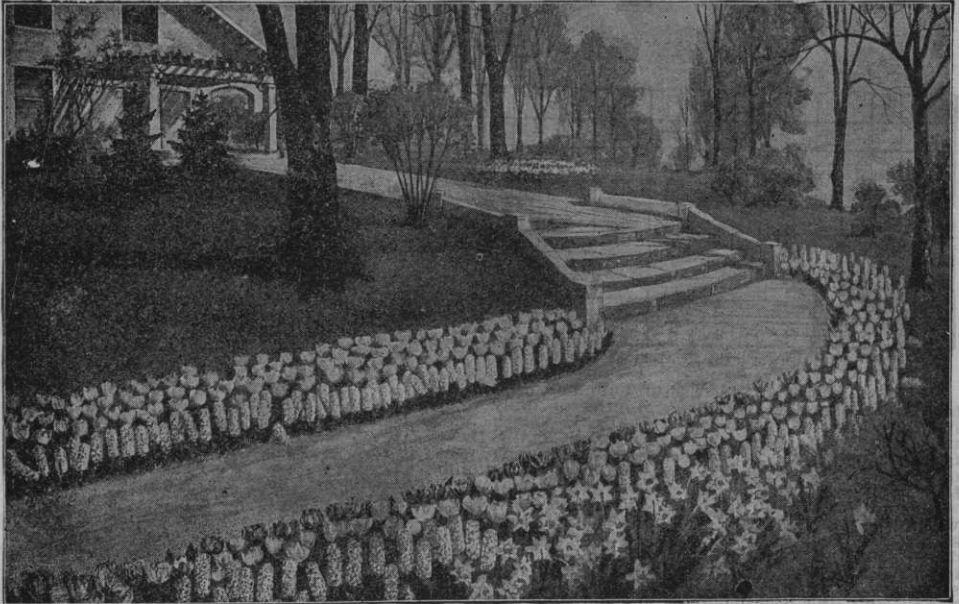
**"SEEDSMEN
TO THE
AMERICAN PEOPLE"**

Des Moines, Iowa, August 1921

CUSTOMERS PLEASE NOTE PRICES CAREFULLY—

At the time this catalogue is printed (July, 1921) there is before congress a measure to increase very materially (100 to 300 per cent) the duty on Dutch bulbs. We have been compelled to make prices to conform to the proposed law. Should we be able to import our bulbs at the old time duty we will give our customers the benefit by adding extra bulbs to their orders. Remember we pay the postage at the prices quoted in this book, on all items unless otherwise stated. If you want a copy of our complete catalogue for the year 1921 a copy will be mailed free on request.

SPECIAL AUTUMN OFFERS OF HARDY BULBS, PLANTS, SHRUBS AND WINDOW GARDEN SUPPLIES FOR HOME ADORNMENT.



ABOUT WARRANTING.—Nothing is sent out which we do not believe to be good in every respect, but we want it plainly understood that while we exercise great care to have all seeds, bulbs and plants pure and reliable, and also true to name, we do not give any warranty, express or implied. If purchaser does not accept goods on these terms and conditions, they are to be returned at once, and the money that has been paid for same will be refunded. No officer, agent or employee of this company is authorized to make any warranty whatsoever.

OUR GREAT BEDDING BARGAIN COLLECTION

100 Fine Bulbs for only \$3.00, postpaid to you, each item packed separately and plainly marked for effective planting. You can have a splendid flower bed in spring by planting this collection according to diagram on next page.

5 Single White Tulips
5 Double White Tulips
5 Single Pink Tulips
5 Double Pink Tulips
5 Single Scarlet Tulips
10 Striped Crocus
10 White Crocus
10 Yellow Crocus

5 Double Scarlet Tulips
5 Single Crimson Tulips
5 Double Crimson Tulips
5 Single Orange Tulips
5 Double Orange Tulips
10 Purple Crocus
10 Light Blue Crocus

YOU WILL BE PLEASED WITH THE QUALITY OF BULBS RECEIVED FROM US

DUTCH BULBS

AND WHAT CAN BE DONE WITH THEM

The most beautiful and satisfying and the most easily grown of all our flowers, are those raised in the house and garden during the winter and spring months from "Dutch Bulbs," at a time when their beauty can best be appreciated because of the absence of others flowers. Nothing in the floral world surpasses the bulbous flowering plants in richness or purity of flowers, and their coloring ranges from the most delicate shades to the gorgeoussness of Oriental splendor. Among these we find the delightfully fragrant and beautiful Hyacinths, the showy Tulips, the elegant and popular Narcissus, the stately Lilies, the pretty little Crocus, and many other equally handsome kinds.

ORDER EARLY.—Bulbs arrive from Holland about September 15th. The best time to order is just as soon as you receive this catalogue; then your order will be filled as soon as bulbs are received. Orders filled in rotation upon arrival of stock, and if yours is on file you are sure to receive choice fresh bulbs and get your order in full. Sometimes stock is exhausted later in fall and some items cannot be supplied to late customers. Please use the order sheet, as it makes it more convenient for us in filling orders. Terms are invariably cash with order, as we keep no book accounts in our mail order department, and the expense of sending goods C. O. D. is quite large. Postage stamps received as cash.

OUR PRICES.—Our constant aim is to make the highest quality the first consideration, and next to put our prices as low as good stock can be sold.

CHARGES PREPAID.—All Bulbs and Plants, except those noted, are sent prepaid by mail or express by the quickest and most direct routes unless ordered otherwise, and we guarantee their safe arrival.

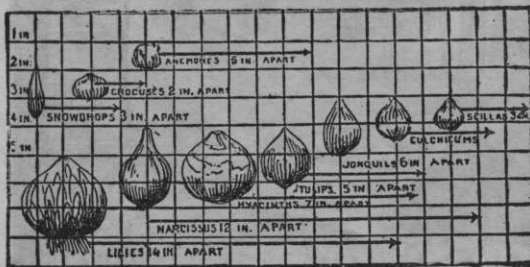


DIAGRAM FOR PLANTING BULBS.

The real secret of successful bulb culture lies in buying the very best bulbs. Months of daily care may be lavished upon an ordinary Hyacinth, and the result will be disappointing; and again there is no comparison between the pleasure one gets out of a bulb that bears one Daffodil and a bulb that produces three to five golden trumpets.

The other secret of bulb culture is to get a wonderful root growth before the stem begins to shoot up; light soil, plenty of water and a cool, dark place will accomplish this. Our bulbs are imported direct by us; are solid, heavy and possess the hardness to resist wet and cold. We handle only the best varieties of each kind.

In the garden no single class of plants affords the pleasure that the hardy, spring-flowering bulbs do, but during the fall, as we see our summer favorites one by one falling and fading, we are liable to forget that this is the time to plant our bulbs in the garden for early spring blooming, and also to prepare our window gardens in the house for flowers during the winter months.

GOOD LUCK COLLECTION

FOR INDOOR PLANTING.

- | | |
|----------------------|-------------------------|
| 2 Red Hyacinths | 2 Paper White Narcissus |
| 2 White Hyacinths | 2 Golden Spur Narcissus |
| 2 Von Sion Narcissus | 2 Chinese Sacred Lily |

12 CHOICE BULB POSTPAID FOR \$1.50



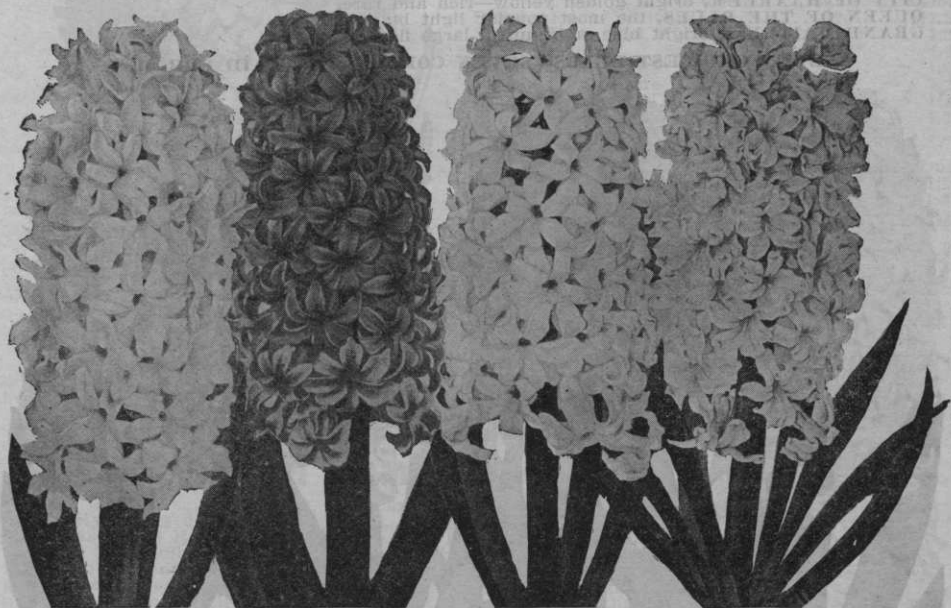
THE NATIONAL BANNER COLLECTION IS SATISFACTORY, IN OR OUT DOORS

HYACINTHS

The Hyacinth is undoubtedly the "Queen of Bulbous Flowers." It has been improved for centuries and there are thousands of varieties, but after personal inspection of the fields in Holland we offer the following named varieties as being suited for general culture and believe they will give satisfaction. Personally, we prefer the single flowered sorts.

FOR INDOOR PLANTING.—In Glasses.—Fill glass with pure soft water until the water touches bottom of the bulb, drop in a piece of charcoal to keep water from fouling, and place glass in a cool, dark place until the roots nearly fill the glass. Change the water if necessary to keep it pure. When fully established bring to light and sunshine. In Pots.—Use compost of sand, well-rotted cow manure and garden mould in equal parts. Plant one bulb in a four-inch pot. Set in cool, dark place about four weeks then bring to light and sunshine.

FOR OUTDOOR PLANTING.—Make beds a foot in depth, of compost outlined above, raised slightly above the surrounding surface for drainage. Plant bulbs six inches apart and when ground freezes cover with a few inches of leaves or coarse manure.



GERTRUDE

GRAND MAITRE

QUEEN OF THE PINKS

LADY DERBY

Iowa Seed Company's Best Named Varieties

SINGLE FLOWERING VARIETIES.

GERTRUDE.—This is the most beautiful of all and is well illustrated by the accompanying cut. It is a single, bright red, with large, superbly shaped truss, compact and attractive in every way. Often has twin spikes. Each 20c; 6 for 90c; dozen \$1.75.

LA GRANDESSE.—A splendid snow-white flower, large perfectly double bells, forming a long spike. Each 20c; 6 for 90c; dozen \$1.75.

QUEEN OF THE BLUES.—Finest porcelain or light blue; has large, perfect spike and color is unusually attractive. Each 20c; 6 for 90c; dozen \$1.75.

L'INNOCENCE.—Single pure white; very large close spike, blooms early and is fine for glasses. Each 20c; 6 for 90c; dozen \$1.75.

MARIE.—Rich purple blue; enormous spike; erect habit; splendid for bedding. Each 20c; 6 for 90c; dozen \$1.75.

QUEEN OF THE PINKS.—A lovely brilliant pink, large bells and massive spike. Each 20c; 6 for 90c; dozen \$1.75.

MADAME VAN DER HOOP.—Pure waxy white; very large bells; one of the best, either for indoors or bedding. Each 20c; 6 for 90c; dozen \$1.75.

CITY OF HAARLEM.—The best of the yellow Hyacinths, color clear bright golden yellow. Extra large, dense truss with round dome-like top. Each 20c; 6 for 90c; dozen \$1.75.

LADY DERBY.—A leading pink variety owing to its lovely shade of rose-pink, its perfect spike, and splendid forcing qualities. Each 20c; 6 for 90c; dozen \$1.75.

LA VICTOIRE.—This is a bright red Hyacinth of exceptional merit. The color is a rich shade of scarlet red. Spikes very fine. Each 20c; 6 for 90c; dozen \$1.75.

GRAND MAITRE.—Deep porcelain blue. A clear and beautiful shade of color. Truss of extra large size and a splendid flower. Each 20c; 6 for 90c; dozen \$1.75.

KING OF THE BLUES.—Blackish purple. The darkest shade we offer. A strong flower of good quality, valuable for contrast as it cannot fail to attract the eye. Each 20c, doz. \$1.75.

OUR NAMED HYACINTHS ARE STRICTLY FIRST GRADE AND BEST VARIETIES

RAINBOW HYACINTH COLLECTION

We offer this to our friends as the choicest bargain in hyacinths for indoor planting or for outdoors where a few choice flowers of different colors are desired. There are seven varieties, each a different shade, ranging from pure white to deep blue. Specimen flowers are shown in the illustration on this and preceding page, but we cannot show the actual colors in a black and white photograph. The bulbs offered are extra large size, selected for soundness and are first class in every respect. For the painstaking amateur no collection in this catalogue will afford so much satisfaction. It may be used in lieu of our window box collection offered on the inside front cover but we specially recommend them for specimen plants, each one to be planted in a four or five-inch pot.

L'INNOCENCE, pure white—recognized as the best white.

LADY DERBY, soft rose pink or bluish white—dainty.

QUEEN OF THE PINKS, bright pleasing pink—a most lovely color.

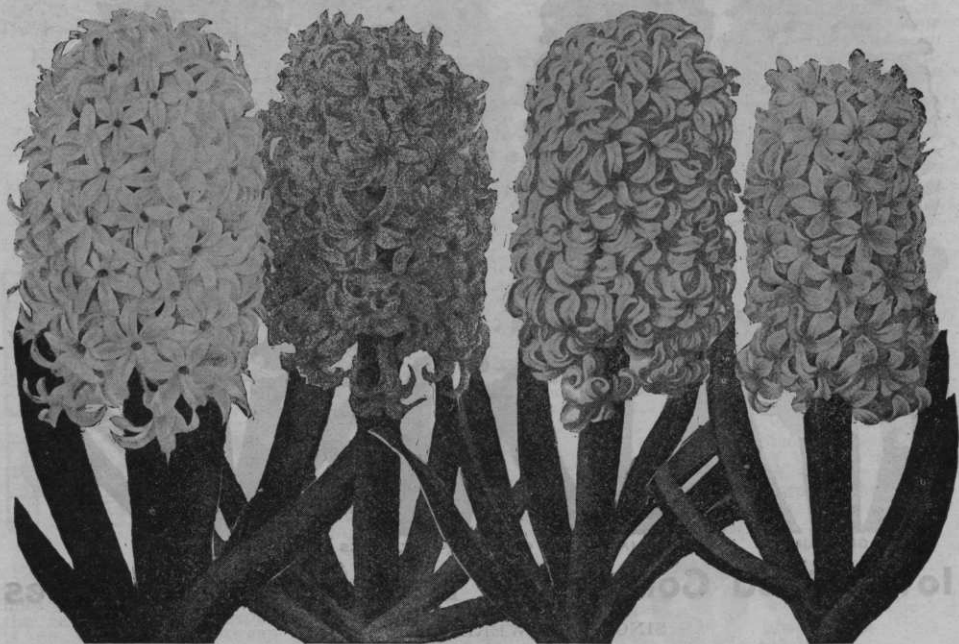
GERTRUDE, bright red—the most popular color in hyacinths.

CITY OF HAARLEM, bright golden yellow—rich and rare.

QUEEN OF THE BLUES, the most popular light blue variety.

GRAND MAITRE, a bright blue, a beautiful large flower.

SEVEN CHOICEST BULBS—SEVEN COLORS—POSTPAID FOR \$1.25.



L'INNOCENCE

QUEEN OF THE PINKS

CITY OF HAARLEM

LA GRANDESSSE

Iowa Seed Company's Best Named Varieties

DOUBLE VARIETIES.

BLOKSBERG.—Bright porcelain blue. In our judgment this is the best double blue in the long list of varieties. It makes a good truss and blooms well either in or out of doors. Bulbs are selected stock first grade. Each 20c; 6 for 90c; dozen \$1.75.

BOUQUET ROYAL.—Fine light pink, tinged salmon with darker center, making a rather composite colored spike when full grown, but the general appearance is bright and pleasing. Extra large spike. First quality bulbs. Each 20c; 6 for 90c; dozen \$1.75.

CHESTNUT FLOWER.—Extra large truss of exquisite bright rose pink, like the flowers of the Horse Chestnut. Each 20c; 6 for 90c; dozen \$1.75.

NOBLE PAR MERITE.—Fine, compact spikes of large, double flowers, as perfect as little roses. Shell-pink deepening to peach-carmine. Each 20c; 6 for 90c; dozen \$1.75.

SOVEREIGN.—Apricot, pink center, a variety which will contrast well with the other sorts that we list. Each 20c; 6 for 90c; dozen \$1.75.

LA TOUR D'AUVERGNE.—A quick growing, early white variety, which is very popular because it blooms in advance of ordinary sorts and extends the length of the hyacinth season either in the house or in beds. Bulbs extra choice. Each 20c; 6 for 90c; dozen \$1.75.

WE OFFER A SPLENDID LIST OF THE BEST HYACINTHS TO CHOOSE FROM



FIRST-GRADE BEDDING HYACINTHS

BEDDING HYACINTHS

Choice Named Sorts in Separate Colors

Postage paid by us.

To those who do not wish to pay the highest price for best named Hyacinths, we especially recommend this grade for both house and garden culture. Though not so large as the named varieties, they are all choice, selected bulbs and will produce large, symmetrical trusses; especially fine for bedding.

SINGLE VARIETIES

	Each	Per Doz.
Single Pure White.....	12c	\$1.25
Single Rose and Pink.....	12c	1.25
Single Red.....	12c	1.25
Single Light Blue.....	12c	1.25
Single Dark Blue.....	12c	1.25
Single Yellow.....	12c	1.25
Single all colors mixed.....	12c	1.25

DOUBLE VARIETIES

	Each	Per Doz.
Double Pure White.....	12c	\$1.25
Double Rose and Pink.....	12c	1.25
Double Red.....	12c	1.25
Double Light Blue.....	12c	1.25
Double Dark Blue.....	12c	1.25
Double Yellow.....	12c	1.25
Double all colors mixed.....	12c	1.25

SECOND SIZE BULBS.

We can supply colors same as above of both double and single flowers in second size bulbs at 10c each doz. \$1.00, postpaid.

MINIATURE HYACINTHS

"DUTCH ROMANS"

These are the same in habit, form and color as our best named Dutch Hyacinths described on page 4. They are offered by many houses as Dutch Romans, but they are true Hyacinths in everything but size. The bulbs are about as large as white French Romans, being 12 to 15 centimetres in diameter, or half the size of our first grade named hyacinths. The blossoms are in keeping with the size of the bulbs and while the spikes will not be so large as the best named hyacinths, still the blossoms will be of perfect shape, fine in fragrance, and will delight the grower. Owing to the smaller sizes of the bulbs they may be planted like the French Romans, but if planted in beds out of doors should be set no farther than four inches apart.

BARONESS VAN TUYLL.—Color a sand-white; very large flowers; borne on a splendid spike. Early. Each 8c; doz., 80c, postpaid.

LA GRANDESSE.—Finest single white, large spikes and bells. Color a clear waxy-white. Each 8c; dozen 80c, postpaid.

LA VICTORIE.—This is a bright red single Hyacinth of great merit, the color is a rich, even shade of bright red. Each 10c; dozen \$1.00 postpaid.

GIGANTEA.—A popular variety with greenhouse growers, color bluish pink, shaded darker. Spikes are large and flowers single compact. Each 8c; dozen 80c, postpaid.

KING OF THE BLUES.—Dark indigo blue; one of the best of the single Hyacinths, and a splendid forcer or bedder. Each 8c; dozen 80c, postpaid.

GERTRUDE.—Single flowered deep pink or red. A lighter colored and larger flower than the La Victorie and because single flowered Hyacinths are generally preferred over the double ones this is the most popular variety of all the miniatures. Each 10c; dozen \$1.00.

INNOCENCE.—Like its namesake in the large Dutch Hyacinths, this is the best single white flowered variety, and no other Hyacinth except possibly the white French Romans, equals it in purity, fragrance and elegance. Each 10c; dozen \$1.00.

QUEEN OF THE BLUES.—A blue Hyacinth of a fine, bright shade such as this one cannot fail to please every flower lover. It is single flowered, producing fine blooms, which, while not extra large, are particularly lovely in form and color. Each 10c; dozen \$1.00.

GRAND MAITRE.—Rich deep lavender blue, shaded darker; a very popular sort. Splendid for pots or beds. Each 8c; dozen 80c.

YELLOW HAMMER.—Rich yellow color; it is one of the few good sorts of its color. Fine spike and bells single. Each 8c; dozen 80c.



GERTRUDE HYACINTH.

MINIATURE HYACINTHS EITHER FOR INDOOR OR OUTDOOR PLANTING

ROMAN HYACINTHS

The bulbs here offered are the true French grown Roman hyacinths of first quality and grade. They are different from the Dutch hyacinths in that they are not hardy and are not used for outdoor planting. They bloom quickly, generally about 100 days from planting, though the time will vary with treatment given. Use good soil containing some sand if possible and plant a single bulb in a four-inch pot or four bulbs in a seven-inch pot. They generally produce from two to five spikes of flowers from each bulb and close planting will result in a most lovely pot of bloom, such as is shown in our illustration. They are pleasingly fragrant and the white ones are extremely dainty and beautiful. Millions of white Romans are grown by florists for the cut flower trade and they are one of the most popular of flowers because they lend themselves so readily to all classes of the florist's work. The indoor directions for growing the Dutch hyacinths may be followed with the Romans but they need not be kept so long in the dark. After potting allow them

to remain in a cool and dark place for about four weeks, bring them to the light but do not give too much heat until they begin to show flower stalks, after which they may be forced into flower quickly with heat and moisture. A single pan of Romans will scent a room and the fragrance is delightful. If you plant a number of these at one time in separate pans you can vary the time of flowering so as to have a succession of bloom simply by bringing them to the light at different times. Altogether the Roman hyacinth will be found a satisfactory bulb for indoor early winter blooming, and by using also the Dutch sorts you can have hyacinths in bloom in the house all winter long. Owing to the immense demand for Romans by the florists, prices have continued to advance for several years, until their cost is equal to the Dutch varieties, but we are making special low prices that our customers may have these flowers at small cost.

CHRISTMAS WHITE.—The most popular of all. Every window should have several pots of these. The earliest of all, and may be had in bloom by December 1st if planted

early. September planting usually brings them in bloom for Christmas. Exquisite bells, white as the driven snow and very fragrant. Our bulbs are first size and never fail to bloom. Each 15c; dozen \$1.50, postpaid.

BISMARCK.—Sky blue bell. Not quite so early as the white, should be planted ten days earlier if wanted in bloom at same time. A very pleasing flower because of dainty color and delicate fragrance. Blooms freely. Bulbs trifle larger than white. Each 15c; dozen, \$1.50, postpaid.

PINK PEARL.—A beautiful, clear rosy pink color. Rather bright and altogether lovely. This particular shade is a popular color and harmonizes beautifully with the other shades in Roman hyacinths. Not so early bloomer as the white, but about the same as the light blue described above. Each 15c; dozen, \$1.50, postpaid.

YELLOW HAMMER.—A rich golden yellow; the color is one that goes well with any of the others and helps to round out a fine quartet of blossoms. Blooms about the same time as the blue and rose. They are scarce and higher in price. Each 15c; dozen, \$1.50.

THE FOUR ROMANS

One choice bulb each of the four kinds named above. Postpaid for only 50 Cents.

ROMAN HYACINTHS.

IF YOU WANT THEM BY EXPRESS

with other bulbs you may deduct 10 cents per dozen from the prices on the different colored Romans quoted above. For prices by the hundred kindly write for quotations as market fluctuates.

HYACINTH GLASS

Permit only base of the bulb to rest in water. Delightful ornaments when hyacinth is in bloom. When the hyacinths are through flowering, the glasses are just the thing to hold cut flowers. Amaryllis Formosissima and a few other bulbs may be grown in same way. After placing the bulb in the glass it should be kept in a dark place until the roots have made a good growth. They are made of an excellent grade of clear glass. Can only be sent by express at purchaser's expense. Each 60c.

TALL PLAIN

DON'T OVERLOOK THE ROMAN HYACINTHS FOR WINTER BLOOMING

SINGLE EARLY TULIPS

A most gorgeous and satisfactory spring flower, and nothing is more showy on the lawn than a nice bed of Tulips, blooming, as they do, so early in the spring. Their ease of culture combined with beauty of form and gorgeous coloring, makes them the most popular bulbs for spring blooming, and for winter flowering in the greenhouse and window garden they are incomparable.

DIRECTIONS FOR PLANTING.

The soil for the tulip bed should be strong and rich, with sand sufficient to make it pliable. If the subsoil is clay or extra heavy it is best to take out the soil to a depth of eight inches and new soil should be made of compost outlined in the instructions for Hyacinths on page 4. The early varieties for massing or beds should be planted about 5 inches apart. The larger Darwin sorts should be planted about 6 inches apart in beds. Among the shrubbery or in borders they can be placed as desired. Set them at least 5 inches under the surface and after the ground

freezes cover them with several inches of leaves or litter, allow to remain till all frost is out of the ground in spring. It is not necessary that the tulip be protected but the covering helps to slower growth and our experience is that tulips bloom best and grow tallest and most robust when they grow slowly. Tulips can be grown in pots in the house, allowing a 4-inch pot for a single bulb or four bulbs may be planted in a 7-inch pan. In growing them indoors they should be kept in a cool dark place for three months after planting, so that they may

gain full root growth before top growth begins. A cave or root cellar which is kept at low temperature is best for this purpose and only a limited amount of water (just enough to keep the earth moist) should be given them until they are brought to the living rooms for blooming, after which time plenty of water and as much sun as possible should be given. If the flower begins to bloom prematurely, or before the stem is grown, place a paper cone over the bulb, leaving a hole about 2 inches in diameter at top of cone. This will tend to draw the flower up to the light and thus lengthen the stem.

Many planters use Snowdrops, Scillas or Crocus to plant between the Tulips in fall-planted beds, so that they may have earlier flowers than furnished by the Tulips and a longer display of blossoms in one bed. It is suggested also that early and late flowering Tulips planted alternately in a bed will furnish Tulips in bloom for fully thirty days in spring. Others set pansy plants between the Tulip bulbs and after frost cover the beds so that the pansies survive and come into bloom in spring just as the tulips are fading away.

Many prefer to destroy the Tulip bed as soon as the blooms have passed and set the bed to Geraniums or other summer bedding plants. No matter in what manner you choose to use the Tulip it will certainly give you abundant returns in flowers for the small sums invested.

No. 1—Dusart.

No. 2—Yellow Prince

No. 3—Cottage Maid.

No. 4—LaReine.

TRIAL COLLECTION OF SINGLE EARLY TULIPS

One Dusart, One Yellow Prince, One Cottage Maid, One LaReine (White Queen), One Keiserskroon, five fine bulbs, five different colors, postpaid for 30 cents.

FOUR COLLECTIONS --20 BULBS-- FOR \$1.00 POSTPAID.

SEE THE BACK COVER PAGE FOR SPLENDID OFFER OF EARLY TULIPS

SINGLE EARLY TULIPS



KEISERSKROON

LA REINE.—The best white, second early variety, growing 9 inches high. More of these are forced than any other sort and they are produced in immense numbers by the Holland growers. They make a splendid sort to contrast with *Coleur Cardinal* or *Belle Alliance*. Each 6c; dozen 60c; 100 for \$5.00.

PINK BEAUTY.—Large cup-shaped flowers; brilliant rose and pink with white base and yellow throat, feathered white up center of each petal. Each 10c; dozen \$1.00; 100 for \$8.00.

PRESIDENT LINCOLN.—(Queen of the Violets.)—A pretty shade of light violet; very beautiful and showy. Each 10c; dozen \$1.00; 100 for \$8.00.

ROSE GRIS-DE-LIN.—Similar to *Cottage Maid* in tints, but a little brighter in color. It is earlier and more dwarf than that variety, blooming at not over 6 inches high. Popular in Europe because of this habit. Not suitable to grow with other sorts in our list but splendid as a single bedder. Each 7c; dozen 75c; 100 for \$6.00.

YELLOW PRINCE.—The most popular yellow variety for forcing and indoor growing. They grow tall and the shape of the flower is ideal. Planted outdoors it blooms second early and as it ages the flower deepens in shade. Quite fragrant. Each 7c; dozen 75c; 100 for \$6.00.

ARTUS.—A splendid flower of dark scarlet. Not so bright in color as *Belle Alliance* but a richer shade. Height 9 inches, second early. Each 6c; dozen 60c; 100 for \$5.00.

BELLE ALLIANCE.—The best, highest priced and most popular scarlet tulip. A brilliant blossom. Height 9 inches, second early. Each 7c; dozen 75c; 100 for \$6.00.

COLEUR CARDINAL.—Rich, glittering cardinal red, a grand variety; it is unrivaled for late forcing and for bedding. Each 10c; dozen \$1.00; 100 for \$8.00.

COTTAGE MAID.—A beautiful and attractive flower which cannot be portrayed in black and white. It is bright pink suffused white in center of petals. Among the last to bloom of the early tulips and rather dwarf. A splendid sort for solid bed. Each 7c; dozen 75c; 100 for \$6.00.

CHAMOISIE BRILLIANT.—A lighter shade than *Belle Alliance* or *Artus*, being bright vermillion red. A flaming color especially attractive in borders or among herbaceous plantings or shrubbery. Beautiful for solid color effects. Second early, 9 inches high. Each 7c; doz. 75c; 100 for \$6.00.

CHRYSOLOREA.—Probably the best pure yellow second early tulip for bedding. Offers splendid contrast with *Coleur Cardinal*, blooming about the same time and growing about same height. Each 7c; dozen 75c; 100 for \$6.00.

DUCHESS OF PARMA.—A second early variety, growing 9 or 10 inches tall. Peculiarly attractive flower of orange yellow, shading to terra cotta, with fiery yellow and brown markings; the whole making a composite flower of great beauty. Will be specially attractive as an indoor bloomer. Each 6c; dozen 60c; 100 for \$5.00.

DUSART.—Intense cardinal red; extra fine and brilliant. Each 7c; dozen 75c; 100 for \$6.00.

GOLDEN QUEEN.—The finest golden yellow; flowers very large, of globular shape. Ea. 9c; doz. 90c; 100 for \$7.00.

KEISERSKROON.—(See cut.)—Probably the most popular variety for bedding. Flower is bright red, with broad yellow tip, a contrast so bright as to instantly attract attention. Grows tall, blooms medium early and is of strong, robust habit. Desirable for shrubbery or border planting as the bright colors brighten whatever situation it occupies. Owing to immense demand prices are high, yet we have placed it on a level in price with other and cheaper sorts. Bulbs are large and heavy. Each 8c; doz. 80c; 100 for \$6.50.



A GOOD RANGE OF COLORS IS OFFERED IN SINGLE TULIPS

SPECIAL MIXTURES OF EARLY TULIPS

We offer two grades of tulips in mixtures of all colors. Our first grade or "Best" are mixed by ourselves. To make this mixture we buy large quantities of the best named varieties and take equal numbers of each to secure the widest range of color from the best and most perfect bulbs. We are careful to select varieties that grow to similar height and bloom about the same. Where a wide range of types and colors are wanted we recommend our "Fine" mixed grade, which are grown for us in Holland. These are really second size bulbs, but the mixture contains many varieties and types, which we do not list separately and the difference in size is so slight that it is not discernible. When you consider that we pay the postage at the prices here named you can readily see that real bargains are offered in both our "Best" and "Fine" mixed tulips.

Fine Mixed Single Tulips—Per dozen 50c; 100 for \$4.00
 Fine Mixed Double Tulips—Per dozen 60c; 100 for \$5.00
 Best Mixed Single Tulips—Per dozen 60c; 100 for \$5.00
 Best Mixed Double Tulips—Per dozen 75c; 100 for \$6.00

EARLY FLOWERING DOUBLE TULIPS

These are not so popular for bedding as the single flowered sorts but the individual flowers are striking in form, size and color, and are greatly liked for vases and interior decoration. Grown in borders or in clumps among shrubbery they are really fine. We only list a half dozen named varieties but they are the best in each division and we give you a very nice diversity of color. The bulbs we offer are carefully selected and are the best obtainable. They are large, strong and well matured, and will produce splendid flowers.

SCHOONOORD.—Color a pure snow-white. It is considered the finest double-white. Each 7c; dozen 75c; 100 for \$6.00.

MURILLO.—(Albino).—Blush white, shaded rose. One of the daintiest of tulips and one of the most popular varieties. A favorite with florists for greenhouse production. There is hardly enough color in it to use alone for bedding, but it will work in nicely with the brighter colored sorts. Each 6c; dozen 60c; 100 for \$5.00.

GLORIA SOLIS.—Of enormous size and very double. A deep crimson bordered with a broad gold band. Each 10c; dozen \$1.00; 100 for \$8.00.

TOURNESOL.—A striking flower of orange scarlet with broad yellow tips and yellow base. The most brilliant contrasting shades and will attract attention in any planting or collection. Needs no other kind to make contrast. Each 10c; dozen \$1.00; 100 for \$8.00.

LUCRETIA.—Beautiful deep rose. Extra fine for winter blooming in pots. Each 9c; dozen 90c; 100 for \$7.00.

RUBRA MAXIMA.—Dazzling ruby-red, face of petals green. Very large flowers, fine for forcing or bedding. Each 8c; dozen 80c; 100 for \$6.00.

TRIAL COLLECTION DOUBLE TULIPS.

One Schoonoord, One Murillo, One Gloria Solis, One Tournesol, One Lucretia, One Rubra Maxima—Six fine bulbs, all different, postpaid, 40c.
Four Collections, \$1.40 Postpaid.

AMARYLLIS

The Amaryllis is pre-eminently a window-garden plant for the amateur, producing under the simplest

conditions gorgeous trumpet-shaped blooms. It is adapted for planting in water in hyacinth glasses.

FORMOSSISSIMA.—(Jacobian Lily).—Is of extremely rich, velvety crimson. Free bloomer and succeeds well in pots or open ground. Each 20c; 3 for 50c; dozen \$1.75.

ATAMASCO.—A fine little bulb for summer blooming; bears pink flowers. Plant closely. Each 15c; dozen \$1.25.



See inside back cover page for
"SPRINGTIME" TULIP BED
 100 bulbs four colors, best sorts
\$5.00 Postpaid

No. 1—Gloria Solis.

No. 2—Murillo.

No. 3—Schoonoord.

No. 4—Rubra Maxima.

WE LIST ONLY THE CHOICEST VARIETIES OF DOUBLE TULIPS

DARWIN TULIPS

These originated as seedlings of some of the Bybloom tulips in the north of France, were adopted by Holland planters and named "Darwin" after the great naturalist of that name. They are unusual among tulips for the clear colors, substance and lasting quality of the blooms, and the strong, robust growth of the entire plant. They come into bloom in May, if planted outdoors, and by keeping them covered until all the frost is out of the ground they may be had in bloom as late as June 1st, especially if planted in shaded situations or among shrubbery and herbaceous borders. Grown indoors they may be bloomed in March and are splendid for this purpose if kept cool and only allowed to grow slowly. The flowers are models of form, and cover a great variety of both dainty and richly brilliant coloring, ranging from white, through blush, pink, rose, salmon red and crimson to rich ox-blood reds; from lavender, through mauve, and light blue to violet and purple; from light brown through various brown shades to maroon and black. In nearly all of them the centers of the flowers are distinctly and beautifully marked.

CLARA BUTT.—Soft pink, shaded salmon and tinged blush pink. Its perfect shape and lovely color make it a real beauty. Undoubtedly the most popular of its class. Each 8c; dozen 80c; 100 for \$6.00.

HARRY VEITCH.—A brownish crimson flower with large violet and white center. A tall growing and strikingly beautiful sort which has been awarded certificate of merit at the Amsterdam (Holland) shows. One of the best of the Darwins for growing indoors. Each 9c; dozen 90c; 100 for \$7.00.

NAUTICUS.—This dainty and beautiful sort is bright cerise or purplish rose color and produces great large flowers on long stems, and is one of the best for forcing. Listed by Holland growers as one of their choicest varieties. Each 9c; dozen 90c; 100 for \$7.00.

FARNCOMBE SANDERS.—One of the largest and most beautiful of all Darwins; color brilliant, dark rosy red, with a clear-white base. Each 10c; dozen \$1.00; 100 for \$8.00.

MASSACHUSETTS.—Color a vivid pink. Flowers very large. Each 10c; dozen \$1.00; 100 for \$8.00.

PAINTED LADY.—Milk-white, faintly tinged soft heliotrope when opening. A beautiful flower somewhat resembling a water lily. Each 9c; dozen 90c; 100 for \$7.00.

PSYCHE.—Very large bold flowers of rich rosy-pink outside; inside silvery rose. Each 9c; dozen 90c; 100 for \$7.00.

WHITE QUEEN.—Large globular flowers of pure white, tinted blush when opening. Each 9c; dozen 90c; 100 for \$7.00.

PRIDE OF HAARLEM.—One of the best. Deep rose color, shading to scarlet and offering the brightest flower of the Darwin list. Grows 18 to 20 ins. tall and are splendid in borders, beds or as cut blooms. Each 10c; dozen \$1.00; 100 for \$8.00.

THE SULTAN.—Sometimes offered as the Black Tulip or Tulip Noire. Color is a very dark, rich maroon and it is most striking in mixed plantings or in cut bouquets. Each 10c; doz. \$1.00; 100 for \$8.

BARON DE LA TONNAYE.—Vivid pink, margined lighter blush. One of the leading bedders of the Darwins. The flowers are large, well formed and keep their brightness to the last. The stems are very tall and strong, holding the flowers perfectly upright. Each 9c; dozen 90c; 100 for \$7.00.

MIXED DARWIN TULIPS.—A mixture affording a good range of colors and varieties at a low price. Each 6c; dozen 60c; 100 for \$5.00.

TULIPS FOR BEDDING

We offer here both the single and double flowered tulips in different colors that can be used to good advantage for bedding purposes.

It requires quite a large number of tulip bulbs to make much of a bed and if you intend to plant liberally you will find it advantageous to buy from this list. It will not be possible to save you very much except you buy a hundred bulbs or more. An ordinary round bed, 5 feet in diameter would require 250 bulbs, and 6 feet diameter should have 300 bulbs, to plant it properly. A square or oblong bed can be estimated by allowing ten bulbs for each square foot of space and six to eight bulbs per square foot will be about right for ribbon beds or borders. These estimates are for solid beds where lots of color is wanted and is based on planting closely together (4 inches); but if looser planting will answer they may be planted 5 inches apart, which will reduce the estimates about one-fourth. The selection of colors and the design of the bed is a matter of individual taste. Personally we recommend beds of one variety or color as frequently the different varieties in a bed will bloom at different times, or grow to different height, so that the effect is not so pronounced as hoped for. For borders, or in shrubbery, a mixture may be used to good advantage since the effect sought is different from that of a formal bed.

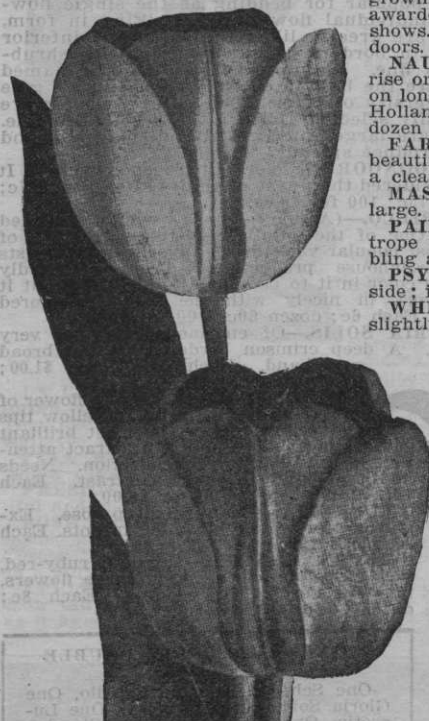
SINGLE FLOWERED.

	Per doz.	Per 100
White60	\$4.50
Pink60	4.50
Scarlet60	4.50
Orange60	4.50
Crimson60	4.50
Single, all colors.....	.50	4.00

DOUBLE FLOWERED.

	Per doz.	Per 100
White75	\$5.50
Pink75	5.50
Scarlet75	5.50
Orange75	5.50
Crimson75	5.50
Double, all colors.....	.60	5.00

YOU CAN GET SPLENDID RESULTS FROM THIS LIST OF DARWINS



DARWIN TULIPS

LATE TULIPS

Late Tulips are specially valuable, blooming from middle of May till after Decoration Day. Taller than the early varieties; their long, graceful stem and beautifully-formed blossoms place them among our most highly prized spring flowers; keep a long time after being cut.

PARROT TULIPS

These are late flowering tulips of striking and fantastic forms. Flowers are large and the illustration gives but a general idea of the odd, yet beautiful form of the blossoms. They bloom during May usually and can be had in full bloom on Memorial Day by keeping them covered late in spring. We offer in these a splendid mixture of colors which will produce striking and showy effects. A bed of these in bloom is truly beautiful and every garden should have them. Each 6c; dozen 60c; 100 for \$5.00.

BYBLOOM TULIPS

Large, late May-flowering Tulips; extra large flowers on tall stems. The ground coloring of these is white with stripes, blotches and markings of crimson, pink, scarlet, rose, violet, lilac and shades of blue. Striking and effective for late flowers and especially fine for cut flowers because of contrasting colors. Mixed colors, each 7c; per dozen 70c; per 100 \$5.00.

BIZARRE TULIPS

Similar in habit and manner of growth to the Byblooms, but the ground color of the flowers is yellow. Harmonize finely with the above and are even more striking in appearance and brighter in coloring. Each 7c; per dozen 70c; per 100 \$5.00.

MAY FLOWERING OR COTTAGE GARDEN TULIPS

The most popular strain of Tulips at the present time because they are perfectly hardy and can be planted among hardy herbaceous beds and borders where they may be allowed to remain without being disturbed for a number of years. They present all the shades and markings found in the other classes of Tulips; are late flowering and will certainly prove satisfactory.

ISABELLA.—Carmine rose shaded with cream and suffused silvery white. Very beautiful. Each 7c; doz., 70c; 100 for \$5.00.

GESNERIANA SPATHULATA.—Beautiful rich scarlet with blue center. Very large flower. Tall grower. It should be planted in generous quantity. Each 7c; doz., 70c; 100 for \$5.00.

INGLESOMBE YELLOW.—Immense globular, rich yellow flowers; has been aptly called the "Yellow Darwin," blooming at the same time as the Darwins, and supplying the lack of yellow in the Darwin class. Each 7c; doz., 70c; 100 for \$5.00.

INGLESOMBE SCARLET.—Color a brilliant scarlet with black base; flowers exceptionally large. Each 7c; doz., 70c; 100 for \$5.00.

BOUTON D'OR.—Golden yellow, with black anthers; a very showy bedder and excellent for cutting. Deepest yellow Tulip in existence. Each 7c; dozen, 70c; 100 for \$5.00.

PICOTEE.—Pure white, daintily edged with pink, which suffuses the entire flower as it ages; a beautiful cut flower. Each 7c; doz., 70c; 100 for \$5.00.

COTTAGE GARDEN MIXED.—A wide range of different sorts and colors. Doz., 60c; 100 for \$5.00.

LATE MIXED TULIPS

This mixture contains Darwins, Byblooms, Bizarres, Cottage Garden, Parrots and many other types of late blooming tulips and are recommended for borders among shrubbery or for planting among hardy perennials for permanent beds. They will be interesting and attractive because of the wide diversity of types and variety of colors. Dozen 70c; 100 for \$5.00.

CEMETERY COLLECTION OF TULIPS.

This collection is offered to such of our customers who would like to have a fine show of lovely flowers on the cemetery lot at Memorial Day. Just enough for a small bed planted closely.

6 Giant Darwin, 12 Byblooms, 12 Bizarres, 12 Parrot Tulips, postpaid for \$1.75.

MEMORIAL DAY TULIP BED.

One dozen Giant Darwin Tulips for the center; two dozen Byblooms and two dozen Bizarres for the center, and one hundred Parrot Tulips for the outer rows. 160 bulbs that in ordinary seasons will be in full bloom on Memorial Day with a splendid show of color. Postpaid for only \$7.50.

READ THIS PAGE CAREFULLY THERE ARE DELIGHTFUL TULIPS OFFERED

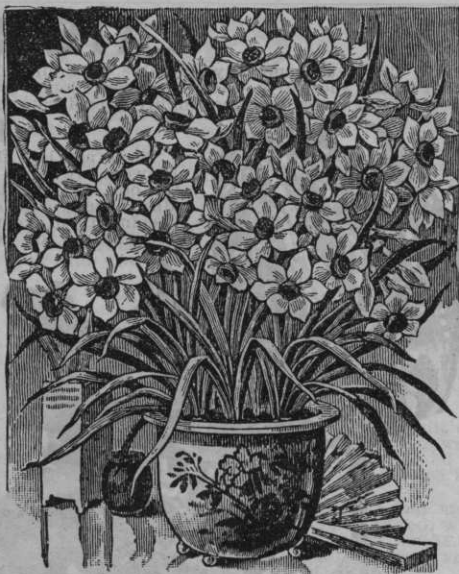
POLYANTHUS NARCISSUS

This class of Narcissus is not hardy in the north and we only list the one variety which is most suitable for indoor growing. Thousands of the Paper White variety are grown in greenhouses for the Christmas and winter trade in cut flowers. It is claimed that this type of Narcissus may be grown outdoors with winter protection but we prefer to recommend them only for indoor culture. They are desirable because they are easy to grow and bloom quickly. They make the best specimens if two or three bulbs are planted in a six or seven inch pot, but do nicely if planted singly in a four inch pot or may be forced in water in a hyacinth glass.

PAPER WHITE GRANDIFLORA.—This beautiful, graceful variety can be made to bloom in December. There is no more satisfactory bulb for house cultivation; its clusters of snow-white flowers are deliciously fragrant. They are perhaps more largely forced for cutting than any other narcissus, tons of them being used for the large flower markets of the world. Remember we pay the postage at the prices here quoted and as the bulbs are large and heavy this is quite an item of saving in cost to you.

Mammoth Bulbs.—Larger than hyacinths, exceptionally solid and heavy. Sure to give satisfaction. Each 10c; dozen \$1.00; 100 for \$8.

First Size Bulbs.—Such as are usually grown by florists and amateurs; of satisfactory size and quality. Each 9c; dozen 90c; 100 for \$7.00.



PAPER WHITE GRANDIFLORA NARCISSUS

CHINESE SACRED LILY

This is now the most popular of all bulbs for winter blooming because it is generally of the easiest culture. It is a variety of Polyanthus Narcissus grown by the Chinese



CHINESE SACRED LILY

to decorate their sacred temples or Joss Houses on their New Year's Day, which occurs in February. They produce a profusion of bloom in a short time, usually not more than four to six weeks from time of planting. The foliage is luxuriant and of a dark green color, surmounted by a wealth of large, satiny white, fragrant flowers with golden yellow cup.

CULTURE.—Being partly aquatic, this plant must have plenty of water. If grown in soil, make it light and sandy, but they are usually grown in vases or dishes of water. Put an inch of gravel in the dish, set the bulbs on this and put gravel around them to keep from falling over; fill dish with water and set in a dark closet for several days until the roots start freely; then bring to light and keep in any ordinary living room. A dozen bulbs started in this way at intervals will give a succession of bloom all winter. The bulbs offered by us are large, solid, and well matured. They can be relied upon to be the true Chinese, and not inferior Bermuda grown stock. Price 35 cents each; 3 for \$1.00.

BEAUTIFUL LILIES

LONGIFLORUM.—(Easter Lily.)—This mammoth white trumpet lily, with flowers 4 to 5 inches long, is one of the best lilies for winter blooming, because its grand trumpet-shaped flowers which give forth a delicate perfume, are wonderfully beautiful and expressive. When planted in the open ground they should be protected during the winter. Manage like Harrisii for indoor blooming. Each 35c; 3 for \$1.00.

CANDIDUM.—The old-fashioned pure white garden lily. Very hardy. Flowers snow white with very heavy stamens and sweet fragrance. Bears from three to twenty blossoms. This variety must be planted in the early autumn to succeed well, as it makes its leaf growth at once after planting and prepares itself for early blooming. It is beautiful set in clumps of about a dozen, or in rows for a permanent border. Each 25c; dozen \$2.75.

LILIES ARE ALWAYS A SOURCE OF GREAT PLEASURE. ALL ARE DESIRABLE

READ THIS PAGE CAREFULLY. THERE ARE DELICIOUS TULIPS OFFERED

NARCISSUS, or DAFFODILS

The narcissus listed on this page are hardy sorts suitable for outdoor growing and can also be used for indoor planting. They can be grown with success in permanent plantings and will continue to flower year after year without attention. Are recommended by the foremost authorities for ornamental plantings in borders or shaded situations and give delightful effects in woodland landscapes.

DOUBLE VON SION.—The first of the list in popularity. It is the true Daffodil, of beautiful golden yellow color which is so highly prized by lovers of spring flowers.

First Size Bulbs.—The ordinary first grade containing many double nosed bulbs, are large and strong and will give satisfaction. Each 9c; doz. 90c; 100 for \$7.00.

EMPEROR.—Extra large flowers, both trumpet and petals yellow. Tall and fine. Bulbs very large, strong and solid. The most splendid of single yellow Narcissus for indoor growing. Each 8c; dozen 80c; 100 for \$6.00.

EMPRESS.—Extra large flowers, trumpet yellow, petals white. Fit companion for the Emperor with all its stateliness and beauty. Each 8c; dozen 80c; 100 for \$6.00.

VICTORIA BICOLOR.—A bicolor famous for its large and durable flowers, which stand boldly erect. Broad perianth of creamy-white, large, broad, fluted trumpet of rich yellow. A strong grower and splendid keeper. A grand variety for either garden or pot culture. Each 8c; dozen 80c; 100 for \$6.00.

GOLDEN SPUR.—Similar to Emperor in color and habit, but more free flowering. The variety most used by florists for winter forcing. Will often produce three to five flowers from each bulb. Each 9c; dozen 90c; 100 for \$7.00.

ALBA PLENO ODORATA.—(Double Poeticus).—Each 7c; dozen 70c; 100 for \$5.00.

POETICUS ORNATUS.—Similar to above but cup is a shade lighter color, and this variety blooms somewhat earlier. Is preferred to the above for indoor planting. Each 7c; dozen 70c; 100 for \$5.00.

NARCISSUS POETAZ

A new family of Daffodils that produce their flowers in clusters, and in extreme free-flowering qualities. Very attractive and much admired.

ASFASIA.—White perianth, yellow cup. Each 9c; doz. \$1.00; 100 for \$8.00.

ELVIRA.—Broad white petals of great substance and golden yellow cup edged deeper orange; very free flowering. Each 9c; doz., 90c; 100 for \$7.00.

FREESIA

PURITY.—A splendid new pure white sort of this beautiful flower. Absolute purity of color, extra large flowers and splendid perfume make it very desirable. Each 5c; dozen 50c.



FREESIA

EMPEROR
AND
EMPRESS
NARCISSUS

THESE NARCISSUS CAN BE GROWN EITHER IN OR OUT OF DOORS

EARLY SPRING FLOWERING CROCUS

This is one of the first flowers that peep through the snow to announce the approach of spring. It should occupy a prominent place in your outdoor plantings. They are extremely lovely, planted in massed beds, and a beautiful and striking bed can be made by massing the yellow, purple and white shades. Mixed and variegated flowers are desirable for group plantings or for scattering through the lawn or in herbaceous borders. The named varieties are effective in pots, but they are only to be planted in this manner if they may be kept in a cool place until midwinter. They will not do well in heated rooms. The bulbs range in size from 1 to 2 inches in diameter and are easily planted in sod or borders with a dibber. As they flower very early they are out of the way before the lawn needs mowing in spring and before the ordinary herbaceous flowers have grown very large. Plant three inches deep and for massing about 2 inches apart.

Half a dozen bulbs may be planted in a 5-inch pot. Plant during October or November and keep bulbs in a cool dry place until ready to use them. Our bulbs are strong and of select quality and will give results with but little labor or expense.

MIXED WHITE.—These will not be all pure white but there will be only a small proportion of color in any one flower, so that the general effect in mass or single planting will be white. Per dozen 25c; 100 for \$2.00.

MIXED YELLOW.—Not so large as Mammoth Yellow listed below, but satisfactory for ordinary planting both as to size of bulb and flower. Useful for quantity planting because of low price. Dozen 25c; 100 for \$2.00.

MIXED STRIPED AND VARI-GATED.—These will not only be attractive in contrast with other shades but there is so great variation in the mixture that it will make a splendid bed if only this mixture is used. Per dozen 25c; 100 for \$2.00.

MIXED PURPLE AND BLUE.—Beautiful shades and markings, suitable for any planting, but especially effective in masses. Favorites because of unusual colors. Dozen 25c; 100 for \$2.00.

ALL COLORS MIXED.—A good mixture containing the different shades of color found in crocus. Dozen 25c; 100, \$2.00.

CLOTH OF GOLD.—A very fine flower of yellow veined and striped with brown, making an attractive and pleasing contrast. Will be noticed in a bed of mixed colors by its oddity. We offer fine, strong bulbs which will produce strong flowers. Per dozen 35c; 100 for \$2.50.

CLOTH OF SILVER.—The ground color of flower is silvery white, with veinings of light blue. A dainty blossom and a popular variety. This and Cloth of Gold make a nice show planted either alternately for color or massed each variety as a part of the bed. Dozen 35c; 100 for \$2.50.

MAMMOTH YELLOW.—The largest yellow flowered variety and the largest bulbs. The color is bright, golden yellow and will be striking in any situation. Desirable for every kind of planting and will be especially attractive on the lawn. Dozen 35c; 100, \$2.50.

PRESIDENT LINCOLN.—A handsome deep purple flower and one of the largest varieties. Splendid for contrast massing with white or yellow sorts. Choice bulbs of good size, grown specially for us. Per dozen 35c; 100 for \$2.50.

SIR WALTER SCOTT.—A dainty and beautiful flower of white groundwork, striped and veined light purple. Planted in a solid bed there is enough color to make a pleasing contrast and it goes well in

masses of purple or yellow sorts. Per dozen, 35c; 100 for \$2.50.

MONT BLANC.—A fine large, pure white flower. Recommended as the best of the white varieties. Useful in mass planting or for mixed beds. Shows nicely on the lawn or in borders. Per dozen 35c; 100 for \$2.50.



- Nos.
1. Cloth of Silver.
2. Sir Walter Scott.
3. Mont Blanc.
4. Mammoth Yellow
5. President Lincoln

YOU CANNOT AFFORD TO OVERLOOK CROCUS IN YOUR PLANTING

HARDY FLOWERING PLANTS

TRANSPLANTED SUCCESSFULLY IN THE FALL BEFORE OR AFTER FROST.



CANTERBURY BELLS.

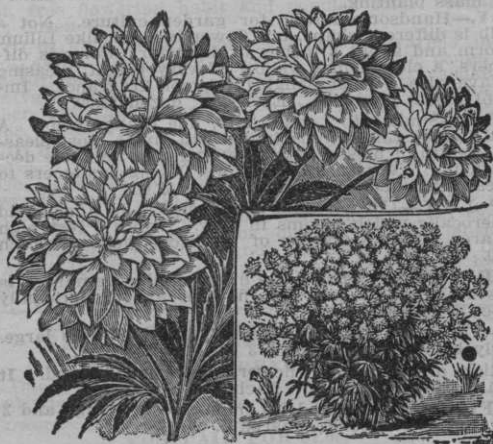
bright blue flowers, blooming continually from June until frost. Handsome in clumps. Each 25c; dozen \$2.50.

GOLDEN GLOW

A glorious hardy plant that should find a place in every garden. It is of fine habit and vigorous growth. The stems are long and gracefully poised. It attains a height of six to eight feet, and will produce hundreds of bright yellow blooms during August and September, each as large as a good sized Chrysanthemum. It is of easiest culture. Nice for a screen row at back of lawn. Price 20c; dozen \$2.00.

SWEET WILLIAM

Well known, free blooming, hardy perennial plants which produce masses of lovely, brilliant, sweet-scented flowers through a long period, making a splendid effect in beds. One foot high. Flowers borne on heads or umbels, with individual flowers nearly an inch across. Color white, pink, crimson, carmine, purple, etc., with eyes and rich markings. Mixed each 15c; dozen \$1.50. Field grown clumps each 25c.



GOLDEN GLOW (RUDBECKIA).

ACHILLEA

THE PEARL.—Beyond question, the finest of all plants for cemetery planting. The flowers are good sized, forming a beautiful plant eighteen inches high, completely covered with pure white flowers from July until frost. We cannot too highly recommend this for general planting. Each 15c; dozen \$1.50.

AQUILEGIA

These beautiful flowers, often called Columbines, are always beautiful and attractive, reminding one of the woods. Many handsome colors. Each 15c; dozen \$1.50. Large clumps 25c.

FOXGLOVE

(Digitalis).—These are most satisfactory summer flowering hardy perennials, succeeding under almost all conditions, and with but trifling attention will give a wealth of flowers during June and July. They are used extensively with good effect in shrubberies and in other shady situations. Each 15c; dozen \$1.50. Large clumps 25c.

CANTERBURY BELLS

We can furnish the single flowered only in mixed colors. Each 15c; dozen \$1.50.

COLUMBINE

The Columbines are old favorite late spring and early summer blooming plants growing about 2 feet high, that succeed in any ordinary garden soil. The varieties offered are a selection of best kinds. Each 15c, dozen \$1.50. Large clumps each 25c.

DELPHINUM

FORMOSUM—(Hardy Larkspur).—Long spikes of



HARDY GARDEN PINKS.

HARDY GARDEN PINKS

Dwarf hardy plants that will grow anywhere and increase in beauty every year. Delightful clove-like fragrance. Price, each 25c; dozen \$2.50.

HER MAJESTY.—Grand variety; plants grow to large size, spreading and producing immense number of pure white, double flowers.

ELSIE.—Bright rose with maroon center. A general effect pleasing and attractive.

HOMER.—Flower contains a dark center in bright red ground color.

ESSEX WITCH.—Flower is a delicate pink in color, finely fringed.

SOUV. DE SALLE.—Soft rosy pink, very double.

MIXED VARIETIES.—Desirable for large beds or borders. Each 20c; dozen \$2.00.

ORDER BEST NAMED VARIETIES AT ONCE. STOCK RAN OUT LAST YEAR

FRENCH IRIS

The true "Fleur-de-Lis," the national flower of France. Perfectly hardy, thrive anywhere, grow and bloom luxuriantly. Any of the French Iris named below 15c each; dozen 1.50. Large field-grown clumps each 35c; doz. \$3.50.

ALEXANDER HUMBOLDT.—Standards violet, falls purple, veined white. Large, bold flower in clusters of five on strong stems.

CELESTE.—Large open flower of pure celestial blue, changing to porcelain blue as it ages. Profuse blooms well above the foliage.

FLAVESCENS.—Standards are cream white, falls primrose veined bronze. Tall growing, late blooming variety.

FLORENTINA.—Rich indigo blue throughout. Flowers large, first in bloom and quite lasting. A very satisfactory sort.

FLORENTINA ALBA.—The best white iris. A lovely soft shade of color, very early and fine. Plant with Florentina for contrast.

HONORABLE.—Standards bright yellow, falls chestnut brown, veined white. Free bloomer. Striking in contrast planting.

LA TENDRE.—Standards lavender, falls light blue, thickly veined violet. A very pleasing, clean, bright color.

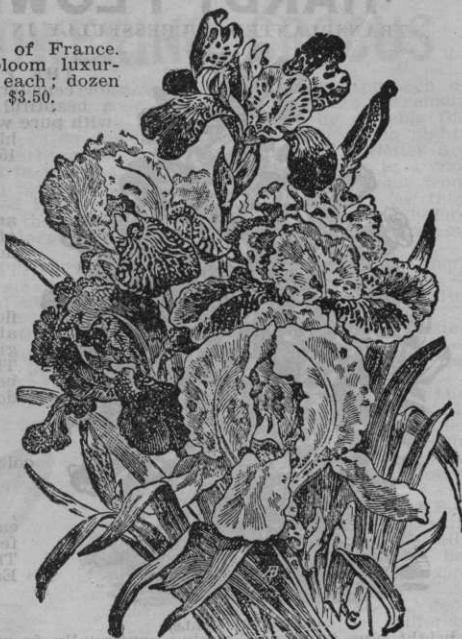
MADAME CHEREAU.—Pearly white, edged with broad margin of violet. Flowers crumpled beautifully. A satisfactory late variety.

GIPSY QUEEN.—Standards a rich cream yellow. Falls deep purple, shaded bronze. Medium height. Free bloomer.

PRESIDENT THIERS.—Standards mauve, penciled brown at base. Falls purple, striped brown and white. Tall and vigorous.

SANS SOUCI.—Unique color combination, violet and yellow, flushed apricot. Blooms freely and holds its flowers well.

SHAKESPEARE.—Standards light yellow, veined seal brown, falls deep carmine violet. Striking in beauty with clean cut colors.



FRENCH IRIS

SUCCESION IRIS BED

One plant each of the twelve named sorts of French Iris, giving a contrast of color from first early spring to the middle of June. Postpaid, for only \$1.60. This collection in field-grown clumps for immediate use, \$4.00.

JAPANESE IRIS

Among the most beautiful of summer-flowering plants. Immense size; exquisite coloring. Think of a plant sending up to a height of three feet, a dozen flowering spikes, each one bearing two to four blossoms eight or ten inches across, and of the most beautiful markings and combinations of colors—white, indigo, purple, bluish yellow, etc. Except the Orchid, no other can compare with this flower; easily grown in any good garden soil. Plant with full exposure to sun. Mixed colors, each 20c; dozen \$2.00.



LEMON LILY.

HEMEROCALIS LILIES

Hardy, herbaceous plants that multiply rapidly. Very desirable for clumps and mass planting.

LEMON LILY.—Handsome flower for garden culture. Not a true lily, as bulb is different shape, but flower is much like *Lilium Speciosum* in form and about 3 inches in diameter. Color is different from others, a clear lemon yellow of very bright, pleasing appearance. Have also a most delightful lemon fragrance. Immense amount of bloom produced. Each 20c; dozen \$2.00.

ORANGE LILY.—Similar to Lemon Lily, fine orange color. A bed of these and Lemon Lilies intermingled will give a most pleasing effect and a wealth of blossoms will be available for table decorations or bouquets. We wish all our flower loving customers to try the two lilies mentioned. Each 20c; dozen \$2.00.

BUTTERCUP LILY.—(*Hemerocallis Thunbergi*.)—Is a splendid variety of *Hemerocallis* which blooms in July. Grows 4 feet high and produces large lily-like flowers of buttercup yellow. Each 20c; dozen \$2.00.

GLOBE de ORR.—This is one of the finest of the *Hemerocallis* lilies. Color is rich yellow and the flowers are exceptionally large. Each 35c; 3 for 80c.

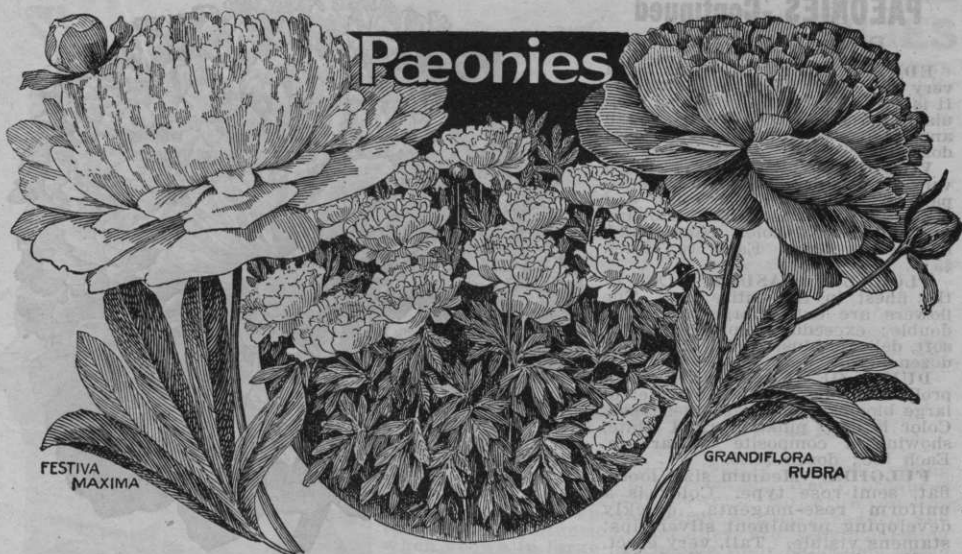
DR. REGEL.—The color is a clear lemon yellow; flowers large. It is a very early bloomer. Each 35c; 3 for 80c.

ALTRINA.—Rich orange color; flowers open, cup-shaped. It is sometimes called buttercup lily. Each 35c; 3 for 80c.

SPECIAL OFFER.—We will send 2 Lemon and 2 Orange and 2 Buttercup Lily bulbs for \$1.00, postpaid.

FRENCH IRIS ARE SPLENDID FOR MASS BEDS IN ANY LATITUDE

ORDER BEST NAMED VARIETIES AT ONCE. STOCK RAN OUT LAST YEAR



Floral specialists have given this flower great care and attention, until there are now over a thousand named varieties, many of them curiously beautiful in shape and color. It is truly a noble flower rivaling the rose in brilliancy of color and perfection of bloom, while greatly surpassing it in size and stately grandeur. One writer has well said that the "Paeony fully equals the rose except in poetry, perfume, thorns, bugs and disease." They are of the easiest culture, most vigorous habit, and free from disease and insects. The foliage is rich, glossy and ornamental, even when plants are not in bloom. Many of the newer varieties are quite fragrant and no other flower is so well adapted for large showy bouquets. Plant paeonies this year, plant lots of them in rows, beds or as specimen plants on the lawn. They make a grand show. Fall is the best time to set out the roots and they will then begin blooming the next spring and each year become stronger and better. Plant in September, October, or any time before the ground freezes and protect slightly the first winter if planted late. They may be left undisturbed for twenty years or more. In planting set the crowns two inches below the surface. We pay the postage.

WHITE PAEONIES

FESTIVA MAXIMA.—By far the finest double white Paeony. The flower is of immense size, perfectly globular, the guard petals being large while the inner petals are crimped. Color purest snow white with a few slight carmine marks in the center. A bloom of exquisite beauty and the favorite for bouquets and vases. Each 50c; dozen \$5.00.

QUEEN VICTORIA.—Very double, and compact; color flesh white, white center, petals are lightly spotted with red. A half dozen of these flowers make a magnificent bed. This is the popular variety for mass planting, owing to low cost, free flowering habit and popular color. Each 40c; dozen \$4.00.

COURONNE D'OR.—This is a peculiar variety in form, as the blooms are rather flat, but in the center is a tuft of white, with a few crimson splashes like Festiva Maxima. It grows medium height and blooms rather later than other white sorts. Strong and vigorous. Each 50c.

GOLDEN HARVEST.—This is probably the nearest approach to a yellow Paeony. Outer petals light bluish, light yellow center. Very prolific, bearing flowers in clusters of three. Each 60c; dozen \$6.00.

MARIE LEMOINE.—A rare and a magnificent variety; flowers are enormous, opening a light blush pink, changing to white when flower is mature. It is a late bloomer. Very scarce and considered by specialists as the choicest Paeony in the list. Each 50c; dozen \$5.00.

TRICOLOR PAEONY BARGAIN

THREE DIFFERENT COLORS

One white, one pink, and one red, our choice of varieties, but good plants and will produce good flowers. A real bargain this season.

POSTPAID FOR \$1.00.



QUEEN VICTORIA

PAEONIES SHOULD BE GROWN BY EVERYONE. THEY ARE SATISFACTORY

PAEONIES -Continued**PINK AND ROSE**

EDULIS SUPERBA.—This is a very large, full flower of light pink. It is an old variety, but is still popular because of its strong growth and immense clumps. Each 40c; dozen \$4.00.

VICTORIA TRICOLOR.—Is a very large, full flower; outer petals pale rose, inner petals white and center bright rose, thus showing three shades of color, from which it takes its name. Each 50c; dozen \$5.00.

FLORAL TREASURE.—One of the finest in the entire list. The flowers are extra large and very double; exceedingly prolific; color soft, delicate blush pink. Each 50c; dozen \$5.00.

DUKE OF CLARENCE.—Most prolific bloomer in list. Wonderful large blooms somewhat coneshaped. Color is deep pink, overlaid white, showing a composite appearance. Each 50c; dozen \$5.00.

FULGIDA.—Medium size, loose, flat, semi-rose type. Color is a uniform rose-magenta, quickly developing prominent silver tips; stamens visible. Tall, very erect, medium late bloomer. Each 60c; dozen \$6.00.

DUCHESSE D'ORLEANS.—Medium large compact flower. Guards are deep pink, center shaded salmon, with silvery reflex. Fragrant. Extra strong, tall free bloomer. Each 60c; dozen \$6.00.

DELICATISSIMA.—Large rose type. Color a pale lilac-rose. Fragrant. Very strong, tall grower, free bloomer. Similar to Floral Treasure. Each 60c; dozen \$6.00.

ALEXANDER DUMAS.—Medium size, light violet-rose, crown creamy white, collar of narrow petals, mingled with the wide center petals. Fragrant. Medium height. Good cut flower variety. Each 60c; dozen \$6.00.

BRIGHT AND DARK RED PAEONIES

FELIX CROUSSE.—This is a most beautiful solid flower of bright red color, differing from most sorts in that the solid flower has practically no division of outer petals and center. Very double, late flowering. Each 75c, dozen \$7.00.

PRINCE IMPERIAL.—Deep, purplish crimson, shining and satiny. The flower is very double, rich and striking and blooms early. A splendid sort for contrast with the lighter shades. Each 60c; dozen \$6.00.

GRANDIFLORA RUBRA.—Has extra large balls of blood red, magnificent flowers. Probably the largest red variety that is in existence, often 8 to 9 inches across. Give it rich soil and you will be surprised at its growth. Each 75c; dozen \$7.00.

RUBRA TRIUMPHANS.—An early blooming and very sweet flower, rich, brilliant, glowing, satiny crimson. Ea. 50c, doz. \$5.



DUKE OF CLARENCE



GRANDIFLORA RUBRA PAEONY.

FIVE FAVORITE PAEONY COLLECTION

REMARKABLY FINE FOR A PERMANENT BED.

Free bloomers, flowers of largest size, and contrast in colors will afford the greatest opportunity for mixed bouquets of these wondrous blossoms. These are the most gorgeous flowers, and this the greatest opportunity in all our hardy plant department.

Festiva Maxima.—White, blotch of red in center.

Queen Victoria.—Like above, somewhat smaller.

Floral Treasure.—Light rose pink; very fine.

Duchesse D'Orleans.—Bright pink, brighter than above.

Grandiflora Rubra.—Deep blood red.

Five Favorite Paeonies \$2.50

WE HAVE A SPLENDID PAEONY PLANTATION AND OFFER BEST VARIETIES
PAEONIES SHOULD BE GROWN BY EVERYONE. THEY ARE SATISFACTORY



TIGER LILIES

TIGRINUM SPLENDENS.

—An improved Tiger Lily growing sometimes 5 feet high and producing large pyramids of orange red flowers spotted with black. Each 30c, doz. \$2.00.

TIGRINUM.—The common form of Tiger Lily which is still a favorite and has held its popularity for so many years. The striking flowers of orange red, spotted black, are very bright and attractive. When established they continue for many years and are worthy a place in any garden. Each 15c, dozen \$1.50.

LILY OF THE VALLEY

A well-known and universally admired spring flowering plant, bearing bell-shaped, freely produced and powerfully fragrant flowers. To grow in the open ground one should select a partly shaded and rather moist situation, and they are very charming when grown in large patches as their handsome green leaves and lovely sprays of flowers make a beautiful effect together. When once planted and established

the crowns increase in number and the larger ones flower each year without attention. Now is the time to set out a bed of these delightful flowers. Plant a small bed of them by all means and they will be good for a lifetime. Our price is low for choice stock such as we send out. Four strong roots for 25c; dozen 75c.

DAY LILY

BLUE.—Like above, lovely blue, borne on tall spikes. Each 20c; dozen \$2.00.

VARIEGATED.—Beautifully mottled dark green and pure white leaves, lilac flowers. Each 25c; dozen \$2.50.

GAILARDIA

GRANDIFLORA.—Begin to flower in June and continue one mass of bloom the entire season. Will thrive in almost any position or in any soil, but respond freely to liberal feeding. Being perfectly hardy they require absolutely no protection. The

flowers large, $2\frac{1}{2}$ to $3\frac{1}{2}$ inches in diameter. On long stems. Center dark reddish brown. Petals brilliant scarlet, crimson, orange and vermilion. Ea. 15c; doz. \$1.50

PLATYCODON

(Wahlenbergia)

A bushy, herbaceous plant 2 to 3 feet, with handsome, deep green foliage and bearing grand clusters of beautiful white, lavender and blue, large, bell-shaped flowers; blooms very profusely and continuously all summer. Each 20c.

SHASTA DAISY

A beautiful flower which can be grown out of doors by anybody where it is not cold enough to kill oak trees. It is perennial, blooming better and more abundantly each season. The flowers are extremely large and graceful, averaging about four inches in diameter with three or more rows of petals of purest glistening whiteness, and are borne on single, stiff, wiry stems, nearly 2 feet in length. Strong plants, 15c each; dozen \$1.50.

YUCCA

FILAMENTOSA.—(Adam's Needle.)—Tropical looking plant with long, narrow leaves, remains green entire year. Grows in clumps and throws up flower stalks from 3 to 4 feet high, from which hang 100 to 300 creamy white, bell-shaped flowers. It blooms a long time. Ea. 15c; doz. \$1.50. Strong 2-year-old 30c.



SHASTA DAISY AND YUCCA ARE SUITED TO NATURAL OR FORMAL PLANTING