

BULBS^{AND} PLANTS

FOR HOME ADORNMENT



SUPPLEMENTARY
- BARGAINS -

Of new and
choice bulbs
and delightful
plants.

WINDOW BOX HYACINTH COLLECTION

IOWA SEED COMPANY

DES MOINES, IOWA

"WINDOW BOX" HYACINTH COLLECTION

TWELVE CHOICE BULBS, ALL DIFFERENT, AT AN EXTREMELY LOW PRICE, QUALITY CONSIDERED

For this collection we buy a special grade of hyacinths, paying a premium to secure first class stock. They are sound and solid and will produce fine, large flowers. We include in this collection both double and single sorts so that you may have both types and in dozen bulbs you will have a dozen different colors, no two being alike. From our experience with hyacinths we offer you this as a special bargain and believe you cannot do better for the small sum asked for this collection: 1 Single White, 1 Single Pink, 1 Single Red, 1 Single light Blue, 1 Single Dark Blue, 1 Single Yellow, 1 Double White, 1 Double Pink, 1 Double Red, 1 Double Light Blue, 1 Double Dark Blue, 1 Double Yellow—

TWELVE BULBS, ALL DIFFERENT—OUR BEST GRADE OF UNNAMED HYACINTHS—A WIDE RANGE OF COLOR AND BEAUTY.

Postpaid for Only 75 Cents Anywhere in the United States



National Banner Collection

"RED, WHITE AND BLUE."

A fine collection for those who want a few hyacinths only. The Romans will bloom early and the Dutch sorts later so that a succession may be had from Christmas time until in March. By purchasing two or three of these collections you can have several plants in bloom most of the winter. One Dutch Hyacinth, red; 1 Dutch Hyacinth, white; 1 Dutch Hyacinth, blue; 1 Roman Hyacinth, red; 1 Roman Hyacinth, white; 1 Roman Hyacinth, blue—6 fine bulbs, postpaid, 33 cents. Four collections (24 bulbs) for \$1.25 postpaid. Four collections for \$1.00, customer to pay express.

Christmas Collection

The bulbs in this offer are for early planting in September and will furnish fine, fragrant flowers, and handsome table decorations during December and the holiday period. Planted in October or later they will come into bloom during the winter when flowers are wanted. Consists of 4 Paper White Grandiflora Narcissus, 2 Chinese Sacred Lilies, 4 Roman Hyacinths (four different colors), 12 choice Freezia and 12 dainty Grape Hyacinths—34 bulbs in all for only \$1.00, postpaid. Will send half collection for 60 cents, postpaid. Two full collections sent by express, customer paying charges, for only \$1.50.



Fifty Years Successful Business

IOWA SEED CO.

"Seedsman to the American People"

By this we mean not only native born Americans, but all residents of this country

Des Moines, Iowa, August, 1915

To Our Many Friends:

This catalogue is sent only to our floral customers, as it is issued to offer to our friends, bulbs, hardy plants and shrubs for fall planting in the open ground; and bulbs, blooming plants and supplies for beautifying the home with a bright window garden of lovely blossoms during the bleak winter months when we are shut indoors by ice and snow and freezing cold. We acknowledge deep obligations to you for your patronage. Our volume of business increased heavily this spring and our list of customers is greater than ever. We are, however, continuously striving to increase our business and we ask your orders for such goods in this list as you can use, assuring you we shall do our utmost to give you satisfaction in quality of stocks supplied.

If you want any articles not offered in this catalogue, we will be pleased to have your inquiries and we will give them prompt attention. We suggest if you do not have a copy of our complete catalogue for this year (1915) that you have one mailed to you, as it offers a full and complete line of merchandise for farmers, gardeners, horticulturists and flower lovers. It is had for the asking.

ABOUT WARRANTIES.—Nothing is sent out which we do not believe to be good in every respect, but we want it plainly understood that while we exercise great care to have all seeds, bulbs and plants pure and reliable, and also true to name, we do not give any warranty, express or implied. If purchaser does not accept goods on these terms and conditions, they are to be returned at once, and the money that has been paid for same will be refunded. No officer, agent or employe of this company is authorized to make any warranty whatsoever.

Some of Our Other Department Catalogues

FARM SEEDS.—We have this year issued a special farm seed catalogue of 36 pages offering seasonable seeds for midsummer and fall sowing. This booklet tells how to manage alfalfa, cowpeas, sweet clover, cane, rape, millet and many other special crops that may be raised after the small grain harvest. If you are interested ask for a copy of our "Midsummer Catalogue." It will be mailed without charge.

POULTRY SUPPLIES.—We carry a most complete line of all poultry supplies, including our own specially prepared foods for fowls, apportioned in such way as to afford a perfectly balanced ration. We issue a handsome 36-page illustrated catalogue devoted to this department which will be mailed free upon request.

BIRD DEPARTMENT.—We handle many varieties of parrots, canaries and cage birds and issue an illustrated catalogue of birds and supplies, and also issue regularly special bulletins describing the stock on hand at time of mailing. Send for this catalogue and the bulletins, which are mailed free,

and you will be in position to secure the best offerings.

AQUARIA DEPARTMENT.—We offer in our Bird Catalogue several varieties of beautiful gold fish, together with globes, tanks and general aquaria supplies, and in a separate catalogue we offer a complete line of lovely seashells. These are shown true to nature by means of 300 specially prepared illustrations and the shell catalogue will be sent free if you want it.

CUT FLOWERS AND DESIGNS.—Orders for these goods should be addressed to Iowa Floral Co., Box 874, Des Moines, Iowa. If so addressed they do not get into the seed mail but go direct to the floral department for immediate attention the instant they are received. Promptness is absolutely essential in handling this class of business and the above address for your orders will save several hours. We issue a special catalogue illustrating set pieces, decorations, etc., and also issue a monthly price current quoting values. We will be pleased to mail these without cost to you and solicit your orders, as we are sure we can please you.

Our Complete Seed Catalogue for 1916

Will be ready January 1st, next

It illustrates and describes all of the best new and standard sorts of Flower, Vegetable, Field and Farm Seeds, Flower Plants, Bulbs and Nursery Stock, as well as Lawn and Garden Tools, and Poultry Supplies of all kinds, of which we have the largest and most complete stock in the West. It also lists a great many sterling novelties which we have tested and found worthy to offer our customers. If you are a customer it will be sent without request, but if we should overlook you in any way and you do not get your copy by January 15th next, we suggest you write for one. We will also be pleased to mail it to any of your neighbors whom you think would be interested.

SPECIAL AUTUMN OFFERS

FROM THE

IOWA SEED CO., Des Moines, Iowa

HOLLAND BULBS

HYACINTHS

NARCISSUS

TULIPS, CROCUS

LILY OF THE VALLEY

LILIES OF THE FIELD

PAEONIES, IRIS

HARDY PHLOX

HERBACEOUS PLANTS

HARDY SHRUBS AND

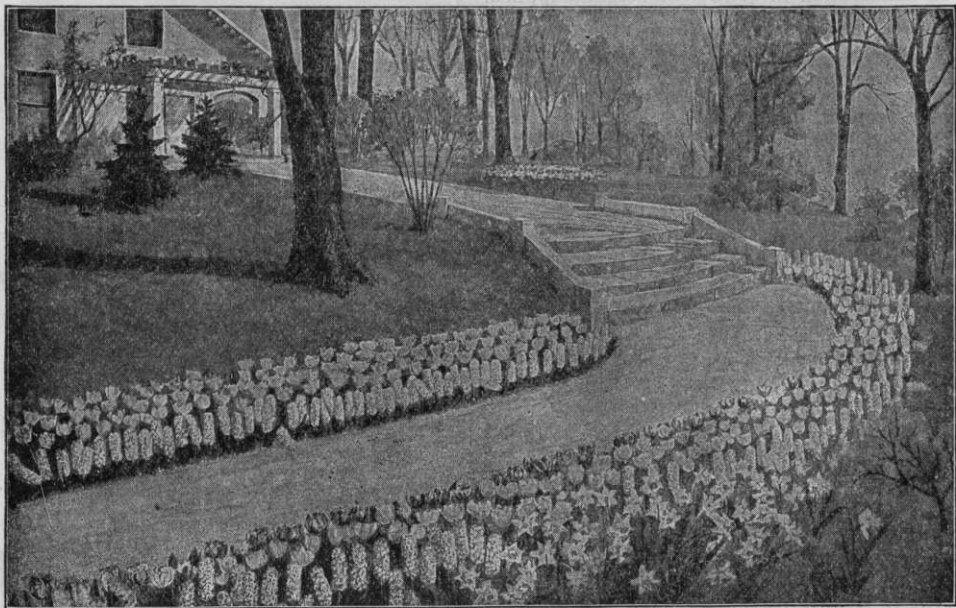
VINES FOR FALL

PLANTING

ORDER EARLY.—Bulbs arrive from Holland about September 15th. The best time to order is just as soon as you receive this catalogue; then your order will be filled as soon as bulbs are received. Orders filled in rotation upon arrival of stock, and if yours is on file you are sure to receive choice fresh bulbs and get your order in full. Sometimes stock is exhausted later in fall and some items cannot be supplied to late customers. Please use the order sheet, as it makes it more convenient for us in filling orders. Terms are invariably cash with order, as we keep no book accounts in our mail order department, and the expense of sending goods C. O. D. is quite large. Postage stamps received as cash.

OUR PRICES.—Our constant aim is to make the highest quality the first consideration, and next to put our prices as low as good stock can be sold.

CHARGES PREPAID.—All Bulbs and Plants, except those noted, are sent prepaid by mail or express by the quickest and most direct routes unless ordered otherwise, and we guarantee their safe arrival.

**ASPARAGUS FERNS**

BEGONIAS

CARNATIONS

CHRYSANTHEMUMS

FERNS, GERANIUMS

LANTANAS, PALMS

ROSES AND

BASKET PLANTS

PLANT STANDS

FLOWER POTS

PLANT FOODS

AND SUPPLIES

OUR GREAT BEDDING BARGAIN COLLECTION

130 Fine Bulbs for only \$1.25, postpaid to you, each item packed separately and plainly marked for effective planting. You can have a splendid flower bed in spring by planting this collection according to diagram on next page.

5 Single White Tulips
5 Double White Tulips
5 Single Pink Tulips
5 Double Pink Tulips
5 Single Scarlet Tulips
10 White Crocus
10 Yellow Crocus
10 Purple Crocus
10 Light Blue Crocus

5 Double Scarlet Tulips
5 Single Yellow Tulips
5 Double Yellow Tulips
5 Single Orange Tulips
5 Double Orange Tulips
10 Striped Crocus
10 Blue Scilla
10 Snowdrops
10 Ixias

YOU WILL BE PLEASED WITH THE QUALITY OF BULBS RECEIVED FROM US

DUTCH BULBS

AND WHAT CAN BE DONE WITH THEM



The most beautiful and satisfying and the most easily grown of all our flowers, are those raised in the house and garden during the winter and spring months from "Dutch Bulbs," at a time when their beauty can best be appreciated because of the absence of other flowers. Nothing in the floral world surpasses the bulbous flowering plants in richness or purity of flowers, and their coloring ranges from the most delicate shades to the gorgeousness of Oriental splendor. Among these we find the delightfully fragrant and beautiful Hyacinths, the showy Tulips, the elegant and popular Narcissus, the stately Lilies, the pretty little Crocus, and many other equally handsome kinds. Most of these

bulbs are grown in Holland, although some are from France, Italy, China, Japan and the Bermudas. There is nothing prettier or more desirable than a window nicely arranged with these, and a very small assortment will fill the house with fragrance. All are of the easiest culture and no experience is required for their successful management; but they will give better returns for having the treatment advised in this book, and no one can fail

to have "good luck" whether grown out-doors or in the house. It has been well said that "A Dutch bulb can snap its fingers at the most stupid amateur and grow and bloom in spite of him whether the house be light or dark, hot or cold."

WE QUOTE POSTPAID PRICES.

All prices for bulbs and plants in this catalogue are for goods postpaid unless otherwise stated. Persons wanting large orders can generally save some by ordering from our quantity lists where items are quoted unpaid.

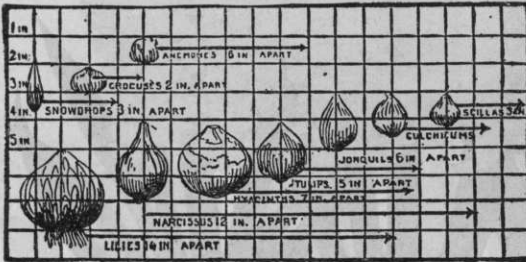


DIAGRAM FOR PLANTING BULBS.

The real secret of successful bulb culture lies in buying the very best bulbs. Months of daily care may be lavished upon an ordinary Hyacinth, and the result will be disappointing; and again there is no comparison between the pleasure one gets out of a bulb that bears one Daffodil and a bulb that produces three to five golden trumpets.

The other secret of bulb culture is to get a wonderful root growth before the stem begins to shoot up; light soil, plenty of water and a cool, dark place will accomplish this. Our bulbs are imported direct by us; are solid, heavy and possess the hardness to resist wet and cold. We handle only the best varieties of each kind.

In the garden no single class of plants affords the pleasure that the hardy, spring-flowering bulbs do, but during the fall, as we see our summer favorites one by one falling and fading, we are liable to forget that this is the time to plant our bulbs in the garden for early spring blooming, and also to prepare our window gardens in the house for flowers during the winter months.

GOOD LUCK COLLECTION

For Indoor Planting.

- | | |
|--------------------------------------|---------------------------|
| 2 Red Hyacinth | 1 Chinese Sacred Lily |
| 2 White Hyacinth | 6 Freezias |
| 2 Von Sion Narcissus | 1 Star of Bethlehem |
| 2 Paper White Narcissus | 12 Grape Hyacinths |
| 2 Poticus Narcissus | 6 Sweet Scented Jonquils. |
| 35 Choice Bulbs Postpaid for \$1.00. | |



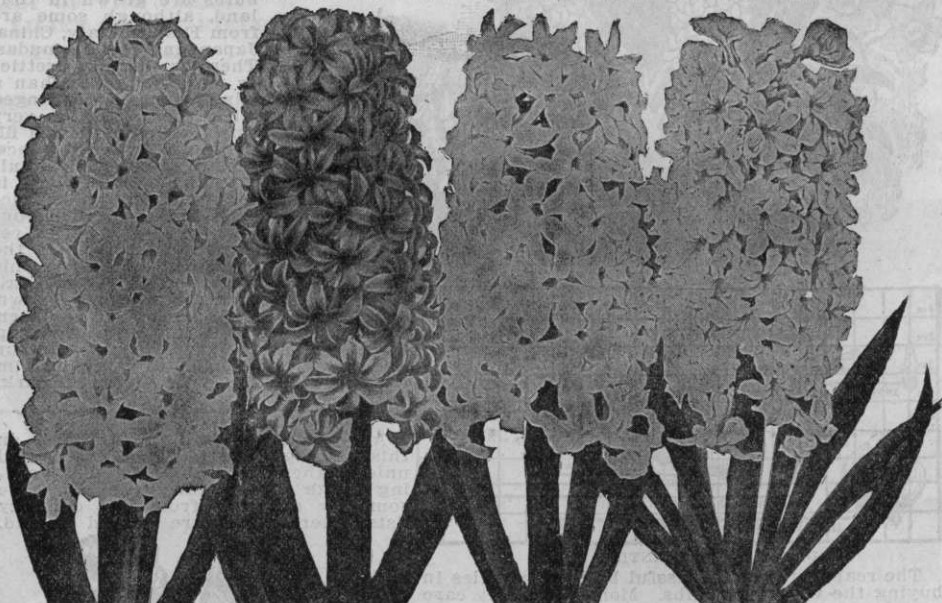
THE NATIONAL BANNER COLLECTION IS SATISFACTORY, IN OR OUT OF DOORS

HYACINTHS

The Hyacinth is undoubtedly the "Queen of Bulbous Flowers." It has been improved for centuries and there are thousands of varieties, but after personal inspection of the fields in Holland we offer the following named varieties as being suited for general culture and believe they will give satisfaction. Personally, we prefer the single flowered sorts.

FOR INDOOR PLANTING—In Glasses.—Fill glass with pure soft water until the water touches bottom of the bulb, drop in a piece of charcoal to keep water from fouling, and place glass in a cool, dark place until the roots nearly fill the glass. Change the water if necessary to keep it pure. When fully established bring to light and sunshine. **In Pots.**—Use compost of sand, well-rotted cow manure and garden mould in equal parts. Plant one bulb in a four-inch pot. Set in cool, dark place about four weeks then bring to light and sunshine.

FOR OUTDOOR PLANTING.—Make beds a foot in depth, of compost outlined above, raised slightly above the surrounding surface for drainage. Plant bulbs six inches apart and when ground freezes cover with a few inches of leaves or coarse litter.



GERTRUDE.

GRAND MAITRE.

MORENO.

FABIOLA.

Iowa Seed Company's Best Named Varieties

SINGLE VARIETIES.

GERTRUDE.—This is the most beautiful of all and is well illustrated by the accompanying cut. It is a single, bright red, with large, superbly shaped truss, compact and attractive in every way. Often has twin spikes. Each 12c; dozen \$1.20.

GIGANTEA.—Grows to enormous size, with broad spikes of bluish-pink color; very handsome. Each 12c; dozen \$1.20.

QUEEN OF THE BLUES.—Finest porcelain or light blue; has large, perfect spike and color is unusually attractive. Each 15c; dozen \$1.50.

L'INNOCENCE.—Single pure white; very large close spike, blooms early and is fine for glasses. Each 15c; dozen \$1.50.

IDA.—Color a most beautiful canary yellow; large spike; best of all single light yellow sorts. Don't fail to get at least one of these. Each 15c; dozen \$1.50.

MORENO.—A beautiful flower of waxy pink. Splendid truss; large bells. Each 12c; dozen \$1.20.

FABIOLA.—A pale light pink of delicate shade and exceedingly fragrant. Each 15c; dozen \$1.50.

GRANDEUR.—White, tinged with rose. A splendid flower with very strong truss. Each 12c; dozen \$1.20.

GRAND MAITRE.—Deep porcelain blue. A clear and beautiful shade of color. Truss of extra large size and a splendid flower. Each 15c; dozen \$1.50.

KING OF THE BLUES.—Blackish purple. The darkest shade we offer. A strong flower of good quality, valuable for contrast as it cannot fail to attract the eye. Each 12c; dozen \$1.20.

L'OR D'AUSTRAIE.—A clear golden yellow with good spike and habit. A rare sort and consequently highly prized. Each 15c; dozen \$1.50.

KING OF THE YELLOWS.—The best of the deep yellow sorts. Darker in shade than any of the other yellow varieties we offer. Each 15c; dozen \$1.50.

OUR NAMED HYACINTHS ARE STRICTLY FIRST GRADE AND BEST VARIETIES

RAINBOW HYACINTH COLLECTION

We offer this to our friends as the choicest bargain in hyacinths for indoor planting or for outdoors where a few choice flowers of different colors are desired. There are eight varieties, each a different shade, ranging from pure white to deep blue. Specimen flowers are shown in the illustration on this and preceding page, but we cannot show the actual colors in a black and white photograph. The bulbs offered are extra large size, selected for soundness and are first class in every respect. For the painstaking amateur no collection in this catalogue will afford so much satisfaction. It may be used in lieu of our window box collection offered on the inside front cover but we specially recommend them for specimen plants, each one to be planted in a four or five-inch pot.

L'INNOCENCE, pure white—recognized as the best white.

FABIOLA, soft rose pink or bluish white—dainty.

MORENO, bright pleasing pink—a most lovely color.

GERTRUDE, bright red—the most popular color in hyacinths.

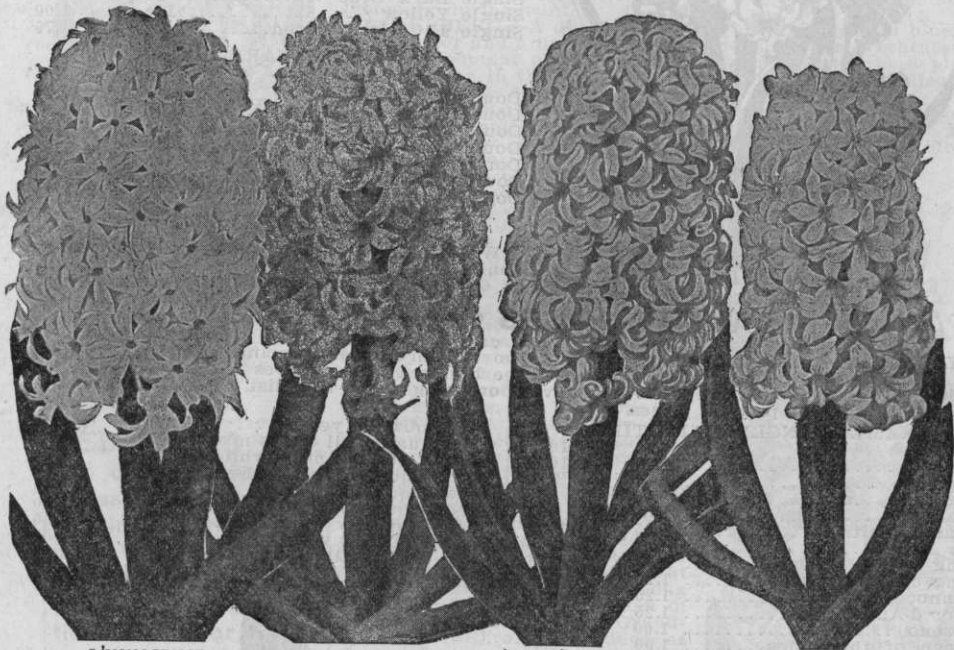
IDA, a soft canary yellow—clearly a superior sort.

L'OR D'AUSTRALIE, bright golden yellow—rich and rare.

QUEEN OF THE BLUES, the most popular light blue variety.

GRAND MAITRE, a bright blue, a beautiful large flower.

EIGHT CHOICEST BULBS—EIGHT COLORS—POSTPAID FOR \$1.00.



L'INNOCENCE.

QUEEN OF THE BLUES.

L'OR D'AUSTRALIE.

IDA.

IOWA SEED CO'S. BEST NAMED VARIETIES

DOUBLE VARIETIES.

BLOKSBERG.—Bright porcelain blue. In our judgment this is the best double blue in the long list of varieties. It makes a good truss and blooms well either in or out of doors. Bulbs are selected stock, first grade. Each 12c; dozen \$1.20.

BOUQUET ROYAL.—Fine light pink, tinged salmon with darker center, making a rather composite colored spike when full grown, but the general appearance is bright and pleasing. Extra large spike. First quality bulbs. Each 12c; dozen \$1.20.

BOUQUET TENDRE.—The best of the double red sorts. Color is carmine crimson, giving the general effect of a dark red flower. Throws a strong, large spike and is a striking and attractive flower in contrast with other varieties. Each 12c; dozen \$1.20.

GOETHE.—Salmon or light yellow with shade of pink in center. The most popular of the double yellow sorts. An old variety but has not yet been surpassed by the newer yellow flowered varieties. Bulbs are sound and solid but not so large as some other varieties, but are first grade quality. Each 15c; dozen \$1.50.

LA GRANDESSE.—Originated as a sport of the single variety of the same name. It is the one double sort that fully equals in beauty of flower its single flowered namesake. It is called by specialists the best double white for general use, because of strong spike and purity of color. Not so early in bloom as La Tour d'Auvergne and both should be planted to have a succession of white flowered hyacinths. Each 15c; dozen \$1.50.

LA TOUR D'AUVERGNE.—A quick growing, early white variety, which is very popular because it blooms in advance of ordinary sorts and extends the length of the hyacinth season either in the house or in beds. Our bulbs are extra choice, first grade. Ea. 12c; doz. \$1.50.

WE OFFER A SPLENDID LIST OF THE BEST HYACINTHS TO CHOOSE FROM



FIRST GRADE BEDDING HYACINTHS.

BEDDING HYACINTHS

Choice Named Sorts in Separate Colors

Postage paid by us.

To those who do not wish to pay the highest price for best named Hyacinths, we especially recommend this grade for both house and garden culture. Though not so large as the named varieties, they are all choice, selected bulbs and will produce large, symmetrical trusses; especially fine for bedding.

SINGLE VARIETIES.

	Each	Per Doz.
Single Pure White	8c	\$0.80
Single Rose and Pink.....	8c	.80
Single Red	8c	.80
Single Light Blue	8c	.80
Single Dark Blue	8c	.80
Single Yellow	10c	1.00
Single all colors mixed.....	7c	.75

DOUBLE VARIETIES.

	Each	Per Doz.
Double Pure White	8c	\$0.80
Double Rose and Pink.....	8c	.80
Double Red	8c	.80
Double Light Blue	8c	.80
Double Dark Blue	8c	.80
Double Yellow	10c	1.00
Double all colors mixed.....	7c	.75

SECOND GRADE BULBS.

We can supply colors same as above of both double and single flowers in second size bulbs at 6c each or 60c per dozen, postpaid.

QUANTITY PRICES ON HYACINTHS

Customer to pay express charges.

You can save something on orders for two or more dozen hyacinths by having them go by express, provided you live within three hundred miles of Des Moines, and if your order calls for more than \$3.00 we advise ordering from this list. Small orders had better be made at prepaid prices.

NAMED SINGLE VARIETIES.

	Doz.	100.
Fabiola	\$1.25	\$10.00
Gertrude	1.00	8.00
Gigantea	1.00	8.00
Grandeur	1.00	8.00
Grand Maitre.....	1.25	10.00
Ida	1.25	10.00
King of the Blues.....	1.00	8.00
King of the Yellows.....	1.25	10.00
L'Innocence	1.25	10.00
L' or d'Australie.....	1.25	10.00
Moreno	1.00	8.00
Queen of the Blues.....	1.00	8.00

NAMED DOUBLE VARIETIES.

	Doz.	100.
Bloksberg	\$1.00	\$8.00
Bouquet Royal.....	1.00	8.00
Bouquet Tendre.....	1.00	8.00
Goethe	1.25	10.00
La Grandesse	1.25	10.00
La Tour d'Auvergne.....	1.00	8.00

SINGLE BEDDING SORTS TO COLOR.

	Doz.	100.
First quality pure white...	.60	\$4.50
First quality rose and pink...	.60	4.50
First quality red.....	.65	5.00
First quality light blue....	.55	4.00
First quality dark blue....	.60	4.50
First quality yellow.....	.65	5.00
First quality all colors mixed...	.50	4.00
Second quality pure white...	.50	3.50
Second quality rose and pink...	.50	3.50
Second quality red.....	.55	4.00
Second quality light blue....	.50	3.50
Second quality dark blue....	.50	3.50
Second quality yellow.....	.55	4.00
Sec'd quality all colors mixed...	.40	3.00

DOUBLE BEDDING SORTS TO COLOR.

	Doz.	100.
First quality pure white...	.60	\$4.50
First quality rose and pink...	.60	4.50
First quality red.....	.65	5.00
First quality light blue....	.55	4.00
First quality dark blue....	.60	4.50

	Doz.	100.
First quality yellow.....	.65	\$5.00
First quality all colors mixed...	.50	4.00
Second quality pure white...	.50	3.50
Second quality rose and pink...	.50	3.50
Second quality red.....	.55	4.00
Second quality light blue....	.50	3.50
Second quality dark blue....	.50	3.50
Second quality yellow.....	.55	4.00
Sec'd quality all colors mixed...	.40	3.00



FIRST GRADE NAMED HYACINTHS.

MINIATURE HYACINTHS

"DUTCH ROMANS"

These are the same in habit, form and color as our best named Dutch hyacinths described on page 4. They are offered by many houses as Dutch Romans, but they are true hyacinths in everything but size. The bulbs are about as large as white French Romans, being 12 to 15 centimetres in diameter, or half the size of our first grade named hyacinths. The blossoms are in keeping with the size of the bulbs and while the spikes will not be so large as the best named hyacinths, still the blossoms will be of perfect shape, fine in fragrance, and will delight the grower. Owing to the smaller sizes of the bulbs they may be planted like the French Romans, but if planted in beds out of doors should be set not farther than four inches apart. It requires just as long to mature these miniature hyacinths to blooming size as it does the larger ones, and when you consider that the grower has spent two or three years to bring them to perfect flowering size, you can readily see that a bargain is given in these bulbs. Miniature hyacinths are perfectly hardy and may be used for beds or borders if desired, but their most popular use is for house blooming during winter.

BLOKSBERG.—A double flower of bright porcelain blue. A lovely color and a fine blossom. Selected for its brightness as the most popular of the blue miniatures and will be a pleasing variation in the color scheme of your hyacinth collection. Each 6c; dozen 60c.

BOUQUET ROYAL.—Bright pleasing pink, a popular shade of color. Double flower, good spike and generally extra fine. Rivals the first grade bulbs in size and beauty of the bloom. Each 5c; dozen 50c.

BOUQUET TENDRE.—Double dark red. If double flowers are preferred this variety should be on your list. Everyone admires red in flowers of all kinds and this is the deepest shade we offer. Each 5c; dozen 50c.

GERTRUDE.—Single flowered deep pink or red. A lighter colored and brighter flower than the above and because single flowered hyacinths are generally preferred over the double ones this is the most popular variety of all the miniatures. Ea. 5c; doz. 50c.

GOETHE.—A light yellow double flower of good form and attractive appearance. Is considered the most dependable yellow sort, and therefore, the best for amateur growers. It bleaches lighter in the sun in open ground and hence is best planted indoors. Each 6c; dozen 60c.

GRANDEUR.—Single light pink or blush, growing a strong spike and a beautiful blossom of perfect form. A miniature Grandeur bulb will often produce as fine a flower, both in size and substance, as the larger first grade of other varieties. Each 5c; dozen 50c.



DEDUCT 10 Cts.
per dozen from the
prices of the Miniature
Hyacinths here quoted
if you want them to go
by express at your ex-
pense for transporta-
tion. Write for prices
by the hundred if want-
ed in quantity.

L'INNOCENCE.—Like its namesake in the large Dutch hyacinths this is the best single white flowered variety, and no other hyacinth except possibly the white French Romans, equals it in purity, fragrance and elegance. Ea. 6c; doz. 60c.

LA TOUR D'AUVERGNE.—A double white variety that produces fine spikes and lovely flowers. Our choice among the long list of double white sorts because of robust and healthy habit. Seldom fails to send up a perfect bloom. Each 5c; dozen 50c.

L'OR D'AUSTRALIE.—Single yellow. A good yellow hyacinth is a rarity, and among the miniatures this is counted the best one. So scarce are these that we have only a limited supply and we urge early orders if you want one of them. Each 6c; dozen 60c.

QUEEN OF THE BLUES.—A blue hyacinth of a fine, bright shade such as this one cannot fail to please every flower lover. It is single flowered, producing fine blooms, which, while not extra large, are peculiarly lovely in form and color. Each 5c; dozen 50c.



GERTRUDE HYACINTH.

MINIATURE HYACINTHS EITHER FOR INDOOR OR OUTDOOR PLANTING

ROMAN HYACINTHS

The bulbs here offered are the true French grown Roman hyacinths of first quality and grade. They are different from the Dutch hyacinths in that they are not hardy and are not used for outdoor planting. They bloom quickly, generally about 100 days from planting, though the time will vary with treatment given. Use good soil containing some sand if possible and plant a single bulb in a four-inch pot or four bulbs in a seven-inch pot. They generally produce from two to five spikes of flowers from each bulb and close planting will result in a most lovely pot of bloom, such as is shown in our illustration. They are pleasingly fragrant and the white ones are extremely dainty and beautiful. Millions of white Romans are grown by florists for the cut flower trade and they are one of the most popular of flowers because they lend themselves so readily to all classes of the florist's work. The indoor directions for growing the Dutch hyacinths may be followed with the Romans but they need not be kept so long in the dark. After potting allow them

to remain in a cool and dark place for about four weeks, bring them to the light but do not give too much heat until they begin to show flower stalks, after which they may be forced into flower quickly with heat and moisture. A single pan of Romans will scent a room and the fragrance is delightful. If you plant a number of these at one time in separate pans you can vary the time of flowering so as to have a succession of bloom simply by bringing them to the light at different times. Altogether the Roman hyacinth will be found a satisfactory bulb for indoor early winter blooming, and by using also the Dutch sorts you can have hyacinths in bloom in the house all winter long. Owing to the immense demand for Romans by the florists, prices have continued to advance for several years, until their cost is equal to the Dutch varieties, but we are making special low prices that our customers may have these flowers at small cost.

PURE WHITE.—The most popular of all. Every window should have several pots of these. The earliest of all, and may be had in bloom by December 1st if planted

early. September planting usually brings them in bloom for Christmas. Exquisite bells, white as the driven snow and very fragrant. Our bulbs are first size and never fail to bloom. Each 6c; dozen 60c; postpaid.

LIGHT BLUE.—Sky blue bell. Not quite so early as the white, should be planted ten days earlier if wanted in bloom at same time. A very pleasing flower because of dainty color and delicate fragrance. Blooms freely. Bulbs trifle larger than white but cheaper in price. Each 5c; doz. 50c; postpaid.

DELICATE ROSE.—A beautiful, clear rosy pink color. Rather bright and altogether lovely. This particular shade is a popular color and harmonizes beautifully with the other shades in Roman hyacinths. Not so early bloomer as the white, but about the same as the light blue described above. Each 5c; dozen 50c; postpaid.

CANARY YELLOW.—This is really a rich cream tint, rather than bright yellow, but the color is one that goes well with any of the others and helps to round out a fine quartet of blossoms. Blooms about the same time as the blue and rose. They are scarce and higher in price. Each 10c; doz. \$1.00;

price. Each 10c; doz. \$1.00;

THE FOUR ROMANS.

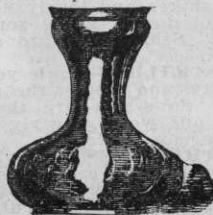
One choice bulb each of the four kinds named above. Postpaid for only 22 Cents.

ROMAN HYACINTHS.

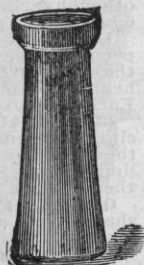
IF YOU WANT THEM BY EXPRESS with other bulbs you may deduct 10 cents per dozen from the prices on the different colored Romans quoted above. For prices by the hundred kindly write for quotations as market fluctuates.

HYACINTH GLASSES.

Permit only base of the bulb to rest in water. Delightful ornaments when hyacinth is in bloom. Amaryllis Formosissima and a few other bulbs may be grown in same way. Can only be sent by express at purchaser's expense. Ea. 20c.



TYE'S PLAIN.



TALL PLAIN.

DON'T OVERLOOK THE ROMAN HYACINTHS FOR WINTER BLOOMING

SINGLE EARLY TULIPS

A most gorgeous and satisfactory spring flower, and nothing is more showy on the lawn than a nice bed of Tulips, blooming, as they do, so early in the spring. Their ease of culture combined with beauty of form and gorgeous coloring, makes them the most popular bulbs for spring blooming, and for winter flowering in the greenhouse and window garden they are incomparable.

DIRECTIONS FOR PLANTING.

The soil for the tulip bed should be strong and rich, with sand sufficient to make it pliable. If the subsoil is clay or extra heavy it is best to take out the soil to a depth of eight inches and new soil should be made of compost outlined in the instructions for Hyacinths on page 4. The early varieties for massing or beds should be planted about 5 inches apart. The larger Darwin sorts should be planted about 6 inches apart in beds. Among the shrubbery or in borders they can be placed as desired. Set them at least 5 inches under the surface and after the ground freezes cover them with several inches of leaves or litter, allow to remain till all frost is out of the ground in spring.

It is not necessary that the tulip be protected but the covering helps to slower growth and our experience is that tulips bloom best and grow tallest and most robust when they grow slowly. Tulips can be grown in pots in the house, allowing a 4-inch pot for a single bulb or four bulbs may be planted in a 7-inch pan. In growing them indoors they should be kept in a cool dark place for three months after planting, so that they may

gain full root growth before top growth begins. A cave or root cellar which is kept at low temperature is best for this purpose and only a limited amount of water (just enough to keep the earth moist) should be given them until they are brought to the living rooms for blooming, after which time plenty of water and as much sun as possible should be given. If the flower begins to bloom prematurely, or before the stem is grown, place a paper cone over the bulb, leaving a hole about 2 inches in diameter at top of cone. This will tend to draw the flower up to the light and thus lengthen the stem.

Many planters use Snowdrops, Scillas or Crocus to plant between the Tulips in fall-planted beds, so that they may have earlier flowers than furnished by the Tulips and a longer display of blossoms in one bed. It is suggested also that early and late flowering Tulips planted alternately in a bed will furnish Tulips in bloom for fully thirty days in spring. Others set pansy plants between the Tulip bulbs and after frost cover the beds so that the pansies survive and come into bloom in spring just as the tulips are fading away.

Many prefer to destroy the Tulip bed as soon as the blooms have passed and set the bed to Geraniums or other summer bedding plants. No matter in what manner you choose to use the Tulip it will certainly give you abundant returns in flowers for the small sums invested.

- 
- No. 1—Belle Alliance.
 - No. 2—Yellow Prince.
 - No. 3—Cottage Maid.
 - No. 4—LaReine.

TRIAL COLLECTION OF SINGLE EARLY TULIPS

One Belle Alliance, One Yellow Prince, One Cottage Maid, One LaReine (White Queen), One Keiserskroon, Five fine bulbs, five different colors, postpaid for 15 cents.

FOUR COLLECTIONS FOR 50 CENTS POSTPAID.

SEE BACK COVER PAGE FOR SPLENDID OFFER OF EARLY TULIPS

SINGLE EARLY TULIPS



KEISKERKROON.

ARMS OF LEIDEN.—A dainty and beautiful flower of white, striped and slashed red. Grows about 9 inches high and blooms second early. Each 4c; dozen 40c; 100 for \$3.00.

ARTUS.—A splendid flower of dark scarlet. Not so bright in color as Belle Alliance but a richer shade. Height 9 inches, second early. Each 3c; dozen 30c; 100 for \$2.25.

BELLE ALLIANCE.—(See cut.)—The best, highest priced and most popular scarlet tulip. A brilliant blossom. Height nine inches, second early. Each 4c; dozen 45c; 100 for \$3.50.

COLEUR PONCEAU.—A lovely variety, color is rosy crimson tipped white, and is a very attractive combination. Blooms second early and about same height as Belle Alliance. Each 3c; dozen 30c; 100 for \$2.00.

COTTAGE MAID.—(See cut page 9.)—A beautiful and attractive flower which cannot be portrayed in black and white. It is bright pink suffused white in center of petals. Among the last to bloom of the early tulips and rather dwarf. A splendid sort for solid bed. Each 4c; dozen 40c; 100 for \$3.00.

CRAMOISIE BRILLIANT.—A lighter shade than Belle Alliance or Artus, being bright vermilion red. A flaming color especially attractive in borders or among herbaceous plantings or shrubbery. Beautiful for solid color effects. Second early, nine inches high. Each 4c; dozen 40c; 100 for \$3.00.

CRIMSON KING.—This is most showy as the flowers are large, of bright crimson color with sometimes a yellow base. A fine bedding variety. Blooms second early and grows rather dwarf, generally about eight inches high. A popular variety at a moderate price. Each 5c; dozen 30c; 100 for \$2.00.

CHRYSOLOREA.—Probably the best pure yellow second early tulip for bedding. Offers splendid contrast with Crimson King, blooming about the same time and growing about same height. Each 3c; dozen 30c; 100 for \$2.00.

DUCHESS OF PARMA.—A second early variety, growing nine or ten inches tall. Peculiarly attractive flower of orange yellow, shading to terra cotta, with fiery yellow and brown markings; the whole making a composite flower of great beauty. Will be specially attractive as an indoor bloomer. Each 3c; dozen 30c; 100 for \$2.00.

KEISKERKROON.—(See cut.)—Probably the most popular variety for bedding. Flower is bright red, with broad yellow tip, a contrast so bright as to instantly attract attention. Grows tall, blooms medium early and is of strong, robust habit. Desirable for shrubbery or border planting as the bright colors brighten whatever situation it occupies. Owing to immense demand prices are high, yet we have placed it on a level in price with other and cheaper sorts. Bulbs are large and heavy. Each 4c; dozen 40c; 100 for \$3.00.

LA REINE.—(See cut page 9.)—The best white, second early variety, growing nine inches high. More of these are forced than any other sort and they are produced in immense numbers by the Holland growers. They make a splendid sort to contrast with Crimson King or Belle Alliance. Each 3c; dozen 30c; 100 for \$2.00.

POTTEBAKKER WHITE.—The Pottelbakker tulips are a class of tall-growing, early-blooming bulbs which are very desirable for bedding. We offer three shades of color which give the planter opportunity for either solid or mixed colored beds as preferred. The Pottelbakkers are very popular because of large flowers and long stems, making them desirable for cutting. Grown successfully either in the house or garden. Each 4c; dozen 40c; 100 for \$3.00.

POTTEBAKKER YELLOW.—Like the white-flowered sort except color is pure golden yellow. Each 3c; dozen 30c; 100 for \$2.00.

POTTEBAKKER SCARLET.—A bright scarlet flower for contrasting with the yellow and white varieties. Each 3c; dozen 30c; 100 for \$2.00.

ROSE GRIS-DE-LIN.—Similar to Cottage Maid in tints, but a little brighter in color. It is earlier and more dwarf than that variety, blooming at not over 6 inches high. Popular in Europe because of this habit. Not suitable to grow with other sorts in our list but splendid as a single bedder. Each 3c; dozen 30c; 100 for \$2.00.

YELLOW PRINCE.—(See cut page 9.)—The most popular yellow variety for forcing and indoor growing. They grow tall and the shape of the flower is ideal. Planted outdoors it blooms second early and as it ages the flower deepens in shade. Quite fragrant. Each 3c; dozen 30c; 100 for \$2.00.



CRIMSON KING.

A GOOD RANGE OF COLORS IS OFFERED IN SINGLE TULIPS

SEE BACK COVER PAGE FOR SPLENDID OFFER OF EARLY TULIPS

SPECIAL MIXTURES OF EARLY TULIPS

We offer two grades of tulips in mixtures of all colors. Our first grade or "Best" are mixed by ourselves. To make this mixture we buy large quantities of the best named varieties and take equal numbers of each to secure the widest range of color from the best and most perfect bulbs. We are careful to select varieties that grow to similar height and bloom about the same. Where a wide range of types and colors are wanted we recommend our "Fine" mixed grade, which are grown for us in Holland. These are really second size bulbs, but the mixture contains many varieties and types, which we do not list separately and the difference in size is so slight that it is not discernible. When you consider that we pay the postage at the prices here named you can readily see that real bargains are offered in both our "Best" and "Fine" mixed tulips.

Fine Mixed Single Tulips —Per dozen 25c; 100 for \$1.50.
Fine Mixed Double Tulips —Per dozen 25c; 100 for \$1.50.
Best Mixed Single Tulips —Per dozen 35c; 100 for \$2.50.
Best Mixed Double Tulips —Per dozen 35c; 100 for \$2.50.

EARLY FLOWERING DOUBLE TULIPS

These are not so popular for bedding as the single flowered sorts but the individual flowers are striking in form, size and color, and are greatly liked for vases and interior decoration. Grown in borders or in clumps among shrubbery they are really fine. We only list a half dozen named varieties but they are the best in each division and we give you a very nice diversity of color. The bulbs we offer are carefully selected and are the best obtainable. They are large, strong and well matured, and will produce splendid flowers.

LA CANDEUR.—Pure white. Flowers are extra large and full and are splendid in size and lasting qualities. Popular for bedding, furnishing a beautiful contrast in masses when used with bright colored sorts. Each 4c; doz. 35c; 100 for \$2.75.

MURILLO.—(Albino)—Blush white, shaded rose. One of the daintiest of tulips and one of the most popular varieties. A favorite with florists for greenhouse production. There is hardly enough color in it to use alone for bedding, but it will work in nicely with the brighter colored sorts. Each 4c; dozen 35c; 100 for \$2.75.

DUKE OF YORK.—A very fine, showy variety. Color is bright carmine rose, edged broadly with white and there is contrast sufficient to make a largely variegated bed if planted alone. Bulbs are not so large as the varieties above but are sound and solid and will produce fine flowers. Each 4c; dozen 35c; 100 for \$2.50.

TITIAN.—A composite red and yellow flower of great beauty and contrast. Medium early. Ea. 4c; doz. 40c; 100 \$3.

TOURNESOL.—A striking flower of orange scarlet with broad yellow tips and yellow base. The most brilliant contrasting shades and will attract attention in any planting or collection. Needs no other kind to make contrast. Each 5c; dozen 50c; 100 for \$3.75.

LA CITADELLE.—A fine contrasting flower of purplish red with yellow border. Not so bright or striking as Tournesol but a beautiful composite flower which will be popular for solid beds. Each 4c; dozen 40c; 100 for \$3.00.

REX RUBRORUM.—A bright double scarlet. Just the one to make a brilliant bed of color by itself or splendid for planting in centers or outer edgings among lighter colored flowers. Goes best with La Candeur as it grows about the same height and blooms at same time. Each 4c; doz. 40c; 100 for \$3.00.

TRIAL COLLECTION DOUBLE TULIPS

One La Candeur, One Murillo, One Duke of York, One Tournesol, One La Citadelle, One Rex Rubrorum—Six fine bulbs, all different, postpaid, 18c.

Four Collections, Only 65c Postpaid.



No. 1—La Citadelle.

No. 2—Murillo.

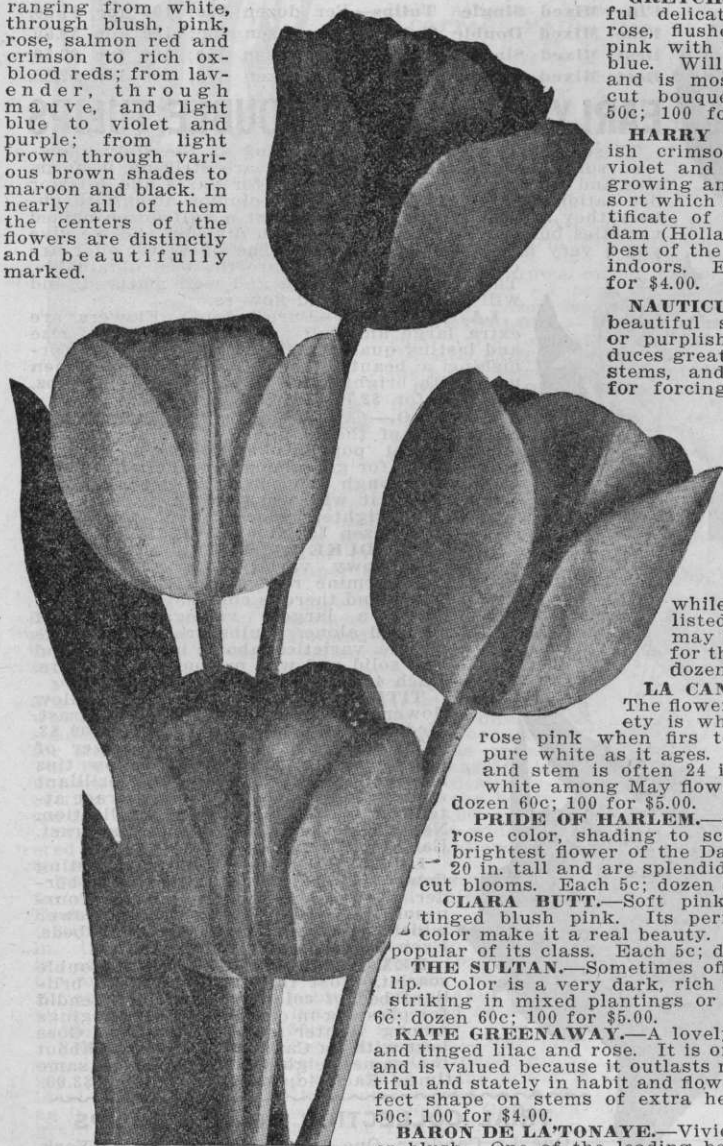
No. 3—La Candeur.

No. 4—Rex Rubrorum.

WE LIST ONLY THE CHOICEST VARIETIES OF DOUBLE TULIPS

DARWIN TULIPS

These originated as seedlings of some of the Bybloom tulips in the North of France, were adopted by Holland planters and named "Darwin" after the great naturalist of that name. They are unusual among tulips for the clear colors, substance and lasting quality of the blooms, and the strong, robust growth of the entire plant. They come into bloom in May, if planted outdoors, and by keeping them covered until all the frost is out of the ground they may be had in bloom as late as June 1st, especially if planted in shaded situations or among shrubbery and herbaceous borders. Grown indoors they may be bloomed in March and are splendid for this purpose if kept cool and only allowed to grow slowly. The flowers are models of form, and cover a great variety of both dainty and richly brilliant coloring, ranging from white, through bluish, pink, rose, salmon red and crimson to rich ox-blood reds; from lavender, through mauve, and light blue to violet and purple; from light brown through various brown shades to maroon and black. In nearly all of them the centers of the flowers are distinctly and beautifully marked.



MIXED DARWIN TULIPS.—A mixture affording a good range of colors and varieties at a low price. Each 4c; dozen 40c; 100 for \$3.00.

GRETCHEN.—A very beautiful delicate flower of silvery rose, flushed white; inside soft pink with white center marked blue. Will grow 24 inches high and is most lovely in vases as cut bouquets. Each 5c; dozen 50c; 100 for \$4.00.

HARRY VEITCH.—A brownish crimson flower with large violet and white center. A tall growing and strikingly beautiful sort which has been awarded certificate of merit at the Amsterdam (Holland) shows. One of the best of the Darwins for growing indoors. Each 5c; doz. 50c; 100 for \$4.00.

NAUTICUS.—This dainty and beautiful sort is bright cerise or purplish rose color and produces great large flowers on long stems, and is one of the best for forcing. Listed by Holland growers as one of their choicest varieties. Each 6c; doz. 60c; 100 for \$5.00.

HENRY HUDSON.—Flowers of medium size pointed form, and orange scarlet in color. Not so large as the last two sorts above but satisfactory in size and while not a true Darwin it is listed here that our friends may have a shade of yellow for their gardens. Each 5c; dozen 50c; 100 for \$4.00.

LA CANDEUR.—(Darwin)—The flower of this splendid variety is white, flushed with soft rose pink when first opening, bleaching to pure white as it ages. Blossom is very large and stem is often 24 inches high. The best white among May flowering tulips. Each 6c; dozen 60c; 100 for \$5.00.

PRIDE OF HARLEM.—One of the best. Deep rose color, shading to scarlet and offering the brightest flower of the Darwin list. Grow 18 to 20 in. tall and are splendid in borders, beds or as cut blooms. Each 5c; dozen 50c; 100 for \$4.00.

CLARA BUTT.—Soft pink, shaded salmon and tinged bluish pink. Its perfect shape and lovely color make it a real beauty. Undoubtedly the most popular of its class. Each 5c; dozen 60c; 100 for \$5.00.

THE SULTAN.—Sometimes offered as the Black Tulip. Color is a very dark, rich maroon and it is most striking in mixed plantings or in cut bouquets. Each 6c; dozen 60c; 100 for \$5.00.

KATE GREENAWAY.—A lovely white flower, striped and tinged lilac and rose. It is one of the last to bloom and is valued because it outlasts most sorts and is beautiful and stately in habit and flower. Blooms are of perfect shape on stems of extra height. Each 5c; dozen 50c; 100 for \$4.00.

BARON DE LA'TONAYE.—Vivid pink, margined lighter bluish. One of the leading bedders of the Darwins. The flowers are large, well formed and keep their brightness to the last. The stems are very tall and strong, holding the flowers perfectly upright. Each 5c; dozen 50c; 100 for \$4.00.

YOU CAN GET SPLENDID RESULTS FROM THIS LIST OF DARWINS

TULIPS:--Late or May Flowering

Late Tulips are specially valuable, blooming from middle of May till after Decoration Day. Taller than the early varieties; their long, graceful stem and beautifully-formed blossoms place them among our most highly prized spring flowers; keep a long time after being cut.

PARROT TULIPS

These are late flowering tulips of striking and fantastic forms. Flowers are large and the illustration gives but a general idea of the odd, yet beautiful form of the blossoms. They bloom during May usually and can be had in full bloom on Memorial Day by keeping them covered late in spring. We offer in these a splendid mixture of colors which will produce striking and showy effects. A bed of these in bloom is truly beautiful and every garden should have them. Each 3c; doz. 30c; 100 for \$2.00.

BYBLOOM TULIPS

Large, late May-flowering Tulips; extra large flowers on tall stems. The ground coloring of these is white with stripes, blotches and markings of crimson, pink, scarlet, rose, violet, lilac and shades of blue. Striking and effective for late flowers and especially fine for cut flowers because of contrasting colors. Mixed colors, each 3c; per doz. 30c; per 100 \$2.00.

BIZARRE TULIPS

Similar in habit and manner of growth to the Byblooms, but the ground color of the flowers is yellow. Harmonize finely with the above and are even more striking in appearance and brighter in coloring. Each 3c; per doz. 30c; per 100 \$2.00.

COTTAGE GARDEN TULIPS

The most popular strain of Tulips at the present because they are perfectly hardy and can be planted among hardy herbaceous beds and borders where they may be allowed to remain without being disturbed for a number of years.

They present all the shades and markings found in the other classes of Tulips; are late flowering and will certainly prove satisfactory.

SCARLET MIXED.—Shades of red and varieties suitable for growing together. Each 4c; doz. 35c; 100 for \$2.50.

YELLOW MIXED.—Not all clear yellow, but many show fine markings. Each 3c; doz. 30c; 100 for \$2.00.

PINK MIXED.—A mixture of pink shades and composite flowers with pink markings. Each 4c; doz. 35c; 100 \$2.50.

ALL COLORS MIXED.—Containing all the above colors and a wide range of both solid and variegated colors. Each 4c; doz. 35c; 100 for \$2.50.

MAY-FLOWERING MIXED TULIPS

These mixtures contain Darwins, Byblooms, Bizarres, Cottage Garden, Parrots and many other types of late blooming tulips and are recommended for borders among shrubbery or for planting among hardy perennials for permanent beds. They will be interesting and attractive because of the wide diversity of types and variety of colors.

SINGLE LATE MIXED.—Generally the most popular but both these and the double mixed will give satisfaction where a mixture is desired. Each 3c; doz. 30c; 100 for \$2.00.

DOUBLE LATE MIXED.—If the widest possible range of type and color is desired purchase both double and single late mixed in quantity. Each 4c; doz. 35c; 100 for \$2.50.

CEMETERY COLLECTION OF TULIPS.

This collection is offered to such of our customers who would like to have a fine show of lovely flowers on the cemetery lot at Memorial Day. Just enough for a small bed planted closely.

6 Giant Darwin, 12 Byblooms, 12 Bizarres, 12 Parrot Tulips, postpaid for \$1.00.

MEMORIAL DAY TULIP BED.

One dozen Giant Darwin Tulips for the center; two dozen Byblooms and two dozen Bizarres for the center, and one hundred Parrot Tulips for the outer rows. 160 bulbs that in ordinary seasons will be in full bloom on Memorial Day, with a splendid show of color. Postpaid for only \$3.00.

READ THIS PAGE CAREFULLY. THERE ARE DELIGHTFUL TULIPS OFFERED



SPECIAL OFFERS BEDDING TULIPS

ALL BULBS QUOTED ON THIS PAGE GO BY EXPRESS AT CUSTOMERS'
COST FOR TRANSPORTATION

It requires quite a large number of tulip bulbs to make much of a bed and if you intend to plant liberally you will find it advantageous to buy from this page, since the postage rate at 8 cents per lb. is much higher than express charges unless you live a long distance from Des Moines. It will not be possible to save you very much except you buy a hundred bulbs or more. An ordinary round bed, 5 feet in diameter, should need 200 bulbs; 5½ feet diameter would require 250 bulbs, and 6 feet diameter should have 300 bulbs, to plant it properly. A square or oblong bed can be estimated by allowing ten bulbs for each square foot of space and six to eight bulbs per square foot will be about right for ribbon beds or borders. These estimates are for solid beds where lots of color is wanted and is based on planting closely together (4 inches); but if looser planting will answer they may be planted 5 inches apart, which will reduce the estimates above about one-fourth. The selection of colors and the design of the bed is a matter of individual taste. Personally we recommend beds of one variety or color as frequently the different varieties in a bed will bloom at different times, or grow to different height, so that the effect is not so pronounced as hoped for. A solid bed of any of our named varieties will be sure to please, while good results may be had from our unnamed colors. For borders, or in shrubbery, a mixture may be used to good advantage since the effect sought is different from that of a formal bed.

NOTE.—Fifty bulbs of any one kind will be sold at hundred rates. You can select 25 of any one kind at the hundred rate provided your order amounts to a total of 100 bulbs.

BEST NAMED VARIETIES

For description see previous page.
SINGLE FLOWERED.

	Per 100
Arms of Leyden.....	\$2.50
Artus	1.75
Belle Alliance.....	2.50
Chrysolora	1.75
Coleur Ponceau.....	1.75
Cottage Maid.....	2.50
Cramoisie Brilliant.....	2.50
Crimson King.....	1.75
Duchess of Parma.....	1.75
Keiserskroon	2.50
LaReine	1.75
Pottebakker White.....	2.50
Pottebakker Yellow.....	2.25
Pottebakker Scarlet.....	2.25
Rose Gris-de-Lin.....	1.75
Yellow Prince.....	1.75
Best mixed from named single sorts..	2.00

DOUBLE FLOWERED

	Per 100
Duke of York.....	\$2.00
La Candeur.....	2.50
La Citadelle.....	2.50
Murillo	2.50
Rex Rubrorum.....	3.00
Titian	3.00
Tournesol	3.00
Best mixed from named double sorts..	2.00

UNNAMED SORTS TO COLOR

Good stock at very low prices.
SINGLE FLOWERED.

	Per 100
Single White.....	\$1.50
Rose Pink.....	1.40
Scarlet	1.35
Yellow	1.35
Orange	1.40
Red and Yellow.....	1.50
Single Fine Mixed, all colors.....	1.25
Singles Best Mixed, all colors.....	2.00

DOUBLE FLOWERED.

	Per 100
Double White.....	2.00
Rose Pink.....	1.85
Scarlet	1.75
Yellow	1.75
Orange	1.85
Red and Yellow.....	1.85
Double Fine Mixed.....	1.25
Double Best Mixed.....	2.00

LATE BEDDING TULIPS.

	Per 100
Darwins Mixed.....	\$2.25
Cottage Garden Mixed.....	2.00
Byblooms Mixed.....	1.75
Bizarres Mixed.....	1.75
Parrots Mixed.....	1.75
Single Late Tulips, all colors mixed..	1.75
Double Late Tulips, all colors mixed..	2.00

IF YOU WANT A TULIP BED, HERE IS A SPLENDID OFFER

NARCISSUS, OR DAFFODILS

The narcissus listed on this page are hardy sorts suitable for outdoor growing and can also be used for indoor planting. They can be grown with success in permanent plantings and will continue to flower year after year without attention. Are recommended by the foremost authorities for ornamental plantings in borders or shaded situations and give delightful effects in woodland landscapes.

INCOMPARABLE DOUBLE.—(Butter and Eggs).—Full double of rich yellow and orange. Very rich colors and grand variety for growing in the house or outdoors. Each 4c; dozen 40c; 100 for \$3.00.

DOUBLE VON SION.—The first of the list in popularity. It is the true Daffodil, of beautiful golden yellow color which is so highly prized by lovers of spring flowers.

Double Nosed Bulbs.—Mammoth bulbs (larger than a hyacinth) which will produce two or more flower stalks; solid and heavy. Each 6c; dozen 60c; 100 for \$4.00.

First Size Bulbs.—The ordinary first grade containing many double nosed bulbs, are large and strong and will give satisfaction. Each 4c; dozen 40c; 100 for \$3.00.

Second Size Bulbs.—A good grade, not so large or strong as the above, but satisfactory for outdoor planting. Each 3c; dozen 30c; 100, \$2.25.

EMPEROR.—Extra large flowers, both trumpet and petals yellow. Tall and fine. Bulbs very large, strong and solid. The most splendid of single yellow Narcissus for indoor growing. Each 6c; dozen 60c; 100 for \$4.25.

EMPRESS.—Extra large flowers, trumpet yellow, petals white. Fit companion for the Emperor with all its stateliness and beauty. Each 6c; doz. 60c; 100 for \$4.25.

GOLDEN SPUR.—Similar to Emperor in color and habit, but more free flowering. The variety most used by florists for winter forcing. Will often produce three to five flowers from each bulb. Each 5c; dozen 50c; 100 for \$3.50.

TRUMPET MAJOR.—Single yellow trumpet, yellow petals. A splendid low priced Narcissus for either forcing or outdoors. Each 3c; dozen 30c; 100 for \$2.50.

PRINCEPS.—Single yellow trumpet with sulphur petals. Desirable for house or field. Ea. 3c; doz. 30c; 100, \$2.50.

BULBOCODIUM.—(Hoop Petticoat).—A dwarf; very free bloomer, producing six to twelve large, rich golden yellow, trumpet-shaped flowers. Hardy. Used for borders and first rows in mass planting. Each 5c; dozen 50c; 100 for \$3.50.

ALBA PLENO ODORATA.—(Double Poeticus).—Each 3c; dozen 30c; 100 for \$2.00.

POETICUS.—("The Pheasant's Eye" or "Poet's Narcissus.")—Pure white flowers with orange cup edged with crimson; splendid flower. Hardy and fine for garden planting. A beautiful and popular variety, specially desirable for landscape painting. Ea. 3c; doz. 25c; 100 for \$1.50.

POETICUS ORNATUS.—Similar to above but cup is a shade lighter color, and this variety blooms somewhat earlier. Is preferred to the above for indoor planting. Each 3c; dozen 30c; 100 for \$2.00.

JONQUILS.—Belong to the Narcissus family, and are treated in the same manner. Quite hardy. Produce large, golden and deliciously fragrant flowers. For indoor, two or three bulbs should be put in a 4-inch pot. Fine for planting with larger flowered Narcissus in landscape or border. Ea. 3c; doz. 30c; 100, \$2.25.

THESE NARCISSUS CAN BE GROWN EITHER IN OR OUT OF DOORS

EMPEROR
AND
EMPRESS
NARCISSUS



POLYANTHUS NARCISSUS

This class of Narcissus is not hardy in the north and we only list the one variety which is most suitable for indoor growing. Thousands of the Paper White variety are grown in greenhouses for the Christmas and winter trade in cut flowers. It is claimed that this type of Narcissus may be grown outdoors with winter protection but we prefer to recommend them only for indoor culture. They are desirable because they are easy to grow and bloom quickly. They make the best specimens if two or three bulbs are planted in a six or seven inch pot, but do nicely if planted singly in a four inch pot or may be forced in water in a hyacinth glass.

PAPER WHITE GRANDIFLORA.—This beautiful, graceful variety can be made to bloom in December. There is no more satisfactory bulb for house cultivation; its clusters of snow-white flowers are deliciously fragrant. They are perhaps more largely forced for cutting than any other narcissus, tons of them being used for the large flower markets of the world. Remember we pay the postage at the prices here quoted and as the bulbs are large and heavy this is quite an item of saving in cost to you.

Mammoth Bulbs.—Larger than hyacinths, exceptionally solid and heavy. Sure to give satisfaction. Each 6c; dozen 60c; 100 for \$4.

First Size Bulbs.—Such as are usually grown by florists and amateurs; of satisfactory size and quality. Each 5c; dozen 40c; 100 for \$3.00.



PAPER WHITE GRANDIFLORA NARCISSUS.

CHINESE SACRED LILY

This is now the most popular of all bulbs for winter blooming because it is generally of the easiest culture. It is a variety of Polyanthus Narcissus grown by the Chinese



CHINESE SACRED LILY.

to decorate their sacred temples or Joss Houses on their New Year's Day, which occurs in February. They produce a profusion of bloom in a short time, usually not more than four to six weeks from time of planting. The foliage is luxuriant and of a dark green color, surmounted by a wealth of large, satiny white, fragrant flowers with golden yellow cup.

CULTURE.—Being partly aquatic, this plant must have plenty of water. If grown in soil, make it light and sandy, but they are usually grown in vases or dishes of water. Put an inch of gravel in the dish, set the bulbs on this and put gravel around them to keep from falling over; fill dish with water and set in a dark closet for several days until the roots start freely; then bring to light and keep in any ordinary living room. A dozen bulbs started in this way at intervals will give a succession of bloom all winter. The bulbs offered by us are large, solid, and well matured. They can be relied upon to be the true Chinese, and not inferior Bermuda grown stock. Price 15 cents each; \$1.40 per dozen, postpaid; not postpaid, each 10 cents, dozen \$1.00.

SURPLUS BULB COLLECTION

\$1.50 FOR \$1.00

It is impossible for us to know just how many of any certain kind of bulbs will be required to fill our orders. We must purchase by estimate, and it always happens that we get too few of some things and too many of others. To dispose of surplus bulbs, we will send after October 1st bulbs to catalogue value of \$1.50 for \$1.00. The only reservation is that we select the bulbs sent. We can not promise in advance just what will be sent, but will guarantee to send more value for your money than you can get in any other way.

THE SURPLUS BULB COLLECTION OFFERED HERE WILL BE A SURPRISE TO YOU

EARLY SPRING FLOWERING CROCUS

This is one of the first flowers that peep through the snow to announce the approach of spring. It should occupy a prominent place in your outdoor plantings. They are extremely lovely, planted in massed beds, and a beautiful and striking bed can be made by massing the yellow, purple and white shades. Mixed and variegated flowers are desirable for group plantings or for scattering through the lawn or in herbaceous borders. The named varieties are effective in pots, but they are only to be planted in this manner if they may be kept in a cool place until midwinter. They will not do well in heated rooms. The bulbs range in size from 1 to 2 inches in diameter and are easily planted in sod or borders with a dibber. As they flower very early they are out of the way before the lawn needs mowing in spring and before the ordinary herbaceous flowers have grown very large. Plant three inches deep and for massing

about two inches apart. Half a dozen bulbs may be planted in a 5-inch pot. Plant during October or November and keep bulbs in a cool dry place until ready to use them. Our bulbs are strong and of select quality and will give results with but little labor or expense.

MIXED WHITE.—These will not be all pure white but there will be only a small proportion of color in any one flower, so that the general effect in mass or single planting will be white. Per dozen 15c; 100 for \$1.00; 1,000 for \$8.00.

MIXED YELLOW.—Not so large as Mammoth Yellow listed below, but satisfactory for ordinary planting both as to size of bulb and flower. Useful for quantity planting because of low price. Dozen 15c; 100 for \$1.00; 1,000, \$8.

MIXED STRIPED AND VARI-GATED.—These will not only be attractive in contrast with other shades but there is so great variation in the mixture that it will make a splendid bed if only this mixture is used. Per dozen 15c; 100 for \$1.00; 1,000 for \$8.00.

MIXED PURPLE AND BLUE.—Beautiful shades and markings, suitable for any planting, but especially effective in masses. Favorites because of unusual colors. Dozen 15c; 100, \$1; 1,000, \$8.

ALL COLORS MIXED.—A good mixture containing the different shades of color found in crocus. Dozen 10c; 100, 80c; 1,000, \$6.00.

CLOTH OF GOLD.—A very fine flower of yellow veined and striped with brown, making an attractive and pleasing contrast. Will be noticed in a bed of mixed colors by its oddity. We offer fine, strong bulbs which will produce strong

flowers. Per doz., 20c; 100 for \$1.25.

CLOTH OF SILVER.—The ground color of flower is silvery white, with veinings of light blue. A dainty blossom and a popular variety. This and Cloth of Gold make a nice show planted either alternately for color or massed each variety as a part

of the bed. Doz., 20c; 100 for \$1.25.

MAMMOTH YELLOW.—The largest yellow flowered variety and the largest bulbs. The color is bright, golden yellow and will be striking in any situation. Desirable for every kind of planting and will be especially attractive on the lawn. Doz. 20c; 100, \$1.25.

PRESIDENT LINCOLN.—A handsome deep purple flower and one of the largest varieties. Splendid for contrast massing with white or yellow sorts. Choice bulbs of good size, grown specially for us. Per dozen 20c; 100 for \$1.25.

SIR WALTER SCOTT.—A dainty and beautiful flower of white groundwork, striped and veined with enough color to make a pleasing contrast and

light purple. Planted in a solid bed there is enough color to make a pleasing contrast and it goes well in masses of purple or yellow sorts. Per dozen 20c; 100 for \$1.25.

MONT BLANC.—A fine large, pure white flower. Recommended as the best of the white varieties. Useful in mass planting or for mixed beds. Shows nicely on the lawn or in borders. Per dozen 20c; 100 for \$1.25.

YOU CANNOT AFFORD TO OVERLOOK CROCUS IN YOUR PLANTING



- Nos.
1. Cloth of Silver
2. Sir Walter Scott.
3. Mont Blanc.
4. Mammoth Yellow.
5. President Lincoln.



ANEMONES.

and will keep two weeks in water after cutting. If planted early can be forced to bloom by Christmas. Six or eight bulbs should be planted in 4-inch pot. Not hardy. First size bulbs, each 5c; dozen 45c. Second size, each 3c; dozen 25c.

PURITY.—A splendid new pure white sort of this beautiful flower. Absolute purity of color, extra large flowers and splendid perfume make it very desirable. Each 6c; dozen 50c.

ANEMONES

These beautiful flowers are adapted for garden or pot culture. In the garden, plant in spring in any good, rich garden soil, five or six inches apart, in clumps or masses. For house culture, three or four bulbs any time of year. The dry bulbs will keep indefinitely if kept warm. Keep moderately cool and give little water till plants appear. Single Mixed, each 5c; dozen 40c; Double Mixed, each 5c; doz. 40c.

ALLIUM

Dainty white star-shaped flowers; of easiest culture, either out doors or in the house. Dozen 20c; 100 for \$1.25.

FREESIA

REFRACTA ALBA.—One of the daintiest of flowers for conservatory or window garden is well shown below. Color white with yellow blotched throat; quite fragrant; a free bloomer



IXIAS

The Ixia is a beautiful little winter-flowering bulb with long, slender, graceful spikes of bloom. The colors are rich, varied and beautiful, the center always differing in color from the other parts of the flower, so that the blossoms, expanding in the sun's rays, present a picture of gorgeous are rich, varied and beautiful. Our illustration does not do this flower justice. Mixed colors, 20c per dozen, \$1.25 per 100.

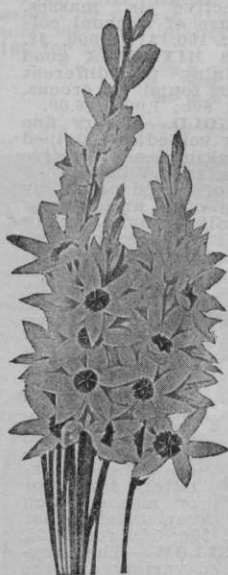
ORNITHOGALUM ARABICUM

Commonly Known as Giant Flowered Star of Bethlehem.

A showy and beautiful flower, sweetly odorous. Blossoms of pure white with a black center, borne on stems one to two feet high; succeeds either outdoors or in pots. Fine for forcing and largely used by commercial florists for this purpose. Easily cultivated. Plant a single bulb in a 4-inch pot or 3 bulbs in a 7-inch pan. Each 10c; dozen 90c.



ORNATHOGALUM ARABICUM.



IXIAS.

SCILLA

SIBERICA.—Comes into bloom with the Crocus and Snowdrop. A beautiful, rich blue, bell-shaped flower, borne on graceful spikes; very showy and attractive pot plant; treat same as Hyacinth. Each 40c; dozen 35c.

SNOWDROP

This is one of the daintiest of early spring flowers—the advance agent of April showers and summer suns. Very desirable to plant with Crocus and Scilla. The small bulbs should be planted in clusters of ten or twelve to secure best effect. Single doz. 15c; 100 for \$1.15, postpaid. Double, dozen 25c; 100 for \$1.75, postpaid.



SNOWDROPS.

FREESIA AND STAR OF BETHLEHEM ARE DELIGHTFUL PLANTS FOR INDOORS

**CINNAMON VINE**

A beautiful climber possessing the rare quality of emitting from its flowers the delightful odor of cinnamon. Perfectly hardy, the stem dying down in autumn, but growing again so rapidly as to completely cover trellis or arbor very early in the season; most desirable climber. We furnish the large tubers, postpaid, for 10 cents; 3 for 25c; doz. 65c.

GLADIOLUS

The varieties here named can be planted in the fall in pots in the house for winter flowers and are very graceful and of great beauty. Delivery not promised before December 1st.

PEACH BLOW.

Resembling Blushing Bride, but the ground work is salmon pink, while markings are more distinctive. Each, 4c; dozen, 30c; 100 for \$2.00.

BRIDE.—A lovely pure white flower, softly fringed and showing soft pink markings on petals; of the most graceful habit. Blossoms all open at once, making an ideal cut flower. Ea. 3c; doz. 35c; 100 \$1.50.

BLUSHING BRIDE.—This beautiful sort is like the above in all but ground color, which is delicate pink relieved with spots of brilliant carmine red. Each 4c; dozen 30c; 100 for \$2.00.

MIXED.—Winter flowering varieties in different shades and markings. Each, 3c; doz., 25c; 100 for \$1.50.

TUBEROSE

EXCELSIOR PEARL.—Spikes often bear 30 to 50 flowers, remaining in bloom for a long time. Always wax-like, pure white and unsurpassed for buttonhole bouquets. Not hardy. They can be grown in a warm room during the winter; but they are usually started in the spring. Delivery not promised before Dec. 15. Mammoth bulbs each 6c; doz. 60c. Choice large bulbs, postpaid, each 5c; doz. 40c; smaller bulbs 20c per dozen, \$1.00 per 100, postpaid.

AMARYLLIS

FORMOSSISSIMA.—(Jacobean Lily).—A quaintly shaped beautiful flower of a grand dark scarlet; blooms freely; forces well and can be grown in water like the Hyacinth; if the bulbs are kept dry during winter, they can be planted in the open ground in the spring, and will flower during the summer. Not hardy, but the rare beauty of the flower well repays the care given. Ea. 15c; doz. \$1.50.

JOHNSONI.—(Bermuda Spice Lily).—A very popular variety, wine red, with a white stripe down each petal; an early and abundant bloomer and a specially robust grower. Not hardy. Bulbs 50c each.

ATAMASCO.—Pretty pink and white flowers. Bulbs 5c each; 50c dozen.



BLUSHING BRIDE GLADIOLUS.

**OXALIS**

DOUBLE YELLOW.—This new variety is well shown in engraving and makes a most attractive plant for hanging baskets, vases, etc. Several bulbs planted together will make a grand showing. Not hardy. Each 5c; dozen 45c.

BERMUDA BUTTERCUP.

Fifty flower spikes have been produced by a well-grown plant and as many as 1,000 flowers in a season. Cultivation is easiest possible; everyone is sure to succeed with it. Not hardy. Each 5c; doz. 45c.

BOWIEL.

Profuse bloomer; flowers brilliant carmine rose. Each 4c; dozen 35c.

GOLDEN STAR.

(Ortgiesi).—A shrubby plant, about 12 inches in height, loaded with clusters of golden star-shaped flowers. Each 15c.



EXCELSIOR PEARL TUBEROSE.

WINTER BLOOMING GLADIOLUS ARE LOVELY FLOWERS OF EXQUISITE COLORS

BEAUTIFUL LILIES

Nothing can surpass the Lily in beauty, purity and stately grandeur. They thrive best in well-drained, loamy soil, made rich with thoroughly-rotted cow manure, and about an inch of sand should be placed under and over the bulbs when setting. Plant in the fall when possible, as they give much better satisfaction. The *Harrisi* is planted in pots for blooming at Easter; the other varieties are all hardy. Delivery of hardy garden lilies not promised before Nov. 1.

HARRISI—(The Bermuda Easter Lily).—This magnificent Lily is the best of all varieties for winter forcing; the mammoth trumpet-shaped flowers four to six inches in length, are pure waxy white and delicately fragrant. After potting, it should be kept in a cool dark place until a strong root growth is secured. Use a 5-in. pot for each bulb. Very beautiful and expressive. Ea. 15c; 3 for 40c; dozen \$1.45.

LONGIFLORUM—(Easter Lily).—This mammoth white trumpet lily, with flowers 4 to 5 inches long, is one of the best lilies for winter blooming, because its grand trumpet-shaped flowers which give forth a delicate perfume, are wonderfully beautiful and expressive. When planted in the open ground they should be protected during the winter. Manage like *Harrisi* for indoor blooming. Ea. 20c; 3, 50c.

AURATUM—(Japanese Gold Banded Lily).—This is justly entitled to the name often given it—The Queen of Lilies. The immense flowers are produced in great profusion and are deliciously fragrant. The large white petals are thickly spotted with rich chocolate crimson, and have a bright golden yellow band through the center. Each 20c; dozen \$1.75; mammoth bulbs, each 30c, dozen \$2.75.

SPECIOSUM ALBUM.—Has large white flowers of great substance, and beautifully recurved. Each 20c; 3 for 50c.

THUNBERGIANUM.—Red and orange. Grows clean and thrifty and will please. Each 15c; dozen \$1.50.



EASTER LILY.



SPECIOSUM RUBRUM.—These are perhaps the most popular Lilies grown, being easy of cultivation, and produce large pinkish-red flowers of delicate beauty and strong stems; height from 2 to 4 feet; blooms in August. Ea. 15c; 3 for 40c.

MELPOMENE.—One of the most beautiful of the Lily family; frosted white and spotted, clouded and bearded with pinkish crimson. Petals recurved and widely bordered. Each 20c; 3 for 50c.

CANDIDUM.—The old-fashioned pure white garden Lily. Very hardy. Flowers snow white with very heavy stamens and sweet fragrance. Bears from three to twenty blossoms. This variety must be planted in the early autumn to succeed well, as it makes its leaf growth at once after planting and prepares itself for early blooming. It is beautiful, set in clumps of about a dozen, or in rows for a permanent border. Each 12c; doz. \$1.20. Mammoth bulbs, each 20c; doz. \$2.00.

DAY LILY

WHITE—(Funkia).—A very beautiful plant for partly shady places. Large, round, heart-shaped leaves, clusters of fragrant lily-shaped white flowers. Each 15c; dozen \$1.50.

BLUE.—Like above only flowers are of a lovely blue color, borne on tall spikes. Each 10c; dozen \$1.00.

VARIEGATED.—Beautifully mottled dark green and yellow leaves, lilac flowers. Each 15c; dozen \$1.50.



LILIES ARE ALWAYS A SOURCE OF GREAT PLEASURE. ALL ARE DESIRABLE

LILIES---Continued

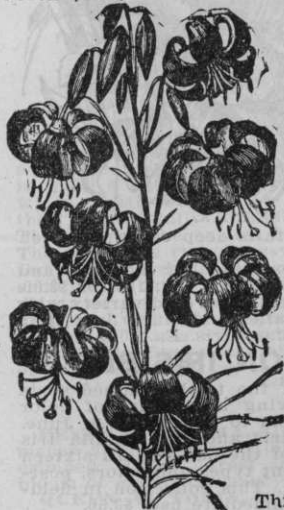
ORANGE LILY.—(*Hemerocallis Demorteri*).—Similar to the Lemon Lily, but of fine orange color. A bed of these and Lemon Lilies intermingled will give a most pleasing effect and a wealth of blossoms available for table decorations or bouquets. We wish we might persuade all our flower loving customers to try the two Lilies mentioned. Each 10c; dozen 75c.

LEMON LILY.—One of the handsomest flowers for garden culture. It is not a true Lily as the bulb is of a different shape, but the flower is very much like the *Lilium Speciosum* in form and about 3 inches in diameter. Color is a clear lemon yellow of very bright, peasing appearance. They have also a most delightful lemon fragrance. There seems to be almost no limit to amount of bloom produced. Each 15c; dozen \$1.50.

SPECIAL OFFER.—We will send three Lemon and three Orange Lily bulbs postpaid for 50 cents.

HEMEROCALIS KWANSO.—(Double Corn Lily).—A double flowering orange Lily that is entitled to a place in every hardy garden. Flowers beautiful orange, shaded copper, and blooms freely during July and August. Each 10c; dozen \$1.00.

TENUIFOLIUM.—The lovely Coral Lily of Siberia. Foliage finely cut. This is indeed a little beauty. Each 15c; per dozen \$1.25.



CORAL LILY.



LEMON LILY.



DOUBLE TIGER LILY.

TIGER LILIES

DOUBLE TIGER LILY.

—A splendid, striking flower, grand and stately. A double form of old Tiger Lily. Flower is densely double, orange red, spotted with black. Blooms freely. Ea. 15c; doz. \$1.35.

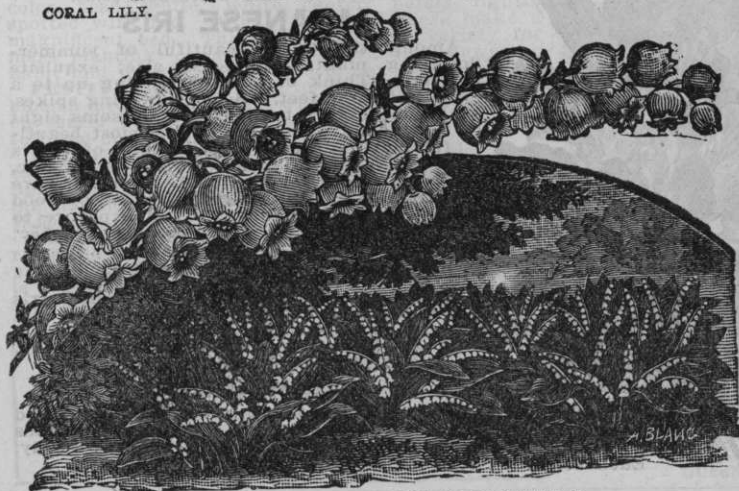
TIGRINUM SPLENDENS.—An improved Tiger Lily, growing sometimes 6 feet high and producing large pyramids of orange red flowers spotted with black. Ea. 10c; doz. \$1.

TIGRINUM.—The old form of Tiger Lily. Ea. 8c; dozen 75c.

SPECIAL BARGAIN OFFER OF LILY OF THE VALLEY

Most Delicately and Delicious of Blossoms.

This chaste and lovely flower is one of the most useful and charming of those that bloom in spring; the pure white, bell-shaped flowers are delicately scented and keep for a long time after cutting. Why not prepare this fall for a beautiful bed of them next season? Set out roots any time before the ground freezes, selecting a partly shaded and rather moist situation. Once planted and established crowns increase in number and the larger ones flower each year without attention. Prices very low for the choice stock we send out. Six strong roots for 15c; doz. 25c; 100 for \$1.25 postpaid.



LILY OF THE VALLEY.

NOTE THE SPECIAL OFFER ON LEMON AND ORANGE LILIES ON THIS PAGE

GERMAN IRIS

The true "Fleur-de-Lis," the national flower of France. Perfectly hardy, thrive anywhere, grow and bloom luxuriantly. Any of the German Iris named below 10c each; dozen \$1.00. Large field-grown clumps each 30c; doz. \$3.

ALEXANDER HUMBOLDT.—Standards violet, falls purple, veined white. Large bold flower in clusters of five on strong stems.

CELESTE.—Large open flower of pure celestial blue changing to porcelain blue as it ages. Profuse blooms well above the foliage.

FLAVESCENS.—Standards cream white, falls primrose veined bronze. Tall growing, late blooming variety.

FLORENTINA.—Rich indigo blue throughout. Flowers large, first in bloom and quite lasting. A very satisfactory sort.

FLORENTINA ALBA.—The best white iris. A lovely soft shade of color, very early and fine. Plant with Florentina for contrast.

HONORABLE.—Standards bright yellow, falls chestnut brown, veined white. Free bloomer. Striking in contrast planting.

LA TENDRE.—Standards lavender, falls light blue, thickly veined violet. A very pleasing, clean, bright color.

MADAME CHEREAU.—Pearly white, edged with broad margin of violet. Flowers crumpled beautifully. A satisfactory late variety.

PRESIDENT THIERS.—Standard mauve, pencilled brown at base. Falls purple, striped brown and white. Tall and vigorous.

SANS SOUCI.—Unique color combination, violet and yellow, flushed apricot. Blooms freely and holds its flowers well.

SHAKESPEARE.—Standards light yellow, veined seal brown, falls deep carmine violet. Striking in beauty with clean cut colors.

IRIS PUMILA.—A dwarf, early blooming variety, quite desirable for borders and edgings. Violet blue flowers. Each 5c; dozen 50c; 100 for \$3.00.

IRIS SIBERICA.—A favorite and small flowered variety with white and blue flowers. Foliage smaller and much finer than German Iris, resembling that of Japanese Iris. Ea. 10c; doz. \$3.

SUCCESION IRIS BED

One plant each of the twelve named sorts of German Iris, giving a contrast of color from first early spring to the middle of June. Also two Siberian Iris and two Pumila Iris for the outer edge of the bed. In all sixteen choice Iris of different types and colors, postpaid, for only \$1.50. This collection in field-grown clumps for immediate use, \$3.50.

JAPANESE IRIS

Among the most beautiful of summer-flowering plants. Immense size; exquisite coloring. Think of a plant sending up to a height of three feet, a dozen flowering spikes, each one bearing two to four blossoms eight or ten inches across, and of the most beautiful markings and combinations of colors—white, indigo, purple, bluish, yellow, etc. Except the Orchid, no other can compare with this flower; easily grown in any good garden soil. Plant with full exposure to sun. Double and single mixed, each 15c; dozen \$1.25.

ENGLISH IRIS

This species resembles the Spanish Iris in maner of growth and are hardy for outdoor planting in this section when covered. They are lovely flowers for indoor blooming. Per dozen 15c; 100 for \$1.25.

SPANISH IRIS

Graceful and airy in form. Colors and markings as varied as the Japanese, but of different shape. Sold as dry bulbs for indoor blooming at the north as they are not hardy. Each 3c; dozen 20c; 100 for \$1, postpaid.



IRIS GERMANICA.



JAPANEIRIS

GERMAN IRIS ARE SPLENDID FOR MASS BEDS IN ANY LATITUDE



Floral specialists have given this flower great care and attention, until there are now over a thousand named varieties, many of them curiously beautiful in shape and color. It is truly a noble flower rivaling the rose in brilliancy of color and perfection of bloom, while greatly surpassing it in size and stately grandeur. One writer has well said that the "Paeony fully equals the rose except in poetry, perfume, thorns, bugs and disease." They are of the easiest culture, most vigorous habit, and free from disease and insects. The foliage is rich, glossy and ornamental, even when plants are not in bloom. Many of the newer varieties are quite fragrant and no other flower is so well adapted for large showy bouquets. Plant paeonies this year, plant lots of them in rows, beds or as specimen plants on the lawn. They make a grand show. Fall is the best time to set out the roots and they will then begin blooming the next spring and each year become stronger and better. Plant in September, October, or any time before the ground freezes and protect slightly the first winter if planted late. They may be left undisturbed for twenty years or more. In planting set the crowns two inches below the surface. We pay the postage.

WHITE PAEONIES

FESTIVA MAXIMA.—By far the finest double white Paeony. The flower is of immense size, perfectly globular, the guard petals being large while the inner petals are crimped. Color purest snow white with a few slight carmine marks in the center. A bloom of exquisite beauty and the favorite for bouquets and vases. Each 50c; dozen \$5.00.

QUEEN VICTORIA.—Very double, and compact; color flesh white, white center, petals lightly spotted with red. A half dozen of these make a magnificent bed. This is the popular variety for mass planting, owing to low cost, free flowering habit and popular color. Each 25c; dozen \$2.50.

FESTIVA.—Second only to Festiva Maxima and blooms later. Fine ivory white; few carmine spots on center petals; very fragrant; blooms are very full and cupshaped. Each 35c; dozen \$3.75.

GOLDEN HARVEST.—This is probably the nearest approach to a yellow Paeony. Outer petals light blush, light yellow center. Very prolific, bearing flowers in clusters of three. Each 60c; dozen \$5.50.

MARIE LEMOINE.—A rare and a magnificent variety; flowers are enormous, opening a light blush pink, changing to white when flower is mature. It is a late bloomer. Very scarce and considered by specialists as the choicest paeony in the list. Each 65c; dozen \$6.50.

TRICOLOR PAEONY BARGAIN THREE DIFFERENT COLORS

One white, one pink, and one red, our choice of varieties, but good plans and will produce good flowers. A real bargain this season.

POSTPAID FOR 50c.



QUEEN VICTORIA.

PAEONIES SHOULD BE GROWN BY EVERYONE. THEY ARE SATISFACTORY

PAEONIES--Continued**PINK AND ROSE**

"ALL-AGLOW."—Iowa Seed Co.'s magnificent pink. Well described by its name; outer and guard petals are a delightful pink, while entire center is rich salmon tint. Flowers are extra large and intensely brilliant; blooms from medium early till very late. One of the best pink Paeonies in existence. Each 35c; doz. \$3.50.

VICTORIA TRICOLOR.—Is a very large, full flower; outer petals pale rose, inner petals white and center bright rose, thus showing three shades of color, from which it takes its name. Each 25c; doz. \$2.50.

FLORAL TREASURE.—One of the finest in the entire list. The flowers are extra large and very double; exceedingly prolific; color soft, delicate blush pink. Each 40c; doz. \$4.00.

LA ESPERANCE.—An exceedingly fine vivid rose-colored flower, growing compact and highly perfumed. Early and free flowering. One of the finest light pink sorts. Flowers extra large and stems grow strong and hold up the immense blossoms in fine shape. Each 25c; doz. \$2.50.

ANDRE LAURIES.—A very double flower of deep, bright rose. Blooms late in season. Strong, robust grower. Each 25c; doz. \$2.50.

HUMEL.—Very large and full and one of the finest; color bright pink and delightfully fragrant. Elegant foliage; a fine specimen for the lawn. Blooms late. Ea. 25c; doz. \$2.50.

BRIGHT AND DARK RED PAEONIES

RUTH.—Color of the American Beauty rose. An especially choice sort. Foliage rich, glossy green, ornamental even when the flower is not in bloom. Flower is of large size, perfectly double. Each 25c; dozen \$2.50.

MARECHAL VALIANT.—Beautiful solid flower of deep rose color, differing from most sorts in the solid flower having practically no division of outer petals and center. Very double; late flowering. Each 35c; doz. \$3.50.

GRANDIFLORA RUBRA.—Has extra large balls of blood red, magnificent flowers. Probably the largest red variety in existence, often 8 to 9 inches across. Give it rich soil and you will be surprised. Each 50c; doz. \$4.75.

RUBRA TRIUMPHANS.—An early blooming and very sweet-scented flower of rich, brilliant, glowing, satiny crimson color. Each 35c; doz. \$2.00.

POTSIL.—Color deep, dense, bright crimson; a free bloomer. A beautiful and desirable variety. Each 25c; per dozen \$2.50.

PRINCE IMPERIAL.—Deep purplish crimson, shining and satiny. Flower very double; rich and striking; early. Splendid sort for contrast with lighter shades. Each 50c; dozen \$4.50.



LA ESPERANCE.



GRANDIFLORA RUBRA PAEONY.

PINK PAEONY OFFER

We have a surplus of pink sorts, and as they are not all of one shade of color they will make a beautiful bed or border.

6 FINE PINK PAEONIES,
Postpaid for \$1.00.

PAEONY COLLECTION

Six fine Paeonies, including one of our beautiful "All Aglow;" the others all different.

Postpaid for \$1.00.

WE HAVE A SPLENDID PAEONY PLANTATION AND OFFER BEST VARIETIES

HARDY PHLOX

We know of nothing in hardy perennials more showy or effective than a fine collection of hardy Phloxes, and the new and improved varieties that have been introduced recently will add very much to their popularity. Flowers are very large and have exceeding brilliant shades of color. They bloom from June until very late fall.

HERMINE.—The most dwarf variety growing only about 10 inches high. Pure white flowers. Suitable for outer edging of the phlox bed. Each 15c.

PEARL.—Best pure white variety. Large, beautiful flowers. Each 10c. Can supply field grown clumps. Each 25 cents.

MRS. JENKINS.—The largest of pure white sorts. Immense panicles of bloom, early and free flowering. Splendid for mass planting. Each 15c.

PANTHEON.—A bright carmine rose blossom of great beauty. One of the most popular. Each 15c.

JEANNE D'ARC.—A pure white flower, blooming rather late, but remaining long in bloom. Each 10c.

COLIBRI.—A very late bloomer of good size and form. Color white with crimson center. Each 15c.

BOUQUET FLEUR.—A rather dwarf sort, producing large rounded trusses. Color white with deep rose eye. Each 10c.

WM. ROBINSON.—Splendid showy flower of salmon scarlet. No matter how many colors you have in the bed this one will be specially noticed. Each 15c.

HENRY MURGER.—An extra fine variety, having large white flowers, with very large crimson center. Each 15c.

MIXED VARIETIES.—A fine assortment. Each 10c; dozen 85c. Large field grown clumps, each 25c.



HARDY PHLOX.
CREEPING PHLOX

The Creeping Phloxes have a charming beauty all their own, and for general usefulness are not to be surpassed by any flower that grows. They will thrive in any situation, except a very shady one; and in any soil, no matter how poor, unless it is very wet. Absolutely hardy without protection. They have neat, evergreen foliage, and during the month of May, their multitude of lovely pink, white or blue flowers cover everything beneath as completely as a carpet covers a floor.

They bloom again in September, but not so freely. They do well on good soil, but are also desirable for covering rocky hill-sides, sandy slopes, bare ground too poor to grow anything else, and for edging borders of hardy plants or shrubbery they are unsurpassed. Three colors: pure white, deep pink and light blue. Each 10c; dozen 75c; per 100 \$5.00.



PHLOX SUBLATA (Creeping Phlox)

thing else, and for edging borders of hardy plants or shrubbery they are unsurpassed. Three colors: pure white, deep pink and light blue. Each 10c; dozen 75c; per 100 \$5.00.

SHASTA DAISY

A beautiful flower which can be grown out of doors by anybody where it is not cold enough to kill oak trees. It is perennial, blooming better and more abundantly each season. The flowers are extremely large and graceful, averaging about 4 inches in diameter with three or more rows of petals of purest glistening whiteness, and are borne on single, stiff, wiry stems, nearly 2 feet in length. Strong plants, 15c each; dozen \$1.25. Field grown clumps 25c.

YUCCA

FILAMENTOSA.—(Adam's Needle.)—Tropical looking plant with long, narrow leaves, remains green entire year. Grows in clumps and throws up flower stalks from 3 to 4 feet high, from which hang 100 to 300 creamy white, bell-shaped flowers. It blooms a long time. Each 15c; dozen \$1.50. Strong two-year-old plants 30c.



YUCCA FILAMENTOSA.

HARDY PHLOXES ARE STRIKINGLY BEAUTIFUL IN MIXED MASS PLANTING

YOU CAN PLANT SHRUBS JUST AS SUCCESSFULLY IN FALL AS IN SPRING

HARDY SHRUBS

There is nothing which so quickly, and for so little cost, adds so much to the beauty, cheerfulness and homelike appearance of a place as an assortment of hardy shrubs. They are permanent improvements which increase in size, value and beauty year after year. Our price is for strong, healthy plants sent by mail or express prepaid. Those marked large or dormant are strong two-year-old plants.

ARALIA SPINOSA

A curious, spiny-trunked, shrub-like tree, also sometimes called Hercules' Club or Devil's Walking Stick. Valuable for producing tropical effects. Very showy. Each 25c. Extra large size by express 75c.

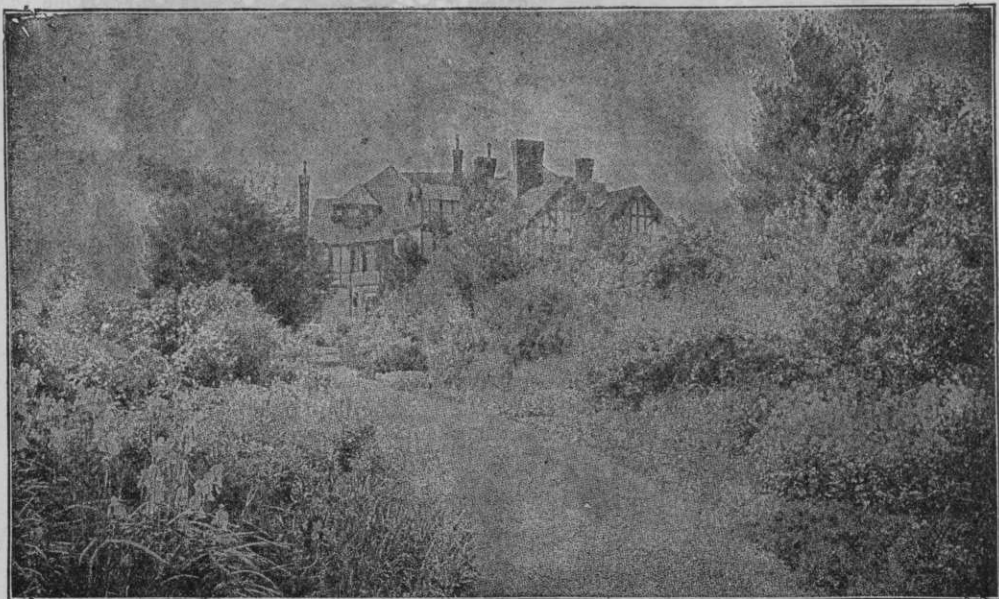
CYDONIA

JAPONICA—(Japan Quince).—Has bright scarlet crimson flowers. It blooms early in the spring and is fine for specimen plants on the lawn or f hedges. Each 15c; large 35c.

CORNUS

FLORIDA.—(White Flowering Dogwood).—An ornamental and spreading, irregular shaped tree producing large white flowers in the spring and rich crimson foliage in autumn. Large, 35c.

STOLONIFERA—(Red Twigged Dogwood).—A strong growing shrub with clusters of fine white flowers, the stem and branches turning blood-red in winter. Is very conspicuous and ornamental. Each 15c; large 30c.



A STRIKING EXAMPLE OF WHAT CAN BE DONE WITH HARDY SHRUBS.

CORCORUS

JAPONICA—(Kerria).—A beautiful and graceful shrub from 2 to 5 feet high and worthy a place on the finest lawn. The variegated foliage and the immense quantity of bloom make it always a prominent feature in any landscape effect. Almost constantly in bloom from June to October. Produces hundreds of large, double, yellow flowers. Each 15c; large 25c.

A GREAT SHRUB OFFER

Choice collection for permanent planting: 1 *Deutzia*, *Pride of Rochester*; 1 *Forsythia*; 1 *Spirea*, *Von Houttei*; 1 *Hydrangea*, *Paniculata Grandiflora*; 1 *Weigelia*, *Rosea*; 1 *Potentilla*; 1 *Syringa*; 1 *Lilac*; 1 *Snowberry*; 1 *Climbing Honey-suckle*; 1 *Flowering Currant*; 1 *Berberry*. All by mail, postpaid, 88c. Extra large two-year-old plants, by express, not prepaid, only \$2.00.

CALYCANTHUS

A beautiful sweet-scented shrub; flowers purple, quite double, exquisitely fragrant. Large size, each 25c.

LILACS

PERSIAN.—A well known, strong growing shrub, bearing large, fragrant clusters of purple flowers early in spring. Each 10c; large 25c.

SINGLE WHITE.—Like above, but has white flowers, making it more desired by some. Each 15c; large 35c.

FIERY PLUME.—A novelty in Lilacs; bright red color. Very showy and desirable. Each 25c; large 50c.

NEW DOUBLE WHITE.—A novelty of great merit and the finest flowering shrub which has been introduced for many years. The truss is of large size, and produced in profusion. The individual flowers resemble miniature tuberose. Each 25c; large 50c.

COMMON.—The old standard variety with bluish purple flowers. Each 10c; large 25c.

YOU CAN PLANT SHRUBS JUST AS SUCCESSFULLY IN FALL AS IN SPRING

DEUTZIA

PRIDE OF ROCHESTER.—By far the handsomest variety of Deutzias. It is a very desirable shrub of strong, hardy growth, with nice, luxuriant foliage and bearing an abundance of beautiful racemes of double, pure white flowers. Must be seen to be appreciated. Every one of our customers should have at least one. Ea. 15c; large 30c.

CRENATA.—Flowers double white, tinged with pink. Small 15c; large 25c.

GRACILIS.—A pretty, round, bush-shaped Deutzia blooming freely. Each 15c; large size 25c each.

CANDIDISSIMA.—Grows about 3 feet high; bears pure white flowers. Each 15c.

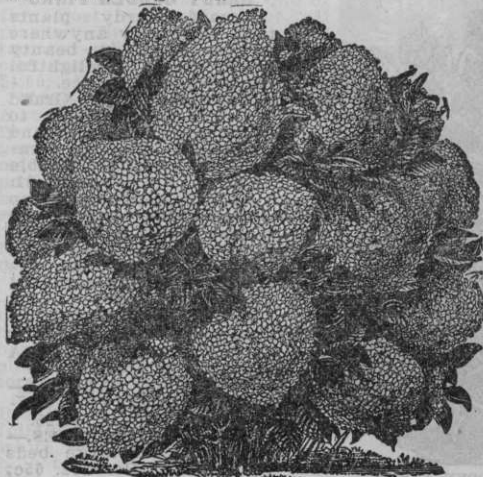
DWARF HONEYSUCKLE

RED TARTARIAN.—The best variety of Lonicera for general planting. Blooms in June, with beautiful pink and white flowers, followed by red berries. Ornamental through the season. Each 15c; large 30c.

SNOWBALL

COMMON.—A well known shrub covered with dense white flowers, hence name. Ea. 15c; large 25c.

JAPAN.—A valuable improvement on the common Snowball; the flowers are smaller, more numerous, frequently as many as twenty on a stem 18 in. long. Each 20c; large 35c.

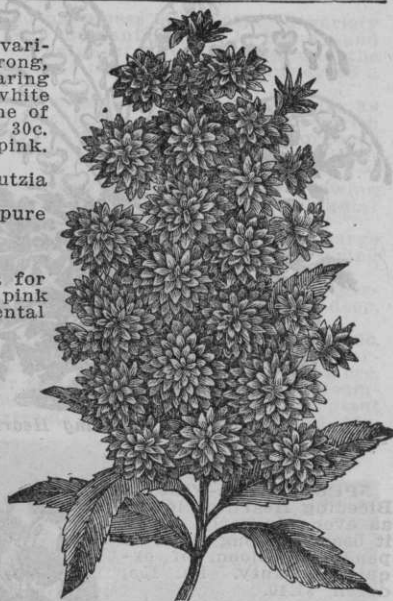


HYDRANGEA PANICULATA GRANDIFLORA.

HYDRANGEA

NEW SNOWBALL — (Arborescens Grandiflora Alba).—A magnificent new variety of the hardy Hydrangea. Flowers are borne much more profusely than on the Paniculata and though blooms are not so large they are pure white and more like the Snowball. Comes in bloom in July and August at a time when flowers of this type are scarce and is especially valuable for this reason. We believe this will become very popular as it is sure to give satisfaction. Each 25c; large 50c.

PANICULATA GRANDIFLORA.—The grandest as well as the most popular of all shrubs, and hundreds of thousands of them are sold every year and the demand is constantly increasing. Unsurpassed for the lawn, a hedge, or cemetery planting. It readily attains a height of 5 to 7 feet; hardy in all localities, needs no protection in winter; blooms the first and every season in July for two or three months; the flowers are massive, cone-shaped, sometimes 10 inches in length, and changing from the original pure white to pink, and finally to a beautiful, rich, coppery red. Each 10c; dozen \$1.00; per 100, by express, \$7.00. Large dormant plants each 30c; dozen \$2.50. Large tree form plants 75c. **Special.**—Two-year-old plants grown specially for hedges by express, per 100 \$14.00; 25 for \$3.75.



PRIDE OF ROCHESTER DEUTZIA.

SYRINGA

GRANDIFLORA. — (Mock Orange).—One of the strongest growing varieties with large flowers. Each 15c; large 30c.

LE MOINEL.—A charmingly fragrant variety. Flowers yellowish white. Each 15c; large 30c.

FLOWERING CURRANT

The old-fashioned large growing Missouri Flowering Currant, growing 6 to 8 feet high and bearing yellow flowers. Foliage fine cut and attractive. Each 20c.



JAPAN SNOWBALL.

A SMALL COLLECTION OF SHRUBS FURNISH FLOWERS FROM SPRING TO WINTER

DICENTRA (*Bleeding Heart*).**DICENTRA**

SPECTABILIS.—The old Bleeding Heart, as lovely as ever. In early spring it bears its long chain of pendulous bloom of exquisite beauty. Ea. 15c; dozen \$1.40.

CANTERBURY BELLS

We can furnish them, both double and single, in assorted colors. Ea. 10c; dozen \$1.00.

COLUMBINE

The Columbines are old favorite late spring and early summer blooming plants growing about 2 feet high, that succeed in any ordinary garden soil. The varieties offered are a selection of best kinds. Ea. 15c, doz. \$1.25. Large clumps each 25c.

DELPHINUM

FORMOSUM — (Hardy Larkspur).—Long spikes of bright blue flowers, blooming continually from June until frost. Handsome in clumps. Each 15c; dozen \$1.50.

GOLDEN GLOW

A glorious hardy plant that should find a place in every garden. It is of fine habit and vigorous growth. The stems are long and gracefully poised. It attains a height of six to eight feet, and will produce hundreds of bright yellow blossoms during August and September, each as large as a good sized Chrysanthemum. It is of easiest culture. Nice for a screen row at back of lawn. Price 10c; dozen \$1.00.

SWEET WILLIAM

Well known, free blooming, hardy perennial plants which produce masses of lovely, brilliant, sweet-scented flowers through a long period, making a splendid effect in beds. One foot high. Flowers borne on heads or umbels, with individual flowers nearly an inch across. Color white, pink, crimson, carmine, purple, etc., with eyes and rich markings. Each 10c; dozen 55c. Field grown clumps each 25c.



HARDY GARDEN PINKS.

ACHILLEA

THE PEARL.—Beyond question the finest of all plants for cemetery planting. The flowers are good sized, forming a beautiful plant eighteen inches high, completely covered with pure white flowers from July until frost. We cannot too highly recommend this for general planting. Each 10c; dozen 75c.

AQUILEGIA

These beautiful flowers, often called Columbines, are always beautiful and attractive, reminding one of the woods. Many handsome colors. Each 15c; dozen \$1.25. Large clumps 25c.

FOXGLOVE

(*Digitalis*).—These are most satisfactory summer flowering hardy perennials, succeeding under almost all conditions, and with but trifling attention will give a wealth of flowers during June and July. They are used extensively with good effect in shrubberies and in other shady situations. Each 10c; doz. \$1.00. Large clumps 25c.

HARDY GARDEN PINKS

Dwarf hardy plants that will grow anywhere and increase in beauty every year. Delightful clove-like fragrance.

HER MAJESTY.—Grand variety; plants grow to large size, spreading and producing immense numbers of pure white, double flowers. Ea. 10c, doz. \$1.

ABBOTSFORD.—Deep carmine marbled with white; clove fragrance.

COMET.—A splendid flaming, rosy crimson color, growing strong and vigorous.

WHITE RESERVE.—The nearest everblooming of the Garden Pinks. A beautiful white variety.

SOUV. DE SALE.—Soft rosy pink, very double. Ea. 15c; doz. \$1.25.

MIXED VARIETIES.—Desirable for large beds or borders. Per doz. 65c; 100 for \$4.00.

GOLDEN GLOW (*Rudbeckia*).

ORDER BEST NAMED VARIETIES AT ONCE. STOCK RAN OUT LAST YEAR

HARDY VINES

In making a home, plan for future beauty, comfort and happiness by planting a variety of hardy Clematis, ornamental vines and roses, which will constantly grow in beauty and size. Such permanent improvement adds greatly to the value of any property, and the value grows from year to year, so that instead of an expense they should be considered a paying investment.

AMPELOPSIS—Veitchi—(Boston Ivy).—One of the finest climbers for covering walls, as it clings firmly to the smoothest surface, giving it the appearance of being shingled with green leaves. In summer foliage is a rich dark green, but in fall it assumes gorgeous tints of crimson, scarlet and orange so dazzling as to be seen at a great distance. Each 15c; large plants 25c.

ARISTOLOCHIA—Dutchman's Pipe Vine.—The well-known, vigorous and rapid-growing climber used so extensively in archways, or verandas. It takes its name from the singular brownish colored flowers, resembling in shape a pipe. Each 40c.

BIGNONIA—Radicans.—An old-fashioned hardy climber. It has clusters of large trumpet-shaped crimson orange flowers. It grows in almost any soil and under trying conditions; hardy. Each 10c; large plants 25c.

CLEMATIS—Jackmanii.—Magnificent and showy vine; of strong, healthy growth, perfectly hardy and sure to succeed. Flowers four to six inches in diameter, of a rich, deep, velvety purple, distinctly veined. Strong plants, each 50c.

Henryi.—Briefly, a white-flowered Jackmanii. Finest of all the white sorts. Each 50c.

Mad. Edouard Andre.—The nearest approach to a bright red ever sent out. Same vigorous growth, hardiness and freedom of bloom as above; color is a pleasing carmine. Ea. 50c.

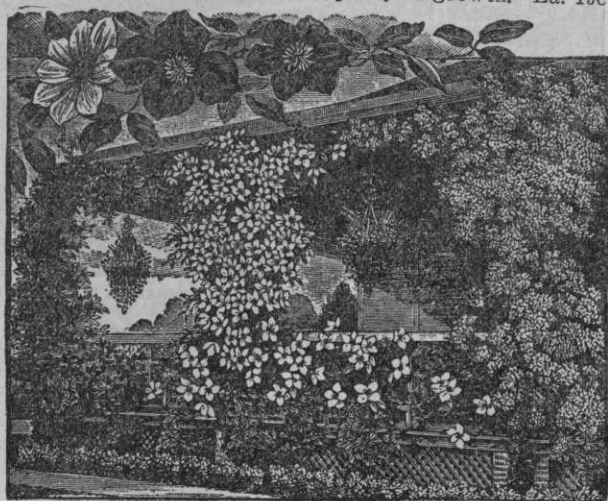
Paniculata.—This small-flowered variety is one of our most beautiful, hardy, fall-blooming vines. Pure snow-white flowers produced in immense clusters, fairly covering plant with mass of fleecy white. Deliciously fragrant. Of extreme rapidity of growth. Ea. 15c; large, extra strong plants 30c.

HONEYSUCKLE—Red Coral.—A shrubby climber and one of the most satisfactory of all plants. Bright red, fragrant, trumpet-shaped flowers almost continuously. Each 15c; dozen \$1.50. Large plants 25c.

HALLIANA—(Hall's Japan.) A strong, rapid grower, perfectly hardy and almost an evergreen, even in this severe climate. Blooms constantly and profusely from June to November. Flowers are pure white, changing to yellow, and of peculiarly delicious fragrance. Each 10c; doz. \$1.00. Large 20c; dozen \$2.00.

SILK VINE—Periploca Greca.—A beautiful, rapid-growing climber, 30 to 40 feet high; hardy. Leaves glitter like silk, hence its name. Flowers purplish brown and borne in clusters. Each 20c, large 40c.

VITIS—Variegated Grape.—Resembling Ampelopsis, with foliage green and variegated white and pink. Bears bright blue berries. Best for trailing over rocks or low fences. Each 15c; large 35c.



CLEMATIS JACKMANII. CLEMATIS HENRYII. CLEMATIS PANICULATA.

WISTARIA—Blue Chinese.—A very rapid grower, covered with bloom it is magnificent. Each 15c; large 35c.

WOODBINE—Virginia Creeper.—Strong, rapid grower, foliage large, dark green, in autumn bronze and crimson. This is an old favorite and quite common in most localities. Valuable for covering back porches, out-buildings, arbors, etc. Each 10c; dozen \$1.00. Large size 30c; dozen \$2.50.

Englemanni.—A smaller variety than the above, but of more clinging nature. Foliage light green, but changing to beautiful shades in fall. Each 25c.



WISTARIA.

HARDY VINE COLLECTION

One Ampelopsis, for the buildings; one Clematis Paniculata, for the front porch; one Honeysuckle, for the trellis in the front yard or on the lawn; one Woodbine, for the fence or screen. These are specially selected for the purposes mentioned but can be used to advantage in many different ways. We will send you one of each of the beautiful vines postpaid for 40c, or will send you extra large, strong plants suitable for immediate effects, by express, not prepaid, for 75c.

THE VINES LISTED ON THIS PAGE WILL TRANSPLANT SAFELY IN THE FALL.

FLOWER PLANT DEPARTMENT

We make a great specialty of this department and claim to fill more orders for flower plants than any concern in the west. We have thirty-two large greenhouses besides a large number of steam heated hot-beds and cold frames, thus giving us the largest amount of glass of any concern in central Iowa. We employ experienced florists to look after this branch of our business and all their time and attention is devoted to growing flower plants and bulbs exclusively for the mail order trade, as for this purpose they require special culture in greenhouses kept at a low temperature so that they will be hardy, healthy and vigorous. The plants thus grown are much better prepared for setting out in the open ground than those grown in the ordinary greenhouses which are kept at a high temperature. We are filling orders constantly from every state and also from various parts of Canada, Mexico, etc.

We Guarantee—That plants ordered from this list will reach purchasers in any part of the United States in good order if sent by mail or express.

Terms and Discounts.—At prices named we send plants postpaid except where noted. Orders must amount to at least 25c, for if of less amount they are filled at a loss. With each order of 50 cents or over we addvaluable plants without charge.



IOWA SEED COMPANY'S 32 GREENHOUSES

ASPARAGUS—Sprengeri.—Splendid for hanging baskets or pots. Droops most naturally, sending out numerous feathery fronds forming an exquisitely handsome and striking picture. Literally a mass of emerald green. Nice young plants ea. 10c; large size, ea. 25c.

Plumosus Nanus.—One of the handsomest of our foliage plants. Easily grown, even in a north window. Leaves are bright green, gracefully arched, as finely woven as the finest silken mesh; their lasting qualities, when cut, are remarkable, retaining their freshness for weeks. Each 15c; large 25c.



ASPARAGUS PLUMOSUS NANUS

ABUTILON—Arthur Belsham.—Green foliage. Flowers large, dark red without markings. Tall and erect; strong grower; free bloomer; a satisfactory variety. Each 15c.

Erecta.—Color of flower is pink, changing to orange. Good grower of upright habit. A variety of merit. Each 15c.

Golden Bells.—The best yellow flowering variety. Rather dwarf in habit, but a strong grower. A popular favorite and will please. Each 15c.

ABUTILON COLLECTION.—One plant each of the three varieties named above, postpaid, for only 35c.

ARAUCARIA — Excelsa.—A beautiful plant, resembling the pine somewhat, though much finer in texture. It is most unique in appearance. Its deep green, feathery foliage arranged in whorls—rising one above the other at regular distance—bakes it a plant of rare value for house or conservatory decorations. By mail, each \$1.00. Large, by express, not prepaid, \$2.00 and \$3.00 each.



ARAUCARIA

WE HAVE DOUBLED OUR GREENHOUSE CAPACITY IN THE LAST TWO YEARS

BEGONIAS



LOUISE ERDODY BEGONIA.

McBETHII.—Foliage fine, fern-like. Panicles of pure white flowers produced in the greatest profusion. It is the most persistent bloomer of the Begonias. Each 10c.

THURSTONII.—A stately growing variety with handsome glossy leaves. Remarkable fine foliage, the under side of leaves being rich purplish red, with prominent veinings, while the upper side is bronzy green, shaded crimson and olive and a metallic lustre over all. Flowers rosy white, borne in clusters. Each 15c.

FOURNAISE.—Flowers produced in large drooping panicles of bright red. Each 10c.

ALBA PICTA.—Has leaves of glossy green color, thickly spotted with silvery white, and white flowers. Ea. 15c.

MARJORIE DAW.—Beautiful trailing variety; its bright salmon pink flowers are produced in broad panicles. Bright green "angel wing" leaves. Each 15c.

REX.—The Rex or King Begonia may well be called the king of foliage plants and they make a magnificent showing with their rich, lustrous tints and tropical looking leaves. There are many different varieties, presenting a great range of beautiful markings and splendid color effects. Best results in moist and shaded situations, making it the very finest plant for household decoration. We have a particularly choice stock of these, including about twenty different kinds. We are sure they will please. Each 20c. Large specimen plants 40c.

BEAUTIFUL BEGONIA COLLECTION

One Rex, one Metalica, one Argentea Guttata, one McBethii, one Thurstonii, one Miniata, one Madam De Lesseps. Seven fine plants, giving a wide range of beauty. Postpaid for 75 cts

CHRISTMAS PEPPER

Surprisingly pretty house plant. A round, compact bush twelve inches in height with dark olive green leaves and covered with curious little heart-shaped fruits of bright colors—purple, white, yellow, orange and red on the same bush. Each 15c.

CUPHEA

PLATYCENTRA.—This is the old-fashioned Cigar Plant with racemes of narrow, tubular flowers of scarlet tipped with purple. Popular because it is always in bloom, and is bright and attractive. Each 10c.



REX BEGONIA

METALICA.—An elegant variety, having very large leaves shaded with green, crimson and olive, with a peculiar metallic lustre over all. Flowers a clear pink, shaded with white. Each 10c.

MADAM DeLESSEPS.—Has large leaves of silky texture, beautifully spotted with silver. Flowers pink and white. Each 15c.

NIWADA.—White flowers, delicately suffused rose, produced in good sized clusters of large flowers. Each 10 cents.

ARGENTEA GUTTATA.—Purple bronze leaves with silvery markings. The flowers are white. Each 10c.

MINIATA.—A beautiful variety of upright bushy style of growth; flower bright scarlet. They are very free flowering. Each 10c.



ARGENTEA GUTTATA BEGONIA.

BEGONIAS ARE FAVORITE HOUSE PLANTS FOR THE WINTER WINDOW GARDEN

CARNATIONS

Fragrant flowers always sought after, and the rich, spicy odor of the carnation, combined with its various colors, leaves little to be desired. Easily grown and bloom freely. At this season of the year we can only offer large field-grown plants, which are somewhat higher in price than the small plants offered in spring, but which will furnish winter flowers.

WHITE ENCHANTRESS.—One of the finest of white carnations. Type and habit like the original Enchantress. Flowers extra large and of purest color. Strong grower and profuse bloomer. Each 25c.

WHITE LAWSON.—Like the original Mrs. Lawson in size and manner of growth, but pure white. Each 25c.

DOROTHY GORDON.—This is of the Rose Pink Enchantress type, but is a more even pink color, while it is the most vigorous of the Enchantress class. Flower very large and beautiful. Ea. 30c.

WHITE PERFECTION.—Is pure white. Blooms three inches and over in diameter. Beautifully fringed; fragrant; exceedingly free blooming; early and continuous; vigorous; the stems are stiff. Each 25c.



Any Six
Carnations
on this
page, \$1.25

LADY BOUNTIFUL.—Is a large, nicely filled flower of purest white. Not only good for large sized blooms when given special care, but valuable for garden planting and pot culture. Very sweetly scented with that delightful old-fashioned clove fragrance lacking in many of the newer Carnations. Each 30c.

PROSPERITY.—Is unquestionably the largest carnation of any color ever offered, the flowers measuring 4 inches in diameter and have a delightful clove fragrance. The color is a pure white, overlaid with shadings of soft pink. Ea. 30c.

ENCHANTRESS.—A charming variety of immense size and delightful blush pink color. The original of the popular Enchantress type of Carnation, which is the favorite flower with florists. Each 30c.

ROSE PINK ENCHANTRESS.—This elegant new variety, which is a sport from the Enchantress, has created a great furore among florists and has captured the best prizes at flower shows. It is of extra large size and of beautiful rose color. Each 25c.

MRS. THOMAS W. LAWSON.—The immense pink variety for which \$30,000.00 was paid by Mr. Lawson, the highest price ever paid for a plant novelty in this country. Flowers 3½ inches in diameter; color beautiful deep pink. Each 25c.

NELSON FISHER.—Deep cerise pink, almost rose. A standard sort of easy culture; satisfactory in every way. Each, 25c.

BEACON.—Splendid new long-blooming red. Flowers are extra large, graceful form and of bright scarlet and slightly tinged orange. Each 30c.

VICTORY.—Many Carnation growers say it is the finest scarlet color of any carnation; even when the flowers are aged they seem to retain their bright color. Each 30c.

HARLOWARDEN.—Largest and best bright dazzling crimson. A free bloomer with long stems. Each 25c.



WHITE ENCHANTRESS AND HARLOWARDEN

CARNATIONS MAKE SPLENDID WINTER BLOOMING PLANTS FOR THE HOME

CALLAS

MAMMOTH WHITE.—Largest flowering variety and most majestic. It is of perfect flowering form, with large tropical appearing leaves of bright green color and yielding throughout the season a profusion of white flowers. Large bulbs each 25c, 3 for 60c; medium size each 15c, 3 for 40c.

LITTLE GEM.—A perfect miniature Calla, growing eight to twelve inches high, producing beautiful snow-white blossoms. Begins to bloom when only a few inches high, blooms summer or winter. Growing plants each 15c; 3 for 40c.

CACTUS

To some people these curious plants are interesting and attractive, and we therefore offer them here. We have many choice varieties at 10c to 25c each.

CHRISTMAS CACTUS.—*Epiphillum.*—Also known as Lobster Cactus. Stems branching and hanging in bunches. The flowers are bright red; plant blooms freely. Each 15c.

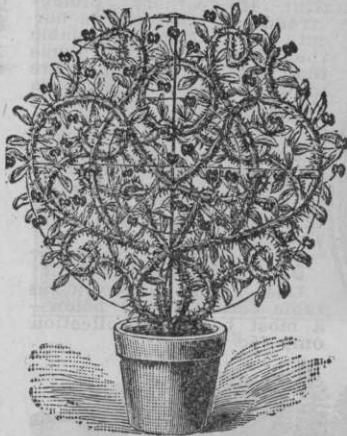
NIGHT-BLOOMING CEREUS.—A gorgeous Cactus bearing abundant pure white blossoms measuring twelve inches across. A plant loaded with these flowers is a sight never to be forgotten. Blooms at night and is very fragrant. Better order one and call your neighbors in to see it bloom. This is the true round-stemmed variety and not the common flat-leaved sort. Each 15c.

CYPERUS

UMBRELLA PLANT.—Very successfully grown as a pot plant, but requires plenty of water. Each 10c, large 25c.



LITTLE GEM CALLA.



CROWN OF THORNS

CROWN OF THORNS

EUPHORBIA.—Very curious and remarkable window plant. Strong-growing climbing plant or creeper that can be trained over any desired form. Has bright scarlet flowers, which almost cover the deep glossy green leaves; an object of rare and striking beauty. Is easily grown. Grows wild in Judea, and it is claimed that it was from this plant that the crown of thorns was made which was worn by our Savior, and it is therefore of especial interest. Ea. 20c.

CUPHEA

PLATYCENTRA—(Cigar Plant.)—The old-fashioned cigar plant with narrow, tubular flowers of scarlet tipped with purple. Popular because always in bloom; bright and attractive. Each 10c.

CYCLAMEN

GIANT FLOWERED.—Most beautiful and decorative of all pot plants, for winter and spring blooming. Foliage broad, massive and graceful, of dark olive green, beautifully variegated with silver and rose. The immense, fairy-like flowers are carried on long stems and produced in profusion for several months; quite fragrant. Assorted colors. Each 15c; extra large size 25c.

CHRYSANTHEMUM

Large plants in bud or full flower as desired. Can supply any color or type wanted at 50c to \$2.00 each. Sent by express at customer's expense for charges.

DRACENA

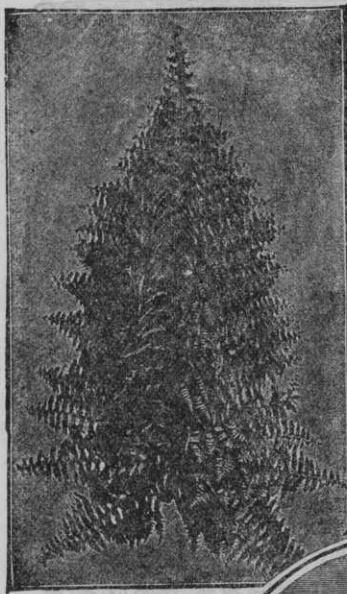
INDIVISA.—(Fountain Plant.)—Quite generally listed among palms. It is a decorative plant growing about 2 feet high, with slender, drooping, green leaves, long and narrow. Each 15c; large 25c.



CYCLAMEN

THE VARIATION IN COLORS OF THE FLOWER MAKES CYCLAMEN ATTRACTIVE

FERNS



ELEGANTISSIMA FERN

WHITMANI.—Combines all the graceful plumpness and charm of *Elegantissima* with additional features of size, shape and growth that give it distinction and added commercial value. More compact, and a wider and stockier shape. Each 15c; large 50c. Extra fine specimens \$1.00.

DAINTY SMALL FERNS

JAPANESE FERN.—(Onychium Japonicum.)—A very graceful small variety growing in similar form to the well known *Asparagus Fern*. Each 15c.

MAIDEN HAIR FERN.—(Adiantum Cuneatum.)—Very popular. The most graceful and useful of all for cut flower work. Each 15c.

DAGGER FERN.—(Aspidium Tsussimense.)—A miniature sword fern. Specially adapted to small ferneries or fern dishes. Each 15c.

HOLLY FERN.—(Cryptogramma Falcatum.)—Rather broad, dark, glossy green foliage. Easily grown. Very ornamental. Each 20c.

MOSS FERN.—(Selaginella Emilliana.)—Also called *Lycopodium*. Has delicate lace-like foliage. Fine for fern dishes and always beautiful. Each 10c.

SILVER FERN.—(Pteris Victoriae.)—One of the newer sorts with lovely foliage, each leaf of which has a silver variegation through the center. Each 20c.

CRESTED FERN.—(Pteris Wimsettii.)—One of the most popular of the small ferns. Striking lanceolated foliage; upright growth. Each 15c.

FLUFFY RUFFLES.—This is a very fine new upright growing variety, darker and richer in color than any other fern in our list. Fronds are as finely cut as the *Whitmani* or *Elegantissima* varieties, and exceeds either of these sorts in robust, hardy growth. The vigor, habit and color of this fern are so far superior to ordinary sorts that it will delight every one. Ea. 25c.

ELEGANTISSIMA.—This is a sport from the well known *Ostrich Plume Fern* in which the plummy peculiarity of the original form is even more distinctly developed, the side pinnae being again subdivided, making both sides of the frond equally beautiful while at the same time the plant is of much more compact habit, growing only one-half as tall, but with fronds nearly twice as wide, making it a much more desirable plant for all purposes. Quite rare. Each 15c; large 50c.

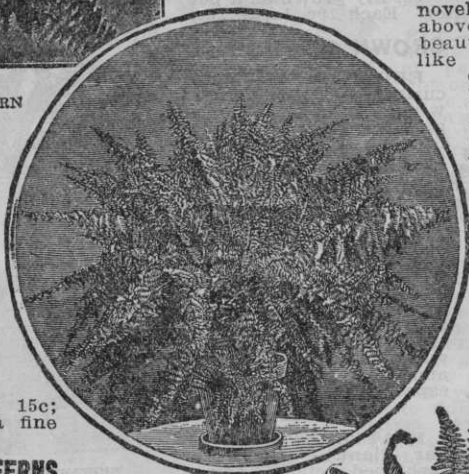
BOSTON FERN.—(Improved *Sword Fern*).—This is a wonderfully healthy, rapid-growing and graceful house plant which has been in great demand everywhere, and many people buy it in preference to the finest *Palms* or *Rubber Plants*. Thrives in all rooms, gas or furnace heat does not seem to injure it. It is one of the most beautiful and useful of house plants, being of easy culture and its sword-like fronds, on large specimens attaining a length of 5 to 6 feet, produced in bewildering mass, arching curves and interlacing in every conceivable direction. Each 15c; large plants 25c and 50c.

OSTRICH PLUME FERN.—(Amorphophili.)—A beautiful

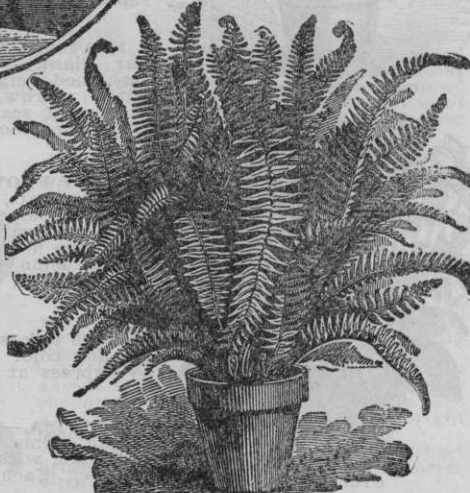
novelty which is a sport from the above but is indescribably more beautiful. Its feathery, plume-like fronds represented in our cut more nearly resemble the graceful ostrich plume than anything else in nature to which we can compare them. One has to appreciate its beauty and value. The fronds grow broad and very heavy, measuring at least six inches across when fully developed, increasing in beauty as they develop. Each 15c; large 25c, 50c and \$1.00.

DAINTY FERN COLLECTION

One each of the seven fine table ferns, named below—a most beautiful collection, only 75c.



WHITMANI FERN.



BOSTON FERN

ONE PLANT EACH ELEGANTISSIMA, BOSTON, OSTRICH PLUME AND WHITMANI FOR 50 CENTS

FUCHSIAS

These, when in full bloom, are the most graceful of all cultivated plants; nothing surpasses the beauty of well-grown specimens.

ELM CITY.—A popular variety and one of the best; tube and sepals bright coral red; large double purple corolla; blooms all year. Each 10c.

SPECIOSA.—Sepals bluish, corolla carmine. Best winter bloomer. Each 10c.

TRAILING QUEEN.—Of beautiful trailing habit; fine for hanging baskets. Bright rich scarlet and purple flowers. Each 15c.

WHITE PHENOMENAL.—The grandest double white variety in existence; should be in every home. Ea. 15c.

PHENOMENAL.—Enormous flowers, a single one measuring 3 inches across; sepals bright scarlet, rich purple corolla, very double, flaked with red. Each 10c.

MONARCH.—This is by far the largest of the single varieties. Its immense blooms are a very dark purple. Each 10c.

BLACK PRINCE.—Tube and sepals bright carmine, sepals large and broad with pale green tips; large, open, pale pink corolla. We once had a plant 7 feet high, bearing two thousand flowers at once. Each 10c.

STORM KING.—Sepals carmine, corolla white with faint tinge of rose. Flowers are very large. Has been the popular red and white double fuchsia for many years and appeals most to the lovers of flowers because of the pleasing contrast of color in the flower. Each 15c.

MRS. E. G. HILL.—Beautiful fine red sepals, white corolla. A standard variety of great beauty. Each 15c.



PHENOMENAL FUCHSIA

MARY.—This is a great novelty. Bears large clusters of small but very long, single, bright coral red flowers. Each 15c.

ROSAINES PAITRE.—Corolla double white with deep carmine sepals; a beautiful contrast. Extra large. Each 15c.

FUCHSIA COLLECTION

Six elegant varieties, our selection, but all different, for 50c postpaid.

AIR FERN

An exceedingly beautiful green, feathery, plummy moss, prepared from dried seaweed. Has every appearance of a most delicate fern and retains its beauty and fresh appearance for an indefinite period. Is much used in small baskets and fern dishes usually containing 2 to 4 bunches. Per bunch 25c; 3 bunches for 60c.

GREVILLEA

SILK OAK.—Is one of the quickest growing of any of the ornamental house plants. It is easy to manage, grows rapidly and is pretty in all stages of growth. With its long, drooping, silky foliage, it reminds one of a palm or fern. The young growths are of a light bronze color, the tips being covered with a soft down closely resembling raw silk. Each 15c.

GENISTA

SHOWER OF GOLD.—A most desirable plant. The drooping branches are covered with delicate sage-green foliage and every twig is tipped with a long raceme of exquisite pea-shaped blossoms of a pure canary color.

JASMINE

NIGHT BLOOMING.—World famous variety, producing pure white fragrant flowers incessantly. Each 15c.

CAPE JASMINE.—(Gardenia Florida).—A pretty, low-growing evergreen shrub with thick, glossy green leaves and waxy-white double flowers of delicious sweetness, highly valued for winter flowering in the house or conservatory. Each 20c.

GRANDIFLORUM.—An old favorite variety and most satisfactory. Valuable as a plant for winter blooming. Flowers pure white, star-shape. Fragrant. Each 15c.

NIGHT BLOOMING JASMINE.

THE AIR FERN ON THIS PAGE MAKES A FINE DECORATION ANYWHERE



AIR FERN



GREVILLEA OR SILK OAK.



THE VARIETIES HERE OFFERED ARE THE CREAM OF THE GERMAN NURSERY

GERANIUMS

Geraniums are the most easily grown and satisfactory of all flower plants, and only the rose can vie with them in popularity.

SINGLE FLOWERED VARIETIES.

AUREOLE.—(Mad. Bruant.)—Fancy flowered sort; remarkable colors. The plant is loaded with blooms and each floret is large, center being white and beautifully veined with carmine lake, radiating into a handsome aureole, each petal being bordered with bright solferino. Fine pot plant and a constant bloomer. Each 15c.

ALICE OF VINCENNES.—A charming novelty with border of intense scarlet forming band around the body color of rosy pink, heavily veined scarlet; center white. Ea. 10c.

BARIOLEGE.—Dwarf, vigorous growing and free flowering variety. A beautiful composite flower. Color is rose, lower petals blotched crimson, the upper are blotched white. Each 20c.

BLACK PRINCE.—A very dark, rich, velvety crimson. The nearest black known in single geraniums. Each 10c.

ELECTRIC GEM.—A fine variety, producing very large flowers on strong trusses. Color brilliant scarlet. Each 10c.

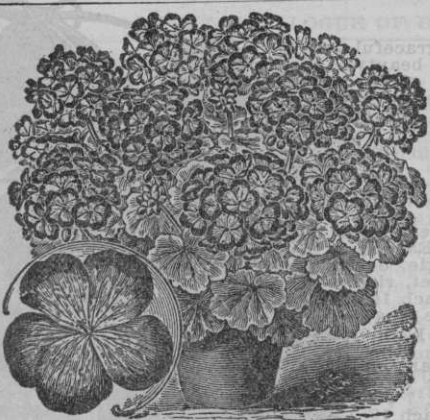
MRS. E. G. HILL.—A most distinct and pleasing shade of salmon with light shading at the center. Each 10c; dozen \$1.00.

MAXIME KOVALEVSKI.—A brilliant orange. A fine growing plant and probably the best of the single varieties for pot culture. The flowers are round, of splendid form. A novelty of great beauty. Each 20c.

SOUVENIR DE MIRANDE.—Handsome and most satisfactory. Nicely formed round florets; upper petals cream white, with distinct salmon rose border; lower petals salmon rose streaked with pure white. Free flowering; splendid blooms. Each 10c.

TELEGRAPH.—A splendid flower of apricot pink shaded cerise pink, with white eye. The general effect of color combination is very pleasing. Plant is very desirable in vigor and habit of growth. Each 15c.

YVETTE PROST.—Fine large flowers and strong trusses. Color violet rose shading to white center. A very striking and beautiful blossom. Good habit, vigorous grower, and generally satisfactory. Each 15c.



AUREOLE

DOUBLE FLOWERED VARIETIES

APPLE BLOSSOM.—(Mrs. Lawrence.)—Shining salmon, tinted white; free flowering; dwarf, compact habit. Extra fine as pot plant. Each 20c.

ALPHONSE RICARD.—Bright vermilion scarlet; trusses strong and upright. Free bloomer and of special merit for both pots and bedding. Each 10c.

BERTHA DE PRESLEY.—A beautiful light pink. Stands sun without fading. Sure to give satisfaction in pots. Each 15c.

BLUE BEAUTY.—A new color; a beautiful violet or purplish crimson with a blue sheen over the surface. Three upper petals have a spot of vermilion near the base. Each 15c.

DAGATA.—One of the finest new pink varieties of Bruanti. The plants are dwarf, robust growers and compact. Magnificent large flowers of mauve pink on immense trusses. Each 15c.

DR. PHILIPPE TISSIE.—Fine white center, outer edge of petals light crimson. Striking in its beauty and admirable in growth and habit. Each 20c.

FIRE DRAGON.—A cactus flowered scarlet novelty. Has peculiar and striking flowers of salmon center shading to white. Each 20c; dozen \$2.00.

GLORY DE FRANCE.—A large round flowered double geranium of waxy appearance. Petals very pink, veined with carmine. Each 15c.

IMPROVED LA FAVORITE.—What S. A. Nutt is among dark crimsons, La Favorite is among whites; is without doubt the best double white geranium ever offered. It is a strong grower and a profuse bloomer. Each 10c; doz. 85c.

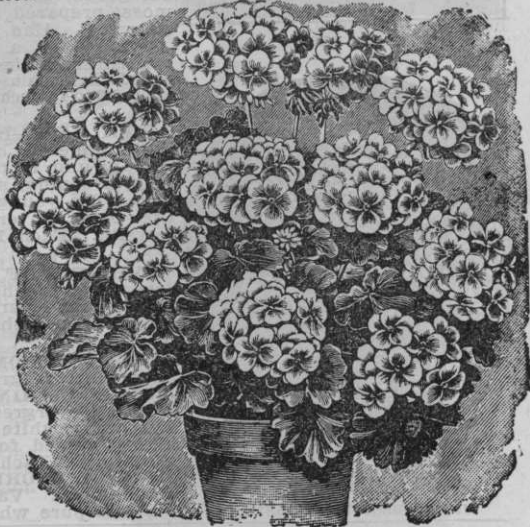
JEAN VIAUD.—Very large, semi-double blooms borne in large trusses well above the foliage; individual florets large, color bright rosy pink with distinct white blotch in center. Each 15c.

MT. SHASTA.—Pure white flowers, very large, semi-double; a profuse and constant bloomer. Each 15c.

OLD GLORY.—This grand novelty, introduced by us, is clear, bright rosy pink in color, with upper petals spotted pure white; truss of extra large size. Each 20c; dozen \$2.00.

S. A. NUTT.—The best crimson variety. Its dense, compact growth, profuse blooming qualities and sun-proof constitution combined give it the prominence it has attained. As a pot plant it cannot be excelled. Ea. 10c; doz. 85c.

TREGO.—Semi-double, and of intense, brilliant, almost dazzling scarlet color. Each 15c; dozen \$1.50.



BARIOLEGE

THE VARIETIES HERE OFFERED ARE THE CREAM OF THE GERANIUM LIST



EDEN MARCHI.—Has enormous sized flowers; color beautiful salmon rose, slightly shaded violet. Is a strong, free grower, producing flowers at almost every joint which are full double and perfect in form. Each 15c.

JEAN D'ARC.—Very large and finest white. Perfectly double, white as snow; flowers literally cover the plant when in full bloom. Each 10c.

FANCY LEAVED GERANIUMS

GRACE PAGE.—Identical with the old standard dark crimson, S. A. Nutt Geranium except in foliage, which is beautifully variegated. The leaves are of dark green, and each bears a border of pure snowy white. Each 20c; per dozen \$2.00.

WM. LANGGUTH.—This new silver-leaved Geranium is a beautiful variety; flowers are double and a bright red color, showing magnificently against the white foliage. Each 15c.

MRS. POLLOCK.—Magnificent. Green leaf disc, overlaid by beautiful bronze red, belted with bright crimson, outwardly margined with golden yellow. Each 15c.

MARSHAL McMAHON.—Golden yellow, marked with a deep chocolate zone. A splendid bedding variety. Each 15c.



WM. LANGGUTH GERANIUM

SCENTED GERANIUMS

NUTMEG.—Small leaves with nutmeg perfume. Each 10c; doz. \$1.00.

OAK LEAVED.—Beautiful foliage resembling oak leaves, black center with green border. Each 10c; doz. \$1.00.

SKELETON LEAVED.—Leaves very finely cut, rose fragrance. Each 10c; doz. \$1.00.

BALM.—Delicious balm fragrance. Each 10c.

LEMON.—A nice little plant of bushy growth with delightful lemon fragrance to the leaves. Each 10c.

PEPPER.—It is one of the most popular of the scented geraniums. Each 15c.

IVY LEAVED GERANIUMS

FLEUREUSE.—An improvement of the old popular Chas. Turner. Flowers very double, over two and one-half inches across. Color deep bright pink. Each 15c.

MRS. BANKS.—A splendid robust growing sort. Striking bloom of mauve pink, with heavy stripes of dark crimson in center. A very beautiful and unique geranium. Each 15c.

CAESAR FRANK.—Double as a Crimson Rambler rose. Specialists claim this to be the best Ivy Geranium. Color soft, rich crimson scarlet, shaded rose at base of petals. Foliage clean, waxy green. Vigorous, quick growing and strong. Each 15c.

ETINCELENT.—Beautiful scarlet; extra large flowers. Very double and will be satisfactory. Each 15c.

CRYSTAL PALACE GEM.—Yellow, with green disc; fine bedder. Each 10c.

MOUNTAIN OF SNOW.—Finest of this class for ribbon lines or massing; center of leaf bright green, margin broadly marked silver white, scarlet flowers. Each 10c.

DISTINCTION.—Round green leaves with clear black circle. Each 10c.

HAPPY THOUGHT.—A tricolored Geranium with dark green foliage; creamy white center with dark band about the light zone; flowers bright scarlet. Each 10c.

GOLDEN CIRCLE.—Green foliage; golden yellow edging; flower scarlet. Each 10c.

MRS. PARKER.—A grand new silver-leaved variety with double pink flowers. A unique novelty. Each 15c.

FRAGRANT COLLECTION.—Nutmeg, Oak Leaved, Balm, Skeleton, Lemon, Pepper. A half dozen of the sweetest of the scented varieties of Geraniums for only 50c, postpaid.

IVY LEAF COLLECTION.—Caesar Frank, Jean D'Arc, Mrs. Banks, Eden Marchi. One each of the four choicest ivy leaf varieties of Geraniums for only 45c, postpaid.

The Geranium blooms so freely and continuously, is so free from disease and insect troubles, is so thrifty under good or bad conditions, that it is the popular flower with the people.

A WELL-GROWN THRIFTY GERANIUM IS ALWAYS IN BLOOM IN HOUSE OR FIELD

LANTANA

We consider this one of the most satisfactory plants grown. It is the flower for everybody, both for outdoor bedding and blooming all winter in the house. It has a flower somewhat resembling the Verbena, borne on a woody, bush-shaped plant. The flowers embrace all shades of orange, sulphur, lilac, red, pink, white etc. changing from one distinct color to another as they increase in age and size.

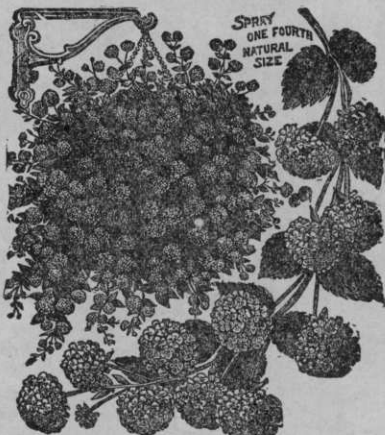
JAVOL.—The best, largest and freest blooming white variety. Will please everyone. Each 15c.

PERFECTION.—The only Lantana having variegated foliage. Is unusually handsome. Outside rows of florets are pink with rose center; inside florets very light sulphur yellow; orange center. Blooms freely. Each 10c; dozen \$1.00.

GOLD CUP.—A dwarf compact grower, with very pretty golden yellow flowers, having lemon yellow center. Each 10c.

AMIEL.—Semi-dwarf, very compact; fine bloomer; umbel and floret fine size. Reddish orange with yellow center. Recommended for its fine form and masses of bloom. Each 10c.

WEeping.—A beautiful trailing variety, very desirable for planting in hanging baskets, vases, pots or open ground. Bears an immense profusion of lovely clear pink flowers from early summer until late in fall. Everyone delighted with it. Each 15c.



WEeping LANTANA.

RADIATION.—Semi-dwarf; brilliant red with orange yellow center. Distinct and beautiful blend of color. Ea. 15c.

CORBEILLE D'ARGENT.—Dwarf white. Flowers large and profuse. Strong grower; very attractive. Each 15c.

VERSICOLOR.—When first open flower is cream yellow with red center. Cream gradually changes to pink, but flower is fine at all times. Each 10c.

LEO DEX.—Fine grower. Large round leaves; fine purple red flower. Most desirable. Each 10c.

PLEUR D'OR.—A solid colored flower of orange shade. An old sort but still standard. Each 10c.

RADIANT LANTANA COLLECTION.

Will please any lover of bright flowers. Perfect blossoms in fine variety. Certainly beautiful.

Radiation, Javol, Pleur D'Or, Perfection and Weeping Lantana. One each of five fine shades of color for only 50c, postpaid.

OTAHEITE ORANGE.

An extra fine pot plant, with glossy green leaves, the true fragrant orange bloom and abundant little bright oranges that hang on the little bush like balls of gold

for six months after ripe. With good culture are never out of fruit and at least two-thirds of the time in flower. In beauty, grace, fragrance there is nothing like its delicate, leafy sprays of bloom. Ea. 15c. Large size 50c ea. by express.



OTAHEITE ORANGE.



PONDEROSA LEMON.

PONDEROSA LEMON.

On a plant six feet high no less than eighty-nine of these ponderous lemons were growing at once. The tree was blooming at the same time and had fruit in all stages of growth, from the size of a pea to ripe fruit, showing it to be a true ever-bearer. Blossoms waxy white and as fragrant as orange blossoms. Fruit has been taken from tree weighing over 4 lbs. Has very thin rind for such large fruit. Makes a delicious lemonade, and for culinary purposes cannot be excelled. Fruits when quite small and makes a lovely house plant. Will fruit freely second year. Strong plants each 15c, postpaid. Large two-year-old plants 50c and 75c each by express.

THE LEMON AND ORANGE HERE NAMED MAKE FINE HOUSE PLANTS

PALMS

The most elegant and highly decorative of all plants and the low prices at which they are now offered place them within the reach of all. The following are the most desirable for house culture:

LATANIA BORBONICA, or Fan Palm.—A most popular variety, prized for its beautiful large fan-shaped leaves of deep, glossy green. Each 25c.

KENTIA BALMOREANA.—Considered one of the hardest and best palms. A rapid grower. Each 25c.

ARECA LUTESCENS.—Truly graceful and beautiful. Strong, upright grower with long, finely cut leaves. Easily grown. Each 20c.

PHOENIX CANARIENSIS.—The date palm. Will be found desirable in the palm collection. Leaves feather-like. Each 20c.

CYCAS REVOLUTA.—(Sago Palm.)—Magnificent and most impressive. Probably the most valuable decorative plant grown; their heavy, glossy deep green fronds resist alike the gas, dust or cold. Strong young plants 50c each, postpaid. Large specimen plants \$1.00, \$2.50, \$5.00, \$10.00 and \$15.00 each, according to size. By express, at purchaser's expense.

KENTIA FOSTERIANA.—A fine variety of the Kentia class. Vigorous; will thrive with ordinary care. Ea. 20c.

We can furnish fine large specimens of any of the above by express, not prepaid, at \$1.00, \$2.00 or \$3.00 each, according to size.

PALM COLLECTION

One Areca Lutescens, One Latania Borbonica, One Kentia, One Phoenix, One Fosteriana — Five Fine Palms, postpaid, for 85c.



LATANIA BORBONICA PALM.

RUBBER TREE

(*Ficus Elastica*).—During the past few years there has sprung up an immense demand for the Rubber Plant and it is highly valued everywhere for its tropical appearance. Leaves are very large, thick and leathery and of a beautiful shining green color. Everybody likes it. They are difficult to propagate and will always be high in price. Each 50c; large \$1.00 and \$1.50 each.

LIVING GREEN COLLECTION

In many homes it is not possible to grow blooming plants through winter successfully, yet there is no home in the land complete without a few living plants to drive out the cheerlessness of winter.

One Asparagus Plumosus Nanus, one Latania Borbonica Palm, one Boston Sword Fern, one Dracena or Fountain Plant, one Asparagus Sprengeri, one Cyperus or Umbrella Palm, one Pieris or Ostrich Plume Fern, one Sanseveria Zelanica—Eight plants, postpaid, \$1.

SANSEVERIA

ZELANICA.—It will grow in a dark, cool room or stand on the mantel in a heated sitting room. Will stand gas or dust and go months without water, yet remains as thrifty as ever. Singularly beautiful, as well as easily grown. Has erect, rigid, sword-like leaves which are thick and fleshy, dark green color, is beautifully striped crosswise with white. Each 15c. Large plants 40c.

STROBILANTHE

ROYAL PURPLE.—An excellent bedding plant and a beautiful foliage plant for pot culture. Forms a compact bush 18 inches high, with leaves 6 to 9 in. long, of beautiful metallic purple, shading into light rose with a light green margin, a combination unapproached by any other plant. Flowers violet blue, borne in immense racemes.



SANSEVERIA ZELANICA. Each 15c.



STROBILANTHE.

LIVING GREEN COLLECTION IS A BARGAIN. READ THE OFFER CAREFULLY



CHATENAY ROSE.

distinct from all others. Of large size and very symmetrical. Ea. 15c; two-year-old plants 35c.

FRAU KARL DRUSCHKI.—Immense snow white blossoms. Also known as White American Beauty. Each 20c; two-year-old plants 35c.

GOLDEN BEDDER.—The finest golden yellow tea rose. A strong, healthy, vigorous plant and a profuse bloomer. By some it is called Star of Lyons. Ea. 15c; two-year-old 30c.

KING OSCAR.—Hardy, strong growing variety and flowers as freely as any dark colored rose, though it will not produce as many flowers during the season as the Kaiserin or Killarney. It is such a rich, dark color that in comparison with other varieties it appears almost a maroon black. Each 20c; large two-year-old plants 40c.

KAISERIN.—Decidedly the finest white ever-blooming hardy garden rose. Soft pearly white, lightly tinted with lemon at center. Free, continuous bloomer. Buds of faultless shape, developing into large, very double flowers of exquisite fragrance. Each 15c; two-year-old plants 30c.

KILLARNEY.—Killarney is fast pushing out the other sorts with the city florists and the cut flowers sell at about fifty per cent higher prices, owing to the fact that the buds are especially long and the color of the rose is a peculiarly bright, living pink, more beautiful than any other pink rose that has ever been on the market. A free bloomer, easily grown, and of strong, healthy constitution. Each 15c; two-year-old 35c.

LA DETROIT ROSE.—The La Detroit rose is a magnificent new hybrid tea rose, of largest size and splendid form; color clear flesh pink, shading to deep rose; fine broad shell-shaped petals, very full and deliciously tea scented; a vigorous grower. Each 10c; two-year-old plants 25c.

LA FRANCE.—Beautiful form in bud and full bloom; very large, full and globular; a constant bloomer; in color pink or silvery rose—a satiny sheen, as it has been termed. Each 10c; two-year-old plants 30c.

MARIE VAN HOUTTE.—An old sort which has not been superseded. Flowers deep, double and canary yellow in color. As the flowers mature color changes to cream with tints of rose. Each 15c; two-year-old 30c.

ROSES

Varieties Suitable for Indoor Winter Blooming

AMERICAN BEAUTY.—One of the best and most valuable Roses for house culture. Color rosy crimson, exquisitely shaded and very handsome. Extra large, full flowers and fine buds. A good bloomer. Each 15c; two-year-old 35c.

ANTON ROVOIRE.—A hybrid tea of beautiful light pink color, delicate and lovely. A fine ever-blooming variety of robust, vigorous habit. One of the best of late introductions. Each 15c; two-year-old plants 30c.

BRIDE.—A fine pure white cut flower rose. Very double. Buds are of very large size, carried high and erect; unsurpassed for purity and whiteness. Ea. 15c; two-year-old 25c.

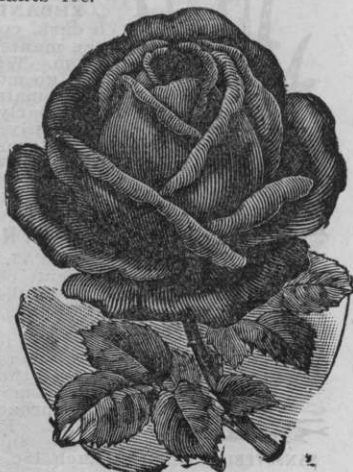
BESSIE BROWN.—Blossoms are very large in size, full double and of perfect shape; color creamy white flushed and tinged with pink. Blossoms freely. Each 15c; two-year-old plants 35c.

BRIDESMAID.—Like the Bride but of a lovely shade of clear pink. Thousands of this sort are grown every year for cut flowers, and it is also very desirable for summer bedding out of doors. Each 10c; two-year-old plants 25c.

CHATENAY.—A most wonderfully beautiful rose. Flowers are of elegant shape with slightly recurved petals. Color creamy rose shaded with rose carmine. An extra choice garden variety. Each 15c; two-year-old 35c.

CHAMPION OF THE WORLD.—The champion bloomer. It is claimed that one plant will produce more flowers during the year than ten plants of any tea rose. A color which few roses can equal; rich, deep, rosy pink. Each 15c; two-year-old plants 30c.

FRANCISCA KRUGER.—A strikingly beautiful rose of deep coppery yellow; quite unique and shade of clear pink. Ea. 15c; two-year-old 35c.



KING OSCAR.

YOU CAN GROW THESE ROSES DURING WINTER AND FOR SUMMER BEDDING



QUEEN BEATRICE.

healthy, exceedingly free flowering habit. Color, lovely shade of pink, striped with intense crimson, often shaded with rich golden amber at center and base of petals. Does not always show the variegation but it is always beautiful. Each 15c; two-year-old 35c.

RED LA FRANCE.—(Duchess of Albany.)—Deep rose pink hue. Very large, double and of superb form. Each 10c; two-year-old plants 35c.

REA REID.—A magnificent rose described by an enthusiastic rose lover as being "as large as American Beauty, as double as La France and as red as Richmond." Color is vivid scarlet-crimson and the flowers are marvels of beauty, large, bold and of splendid substance. Very hardy and of thrifty growth. Each 20c; two-year-old plants 40c.

STRIPED LA FRANCE.—Is a rich, creamy pink with silvery gloss, beautifully streaked and etched with carmine. Each 15c; two-year-old plants 30c.

SUNSET.—Beautiful old gold, shaded copery crimson, with sunset tints. Each 15c; two-year-old plants 30c.

WHITE KILLARNEY.—Exactly like Killarney except in color. It is one of the best garden roses, hardy in this climate with slight protection. Color is pure, snowy white; blooms large and buds long and pointed. Each 15c; two-year-old plants 35c.

WHITE LA FRANCE.—Identical with La France, except color. It is pearly white, sometimes tinted fawn. Each 10c; two-year-old plants 30c.

FRANCES E. WILLARD.—An extremely beautiful pure white rose. It is a strong, vigorous grower with buds and flowers of extra large size and perfect form; pure snow white and delightfully fragrant. Each 15c; two-year-old 35c.

FULL VALUE ROSE COLLECTION

Ten Choice Roses at a Remarkably Low Price

We grow hundreds of varieties of roses, but not a poor one. The demand for the different varieties fluctuates considerably and because we cannot gauge exactly the number of each kind that will be ordered we always have a surplus of some sorts, and if you will permit us to select the varieties we will send

Ten Choice Rose Plants Postpaid for 50 Cents

METEOR.—One of the standard varieties of hybrid tea or ever blooming roses. It is remarkable for the strong growth, constant and abundant blooming. The color is bright, rich, velvety crimson, a delightful shade and the most popular of colors. Flowers large, double, and its popularity is because it combines all desirable qualities of a choice rose. Each 15c; two-year-old 30c.

MALMAISON.—A pink rose of varied shadings, light blush, rose and deep pink. It is quite hardy and is very valuable for outdoor planting. Flowers very large and double and altogether a satisfactory variety. Each 15c. Two-year-old plants 30c.

MY MARYLAND.—The color is a soft, salmon-pink which lights up beautifully as the flowers expand. The shade is most pleasing. Under artificial light, it is even more beautiful than in daylight. Growth splendid, sturdy and healthy; foliage large and abundant; strongly and delightfully perfumed. Each 20c; large two-year-old plants 35c.

QUEEN BEATRICE.—A hybrid tea rose with flowers very large and double. Color deep pink, changing to lighter shade as it opens. Offered as the queen of pink roses, and it is stated to have brought the originator \$30,000. Each 20c. Two-year-old plants 35c.

RICHMOND.—A strong rival of the American Beauty. It is a beautiful scarlet crimson, as free blooming as any tea rose, and flowers extraordinarily fragrant. A standard variety because of its merit. Each 15c. Two-year-old plants 30c.

RED KAISERIN.—Distinct and pleasing shade of cherry red. A bright, free blooming sort with flowers of fine shape and substance. Ea. 15c. Two-year-old plants 35c.

RAINBOW.—An elegant tea rose, strong,



FRANCIS E. WILLARD.

THE FULL VALUE ROSE COLLECTION NAMED HERE IS A REAL BARGAIN

BASKET PLANTS

And Indoor Vines

ARTILLERY PLANT

A neat little plant resembling some ferns. Of graceful habit and desirable for baskets and vases. Each 10c.

CLERODENDRON

BALFOUR.—A unique and beautiful climbing plant. It presents a splendid combination of colors, having bright scarlet flowers with creamy white calyx; a profuse bloomer, young plants a foot high bearing several clusters. A strong and rapid grower. Each 15c.

GLECHOMA

(Variegated Ground Ivy.)—The foliage is a bright green, marked with pure white and has a refreshing fragrance similar to mint. Graceful and beautiful for hanging baskets. A general favorite with all of our customers as there is a continued and steady demand for it. Entirely hardy when planted out, and makes an ornamental, dense mat on the ground. Ea. 10c; doz. 75c.

ICE PLANT

Interesting from being covered with ice-like crystals. Flowers are very pretty. Each 10c.

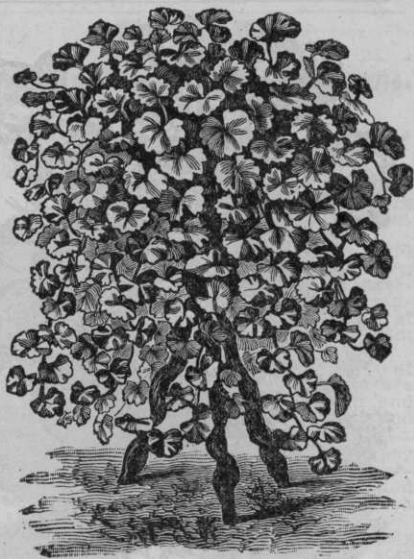
IVES

ENGLISH.—An old favorite vine, showy the year round if properly grown. Hardy in the south but will not stand our Iowa winters. Each 10c; large 25c.

VARIEGATED ENGLISH.—Foliage very prettily marked with pure white on dark green ground. Handsome as a pot plant in the window or for trailing from the sides of boxes or baskets. Each 10c.

KENILWORTH.—An old familiar trailing ivy. Perhaps the best for shaded places or rooms where light is not strong. Each 10c; dozen 75c.

GERMAN.—Well known ivy which is very popular as a plant for hanging baskets and vases. Can be grown with very little trouble. Each 10c; dozen 75c.



GLECHOMA



MANETTIA VINE

MANETTA

BICOLOR.—One of the handsomest little vines in existence. Easily and quickly grown; blooms continuously. Well adapted for hanging baskets, pot culture, vases or beds. Flower of size and shape shown in our cut, brilliant scarlet, tipped with clear golden yellow, making it most wonderfully attractive. Manetta Bicolor blooms constantly and profusely in winter when taken into the house. We heartily recommend this vine to all customers and feel assured of no complaint when tried. Each 10c; large size 25c.

PASSION FLOWER

MAMMOTH.—One of the most desirable of all climbing plants. Will climb up a trellis 10 to 12 feet high in a season and cover it over with pretty leafage and large clusters of handsome flowers. The flowers are 2 to 4 inches across and the colors a remarkable combination of red, white and blue flowers. Each 15c.

CONSTANCE ELLIOTT.—A white flowered mammoth variety which will add greatly to the beauty of both if planted so as to intertwine with the blue or red sorts. Each 15c.

PARLOR VINE COLLECTION

We offer on the next page a beautiful hanging basket collection at a low price, but many will prefer a few parlor vines for separate growing, and we offer you these beautiful little vines to meet this demand: 1 Vinca Major, 1 Saxafraga, 1 Manetta Vine, 1 German Ivy, 1 Kenilworth Ivy. Five fine vines, postpaid for 40c.

YOUR WINDOW GARDEN IS NOT COMPLETE WITHOUT A FEW VINES

THE FULL VALUE OF THESE VINES IS NOT APPARENT UNTIL THEY ARE PLANTED IN YOUR WINDOW GARDEN

BASKET PLANTS--Continued

PANICUM

VARIEGATED.—(*Oplismenus*)—A creeping perennial vine with narrow leaves nicely variegated white and pink, green and yellow stripes. Beautiful for baskets and vases. Also called dwarf Wandering Jew. Each 15c.

SAXAFRAGA

STRAWBERRY GERANIUM.—The well known, much used old plant for hanging baskets or vases. Long, strawberry-like runners. This is an old-fashioned plant but is still popular and will always be prized for its hardiness and thrifty habit. Will grow vigorously and give satisfaction under the hardest conditions. Plants each 15c; 4 for 50c.

SWAINSONIA

WHITE.—Beautiful new climbing plant. The habit of growth is extremely graceful, and a plant trained up at the side of a window or on a trellis presents a lovely sight of light green, feathery foliage, and a splendid profusion of pure white sprays of flowers resembling Sweet Peas in form. Easily grown. Each 10c.

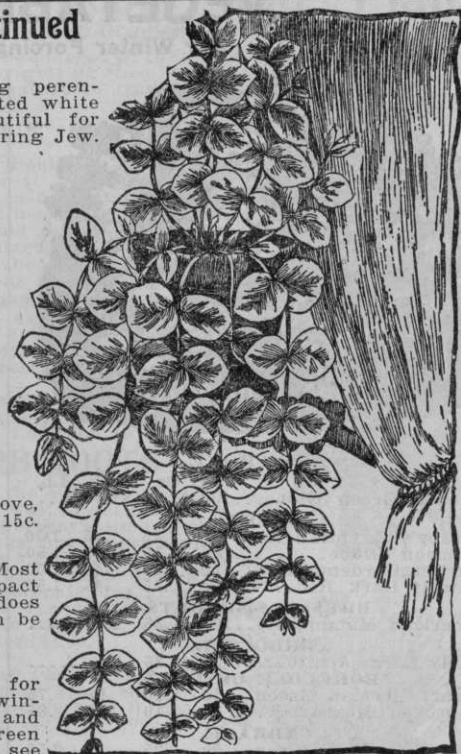
PINK.—A beautiful new sort, similar to above, except that the flowers are a clear pink. Each 15c.

SMILAX

A well known and handsome climber. Most popular of all vines with florists. Grows compact and upright and from the manner of growth does not require any great amount of space. Can be trained on a string. Each 10c.

WANDERING JEW

An old, well known trailing plant, nice for growing in hanging baskets, vases, pots or window boxes. We can supply the striped red and green, striped white and green and the plain green varieties. For the miniature or dwarf sort see description of *Panicum*. Ea. 10c; 4 for 25c.



VINCA ELEGANTISSIMA.

VINCA MAJOR

ELEGANTISSIMA.—One of the handsomest vines in existence. The long trailing stems of glossy green leaves are broadly margined and variegated with white and they are always bright and pretty. Plants are of easiest culture and grow very rapidly. Does well either in sun or in shade. Blue flowers. Each 10c; dozen \$1.00. Large size 25c.

HARRISONI.—Similar to above but with darker variegation. Very popular because of strong growth. A well grown plant will completely fill a large hanging basket. Each 10c; dozen \$1.00.

HANGING BASKET COLLECTION

This illustration of our popular collection but poorly depicts the great beauty of a hanging basket filled with appropriate plants, well grown and healthy. We have in this collection chosen a half dozen plants which will give splendid results with but little care and may be grown in any home window garden. At the price it is surely an opportunity.

BOSTON OR SWORD FERN.—The most popular decorative plant in entire list. Ea. 15c

REX BEGONIA.—Most beautiful of foliage plants and a source of satisfaction. Each 25c.

TRAILING ABUTILON.—Trailing variety of the well known Flowering Maple. Each 15c.

VARIEGATED VINCA.—Most popular vining basket plant on list. A favorite. Ea. 10c.

TRAILING FUCHSIA.—Adding attractiveness with its flowers and foliage. Each 15c.

WANDERING JEW.—The old-fashioned favorite basket plant. Each 10c.

One each of above by mail, postpaid, 60c. Or will send the six plants and one 8-inch wire hanging basket and moss for lining, all postpaid, for 95c.



HANGING BASKET COLLECTION.

THE HANGING BASKET COLLECTION IS ONE OF OUR MOST POPULAR OFFERS

VEGETABLE SEEDS

For Winter Forcing and Fall Sowing



ARTICHOKE.

	Pkt.	Oz.	¼ lb.	Lb.
French Green Globe...	10c	\$.35	\$1.00	\$...

BEEF.

Crosby's Egyptian.....	5c	.15	.45	1.50
Crimson Globe.....	5c	.15	.45	1.50
Market Gardener.....	5c	.15	.45	1.50
Detroit Dark Red.....	5c	.15	.45	1.50

BRUSSELS SPROUTS.

American Mammoth.....	10c	.35	1.00
-----------------------	-----	-----	------	------

BROCCOLI.

Early Large White.....	5c	.35
------------------------	----	-----	------	------

BORECOLE OR KALE.

Dwarf German Green...	5c	.10	.25	.75
Improved Mosbach.....	5c	.10	.30	.85

CABBAGE.

Johnson's First Crop...	5c	.25	.75	2.50
Jersey Wakefield.....	5c	.25	.75	2.50
Washington Wakefield...	5c	.25	.75	2.50
Copenhagen Market.....	10c	.35	1.25	4.00
All Head Early.....	5c	.25	.75	2.00
Surehead.....	5c	.25	.75	2.50
Danish Ball Head.....	10c	.30	.90	3.00
Flat Dutch.....	5c	.25	.60	2.00
S. S. Dumhead.....	5c	.25	.75	2.50
Volga.....	10c	.30	.90	3.00
Imp. American Savoy...	5c	.20	.60	2.00
Mammoth Red Rock...	5c	.30	.90	3.00

CAULIFLOWER.

Snowball	Pkt. 15c; ¼ oz. 65c; oz. \$2.25
Danish Giant.....	Pkt. 15c; ¼ oz. 65c; oz. \$2.25

CARROT.

Early Scarlet Horn.....	5c	.15	.40	1.25
Danvers	5c	.10	.30	1.00
Oxheart	5c	.10	.35	1.10
Chantenay	5c	.10	.35	1.10

CUCUMBER.

Early Express.....	5c	.15	.45	1.50
Davis Perfect.....	5c	.15	.40	1.25
Perfect White Spine.....	5c	.15	.40	1.25
Japanese Climbing.....	5c	.15	.40	1.25
Emerald	5c	.15	.40	1.25
Astro	15c	1.00
Rollison's Telegraph.....	15c	1.00

EGG PLANT.

Improved New York.....	5c	.35	1.20
------------------------	----	-----	------	------

ENDIVE.

Green Curled.....	5c	.15	.40	1.25
Giant Fringed.....	5c	.15	.50	1.50

LETTUCE.

Early Curled Simpson...	5c	.10	.30	1.00
Black Seeded Simpson...	5c	.10	.30	1.00
Morse	5c	.15	.40	1.25
Grand Rapids.....	5c	.15	.40	1.25
Hanson	5c	.15	.40	1.25
Romaine	5c	.20	.50	1.50

ONION.

	Pkt.	Oz.	¼ lb.	Lb.
Large White Globe.....	5c	.25	.75	2.50
Yellow Globe Danvers...	5c	.15	.40	1.35
Southport Red Globe...	5c	.20	.60	2.00
Extra Early Barletta...	5c	.15	.50	1.75
White Bermuda.....	5c	.30	.80	2.75
Mammoth Silver King...	5c	.15	.50	1.60
Mammoth Prizetaker...	5c	.15	.50	1.75

PARSLEY.

Market Gardeners.....	5c	.15	.40	1.25
Champion Moss Curled...	5c	.15	.40	1.25

RADISH.

Model White Box.....	5c	.10	.25	.75
Icicle	5c	.10	.25	.85
White Strasburg.....	5c	.10	.25	.85
Early Bird.....	5c	.10	.30	1.00
Sparkler	5c	.10	.30	1.00
Crimson Giant Forcing...	5c	.10	.30	1.00
French Breakfast.....	5c	.10	.25	.75
Scarlet Globe.....	5c	.10	.25	.85
Early Long Scarlet...	5c	.10	.20	.65
Brightest Long Scarlet...	5c	.10	.25	.75
Improved Chartier.....	5c	.10	.25	.75
Violet Queen.....	10c	.20	.50	1.50
Golden Dresden.....	5c	.10	.30	1.00
Striped Triumph.....	5c	.10	.30	1.00

SPINACH.

Victoria	5c	.10	.15	.35
Long Standing.....	5c	.10	.15	.35
Bloomsdale	5c	.10	.15	.35

TOMATO.

Spark's Earliana.....	10c	.35	1.00	3.50
Acme	5c	.25	.75	2.50
June Pink.....	5c	.35	1.00	3.50
Favorite	5c	.20	.60	2.00
Perfection	5c	.25	.75	2.50
Matchless	5c	.30	.90	3.00
Stone	5c	.25	.75	2.75
Dwarf Champion.....	5	.30	.90	3.00
Dwarf Stone.....	10c	.35	1.20	3.50
Ponderosa	5c	.35	1.00	3.50
Crimson Cushion.....	5c	.35	1.00	3.50
Majestic	10c	.50	1.50	5.50
Red Majestic.....	10c	.50	1.50	5.50
Yellow Majestic.....	15c	1.00
Golden Nugget.....	10c	.75
Yellow Pear.....	5c	.30
Peach	10c	.40



COOPER'S SPARKLER RADISH

FOR COMPLETE LIST OF VEGETABLE SEEDS, SEE OUR LARGE CATALOGUE

Permanent Garden Roots and Plants

Ready for Delivery about October First

The plants and roots listed below can all be planted in the fall with success, and you can thus save time from rush of spring work by getting them ready for next year in advance. We ship as soon as they are sufficiently mature to transplant successfully and we feel sure they will succeed for you.

ASPARAGUS ROOTS



ASPARAGUS.

It pays to have a small bed of asparagus so as to gather it fresh, and when once set, a bed will last many years. Our roots are strong and healthy. We recommend the one-year-old roots as more desirable for general planting than the two-year-old, as well as cheaper. Ask for circular giving directions for planting.

CONOVER'S COLOSSAL.—25c per doz.; 100 90c, postpaid. By express or freight, at purchaser's expense, 100 60c; 1,000 for \$4.

COLUMBIAN MAMMOTH WHITE.—30c per doz.; 100 \$1.10, postpaid. By express, 100 75c; 1,000 \$5.00.

Two-year-old roots of either variety 50c per doz., 100 \$1.50, postpaid. By express or freight 100 \$1.00; 1,000 for \$6.00.

RHUBARB ROOTS

Everyone realizes the value of rhubarb or pie plant in the home garden. The best way to get a start is to purchase a few roots as you can save one year's time in this way. The roots we offer are not seedlings but large divided plants. Plant in spring or fall, setting plants 3 ft. apart each way.

VICTORIA.—The standard for general use. Each 15c; 5 for 70c; doz. \$1.50, postpaid. By express, not prepaid, doz. \$1.00.

IDEAL MAMMOTH.—The largest and best variety. See description in spring catalogue. Strong roots 25c each, dozen \$2.00, postpaid. By express, not prepaid, doz. \$1.50.

HORSE RADISH.

Grow in your own garden and grate fresh. Plant sets small end down in rows 2 ft. apart, about 18 inches apart in row. Do best in rich, loose soil set slanting and covered 2 inches. Doz. 15c; 100 75c, postpaid; by express, per 100 50c; 1,000 \$4.

CHIVES.

Perfectly hardly little perennials of the onion tribe, and are grown entirely for their tops, which are used wherever the flavor of onion is required. Plant in small clumps in any common garden soil and they will grow readily. The tops appear very early in spring and can be shorn throughout the season. In New England it is considered indispensable for use in omelets. Roots per bunch 15c; 3 for 35c; doz. \$1.00.

PERENNIAL OR WINTER ONION SETS.

Also called Egyptian or Tree Onions. Set about September 1st to 15th. They produce the earliest spring onions and once set out come up year after year without the slightest winter protection. Per qt. postpaid, 25c; by frt., peck 65c; bushel of 28 lbs., \$2.00.

MUSHROOMS.

Improved English Spawn. The ease and certainty with which mushrooms can be grown to perfection in an ordinary house-cellar or barn, and the astonishing success of so many who have taken up this new industry, induces us to call special attention to the subject. Always in demand at paying prices. Cultural directions free. Book "Mushroom Culture," 10c. Brick weighing 1½ lbs. 40c postpaid; 5 lbs. not prepaid 65c; 10 lbs. \$1.

HOP ROOTS.

ENGLISH CLUSTER.—Producing the hops of commerce. Used for making yeast etc. Ea. 15c; 3 for 35c; dozen \$1.00.

PLANTS OF GARDEN HERBS.

Tarragon. — Spearmint. — Peppermint. — Balsam Mint. — Bergamot. — Holt's Mammoth Sage. — Artemisia (Old Man). — Pennyroyal. — Rosemary. — Catnip. — Tansy. — Thyme.

Any above plants 15c each, 3 for 40c. Set of 12 for \$1.20, postpaid.



HORSE RADISH.



CHIVES.



HOP VINE.



PERENNIAL OR WINTER ONION SETS.

FLOWER SEEDS

For Fall Planting in the Open Ground

Below we list seeds of hardy perennial flowers and also some of the hardier annuals which can be sown in the fall successfully. Unless otherwise noted we recommend the planting of these flower seeds about September 1st. For description see our large catalogue.

ACROCLINIUM—(Everlasting)—Mixed colors, p. 5c; oz. 20c.

AMOBIMUM—*Alatum Grandiflora*—(Everlasting)—Pkt. 5c.

AGROSTEMMA—(Perennial)—Mixed, pkt. 5c.

ARABIS—*Alpina*—(Perennial)—White, pkt. 5c.

AQUILEGIA—(Columbine)—(Perennial)—**Double Mixed**, pkt. 5c. **Chrysantha**—Canary yellow, pkt. 5c. **Coerulea**—Violet, blue and white, pkt. 10c.

BLUE BELLS—Scotland's flower, pkt. 10c.

BUTTERFLY FLOWER—(*Schizanthus*)—Mixed colors, pkt. 5c.

CANTERBURY BELLS—(Perennial)—Double and single mixed, pkt. 10c.

CALLIOPSIS—(Perennial)—Single mixed, pkt. 5c; ¼ oz. 10c; oz. 30c.

Double Mixed—Pkt. 10c; ¼ oz. 25c; oz. 75c.

Lanceolata—Pkt. 10c; ¼ oz. 25c; oz. 75c.

Golden Wave—Pkt. 5c; ¼ oz. 15c; oz. 45c.

CAMPANULA—*Cup and Saucer*—Blue, pkt. 10c.

Single Mixed—Pkt. 5c. **Double Mixed**—P. 10c.

CANDYTUFT—*Sempervirens*—(Perennial)—Pkt. 10c.

CHRYSANTHEMUM—(Perennial)—Mixed Pkt. 10c.

DAISY—*Giant Snowball*—Pure white, pkt. 10c.

Best Double Mixed—Pkt. 5c.

DIANTHUS—(Pinks)—**Oriental Mixed**, pkt. 10c.

Fireball—Rich, blood red, pkt. 5c.

Snowball—Pure white, pkt. 5c.

Imperialis—Best double mixed, pkt. 5c; ¼ oz. 15c; oz. 40c.

Heddewigi—Single mixed, pkt. 5c; ¼ oz. 15c; oz. 50c.

FOXGLOVE—(*Digitalis*)—Mixed colors, pkt. 5c.

Gloxiniifolia—Four to five feet, pkt. 5c.

Monstrosa Mixed—Flower on top of spike, pkt. 10c.

GAILARDIA—(*Blanket Flower*)—**Grandiflora**, pkt. 10c.

Perfection—Double flower, mixed colors, pkt. 5c.

GOLD AND SILVER FLOWER—(Perennial)—Pkt. 10c.

GLOBE AMARANTH—(*Gomphrena*)—Mixed colors, pkt. 5c.

PANSY—*American Giant*—Extra, p. 15c; ¼ oz. \$2.50.

New Rainbow—Choicest mixture, pkt. 20c; ¼ oz. \$4.

Mammoth Butterfly—Fancy, pkt. 10c; ¼ oz. \$1.50.

Imperial German Mixed—Pkt. 10c; ¼ oz. \$1.00.

Giant Trimardeau—Pkt. 10c; ¼ oz. \$1.00.

Bedding Mixed—Good sorts, pkt. 5c; ¼ oz. 35c; oz. \$1.

GOLDEN ROD—Well known perennial, pkt. 5c.

GRASS PINKS—Hardy scented varieties mixed, p. 5c.

HIBISCUS—Hardy Annual—**Crimson eye**, pkt. 5c.

Golden Bowl—Canary yellow, black eye, pkt. 5c.

HELICHRYSUM—**Monster Mixed**—Everlasting, pkt. 5c; ¼ oz. 15c; oz. 50c.

LINUM—(Perennial Flax)—Pkt. 5c; ¼ oz. 15c; oz. 50c.

LUPINUS—Mixed white varieties, pkt. 5c.

LARKSPUR—*Elatum Hybridum*, mixed, pkt. 5c.

Elatum Flore Pleno—Double flowered mixed, p. 15c.

Hybridum Nanum—Semi-dwarf single mixed, p. 10c.

LYCHNIS—*Chalcedonica*, scarlet, 3 ft., pkt. 5c.

Haageana Mixed—Perennial—mixed colors, pkt. 10c.

GYPSOPHILA—(*Baby's Breath*)—Pink white, pkt. 5c.

JOB'S TEARS—*Coix Lachryma*—Pkt. 5c; oz. 15c.

PHLOX—(Perennial)—Mixed varieties, pkt. 5c.

PENTSTEMON—**Finest Mixed**—Perennial, pkt. 10c.

POPPY—*Oriental Hybrids*—Hardy varieties, pkt. 10c.

Iceland—Hardy perennial, mixed colors, pkt. 10c.

SWEET PEAS—Sow late in the fall just before ground freezes, cover with coarse straw or litter.

Spencer Mixed—Finest Spencer varieties, pkt. 10c;

oz. 25c; ¼ lb. 70c; lb. \$2.50.

Imperial Mixed—Best grandiflora mixture, pkt.

5c; oz. 20c; ¼ lb. 60c; lb. \$1.75.

California Giants—Pkt. 10c; oz. 25c; ¼ lb. 75c.

Perfected Mixed—Best field grown mixture, pkt.

5c; oz. 15c; ¼ lb. 45c; lb. \$1.25.

Fine Mixed—Pkt. 5c; oz. 10c; ¼ lb. 30c; lb. \$1.00.

Perennial Mixed—Hardy without protection, pkt.

5c; oz. 20c; ¼ lb. 60c; lb. \$1.75.



SWEET WILLIAM—**Single Mixed**—Hardy perennial, pkt. 5c; ¼ oz. 10c; oz. 25c.

Double Mixed—Same, as above with double flower, pkt. 7c.

YOU WILL BE PLEASED WITH FLOWER SEEDS PURCHASED FROM US

WINDOW GARDEN SUPPLIES

All articles in this department go by freight or express, your cost, unless otherwise stated.

WIRE PLANT STANDS.—We carry a much larger stock than any firm in the west, and in place of common iron frames we have them manufactured with steel frames, and they are far stronger, handsomer and lighter than any yet offered. They are well braced in every direction, with good strong casters, and will easily support all the plants that can be placed on the shelves. Nicely finished with green paint and gold bronze. Will last twenty years with proper usage, and as they weigh only 15 to 40 pounds each, the freight is trifling. Notice reduced prices.

NO. 3.—Similar in style to No. 10, but much larger. Height of stand and arch about 6 feet, width 4 feet, depth 31 inches. Has four legs. List price \$8.00. Our net price only \$6.50.

NO. 4.—Like about, but without arch or hanging basket. List price, \$6.50. Net, \$5.00.

NO. 6.—One of our most popular styles, quite ornamental, and for persons having but few plants, one of the most desirable. A vining plant at each end of top shelf and trained over arch adds greatly to its attractive appearance. Height 6 feet, shelves 36 inches long. List price \$5.50. Our price \$4.50.

NO. 7.—Exactly like No. 6, except that it has no arch or basket. List price \$4.00. Our price \$3.40.



No. 3.



No. 6.



No. 8.

NO. 8.—Holds a large number of plants and all get equal light. Size 42 inches high, 26 inches deep; has three shelves each 36 inches long; will hold about 30 pots. List price \$6.50. Our price only \$5.00.

NO. 9.—Same as No. 8, with arch and basket added. List price \$8.00. Our price \$6.50.

NO. 10.—A very popular stand, well shown by the engraving, but the arch is Gothic pattern, same shape as No. 3. Holds 20 to 30 plants. Height 5 feet 10 inches; width 40 inches, and 26 inches deep. We sell more of these than any other pattern and are thus enabled to make a specially low price. List price \$7.00. Our price, including arch and hanging basket, only \$5.00.

WIRE WINDOW SHELF.—These can be fastened to window frames, either inside or outside. They are strong and attractive, 36 inches long,

6 or 7 inches wide. The border is not as high as shown in the engraving. Price \$1.00 each.

WIRE BRACKET.—This new pattern is a very cheap, handsome bracket, made of tinned wire. It is easily put up, adjustable, can be instantly removed, is simple, practical and durable. Price, 4-inch, 10c each, \$1.00 per dozen; 5-inch, 12c each, \$1.25 per dozen; 6-inch, 15c each, \$1.50 per dozen. Postage, each 8c extra.

WIRE HANGING BASKET.—Made of wire with wire chain attached. If lined with moss and filled with soil they are quite attractive. Light, strong and durable. By express, 8-inch, 25c, 10-inch 35c. Postage, each 15c.

HANGING BASKET CHAINS.—Plain 3-strand steel chains, separate each 10c, by mail 18c.

BIRD CAGE HOOKS.—Useful for suspending bird cages or hanging baskets; made of cast iron with screw to fasten in the woodwork or window casing. Each 12c, postpaid.

OUR WINTER WINDOW GARDEN

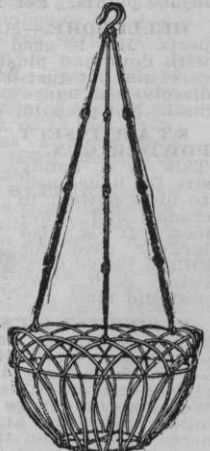
One 36-inch wire window shelf; six 5-inch wire window brackets; one 8-inch wire hanging basket; one hanging basket chain, and one bird cage hook, by express, not prepaid, for only \$1.75.



WIRE BRACKET,



No. 10.



WIRE HANGING BASKET

SULPHO TOBACCO SOAP.—For a cheap, effective, clean and harmless insecticide for amateur and professional growers this is unexcelled. Quickly exterminates all insect life on plants and flowers in and out of doors. Unsurpassed for rose bushes. For domestic purpose it rids the house of cockroaches, and is a superior wash for dogs and all animals. Prevents poultry lice. A trial will give highly gratifying results. Three-ounce cake, sufficient for 1½ gals. prepared solution, 10c; by mail, postpaid, 13c. Eight-ounce cake, sufficient for 4 gals. prepared solution, for 20c; by mail, postpaid, 28c.

WHALE OIL SOAP.—An excellent preparation for plants infested by vermin. Also used against fungus diseases and will keep trunks of trees from borers or other bark destroyers. Per pound, 25c; postpaid, 37c.

TYRIAN PLANT SPRINKLER.—Fine for house plants. You can without injuring plants or soaking earth, quickly and very effectively sprinkle them. Will keep foliage fresh and healthy and free from insects of all kinds. The bent neck enables you to spray the under sides of the leaves which are hiding places for insects. Each 75 cents, postpaid.

SCOLLAY SPRINKLERS.—Indispensable for floral work. Excellent for washing the foliage of house plants, and used for sprinkling clothes. Large, each \$1.00; small, 60c, postpaid.

BOWKER'S FOOD FOR FLOWERS.—A fertilizer made especially for plants; clean, free from offensive odor, and soluble in water, producing healthy plants and abundant blossoms to which it imparts brilliant color. A box sufficient for 20 plants for one year 25c, or postpaid 37c; small packages 15c, or postpaid 22c.

WALKER'S EXCELSIOR PLANT FOOD.—A concentrated fertilizer. Use by dissolving in water and apply in liquid form. Put up in tin to prevent loss of strength. Half lb. pkg. 15c, or postpaid 22c; 1 lb. (will make 20 gals. liquid), 25c, or postpaid 37c; 5 lbs. by express, not prepaid, \$1.20.

STERLINGWORTH PLANT TABLETS.—A highly concentrated food for plants put up in small tablets to be dissolved in water and used as needed. No. 1 pkg. (30 tablets) each 10c; No. 2 pkg. (100 tablets) each 25c; No. 3 pkg. (250 tablets) each 50c; all postpaid at prices named.

HAMMOND'S SLUG SHOT.—A combination of the most potent insecticides and soluble plant food. It destroys all insects injurious to house and garden plants, shrubs, trees, vines, potatoes, melons, cabbage, currants, vegetables and fruits of all kinds. This preparation, though poisonous to insects, does not injure the foliage in the least, nor does it render vegetables unfit for food. Not prepaid, 5 lbs. 35c, 10 lbs. 60c, 25 lbs. or more at 5c per lb., or postpaid, 1 lb. 22c, 5 lbs. 67c, 10 lbs. \$1.22.

CROW BRAND INSECT POWDER.—Best grade. Fresh and nice. It does not pay to use cheap, ordinary grades. Splendid for home use to kill cockroaches, ants and flies. By parcel post, ¼ lb. 22c, 1 lb. 62c, 5 lbs. \$2.37. By express, ¼ lb. 15c, 1 lb. 50c, 5 lbs. or more at 40c per lb.

FUMIGATING AND DUSTING POWDER.—Formerly sold under the name Tobacco Dust. Destroys rose bugs, lice, cut worms, vine bugs, tomato worms, cabbage lice and all parasites. Apply when foliage is wet. A complete fertilizer for plants and vines. Will not burn or injure plants. Per lb. 10c, postpaid 22c; 5 lbs. 25c, postpaid 62c.

HELLEBORE.—Mild poison which is used for destroying insect pests. May be used by dusting it over plants either pure or mixed with flour and plaster. If to be used pure, you should exercise care, and not dust it on too freely. If to be used as a liquid spray, dissolve one ounce of hellebore in 3 gals. of water. Cannot go by mail. Not prepaid, ¼ lb. 10c; ½ lb. 15c; 1 lb. 25c; 5 lbs. \$1.00.

STAR INSECT POWDER GUN.

This is a handy size for house use, to blow powder in cracks and crevices. It is also largely used for killing house-flies. Price each, 10c, postpaid 13c.

FLOWER POTS.—These prices per dozen are for the pots and saucers: 4-inch 60c, 5-inch 75c, 6-inch \$1.00, 7-inch \$1.50, 8-inch \$2.40, 9-inch \$3.00. We make no charge for packing or delivering at the depot here. Orders for these must amount to at least \$1.00. We have many styles of handsome pots, jardinières and vases and hanging baskets at extremely low prices.

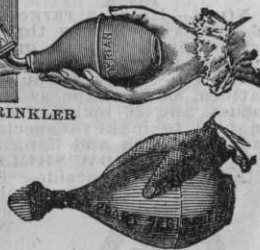
PAPER FLOWER POTS.

Made of heavy waterproof paper. Fine for growing vegetable plants, pansies, asters, etc. By using these you do not have to disturb the roots of plants when setting out in the open. 2¼-inch, per doz. 10c, or postpaid 13c; 100 40c, or postpaid 57c; 3-inch, per doz. 15c, or postpaid 22c; 100 60c, or postpaid 77c; 4-inch, doz. 20c, or postpaid 27c; 100 90c, or postpaid \$1.17.

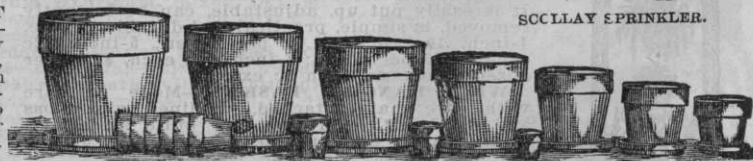
PLANT TUB.—Strong, well made, wooden tubs for large plants. Afford a permanent place for plants too large for ordinary earthen pots and are much more cleanly and easy to handle. Too heavy to mail. Price, 12-inch, each \$1.25; 15-inch, each \$1.75; 18-inch, each \$2.25; 21-inch, each \$2.75; 24-inch, each \$3.25.



TYRIAN SPRINKLER



SCOLLAY SPRINKLER.



OUR "SPRINGTIME" TULIP BED

See Illustration Back Cover Page

FOUR COLORS—100 BULBS—POSTPAID \$1.65.

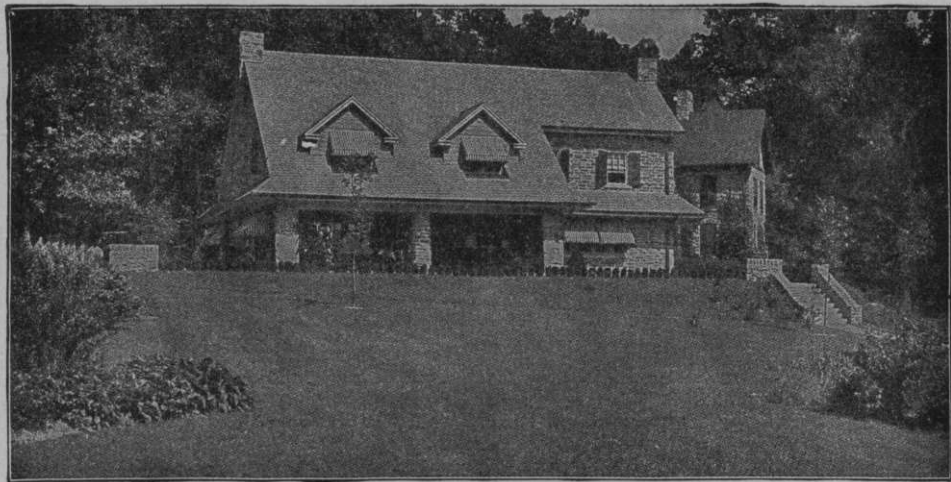
25 LaReine (White)

25 Artus (Scarlet)

25 Yellow Prince (Yellow)

25 Rose Gris de Lin (Pink)

Suitable for diamond, square, round or crescent bed, containing 24 square feet, or will contrast nicely if planted as border beds of hardy herbaceous plants, or for edging of walks or drives. In this collection we give you an extra bargain on choice named bulbs, as we purchased specially for this offer. This is first grade stock, sound, solid and heavy, and without extra care will produce beautiful flowers of large size and brilliant colors. For description of varieties see page 9.



LAWN GRASS SEED

Nature Sows Lawn Grass Seed in the Fall

"Thank God for Grass! No other Glory vies

With the refreshing glory of the grass;

Not e'en the blue of the o'er bending skies,

Nor fading splendor when daylight dies,

Can this sweet smile of living green surpass."

beds seems insignificant. How important it is then to plan for the best lawn obtainable! Considerable time may be saved by making your lawn in the fall, the ground at this season usually working up loose and mellow, and by sowing the seed in September or October, it will be well established before winter begins and make a beautiful green carpet over your ground very early in spring. Ask for circular, "How to Make a Lawn."

EVERGREEN MIXED LAWN GRASS SEED.—This is a mixture of the best varieties of grass seed suited for growing together and will make a beautiful, soft, velvety lawn of as handsome green as an emerald, and is formed of grasses which keep green from early spring all through the hot, dry summer weather until late in the fall. It comes up quickly (about two weeks) after seed is sown, and once up it spreads to cover the ground and is ready for the lawn mower in six to eight weeks. It roots deeply on any soil and forms a dense, thick turf. This mixture is made only by us from new crop, recleaned, pure seeds of the best varieties, well suited for even and permanent growth, as good as money can buy. Price per pound (will sow 400 square feet), 40c; 3 lbs., \$1.10, postpaid. By freight, per bushel of 15 lbs., \$3.60; 5 bushels or more at \$3.40 per bushel.

SUBURBAN HOME LAWN GRASS SEED.—Nice for lawns, but is of special value for parks and around country homes where it is not convenient to mow lawns frequently. Sow about 50 lbs. per acre. Per lb., 35c; 3 lbs., \$1, postpaid. By frt., bu. of 15 lbs., \$3.25; 2 bu. or more at \$3.10 per bu.

LAWN MOWERS and other lawn supplies. Ask for circulars and prices.

A nice velvety lawn adds more to the beauty of a place than any other adornment, and even the humblest home may be made attractive with such surroundings, while without a good lawn even the finest flowering plants and elegantly arranged

KENTUCKY BLUE GRASS.—Our stock is of the best grade of fancy cleaned, new crop, tested seed. Per lb. 30c; 4 lbs., \$1.00, postpaid. By freight, per bu. of 14 lbs., \$2.50.

WHITE CLOVER.—Makes a close turf and looks nice mixed with lawn grass. Per lb., 70c; 3 lbs., \$2.00, postpaid.

SHADY PLACE LAWN MIXTURE.—For sowing under shade trees; a combination of grasses, which grow naturally in the woods, and are of dwarf evergreen growth. Rake in a little air-slaked lime in such places before sowing as ground is sometimes "sour" in such spots. Per lb., 50c; 3 lbs., \$1.35, postpaid. By freight, per bu. (15 lbs.), \$4.25.

PEERLESS LAWN FERTILIZER.—You cannot expect your lawn to look fresh all ways when you are cutting a crop of grass from it every week. Lawn grass is a voracious feeder and requires fertilizer. Our Peerless Lawn Fertilizer is of the best quality, dry, finely pulverized and easy to apply. Use 10 lbs. for 1,000 square feet of lawn, or 400 lbs. per acre. Price per 10-lb. pkg., 60c; 25 lbs., \$1.00; 50 lbs., \$1.75; 100 lbs., \$3.00; 500 lbs., \$14.00.

BONE MEAL.—Ground fine and suitable for fertilizing lawns, flowers, etc. Useful to all planters. Price per 10-lb. pkg., 50c; 50-lb. pkg., \$1.25; 100-lb. bag only \$2.25.

BULBS^{AND} PLANTS

FOR FALL PLANTING



IOWA SEED COMPANY
DES MOINES, IOWA