

Golden Harvest Catalogue

OF
SEEDS
PLANTS
AND BULBS
FOR
FALL
PLANTING



IOWA SEED CO
DES MOINES, IOWA.

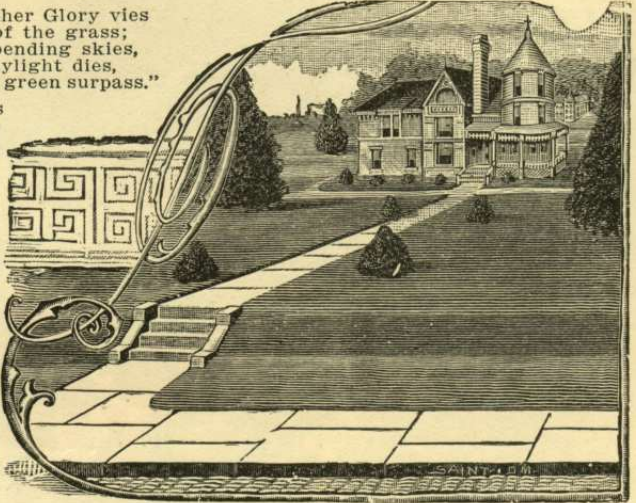
ONLY ONE
THE BEST
QUALITY

A Nice Lawn

ADDS MORE TO THE VALUE
AND BEAUTY OF A PLACE
THAN ANY OTHER
ADORNMENT.

"Thank God for Grass! No other Glory vies
With the refreshing glory of the grass;
Not e'en the blue of the o'er bending skies,
Nor fading splendors when daylight dies,
Can this sweet smile of living green surpass."

A nice velvety lawn adds more to the beauty of a place than any other adornment, and even the humblest home may be made attractive with such surroundings, while without a good lawn even the finest flowering plants and elegantly arranged beds seem insignificant. How important it is then to plan for the best lawn obtainable! Considerable time may be saved by making your lawn in the fall, the ground at this season usually working up loose and mellow, and by sowing the seed in September or October, it will be well established before winter begins and make a beautiful green carpet over your ground very early in spring. Ask for circular, "How to Make a Lawn."



Nature Sows Grass Seed in the Fall.

EVERGREEN MIXED LAWN GRASS SEED.—This is a mixture of the best varieties of grass seed suited for growing together and will make a beautiful, soft, velvety lawn of as handsome green as an emerald, and is formed of grasses which keep green from early spring all through the hot, dry summer weather until late in the fall. It comes up quickly (about two weeks) after seed is sown, and after once up it spreads to cover the ground and is ready for the lawn mower in six to eight weeks. It roots deeply on any soil and forms a dense, thick turf. This mixture is made only by us from new crop, re-cleaned, pure seeds of the best varieties, well suited for even and permanent growth, as good as money can buy. Price per pound (will sow 400 square feet) 45c; 3 lbs., \$1.25, postpaid. By freight, per bushel of 15 lbs., \$3.50; 50 lbs. \$11.00; 100 lbs. (will sow one acre), \$20.00.

CENTRAL PARK LAWN GRASS SEED.—Nice for lawns, but is of special value for parks and around country homes where it is not convenient to mow the lawns frequently. Sow about 50 lbs. per acre. Per lb. 40c; 3 lbs. \$1.00, postpaid. By freight, bushel of 15 lbs., \$3.00; 100 lbs., \$18.00.

SHADY LAWN MIXTURE.—For sowing under shade trees; a combination of grasses which grow naturally in the woods and are of dwarf evergreen growth. Rake in a little air-slaked lime in such places before sowing as ground is sometimes "sour" in such spots. Per lb. 50c; 3 lbs. \$1.35, postpaid. By freight, per bu. (15 lbs.) \$4.25.

TERRACE LAWN MIXTURE.—This is a mixture of such grasses as have strong, spreading roots, making a close turf which the heavy rains cannot easily wash out. Per lb. 50c; 3 lbs. \$1.35, postpaid. By freight, bu. (15 lbs.) \$1.35.

KENTUCKY BLUE GRASS.—Our stock of this is the best grade of fancy cleaned, new crop, tested seed. Much trouble was experienced this year in harvesting the blue grass in Kentucky because of wet weather and prices therefore rule higher than usual. Per lb. 35c; 3 lbs. \$1.00, postpaid. By freight, per bu. of 14 lbs. \$3.00.

WHITE CLOVER.—Makes a close turf and looks nice mixed with lawn grass. Per lb. 45c; 3 lbs. \$1.25, postpaid.

PEERLESS LAWN FERTILIZER.—You cannot expect your lawn to look fresh always when you are cutting a crop of grass from it every week. Lawn grass is a voracious feeder and requires fertilizer. Our Peerless Lawn Fertilizer is of the best quality, dry, finely pulverized and easy to apply. Use 10 lbs. for 1,000 square feet of lawn or 400 lbs. per acre, early in spring. Price per 10 lb. pkg. 60c; 25 lb. pkg. \$1.00; 50 lb. pkg. \$1.85; 100 lbs. \$3.50; 400 lbs. for \$12.00.

LAWN MOWERS and other lawn supplies. Ask for circulars and prices.

LAWN ORNAMENT COLLECTION.

An assortment of very early spring flowering bulbs which can be simply stuck in the sod on the lawn, and blossom when the grass grows green in spring. Offered in many shades of color and will brighten the grounds with beauty and bring the spirit of spring before the snows have ceased.

12 yellow, 12 white, 12 blue, 12 variegated Crocus; 24 single and double Snowdrops; 24 blue Scillas; 12 sweet scented Jonquills—a total of 108 fine bulbs postpaid for only \$1.08.



Forty-four Years Successful Business.

IOWA SEED CO.

"Seedsmen to the American People."

By this we mean not only native born Americans, but all residents of this country.

Des Moines, Iowa, August, 1909.

To Our Many Friends:

This catalogue is issued to offer to our customers and friends seasonable goods for fall planting in the open ground and for beautifying the home with a bright window garden of lovely flowers during the bleak winter months when we are shut in by snow and ice and freezing cold. We are better prepared to meet your wants in these lines than ever before and ask your patronage, promising to use every effort to send you good goods that will please with results.

We desire to thank you for past favors. Our list of customers is growing each season, the present year having been the most successful in our history, and we believe, from the many kind reports received from hundreds of our friends, that we have succeeded in our efforts to please.

ABOUT WARRANTING.—Nothing is sent out which we do not believe to be good in every respect, but we want it plainly understood that while we exercise great care to have all seeds, bulbs and plants pure and reliable, and also true to name, we do not give any warranty, express or implied. If purchaser does not accept goods on these terms and conditions, they are to be returned at once, and the money that has been paid for same will be refunded. No officer, agent or employee of this company is authorized to make any warranty whatsoever.

If you want any articles not offered in this catalogue we will be pleased to have your inquiries and will give them prompt attention. We suggest if you do not have a copy of our large catalogue for this year (1909) that you have one mailed to you, as it offers a full and complete line of merchandise for farmers, gardeners, horticulturists and flower lovers. It is had for the asking.

Some of our other Department Catalogues.

FARM SEEDS.—With this catalogue we are sending a separate farm seed list of such grains and grasses as are suitable for fall sowing. Our stocks this year are especially good and we solicit your orders for anything you may need in this line.

POULTRY SUPPLIES.—We carry a most complete line of all poultry supplies, including our own specially prepared foods for fowls, apportioned in such way as to afford a perfectly balanced ration. We issue a handsome 20-page illustrated catalogue devoted to this department which will be mailed free upon request.

BIRD DEPARTMENT.—We handle many varieties of parrots, canaries and cage birds and issue an illustrated catalogue of birds and supplies, and also issue regularly special bulletins describing the stock on hand at time of mailing. Send for this catalogue and the bulletins, which are mailed free, and you will be in position to secure the best offerings.

AQUARIA DEPARTMENT.—We offer in our Bird Catalogue several varieties of beautiful gold fish, together with globes, tanks and general aquaria supplies, and in a separate catalogue we offer a complete line of lovely seashells. These are shown true to nature by means of 300 specially prepared illustrations and the shell catalogue will be sent free if you want it.

CUT FLOWERS AND DESIGNS.—Orders for these goods should be addressed to Iowa Floral Co., Box 536, Des Moines, Iowa. If so addressed they do not get into the seed mail but go direct to the floral department for immediate attention the instant they are received. Promptness is absolutely essential in handling this class of business and the above address for your orders will save several hours. We issue a special catalogue illustrating set pieces, decorations, etc., and also issue a monthly price current quoting values. We will be pleased to mail these without cost to you and solicit your orders, as we are sure we can please you.

Our Complete Seed Catalogue for 1910

Will be ready January 1st, next.

It illustrates and describes all of the best new and standard sorts of Flower, Vegetable, Field and Farm Seeds, Flower Plants, Bulbs and Nursery Stock, as well as Lawn and Garden Tools, and Poultry Supplies of all kinds, of which we have the largest and most complete stock in the West. It also lists a great many sterling novelties which we have tested and found worthy to offer our customers. If you are a customer it will be sent without request, but if we should overlook you in any way and you do not get your copy by January 15th next, we suggest you write for one. We will also be pleased to mail it to any of your neighbors whom you think would be interested.

SPECIAL AUTUMN OFFERS

FROM THE
IOWA SEED COMPANY,
DES MOINES, IOWA.

HOLLAND BULBS

HYACINTHS

NARCISSUS

TULIPS, CROCUS

LILY OF THE VALLEY

LILIES OF THE FIELD

PAEONIES, IRIS

HARDY PHLOX

HERBACEOUS PLANTS

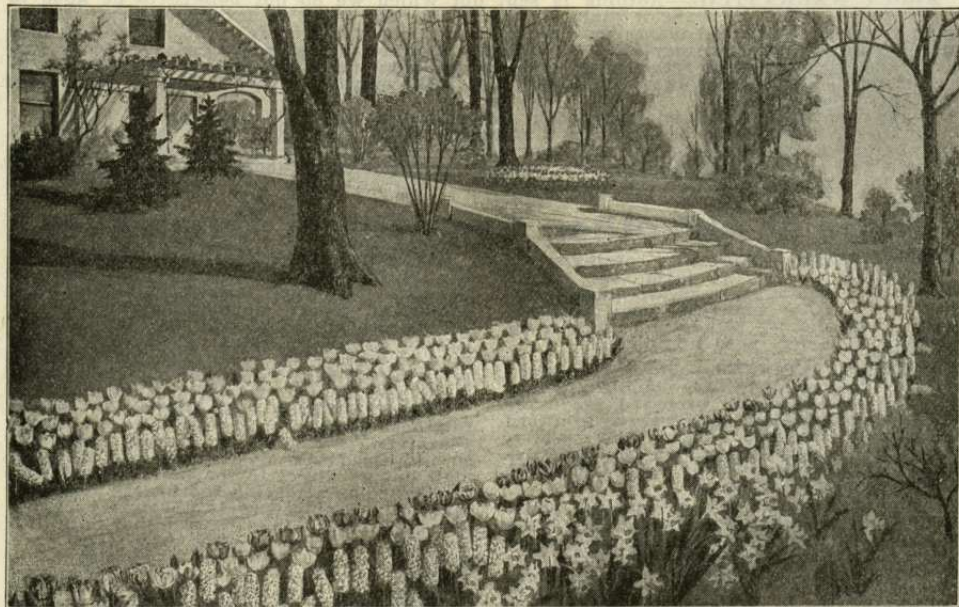
HARDY SHRUBS AND

VINES FOR FALL
PLANTING

ORDER EARLY.—Bulbs arrive from Holland about September 15th. The best time to order is just as soon as you receive this catalogue; then your order will be filled as soon as bulbs are received. Orders filled in rotation upon arrival of stock, and if yours is on file you are sure to receive choice fresh bulbs and get your order in full. Sometimes stock is exhausted later in fall and some items cannot be supplied to late customers. Please use the order sheet, as it makes it more convenient for us in filling orders. Terms are invariably cash with order, as we keep no book accounts in our mail order department, and the expense of sending goods C. O. D. is quite large. Postage stamps received as cash.

OUR PRICES.—Our constant aim is to make the highest quality the first consideration, and next to put our prices as low as good stock can be sold.

CHARGES PREPAID.—All Bulbs and Plants, except those noted, are sent prepaid by mail or express by the quickest and most direct routes unless ordered otherwise, and we guarantee their safe arrival.



ASPARAGUS FERNS

BEGONIAS

CARNATIONS

CHRYSANTHEMUMS

FERNS, GERANIUMS

LANTANAS, PALMS

ROSES AND

BASKET PLANTS

PLANT STANDS

FLOWER POTS

PLANT FOODS

AND SUPPLIES

Our Great "Bargain Bedding" Collection.

130 Fine Bulbs for only \$1.25, postpaid to you, each item packed separately and plainly marked for effective planting.

5 Single White Tulips	10 White Crocus
5 Double White Tulips	10 Yellow Crocus
5 Single Pink Tulips	10 Purple Crocus
5 Double Pink Tulips	10 Light Blue Crocus
5 Single Scarlet Tulips	10 Striped Crocus
5 Double Scarlet Tulips	10 Blue Scilla
5 Single Yellow Tulips	10 Snowdrops
5 Double Yellow Tulips	10 Scarlet Anemones
5 Single Violet Tulips	
5 Double Violet Tulips	

We have only about 1,000 of these collections and you should order now to insure being in time.

DUTCH BULBS.

AND WHAT CAN BE DONE WITH THEM.

The most beautiful and satisfying and the most easily grown of all our flowers, are those raised in the house and garden during the winter and spring months from "Dutch Bulbs," at a time when their beauty can best be appreciated because of the absence of other flowers. Nothing in the floral world surpasses the bulbous flowering plants in richness or purity of flowers, and their coloring ranges from the most delicate shades to the gorgeousness of Oriental splendor. Among these we find the delightfully fragrant and beautiful Hyacinths, the showy Tulips, the elegant and popular Narcissus, the stately Lilies, the pretty little Crocus, and many other equally handsome kinds. Most of these

bulbs are grown in Holland, although some are from France, Italy, China, Japan and the Bermudas. There is nothing prettier or more desirable than a window nicely arranged with these, and a very small assortment will fill the house with fragrance. All are of the easiest culture and no experience is required for their successful management; but they will give better returns for having the treatment advised in this book, and no one can fail

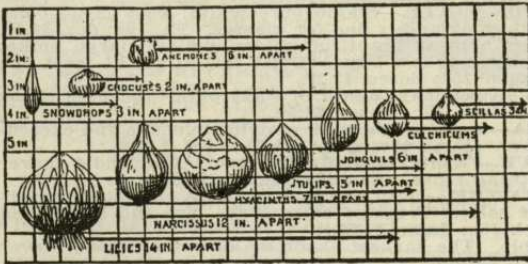
to have "good luck" whether grown out-doors or in the house. It has been well said that "A Dutch bulb can snap its fingers at the most stupid amateur and grow and bloom in spite of him whether the house be light or dark, hot or cold."

NATIONAL BANNER COLLECTIONS.

"RED, WHITE AND BLUE."

Hyacinths, 2 of each color	40c
Roman Hyacinths, 3 of each color	35c
Tulips, 12 of each color	65c
Crocus, 24 of each color	60c

All Four Banners for \$1.65.



The real secret of successful bulb culture lies in buying the very best bulbs. Months of daily care may be lavished upon an ordinary Hyacinth, and the result will be disappointing; and again there is no comparison between the pleasure one gets out of a bulb that bears one Daffodil and a bulb that produces three to five golden trumpets.

The other secret of bulb culture is to get a wonderful root growth before the stem begins to shoot up; light soil, plenty of water and a cool, dark place will accomplish this. Our bulbs are imported direct by us; are solid, heavy and possess the hardiness to resist wet and cold. We handle only the best varieties of each kind.

In the garden no single class of plants affords the pleasure that the hardy, spring-flowering bulbs do, but during the fall, as we see our summer favorites one by one falling and fading, we are liable to forget that this is the time to plant our bulbs in the garden for early spring blooming, and also to prepare our window gardens in the house for flowers during the winter months.

GOOD LUCK COLLECTION.

For Indoor Planting.

- | | |
|-------------------------|---------------------------|
| 1 Red Hyacinth | 1 Chinese Sacred Lily |
| 1 White Hyacinth | 12 Freezias |
| 1 Von Sion Narcissus | 1 Star of Bethlehem |
| 1 Paper White Narcissus | 12 Grape Hyacinths |
| 1 Porticus Narcissus | 10 Sweet Scented Jonquils |
- 40 Choice Bulbs Postpaid for \$1.00.



HYACINTHS.

The Hyacinth is undoubtedly the "Queen of Bulbous Flowers." It has been improved for centuries and there are thousands of varieties, but after personal inspection of the fields in Holland we offer the following named varieties as being suited for general culture and believe they will give satisfaction. Personally, we prefer the single flowered sorts.

FOR INDOOR PLANTING.—In Glasses.—Fill glass with pure soft water until the water touches bottom of the bulb, drop in a piece of charcoal to keep water from fouling, and place glass in a cool, dark place until the roots nearly fill the glass. Change the water if necessary to keep it pure. When fully established bring to light and sunshine. **In Pots.**—Use compost of sand, well-rotted cow manure and garden mould in equal parts. Plant one bulb in a four-inch pot. Set in cool, dark place about four weeks then bring to light and sunshine.

FOR OUTDOOR PLANTING.—Make beds a foot in depth, of compost outlined above, raised slightly above the surrounding surface for drainage. Plant bulbs six inches apart and when ground freezes cover with a few inches of leaves or coarse litter.

Iowa Seed Co.'s Best Named Varieties.

SINGLE VARIETIES.

GERTRUDE.—This is the most beautiful of all and is well illustrated by the accompanying cut. It is a single, bright red, with large, superbly shaped truss, compact and attractive in every way. Often has twin spikes. Each 15c; dozen \$1.50.

GIGANTEA.—Grows to enormous size, with broad spikes of bluish-pink color; very handsome. Each 15c; dozen \$1.50.

CZAR PETER.—Finest porcelain-blue; has large, perfect spike and color is unusually attractive. Each 15c; doz. \$1.50.

BARON VON TUYLL.—Single pure white; very large close spike, blooms early and is fine for glasses. Ea. 10c; doz. \$1.15.

IDA.—Color a most beautiful golden yellow; large spike; best of all single yellow sorts. Don't fail to get at least one of these. Each 25c; dozen \$2.25.

MORENO.—A beautiful flower of waxy pink. Splendid truss; large bells. Each 15c; dozen \$1.50.

FABRIOLA.—A pale light pink of delicate shade and exceedingly fragrant. Each 15c; dozen \$1.50.

GRANDEUR.—White, tinged with rose. A splendid flower with very strong truss. Each 20c; dozen \$2.00.

GRAND MAITRE.—Deep porcelain blue. A clear and beautiful shade of color. Truss of extra large size and a splendid flower. Each 15c; dozen \$1.50.

KING OF THE BLUES.—Blackish purple. The darkest shade we offer. A strong flower of good quality, valuable for contrast as it cannot fail to attract the eye. Ea. 20c; doz. \$2.

DOUBLE VARIETIES.

BOUQUET TENDRE.—A beautiful double flower of deep crimson color. Best double red we know. Large bulbs, each 12c; dozen \$1.25.

GOETHE.—Large, fine truss of handsome citron yellow. Each 20c; dozen \$2.00.

BOUQUET ROYAL.—Fine light pink or bluish. Extra large spike and very beautiful flowers. Each 12c; dozen \$1.25.

LOKESBERG.—Light blue; large spike. Color of this Hyacinth exceptionally fine. Ea. 15c; doz. \$1.50.

LA TOUR D'AUVERGNE.—Very early flowering, and the best of all double whites. Flowerets large and wax-like and spikes of immense size. Very early and the finest double Hyacinth for pots. Each 12c; dozen \$1.25.

RAINBOW HYACINTH COLLECTION.

Seven shades of beautiful colors. Seven of the choicest named sorts. Seven fine bulbs, extra large, sound and sure to produce satisfactory flowers in the house.

One each, Baron Von Tuyl (white), Gigantea (blush pink), Gertrude (bright red), Ida (golden yellow), Goethe (citron yellow), Czar Peter (light blue), Grand Maitre (dark blue). Seven choicest bulbs. You cannot buy better. Postpaid for \$1



RAINBOW HYACINTHS.

GERTRUDE HYACINTH.

HYACINTHS.---[Continued.]**Choice Unnamed Sorts in Separate Colors**

To those who do not wish to pay the highest price for best named Hyacinths, we especially recommend this grade for both house and garden culture. Though not so large as the named varieties, they are all choice, selected bulbs and will produce large, symmetrical trusses; especially fine for bedding.

SINGLE VARIETIES.

	Each	Per Doz.
Single Pure White	8c	\$0.80
Single Rose and Pink.....	8c	.80
Single Red	8c	.80
Single Light Blue	8c	.80
Single Dark Blue	8c	.80
Single Yellow	10c	1.00
Single all colors mixed.....	7c	.75

DOUBLE VARIETIES.

	Each	Per Doz.
Double Pure White	8c	\$0.80
Double Rose and Pink.....	8c	.80
Double Red	8c	.80
Double Light Blue	8c	.80
Double Dark Blue	8c	.80
Double Yellow	10c	1.00
Double all colors mixed.....	7c	.75

**BANNER HYACINTHS.****WINDOW BOX HYACINTH COLLECTION.**

1 Single White, 1 Double White, 1 Single Pink, 1 Double Pink, 1 Single Red, 1 Double Red, 1 Single Light Blue, 1 Double Light Blue, 1 Single Dark Blue, 1 Double Dark Blue, 1 Single Yellow, 1 Double Yellow—12 bulbs, all different, from our best grade of unnamed Hyacinths, giving a wide range of color and beauty—postpaid for only 75 cts.

ROMAN HYACINTHS.

The florists' favorite. Slender and graceful about one-half the diameter of ordinary Hyacinths. Romans are the earliest bloomers of all fall bulbs and may be readily grown by the most inexperienced in pots of soil or in water and pebbles. Planted in September they flower from Thanksgiving to Christmas time and a succession may be had

**ROMAN HYACINTHS.**

by potting the bulbs at intervals. Bulbs throw up from two to seven spikes of bloom which follow each other in flowering. Three bulbs may be placed in a five-inch pot. Very fragrant. Do not forget these when making up your order.

PURE WHITE.—The most popular of all. Every window should have several pots of these. Exquisite bells, white as the driven snow and pleasantly fragrant. Never fails to bloom. Each 5c; dozen 55c.

LIGHT BLUE.—Sky blue bell. About ten days later than the white, with which it forms a fine contrast. A great bloomer. Each 5c; dozen 50c.

DELICATE ROSE.—Beautiful, clear, bright rosy pink color. A charming and delicate tint. Should be grown by everyone who loves flowers. Ea. 5c; dozen 50c.

CANARY YELLOW.—Beautifully shaped bells in airy, graceful spikes; in color a soft, pleasing canary yellow. Really fine. Ea. 10c; doz. \$1.00.

THE FOUR ROMANS.

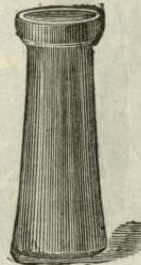
One each of the four colors named above, postpaid, for only 18 cents.

SPECIAL QUANTITY OFFER.

Bulbs in this offer are to be shipped at customer's cost of transportation and if you will pay express charges you can order at following low prices: Per 100 First Quality, bedding, Single Hyacinths (your choice of color)...\$4.50 Second Quality, bedding, Single Hyacinths (your choice of color)... 3.75

**TYE'S PLAIN.****Hyacinth Glasses.**

Permit only base of the bulb to rest in water. Delightful ornaments when Hyacinth is in bloom. Amaryllis Formosissima and a few other bulbs may be grown in the same way. Can only be sent by express at purchaser's expense. Each 20c.

**TALL PLAIN.**

EARLY TULIPS.

A most gorgeous and satisfactory spring flower, and nothing is more showy on the lawn than a nice bed of Tulips, blooming, as they do, so early in the spring. They are unsurpassed in brilliancy of color. Their ease of culture, combined with beauty of form and gorgeous coloring, makes them the most popular bulbs for spring blooming, and for winter flowering in the greenhouse and window garden they are incomparable. For distance and depth of planting see diagram, page 2. Many planters use Snowdrops, Scillas or Crocus to plant between the Tulips in fall-planted beds, so that they may have earlier flowers than furnished by the Tulips and a longer display of blossoms in one bed. It is suggested also that early and late flowering Tulips planted alternately in a bed will furnish Tulips in bloom for fully thirty days in spring. Others set pansy plants between the Tulip bulbs and after frost cover the beds so that the pansies survive and come into bloom in spring just as the tulips are fading away.

Many prefer to destroy the Tulip bed as soon as the blooms have passed and set the bed to Geraniums or other summer bedding plants. No matter in what manner you choose to use the Tulip it will certainly give you abundant returns in flowers for the small sums invested.



SINGLE, DOUBLE AND PARROT TULIPS.

Named Tulips, Postage Paid.

Single Early Varieties.

BELLE ALLIANCE.—Scarlet flower. Each 4c; dozen 45c; 100 for \$3.00.

COLEUR PONCEAU.—Rosy crimson, and tipped white. Ea. 3c; doz. 30c; 100 for \$2.00.

CRIMSON KING.—Showy, having large bright crimson flowers with yellow base. Each 3c; dozen 30c; 100 for \$2.00.

DUCHESS OF PARMA.—Orange - yellow, shading to terra cotta, with fiery yellow and brown shadings. Ea. 3c; doz. 30c; 100 for \$2.00.

COTTAGE MAID.—Carmine pink, center of petals feathered with white, base yellow. Each 4c; dozen 40c; 100 for \$3.00.

YELLOW PRINCE.—Bright yellow. Each 4c; dozen 40c; 100 for \$3.00.

LA REINE.—White, sometimes tinged with rose. Each 3c; dozen 30c; 100 for \$2.00.

SILVER STANDARD.—White, feathered crimson. Each 4c; dozen 40c; 100 for \$3.00.

GOLDEN STANDARD.—Bright red with golden stripes. Each 6c; dozen 60c; 100 for \$4.00.

KEIZERSKROON.—Rich crimson with a broad gold margin. Each 5c; dozen 50c; 100 for \$3.50.

SINGLE EARLY FINE MIXED.—All colors. Each 3c; dozen 25c; 100 for \$1.50.

IOWA SEED CO.'S BEST SINGLE MIXED.—From very best named varieties. Each 4c; dozen 35c; 100 for \$2.50.

Double Early Varieties.

LA CANDEUR.—Pure white. Beautiful with Rex Rubrum. Each 4c; dozen 40c; 100 for \$3.00.

REX RUBRUM.—A brilliant double scarlet. Each 4c; dozen 45c; 100 for \$3.50.

DUKE OF YORK.—Carmine rose, edged broadly with white, suffused rose. Each 4c; dozen 35c; 100 for \$2.50.

LA CITADELLE.—Purplish red, bordered yellow. Each 4c; dozen 35c; 100 for \$2.50.

TOURNESOL.—Orange scarlet with broad yellow tips and yellow base. Ea. 5c; doz. 50c; 100 for \$3.50.

MURILLO.—(Albino).—Blush white, and shaded rose. Each 5c; dozen 50c; 100 for \$3.50.

DOUBLE EARLY FINE MIXED.—An excellent assortment. Each 3c; dozen 25c; 100 for \$1.50.

IOWA SEED CO.'S BEST DOUBLE MIXED.—Made from choicest named varieties. Each 4c; dozen 35c; 100 for \$2.50.

QUANTITY PRICE ON BEDDING TULIPS.

Customer to Pay Cost of Transportation.

	Per 100
Single White\$1.50
Single Rose Pink1.40
Single Crimson1.50
Single Scarlet1.35
Single Yellow1.35
Single Orange1.40
Double White2.00
Double Rose Pink1.85
Double Crimson2.00
Double Scarlet1.75
Double Yellow1.75
Double Orange1.85



BELLE ALLIANCE TULIPS.

TULIPS; Late or May-Flowering.

Late Tulips are specially valuable, blooming from middle of May till after Decoration Day. Taller than the early varieties; their long, graceful stems and beautifully-formed blossoms place them among our most highly prized spring flowers; keep a long time after being cut.

PARROT TULIPS.—A bed of these in bloom is a wonderful sight, paying a hundred fold for all the care bestowed upon them. Flowers are very large and showy; petals are fantastic in form, being so toothed and corrugated as to resemble a parrot's beak. Yellow, crimson or white, feathered with green, gold and scarlet. Bloom late; every garden should have a bed. Each 3c; dozen 30c; 100 for \$2.00.

SINGLE LATE MIXED.—Contains a large number of choice varieties. Each 3c; dozen 30c; 100 for \$2.00.

Pattern Diagrams for Tulip Beds.

We illustrate and offer as specials a few bed collections of choice named varieties of early flowering Tulips which will be found easy of execution by our patrons. The bulbs offered for these beds are from first quality named sorts that will show no variation but will appear of solid colors. The cheaper bulbs offered in quantity by color or on the previous page may be used for these beds but will not give such brilliant results as will the named sorts here offered.

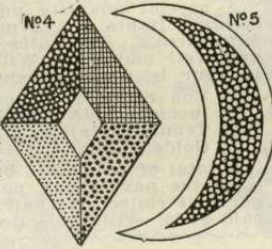
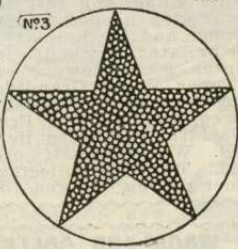
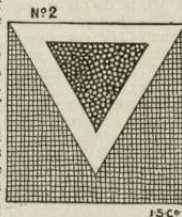
BED NO. 1.—This elliptical bed is eight feet long and five feet wide; white belt in center; red and yellow on either side; 55 Crimson King, 40 La Reine, white, 55 Yellow Prince, 150 bulbs, not prepaid, for \$2.50. Prepaid for \$3.00.

BED NO. 2.—"Flag" bed is six feet square. Tulips selected so that pink are short, white medium, and red tall; 25 Keizerskroon, red; 40 La Reine, white; 85 Cottage Maid, pink. 150 bulbs, not prepaid, \$3.25. Prepaid for \$3.75.

Bed No. 3.—The Star and Circle bed, six feet in diameter, requires 225 bulbs. Star is red, and purchaser may select either white or orange for the circle; 100 Crimson King and 125 La Reine, white, or 125 Duchess of Parma, orange yellow. 225 bulbs, not prepaid, \$3.75; prepaid \$4.25.

BED NO. 4.—The Diamond bed is eight feet long and five feet wide; 40 Cottage Maid, pink; 40 Yellow Prince; 40 Keizerskroon, yellow and scarlet; 40 Crimson King, 20 La Reine, white. 180 bulbs, not prepaid, \$3.75; prepaid \$4.25.

BED NO. 5.—The Crescent bed measures six feet through its greatest length and two feet at thickest point. 75 La Reine, white; 60 Crimson King. 135 bulbs, not prepaid, \$2.15; prepaid for \$2.50.



DOUBLE LATE MIXED.—Very nice to grow with the above. Each 4c; dozen 40c; 100 for \$2.50.

BYBLOOM TULIPS.—Large, late May-flowering Tulips; extra large flowers on tall stems. The ground coloring of these is white with stripes, blotches and markings of crimson, pink, scarlet, rose, violet, lilac and shades of blue. Striking and effective for late flowers and especially fine for cut flowers. Mixed colors, per dozen 30c; per 100, \$2.00.

BIZARRE TULIPS.—Similar in habit and manner of growth to the Byblooms, but the ground color of the flowers is yellow. Harmonize finely with the above. Per dozen 30c; per 100, \$2.00.

GIANT DARWIN TULIPS.—These generally are self or solid colored flowers, though many are shaded at base or top of petals. They are late or May-flowering and flowers are produced on very long stems, sometimes fully two feet, and are therefore especially effective for decorative cut flowers. Colors range through all the various shades from white to almost black. Mixed colors. Per dozen 40c; per 100 \$3.00.

COTTAGE GARDEN TULIPS.—The most popular strain of Tulips at the present because they are perfectly hardy and can be planted among hardy herbaceous beds and borders where they may be allowed to remain without being disturbed for a number of years. They present all the shades and markings found in the other classes of Tulips; are late flowering and will certainly prove satisfactory. Per dozen 35c; per 100 \$2.50.

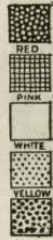
MEMORIAL DAY TULIP BED.

One dozen Giant Darwin Tulips for the center; two dozen Byblooms and two dozen Bizarres for the center, and one hundred Parrot Tulips for the outer rows. 160 bulbs that in ordinary seasons will be in full bloom on Memorial Day, with a splendid show of color. Postpaid for only \$3.00.

CEMETERY COLLECTION OF TULIPS.

This collection is offered to such of our customers who would like to have a fine show of lovely flowers on the cemetery lot at Memorial Day. Just enough for a small bed planted closely.

6 Giant Darwin, 12 Byblooms, 12 Bizarres, 12 Parrot Tulips, postpaid for \$1.00.



POLYANTHUS NARCISSUS.

PAPER WHITE GRANDIFLORA.—These beautiful, graceful Narcissus can be made to bloom in December. There is no more satisfactory bulb for house cultivation; its clusters of snow-white flowers are deliciously fragrant. This variety is perhaps more largely forced for cutting than any other, tons of them being used for the large flower markets of the world. Grows readily in water, if treated same as Chinese Sacred Lily.

Mammoth Bulbs.—Larger than hyacinths, exceptionally solid and heavy. Sure to give satisfaction. Each 6c; dozen 60c; 100 for \$4.

First Size Bulbs.—Such as are usually grown by florists and amateurs; of satisfactory size and quality. Each 5c; dozen 40c; 100 for \$3.00.

CHINESE SACRED LILY.

This is now the most popular of all bulbs for winter blooming; always satisfactory and of the easiest culture. It is a variety of Polyanthus Narcissus grown by the Chinese to decorate their sacred temples or Joss Houses on their New Year's Day, which occurs in February. They produce a profusion of bloom in a short time, usually not more than four to six weeks from time of planting. The foliage is luxuriant and of a dark green color, surmounted by a wealth of large, satiny white, fragrant flowers with golden yellow cup.

CULTURE.—Being partly aquatic, this plant must have plenty of water. If grown in soil, make it light and sandy, but they are usually grown in vases or dishes of water. Put an inch of gravel in the dish, set the bulbs on this and put gravel around them to keep from falling over; fill dish with water and set in a dark closet for several days until the roots start freely; then bring to light and keep in any ordinary living room. A dozen bulbs started in this way at intervals will give a succession of bloom all winter. The bulbs offered by us are large, solid, and well matured. They can be relied upon to be the true Chinese, and not inferior Bermuda grown stock. Price 15 cents each; \$1.40 per dozen, postpaid; not postpaid, each 10 cents, dozen \$1.00.



PAPER WHITE GRANDIFLORA NARCISSUS.



CHINESE SACRED LILY.

CHRISTMAS COLLECTION.

The bulbs in this offer are for early planting in September and will furnish fine, fragrant flowers, and handsome table decorations during December and the holiday period. Planted in October or later they will come into bloom during the winter when flowers are wanted. Consists of 6 Paper White Grandiflora Narcissus, 2 Chinese Sacred Lilies, 12 Roman Hyacinths (four different colors), 12 choice Freezia and 12 dainty Grape Hyacinths—44 bulbs in all for only \$1.50, postpaid. Will send half collection for 85 cents, postpaid. Two full collections sent by express, customer paying charges, for only \$2.50.

WOODLAND COLLECTION NARCISSUS.

A special quantity offer of varieties of Narcissus suitable for permanent plantings and for naturalizing. The bulbs offered are strong, heavy and well matured. Will add grace and beauty to your borders and shrubbery in early spring.

12 Von Sion	12 Bulbocodium
12 Incomparable Double	24 Poeticus
12 Trumpet Major	24 Poeticus Ornatus
12 Golden Spur	12 Jonquils

A total of 120 choice bulbs (for description and color see next page), postpaid for only \$3.00; or one-half collection (half quantity of each), postpaid \$1.65. Full collection, not prepaid, \$2.70.



VON SION NARCISUS.

DOUBLE VON SION.—The first of the list in popularity. It is the true Daffodil, of beautiful golden yellow color which is so highly prized among lovers of spring flowers.

Double Nozed Bulbs.—Mammoth bulbs (larger than a hyacinth) which will produce two or more flower stalks; solid and heavy. Each 6c; dozen 60c; 100 \$4.00.

First Size Bulbs.—The ordinary first grade containing many double nozed bulbs, are large and strong and will give satisfaction. Each 4c; dozen 40c; 100 for \$3.

Second Size Bulbs.—A good grade, not so large or strong as the above, but satisfactory for outdoor planting. Each 3c; dozen 30c; 100 for \$2.25.

EMPEROR.—Extra large flowers, both trumpet and petals yellow. Tall and fine. Bulbs very large, strong and solid. The most splendid of single yellow Narcissus for indoor growing. Each 6c; dozen 60c; 100 \$4.00.

EMPRESS.—Extra large flowers, trumpet yellow, petals white. Fit companion for the Emperor with all its stateliness and beauty. Each 6c; doz. 60c; 100 \$4.00.

GOLDEN SPUR.—Similar to Emperor in color and habit, but more free flowering. The variety most used by florists for winter forcing. Will often produce three to five flowers from each bulb. Each 6c; dozen 60c; 100 for \$4.00.

TRUMPET MAJOR.—Single yellow trumpet, yellow petals. A splendid low priced Narcissus for either forcing or outdoors. Each 3c; doz. 30c; 100 for \$2.25.

PRINCEPS.—Single yellow trumpet with sulphur petals. Desirable for either house or field culture. Each 3c; dozen 30c; 100 for \$2.25.

BULBODIUM.—(Hoop Petticoat).—A dwarf; very free bloomer, producing six to twelve large, rich golden yellow, trumpet-shaped flowers. Hardy. Used for borders and first rows in mass planting. Each 5c; dozen 50c; 100 for \$3.50.

ALBA PLENO ODORATA.—(Double Poeticus).—Each 4c; dozen 30c; 100 \$2.00.

POETICUS.—("The Pheasant's Eye" or "Poet's Narcissus").—Pure white flowers with orange cup edged with crimson; splendid flower. Hardy and fine for garden planting. A beautiful and popular variety, specially desirable for landscape planting. Each 3c; dozen 25c; 100 for \$1.50.

POETICUS ORNATUS.—Similar to above but cup is a shade lighter color, and this variety blooms somewhat earlier. Is preferred to the above for indoor planting. Each 3c; dozen 30c; 100 for \$2.00.

JONQUILS.—Belong to the Narcissus family, and are treated in the same manner. Quite hardy. Produce large, golden and deliciously fragrant flowers. For indoor planting, two or three bulbs should be put in a 4-inch pot. Fine for planting with the larger flowered Narcissus in landscape, or border work. Each 3c; dozen 30c; 100 for \$2.25.

NARCISUS or DAFFODILS

The Narcissus listed on this page are hardy sorts suitable for outdoor growing and can also be used for indoor planting. They can be grown with success in permanent plantings and will continue to flower year after year without attention. Are recommended by the foremost authorities for ornamental plantings in borders or shaded situations and give delightful effects in woodland landscapes.

INCOMPARABLE DOUBLE.—(Butter and Eggs).—Full double of rich yellow and orange. Very rich colors and a grand variety for growing in the house or outdoors. Each 5c; dozen 50c.



IN A WOODLAND GLADE.

NATURALIZED NARCISUS.

FREESIA—(*Refracta Alba*).—One of the daintiest of flowers for conservatory or window garden is well shown below. Color is white with yellow blotched throat; quite fragrant; a free bloomer and will keep for two weeks in water after cutting. If planted early can be forced to bloom by Christmas. Six or eight bulbs should be planted in a 4-inch pot. Not hardy. First size bulbs, each 5c; dozen 45c. Second size, each 3c; dozen 25c.

PURITY FREEZIA.—A splendid new pure white variety of this beautiful flower. Absolute purity of color and extra large flowers, together with splendid perfume, make it very desirable. Each 6c; dozen 50c.

ORNITHOGALUM ARABICUM—(The Great Flowered or Arabian Star of Bethlehem).—A showy and beautiful flower, sweetly odorous. The blossoms are pure white with a black center, borne on stems one to two feet in height; succeeds either outdoors or in pots. Excellent for forcing and largely used by commercial florists for this purpose. Easily cultivated. Each 10c; dozen 90c.

SNOWDROP.—This is one of the daintiest of early spring flowers—the advance agent of April showers and summer suns. Very desirable to plant with Crocus and Scilla. Bulbs are small and should be planted in clusters of ten or twelve to secure best effect. Single, dozen 15c; 100 for \$1.15, postpaid. Double, FREEZIA REFRACTA ALBA. Dozen 25c; 100 for \$1.75, postpaid.

SCILLA—(*Siberica*).—Comes into bloom with the Crocus and Snowdrop. A beautiful, rich blue, bell-shaped flower, borne on graceful spikes; very showy and attractive as pot plants, requiring same treatment as Hyacinth. Each 4c; dozen 35c.

CROCUS.

The lovely little Crocus is one of the first flowers that peep through the snow to announce the approach of spring. For massing in beds, for planting in clumps in the grass or for edging beds of other bulbs, these beautiful and earliest of spring-flowering bulbs are unexcelled. Should be planted about the same time as Hyacinths. To force in the house, plant five or six to a 4-inch pot.

White, Mixed Shades Yellow, Mixed Blue and Purple, Striped and Variegated, doz. 15c; 100 for 90c. Cloth of Gold, doz. 15c; 100 \$1. Mammoth Yellow, doz. 20c; 100 for \$1.50. All colors mixed, doz. 10c; 100 for 60c.



CROCUS.



SNOWDROPS.



ANEMONES.

ANEMONES.

These beautiful spring flowers are adapted for garden or pot culture. In the garden, plant in any good, rich garden soil, five or six inches apart, in clumps or masses, and before the ground freezes cover with leaves or manure for winter protection; for house culture, three or 4 bulbs may be planted in a 6-inch pot; keep moderately cool and give little water till plants appear.

Single Mixed....Ea. 5c; doz. 50c

Double Mixed....Ea. 5c; doz. 50c

ALLIUM.—Dainty white star-shaped flowers; of easiest culture, either out doors or in the house. Doz. 20c; 100 for \$1.25.



Double, FREEZIA REFRACTA ALBA.



ORNITHOGALUM ARABICUM.

SURPLUS BULB COLLECTION.

\$1.50 for \$1.00.

It is impossible for us to know just how many of any certain kinds of bulbs will be required to fill our orders. We must purchase by estimate and it always happens that we get too few of some things and too many of others. To dispose of surplus bulbs we will send after Oct. 1st bulbs to catalogue value of \$1.50 for \$1.00. The only reservation is that we select the bulbs sent. We cannot promise in advance just what will be sent but will guarantee to send more value for your money than you can get in any other way. \$1.50 for \$1.00.

**CINNAMON VINE.**

A beautiful climber possessing the rare quality of emitting from its flowers the delightful odor of cinnamon. Perfectly hardy, the stem dying down in autumn, but growing again so rapidly as to completely cover trellis or arbor very early in the season; most desirable climber. We furnish the large tubers, postpaid, for 10 cents; 3 for 25c; doz. 65c.

GLADIOLUS.

The varieties here named can be planted in the fall for spring flowers, needing only moderate covering of straw during winter. They can also be planted in pots in the house for winter flowers and are very graceful and of great beauty.

BRIDE.—A lovely pure white flower, softly fringed and showing soft pink markings on petals; of the most graceful habit. Blossoms all open at once, making an ideal cut flower. Ea. 3c; doz. 25c; 100 \$1.

BLUSHING BRIDE.—This beautiful sort is like the above in all but ground color, which is delicate pink relieved with spots of brilliant carmine red. Each 4c; dozen 30c; 100 for \$2.00.

TUBEROSE.

EXCELSIOR PEARL.—A greatly improved variety, having short stem, and long spike filled with beautiful, large, perfect double flowers of most delicious fragrance. Its spikes often bear 30 to 50 flowers, remaining in bloom for a long time. They are always wax-like, are pure white and unsurpassed for buttonhole bouquets. Not hardy, but can be grown in a warm room during the winter; but they are usually started in the spring. Don't fail to order a few. Mammoth bulbs each 6c; doz. 60c. Choice large bulbs, postpaid, each 5c; doz. 40c; smaller bulbs 20c per dozen, \$1.00 per 100, postpaid.

AMARYLLIS.

FORMOSSISSIMA.—(Jacobean Lily).—A quaintly shaped beautiful flower of a grand dark scarlet; blooms freely; forces well and can be grown in water like the Hyacinth; if the bulbs are kept dry during winter, they can be planted in the open ground in the spring, and will flower during the summer. Not hardy, but the rare beauty of the flower well repays the care given. Ea. 15c; doz. \$1.50.

JOHNSONI.—(Bermuda Spice Lily).—A very popular variety, wine red, with a white stripe down each petal; an early and abundant bloomer and a specially robust grower. Not hardy. Bulbs 50c each.

ATAMASCO.—Pretty pink and white flowers. Bulbs 5c each; 50c dozen.



BLUSHING BRIDE GLADIOLUS.

**OXALIS.**

DOUBLE YELLOW.—This new variety is well shown in engraving and makes a most attractive plant for hanging baskets, vases, etc. Several bulbs planted together will make a grand showing. Not hardy. Each 5c; dozen 45c.

BERMUDA BUTTERCUP.—Fifty flower spikes have been produced by a well-grown plant and as many as 1,000 flowers in a season. Cultivation is easiest possible; everyone is sure to succeed with it. Not hardy. Each 5c; doz. 45c.

BOWIEI.—Profuse bloomer; flowers brilliant carmine rose. Each 4c; dozen 35c.

GOLDEN STAR.—(Ortgiesi).—A shrubby plant, about 12 inches in height, loaded with clusters of golden star-shaped flowers. Each 15c.



EXCELSIOR PEARL TUBEROSE.

BEAUTIFUL LILIES.

Nothing can surpass the Lily in beauty, purity and stately grandeur. They thrive best in well-drained, loamy soil, made rich with thoroughly-rotted cow manure, and about an inch of sand should be placed under and over the bulbs when setting. Lilies should be planted in the fall when possible, as they give much better satisfaction. The *Harrisii* is planted in pots for blooming at Easter; the other varieties are all hardy.

HARRISII—(The Bermuda Easter Lily).—This magnificent Lily is the best of all varieties for winter forcing; the mammoth trumpet-shaped flowers four to six inches in length, are pure waxy white and delicately fragrant. After potting, it should be kept in a cool place until a strong root growth is secured, and then changed to a larger pot. Very beautiful and expressive. Each 15c; 3 for 40c; dozen \$1.45.

LONGIFLORUM—(Easter Lily).—This mammoth white trumpet lily, with flowers 4 to 5 inches long, is one of the best lilies for winter blooming, because its grand trumpet-shaped flowers which give forth a delicate perfume, are wonderfully beautiful and expressive. When planted in the open ground they should be protected during the winter. Each 20c; 3 for 50c.

AURATUM—(Japanese Gold Banded Lily).—This is justly entitled to the name often given it—The Queen of Lilies. The immense flowers are produced in great profusion and are deliciously fragrant. The large white petals are thickly spotted with rich chocolate crimson, and have a bright golden yellow band through the center. Each 20c; dozen \$1.75; mammoth bulbs, each 30c, dozen \$2.75.

SPECIOSUM ALBUM.—Has large white flowers of great substance, and beautifully recurved. Each 20c; 3 for 50c.

CANADENSE.—A handsome native variety having drooping bell-shaped yellow and red flowers. Ea. 15c; doz. \$1.25.



EASTER LILY.



LILY COLLECTION.

One nice bulb each of the Auratum, Rubrum, Album, Longiflorum and Melpomene lilies for only 75c, postpaid.



SPECIOSUM RUBRUM.—These are perhaps the most popular Lilies grown, being easy of cultivation, and produce large pinkish-red flowers of delicate beauty and strong stems; height from 2 to 4 feet; blooms in August. Ea. 15c; 3 for 40c.

MELPOMENE.—One of the most beautiful of the Lily family; frosted white and spotted, clouded and bearded with pinkish crimson. Petals recurved and widely bordered. Each 20c; 3 for 50c.

CANDIDUM.—The old-fashioned pure white garden Lily. Very hardy. Flowers snow white with very heavy stamens and sweet fragrance. Bears from three to twenty blossoms. This variety must be planted in the early autumn to succeed well, as it makes its leaf growth at once after planting and prepares itself for early blooming. It is beautiful, set in clumps of about a dozen, or in rows for a permanent border. Each 12c; doz. \$1.20. Mammoth bulbs, each 20c; doz. \$2.00.

DAY LILY.

WHITE—(Funkia).—A very beautiful plant for partly shady places. Large, round, heart-shaped leaves, clusters of fragrant lily-shaped white flowers. Each 15c; dozen \$1.50.

BLUE.—Like above only flowers are of a lovely blue color, borne on tall spikes. Each 10c; dozen \$1.00.

VARIEGATED.—Beautifully mottled dark green and pure white leaves, lilac flowers. Each 15c; dozen \$1.50.

LILIES.---(Continued.)

ORANGE LILY.—(*Hemerocallis Demorteri*).—Similar to the Lemon Lily, but of fine orange color. A bed of these and Lemon Lilies intermingled will give a most pleasing effect and a wealth of blossoms available for table decorations or bouquets. We wish we might persuade all our flower loving customers to try the two Lilies mentioned. Each 10c; dozen 75c.

LEMON LILY.—One of the handsomest flowers for garden culture. It is not a true Lily, as the bulb is of a different shape, but the flower is very much like the *Lilium Speciosum* in form and about 3 inches in diameter. Color is a clear lemon yellow of very bright, pleasing appearance. They have also a most delightful lemon fragrance. There seems to be almost no limit to amount of bloom produced. Each 15c; dozen \$1.50.

TIGER LILIES.

TIGRINIUM SPLENDENS.—An improved Tiger Lily growing sometimes 6 feet high, and producing large pyramids of orange red flowers spotted with black. Each 10c; dozen \$1.00.

TIGRINIUM.—Old form of Tiger Lily. Each 8c; dozen 75c.

DOUBLE TIGER LILY.
—A double form of old Tiger Lily. Flower is densely double, orange red, spotted with black. Blooms freely. Ea. 15c; doz. \$1.35.



DOUBLE TIGER LILY.



LEMON LILY.



CORAL LILY.

TENUIFOLIUM.—The lovely Coral Lily of Siberia. The brightest of all Lilies, of shining coral red color. Foliage finely cut. This is indeed a little beauty. Each 15c; doz. \$1.25.

HEMEROCALIS.

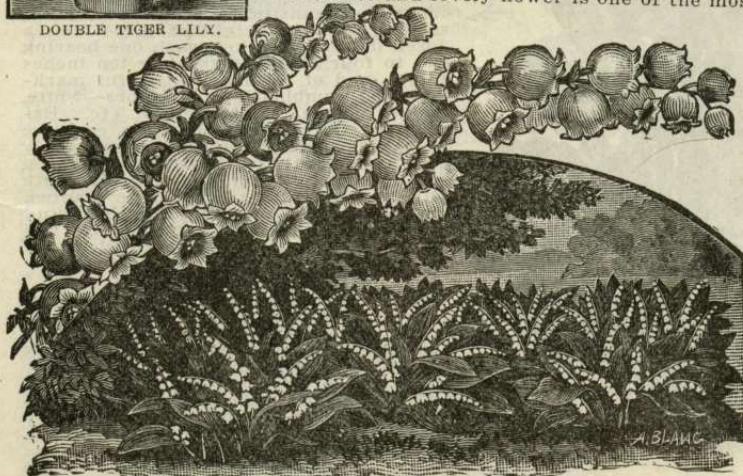
KWANSO — (Double Corn Lily).—A double flowering orange Lily that is entitled to a place in every hardy garden. Flowers beautiful orange, shaded copper, and blooms freely during July and August. Each 10c; doz. \$1.00.

SPECIAL OFFER.

We will send three Lemon and three Orange Lily bulbs postpaid for 50 cents.

SPECIAL BARGAIN OFFER OF LILY OF THE VALLEY.

Most Dainty and Delicious of Blossoms.
This chaste and lovely flower is one of the most



LILY OF THE VALLEY.

useful and charming of those that bloom in spring; the pure white, bell-shaped flowers are delicately scented and keep for a long time after cutting. Why not prepare this fall for a beautiful bed of them next season? Set out roots any time before the ground freezes, selecting a partly shaded and rather moist situation. Once planted and established crowns increase in number and the larger ones flower each year without attention. Price is very low for the choice stock we send out. Six strong roots for 15c; doz. 25c; 100 for \$1.25 postpaid.

GERMAN IRIS.

The true "Fleur-de-Lis," the national flower of France. Perfectly hardy, thrive anywhere, grow and bloom luxuriantly, particularly if plentifully supplied with water or if planted in moist situation. Any of the varieties of German Iris named below 10c each; dozen \$1.00. Large field-grown clumps each 30c; dozen \$3.00.

MME. CHEREAU.—Tall growing sort. The standard petals white, edged lilac; fall petals violet. Very large flowers and strong spikes.

FLORENTINA ALBA.—A lovely soft white, very handsome plant. Very early bloomer; tall. Plant with Florentina for contrast.

FLORENTINA.—Early, tall, flowers blue. Fine variety.

GIPSY SEEDLING.—Standards rich cream yellow; falls deep purple; medium height.

HONORABLE.—Standards cream yellow; falls chestnut brown; medium height. Striking in contrast planting.

CANARY BIRD.—Standards canary yellow; falls white striped with dark purple. A very fine variety. Not tall, and flowers just at top of plant.

CELESTE.—(King of the Blues).—Standards lavender blue; falls dark blue. Tall growing and beautiful.

FLAVESCENS.—Standards cream white; falls cream, veined with bronze. Tall growing; later than most sorts but fine for contrast.

SUCCESSION IRIS BED.

One plant each of the eight named sorts of German Iris, giving a contrast of color from first early spring to the middle of June. Also two Siberian Iris and two Pumula Iris for the outer edge of the bed. In all a dozen choice Iris of different types and colors, postpaid, for only \$1.00. If you want this collection in field-grown clumps for immediate effect, price is \$3.00.

IRIS SIBERICA.—A favorite and small flowered variety with white and blue flowers. Foliage smaller and much finer than other Iris, resembling ribbon grass. Each 10c; dozen 60c.

IRIS PUMULA.—A dwarf, early blooming variety, quite desirable for borders and edgings. Violet blue flowers. Each 5c; dozen 50c; 100 for \$3.00.

JAPANESE IRIS.

These magnificent Iris are among the most beautiful of the summer-flowering plants. Of immense size, and their coloring is exquisite. Think of a plant sending up to a height of three feet, a dozen flowering spikes, each one bearing two to four blossoms eight or ten inches across, and of the most beautiful markings and combinations of colors—white, indigo, purple, blush, yellow, etc. Except the Orchid, no other can compare with this delightful flower; as easily grown as a potato, in any good garden soil, if kept thoroughly wet. Plant with full exposure to the sun. Once planted, they are a joy for a lifetime, blooming profusely in June and July. Double and single mixed, each 15c; dozen \$1.25.

SPANISH IRIS.

Wonderful flowers of richest appearance; graceful and airy in form; and colors and markings as varied as the Japanese, but of different shape. They succeed in any good soil. Plant two or three inches deep and six inches apart, and for the best effect, in beds containing twenty-five or more bulbs; perfectly hardy. For pot culture put four or five in a 5-inch pot and treat same as Hyacinths, but do not bring in for flowering much before March. Each 3c; dozen 20c; 100 for \$1.00, postpaid.



IRIS GERMANICA.



JAPANESE IRIS.



Floral specialists have given this flower great care and attention, until there are now over a thousand named varieties, many of them curiously beautiful in shape and color. It is truly a noble flower rivaling the rose in brilliancy of color and perfection of bloom, while greatly surpassing it in size and stately grandeur. One writer has well said that the "Paeony fully equals the rose except in poetry, perfume, thorns, bugs and disease." They are of the easiest culture, most vigorous habit, and free from disease and insects. The foliage is rich, glossy and ornamental, even when plants are not in bloom. Many of the newer varieties are quite fragrant and no other flower is so well adapted for large showy bouquets. Plant paeonies this year, plant lots of them in rows, beds or as specimen plants on the lawn. They make a grand show. Fall is the best time to set out the roots and they will then begin blooming the next spring and each year become stronger and better. Plant in September, October, or any time before the ground freezes and protect slightly the first winter if planted late. They may be left undisturbed for twenty years or more. In planting set the crowns two inches below the surface. We pay the postage.

WHITE PAEONIES.

FESTIVA MAXIMA.—By far the finest double white Paeony. The flower is of immense size, perfectly globular, the guard petals being large while the inner petals are crimped. Color purest snow white with a few slight carmine marks in the center. Usually sells at \$1.00 each, but we offer it at only 75c; dozen 8.00.

QUEEN VICTORIA.—Very double, and compact; color flesh white, white center, petals lightly spotted with red. A half dozen of these make a magnificent bed. Each 25c; dozen \$2.50.

FESTIVA.—Second only to Festiva Maxima and blooms later. Fine ivory white; few carmine spots on center petals; very fragrant; blooms are very full and cup-shaped. Each 45c; dozen \$4.00.

GOLDEN HARVEST.—This is probably the nearest approach to a yellow Paeony. Outer petals light blush, light yellow center. Very prolific, bearing flowers in clusters of three. Each 60c; dozen \$5.50.

MARIE LEMOINE.—A rare and a magnificent variety; flowers are enormous, opening a light blush pink, changing to white when flower is mature. It is a late bloomer. Very scarce. Each 65c; doz. \$6.50.

PINK AND ROSE PAEONIES.

"ALL-AGLOW."—Iowa Seed Co.'s magnificent pink; well described by its name; outer and guard petals are a delightful pink, while entire center is rich salmon tint. Flowers are extra large and intensely

brilliant; blooms from medium early till very late. One of the best pink Paeonies in existence. Each 35c; dozen \$3.50.

VICTORIA TRICOLOR.—Very large, full flower, outer petals pale rose, inner petals white and center bright rose; thus showing three shades of color from which it takes its name. Each 25c; dozen \$2.50.

FLORAL TREASURE.—One of the finest in the entire list. Flowers are extra large and very double; exceedingly prolific; color soft delicate blush pink. Ea. 35c; doz. \$3.50.

RUTH.—Color of the American Beauty rose. An especially choice sort. Foliage rich, glossy green, ornamental even when the flower is not in bloom. Flower is of large size, perfectly double. Each 25c; dozen \$2.50.

LA ESPERANCE.—An exceedingly fine vivid rose colored flower, growing compact and highly perfumed. Early and free flowering. Each 35c; dozen \$3.50.

BRIGHT AND DARK RED PAEONIES.

MARECHAL VALIANT.—Beautiful solid flower of deep rose color, differing from most sorts in the solid flower having practically no division of outer petals and center. Very double; late flowering. Each 35c; dozen \$3.50.

GRANDIFLORA RUBRA.—Extra large perfect balls of blood red, magnificent flowers. Probably the largest red variety in existence, often 8 or 9 inches across. Give it rich soil and you will be surprised. Each 50c; dozen \$4.75.

Additional Varieties of Red Paeonies on Following Page.

PAEONIES.---(Continued.)

ANDRE LAURIES.—A very double flower of deep bright red. Bloom till late in the season. Strong, robust grower. Each 25c; dozen \$2.50.

RUBRA TRIUMPHANS.—An early blooming, very sweet scented flower of rich, brilliant, glowing, satiny crimson color. Each 35c; dozen \$2.00.

POTTSH.—Color deep, dense, bright crimson; a free bloomer; a beautiful and desirable variety. Each 35c; dozen \$3.50.

HARDY PHLOX.

We know of nothing in hardy perennials or effective than a fine collection of hardy Phloxes, and the new and improved varieties that have been introduced recently will add very much to their popularity. Flowers are very large and have exceeding brilliant shades of color. They bloom from June until very late fall.

PEARL.—Best pure white variety. Large beautiful flowers. Each 15c; field grown clumps each 25c.

AMPHION.—Deep purplish crimson. Each 15c.

COQUELICOT.—A glowing orange red with violet eye. Each 15c.

ATALA.—Clear dark pink with a light center. Each 10c.

PEACHBLOW.—Beautiful delicate pink with white markings. Ea. 15c.

WM. ROBINSON.—Rosy salmon. Each 15c.

AMORITE.—White overlaid with lilac. Center rosy crimson. Each 10c.

BAYARD.—Attractive new variety. A bright rosy lilac. Each 15c.

CHAMPS ELYSEE.—A dark rich crimson. Each 15c.

ECLAIREUR.—A very handsome variety with unusually large flowers of purplish crimson, surrounded with a white halo. Each 15c.

HENRY MURGER.—An extra fine variety, having large white flowers, with very large crimson center. Each 15c.

MIXED VARIETIES.—A fine assortment. Each 10c; dozen 85c. Large field grown clumps, each 25c.

CREeping PHLOX.

The Creeping Phloxes have a charming beauty all their own, and for general usefulness are not to be surpassed by any flower that grows. They will thrive in any soil, no matter how poor, unless it is very



PHLOX SUBLATA (Creeping Phlox or Moss Pink)

The flowers are extremely large and graceful, averaging about four inches in diameter with three or more rows of petals of the purest glistening whiteness, and are borne on single, stiff, wiry stems, nearly two feet in length. It originated with Luther Burbank. Strong plants 15c each, \$1.25 per dozen. Field grown clumps 25c each.

PRINCE IMPERIAL.—A deep purplish crimson, shining and satiny. Flower very double; rich and striking; early. A splendid sort for contrast with lighter shades. Each 50c; dozen \$4.50.

HUMEL.—Very large and full and one of the finest; color bright cherry red; delightfully fragrant. Elegant foliage; a fine specimen plant for the lawn. Blooms late. Each 30c; dozen \$3.00.

Paeony Bargain!
One White, one Pink, one Red.
Our choice of varieties, postpaid for only 49cts.



HARDY PHLOX.

situation, except a very shady one; and in any wet. They are absolutely hardy without protection. They have neat, evergreen foliage, and when in bloom, which is during the month of May, their multitude of lovely pink, white or blue flowers cover everything beneath as completely as a carpet covers a floor. They bloom again in September, but not so freely. They do well on good soil, but are also desirable for covering rocky hillsides, sandy slopes, bare ground too poor to grow anything else, and for edging borders of hardy plants or shrubbery they are unsurpassed. Botanically known as *Phlox Subulata*. We can furnish three colors: pure white, deep pink and light blue. Each 10c; dozen 75c; per 100 \$5.00.

SHASTA DAISY.

One of the most marvelous productions in the flower line that has ever been brought to the notice of floriculturists. It can be grown out of doors by anybody where it is not cold enough to kill oak trees. It is perennial, blooming better and more abundantly each season. The

DICENTRA (*Bleeding Heart*).**DICENTRA.**

SPECTABILIS.—The old Bleeding Heart, as lovely as ever. In early spring it bears its long chain of pendulous bloom of exquisite beauty. Ea. 15c; dozen \$1.40.

SPECTABILIS ALBA.—The white flowered variety of Bleeding Heart. Beautiful in contrast. Ea. 25c; dozen \$2.50.

CANTERBURY BELLS

We can furnish them, both double and single, in assorted colors. Ea. 10c; dozen \$1.00.

CHRYSANTHEMUM.

INODORUM — (Flora Pleno).—A hardy biennial variety producing an abundance double white blossoms somewhat resembling the pompon varieties. Ea. 10c; doz. 85c.

DELPHINIUM.

FORMOSUM — (Hardy Larkspur).—Long spikes of bright blue flowers, blooming continually from June until frost. Handsome in clumps. Each 15c; dozen \$1.50.

GOLDEN GLOW.

A glorious hardy plant that should find a place in every garden. It is of fine habit and vigorous growth. The stems are long and gracefully poised. It attains a height of six to eight feet, and will produce hundreds of bright yellow blossoms during August and September, each as large as a good sized Chrysanthemum. It is of easiest culture. Nice for a screen row at back of lawn. Price 10c; dozen \$1.00.

SWEET WILLIAM.

Well known, free blooming, hardy perennial plants which produce masses of lovely, brilliant, sweet-scented flowers through a long period, making a splendid effect in beds. One foot high. Flowers borne on heads or umbels, with individual flowers nearly an inch across. Color white, pink, crimson, carmine, purple, etc., with eyes and rich markings. Each 10c; dozen 85c. Field grown clumps each 25c.



HARDY GARDEN PINKS.

ACHILLEA.

THE PEARL.—Beyond question the finest of all plants for cemetery planting. The flowers are good sized, forming a beautiful plant eighteen inches high, completely covered with pure white flowers from July until frost. We cannot too highly recommend this for general planting. Each 10c; dozen 75c.

AQUILEGIA.

These beautiful flowers, often called Columbines, are always beautiful and attractive, reminding one of the woods. Many handsome colors. Each 15c; dozen \$1.25. Large clumps 25c.

FOXGLOVE.

(Digitalis).—These are most satisfactory summer flowering hardy perennials, succeeding under almost all conditions, and with but trifling attention will give a wealth of flowers during June and July. They are used extensively with good effect in shrubberies and in other shady situations. Each 10c; doz. \$1.00. Large clumps 25c.

HARDY GARDEN PINKS.

Dwarf hardy plants that will grow anywhere and increase in beauty every year. Delightful clove-like fragrance.

HER MAJESTY.—Grand variety; plants grow to large size, spreading and producing immense numbers of pure white, double flowers. Ea. 10c; doz. \$1.

MARY GRAY.—Reddish purple with narrow white lacing. Each 10c; doz. \$1.

SOUR DE SALE.—Soft, rosy pink, very double. Each 15c; dozen \$1.25.

ARISTOCRAT.—Single or semi-double fringed variety. Salmon pink and blotched maroon. Each 10c; dozen 85c.

ESSEX WITCH.—Delicate pink, finely fringed. Each 10c; dozen \$1.00.

MIXED VARIETIES.—Desirable for large beds or borders. Per doz. 65c; 100 for \$4.00.

GOLDEN GLOW (*Rudbeckia*).

HARDY SHRUBS.

There is nothing which so quickly, and for so little cost, adds so much to the beauty, cheerfulness and homelike appearance of a place as an assortment of hardy shrubs. They are permanent improvements which increase in size, value and beauty year after year. Our price is for strong, healthy plants sent by mail or express prepaid. Those marked large or dormant are strong two-year-old plants.

ARALIA SPINOSA.

A curious, spiny-trunked, shrub-like tree, also sometimes called Hercules' Club or Devil's Walking Stick. Valuable for producing tropical effects. Very showy. Each 25c. Extra large size by express 75c.

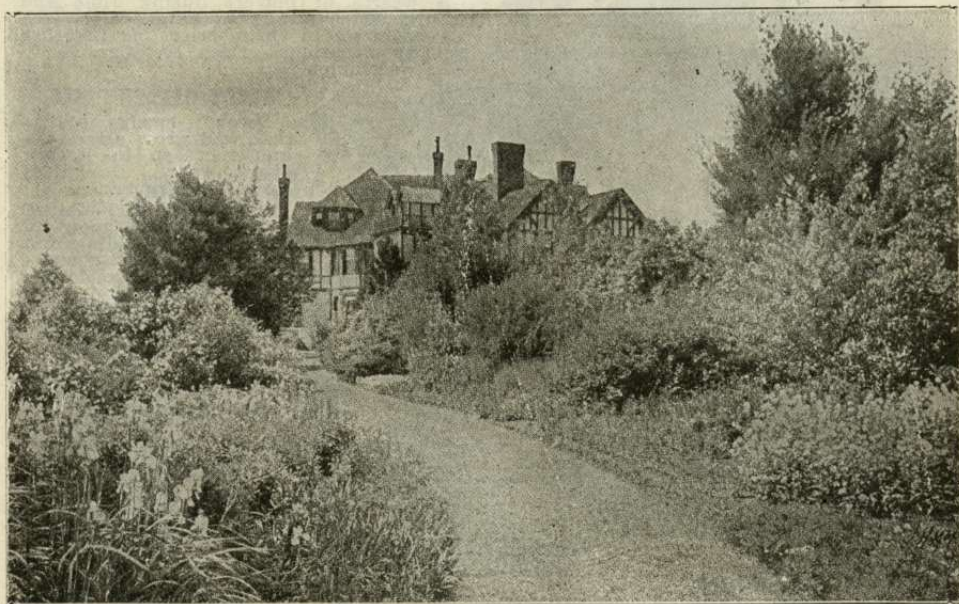
CYDONIA.

JAPONICA—(Japan Quince).—Has bright scarlet crimson flowers. It blooms early in the spring and is fine for specimen plants on the lawn or for hedges. Each 15c; large 35c.

CORNUS.

FLORIDA.—(White Flowering Dogwood).—An ornamental and spreading, irregular shaped tree producing large white flowers in the spring and rich crimson foliage in autumn. Large, 35c.

STOLONIFERA—(Red Twigg'd Dogwood).—A strong growing shrub with clusters of fine white flowers, the stem and branches turning blood-red in winter. Is very conspicuous and ornamental. Each 15c; large 30c.



A STRIKING EXAMPLE OF WHAT CAN BE DONE WITH HARDY SHRUBS.

CORCORUS.

JAPONICA—(Kerria).—A beautiful and graceful shrub from 2 to 5 feet high and worthy a place on the finest lawn. The variegated foliage and immense quantity of bloom make it always a prominent feature in any landscape effect. Almost constantly in bloom from June to October. Produces hundreds of large, double, yellow flowers. Each 15c; large 25c.

A GREAT SHRUB OFFER.

Choice collection for permanent planting: 1 *Deutzia*, *Pride of Rochester*; 1 *Forsythia*; 1 *Spirea*, *Anthony Waterer*; 1 *Hydrangea*, *Paniculata Grandiflora*; 1 *Weigelia*, *Rosea*; 1 *Golden Elder*; 1 *Syringa*; 1 *Lilac*; 1 *Snowberry*; 1 *Climbing Honeysuckle*; 1 *Corchorus*; 1 *Althea*. All by mail, postpaid, 88c. Extra large two-year-old plants, by express, not prepaid, only \$2.00.

CALYCANTHUS.

A beautiful sweet-scented shrub; flowers purple, quite double, exquisitely fragrant. Large size, each 25c.

LILACS.

PERSIAN.—A well known, strong growing shrub, bearing large, fragrant clusters of purple flowers early in spring. Each 10c; large 25c.

SINGLE WHITE.—Like above, but has white flowers, making it more desired by some. Each 15c; large 35c.

FIERY PLUME.—A novelty in Lilacs; bright red color. Very showy and desirable. Each 50c.

NEW DOUBLE WHITE.—A novelty of great merit and the finest flowering shrub which has been introduced for many years. The truss is of large size, and produced in profusion. The individual flowers resemble miniature tuberoses. Each 25c; large 50c.

COMMON.—The old standard variety with bluish purple flowers. Each 10c; large 25c.

DEUTZIA.

PRIDE OF ROCHESTER.—By far the handsomest variety of Deutzias. It is a very desirable shrub of strong, hardy growth, with nice, luxuriant foliage and bearing an abundance of beautiful racemes of double, pure white flowers. Must be seen to be appreciated. Every one of our customers should have at least one. Ea. 15c; large 30c.

CRENATA.—Flowers double white, tinged with pink. Small 15c; large 25c.

GRACILIS.—A pretty, round, bush-shaped Deutzia blooming freely. Each 15c; large size 25c each.

CANDIDISSIMA.—Grows about 3 feet high; bears pure white flowers. Each 15c.

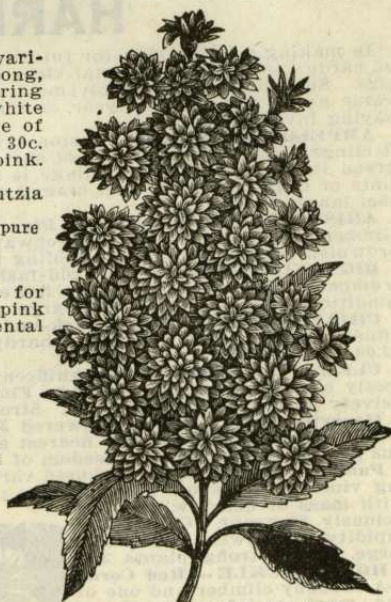
DWARF HONEYSUCKLE.

RED TARTARIAN.—The best variety of Lonicera for general planting. Blooms in June, with beautiful pink and white flowers, followed by red berries. Ornamental through the season. Each 15c; large 30c.

SNOWBALL.

COMMON.—A well known shrub covered with dense white flowers, hence name. Ea. 15c; large 25c.

JAPAN.—A valuable improvement on the common Snowball; the flowers are smaller, more numerous, frequently as many as twenty on a stem 18 in. long. Each 20c; large 35c.



PRIDE OF ROCHESTER DEUTZIA.

SYRINGA.

(Mock Orange).—Immense masses of pure white, intensely fragrant flowers in June. Each 10c; large 25c.

GRANDIFLORA.—One of the strongest growing varieties with large flowers. Each 15c; large 30c.

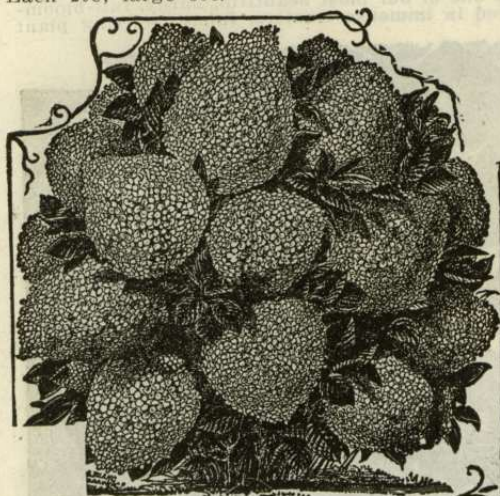
LE MOINEL.—A charmingly fragrant variety. Flowers yellowish white. Each 15c; large 30c.

FLOWERING CURRANT.

The old-fashioned large growing Missouri Flowering Currant, growing 6 to 8 feet high and bearing yellow flowers. Foliage fine cut and attractive. Each 20c.



JAPAN SNOWBALL.



HYDRANGAEA PANICULATA GRANDIFLORA.

HYDRANGAEA.

NEW SNOWBALL — (Arborescens Grandiflora Alba).—A magnificent new variety of the hardy Hydrangea. Flowers are borne much more profusely than on the Paniculata and though blooms are not so large they are pure white and more like the Snowball. Comes in bloom in July and August at a time when flowers of this type are scarce and is especially valuable for this reason. We believe this will become very popular as it is sure to give satisfaction. Each 25c; large 50c.

PANICULATA GRANDIFLORA.—The grandest as well as the most popular of all shrubs, and hundreds of thousands of them are sold every year and the demand is constantly increasing. Unsurpassed for the lawn, a hedge, or cemetery planting. It readily attains a height of 5 to 7 feet; hardy in all localities, needs no protection in winter; blooms the first and every season in July for two or three months; the flowers are massive, cone-shaped, sometimes 10 inches in length, and changing from the original pure white to pink, and finally to a beautiful, rich, coppery red. Each 10c; dozen \$1.00; per 100, by express, \$7.00. Large dormant plants each 30c; dozen \$2.50. Large tree form plants 75c. **Special.**—Two-year-old plants grown specially for hedges by express, per 100 \$14.00; 25 for \$3.75.

HARDY VINES.

In making a home, plan for future beauty, comfort and happiness by planting a variety of hardy Clematis, ornamental vines and roses, which will constantly grow in beauty and size. Such permanent improvement adds greatly to the value of any property, and the value grows from year to year, so that instead of an expense they should be considered a paying investment.

AMPELOPSIS—Veitchi.—(Boston Ivy).—One of the finest climbers for covering walls, as it clings firmly to the smoothest surface, giving it the appearance of being shingled with green leaves. In summer foliage is a rich dark green, but in fall it assumes gorgeous tints of crimson, scarlet and orange so dazzling as to be seen at a great distance. Each 15c; large plants 25c.

ARISTOLOCHIA—Dutchman's Pipe Vine.—The well-known, vigorous and rapid-growing climber used so extensively in archways, or verandas. It takes its name from the singular brownish colored flowers, resembling in shape a pipe. Each 40c.

BIGNONIA—Radicans.—An old-fashioned hardy climber. It has clusters of large trumpet-shaped crimson orange flowers. It grows in almost any soil and under trying conditions; hardy. Each 10c; large plants 25c.

CHINESE KUDZU VINE—Jack-and-the-Beanstalk Vine.—Large leaves of bright green afford a dense shade. Perfectly hardy; 50 to 75 feet when established. Each 20c; dozen \$2.00. Large 75c.

CLEMATIS—Jackmanii.—Magnificent and showy vine; of strong, healthy growth, perfectly hardy and sure to succeed. Flowers four to six inches in diameter, of a rich, deep, velvety purple, distinctly veined. Strong plants, ea. 50c; extra large 3-year-old roots, 75c.

Henryii.—Briefly, a white-flowered Jackmanii. Finest of all the white sorts. Each 50c.

Mad. Edouard Andre.—The nearest approach to a bright red ever sent out. Same vigorous growth, hardiness and freedom of bloom as above; color is a pleasing carmine. Ea. 50c.

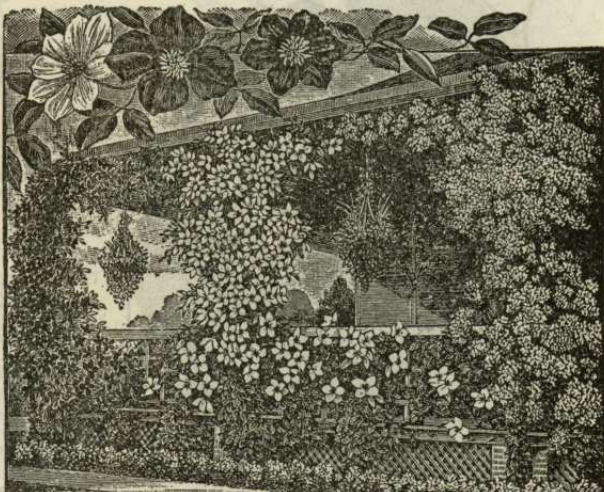
Paniculata.—This small-flowered variety is one of our most beautiful, hardy, fall-blooming vines. Pure snow-white flowers produced in immense clusters, fairly covering plant with mass of fleecy white. Deliciously fragrant. Of extreme rapidity of growth. Each 15c; large, extra strong plants 30c.

HONEYSUCKLE—Red Coral.—A shrubby climber and one of the most satisfactory of all plants. Bright red, fragrant, trumpet-shaped flowers almost continuously. Each 15c; dozen \$1.50. Large plants 25c.

HALLIANA—Hall's Japan.—A strong, rapid grower, perfectly hardy and almost an evergreen, even in this severe climate. Blooms constantly and profusely from June to November. Flowers are pure white, changing to yellow, and of peculiarly delicious fragrance. Each 10c; doz. \$1.00. Large 20c; dozen \$2.00.

VITIS—Variegated Grape.—Resembling Ampelopsis, with foliage green and variegated white and pink. Bears bright blue berries. Best for trailing over rocks or low fences. Each 15c; large 35c.

WISTARIA—Blue Chinese.—A very rapid grower, covered with bloom it is magnificent. Each 15c; large 35c.



CLEMATIS JACKMANII. CLEMATIS HENRYII. CLEMATIS PANICULATA.

WOODBINE—Virginia Creeper.—Strong, rapid grower, foliage large, dark green, in autumn bronze and crimson. This is an old favorite and quite common in most localities. Valuable for covering back porches, out-buildings, arbors, etc. Each 10c; dozen \$1.00. Large size 30c; dozen \$2.50.

Englemanni.—A smaller variety than the above, but of more clinging nature. Foliage light green, but changing to beautiful shades in fall. Each 25c.



WISTARIA.

HARDY VINE COLLECTION.

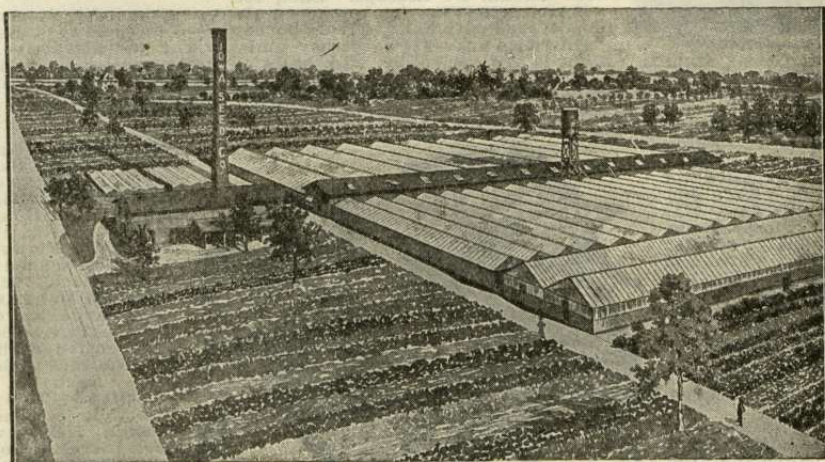
One *Ampelopsis*, for the buildings; one *Clematis Paniculata*, for the front porch; one *Honeysuckle*, for the trellis in the front yard or on the lawn; one *Woodbine*, for the fence or screen. These are specially selected for the purposes mentioned but can be used to advantage in many different ways. We will send you one of each of the beautiful vines postpaid for 40c, or will send you extra large, strong plants suitable for immediate effects, by express, not prepaid, for 75c.

FLOWER PLANT DEPARTMENT

We make a great specialty of this department and claim to fill more orders for flower plants than any concern in the west. We now have thirty-two large greenhouses besides a large number of steam heated hot-beds and cold frames, thus giving us the largest amount of glass of any concern in central Iowa. We employ experienced florists to look after this branch of our business and all their time and attention is devoted to growing flower plants and bulbs exclusively for the mail order trade, as for this purpose they require special culture in greenhouses kept at a low temperature so that they will be hardy, healthy and vigorous. The plants thus grown are much better prepared for setting out in the open ground than those grown in the ordinary greenhouses which are kept at a high temperature. We are filling orders constantly from every state and also from various parts of Canada, Mexico, etc.

We Guarantee—That plants ordered from this list will reach purchasers in any part of the United States in good order if sent by mail or express.

Terms and Discounts.—At prices named we send plants postpaid except where noted. Orders must amount to at least 25c, for if of less amount they are filled at a loss. With each order of 50 cent or over we add valuable plants without charge.



IOWA SEED COMPANY'S 32 GREENHOUSES.

ASPARAGUS—Sprengeri.—Splendid for hanging baskets or pots. Droops most naturally, sending out numerous feathery fronds forming an exquisitely handsome and striking picture. Literally a mass of emerald green. Nice young plants ea. 10c; large size, ea. 25c.

Plumosus Nanus.—One of the handsomest of our foliage plants. Easily grown, even in a north window. Leaves are bright green, gracefully arched, as finely woven as the finest silken mesh; their lasting qualities, when cut, are remarkable, retaining their freshness for weeks. Each 15c; large 25c.

ABUTILON—Savitzl.—A beautiful new variegated-leaved plant. Its large maple-like leaves are almost white, being blotched here and there only with clear, bright green. Large orange-colored, bell-shaped flowers. Ea. 15c.

Golden Bells.—The best yellow flowering variety; of dwarf habit. Each 15c.

Thompsonii Plena.—Instead of single ball-shaped blooms like all other kinds, this has a perfectly double flower of a rich, deep orange color, shaded and streaked with crimson. Foliage handsomely variegated. Each 10c.

ARAUCARIA—Excelsa.—A beautiful plant, resembling the pine somewhat, though much finer in texture. It is most unique in appearance. Its deep green feathery foliage arranged in whorls—rising one above the other at regular distance—makes it a plant of rare value for house or conservatory decorations. By mail, each \$1.00. Large, by express, not prepaid, \$2.00 and \$3.00 each.



ASPARAGUS PLUMOSUS NANUS.



ARAUCARIA.

BEGONIAS.



LOUISE ERDODY BEGONIA.

McBETHII.—Foliage fine, fern-like. Panicles of pure white flowers produced in the greatest profusion. It is the most persistent bloomer of the Begonias. Each 10c.

PROFUSION.—A new French variety of vigorous growth. Flowers are bright pink, produced evenly all over the plant. Each 10c.

FOURNAISE.—Flowers produced in large drooping panicles of bright red. Each 10c.

ALBA PICTA.—Has leaves of glossy green color, thickly spotted with silvery white, and white flowers. Ea. 15c.

MARJORIE DAW.—Beautiful trailing variety; its bright salmon pink flowers are produced in broad panicles. Bright green "angel wing" leaves. Each 15c.

REX.—The Rex or King Begonia may well be called the king of foliage plants and they make a magnificent showing with their rich, lustrous tints and tropical looking leaves. There are many different varieties, presenting a great range of beautiful markings and splendid color effects. Best results in moist and shaded situations, making it the very finest plant for household decoration. We have a particularly choice stock of these, including about twenty different kinds, and we are sure they will please. Each 20c. Large specimen plants 40c.

BEAUTIFUL BEGONIA COLLECTION.

One Rex, one Alba Picta, one Argentea Guttata, one McBethii, one Rubra, one Pres. Carnot. Six fine plants, giving a wide range of beauty. Postpaid for only 75 cts.

CHRISTMAS PEPPER.

Surprisingly pretty house plant. A round, compact bush twelve inches in height with dark olive green leaves and covered with curious little heart-shaped fruits of bright colors—purple, white, yellow, orange and red on the same bush. Each 15c.

CUPHEA.

PLATYCENTRA.—This is the old-fashioned Cigar Plant with racemes of narrow, tubular flowers of scarlet tipped with purple. Popular because it is always in bloom, and is bright and attractive. Each 10c.

COUNTESS LOUISE ERDODY.—This variety is sometimes called "Snail Begonia" on account of the peculiar formation of the leaves. The form is exceedingly odd and unique. The striking peculiarity which distinguishes it from all other Begonias consists in the fact that the two lobes at the base of the leaf do not grow side by side, but one of them winds in a spiral-like way until in a full-grown leaf there are four of these twists lying on top of the leaf nearly 2 inches high. The leaf has a metallic lustre, dark silvery in the center, shading into coppery rose toward the margin, which is broadly and evenly edged with the same hue, but darker and more brilliant. Very curious. Each 20c. Large specimen plant 50c.

VERNON.—Of unusual value for bedding, as it will stand the hot summer sun. Flowers are of pink, bluish and brilliant red color, spotted and margined with bronze purple. Ea. 10c; doz. 90c.

PRES. CARNOT.—Flowers bright colored, otherwise identical with Madam De Lesseps. Each 15c.

MARGUERITE.—Leaves green above, red beneath, stems purple, covered with hairs. Freely borne rose-colored flowers. Ea. 15c.

HAAGEANA.—Flowers rosy pink, bright and attractive. The plant is tall. Shrubby, with hairs on stems and leaves. Ea. 15c.

METALICA.—An elegant variety, having very large leaves shaded with green, crimson and olive, with a peculiar metallic luster over all. Flowers a clear pink, shaded with white. Each 10c.

MADAM DE LESSEPS.—Has large leaves of silky texture, beautifully spotted with silver. Flowers pink and white. Each 15c.

RUBRA.—This fine variety is a constant bloomer. Heavy, waxy green leaves. Flowers rosy scarlet. Each 15c.

ARGENTEA GUTTATA.—Purple bronze leaves with silvery markings. The flowers are white. Each 10c.

MINIATA.—A beautiful variety of upright bushy style of growth; flower bright scarlet. They are very free flowering. Each 10c.



REX BEGONIA.



ARGENTEA GUTTATA BEGONIA.

CARNATIONS.

Fragrant flowers always sought after, and the rich, spicy odor of the carnation, combined with its various colors, leaves little to be desired. Easily grown and bloom freely. At this season of the year we can only offer large field-grown plants, which are somewhat higher in price than the small plants offered in spring, but which will furnish winter flowers.

WHITE ENCHANTRESS.—One of the finest of white carnations. Type and habit like the original Enchantress. Flowers extra large and of purest color. Strong grower and profuse bloomer. Each 35c.

WHITE LAWSON.—Like the original Mrs. Lawson in size and manner of growth, but pure white. Each 30c.

BOSTON MARKET.—An ivory white of great beauty. Flowers are of good size and shape; plant a good grower. An altogether satisfactory variety. Each 25c.

WHITE PERFECTION.—Is pure white. Blooms three inches and over in diameter. Beautifully fringed; fragrant; exceedingly free blooming; early and continuous; vigorous; the stems stiff. Each 30c.

LADY BOUNTIFUL.—Large, nicely filled flowers of purest white. Not only good for large sized blooms when given special care, but valuable for garden planting and pot culture. Very sweetly scented with that delightful, old-fashioned clove fragrance lacking in many of the newer Carnations. Each 30c.

QUEEN LOUISE.—Flower pure white, fragrant and of large size. Center well filled, rounding the flower to a most pleasing form. The color is very pure; stem exceptionally long. Each 25c.

ENCHANTRESS.—A charming variety of immense size and delightful plush pink color. The original of the Popular Enchantress type of Carnation, which is the favorite with florists. Each 30c.

ROSE PINK ENCHANTRESS.—This elegant new variety which is a sport from the Enchantress, has created a great furor among florists and has captured the best prizes at flower shows. It is of extra large size and of beautiful rose color. Each 30c.

MRS. THOMAS W. LAWSON.—The immense pink variety for which \$30,000.00 was paid by Mr. Lawson, the highest price ever paid for a plant novelty in this country. Flowers 3½ inches in diameter; color beautiful deep pink. Each 25c.

NELSON FISHER.—Deep cerise pink, almost rose. A standard sort of easy culture and satisfactory in every way. Each 25c.

WINDSOR.—Clear, silvery pink. A beautiful, distinct shade of color which is sure to please. A large flowered sort, free blooming and desirable. Each 35c.

CARDINAL.—Medium to large sized bright scarlet; claimed best of its color. Each 30c.

BEACON.—Splendid new long-blooming red. Flowers are extra large, graceful form and of bright scarlet slightly tinged orange. Each 30c.

HARLOWARDEN.—Largest and best bright dazzling crimson. A free bloomer with long stems. Each 30c.



ENCHANTRESS



EXHIBITION CHRYSANTHEMUM.

VICTORY.—Many Carnation growers say it is the finest scarlet color of any carnation; even when the flowers are aged they seem to retain their bright color. Each 30c.

VARIEGATED LAWSON.—Closely bearing out the admirable Lawson type in all respects, color being 'a pretty commingling of pink and white. Each 30c.

PROSPERITY.—Unquestionably the largest carnation of any color ever offered, the flowers measuring 4 inches in diameter and have a delightful clove fragrance. The color is a pure white, overlaid with shadings of soft pink. Each 30c.

CHRYSANTHEMUMS.

In the fall we have only large specimen plants in stock. We cannot supply newly propagated plants by mail but can only furnish large plants either budding to bloom or in full flower. These are sent by express at customer's expense for charges. We will pack them carefully and feel sure we can get them to you in good condition. We offer them only to color and can supply the following shades in exhibition plants: Pure White, Ivory White, Cream, Bright Yellow, Light Pink, Rose, Lavender, Dark Red, and Crimson. We have the Ostrich Plums types in white, yellow and pink, and a number of bicolor flowers showing two shades of red, or bronze and red. Price each \$1.00 to \$2.00.

CALLAS.

MAMMOTH WHITE.—Largest flowering variety and most majestic. It is of perfect flowering form, with large tropical appearing leaves of bright green color and yielding throughout the season a profusion of white flowers. Large bulbs each 25c, 3 for 60c; medium size each 15c, 3 for 40c.

ELLIOTTIANA.—This fine Calla is identical with the Mammoth White in every respect, except the color, which is of bright golden yellow, so that the great value of this grand novelty can be readily appreciated. Each 50c.

AURATA.—A beautiful new variety with light yellow flowers. Each 30c.

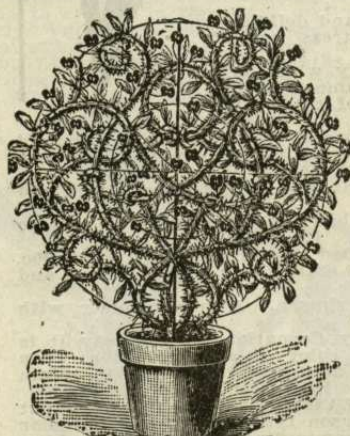
LITTLE GEM.—A perfect miniature Calla, growing eight to twelve inches high, producing beautiful snow-white blossoms. Begins to bloom when only a few inches high, blooms summer or winter. Growing plants each 15c; 3 for 40c.

SPOTTED LEAF.—An ornamental plant even when only a few inches high; blooms summer or beautifully spotted with white; fine for planting in the garden in summer. Each 10c; dozen \$1.00.

CACTUS.

To some people these curious plants are interesting and attractive, and we therefore offer them here. We have many choice varieties at 10c to 25c each. A collection of 6 varieties for \$1.00, postpaid.

CHRISTMAS CACTUS—*Epiphillum*.—Common basket Cactus. Stems branching and hanging in bunches. Flowers bright red; blooms freely. Each 15c.



CROWN OF THORNS.



CYCLAMEN.



LITTLE GEM CALLA.

NIGHT BLOOMING CEREUS.—A gorgeous Cactus bearing abundant pure white blossoms measuring twelve inches across. A plant loaded with these flowers is a sight never to be forgotten. Blooms at night and is very fragrant. Better order one and call your neighbors in to see it bloom. Is the true round-stemmed variety and not the common flat-leaved sort. Each 15c; large 35c.

CROWN OF THORNS

EUPHORBIA.—Very curious and remarkable window plant. Strong-growing climbing plant or creeper that can be trained over any desired form. Has bright scarlet flowers, which almost cover the deep, glossy green leaves; an object of rare and striking beauty. Is easily grown. Grows wild in Judea, and it is claimed that it was from this plant that the crown of thorns was made which was worn by our Saviour, and it is therefore of especial interest. Each 20c.



NIGHT-BLOOMING CEREUS.

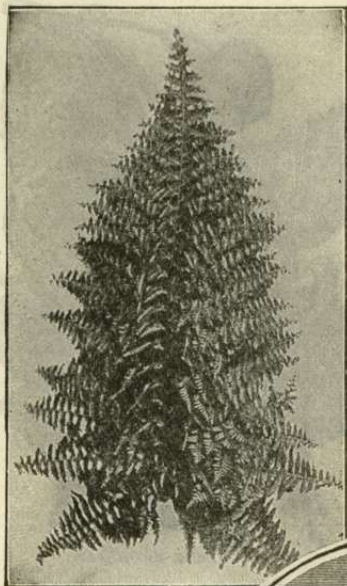
CYCLAMEN.

GIANT FLOWERED.—Most beautiful and decorative of all pot plants, for winter and spring blooming. Foliage broad, massive and graceful, of dark, olive green, beautifully variegated with silver and rose. The immense, fairy-like flowers are carried on long stems and produced in profusion for several months; quite fragrant. Assorted colors. Each 15c; extra large size 25c.

FARFUGIUM.

GRANDE—(Leopard Plant).—A beautiful ornamental foliage plant, for planting in open border, or in shaded position; leaves 4 to 8 inches in diameter; are of a thick, leathery texture, dark green color, with bright yellow spots. Each 15c.

FERNS.



ELEGANTISSIMA FERN.

WHITMANI.—

Combines all the graceful plumpness and charm of Elegantissima with additional features of size, shape and growth that give it distinction and added commercial value. Whitmani is of more dwarf growth, but evens matters by compactness, and a wider and stockier shape. The fronds, although even more fine-cut, are more erect, and less liable to revert to the original Boston type. Ea. 25c; large 75c. Extra fine specimens \$1.00.

HARROWSII.—A type of Ostrich Plume with fronds more stiff and erect than the Piersonii. Foliage slightly finer. A fine variety. Each 15c; large 50c.

ANNA FOSTER FERN.—A beautiful new variety of the Boston Fern having broad fronds, and petals are finely cut or divided into tiny leaflets, a most beautiful and graceful effect. Each 20c.

MAIDEN HAIR FERN.—Very popular. The most graceful and useful of all for cut flower work. Each 15c.

MOSS FERN.—(Selaginella or Lycopodium).—Has delicate lace-like foliage. Fine for fern dishes and always beautiful. Each 10c.

PTERIS ALBO LINEATI.—Beautiful small variety with handsomely variegated green and white foliage. Fine for fern dishes. Each 10c; dozen \$1.00.

SPECIAL FERN COLLECTION.

1 Elegantissima, 1 Boston, 1 Whitmani, 1 Anna Foster, 1 Ostrich Plume, 1 Maiden Hair, Six fine plants for \$1.00, postpaid.



WHITMANI FERN.

ELEGANTISSIMA.—This is a sport from the well known Ostrich Plume Fern in which the plumpy peculiarity of the original form is even more distinctly developed, the side pinnae being again subdivided, making both sides of the frond equally beautiful while at the same time the plant is of much more compact habit, growing only one-half as tall, but with fronds nearly twice as wide, making it a much more desirable plant for all purposes. Quite rare. Each 15c; large 50c.

SCOTTI.—Of more dwarf growth than Boston and makes a handsome pot plant. A rapid grower and very hardy. Each 20c.

BOSTON FERN.—(Improved Sword Fern).—This is a wonderfully healthy, rapid-growing and graceful house plant which has been in great demand everywhere, and many people buy it in preference to the finest Palms or Rubber Plants. Thrives in all rooms, gas or furnace heat does not seem to injure it. It is one of the most beautiful and useful of house plants, being of easy culture and its sword-like fronds, on large specimens attaining a length of 5 to 6 feet, produced in bewildering mass, arching curves and interlacing in every conceivable direction. Each 15c; large plants 25c and 50c.

OSTRICH PLUME FERN.—(Piersonii).—A beautiful novelty which is a sport from the above but is indescribably more beautiful. Its feathery, plume-like fronds represented in our cut more nearly resemble the graceful ostrich plume than anything else in nature to which we can compare them. One has to see a plant in growth to appreciate its beauty and value. The fronds grow broad and very heavy, measuring at least six inches across when fully developed, increasing in beauty as they develop. Each 15c; large 25c, 50c and \$1.00.

PHILADELPHIA LACE—

(Amerpohii).—The latest Ostrich Plume Fern. Beautiful feathery foliage. Compact dwarf growing habit; most delicate and graceful of its class. Truly a beautiful fern for the home. Each 25c.

SMALL FERNS.—Nice assortment for ferneries or fern pans. Ea. 10c, 6 for 50c; doz. 85c.



BOSTON FERN.

FUCHSIAS.

These, when in full bloom, are the most graceful of all cultivated plants; nothing surpasses the beauty of well-grown specimens.

ELM CITY.—A popular variety and one of the best; tube and sepals bright coral red; large double purple corolla; blooms all year. Each 10c.

SPECIOSA.—Sepals bluish, corolla carmine. Best winter bloomer. Each 10c.

TRAILING QUEEN.—Of beautiful trailing habit; fine for hanging baskets. Bright rich scarlet and purple flowers. Each 15c.

WHITE PHENOMENAL.—The grandest double white variety in existence; should be in every home. Ea. 15c.

PHENOMENAL.—Enormous flowers, a single one measuring 3 inches across; sepals bright scarlet, rich purple corolla, very double, flaked with red. Each 10c.

MONARCH.—This is by far the largest of the single varieties. Its immense blooms are a very dark purple. Each 10c.

BLACK PRINCE.—Tube and sepals bright carmine, sepals large and broad with pale green tips; large, open, pale pink corolla. We once had a plant 7 feet high, bearing two thousand flowers at once. Each 10c.

SUNRAY.—A novelty in the Fuchsia family. Very different from other varieties in that their beauty lies in the foliage, from which it gets its name. All the colors of the sunset, clear yellow, golden bronze and red, are combined in the most effective way to make a pretty foliage plant. Each 20c.

MRS. E. G. HILL.—Beautiful fine red sepals, white corolla. A standard variety of great beauty. Each 15c.

LITTLE PET.—This is a little beauty, the plant being covered with small pink and purple flowers. Each 15c.

MARY.—Great novelty. Has small but very long, single, bright coral red flowers growing in large clusters. Ea. 15c.

BLAND'S NEW STRIPED.—Corolla purple, striped rose. Each 15c.

ROSAINES PAITRE.—Corolla double white with deep carmine sepals; a beautiful contrast. Extra large. Ea. 15c.

JUPITER.—New giant flowered variety from France. The flowers are of really mammoth size, with very rich violet purple corolla. Tube and sepals bright crimson. Plant a strong, hardy, free grower. Each 15c.



JUPITER FUCHSIA.

FUSCHIA COLLECTION.

Six elegant varieties, our selection, but all different, for 50c, postpaid.



GREVILLE OR SILK OAK.

GREVILLEA.

SILK OAK.—Is one of the quickest growing of any of the ornamental house plants. It is easy to manage, grows rapidly and is pretty in all stages of growth. With its long, drooping, silky foliage, it reminds one of a palm or fern. The young growths are of a light bronze color, the tips being covered with a soft down closely resembling raw silk. Each 15c.

GENISTA.

SHOWER OF GOLD.—A most desirable plant. The drooping branches are covered with delicate sage-green foliage and every twig is tipped with a long raceme of exquisite pea-shaped blossoms of a pure canary color, almost hiding foliage. Each 10c.

JASMINE.

MAID OF ORLEANS.—A beautiful plant of easy culture, fine grower, good bloomer, very fragrant and of elegant waxy-white appearance. Each 20c.

NIGHT BLOOMING.—World famous variety, producing pure white fragrant flowers incessantly. Each 15c.

CAPE JASMINE.—(Gardenia Florida).—A pretty, low-growing evergreen shrub with thick, glossy green leaves and waxy-white double flowers of delicious sweetness, highly valued for winter flowering in the house or conservatory. Each 20c.

GRANDIFLORUM.—An old favorite variety and most satisfactory. Valuable as a plant for winter blooming. Flowers pure white, star-shape. Fragrant. Each 15c.

REVOLUTUM.—A climbing variety with deep yellow single flowers and glossy foliage. A beautiful plant and readily grown. Each 20c.



NIGHT BLOOMING JASMINE.



GRACE PAGE.—Identical with the old standard dark crimson, S. A. Nutt Geranium except in foliage, which is beautifully variegated. The leaves are of dark green, and each bears a border of pure snowy white. Each 20c; per dozen \$2.00.

WM. LANGGUTH.—This new silver-leaved Geranium is a beautiful variety; Flowers are double and a bright red color, showing magnificently against the white foliage. Each 15c.

MRS. POLLOCK.—Magnificent. Green leaf disc, overlaid by beautiful bronze red, belted with bright crimson, outwardly margined with golden yellow. Each 15c.

MARSHAL McMAHON.—Golden yellow, marked with a deep chocolate zone. A splendid bedding variety. Each 15c.

MAD. SALLEROL.—A very compact variety of silver leaf Geranium. Thrifty; leaves green, edged with white. Has a peculiar manner of growth. Each 10c; dozen 85c.

CRYSTAL PALACE GEM.—Yellow, with green disc; fine bedder. Each 10c.

MOUNTAIN OF SNOW.—Finest of this class for ribbon lines or massing; center of leaf bright green, margin broadly marked silver white, scarlet flowers. Each 10c.

DISTINCTION.—Round green leaves with clear black circle. Each 10c.

HAPPY THOUGHT.—A tricolored Geranium with dark green foliage; creamy white center with dark band about the light zone; flowers bright scarlet. Ea. 10c.

GOLDEN CIRCLE.—Green foliage; golden yellow edging; flower scarlet. Ea. 10c.

MRS. PARKER.—A grand new silver-leaved variety with double pink flowers. A unique novelty. Each 25c.

FRAGRANT COLLECTION.—Nutmeg, Rose, Mrs. Taylor, Peppermint, Lemon, Lady Plymouth. A half dozen of the sweetest of the scented varieties of Geraniums for only 50c, postpaid.

IVY LEAF COLLECTION.—Caesar Franck, Jean D'Arc, Chas. Turner, Eden Marchi. One each of the four choicest ivy leaf varieties of Geraniums for only 45c, postpaid.

GERANIUMS.

Geraniums are the most easily grown and satisfactory of all flower plants, and only the rose can vie with them in popularity. We have about 200 varieties growing at our place and test a large number of new sorts every year. After careful comparison we have selected the following as the best:

SINGLE FLOWERED VARIETIES.

Carmen Sylva —Pure White.....	Each 15c
Jacquerie —Crimson Scarlet	Each 15c
Granville —Rose Pink	Each 10c
Yvette Prost —Violet Rose, shaded to White center.....	Each 15c
Phoebe —Bright Rose, shading to Pink center	Each 10c
Black Prince —Dark rich crimson....	Each 10c
Electric —Brilliant Scarlet.....	Each 10c
Mrs. E. G. Hill —Salmon, shaded light at center	Each 10c
Admiration —Salmon, feathered Apricot	Each 15c
Monte Cristo —Light Salmon Pink....	Each 15c
Maxime Kovalevski —Brilliant Orange....	Each 20c
Glorie DeRouges —Bright rich Scarlet....	Each 15c

DOUBLE FLOWERED VARIETIES.

Old Glory —Rosy Pink.....	Each 20c
Blue Beauty —Violet or a Purplish Crimson	Each 25c
Golden Dawn —Orange Scarlet.....	Each 15c
La Favorite —Double Pure White.....	Each 10c
S. A. Nutt —Crimson.....	Each 10c
Trego —Brilliant, dazzling Scarlet....	Each 15c
Brunanti —Vermilion Scarlet.....	Each 10c
Glory de France —Waxy White, with Carmine center	Each 15c
Jules Vasseur —Vermilion Scarlet, with White Eye.....	Each 20c
Double Dryden —Center Coral White, shading to Lilac and Crimson.....	Each 15c
Fleuve Blanc —Semi-double Pure White	Each 15c
Bertha DePresley —Beautiful Light Pink	Each 15c



WM. LANGGUTH GERANIUM.

LANTANA.

We consider this one of the most satisfactory plants grown. It is the flower for everybody, both for outdoor bedding and blooming all winter in the house. It has a flower somewhat resembling the Verbena, borne on a woody, bush-shaped plant. The flowers embrace all shades of orange, sulphur, lilac, red, pink, white etc. changing from one distinct color to another as they increase in age and size.

JAVOI.—The best, largest and freest blooming white variety. Will please everyone. Each 15c.

PERFECTION.—The only Lantana having variegated foliage. Is unusually handsome. Outside rows of florets are pink with rose center; inside florets very light sulphur yellow; orange center. Blooms freely. Each 10c; dozen \$1.00.

GOLD CUP.—A dwarf compact grower, with very pretty lemon yellow flowers, having golden yellow center. Each 10c.

AMIEL.—Semi-dwarf, very compact; fine bloomer; umbel and floret fine size. Reddish orange with yellow center. Recommended for its fine form and masses of bloom. Each 10c.

WEeping.—A beautiful trailing variety, very desirable for planting in hanging baskets, vases, pots or open ground. Bears an immense profusion of lovely clear pink flowers from early summer until late in fall. Everyone delighted with it. Each 15c.

RADIATION.—Semi-dwarf; brilliant red with orange yellow center. Distinct and beautiful blend of color. Ea. 15c.

CORBEILLE D'ARGENT.—Dwarf white. Flowers large and profuse. Strong grower; very attractive. Each 15c.

VERSCOLOR.—When first open flower is cream yellow with red center. Cream gradually changes to pink, but flower is fine at all times. Each 10c.

LEO DEX.—Fine grower. Large round leaves; fine purple red flower. Most desirable. Each 10c.

FLEUR D'OR.—A solid colored flower of orange shade. An old sort but still standard. Each 10c.

RADIANT LANTANA COLLECTION.

Will please any lover of bright flowers. Perfect blossoms in fine variety. Certainly beautiful.

Radiation, Javoi, Amiel, Perfection and Weeping Lantana. One each of five fine shades of color for only 50c, postpaid.

OTAHEITE ORANGE.

An extra fine pot plant, with glossy green leaves, the true fragrant orange bloom and abundant little bright

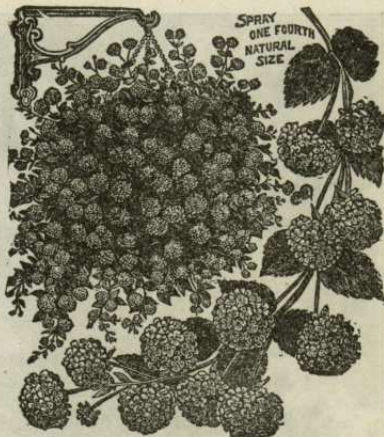
oranges that hang on the little bush like balls of gold for six months after ripe. With good culture are never out of fruit and at

least two-thirds of the time in flower. In beauty, grace, fragrance there is nothing like its delicate, leafy sprays of bloom. Ea. 15c. Large size 50c ea. by express.

PONDEROSA LEMON.

PONDEROSA LEMON.

On a plant six feet high no less than eighty-nine of these ponderous lemons were growing at once. The tree was blooming at the same time and had fruit in all stages of growth, from the size of a pea to ripe fruit, showing it to be a true ever-bearer. Blossoms waxy white and as fragrant as orange blossoms. Fruit has been taken from tree weighing over 4 lbs. Has very thin rind for such large fruit. Makes a delicious lemonade, and for culinary purposes cannot be excelled. Fruits when quite small and makes a lovely house plant. Will fruit freely second year. Strong plants each 15c, postpaid. Large two-year-old plants 50c and 75c each by express.



WEeping LANTANA.



OTAHEITE ORANGE.



LATANIA BORBONICA PALM.

RUBBER TREE.

(*Ficus Elastica*).—During the past year there has sprung up an immense demand for the Rubber Plant and it is highly valued everywhere for its tropical appearance. Leaves are very large, thick and leathery and of a beautiful shining green color. Everybody likes it. They are difficult to propagate and will always remain high in price. Each 50c. Large size \$1.00 and \$1.50 each.

RUBBER TREE (*Ficus Elastica*)**PALM COLLECTION.**

ONE LATANIA BORBONICA, ONE KENTIA, ONE ARECA, ONE PHOENIX, ONE SEAFORTHIA—FIVE FINE PALMS, POSTPAID, FOR 85 CENTS.

PALMS.

The most elegant and highly decorative of all plants and the low prices at which they are now offered place them within the reach of all. The following are the most desirable for house culture:

LATANIA BORBONICA, or Fan Palm.—A most popular variety, prized for its beautiful large fan-shaped leaves of deep, glossy green. Each 25c.

KENTIA BALMOREANA.—Considered one of the hardest and best palms. A rapid grower. Each 25c.

ARECA LUTESCENS.—Truly graceful and beautiful. Strong, upright grower with long, finely cut leaves. Easily grown. Ea. 20c.

PHOENIX CANARIENSIS.

—The date palm. Will be found desirable in the palm collection. Leaves feather-like. Each 20c.

SEAFORTHIA ELEGANS.

Grows more rapidly than most. A beautiful and satisfactory plant. Each 20c.

CYCAS REVOLUTA.—(Sago Palm).

Magnificent and most impressive. Probably the most valuable decorative plant grown; their heavy, glossy deep green fronds resist alike the gas, dust or cold. Strong young plants 50c each, postpaid. Large specimen plants \$1.00, \$2.50, \$5.00, \$10.00 and \$15.00 each, according to size. By express, at purchaser's expense.

BANANA PALM—(*Musa*

Ensete).—Has a majestic tropical effect. The leaves are very long and broad, of a beautiful green, with crimson midrib in striking contrast. An occasional application of liquid manure, and frequent watering are advisable. One at our greenhouse produced fruit this last season, so it is seen they are not difficult to grow. Ea. 25c.

SANSEVERIA.

ZELANICA.—It will grow in a dark, cool room or stand on the mantel in a heated sitting room. Will stand gas or dust and go months without water, yet remains as thrifty as ever. Singularly beautiful, as well as easily grown. Has erect, rigid, sword-like leaves which are thick and fleshy, dark green color, beautifully striped crosswise with white. Each 15c. Large plants 40c.

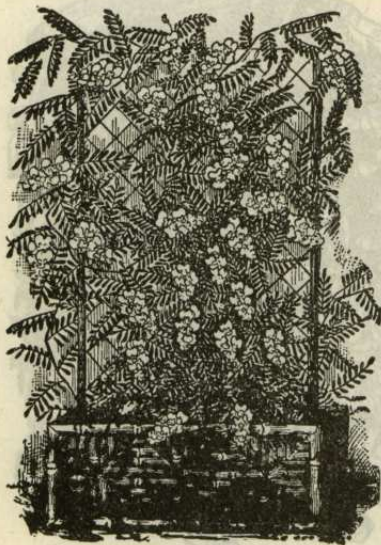
SWAINSONIA.

WHITE.—Habit of growth is extremely graceful, and trained up at the side of a window, or on a trellis, presents a lovely sight of light green, feathery foliage, and a splendid profusion of pure white sprays of flowers resembling Sweet Peas in form. Easily grown. Each 10c

PINK.—Similar to above, except that the flowers are a clear pink color. Each 15c.



SANSEVERIA ZELANICA.



WHITE SWAINSONIA.

GLECOMA.

(Variegated Ground Ivy).—Foliage bright green marked with pure white and has a refreshing fragrance similar to mint. Graceful and beautiful for hanging baskets. A general favorite with all of our customers as there is a continued and steady demand for it. Hardy when planted out, and makes an ornamental, dense mat on the ground. Ea. 10c; dozen 75c.

IVIES.

ENGLISH.—An old favorite vine, showy the year round if properly grown. Each 10c; large 25c.

VARIEGATED ENGLISH.—Foliage is very prettily marked with pure white on a dark green ground. Handsome as a pot plant in the window or for trailing from the sides of boxes or baskets. Each 15c.

KENILWORTH.—An old familiar trailing ivy. Perhaps the best for shaded places or rooms where light is not strong. Each 10c; dozen 75c.

GERMAN.—Well known ivy which is very popular as a plant for hanging baskets and vases. Can be grown with a very little trouble. Each 10c; dozen 75c.

HOYA.

CARNOSA.—(Wax Plant).—A well known house climber, with thick, fleshy leaves and curious waxy flowers, bluish white in color. A favorite for its handsome appearance. It is quite scarce and not always obtainable, but we have a good supply this season. Each 25c.

MANETTA.

BICOLOR.—One of the handsomest little vines easily and quickly grown and well adapted for hanging basket, pot culture, vases or bedding. Flower is of brilliant scarlet, tipped with clear golden yellow. Wonderfully attractive. Blooms constantly and profusely during all the summer months in the house. We heartily recommend this vine to our customers. Each 10c; large 25c.

VINCA MAJOR.

ELEGANTISSIMA.—One of the handsomest vines in existence for growing in window boxes, hanging baskets, trailing from pots, rockeries, etc. The long, trailing stems of glossy green leaves are broadly margined and variegated with white and they are always bright and pretty. Plants are of easiest culture, will stand neglect and mistreatment and grow very rapidly. Does well either in a sunny place or in the shade. Blue flowers. Each 10c; dozen \$1.00. Large size 25c.

WANDERING JEW.

An old well-known trailing plant, nice for growing in hanging baskets, vases, pots or window boxes. Several varieties with variegated foliage. Each 10c, 4 for 25c.

Hanging Basket Collection.

Illustration but poorly depicts the great beauty of a hanging basket filled with appropriate plants, well grown and healthy. In this collection are a half-dozen plants which will give splendid results with little care and may be grown in any home window garden. At the low price it is surely an opportunity.

Boston or Sword Fern.—The most popular decorative plant in entire list. Each 15c.

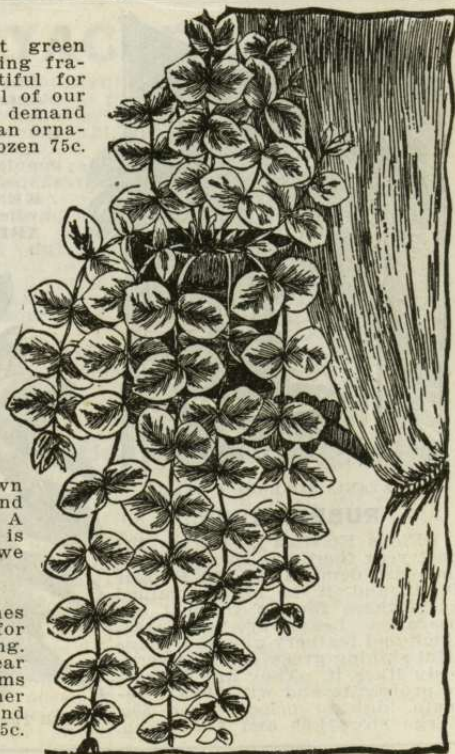
Rex Begonia.—Most beautiful of foliage plants and a source of satisfaction. Each 25c.

Trailing Abutilon.—A trailing variety of a well-known Flowering Maple. Each 15c.

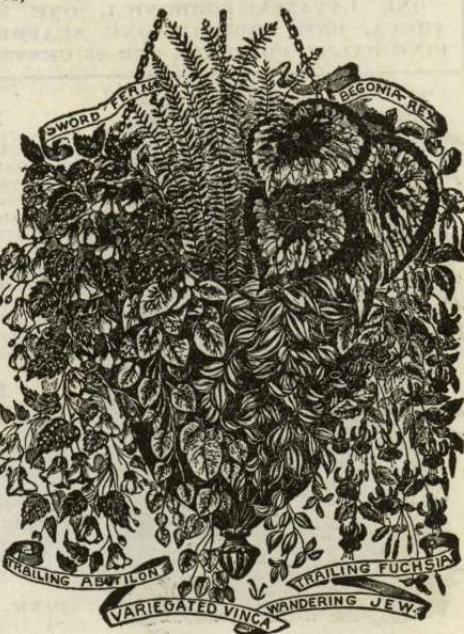
Variegated Vinca.—Most popular vining basket plant in list. A favorite with all. Each 10c.

Trailing Fuchsia.—Adding attractiveness with its beautiful flowers and foliage. Each 15c.

Wandering Jew.—The old-fashioned favorite basket plant. Each 10c. One each of above by mail, postpaid, 60c. Or, if you will pay express charges, will send the six plants and one 9-inch wire hanging basket and moss for lining same, all for 75c.



VINCA ELEGANTISSIMA.



HANGING BASKET COLLECTION.

ROSES.

Varieties Suitable For Indoor Winter Blooming.

AMERICAN BEAUTY.—One of the best and most valuable Roses for house culture. Color rosy crimson, exquisitely shaded and very handsome. Extra large, full flowers and fine buds. A good bloomer. Each 15c; dormant 35c.

BEAUTY INCONSTANT.—Flowers of many shades of pink, red, crimson and yellow on the same bush at once. Each 15c. Two-year-old plants 40c.

BESSIE BROWN.—Creamy white flushed and tinged with pink. Each 20c. Two-year-old plants 40c.

BON SILENE.—Color deep rose varying to lighter shade. Each 20c. Two-year-old 25c.

BRIDE.—A fine pure white cut flower Rose. Each 15c. Two-year-old plants 25c.

BRIDESMAID.—A lovely shade of clear pink. Each 10c. Two-year-old plants 25c.

CHATENAY.—Creamy rose shaded rosy carmine. Each 15c. Two-year-old plants 35c.

COQUETTE DE LYON.—Light canary yellow color. Each 15c. Two-year-old plants 35c.

EMILE GONIN.—Creamy white tinted with orange yellow at the base of petals are reflected and broadly margined with bright carmine crimson. Each 15c. Two-year-old plants 30c.

FRANCISCA KRUGER.—Deep copper yellow; quite unique and distinct from all others. Each 15c. Two-year-old plants 35c.

GOLDEN BEDDER.—The finest golden yellow Tea Rose. By some called Star of Lyons. Each 20c. Two-year-old plants 35c.

GRUSS AN TEPLITZ.—When first opened it is a dark, rich crimson, quickly changing to a bright scarlet. Blooms continually. Each 15c. Two-year-old plants 30c.

GOLDEN GATE.—Creamy white, delicately tinted with golden yellow and bright rose color. Each 10c. Two-year-old plants 25c.

IVORY.—A pure ivory white. A strong grower, vigorous and healthy. Each 10c. Two-year-old plants 25c.

LA DETROIT ROSE.—Color a clear flesh pink, shading to deep rose; fine broad shell-shaped petals, very full and deliciously tea scented. Each 20c.

LIBERTY.—Color is indescribably rich, glowing, dark crimson scarlet. Each 20c. Two-year-old plants 40c.

MAD. DE WATTEVILLE.—The Tulip Rose. In color cream yellow, tinted rose pink. Petals are bordered with crimson. Each 15c. Two-year-old plants 30c.

MALMAISON.—A pink Rose of varied shadings, light blush, rose and deep pink. Each 15c. Two-year-old plants 30c.

MARIE VAN HOUTTE.—Flowers deep, double and canary yellow in color. As flowers mature the color changes to cream with tints of rose. Each 15c. Two-year-old plants 30c.

METEOR.—Color is bright, rich, velvety crimson, a delightful shade and the most popular of colors. Each 10c. Two-year-old plants 25c.

PERLE DES JARDINS.—Fine straw color. Ea. 10c. Two-year-old plants 25c.

FRANCIS E. WILLARD.—Very beautiful new pure white. Each 15c. Two-year-old 35c.
THE QUEEN.—Pure snow white; good, fine formed buds. Ea. 15c. Two-year-old 30c.
RAINBOW.—Color a lovely shade of pink, striped and mottled in a most unique manner with intense crimson and elegantly covered with rich golden amber at center and base of petals. Each 15c. Two-year-old plants 35c.

RICHMOND.—Beautiful scarlet crimson. Each 15c. Two-year-old plants 30c.
RED KAISERIN.—Distinct and pleasing shade of cherry red. A bright, free blooming sort. Each 25c. Two-year-old plants 50c.

SOUVENIR DE WOOTON.—A rich shade of velvety crimson, deliciously fragrant. Each 10c. Two-year-old plants 25c.

SUNRISE.—Difficult to describe. Buds yellow and scarlet and as they open the colors deepen, the yellow changing to orange and copper, while the scarlet grows darker. The inside of petals are golden yellow and the contrasts of the flowers are striking. Each 15c. Two-year-old plants 30c.

SUNSET.—Beautiful old gold color shaded with coppery crimson, with sunset tints. Each 15c. Two-year-old plants 30c.

UNCLE JOHN.—The flowers are fine buff yellow, shading to pink and white, and are fragrant. Each 15c. Two-year-old plants 30c.

VERDIFLORA.—The green Rose that cannot fail to attract attention and causes surprise wherever seen. Deep green petals; free bloomer. Grown as a curiosity. Each 15c.



CHATENAY ROSE.

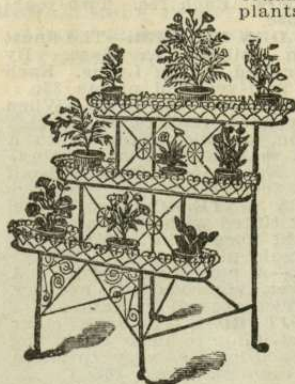
WINDOW GARDEN SUPPLIES.



No. 3.



No. 6.



No. 8.



WIRE WINDOW SHELF.



WIRE BRACKET.

NO. 8.—Holds a large number of plants and all get equal light. Size 42 inches high, 26 inches deep; has three shelves each 36 inches long; will hold about 30 pots. List price \$6.50. Our price only \$5.00.

NO. 9.—Same as No. 8, with arch and basket added. List price \$8.00. Our price \$6.50.

NO. 10.—A very popular stand, well shown by the engraving, but the arch is Gothic pattern, same shape as No. 3. Holds 20 to 30 plants. Height 5 feet 10 inches; width 40 inches, and 26 inches deep. We sell more of these than any other pattern and are thus enabled to make a specially low price. List price \$7.00. Our price, including arch and hanging basket, only \$5.00.

WIRE WINDOW SHELF.—These can be fastened to window frames, either inside or outside. They are strong and attractive, 36 inches long, 6 or 7 inches wide. The border is not as high as shown in the engraving. Price \$1.00 each.

WIRE BRACKET.—This new pattern is a very cheap, handsome bracket, made of tinned wire. It is easily put up, adjustable, can be instantly removed, is simple, practical and durable. Price, 4-inch 10c each, \$1.00 per dozen; 5-inch, 12c each, \$1.25 per dozen; 6-inch, 15c each, \$1.50 per dozen. Postage, each 8c extra.

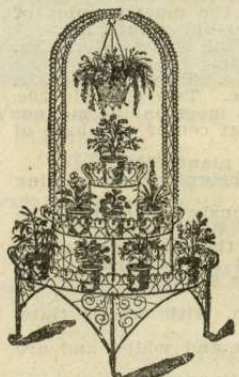
WIRE HANGING BASKET.—Made of wire and lined with moss and filled with dirt they are quite attractive. Light, strong and durable. By express, 8-in., 25c, 10-in. 35c. Postage, each 15c.

HANGING BASKET CHAINS.—Plain 3-strand steel chains each 10c, by mail 18c.

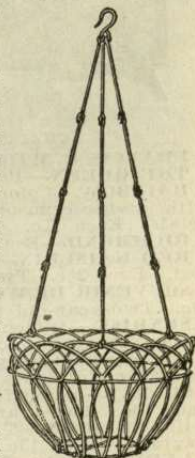
BIRD CAGE HOOKS.—Useful for suspending bird cages or hanging baskets; made of cast iron with screw to fasten in the woodwork or window casing. Each 12c, postpaid.

OUR WINTER WINDOW BARGAIN.

One 36-inch wire window shelf; six 5-inch wire window brackets; one 8-inch wire hanging basket; one hanging basket chain, and one bird cage hook, by express, not prepaid, for only \$1.75.



No. 10.



WIRE HANGING BASKET

SULPHO TOBACCO SOAP.—For a cheap, effective, clean and harmless insecticide for amateur and professional growers this is unexcelled. Quickly exterminates all insect life on plants and flowers in and out of doors. Unsurpassed for rose bushes. For domestic purpose it rids the house of cockroaches, and is a superior wash for dogs and all animals. Prevents poultry lice. A trial will give highly gratifying results. Three-ounce cake, sufficient for $1\frac{1}{2}$ gallons prepared solution, 10c; by mail, postpaid, 13c. Eight-ounce cake, sufficient for four gallons prepared solution, for 20c; by mail, postpaid, 28c.

WHALE OIL SOAP.—An excellent preparation for plants infested by vermin. Also used against fungus diseases and will keep trunks of trees from borers or other bark destroyers. Pound 40c, postpaid.

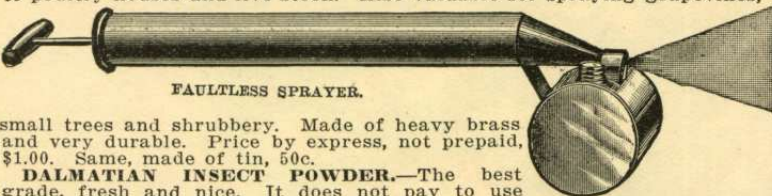
TYRIAN PLANT SPRINKLER.—Fine for house plants. You can without injuring plants or soaking earth, quickly and very effectively sprinkle them. Will keep foliage fresh and healthy and free from insects of all kinds. The bent neck enables you to spray the under sides of the leaves which are hiding places for insects. Each 75 cents, postpaid.

SCOLLAY SPRINKLERS.—Indispensable for floral work. Excellent for washing the foliage of house plants, and used for sprinkling clothes. Large, each \$1.00; small, 60c, postpaid.

BOWKER'S FOOD FOR FLOWERS.—A fertilizer made especially for plants; clean, free from offensive odor, and soluble in water, producing healthy plants and abundant blossoms to which it imparts brilliant color. A box sufficient for 20 plants for one year 25c, or postpaid 40c; small packages 15c. or postpaid 25c.

WALKER'S EXCELSIOR PLANT FOOD.—A soluble food for house plants, containing all the elements necessary to nourish and make beautiful flowers and plants. Large box sufficient for 25 plants one year 25c, or postpaid 40c; small package 15c, postpaid 25c.

FAULTLESS INSECT SPRAYER.—An all brass hand sprayer. Will not rust. The best hand sprayer for applying liquids and insecticides to poultry houses and live stock. Also valuable for spraying grapevines,



FAULTLESS SPRAYER.

small trees and shrubbery. Made of heavy brass and very durable. Price by express, not prepaid, \$1.00. Same, made of tin, 50c.

DALMATIAN INSECT POWDER.—The best grade, fresh and nice. It does not pay to use cheap ordinary grades. Pound 40c, 5 lbs. or more at 35c; postage 16c per pound extra.

TOBACCO DUST.—Destroys rose bugs, lice, cut worms, vine bugs, tomato worms, cabbage lice and parasites of all descriptions. Should be applied when the foliage is wet. Also a most complete fertilizer for plants and vines. Will not burn or injure the plants. Price per lb. 10c, 5 lbs. 25c; 16c per lb. extra if by mail.

ANT EXTERMINATOR.—Ants are apt to become great pests and disfigure the lawns with their piles of dirt. This is a non-poisonous powder which, when sprinkled around, will kill or drive away ants from the lawns, trees, houses, etc. Has proven very satisfactory to our customers. Price 25c; by mail 30c.

STAR INSECT POWDER GUN.—Handy size for house use to blow powder in cracks and crevices. Largely used for killing houseflies. Each 10c, postpaid 13c.

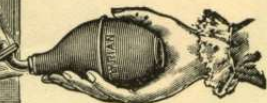
HAMMOND'S SLUG SHOT.—A combination of the most potent insecticides and soluble plant food. It destroys all insects injurious to house and garden plants, shrubs, trees, vines, potatoes, melons, cabbage, currants, vegetables and fruits of all kinds. This preparation, though poisonous to insects, does not injure the foliage in the least. When you order your seeds, if you have not tried Hammond's Slug Shot, order a five or ten-pound package. Not prepaid, 5 lbs. 30c, 10 lbs. 60c, 25 lbs. or more at 5c per lb; postpaid, 1 lb. 25c, 4 lbs. 95c.

HAMMOND'S GRAPE DUST.—A fungicide in light powder form easily dissolved in water. Destroys mildew and blight and kills Aphids and Black Fly. 5 lb. pkg. 50c, by express.

FLUTED FLOWER POTS.—A handsome new pattern. Price is the same as for the common, plain pots, so they are sure to be popular. The following prices per dozen are for the pots and saucers: 4-inch 60c, 5-inch 75c, 6-inch \$1.00, 7-inch \$1.50, 8-inch \$2.40, 9-inch \$3.00. We make no charge for packing or delivering at the depot here. Orders for these must amount to at least \$1.00. Many styles of handsome pots, jardinières and vases and hanging baskets at extremely low prices. A nice plant is deserving of one.



TYRIAN SPRINKLER.



SCOLLAY SPRINKLER.



FLUTED FLOWER POT.

IOWA SEED CO

DES MOINES
IOWA

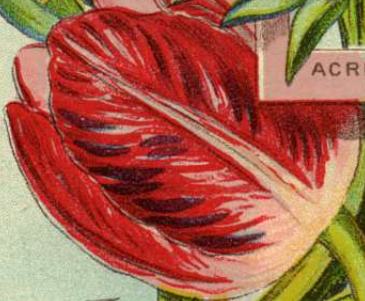


HYACINTHS



LILY OF
THE VALLEY

ACRES OF
PAEONIES



TULIPS

SACKETT
& WILHELMS
LITHO. & PRC. CO.
NEW YORK