

Condensed Seed Catalogue for 1908.

EMERGENCY EDITION.

SPECIAL NOTICE.

In December we published a large Catalogue having beautifully lithographed cover in seven colors, handsome colored plates and hundreds of illustrations. These were mailed to our regular customers in all parts of the country, and about 100,000 were saved for new inquiries. The call for them has been marvelous, and the entire edition was soon exhausted. It takes a long time to print such a book, and the season would be over before we could get another edition out. We are therefore obliged to send you this Condensed Catalogue. It contains an abridged list of our best varieties of Vegetable, Flower and Farm Seeds, Flower Plants, Bulbs, Nursery Stock, etc., and also some special offers on the back cover. Please examine this list carefully and send us at least a trial order. This will insure your receiving a copy of the large illustrated catalogue for 1909, which we expect to make especially attractive.



SUGGESTIONS TO CUSTOMERS.

ORDER EARLY.—The best time to order is just as soon as you receive this catalogue. Please use the order sheet as it makes it more convenient for us in filling orders. Terms are invariably cash with order as we keep no book accounts in our mail order department, and the expense of sending goods C. O. D. is quite large. Postage stamps received as cash.

SHIPPING.—There are five express companies and fifteen railroad lines at Des Moines, so that quick shipments can be made to any place.

CHARGES PREPAID.—All Vegetable and Flower Seeds, Bulbs and Plants, except those noted, are sent prepaid by mail or express by the quickest and most direct routes unless ordered otherwise, and we guarantee their safe arrival. Seeds sold by the peck or bushel, field seeds, potatoes, implements and other heavy goods are sent by freight or express. The terms "by express" and "by freight" mean that goods are shipped at purchaser's expense, not prepaid.

DELIVERY.—The point of delivery of all goods is on cars at Des Moines. When we quote a delivered price it means simply that we prepay the freight, express charges or postage.

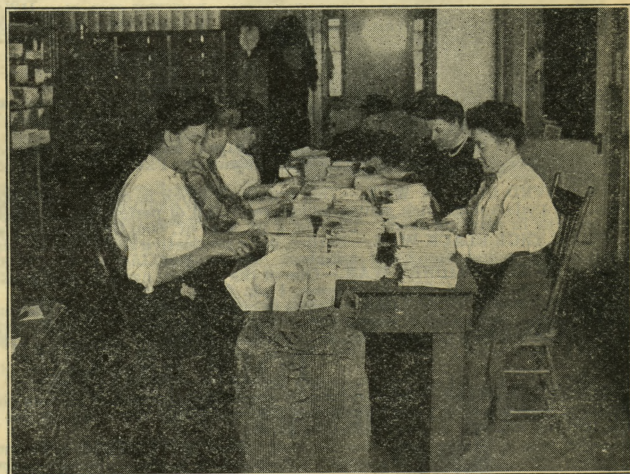
OUR PRICES.—Our constant aim is to make the highest quality the first consideration, and next to put our prices as low as good seed can be sold.

PREMIUMS.—On all orders for seeds in packets the purchaser may select \$1.25 worth for each one dollar sent us. This refers only to seeds in packets, not in bulk and we do not send plants or other goods as a premium on seed orders. This discount does not apply to Collections, of any kind nor other special offers.

OUR RESPONSIBILITY.—As this book will probably go into the hands of many who are unacquainted with us, this question will naturally arise, and in answer to same we refer you, by permission, to the Century Savings Bank, of this city, to the postmaster, or to any express company.

WHAT WE GUARANTEE.—That all money sent us for seed shall reach us if sent by registered letter, P. O. or express money order, or bank draft, made payable to our order. That your order will be filled promptly and well. That goods ordered will reach you safely.

ABOUT WARRANTING.—We thoroughly test all our seeds and nothing is sent out which we do not believe to be good in every respect. We want it plainly understood but that while we exercise great care to have all seeds pure and reliable, and also true to name, we do not give any warranty, express or implied. If the purchaser does not accept the seeds on these terms and conditions, they are to be returned at once, and the money that has been paid for same will be refunded. However, we have so much confidence in our seeds that we hereby agree to refill any retail order for vegetable or flower seeds free of charge should they prove otherwise than as we represent them. We know of no responsible seed firm in the world which guarantees seeds any further than this. Compare with other seed catalogues and you will find that we are right.



A MONDAY MORNING'S MAIL.

Just to help you to realize the size of our business we insert the above photograph taken of the mail as placed on the opening table one Monday morning and the seven young ladies engaged in opening same. On February 17th, 1908, we received 7163 letters and postals, and we are receiving 4000 and upwards every day.

Address Orders to

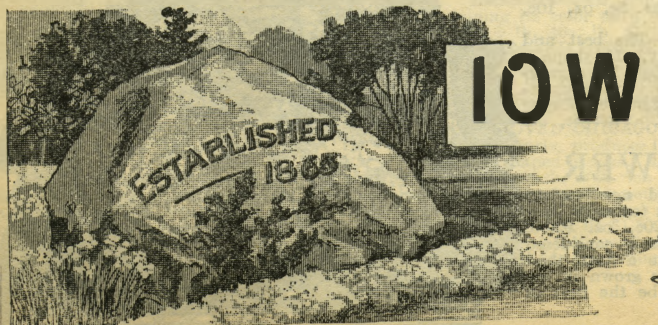
IOWA SEED CO.

STORE—613-615 Locust St.

MAIL ORDER BUILDING—208-212 S. 3d

GREENHOUSES—31st and Kingman Blvd.

Des Moines, Iowa.



VEGETABLE SEEDS



IMPROVED GOLDEN WAX

BUSH BEANS

IMPROVED EARLY VALENTINE.—Very early, robust and vigorous, and produces the true, round, curved pods very abundantly. Unexcelled in quality. Pkt. 5c, $\frac{1}{2}$ pt. 15c, qt. 45c; by express or freight, $\frac{1}{2}$ pk. 85c, pk. \$1.25.

STRINGLESS GREEN POD.—The finely shaped, long green pods are absolutely stringless, and are ready to market two weeks earlier than the Valentines. Pkt. 5c, $\frac{1}{2}$ pt. 15c, qt. 50c, by express, $\frac{1}{2}$ pk. \$1.00, pk. \$1.75.

IMPROVED GOLDEN WAX.—This improved stock is one of the handsomest beans we have ever seen, the pods a dark, rich golden yellow color and of perfect shape. For family or market you make no mistake in planting them. Pkt. 5c, $\frac{1}{2}$ pt. 15c, qt. 50c, by express, $\frac{1}{2}$ pk. \$1.10, pk. \$1.85.

CHALLENGE BLACK WAX.—Earlier, more productive and of better quality than the old Black Wax. Pods tender, round, fleshy and stringless. Pkt. 5c, $\frac{1}{2}$ pt. 15c, qt. 50c, by express, $\frac{1}{2}$ pk. \$1.10, pk. \$1.85.

WARDWELL'S KIDNEY WAX.—One of the earliest, hardiest and most productive of all wax beans. Pkt. 5c, $\frac{1}{2}$ pt. 20c, qt. 60c; by express, $\frac{1}{2}$ pk. \$1.25, pk. \$2.25.

HENDERSON'S BUSH LIMA.—Grows in compact bush form, producing enormous crops of delicious Lima beans. Enormously productive. Pkt. 5c, $\frac{1}{2}$ pt. 20c, qt. 60c; by express, $\frac{1}{2}$ pk. \$1.25, pk. \$2.25.

BURPEE'S BUSH LIMA.—Pkt. 5c, $\frac{1}{2}$ pt. 20c, qt. 60c, by express $\frac{1}{2}$ pk. \$1.35, pk. \$2.50.

POLE BEANS

GOLDEN CLUSTER WAX.—Generally considered the best of all wax pole beans. It bears profusely its long, golden yellow pods from the middle of July till the vines are cut by frost. Pkt. 5c, $\frac{1}{2}$ pt. 15c, qt. 50c, by express, $\frac{1}{2}$ pk. \$1.15, pk. \$2.00.



OLD HOMESTEAD.—Enormously productive, the pods hanging in great clusters. Entirely stringless; pods are of a silvery green color. Can be grown with corn to good advantage. Pkt. 5c, $\frac{1}{2}$ pt. 15c, qt. 45c; by express $\frac{1}{2}$ pk. \$1.00; pk. \$1.75.

LAZY WIFE.—The most popular pole bean. The pods, of medium dark-green color, are produced in great abundance, and measure from 4 $\frac{1}{2}$ to 6 inches in length. The pods retain their rich, tender and stringless qualities until nearly ripe. Pkt. 5c, $\frac{1}{2}$ pt. 20c, qt. 60c, by express $\frac{1}{2}$ pk. \$1.25, pk. \$2.25.

CUT SHORTS.—Pkt. 5c, $\frac{1}{2}$ pt. 15c, qt. 45c, express, $\frac{1}{2}$ pk. 90c, pk. \$1.60.

BEETS

EARLY CRIMSON GLOBE.—A very early variety, of spherical form. Cooks readily, is very fine grained, and flavor cannot be surpassed. Of uniform shape and size. Pkt. 5c, oz. 10c, $\frac{1}{2}$ lb. 25c, lb. 75c.

CROSBY'S IMPROVED EGYPTIAN.—A great improvement on the old Egyptian, being thicker, handsomer and more regular in shape, smooth with very small tops and small tap root. Very popular with Des Moines Market gardeners for this purpose. Pkt. 5c, oz. 10c, $\frac{1}{2}$ lb. 25c, lb. 70c.

MARKET GARDENERS'.—The best and most profitable table variety. Its shape is well illustrated by the accompanying engraving. As will be noticed it is very symmetrical, with small tap root and but few fibrous roots. Unusually small tops. Pkt. 5c, oz. 10c, $\frac{1}{2}$ lb. 25c, lb. 75c.

CAULIFLOWER

DANISH GIANT.—A grand new variety of extra large size and about ten days later than the Snowball. Pkt. 20c, oz. \$2.50.

HENDERSON'S EARLY SNOWBALL.—Throughout the country this is considered not only the earliest of all cauliflowers, but it is more certain to make a head than any other sort. Our stock is extra choice, and cannot be excelled. It is grown in the locality where this variety originated, by a grower whom we believe to be the best in the world. Pkt. 15c, $\frac{1}{2}$ oz. 65c, oz. \$2.25.

EXTRA EARLY DWARF ERFURT.—Pkt. 10c, $\frac{1}{2}$ oz. 50c, oz. \$1.75.

EARLY PARIS.—Pkt. 5c, oz. 50c.

Our stock of vegetable seeds we are sure cannot be excelled either in quality or selection by any firm in the country, as we watch our growing crops with great care, taking pains to isolate and keep pure and true to name. Every variety listed is desirable and has our recommendation. The packets are, we believe, as well filled as any reliable seed dealers in the United States, and in fact a comparison has shown that they contain more seed on the average, than those of any other firm whose packets we have secured. We pay the postage at these prices, except on Beans, Peas and Corn at the peck or bushel rates.

NOTICE.—We thoroughly test all our seeds and nothing is sent out which we do not believe to be good in every respect, but we want it plainly understood that while we exercise great care to have all seeds pure and reliable, and also true to name, we do not give any warranty, express or implied. If the purchaser does not accept the seeds on these terms and conditions, they are to be returned at once, and the money that has been paid for same will be refunded. No officer, agent or employee of this company is authorized to make any warranty whatsoever. However, we have so much confidence in our seeds that we hereby agree to re-fill any retail order for vegetable or flower seeds free of charge should they prove otherwise than as we represent them. We know of no responsible seed firm in the world which guarantees seeds any further than this.

ASPARAGUS

COLUMBIAN MAMMOTH WHITE.—Produces shoots which are white and stay white as long as fit for use. Per pkt. 5c, oz. 10c, $\frac{1}{2}$ lb. 25c, lb. 75c.

PALMETTO.—Pkt. 5c, oz. 10c, $\frac{1}{2}$ lb. 20c, lb. 50c.

CONOVER'S COLOSSAL.—The standard variety. Pkt. 5c, oz. 10c, $\frac{1}{2}$ lb. 15c, lb. 40c.

BORECOLE OR KALE

EXTRA CURLED MOSBACH.—Pkt. 5c, oz. 15c, $\frac{1}{2}$ lb. 40c, lb. \$1.25.

DWARF GERMAN GREEN or SIBERIAN.—Popular. Pkt. 5c, oz. 10c, $\frac{1}{2}$ lb. 25c, lb. 75c.



HENDERSON'S SNOWBALL CAULIFLOWER



CABBAGE

EXTRA EARLY EXPRESS.—The earliest variety in existence. Heads are solid, have few outside leaves, and can therefore be planted very close and yield a large crop. It is a most important variety for the gardener. Pkt. 5c, oz. 15c, ½ lb. 30c, lb. \$1.75.

ALL-HEAD EARLY.—At least a week earlier than any of the various strains of ear summer cabbage; fully 1-3 larger, of perfect shape and most solid variety on the list. Pkt. 5c, oz. 20c, ½ lb. 60c, lb. \$2.50.

EARLY JERSEY WAKEFIELD.—Considered by many gardeners the very best first early variety. Of large size for so early a kind. Heads hard and solid, and have few outside leaves. Our seed is the highest quality, American grown. Pkt. 5c, oz. 20c, ½ lb. 70c, lb. \$2.25.

NEW WASHINGTON WAKEFIELD.—This grand variety is a trifle later than Jersey Wakefield, but produces much larger heads which are of perfect pyramidal shape, very solid, and with few outside leaves. One cabbage grower who is enthusiastic in its praise says: "It is first in head, first in market, and first in the hearts of gardeners." Grows remarkably uniform, the heads are of even size and shape. Unequaled for market or family garden. Pkt. 5c, oz. 25c, ½ lb. 85c, lb. \$2.75.

WINNINGSTADT.—Pkt. 5c, oz. 10c, ½ lb. 35c, lb. \$1.25.

SUREHEAD.—Never fails to make a remarkably fine, solid, large head with few outer leaves. Pkt. 5c, oz. 20c, ½ lb. 60c, lb. \$2.00.

IOWA SEED CO'S SHORT-STEM DRUMHEAD.—For sureness in heading, regularity of growth and even, large, solid heads, it far surpasses any other strain of late cabbage which we have seen, ripening evenly with very short stem or stalk, and large thick heads of silky fine quality and of best keeping properties.

It is almost all head and always sure to head. Pkt. 5c, oz. 20c, ½ lb. 60c, lb. \$2.00.

PREMIUM FLAT DUTCH.—The old standard winter kind. Pkt. 5c, oz. 15c, ½ lb. 50c, lb. \$1.50

IMPROVED DANISH BALLHEAD.—or Hollander.—Heads round, good sized, solid and very fine grained. Has but few outer leaves. A good keeper, tender and crisp, with but little waste heart. Pkt. 5c, oz. 25c, ½ lb. 75c, lb. \$2.50.

PERFECTION DRUMHEAD SAVOY.—The Savoy or curly cabbages are of finer flavor and quality than other kinds. Pkt. 5c, oz. 20c, ½ lb. 35c, lb. \$2.00.

MAMMOTH RED ROCK.—Pkt. 5c, oz. 25c, ½ lb. 75c, lb. \$2.50.

CELERY

This we consider one of the luxuries of the garden. For first crop sow the seed early in hotbeds or in boxes in the house, in rich, moist soil, covering the seed very lightly. For main crop sow seed in open ground in April or as soon as the soil is in good condition. Seed germinates slowly and if the weather is hot and dry protect with light covering of hay or straw.

GOLDEN SELF-BLANCHING.—This is by far the most popular variety now on the market. It is of medium earliness, of dwarf, compact habit, with thick, solid, heavily ribbed stalks, which blanch easily to a clear waxen yellow. When grown in rich, moist soil, the stalks are numerous and large with a solid heart of beautiful yellow. Pkt. 5c, oz. 25c, ½ lb. 90c, lb. \$3.25.

WHITE PLUME.—Stalks, portions of the inner leaves and heart naturally white, and become fit for use by simply tying it up closely with soft twine. More used than any other variety by market gardeners. Our seed is of highest quality. Pkt. 5c, oz. 15c, ½ lb. 50c, lb. \$1.75.

GIANT PASCAL.—One of the best for fall and winter use. The stalks are very large, solid, crisp and of a rich, nutty flavor. It blanches very easily and quickly. Pkt. 5c, oz. 15c, ½ lb. 50c, lb. \$1.50.

HENDERSON'S HALF DWARF.—Entirely solid, possessing a rich, nutty flavor. Pkt. 5c, oz. 15c, ½ lb. 40c, lb. \$1.25.

WINTER QUEEN.—The finest dwarf winter celery. Of a rich green coloring, like the Giant Pascal; fine flavor, best table quality; keeps until May. Pkt. 5c, oz. 25c, ½ lb. 85c.

GOLDEN DWARF.—Golden yellow, solid, crisp. Pkt. 5c, oz. 15c, ½ lb. 40c, lb. \$1.25.

CELERIAC.—or Turnip Rooted Celery.—Pkt. 5c, oz. 20c, ½ lb. 60c.

CUCUMBER

DAVIS PERFECT.—A very desirable new sort. It is a sure money maker for those engaged in growing cucumbers under glass "for profit" as well as for truck gardeners who grow their crop out of doors. In color, a dark, glossy green; shape, slim and symmetrical, with an average length of ten to twelve inches. The quality is fine, as the seeds are very soft when the cucumber is fit for table use, is very tender and brittle and of exceptionally good flavor. It is medium early and very productive. Pkt. 10c, oz. 20c, ½ lb. 65c, lb. \$1.75.

EARLY EXPRESS.—The earliest variety of all and also of very superior quality. Pkt. 10c, oz. 20c, ½ lb. 60c, lb. \$1.75.

EARLY CLUSTER.—Fruits of the slim form for pickling. It is extra prolific. Pkt. 5c, oz. 10c, ½ lb. 25c, lb. 75c.

PERFECT WHITE SPINE.—Fruit even and good size, straight, well formed and symmetrical. It is of uniform shape, making it unexcelled for pickling. Immensely productive and keeps solid and crisp for a long time. Pkt. 5c, oz. 10c, ½ lb. 25c, lb. 85c.

EMERALD.—Of rich, dark green color, retaining its color until fully ripe. Pkt. 5c, oz. 15c, ½ lb. 40c, lb. \$1.25.

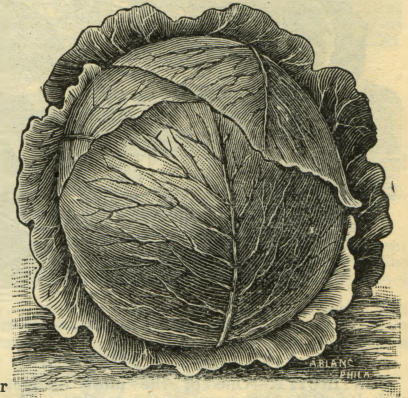
IMPROVED LONG GREEN.—A standard sort. Vine vigorous and productive, forming fruit fine for the table nearly as early as the short sorts; firm fruit, about 12 inches long. Pkt. 5c, oz. 10c, ½ lb. 25c, lb. 90c.

IMPROVED CHICAGO PICKLE.—Very prolific matures early, produces immense number of desirable shaped pickles. Pkt. 5c, oz. 10c, ½ lb. 25c.

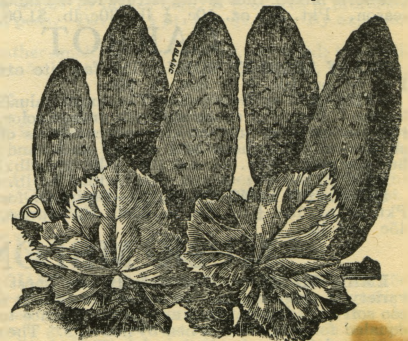
GOLDEN SELF BLANCHING CELERY.

JAPANESE CLIMBING.—Vines are of healthy, vigorous growth, with rich dark green foliage, and throw out strong, grasping tendrils which enable it to climb trellis, wire netting, brush or any other and netted when ripe; excellent for slicing. Pkt. 5c, oz. 15c, ½ lb. 50c, lb. \$1.50.

IMPROVED BISMARK.—An excellent variety with very long fruit pointed at both ends, very uniform in shape, size and color, thus making it an excellent sort for marketing. Holds its dark green color well. Pkt. 5c, oz. 10c, ½ lb. 30c, lb. \$1.00.



I. S. CO'S SHORT STEM DRUMHEAD



IMPROVED CHICAGO PICKLE

SWEET CORN

EARLY SUNRISE.—The earliest of all and decidedly the best early corn. Ears about six inches long, well filled out at end, and husk covering so completely and being so tight as to prevent working of worms. Grains fairly deep and set in straight rows on small white cob; very uniform and handsome. Quite productive and as good flavor as any corn we ever tasted. Pkt. 5c, $\frac{1}{2}$ pt. 15c, qt. 50c, postpaid. By freight, $\frac{1}{2}$ pk. 75c, pk. \$1.25.

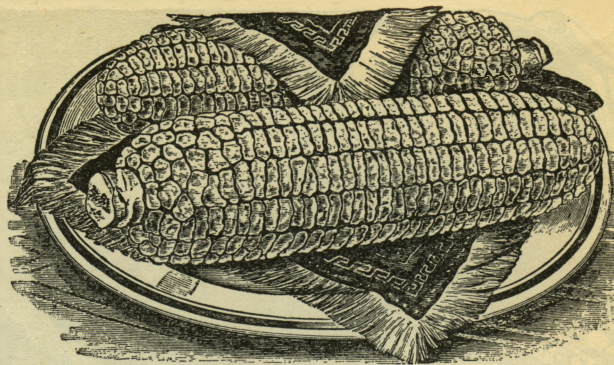
PEEP O' DAY.—Ears five inches long, perfect form, and well filled. The corn is tender and sweet. You will make no mistake in planting some of it for first early. Pkt. 5c, $\frac{1}{2}$ pt. 15c, qt. 40c. By express, $\frac{1}{2}$ pk. 75c, pk. \$1.25.

EXTRA EARLY CORY.—For first early market. It is of dwarf growth and yields well; ears of medium size. Pkt. 5c, $\frac{1}{2}$ pt. 12c, qt. 35c. By express, $\frac{1}{2}$ pk. 65c, pk. \$1.20.

EARLY MINNESOTA.—A standard early variety. Pkt. 5c, $\frac{1}{2}$ pt. 10c, qt. 30c. By express, $\frac{1}{2}$ pk. 50c, pk. 85c.

CHAMPION EARLY.—Without doubt the earliest large corn ever introduced, maturing only a few days later than small eared sorts and producing large, 12-rowed ears 8 to 10 inches long. Pkt. 5c, $\frac{1}{2}$ pt. 15c, qt. 35c. By express, $\frac{1}{2}$ pk. 65c, pk. \$1.20.

COUNTRY GENTLEMAN.—An improvement on the old favorite Shoe Peg Sweet Corn. 3 to 5 ears to a stalk. The cob is small, giving great



EARLY SUNRISE SWEET CORN

depth to kernels which are pearly white, and surprisingly sweet and tender. Pkt. 5c, $\frac{1}{2}$ pt. 15c, qt. 40c. By express, $\frac{1}{2}$ pk. 85c, pk. \$1.50.

IMPROVED STOWELL'S EVERGREEN.—The most prominent main crop variety. The ears are medium to large size; grains are deep; exceptionally tender and remain a long time in an edible condition. Pkt. 5c, $\frac{1}{2}$ pt. 12c, qt. 35c. By express, $\frac{1}{2}$ pk. 65c, pk. \$1.20.

PHARAOH'S DREAM.—The most productive variety. Pkt. 10c, $\frac{1}{2}$ pt. 20c, qt. 50c. By express, $\frac{1}{2}$ pk. 85c, pk. \$1.50.

MUSK MELON—Continued

GRAND RAPIDS.—Extremely early. The flesh is pure yellow clear to the rind; skin finely netted. Pkt. 5c, oz. 10c, $\frac{1}{4}$ lb. 30c, lb. \$1.00.

THOROUGHbred ROCKY FORD.—This variety which is well shown by our illustration, has everywhere been in great demand by the high-class hotels and restaurants. Hundreds of car-loads of them have been shipped from the little town of Rocky Ford, Colorado, to Chicago, St. Louis, New Orleans, Philadelphia, Newport, Boston and other cities, driving out the home grown. The melons are of just the right size for table use, slightly oval in shape. The flesh is thick, of a light green color, and a fine, juicy, luscious flavor. Our seed is saved from choice specimens in the crop of the best melon grower at Rocky Ford who grows the Thoroughbred or pedigree stock of this variety. Pkt. 5c, oz. 15c, $\frac{1}{4}$ lb. 40c, lb. \$1.25.

ORDINARY ROCKY FORD.—A good quality but not equal to the above. Pkt. 5c, oz. 10c, $\frac{1}{4}$ lb. 25c, lb. 70c.

WATER MELON

COLE'S EARLY.—It is very early and will mature farther north than most other sorts. Of medium size, very productive. Flesh of bright red color, of granulated, sparkling appearance; lusciously sweet. Pkt. 5c, oz. 10c, $\frac{1}{4}$ lb. 25c, lb. 75c.

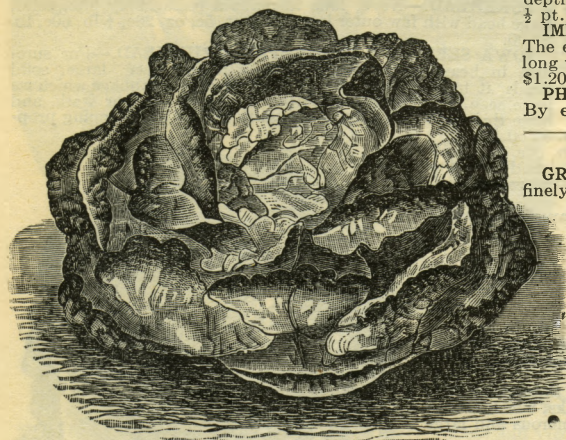
PEERLESS.—Very early of medium size, thin rind, flesh bright scarlet. Pkt. 5c, oz. 10c, $\frac{1}{4}$ lb. 20c, lb. 50c.

IMPROVED TRIUMPH.—Undoubtedly the largest of all melons, having been grown to the extraordinary weight of 149 $\frac{1}{2}$ lbs. Flesh is dark red, solid and of excellent quality. Pkt. 5c, oz. 10c, $\frac{1}{4}$ lb. 25c, lb. 75c.

MONTE CRISTO, or Klekley's Sweets.—One of the sweetest, juiciest, most delicious melons in existence, and it is especially desirable for the private family. Pkt. 5c, oz. 10c, $\frac{1}{4}$ lb. 25c, lb. 75c.

KOLB'S GEM.—Nearly round, and the color is a dark green with lighter narrow stripes. Pkt. 5c, oz. 10c, $\frac{1}{4}$ lb. 20c, lb. 50c.

MCIVER'S WONDERFUL SUGAR.—Famous for sweetness and high quality. The fruits are long, and of large size, averaging about 35 lbs. each. Flesh is delicate light red, entirely stringless and the most tender, juicy and luscious that can be imagined. Pkt. 5c, oz. 10c, $\frac{1}{4}$ lb. 25c, lb. 75c.



NEW CONTINUITY LETTUCE

LETTUCE

CONTINUITY.—One of the most distinct and desirable sorts now on the market. The outside leaves are of a very dark brown color tinged with purple, while the inside of the head is a fine creamy white, tender, crisp and well flavored, making it in all respects a very desirable sort. Per pkt. 10c, oz. 25c, $\frac{1}{4}$ lb. 75c.

IMPROVED HANSON.—For general use both of market gardeners and in the private garden; we are sure that no variety can surpass our improved, carefully selected strain of Hanson Lettuce. Heads are very large, green outside and nearly white within, crisp and tender, and almost absolutely free from rank or bitter taste. Resists the summer heat exceptionally well. Pkt. 5c, oz. 10c, $\frac{1}{4}$ lb. 30c, lb. \$1.00.

EARLY CURLED SIMPSON.—An improved variety of Curled Silesa; large, loose heads; fine flavor. Pkt. 5c, oz. 10c, $\frac{1}{4}$ lb. 25c, lb. 75c.

PRIZE HEAD.—Very tender leaves of dark reddish brown color variegated with dark green. Pkt. 5c, oz. 10c, $\frac{1}{4}$ lb. 25c, lb. 80c.

BLACK SEEDED SIMPSON.—Nearly double the size of ordinary Curled Simpson. Stands the summer well without becoming tough or running to seed quickly. It is by far the most popular variety for greenhouse forcing, making large, handsome heads in a very short time. Pkt. 5c, oz. 10c, $\frac{1}{4}$ lb. 30c, lb. 90c.

MIXED VARIETIES.—Seeds of about 20 early, medium and late sorts mixed, thus giving lettuce for the table during the entire season. Pkt. 5c, oz. 10c, $\frac{1}{4}$ lb. 30c, lb. \$1.00.

CARROT

EARLY SCARLET HORN.—The favorite extra early variety. Pkt. 5c, oz. 10c, $\frac{1}{4}$ lb. 30c, lb. 90c.

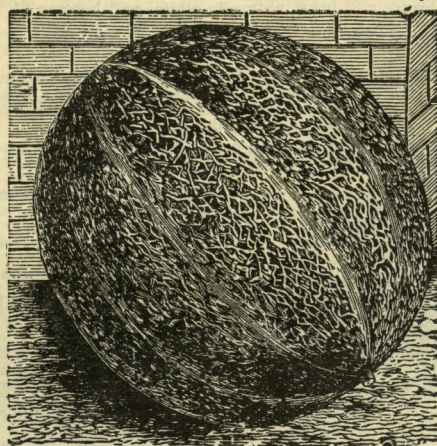
OXHEART, or Guerande.—The most valuable variety in existence. Beautiful shape and rich orange color. It will produce roots as early as any variety and continues of the best quality all season. For hogs and other stock and has yielded 1,200 bu. per acre. Pkt. 5c, oz. 10c, $\frac{1}{4}$ lb. 25c, lb. 75c.

DAVE S.—Pkt 5c, oz. 10c, $\frac{1}{4}$ lb. 20c, lb. 65c.

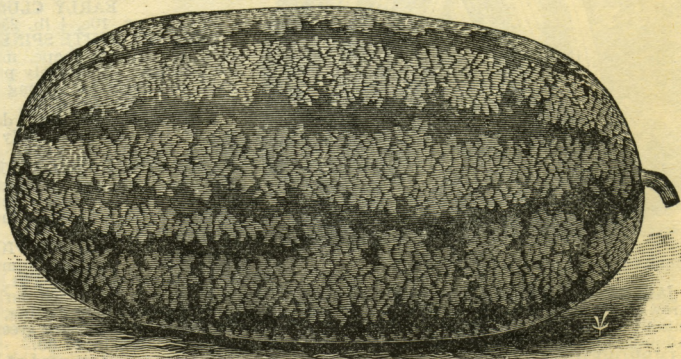
IMPROVED LONG ORANGE.—Desirable for garden or field. Pkt. 5c, oz. 10c, $\frac{1}{4}$ lb. 20c, lb. 65c. By express, 5 lbs. or more at 45c per lb.

MUSK MELON

EMERALD GEM.—Undoubtedly the finest in flavor of any variety of musk melon. It is also the earliest to ripen and while too soft to stand shipping any great distance to market, it is unequalled for home use or nearby markets. The melons are rather small and flattened at both ends. The skin is a rich, deep emerald green. Pkt. 5c, oz. 15c, $\frac{1}{4}$ lb. 40c, lb. \$1.25.



ROCKY FORD MUSK MELON



MCIVER'S WONDERFUL SUGAR MELON

ONION

Good onion seed is of the utmost importance as they are one of the most important crops grown, both in market and family gardens and there is no other vegetable where the quality of the seed exerts a greater influence upon the crop than onions. There is more money in onions grown from seed than almost any other crop. Fully realizing this, we have for many years made a specialty of onion seed which is all grown from choice, selected bulbs, critically examined before being set out for seed. In vitality it is very strong, being carefully tested, and we are sure that **OUR ONION SEED CANNOT BE EXCELED** in purity, vitality or high quality.

EXTRA EARLY RED.—Matures very early. Of medium size, flat shape, deep red in color; very close grained, solid and heavy. This will often form bulbs in cold and mucky soils where other varieties fail. Pkt. 5c, oz. 20c, $\frac{1}{2}$ lb. 60c, lb. \$2.00.

LARGE RED WETHERSFIELD.—The standard sort throughout the west, as they are the most hardy, and immense crops can be raised when more tender sorts are not profitable. Growers who prefer the red varieties will find this magnificent strain of finest form, skin deep purplish red, flesh purplish white, finer grained than many of the red sorts. Our seed of this variety is extra select and cannot be excelled. Pkt. 5c, oz. 15c, $\frac{1}{2}$ lb. 50c, lb. \$1.85.

EXTRA EARLY BARLETTA.—This is the very earliest onion in cultivation. They are of pure paper white color, very mild and delicate in flavor. For table use and pickling it is most valuable. Pkt. 5c, oz. 15c, $\frac{1}{2}$ lb. 50c, lb. \$1.75.

YELLOW GLOBE DANVERS.—A very handsome, round variety of large size, with thin, yellow skin, white flesh, fine grained, mild, very firm and the best of keepers. This is one of the best cropping varieties in existence, has yielded 1,000 bushels per acre, and one of our customers states that his crop averaged over 800 bushels per acre for 9 years. Pkt. 5c, oz. 20c, $\frac{1}{2}$ lb. 65c, lb. \$2.25.

SOUTHPORT RED GLOBE.—Handsome variety and is deserving of general cultivation. It is medium early, grows to a large size, skin deep red, flesh fine grained, mild and tender. Pkt. 5c, oz. 20c, $\frac{1}{2}$ lb. 70c, lb. \$2.50.

LARGE WHITE GLOBE.—The handsomest market variety in existence, making beautiful, clean, pure, silvery white bulbs of large, even size, globe-shaped, mild and pleasant flavor, and out-sells every other variety. Pkt. 10c, oz. 35c, $\frac{1}{2}$ lb. \$1.20, lb. \$4.00.

WHITE PORTUGAL or SILVER SKIN.—The standard white variety. Bulbs grow to good size, ripening early and quite evenly. It is a good keeper. The best onion for pickling. Pkt. 5c, oz. 25c, $\frac{1}{2}$ lb. 80c, lb. \$2.75.

MAMMOTH PRIZETAKER.—Without doubt the largest, handsomest, finest flavored, and in every way the best variety of yellow onion in the world. It is admittedly the largest of all varieties, having been grown to the enormous weight of over six pounds, and it is with all a handsome, fine-flavored sort. To grow the largest size, sow seed early in hotbeds and transplant to open ground as soon as weather is favorable. Pkt. 5c, oz. 20c, $\frac{1}{2}$ lb. 60c, lb. \$2.00.

PARSLEY

MARKET GARDENERS.—An extra choice stock with dark green, beautifully curled, mossy leaves. Valuable for either garnishing or flavoring. Pkt. 5c, oz. 15c, $\frac{1}{2}$ lb. 45c, lb. \$1.25.

CHAMPION MOSS CURLED.—Pkt. 5c, oz. 10c, $\frac{1}{2}$ lb. 25c, lb. 65c.

are vigorous with a great profusion of very large pods, filled with large sized peas of superior quality and very sweet. Pkt. 5c, $\frac{1}{2}$ pt. 12c, qt. 40c, by express $\frac{1}{2}$ pk. 90c, pk. \$1.50.

TELEPHONE.—Immensely productive, of the finest quality and excellent sugary flavor. The pods are of large size, with six or seven large delicious peas. Pkt. 5c, $\frac{1}{2}$ pt. 15c, qt. 50c. By express, $\frac{1}{2}$ pk. \$1.00, pk. \$1.75.

NOTT'S EXCELSIOR.—A superb new variety, and we are sure our customers will welcome it as an ideal family garden pea. It is fully as sweet and delicious as the American Wonder and grows one-half taller. Pods are larger and it is far more productive than the Premium Gem, and it is within a day or two as early as the first early smooth peas. Pkt. 5c, $\frac{1}{2}$ pt. 15c, qt. 50c. By express, $\frac{1}{2}$ pk. \$1.00, pk. \$1.75.

IMPROVED STRATAGEM.—Late variety for family or market use. Half dwarf, vigorous, branching habit. Pkt. 5c, $\frac{1}{2}$ pt. 15c, qt. 50c. By express, $\frac{1}{2}$ pk. \$1.20, pk. \$2.00.

AMERICAN WONDER.—Of dwarf and robust habit, growing about 10 inches high, it produces a profusion of good-sized, well-filled pods fairly packed with the finest flavored peas. Pkt. 5c, $\frac{1}{2}$ pt. 15c, qt. 45c. By express, $\frac{1}{2}$ pk. \$1.00, pk. \$1.75.

ALASKA.—Pods rather small, dark green color, well filled; the earliest pea known. Pkt. 5c, $\frac{1}{2}$ pt. 15c, qt. 45c. By express, $\frac{1}{2}$ pk. 85c, pk. \$1.50.

FIRST AND BEST.—A standard first early. Pkt. 5c, $\frac{1}{2}$ pt. 12c, qt. 40c. By express $\frac{1}{2}$ pk. 60c, pk. \$1.00.

IOWA CHALLENGE.—An extra early variety of superior merit which is a favorite with Des Moines market gardeners. It is not only extra early and prolific, but it is of good flavor. All the good qualities of the Extra Early are most nearly brought to perfection in the Challenge. Height 18 inches. Pkt. 5c, $\frac{1}{2}$ pt. 15c, qt. 40c. By exp. $\frac{1}{2}$ pk. 90c, pk. \$1.50.

OKRA, or GUMBO

WYRICK'S NEW GIANT.—A great improvement. Pkt. 10c, oz. 25c. **WHITE VELVET.**—Pods round, smooth and of an attractive white velvety appearance, very tender and of a superior flavor. In the south where Okra is grown by almost every one, this is considered the choicest quality. Plant dwarf and very productive. Pkt. 5c, oz. 10c, $\frac{1}{2}$ lb. 25c, lb. 75c.



NEW AMERICAN
CROP. ONION SEED

ONION SETS

Indispensable for early onions for bunching as in a very few weeks the are ready for the table.

WHITE BOTTOM SETS.—Best for early use and large onions. 20c, qt. 30c, postpaid; not prepaid, pk. 90c, bu. \$3.25.

YELLOW BOTTOM SETS.—Like the White, except color. More used than any other kind. Pt. 15c, qt. 30c, not prepaid, pk. 90c, bu. \$3.00.

RED BOTTOM SETS.—Pt. 15c, qt. 30c, not prepaid, pk. 90c, bu. \$3.00.

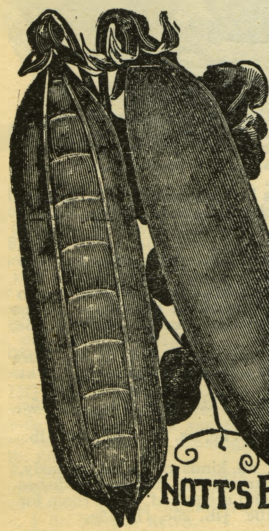
PEAS

PREMIUM GEM.—Early and prolific; a type of and an improvement on the McLean's Little Gem. Pods long and of dark green color. The most popular sort for family use. Pkt. 5c, $\frac{1}{2}$ pt. 12c, qt. 40c; by exp. $\frac{1}{2}$ pk. 90c, pk. \$1.50.

GRADUS, or Prosperity.—One of the finest peas for family use. This remarkable pea is not only large and of the best quality but it is nearly or quite as early as the small, round, extra early sorts. The pods are of a bright green color and measure 4 inches or more in length, as large as Telephone, and equally well filled with luscious Peas. It is a grand Pea in all respects. Pkt. 10c, $\frac{1}{2}$ pt. 20c, qt. 55c. By exp. $\frac{1}{2}$ pk. \$1.50, pk. \$2.50.

DWARF CHAMPION.

A great improvement on the old Champion of England, which has been one of the sweetest, best, and most popular varieties for the last thirty years. The old variety is very tall (6 feet), while this new sort grows only 2 $\frac{1}{2}$ ft., and still the vines



NOTT'S EXCELSIOR





NEW ATLAS PUMPKIN

PARSNIPS

IMPROVED TABLE GUERNSEY.—A greatly improved and wonderfully fine strain of the Guernsey Hollow Crown Parsnip. The roots are shorter, but of greater diameter and more easily gathered. The flesh is fine grained, sweet and of excellent quality; cooks evenly. Pkt. 5c, oz. 10c, $\frac{1}{2}$ lb. 25c, lb. 60c.

PEPPER

RUBY KING.—Very large size, $4\frac{1}{2}$ to 6 inches long, of a beautiful bright ruby red color and remarkably mild and pleasant. Pkt. 5c, oz. 20c, $\frac{1}{2}$ lb. 65c.

CHINESE GIANT.—A fine, mild Red Pepper of enormous size, magnificent appearance and brilliant, glossy, scarlet color. Pkt. 10c, oz. 40c.

LARGE BELL, or Bull Nose.—Pkt. 5c oz. 15c, $\frac{1}{2}$ lb. 50c.

RED CAYENNE.—Pkt. 5c, oz. 25c, $\frac{1}{2}$ lb. 90c.

MIXED PEPPERS.—A choice mixture of all the above and several other fancy varieties. Fine for exhibition. Pkt. 10c, oz. 35c.

PUMPKIN

YANKEE PIE.—This is the noted New England Pie or Small Sugar Pumpkin. Small, very sweet, fine grained and one of the best varieties for table use. Pkt. 5c, oz. 10c, $\frac{1}{2}$ lb. 25c, lb. 75c.

CALHOUN, or THANKSGIVING PIE.—A great improvement on the Large Cheese. Color creamy brown, flesh deep salmon yellow, fine grained; seed cavity is very small. Rind thin. Pkt. 5c, oz. 10c, $\frac{1}{2}$ lb. 25c, lb. 75c.

KING OF MAMMOTHS.—The flesh and skin are of a bright, golden yellow, fine grained and of good quality. We know of one specimen that reached the enormous weight of 245 pounds. Pkt. 5c, oz. 15c, $\frac{1}{2}$ lb. 50c, lb. \$1.50.

NEW ATLAS.—What do you think of a pumpkin weighing 300 pounds? It is not an impossibility, as that weight has been exceeded in this variety, which is an improvement on the Mammoth Chili. It is just the thing for exhibition at fairs. Flesh is a rich yellow, very thick, and excellent quality, nutritious and profitable to grow for stock feeding. Pkt. 10c, oz. 25c.

CONNECTICUT FIELD.—The common field or cow pumpkin. If you have any live stock to feed it will pay you to put in a few acres of these. Per ounce 5c. $\frac{1}{2}$ lb. 15c., lb. by mail 40c. By express or freight, 10 lbs \$2.50, bushel of 25 lbs \$5.00

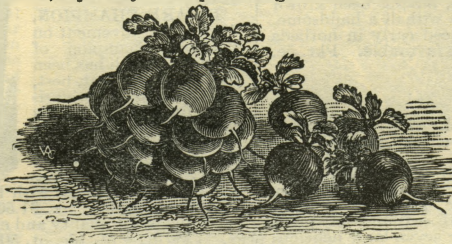
RADISHES

EARLY BIRD.—Decidedly the earliest of all radishes. Quick growth is one of the main essentials for a crisp and tender radish, and with loose soil and proper culture the Early Bird is ready for the table in twenty days from time of sowing the seed. It is of round or turnip shape as shown in our illustration, of bright scarlet color and pure white flesh, which is tender, crisp and of the very best flavor. Very desirable for the home garden and a money maker for the market gardener. Per pkt. 10c, oz. 20c, $\frac{1}{2}$ lb 50c, lb. \$1.50.

GRAY LARK.—A most unique variety of radish from Spain, makes nice shaped little roots very early in the season, and they keep growing larger and hold their quality until late in the fall. They are crisp, brittle and excellent flavor; color grayish brown. Pkt. 10c, oz. 25c, $\frac{1}{2}$ lb. 75c.

VIOLET QUEEN.—A novelty of 1908 and decidedly the handsomest of all radishes. It is a small, round or turnip-shaped variety of a beautiful violet-purple color, sometimes shading to white near the tip, thus giving it a very pleasing aspect. It matures quickly, is solid, crisp and of excellent flavor, and does not become pithy quickly. For best results grow in loose, rich soil and cultivate well. It is very showy on the table, especially when put in a glass dish with red and white radishes. Do not fail to try it. Per pkt. 10c, oz. 30c.

STRIPED TRUIMPH.—A beautiful new variety which is a decided novelty. It has a white skin, striped bright scarlet, being decidedly ornamental when placed on the table. It is very early, has small top, thus adapting it



VIOLET QUEEN RADISH

to cultivation in hotbeds. Pkt. 5c, oz. 15c, $\frac{1}{2}$ lb. 40c, lb. \$1.25.

EARLY SCARLET GLOBE.—The most popular variety for hotbeds and forcing. Of hand some color; crisp, juicy and tender. Pkt. 5c oz. 10c, $\frac{1}{2}$ lb. 25c, lb. 70c.

CRIMSON GIANT FORCING.—The most profitable variety for market gardeners. It is a rapid growing sort, of beautiful deep crimson color, perfect shape and more than double the size of any other forcing variety. Pkt. 5c, oz. 10c, $\frac{1}{2}$ lb. 30c, lb. 90c.

MODEL WHITE BOX.—Of handsome shape, very early and has but few leaves, thus making it of special value for growing in hotbeds. Of clear white color, solid, juicy and unsurpassed in flavor. Pkt. 5c, oz. 10c, $\frac{1}{2}$ lb. 25c, lb. 75c.

EARLY LONG SCARLET.—Pkt. 5c, oz. 10c, $\frac{1}{2}$ lb. 20c, lb. 50c.

IMPROVED CHARTIER.—Roots are long and cylindrical, scarlet-rose above, shading into pure waxy white at the tip. Pkt. 5c, oz. 10c, $\frac{1}{2}$ lb. 20c, lb. 50c.

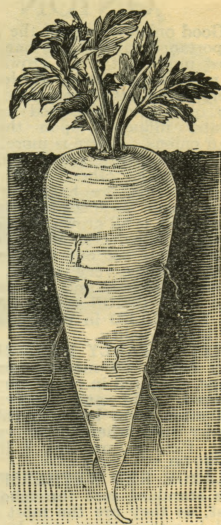
EARLY SCARLET GEM.—An extremely early variety of a perfect globe shape, and of a bright rich scarlet color, tipped with white, thus making it particularly handsome on the table. In quality it stands unsurpassed—tender, crisp and appetizing. Per pkt. 5c, oz. 15c, $\frac{1}{2}$ lb. 40c, lb. \$1.25.

WHITE STRASBURG.—Of a handsome oblong, tapering shape, both skin and flesh are pure white. The flesh is firm, brittle and tender, and retains its crispness even if old and large. Pkt. 5c, oz. 10c, $\frac{1}{2}$ lb 20c, lb. 60c.

ICICLE.—A splendid long variety of almost transparent whiteness. Pkt. 5c, oz. 10c, $\frac{1}{2}$ lb. 25c, lb. 75c.

CHINA ROSE WINTER.—Bright rose colored, winter variety. Pkt. 5c, oz. 10c, $\frac{1}{2}$ lb. 20c, lb. 60c.

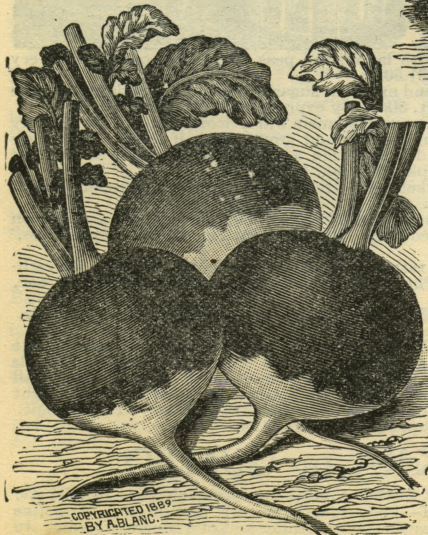
IOWA SEED CO'S RADISH MIXTURE.—A superb mixture of all kinds of radishes, early, medium, fall, winter, Chinese, etc. Sow a row of it and it will furnish you delicious radishes throughout the year. The early and medium ones as they mature and are pulled, make room for the larger growth of the fall and winter varieties. Pkt. 5c, oz. 10c $\frac{1}{2}$ lb. 25c, lb. 75c.



GUERNSEY PARSNIP



EARLY BIRD RADISH



SCARLET GEM RADISH

TOMATO

SPARK'S EARLIANA.—Is not only extremely early, but is remarkable for its large size, handsome shape, and beautiful bright red color. Its solidity and fine qualities are fully equal to many of the best late sorts. Extra early tomatoes are one of the most profitable crops for the market gardener, as well as specially desirable in the home garden. You will make no mistake in planting the Earliana. Pkt. 10c, oz. 30c, $\frac{1}{4}$ lb. \$1.00, lb. \$3.25.

JUNE PINK.—Almost identical with above except that it is of a handsome, bright pink color and therefore more desirable for some markets. Pkt. 10c, oz. 75c.

MAJESTIC.—The largest, handsomest and finest quality tomato ever sent out and one which all are well pleased with. It is undoubtedly the largest fruited of any variety ever sent out, and the fruit is so solid that it weighs more than its size would indicate. Of a rosy red color, ripening evenly all over, way up to the stem. When cut it is a rich coral red color, its core blending into delicate shell-rose tints. Fruit is unusually solid, having very small seed cells which are few in number and near the surface. The flesh is tender, fine grained and rich, yet of mild, delicate flavor, being of the sub-acid class. Many customers have reported specimens weighing 3 pounds, to 7 pounds each, the largest specimens were, of course, grown by special culture, allowing only one or two fruits to ripen on the plant. There were also many reports of 120 lbs. to 160 lbs. of tomatoes grown on one plant. Pkt. 10c, oz. 75c.

RED MAJESTIC.—This new variety which we are now offering for the first time appears to have all the good qualities as well as the large size of the world renowned Majestic, but is of a bright crimson red in color and for this reason may be preferred by some. It is also of special value for growing on a trellis and will quickly cover a support 6 or 8 feet high and bears its fruit well up from the ground out of reach of the chickens. We can only offer the seed this year in packets of 100 seeds for 40c, 3 packets for \$1.00. This may look like a high price to you, but the Majestic was first introduced at the same price and if properly grown you can pick forty cents worth of fruit from each plant, we think. Per pkt. 40c, 3 pkts. \$1.00.

BOND'S EARLY MINNESOTA.—Before the introduction of Spark's Earliana, this was considered the earliest of all. Vines vigorous and when quite small begin producing fruits which are of fair size, of good shape, smooth, dark red color. Pkt. 5c, oz. 25c, $\frac{1}{4}$ lb. 75c, lb. \$2.25.

MATCHLESS.—Well worthy of its name, for in beauty, color and symmetry of form it is indeed without a peer. Of the finest flavor, very rich cardinal red color and of large size. Pkt. 5c, oz. 25c, $\frac{1}{4}$ lb. 75c, lb. \$2.50.

LIVINGSTON'S BEAUTY.—Pkt. 5c, oz. 20c, $\frac{1}{4}$ lb. 60c, lb. \$2.00.

IOWA BEAUTY.—An improvement on Livingston's Beauty, being of larger size, more solid and uniform in quality. Pkt. 5c, oz. 25c, $\frac{1}{4}$ lb. 75c, lb. \$2.50.

DWARF CHAMPION Dwarf and compact, the stem being thick, stiff and short jointed. It is almost self-supporting when laden with fruit. It is early, of a purplish pink color. Pkt. 5c, oz. 25c, $\frac{1}{4}$ lb. 75c, lb. \$2.50.

GOLDEN NUGGET.—A very fine, new variety from England, which produces hundreds of handsome fruits about the size of a large plum and of beautiful golden yellow color and delicious flavor. Pkt. 10c, oz. 60c.

STONE.—The color is a bright red. The fruit is of large size, perfectly smooth and of the best table quality in every respect. It is a famous main crop tomato and is much used for canning. Productive, and the fruit bears shipment well. Pkt. 5c, oz. 20c, $\frac{1}{4}$ lb. 60c, lb. \$1.75.

PONDEROSA.—Very large and of fine quality. Pkt. 5c, oz. 30c, $\frac{1}{4}$ lb. \$1.00.

GOLDEN QUEEN.—Best of the large, yellow varieties. Pkt. 5c, oz. 25c, $\frac{1}{4}$ lb. 85c.

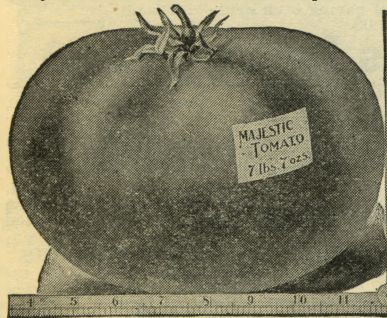
IMPROVED TROPHY.—Our Improved Trophy is vigorous and productive; its large solid, smooth, fine-flavored fruit will satisfy the most exacting. Also much liked for canning. Pkt. 5c, oz. 20c, $\frac{1}{4}$ lb. 65c, lb. \$2.00.

FAVORITE.—Bears clusters of three to seven tomatoes of a rich, dark red color, very smooth, flesh firm. A nice canning variety. Pkt. 5c, oz. 15c, $\frac{1}{4}$ lb. 50c, lb. \$1.75.

ACME.—Valuable for early market; medium size, color a glossy red with purplish tinge. Pkt. 5c, oz. 15c, $\frac{1}{4}$ lb. 50c, lb. \$1.75.



SPARKS EARLIANA



SALSIFY

MAMMOTH SANDWICH ISLAND.—Average fully double the size of the old, Long White. Roots are white, smooth and notwithstanding their enormous size, are of superior quality. Pkt. 5c, oz. 15c, $\frac{1}{4}$ lb. 50c, lb. \$1.50.

SPINACH

VICTORIA.—Distinguished by its exceedingly dark black-green color, and also for its very long standing qualities. The leaves are thick and spread out flat upon the ground. Pkt. 5c, oz. 10c, $\frac{1}{4}$ lb. 15c, lb. 35c. By express, 5 lbs. or more at 25c.

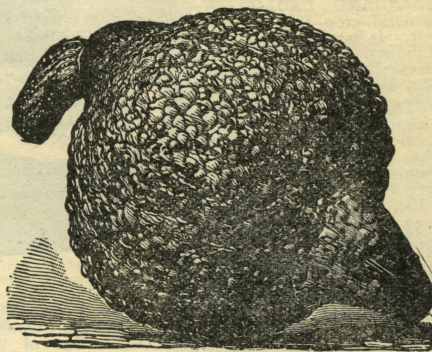
LONG STANDING.—Standard with gardeners; leaves thick, fleshy and crumpled, round, large and of a dark green color; slow to run to seed. Pkt. 5c, oz. 10c, $\frac{1}{4}$ lb. 15c, lb. 35c. By express, 5 lbs. or more at 20c.

SQUASH

GOLDEN BUSH.—The earliest of all and quite a favorite with all who like summer squash. Pkt. 5c, oz. 10c, $\frac{1}{4}$ lb. 20c, lb. 65c.

EARLY BUSH CROCKNECK.—Splendid sort, early, productive, very fine quality. Pkt. 5c, oz. 10c, $\frac{1}{4}$ lb. 20c, lb. 60c.

TRUE HUBBARD.—This old variety has for years stood the test of all rivals, and is the most popular winter squash grown; hard, green-shell; flesh bright orange yellow, fine grained, very dry, sweet and of rich flavor; keeps in perfect condition throughout the winter. Pkt. 5c, oz. 10c, $\frac{1}{4}$ lb. 25c, lb. 75c.



HUBBARD SQUASH

WARTY HUBBARD.—Harder and more warty than Hubbard and more delicate and sweet. Pkt. 5c, oz. 10c, $\frac{1}{4}$ lb. 30c, lb. 85c.

NEW HESTER.—This extra choice new variety, of the same shape as the Sibley, but the color is of a pinkish yellow, slightly striped at the point with light green. They are early and can be used as a summer squash, but is superior to the Hubbard for winter. Pkt. 5c, oz. 15c, $\frac{1}{4}$ lb. 50c, lb. \$1.50.

MAMMOTH CHILL.—The "Jumbo" of the squash family. The outer color is a rich orange yellow; skin is smooth; flesh very thick and of a yellow color. Pkt. 5c, oz. 15c, $\frac{1}{4}$ lb. 50c, lb. \$1.50.

TURNIP

EXTRA EARLY PURPLE TOP MILAN.—One of the earliest sorts in cultivation. Flat, of medium size, quite smooth, with a bright purple top. Pkt. 5c, oz. 10c, $\frac{1}{4}$ lb. 20c, lb. 60c.

EARLY SNOWBALL.—Productive. Flesh is very fine grained, firm and of delicate flavor. Pkt. 5c, oz. 10c, $\frac{1}{4}$ lb. 20c, lb. 60c.

GOLDEN BALL.—A bright yellow turnip of medium size, sweet and delicate. Pkt. 5c, oz. 10c, $\frac{1}{4}$ lb. 20c, lb. 60c.

PURPLE TOP STRIP LEAVED.—The standard for this part of the country for late planting. A good cropper and excellent keeper. Pkt. 5c, oz. 10c, $\frac{1}{4}$ lb. 20c, lb. 45c, 5 lbs. or more, not prepaid, at 30c.

PURPLE TOP GLOBE.—Similar to above, except shape. Pkt. 5c, oz. 10c, $\frac{1}{4}$ lb. 20c, 5 lbs. or more, not prepaid, 35c per lb.

WHITE EGG.—A quick growing, egg shaped, perfectly smooth, pure white variety with small top and rough leaves. The flesh is very sweet firm and mild, never having any rank, strong taste. Pkt. 5c, oz. 10c, $\frac{1}{4}$ lb. 20c, lb. 60c.

EARLY WHITE MILAN.—A flat variety which is pure white all over, instead of having purple top. Pkt. 5c, oz. 10c.



IOWA STANDARD VEGETABLES

EVERY YEAR there are hundreds of customers who request us to select for them the varieties which will prove most satisfactory for general use, as they are unable to choose from the descriptions in the catalogue, because all varieties seem to be well spoken of. It is true that we do not handle a single variety of vegetable which we cannot recommend and each variety has thousands of friends who think that it is the best but after much care in experimenting on our own place as well as examining the crops

**IOWA
STANDARD**

grown by a vast number of our customers, we have selected the following sorts which we believe will prove the most generally satisfactory for the family garden and most of the kinds are also very desirable for Market Gardeners. Every variety has our personal recommendation and some of them are kinds which we have been growing for years past but have never before offered them in our catalogue. We give each of the varieties the name "Iowa Standard" and you cannot make a mistake in ordering them for your garden.

IOWA STANDARD BEET.—A most excellent variety both for early use and for main crop. Is nearly as early as Crosby's Egyptian, but they can be allowed to remain in the ground and be pulled any time during the summer or fall. There is no better variety for winter use. Shape is nearly spherical, color dark red, fine grained and sweet. Pkt. 5c, oz. 15c, $\frac{1}{2}$ lb. 35c, lb. \$1.00.

IOWA STANDARD EARLY CABBAGE.—Everyone wants some early cabbage and you will find the Iowa Standard satisfactory. It matures early, is of good size, solid heads and excellent quality. Pkt. 10c, oz. 30c, $\frac{1}{2}$ lb. \$1.00, lb. \$3.00.

IOWA STANDARD LATE CABBAGE.—We consider this one of the largest heading, most solid and most profitable varieties of cabbage grown and we are sure truck growers will be especially well pleased with it. Pkt. 5c, oz. 25c, $\frac{1}{2}$ lb. 75c, lb. \$2.40.

IOWA STANDARD CAULIFLOWER.—For general crop this is decidedly the best. It matures early; is of nice medium size, a sure header, solid and unexcelled in quality. Pkt. 20c, $\frac{1}{2}$ oz. 85c, oz. \$2.75.

IOWA STANDARD CARROT.—The most desirable early variety for bunching, and although a trifle later than the first earlies, still will yield so much handsomer roots and larger crop that everyone is pleased with it. Pkt. 5c oz. 10c, $\frac{1}{2}$ lb. 30c, lb \$1.00.

IOWA STANDARD CELERY.—An excellent sort which is one of the most easily grown varieties and quality is unexcelled. Stalks of good size, require very little blanching and is therefore easier to grow. Pkt. 10c, oz. 25c $\frac{1}{2}$ lb. 75c, lb. \$2.25.

IOWA STANDARD EARLY SWEET CORN.—One of the earliest sorts that we know of, producing ears about six to seven inches long, of perfect form and of excellent quality—tender and sweet. Pkt. 5c, $\frac{1}{2}$ pt. 20c, qt. 60c.

IOWA STANDARD LATE SWEET CORN.—Produces large sized ears and usually has two or three ears to each stalk, sometimes more. Ears are of large size and very sweet. Begins bearing in mid-season and continues until severe frost. Pkt. 5c, $\frac{1}{2}$ pt. 15c, qt. 50c.

IOWA STANDARD CUCUMBER.—The handsomest of long green varieties. Are well formed and hold their color excellently. Pkt. 10c, oz. 20c, $\frac{1}{2}$ lb. 50c, lb \$1.50.

IOWA STANDARD LETTUCE.—One of the finest family sorts in existence. Of large size, fine color and excellent quality; does not run to seed quickly. Pkt. 5c, oz. 15c, $\frac{1}{2}$ lb. 45c, lb. \$1.25.

**WE WILL MAIL POSTAGE PAID
ONE PACKET EACH OF THESE**

VINE PEACH

A splendid novelty introduced by us. The vine on which they are borne is somewhat similar to the muskmelon vine, and requires the same cultivation. The fruit is about the size of a large peach, oval shaped, and for sweet pickles, pies or preserving they are superb. Recipes for preparing for the table will be sent with each order. Pkt. 5c, oz. 25c.

MUSHROOMS

Can be grown to perfection in any ordinary house cellar, woodshed or barn. The great luxury of mushrooms can be enjoyed by all at a trifling expenditure of money, time and labor. Our English mushroom spawn is grown by special culture from large perfect heads and then pressed into bricks weighing 1 $\frac{1}{2}$ lbs. each. Per brick 40c postpaid. By express or freight, 5 lbs. 65c, 10 lbs. \$1.00, 25 lbs. \$2.00, 100 lbs. \$6.50. Book on Mushroom Culture 10 cents.

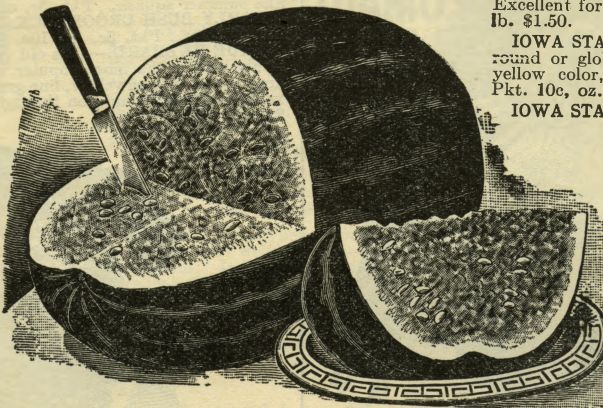
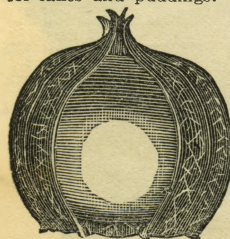
GROUND CHERRY

IMPROVED YELLOW.—Another year adds only to the popularity of this little fruit which we introduced. They grow well on almost any dry soil; are easier raised than the tomato, are prolific bearers, and oh! what luscious fruit. For sauce or pies they are excellent. They are delicious as preserves and when dried in sugar are much better than raisins for cakes and puddings. Directions for preserving are sent with each packet. Pkt. 5c, $\frac{1}{2}$ oz. 25c, oz. 40c.

OLD FASHIONED GARDEN COLLECTION

Grandma will enjoy these as well as all the rest of the family. One packet each of Aster, Bachelor's Buttons, Balsams, Candytuft, Coropsis, Double Dahlia, Double Hollyhock, Larkspur, Mrigold, Mignonette, Chinese Pink, and Wall Flower.

A total of 12 packets for only 25c



IOWA STANDARD WATERMELON

"Green Rind, Red Meat, Full of Juice and Oh! so Sweet"

and shape. Pkt. 5c, oz. 10c, $\frac{1}{2}$ lb. 30c, lb. 85c.

IOWA STANDARD EARLY RADISH.—If you are only growing one variety of radish, we are sure you will be pleased with this choice sort. It is larger in size and considerably longer than the Scarlet Globe, and of handsome bright scarlet color throughout. Pkt. 5c, oz. 15c, $\frac{1}{2}$ lb. 40c, lb. \$1.20.

IOWA STANDARD SQUASH.—This is a most excellent winter variety keeping as long as the Hubbard and being, we think, of better quality. Can also be used as a summer variety as quality is excellent early in the season. Pkt. 5c, oz. 15c, $\frac{1}{2}$ lb. 50c.

IOWA STANDARD TOMATO.—Of medium size with perfect shape and one of the most productive varieties that we have ever seen, the fruit being so perfect and even as to almost have the appearance of having been made in a mold. Pkt. 10c, oz. 30c, $\frac{1}{2}$ lb. \$1.00.



19 Best Vegetables for only \$1.00

HERBS

It will pay you to have some herbs in your garden and we can furnish any of the following at five cents per pkt. 6 pkts. for 25c.

Anise, Balm, Basil, Sweet, Borage, Caraway, Catnip, Coriander, Castor Oil Plant, Chamomile, Dandelion, Dill, Fennel Sweet, Horehound, Hyssop, Lavender, Marjoram Sweet, Opium Poppy, Rosemary, Rue, Saffron Sage, Summer Savory, Sweet Woodruff, Tansy, Thyme, Wormwood and Mixed Varieties.

RED CROSS PEANUTS

This very desirable variety is early, the most hardy, very prolific and of the best quality. Boys, here is a chance for you. Think of growing peanuts in your own garden and having plenty of them to eat. Shell the nuts carefully so as to not break the inside skin, and plant as soon as the ground becomes warm, from two to three feet apart each way, four or five to the hill, covering two inches. Per large package 10c, lb. 40c post-paid. By express 5 lbs. or more at 25c per lb.

BIG ONIONS

One packet each of Mammoth Prizetaker, Mammoth White Prizewinner, Copper King, Silver King and Giant Vesuvius.

All For 25c.



FARM SEED DEPARTMENT



WAREHOUSE 208-210-212 SOUTH EIGHTH ST.
WHERE ORDERS FOR FARM SEEDS ARE FILLED

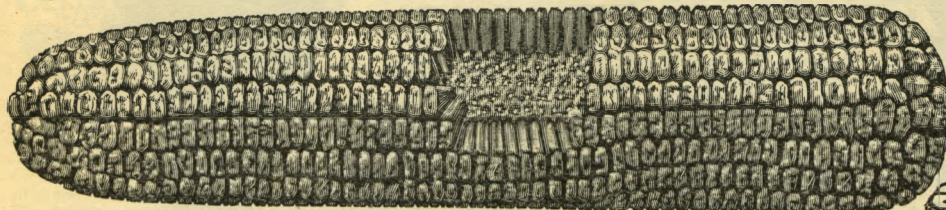
Realizing the vast importance of this branch of our business, we devote our careful attention to the growth and selection of the best farm seeds of all sorts. Our seed grain is grown especially for seed in the section best suited to its development and perfect maturity, is all carefully selected, thoroughly cleaned, of the best quality and we sell at reasonable prices.

WE TAKE PRIDE in our large and increasing trade in this branch of the business. With our new and convenient buildings and improved machinery for cleaning, which is as perfect as any in the United States, we are enabled to clean seeds perfectly; far better than those commonly sold.

HIGH GRADE SEED GRAIN.—It costs more to grow a crop for seed purposes than the ordinary farmer can understand. It requires extra choice stock seed, special preparation of the land, special cultivation, great care in harvesting, cleaning, grading, bagging, preparing for shipment, bags, etc., etc., so that we are obliged to ask a considerable advance for market prices, but any intelligent farmer who appreciates the value of good seeds will agree with us that such pedigreed seed is well worth to him the price we ask.—**IT PAYS TO GROW THE BEST.**

PRICES named in this department are subject to important market changes. Quotations are net and are not subject to premium or discount which is offered on other seeds. Clover and grass seeds are constantly varying in value, and we issue a price list daily during the busy season. Please write for quotations, sending list of requirements, when in need. Orders sent us will be given benefit of lowest prices on day order is received. Will take pleasure in mailing samples and quoting inside prices at any time on large orders.

SHIPPING.—In this department everything that is quoted by the packet or pound is sent by mail postpaid; all larger quantities unless noted, are sent by express or freight at the expense of



REID'S YELLOW DENT

the purchaser. Prices named include bags and delivering to depot here.

NOTICE.—While we exercise great care to have all seeds pure and reliable we give no warranty, express or implied. However, if the seeds are not satisfactory on receipt and examination, they are to be returned to us at once and we will refund the money.

SEED CORN

THIS is our great specialty. We claim to be headquarters for seed corn in the United States, and can furnish the choicest seed from the best thoroughbred varieties of corn. Send list of your wants and let us quote prices.

PROSPERITY.—Novelty of 1908, and we believe will prove the most profitable variety for general use. In all the points of a good corn Prosperity is as near perfection as has yet been attained. The ear is as large as is consistent with perfect maturity, well filled at both ends, with small cob, bright, vigorous appearance, and, in fact, always looks prosperous. It is a thoroughbred corn, producing a uniform type of ears, about ten inches in length, a little more slender than Silver Mine, well filled at both ends. The kernels are uniform in depth and shape with plump tip filling the ear well at the cob; large, bright germ showing strong vitality and high feeding value. The grains are a bright golden yellow in straight, even rows on a dark red cob. Price per pk. 90c, bu. \$3.00, 2 bu. or more at \$2.75.

GOLDEN WEST.—One of the most vigorous growing varieties that we know of. Stalk is of medium height and very thick at the ground, short jointed with broad leaves which help mature the large crop of corn it produces. It matures in about one hundred days, thus making it a safe corn to plant, and we claim that it will yield a larger crop than any other yellow corn in existence. It is not a poor land corn,

however, as it requires good soil and cultivation. Vast treasures of Iowa soil, rain and sunshine are being annually wasted by trifling with varieties of corn not capable of utilizing them. Don't plant the old worn out sorts any longer, begin right this year by buying Golden West. Per pkt. 5c, lb. 25c, 3 lbs. 60c, postpaid. By freight, pk. 65c, bu. \$2.00, 2 bu. or more at \$1.85, 10 bu. or more at \$1.70.

IOWA SILVER MINE.—The most marvelous variety of corn ever offered, and one which will surprise everyone who plants it. Thousands of farmers have tried it and doubled their crops and also made money rapidly by selling seeds to their less enterprising neighbors. It is revolutionizing the corn growing industry of the country. It yielded 215 bushels per acre in 1896, thereby capturing the big prize that year. Don't fail to try it this year as one bushel per acre added to your crop

will more than pay cost of seed. Per pkt. 5c, lb. 25c, 3 lbs. 60c, 7 lbs. (will plant an acre), \$1.00, postpaid. By freight, per pk. 65c, bu. \$2.00, 2 bu. or more, at \$1.85, 10 bu. or more at \$1.70.

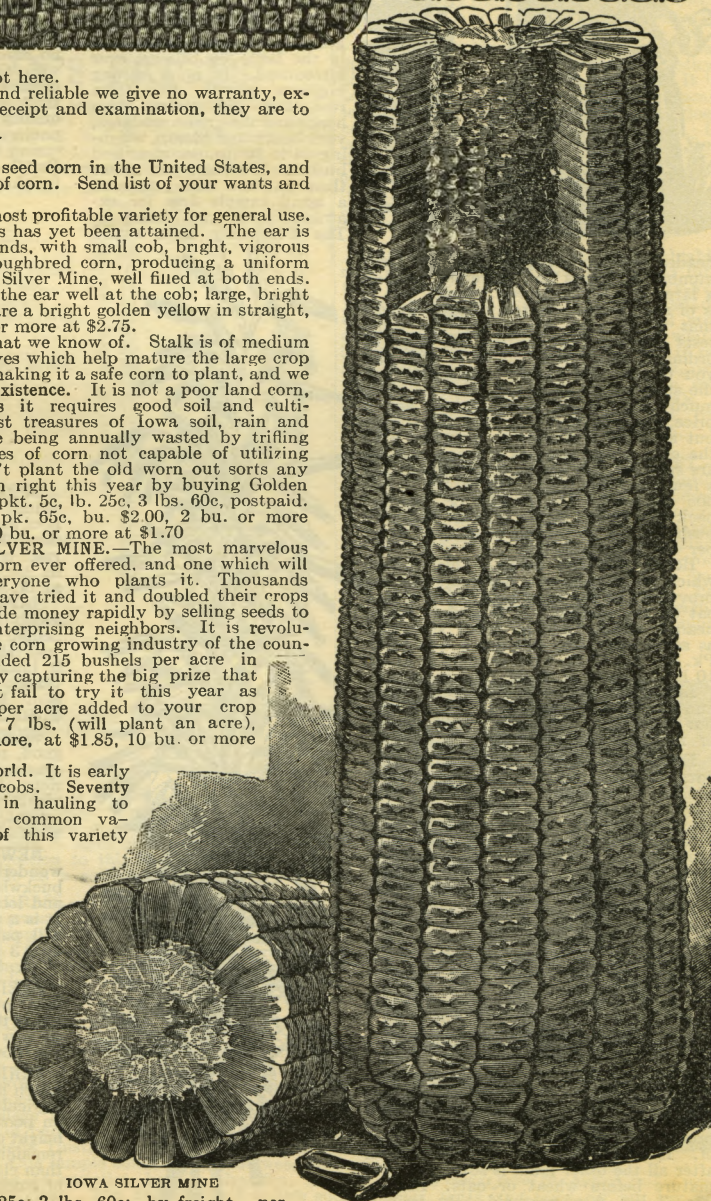
IOWA GOLD MINE.—The deepest grained yellow corn in the world. It is early has good sized ears, bright golden yellow and very small cobs. Seventy pounds of ear corn makes 62 to 63 pounds of shelled corn, and in hauling to market it weighs out five bushels more to the wagon load than common varieties in the same size wagon. We have shelled selected ears of this variety which produced 64 pounds of shelled corn and only 5 pounds of cobs to the bushel. This is an unparalleled record. It cannot be equalled by any other corn in the world. Pkt. 5c, lb. 25c, 3 lbs. 60c, postpaid; by freight, pk. 65c, bushel \$2.00, 2 bushels or more at \$1.85, 10 bushels for \$17.00.

LENOCHER'S HOMESTEAD.—For those who desire a first-class variety of red corn this is the one we would recommend above all others. It is one of the best varieties for feeding purposes. It is well known in Iowa for having won the Iowa Homestead prize of \$100, yielding 345 bushels on three acres with ordinary culture. Pkt. 5c, lb. 25c, three lbs. 60c, by freight, pk. 55c, bu. \$1.75, two bu. or more at \$1.65, ten bus. for \$15.

REID'S YELLOW DENT.—During the past five or six years this variety has come rapidly to the front and now occupies a prominent position in all lists. It is of handsome shape and color and largely grown for exhibiting at fairs, corn shows and is used in many corn schools as a standard for judging. It is the most highly recommended by Prof. Holden, the noted corn expert of the Iowa Agricultural College. Matures in about 115 days. Pkt. 5c, lb. 25c, 3 lbs. 60c postpaid. By freight, per pk. 55c, bu. \$1.75, 2 bu. or more at \$1.65, 10 bu. or more at \$1.50.

LEGAL TENDER.—This is now one of the most prominent late varieties of yellow dent corn in the country. Pkt. 5c, lb. 25c; 3 lbs. 60c; by freight, per pk. 55c, bu. \$1.75, 2 bu. or more at \$1.65, 10 bu. or more at \$1.50.

It costs less than 30 cents
an acre to use our carefully
selected **SEED CORN.**
Do you think it wise to
risk doubtful corn when
GOOD SEED is so cheap?



IOWA SILVER MINE

EARLY JAVA WHEAT.—For five or six years past this has given far better satisfaction in central Iowa than any other variety and wherever introduced it is driving all other sorts out. The farmers are delighted with it. It is a new variety of spring wheat, about ten days earlier than Velvet Chaff or other standard sorts, and thus escapes the extreme hot weather so injurious to small grain. It is usually ready for harvest as early as winter wheat, and therefore desirable to sow on land where winter wheat has partially failed. Per lb. 25c, 3 lbs. 60c, postpaid; by freight, pk. 65c, bu. \$1.75, 2 bu. or at more \$1.65, 10 bu. for \$15.00.



HAYNES PEDIGREE WHEAT.—Heads are very large, well filled out, the kernel is hard, the plant stools greatly, and under ordinarily favorable conditions will yield 40 to 50 bushels per acre. It is an improvement on Velvet Chaff or Blue Stem Wheat. Lb. 25c, 3 lbs. 60c, postpaid; by freight, pk. 65c, bu. \$1.75; 2 bu. or more at \$1.65; 10 bu. for \$15.00.

MACARONI WHEAT.—This wheat has proved to be a great money maker to the farmers of the Northwest. It does especially well in the semi-arid plains. It seems to be always a sure crop and will mature in a shorter season than any other wheat. Per lb. 30c, 3 lbs. 75c, postpaid; by freight 3pk 40c, pk. 65c, bu. \$1.65; 2 bu. or more at \$1.50, 10 bu. for \$14.00.

PROSPERITY OATS.—This grand new variety is decidedly the best, we believe, ever introduced. It is of strong vigorous growth, free from rust, has stiff straw, large heads and the grains are large, very heavy and plump, weighing 48 to 50 lbs. per measured bushel. We want you to see them and are willing to send a small sample free for examination if you desire it. The Prosperity is a round

headed sort producing an unusually large number of grains and therefore yielding a large crop in measured bushels, but it is of such unprecedentedly heavy weight that it surprises every one. In some tests yielding fully double the crops of ordinary oats. We believe it will pay you to sow this variety exclusively but the supply is so short and has cost us so much that we are compelled to ask a price which at first you may think high but send for a sample to compare with the oats which you are growing and we are sure you will decide to put in at least a few acres this year. Per lb. 25c, 3 lbs. 60c postpaid. By freight or express, peck 65c, bushel \$2.00, 5 bush. \$9.50, 10 bush. \$17.50, 25 bushels or more at \$1.65 per bu. bags included.

IRISH VICTOR OATS.—This variety which we introduced a few years ago has proved to be the most productive of any oat on the market. It is a close round headed variety not as much sprangled as some sorts, but still not a side head. Pk. 40c, bu. \$1.25, 2 bu. or more at \$1.10, 10 bu. or more at \$1.00, bags included.

LINCOLN OATS.—One of the very best and most popular varieties. Per pk. 40c, bu. \$1.15, 2 bu. or more at \$1.00, 10 bu. or more at 90c.

EARLY CHAMPION OATS.—Has comparatively short straw, matures a week or ten days earlier than other kinds, largely escaping the liability to rust. Its greatest value lies in its adaptability as a nurse crop to sow with grass seed, as it does not stool as freely as some other sorts. Will not lodge on rich land. Pk. 35c, bu. \$1.15, 2 bu. or more at \$1.00, 10 bu. or more at 90c.

SILVER MINE OATS.—A popular variety in some sections; has the reputation of yielding immense crops of 100 to 120 bu. per acre. It stands up well and has shown little tendency to rust or lodge unless soil was very rich. Pk. 35c, bu. \$1.15, 2 bu. or more at \$1.00, 10 bu. or more at 90c.

IDEAL WHITE HULLESS BARLEY.—Is an ideal that pleases all who try it. It weighs 60 to 65 lbs. to the measured bushel, while ordinary barley weighs only 48 pounds. The straw is very stiff and strong. It is the handsomest, most productive and best variety that we know of. Is a vigorous grower and can be sown after all the other grain is sown, and will mature before wheat or oats. Per lb. 25c, 3 lbs. 60c, postpaid. By freight, pk. 65c, bu. (48 lbs.) \$2.00; 2 bu. or more at \$1.80, 10 bu. for \$17.00.



EARLY CHAMPION

SUCCESS BEARDLESS BARLEY.—Earliest barley known. The straw is about the height of common barley, but better, and will stand up on any land. This is beardless and as easy to grow and handle as oats. Is a heavy cropper yielding from fifty to seventy-five bushels per acre, and the quality is excellent, both for malting and feeding hogs. Per lb. 25c, 3 lbs. 60c. By freight, pk. 60c, bu. \$1.60; 2 bu. or more at \$1.50, 10 bu. for \$14.00.



IDEAL HULLESS BARLEY

SPELTZ.—A Valuable New Grain From Russia.—This most wonderful new grain was first introduced in this country by the Iowa Seed Co., and has proved of great value, and is now listed by almost all of the leading seedsmen. It is botanically known as Triticum Spelta or Emmer, and is supposed to be the grain grown in Egypt in the time of Moses. It is mentioned several times in the Bible. For centuries past it has been grown in a limited way in Eastern Russia, near the Caspian Sea, its value not being known to the civilized world. Is of high value for feeding and will make a fair grade of flour, similar to rye. Will grow well and produce immense crops on poor soil, and dry weather appears to have no effect on it; will make a good crop with almost any condition of soil or climate. The grain is much richer than corn for feeding and of superior quality for fattening hogs, cattle, sheep, poultry, etc. May be sown in the spring or fall, 50 to 75 lbs. per acre. Per lb. 25c, 3 lbs. 60c, postpaid. By freight pk. 50c, bu. (35 lbs.) \$1.25, 2 bu. or more, at \$1.10.



GRAINS OF SPELTZ

SPRING RYE.—This is quite different from the winter rye and is highly valued wherever known. It is not only more productive but the grain is of finer quality and it can be successfully grown in any latitude. Produces 30 to 40 bushels of grain to the acre. As it does not stool like winter rye, not less than two bushels to the acre should be sown. Pkt. 5c, lb. 25c, 3 lbs. 60c, postpaid. By freight, pk. 60c, bu. \$1.50, 2 bu. or more at \$1.40.

JAPANESE BUCKWHEAT.—A week earlier than Silver Hull and yields more. Flour is equal to any other buckwheat, while it is more productive than any other, and succeeds well far north. The straw is heavier and its branches more; need not be sown as thickly as other kinds. Lb. 25c, 3 lbs. 60c. By freight, pk. 50c, bu. (52 lbs.) \$1.50, 2 bu. at \$1.35, 10 bu. for \$12.50.

SILVER HULL BUCKWHEAT.—Very good, popular variety. Grain is of light gray color, rounder than the common variety, has a thinner husk, earlier and yields more. Lb. 25c, 3 lbs. 60c. By freight, pk. 50c, bu. \$1.50, 2 bu. or more at \$1.35; 10 bu. for \$12.50.

NEW HULLESS BUCKWHEAT.—A wonderful novelty, growing exactly like buckwheat, but the grain has no hull on and looks exactly like the grains of rye. It is a desirable novelty which we believe will pay farmers to try. Pkt. 10c, lb. 40c, 3 lbs. \$1.00, postpaid. By freight, 1/2 pk. 65c, pk. \$1.15, bu. \$3.50.

SEED FLAX.—It will pay you to sow nice, pure, high-grade flax seed. It is one of the most profitable crops, especially on new land. Price subject to changes. Pk. 65c, bu. \$2.00.

SAND VETCH, or Winter Vetch.—A comparatively new forage plant which has proved of high value, and is highly recommended by the U. S. Agricultural Department. Though it succeeds and produces good crops on poor, sandy soils, it is more vigorous on good land and grows to a height of 4 to 5 feet. It is perfectly hardy throughout the United States, remaining green all winter. It is exceedingly nutritious, much more so than clover, is eaten with relish, and may be fed with safety to all kinds of stock. It is the earliest for cutting and a full crop may be taken off the land in time for planting the spring crops. Sow 1/2 bushel per acre in spring or fall. Pkt. 5c, lb. 30c, 3 lbs. 75c postpaid. By freight, pk. \$1.60, bu. (60 lbs.) \$5.75, 2 bu. or more at \$5.50.





CLOVER AND GRASS SEEDS



For about forty years we have made a specialty of supplying western farmers with the choicest grades of new crop, re-cleaned, tested seed and we now have not only the largest seed business but also the best electric seed cleaning machinery of any firm in this part of the country. Our seeds are therefore cleaner and better than most other dealers can make them, and we are enabled to sell the same quality on a closer margin of profit. We employ seed experts who examine the seed, thoroughly clean it, test its vitality and inspect under the microscope for weed seeds or other impurities, so that you get the benefit of their most careful labor. It pays to have the best, and our "Iowa Shield" brand (formerly called Anchor brand) of Clover, Timothy and other seeds is a specially fancy, pure grade which will please the most particular. The next lower grade which we call "Iowa Standard" or choice, comes fully up to the requirements of the very strict new Iowa Pure Seed Law. The fair quality we do not recommend. It will pay you to purchase the best, as it is really the cheapest, quality considered.

Medium Red Clover is the most important of all clovers and the standard everywhere for hay and pasture. It is known as Common Red or June Clover in many sections. Our Iowa grown clover seed has become widely known for its purity strong vitality, hardiness, vigorous and healthy growth and stooling qualities. It is a biennial, the plant living two years, but usually it re-seeds itself and in that way keeps up a succession. The seed is produced from second crop of hay.

Mammoth Red Clover is also one of our best Iowa varieties. It looks exactly like the Medium Red except that it grows very much taller. Produces only one hay crop per year which is so coarse as to be considered

of much less value than the Medium Red and it is therefore grown almost exclusively for hog pasture and "soiling" or plowing under to enrich the soil. It is a perennial and therefore makes a permanent pasture. It is the clover for poor soils.

Alsike Clover is unequalled for hay and we can not too strongly recommend it to our customers. It is hardy, even in Northern Minnesota, and is the only variety which will produce a good crop and not kill out in low, wet land. The hay is finer and better than any other, therefore of special value for sowing with timothy. Height 18 to 24 inches and has round, pink or flesh colored heads. Seed is small and requires only eight pounds per acre, or half that quantity if sown with timothy. We particularly recommend sowing it this year owing to the high price of the Red Clover.

Alfalfa Clover.—During the past ten years there has been a constantly increasing demand for Alfalfa Clover and it is producing immense crops on land which a few years ago was thought unsuitable for it. Under proper management it will yield ten to twelve tons of hay per acre, producing three crops per year, and all classes of stock are fond of it. It starts slow and spindling but when well rooted it grows rapidly and vigorously doing well even on the thinnest, poorest soils and withstands the greatest drought. The roots are so long that the frost does not heave or destroy it. It is permanent, one sowing will last twenty years or more and there are few if any crops more profitable. Our seed is extra nice, American grown

TODAY'S PRICES

Clover and Grass Seeds are sold on a very close margin of profit and the price fluctuates with the market just as grain and live-stock do. We request you to send for prices when ready to buy. The following are prices we are selling at on day this catalogue goes to press

February 27, 1908.

CLOVER SEED.	Per peck	Per bush.	5 bus. or more at
Medium Red—Fair....	\$2 75	\$10 40	\$10 25
" Choice.....	3 25	12 75	12 60
" Iowa Shield brand..	3 75	14 25	14 10
Mammoth Red—Fair....	2 75	10 50	10 35
" Choice.....	3 25	12 75	12 60
" Iowa Shield brand..	3 75	14 25	14 10
Alsike—Fair.....	2 70	9 75	9 60
" Choice.....	3 25	12 25	12 10
" Iowa Shield brand..	3 50	13 50	13 35
Alfalfa—Fair.....	2 75	10 00	9 85
" Choice.....	3 00	11 50	11 35
" Iowa Shield brand..	3 25	12 25	12 10
Turkestan Alfalfa—Choice.	3 25	12 50	12 35
White—Choice.....	3 00	10 75	10 60
" Iowa Shield brand..	3 50	13 00	12 85
Crimson—Choice.....	1 75	6 50	6 35
" Iowa Shield brand..	2 00	7 50	7 35
TIMOTHY—Fair.....	65	2 20	2 10
" Choice.....	75	2 60	2 50
" Iowa Shield brand..	90	2 90	2 80
GERMAN MILLET—Fair....	40	1 25	1 15
" Choice.....	50	1 50	1 40
" Iowa Shield brand..	60	2 00	1 85
KY. BLUE GRASS—F'y Cl'd..		3 00	2 80
" Iowa Shield brand..		3 50	3 25
RED TOP—Fancy Cleaned...		2 00	1 80
BROMUS INERMIS.....		2 50	2 25
ORCHARD GRASS.....		2 65	2 50
PERENNIAL RYE GRASS ...		1 75	1 60
MEADOW FESCUE.....		2 10	1 95

BAGS FREE.—In comparing prices remember that we make no extra charge for bags to hold seeds ordered from this list.

CRIMSON CLOVER.—This is an annual variety. The yield in fodder is immense, and after cutting, it at once commences to grow and continues until severe freezing weather and makes good hay. Sow in April or May, 20 pounds of seed per acre. The only objection to this is that it winter-kills in this latitude. Desirable as a soiling crop.

KENTUCKY BLUE GRASS.—Very valuable and popular as a permanent pasture grass. It is productive and unusually early in spring, furnishing delicious food for all kinds of stock. Unexcelled for lawns. Our seed is all new crop, Kentucky grown and "fancy cleaned." Sow 14 lbs. per acre for pasture, or 60 to 100 lbs. for lawns. Per lb. 40c, 3 lbs. \$1.10, postpaid. By freight, bu. (14 lbs.) \$3.00, 5 bu. or more at \$2.80.

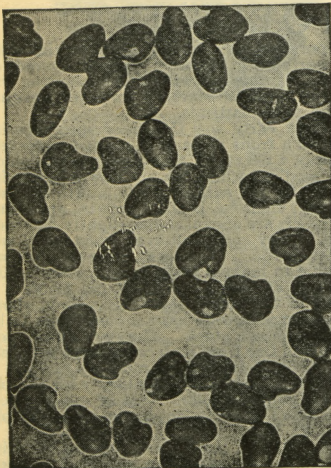
WHAT THE MICROSCOPE REVEALS

Few farmers realize the large per cent of impurities contained in the ordinary grades of clover and grass seeds. In 1906, the Iowa clover crop was a failure and large quantities of seed were shipped in from the east. The State Botanist at the Iowa Agricultural College analyzed 130 samples and almost every sample was full of bad weed seeds. Twenty-one of the samples contained Canada Thistle, 98 contained Buckhorn and 10 contained Dodder. One sample contained 10,304 weed seeds to the pound, including 14 varieties, besides the dirt, sand, trash and dead clover seed. You cannot afford to sow such seed on your land. You cannot afford to buy the imported nor eastern seed as it would cost you too much to exterminate their bad weeds.

TIMOTHY.—No variety of our natural grasses is more cultivated than timothy, and for meadows it is very valuable. It is best suited to moist, rich, strong and loamy soils, where it grows to perfection, but does not succeed as will on dry, sandy soil. It is very nutritious, and makes good hay, but should be cut at the time of flowering. We are located in the best section of the country for growing timothy seed, and more of it is grown in Iowa than in any part of the world. Ask for samples and prices.

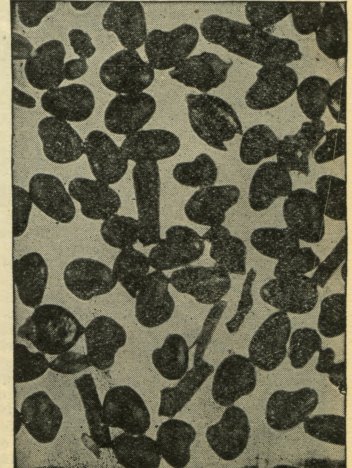
BROMUS INERMIS.—The most valuable new grass which has been introduced into this country during the past twenty-five years, and is used everywhere, from Canada to Texas, giving satisfaction. It will produce a wonderful crop of hay on land which is too poor for clover or timothy, and it resists intense cold, and also the most hot, dry weather. Forms a quick and dense sod and is a permanent grass. Per lb. 30c, 3 lbs. 75c, postpaid. By freight, per bu. (14 lbs.) \$2.50, 5 bu. or more at \$2.25.

IOWA SHIELD GERMAN MILLET.—This is an extra fancy grade of the true southern grown German Millet of the Tennessee or cultivated strain. The seeds are round and "shotty." The heads are very large, borne on a strong, vigorous, very leafy plant and produces a much heavier crop than the ordinary stock. Try it and you will be surprised at the big yield. Per lb. 25c, 3 lbs. 60c, postpaid. By freight, pk. 50c, bu. (50 lbs.) \$1.75, 5 bu. or more at \$1.65.



SHIELD BRAND CLOVER

Notice the plump, perfect shaped grains and freedom from weeds. You cannot secure better seed no matter what you pay for it and it costs but little more. It pays to sow the best.



ORDINARY CLOVER

As it comes from the huller, full of weed seeds, trash and sand. If you buy low grade seed, you not only risk filling your land with weeds, but you are also paying for each pound of weed seed and trash.



SUGAR CANE.—The most valuable fodder plant in existence for dairy farmers. It is of the very best quality, being sweet, tender, nutritious and greedily eaten by cattle, horses and hogs. Dairy men find that the cows will give more and richer milk from its use and it is claimed that as high as ten tons of fodder have been grown per acre. It can be grown successfully in any part of the country from Canada to Texas, and from the Atlantic to the Pacific. It is one of the best plants to withstand drouth and unfavorable weather and is therefore a comparatively sure crop, and a larger crop is often produced from one acre than from three to five acres in hay. It is usually put in during the first half of June, sowing 100 lbs. per acre broadcast, or 60 to 75 lbs. per acre if sown with a wheat drill. Many varieties of cane are used but we consider either the Black Seeded or Red Seeded Amber the most desirable. If wanted for sorghum purposes we recommend sowing the Kenney's, which is purer, but this cheaper grade is about as desirable for fodder purposes. Price is subject to market changes but it usually advances later in the season. Per lb. 20c, 3 lbs. 50c. By freight, 10 lbs. 50c, 25 lbs. \$1.00, 100 lbs. \$2.75; 500 lbs. or more at \$2.60.

KENNEY'S IMPROVED AMBER CANE.—An improved variety which will make the very finest grade of beautiful amber syrup of delicious flavor. It requires only 5 lbs. of seed per acre. Per lb. 25c, 3 lbs. 65c. By freight, 10 lbs. \$1.00, 25 lbs. \$2.00, 50 lbs. \$3.50, 100 lbs. \$6.00.

KAFFIR CORN.—This is a most excellent fodder plant, yielding two crops of fodder during a season. It grows from five to six feet high, making a straight, upright growth. The stem or stalk bears numerous wide leaves. The stalks keep green and are brittle and juicy making excellent fodder either green or dried. The seed crop is also heavy, sometimes yielding sixty bushels to the acre. Pkt. 5c, lb. 20c, 3 lbs. 50c. By freight, pk. 40c, bu. (56 lbs.), \$1.35, 2 bu. or more at \$1.25.

TEOSINTE.—A fodder plant grown largely in some parts of the country. Somewhat resembles corn in its general appearance, but the leaves are much longer and broader and the stalks contain sweeter sap. Eighty-five stalks have been grown from one seed, attaining a height of 11 feet. Horses and cattle eat it as freely as young sugar corn. Large pkt. 5c, oz. 10c, $\frac{1}{4}$ lb. 25c, lb. 80c, 3 lbs. (sufficient for one acre) \$2.00, by mail prepaid.

PENCILARIA.—This wonderful fodder plant has proved a great boon to farmers, especially in dry sections of the country where they have been delighted with it. It does not do so well during wet seasons being particularly a dry, hot weather plant. The seed is very small, and when it first comes up it looks like grass, but very soon changes its appearance so that it more nearly resembles corn, growing very rapidly and having broad, succulent



KAFFIR CORN

leaves. Sow in May or June in drills 24 to 36 inches apart, using 2 lbs. seed per acre, or broadcast 15 lbs. per acre. Per pkt. 5c, $\frac{1}{4}$ lb. 15c, lb. 35c, 3 lbs. \$1.00 postpaid. By express, per lb. 25c, 5 lbs. \$1.00, 25 lbs. \$3.75, 100 lbs. \$13.50.

MANGELS and SUGAR BEETS.—One of the most profitable crops for feeding cattle, horses, hogs etc. Produces 1,000 bushels per acre and upwards. Easily grown and handled.

Dignity Long Red.—An improvement on the Mammoth Long Red by careful selection for a number of years. It stands head and shoulders above all other varieties of mangels; unexcelled for yielding and feeding qualities. Grows to a very large size, weighing from 20 to 50 lbs., and will yield 50 tons per acre with ordinary good cultivation. Per oz. 5c, $\frac{1}{4}$ lb. 15c, lb. 35c. By express 5 lbs. or more at 25c.

Giant Half Sugar Mangel.—This is a hybrid or cross between the Mammoth Long Red Mangel and Sugar Beet and for our own feeding we have found it superior to either. Being sweeter, both cattle and hogs relish them greatly. Per oz. 5c, $\frac{1}{4}$ lb. 15c, lb. 40c. By express, 5 lbs. or more at 25c.

Mammoth Golden Giant.—Remarkably even in shape, and a very smooth skin; flesh white, firm and sweet; much liked by cattle. Per oz. 5c, $\frac{1}{4}$ lb. 15c, lb. 40c. By express not prepaid, 5 lbs. for \$1.25.

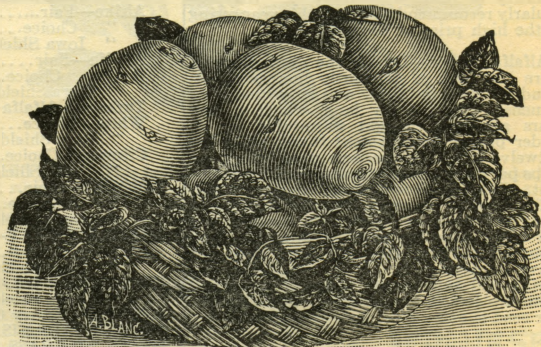
Champion Yellow Globe.—Finest type of yellow globe. Per oz. 5c, $\frac{1}{4}$ lb. 15c, lb. 40c. By express, 5 lbs. or more, at 30c



IMPROVED DWARF ESSEX RAPE.

This is beyond all question the most popular and profitable of all forage plants, and everywhere it is giving the best satisfaction. It is easily grown anywhere and stands unsurpassed as a forage plant for hogs, cattle or sheep. They eat it greedily and seem to prefer it to any other pasture during the summer and till late in the fall or early winter. It can be sown early in the season to provide early pasture for sheep and swine or sow in small grain a week or so before cutting to provide pasture after harvest, or sow on the stubble, but it is usually sown in June, July or Aug., with corn or potatoes or on well prepared land alone for summer and fall pasture. Makes a wonderfully productive pasture for sheep, hogs and cattle, and they gain flesh so rapidly that they soon "weigh like lead." In the east it is usually sown in drills, two or three pounds per acre, and cultivated, but in western states it is almost invariably sown broadcast, four or five pounds per acre, and grows so rapidly that weeds are quickly smothered.

Don't fail to try at least an acre of it. We cannot furnish the cheap Dutch grown seed. Sow 5 pounds per acre. Per pkt. 5c, lb. 30c, 3 lbs. 75c, postpaid. By freight, 5 lbs. 60c, 10 lbs. \$1.00, 25 lbs. \$2.00, 100 lbs. \$7.50.



SEED POTATOES.

With no other seed is the importance of change more essential than with potatoes, and by using our northern grown seed you are assured of early maturity, increased yield and vigorous growth. The following varieties are, we think, the best and most satisfactory sorts for growing in Iowa and other states of the same latitude.

EARLY PROSPERITY.—An extra early sort that is of such superior merit that it is sure to at once take a front place with market gardeners as well as with everyone who wants a potato of first-class quality which will mature very early. It is a seedling which we are now offering for the first time and in it we have by far the earliest white potato that we have ever seen. It is of very strong, vigorous, healthy growth, appearing to be entirely blight proof. The tubers are of oval shape, slightly flattened smooth, white skin and few eyes. They cook well even when small and are white, floury and of excellent flavor. We regret however that our stock is so small that we are unable to make a lower price. Per lb. 50c, 3 lbs. \$1.25 postpaid. By freight or express $\frac{1}{4}$ pk. \$1.25, pk. \$2.00.

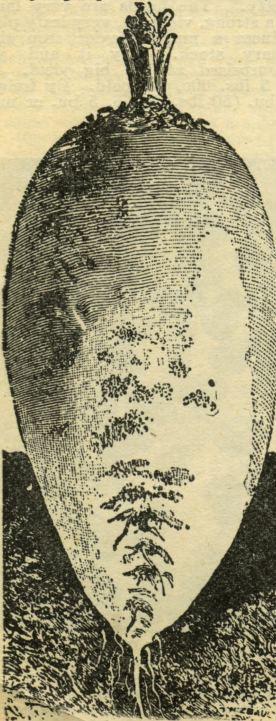
EXTRA EARLY OHIO.—Grown in the noted Red River valley; about 400 miles north of Des Moines, and careful tests have proved them to be fully ten days earlier than the Iowa grown stock. They are all of good average size, strictly pure, smooth and free from scab or rot, and out-yield other early sorts. Pk. 65c, bu. \$2.00, 5 bushels or more at \$1.75.

EARLY WHITE OHIO.—A genuine Early Ohio identical with the old variety in every way except in the improved color. It is of quick, vigorous growth, making many tubers which are compact in the hill. Per pk. 65c, bu. \$2.00, 5 bu. or more at \$1.75.

RURAL NEW YORKER NO. 2.—One of the largest yielding varieties in existence. Large and unusually smooth, with few and shallow eyes, skin white as is also the flesh, which is of superior quality. Medium late and the best drouth resister. Pk. 50c, bu. \$1.50, 5 bu. or more at \$1.25.

BLISS TRIUMPH.—Most desirable variety for the south and is there considered the earliest potato in existence. Per pk. 60c, bu. \$1.75, 5 bu. or more at \$1.50.

EARLY OHIO.—Grown in Iowa. Pk. 50c, bu. \$1.50, 5 bus. or more at \$1.25.



GIANT SUGAR MANGEL

FLOWER SEEDS

Our floral beauties come in for their full share of attention, and aside from our seed farm we have twelve acres of land right in the city, convenient to the street cars, devoted exclusively to flowers. Here we grow thousands of varieties and have in our employ experienced specialists in this line, who, under our supervision, attend to growing whatever can be grown to advantage in this country, test all novelties offered in this country or Europe, and are constantly trying, by selection and hybridization, to improve the leading varieties, and make our choice Iowa Flower seeds just what we are striving for—the best in the world. We invite all our customers to call and see this Floral Exhibition whenever they are in the city. Even during the winter the large green-houses on these grounds are a revelation of beauty which surprises everyone. We also have a large acreage on our seed farms east of this city devoted to floriculture. Our flower seeds are all fresh and we know they are unsurpassed. Quality is always the first consideration. Our mixtures are mainly made up by ourselves from named varieties, or from growing a large number of the best named varieties together, and will yield a better assortment than is commonly found.

DISCOUNTS.—In spite of our very low prices by the packet, we still offer flower seeds, in packets only, to the amount of \$1.25 for \$1.00. This discount does not apply to collections of seeds, nor to seeds by weight or measure. All flower seeds are sent free by mail on receipt of price.

ABRONIA.—Umbellata.—Trailing, habit similar to verbenas, bearing clusters of sweet-scented flowers. Rose color. Pkt. 3c.

AGERATUM.—Mexicanum.—Desirable for bouquets; produces many blue flowers and blooms a long time; largely used by florists; start seeds early. Pkt. 4c.

Albiflorum.—Like above, only white. Pkt. 8c.

AGROSTEMMA.—Mixed Colors.—Fine for bouquets or cemetery. Pkt. 5c.

ALYSSUM.—Sweet.—Pretty little white flowers, useful for bouquets and borders. Pkt. 3c.

Little Gem.—Very dwarf and compact, making a mass of white flowers. Pkt. 5c.



All Varieties Mixed.—Mixture of older sorts. Pkt. 4c, oz. 25c.

BALLOON VINE.—A pretty, rapid growing climber, succeeding best in a warm situation. Flowers white. Pkt. 5c.

DIANTHUS.—The Dianthus, or Chinese Pink, has long been a great garden favorite. It is, in fact, one of our most useful plants, furnishing an abundance of gay, pretty flowers. Plants from seed grow and bloom very quickly.

Fireball.—A beautiful, very dwarf and compact growing pink, only 10 to 15 inches high. Flowers are perfectly double and color a rich, velvety blood red. Pkt. 10c.

Snowball.—A fit companion to the above. Flowers large, pure white, double, finely fringed and of perfect form. Pkt. 8c.

Double Diadem Pink.—Superb double flower. Hieroglyphically marked, like the original Chinese pinks, in the middle down to base of each petal; magnificent in color and variety. Pkt. 7c.

Chinensis.—(Double Chinese Pink.)—Finest double mixed. Pkt. 3c.

Mixed Varieties and colors.—Pkt. 5c.

MORNING GLORIES.—Imperial Japanese.—Remarkable for the large size and exquisite new colors of the flowers, sometimes measuring four or five inches across. The colors of the flowers, shading and markings are really wonders of nature, and of incomparable beauty. Double and single mixed. Pkt. 8c, oz. 25c.

Improved Climbing.—A great improvement on the old climbing morning glory. Of large size and great variety. Pkt. 5c, oz. 20c, 1lb. 60c.

Fine Mixed.—Mixture of old varieties. Pkt. 2c, oz. 10c, 1lb. 20c, lb. 60c.

ARCTOTIS GRANDIS.—One of the finest floral novelties of the season. Its flowers are large and showy; the ray florets pure white on the upper surface, embellished with a narrow yellow zone at their base; the reverse of petals pale lilac-blue; the disc is light blue. Pkt. 10c.

MEXICAN BURNING BUSH.—This we consider one of the most ornamental border or hedge plants which has ever been brought out. It is known botanically as *Kochia Scoparia*. Early in the fall the ends of the shoots are thickly set with small, bright scarlet flowers, the bushy plants resembling balls of fire. Pkt. 10c.



ASTERS.—The numerous forms of the aster, and the now great variety of rich colors of its perfectly double flowers make it a leading favorite. For a summer and fall display it has no equal. Sow seed early and give deep, rich soil and plenty of mulching.

Crown.—(Cut No. 1.)—Center of each flower is white, surrounded by a broad margin of color, such as crimson, rose, violet, etc., flowers large, beautiful and showy; mixed colors. Pkt. 5c.

Perfection Mixed.—(Cut No. 2.)—A favorite, flowers large and almost perfectly round, incurved petals; height 18 inches to 2 feet. Pkt. 5c.

Snowball.—(Cut No. 3.)—Flowers are of refined and faultless form; pure white; beautifully imbricated and freely produced, 30 flowers being frequently borne on a single plant. Pkt. 10c.

Harlequin.—(Cut No. 4.)—A curious, attractive and beautiful variety with oddly spotted and striped very double flowers of red and blue. Pkt. 10c.

Cardinal.—This novelty which we are now offering for the first time, surpasses all others in brilliant cardinal red color and profusion of bloom. Begins blooming early in August and continues until late fall. Pkt. 15c.

Daybreak.—A new Aster, with large flowers intensely double and covering the plant in great profusion. The color is a beautiful sea-shell pink. It flowers early and continuously and nothing finer can be imagined. Pkt. 10c.

Giant Comet Mixed.—The shape differs from all others, resembling closely the large-flowered Japanese chrysanthemum. The flowers are from 3½ to 4½ inches in diameter, perfectly double, many handsome colors mixed. Pkt. 10c.

Vick's Branching Mixed.—A choice mixture of these popular favorites. Pkt. 5c.

Golden Ball.—The long sought novelty—a yellow aster. Pkt. 10c.

All Kinds Mixed.—Includes many varieties and colors. Pkt. 5c.

Royal Mixed.—A very choice selection of all the best sorts. No second grades. Pkt. 10c.

Dwarf Mixed.—A splendid assortment of the best dwarf growing varieties. Pkt. 5c.

BALSAM.—One of the most beautiful of our annuals, and under the old names, Lady Slipper and Touch-Me-Not, has always been popular but by the care and attention given it in the last few years it has been greatly improved. The flowers are most brilliantly colored, very large and double.

Peerless Mixed.—Made up from the best foreign and American strains. Flowers are double and of all known colors; plants loaded with hundreds of flowers. Pkt. 10c.

Camelia Flowered Mixed.—Very double, unusual size, perfect shape. Our mixture contains all best colors. Pkt. 5c.



PEERLESS MIXED BALSAMS

COPYRIGHTED BY
WILLIAM ANDERSON & CO
1896



ABUTILON.—A well-known green house shrub, also called Flowering Maple or Chinese Bell Flower. They are pretty plants, useful for pots in summer and the bell-shaped flowers are beautifully dotted and handsomely veined. Are of easy culture; bloom readily from seed the first summer if seed is started early in the house. Finest varieties mixed. Pkt. 10c.

AMARANTHUS, Tricolor.—Leaves yellow, red and green; well known as "Joseph's Coat." Very showy in beds alone. Hardy annual; two feet high. Pkt. 3c.

Caudatus.—(Love Lies Bleeding.) Produces long, drooping chains of brilliant flowers. Pkt. 5c.

Mixed Varieties.—A great assortment. Pkt. 5c.

ASPERULA AZUREA SETOSA.—Produces many small light blue fragrant flowers. Pkt. 5c.

AMORBIUM-ALATUM GRANDIFLORUM.—A pretty double white everlasting. Pkt. 4c.

ARABIS ALPINA.—Pure white early flowering plants. Perennial. Pkt. 10c.

ADLUMIA.—(Mountain Fringe.)—A beautiful hardy perennial vine, with fern-like foliage of a pale green color, with pretty flesh colored blossoms; called Allegheny Vine. Pkt. 10c.

ANTIRRHINUM.—(Snapdragon.)—One of the most beautiful and useful border plants, blooming profusely the first season from seed, until after frost. Our mixtures contain all the new and choice colors, including the beautiful, striped, variegated and margined.

Tall Varieties Mixed.—Pkt. 3c.

Giant Flowered.—A most beautiful new class, having all the finest colors and markings. Immense spikes and flowers. Pkt. 10c.

AQUILEGIA.—(Columbine) Chrysantha.—Yellow flowered. Pkt. 5c. Coerulea.—Large blue and white flowers. Pkt. 7c. White.—Desirable for cemetery. Pkt. 10c. Double Mixed.—Pkt. 5c.

AMPELOPSIS VEITCHI.—(Boston Ivy.)—A Pretty hardy climber. Pkt. 5c.

BEGONIA.—Seeds should be sown on top of the soil in a box, pressing soil evenly with a block. Cover box with a glass and give partial shade until up.

Vernon.—Comes absolutely true from seed. The plants grow rapidly and thrive amazingly under our hot summer sun. Pkt. 10c.

Rex.—The king of Begonias and will always be very elegant and popular. Ornamental mixed varieties. Extra fine mixed. Pkt. 25c.

Mixed Varieties.—Many excellent flowering varieties. Pkt. 10c.

BRACHYCOME.—Pretty for borders. Blue and white. Mixed. Pkt. 5c.

BROWALLIA.—Grandiflora.—This new sort is without doubt the most beautiful of all the Browallias, covered with an abundance of delightfully large, sky-blue flowers. Pkt. 10c.

BRYONOPSIS.—A hardy climbing annual, with nice ivy like foliage. Pkt. 5c.

CANTERBURY BELLS.—Single and double, mixed colors. Pkt. 6c.

CALLIOPSIS OR COREOPSIS.—Mixed Colors.—Flowers of every shade of yellow, orange, crimson, red and brown. Pkt. 3c.

Lanceolata.—(New Golden Coreopsis.)—One of the most showy hardy perennials grown, bearing in great profusion for a long period during the summer, large flowers of bright golden yellow. Grows anywhere. Pkt. 8c.

Golden Wave.—Plant very bushy and compact, reaching two feet in height, and covered from July to October with hundreds of beautiful golden blossoms two inches in diameter with small dark centers. It is indeed a wave of gold. Pkt. 8c.

Double.—A grand novelty, bearing double flowers. Pkt. 10c.

CALENDULA.—Oreole.—The extra large double flowers are indescribably rich and glowing in tone of intensely bright golden yellow; wonderfully free flowering plant. Pkt. 5c.

Fine Mixed.—Many nice varieties. Pkt. 3c.

CARNATION.—Double Extra Mixed.—The best green house varieties. Very fragrant. Our seed is unsurpassed. Pkt. 10c.

Marguerite.—These lovely, fragrant flowers are in full bloom in about four months after sowing the seed. The plants succeed alike in the open garden or in pots, and the flowers are of high type, exquisitely sweet, fully 80 per cent perfectly double. The range of color, marking, variegations and shading are simply wonderful. Pkt. 5c.

CINERARIA.—As will be seen by the illustration from a single plant, the Cineraria is a wonder for wealth of bloom. The plants grow perfectly circular in shape and are entirely covered with brilliant blossoms of all shades of blue, purple and crimson. Most of the varieties have a well-defined white eye and are unsurpassed for attractiveness. Large flowering. Pkt. 15c.

CROTOLARIA.—Retusa.—Flowers are in long spikes and the separate blooms greatly resemble sweet peas in form and some call them Yellow Sweet Peas. Start seed early and it will bloom the first year. Per Pkt. 10c.

COBCEA SCANDENS.—Magnificent climber of rapid growth and beautiful blue flowers. The seed should be planted edgewise in moist earth. Pkt. 10c.

CYPRESS VINE.—A beautiful rapid climber with delicate, dark green foliage and an abundance of bright star-shaped scarlet and white blossoms, which in the bright sunshine present a mass of beauty.

Scarlet.—Very bright. Pkt. 5c. White.—Pretty in contrast with scarlet. Pkt. 5c.

Mixed Colors.—The above mixed. Pkt. 3c, oz. 30c.

New Ivy-Leaved.—Entirely distinct from all other varieties, both in flowers and foliage. The ivy-like leaves make a dense screen from which the pretty fiery orange-scarlet flowers stand out in countless numbers. Pkt. 7c.

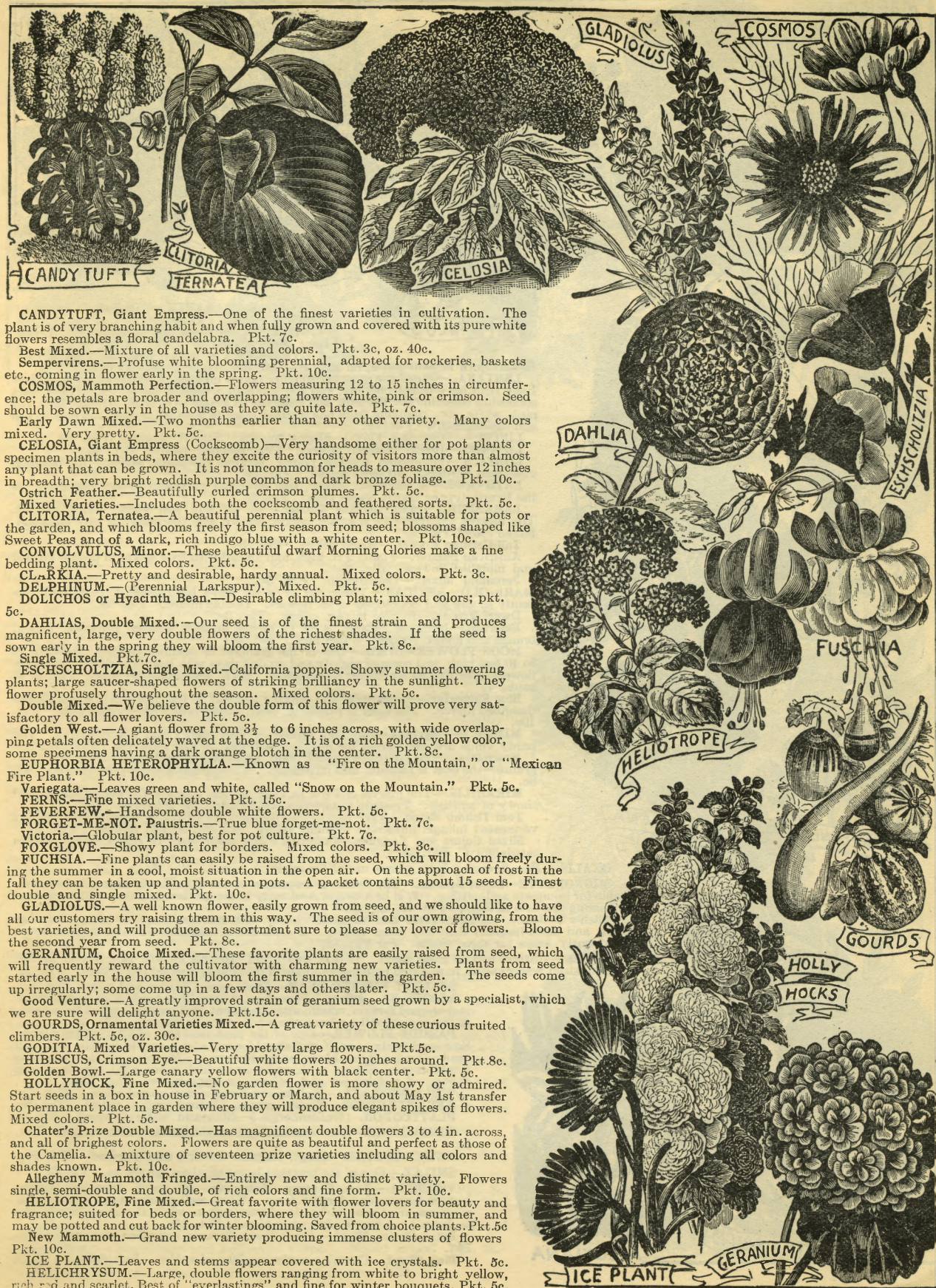
CANARY BIRD FLOWER.—One of the most beautiful climbers with delicate, finely cut foliage and curious bright yellow flowers resembling the canary bird in shape and color. Pkt. 5c.

CANNA.—Fancy Large Flowered.—Unquestionably one of the finest of bedding plants. Their handsome leaves combined with their varied and rich colored flowers have an extremely fine effect. Seed should be soaked in warm water for several hours. Pkt. 5c, oz. 25c.

CAMPANULA.—An old favorite perennial, bearing an abundance of handsome flowers which almost hide the plant.

Cup and Saucer.—A beautiful variety. The bell is nearly four inches in diameter, presenting the form of a saucer. Mixed colors. Pkt. 10c.

Mixed Varieties.—Choice mixture of all the best double and single varieties, suited for growing together. Pkt. 5c.



CANDYTUFT, Giant Empress.—One of the finest varieties in cultivation. The plant is of very branching habit and when fully grown and covered with its pure white flowers resembles a floral candelabra. Pkt. 7c.

Best Mixed.—Mixture of all varieties and colors. Pkt. 3c, oz. 40c.

Sempervirens.—Profuse white blooming perennial, adapted for rockeries, baskets etc., coming in flower early in the spring. Pkt. 10c.

COSMOS, Mammoth Perfection.—Flowers measuring 12 to 15 inches in circumference; the petals are broader and overlapping; flowers white, pink or crimson. Seed should be sown early in the house as they are quite late. Pkt. 7c.

Early Dawn Mixed.—Two months earlier than any other variety. Many colors mixed. Very pretty. Pkt. 5c.

CELOSIA, Giant Empress (Cockscomb).—Very handsome either for pot plants or specimen plants in beds, where they excite the curiosity of visitors more than almost any plant that can be grown. It is not uncommon for heads to measure over 12 inches in breadth; very bright reddish purple combs and dark bronze foliage. Pkt. 10c.

Ostrich Feather.—Beautifully curled crimson plumes. Pkt. 5c.

Mixed Varieties.—Includes both the cockscomb and feathered sorts. Pkt. 5c.

CLITORIA, Ternatea.—A beautiful perennial plant which is suitable for pots or the garden, and which blooms freely the first season from seed; blossoms shaped like Sweet Peas and of a dark, rich indigo blue with a white center. Pkt. 10c.

CONVOLVULUS, Minor.—These beautiful dwarf Morning Glories make a fine bedding plant. Mixed colors. Pkt. 5c.

CLARKIA.—Pretty and desirable, hardy annual. Mixed colors. Pkt. 3c.

DOLPHINUM.—(Perennial Larkspur). Mixed. Pkt. 5c.

DOLICHOS or Hyacinth Bean.—Desirable climbing plant; mixed colors; pkt. 5c.

DAHLIAS, Double Mixed.—Our seed is of the finest strain and produces magnificent, large, very double flowers of the richest shades. If the seed is sown early in the spring they will bloom the first year. Pkt. 8c.

Single Mixed. Pkt. 7c.

ESCHSCHOLTZIA, Single Mixed.—California poppies. Showy summer flowering plants; large saucer-shaped flowers of striking brilliancy in the sunlight. They flower profusely throughout the season. Mixed colors. Pkt. 5c.

Double Mixed.—We believe the double form of this flower will prove very satisfactory to all flower lovers. Pkt. 5c.

Golden West.—A giant flower from 3½ to 6 inches across, with wide overlapping petals often delicately waved at the edge. It is of a rich golden yellow color, some specimens having a dark orange blotch in the center. Pkt. 8c.

EUPHORBIA HETEROPHYLLA.—Known as "Fire on the Mountain," or "Mexican Fire Plant." Pkt. 10c.

Variegata.—Leaves green and white, called "Snow on the Mountain." Pkt. 5c.

FERN.—Fine mixed varieties. Pkt. 15c.

FEVERFEW.—Handsome double white flowers. Pkt. 5c.

FORGET-ME-NOT, Palustris.—True blue forget-me-not. Pkt. 7c.

Victoria.—Globular plant, best for pot culture. Pkt. 7c.

FOXGLOVE.—Showy plant for borders. Mixed colors. Pkt. 3c.

FUCHSIA.—Fine plants can easily be raised from the seed, which will bloom freely during the summer in a cool, moist situation in the open air. On the approach of frost in the fall they can be taken up and planted in pots. A packet contains about 15 seeds. Finest double and single mixed. Pkt. 10c.

GLADIOLUS.—A well known flower, easily grown from seed, and we should like to have all our customers try raising them in this way. The seed is of our own growing, from the best varieties, and will produce an assortment sure to please any lover of flowers. Bloom the second year from seed. Pkt. 8c.

GERANIUM, Choice Mixed.—These favorite plants are easily raised from seed, which will frequently reward the cultivator with charming new varieties. Plants from seed started early in the house will bloom the first summer in the garden. The seeds come up irregularly; some come up in a few days and others later. Pkt. 5c.

Good Venture.—A greatly improved strain of geranium seed grown by a specialist, which we are sure will delight anyone. Pkt. 15c.

GOURDS, Ornamental Varieties Mixed.—A great variety of these curious fruited climbers. Pkt. 5c, oz. 30c.

GODITIA, Mixed Varieties.—Very pretty large flowers. Pkt. 5c.

HIBISCUS, Crimson Eye.—Beautiful white flowers 20 inches around. Pkt. 8c.

Golden Bowl.—Large canary yellow flowers with black center. Pkt. 5c.

HOLLYHOCK, Fine Mixed.—No garden flower is more showy or admired. Start seeds in a box in house in February or March, and about May 1st transfer to permanent place in garden where they will produce elegant spikes of flowers. Mixed colors. Pkt. 5c.

Chater's Prize Double Mixed.—Has magnificent double flowers 3 to 4 in. across, and all of brightest colors. Flowers are quite as beautiful and perfect as those of the Camelia. A mixture of seventeen prize varieties including all colors and shades known. Pkt. 10c.

Allegheny Mammoth Fringed.—Entirely new and distinct variety. Flowers single, semi-double and double, of rich colors and fine form. Pkt. 10c.

HELIOTROPE, Fine Mixed.—Great favorite with flower lovers for beauty and fragrance; suited for beds or borders, where they will bloom in summer, and may be potted and cut back for winter blooming. Saved from choice plants. Pkt. 5c.

New Mammoth.—Grand new variety producing immense clusters of flowers. Pkt. 10c.

ICE PLANT.—Leaves and stems appear covered with ice crystals. Pkt. 5c.

HELICHRYSUM.—Large, double flowers ranging from white to bright yellow, rich red and scarlet. Best of "everlastings" and fine for winter bouquets. Pkt. 5c.

**GLOBE AMARANTH.**—"Bachelor's Buttons."

Mixed colors. Pkt 5c.

GLOXINIA.—Greenhouse plants. Brilliant flowers. Mixed. Pkt. 25c.**GYPSOPHILA** or **Angels Breath.**—Tiny little flowers born in abundance, on long graceful, branching stems. Pkt. 5c.**LANTANA.**—One of the most satisfactory plants grown. It is the flower for everybody both for outdoor bedding, and blooming all winter in the house. The flowers somewhat resemble the Verbena, and embrace all shades of orange, sulphur, lilac, red pink, white, etc., changing from one distinct color to another as they increase in age and development. Pkt. 7c.**LINUM**—(Flowering Flax.)—Showy annual. Scarlet flowers. Pkt. 5c.**LUPINUS.**—Bright colored flowers. Fine bedding plant. Pkt. 5c.**LOBELIA.**—Handsome trailing plants, profuse bloomers; elegant for baskets, vases and borders. All sorts mixed. Pkt. 5c.**LATHYRUS.**—A beautiful, showy, free flowering perennial known commonly as the Everlasting or Hardy Sweet Peas. Pkt. 5c.**LARKSPUR.**—Dwarf German Rocket. An old and well known hardy annual. The flowers are borne in compact spikes, showy and desirable for any situation. Mixed colors. Pkt. 5c.**Tall German Rocket.**—Mixed colors. Pkt. 3c.**American Banner.**—Plants 2 ft. high, and loaded with long spikes of double striped and blotched flowers. Pkt. 10c.**Perennial Mixed.**—Delphinium. Pkt. 5c.**MARIGOLD—AFRICAN.**—These old favorites have been greatly improved recently in size and doubleness of its flowers. Double mixed. Pkt. 3c.**Dwarf French.**—Double mixed, colors. Pkt. 3c.**Eldorado.**—Immense flowers, 9 to 14 inches around; double; primrose, lemon, orange and golden shades. 3 feet high. Pkt. 5c.**MOON FLOWER—White.**—One of the grandest of summer climbers, growing 25 to 40 feet high, and covered nightly and on dull days with beautiful white, moon-like flowers from five to six inches in diameter. Rich, jessamine-like odor. Pkt. of 10 seeds, 7c.**Blue Flowering.**—A beautiful and striking contrast to the true White Moon Flower described above. The color is exquisite, clear, satiny blue with crimson bars. Pkt. 10c.**MIMULUS—Tigrinus.**—(Monkey Flower.)—Very showy and free flowering. The hardy kinds are well suited for out-door culture. Mixed varieties. Pkt. 10c.**Moschatus.**—The well-known musk plant, quite pretty, and has a strong musk fragrance—the odor is pleasant and refreshing. A nice plant also for pot culture. Pkt. 8c.**MIRABILIS.**—The marvel of Peru, or Four o'clock, is one of the most brilliant and showy of annuals. Presents a gorgeous sight during the afternoon.**Tom Thumb Mixed.**—Very handsome, compact dwarf bushy plant, with golden variegated foliage; numerous brilliant yellow, red, and striped flowers. Pkt. 5c.**Mixed Colors and Varieties.**—Contains a fine assortment of colors and is always satisfactory. Pkt. 3c.**OXALIS.**—Free-flowering little plants useful for edgings; mixed. Pkt. 5c.**MIGNONETTE.**—Sweet Scented.—The delicious fragrance of the Mignonette makes it indispensable for bouquets and cutting. It is best to sow seed early in the garden, and they will commence blooming the first of June. Pkt. 2c, oz. 15c.**Allen's Defiance.**—A remarkable and valuable variety with mammoth spikes 12 to 15 inches long, and more fragrant than any other variety. Florets are of immense size and the cut flower frequently keeps for three weeks. Per Pkt. 8c.**Machet.**—Distinct sort of great merit. It is of dwarf and vigorous growth, and throws up numerous stout flower stalks, terminated by massive spikes of deliciously scented red flowers. Pkt. 5c.**SCARLET RUNNER BEAN.**—Dark scarlet flowers and pods. Pkt. 5c.**NICOTIANA.**—Affinis.—This plant is literally covered with large, white, star-shaped flowers, which, after being cut, will remain perfect for a week. A few plants will perfume the whole yard or garden. Pkt. 5c.**PASSION FLOWER.**—One of the most desirable of all climbing plants. Sow seed early, and if well cared for and seasons are favorable, vines will send out magnificent blossoms the first year. Its color is odd, comprising a combination of blue, pink, and white, which is beautiful, very large and showy, of a feathery and velvet-like appearance. Pkt. 10c.**VIOLA ODORATA.**—Well known Sweet violet; mixed colors. Pkt. 10c.**XERANTHEMUM.**—Easily grown, blooms freely; mixed. Pkt. 10c.**PLATYCODON.** (Wahlenbergia.)—Blue and white flowered. Pkt. 7c.**RHODANTHE.**—Fine everlastings; rosy crimson, yellow center. Pkt. 5c.**SWEET SULTAN.**—Large, fragrant flowers; mixed colors. Pkt. 10c.**SMILAX.**—One of the prettiest house climbers for winter. Pkt. 8c.**VERBENA.**—New Century Mammoth.—Of most beautiful colors, largest flowers and largest truss. When well grown every flower truss measures over nine inches in circumference, while the single florets are as large as a twenty-five cent piece. Pkt. 15c.**Extra Choice Mixed.**—From finest German collection of named sorts. Pkt. 7c.**Fine Mixed.**—Contains a nice variety of colors. Pkt. 4c.



PORTULACA, Grandiflora Single Mixed.—This old favorite is brightest in the hot, dry weather, when other flowers are drooping. They are of almost every conceivable shade of color, and will make one of the brightest spots in the garden. Large flowered. Pkt. 3c.

Double Mixed.—Very handsome, double as a rose, and contains a color and shading unknown in the single. Our seed is extra choice and will produce sixty to seventy-five per cent of double flowers. Pkt. 10c.

RICINUS, Cambogiensis.—This beautiful plant grows to a height of 8 feet, and of a most stately, majestic tropical appearance. Large palm-like leaves of darkest reddish maroon, covered with a bright bronzy lustre, while the main stalk and leaf stems are ebony black. Seed will always be scarce and high. Pkt. of ten seeds, 10c.

Zanzibarensis.—Grows to a height of 12 to 14 feet, with leaves two to nearly four feet across. A handsome specimen plant for lawns. Pkt. 5c.

Sanguineus Tricolor.—Blood red stalk; very attractive. Pkt. 5c.

All Varieties Mixed.—Pkt. 4c.

SALPIGLOSSIS, New Variegated.—Much larger than the common Salpiglossis. The surface is soft and velvety and the wealth of color marvelous. The colors range from pure white to dark yellow, dark red and purplish black, with all the shades between beautifully veined and mottled; blooms all summer and until severe frost. Pkt. 8c.

SALVIA, Splendens.—One of the most brilliant of flowers; it thrives in any light, rich soil; often called flowering sage. Free bloomers. A brilliant scarlet. Very fine. One of the most satisfactory of all bedding plants. Pkt. 10c.

STOCKS, Large Flowering Dwarf German.—Sometimes called Gilliflowers. These popular flowers are easily grown, and are so fragrant, of such great beauty and have so many good qualities that they deserve a place in every garden. They should be given good, rich soil to grow in. Mixed colors. Pkt. 5c.

PRINCESS ALICE.—Perpetual White.—Of strong growth, fine branching habit, and, if sown early, will bloom from May until November. Flowers very large and pure white, and the more often they are cut the better they like it. Deliciously fragrant. Pkt. 10c.

SWEET WILLIAM, Giant Double Mixed.—Hardy plants about one foot high, of extreme richness and variety of color, and also deliciously sweet scented; for clumps or borders no plant can surpass this old favorite. Pkt. 5c.

Single Varieties Mixed.—The old favorite. Pkt. 5c.

SUNFLOWER, Globe of Gold.—Densely double, globe-shaped flower of rich, deep, golden yellow color, being veritable globes of gold. A wonderfully beautiful flower. Pkt. 7c.

Excelsior Branching.—This new sunflower caused great attention in Europe. Has a single flower, five inches across, producing a pyramid of bloom. Pkt. 10c.

Silver Leaved.—Leaves long and densely covered with long white hairs which give it a peculiar shining silvery appearance. Flowers clear golden yellow, three to four inches across. Pkt. 5c.

Peerless Mixed.—A splendid assortment of fifteen of the best varieties grown together on our grounds. It includes some which are both curious and desirable. Pkt. 5c, oz. 15c

Mammoth Russian.—Largest of all, quite showy, and the most profitable to grow for feeding purposes. Per oz. 5c, lb. 20c.

TORENIA, Fournieri.—Beautiful free flowering, trailing plants, well suited for baskets, vases, and in moist situations out of doors. A handsome plant, but not hardy. Pkt. 10c.

WILD CUCUMBER.—The quickest climber known for covering verandas, old trees and houses, trellises, etc., never suffering from the heat, but retaining its fresh and lively green color; never infested with insects, and very profuse in blooming. Pkt. 5c.

WISTARIA.—One of the most popular, hardy vines climbing to a height of fifty feet or more. It is perennial and easily grown from seed. Of luxuriant and rapid growth, bearing in the spring immense panicles of purple flowers produced in great profusion. Pkt. 10c.

SCABIOSA.—(Mourning Bride.)—Double dwarf varieties. Many colors mixed. Pkt. 5c.

SENSITIVE PLANT.—A pretty, curious plant, the leaves closing when touched. Pkt. 5c.

LYCHNIS.—Hardy perennials blooming first year; mixed varieties. Pkt. 5c.

THUNBERGIA.—Beautiful rapid growing climbers; bloom freely. Pkt. 5c.

ZINNIA, Curled and Crested.—Large double flowers with peculiarly curled petals. Pkt. 5c.

Pigmy or Lilliput.—Small bushy plants bearing many brilliant flowers. Mixed colors. Pkt. 7c.

New Zebra.—Beautifully and brilliantly striped. Mixed colors. Pkt. 5c.

Finest Double Mixed.—All colors. Pkt. 3c.

CACALIA, Coccinea.—Pretty little scarlet tassel flowers. Pkt. 5c.

KALEIDOSCOPE
NASTURTIUM

POPPIES.—Shirley.—A new single of the most delicate shades. Pkt. 5c.

Double Carnation.—A splendid assortment of the best double carnation flowered sorts. Pkt. 5c.

Annual Varieties Mixed. Pkt. 3c.

Oriental Hybrids.—For brilliancy of color there is nothing to equal these Oriental Poppies. The flowers are of enormous size, often measuring over 6 inches in diameter. They are hardy perennials, increasing in size and beauty every year. Pkt. 10c.

PETUNIA.—Grandiflora Mixed.—Very large, elegant flower; a great improvement and fully twice the size of the old sorts, with the most beautiful shades of crimson, white, rose, maroon, etc., blotched, striped, veined, bordered, marked and fringed. Pkt. of 200 seeds 10c.

Giant Fancy Flowering.—A new strain and undoubtedly the handsomest of all. See Novelties for description. Pkt. 25c.

Double Inimitable.—A splendid mixture. Pkt. 25c.

Fine Mixed.—Pkt. 3c.

PHLOX DRUMMONDII.—Grandiflora Mixed.—This special large flowering strain has been selected with great care for many years, until we now have an ideal flower of immense size and for beauty of color they are unsurpassed. Pkt. 8c.

Fringed Mixed.—Very handsome. The flowers are of the most velvety colors and handsomely fringed. Pkt. 7c.

Mixed Varieties.—A mixture of the common varieties. Pkt. 5c.

SWEET PEAS.—May well be called America's favorite, as it is such a popular and easily grown flower that rich and poor alike can enjoy its fragrance and beauty.

Imperial Mixed.—Sixty of the best varieties carefully selected so as to get the proper proportion of each color in the assortment. This makes the choicest mixture ever offered. Pkt. 5c, oz. 10c, 1 lb. 25c, lb. 75c.

Perfect Mixed.—Of graceful form, charming color, exquisite fragrance and simple loveliness. This mixture contains many choice new varieties and some old favorites. Pkt. 5c, oz. 10c, 1 lb. 20c, lb. 50c.

Double Mixed.—Saved from the best double flowered plants. Pkt. 5c, oz. 10c, 1 lb. 30c, lb. 85c.

Fine Mixed.—A nice mixture for a very low price. Pkt. 2c, oz. 5c, 1 lb. 15c, lb. 35c.

California Giants.—Tourists from the east are always greatly surprised and delighted with the Sweet Peas which bloom so freely in California. One of the best growers there, has, during the past few years been selecting seed from the specially large flowered and we now offer it in a splendid mixture. Pkt. 5c, oz. 15c, 1 lb. 40c.

Cupid Mixed.—Of dwarf growth. Flowers are pretty and freely produced. Mixed colors. Pkt. 5c, oz. 10c, 1 lb. 25c.

Bush Varieties Mixed.—Of distinct upright growth, forming a bush instead of climbing; many colors. Pkt. 5c, oz. 10c, 1 lb. 25c, lb. 75c.

NASTURTIUM.—These may be classed among the most beautiful and showy annuals. They are of very easy culture, and make a continuous show of bloom.

Imperial Mixed.—Includes about twenty of the dwarf varieties, selected from both American and foreign growers. The varieties are so selected that the colors harmonize beautifully and delight flower lovers, as they are of neat, compact habit of growth, and bloom freely when planted in beds, producing a mass of colors. Pkt. 5c, oz. 15c, 1 lb. 50c.

Dwarf Varieties Mixed.—A nice mixture of colors of this free blooming class. Pkt. 3c, oz. 10c, 1 lb. 20c, lb. 65c.

Kaleidoscope.—The finest of all climbing Nasturtiums owing to the immense number and great variety of flowers produced. A single plant will often have in bloom on it at one time a dozen or more apparently distinct varieties and colors, thus giving it a most charming appearance. Some of the flowers are of clear color and various shades of yellow, orange, red, pink and creamy white, while others are variously blotched, splashed, striped or bordered with rich contrasting shades. This gives the plant a decidedly unique appearance. Pkt. 10c, oz. 30c.

Madam Gunter's Hybrids.—Best mixture of climbing sorts. There are a great variety of colors. Pkt. 5c, oz. 15c.

Tall Varieties Mixed.—Pkt. 3c, oz. 10c, 1 lb. 30c.

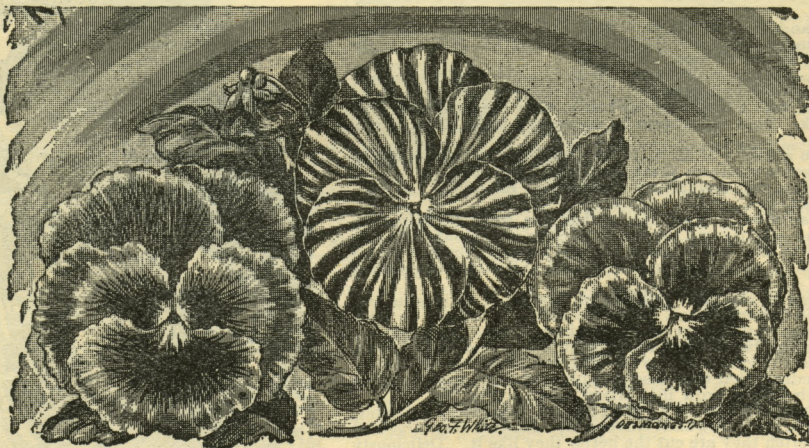
PANSIES.—Pansies are a specialty with us, and we use the greatest care in growing and importing the best strains of these universal favorites. Circular giving full directions for growing pansies will be sent free if requested.

New Rainbow.—The best novelty in pansies and the most charming variety ever sent out. We have given it the name New Rainbow, and consider it very appropriate owing to its beautiful iridescent colors. Our illustration shows three of the leading types of this mixture by which you will see the varied styles of variegation, but no illustration can do justice to its superior beauty. There is an almost endless variety of colors. Pkt. 25c.

Giant Trimardeau.—Flowers of very large size, some have measured four inches in diameter. Each flower is marked with three large blotches or spots and stands well above the foliage. Choice mixed colors. Pkt. 10c.

Masterpiece.—This superb new pansy is distinct from all others in the form of flowers, the border of every petal being conspicuously undulated and curled, giving the flowers the appearance of a double pansy. The flowers are extremely large. Pkt. 20c.

Mammoth Butterfly.—A strain of pansy of matchless forms, colors and markings, with flowers half as large again as ordinary pansies. Pkt. 10c.



NEW P INBOW PANSIE

International Mixture.

—In almost every country in the world there are pansy specialists, notably those of Scotland, Belgium, France, Germany and Switzerland. Each have their idea of perfection. This mixture consists of a grand assortment from the world's leading growers. Also many choice American strains. If you like pansies you must have the International Mixture. Pkt. 20c, 1 oz. \$3.00.

Imperial German

Mixed. — Magnificent flowers of richest hues; one of our most popular sorts and of a high standard of excellence. Pkt. 10c, 1 oz. \$1.00, oz. \$3.50.

Fine Mixed.

— Of many good sorts. Pkt. 5c, oz. \$1.00.



FLOWER BULBS



GLORIOSO,
FLORENCE VAUGHAN,
MAD. CROZY CANNAS.

Burbank.—The well known Orchid Flowering Canna. The flowers are truly gigantic in size, the upper petals spreading fully 7 inches. Flower is rich canary yellow; crimson spots near center. Height 5 feet. Each 15c; dozen \$1.20.

Pennsylvania.—Foliage green, flowers very large, bright scarlet, shaded orange, height 6 feet. Each 15c; dozen \$1.50.

Gloriosa.—One of the grandest and most beautiful varieties ever brought out; height 2 to 2½ feet, with bright green foliage. It bears long spikes of bloom and the individual flowers are immense. Color is rich crimson scarlet with a distinct golden band around each petal of crimson and gold." A perpetual bloomer, blend in so as to make a perfect "symphony" Each 25c; dozen \$2.50.

DAHLIAS.—One of the showiest of all autumn flowers. Commencing to flower in July, they are a perfect blaze of bloom until stopped by frost. Especially fine for cut flowers. They have been greatly improved and we now grow acres of them to supply the demand. For best results start roots early in house. Late in the season, when dry roots become exhausted, we then fill orders with strong rooted pot plants.

Grand Duke Alexis.—Without exception the most unique and grandest Dahlia ever sent out. Flowers are of largest size known in dahlias, being 18 in. in circumference, and of most beautiful form, petals being rolled up so that they overlap each other. Color pure snow white, slightly tinged with delicate pink at center. Ea. 25c; 3 for 65c.

Maid of Kent.—The richest crimson velvet color imaginable and about half of the petals are tipped with a large spot of white, thus adding greatly to its brilliancy. Flowers are very large. Each 20c; doz. \$2.00.

Sylvia.—Flowers 4 to 6 inches in diameter, of fine form and full to the center, which is white shading to soft pink on the outer petals. An early and profuse bloomer, and excellent for cutting. Each 25c; doz. \$2.50.

Special.—One strong, well grown plant of each of the above three exquisite Dahlias sent postpaid for only 40c. Better order early and we will delay shipping until time for planting out, if preferred.

Clifford W. Bruton.—Extra large flowers of a bright, golden yellow, perfect in shape and form; very early. Each 20c; 3 for 50c.

Queen Victoria.—The finest deep yellow variety. Blooms early, very freely and continuously. Each 15c, 3 for 40c.

Fancy Double Mixed.—The handsome tipped, striped, spotted and variegated sorts in a splendid mixture. Each 25c, dozen \$2.25.

Double Mixed Varieties.—Contains a good proportion of best scarlet, yellow and white varieties, besides many other shades which are popular. Each 10c, dozen \$1.00.

GLADIOLUS.—These are a specialty with us and our fields devoted to them make a most magnificent sight each year, appearing at a distance a mass of bright colors.

Red Varieties Mixed.—Each 5c, doz. 40c. Second size, doz. 25c.

Altoona Mixture.—The best mixture in existence. Large bulbs, each 8c; doz. 75c, 100 for \$5.00.

Fine Mixed.—Each 4c, doz. 35c, 100 for \$2.00. Second size, doz. 20c, 100 for \$1.25.

CALADIUM.—**Esculentum.** (Elephant's Ear).—A splendid tropical plant, growing 4 to 5 feet, with immense leaves, beautifully veined and variegated with different shades of green; leaves often growing three feet long. Medium sized bulbs 10c, 3 for 25c; large bulbs 20c, 3 for 50c; mammoth 35c, 3 for \$1.00.



GRAND DUKE ALEXIS DAHLIA



ALTOONA GLADIOLUS



CALADIUM ESCULENTUM.



LILY OF THE VALLEY

TUBEROSES.—New Excelsior Pearl.—The tuberose is justly a universal favorite and very easily grown. The **New Excelsior Pearl Tuberoses** have been selected with great care and are superior to the ordinary Pearl tuberoses. This variety is characterized by its short, robust stem and long spikes of large flowers, which are perfectly double and twice the size of the common tuberose, while of equally delicious fragrance. Spikes frequently bear 30 to 50 flowers, remaining in bloom for a long time. They are always wax-like, pure white, and unsurpassed for button-hole bouquets. You will be greatly pleased with them. Choicest large bulbs each 5c, dozen 40c; 100 for \$2.65.

TRITOMA.—Pfitzeri.—At all floral exhibitions, and when sent as cut-flowers to market, this plant attracts great attention. It grows from 3 to 4 feet high and the flower measures 12 to 15 inches long. They are a dazzling scarlet, lower half of flower tinged with rich orange. Each 20c, 3 for 50c.

GLOXINIA.—Giant Flowered.—One of the most beautiful and satisfactory flowers. Has large trumpet shaped blossoms of crimson rose, scarlet, purple, white, etc., tinted with dots of contrasting color. One bulb planted in a 5-inch pot will make a magnificent show, and if bulbs are planted at intervals will give a continuous bloom for a long period. Each 15c; dozen \$1.50.

MADERIA VINE.—A beautiful tuberose rooted climber, with glossy green leaves and handsome racemes of fragrant white flowers. It is pretty to use for shading a porch or veranda. Each 5c, dozen 45c.

RESURRECTION PLANT.—A curiosity sure to interest the children. Looks like a ball of dried moss, but when dropped into a bowl of tepid water, it quickly opens out into a beautiful fern-like plant. Each 10c, 3 for 25c.

OXALIS.—Shamrock.—Leaves resemble four-leaved clover; flowers rose color and borne in profusion on vine-like stems, which make them suitable for cutting for bouquets as well as pretty for border. Doz. 10c, 100 for 50c; mammoth bulbs, per doz. 15c.

Dieppi Alba.—Pretty low-growing variety, with light green leaves and clusters of pure white bell-shaped flowers; blooms profusely. Doz. 10c, 100 for 40c.

Lasandria.—Large, dark green, palmate or five-fingered leaves, with clusters of rosy pink flowers. Dozen 10c, 100 for 50c; mammoth bulbs, per dozen 15c.

ZEPHYRANTHES.—Popularly known as "Zephyr Flowers," and "Fairy Flowers." Flower with great profusion during the summer. Pink and white. Each 5c, dozen 50c.



OXALIS SHAMROCK

FANCY-LEAVED CALADIUM.—These have in recent years grown very rapidly in popular favor, not only for the decoration of the conservatory, greenhouse and window boxes, but nearly all of the varieties succeed admirably if planted out of doors, when the ground has become warm, in partlyshaded, sheltered borders. Leaves variegated red, yellow, white, brown, green, etc. Many choice varieties mixed, each 20c, dozen. \$2.00.

LILIUM
AURATUM

LILY OF THE VALLEY.—A well known and universally admired spring flowering plant, bearing bell-shaped, freely produced and powerfully fragrant flowers. They are charming when grown in large patches as their handsome green leaves and lovely sprays of flowers make a beautiful effect together. When once planted and established the crowns increase in number and the larger ones flower each year without attention. Now is the time to set out a bed of these delightful flowers. Our price is low for choice stock such as we send out. Four strong roots for 15c, doz. 35c.

LILIES.—Nothing can surpass the Lily in beauty, purity, delicacy and stately, magnificent grandeur. A few clumps planted in some place in your yard where they will not be disturbed from year to year, will reward you with abundant flowers.

Auratum.—(Japanese Gold-Banded Lily).—This is justly entitled to the name often given it, "The Queen of Lilies." The immense flowers are produced in great profusion and are deliciously fragrant. The large white petals are spotted with rich chocolate crimson, and have a bright golden yellow band through the center of each. Each 20c, doz. \$1.75; extra large bulbs each 30c, doz. \$2.75.

Speciosum Rubrum.—Flowers are white, with a deep rosy or crimson band on each petal, with deeper colored spots between. Ea. 15c, 3 for 40c.

Speciosum Album.—Has large white flowers of great substance, beautifully recurved. Each 20c, 3 for 50c.

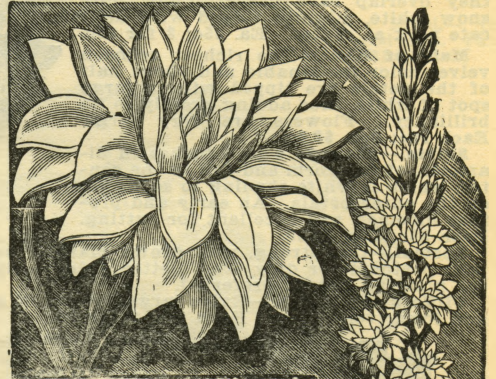
Double Tiger Lily.—Densely double, color orange red, spotted with black. Blooms freely. Each 15c, doz. \$1.35.

Lemon Lily.—Not a true lily as the bulb is of different shape, but the flower is very much like the Liliolum Speciosum in form and about 3 inches in diameter. The color is a clear lemon yellow of very bright pleasing appearance. Each 15c; doz. \$1.50.

Orange Lily.—(Hemerocallis Demorteri).—Similar to Lemon Lily, but of fine orange color. Each 15c, doz. \$1.50.

HYACINTHUS CANDICANS.—Has a stem 3 or 4 feet high, which bears quantities of drooping, ivory white bell-shaped flowers of delicate fragrance. Appear like Giant Snowdrops. Each 5c, dozen 50c.

TIGRIDIAS.—Peacock or Shell Flower.—Handsome summer flowering bulbs, producing large, gorgeous flowers. They flower freely throughout the summer and are of various colors, red, white, yellow, etc., handsomely spotted. Each 5c, dozen 50c.



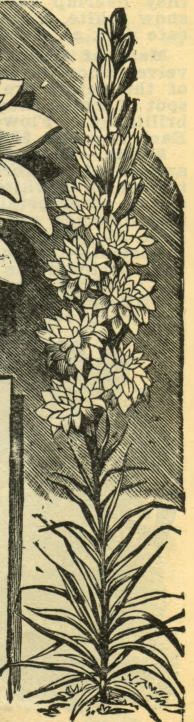
PEARL TUBEROSE

CALLAS.—Mammoth White.—Largest flowering variety and most majestic. It is of perfect flowering form, with large tropical appearing leaves of bright green color, and yielding throughout the season a profusion of white flowers. Large bulbs each 25c, 3 for 60c; medium size each 15c, 3 for 40c.

Elliottiana.—Bright golden yellow. Each 50c.

Spotted Leaf.—for planting in the garden in summer. Each 10c, doz. \$1.00.

MONTBRETIA.—Crocsmiflora.—A showy summer-flowering plant producing many handsome star-shaped blossoms of an orange red color. Hardy, and improve each year if left undisturbed. Each 5c, dozen 40c.



FLOWER PLANTS

We make a great specialty of this department and claim to fill more orders for flower plants than any concern in the west. We now have thirty-two large greenhouses besides a large number of steam heated hotbeds and cold frames, thus giving us the largest amount of glass of any concern in Central Iowa. We employ experienced florists to look after this branch of our business and all their time and attention is devoted to growing flower plants and bulbs exclusively for the mail order trade, as for this purpose they require special culture in greenhouses kept at a low temperature so that they will be hardy, healthy and vigorous. The plants thus grown are much better prepared for shipment through the mails and for setting out in the open ground than those grown in the ordinary greenhouses which are kept at a high temperature. We are filling orders constantly from every state and also from various parts of Canada, Mexico, etc.

We Guarantee—That plants ordered from this list will reach purchasers in any part of the United States in good order if sent by mail or express.

Terms and Discounts.—At prices named we send plants postpaid except where noted. Orders must amount to at least 25c. We will furnish plants amounting to \$1.20 for \$1.00, \$2.50 for \$2.00, \$7.00 for \$5.00.

ASPARAGUS.—**Sprengerl.**—A splendid plant for hanging baskets or pots. It droops most naturally, sending out numerous feathery fronds forming an exquisitely handsome and striking picture. A well established plant is literally a mass of emerald green. Nice young plants each 10c; large size, each 25c.



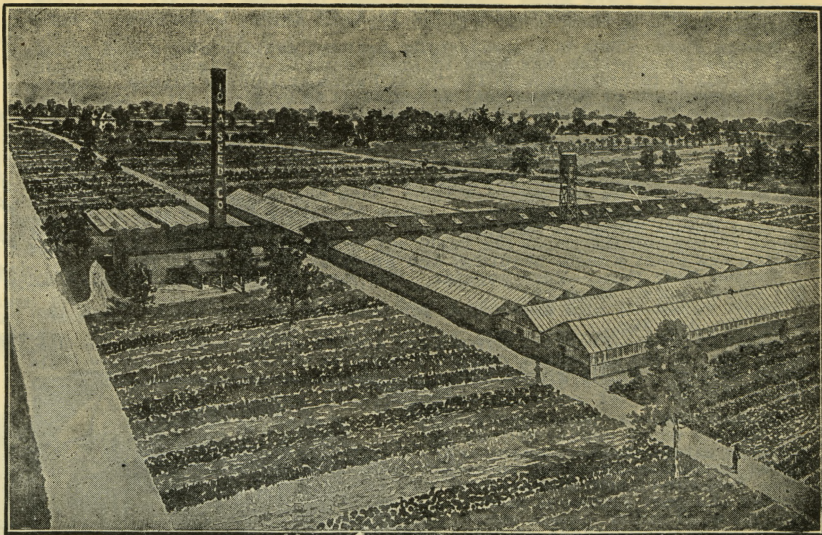
ASPARAGUS PLUMOSUS NANUS
only with clear, bright green. Large orange-colored, bell-shaped flowers. Each 15c.

BROWALLIA.—**Mammoth.**—The most beautiful of all Browallias. The plants grow only about a foot high, forming dense little bushes, which are covered with an abundance of the most delightful sky blue flowers. For beds, borders or pots there is hardly another plant with blue flowers that compares with it. Each 15c, doz. \$1.25.



ARACARIA.—**Excelsa.**—This beautiful plant resembles the pine somewhat in appearance, though much finer in texture, and is particularly adapted to table decoration. It is most unique in appearance. Its deep green feathery foliage arranged in whorls—rising one above the other at regular distance makes it a plant of rare value for house or conservatory decorations. Must be sent by express, too large to mail. Each \$1.00, \$2.00 and \$3.00.

BUTTERCUP.—**Double.**—A dainty little novelty. The flower is from one-half to three-fourths inches in diameter, perfectly double and of a peculiarly shining bright yellow color giving it an appearance as though varnished, and blossoms are produced in the greatest profusion. The ladies as well as children go into ecstasies over them. Each 10c, doz. \$1.00.



IOWA SEED COMPANY'S 32 GREENHOUSES

BEGONIA.—**Ver-non.**—Of unusual value for bedding, as it will stand the hot summer sun. Flowers are of pink, bluish and brilliant red color. Each 10c, doz. 90c.

Tuberous Rooted.—Giant flowered, tuberous rooted begonias have been brought to wonderful perfection. Flowers sometimes grow six inches in diameter, borne upright on stiff stems and of richest colors embracing every shade—white rose, pink, red, scarlet, crimson, maroon, lake, yellow and orange. Ea. 10c, doz. \$1.00.

Double Tuberous Rooted.—Very handsome. Ea. 15c, doz. \$1.50.

McBethii.—Foliage fine fern-like. Panicles of pure white flowers produced in the greatest profusion. It is the most persistent bloomer of the begonias. Each 10c, doz. \$1.00.

Profusion.—A new French variety of vigorous growth. Flowers are bright pink, produced evenly all over the plant. Each 15c.

Alba Picta.—Leaves of a glossy green color, thickly spotted with silvery white. Flowers white. Each 15c.

Rex.—Make a magnificent showing with their rich lustrous tints and tropical looking leaves. Each 20c. Large specimen plants 40c.

Louise Erdody.—This is one of the finest of the Rex class. Is sometimes called "Snail Begonia" on account of the peculiar formation of the leaves. The form is exceedingly odd and unique. The leaf has a metallic lustre, dark silvery in the center; shading into coppery rose toward the margin, which is broadly and evenly edged with the same hue, but darker and more brilliant. Very curious. Each 20c.

COLEUS.—Used in our large city parks for the ornamental beds, which look like varicolored rugs spread at short intervals on the smooth lawn. Assorted varieties each 10c, doz. 75c.

COBOEA Scandens.—A well known summer climber. Foliage green; large, purple, bell-shaped flowers. Each 15c.



TUBEROUS ROOTED BEGONIA
Each 10c, doz. \$1.00.

Alba Picta.—Leaves of a glossy green color, thickly spotted with silvery white. Flowers white. Each 15c.

Rex.—Make a magnificent showing with their rich lustrous tints and tropical looking leaves. Each 20c. Large specimen plants 40c.

Louise Erdody.—This is one of the finest of the Rex class. Is sometimes called "Snail Begonia" on account of the peculiar formation of the leaves. The form is exceedingly odd and unique. The leaf has a metallic lustre, dark silvery in the center; shading into coppery rose toward the margin, which is broadly and evenly edged with the same hue, but darker and more brilliant. Very curious. Each 20c.

COLEUS.—Used in our large city parks for the ornamental beds, which look like varicolored rugs spread at short intervals on the smooth lawn. Assorted varieties each 10c, doz. 75c.

COBOEA Scandens.—A well known summer climber. Foliage green; large, purple, bell-shaped flowers. Each 15c.



LOUISE ERDODY BEGONIA

FERNS.—We have many choice varieties of these delicate appearing, attractive plants at prices from 10c to \$1.00 each. Collection of eight varieties for \$1.00.

Boston Fern.—This is a wonderfully healthy, rapid growing and graceful house plant which has been in great demand everywhere, and many people buy it in preference to the finest Palms or Rubber Plants. Thrives in all rooms, gas or furnace heat do not seem to injure it. It is one of the most beautiful and useful of house plants. Each 15c; large plants 25c and 50c.

Ostrich Plume Fern.—A beautiful novelty which is a sport from the above but is indescribably more beautiful. Its feathery plume-like fronds more nearly resemble the graceful ostrich plume than anything else in nature to which we can compare them. One has to see a plant in growth to appreciate its beauty and value. Each 15c; large 25c, 50c and \$1.00.

Anna Foster Fern.—A beautiful new variety of the Boston Fern having broad fronds and the petals are finely cut or divided into tiny leaflets, thus giving the plant a most beautiful and graceful effect. Each 20c.

Maiden Hair Fern.—Very popular. The most graceful and useful of all out flower work. Each 15c.

Small Ferns.—A nice assortment for ferneries or fern pans. Each 10c; 6 for 50c, doz. 85c.

CARNATIONS.—Fragrant flowers are always sought after, and the rich, spicy odor of the carnation, combined with its various colors, leaves little to be desired. Easily grown and bloom freely.

Enchantress.—A most charming variety which cannot help attracting attention everywhere as it far surpasses all other varieties. The cut blooms sold readily during the past season at double the price of other choice sorts. Color an exquisite shade of delicate bluish pink, deepening in color toward the center, delicately perfumed, of faultless shape and immense size measuring four to five inches in diameter and the stems are unusually long. Each 15c, doz. \$1.25.

Prosperity.—Unquestionably the largest carnation of any color ever offered, of delightful clove fragrance. The color is a pure white, overlaid with shadings of soft pink. Each 15c.

McKinley.—A large, handsome flower of clear, beautiful shining pink, very showy and attractive, either for wearing or for vases. Bloom early and constantly and the flowers are of fine spicy fragrance. Each 15c.

Roosevelt.—One of the richest, deep velvety crimson flowers ever sent out. Each 15c.

Gold Standard, or Golden Beauty.—One of the best yellow carnations ever sent out. Flowers



ENCHANTRESS
CARNATION



JUPITER FUCHSIA



BOSTON FERN

extra large, three inches in diameter, and double to the center. Very fragrant. Each 15c.

Improved American Flag.—A very strong, robust growth, a profuse bloomer. The large showy flowers are pure white, striped with bright scarlet. Each 10c.

Mrs. Thomas W. Lawson.—The immense pink variety for which \$30,000.00 was paid by Mr. Lawson, the highest price ever paid for a plant novelty in this country. Flowers 3½ inches in diameter; color beautiful deep pink. Each 10c.

FUSCHIAS.—These, when in full bloom, are the most graceful of all cultivated plants; nothing surpasses the beauty of well grown specimens.

Jupiter.—A new giant flowered variety from France. The flowers are of really mammoth size with very rich violet purple corolla. Tube and sepals bright crimson. Plant is a strong, hardy, free grower. Each 15c.

White Phenomenal.—The grandest double white variety in existence and one which should be in every home. Each 15c.

Phenomenal.—Darker than Jupiter, with enormous flowers, a single one measuring 3 in. across; sepals bright scarlet, rich purple corolla, very double, flaked with red. Ea. 10c.

Monarch.—This is by far the largest of the single varieties. Its immense blooms are a very dark purple color. Each 10c.

Black Prince.—Tube and sepals bright carmine, sepals large and broad with pale green tips; large, open, pale pink corolla. Easily grown in tree form. We once had a plant 7 feet high, loaded with two thousand flowers at once. Each 10c.

CHRYSANTHEMUMS.—These are now, and deservedly, the most fashionable of all autumn flowers. All these varieties are excellent for pot culture, and the best of their class.

Cheltoni.—A remarkably fine deep yellow flower of elegant form. Each 15c.

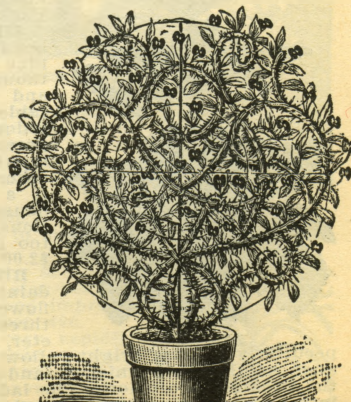
Wm. Duckham.—Very large, Japanese incurved of a most pleasing pink. Medium early. Each 10c.

October Sunshine.—A bright handsome, golden yellow variety, producing enormous sized ball-shaped flowers very early in the season. Each 20c.

Willow Brook.—Early; profuse bloomer, pure white. Each 10c.

Golden Wedding.—Of a rich golden yellow color; intensely dazzling; flowers 10 to 12 inches in diameter, petals broad and long, double to center. Ea. 10c.

CROWN OF THORNS.—(Euphorbia).—Very curious and remarkable window plant. Strong-growing and can be trained over any desired form, and when full of its large, bright scarlet flowers, which almost cover the deep, glossy green leaves, it is an object of rare and striking beauty. Grows wild in Judea, and it is claimed that it was from this plant that the crown of thorns was made which was worn by our Saviour and is therefore of special interest. Each 15c.



CROWN OF THORNS



AUREOLE GERANIUM

Carmen Sylva.—The grandest single pure white geranium in existence. It is of vigorous, healthy growth and blooms profusely. Each 15c.

Souvenir de Mirande.—Nicely formed, round florets, cream white, with distinct salmon rose border. Free flowering. Ea. 10c.

Mrs. E. G. Hill.—A most distinct and pleasing shade of salmon with light shading at the center. Each 10c, doz. \$1.00.

Alliance.—An exquisitely beautiful novelty, a cross between an Ivy and a Zonal Geranium. The flowers are large, semi-double, and produced in fine trusses. The color is an exquisite shade of pale lilac-pink, the upper petals feathered and blotched rich crimson maroon; distinct and pleasing. Each 25c, \$2.50 per doz.

IVY LEAVED GERANIUMS.—Eden Marchi.—Handsome of the ivy leaved sorts. Has enormous flowers of rose shaded violet. Each 15c.

Leopard.—A new orchid flowered variety. The flower is large, semi-double, and as rich and distinct as an orchid. One of the most distinct basket plants in cultivation. Each 20c.

Jean de Arc.—Very large and finest white in existence. Perfectly double, white as snow; flowers literally cover the plant when in full bloom. 10c.

SWEET SCENTED GERANIUMS.—We have a great many varieties, such as Rose, Nutmeg, Skeleton, Balm, Lemon, etc., at 10c each. \$1.00 per dozen.

FANCY LEAVED GERANIUMS.—Mrs. Pollock.—Magnificent. Green leaf disc, overlaid with beautiful bronze red, belted with bright crimson, outwardly margined with golden yellow. Ea. 15c.

Marshall McMahon.—Golden yellow, marked with a deep chocolate zone. Each 15c.

Mad Sallerol.—Fine for massing or bordering; leaves green, edged with white. Each 10c, dozen 85c.

Distinction.—Round green leaves, with clear black circle. 10c.

Mountain of Snow.—Finest of this class for ribbon lines or massing; center of leaf bright green, margin broadly marked silver white, scarlet flowers. Each 10c.

Grace Page.—This we consider one of the finest plant novelties of the season. It is identical with the old standard dark crimson S. A. Nutt Geranium except in foliage, which is beautifully variegated. Nothing in geraniums can surpass the beauty of this variety, with its large trusses of double crimson flowers against their variegated background. It is a sport from the S. A. Nutt, of vigorous growth and an exceedingly profuse bloomer. The leaves are of dark green, and each bears a border of pure snowy white. Each 20c, per dozen, \$2.00.

TREE HYDRANGEA.—You are doubtless acquainted with the Hydrangea Paniculata Grandiflora described in this catalogue which is one of the most popular and satisfactory hardy shrubs ever offered. This season we have grown a few hundred trained into tree form as we believe it will prove still more satisfactory in that shape. Nice trees 2½ to 3 feet high, by express at purchaser's expense, each 60c, doz. \$5.50.

ELEGANT TREE ROSES.—These Tree Roses are grafted on hardy rose stalks about 4 feet high, are tree shaped and objects of beauty. \$1.00 each, \$9.00 doz., by express, purchaser's expense.

DOUBLE GERANIUMS.—Geraniums are most easily grown and satisfactory of all flower plants and only the rose can vie with them in popularity.

Old Glory.—This grand novelty which we introduced, has immense trusses, sometimes six inches in diameter, of magnificent, large, single-double flowers which cover it so as to almost hide the foliage. The color is a clear, bright, rosy pink. Each 15c, doz. \$1.40.

Jean Viaud.—Very large semi-double blooms borne in large trusses, color bright rosy pink with distinct white blotch in center. Each 15c.

S. A. Nutt.—This finest of dark crimson geraniums has now taken the lead as a bedding variety, being used in the largest parks and public grounds of the country in preference to all others. Its dense, compact growth, profuse blooming qualities and sun proof constitution combined give it the prominence as a bedder it has attained. Each 10c, doz. 85c; by express, not prepaid, 50 for \$2.75; 100 for \$5.00. Large plants from four inch pots by express, per doz. \$1.50.

J. Ricard.—Enormous sized trusses; flowers purplish crimson, center distinctly marked white. Each 10c.

Double New Life.—A great novelty. The outer petals are large and of a brilliant red. In the center of these appear another semi-double floret, pure white in color, effecting a very charming contrast, difficult to realize unless seen. Each 15c, doz. \$1.50.

Blue Beauty.—Of a most beautiful violet or purplish crimson with a blue sheen over the surface. The blue tint shows better after each flower is fully out. Each 15c.

Golden Dawn.—The nearest yellow of any geranium—rich orange scarlet. Each 15c.

SINGLE GERANIUMS.—Hall Caine.—Fine large trusses produced in great profusion, individual florets immense, 2½ to 3 inches in diameter; color bright cherry red. Each 15c.

Aureole.—(Mad. Bruanti).—A fancy flowered sort of remarkable colors. Plant is loaded with blooms and each floret is large, center being white, beautifully veined with carmine lake, radiating into a handsome aureole, each petal being bordered with bright solferino. Fine pot plant and constant bloomer. Each 15c.

Chameleon.—When first introduced sold at \$5.00 per plant. It is what might be called a "sport" or "freak" of nature, as it is quite erratic in its growth as shown by our illustration. Some flowers are red, some white, some pinkish salmon; and some clearly striped with the three colors. Frequently one plant will have on it flowers of all three colors at the same time; others will bloom for months showing only one of these colors, then changing to some other hue. Bears many trusses of large single flowers. Its name was suggested by its peculiar way of changing color. Each 15c, doz. \$1.50.

Wonder.—One of the finest French novelties and a wonderful bloomer. Flowers are intense scarlet. Each 10c.



IVY GERANIUM | EDEN MARCHI (One half natural size)

WM. LANGGUTH GERANIUM.—Is a beautiful variety. The plant is of short, stocky growth, and the beautiful deep green leaves are bordered with a broad, pure snow white band, so that it is handsome even when not in bloom. Clusters are extra large and a bright red color, showing magnificently against the white foliage. Each 20c.

UMBRELLA PALM.—(Cyperus).—An ornamental plant which throws up slender, round stems about two feet high, surmounted at the top by a whorl of flat, ribbon-like leaves, diverging horizontally, thus giving the plant a very curious and fantastical appearance. It is a splendid decorative plant, being as ornamental as a palm or fern, and above all it is as easily grown as the commonest weed, and will thrive in the shade as well as the sun. Ea. 10c, larger 25c and 50c ea.

FAIRY WATER LILY.—This resembles a miniature water lily bearing white flowers the year round. Fine for aquariums. 15c.

WHITE POND LILY.—*Nymphaea Odorata*.—The praises of our fragrant water lily can never be too highly sung. It has lovely, pure white flowers. Strong roots 30c each, doz. \$3.00.

LANTANA.—One of the most satisfactory plants grown. It is the flower for everybody, both for outdoor

bedding and blooming all winter in the house. It somewhat resembles the *Verbena*, borne on a woody, bush-shaped plant. The flowers embrace all shades of orange, sulphur, lilac, red, pink, white, etc., changing from one distinct color to another as they increase in age and development. Six choice varieties. Each 10c, doz. \$1.00.

Weeping.—A beautiful trailing variety, very desirable for planting in hanging baskets, vases, pots or open ground. Bears an immense profusion of lovely clear pink flowers from early summer until late in the fall. Everyone is delighted with it. Each 10c.

HELIOTROPE.—These are universal favorites on account of their delightful fragrance. Flowers equally well as bedding plants in summer, or as pot plants in the house during winter. Several varieties. Each 15c, dozen \$1.25.

FARFUGIUM.—*Grande*.—A beautiful ornamental foliage plant, either for planting in open border, or in shaded position; leaves 4 to 8 inches in diameter; are of a thick, leathery texture, dark green color, with bright yellow spots. Each 15c.

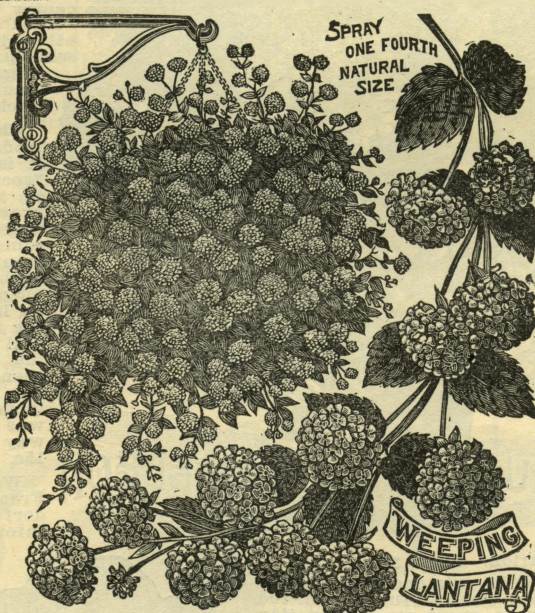


WM. LANGGUTH GERANIUM

CYCLAMEN.—*Giant Flowered.*—One of the most beautiful and decorative of all pot plants, for winter and spring blooming. Foliage is broad, massive and graceful, of a dark, olive green, beautifully variegated with silver and rose. The immense, fairy-like flowers are carried on long stems and produced in profusion for several months, and are quite fragrant. Assorted colors. Each 15c, extra large size 25c.

CENTAUREA.—*Gymnocarpa.*—(Dusty Miller).—A dwarf, silvery foliated plant used largely for ribbon beds or borders. Ea. 10c, doz. 75c.

FEVERFEW.—*Ideal.*—Originated on our place and is far superior to the older sorts. It is a vigorous strong growing plant, bearing large clusters of unusually large flowers, which are pure snowy white without any yellow shading or center. An excellent plant for bed-



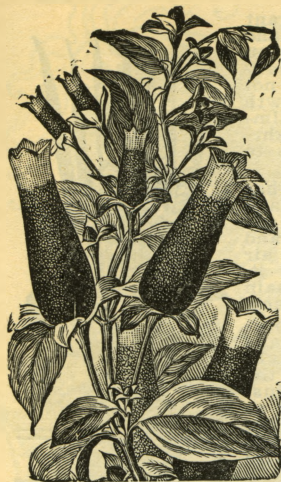
ding, producing a succession of bloom, and very desirable for cemeteries. Each 10c, doz. 75c.

PONDEROSA LEMON.—Nothing has ever caused half the commotion that this wonderful Lemon has. It is a true ever-bearing variety. On a plant six feet high no less than eighty-nine of these ponderous lemons were growing at one time. It was a beautiful sight. The tree was blooming and at the same time had fruit in all stages of development, from the size of a pea to the ripe fruit, showing it to be a true ever-bearer. Blossoms waxy white and as fragrant as orange blossoms. Fruit has been taken from the tree weighing over four pounds. It is the juiciest of all lemons, makes delicious lemonade, and for culinary purposes cannot be excelled. Strong plants 15c, postpaid. Large two-year-old plants 50c and 75c each by express.

LEMON VERBENA.—A universal favorite, invaluable for its fragrant leaves. They will retain their fragrance for years when dried. As a plant for the garden or for pots it is equally valuable, its fine sprays of foliage and delicious fragrance making it desirable for bouquets, etc. In good rich soil each plant will cover a space of three to four feet in diameter. 10c.



PONDEROSA LEMON



MANETTA BICOLOR

MANETTA.—Bicolor.—One of the handsomest little vines in existence. It is easily and quickly grown and blooms continuously. It is well adapted for hanging basket, pot culture, vases or bedding. The flower is of the size and shape shown in our illustration, and of brilliant scarlet, tipped with clear golden yellow, making it most wonderfully attractive. Each 10c.

MOON FLOWER.—A very handsome climber, growing to a height of twenty-five to forty feet, and covered nightly and on dull days with its white, moon-like flowers five to six inches in diameter. Each 15c, doz. \$1.25.

DOUBLE NASTURTIUM.—Did you ever see one? Few people have, but we have a fine lot of them this year and are offering them at a low price. It is a most charming novelty which is really difficult to describe. The flowers are large and fully double, which gives them a very different appearance from any others. Some flowers are of a bright yellow color and some a rich, dark orange crimson, with shading of deep mahogany red. Plant is of climbing habit, and fine for trellises, window boxes, vases, etc. Each 15c, doz. \$1.35.

PALMS.—The most elegant and highly decorative of all plants and the low prices at which they are now offered place them within the reach of all. The following are the most desirable for house culture:

Latania Borbonica.—or Fan Palm.—One of the most popular varieties grown, prized especially for its beautiful, large fan shaped leaves of deep glossy green. Each 25c; large plants by express, 50c to \$5.00.



LATANIA BORBONICA PALM

PETUNIA. — Double.—One of the grandest, most beautiful plants for massing, mixed borders and vases. The brilliancy and variety of its colors, combined with the duration of its blooming period, render it invaluable for garden decoration. Our stock is unsurpassed and includes the best blotched and fringed sorts. Mixed varieties. Each 10c, doz. 90c.

Crimson Queen.—One of the best crimson petunias. Each 10c.

Fantasia.—A handsome double white and purple petunia. Striking variegation. Each 15c.

Fritz.—This is a decided novelty. The groundwork of the flower is a deep purple, which is beautifully marked and penciled with cream, white and pink, the whole forming a most gorgeous combination. Ea. 15c.

Helen Gould.—Beautifully fringed pink variety. One of the handsomest sorts in existence. Each 10c.

Sea Foam.—A new double white fringed variety; unsurpassed among fringed sorts for purity of color, size, form and vigor of growth. Ea. 15c.

Snow Queen.—White varieties are always scarce; this is an extra choice new double white petunia which for profuse flowering qualities is unsurpassed; for keeping has no equal. Each 15c.

SWEET WILLIAM.—Well known, free blooming, hardy perennial plants which produce masses of lovely, brilliant, sweet-scented flowers through a long period, making a splendid effect in beds. Color white, pink, crimson, carmine, purple, etc., with eyes and rich markings. Each 10c, doz. 85c.



BABY PRIMROSE



FANTASIA DOUBLE PETUNIA

POPPY. — Ice-land.—Fern-like foliage and bear an immense number of elegant flowers. Each 15c, dozen \$1.25.

STREPTOSOLON.—A charming plant closely resembling the Browalia. It is desirable for the flower bed and also for winter blooming in the house. Making nice bushy little plants 8 to 10 inches high, and blooms all the time. Large flowers, lovely deep violet blue. Each 15c, dozen \$1.25.

DOUBLE DAISY.—Very double; pure white and pink flowers. Blooms freely and makes a fine plant for growing in beds alone or with pansies. Each 10c, doz. 75c.

FORGET-ME-NOT.—Everyone loves the charming little Forget-Me-Not, and it seems strange that it is not more often seen in our gardens. They are easily grown and will bloom freely and continue to thrive year after year. Each 10c, doz. 75c.

Kentia.—This is considered one of the hardest and best palms in cultivation. A rapid grower. Each 35c; large plants by express, \$1.00 to \$5.00 each.

Chamaecyparis.—Handsome fan-leaf palm of rapid easy culture. Very valuable and useful for out doors during the summer. Each 20c.

Cycas Revoluta.—Sago Palm.—Magnificent plants of noble and majestic appearance. Their heavy, glossy, deep green fronds resist a like the gas, dust or cold. Strong young plants are 50c each, postpaid; large specimen plants at \$1.00, \$2.50, \$5.00 and \$10.00 each, according to size, by express.

VARIEGATED STEVIA.—One of the finest ornamental foliage plants for bordering beds. It is a sturdy, rapid growing, compact plant, easily trimmed to any form desired. Leaves are long and narrow, set closely on the plant, and of beautiful bright green, clearly striped with broad bands of pure white. Each 15c, doz. \$1.50; per 100 \$8.00.

PRIMROSE.—The Baby.—(Primula Forbesii).—It is a wonderfully free blooming plant, commencing to flower as soon as "born." It forms a dense rosette of somewhat fleshy leaves from which spring the flowering stems, twelve, fifteen and even twenty inches tall, supporting three tiers of whorls of dainty flowers of a delicate rosy lilac, with eye of pale gold. The flowers are not more than a half inch in diameter, but they are produced in great abundance from September until June. Each 10c.

Mexican.—Is a perpetual bloomer, in flower all times of the year, a good specimen showing always from ten to thirty large saucer shaped blossoms two to three inches across, of several beautiful colors. Each blossom keeps perfect many days before fading and when it droops others are out to take its place, and this succession of beauty is continued. Each 10c.

Obconica.—A lovely perpetual blooming primrose. The flowers are of rose lilac shading to white. Each 10c.

Chinese.—A most popular flower for winter blooming. 15c.



MEXICAN PRIMROSE

NIGHT BLOOMING JASMINE.—World famous deliciously fragrant Night Blooming Jasmine (or Jessamine) of which poets have sung and yet how few comparatively, in our own country have ever seen it. It is of the easiest culture and still somewhat difficult for the ordinary florist to propagate and perhaps this is the reason why they are not better known. It is a plant of strong shrubby growth with handsome glossy green foliage and bears an immense number of small star-shaped flowers. The delightful fragrance is dispensed only at night. It begins to bloom when very small. Each 15c, 3 for 40c.

RUBBER TREE.—During the past few years there has sprung up an immense demand for rubber plants and they are highly valued everywhere for their tropical appearance. Leaves are very large, thick and leathery and of a beautiful shining green color. It endures the dry air of living rooms remarkably well. Everybody likes it. They are difficult to propagate and will always remain high in price. Each 50c; larger size \$1.00 and \$1.50 each.

SANSEVERIA.—*Zelanica.*—There is scarcely a decorative plant listed that is more striking in appearance, and certainly none other that will stand as much downright neglect. It will grow in a dark, cool room or stand on the mantel in a heated sitting room. Will stand gas or dust and go months without water, yet remains as thrifty as ever. Singularly beautiful, as well as easily grown. Erect, rigid, sword-like leaves which are thick and fleshy, dark green color, beautifully striped crosswise with white. Each 15c; large specimen plants 40c.

SWAINSONIA.—*White.*—A beautiful new climbing plant. The habit of growth is extremely graceful, and the vine trained up at the side of a window, or on a trellis presents a lovely sight of light green, feathery foliage,

and a splendid profusion of pure white sprays of flowers resembling Sweet Peas in form. Easily grown and under favorable conditions is almost a perpetual bloomer. Each 10c.

Pink.—A beautiful new sort, quite similar to above except that flowers are a clear pink color. Each 10c.

HYDRANGEA.—*Otawaka.*—A Japanese variety used extensively for Easter decorations. Produces enormous trusses of intense pink flowers. Makes excellent specimen plants for the porch or lawn. Blooms entire season. Ea. 15c.

Thomas Hogg.—The immense trusses of flowers are at first slightly tinged with green, changing to the purest white. Each 15c.

ARUNDO DONAX.—An ornamental plant having wide, but grass-like foliage handsomely variegated white and green. Each 20c, dozen \$1.75.



RUBBER TREE

SALVIA.—*Mrs. Chas. N. Page.*—One of the finest of all bedding plants. Has long spikes of dazzling scarlet flowers, remaining in bloom until cut down by frost. Each 15c, per doz. \$1.50. Large size from four inch pots, each 25c, dozen \$2.25.

Silver Spot.—Foliage green, spotted clear white; flowers bright scarlet. An attractive bedding plant. Each 15c, per doz. \$1.25.

PANSIES.—Pansy plants are quite a specialty with us and we sell immense numbers of them every year. Our plants are grown from the very best quality of seed and are strong and vigorous and have beautiful large velvety flowers of all shades and colors known in pansies. Extra large, strong plants, 50c per dozen; four dozen for \$1.50 postpaid. Smaller size 25c per doz., five dozen for \$1.00.

PANSY GERANIUM.—This beautiful flower belongs to the Pelargonium class. The flowers are of medium size and have white throat. Each petal is shaded toward the center with a rich lavender pink and a dark maroon blotch in the center. Very handsome; will attract attention. This new and beautiful geranium is of easiest growth, dwarf in habit and literally covered with flowers, and as it requires little or no attention it is invaluable as a window plant. Colors and markings of flowers are most extraordinary. Each 25c.

VINCA MAJOR.—*Elegantissima.*—One of the handsomest vines in existence for growing in window boxes, hanging baskets, trailing from pots, rockeries, etc. The long, trailing stems of glossy green leaves are broadly margined and variegated with white and they are always bright and pretty. Plants are of the easiest culture, will stand neglect and mistreatment and grow very rapidly. Does well either in a sunny place or in the shade. Blue flowers. Each 10c, doz. \$1.00; large size 25c.

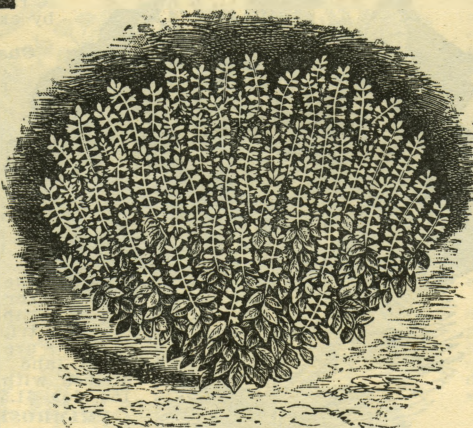
Harrison.—Similar to the above but with darker vegetation. 10c, doz. \$1.
SEA PINK.—An attractive little plant, also known as Armeria or Thrift. It is a hardy perennial having a rosette of narrow grass-like leaves and bearing handsome compact heads of pink flowers; useful for bedding or borders or rockeries. Each 10c, dozen \$1.00.

MAMMOTH VERBENAS.—Everybody likes Verbenas, as no one can help enjoying the sight of a nice bed carpeted with dark green leaves and brilliant blossoms. We have a large stock of the large flowered varieties which bloom freely and are of the finest colors. We can furnish separate colors such as red, pink, white, blue, purple, maroon, striped, etc., or nicely assorted, just as you prefer, at 10c each, 75c per dozen.

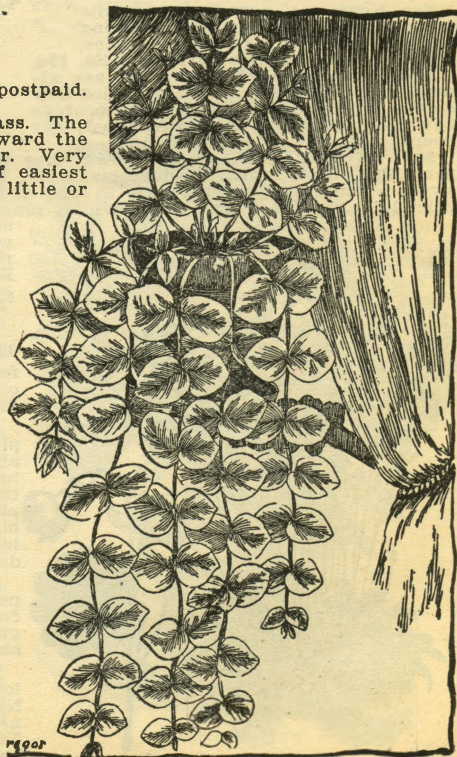
ARALIA SPINOSA.—A wonderfully showy, tree-like shrub growing on good soil to a height of 12 or 15 feet, but usually attaining height of only 8 to 10 feet. It is of very tropical appearance and has large leaves 18 to 30 in. wide, divided into smaller leaflets. Fine plants 40c, postpaid. Larger sizes by express, 2 to 3 feet \$1.00; 4 to 6 ft. \$2.00; 6 to 10 ft. \$3.00.



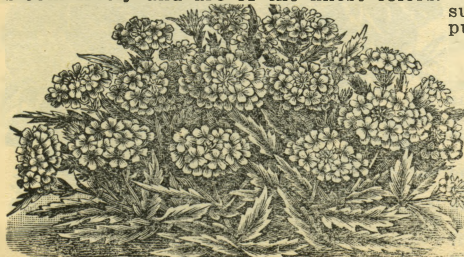
SANSEVERIA



MRS. C. N. PAGE SALVIA



ELEGANTISSIMA VINCA



MAMMOTH VERBENA

BEAUTIFUL ROSES



MRS. ROBT. PEARY
ROSE

Perle des Jardins.—Fine straw Color; very large and perfect. Blooms freely. Each 10c; two-year-old plants 25c.

Champion of the World.—The champion bloomer. It is claimed that one plant will produce more flowers during the year than ten plants of any Tea Rose. Blossoms are perfectly double. Color rosy pink. Each 15c; two-year-old plants 30c.

Crimson Rambler.—The most popular rose in existence as it is always satisfactory. Many instances are reported of 3,000 to as high as 19,721 flowers by actual count on one bush. It is exceedingly hardy. Flowers are produced in large trusses of pyramidal form and of the brightest crimson color. Each 10c, strong dormant plants 25c.

Baby Rambler.—Decidedly the best rose novelty and the very best bedding rose in existence. The bush is vigorous, absolutely hardy, about 27 inches in height, and on our place every plant was in bloom every day of the summer and fall. Sometimes as high as 120 flowers have been counted on a single panicle. Color bright glowing scarlet. It was never offered in America until a year ago last spring and the plants went like wildfire. Every flower lover just must have it. Nice well grown plants each 20c, per doz. \$1.75. Large two-year-old plants each 30c.

White Baby Rambler.—Novelty of 1908. We believe that there was never a rose offered which had a greater run than the Baby Rambler which was introduced three years ago but now we have this fine companion for it, which is still more desirable. It is an even more constant bloomer than the Crimson Baby Rambler, being covered with flowers all the time. The flowers are small, pure white and quite double. Each 25c.

American Beauty.—One of the best and most valuable roses, both for garden and house culture. Color rosy crimson, exquisitely shaded and very handsome. Extra large, full flowers and fine buds, a good bloomer. Each 15c, dormant 35c.

Mrs. John Laing.—This rose for outdoor planting is undoubtedly the finest. Color a beautiful, soft pink, with most delicious fragrance; very double and of large size. A constant bloomer. Each 15c, dormant 30c.

Crested Moss.—Acknowledged queen of all roses; moss-covered stems and buds show off delicate loveliness of blossom; hardy. Deep pink colored buds surrounded with a mossy fringe; fine. Each 20c; dormant 35c.

We consider these not only the most popular, but also the most satisfactory of all flowers, and therefore we make roses a leading specialty and are now devoting more space in our greenhouses and more land in our fields to roses than ever before. Our plants are grown on their own roots and are strong, healthy and vigorous. The two-year-old plants offered are out-door grown, dormant plants of most varieties.

Souvenir de Wooton.—One of the most beautiful and satisfactory roses grown. Color a rich shade of velvety crimson, deliciously fragrant, a constant and most prolific bloomer and flowers frequently six inches across. Each 10c. Two-year-old plants 25c.

Chatenay.—Flowers are of elegant shape with slightly recurved petals. Color creamy rose shaded with rosy carmine. An extra choice free blooming garden variety. Each 15c. Two-year-old plants 35c.

Golden Bedder.—The finest golden yellow Tea Rose. Each 20c. Two-year-old plants 35c.

Liberty.—Color indescribably rich, glowing, dark crimson scarlet, of immense size, very fragrant and double. Each 20c. Two-year-old plants 40c.

Frances E. Willard.—Undoubtedly the best pure white ever-blooming rose ever introduced. Buds and flowers are of large size, perfect form, pure snow-white color, delightfully fragrant and blooms freely. Each 15c. Two-year-old plants 35c.

Mrs. Robert Peary.—The most remarkable new rose of recent introduction. The flowers are extra large, full, deep and double. The buds are long and pointed. Color pure ivory white, of delicious fragrance. Grows 10 to 15 feet in a single season. Each 20c. Strong two-year-old dormant plants ea. 50c.

Manda's Triumph.—A beautiful white climbing rose. It is a very rapid, sturdy grower, and bears a profusion of double, pure white, beautiful imbricated flowers; elegant for cemetery. Each 10c, dormant 25c.

Bessie Brown.—Blooms are very large in size, full double and of perfect shape; color creamy white flushed and tinged with pink. Blooms freely. Each 20c. Two-year-old plants 40c.

Helen Gould.—Buds are long and pointed; the flowers are fully and perfectly double; color rich rosy crimson, bright and glowing; a good winter bloomer. Each 15c. Two-year-old plants 30c.

Rainbow.—An elegant striped Tea Rose; strong, healthy growth and exceedingly free flowering habit. Each 15c. Two-year-old plants 35c.

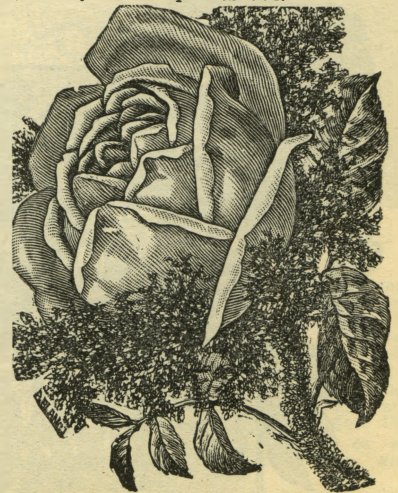
The Queen.—Pure snow white, makes good, fine-formed buds, is quite full, double, showing but little center, and is very fragrant; a constant bloomer. Each 15c; two-year-old plants 30c.



MRS. JOHN LAING

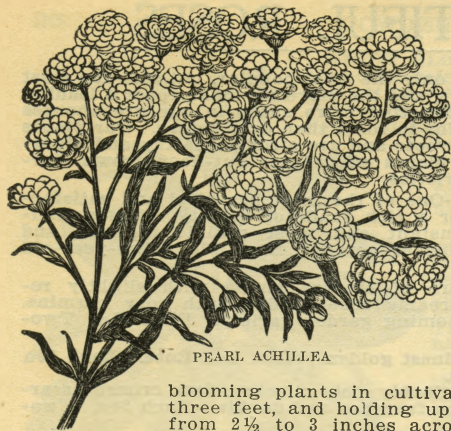


BABY RAMBLER ROSE



CRESTED MOSS ROSE

HARDY PERENNIAL PLANTS



PEARL ACHILLEA

blooming plants in cultivation, growing to a height of three feet, and holding up on stiff stems double flowers from $2\frac{1}{2}$ to 3 inches across, of pure white, and heavy waxy texture. Each 15c.

Queen Charlotte.—Similar to above but earlier and of beautiful shell pink color. An early flowering pink Anemone. Each 15c.

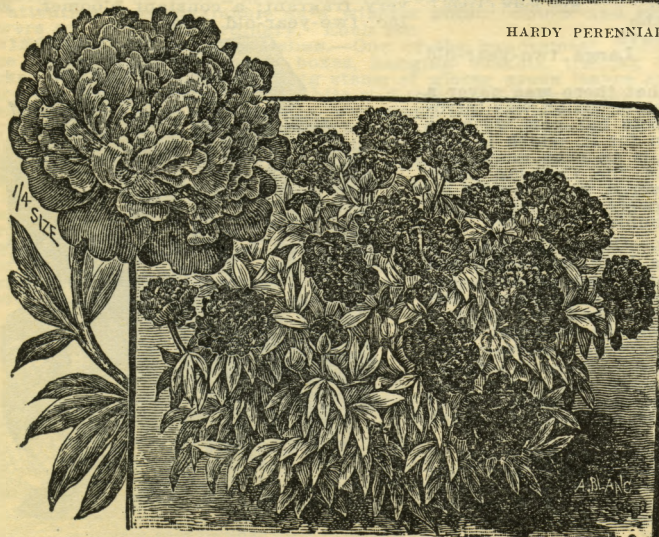
BABY'S BREATH.—Possesses a grace not found in any other perennial, and when in bloom it forms a symmetrical mass two to three feet high, of minute white flowers, giving it a beautiful gauze-like appearance. Ea. 10c, doz. \$1.

RUDBECKIA, or Golden Glow.—A glorious hardy plant that should find a place in every garden. It is of fine habit; vigorous growth, with early, continuous and immense blooming qualities. It attains a height of six to eight feet, and a small plant set out in the spring will produce hundreds of blossoms each as large as a good sized chrysanthemum. Price 10c, dozen \$1.00.

PHLOX, — Sublata. — (Moss Pink).—One of the finest of low, turf-growing plants, fine for carpeting under trees, around rock-work, edging beds, etc. Bright pink, light blue and white. Three varieties. Each 10c, dozen 75c.

HARDY PHLOX.—We know of nothing in hardy perennials more showy or effective than a fine collection of hardy phloxes, and the new and improved varieties that have been introduced recently will add very much to their popularity. Flowers are very large and have exceeding brilliant shades of color. They bloom from June until very late fall. Many choice varieties. Each 10c, dozen 85c.

IRIS, — Japanese.—These magnificent Iris are among the most beautiful of our summer flowering plants. Of immense size and beautiful colors. Double and single mixed. Each 15c, doz. \$1.25.



GRANDIFLORA RUBRA PEONY

It is really wonderful the immense demand which there has been for these hardy plants during the past few years, our trade in this line multiplying fourfold every year. Our customers are learning that they require less care and are more satisfactory with ordinary culture than most other classes of plants. When once set out they bloom year after year, the flowers really becoming better as plants grow older.

ACHILLEA. — The Pearl. — Beyond question the finest of all plants for cemetery planting. The flowers are good sized, forming beautiful plant eighteen inches high, completely covered with pure white flowers from July until frost. We cannot too highly recommend this for general planting. Cut shows one of the heads of bloom which cover the plant. Ea. 10c, doz. 75c.

ANEMONE. — Whirlwind. — One of the finest hardy, full-



HARDY PERENNIAL PHLOX

large, from $2\frac{1}{2}$ to $3\frac{1}{2}$ inches in diameter. Brilliant scarlet, crimson, orange and vermillion. Each 15c, dozen \$1.50.

DAY LILY. — White. — (Funkia).—A very beautiful plant for partly shady places. Large, round, heart-shaped leaves, clusters of fragrant lily-shaped white flowers. Each 15c, dozen \$1.50.

DICENTRA. — Spectabilis.—The old Bleeding Heart, as lovely as ever. In early spring it bears its long chain of pendulous bloom of exquisite beauty. Each 15c, dozen \$1.40.

VIOLETS.—Of all perfumes that of violets is no doubt the most delicate and pleasant and easily places these modest little blue flowers among our greatest favorites. Violets grow and bloom freely if given a cool situation, but will not succeed in a warm place, and should be well covered to insure protection during the winter. Several varieties. Each 10c, dozen \$1.00.

PAEONIES.—Everyone knows the old-fashioned "Piny" of our grandmother's garden, but the specialists of America, Europe, and particularly those of Japan, have been at work so that now there are more than 1,000 named varieties. Mixed varieties and colors. Each 20c, doz. \$2.00.

Grandiflora Rubra.—Extra large perfect balls of pure blood red, magnificent flowers. Probably the largest red variety in existence, often 8 or 9 inches across. Each 50c, dozen \$4.75.



RUDBECKIA OR GOLDEN GLOW

Gorman.—The true "Fleur-de-Lis," the national flower of France. Perfectly hardy, thrive anywhere, grow and bloom luxuriantly. We can furnish all the best standard varieties. Ea. 10c, dozen 85c.

Pumula.—A dwarf, early blooming variety, quite desirable for borders and edgings. Mixed colors. Each 5c, doz. 50c.

CRIMSON EYE HIBISCUS.—Flowers are immense in size, often measuring twenty inches in circumference. The color is of the purest white, with a large spot of deep velvety crimson in the center. Each 15c, doz. \$1.25.

GRASS PINKS.—The hardy and pretty clove-scented flowers which our grandmothers loved. The fragrance is quickly noticed by anyone passing the yard where they are growing, before seeing the flowers. Flowers are double, semi-double and single, and range from pure white to dark pink and red. Each 10c, dozen \$1.00.

PARDANTHUS. — (Blackberry Lily).—Quite curious and handsome. Flowers orange colored spotted with brown, about two inches in diameter. Each 10c, dozen 85c.

GAILARDIA. — Grandiflora. — These are among the showiest and most effective of hardy perennial plants. The flowers are large, from $2\frac{1}{2}$ to $3\frac{1}{2}$ inches in diameter. Brilliant scarlet, crimson, orange and vermillion. Each 15c, dozen \$1.50.

DAY LILY. — White. — (Funkia).—A very beautiful plant for partly shady places. Large, round, heart-shaped leaves, clusters of fragrant lily-shaped white flowers. Each 15c, dozen \$1.50.

DICENTRA. — Spectabilis.—The old Bleeding Heart, as lovely as ever. In early spring it bears its long chain of pendulous bloom of exquisite beauty. Each 15c, dozen \$1.40.

VIOLETS.—Of all perfumes that of violets is no doubt the most delicate and pleasant and easily places these modest little blue flowers among our greatest favorites. Violets grow and bloom freely if given a cool situation, but will not succeed in a warm place, and should be well covered to insure protection during the winter. Several varieties. Each 10c, dozen \$1.00.

PAEONIES.—Everyone knows the old-fashioned "Piny" of our grandmother's garden, but the specialists of America, Europe, and particularly those of Japan, have been at work so that now there are more than 1,000 named varieties. Mixed varieties and colors. Each 20c, doz. \$2.00.

Grandiflora Rubra.—Extra large perfect balls of pure blood red, magnificent flowers. Probably the largest red variety in existence, often 8 or 9 inches across. Each 50c, dozen \$4.75.

HARDY SHRUBS

There is nothing which so quickly, and for so little cost, adds so much to the beauty, cheerfulness and homelike appearance of a place as an assortment of hardy shrubs. They are permanent improvements which increase in size, value and beauty year after year.

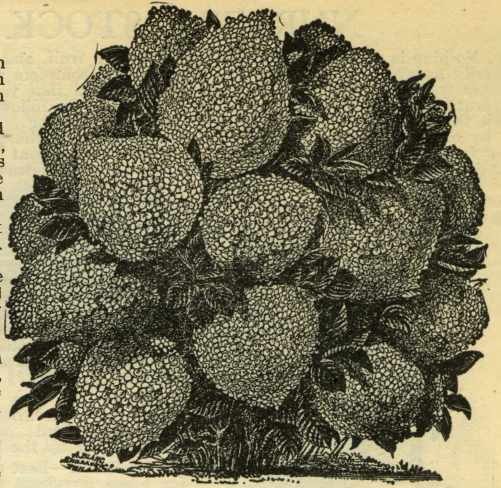
WEIGELA.—Rosea.—No shrub in our large collection has attracted more attention. It is of robust but graceful growth, 5 to 7 feet high, and produces immense numbers of superb, large trumpet-shaped flowers in June, July, and also some in the fall. Plants frequently have more flowers than leaves. Flowers shade from a dark pink to nearly white in the same cluster. Each 15c, dozen \$1.50. Large 25c. Dozen \$2.50.

Eva Rathka.—A splendid new variety and perhaps the handsomest yet produced. Large purplish red flowers with rich creamy white markings. Each 20c, large 35c.

HYDRANGEA.—Paniculata Grandiflora.—The grandest as well as the most popular of all shrubs, and hundreds of thousands of them are sold every year and the demand is constantly increasing. Unsurpassed for the lawn, a hedge, or for cemetery planting. It readily attains a height of 5 to 7 feet; hardy in all localities, needs no protection in winter, blooms the first and every season in July and August and continues in bloom for two or three months; the flowers are massive, cone-shaped, sometimes ten inches in length, and changing from the original pure white to pink, and finally to a beautiful coppery red. Each 15c, dozen \$1.25. Large dormant plants 30c, doz. \$2.50; large tree form plants 75c.

ARALIA SPINOSA.—A curious spiny-trunked shrub-like tree, also sometimes called Hercules' Club or Devil's Walking Stick. Valuable for producing tropical effects. Very showy. Each 40c. Extra large size by express \$1.00.

DEUTZIA.—Pride of Rochester.—By far the handsomest variety of Deutzias. It is a very desirable shrub of strong, hardy growth, with



HYDRANGEA PANICULATA



WEIGELA RO EA

HARDY VINES

In making a home, plan for future beauty, comfort and happiness by planting a variety of hardy clematis, ornamental vines, and roses will constantly grow in beauty and size. Such permanent improvements add greatly to the value of any property, and the value grows from year to year, that instead of an expense they should be considered a paying investment.

CLEMATIS.—Jackmanii.—Most magnificent and showy vine in existence; of strong, healthy growth, perfectly hardy and sure to succeed anywhere. Flowers four to six inches in diameter, of a rich, deep, velvety purple, distinctly veined. Strong plants, each 50c; extra large, three-year-old roots 75c.

Henryii.—This may be briefly described as a white flowered Jackmanii. It is the finest of all white sorts, the same size as Jackmanii. Each 50c.

Mad. Edouard Andre.—An entirely distinct and beautiful new variety, being the nearest approach to bright red ever sent out. Has the same vigorous growth, hardness and freedom of bloom as the above, while the color is a pleasing carmine red. Each 50c.

Paniculata.—This small-flowered variety of Clematis is one of our most beautiful, hardy, fall-blooming vines. The flowers, which are pure snow white, are produced in immense clusters, fairly covering the plant with a mass of fleecy white. They have a delicious fragrance. The plant is of extreme rapidity of growth. Each 15c; large, extra strong plants, 30c.

BIGNONIA.—Radicans.—An old-fashioned hardy climber. It has clusters of large trumpet-shaped crimson orange flowers. It grows in almost any soil and under trying conditions; hardy. Each 10c, large plants 25c.

AMPELOPSIS.—Vitel.—(Boston Ivy).—This is one of the finest climbers we have for covering walls, as it clings firmly to the smoothest surface, giving it the appearance of being shingled with green leaves. For covering dead trees, gate posts, boundary walls, etc., it has no equal. In the summer the foliage is a rich shade of green, but in the fall it assumes the most gorgeous tints of crimson, scarlet and orange so dazzling as to be seen at a great distance. Each 10c, large plants 25c.

GLECOMA.—(Variegated Ground Ivy).—The foliage is a bright green, marked with pure white and has a refreshing fragrance similar to mint. Graceful and beautiful for hanging baskets. Entirely hardy when planted out, and makes an ornamental, dense mat on ground. 10c, doz. 75c.

HONEYSUCKLE.—Red Coral.—A shrubby climber and one of the most satisfactory of all plants. Bright red, fragrant, trumpet-shaped flowers almost continuously. Each 15c, doz. \$1.50. Large plants 25c.

WISTARIA.—Blue Chinese.—A very rapid grower, and one of the most beautiful; when covered with bloom it is magnificent. Each 15c; large 35c.



CLEMATIS JACKMANII

CLEMATIS HENRYII

CLEMATIS PANICULATA



WISTARIA

NURSERY STOCK

Nothing is more beautiful and healthful than fruit, and nothing more easily grown. No farm, garden or city lot is complete without a few fruit trees and small fruit plants. It is essential that you secure good plants and trees in order to grow good fruit. The following prices are all for first-class stock, carefully packed for shipping. Where quoted "by express" the purchaser is to pay transportation charges by express or freight. Orders for nursery stock must amount to at least 50 cents. Ask for special prices on large orders, sending list of wants.

RASPBERRIES—New Cardinal.—Of extreme hardiness, productiveness and richness of flavor; large purple berries. Each 20c, dozen \$1.25, prepaid. By express per 100, \$2.75.

Cumberland.—Of very large size, good quality, firm and handsome! Plants vigorous and hardy. Each 20c, doz. \$1.25 prepaid; by express per 100 \$2.50.

Gregg.—Hardy and excellent. Has been the leading blackcap variety for many years. Each 15c, doz. 75c prepaid. By express, per 100, \$2.00.

Haymaker.—Purple red color cap; never crumbles and stands up well in shipping. Each 25c, dozen \$2.00.

STRAWBERRIES.—We can furnish any of the standard varieties, but specially recommend the following: Ask for price by the thousand.

New Home.—Best of all varieties for home growing. Of large size, handsome shape, bright red color. Per doz. 50c, per 100, \$2.00 postpaid. By express per 100 \$1.75.

Climax.—Large size, very productive and of good quality. Per doz. 40c, per hundred \$1.75. By express per 100 \$1.50.

Sample.—Of large size, fine shape, good quality. Per doz. 40c 100 \$1.75 postpaid. By express per 100 \$1.50.



CARDINAL RASPBERRY

Clyde.—One of the most popular varieties in the west. It is of vigorous growth, very productive, berries are a deep scarlet in color and moderately firm. Per doz. 40c, per 100 \$1.25 postpaid. By express, per 100, \$1.00.

Senator Dunlap.—Very hardy, productive, a vigorous grower. It is unsurpassed in quality. Per doz. 40c, per 100, \$1.50 postpaid. By express per 100, \$1.25.

Bederwood.—Of excellent color and a good shipper. Ripens early. Per doz. 30c, per 100, \$1.00, postpaid. By express per 100, 75c.

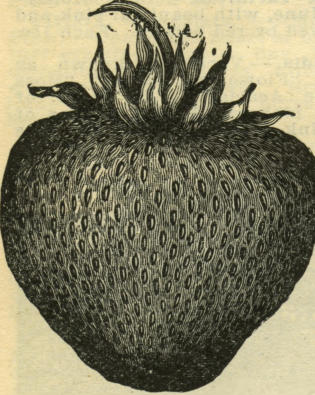
Crescent.—The old standard variety. Per doz. 25c, per 100 \$1.00 postpaid. By express per 100 75c.

CURRENTS.—Pomona.—The most productive and vigorous red currant ever introduced, ripens early, of fine quality. Each 20c, doz. \$1.75 prepaid.

Fay's Prolific.—One of the most prolific, of excellent quality. Each 15c, doz. \$1.25 prepaid.

White Grape.—Each 15c, doz. \$1.00 prepaid.

GRAPES.—McPike.—A great improvement on the Worden. Early, bunches large and compact, ripens

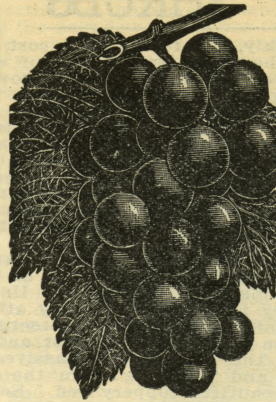


CLYDE STRAWBERRY

evenly and berries are of enormous size. Each 35c, doz. \$3.00 postpaid.

Campbell's Early.—Strong grower with large, healthy foliage. Very productive; bunch and berry large, glossy black with blue bloom. Sweet and juicy; clusters are usually shouldered. Each 35c, per doz. \$3.50 postpaid. By express per 100 \$15.00.

GRAPES Moore's Early.—Bunch large, berry large and round, vines exceedingly hardy. A very desirable early market, black variety, exceedingly hardy. Each 25c, doz. \$1.75, prepaid. By express per 100 \$5.00.



MOORE'S EARLY GRAPE

Worden.—A large grape of the Concord type, much earlier, larger and of better quality. The best all around black grape. Each 25c, doz. \$1.50 postpaid. By express, per 100 \$4.25.

Concord.—Each 20c, doz. \$1.50 postpaid. By express, per 100 \$4.00.

Lucile.—A beautiful bright red grape is an enormous bearer of excellent fruit. Each 50c, doz. \$4.00.

Agawam.—Berries are very large, bright red, with thick skin; very vigorous grower. Fine quality. Each 25c, doz. \$1.50 postpaid. By express, per 100 \$4.50.

Niagara.—This is a leading white variety, very productive and hardy. Bunch and berries large. Quality extra fine. Each 25c, doz. \$1.75, postpaid. By express, per 100 \$5.00.

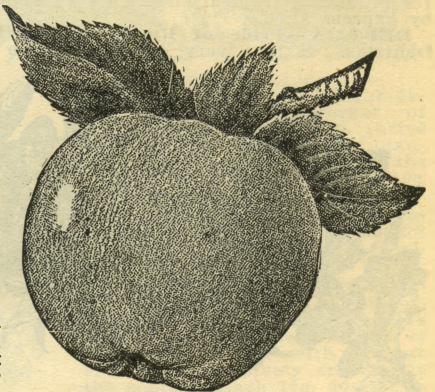
Brighton.—Of the best quality. Bunch and berry large, of bright red color and it is quite productive. Each 25c, doz. \$1.50.

PEARS.—These can be grown in Iowa and are proving quite profitable in some localities. We can furnish the Bartlett, Kieffer and Seckel at 50c each, \$4.00 per doz.

PEACHES.—Champion or Crosby at 30c each, \$2.50 per doz.

PLUMS.—Burbank, Lombard, Forest Garden, Abundance, Weaver and Wild Goose, 50c each, \$4.00 per doz.

CHERRIES.—Early Richmond, Montmorency, Wragg and English Morello at 50c each, \$4.50 per doz.



YELLOW TRANSPARENT APPLE

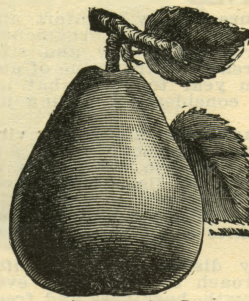
APPLES.—We have a large stock of choice varieties and specially recommend the following:

Early Varieties.—Yellow Transparent Benoni, Red June and Dutchess.

Autumn Varieties.—Maiden's Blush, Dyer, Fameuse and Sweet Swaar.

Winter Varieties.—Wealthy, Mammoth, Black Twig, Ingram, Ben Davis, Grimes Golden, Jonathan, Gano, Genetin, Talman, Sweet, Wagener and Northwestern Greening.

Any of above apples 25c each, \$2.25 per doz, for first-class, strong, healthy trees. Ask for prices by the hundred.



KIEFFER PEAR

SPRAYERS AND INSECTICIDES

Each year proves the importance of spraying fruit trees and plants in order to destroy the insects and secure a good crop of fruit. The largest and most successful fruit growers are the most enthusiastic on spraying.

BRANDT COMPRESSED AIR SPRAYER.—This is made on an entirely new principle that gives a continuous uniform pressure so that a uniform discharge is always secured from the nozzle. In our tests we have found it superior to any other make. Ask for circular. Price \$5.50; double nozzle \$1.00 extra.

LEVER BUCKET or BARREL SPRAY PUMP.—Similar to the Little Giant, but has lever handle and can be attached to barrel or bucket. Price \$4.75; with 8-foot extension \$5.25.

LIGHTNING ATOMIZER NO. 2.—One of the best insect exterminators on the market. Price only \$1.00; postage 25c extra.

LIGHTNING COMPRESSED AIR SPRAYER NO. 30.—An improved heavy galvanized iron tank, holding two gallons which works with a compressed air pump automatically. Only \$2.50, 3-foot brass extension pipe 50c.

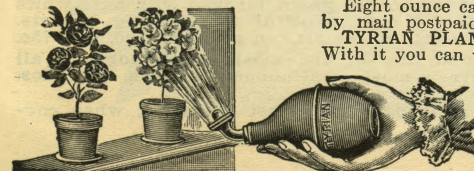
THE LITTLE GIANT BUCKET SPRAY PUMP.—Constructed entirely of brass and is provided with a large air chamber and has ball valves. Price \$3.75, with 8-foot pipe extension \$4.25.

HAMMOND'S SLUG SHOT.—It destroys all insects injurious to house and garden plants, shrubs, trees, vines, potatoes, melons, cabbage, currants, vegetables and fruits of all kinds. Not prepaid, 5 lbs. 30c, 10 lbs. 60c, 25 lbs. or more at 5c per lb. post paid 1 lb. 25c, 4 lbs. 95c.

SULPHO TOBACCO SOAP.—For a cheap, effective, clean and harmless insecticide for amateur and professional growers this is unexcelled. Quickly exterminates all insect life on plants and flowers in and out of doors.

Eight ounce cake, sufficient for four gallons prepared solution, for 20c, by mail postpaid 28c.

TYRIAN PLANT SPRINKLER.—Excellent for use on house plants. With it you can without injuring the plants or soaking the earth, quickly and very effectively sprinkle them. The bent neck enables you to spray the under sides of the leaves, which are hiding places for insects. Each 75c, postpaid.

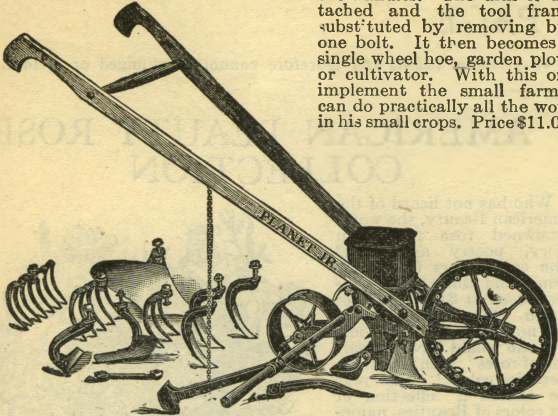


DAISY SPRAYING PUMP.—Used for spraying insecticides and whitewash in the poultry house, also for spraying fruit trees and plants. Price only \$1.00.



BRANDT'S SPRAYER

PLANET JR. NO. 4, COMBINED SEEDER AND CULTIVATOR.—This latest improved tool is giving good satisfaction. It combines in a single convenient implement, a first-class hill-dropping seeder, a perfect drill seeder, a single wheel hoe, a cultivator, and a plow. It holds two quarts and as a seeder it sows in continuous rows or drops in hills 6, 9, 12, 18 or 36 inches apart. It is thrown out of gear by simply raising the handles. The drill is detached and the tool frame substituted by removing but one bolt. It then becomes a single wheel hoe, garden plow, or cultivator. With this one implement the small farmer can do practically all the work in his small crops. Price \$11.00.



PLANET JR. NO. 4, SEEDER AND CULTIVATOR

Set of three rakes, if desired, \$1.00 extra. Price for plain drill, without cultivating attachments, \$9.00.

MATTHEWS' UNIVERSAL GARDEN DRILL.—A new one wheel drill of superior merit. It is particularly adapted to planting all kinds of garden seeds. The depth may be gauged to any required space and will make a uniform deposit of the seeds. The single wheel seeder is considered by many as superior to any double wheel drill. Price \$6.25.

FARMERS SINGLE WHEEL HOE.—Is especially designed for the farmers' garden work. The wheel is high so that it runs easily. The attachments consist of a large plow steel, a 10-inch sweep, 6-inch sweep, 4-inch cultivator tooth and a 2-inch cultivator tooth. Price \$3.75.

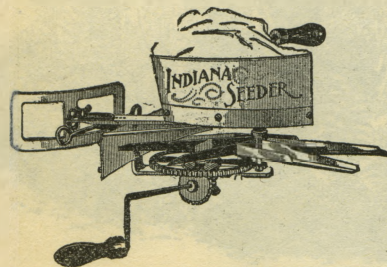
PLANET JR. NO. 8, HORSE HOE.—Probably no other cultivating machine is so widely known as the "Planet Jr." Combined Horse Hoe and Cultivator, for it is in use throughout the civilized world. It is so strongly built as to stand incredible strain, yet is light and easy to handle. Price \$9.00.

Ask for descriptive catalogue of garden tools, drills and cultivators.

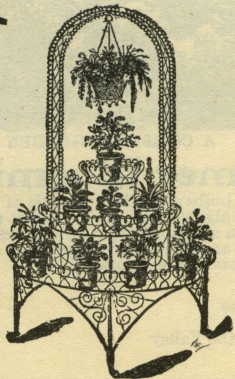
EUREKA POTATO PLANTER.—The best hand potato planter that we know of, as it does the work perfectly. Also plants beans and seed corn equal to any corn planter. Price \$1.25.

ROTARY CORN PLANTER.—Decidedly the best hand corn planter made, and a very desirable implement for those who have but a small field or need to replant their ground. It puts the corn exactly where you want it, and at a proper depth. Price \$1.50.

REDDICK MOLE TRAP.—If you are bothered with moles you should purchase one of these traps. It is undoubtedly the best trap made and no mole can pass under it and live. Price only \$1.00.



INDIANA SEED SOWER. An excellent broadcast seed sower, operated with a crank, which can be used with either the right or left hand. Gives splendid satisfaction. Price only \$1.50.



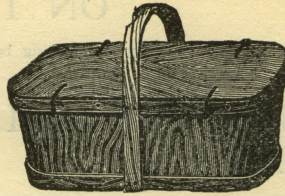
NO. 10 PLANT STAND

WIRE PLANT STANDS.—For strength, beauty of design and superior finish, our stands are unexcelled, if equalled. No. 10, illustrated herewith, is a very popular style. Price only \$4.50, or without the arch for \$3.50. Other styles cheaper.

WIRE BRACKET.—This new pattern is a very cheap, handsome bracket, made of tinned wire. Price: 4½-inch, 10c each, \$1.00 per doz.; 5½-inch, 12c each, \$1.25 per doz.; 6½-inch, 15c each, \$1.50 per doz.; postage 8c each extra.

LAWN MOWERS.—We consider the New Ball-Bearing Conqueror the best of all. Price: 14-inch, \$6.50; 16-inch, \$7.00; 18-inch, \$7.50; 20-inch, \$7.75. Can also furnish the Iowa Clipper. 12-inch, \$2.75; 14-inch, \$3.25; 16-inch, \$3.75.

BERRY BOXES.—Made of the best white wood (poplar) heart stock, cut smoothly, and perfect shape, size 4½x4½x3½, and will hold a wine measure quart. The bottom is set up for ventilation. They are usually put up in bundles of 500 boxes, complete for shipment, and are all ready for putting together, which can be done very rapidly. We furnish 500 at the 1000 rate, broken bundles at the 100 rate. Price per 100, 40c; 1000, \$3.50. If a large lot is wanted, ask for prices.



ANNEALED TACKS.—1 lb. makes 1000 boxes. Per lb., 25c; 5 lbs., \$1.00.

CLIMAX GRAPE BASKET.—The best package for shipping grapes, cherries, plums, etc. Nested for shipment with covers and bent handles in separate pkgs., 10 for 50c, 25 for 90c, 100 for \$3.25. Ask for prices in large lots.

POULTRY SUPPLIES

We handle a very complete line of Poultry Supplies of the best quality, and, as we purchase many items in carload lots, we are prepared to quote as low prices as can be obtained anywhere for first-class quality, freight considered.

PEARL GRIT.—No better grit can be found for poultry. Sharp and wears sharp. Per 25 lbs., 35c; 100 lbs., 85c; 500 lbs. or more @ 75c.

CRUSHED CLAM SHELL.—Used very extensively by poultrymen, being harder than oyster shell, and contains a large amount of available lime. 25 lbs., 35c; 100 lbs., 75c; 500 lbs. @ 65c.

CRUSHED OYSTER SHELL.—Your hens will keep healthier, lay better, and eggs will be more fertile if supplied with it. 10 lbs., 25c; 25 lbs., 40c; 100 lbs., 90c; 500 lbs. or more @ 80c.



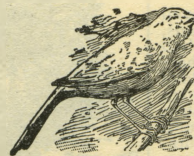
PLYMOUTH ROCK CHICK FEED.—A perfectly balanced ration for young chicks. It is composed of various kinds of grains, grit and other nutritive foods, making it the most complete and cleanest chick feed on the market. 25-lb. bag, 85c; 50 lbs., \$1.50; 100 lbs., \$2.75.

PLYMOUTH ROCK HEN FEED.—The best feed that can be made for laying hens and the keeping of all fowls in a healthy condition. 25 lbs., 70c; 100 lbs., \$2.25.

INCUBATORS.—Brooders, Bone Mills and all other supplies at low prices. Ask for a copy of our Complete Poultry Supply List.

POULTRY.—Choice pure bred poultry and eggs of all the best breeds. Ask for prices.

BIRDS AND GOLD FISH



We are sure that many of our customers will be interested in this department, as the companionship of a bird has brightened the life of many a tired, overworked mother and the music of a good songster makes the whole house more cheerful. For many years we conducted the largest mail order business in this line in the world, but it has now been sold to the IOWA BIRD CO., of Des Moines, whose beautiful illustrated catalogue can be had free on application. We ship live birds and fish safely to any part of the United States.

CANARIES.—Choice birds imported from Germany.

PARROTS.—We guarantee each bird to learn to talk. Stock is changing constantly. Ask for price when ready to buy.

GOLD FISH.—The most elegant of all parlor adornments. We furnish handsome medium size fish at 25c each, 5 for \$1.00. Small size, 10c and 15c each. Fancy Japanese and other fish, 50c to \$5.00 each. Ask for catalogue of Fancy Fish, Aquariums, Fish Globes, etc.



GLASS FISH GLOBE.

BARGAIN COLLECTIONS AND SPECIAL OFFERS

IT WILL PAY YOU TO READ EVERY WORD ON THIS PAGE

NOTICE.—These collections are all put up ready for mailing before our busy season begins and therefore cannot be changed or divided.

THE DES MOINES VEGETABLE COLLECTION

SPECIALLY SELECTED FOR TOWN AND CITY HOME GARDENS

Most people residing in towns and cities have not time or room sufficient to grow an extended garden. But vegetables fresh from the home garden are so far superior to those which can be purchased that we have made a special list for city people.



the entire collection prepaid to you for 75 cents.

- 1 pkt. Salamander Lettuce,
- 1 pkt. Rosy Gem Radish,
- 1 pkt. Icicle Radish
- 1 pkt. Early Ex. Cucumber,
- 1 pkt. Ex. Early Barlett's Onions,
- 1 pkt. Long Standing Spinach
- 1 pkt. Market Gardeners Beet,
- 1 pkt. Purple Top Milan Turnip.

8 PACKETS AS ABOVE POSTPAID FOR 25 CENTS.

Now if you have the room and time you will probably want some peas, beans, corn, and onion sets, and if so we will add to above one packet each of Improved Early, Valentine, Golden Wax and Henderson's Bush Lima Beans, Peep-O-Day and Country Gentleman Sweet corn, $\frac{1}{2}$ pint Premium Gem Peas, $\frac{1}{2}$ pint Everbearing Peas and 1 pint Yellow Onion Sets, and send

VEGETABLE PLANTS

JUST ENOUGH FOR THE HOME GARDEN.—It often happens that you would prefer to buy a few vegetable plants rather than bother with growing from seed. We appreciate this fact and offer you the following collection of vegetable plants in such way as to make it a veritable bargain.

- 15 Tomato
- 25 Early Cabbage
- 6 Pepper
- 6 Egg Plant
- 25 Celery
- 50 Sweet Potato

All by Mail,
Postpaid, for
\$1.00

\$1.00 COLLECTION

35 VARIETIES; BEST GARDEN VEGETABLES. ALL GOOD DESIRABLE SORTS—SURE TO PLEASE YOU.

Consists of one full-sized packet each of Improved Golden Wax Beans, Old Homestead Pole Beans, Market Gardener's Beet, Henderson's Snowball Cauliflower, Washington Wakefield Cabbage, Short Stem Drumhead Cabbage, Oxheart Carrot, Golden Self-Blanching Celery, Early Sunrise Corn, Country Gentleman Corn, Perfect White Spine Cucumber, Improved Ground Cherry, American Mammoth Brussels Sprouts, Page's Striped Rice Pop Corn, Continuity Lettuce, Improved Hanson Lettuce,

Rocky Ford Musk Melon, Duke Jones Watermelon, Large Red Wethersfield Onion, Mammoth Prizetaker Onion, Nott's Excelsior Peas, Early Scarlet Globe Radish, White Icicle Radish, Improved Table Guernsey Parsnip, Ruby King Pepper, Early Crookneck Squash, Long Standing Spinach, Mammoth Sandwich Island Salsify, Market Gardener's Parsley, Bond's Early Minnesota Tomato, Matchless Tomato, White Egg Turnip, Purple Top Strap Leaf Turnip, Monarch Rutabaga, and Vine Peach. Total 35 full-sized packets sent postpaid for \$1.00; at regular catalogue price they amount to about \$2.00.

NOTICE.—These collections are all put up ready for mailing before our busy season begins and therefore cannot be changed or divided.

IT IS A BARGAIN!—CAN ONE DOLLAR BE BETTER INVESTED?

AMERICAN BEAUTY ROSE COLLECTION

Who has not heard of the American Beauty, the world renowned rose famed in story, poetry and song? The cut flowers frequently being sold during the winter season at \$10 to \$25 per dozen. What flower lover has not dreamed that some day she would have a "garden of roses", with American Beauties galore? Last year we offered a collection of six colors of Beauties, namely: red, white, pink, black, striped and moss Beauties and there was such an immense call for them that we have decided to repeat the offer. One plant each of the six Beauties for only 75c, or a large two-year old plant of each for \$1.85, charges prepaid.

NOTICE.—That above collection contains the noted White American Beauty and the Beauty Moss Rose.



GOLDEN ACRE ROOT COLLECTION

The cattle and hogs thrive better and keep in better condition if you have a few sugar beets and rutabagas, and carrots will put a satin finish on the horses' coat. You cannot raise as much feed on any part of your farm as you can on this acre devoted to roots and which is to be planted as follows:

2 1/2 lbs. Giant Half long Sugar Beet (half acre)
1/2 lb. Victoria Carrot and 1/2 pound Monarch Rutabaga, all postpaid for \$1.50.



A COMPLETE GARDEN LIKE THIS FOR \$1.00.

95 Summer Blooming Bulbs for \$1.00

We grow acres of bulbs and sell thousands of them to eastern dealers. In growing such quantities there are always some which do not attain full size, but they are thoroughly matured and will bloom about as well as the largest bulbs, which would cost many times the price. These bulbs are all choice varieties and sure to grow and bloom soon after planting. The collection consists of the following:

- 15 Showy Gladiolus
- 8 Fragrant Tuberose
- 4 Gorgeous Cannas
- 4 Beautiful Lily of the Valley
- 4 Elegant Iris

- 4 Cinnamon Vine Bulblets
- 2 Apios
- 2 Amaryllis
- 2 Calladiums
- 50 Charming Oxalis for the border

TOTAL 95 BULBS FOR \$1.00

DECIDEDLY THE BEST BULB OFFER EVER MADE

Address all orders to Iowa Seed Company, Des Moines, Iowa