

EXTRA

IOWA STATE KANSAS



1969  
**Saturday, October 25, 1:30 p.m.**  
**Clyde Williams Field • Ames, Iowa**

**75¢**



# IOWA ROAD BUILDERS

## ● CYCLONE SCOUTING REPORT

Big, burly, agile, aggressive, and good — those are just a few of the adjectives that apply to Kansas, Iowa State's homecoming football foe.

Whatever a team needs to produce a winning season is present in abundance on the Jayhawk squad. Few teams will bring in more speed and the fastest of the Jays is Ron Jessie. This Yuma, Ariz. junior came to Kansas on a football scholarship yet also lettered as a track man for Bob Timmons.

Power is represented in two outstanding backs — John Riggins, who played fullback last year, and Mike Reeves, who plays that position now. Riggins was the top sophomore back in the conference last year. He has been shifted to tailback to get greater use of his power and speed. Cyclone scouts feel this is the best backfield in the Big Eight.

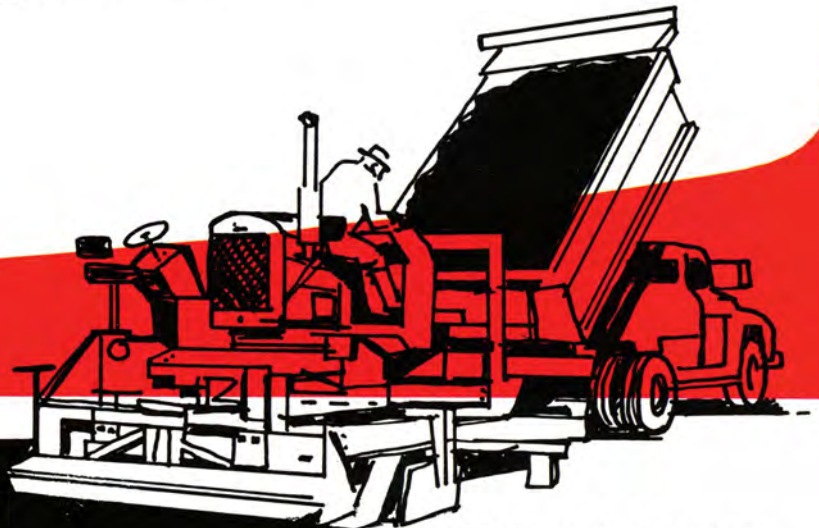
Jim Ettinger is the quarterback who does an outstanding job in the short pass game. He

played two years behind Bob Douglass.

Pepper Rodgers runs his Jayhawks from at least three formations: The power I, the pro I, and the slot formation. This, naturally poses a lot of defensive problems for the opposition.

Defensively the Kansas team works mostly from a five or six man front and basically favors man for man pass coverage. Kansas is using nearly an all new secondary but one that gets tougher each week. The line likes to stunt a lot with its top linebacker in the key role.

The big men in the defense — and they are big — are Karl Salb and Emery Hicks. Salb, who is also the nation's top collegiate shot putter, stands 6-4 and weighs 275 pounds. His right tackle spot is a good one to ignore when testing the Kansas line. Backing up the huge (with a 237 pound average) Kansas line is Hicks, rated as the best linebacker in Kansas history.



IOWA ROAD BUILDERS  
AMES IOWA Phone 233-2005

- ★ READY MIX CONCRETE
- ★ ASPHALT SURFACING
- ★ CEMENT & TAR FOR ALL OCCASIONS



Today on your way home, listen to —

## **THE JOHNNY MAJORS' LOCKER ROOM REPORT**

brought to you by —

NORTHERN NATURAL GAS COMPANY • KEN LOGAN BUICK  
PRODUCERS OF PIONEER BRAND SEEDS • BANKERS TRUST

who also present

**Play-by-Play of all the Iowa State Games**  
**at home and away, with Bud Sobel**  
**and**

**The Johnny Majors' Pre-Game Show**  
**before each Cyclone Game**

# **KRNT RADIO**



Tomorrow, watch —

## **IOWA STATE FOOTBALL HIGHLIGHTS**

**with Coach Johnny Majors and Bud Sobel**

brought to you by

AMERICAN DAIRY ASSOCIATION • RUAN TRANSPORT  
H. M. ILTIS LUMBER COMPANY • BLACK & DECKER DEWALT

See Cyclone Game Films in color of all games both  
at home and away, every Sunday immediately following  
the NFL Game on CBS.

# **KRNT-TV • 8**

*The Station Most Central Iowans Watch For Sports*

# Iowa State Courtesy Car Program

Nineteen automobile dealers in Iowa are helping the Iowa State athletic program through the loan of courtesy cars. Like other programs which are a part of the Cyclone Club, this project enables Iowa State to make greater use of its funds. These sports-minded dealers around the state have earned a great debt of gratitude from the Iowa State University Department of Intercollegiate Athletics. They are a most important part of the "team", a team that includes players, coaches, administration, faculty, staff, students, alumni, and the men behind the courtesy car program.



HAROLD VOGLER & GEORGE NIEMAN  
Vogler-Nieman Chevrolet, Inc.  
813 - 6th - Boone  
(Buick & Chevrolet)



NORM DUNLAP  
Motor Sales & Service  
Lincoln Way & Kellogg - Ames  
(Dodge & American)



FLETCHER & JIM ALLEN  
Allen Motor Company  
5th & Douglas Ave. - Ames  
(Buick & Chevrolet)



BOB SCANLAN  
Scanlan Oldsmobile Cadillac, Inc.  
222 Duff - Ames  
(Cadillac & Oldsmobile)



BOB ALLEN  
Bob Allen Motor Company  
128 Lincoln Way - Ames  
(Chrysler & Plymouth)



ART & DICK MATHISON  
Mathison Motor Company  
323 5th - Ames  
(Ford)



ART SKEIE  
Skeie Motor Company  
202 South Duff - Ames  
(Pontiac)





H. H. "RED" REES  
Rees Motor Company  
806 - 7th - Boone  
(Oldsmobile & Pontiac)



JACK NYSTROM  
Nystrom Motors, Inc.  
709 - 10th - Boone  
(Chrysler, Plymouth)



TOM KELLY  
Tom Kelly Ford  
11 North 25th Street - Fort Dodge  
(Lincoln, Ford, Mercury)



BOB MICKEY  
Mickey Ford, Inc.  
Highways 169 & 3 - Humboldt  
(Lincoln, Ford, Mercury)



RAY LAUTERBACH  
Lauterbach Chevrolet  
805 Railroad St. - Perry  
(Buick, Chevrolet)



JIM CORDES  
Jim Cordes Ford, Inc.  
2033 LaPorte Road - Waterloo  
(Ford)



MORRIS "SHERB" SHERBRING  
Sherbring Chevrolet Company  
Main & Lincolnway - Ogden  
(Chevrolet)



LEO LEVIEN  
Levien Chevrolet  
Crossroads Center - Fort Dodge  
(Chevrolet)



MERT COOVER  
Coover Chevrolet  
Lincoln Way - Nevada  
(Chevrolet, Oldsmobile)



HARRY & HANK MORRISON  
Morrison Chevrolet Company  
Division Street - Stuart  
(Chevrolet)



R. C. "BOB" BARRY  
Barry Motor Company  
Main Street - Highway 175 - Danbury  
(Ford)



DON GOODER  
Don Gooder Motors  
Highway 9 West - Cresco  
(Ford, Mercury)



# LOOKING

for a bank that can give you  
**Complete Financial Service?**

# LOOK

to the "Problem Solvers"

**TWO LOCATIONS**  
(on Campus - Downtown)

**1<sup>st</sup>**

**FIRST NATIONAL BANK**  
AMES IOWA

MEMBER OF FEDERAL DEPOSIT INSURANCE CORPORATION



OTTO STOWE  
Springfield, Ill. - Junior

**CYCLONE INN**

ACROSS FROM THE STADIUM

STOP IN FOR A  
SNACK AFTER THE GAME

**LUMS**

TOM POTTER  
Sheldon - Junior



IN THE HEART OF  
CYCLONE COUNTRY  
DROP IN AFTER THE GAME

FEATURING:

- ☆ ROAST BEEF
- ☆ SUBMARINE SANDWICHES
- ☆ IMPORTED & DOMESTIC BEER

414 LINCOLN WAY • AMES • PHONE 232-1685

**EMPLOYEE OWNED**

**Hy-Vee**

**FOOD STORES**

112 So. Sheldon—207 So. Duff  
Weekdays: 8 a.m. - 9 p.m.  
Sundays: 9 a.m. - 6 p.m.



STEVE KARBER  
Grand Junction - Junior



## MONTGOMERY WARD & CO.

RETAIL STORE 232-0260  
CATALOGUE ORDER 232-7510

WARD PLAZA SHOPPING CENTER, AMES, IOWA

BOB WILLIAMS  
Omaha, Neb. - Junior

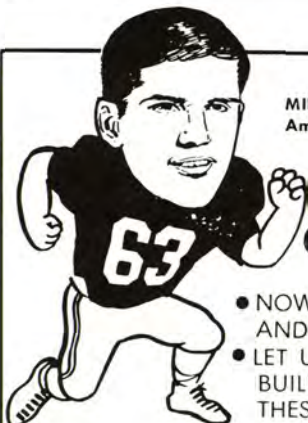


## Durlam & Durlam

"Known For Good Clothes"

226 Main Street • Ames

MIKE BLISS  
Ames - Senior



## BLISS Construction Co.

- NOW BUILDING IN BROADMOOR AND ALLENVIEW ADDITIONS
- LET US DESIGN A HOME OR BUILD YOUR PLAN ON ONE OF THESE LOTS

PHONE 232-7325 RICHARD K. BLISS

OBERT TISDALE  
Waterloo - Junior



## LANDSBERG PHARMACY

IN CAMPUS TOWN

2402 LINCOLN WAY • AMES

# It's Performance that Counts!



COMPLETE CAR SERVICE

GO FIRST CLASS — GO PHILLIPS 66



FRED JONES  
Minneapolis, Minn. - Senior

## GARY THOMPSON OIL CO.

Distributor

510½ Lincoln Way Ames  
Phone 232-4666

## HERB'S PHILLIPS 66

412 South Duff  
South of Holiday Inn  
Phone 232-5495



# IOWA STATE FOOTBALL COACHING STAFF



JOE AVEZZANO



KING BLOCK



RAY GREENE



JIM JOHNSON



OLLIE KELLER



JOE MADDEN



JACKIE SHERRILL



GORDON SMITH



ARCH STEEL



PHIL CALLICUTT

Johnny Majors heads as fine a young football staff as there is in the nation today. He has blended youth and experience in perfect balance in his program that is destined to bring football excellence to Iowa State University.

Majors is one of the all-time Tennessee greats. He earned All-American honors in leading Tennessee to an unbeaten season in 1956. He was selected as the outstanding player in the nation that year. A great high school star, Majors was a winner then, in college, and as an assistant coach at Tennessee, Mississippi State, and Arkansas before coming to Iowa State following the 1967 season.

King Block was a great prep star in his native Idaho and a top fullback at the University of Idaho. His coaching talents have boosted football fortunes at Idaho, Arkansas State, Nebraska, and Washington State.

Jim Johnson was one of the finest nose guards ever to play for Arkansas following a great prep career in Port Arthur, Tex. He coached at Louisiana Tech, Arkansas, and Wichita State.

Joe Madden is a graduate of the University of Maryland and has been a top assistant at Mississippi State and Wake Forest before re-joining his old friend Johnny Majors at Iowa State.

Gordon Smith was no stranger to Iowa State, having played two years as an end for Missouri. He played for the Minnesota Vikings five years and was on the Arkansas Staff when Majors brought him to Iowa State.

Jackie Sherrill captained one of Alabama's national champions, later coached at his alma mater and then at Arkansas before moving north with Majors.

Ollie Keller was an outstanding player for Memphis State and then coached prep teams there until he joined Majors at Iowa State.

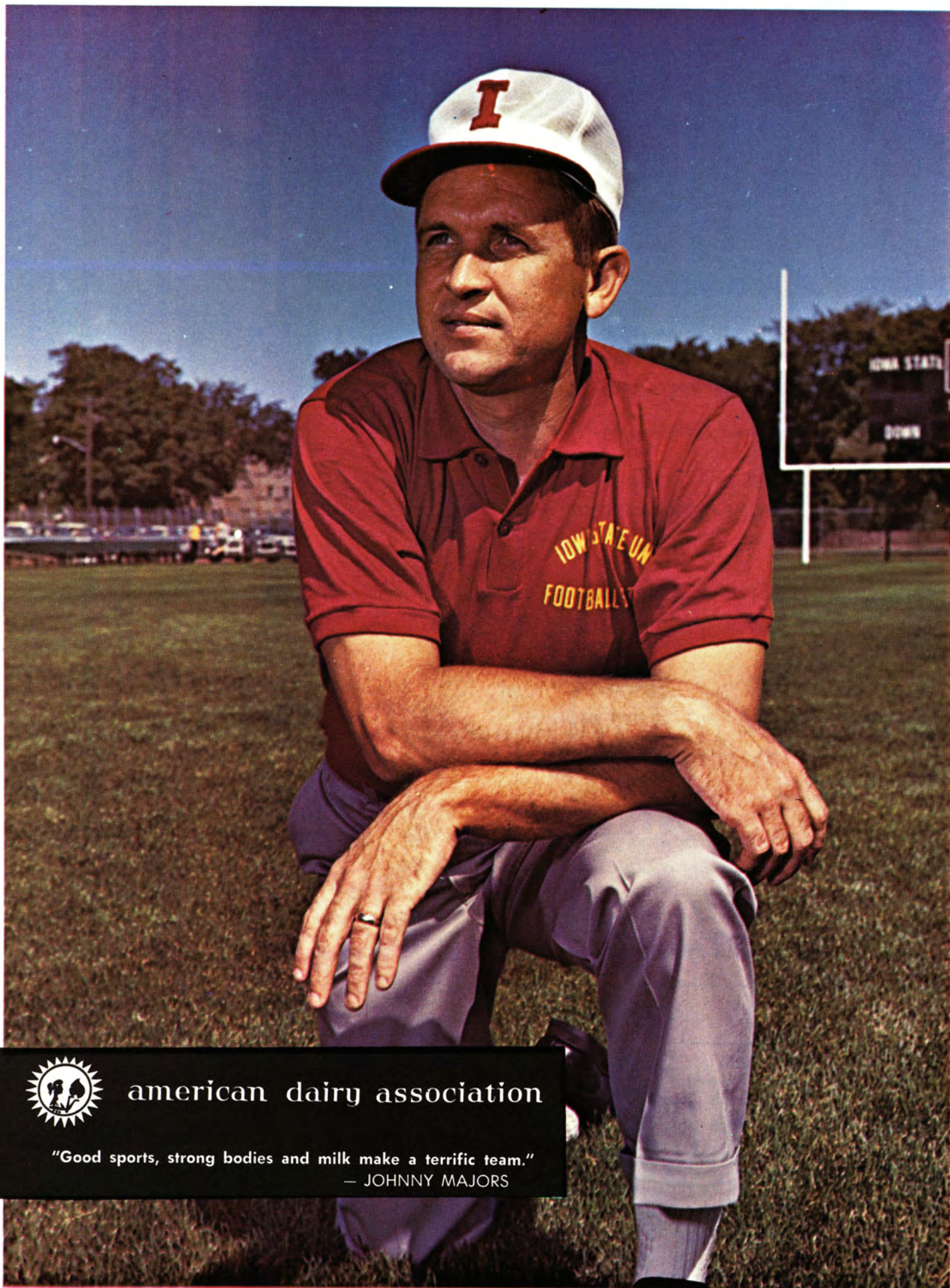
Joe Avezzano played for Florida State after a four-sport career in Miami. He coached both at the high school level and at Florida State.

Ray Greene, a triple threat star at Akron South, then with the University of Akron (captain as a senior). Coached all sports in high school and was on the University of Miami (Florida) staff when he came to Iowa State.

Arch Steel doubles as one of Majors' assistants and as academic counselor for the athletic department. A great player at Bowling Green, Steel joined the Iowa State staff in 1954. He had a long career as a prep and college coach before becoming a Cyclone.

Phil Callicutt, the head trainer for the Cyclones, has been a top flight trainer for 11 years and is still only 26. He is an Iowa Stater who worked with the football Cardinals, East Carolina State, Florida State and was head football trainer at West Virginia when he returned to Iowa State after the 1969 football season.



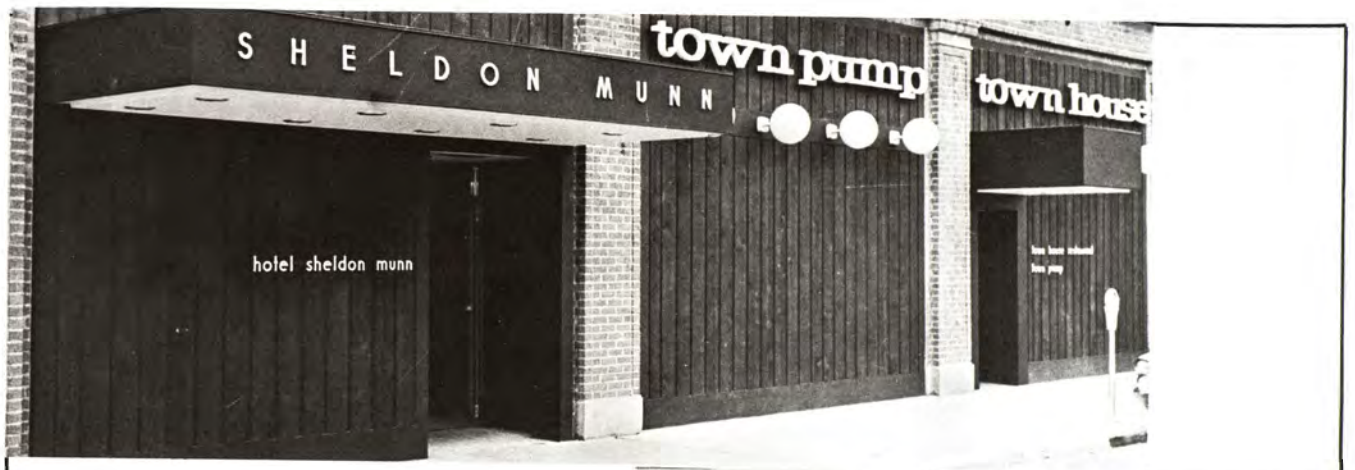


american dairy association

"Good sports, strong bodies and milk make a terrific team."

— JOHNNY MAJORS





**WELCOME TO THE TOWN PUMP AND  
TOWN HOUSE RESTAURANT**

**In The Hotel Sheldon-Munn**

**YOUR CYCLONE CLUB HEADQUARTERS  
AFTER ALL HOME FOOTBALL GAMES.**



**GREG DUKSTEIN**  
Allen Park, Mich. - Senior

**Heaton's**  
FLOOR COVERINGS

CENTRAL IOWA'S LARGEST  
MOST COMPLETE FLOOR  
COVERING CENTER  
402 MAIN ST. • AMES • PHONE 232-4151



**JERRY FIAT**  
Oak Lawn, Ill. - Senior

**DAVE'S  
LOUNGE**

ENTERTAINMENT NIGHTLY

- ☆ DANCING
- ☆ COCKTAILS
- ☆ MIXED DRINKS ☆ DRAFT BEER

111 FIFTH STREET AMES, IOWA Phone 232-9818



**TOM ELLIOTT**  
Swea City - Senior

FOLLOW THE CYCLONES  
IN THE  
**Ames Daily  
Tribune**

317 FIFTH STREET, AMES, IOWA



**CHUCK WILKINSON**  
Chicago, Ill. - Junior

**JOE WHELOCK  
CONOCO**

"TRY US FIRST FOR EVERYTHING"

- BRAKES • TUNE-UPS
- MUFFLERS & TAIL PIPES
- WASH & GREASE

6th & DOUGLAS • AMES • PHONE 232-4544







# WELCOME Football Fans!

Put King's Food Host U.S.A. on your program and you'll receive the same friendly welcome...the same popular Photo-Menu...the same consistently good food...the same fast service on a festive game day as on ALL days at King's.

Good food shared with family and friends in sociable surroundings is a big part of the fun of your football outing. In fact, it ranks right up there after the game itself. And that's a great time to come to King's. Right after the game! See you then, if not before.



**KING'S Food Host U.S.A.**

801 Lincoln Way

232-5202



JOHN GRIGLIONE  
Des Moines - Junior

**Schoeneman  
Brothers  
Lumber Company**

"QUALITY SERVICE AND PRICE"  
LUMBER AND BUILDERS HARDWARE

PHONE 232-2372 AMES, IOWA



JERRY BERNA  
Chicago, Ill. - Junior

**RED RAM**

FEATURING:

- ☆ GERMAN FOODS
- ☆ STEAKS
- ☆ ENTERTAINMENT

ONE OF AMERICA'S NO. 1 FUN & FOOD PLACES  
123 KELLOGG • AMES • PHONE 232-5404



**GO CYCLONES!**



ENJOY THE  
GAME  
WITH

*Dubuque*

**HOT DOGS**

DISTRIBUTED BY

**CARRIAGE HOUSE**

MEAT & PROVISION COMPANY  
AMES, IOWA

1131 DAYTON RD.

PHONE 232-2273

... furthermore, those dollars  
can take you farther

Whether it's a weekend in Washington or a month in Monaco . . . it's our responsibility as travel consultants to help you get the most for your travel dollar. That is our policy. And it's one of the reasons we say our service costs you nothing. Our pay comes from the carrier and/or hotel in commissions earned as agents.

Next time, come travel with us.

**TRANS-TRAVEL**

5th and Clark Ames 232-3131



# Glamour Teams of the Past Here Today

While the big interest in this homecoming, as always, is the game to be played on Clyde Williams Field there are some teams here in the stands that have brought fame and glory to Iowa State.

Thirty-five years ago, for instance, Louie Menze's patience paid off in the form of the first Big Six basketball championship. Menze ranks as one of the best in the basketball coaching field. He was a great developer of material, taking many a rugged, awkward Iowa farm lad and developing outstanding players from that raw material. Two such "greenhorns" were key figures in the 1934-35 championship team—Waldo Wegner, director of the Center for Industrial Research and Service at Iowa State, and Frank Hood.

The baseball champions of a year later, too, are being honored today.

There are many other fine teams and fine athletes present this afternoon but it is highly unlikely that any captured the imagination and attention the way the Dirty Thirty football team of 1959 did.



The eleven young beauties on the program cover this week are Iowa State University Pom-Pom girls who will be in action in front of the stands today. Starting from the 6 o'clock position and going clockwise are Mary Stephany, Woodbine, Karen Stine, Ames, Marsha Lovaas, Edina, Minn., Laura McQuown, Red Oak, Janelle Cook, DeKalb, Ill., Jean Ellson, Vinton, Michele Comann, Des Moines, Abby Nelson, Sioux City, Cynthia Hankin, Edina, Minn., Linda Lyon, Pleasantville, and Michelle Morris, Des Moines.

The way the fall started out there seemed little hope that the Cyclones could even field a team let alone have a winner. Player after player dropped out of football, one the day after he had made the first team! Injuries took toll, too. Finally there were just 30 players left—young men who looked more like a small high school team than one fated to rank among the best for the year. The biggest man on the team was Larry Van Der Heyden who played tackle at about 195.

Clay Stapleton had shifted men about to take advantage of physical quickness, mental toughness, and gutty desire. His entire line was made up of men who had played either fullback or halfback in high school. Van Der Heyden, for instance, had been one of the most widely sought running backs in the state of Illinois. Arden Esslinger, now a center, had been an Iowa All-stater.

The line probably averaged 190, if that much. The team itself averaged 179 for the 11 starters.

There wasn't much stir caused in the opening 41-0 win over Drake. But something did happen at the half-time. The field was muddy and the Cyclones were a mess when they trooped to the locker room at the half. Warren Araial, the Cyclone

trainer, looked up and jokingly remarked: "Well, here comes the Dirty Thirty!"

The squad liked the nickname so well that it voted the game ball to trainer Araial.

That became the rallying cry for a team that never knew it was too little to play big time football, that never for a minute figured it could not whip any team any time.

"Go, Dirty Thirty" was the yell for a rabidly enthusiastic gang of student fans. And when it was all over the Dirty Thirty missed by one game of going to the Orange Bowl. Maybe a chartered flight that never arrived meant the difference of that game. When the plane did not reach the Cyclones, they had to take a bus to Kansas City, arriving at 1:30 in the morning, getting little sleep either on the bus or at the hotel. A late touchdown against the tired Dirty Thirty gave Kansas the win, 7-0.

Captain of that team, Dwight Nichols, was an All-American tailback at 161 pounds. But to Mo and all the rest of us, all his teammates were All-American, too.

Those of us who watched these fine teams and players through the years want you who have come back today to know that we treasure the memory of your days of glory.



WILLIE HARRIS  
Muskegon, Mich. - Junior

*Holiday Inn*

PLAYS HOST TO  
CYCLONE COUNTRY

316 SO. DUFF AVE. • AMES • PHONE 232-1810



MIKE KIRAR  
Peru, Ill. - Senior

**J. C. PENNEY  
COMPANY**

YOUR SATISFACTION IS OUR GOAL  
326 MAIN STREET • AMES • PHONE 232-2650



BOB BROUILLETTE  
Sioux City - Senior

Read The Peach Section  
in the

*The Des Moines Register*

Downtown Agency Campus Agency  
232-6220 232-4562

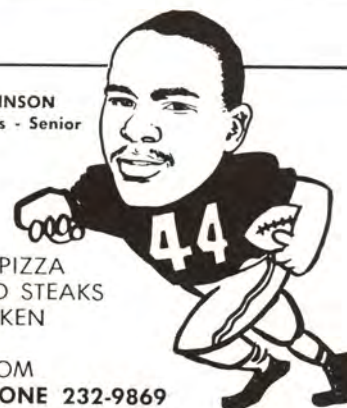
Glen and Jon Lowman



BOCK JOHNSON  
Des Moines - Senior

**SAFARI**

- ITALIAN FOODS — PIZZA
  - CHARCOAL BROILED STEAKS
  - SEA FOODS — CHICKEN
  - COCKTAILS
  - PRIVATE PARTY ROOM
- 136 MAIN, AMES PHONE 232-9869  
Open 4:30 p.m. to 12 m. DAILY



K. J. BARTELS, P.E.  
BSCE '55

SAM JENNISON, P.E.  
BSCE '57

# Ames Ready-Mix Concrete, Inc.

**"Welcome To Cyclone Country"**

MIAMI BRICK — READY-MIX CONCRETE — BUILDING  
MATERIALS — LUMBER — SAND & GRAVEL

**Serving Cyclone Country From Six Locations**

Ames Ready-Mix Concrete  
Nevada Ready-Mix  
Story City Ready-Mix  
Hubbard Ready-Mix  
State Center Ready-Mix  
Zearing Lumber & Ready-Mix

"Call Us For Your Brick And Other Building Needs."



# Homecoming for Alumni

## \* After-Game Coffee

State Gym — Ground Floor

Free coffee, cider and doughnuts, courtesy of the Alumni Association

## \* Concert

"Sergio Mendes and Brasil 66" 7 and 9:15 p.m. — Stephens Auditorium

## \* Dance

"People" — Emerald Brass 9 p.m. — Combined Ballrooms, Memorial Union **Alumni Welcome!**

## \* Saturday Night Happening

7 p.m. — Shakey's Pizza Parlor



ALUMNI  
**ISU**  
ASSOCIATION

For Cyclone Fans  
at  
Lincoln, Nebraska

**November 8**

Buffet Brunch — 10:30 a.m.  
Cornhusker Hotel

Free transportation to and from the game  
The ISU Alumni Association  
in cooperation with the Lincoln ISU Alumni Club

## There's a Club Near YOU

The ISU Alumni Association  
sponsors 80 Alumni Clubs

- ☆ Events at out-of-town games
- ☆ University speakers
- ☆ Picnics, plays, dances
- ☆ Local alumni awards

☆ These are some of the  
activities of University Clubs



# IOWA STATE CYCLONES



21 - JEFF ALLEN  
Chicago, Ill.  
Coach - Carl Bonner  
Major - Physical Education



70 - MIKE ASHTON  
Clinton, Iowa  
Coach - Wayne Phillips  
Major - Physical Education



69 - BOB BANGER  
Des Plaines, Ill.  
Coach - Ken Olsen  
Major - Industrial Administration

22 - RALPH BARACZ  
Cleveland, Ohio  
Coach - Bill Jacobs  
Major - Physical Education

79 - TOM BARNES  
Antigo, Wis.  
Coach - Dale Peterson, Jim Lanham  
Major - Physical Education

37 - BRUCE BEERMAN  
Demarest, N.J.  
Coach - Dom Sgro  
Major - History

78 - JERRY BERNA  
Chicago, Ill.  
Coach - Bernard O'Brien,  
Henry Saltizeky  
Major - Physical Education







50 - WAYNE BESKE  
Minneapolis, Minn.  
Coach - Paul Benepe  
Major - Physical Education



63 - MIKE BLISS  
Ames, Iowa  
Coach - Cecil Spatcher  
Major - Distributive Studies



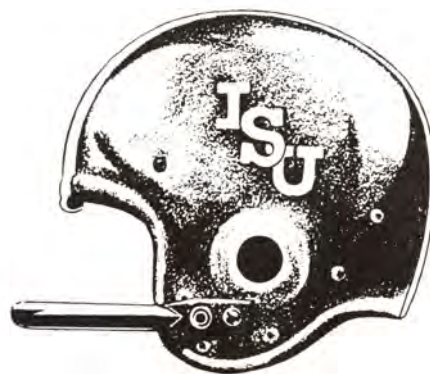
71 - BOB BOGNAR  
Hammond, Indiana  
Coach - Frank Lentvorsky  
Major - Electrical Engineering



74 - CRAIG BOLLER  
Belmond, Iowa  
Coach - Chuck Stalker, Rich Koolbeck  
Major - Physical Education



56 - JERRY BOYINGTON  
Clarion, Iowa  
Coach - Wayne Bergstrom  
Major - Farm Operation



CYCLONES

53 - KEN CARATELLI  
Oak Park, Mich.  
Coach - Al Fracassa  
Major - Industrial Administration

40 - BOB BROUILLETTE  
Sioux City, Iowa  
Coach - Don Fleming  
Major - Industrial Administration

35 - RAY COFFEY  
Humeston, Iowa  
Coach - Max Franklin  
Major - Agricultural Education

25 - RAY COLEMAN  
Waukegan, Ill.  
Coach - Walter Ruchs  
Major - Sociology







97 - TIM CONNOR  
Morris, Ill.  
Coach - Larry Kane  
Major - Pre-Veterinary Medicine



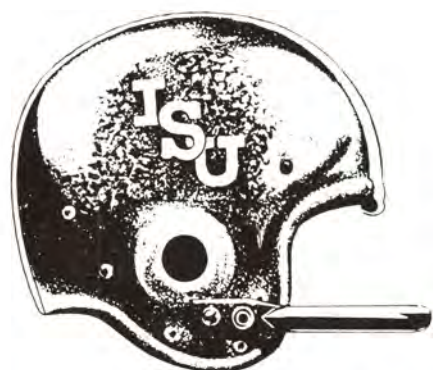
20 - BOB DWYER  
Lansing, Ill.  
Coach - Al Freyman  
Major - Sociology



76 - JIM CROW  
St. Louis, Mo.  
Coach - Don LaPlante  
Major - Industrial Administration



87 - GREG DUKSTEIN  
Allen Park, Mich.  
Coach - Carl Swicki  
Major - Physical Education



CYCLONES



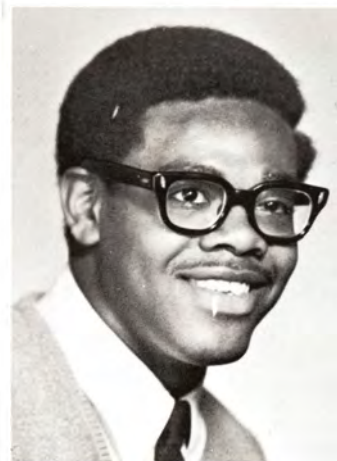
64 - BILL EASTER  
Moline, Ill.  
Coach - Ken Funk  
Major - Zoology

29 - TOM ELLIOTT  
Swea City, Iowa  
Coach - Wayne Baker  
Major - Physical Education

61 - ELVE EVERAGE  
Alton, Ill.  
Coach - Ed Lounkus  
Major - Physical Education

45 - JERRY FIAT  
Oak Lawn, Ill.  
Coach - Dave Walery  
Major - Physical Education

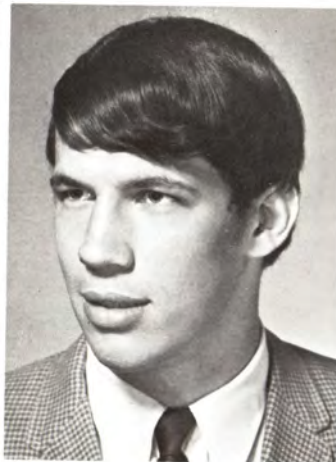
17 - MIKE FONTANINI  
Des Moines, Iowa  
Coach - Jim Williams  
Major - Computer Science



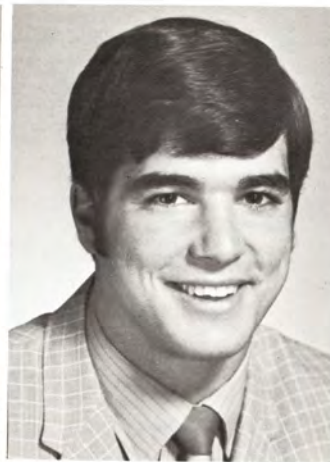




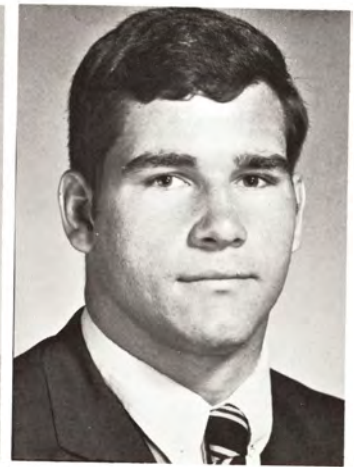
54 - GARY FRASER  
Allen Park, Mich.  
Coach - Norm Mihatsch  
Major - History, Physical Education



94 - GEORGE GAN  
Hackensack, N.J.  
Coach - Tom Della Torre  
Major - Physical Education



10 - RON GATTONE  
Temple, Pa.  
Coach - Paul Koch  
Major - Industrial Administration



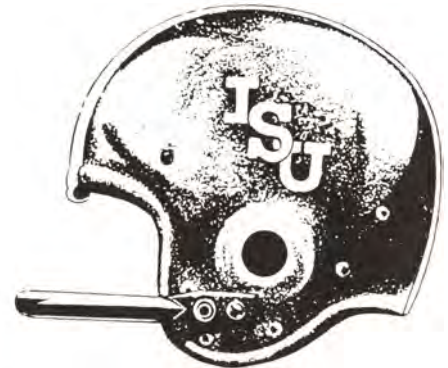
65 - JOHN GRIGLIONE  
Des Moines, Iowa  
Coach - Jim Williams  
Major - Physical Education



93 - RAY HARM  
Closter, N.J.  
Coach - Dom Sgro  
Major - Mathematics



48 - WILLIE HARRIS  
Muskegon, Mich.  
Coach - Roger Chiaverini  
Major - Physical Education



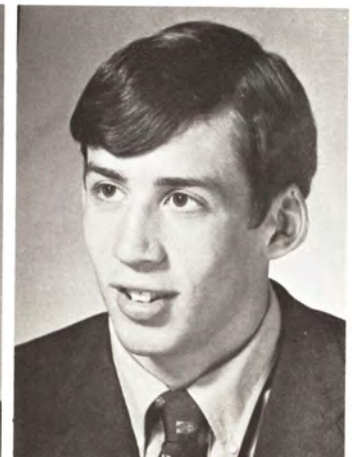
# CYCLONES

28 - TOM HILDEN  
Glencoe, Ill.  
Coach - Ed Heikinen  
Major - Distributive Studies

32 - LARRY HOLTON  
Keokuk, Iowa  
Coach - Herb Cormack  
Major - Physical Education

98 - DAVE JAHNKE  
Iowa City, Iowa  
Coach - Frank Bates  
Major - Industrial Administration

19 - STEVE JACOBSEN  
Harlan, Iowa  
Coach - Terry Eagen  
Major - Physical Education







77 - TIM JEFFRIES  
Marshalltown, Iowa  
Coach - Jack Blazek  
Major - Science



44 - JOCK JOHNSON  
Des Moines, Iowa  
Coach - Bob Savage  
Major - Physical Education



66 - FRED JONES  
Minneapolis, Minn.  
Coach - Bernie Nerdahl  
Major - Industrial Administration



49 - STEVE KARBUR  
Grand Junction, Iowa  
Coach - Lee Arrowsmith  
Major - Pre-Medicine



CYCLONES



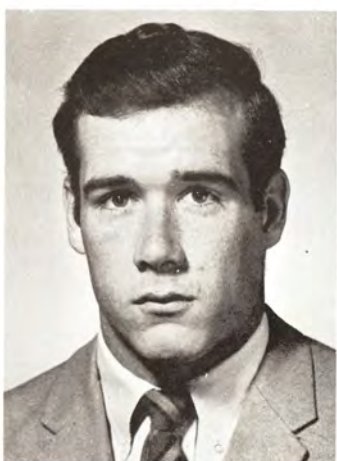
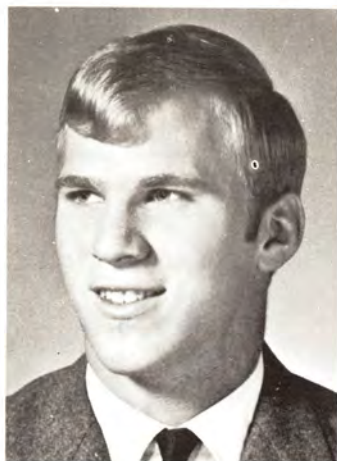
82 - MIKE KIRAR  
Peru, Ill.  
Coach - Gene Cherney  
Major - Physical Education

89 - DICK KOHLER  
Melrose Park, Ill.  
Coach - Tom Beck  
Major - Civil Engineering

86 - JOHN KELLY  
Des Moines, Iowa  
Coach - Bob Savage  
Major - Aerospace Engineering

68 - DOUG LOGUE  
Fort Dodge, Iowa  
Coach - Bob Algae  
Major - Mechanical Engineering

59 - MIKE LORBER  
Independence, Iowa  
Coach - Lyle Leinbaugh  
Major - Architecture



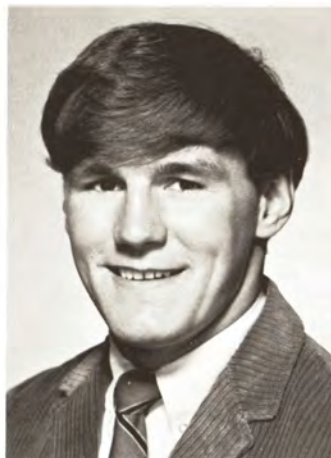




80 - TOM LORENZ  
Reinbeck, Iowa  
Coach - John Hartung  
Major - Physical Education



73 - JOE MARCONI  
Chicago Heights, Ill.  
Coach - Norm Mack  
Major - Distributive Studies



72 - BOB MARTINSON  
Bemidji, Minn.  
Coach - K. E. Wilson  
Major - Architecture



58 - BOB MATEY  
Youngstown, Ohio  
Coach - Reg Angelo  
Major - Physical Education



33 - DENNIS McDONALD  
Morning Sun, Iowa  
Coach - Dob Darah, Jerry Knausse  
Major - Pre-Veterinary Medicine



39 - DON McLAUGHLIN  
White Plains, N.Y.  
Coach - Glen Loucks  
Major - Industrial Administration

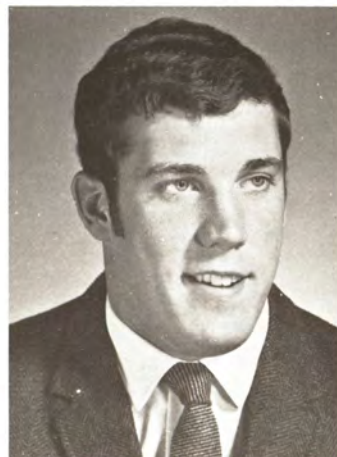


99 - LES MITCHELL  
Cleveland, Ohio  
Coach - Sam Ruvolo  
Major - Physical Education

84 - JOHN MORIARTY  
Lynn, Mass.  
Coach - George Moriarty  
Major - Physical Education

95 - DICK MULLER  
Algona, Iowa  
Coach - Bernard Cooper  
Major - Physical Education

47 - TOM PADJEN  
Lansing, Ill.  
Coach - Al Freyman  
Major - Industrial Administration







24 - MIKE PALMER  
Steubenville, Ohio  
Coach - Abe Bryan  
Major - Sociology



18 - DOUG PARSONS  
Des Moines, Iowa  
Coach - Lloyd Klinzman  
Major - Distributive Studies



51 - STEVE PELISEK  
Cedar Rapids, Iowa  
Coach - Wally Sheets  
Major - Physical Education



90 - TOM POTTER  
Sheldon, Iowa  
Coach - Dave Bentz  
Major - Agricultural Business



26 - STEVE POWERS  
Rockford, Ill.  
Coach - Bob Pellant  
Major - Physical Education

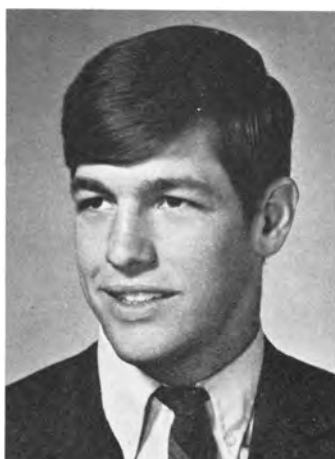


16 - BILL REDING  
Algona, Iowa  
Coach - Bernard Cooper  
Major - Journalism

57 - KEITH SCHROEDER  
Davenport, Iowa  
Coach - Bob Liddy  
Major - Physical Education



96 - SCOTT SEELIGER  
Madison, Wis.  
Coach - Otto Breitenbach  
Major - History



38 - VERN SKRIPSKY  
Cedar Rapids, Iowa  
Coach - William (Bud) Rainbow  
Major - Electrical Engineering



83 - ROY SNELL  
Canton, Ohio  
Coach - Ron Chisniak  
Major - History



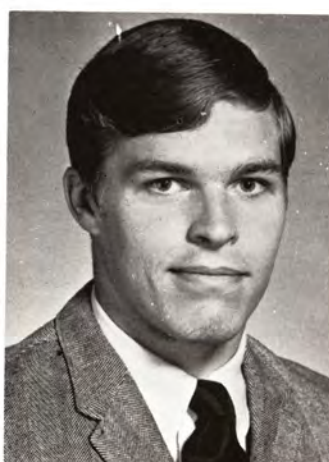




12 - BRADD STECKMESSER  
Manitowoc, Wis.  
Coach - Bill Twichell  
Major - Industrial Engineering



85 - OTTO STOWE  
Springfield, Ill.  
Coach - John McCoy  
Major - Physical Education



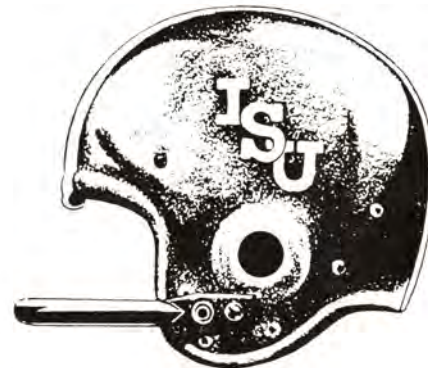
62 - STEVE STROUP  
Butler, Pa.  
Coach - Art Bernardi  
Major - Industrial Education



52 - TERRY SUTTON  
Missouri Valley, Iowa  
Coach - Al McAvoy  
Major - Physical Education



34 - MIKE TERRIZZI  
Hawthorne, N.J.  
Coach - Al Rotella  
Major - Physical Education



## CYCLONES

67 - JOE TOMAK  
Youngstown, Ohio  
Coach - Red Angelo  
Major - Physical Education

41 - JOHN USMIAL  
Muskegon, Mich.  
Coach - Roger Chiaverini  
Major - Physical Education

88 - BRUCE VAN LANGEN  
Omaha, Neb.  
Coach - Al Salerno  
Major - Industrial Education

14 - OBERT TISDALE  
Waterloo, Iowa  
Coach - Howard Vernon  
Major - Sociology







91 - ANDY WALLER  
Poynette, Wis.  
Coach - Walt Schonherr  
Major - Urban Planning



43 - STEVE WARDLAW  
Abbeville, S.C.  
Coach - Ron Davis  
Major - Physical Education



13 - TONY WASHINGTON  
Dearborn, Mich.  
Coach - Hal Huldowney  
Major - Physical Education



81 - CHUCK WILKINSON  
Chicago, Ill.  
Coach - Jim Guzzo  
Major - Industrial Administration



# CYCLONES

31 - BOB WILLIAMS  
Omaha, Neb.  
Coach - Bill Hoyt  
Major - History, Government

55 - MARK WITHROW  
Edina, Minn.  
Coach - Steve Canakes  
Major - Architecture

11 - TOM WOOLWINE  
Wilmington, Ill.  
Coach - Gordon Gillespie  
Major - Mathematics







**'70 Chevelle SS.  
We made our tough one even tougher.**

Barbara Specht, NCAA College Football Queen, with Chevelle SS Sport Coupe.



# IOWA STATE UNIVERSITY FOOTBALL ROSTER

No.	Name and Position	Hgt.	Wgt.	Age	Class	Home Town
10	RON GATTONE, d-s	6-0	178	19	Soph	Temple, Pa.
11	TOM WOOLWINE, o-qb	5-10	165	19	Soph	Wilmington, Ill.
12	BRADD STECKMEYER, o-e	6-2	197	19	Soph	Manitowoc, Wis.
13	*TONY WASHINGTON, d-s	6-1	175	20	Junior	Dearborn, Mich.
14	*OBERT TISDALE, o-qb	6-2	192	20	Junior	Waterloo, Iowa
16	BILL REDING, o-qb	6-3	191	20	Soph	Algona, Iowa
17	MIKE FONTANINI, o-qb	5-11	184	19	Soph	Des Moines, Iowa
18	DOUG PARSONS, o-qb	6-1	198	19	Soph	Des Moines, Iowa
19	STEVE JACOBSEN, d-s	6-3	196	19	Soph	Harlan, Iowa
20	BOB DWYER, o-tb	6-1	191	19	Soph	Lansing, Ill.
21	*JEFF ALLEN, o-wb	6-0	185	21	Junior	Chicago, Ill.
22	RALPH BARACZ, d-hb	6-0	176	20	Junior	Cleveland, Ohio
24	MIKE PALMER, o-tb	5-10	191	20	Junior	Steubenville, Ohio
25	RAY COLEMAN, o-wb	6-2	190	21	Junior	Waukegan, Ill.
26	*STEVE POWERS, d-lb	6-1	205	20	Junior	Rockford, Ill.
28	*TOM HILDEN, d-hb	6-0	184	20	Junior	Glencoe, Ill.
29	*TOM ELLIOTT, d-hb	5-11	182	20	Senior	Swea City, Iowa
31	*BOB WILLIAMS, d-m	5-11	180	20	Junior	Omaha, Neb.
32	**LARRY HOLTON, d-hb	6-0	176	21	Senior	Keokuk, Iowa
33	DENNIS MC DONALD, o-tb	6-1	199	19	Soph	Morning Sun, Iowa
34	MIKE TERRIZZI, o-fb	6-2	213	21	Soph	Hawthorne, N.J.
35	RAY COFFEY, o-fb	5-10	186	21	Senior	Humeston, Iowa
37	BRUCE BEERMAN, o-fb	5-10	185	20	Soph	Demarest, N.J.
38	*VERN SKRIPSKY, k	6-2	210	20	Senior	Cedar Rapids, Iowa
39	DON MC LAUGHLIN, d-hb	6-3	189	20	Junior	White Plains, N.Y.
40	*BOB BROUILLETTE, k	6-2	208	21	Senior	Sioux City, Iowa
41	JOHN USMIAL, d-hb	6-0	172	21	Soph	Muskegon, Mich.
43	STEVE WARDLAW, d-m	5-10	186	20	Soph	Abbeville, S.C.
44	*JOCK JOHNSON, o-fb	6-0	197	20	Junior	Des Moines, Iowa
45	*JERRY FIAT, d-lb	6-0	180	20	Senior	Oak Lawn, Ill.
47	TOM PADJEN, o-e	6-2	200	19	Soph	Lansing, Ill.
48	WILLIE HARRIS, o-fb	6-3	192	22	Junior	Muskegon, Mich.
49	*STEVE KARBEL, d-m	6-0	186	19	Junior	Grand Junction, Iowa
50	*WAYNE BESKE, o-c	6-1	235	22	Senior	Minneapolis, Minn.
51	DENNIS PELISK, o-g	6-0	200	19	Soph	Cedar Rapids, Iowa
52	TERRY SUTTON, o-c	6-1	183	21	Soph	Missouri Valley, Iowa
53	KEN CARATELLI, o-c	6-1	205	19	Soph	Oak Park, Mich.
54	GARY FRASER, o-c	6-1	211	19	Soph	Allen Park, Mich.
55	*MARK WITHROW, d-lb	6-1	198	20	Junior	Edina, Minn.
56	*JERRY BOYINGTON, d-t	6-2	216	20	Junior	Clarion, Iowa
57	KEITH SCHROEDER, d-lb	6-0	206	20	Soph	Davenport, Iowa
58	BOB MATEY, d-ng	6-0	216	19	Soph	Youngstown, Ohio
59	MIKE LORBER, d-lb	6-1	198	20	Junior	Independence, Iowa
60	ROGER CARLSON, o-t	6-1	227	19	Soph	Oak Park, Ill.
61	ELVE EVERAGE, o-g	6-0	206	20	Soph	Alton, Ill.
62	STEVE STROUP, o-g	6-3	204	20	Soph	Butler, Pa.
63	*MIKE BLISS, o-g	6-0	202	21	Senior	Ames, Iowa
64	*BILL EASTER, o-g	6-0	200	20	Junior	Moline, Ill.
65	*JOHN GRIGLIONE, d-t	6-2	212	21	Junior	Des Moines, Iowa
66	*FRED JONES, d-ng	6-1	208	21	Senior	Minneapolis, Minn.
67	JOE TOMAK, o-g	6-1	194	18	Soph	Youngstown, Ohio
68	DOUG LOGUE, d-e	6-0	197	19	Soph	Fort Dodge, Iowa
69	BOB BANGER, d-e	6-0	199	19	Soph	Des Plaines, Ill.
70	MIKE ASHTON, o-t	6-5	237	19	Soph	Clinton, Iowa
71	BOB BOGNAR, d-e	6-1	207	19	Soph	Hammond, Ind.
72	BOB MARTINSON, d-ng	5-11	202	20	Soph	Bemidji, Minn.
73	JOE MARCONI, o-t	6-1	217	19	Soph	Chicago Heights, Ill.
74	*CRAIG BOLLER, d-t	6-1	225	21	Senior	Belmond, Iowa
76	JIM CROW, o-t	6-1	212	19	Soph	St. Louis, Mo.
77	*TIM JEFFRIES, o-t	6-4	234	20	Junior	Marshalltown, Iowa
78	*JERRY BERNA, o-g	6-1	220	20	Junior	Chicago, Ill.
79	*TOM BARNES, o-t	6-4	238	21	Junior	Antigo, Wis.
80	*TOM LORENZ, o-e	6-3	212	20	Junior	Reinbeck, Iowa
81	*CHUCK WILKINSON, d-e	6-1	194	20	Junior	Chicago, Ill.
82	*MIKE KIRAR, d-e	6-2	205	20	Senior	Peru, Ill.
83	*ROY SNELL, o-e	6-1	193	20	Junior	Canton, Ohio
84	JOHN MORIARTY, d-t	6-3	217	19	Soph	Lynn, Mass.
85	*OTTO STOWE, o-e	6-2	181	20	Junior	Springfield, Ill.
86	JOHN KELLY, d-e	6-1	197	20	Soph	Des Moines, Iowa
87	*GREG DUKSTEIN, o-e	6-0	171	22	Senior	Allen Park, Mich.
88	BRUCE VAN LANGEN, o-c	6-3	220	19	Soph	Omaha, Neb.
89	DICK KOHLER, o-e	5-11	174	19	Soph	Melrose Park, Ill.
90	*TOM POTTER, d-e	6-4	210	20	Junior	Sheldon, Iowa
91	*ANDY WALLER, d-t	6-2	220	20	Junior	Poynette, Wis.
93	RAY HARM, o-t	6-3	222	20	Soph	Closter, N.J.
94	GEORGE GAN, d-t	6-4	217	20	Soph	Hackensack, N. J.
95	DICK MULLER, d-t	6-4	244	20	Junior	Algona, Iowa
96	SCOTT SEELIGER, o-e	6-2	204	19	Soph	Madison, Wis.
97	TIM CONNOR, d-t	6-0	202	20	Soph	Morris, Ill.
98	DAVE JAHNKE, d-lb	6-2	198	19	Soph	Iowa City, Iowa
99	LES MITCHELL, d-hb	6-1	183	19	Soph	Cleveland, Ohio

\* letterman



# CHANGE IS IN THE WIND

Shaped in a wind tunnel...  
Refined by the wind  
at Daytona, Riverside, and Darlington.  
Wind-shaped. Aerodynamic. Made to move.



## 1970 FORD TORINO

The most completely changed new cars of the year—Torino. New size. Longer. Lower. Wider. Quick and quiet. New shape. Shaped in a wind tunnel for a new, low-drag silhouette.

Torino Brougham. Here's the one that has it all. Distinctive new grille with Hideaway Head-

lamps. New interiors to surround you with luxury. More luxurious than any other car in its class. Top performance from a choice of five new V-8's, including the super efficient 351-cu. in. 4V. Top it all off with a glamorous vinyl-covered roof. Torino Brougham—sweeping its class.

### 1970 Torino Brougham 2-Door

More luxurious than any other car in its class. One of the 13 new 1970 Torino models—the most completely changed new cars of the year.

TORINO





Things  
go better  
with Coke.

TRADE-MARK ®





# OFFENSE

24	MIKE PALMER	LE
79	TOM BARNES	LT
63	MIKE BLISS	LG
50	WAYNE BESKE	C
78	JERRY BERNA	RG
77	TIM JEFFRIES	RT
85	OTTO STOWE	RE
17	MIKE FONTANINI	QB
33	DENNIS McDONALD	TB
21	JEFF ALLEN	WB
44	JOCK JOHNSON	FB

# DEFENSE

70	LARRY BROWN	LE
71	JIM BAILEY	LT
74	AL JAKOBCIC	MG
79	KARL SALB	RT
87	STEVE CARMICHAEL	RE
50	KENNY PAGE	LLB
60	EMERY HICKS	RLB
19	DALE HOLT	LH
15	JIM HATCHER	RH
51	STEVE ROACH	M
25	KEITH LIEPPMAN	S

## IOWA STATE

### DEFENSE

82	MIKE KIRAR	LE
65	JOHN GRIGLIONE	LT
66	FRED JONES	RT
91	ANDY WALLER	RE
55	MARK WITHROW	LLB
57	KEITH SCHROEDER	MLB
45	JERRY FIAT	RLB
29	TOM ELLIOTT	LH
32	LARRY HOLTON	RH
31	BOB WILLIAMS	M
13	TONY WASHINGTON	S

### OFFENSE

81	GEORGE McGOWAN	LE
77	BOBBY CHILDS	LT
67	DAVE AIKINS	LG
55	DALE EVANS	C
63	JOHN WEIR	RG
78	STEVE LAWSON	RT
88	JOHN MOSIER	RE
11	JIMMY ETTINGER	QB
32	JOHN RIGGINS	TB
23	RON JESSIE	WB
45	MIKE REEVES	FB

### IOWA STATE SQUAD

10	Gattone, ds	58	Matey, d-ng
11	Woolwine, o-qb	59	Lorber, d-lb
12	Steckmesser, o-e	60	Carlson, o-t
13	Washington, d-s	61	Everage, o-g
14	Tisdale, o-qb	62	Stroup, o-g
16	Reding, o-qb	63	Bliss, o-g
17	Fontanini, o-qb	64	Easter, o-g
18	Parsons, o-qb	65	Griglion, d-t
19	Jacobsen, d-s	66	Jones, d-ng
20	Dwyer, o-tb	67	Tomak, o-g
21	Allen, o-wb	68	Logue, d-e
22	Baracz, d-hb	69	Banger, d-e
24	Palmer, o-tb	70	Ashton, o-t
25	Coleman, o-wb	71	Bognar, d-e
26	Powers, d-lb	72	Martinson, d-ng
28	Hilden, d-hb	73	Marconi, o-t
29	Elliott, d-hb	74	Boller, d-t
31	Williams, d-m	76	Crow, o-t
32	Holt, d-hb	77	Jeffries, o-t
33	McDonald, o-tb	78	Berna, o-g
34	Terrizzi, o-fb	79	Barnes, o-t
35	Coffey, o-fb	80	Lorenz, o-e
37	Beerman, o-fb	81	Wilkinson, d-e
38	Skripsky, k	82	Kirar, d-e
39	McLaughlin, d-hb	83	Snell, o-e
40	Brouillette, k	84	Moriarty, d-t
41	Usmial, d-hb	85	Stowe, o-e
43	Wardlaw, d-m	86	Kelly, d-e
44	Johnson, o-fb	87	Dukstein, o-e
45	Fiat, d-lb	88	Van Langen, o-c
47	Padjen, o-e	89	Kohler, o-e
48	Harris, o-fb	90	Potter, d-e
49	Karber, d-m	91	Waller, d-t
50	Beske, o-c	93	Harm, o-t
51	Pelisek, o-g	94	Gan, d-t
52	Sutton, o-c	95	Muller, d-t
53	Caratelli, o-c	96	Seeliger, o-e
54	Fraser, o-c	97	Connor, d-t
55	Withrow, d-lb	98	Jahnke, d-lb
56	Boyington, d-t	99	Mitchell, d-hb
57	Schroeder, d-lb		

### KANSAS SQUAD

10	Basler, qb	54	Standage, c
11	Ettinger, qb	55	Evans, c
13	Patchen, db	56	Gorbett, ot
15	Hatcher, db	57	Gosa, ot
17	Mears, db	58	Boreland, dg
18	Underwood, db	59	Hauser, og
19	Holt, db	60	Hicks, lb
20	Shideler, oe	61	Sullivan, dt
21	Hertel, db	62	Clinger, dt
22	Bill, db	63	Weir, og
23	Jessie, tb	64	Scanlon, de
25	Lieppman, db	65	Sweatman, dg
26	James, db	67	Aikins, og
27	Geraghty, db	68	Wilhelm, dg
28	Jukes, tb	69	O'Malley, dt
30	Maher, fb	70	Brown, de
31	Conley, wb	71	Bailey, dt
32	Riggins, fb	72	Dahl, ot
33	Schmidt, fb	73	Gaughan, ot
35	Rucker, fb	74	Jakobcic, dg
37	Doyle, de	75	Knop, og
38	Wempe, lb	76	Mitchell, dt
40	Amison, wb	77	Childs, ot
43	Fortier, lb	78	Lawson, ot
44	White, oe	79	Salb, dt
45	Reeves, tb	80	Natsues, oe
46	Hale, lb	81	McGowan, db
47	Harris, lb	82	Martindale, oe
48	Norwald, og	85	Davenport, de
49	Wachs, ot	86	Garrett, wb
50	Page, lb	87	Carmichael, de
51	Roach, lb	88	Mosier, oe
52	Crowley, c	89	Tyus, de
53	Cooper, lb	100	Bell, k





Valiant Duster 340

Plymouth GTX



Dodge Challenger



Dodge Charger 500



Plymouth Barracuda

**OUR  
SPORTS PROGRAM  
FOR  
THIS SEASON**

Chrysler weather has arrived. Falling leaves take off on the wind—and our 1970 Chrysler Corporation lineup takes the field.

For a starter, Plymouth 1970 makes it with the Rapid Transit System: The fabulous Barracuda Series. Valiant Duster 340. And the imperturbable Plymouth GTX.

Or you could be Dodge material. Find out

with a run in the cars with the bumblebee stripe: The Challenger. Charger 500. Dart Swinger 340. Coronet Super Bee.

The loaded lineup. Performance on wheels, waiting for the moment you take over.

And while you're thinking about it—relax, sit back and enjoy the game.



**CHRYSLER  
CORPORATION**

Plymouth • Dodge • Chrysler • Imperial • Dodge Trucks • Simca • Sunbeam



# THE UNIVERSITY OF KANSAS FOOTBALL ROSTER

No.	Name and Position	Hgt.	Wgt.	Age	Class	Home Town
10	PHIL BASLER, qb	6-3	212	19	Soph	Independence, Mo.
11	*JIM ETTINGER, qb	6-2	188	21	Senior	Bartlesville, Okla.
13	MIKE PATCHEN, db	5-11	183	19	Soph	Stubenville, Ohio
15	*JIM HATCHER, db	6-1	175	25	Senior	Washington, D.C.
17	JOHN MEARS, db	6-0	135	23	Junior	Bakersfield, Calif.
18	DOUG UNDERWOOD, db	6-1	171	19	Soph	Ottawa, Kan.
19	*DALE HOLT, db	5-10	188	20	Junior	Enid, Okla.
20	JOE SHIDELER, oe	6-2	181	19	Soph	Ashland, Ohio
21	DICK HERTEL, db	6-1	178	18	Soph	Shawnee Mission, Kan.
22	LARRY BILL, db	6-2	191	21	Soph	Wichita, Kan.
23	RON JESSIE, tb	6-2	181	21	Junior	Yuma, Ariz.
25	KEITH LIEPPMAN, db	6-1	201	20	Junior	Kansas City, Mo.
26	*SKIP JAMES, db	6-0	186	19	Junior	Shawnee Mission, Kan.
27	MARK GERAGHTY, db	5-8	168	18	Soph	Shawnee Mission, Kan.
28	JIMMY JUKES, tb	6-2	205	21	Soph	Fairfax, Va.
30	JIM MAHER, fb	6-0	211	20	Soph	Shawnee Mission, Kan.
31	STEVE CONLEY, wb	6-3	197	20	Soph	Arlington Heights, Ill.
32	*JOHN RIGGINS, fb	6-2	232	20	Junior	Centralia, Kan.
33	CHUCK SCHMIDT, fb	6-0	192	19	Soph	Hays, Kan.
35	RICH RUCKER, fb	5-11	195	20	Junior	Olympia, Wash.
37	TOM DOYLE, de	6-0	194	20	Soph	Kansas City, Kan.
38	STEVE WEMPE, lb	5-11	187	19	Soph	Lawrence, Kan.
40	WILLIE AMISON, wb	5-10	172	21	Junior	Sandusky, Ohio
43	*DICK FORTIER, lb	5-11	193	23	Senior	Bemidji, Minn.
44	XERK WHITE, oe	6-2	194	20	Junior	Taipei, Taiwan
45	**MIKE REEVES, tb	6-1	208	21	Senior	Concordia, Kan.
46	RICK HALE, lb	6-0	187	19	Soph	Belton, Mo.
47	JOHN HARRIS, lb	5-11	186	20	Soph	Chicago, Ill.
48	ROY NORWALD, og	5-11	203	18	Soph	Mexico, Mo.
49	BILL WACHS, ot	6-2	227	19	Junior	Independence, Kan.
50	KENNY PAGE, lb	6-2	203	19	Soph	Dodge City, Kan.
51	STEVE ROACH, lb	6-2	202	19	Soph	Raytown, Mo.
52	GREG CROWLEY, c	6-1	212	19	Soph	Excelsior Springs, Mo.
53	GARY COOPER, lb	6-1	215	19	Soph	Spring Valley, Calif.
54	DAVE STANDAGE, c	6-5	211	21	Junior	Oklahoma City, Okla.
55	**DALE EVANS, c	6-1	222	21	Senior	Russell, Kan.
56	MIKE GORBETT, ot	6-3	230	20	Soph	Cleveland, Ohio
57	BILL GOSA, ot	6-6	229	20	Soph	East St. Louis, Ill.
58	MIKE BORELAND, dg	6-0	203	19	Soph	Chillicothe, Ohio
59	NILES HAUSER, og	6-2	208	19	Soph	Ellinwood, Kan.
60	**EMERY HICKS, lb	6-0	235	22	Senior	Nowata, Okla.
61	MIKE SULLIVAN, dt	6-0	218	20	Soph	Elmwood Park, Ill.
62	JOHN CLINGER, dt	6-1	231	19	Soph	Rose Hill, Kan.
63	*JOHN WEIR, og	6-0	211	21	Senior	Lombard, Ill.
64	TIM SCANLON, de	6-2	212	21	Junior	Kansas City, Mo.
65	BILL SWEATMAN, dg	6-0	201	19	Soph	Kansas City, Mo.
67	*DAVE AIKINS, og	6-3	234	21	Senior	Erie, Kan.
68	STEVE WILHELM, dg	6-2	236	20	Junior	Los Altos, Calif.
69	KEVIN O'MALLEY, dt	6-1	229	20	Soph	Cleveland, Ohio
70	*LARRY BROWN, de	6-5	213	20	Junior	Starke, Fla.
71	*JIM BAILEY, dt	6-5	243	21	Senior	Kansas City, Mo.
72	**GRANT DAHL, ot	5-10	212	22	Senior	Winnetka, Ill.
73	TOM GAUGHAN, ot	6-2	230	20	Soph	Chicago, Ill.
74	*AL JAKOBCIC, dg	6-1	220	22	Senior	Upland, Calif.
75	DOUG KNOP, og	6-2	239	22	Senior	Olathe, Kan.
76	BRUCE MITCHELL, dt	6-6	287	21	Soph	Hyattsville, Md.
77	BOB CHILDS, ot	6-3	250	19	Soph	Smyrna, Ga.
78	*STEVE LAWSON, ot	6-3	251	20	Junior	Chicago, Ill.
79	*KARL SALB, dt	6-4	275	20	Junior	Crossett, Ark.
80	STEVE NATSUES, oe	6-1	197	19	Junior	Fresno, Calif.
81	*GEORGE MCGOWAN, db	6-2	182	21	Senior	Glendale, Calif.
82	CRAIG MARTINDALE, oe	6-2	182	21	Junior	Bartlesville, Okla.
85	GARY DAVENPORT, de	6-1	197	20	Junior	Wellsville, Kan.
86	GEORGE GARRETT, wb	5-11	185	20	Junior	Sandusky, Ohio
87	*STEVE CARMICHAEL, de	6-3	237	21	Junior	Mulvane, Kan.
88	**JOHN MOSIER, oe	6-4	222	21	Senior	Wichita, Kan.
89	BOB TYUS, de	6-5	277	21	Junior	Kansas City, Mo.
100	**BILL BELL, k	6-1	191	21	Senior	Falls Church, Va.

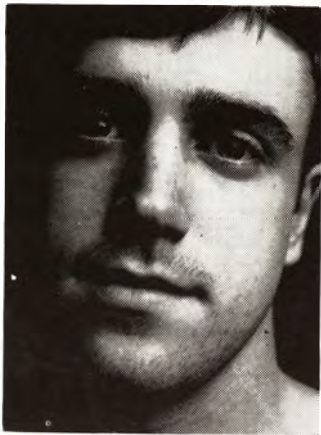
\* lettermen



# Break your beard in right.

Right now your beard is in the formative stage.

You can shave it with a razor blade like your father does. And each time you do your beard will grow back a little more difficult. Until one day shaving's no longer a chore. It's an agony.



Look no further than your father's face for proof.

But fortunately, you're catching your beard at an early age. You can break it in to be just as shaveable 10 and 20 years from now as it is today.

With a REMINGTON® *Lektro Blade* shaver.

And if you think the kind of shave we're selling won't be close enough for you, you're wrong.

Our new Lektro Blade shaver has very sharp disposable blades. Just like a razor. So it gives very close shaves. Just like a razor.

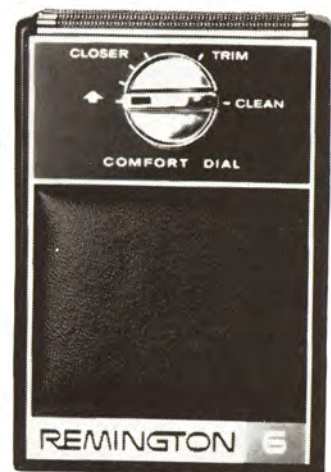
What's more, you can dial a Lektro Blade shaver into a sideburn trimmer.

Admittedly, it costs more to buy our electric shaver than a razor and some blades.

But it's a good investment.

These next few years will determine how you and your beard will get along for the rest of your lives.†

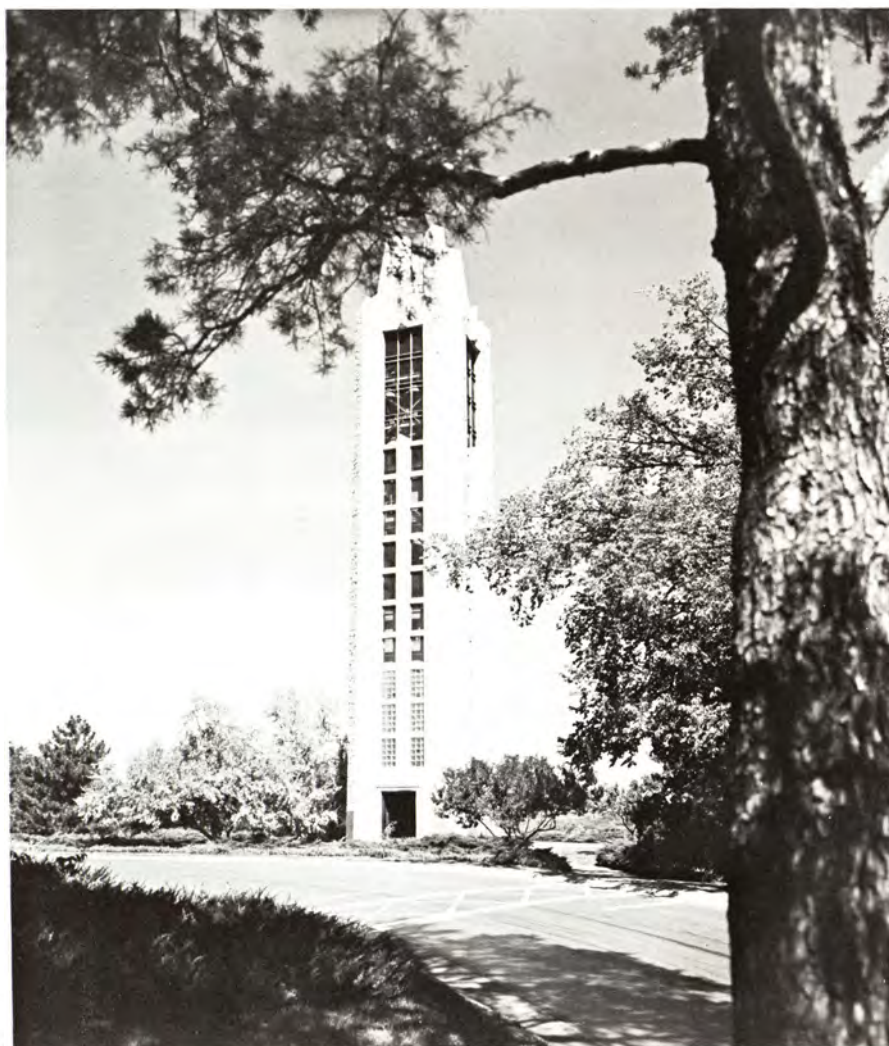
SPERRY RAND® LEKTRO BLADE: TRADEMARK OF SPERRY RAND CORP. ©1969 S. R.



**REMINGTON**  
ELECTRIC SHAVEN DIVISION, BRIDGEPORT, CONNECTICUT.



# About the University of Kansas



About the University of Kansas.

The University of Kansas serves nearly 18,000 resident students at its main campus of more than 700 acres in Lawrence and at the KU Medical Center in Kansas City, Kan. Through correspondence and extension class divisions many more are enrolled in part-time study.

Twelve schools with more than 70 teaching departments comprise the University. The schools are: Graduate, College of Liberal Arts and Sciences, Business, Education, Engineering, Fine Arts, Journalism, Law, Medicine, Pharmacy, Architecture and Urban Design and the School of Social Work.

KU opened its doors in September, 1866, to 29 men and 20 women, making it only the third state university accepting the principle of co-education. The act organizing the University was passed by the legislature of 1864, but not until the following year—with the Civil War ended—was \$20,000 raised for a building. The money came chiefly from Quantrill relief funds which had been sent to Lawrence.

The home selected for the University was Mount Oread, a ridge several miles long between two valleys carved out of geologic time by the Kaw and Wakarusa rivers. A group of New Englanders gave Mount Oread its name, likening it to the site of Oread Institute in Massachusetts, which occupied a similar commanding view of its town.

The first man to occupy the position of Chancellor was the Rev. R. W. Oliver, but the first Chancellor in the sense of the president of the faculty was General John Fraser. When he was elected in 1867 enrollment was 105 students.

KU's 11th chancellor, Dr. Laurence Chalmers, became head of the University July 1, 1969, succeeding Dr. W. Clarke Wescoe, who held the position for nine years.



# KANSAS

## FOOTBALL COACHING STAFF



PEPPER RODGERS  
Head Coach



JOHN COOPER



TERRY DONAHUE



DON FAMBROUGH



CHARLIE McMULLERS



FLOYD TEMPLE



DICK TOMEY



LARRY TRAVIS



DOUG WEAVER





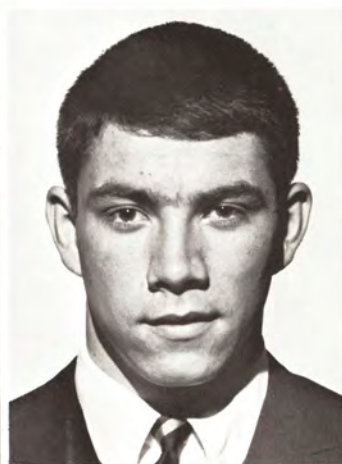
DAVE AIKINS



WILLIE AMISON



JIM BAILEY



BILL BELL



LARRY BROWN



STEVE CARMICHAEL

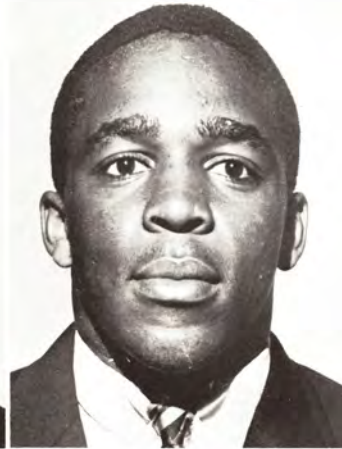


GRANT DAHL

JIM ETTINGER

DALE EVANS

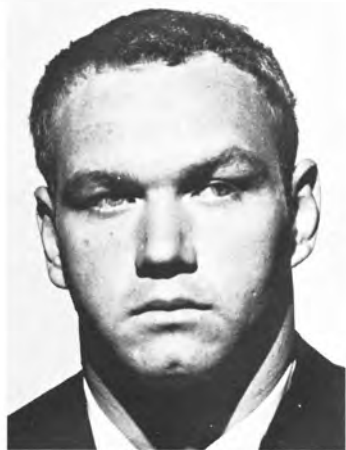
DALE HALT







JIM HATCHER



AL JAKABEIC



SKIP JAMES



RON JESSIE



STEVE LAWSON



CRAIG MARTINDALE

MIKE McCAY

GEORGE McGOWAN

JOHN MOSIER

KENNY PAGE







MIKE REEVES



JOHN RIGGINS



RICH RUCKER



CARL SALB

CHUCK SCHMIDT



DAVE STANDAGE



OFFICIAL  
WATCH  
FOR THIS  
GAME  
LONGINES

THE WORLD'S MOST HONORED WATCH®



Ultra-Chron #8214, automatic calendar, 10k gold filled case and link bracelet, \$185.

# ULTRA-CHRON

THE WORLD'S MOST ACCURATE WATCH

Guaranteed accurate to a minute  
a month\*

**Requires no batteries**

Unaffected by gravitational field...  
therefore, not sensitive  
to change of position

**Fully automatic**

Superior protection against water,  
dust, shock, magnetism

**Thinner movement,**

## Extraordinary reliability

Tells date, hour, minute, second

Longines, only watch  
ever to win 10 World's  
Fair Grand Prizes  
and 28 Gold Medals.



\*Your Longines-Wittnauer Franchised Jeweler will adjust your Ultra-Chron to this accuracy, if necessary. Guarantee is for one year.

LONGINES

LONGINES-WITTMANER WATCH COMPANY

Longines-Wittnauer Building, New York



Some like it hot.

Some like it cold.



### Frontier likes both.

The sun spots.  
Tucson, Phoenix, Las Vegas.  
Winter sports spots for skiing,  
tobogganing, ice skating,  
and snowmobiling.  
Frontier can fly you to them all.  
And Frontier's Family Plan lets you  
take the family at big savings.  
Every day of the week.  
Or go in a group  
with savings up to 30%.  
Call your  
Travel Agent or Frontier.

**FRONTIER AIRLINES**  
a better way to fly







## CY'S FAVORITE ALUM

AL HAGEN, Ag. and Sci. '35, Des Moines

He is general manager of the American Dairy Association of Iowa and the Iowa Dairy Industry Commission, a position he has held since 1954. Formerly, he was with the ISU extension service and the Iowa Farm Bureau Federation. He is a member of the Dairy Society International, Dairy Shrine Club, Iowa Society of Association Executives, and the Greater Des Moines Chamber of Commerce where

he is a member of the Board of Directors and chairman of the Agricultural Department. He is a member of Gamma Sigma Delta agricultural honor society, and in 1965 received the outstanding alumnus citation from his fraternity, Alpha Gamma Rho. Just a month ago, he completed service as president of the national organization of state dairy association managers. His alumni activities include past presidency of the Des Moines Cyclone Club, member of the ISU Century Club, and member of the Alumni Association Executive Committee for six years and presently serves as President of the Association. He and his wife, Margaret, have a daughter, Janice, who lives in Denver.



# Bouquets and Thanks

To the many sub-committee members who have spent endless hours making today's Homecoming observance a success. From Bob O'Dougherty, left, and Brian Sugden, right, Homecoming co-chairmen.



ALUMNI RELATIONS: Jerv Schooner, Chm.; Tana Deede, Events; Kathy Giessing, Correspondence; ATHLETIC EVENTS: Bob Benson,

Chm.; Debbie Clifford and Nancy Wehnes, Game Dec.; John Evans, Game Ceremonies; Debbie Pluister and Steve Swenson, Con-

tests; Jeff Leigh, Pep Rally; BUSINESS: Gordy, Schaller, Chm.; Lynn Wagner, Ass't.; COORDINATOR: Dwight Kasperbauer, Chm.; Dick Denning, Ass't.; Ron Danielson, Properties; Mike Shields, Personnel; ENTERTAINMENT: Craig Foss, Chm.; Margie Keller and Carolyn Kimberly, Dance; Paul Longman, Jazzboree; Dennis Morman, Concert; LAWN DECORATIONS: Randy Howard, Chm.; Tom Connard, Displays Coordinator; Doug Lovejoy and Jay Hutchison, Cost Eval.; Jim Severin, Displays & Judging; PEP BARBEQUE: Mary Anne Maurer and Dave Brown, co-chairmen; Jo Beling and Becky Lewis, Food; Jack Feldman, Technical; Ben Miehle, Art; Debbie Brown, Program; PUBLICITY: Bill Backman and Jana Johnson, Co-Chm.; Jim Nelson and Bill Hanser, Art; Marsha Lovaas and Bobbie Bobzien, Promotions; Dave Schroeder, Distributions; Ann Cooper and Adriane Charlton, Newspaper-Magazine; Lindy Buck and Dave Fincham, Radio-T.V.; QUEENS: Jan Ellison, Chm.; Kathy Munger and Barb Lamison, Teas; Linda Mainquist and Kay Covey, Q. Review; Sally Patstian and Louise Elmquist, Art & Set; Debb Sharpneck, Elections; Joe Stanley, Presentations; SALES: Carl Esbeck, Chm.; Rene Roze Button Sales; Gary Streit, Ticket Sales; SE RETARY: Debbie Zack, Gen. Sec.; Carol Campbell, Carolyn Harris, Linda Schakel, and Si Weih, Secretaries.

TIM JEFFERIES  
Marshalltown - Junior

## ALLEN MOTOR COMPANY

YOUR ONE-STOP CENTER  
FOR NEW CHEVROLETS,  
USED CARS, PARTS  
AND AUTHORIZED SERVICE

5th & DOUGLAS • AMES • PHONE 232-2462



BILL EASTER  
Moline, Ill. - Junior

## Bledsoe's

FIRST IN QUALITY —  
FIRST IN FASHION

MAIN AND BURNETT DOWNTOWN  
120 WELCH CAMPUSTOWN



TONY WASHINGTON  
Dearborn, Mich. - Junior



- ☆ UNIFORMLY PERFECT U.S.D.A.  
CHOICE STEAKS
- ☆ DINING ROOM
- ☆ FREE PARKING

HIGHWAY 30 WEST  
OPEN 11 a.m.-9 p.m. PHONE 292-4033

MARK WITHROW  
Edina, Minn. - Junior

## BYERS Office Equipment Company

COMPLETE SELECTION OF SHAW-WALKER  
& H.O.N. DESKS - CHAIRS - FILES  
417 MAIN STREET • AMES • PHONE 232-2050





# Which One Is The Queen?

Since Iowa State University's Homecoming Queen for 1969 was named after the Cyclone Football Program deadline, we are presenting here the five finalists.

One of them will be the Queen. Listen for the announcement from the field public address system, then, find the Queen on this page.



KATHY CASE  
LaPorte, City, Iowa  
English and Speech Sophomore  
Sponsored by Alpha Gamma Rho



SUE DOERING  
Brookfield, Wis.  
Home Economics Journalism Sophomore  
Sponsored by Kappa Alpha Theta



SUE GORDINIER  
Rochester, Minn.  
Applied Art Interior Design Sophomore  
Sponsored by Pi Kappa Phi



LAURA McQUOWN  
Red Oak, Iowa  
Applied Art Interior Design Senior  
Sponsored by Alpha Sigma Phi



JOYCE ANN STOUT  
Chariton, Iowa  
Psychology Sophomore  
Sponsored by Fulmer House



# Hundreds of thousands of lucky fans are watching faster, safer football every weekend this year.

## On Astro Turf,<sup>®</sup> Monsanto's amazing nylon field.



Even the best natural turf fields can't give players and fans—as well as schools, colleges and cities—all the advantages of AstroTurf. Here's why:

### **Better-than-grass footing.**

The Astro Turf field gives your team faster, surer footing—rain, sleet or shine. Players can cut sharper, run faster. Kickers can concentrate on the kick without worrying about footing. And quarterbacks can get set faster, and pass better—and they can see their receivers more clearly.

### **No mud. Ever.**

Nylon AstroTurf can't turn to mud. Even if it rains buckets, your team

has the footing to play fast, precision football—and keep on passing. Another advantage of the mudproof field: you'll always be able to tell who's who, because uniforms stay clean and bright all game long.

### **Fewer injuries.**

Player's cleats can't lock in AstroTurf so player's feet are free to move when hit, eliminating the twists and wrenches responsible for most knee and ankle injuries. And with fewer injuries, there are fewer time outs to delay your game. AstroTurf helps take the crunch out of hard falls, too. With a thick shock-absorbing pad just underneath the

layer of grasslike AstroTurf nylon. Sure, there are some injuries on AstroTurf, but not as many.

### **Tremendous stamina.**

An AstroTurf field can be used 24 hours a day, 7 days a week. For lots of things besides football, too. This can mean great dollar savings for schools, colleges and cities faced with a growing land squeeze. AstroTurf can take all you can dish out.

### **Amazing AstroTurf.**

Maybe your school will have it soon. Want more information? Write Monsanto, AstroTurf, Dept. D, 800 N. Lindbergh Blvd., St. Louis, Mo. 63166.

**AstroTurf**<sup>®</sup>  
RECREATIONAL SURFACES BY  
**Monsanto**





CRAIG BOLLER  
Belmond - Senior

## H & F REALTY

COMPLETE REAL ESTATE SERVICE  
GLEN LOWMAN 232-8680  
MERLE DALEY 232-7526  
LUCILLE E. UBBEN 232-7293  
DEAN HUNZIKER 292-3011  
NORTH GRAND SHOPPING CENTER  
803 24th ST. 232-4214



TOM BARNES  
Antigo, Wis. - Junior

## GUY'S RESTAURANT and Lounge

NEXT TO TRAVELODGE

- ☆ CHOICE PRIME STEAKS
- ☆ HICKORY SMOKED RIBS
- ☆ LOBSTER & SEA FOODS
- ☆ CAPN'S "QUARTERS" LOUNGE

YOUR HOSTS: DOROTHY & GUY HORNADAY  
217 SOUTH DUFF • AMES • PHONE 232-0317

ROGER ASHLAND  
Clear Lake, Iowa - Junior



## World Wide Travel Center Inc.

AIRLINE • STEAMSHIP • RAILROAD • TICKETS • TOURS • INSURANCE  
CAR RENTALS • HOTEL RESERVATIONS

103 Welch Avenue  
AMES, IOWA 50010

## WORLD'S LARGEST MANUFACTURER OF SAND, GRAVEL, STONE & ORE WASHING EQUIPMENT

- DREDGING EQUIPMENT
- CLAY WORKING EQUIPMENT
- MUNICIPAL & HIGHWAY CASTINGS

MACHINE SHOP

FOUNDRY

PATTERN SHOP

SINCE 1872



First Choice of Leading Sand & Gravel  
Producers the World over

## EAGLE IRON WORKS

Engineers . . . Manufacturers

129 Holcomb

Des Moines

Iowa



ROY SNELL  
Canton, Ohio - Junior



## HENRY'S

INSTANT SERVICE DRIVE-IN

HOURS:  
Open: 10 A.M. to 11 P.M.  
Fri. - Sat. 10 A.M. to Midnight



VERN SKRIPSKY  
Cedar Rapids, Iowa - Senior

## CARTER PRESS, Inc.

CREATIVE PRINTERS  
206 Welch Avenue - Ames



# IOWA STATE UNIVERSITY

## Department of Intercollegiate Athletics

# Cardinal and Gold

## SCHOLARSHIP PROGRAM

Hundreds of student-athletes have had their education at Iowa State University financed through contributions of Cyclone Club members. More and more, the success of major college athletic programs is dependent upon the financial support of alumni and friends. The Iowa

State University Department of Intercollegiate Athletics is proud to honor the individuals and firms on these pages who have contributed one or more \$1,000 GOLD Full Scholarships or \$500 for a CARDINAL Half Scholarship.



**RUSSELL  
ANTHONY  
D.V.M.  
Cedar Rapids**

**RICHARD L. COX  
Ames**

**HOAK  
CONSTRUCTION CO.  
Des Moines**

**P & M STONE CO.,  
INC.  
Humboldt**

**RALPH AULMANN  
MEMORIAL  
SCHOLARSHIP  
Ted Aulmann  
Des Moines**

**FIRST NATIONAL  
BANK  
Ames**

**EVALD J. and  
BERNHARD L. JENSEN  
Memorial Fund  
Des Moines**

**UNIVERSITY  
BANK and TRUST  
COMPANY  
Ames**

**DR. A. G. BILISKIS  
Villa Park, Ill.**

**FISHER  
FOUNDATION  
Marshalltown**

**KENYON  
CONSTRUCTION  
COMPANY  
Des Moines**

**CHARLES W.  
SHIREY  
Waterloo**

**CARL BLUEBORN  
Waterloo**

**GIBBS-COOK  
EQUIPMENT  
COMPANY  
Des Moines**

**MEREDITH  
CORPORATION  
Des Moines**

**FRED WINKLER,  
& SONS  
Ames**

**LLOYD R. BOCK  
Des Moines**

**GREEN  
CONSTRUCTION  
COMPANY  
Des Moines**

**PEPSI COLA  
GENERAL BOTTLERS  
INC.  
Des Moines**

**ZEIDLERS, INC.  
Waterloo**



# The Cardinal Half Scholarship Donors

AMES DAILY  
TRIBUNE  
Ames

ECONOMY  
FORMS  
CORPORATION  
Des Moines

IOWA CORN  
BY-PRODUCTS CO.  
Colo

RUAN  
TRANSPORT  
CORPORATION  
Des Moines

BANKERS TRUST  
COMPANY  
Des Moines

RAY ENGEL  
Marshalltown

IOWA  
DES MOINES  
NATIONAL BANK

B. C. "Barney"  
SIMMONS  
Waterloo

BRAND  
HYDRAULICS, INC.  
Omaha, Neb.

ENGINEERED  
EQUIPMENT, INC.  
Waterloo

IOWA  
MANUFACTURING  
COMPANY  
Cedar Rapids

JAMES THOMPSON  
& SONS  
Ames

BUCK DENTAL  
CLINIC  
Ames

FEED SPECIALTIES  
COMPANY  
Des Moines

McCLURE  
ENGINEERING  
COMPANY  
Fort Dodge

UNIVERSAL  
ENGINEERING  
CORP.  
Cedar Rapids

BERT CARNEY  
Ames

GJELLEFALD  
ASSOC., INC.  
Forest City

MAINLINE  
EQUIPMENT  
COMPANY  
Des Moines

H. D. "Pete"  
WILSON  
Sioux City

C. W. CUNNINGHAM  
Omaha, Neb.

RAY HAGIE  
Clarion

MID-CONTINENT  
BOTTLERS, INC.  
Des Moines

YOUNKER  
BROTHERS  
Des Moines

DES MOINES  
REGISTER  
and TRIBUNE

H. R. HILSTROM  
Sycamore, Ill.

MUNN  
LUMBER  
COMPANY  
Ames

A FRIEND OF  
THE CYCLONES

EAGLE  
IRON WORKS  
Des Moines



# Why I contribute to the Cardinal and Gold Scholarship Program

Alumni and friends of Iowa State give you the "why" of their giving to Cyclone athletics through the Cardinal and Gold Scholarship Program. They express pride in being a vital force in helping achieve our goal of athletic excellence for Iowa State University . . .

“

"I feel it is important for the University to have a strong athletic program as a rallying point for its alumni and friends. An outstanding athletic program adds to the prestige of the University. I want Iowa State University to be the best."

RAY HAGIE  
Hagie Manufacturing Co., Clarion

"My contribution to the Cardinal and Gold Scholarship Program represents both a vote of confidence in the continued progress of athletic excellence at Iowa State, and a sound investment in America's future by helping selected scholar-athletes become outstanding citizens."

WILLIAM W. RINGHEIM, Pres.  
Iowa Corn By Products Co., Colo

"I like what I see in Cyclone Country. It is an honor to have the opportunity to play a small part in the success of Cyclone athletics."

BURL PLACE  
P and M Stone Company, Humboldt

"I am very proud to be an alumnus of a university that has long been a leader in the academic field. And I am most proud and happy to be able to contribute to a program that will help bring athletic excellence to Iowa State."

B. C. "Barney" SIMMONS  
Waterloo

"I respect and admire the athletic program of Iowa State University. It compliments in every way a sincere effort to provide a well-rounded education for our athletes in all sports. Collegiate athletics is a great American tradition. It must be continued. Support for the Cardinal and Gold Scholarship Program is a real privilege."

DEAN A. KNUDSON, President  
University Bank & Trust Co., Ames

"I am extremely proud to be an alumnus of Iowa State. It is my sincere hope that through contributions to the Cardinal and Gold Scholarship Program, Iowa State will soon be recognized both for its winning tradition in athletics and its academic excellence."

RICHARD COX  
Ames

"We believe that the objectives outlined by the Iowa State Athletic Department reflect the proper balance between the academic and athletic programs of the University. Iowa State has long enjoyed a reputation for academic excellence, and we hope our contribution will assist in offering an inter-collegiate athletic program on a comparable level."

JOHN R. FITZGIBBON, Pres.  
Iowa-Des Moines National Bank

"A program of athletic excellence will enhance the image of Iowa State University."

LLOYD R. BOCK  
Des Moines

"As an alumnus of Iowa State University, I feel a responsibility to help further its academic, cultural and athletic progress. My contribution to the Cardinal and Gold Scholarship Program is an effort to help the athletic program achieve its goal."

CARL A. BLUEDORN  
Zeidlers, Inc., Waterloo

"We are most pleased with the opportunity presented by the Cardinal and Gold Scholarship Program to assist the many fine athletes who produce the victories and excellent records amassed by Iowa State in intercollegiate athletics."

ROBERT W. STAFFORD, President  
First National Bank, Ames

"We are vitally interested in the growth of all sports in the state of Iowa. We feel that sports are a healthy outlet for the vibrant youth of today, and by participating in the Cardinal and Gold Scholarship Program we know that we are contributing to the leadership of tomorrow."

J. B. MAHER, JR., President  
Mid-Continent Bottlers, Inc., Des Moines

"The Cardinal and Gold Scholarship Program will enable Iowa State to compete favorably in all athletics. More importantly, it gives many students the opportunity to receive a college education and be exposed to a new and better way of life."

BOB VOHS  
Feed Specialties Company, Des Moines

"Iowa State has done much for me. Because of this, I am trying in a small way to repay the University through the athletic program and other of their projects. I would like to see Iowa State athletics get top ranking as the University has in academics."

CHARLES W. SHIREY  
C. W. Shirey Company Waterloo

"The goal of striving for athletic excellence through the Cardinal and Gold Scholarship Program while maintaining the respected reputation for academic excellence at Iowa State is certainly a worthwhile one."

M. F. COONAN  
Gibbs-Cook Equipment Co., Des Moines

"We regard our contribution to the Cardinal and Gold Scholarship Program as a two way investment — in American youth and the future of Iowa State athletics."

HOLLIS J. NORDYKE, Publisher  
Ames Daily Tribune

”



# THE CYCLONE CENTURY CLUB

The Iowa State University Department of Intercollegiate Athletics salutes the members of the CYCLONE CENTURY CLUB . . . a growing group of significant contributors to Iowa State Athletics. These indi-



viduals and firms have contributed \$100 or more annually to help us in our efforts to reach a goal of athletic excellence for Iowa State University.

## ADAIR

Adair Motor Lodge  
D. G. McQueen

## ADEL

Central Harvestore  
Glen Christiansen  
Don Leinemann

## ALBIA

Albia Auction Market  
Don Peterson

## ALGONA

Everds Bros., Inc.  
F. R. and J. C. Everds  
Dr. D. J. Shey

## AMES

Dr. A. R. Abbott  
Bruce M. Adams  
John F. Adams  
Allan Machine Shop  
Wendell L. Allan  
Bob Allen Motor Co.  
Bob Allen  
Allen Motor Company  
F. B. and Jim Allen  
G. Roger Alley  
Ames Building and Loan Assn.  
C. A. Hanlin  
Ames Advertiser  
Rudy VanDrie, Publ.  
Ames Daily Tribune  
Hollis Nordyke, Publ.  
Ames Lodge BPOE 1626  
Ames Ready Mix Concrete, Inc.  
K. J. Bartels  
Glendon Anderson  
J. D. Armstrong  
Max Bailey  
Dr. William A. Baird  
Dr. William H. Barnett  
Mrs. William H. Barnett  
James Barr  
Bates Jewelry  
Maury Bates  
Ben Franklin Store  
C. M. Peterson  
Dr. Charles Birdsall

## Dave Blackburn

Donald T. Bledsoe  
Bliss Construction Co.  
Richard K. Bliss  
Dr. William R. Bliss  
Mrs. William R. Bliss  
Merlin O. Borke  
Bourns, Inc.  
Robert B. Boyd  
Thomas L. Brayton  
James Brewer  
The Broiler  
John Pfeffer  
Jack Bruin  
Dr. James A. Buck  
Robert Buck  
W. J. Buck  
Dr. William M. Buck  
Verle Burgason  
Wise Burroughs  
Byers Office Equip. Co.  
Art Taylor  
Carney Brothers  
Bert Carney  
William B. Campbell  
Carr Hardware  
Art Ketelson—Jim Daffin  
Carter Press, Inc.  
George L. Carter  
Chef's Inn  
Robert McMahon  
Andy Christensen  
City and Country Real Estate  
Ev Cochrane  
Coe's House of Flowers  
Paul and Dave Coe  
Collegiate Manufacturing  
Ray Cook Construction Co., Inc.  
Ray Cook, Jr.  
Bud Corieri  
Harold A. Cowles, Jr.  
Richard L. Cox  
Joseph R. Coupal, Jr.  
Eugene Criss  
Cyclone Country Ambassadors  
Robert Mickle  
Cyclone Inn  
John Whattoff  
John Dasher  
Harold W. Davey  
Ray O. Donels

## Dr. John R. Doran

Doughboy Industries  
Russ Solheim  
Harlan R. Dubansky  
Lloyd C. Dumenil  
Motor Sales and Service  
Norm Dunlap  
Zac Dunlap  
Durlam and Durlam  
Mike Durlam, Jr.  
C. R. Elder  
Dr. M. A. Emerson  
Arthur H. Eschbach  
James L. Ethington  
Everts Flower Shop  
Harold Newell  
L. C. "Bill" Faust  
Dr. R. Earl Feldman  
Robert Fellingner  
First National Bank  
Robert Stafford, Pres.  
Robert A. Folkmann  
Lyle Frahm  
Frangos Restaurant  
Angelo and Steve Frangos  
R. Friedrich and Sons  
Robert and Reinhard Friedrich  
Froning and Deppe  
Robert Deppe  
Arnold Gaarde  
Dr. Tom Gartin  
William Gerold  
Earl Gibbs  
Dr. John A. Grant  
Guy's Restaurant and Lounge  
Guy Hornaday  
Carl Hamilton  
Hansen's Mobil Service  
Merle Hansen  
Wayne V. Harrell  
Marion Haynes  
Heaton's, Inc.  
Wally Spitt, Mgr.  
Theodore B. Heggen, Jr.  
Dr. G. J. Hegstrom  
Dr. John Herrick  
Hibbs Phillips 66  
Herb Hibbs  
Dr. Howard H. Hildebrand  
Robert L. Hildebrand

## Henry L. Holst

Byrl Houck  
H and F Builders, Inc.  
E. A. Hunziker  
Home Furniture & Appliance  
Warren Israel  
Holiday Inn  
John Needham, Mgr.  
Hy-Vee Food Stores  
Lowell Darnell  
Iowa Concrete Products, Inc.  
Robert Zack  
ISU Vet. Med. Alumni Assoc.  
Jameson's University Shop  
Harold Jameson  
James S. Jennison  
Dr. LeRoy L. Johnson  
Frank B. Johnston  
Paul R. Jones Sheet Metal  
Paul R. Jones and Jerry Jones  
KASI Radio  
Dale Cowle  
Kentucky Fried Chicken  
James D. Miller  
Knapp Insurance  
A. B. Knapp  
Kuehl's House of Insurance  
George P. Kuehl  
Homer K. Larson  
Dr. Walter W. Larson  
Dr. C. D. Lee  
Kenneth E. Lewis, C.L.U.  
Lorenz Construction Co.  
Duane Lorenz  
Glen Lowman  
Mrs. Ann McCormack  
McDowell's Agency, Inc.  
Al Stoll  
J. Brenton McKee  
John Mahlstede  
John Majors  
Mathison Motor Company  
Art and Dick Mathison  
Harold Maxwell  
Memorial Union  
Don Stevens, Dir.  
Louis Menze  
B. O. Mickelson  
Midwest Travel Agency  
Ralph Osmundson  
Frank E. Miller





# THE CYCLONE CENTURY CLUB

**Montgomery Ward and Co.**  
Jim Cornwell, Mgr.

**Wayne R. Moore**

**Alfred H. Munn**

**H. L. Munn Lumber Co.**

**Harold J. Nichols**

**Hollis Nordyke**

**Jack Nordyke**

**Norge Laundry & Dry Cleaning**  
Mert Daulton

**Northwestern Bell Telephone Co.**  
John E. Nutty

**Olive's**

R. B. Gauley

**Elsie H. Olson Estate**

**Olson Manufacturing Co.**  
Dean Huston

**Oslund Drug Company**  
Art Oslund

**Dr. R. Allen Packer**

**Dr. W. Robert Parks**

**Pasley, Singer, Seiser and Pasley**

**J. C. Penney Co., Inc.**  
Richard Wolfe, Mgr.

**Dr. Elroy Peterson**

**Paul W. Poppe**

**Eddie Quinn Clothier**  
John Huber, Mgr.

**Red Ram of Ames, Inc.**  
Ken Melber, Mgr.

**Richards Restaurant**  
Myrlin J. Richards

**Lynn D. Richardson**

**Rodson S. Riggs**

**Safeway Stores**  
Jim Fink, Mgr.

**Scanlon Olds-Cadillac, Inc.**

**Harry J. Schmidt**

**Mal Schmidt**

**Schoeneman Bros. Co.**  
Bill Allen, Mgr.

**Severson Insurance Agency**

**Sheldon Munn Hotel**  
John Lasche, Mgr.

**Shaughnessy's**  
Pat Shaughnessy

**Paul H. Sidles**

**Skeie Motor Company**

**Dr. Margaret W. Sloss**

**Stuart N. Smith**

**Walter A. Smith**

**Mrs. Walter A. Smith**

**Chuck Sondrol**

**Mrs. Charles Sorenson**

**Maurice Soultz**

**Dr. M. L. Spear**

**Dr. Robert Sprowell**

**Clay Stafford**

**Robert W. Stafford**

**Clay Stapleton**

**Stephenson's Dry Goods, Inc.**  
Conrad Stephenson

**Steve's Shell**

William Stephenson

**William L. Stewart**

**Student Supply Store**  
Don Ross

**Swank's Jewelry**  
Fred Swank

**James Thompson and Sons, Inc.**  
Kenneth Thompson

**Gary Thompson Oil Company**  
Gary Thompson

**Dr. William H. Thompson**

**L. C. Timm**

**Town and Campus**  
Arloe Hagge

**Dean George R. Town**

**Trans-Travel**

Tom Murrane

**Dudley S. Triplett**

**James Triplett**

**Trow Milk and Vending**  
Earl Trow

**Twentieth Century Bowling**  
Floyd Penkhus

**Dr. M. A. Ukena**

**Union Story Trust and Savings**  
Art Lucht, Pres.

**United Real Estate & Insurance**

**University Bank and Trust Company**  
Dean Knudson, Pres.

**University Shop**  
William Pelz

**Richard A. Vanderloo**

**Van Voorhis Heating and Cooling**

**William B. Vogt**

**Robert Vohs**

**Dr. Robert Walsh**

**A. Weldon Walsh**

**J. William Waters**

**Waldo W. Wegner**

**Whattoff Motor Company**  
Vern Whattoff

**White's Women's Apparel**  
R. N. White

**Dale R. Williams**

**Wayne W. Wilson**

**Fred Winkler & Sons**

**Dean C. Wolf**

**World Wide Travel Center**  
Herbert A. Harmison

**Kenneth V. York**

**William R. Yungclas**

## ATLANTIC

**John Budd**

**Wayne L. Camblin**

**Wayne Rogers**

## BELMOND

**Hugh H. Clarke**

**R. B. Thompson**

## BOONE

**Central Iowa Speedways, Inc.**  
Vernon Carman

**Nystrom Motors**  
Jack Nystrom

**Redeker Furniture Company**

**Rees Motor Company**  
Red Rees

**Vogler-Nieman Chev.-Buick**  
Harold Vogler & George Nieman

## BREDA

**Breda Veterinary Clinic**  
L. Marvin Ponren

## BURLINGTON

**Paul E. Benson**

**L. Marvin Pohren**

**Robert H. Tiemeyer**

## CALENDAR

**Howard Loehr**

## CARROLL

**Carroll Veterinary Clinic**  
H. T. Carver

**Crouse Cartage Company**  
Paul Crouse

**William Farner**

**Leo Fitzpatrick**

**Carroll Lane**

**Herald Publishing Company**  
Howard B. Wilson

**Robert A. Wright**

## CEDAR FALLS

**Iowa Structures**  
Pudge Camarata

**Myron and Doug Jepson**

## CEDAR RAPIDS

**Chester N. Affeldt**

**Dr. Russell H. Anthony**

**James W. Bell Company**  
**Blahnik Construction Co.**  
Robert Blahnik

**Builders Material Company**  
E. C. Doty

**Concrete Material Company**  
Fred Bellamy

**Crites and McConnell**

**Dr. J. O. Downing**

**Dr. Dean C. Frey**

**Ilten and Taege, Inc.**

**Iowa Manufacturing Company**  
Howard Hall, Pres.

**Iowa Midland Supply**  
L. G. Stephan

**Iowa Steel and Iron Works**  
R. B. Fleischhaker

**Eugene Larson**

**Gene M. Mason**

**Metal Crafters**  
Donald E. Derr

**Dr. Kenneth Paulsen**

**Peoples Bank and Trust Company**  
John M. Sagers

**William J. Probert**

**Universal Engineering Co.**  
R. V. Myers, Sec.-Treas.

**Vernon Winfrey**

## CHARLES CITY

**Skyline Harvestore**  
Dr. Merle Lockwood

**Ken Michelson**

**William Smith**

**Vernon (Barney) Thomas**

## CHEROKEE

**Thomas B. Grundman**  
**Dr. A. W. Krause**



# THE CYCLONE CENTURY CLUB



## CLARION

Robert L. Davison  
Ray W. Hagie  
C. Rodney Johnson

## CLINTON

Edward Howes

## COLO

Iowa Corn By-Products Co.  
William Ringheim

## CORNING

Dr. James E. Shaw

## COUNCIL BLUFFS

Beefland, International  
Bill Shannon  
C. H. Brandt and Sons  
Bruce Russell

## CRESCO

Don Gooder Motors

## CRESTON

Joe Weishaar

## DALLAS CENTER

Wilbur B. Royer  
Ben Kelly

## DANBURY

Robert Barry  
Farmers Savings Bank

## DAYTON

Jens Rugaard

## DENISON

Farmbest, Inc.  
Kenath B. Koch  
James R. Lodwick

## DES MOINES

American Republic Insurance Co.  
Watson Powell, Jr., President  
Darrell W. Anderson

Robert B. Ash

Bankers Trust Company  
Robert Sterling, President

Lloyd R. Bock

Bolton and Hay  
Robt. Bolton & James Speicher

Joseph E. Borg

Richard G. Bullard

Central National Bank and Trust  
Bernhard Grangaard, President

W. O. Conyers

Charles Cownie

Howard W. Crist

Orville E. Crowley

Cunningham-Reis Co.  
Earl Anderson

John Dempster

Des Moines Cold Storage Co.  
E. C. Muelhaupt, Jr.

Des Moines Register and Tribune

Des Moines Savings and Loan Assoc.  
Dickson Industries, Inc.  
Arthur D. Dickson

Robert Dillon

Eagle Iron Works  
Ted Aulmann, Pres.

Economy Forms Corporation

O. Robert Eddy

Bill K. Ellis

Engineering Products Corp.  
A. David Bear

Fletcher-Moist and Co.  
William Moist

Robert F. Galligan

Gibbs Cook Equipment Co.  
M. F. Coonan, Pres.

Edward Glazer

Globe Machinery and Supply  
Richard Morgan

Goodwin Companies

Fred R. Green

Green Construction Co.  
Ralph Green

Allyn E. Hagen

Heating Wholesalers Company  
James M. Green

E. George Henningsen

Charles Herbert

Hicklin GM Diesel, Inc.  
R. V. Hicklin

John F. Hilmes

Harry L. Hoak

J. Leo Hoak

Holmes, Murphy and Assoc.  
Ray Murphy

Home Federal Savings and Loan  
Jonathan Fletcher, Pres.

Hosts Incorporated

Iowa Des Moines National Bank  
John Fitzgibbon, Pres.

Iowa Road Builders Co.  
Steve Howard

C. R. Irvine

John D. Iverson

Jensen Foundation

Mrs. Margie B. Jensen

Carroll L. Johnson

Kaser Construction Company

Kenyon Construction Co.

Dr. Austin T. Knosby

C. B. Laird

George A. LaMair

Mrs. Rueben Lauritsen

L. B. Liddy

Byron W. Lodwick

Robert H. Lounsberry

James Lynch and Assoc., Inc.  
James A. Lynch

J. Robert MacNaughton

Eugene E. McAnelly

Macon Realty Company  
Harry Marks

Mainline Equipment Co.  
Nick Dozoryst

George F. Malcolm  
Massey-Ferguson, Inc.

Charles J. Maxwell

Meredith Publishing Company  
Darwin Tucker, President

Mid-Continent Bottlers, Inc.

Midwest Visual Education Service  
W. James Orth

Dudley J. Mills

Harold C. Neumann

Harold C. Neumann, Jr.

Walter N. Neumann, Jr.

R. E. Newberg

Pepsi-Cola General Bottlers, Inc.

J. J. Perpich

R. S. Prewitt Co.

Bill Reichardt

John Ringland

Carl P. Ripper

Dr. Van C. Robinson

Ruan Transport Corporation  
John Ruan, Pres.

Robert E. Savage

L. E. Slade

Robert Slinker

W. K. Sparks

Standard Distributors, Inc.  
Harold L. Harner

Dr. J. B. Synhorst

Taylor Refrigerator Co.  
Don Taylor

William Terry

Joe S. Tressler

Valley Bank and Trust Co.  
Neal Sands, Pres.

Vic's Tally-Ho  
Vic Talerico

Robert E. Walter

J. C. White Company

Allen Whitfield

Wilson H. Witt

George I. Wood

Vic Young Sporting Goods, Inc.  
Yunker Brothers

## DIXSON

Harold R. Lohmann

## DUBUQUE

William C. Brown Company  
Homer V. Butt  
Paul Dale  
Interstate Power Company

## DUNLAP

Dunlap Auction Market

## DURANT

Lilienthal Brothers

## EAGLE GROVE

Emerson Veterinary Clinic

## ELLSWORTH

Ralph Olsen





# THE CYCLONE CENTURY CLUB

## FONDA

R. Lee Kuhrt

## FOREST CITY

Gjellefald Assoc., Inc.  
O. N. Gjellefald

## FORT DODGE

Dr. Hoyt H. Allen  
Beaver Creek Distillery  
Fred Dalvey

C. M. Bodensteiner

Jack A. Bonnell

Ed DeBakey

John Evans

Mrs. Rachel Evans

Farmers Regional Co-op

First National Bank  
Earl J. Underbrink

Neil Hinds

Floyd D. Huling

Fred Jacox

Kalite Athletic Track Co.  
George Schnurr & J. W. Kiliper

Tom Kelly Ford

Franklin Larson

Levien Chevrolet Co.

Mrs. Helen McCarroll

McClure Engineering Co.  
Jon McClure

Starlite Village Restaurant

Ed Warren

Russell Whitney

John Weigman

## FREDERICKSBURG

Gene Carolan

## GARNER

Donald Greiman

Greiman Angus Farms  
Don and Cliff Greiman

## GLADBROOK

Gethmann Construction Co.  
Jack Gethmann

## GOWRIE

Richard A. Carlson  
Bernard Larson

## GRAND JUNCTION

Robert Clause

Roger Clause

## GREENFIELD

Lans Gibb

## GRINNELL

L. G. Keeney

Wilbur C. Molison

## GRUNDY CENTER

Ralph W. Anderson

## HUMBOLDT

Earl A. Clabaugh

Dr. Dean C. Harmon

M. E. Johnson

Robert Kirkpatrick

Dr. Sam D. Linn

Mickey Ford, Inc.  
Bob Mickey

Albert Morehouse

William Thomas

Blue Harvestore  
Jerri Vajgrt

## IDA GROVE

Ida Co. Pork Producers  
Dave Hessmann, Director

## INDIANOLA

Woodrow and Ted Diehl

Charles O. Lavery

## IOWA CITY

Frake and Strothman  
Jerry Frake & Max Strothman

## IOWA FALLS

Concrete Products Company  
Luke Altfillish  
Prestressed Concrete  
James Boehmler

## JEFFERSON

Kern Elerick

## JEWELL

Dr. C. L. Nelson

## JOHNSTON

Pioneer Beef Cattle  
Gerold Parks, Supt.

## KELLEY

M. J. "Jake" Muehlenthaler

## KELLOGG

Henry L. Kling

## KIRON

Kiron State Bank

## KNOXVILLE

Marion Co. Savings and Loan  
William W. Burrell

## LAKE CITY

Dr. James C. McCaulley

## LYTTON

Jim Albright

## MANNING

Leo J. Bruck

Manning Trust and Savings  
Byron Lodwick, Jr.

Ivan Opperman

## MARSHALLTOWN

Harold Bragg

James H. Boyd

G. F. Brockett

Walter E. Brown

Graham Conde

Allyn R. Cooper

Clayton H. Cooper

Jim Cooper

Glenn G. Cooper

Raymond A. Engel

Fisher Foundation

Charles Fjelland

Dr. John Garland

Verle J. Hunt

Cecil Johnson

Garry Lobaugh

Clair G. Mason

Carlton R. Mueller

R. W. Otilie

Nick Scallon

Tom Shive

William Whitehill, Jr.

D. Vincent Williams

## MASON CITY

First National Bank  
R. J. Zimmer, Pres.

Wallace, Holland, Kastler and  
Schmitz

Ralph H. Wallace

## MAQUOKETA

Maquoketa State Bank  
Edward L. Tubbs

## MOORHEAD

Dr. Rex Jones

## MOORLAND

Maurice Field  
Howard Moe

## MT. AYR

Jack Elliott

Herman Fennema

## MT. VERNON

Dr. R. R. Voetberg

## MOVILLE

Dr. E. E. Maxwell

## MUSCATINE

Grain Processing Corp.  
Frank Prochaska

## NEVADA

Mert Coover Chevrolet

Arthur L. Harrison

Nevada Evening Journal  
W. H. Ledbetter



# THE CYCLONE CENTURY CLUB



## NEWTON

Central Iowa Producers Credit  
Assoc.  
N. M. Peterson  
Richard M. Fritz  
Herman T. Holmes  
Mrs. Margaret Holmes  
Newton Animal Clinic

## OGDEN

Richard Freeman  
Ogden Grain Company  
Ralph Scott  
Sherbring Chevrolet Co.

## OELWEIN

Oelwein State Bank  
William P. Wilson

## ORANGE CITY

Siouxland Harvstore  
Bob Nolan

## OSKALOOSA

Garden Engineering Serv., Inc.  
John W. Hesling  
John W. N. Steddum  
Mahaska Veterinary Clinic  
PAMCO, Inc.  
Cloyce Palmer

## OTO

Mick Drea

## PERRY

Lauterbach Chevrolet  
Ray Lauterbach

## RADCLIFFE

Greenway Farms  
Byron Wagner  
Harlan P. Harper

## REINBECK

Peterson Contractors, Inc.

## SHEFFIELD

Dr. Frank J. Linn

## SHENANDOAH

Johnson's Clothing  
Howard K. Johnson

## SIOUX CITY

Clark Cattle Co.  
Glen Clark  
Sioux City Livestock Co.  
Ray Van Buskirk  
Dr. Dale R. Wassmuth  
H. D. "Pete" Wilson

## SPENCER

John C. Galvin  
Garlan Odor

## STATE CENTER

Eric Dee and Bros.

## STORM LAKE

William R. Lanphere

## STUART

Morrison Chevrolet Co.  
Harry and Hank Morrison

## VAN METER

Fletcher Jennings

## VILLISCA

David L. Williams

## VINCENT

Carl Schmallenberger

## WAPELLO

Wapello Vet. Clinic

## WATERLOO

Carl Bluedorn  
Jim Cordes Ford  
Milford L. Hurst  
Charles W. Shirey Company  
B. C. Simmons  
Earl B. Spencer  
Toenjes-Stenson and Warm  
Waterloo Savings Bank  
Dale DeKoster, Pres.

John B. Young  
Zeidlers, Inc.

## WAVERLY

Alfred Janssen

## WEBSTER CITY

Don Klucking  
Elmer H. Larson  
Naden Industries  
Robert W. Naden  
Dr. J. L. Pfacek

## WEST BRANCH

Iowa Valley Milling Co.  
Harold R. Spencer

## OUT OF STATE

Kenneth F. Ames  
Peoria, Illinois

Lee Anderson  
Woodstock, Illinois

Dr. Ronald C. Beckman  
Murray Hill, N.J.

Walter C. Berger  
Baltimore, Maryland

Albert G. Biliskis  
Villa Park, Illinois

Edward J. Bock  
St. Louis, Missouri

Glen Brand  
Omaha, Nebraska

Stanley H. Campbell  
Rockford, Illinois

N. V. Chehak  
Evansville, Indiana

Albert Cotsworth III  
Oak Park, Illinois

Chester W. Cunningham  
Omaha, Nebraska

George L. Dawson, Jr.  
Seneca Falls, N.Y.

Charles W. Durham  
Omaha, Nebraska

Charles Fraser  
Allen Park, Michigan

David C. Garfield  
Westfield, New Jersey

Richard S. Grant  
Toledo, Ohio

James N. Griswold  
Venice, California

Samuel C. Hamilton  
Hinsdale, Illinois

Edmund R. Hergenrather  
Arcadia, California

H. R. Hilstrom  
Sycamore, Illinois

Robert W. Hollin  
Dallas, Texas

Torvald J. Holmes  
Dayton, Ohio

Drs. Houck and Rydberg  
Lake Geneva, Wisconsin

Robert S. Hughes  
Los Angeles, California

Leland B. Johnson  
Scottsdale, Arizona

Everett W. Kischer  
Lynnfield Center, Mass.

James M. McKevitt  
Glenview, Illinois

Ronald L. McVey  
Houston, Texas

Rowland R. Manatt  
Houston, Texas

Dave Marth  
Rockford, Illinois

John Paine  
Interstate Harvstore  
Blair, Nebraska

Arloe W. Paul  
Milwaukee, Wisconsin

Clyde E. Shugart  
Perry Hall, Maryland

Gerald L. Smith  
Milwaukee, Wisconsin

Charles C. Tice  
Westchester, Illinois

Alfred W. Warren  
Glencoe, Illinois

Robert Wershay  
Barrington, Illinois

Thornton A. Wilson, Jr.  
Seattle, Washington

W. Lee Wiltsie  
Santa Ana, California

Jack W. Withrow  
Edina, Minnesota





**Dr. W. Robert Parks**  
President Iowa State University



**Maurice Soult**  
I.S.U. Faculty Representative  
to the Big Eight Conference



**Clay Stapleton**  
Director of Athletics  
Iowa State University





# Living Letters

Once again it's Homecoming at Iowa State. The students of Radio Workshop at ISU want to welcome you back and hope you have a wonderful weekend. But stop for a moment and think about those who are serving their country by being stationed overseas in the Armed Forces.

Just suppose . . . Your stint in the service is just about over but you still won't make it home in time for Christmas with your family. Maybe you've only been at your station a month, but even so—you're homesick. Homesick like you never thought you could be. Or maybe Christmas comes in the middle of your tour of duty and you haven't heard from home for at least two weeks. Wouldn't you like to hear the voice of someone you know?

That's how anybody feels who is stationed with the Armed Forces Overseas when they can't

be home for Christmas. **Wouldn't you?**

Well, you **can** do something for your serviceman overseas that will do wonders for his morale and won't cost you anything but about 20 minutes of your time. That's right . . . it only takes 20 minutes for you to come to the Telecommunicative Arts Studios in Exhibit Hall on the Iowa State campus and record your message to your friend or relative. And just think how great they'll feel!

Now, for the fourth year, the students of Radio Workshop at Iowa State are sponsoring the Christmas Living Letter Project. Also cooperating are Pi Kappa Phi fraternity, who purchases the tapes at cost and supplies them to Radio Workshop at no cost for anyone who wants to record, Electronic Supply, Inc., of Ames, who sells the tapes at cost, and the Story County Chapter of the

American Red Cross, who supplies us with Air Mail postage.

You're right again! All these organizations are supplying these materials at **NO COST TO THE PUBLIC**. All it takes is twenty minutes of your time to come and record your message.

Just think how your serviceman or woman will feel when they hear the sound of your voice. Remember, these tapes go all over the world—whether your GI is stationed on board a destroyer in the middle of the ocean, flying a plane from Guam to Okinawa, holding the fort in Germany or Spain, or fighting in the front lines in Viet Nam—your message, live and on tape—will reach him in time for Christmas.

If you would like to find out more about **LIVING LETTERS** and what you can do, contact Jill Jensen, student coordinator, or Richard Pheneger, faculty adviser, at Telecommunicative Arts, Exhibit Hall, Iowa State University, 294-5000.



## UNIVERSITY BANK & TRUST CO.

Your **ONLY** Full Service Bank in Campustown

**"THE STUDENTS BANKING HOME AWAY FROM HOME"**

Serving Ames and Iowa State University

For 53 Uninterrupted Years

1916 - 1969

Lincoln Way & Hayward

South of The Stadium

Member FDIC



**GO  
C  
Y  
C  
L  
O  
N  
E  
S**

**AMES  
CYCLONE  
BOOSTERS**



ADAMS FUNERAL HOME  
AMES BUILDING AND LOAN ASSOCIATION  
AMES FRUIT & GROCERY STORES—ROSS R. GENOVESE  
AMES FRUIT & GROCERY STORES—TIMOTHY KILLOM  
AMES MILLWORK & SUPPLY COMPANY  
AMES STATIONERS  
AMES TRAVELODGE MOTEL  
ASGROW SEED COMPANY  
BEATY REAL ESTATE & INSURANCE  
BEN FRANKLIN STORE  
BERCK'S CYCLONE SHOP  
BOB'S MILAGE SERVICE  
BOURN'S, INCORPORATED  
BRUCE-ROSS BY THE CAMPUS  
BUCK CONSTRUCTION COMPANY, INC.  
BYERS OFFICE EQUIPMENT COMPANY  
CAMPUS DRUG COMPANY  
CLINIC PHARMACY  
CREDIT BUREAU OF STORY COUNTY, INC.  
DYNA-KLEEN SERVICE  
EDDIE QUINN CLOTHIER  
EL RANCHO MOTEL  
ENGELDINGER'S  
H. L. MUNN LUMBER COMPANY  
HALE FURNITURE & CARPET CO.  
HAROLD W. OLSON  
HILL STUDIO  
HUNZIKER & FURMAN REALTY  
HY-VEE FOOD STORES 1 & 2  
IOWA CONCRETE PRODUCTS COMPANY  
IOWA ELECTRIC LIGHT AND POWER COMPANY  
IOWA ROAD BUILDERS COMPANY  
IRMA GREEN, MGR.  
JAMES THOMPSON & SONS  
KENTUCKY FRIED CHICKEN  
KING'S FOOD HOST U.S.A.  
MC FARLAND CLINIC  
MIDWEST TRANSPORTATION, INC.  
PAUL LORENZ CONSTRUCTION COMPANY  
RATLIFF'S APCO & SPUDNUT  
ROSEBROOK, GARTIN AND BOND, MD'S  
S. HANSON LUMBER COMPANY INC.  
SEARS, ROEBUCK AND COMPANY  
SEVERSON INSURANCE AGENCY  
STEPHENSON'S DRY GOODS, INC.  
STUDENT SUPPLY STORE  
TWENTIETH CENTURY BOWLING  
WESTGATE HAIR FASHIONS, BARBER & BEAUTY  
WHITE'S  
VECO (VIVIAN EQUIPMENT CO., INC.)  
NIMS SPORTSMAN'S OF AMES  
EVERT'S FLOWERS—GIFTS—CANDIES  
ALLAN MACHINE COMPANY





# RAH! RAH! CYCLONES

*We're all rooting for  
Johnny and the team*  
**GO GET 'EM!!**

*Collegiate* MFG. CO. - - AMES, IOWA  
(where Cy was hatched)

## TOUCHDOWN!



After the game make an end run down Lincoln Way  
and touch down at either of the 2 convenient  
Kentucky Fried Chicken locations . . . hand-off your  
cooking chores to the expert . . . the Kentucky Colonel!

## Kentucky Fried Chicken

2 Convenient Locations to Serve You

### CHARCO'S DRIVE-INN RESTAURANT

309 S. Duff  
232-3616

### KENTUCKY FRIED CHICKEN TAKE HOME SERVICE

511 LINCOLN WAY  
232-8800

- Charco Broiled Hamburgers
- Kentucky Fried Chicken
- Sandwiches, Fries and Coleslaw in Baskets
- Shrimp and Fish Dinners
- Malts - Shakes - Soft Drinks

- Bucket of Chicken
- Individual Dinner
- Snack Pack
- Cole Slaw - Baked Beans - Potatoes & Gravy
- Biscuits - Drinks
- Barrel of Chicken
- Family Party Box







Offside



Illegal procedure,  
position or  
substitution



Illegal motion



Illegal shift



Delay of  
game



Illegally passing  
or handing  
ball forward



Illegal return

# FORWARD FOR AGRICULTURE



Touchdown or  
field goal

Mary Ann Maurer, senior in applied art from Ames, illustrates for your edification the various signals used by officials in today's football game. Mary Ann is a member of Chi Omega sorority and is active in campus and student activities.

The great contributions being made by Iowa State University are of tremendous benefit to the most important industry in America . . . agriculture. By providing leadership in technical research and highly trained agricultural specialists, ISU is a strong factor in the continuing progress being made by farmer-owned Felco Cooperatives.



Felco Soils Technical Representative Dave Seehusen is a 1968 Iowa State University graduate with a B.S. in Ag Business.



Unsportsmanlike  
conduct



A FORWARD FORCE  
IN AGRICULTURE



Personal foul



Ball ready for play



Safety



Illegal use of  
hands and arms



Intentional  
grounding



Forward pass or  
kick catching  
interference



Ineligible receiver  
downfield on pass



Incomplete forward  
pass, penalty  
declined, no play  
or no score



Helping runner or  
interlocked interference



Ball dead; if hand  
is moved from side  
to side: touchback