

HOMECOMING

KANSAS
V · E · R · S · U · S
IOWA STATE
OCTOBER
TWENTY-SIXTH
1929



at **AMES**

WELCOME HOME ALUMNI

Help Our Team Fight



Good
Equipment always
helps
Let us Equip you



L.H. KURTZ CO.

312-314 Walnut
DES MOINES, IOWA

HOMECOMING PROGRAM

KANSAS
vs.
IOWA STATE

FOOTBALL GAME

Saturday, October 26, 1929, 2 P. M.

Published by the Athletic Council of Iowa State College

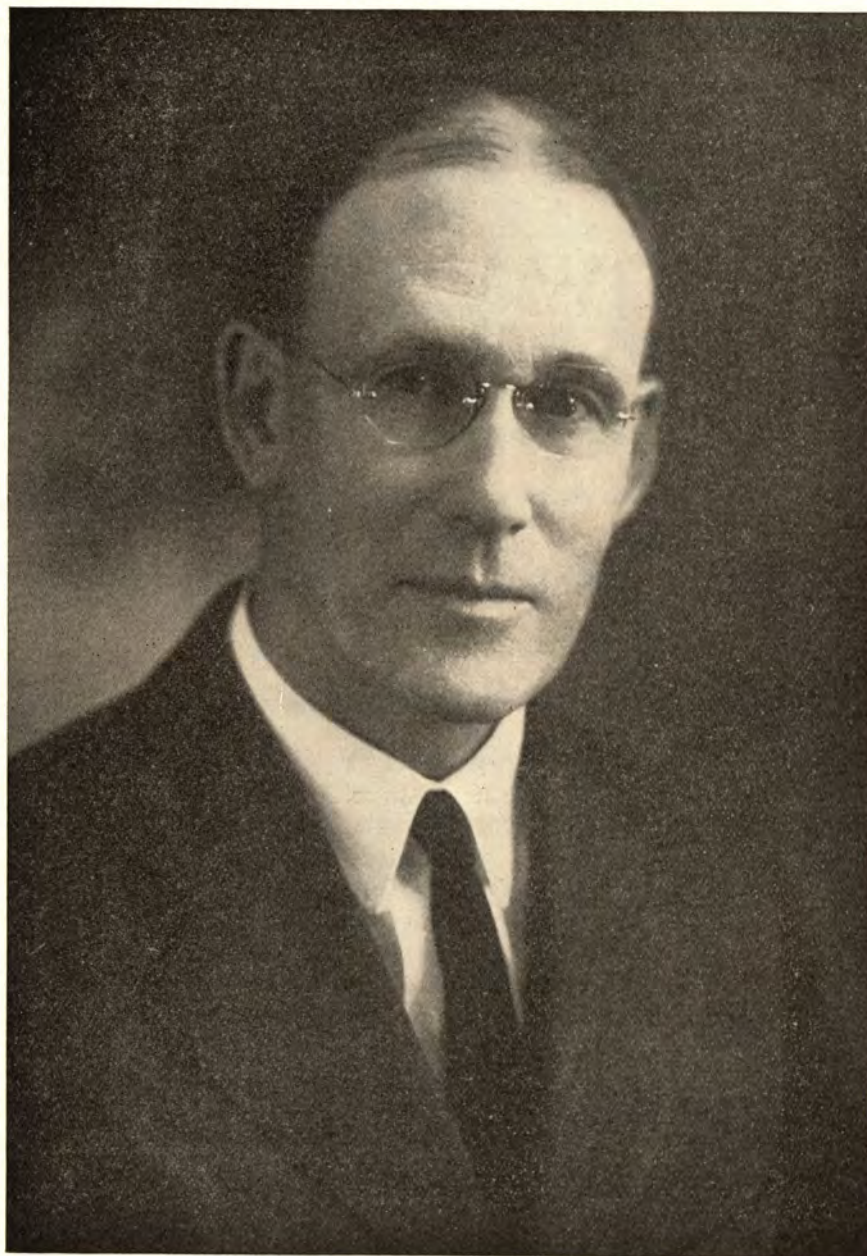
Price 25 cents

REMAINING GAMES


- Nov. 2 Oklahoma at Norman
Nov. 9 Kansas State at Manhattan
Nov. 16 *Drake* at Ames
 (Parents Day) (Boy Scout Day)
Nov. 23 *Drake Freshmen* at Ames
Nov. 28 Nebraska at Lincoln
 (Thanksgiving Day)

NEXT YEAR'S SCHEDULE

- Oct. 4 Illinois at Urbana
Oct. 11 (Open)
Oct. 18 Nebraska at Ames
Oct. 25 Kansas at Lawrence
Nov. 1 Oklahoma at Ames
Nov. 8 Missouri at Columbia
Nov. 15 Kansas State at Ames
Nov. 22 Drake at Des Moines



DR. RAYMOND M. HUGHES
President of Iowa State College

N behalf of Iowa State College, I am happy to welcome the representatives of the University of Kansas to our campus on Homecoming Day. It is a pleasure to greet the alumni, former students and friends of the college as they return for this distinct occasion. We hope this visit will bind you even more closely to this institution.

R. M. Hughes.

October 26, 1929.

HOTEL KIRKWOOD

Open May, 1930
Grand Ball Room
Popular Coffee Shop
A High-Class Hotel
at Reasonable Rates



300 Fireproof Rooms
Good Location
Make the Kirkwood
Your Des Moines
Home

TANGNEY-M'GINN HOTEL CO.

Hotel Russell Lamson
 Waterloo, Iowa
 Hotel Thompson, Worthington, Minn.

Hotel Sheldon-Munn
 Ames, Iowa

Hotel President
 Waterloo, Iowa
 Hotel Rogers, Bloomington, Ill.

WHITMANS CANDIES

WHITINGS STATIONERIES

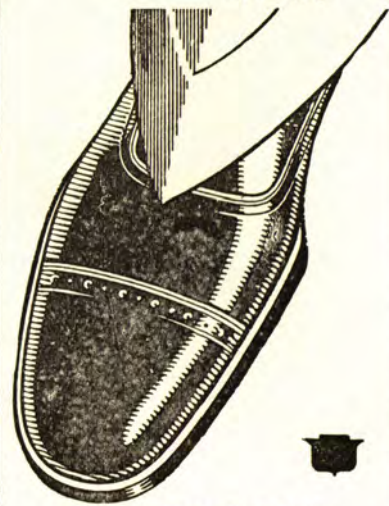
Toilet Accessories and
 Necessities for the Most
 Discriminating

at

Judisch Brothers

Phone 70

The
FLORSHEIM
 Shoe



TRUEBLOOD'S
 Campustown

Iowa State Coach and Captain



COACH WORKMAN AND CAPTAIN SCHLENKER

Noel Workman's team have the happy habit of winning their Homecoming Games.

In his three years at Iowa State we have won our Homecoming games with Kansas Aggies and Oklahoma.

Battery and Electrical Dept.
Willard Batteries
Adolph Seestrom, Mgr.

Lubrication and Car Washing Dept.
Quaker State and Mobile Oils
Geo. Clark, Mgr.

PHONE 35

W. H. Nutty Super Service Garage

Official
AAA
Garage

DAY AND NIGHT
A. E. STETTLER, Night Mgr.
414 MAIN STREET

Sales
OLDSMOBILE
Service

Parts and Accessory Dept.
Goodyear and Pennsylvania Tires
L. A. Diestler, Mgr.

Shop and Service Dept.
Wrecked Cars Rebuilt
Lacey Morrison, Mgr.

Welcome Alumni

Olmsted College Shop

Men's Wear

Gus Martin, Mgr.

J.C. PENNEY CO.

Keep the Wolf

At the Back Door

If the well known Wolf has acquired the habit of putting his paws right through your front door, we'll tell you the secret of keeping him at the tradesman's entrance!

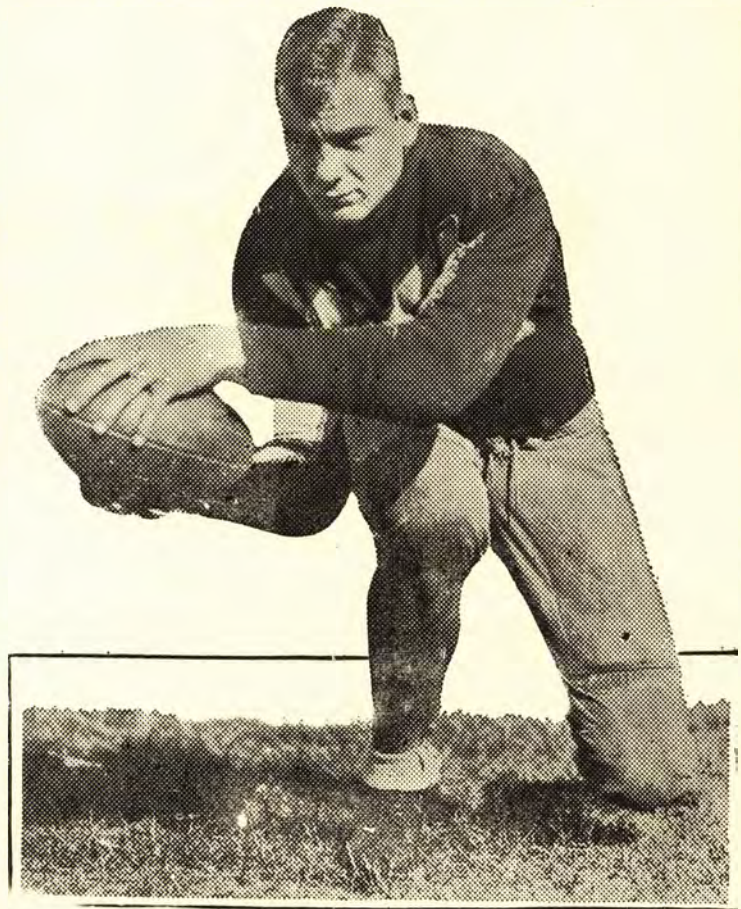
Paying cash, not only keeps you out of debt, but actually saves you a small sum on everything you buy,

If you can't believe it, just walk through our store and compare prices and qualities!

Kansas Coach and Captain



COACH H. W. HARGISS



CAPT. STEWARD LYMAN

This is Coach "Bill" Hargiss' second season at K. U. In his twelve years of coaching at K. U. and at Kansas State Teachers College at Emporia, his teams have won 110 games, tied 11, and lost 28.

His assistants at Kansas are M. J. Getts, All-American tackle at Pittsburgh in 1928, and John W. Burn, a former sport star at Kansas.

Alumni Meet the Football Staff



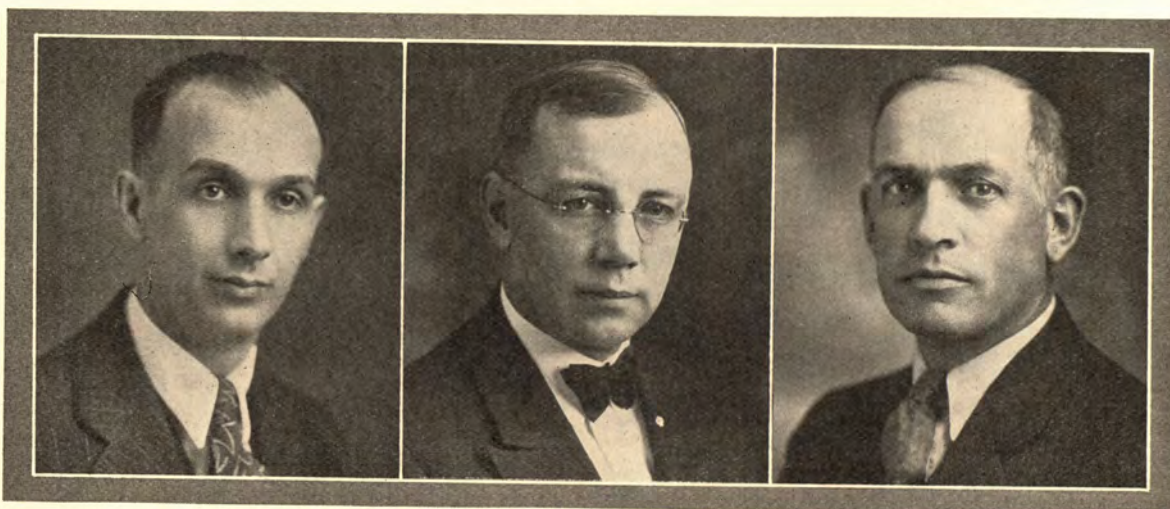
HARRY J. SCHMIDT
Iowa State, 1925
Assistant Coach



NOEL WORKMAN
Ohio State, 1923
Head Coach



FRANK HONAKER
Ohio State, 1923
Assistant Coach



MERL J. ROSS
Ticket Manager

DR. HARRY JOHNSTON
Hahneman Medical, 1919
Medical Adviser

GEORGE T. NELSON
Grinnell, 1916
Head Trainer

Come On---Let's Put 'Er Over

Putting it over applies to printing as well as football. Our printing
"Puts It Over."

SERVICE PRINTING COMPANY

Campustown

Two Shops

Downtown

Alumni Meet the Football Staff



HUGO OTOPALIK
Nebraska, 1918
Freshman Coach



LOUIS E. MENZE
Missouri State Teachers, 1923
Freshman Coach



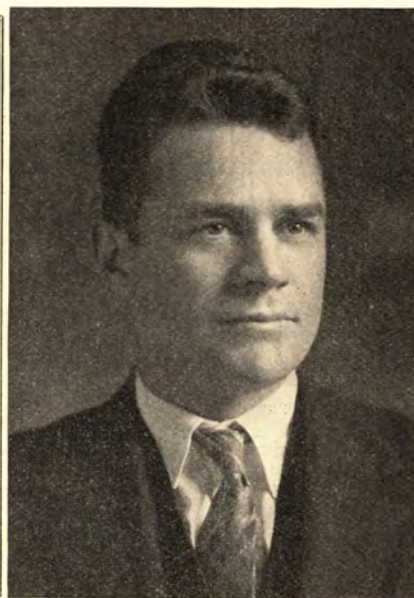
T. NELSON METCALF
Oberlin, 1912
Director of Athletics



HARRY LINDBLOM
Iowa State
Freshman Coach



CARL RUDI
Iowa State, 1929
Assistant Coach



James Hardwick
V. P. I., 1920
Freshman Coach

JACOBS, Inc.

Clothes that fit, wear and look right. Lower prices than ever before.
Never before were such Suits and Overcoats shown at \$19.75, \$27.50 and up to \$32.50.
You will say so, too, when you try one on.
Buy one of our Pure Wool Sweaters at \$1.00 to \$2.00 less than you have ever bought them; and we want you to try on a Horsehide Leather Coat and a Sheep-Lined Coat that are cut to fit. You will easily feel the difference.



BATHROOM beauty does not necessarily mean large expenditures. In proof, this room is offered. The hangings are inexpensive, the walls painted plaster, the floor oak. Not a square of costly tiling is used. Yet it would be hard to find a room more colorfully charming. Or possessing more modern plumbing comfort and quality than this one, with its Nile green lavatory, dressing table,

and bath, from the newest Crane *Corwith* group. Suggested for remodeled houses, where it will add value far past the cost, this room will be inspiring also in planning new houses Many other Crane ideas for beautiful bathrooms are collected in the book, *New Ideas for Bathrooms*. Ask for a copy. See your architect and a responsible plumbing contractor about plans and estimates.

150
Pounds Pressure



CRANE



2500
Pounds Pressure

FIXTURES, VALVES, FITTINGS, AND PIPING, FOR DOMESTIC AND INDUSTRIAL USE

Crane Co., 1440 Walnut St., Des Moines, Iowa • Branches and sales offices in one hundred and eighty cities

Kansas Players



FORREST COX



EDGAR SCHMIDT



VERGIL PADEN



JIM BAUSCH



PAUL FISHER



ART LAWRENCE

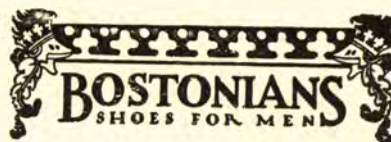
The Campus Lunch

Where
Service, Quality and Prices are
Combined

Special Tables Reserved

We Cater to Parties

Phone 1037-J



The choice of men who make it a point
to always get the best.

\$7.00 to \$10.00

AMES BOOTERY
The Home of Good Shoes

Bigger  Better

ALLEN MOTOR CO.

Sales and Service

Used Cars with an OK that Counts

5th & Douglas

Phone 395

TO GET WHERE YOU
WANT TO BE
USE

SKELLY
Refractionated
GASOLINE

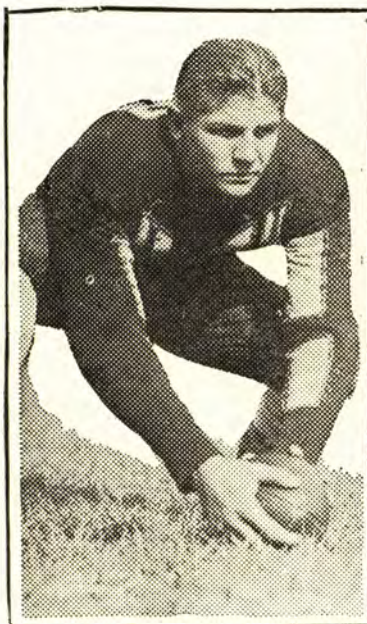


SERVICE STATION AT EAST END OF MAIN ST.
IN DOWNTOWN AMES

Kansas Players



CECIL SMAY



FRANK "PETE" BAUSCH



OTTO ROST

Copper Clad Stoves

Atwater Kent Radios

Acme Paints

Sporting Goods

Christensen Hardware Company

Successor to D. J. Bullock

Shelf and Heavy Hardware

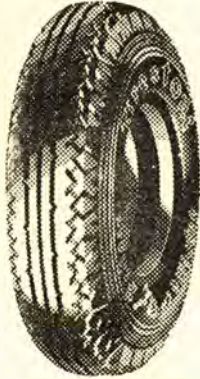
Ames, Iowa

We Issue Hunting Licenses

Phone 12 - 125 Main St.

Alemiting—Washing—Batteries—Brakes—Vulcanizing
Expert Workmanship

"Gum Dipped"



A LONG GAIN

in Tire Service

will be yours when
you change to

FIRESTONE TIRES

"Most Miles Per Dollar"

TRAUGER'S SUPER SERVICE

5th and Duff

Ames, Iowa

Phone 172

Homecoming Days are Happy Days

When they lead you back to the old haunts and when your team wins the game. You can add to these days if you will drop in at our store and buy a box of

JOHNSTON'S CANDY OR AN I. S. C. BLANKET

Come in and Renew Old Acquaintances



West Ames

Iowa State Players



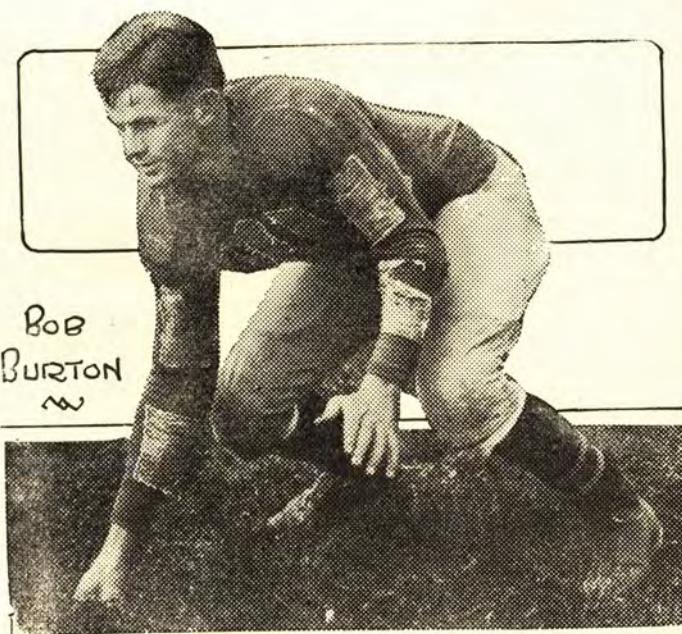
TRAUGER



SPEAR



LARSON



BOB
BURTON

Russian Symphonic Choir

BASIL KIBALCHICH, Director



"A body of solo singers joined together under the able leadership of a master musician."—The Boston Globe.



STATE GYMNASIUM

Friday Evening

NOVEMBER 8TH

at 8:15 o'clock

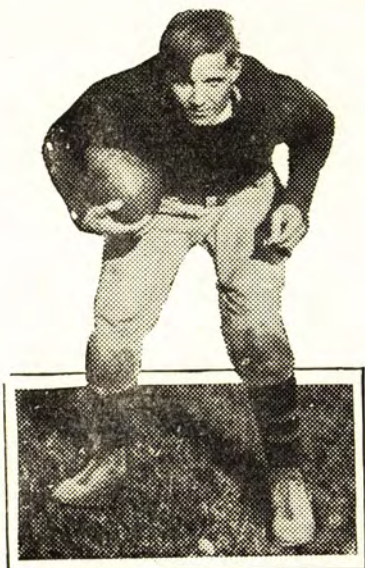
Prices: 75c, \$1.00, \$1.50, \$2.00—Address orders to Tolbert MacRae, Ames, Iowa

PADEREWSKI will be in Ames April 11, 1930. Seats are on sale now.

Address orders to Tolbert MacRae, Ames, Iowa.



H. JOHNSON



DICK WILCOX



"BENNETT"



ROE



TEGLAND



KERN



ELERICK

Iowa State Squad

Jersey No.	Position	Name	Home Address	Weight
11	Half	Bowes, Gordon	Albert Lea, Minn.	147
12	Half	PETERSON, CARL	Chicago Heights, Ill.	152
15	Guard	KUBICEK, MILTON	Cresco	180
16	Half	Swoboda, Franz	Omaha, Nebr.	164
17	Half	BENNETT, FORREST	Marshall, Okla.	188
18	Quarter	TRAUGER, PAUL	Ames	152
19	End	Hitch, Gilbert	Ft. Madison	170
22	Center	Boardman, Arthur C.	Canton, S. D.	172
25	Full	Duesenberg, Warren	Garner	177
26	Tackle	Smith, Robt.	Des Moines	182
27	End	Nagel, Lloyd	Guthrie Center	171
28	Guard	SCHLENKER, EDWIN, Captain	Des Moines	181
29	Tackle	Nolte, Franklin	Hampton	199
30	Full	TEGLAND, RUDOLPH	Story City	180
32	Center	Nagel, Gordon	Guthrie Center	195
33	End	Rieke, Max	Blairtown	179
43	Center	DOTY, JESSE	Lake City	173
52	Guard	SPEAR, MAYNARD	Toledo	199
53	Half	Wells, Kenneth	Lake View	166
58	Quarter	WILCOX, RICHARD	Stanhope	165
62	Guard	KERN, CARL	Cedar Rapids	166
63	End	JOHNSON, HARRY	Dubuque	169
66	Guard	ROE, ORRIE	Ames	178
68	End	Welty, Wayne	Shenandoah	160
72	Quarter	Elerick, Kern	Keosauqua	142
78	End	BURTON, ROBERT	Waterloo	170
82	Tackle	Lounsberry, Floyd	Colo	189
86	Half	LARSON, ELMER	Sergeant Bluff	177
88	Tackle	Intermill, Webster	Ft. Dodge	176
89	End	Johnson, Glen	Grinnell	159
90	End	Reynolds, Wayne	Ames	157
91	Tackle	Hood, Charles	Creston	170
92	Tackle	Frederici, Cecil	Nashua	171
93	Guard	Reid, Lawrence	Ft. Worth, Tex.	161
94	Guard	Teach, Harold	Abingdon, Ill.	175
95	Center	Valentine, Richard	St. Ansgar	170
97	Half	Conaway, Roy	Corning	150
98	Half	Nelson, Truman	Kanawha	178
....	End	Pontius, Andy	Fort Dodge	170

Names in capital letters are those of lettermen.

Manager—Wilcox, Harley

Assistant Manager—Dunn, John

Assistant Manager—Featherstone, Conrad

PURITAN RESTAURANT

223 Main St.—Downtown

I. W. SMITH, Prop.

Today, as usual on football days, many a conversation will carry the message of the above caption.

Football fans and players alike have endorsed with the stamp of their approval the good values in food, service and environment to be had at the Puritan, the great meeting place before and after the game.

Kansas Squad

Jersey No.	Position	Name	Home Address	Weight
10	Tackle	BRAMLAGE, ED	Junction City	192
11	Back	LAWRENCE, ARTHUR	Olathe	175
12	Guard	LOGAN, ROLAND	Leavenworth	186
13	Back	PAYNE, FOSTER	Kansas City, Kans.	180
14	Guard	Reitz, Loren	Kansas City, Kans.	169
15	Center	SMOOT, CHARLES	Bartlesville, Okla.	181
16	Back	FISHER, PAUL	Pittsburgh	175
17	Guard	Milburn, Geist	Preston	182
19	Tackle	SCHOPFLIN, JACK	Kansas City, Mo.	203
20	End	PADEN, VIRGIL	El Dorado	165
22	Back	LYMAN, STEWARD (Captain)	Columbus	175
24	Back	ASH, EDMUN	Kansas City	155
27	Back	Madison, Johnny	Kansas City, Mo.	160
32	Back	Kittrell, Lewis	Arkansas City	167
35	Back	Page, Lee	Kansas City, Mo.	174
36	Guard	Rost, Otto	St. Louis, Mo.	203
39	End	RAMSEY, FLOYD	El Dorado	182
40	Back	SCHMIDT, EDGAR	McLouth	180
41	Back	COX, FORREST	Newton	190
43	Guard	Davis, Lee	Emporia	185
47	Back	Black, Fred	Kansas City, Kans.	160
49	Tackle	SOREM, NELSON	Jetmore	190
50	Tackle	Atkeson, George	Lawrence	195
54	End	Kennedy, Archie	Lawrence	164
61	Tackle	Smay, Charles	Parsons	197
64	End	COCHRAN, ALLEN	Protection	170
66	End	FETTY, CARLOS	El Dorado	180
67	End	Carlson, Bernard	Aurora, Mo.	175
68	Back	Bausch, James	Wichita	200
69	Guard	Sorem, Milton	Jetmore	202
70	Tackle	Foy, Earl	Hutchinson	203
71	End	Smay, Cecil	Parsons	178
73	Center	Bausch, Frank	Wichita	200
74	End	MULLINS, RICHARD	Lawrence	180

Names in capital letters are those of lettermen.

Weather Forecast

A severe storm may occur at any time. Be prepared. Order
Storm Sash and Weather Strips at once

H. L. Munn Lumber Co.

Phone No. 2

IOWA STATE

OFFICIALS

Tear-em-up Cyclones

Over half a century in Ames.

Union National Bank

20

Probable Line-Up

KANSAS

L. E. 20 Paden	L. T. 70 Foy	L. G. 69 M. Sorem	Center 73 F. Bausch	R. G. 36 Rost 50 Atkeson	R. T. 19 Schopflin	R. E. 71 C. Smay
--------------------------	------------------------	-----------------------------	-------------------------------	---------------------------------------	------------------------------	----------------------------

Q. B. 16 Fisher

L. H. 22 Lyman

F. B. 68 J. Bausch

R. H. 11 Lawrence

Score by Quarters

	First Quarter	Second Quarter	Third Quarter	Fourth Quarter	Final Score
IOWA STATE					
KANSAS					

We Help to Outfit You From Freshman Caps to Caps and Gowns



Designers and Manufacturers of

Freshman Caps T-M-C Laundry Cases

Athletic Blankets Banners

Pennants Pillow Covers

Memory Books

Chemistry Coats and Aprons

Class Coats, Fraternity Coats, Sport Coats

T-M-C Academic Caps T-M-C Academic Gowns

Ask for T-M-C Merchandise

Tilden Manufacturing Co.

Ames, Iowa

Cross Country Run



ROBERT I. SIMPSON
Coach of Track and Cross Country

Iowa State	Kansas
1. Putnam (C.)	7. Fortune (C.)
2. Thompson	8. Hinshaw
3. Howell	9. Bowers
4. Gore	10. Levine
5. Roadcap	11. Stover
6. Merrifield	12. Matthews

Last year Kansas won the Big Six Cross Country Championship, with Iowa State second. The race today is over a five-mile course. The local course record of 26 minutes 35 seconds was set last year by Ray Putman, this year's Captain.



RAY PUTNAM
Captain

Ride the Fort Dodge Line Busses



Learn the economy and convenience of Fort Dodge Line Bus travel. Winter and summer, day and night, you travel safely, at your ease.

Here, too, is a new travel convenience. Carrying fewer passengers at a time, Fort Dodge Line Buses run surprisingly often. They offer time-saving service to and from hundreds of cities and towns.

Fort Dodge, Des Moines & Southern Transportation Co.

J. A. TANNER, SUPT.
Ames, Iowa
Tel. 701

G. L. MOTZ, MGR.
Boone, Iowa
Tel. 139

PHIL KELSEY, SUPT.
Des Moines, Iowa
Tel. 3-9366

Uphold the Spirit and Tradition of Iowa State Athletics

OUR PLAYERS

Play fairly and within the spirit of the rules.
Play manfully and courageously to the last minute no matter what the odds.
Keep themselves in the best possible physical condition.
Win without boasting and lose without excuse.
Are unselfishly loyal to school, coaches and teammates, cooperating in every way for the success of the team.

OUR CROWDS

Treat opponents with the courtesy due guests and friends.
Applaud fine plays by opponents.
Accept decisions of officials without question.
Do not "crab" when our teams are defeated.
Remain in the stand until the game is over and both teams have left the field.

Boost Iowa State

The Black Diamond Line is Best



Athletic Supporters, Elastic Anklets and Knee Caps, Trusses,
Abdominal Supporters and Elastic Hosiery
(Special orders have our prompt attention)

Manufactured by

American Silver Truss Corporation

Coudersport, Pennsylvania

"Built up to a standard—not down to a price"

Fight! Ames, Fight!

L. C. TALLMAN
JEWELER
and
OPTOMETRIST
Two Stores
AMES AND CAMPUS

We Will Meet You
at the
**Lincoln Candy
Kitchen**
2504 Lincoln Way - Phone 1128

FRANK THEIS
Druggist
The Rexall Store
217 Main St. - Ames, Iowa

DAVIS & BANKS
for
MILK AND CREAM
ICE CREAM AND BUTTER
114 Kellogg - Phone 369

**S. Hansen Lumber
Company**
LUMBER AND BUILDING
MATERIALS
212 Duff Ave. - Phone 10

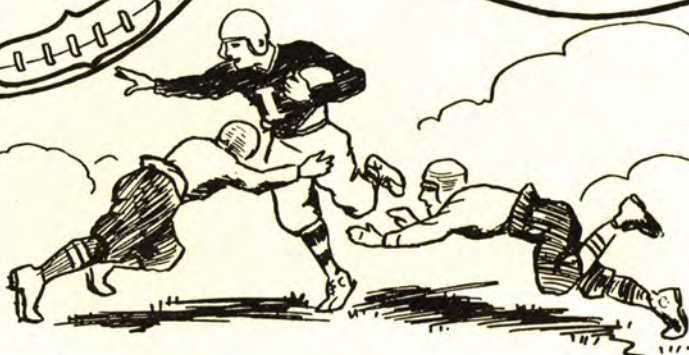
Ames National Bank
The Bank where you feel at
home
240 Main Street

MABEL M. HART
Cosmetologist, Skin, & Scalp
Specialist
Phone 250 - Rooms 24 & 25
Ames National Bank Bldg.

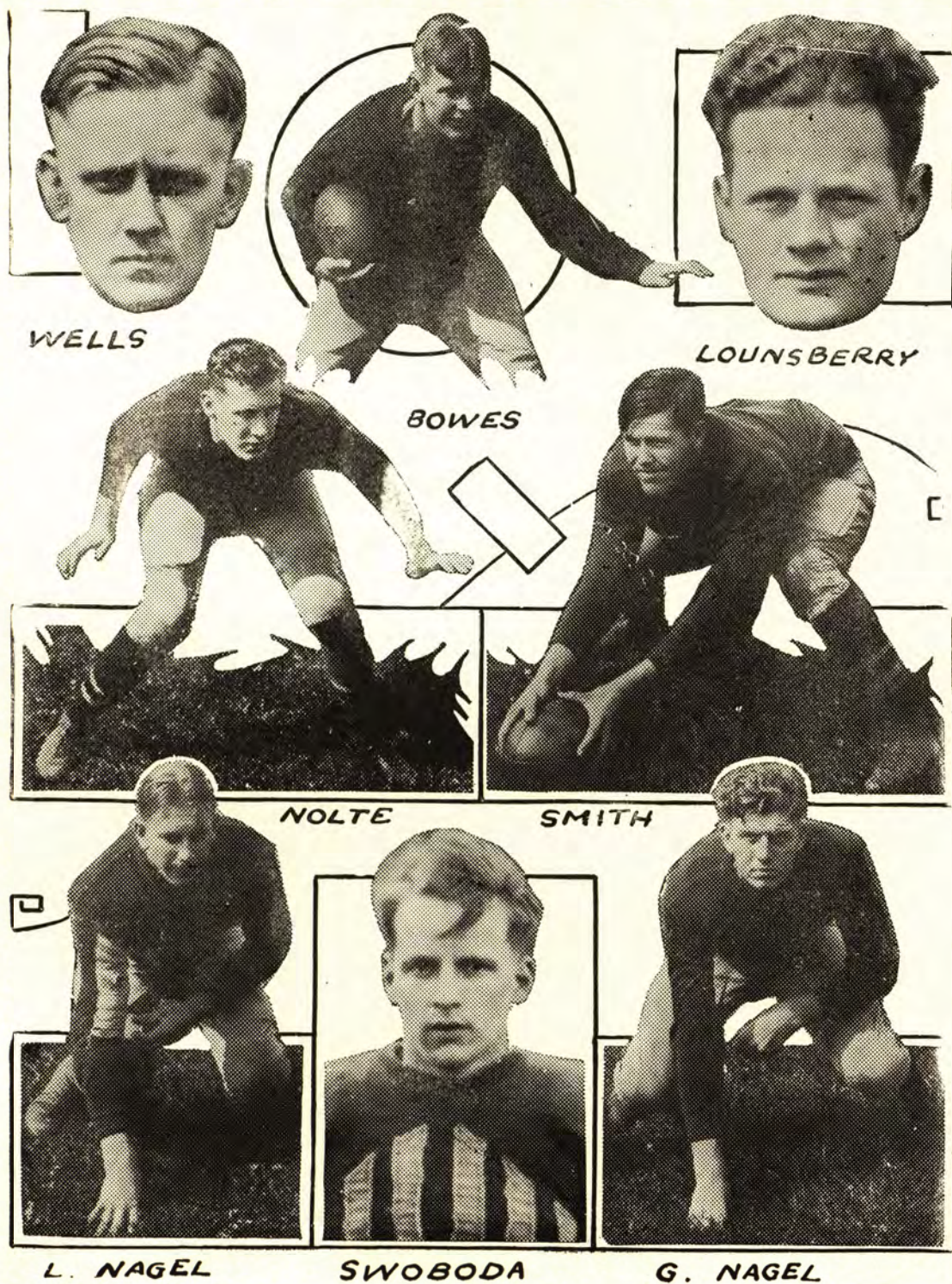
**Gilchrist
Coal & Feed Co.**
BLUE DIAMOND CHUNKS
ORIENT NUT COAL

The Quade Studio
Official Photographer for 1930
Bomb
417 Main St. - Phone 28

CHARLES G. RAY
JEWELER
319 Main St.
New Complete Stock



Iowa State Sophomores



WELLS

LOUNSBERRY

BOWES

NOLTE

SMITH

L. NAGEL

SWOBODA

G. NAGEL



Travel by Great Western

"... where you get the best meals ever served in a dining car . . . where you can sleep with perfect relaxation . . ."

To St. Paul-Minneapolis

Lv. Des Moines . . .	11:25 pm	7:00 am	6:10 pm	9:00 pm
Ar. Marshalltown . . .	1:07 am	8:52 am	8:20 pm	10:28 pm
Ar. Waterloo . . .	2:23 am	10:35 am	10:15 pm	11:41 pm
Ar. Rochester . . .	7:00 am	6:10 pm
Ar. St. Paul . . .	7:55 am	4:25 pm
Ar. Minneapolis . . .	8:35 am	5:00 pm

To St. Joseph-Kansas City

Lv. Des Moines . . .	7:20 am	12:20 am	11:40 am
Ar. St. Joseph . . .	11:25 am	5:10 am	4:55 pm
Ar. Leavenworth . . .	12:40 pm	6:35 am
Ar. Kansas City . . .	1:40 pm	7:35 am	7:05 pm

To Dubuque-Chicago

Lv. Des Moines . . .	9:00 pm	7:00 am	6:10 pm	11:25 pm
Ar. Marshalltown . . .	10:28 pm	8:52 am	8:20 pm	1:07 am
Ar. Waterloo . . .	11:41 pm	10:35 am	10:15 pm	2:23 am
Ar. Dubuque . . .	2:43 am	2:18 pm
Ar. Chicago . . .	7:35 am	8:35 pm

At Your Service

City Ticket Office
503 Locust Street, Phone 4-2056

Chamberlain Hotel Ticket Office
409 Seventh Street, Phone 4-4010

Union Station, 5th and Cherry Streets
Phone 4-9161

Chicago Great Western



DOTY



CAPT. ED SCHLENKER



KUBICEK

**THIS PAGE WAS DONATED BY THE FOLLOWING
100 Percent Boosters of the 1929 Football Team**

Physicians and Surgeons

Doctor Ben G. Budge
Doctor E. B. Bush
Doctor Earl Rice

Dentists

Doctor R. D. Feldman
Doctor Thomas L. Rice
Doctors Wilson & Buck
Doctor F. H. Waters

Life Insurance

H. F. Brown
S. A. Knapp
W. E. McDowell

Unclassified

Ames Veterinary Supply Co.
Athletic Drug Store
Dahl Tire Shop
Dragoun Transfer Co.
Dutch Bros. Motor Co.
Edwards Coal Co.
Hart Studio
Logsdon Dairy
Mathison Motor Co.
Osborn's
Palmer Plumbing Co.
Parsons Leather Goods
Quade Studio
Smith Studio

Memorial Union

An Impressive Memorial

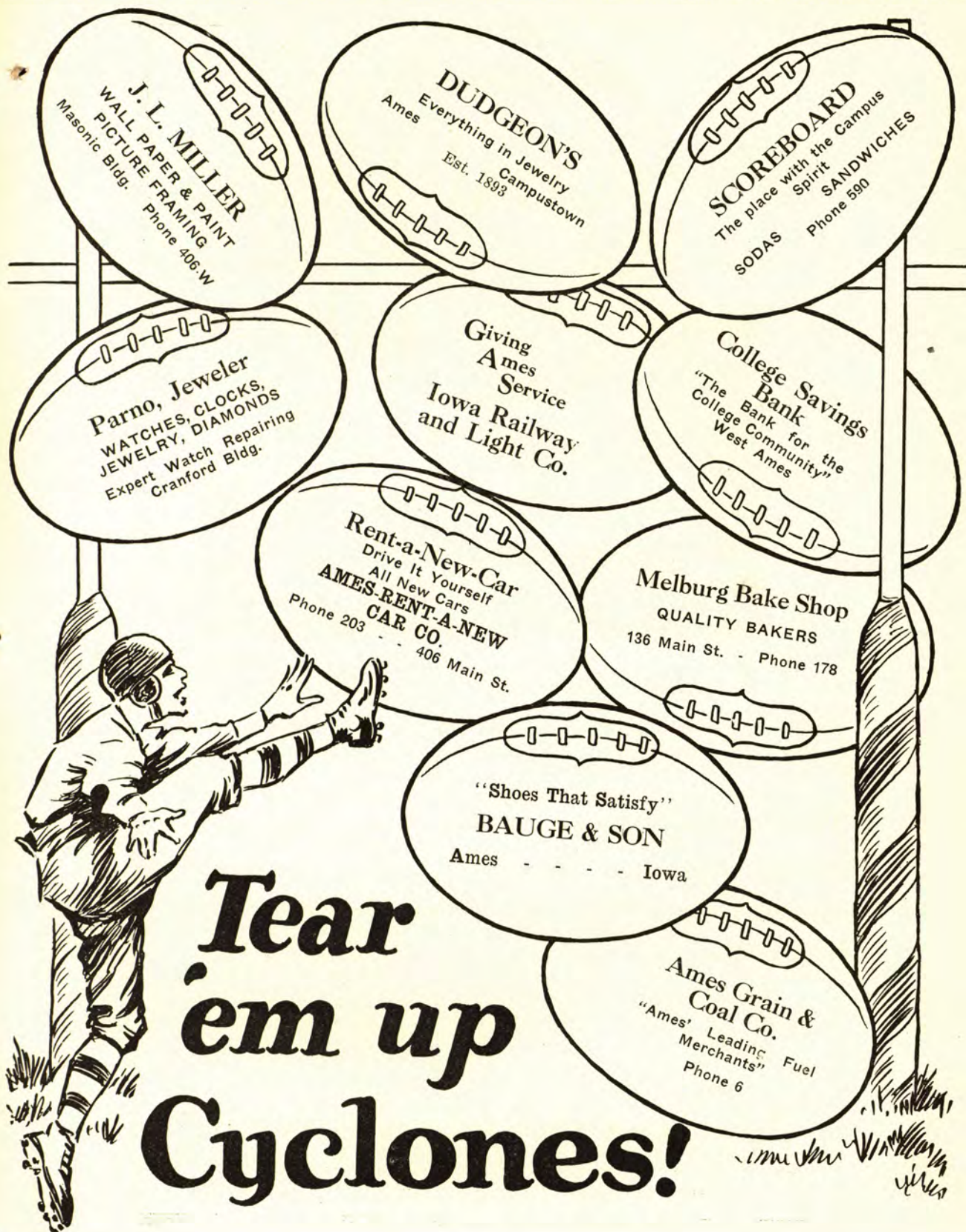
A Comfortable Service Building



Where good fellows get together after the game

Visit Gold Star Hall. Have a good dinner at The Commons or the Oak Dining Room before starting home. Dance in Great Hall this evening. Enjoy the comforts of the finest Union in the Middle West.

All students and most alumni are members of Memorial Union



J. L. MILLER
WALL PAPER & PAINT
PICTURE FRAMING
Masonic Bldg. Phone 406.W

DUDGEON'S
Everything in Jewelry
Ames Campustown
Est. 1893

SCOREBOARD
The place with the Campus Spirit
SODAS SANDWICHES
Phone 590

Parno, Jeweler
WATCHES, CLOCKS,
JEWELRY, DIAMONDS
Expert Watch Repairing
Cranford Bldg.

Giving
Ames
Service
**Iowa Railway
and Light Co.**

**College Savings
Bank**
"The Bank for the
College Community"
West Ames

Rent-a-New-Car
Drive It Yourself
All New Cars
**AMES-RENT-A-NEW
CAR CO.**
Phone 203 - 406 Main St.

Melburg Bake Shop
QUALITY BAKERS
136 Main St. - Phone 178

"Shoes That Satisfy"
BAUGE & SON
Ames - - - - Iowa

**Ames Grain &
Coal Co.**
"Ames' Leading
Merchants" Fuel
Phone 6

**Tear
'em up
Cyclones!**



THE LEADER

Of a Famous Fleet of Flying Trains

The finest train in the world

CORN KING LIMITED

OMAHA — SIOUX CITY — DES MOINES — CHICAGO

Chicago & North Western offers unrivalled service between Chicago, points in Iowa, Omaha, and the West. Ten splendid daily trains between Omaha and Chicago. Five to California. Two to the Pacific Northwest. Two to Colorado.

The "North Western" is the only double track railroad Omaha to Chicago and the only one protected all the way by Automatic Train Control.



M. J. GOLDEN, D. F. & P. A.
W. F. Winkrantz, General Agent
C. & N. W. Ry., 619 Locust St.
Des Moines, Ia.

CHICAGO &
NORTH WESTERN

The Best of Everything in the Best of the West

RAILWAY 808

Iowa State--Kansas Athletic Relations

Football—Iowa State has won three games, tied two and lost four. Kansas' last win was in 1921.

Basketball—Iowa State has won but four games out of 39 played. Last year we won 27 to 24 and lost 32 to 33.

Wrestling—Iowa State has won every one of its five dual wrestling meets with K. U. scoring a total of 97 points to Kansas' 13.

Baseball—Iowa State has won 10 and lost 21.

Cross Country—Kansas won the Conference Cross Country Run last year. This was the first time in 18 years that Kansas had placed ahead of Iowa State.

Indoor Track—Kansas has scored more points than Iowa State in six of the eight indoor Conference track meets.

Outdoor Track—Iowa State has placed ahead of K. U. in 10 of the 22 Outdoor Conference Track Meets.

Swimming—Kansas has never outpointed Iowa State in the Conference Swimming Meets.

To Be a Sure Winner on Every Occasion
DRESS WORK PLAY

Wear

BRANNBERG & ALM

FAMOUS FOOTWEAR CORRECTLY FITTED

315-317 Main St., Ames

Wilson-- Lindquist

DRY
CLEANERS

West Ames



DES MOIN
CANVAS
PRODUCTS
MAT
COVERS
ETC.

913 Walnut St.

S. A. KNAPP

*Prudential Insurance Co.
of America*

\$13,000,000.00
in force

Welcome, Alumni!

PALMER PLUMBING CO.

108 Hayward Avenue

Plumbing—Heating

Phone 1091

Welcome Alumni!

KIMLER COAL & ICE CO.

ICE COAL WOOD

Fuel Engineers

TUXEDO SUITS

For Sale and Rent

Latest Style and a Big Stock to
choose from at

HEDRICK'S CAMPUS
TOGGERY
West Ames

Big Six Record For 1929

Football

	W.	L.	T.	Pct.
Nebraska	5	0	0	1.000
Missouri	3	2	0	.600
Oklahoma	3	2	0	.600
IOWA STATE	2	2	1	.500
Kansas	1	3	1	.250
Kansas Aggies	0	5	0	.000

Swimming

	Points
IOWA STATE	54
Nebraska	46
Kansas Aggies	9
Kansas	6
Missouri	None
Oklahoma	None

Basketball

	W.	L.	Pct.
Oklahoma	10	0	1.000
Missouri	7	3	.700
Nebraska	5	5	.500
IOWA STATE	4	6	.400
Kansas Aggies	2	8	.200
Kansas	2	8	.200

Cross Country

	Points
Kansas	51
IOWA STATE	59
Nebraska	79
Oklahoma	85
Kansas Aggies	86
Missouri	131

Baseball

	G.	W.	L.	Pct.
Nebraska	15	10	5	.667
Kansas Aggies	13	8	5	.615
Missouri	13	8	5	.615
Oklahoma	11	5	6	.455
Kansas	13	4	9	.308
IOWA STATE	9	2	9	.222

Wrestling

	W.	L.	T.	Pct.
IOWA STATE	5	0	0	1.000
Oklahoma	4	1	0	.800
Nebraska	2	2	1	.500
Kansas Aggies	2	3	0	.400
Missouri	1	3	1	.250
Kansas	0	5	0	.000

Track

	Points
Nebraska	61 1/2
Oklahoma	46 2/3
IOWA STATE	41
Kansas	40 1/3
Missouri	31
Kansas Aggies	19 1/2

Tennis

	W.	L.	T.	Pct.
Oklahoma	5	0	0	1.000
Kansas	3	1	1	.750
Missouri	3	2	0	.600
IOWA STATE	2	2	1	.500
Nebraska	0	4	1	.000
Kansas State	0	4	1	.000

Indoor Track

	Points		Points
Oklahoma	39	Nebraska	16
IOWA STATE	36	Missouri	7
Kansas	16 1/2	Kansas Aggies	6 1/2

AMES PANTORIUM

E. M. KOOKER, Prop.

MASTER CLEANERS AND DYERS

Quick and Efficient Service

"Call for and Deliver"

410 DOUGLAS

Phone 231

AMES, IOWA

NEW STYLES
NEW COLORS
in

Dry Goods—Millinery
Ready-to-Wear
for Fall

You are always welcome

**SHIPLEY-PEDERSEN
COMPANY**

302 Main St. - - - - - Ames

ON THE GRIDIRON
AND IN BUSINESS

An Aim—a purpose—and rock-ribbed grit to
stick, win hard fought battles

**STORY COUNTY TRUST &
SAVINGS BANK**

Ames, Iowa

QUALITY--

Mr. Webster defines QUALITY as being something with excellence of character; thoroughbred; assumed or asserted rank; etc. QUALITY in merchandise means practically everything. When your daughter, sister, wife or mother makes a purchase at THE FAIR she receives something of quality in return, regardless of whether it's hosiery, millinery, corsets, lingerie, dry goods or notions. Your patronage is invited!

WE FEATURE QUALITY!

The Fair
AMES FOREMOST STORE

SPORT EQUIPMENT FROM AN ATHLETIC FAMILY



SPALDING made the first foot ball, the first basket ball, the first tennis ball, the first golf ball, the first pair of golf shoes ever made in this country. Spalding has been making authentic athletic equipment for 53 years.

No other Sport Equipment in the world has a background like this. You can choose your complete sport outfit with the comforting knowledge that everything is exactly right.

A. G. Spalding & Bros.

803 Locust St. - - - - -

Des Moines

The College Book Store

This store is run by the State for
your benefit.

Prices as low or lower than found in
any other store.
On the Campus

THE COLLEGE BOOK STORE

Ames Building Material Co.

114 Clark Ave.

Cement

Building Tile

Lime

Drain Tile

Plaster

Brick

Ben Cole & Son

General Contractors

Ames, Iowa

Welcome Homecomers

See us for anything in the
electrical line

Maytag Washing Machines
Frigidaire—the Automatic
Refrigerator

Premier, Duplex and General
Electric Vacuum Cleaners

Munn-Maytag Co.

Phone 500

Sheldon-Munn Building

The O'Shea Honor Sweater

We specialize in making Honor
sweaters for schools

Furnished in all standard school
colors

Special ten-day delivery

Chenille or Felt letters or em-
blems

O'Shea Knitting Mills

Athletic Knitted Wear for Every Sport

2414-24 North Sacramento Avenue

CHICAGO

Iowa State College Band



Send the Band to Nebraska

Don't miss the
Drake--Iowa State Game
AT AMES

Saturday, Nov. 16, 2 p. m.

Order your tickets now \$2.50

Home-Going is as Happy as Homecoming

If you're teamed with the Orient
for winter

Winter is waiting right now, to buck some cold weather over the line. And old Winter's team looks strong—with plenty of trick plays. They may leave you cold.

But if you team up with Orient, old Winter's strongest attack can't budge the warm defense of your Orient-heated home. Orient heats without a fumble. It leaves little ash, and NONE of those great-breaking clinkers. This coal comes from the very heart of Franklin County—the richest coal lands in Southern Illinois.

Orient is twice screened, spread thin, then picked over by men, keen-eyed as any coach.

Orient is as clean as a first-kicked pig-skin. It's as good as the thought that your team's winning.

Team with Orient right now, and you'll beat Winter every time this season.

Gilchrist Coal Co., Local Dealer

121 Kellogg

AMES, IOWA

Phone 232



Chicago, Wilmington & Franklin
Coal Company

"Printing of the Better Kind"

HOUSE PAPERS

MENUS

CARDS

DANCE PROGRAMS

CHRISTMAS CARDS

INVITATIONS

DODGERS

LABELS

PLACE CARDS

LEDGER SHEETS

RECORD CARDS

OFFICE SUPPLIES

FINE STATIONERY

ENGRAVING

BOOKS

CATALOGS

Tribune Publishing Company

316 Fifth Street

Phone 83

Ames Iowa

JOSTEN'S

Treasure-Craft Jewelers and Stationers



CLASS RINGS

FAVORS

STATIONERY

TROPHIES

MEDALS

STATUETTES

OWATONNA

MINNESOTA

A Touch of Autumn in the Air

The brisk and bracing winds of the fall, enjoyable as they may be out-of-doors, have no place inside the home.

Autumn's chills and winter's blasts can be kept in their place—outside the home—by satisfactory fuels.

Purity

Franklin County

A high quality, moderate priced coal, standard for many years in Ames.



Cinderella

West Virginia Splint

A household favorite in Iowa. Blocky, low in ash and high in heat.

These coals guarantee your winter comfort. Buy them from

Edwards Coal Co.

Phone 20

These Coals are mined by

Phone 20

Old Ben Coal Corporation

CHICAGO



LIQUA-SAN

The Liquid Soap-

Zef-ir Blocs Air Sweeteners

ACTUALLY overcome foul air conditions and keep the air pure as well as pleasing to the sense of smell. Several odors.

Use them in the athletic department, toilets, etc. Also effective in destroying and repelling moths. Put up in complete outfits guaranteed to last a year.



Zef-ir Crystals

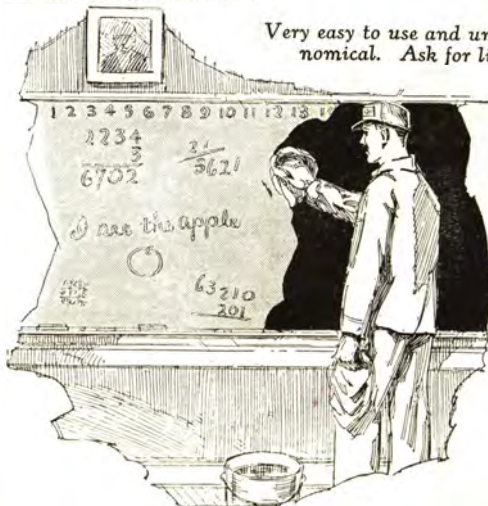
The same properties as Zef-ir Blocs but put up in crystal form in handy shaker top cans. May be sprinkled on floors, under seats and desks and wherever needed to overcome disagreeable air conditions



Sana-Board Black-Board Cleanser

A scientifically compounded blackboard cleanser that really keeps blackboards clean and black, thus preventing eye strain. Will not injure or gray the boards.

Very easy to use and unusually economical. Ask for literature.



Our Floor Department

We will gladly recommend the best cleanser for floors of any type. We manufacture Lino-San, Rex Pine Liquid Scrub Soap, Rex Potash Scrubbing Compound and Rex Cleaning Crystals, each of which is adapted to particular types of flooring and useful for general cleaning purposes as well. Tell us your problem.

The Huntington Laboratories

Incorporated
Huntington, Indiana

The cheer leader—

Camel

CIGARETTES

*More genuine pleasure . . . more
hearty cheer . . . Camel gains on
every play. Go into a huddle with
yourself and a pack of Camels . . .
and you're all set.*

