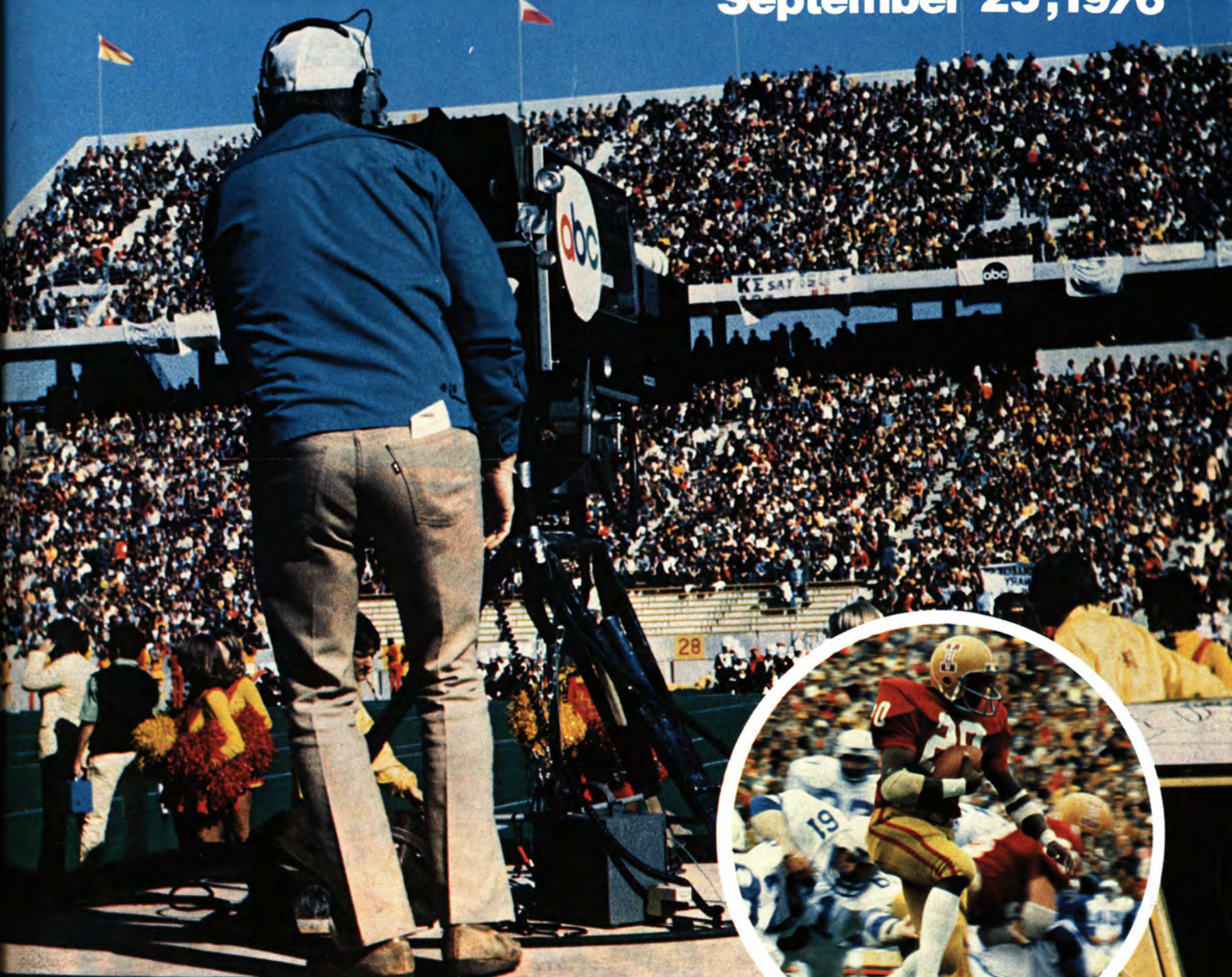


OVERLANDS '76

# IOWA STATE KENT STATE

September 25, 1976



One Dollar



# THE AMALGAMATED SPIRITS & PROVISION

Featuring-  
Alaska king crab,  
prime rib and steaks  
of highest quality.

Join us for lunch  
or dinner, seven nights  
a week.  
320 South 16th St.  
( just west of  
Warehouse Market )



PURVEYORS OF DISTILLED SPIRITS & FOODS OF HIGHEST QUALITY

## REFLECTIONS

AMES' FINEST NIGHTSPOT  
and DISCOTHEQUE

OPEN 6 NIGHTS A WEEK  
4 p.m. til closing —

OPEN at 10:30 a.m.  
GAME DAYS

414 Lincoln Way

Ames, Iowa



Ames, Iowa  
Gardena, California  
Roanoke, Virginia

# Collegiate Pacific



GO  
CYCLONES!



## Contents

ISU Administration	3
ISU Coaching Staff	5
ISU - Kent State Game Story	7
Swimmers Eye Repeat Championship	10
Big Eight Schedule	11
Cardinal and Gold Scholarship Contributors	14-15
State's 250 Club	17
Multi-Sports Athletes	18-19
Cyclones	25-30
ISU Roster	32
Starting Lineups	Center Spread
Kent State Roster	33
About Kent State University	36
Kent State Coaching Staff	37
Golden Flashes	38-39
Cyclone Century Club	41-44
ISU Athletic Department	63

### Today's Guests

Employees and their families of the Miracle Equipment Co. of Grinnell are guests of the ISU Athletic Department today.



# The 1976 Earle Bruce Show

Tune in each week during the season for exciting film highlights of the game . . . plus commentary and color on the week's action from Coach Earle Bruce and Sportscaster Pete Taylor.

A presentation of



Bankers Trust

**KCCI-TV Des Moines 10:30 PM Sundays**  
**KCAU-TV Sioux City 10:30 PM Sundays**  
**KGLO-TV Mason City 10:30 PM Mondays**





# ADMINISTRATION



**DR. W. ROBERT PARKS**  
President  
Iowa State University



**JOHN MAHLSTEDE**  
Chairman, Faculty  
Representative to the  
Big Eight Conference



**LOU McCULLOUGH**  
Director of Athletics  
Iowa State University



**BOB MARCUM**  
Associate  
Director of Athletics



**MAX URICK**  
Assistant  
Director of Athletics

## BOARD of REGENTS

Front Row: S.J. Brownlee, Steve  
E. Zumbach, Donald H. Shaw,  
John Baldridge. Back Row: Ray  
Bailey, Mrs. Robert Collison, Mrs.  
H. Rand Petersen, Harry Slife,  
Stanley Barber.







Be sure to stop in and see our beautiful painted mural of the Iowa State Center.

**For 60 consecutive football seasons**  
**The UNIVERSITY BANK "TEAM" has enjoyed**  
**serving Iowa State students, faculty and staff.**  
**To Coach Earle Bruce and his team**  
**go our best wishes for the 1976**  
**Cyclone Football Season!**



# UNIVERSITY

**BANK AND TRUST COMPANY**

MEMBER F.D.I.C.

CAMPUSTOWN/LINCOLN WAY AT HAYWARD AVENUE ■ DOWNTOWN/MAIN STREET AND GRAND AVENUE

# BENSON MOTORS



**OPEL**



**Jeep**



**NEW CARS — 5th and Douglas**

**USED CARS — 228 South Duff**



# CYCLONE COACHING STAFF



Front Row (l to r) Pete Rodriguez, Tom Lichtenberg, Earle Bruce, Randy Hart and Bob Tucker.  
Back: Jim Williams, Tom Vaughn, Charlie Lyle, Glen Mason and Keith Kephart.

**Head Coach Earle Bruce** is in his fourth year at Iowa State and after over 20 years of coaching on the high school and collegiate levels is recognized as one of the finest coaches in the business.

Bruce, who last January coached the East team to a 16-0 win in the Hulu Bowl for the first shut-out in 30 years, was three times the Ohio prep "Coach of the Year" before becoming an assistant at Ohio State. He became head coach at Tampa in 1972 and led the Spartans to a 10-2 record and bowl victory.

**Pete Rodriguez** is in his first year as defensive coordinator and linebacker coach. He came to ISU from Florida State, where he had the same responsibilities. Rodriguez has a top coaching background, working at Arizona and going to the Sun Bowl and spending five years at Western Illinois and going 39-13. He is a graduate of Western State in Colorado and coached two years in the Colorado prep ranks.

**Tom Lichtenberg** coaches the Cyclone quarterbacks and wide receivers. He is in his third year on the staff after coaching at Morehead (Ky.) State and spending 13 years in the Ohio prep ranks. He is a 1962 graduate of Louisville.

**Randy Hart** directs the ISU defensive tackles and middle guards, his third year with those duties after coaching the freshman team for one season. He had previously coached at Tampa for one year. He is a 1970 graduate of Ohio State and has played in the Rose Bowl.

**Bob Tucker** coaches the defensive ends at Iowa State and is one of the original members of Bruce's ISU staff, coming in 1973 after four years at Wichita State. He is a 1965 graduate of Wooster College and coaches Ohio high school football before moving to Wichita.

**Jim Williams** begins his first year on the Iowa State staff after becoming the most successful coach in Iowa high school history. In 12 years at Des Moines Dowling High, Williams led the Maroons to a 105-9-1 record and earned numerous coaching honors. His overall prep record, including stays at Audubon and East Dubuque, Ill., is 181-21-3. Dowling never lost a Metro-Conference game under Williams (56-0) and once had a 47-game winning streak.

**Tom Vaughn**, a former All-America at Iowa State in 1964, is in his second year as coach of

the ISU running backs. Vaughn spent seven years in the NFL with the Detroit Lions before joining the coaching ranks with Wayne State University and the Detroit Wheels of the WFL. Also an academic All-America during his playing days, Vaughn is considered by many to be the best all-around back in school history.

**Charlie Lyle** coaches the Cyclone secondary, his fifth year on Bruce's staff and fourth year at Iowa State. A 1962 graduate of Tampa, Lyle coached in the Florida high school ranks before moving to Tampa as the secondary coach. His Spartan unit ranked nationally.

**Glen Mason** is in his second year at Iowa State as the offensive tackle and tight end coach. Mason came to ISU from Ball State and has also coached at Allegheny College. He is a 1971 graduate of Ohio State, playing on Big Ten title teams.

**Keith Kephart** has been on the ISU staff since 1968 and is in his third year of the junior varsity head coach. The 1966 graduate of Dubuque has also played a major role in the Cyclones' recruiting efforts since his arrival and was the recruiting coordinator for several years.



# **DES MOINES, IOWA**

**PROUD HOME OF CYCLONES  
MARK WILLIAMS AND MIKE SCHWARTZ**



20 -MIKE SCHWARTZ • 16 -MARK WILLIAMS

**THESE FOLLOWING DES MOINES BOOSTERS ARE BACKING  
THE 1976 IOWA STATE CYCLONES ———**

**PLASTIC SUPPLY, INC.**  
Chuck Irvine

**DES MOINES COLD STORAGE CO.**  
Chuck Muelhaupt

**GIBBS/COOK**

**JACOBSON WAREHOUSE COMPANY**  
Dick Jacobson-Larry Larson

**CONTRACTORS STEEL CORPORATION**  
Warren Sparks

**MASSEY-FERGUSON INC.**

**MID-CONTINENT BOTTLERS**

**BOB BROWN CHEVROLET**

**DES MOINES AGENCY--EQUITABLE OF IOWA**  
Jack Hilmes

**MAINLINE EQUIPMENT COMPANY**  
Nick Dozoryst



# Iowa State Kent State

**Saturday, September 25, 1976**

Ames, Iowa



## Cyclones Test Kent Defense

Something has got to give this afternoon when Iowa State's high-flying offense tangles with Kent State's stingy defense.

The Cyclones enter the game as the nation's scoring leader with a hefty 99 points in two games. Iowa State bombed Drake, 58-14, on this field two weeks ago and last week zipped by Air Force, 41-6.

Kent State, a member of the highly regarded Mid-America Conference, comes to Ames with a 1-1 mark -- having beaten Central Michigan, 20-10 in its opening game and losing a hard-luck 14-12 game last week to Ohio.

The Golden Flashes are proud of their defensive unit, which in two games has allowed just one sustained drive for a touchdown and has yet to allow a touchdown pass. It certainly played well enough to win a week ago but a costly fumble on the one yard line all but gave Ohio one of its two scores.

The Cyclones have had exceptional success with their new-found passing attack. Quarterback Wayne Stanley, the Big Eight "Player of the Week" for his showing at Air Force, has hit on 13 of 18 passes for 299 yards and seven touchdowns. Super-sub Buddy Hardeman has played equally well and has connected on six of 12 passes for three more scores.

That adds up to 10 touchdowns in 30 passing attempts and 19 completions -- a remarkable average. And the part that Coach Earle Bruce likes best is that there have been no interceptions.

The receivers have been led by tight end Al Dixon with seven catches and three touchdowns. Luther Blue is right behind with five grabs and three scores and Ray Hardee has four receptions and two touchdowns.

The Cyclones have not been completely satisfied with their running game but the youthful likes of Dexter Gren, Cal Cummins, Jeff Curry and Frank Cooper are expected to improve with each game. Hardeman leads the rushers with 114 yards in just seven carries.

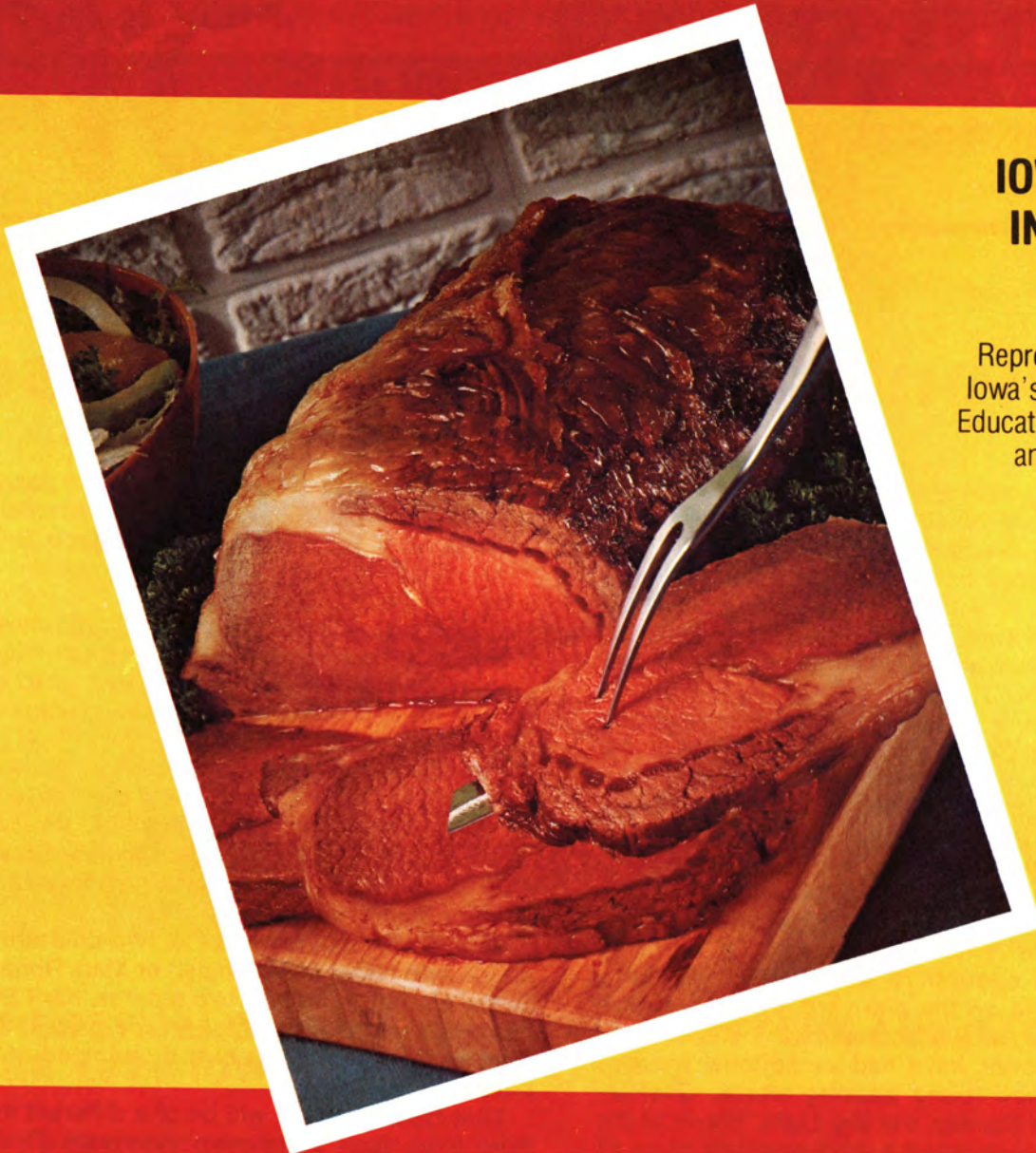
Kent State also employs a two-quarterback attack with either Mike Whalen or Mark Rohalley as the starter. In its first two outings, Kent State has relied on the running of Andy Ferree and Art Best as its main weapon and sprinkled in the pass with success.

That type of attack will be of a different mold from Iowa State's first two opponents. Drake's Jeff Martin entered the ISU game with a 318 yard passing game and Air Force's Rob Shaw had thrown for 314 yards in his first game against Pacific.



# **BEEF** UP YOUR OWN TRAINING TABLE

SERVE FLAVORFUL IOWA CORN-FED BEEF



## **IOWA BEEF INDUSTRY COUNCIL**

Representing all of  
Iowa's Cattlemen in  
Education, Research  
and Promotion.

**Jim Mullins**  
Chairman

# **GO CYCLONES**



# ISU Alumni Elect Officers

James H. Boyd of Marshalltown has been elected president of the Iowa State University Alumni Association for the 1976-77 academic year by the association's board of directors.

Boyd, a 1938 mechanical engineering graduate of ISU, headed a slate of three new Alumni Association board officers and five new board members who were elected during Alumni Leadership Day activities on the ISU campus last weekend.

Boyd, senior vice president of operations for Fisher Controls Company of Marshalltown, succeeds Dorothy K. Pecaut of Sioux City as president of the ISU Alumni Association.

Other new officers are Marvin J. Walters of Ames, vice president and president-elect, and Rita K. Frevert of Webster City, secretary. Walters, who received bachelor's and master's degrees from Iowa State in 1962 and 1964, is founder and president of Carriage House Meat and Provision Co. of Ames. Frevert, who received her master's degree from ISU in 1968, is a former teacher and guidance counselor who now serves as director of volunteers for the

Hamilton County Juvenile Probation Services.

Newly elected to the Alumni Association's board of directors are Marney Beemer of Corning, Beverly Everett of New Sharon, and Charles J. Maxwell of Des Moines, all elected to five-year terms, and Willard C. Latham of Alexander, elected to a three-year term. Rita K. Frevert was re-elected to a second three-year term on the board.

Beemer, a 1942 graduate of ISU, is a homemaker and community and civic worker; Everett, who received her bachelor's degree from Iowa State in 1947, is a homemaker, teacher, lecturer and writer; Maxwell, a 1956 ISU graduate, is sales manager for Connecticut General Life Insurance Co., and Latham, who graduated from Iowa State in 1936, is a farmer and seed producer.

The 21-member board of directors establishes policy for the ISU Alumni Association, a service organization of 21,287 Iowa State University alumni which benefits the University and its alumni. Forty of the association's 80 alumni clubs, or chapters, are in Iowa.

## Iowa Pork and Iowa State



Cyclone football players know that the "pigskin" is a tough and durable ball that can stand up to a lot of hard wear.

They also know that pork provides the kind of nutrition that will help them stand up to some hard work.

**THAT'S WHY PORK IS A FAVORITE MEAT ON THE ISU TRAINING TABLE!**

That's right . . . athletic trainers and nutritionists throughout the country are depending on today's high-quality lean pork to provide many essential elements and basic proteins that are required for strong and healthy bodies . . . without adding lots of fat forming calories.



**FOOTBALL PLAYERS TRAIN ON PORK  
WHY DON'T YOU  
LOW ON CALORIES, HIGH IN NUTRITION, GREAT IN TASTE.  
PORK**



## A Cyclone Preview . . . .

# Swimmers Eye Repeat Championship

Jack McGuire has seen his Cyclone swimming teams win eight Big Eight Conference championships over the years and the last one was just last March in Beyer Hall.

Iowa State bumped Oklahoma and Kansas by a comfortable margin and things look brighter than ever for 1976-77 as just 33 of the 393 points earned in that championship are lost this season.

"This is a great squad," says McGuire proudly. "They have talent, they have high morale and they are a wonderful bunch of kids to coach. I really look forward to this season."

And why not? Of the 33 "missing" points, diver Larry Miller accounted for 21 and McGuire feels he has more than adequate replacements for him. There are 16 returning lettermen and every one placed in the Big Eight meet. There are seven freshmen, three perhaps with a blue-chip tag, who are expected to help.

Discussion of individuals must start with senior star Jon Mixdorf, the Cedar Falls product who last year won the league's outstanding swimmer in winning the 100 and 200 yard butterfly events, swimming on the winning 400 medley relay team and setting a Big Eight record in the 50 yard freestyle.

Mixdorf, who McGuire says is "national title timber" this year, placed in the national AAU championships and competed in the Olympic try-out camp.

The Cyclones have a host of other title contenders, veterans like diver Bill Luterbach; freestylers Dexter MacBride and Mark Barnett; individual medley aces Kirk Jones and Mark Croshier and breast stroke specialist Bob Vanderloo. Drew Waldon is considered in Mixdorf's class in the butterfly and there are others.

McGuire is pleased with his freshman class -- headed by Steve Hugo of Mason City, Jay Leigh of Fargo, N.D., and Mark Clark of Lenexa, Kan. -- all considered their state's top prep swimmer last year. Other frosh to watch include Mark Noller of Muscatine, Scott Bovard of Mason City, Ron Perrington of Des Moines Hoover and Don Haase of Davenport West.

"Our first goal is the conference championship," McGuire says, "but one of our goals is to place in the NCAA meet. We haven't done this for a while but this year I think we can."



Coach Jack McGuire and Jon Mixdorf admire the 1976 Big Eight trophy.



# BIG 8 CONFERENCE

# football schedule

## 1976 "BIG EIGHT" STANDINGS

### ALL GAMES

Team	W	L	T
Kansas	3	0	0
Iowa State	2	0	0
Oklahoma	2	0	0
Nebraska	1	0	1
Missouri	1	1	0
Oklahoma State	1	1	0
Colorado	1	1	0
Kansas State	1	1	0

### CONFERENCE

Team	W	L	T
Oklahoma	0	0	0
Nebraska	0	0	0
Colorado	0	0	0
Kansas	0	0	0
Oklahoma State	0	0	0
Missouri	0	0	0
Iowa State	0	0	0
Kansas State	0	0	0



## 1976 Games and Scores

### SEPTEMBER 4

Kansas 28 Oregon State 16

### SEPTEMBER 11

**DRAKE 14 IOWA STATE 58**

Brigham Young 3 Kansas State 13

Tulsa 21 Oklahoma State 33

Colorado 7 Texas Tech 24

Washington State 16 Kansas 35

Missouri 46 USC (N) 5

Nebraska 6 Louisiana State (N) 6

Oklahoma 24 Vanderbilt 3

### SEPTEMBER 18

**IOWA STATE 41 AIR FORCE 6**

Kansas State 14 Texas A&M 34

Okla. State 10 Ark. 16

Colorado 21 Washigton 7

Kentucky 16 Kansas 38

Illinois 31 Missouri 6

Nebraska 45 Indiana 13

California 17 Oklahoma 28

### SEPTEMBER 25

**KENT STATE AT IOWA STATE**

Wake Forest at Kansas State

Miami(Fla.) at Colorado

Missouri at Ohio State

Texas Christian at Nebraska

Florida State at Oklahoma

### OCTOBER 2

**OKLAHOMA AT IOWA STATE**

Kansas St. at Florida St. (N)

N. Texas State at Okla. St.

Drake at Colorado

Wisconsin at Kansas

N. Carolina at Missouri

Miami (Fla.) at Nebraska

### OCTOBER 9

**UTAH AT IOWA STATE**

Missouri at Kansas State

Kansas at Oklahoma State

Nebraska at Colorado

Oklahoma vs. Texas at Dallas

### OCTOBER 16

**IOWA STATE AT MISSOURI**

Kansas State at Nebraska

Colorado at Oklahoma State

Oklahoma at Kansas

### OCTOBER 23

**IOWA STATE AT COLORADO**

Kansas at Kansas State

Oklahoma State at Oklahoma

Missouri at Nebraska

### OCTOBER 20

**KANSAS STATE AT IOWA STATE**

Missouri at Oklahoma State

Oklahoma at Colorado

Nebraska at Kansas

### NOVEMBER 6

**IOWA STATE AT KANSAS**

Kansas State at Oklahoma

Oklahoma State at Nebraska

Colorado at Missouri

### NOVEMBER 13

**NEBRASKA AT IOWA STATE**

Oklahoma St. at Kansas St.

Kansas at Colorado

Missouri at Oklahoma

### NOVEMBER 20

**IOWA STATE AT OKLAHOMA ST.**

Colorado at Kansas State

Kansas at Missouri

### NOVEMBER 26

Oklahoma at Nebraska (T-V)

### NOVEMBER 27

Okla. St. at Texas-El Paso

### DECEMBER 4

Nebraska at Hawaii(N)



# Looking for a bank?

## LOOK TO THE **FIRST!**



Member Federal Reserve System  
and Federal Deposit Insurance  
Corporation.

# 1<sup>st</sup>

## FIRST NATIONAL BANK

AMES, IOWA

2320 LINCOLN WAY  
232-6530

5th & BURNETT  
232-5561

### GO CYCLONES!



# Hy-Vee

FOOD STORES

**AMES, IOWA**

**DOWNTOWN - 207 SO. DUFF**

OPEN 7 A.M. - MIDNIGHT

**CAMPUSTOWN - 112 SO. SHELDON**

OPEN 8 A.M. - MIDNIGHT



# AMES, IOWA

— HOME OF THE  
IOWA STATE  
CYCLONES

and  
MIKE TRYON  
Quarterback

THESE AMES BOOSTERS PROUDLY SUPPORT THE 1976 CYCLONES

Severson Insurance Agency  
The Athletic Shoe  
Ames Building and Loan  
Paul R. Jones Heating and Cooling  
Dale Tryon Real Estate  
Sevde Transfer and Storage

Shaughnessy's Carpet and Drapery  
Ev Cochrane Life Insurance  
Bledsoe's  
The Den  
Aunt Maude's  
Mayfair Cleaners



# CARDINAL and GOLD Scholarship Program

## The Gold Full Scholarship Donors

CLINTON J. ADAMS  
Ames  
AMES ADVERTISER  
Ames  
AMES DAILY TRIBUNE  
Ames  
DR. RUSSELL H. ANTHONY  
Ames  
A & W RESTAURANT  
Ames  
RALPH AULMANN  
Memorial Scholarship  
Des Moines  
AUNT MAUDE'S  
Ames  
DR. WILLIAM BAIRD  
Ames  
ROBERT BARBER  
Cedar Rapids  
DR. WILLIAM BARNETT  
Ames  
JAMES W. BELL CO.  
Cedar Rapids  
FRANCE BETTEN  
TRANSPORTATION CO.  
Ames  
CARL BLEUDORN  
Waterloo  
LLOYD and ADA BOCK  
Des Moines  
BOB BROWN  
CHEVROLET, INC.  
Des Moines  
DR. JAMES A. BUCK  
Ames  
WILLIAM W. BURRELL  
Des Moines  
WILLIAM E. CATRON  
Swanland, Ga.  
CESSFORD  
CONSTRUCTION CO.  
LeGrand  
CORN STATES METAL  
FABRICATORS, INC.  
Des Moines  
RICHARD L. COX  
Ames  
DES MOINES ASPHALT  
& PAVING  
Des Moines  
DES MOINES COLD  
STORAGE CO.  
Des Moines  
DES MOINES REGISTER  
& TRIBUNE  
Des Moines  
DR. JOHN DORAN  
Ames  
E. M. DUSENBERG, JR.  
Des Moines  
ECONOMY FORMS  
CORPORATION  
Des Moines  
RAY A. ENGEL  
Marshalltown  
EVERDS BROTHERS INC.  
Algona  
FEED SPECIALTIES CO.  
Des Moines  
FEILEN MEAT COMPANY  
Des Moines  
FIRST NATIONAL BANK  
Ames  
DR. TOM GARTIN  
Ames  
GIBBS - COOK  
EQUIPMENT CO.  
Des Moines  
ED GLAZER  
Des Moines  
GOMACO, INC.  
Ida Grove  
GREEN  
CONSTRUCTION CO.  
Des Moines  
R. E. GRIMM  
Slater  
RAYMOND HAGIE  
Clarion  
HARDEE'S RESTAURANTS  
Ames-Boone  
CHARLES HERBERT  
and ASSOC.  
Des Moines  
H.R. HILSTROM  
Sycamore, Ill.  
HOAK CONSTRUCTION CO.  
Des Moines  
ROBERT HOLLWAGER  
Des Moines  
HERMAN T. AND  
MARGARET R. HOLMES  
Newton  
T.J. HOLMES  
Dayton, Ohio  
HUMBOLDT TRUST  
& SAVINGS  
Humboldt  
IOWA - DES MOINES  
NATIONAL BANK  
Des Moines  
KARN'S & ASSOCIATES  
Ames  
KENWORTH  
MID-IOWA, INC.  
Des Moines  
KENTON  
CONSTRUCTION CO.  
Des Moines  
KNAPP-TEDESCO  
INSURANCE AGENCY  
Ames  
MICHAEL D. LARSON  
Des Moines  
MCANNICH CORP.  
Norwalk  
MASSEY-FERGUSON, INC.  
Des Moines  
RICHARD W. MAWE  
Manchester  
MID-CONTINENT  
INDUSTRIES, INC.  
Des Moines  
MIDLAND UNITED  
DAIRY INDUSTRY ASSOC.  
Ankeny  
MIDWEST INDUSTRIES  
Ida Grove  
MIRACLE EQUIPMENT  
COMPANY  
Orion  
NADEN INDUSTRIES  
Weber City  
FRED NESBIT DIST. CO.  
Des Moines  
ARTHUR H. NEUMANN  
& BROS., INC.  
Des Moines  
NEVO MEAT COMPANY  
L.E. NEKOLA  
EMIL VOTROUSEK  
Cedar Rapids  
RALPH OLSEN  
Elsworth

## The Cardinal Half Scholarship Donors

AID INSURANCE  
SERVICES  
Des Moines  
ALLAN MACHINE &  
SUPPLY, INC.  
Ames  
AMERICAN FEDER.  
SAVINGS & LOAN  
Des Moines  
AMERICAN REPUBLIC  
INSURANCE CO.  
Des Moines  
AMES MILLWORT &  
SUPPLY CO.  
Ames  
KENNETH R. AUST  
Des Moines  
BANKER TRUST  
COMPANY  
Des Moines  
TACO JOHN'S OF IA, INC.  
Des Moines  
JAMES THOMPSON  
& SONS  
Ames  
DWIGHT L. TYRRELL  
Belmond  
UNION STORY TRUST  
& SAVINGS BANK  
Ames  
UNIVERSITY BANK  
& TRUST  
Ames  
VAN BUSKIRK  
CONSTRUCTION CO.  
Sioux City  
VAWTER & WALTER INC.  
Des Moines  
DR. DALE WASSMUTH  
Sioux City  
WILSON CONCRETE CO.  
Red Oak  
H.D. "PETE" WILSON  
Manchester  
FRED WINKLER & SONS  
Ames  
WORLD WIDE TRAVEL  
CENTER  
DEAN and JO KRUSDON  
Sioux City  
ROBERT A. WRIGHT  
Ida Grove  
YOUNKER BROTHERS  
Des Moines  
DR. DANIEL M.  
YOUNGBLADE  
Weber City  
BRUCE YUNGGLAS  
Webster City  
ZEIDLER, INC.  
Waterloo  
A Friend of the  
CYCLONES  
A Friend of the  
CYCLONES  
AID INSURANCE  
SERVICES  
Des Moines  
ALLAN MACHINE &  
SUPPLY, INC.  
Ames  
AMERICAN FEDER.  
SAVINGS & LOAN  
Des Moines  
AMERICAN REPUBLIC  
INSURANCE CO.  
Des Moines  
AMES MILLWORT &  
SUPPLY CO.  
Ames  
KENNETH R. AUST  
Des Moines  
BANKER TRUST  
COMPANY  
Des Moines  
TACO JOHN'S OF IA, INC.  
Des Moines  
JAMES THOMPSON  
& SONS  
Ames  
DWIGHT L. TYRRELL  
Belmond  
UNION STORY TRUST  
& SAVINGS BANK  
Ames  
UNIVERSITY BANK  
& TRUST  
Ames  
VAN BUSKIRK  
CONSTRUCTION CO.  
Sioux City  
VAWTER & WALTER INC.  
Des Moines  
DR. DALE WASSMUTH  
Sioux City  
WILSON CONCRETE CO.  
Red Oak  
H.D. "PETE" WILSON  
Manchester  
FRED WINKLER & SONS  
Ames  
WORLD WIDE TRAVEL  
CENTER  
DEAN and JO KRUSDON  
Sioux City  
ROBERT A. WRIGHT  
Ida Grove  
YOUNKER BROTHERS  
Des Moines  
DR. DANIEL M.  
YOUNGBLADE  
Weber City  
BRUCE YUNGGLAS  
Webster City  
ZEIDLER, INC.  
Waterloo  
A Friend of the  
CYCLONES  
A Friend of the  
CYCLONES  
CONTRACTOR STEEL  
CORP.  
Des Moines  
CONNIE FURS  
Des Moines  
THEODORE M. COX  
Des Moines  
GRVILLE E. CROWLEY  
Des Moines  
DR. CHAS. M. CUMMING  
Ames  
W.T. DAHL  
Des Moines  
DES MOINES  
FLYING SERVICE  
Des Moines  
DEWITT  
IMPLEMENT CO.  
Ogden  
BITCH SWITCH-IOWA, INC.  
Des Moines  
LYNN W. EASTER  
Des Moines  
D. ROBERT EDDY  
Des Moines  
EL PRITO PIZZA  
Ames  
EMPLOYERS MUTUAL  
COMPANIES  
Des Moines  
FELDMAN, WALSH  
& STOWELL DENTAL  
OFFICES  
Ames  
MAURICE FIELD  
Woodland  
FLETCHER - MOIST & CO.  
Des Moines  
FRUEHAUF CORPORATION  
Des Moines  
FULTZ, LUCAS  
and GREENLEE, INC.  
Des Moines  
GENERAL GROWTH  
DEVELOPMENT  
CORPORATION  
Des Moines  
GETHMANN  
CONSTRUCTION CO., INC.  
Marshalltown  
JOHN T. GILBERT  
Des Moines  
GIELLEFELD  
ASSOCIATES, INC.  
Forest City  
B.C. GRANGAARD  
Des Moines  
DEANE GUNDERSON  
Halle  
JOHN R. HAGIE  
Clarion  
HARRIS TV & APPLIANCE  
Ames  
HICKLIN GM DIESEL, INC.  
Des Moines  
JACK HILMES  
Des Moines  
HOLMES MURPHY  
& ASSOC.  
Des Moines  
HOME FURNITURE  
& APPLIANCE  
Ames  
GEORGE A. HORMEL  
Fort Dodge  
DEAN HUNZIKER  
Ames  
L.A. HUNZIKER  
Ames  
INTERNATIONAL  
HARVESTER COMPANY  
Kansas City, Missouri  
IOWA CONCRETE  
PRODUCTS  
Cedar Falls  
IOWA CORN  
BY-PRODUCTS CO.  
Cedar Rapids  
IOWA MANUFACTURING  
COMPANY  
Cedar Rapids  
IOWA POWER & LIGHT CO.  
Des Moines  
IOWA REALTY  
Des Moines  
JACKSON CONSTRUCTION  
COMPANY  
Nevada  
JENNINGS AGENCY  
Des Moines  
JENSEN CONSTRUCTION  
Des Moines  
KENDALL, GRIFFITH,  
RUSSELL, LATTINGA  
Des Moines  
KOURI, JONES, ANDERSON  
Des Moines  
MELVIN LANG  
Des Moines  
H. K. LARSON  
Ames  
JORDAN L. LARSON  
Ames  
CHARLES O. LAVERTY  
Indianola  
RICHARD S. LEVITT  
FOUNDATION  
Des Moines  
MAINLINE EQUIPMENT  
COMPANY  
Des Moines  
MARTIN MACIETTA  
AGGREGATES  
Cedar Rapids  
RANDALL and RUTH  
MATSON  
Ames  
SUNRISE DAIRY, INC.  
Des Moines  
SYSTEMS MANAGEMENT  
& BALANCING, INC.  
Des Moines  
THERMO-KING  
Des Moines  
GARY THOMPSON OIL CO.  
Ames  
ALAN TIEFENTHALER  
Breda  
TODD and  
SARGENT, INC.  
Ames  
HAROLD L. TOMPKINS  
Cedar Falls  
TUTTLE'S GAS AND  
APPLIANCE, INC.  
Ames  
UNITED FEDERAL  
SAVINGS  
Des Moines  
WAREHOUSE CARPET  
SALES  
Ames  
WARREN  
TRANSPORT, INC.  
Waterloo  
WENDY'S  
Ames  
J. C. WHITE  
EXCAVATING COMPANY  
Des Moines  
WILKINS, RUSSELL  
& SONS  
Des Moines  
GEORGE WILLIAMS  
Marshalltown  
JAN & WAYNE WILSON  
Ames  
L.S. "BUD" WOOD  
Weber City  
A FRIEND OF THE  
CYCLONES  
A FRIEND OF THE  
CYCLONES  
SHARPE MECHANICAL, INC.  
Des Moines  
JOHN SHIMON  
Ruffs  
BERNARD C. SIMMONS  
Waterloo  
STARLITE VILLAGE  
& RESTAURANT  
Fort Dodge  
STEEL  
WAREHOUSING, INC.  
Des Moines  
SUNDSTRAND  
HYDRO-TRANSMISSION  
Ames

IOWA STATE  
UNIVERSITY

Department of  
Intercollegiate  
Athletics

## THE CARDINAL AND GOLD SCHOLARSHIP PROGRAM



Hundreds of student-athletes have had their education at Iowa State University financed through contributions of Cyclone Club members. More and more, the success of major college athletic programs is dependent upon the financial support of alumni and friends. The Iowa State University Department of Intercollegiate Athletics is proud to honor the individuals and firms on these pages who have contributed one or more \$1,000 Gold Full Scholarships or \$500 for a Cardinal Half Scholarship.

Mal Schmidt





## FIREPLACES



**heatilator®**

Gas Logs & Accessories



## MASONRY MATERIALS

Brick • Block • Stone  
Colored Cement



## RAILROAD MATERIALS

Rails  
Ties (New & Used)



## STEEL PRODUCTS

Rebar • Wire Mesh  
Nails • Fence Material  
Masonry Wall  
Reinforcement



## GRAROK

Mortar Mix Manufacturer



# D.A. Wilson COMPANY

AMES, IOWA 50010

(HOME OFFICE)

(515) 233-2436

• DES MOINES, IOWA

(515) 282-6634

*Material Supply Specialists*

"SERVING IOWA AND THE GREATER MIDWEST"





# State's 250 Club

A fast growing level of giving for Cyclone athletics - the Department of Intercollegiate Athletics salutes these individuals and firms who contribute a minimum of \$250 per year in support of the ISU athletic scholarship program.

FRANK BURNS JR. Des Moines	GRAY REAL ESTATE CO. Ames	GEORGE A. LaMAIR, JR. Des Moines	RICHTER STOCK FARMS Reinbeck
BURNS, FITZGERALD REALTY Pocahontas	GOODMAN MILLING, INC. State Center	DR. C. D. LEE Ames	WILLIAM J. RICKERT Waterloo
ROBERT CAMBLIN Atlantic	HAAKINSON & BEATY CO. INC. Sioux City	DR. MERLE LOCKWOOD Charles City	G.E. ROBERTS & SON Hubbard
CENTRAL STATES ROOFING CO. Ames	SAMUEL C. HAMILTON Austin, Texas	HOWARD LOEHR Callender	LAWRENCE ROCK Elliot
PAUL R. CHINGREN Pilot Mound	DR. KEITH L. HANSEN Hampton	ROBERT LOOMIS Fort Dodge	DR. MARTIN ROEPKE Oskaloosa
ANDY CHRISTENSEN Ames	HAP'S AIR SERVICE Ames	MIKE LYNCH Boone	DR. LEE E. ROSEBROOK Ames
CHRISTIAN and GRANZOW Roland	DR. JAN HAUGEN Ames	DR. RICHARD F. MARSHALL Des Moines	WILBUR B. ROYER Dallas Center
EARL A. CLABAUGH Humboldt	HERB'S PHILLIPS 66 Ames	GENE M. MASON Cedar Rapids	EVERETT N. SATHER Des Moines
COES'S HOUSE OF FLOWERS Ames	HENKEL CONST. CO. Mason City	McDOWELL'S INS. AGENCY, INC. Ames	SCHROEDER FUNERAL HOME Boone
MARLIN R. CONE Prairie Village, Ks.	HERRALD DRUGSTORE Boone	HAROLD MCKINNEY Des Moines	SECURITY STATE BANK Casey
CONTEMPORARY COMPLIMENTS, INC. Des Moines	HUBBELL BROTHERS TRUST Des Moines	MEADOW LANE MOBILE HOME PARK Ames	SENECA CORP. Des Moines
RUSS COPLEY Ankeny	HUMES DISTRIBUTING, INC. Fort Dodge	PAUL J. MEGINNIS, II Des Moines	CLYDE E. SHUGART Perry Hall, Md.
ED CUNNINGHAM Des Moines	MYRON E. HUNZEKER Peoria, Ill.	WALTER N. MILLER Ames	SILVER SADDLE MOTEL Ames
DR. WAYNE DANKER Dows	IOWA MOLD TOOLING CO. INC. Garner	WAYNE MILLIKEN Ames	JAMES H. SINNING Melbourne
DES MOINES SAVINGS and LOAN Des Moines	IOWA SAVINGS BANK Coon Rapids	MOELLER FARMS, INC. Boone	S-M-B STAGE LINES Des Moines
RON DOBBE Huxley	IOWA STATE SAVINGS BANK Knoxville	JOHN MORTIMER Dallas Center	EARL S. SPENCER Waterloo
DR. THOMAS J. DRY Ames	IOWA SUPPLY CO. Des Moines	MUELLER CONST., INC. Marshalltown	DR. ROBERT SPROWELL Ames
DR. LLOYD C. DUMENIL Ames	HOWARD JESPERSON, JR. Ames	JAMES J. MULVIHILL, JR. Ames	ROBERT W. STAFFORD Ames
J. HOWARD DUNN Oakmont, Penn.	JAMES W. JOHN Des Moines	HOWARD A. NELSON Pilot Mound	STENBERG CONCRETE CONST. Ames
DURLAM & DURLAM, INC. Ames	DR. CHARLES JONS Ames	HOLLIS J. NORDYKE Ames	DR. JACK D. STOAKES Goldfield
EMERSON VET CLINIC Eagle Grove	ROGER JOHNSON Des Moines	NORTHERN CONTRACTING CORP. Clear Lake	STUDENT SUPPLY STORE Ames
ENVELOPE HOUSE Des Moines	KEENAN AND STEVERMER Ames	NUZUM LINCOLN MERCURY Ames	CLYDE STUNTZ Greene
FAMILY PRACTICE CLINIC Ames	KEISTER LUMBER CO. Coon Rapids	OELWEIN STATE BANK Oelwein	TAYLOR INDUSTRIES, INC. Des Moines
ROBERT C. FELLINGER Ames	ART KETELSEN Ames	PASLEY, SINGER, SEISER, PASLEY & HOLM Ames	MARTIN TELLEEN Gowrie
ROBERT E. FISHER Story City	KING-BOLE, INC. Des Moines	PAYER & GIBBONS Ames	THORP FARM SUPPLY Coon Rapids
ROBERT L. FOX Minburn	DONALD B. KLICKING Webster City	POLK CO. FEDERAL SAVINGS & LOAN ASSOC. of DES MOINES Des Moines	BILL & SALLY TRYON Ames
FRANCK-WENGERT PLMBG. & HTNG. Ames	W. A. KLICKMAN Boone	PRO MI CO. INC. Eagle Grove	UNITED HOME BANK & TRUST CO. Mason City
DAVID C. GARFIELD Saddle River N. J.	KOSS CONSTRUCTION CO. Des Moines	GEORGE M. PUTNAM Des Moines	UNITED REAL ESTATE Ames
DR. JAMES H. GARNER, JR. Leawood, Kansas	ART KUHN Ames	JOHN T. QUINN Davenport	CHARLES VOGT Overland Park, Ks.
		ERWIN L. REDMILES & ASSOC. Ames	WATERLOO SAVINGS BANK Waterloo
		DR. KENNETH REIMER Elkader	WAVERLY FARM SUPPLY Waverly
			JERRY WEBBER Carroll
			GENE WEISE Manning
			HERB WILLIAMSON Parkersburg
			MYRON F. WILSON Dallas, Texas



# Multi-Sport Athletes: A Vanishing Breed

**By Rod Williamson**  
**Asst. Sports Information Director**

This is the age of the specialist and few things seem as specialized as athletics. There are offensive and defensive players in football and designated hitters in baseball. And needless to say, very few athletes on the collegiate and professional levels play more than one sport any more.

It wasn't always this way, particularly on the nation's college campuses where a young man might play football in the fall and go out for the baseball or track in the spring.

The most successful multi-sport athlete at Iowa State in the early days was D. C. Jones, a 1917 graduate from Linn Grove, Ia., who won seven varsity letters and one reserve letter while playing football and baseball and running track.

No Cyclone has ever earned more varsity letters than Ken Wells, who earned eight awards and narrowly missed his ninth while competing in football, baseball in track from 1929-1931.

The most honored multi-sport athlete at Iowa State in the early days was D. C. Jones, a 1917 graduate from Linn Grove, Ia., who won seven varsity letters and one reserve letter while playing football and baseball and running track.

No Cyclone has ever earned more varsity letters than Ken Wells, who earned eight awards and narrowly missed his ninth while competing in football, baseball in track from 1929-1931.

The most honored multi-sport athlete at Iowa State was probably Gary Thompson, who earned All-America status in both basketball and baseball as a guard and shortstop.

The best-known of the recent dual-sporters is George Amundson, who holds numerous school records in football and still has the ISU record in the discus throw in track.

While the number of multi-sport athletes is dwindling, there are still some who are versatile enough to make it in several sports. As a result, there is still an annual discussion as to who is the Big Eight's best all-around athlete.

One of the top contenders for the honor might be I-State's Al Dixon, a two-year football letterman who last winter surprised fans with his late-



GARY  
THOMPSON



GEORGE  
AMUNDSON





AL DIXON

season basketball performance as a walk-on addition.

"I was recruited out of high school in football, basketball and baseball," Dixon says, "but I only ever considered football offers. But I did want to play at least one year of baseball and basketball where ever I went. I like to play football in the fall, basketball in the winter and baseball in the spring."

Dixon, a senior from East St. Louis, played for the baseball team briefly but made a big splash with the cagers, averaging 10 points and 10 rebounds with a game high of 14 points and 15 rebounds against powerful Kansas State.

Dixon, who says he intends to meet with the basketball staff about the possibility of his joining the cage team after the completion of football, believes there are a number of athletes who could play more than one sport but that there are several factors to consider.

"There are a lot of guys on the football team who could play another sport," he says, "but going out for a sport takes a lot of time and athletes have got to be concerned about their grades. I want to graduate next spring or summer so my grades have to be all right before I can even consider going out for something else."

In addition to Dixon, footballers Ray Hardee and Stan Hixon played last winter for the Cyclone junior varsity basketball team. Cornerback Jerry Jaksich lettered as a freshman outfielder on the baseball team before electing to emphasize football while catcher Barry Barritt earned a freshman football letter before opting for full-time baseball duty.

Three football players have helped the track team in the past. Offensive lineman Joe Seymour threw the shot and discus last spring while Wayne Stanley and John Valasa have also been out.

There are also a number of former state wrestling champions on the football roster and some outstanding tennis players and golfers.

Who knows? Maybe one of them will become the next Ken Wells, Gary Thompson or George Amundson and earn the coveted title as the best all-around athlete in the Big Eight Conference.





# Campus Chest Gets Geared up for Big Week

Campus Chest, Iowa State University's student-managed big drive for charity is under way and will be hosting a series of events all designed to raise money for worthy causes.

Since its inception in 1953, Campus Chest has raised a total of \$182,900 for worthy charities. It is the student version of the United Way and has always received fine support from the staff, faculty and student body.

Where else can you have a lot of fun and know that your contributions will be used to help those who are really in need? Campus Chest is the answer.

Elsewhere in this program is a complete list of what's going on from today to Oct. 1. There will be something for everyone and, above all, fun for everyone.

## Discover

A pub that's the sensible choice for those whose affairs require a serene atmosphere.



## THAT PLACE

### THE AUSTRALIAN PUB

The establishment that Mad Magazine could call "One of the Eight Great Pubs of the World" --- But they don't.



AFTER THE GAME, COME --- ENJOY THE GRACIOUS ATMOSPHERE - SET IN THE DELIGHTFUL PERIOD OF LATE HALLOWEEN/EARLY W. C. FIELDS.

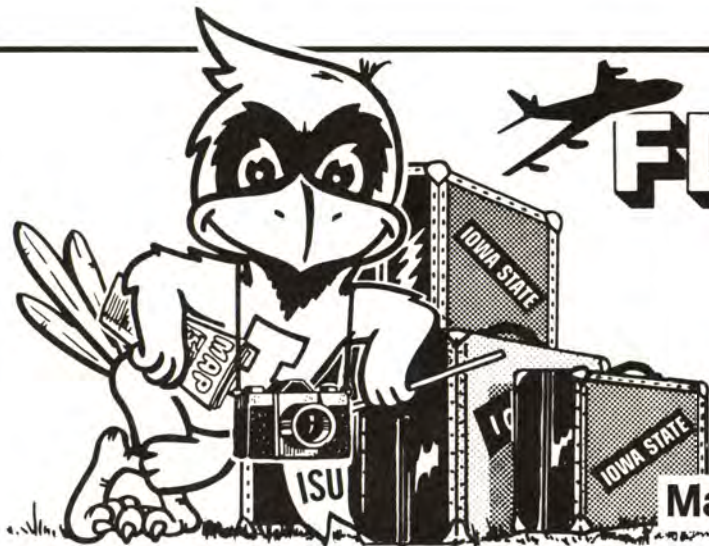
Tell the General Manager (Mr. David Wilson) that you heard the place recommended by Spiro Agnew----- and see where that gets you.

AMES, CONRAD (Yes, Conrad) AND THE WORLD

203 MAIN, AMES ON THE WEST SIDE OF GOLD'S Veritable Quandry

OPEN 4:30 P.M.





# FLY WITH "GY"

TOURS SPONSORED BY THE  
ISU ALUMNI ASSOCIATION

**Make Reservations NOW!**



## BIG EIGHT CARIBBEAN CRUISE

**Jan. 23-30, 1977**

Join alumni from other Big Eight universities for a seven-day cruise on the sparkling Caribbean. Fly direct from Omaha or Kansas City to San Juan, Puerto Rico. Your ship—the M.S. Mermoz, a French luxury liner. Six ports of call—San Juan, Caracas, Grenada, Martinique, Guadeloupe, and St. Croix. Meals included. **COST:** Fares begin at \$765 per person, including round-trip airfare to San Juan.



## IRELAND

**July 4-12, 1977**

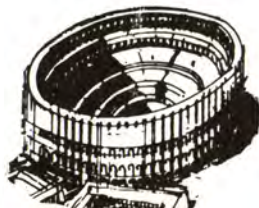
Fly from Chicago to Dublin to enjoy the fabled beauty of Ireland. Three days in Dublin, two days in Killarney, and two days in the port city of Limerick. You'll visit the world-famous Blarney stone, the beautiful Irish countryside, and be treated to a banquet at Bunratty Castle—an authentic Medieval Castle, plus much, much more. Most meals included. **COST:** \$699 per person.



## ROME

**Feb.-March 6, 1977**

ISU's spring quarter-break tour. Rome, the Eternal City, a modern metropolis which offers you a memorable look into a glorious past. A detailed itinerary for this tour is still being worked out. **COST:** approximately \$600, subject to change.



For more information on any or all the trips outlined please contact:  
**Richard Emerson**  
Iowa State University Alumni Association  
125 Memorial Union  
Iowa State University  
Ames, Iowa 50011

**COME ON AND JOIN THE FUN!**





## ISU Minute Men Completing Successful Year

A year ago, with the start of football season for 1975, the Iowa State University Army ROTC unit instituted a Minute Man contingent to appear at athletic and community events. All through the Bicentennial Year of 1976, this group has marched in many Iowa towns and cities to help commemorate the 200th birthday of the United

States. As the year draws to a close so will the activity of the ROTC Colonial Soliders.

Serving in the group, when this early picture was taken, were Bill Hanson, Emmetsburg, kneeling; from left to right, standing, are Pete Murphy, Des Moines; Brian Moore, Omaha, Nebr.; Bill Dinkler, Indianola, and Scott Zima, Boone.

## The ISU IOWA STATE CENTER

Presents

—TONIGHT—

### Lynyrd Skynyrd

Hilton Coliseum \$6 8 p.m.

### Bicentennial Band & Chorus

Stephens Auditorium 8 p.m.

Monday, October 4

(Tickets Available in Advance at No Cost)

### Earth, Wind & Fire

Hilton Coliseum \$8, \$7 7:30 p.m.  
Saturday, October 9 (Parents Day)

**For Ticket Information  
Write Center Ticket Office  
Or Call 294-2436**



## Sororities Pledge 307

A total of 307 women were pledged by the 15 active sorority chapters on the Iowa State University campus this fall. This is 9 more than the number pledged a year ago, according to Barbara Hancock, Greek affairs advisor.

About 548 women participated in formal rush activities, Sept. 1 through Sept. 7. About 1,050 young women will make up the membership of the 15 chapters this year.

## Fraternities Pledge 543

Iowa State University's 31 fraternity chapters pledged a total of 543 men during fraternity rush week from Sept. 3 through Sept. 7 and during the informal rush periods during the summer months.



# Campus Chest '76 .....

Campus Chest Week '76, September 27-October 3 is packed with exciting events to please everyone.

"Do It to Des Moines," the all new marathon event will begin on the steps of Beardshear September 26, and finish at the capital building. All participants will be given a coupon book and three prizes will be awarded on the basis of originality, group participation, and the group that raises the most pledges. Green Pepper, Pizza Hut, and Pizza Pit are each sponsoring a party for the three winners.

Campus Chest is out to set a record this fall by building the world's largest Monopoly Game. The 99 x 99 foot board will break the present 96 foot square record. Twenty two-hour games are scheduled to be played in the I.S.U. Armory October 1-3 with five contestants in each game. Anyone interested in participating can pick up an entry blank in the Campus Chest office, Room 39 in the Memorial Union. A five dollar entry fee is required and prizes will be awarded.

A volleyball tournament will be held on central campus September 28, 29, and 30. Prizes will be given to the top three winners and there is no

entry fee. Campus Chest is also sponsoring canoe races on Lake La Verne.

Chariot races to be held on central campus are similar to the bed races during Veishea. Each group designs their own chariot and a prize will be awarded to the most original creation. The first chariot to cross the finish line will also receive a prize.

A concert and a melodrama are part of Campus Chest Week's entertainment plans. The play, "Pure as the Driven Snow" will be presented by ACTORS, Inc. September 27-30 in Fisher Theater.

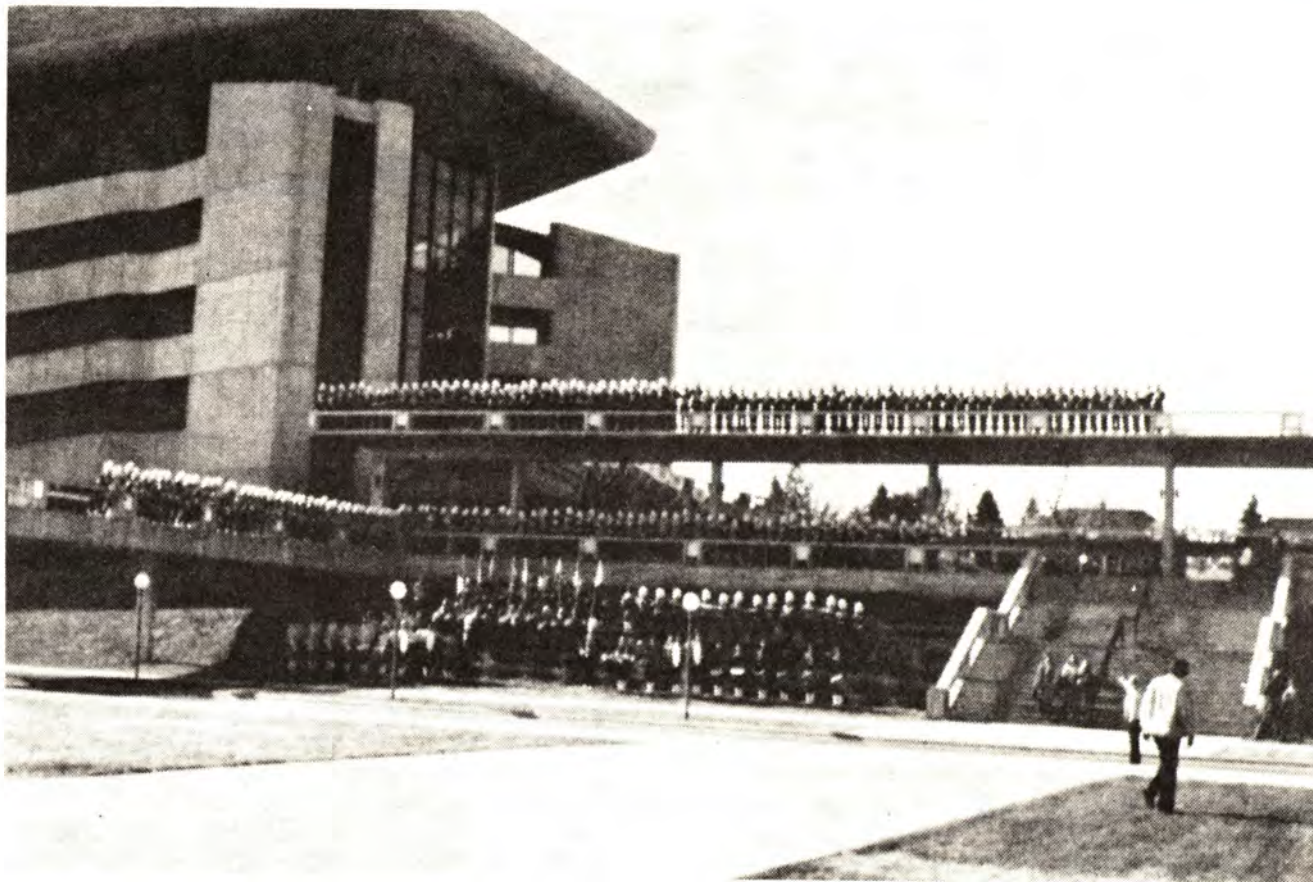
A Jazz 'n Dance Show will be presented by the I.S.U. Dance Company, a division of Orchesis, and a Science and Humanities Jazz Quintet October 3 in the Great Hall of the Memorial Union. Admission is \$1.00 for students and \$1.50 for non-students.

A fifteen foot Grumman canoe will be raffled off at the October 2 football game with Oklahoma. The canoe is compliments of Ron Kinart, manager of Four Seasons Lawn and Sports Center, 4020 W. Lincoln Way. Tickets will be available at the stadium that day.

## ..... a time to share



The  
Iowa State University  
**MARCHING BAND**  
says: *Go Cyclones, Go!!*



The 210 piece Cyclone Marching Band was selected from over 300 applicants. The band represents musicians from 20 states and includes students from virtually every area of academic discipline.

This year in addition to performing at Cyclone football games, the band will perform November 7 at the Pittsburgh Steelers - Kansas City Chiefs game in Kansas City.

Drum Majors - Mike Botts, Marshalltown; Karla Killinger, Des Moines; Wayne Bailey, Newton. Student Directors - Chuck Allen, Adel; Mike Hipp, Batavia. Banner Corps Leader - Jan Kiser, Ames. Woodwind Section Leader - Chuck Martin, La Grange, Illinois. Announcer - Les Bartell, Nevada. Faculty Directors - Jimmie Howard Reynolds, Joseph Christensen.





# The Cyclones



**86 MARK BENDA**  
Animal Science  
Coach - Jon Philby  
Red Oak, Iowa



**35 RICK BLABOLIL**  
Pre-Vet  
Coach - Jack Kersting  
Chesterfield, Mo.



**91 LUTHER BLUE**  
Business Administration  
Coach - Charlie Green  
Valdosta, Ga.



**51 RON BOCKHAUS**  
Forestry  
Coach - Pat Mitchell  
Cedar Falls, Ia.



**56 MARK BOEHM**  
Industrial Administration  
Coach - George Payne  
Council Bluffs, Ia.



**96 TOM BOSKEY**  
Accounting  
Coach - Mike McDonough  
Chicago, Ill.



**25 TOM BUCK**  
Undeclared  
Coach - Terry Ross  
Cuyahoga Falls, Ohio



**69 DAVE CHEESBROUGH**  
Sociology  
Coach - Robert Motte  
Bridgeville, Pa.



**34 MIKE CLEMONS**  
Telecommunicative Arts  
Coach - Keith Foley  
Chicago, Ill.



**23 FRANK COOPER**  
Child Development  
Coach - Emmitt Gamble  
Riviera Beach, Fla.



**32 CAL CUMMINS**  
Undeclared  
Coach - Bob Bierl  
Freeport, Ill.



**68 KEVIN CUNNINGHAM**  
Sociology  
Coach - Bob Foster  
Chicago, Ill.



**21 JEFF CURRY**  
Undeclared  
Coach - Gerry Faust  
Cincinnati, Ohio



**85 AL DIXON**  
Child Development  
Coach - Cornelius Perry  
East St. Louis, Ill.



**73 TERRY EARNEST**  
Physical Education  
Coach - Jack Fisk  
Cedar Rapids, Iowa



**50 DENNY ENGEL**  
Undeclared  
Coach - Gerry Faust  
Cincinnati, Ohio



**24 DEXTER GREEN**  
Business Administration  
Coach - Bob Pruitt  
Woodbridge, Va.



UNION STORY TRUST AND SAVINGS BANK

Main & Burnett - North Grand Plaza - Gilbert  
232-8200 232-8200 232-4843

**GO  
CYCLONES!**

Points on the scoreboard is like  
money in the Bank. . . .  
Score with Union Story Bank!



**A hometown  
friend.**





# The Cyclones



**67 DAVE GREENWOOD**  
Industrial Administration  
Coach - Jerry Mauren  
Cedar Rapids, Ia.



**70 AL GRISSINGER**  
Industrial Education  
Coach - Don Dyke  
Felton, Pa.



**42 GREG GROVE**  
Industrial Administration  
Coach - Lee Crawford  
Tipton, Ia.



**76 DAN HANOVER**  
Psychology  
Coach - Dave Didio  
Syracuse, N.Y.



**29 RAY HARDEE**  
Industrial Administration  
Coach - Jimmy Morgan  
Mulberry, Fla.



**8 BUDDY HARDEAN**  
Physical Education  
Coach - Norman Chadwick  
Auburn, N.Y.



**7 KEVIN HART**  
Distributive Studies  
Coach - Alton Davis  
Kansas City, Mo.



**14 TONY HAWKINS**  
Industrial Management  
Coach - Norman Chadwick  
Onondaga, N.Y.



**58 PAT HENRICKSEN**  
Education  
Coach - Dick Olin  
Clinton, Ia.



**19 STAN HIXON**  
Physical Education  
Coach - Paul Quinn  
Lakeland, Fla.



**17 JERRY JAKSICH**  
Sociology  
Coach - Stan Macaitis  
Omaha, Neb.



**60 RANDY KOCH**  
Speech  
Coach - Curt Olson  
Charter Oak, Ia.



**5 SCOTT KOLLMAN**  
Industrial Administration  
Coach - Pat Mitchell  
Cedar Falls, Ia.



**31 BILL LARKIN**  
Sciences and Humanities  
Coach - Ron Holmes  
Camillus, N.Y.



**84 MICKEY LEAFBLAD**  
Forestry  
Coach - Mike Kunkle  
Gurney, Ill.



UNION STORY TRUST AND SAVINGS BANK  
Main & Burnett - North Grand Plaza - Gilbert  
232-8200 232-8200 232-4843

**GO CYCLONES!**

Points on the scoreboard is like  
money in the Bank. . . .  
Score with Union Story Bank!



**A hometown friend.**



**37 RICH MARK**  
Physical Education  
Collinsville, Ill.





# The Cyclones



**44 GREG MECKSTROTH**  
Industrial Administration  
Coach - Will Rutenschroer  
Cincinnati, Ohio



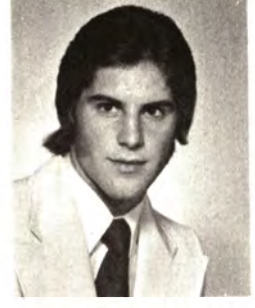
**72 RALPH MECKSTROTH**  
Physical Education  
Coach - Will Rutenschroer  
Cincinnati, Ohio



**39 TOM MILLER**  
Physical Education  
Coach - Jon Davis  
Dearborn, Mich.



**93 LENZY PERINE**  
Physical Education  
Coach - John Menotti  
San Diego, Calif.



**33 TOM PERTICONE**  
Undeclared  
Coach - Bub Chontos



**77 GERRY PETSCH**  
Industrial Administration  
Coach - Robert Atkins  
Detroit, Mich.



**88 GUY PRESTON**  
Pre-Vet  
Coach - Robert Johnson  
Ferguson, Mo.



**64 TOM RANDALL**  
Undeclared  
Coach - Eldean Mathison  
Mason City, Ia.



**82 OTIS RODGERS**  
Physical Education  
Coach - Tom Mahn  
Tampa, Fla.



**89 GLOVER ROGERS**  
Industrial Administration  
Coach - Carl Garrigus  
Opa-Locka, Fla.



**79 TOM ROLOSEN**  
Architecture  
Coach - Richard Hoover  
Vestal, N.Y.



**54 DAVE ROM**  
Farm Operations  
Coach - Harlan Buisman  
Aitken, Minn.



**11 TERRY RUBLEY**  
Business Administration  
Coach - Roger Harrington  
Davenport, Ia.



**57 MARK SETTLE**  
Industrial Administration  
Coach - Cecil Rhoades  
Nevada, Ia.



**65 JOE SEYMOUR**  
Coach - Keith Bunting  
Indianola, Iowa



**28 JOHN SOLOMON**  
Industrial Administration  
Coach - Nick DerCola  
Clyde, N.Y.



**18 WAYNE STANLEY**  
Education  
Coach - Al Werneke  
Belle Glade, Fla.



**90 MAYNARD STENSURD**  
Undeclared  
Coach - Chuck Nichol  
Lake Mills, Ia.



**UNION STORY TRUST AND SAVINGS BANK**

Main & Burnett - North Grand Plaza - Gilbert  
232-8200 232-8200 232-4843

**GO  
CYCLONES!**

Points on the scoreboard is like  
money in the Bank. . . .  
Score with Union Story Bank!



**A hometown  
friend.**





# The Cyclones



**63 MIKE STENSURD**  
Farm Operation  
Coach - Chuck Nichol  
Lake Mills, Ia.



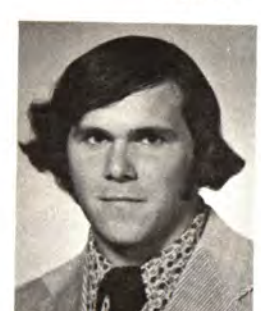
**55 ROB STOFFEL**  
Industrial Administration  
Coach - Bob Varley  
Dubuque, Ia.



**59 TOM STONEROOK**  
Business Administration  
Coach - Grant Blaney  
Chicago, Ill.



**10 MIKE TRYON**  
Pre-Law  
Coach - Phil Johnson  
Ames, Ia.



**27 MIKE TUCCI**  
Business Administration  
Coach - Bill McAlee  
Caledonia, N.Y.



**3 JOHN VALASA**  
Industrial Administration  
Coach - Alexander Zulewski  
Roselle Park, N.J.



**52 CRAIG VOLKENS**  
Industrial Administration  
Coach - Verlyn Rysdam  
Reinbeck, Ia.



**92 RICK WHITE**  
Engineering  
Coach - Jim Hoffmann  
Burlington, Ia.



**16 MARK WILLIAMS**  
Child Development  
Coach - Jim Williams  
Des Moines, Ia.



**74 JEFF YURCHAK**  
Applied Art  
Coach - Ralph Fife  
Carnegie, Pa.



**UNION STORY TRUST AND SAVINGS BANK**

Main & Burnett - North Grand Plaza - Gilbert  
232-8200 232-8200 232-4843

**GO  
CYCLONES!**

Points on the scoreboard is like  
money in the Bank . . .  
Score with Union Story Bank!

MEMBER



**A hometown  
friend.**







## FRESHMEN

# The Cyclones



**TODD BUTTERFIELD**  
Undeclared  
Coach - George Thold  
Stillwater, Minn.



**38 DARRELL CHAPPER**  
Coach - Paul Quinn  
Lakeland, Fla.



**MARK CHICKERELLA**  
Undeclared  
Coach - Ray Belliscari  
Columbus, Ohio



**45 SCOTT COLE**  
Forestry  
Coach - Jerry Pezzetti  
Ankeny, Ia.



**66 DICK CUVELIER**  
Forestry  
Coach - Bill Mulder  
Jackson Junction, Ia.



**TOM GAJEWSKI**  
Business  
Coach - Edward Zembal  
Oak Park, Ill.



**99 CAL JACOBS**  
Psychology  
Coach - Robert Harden  
Council Bluffs, Ia.



**9 AL JOHNSON**  
Agricultural Business  
Coach - Dwaine Twait  
Emmetsburg, Ia.



**BRIAN JOHNSON**  
Pre-Medicine  
Coach - Barry Brandt  
Glidden, Ia.



**13 PAT KENNEDY**  
Business  
Coach - Bob Varley  
Dubuque, Ia.



**DARRYL KOCH**  
Agricultural Business  
Coach - Ed Nelson  
Hudson, Ia.



**94 MIKE LEADERS**  
Agricultural Business  
Coach - Don Hinkle  
Council Bluffs, Ia.



**STEVE LEARY**  
Business  
Coach - Gary Hreem  
Waterloo, Ia.



**GREG LEMPKE**  
Farm Operation  
Coach - Roger Lounsbury  
Livermore, Ia.



**VICTOR MACK**  
Electrical Engineering  
Coach - Thomas Landlittle  
Mansfield, Ohio



**81 JIM NISSEN**  
Engineering  
Coach - Wally Sheets  
Cedar Rapids, Ia.



**DAN QUICK**  
Business  
Coach - Dick Olin  
Clinton, Ia.



**GREG RENSINK**  
Agricultural Business  
Coach - Marv Ryan  
Newkirk, Ia.



UNION STORY TRUST AND SAVINGS BANK

Main & Burnett - North Grand Plaza - Gilbert  
232-8200 232-8200 232-4843

**GO  
CYCLONES!**

Points on the scoreboard is like  
money in the Bank. . . .  
Score with Union Story Bank!



**A hometown  
friend.**





# The Cyclones

## FRESHMEN



**53** **GENE ROWELL**  
Physical Education  
Coach - Bernard Olson  
Stitzer, Wis.



**TOM SCHIEBOUT**  
Electrical Engineering  
Coach - Jim Johnson  
Sioux Center, Ia.



**26** **MIKE SCHWARTZ**  
Mechanical Engineering  
Coach - Jim Williams  
Des Moines, Ia.



**BOB SCOTT**  
Industrial Education  
Coach - Steve Oleson  
Lombard, Ill.



**15** **RICK SINNOTT**  
Physical Education  
Coach - Dennis Fredricks  
Albia, Ia.



**TONY SOBERS**  
Radio, TV  
Coach - Jim Palla  
Brooklyn, N. Y.



**YOGI STEPHENS**  
Business  
Coach - Mike Mancini  
Riverview, Fla.



**75** **TIM STONEROOK**  
Undeclared  
Coach - Grant R. Blaney  
Buffalo Grove, Ill.



**JIM WOODWARD**  
Undeclared  
Coach - Loyd Dunne  
Collinsville, Ill.



**UNION STORY TRUST AND SAVINGS BANK**

Main & Burnett - North Grand Plaza - Gilbert  
232-8200 232-8200 232-4843

**GO  
CYCLONES!**

Points on the scoreboard is like  
money in the Bank. . . .  
Score with Union Story Bank!

MEMBER



**A hometown  
friend.**





# ISU TRAINERS



Back Row (l to r) Head Trainer Frank Randall, Rod Vanderheiden, Bill Watkins, Marty Richards, George Welu and Keith Lancaster.

Front: Lindsey Vanderheiden, Larry Thom, Bill Irland, Tim Hout and John VanFleet.

## Gold's VERITABLE QUANDRY

The Restaurant  
with the Buggy  
in the Window

**OPEN  
SUNDAYS**



We are now offering a  
splendid variety of ordinary  
and extraordinary lunches  
and dinners.

from Carl Hamilton's "In No Time at All"

One block west of Munn Lumber  
at 203 Main Street, Ames, Iowa.



# IOWA STATE FOOTBALL ROSTER

No.	Name and Position	Hgt.	Wgt.	Age	Yr.	Hometown (High School)
2	CRAIG MANSKE, k	6-2	200	19	So.	Greendale, Wisc.
3	*JOHN VALASA, cb	6-2	190	21	Jr.	Roselle Park, N.J.
5	*SCOTT KOLLMAN, k	6-0	179	21	Jr.	Cedar Falls, Ia.
7	KEVIN HART, cb	5-11	186	20	Jr.	Kansas City, Mo.
8	*BUDDY HARDEMAN, qb	6-0	188	21	Jr.	Auburn, N.Y.
9	AL JOHNSON, fb	6-0	210	18	Fr.	Emmetsburg, Ia.
10	*MIKE TRYON, qb	6-1	188	21	Jr.	Ames, Ia.
11	TERRY RUBLEY, qb	6-2	170	20	So.	Davenport, Ia.
13	PAT KENNEDY, qb	6-1	190	18	Fr.	Dubuque, Ia.
14	*TONY HAWKINS, s	6-0	186	21	Sr.	Onondaga, N.Y.
15	RICK SINNOTT, qb	5-11	175	18	Fr.	Albia, Ia.
16	*MARK WILLIAMS, r	6-3	186	22	Sr.	Des Moines, Ia.
17	*JERRY JAKSICH, cb	6-1	191	21	Sr.	Omaha, Neb.
18	*WAYNE STANLEY, qb	6-0	178	22	Sr.	Belle Glade, Fla.
19	STAN HIXON, se	6-0	168	19	So.	Lakeland, Fla.
21	JEFF CURRY, tb	5-8	185	19	So.	Cincinnati, Ohio
23	FRANK COOPER, fb	5-11	199	22	Jr.	Riviera Beach, Fla.
24	*DEXTER GREEN, tb	5-9	171	19	So.	Woodbridge, Va.
25	TOM BUCK, se	5-10	182	19	So.	Cuyahoga Falls, Ohio
26	MIKE SCHWARTZ, s	6-0	175	18	Fr.	Des Moines, Ia.
27	MIKE TUCCI, fb	5-11	210	19	So.	Caledonia, N.Y.
28	*JOHN SOLOMON, sb	5-8	179	21	Jr.	Clyde, N.Y.
29	*RAY HARDEE, sb	6-0	182	19	So.	Mulberry, Fla.
31	*BILL LARKIN, s	6-1	182	21	Jr.	Camillus, N.Y.
32	CAL CUMMINS, tb	5-11	195	20	Jr.	Freeport, Ill.
33	TOM PERTICONE, cb	5-11	186	19	So.	Clairton, Pa.
34	MIKE CLEMONS, cb	6-1	190	19	So.	Chicago, Ill.
35	*RICK BLABOLIL, p	6-0	183	20	Jr.	Chesterfield, Mo.
37	RICH MARK, cb	6-0	182	21	Jr.	Collinsville, Ill.
38	DARRELL CHAPPER, sb	5-9	175	18	Fr.	Lakeland, Fla.
39	TOM MILLER, r	5-10	186	21	Jr.	Dearborn, Mich.
42	*GREG GROVE, tb	5-11	201	22	Sr.	Tipton, Ia.
44	GREG MECKSTROTH, dt	6-3	202	19	So.	Cincinnati, Ohio
45	SCOTT COLE, lb	6-2	200	18	Fr.	Ankeny, Ia.
50	DENNY ENGEL, c	6-0	202	20	So.	Cincinnati, Ohio
51	RON BOCKHAUS, c	6-2	212	19	So.	Cedar Falls, Ia.
52	*CRAIG VOLKENS, de	6-2	210	22	Jr.	Reinbeck, Ia.
53	GENE ROWELL, dt	6-2	240	18	Fr.	Stitzer, Wis.
54	DAVE ROM, c	6-2	224	21	Jr.	Aitken, Minn.
55	*ROB STOFFEL, og	6-1	230	22	Sr.	Dubuque, Ia.
56	MARK BOEHM, og	6-1	227	20	So.	Council Bluffs, Ia.
57	*MARK SETTLE, lb	6-3	227	19	Jr.	Nevada, Ia.
58	PAT HENRICKSEN, og	6-4	215	19	So.	Clinton, Ia.
59	TOM STONEROOK, c	6-2	240	19	So.	Buffalo Grove, Ill.
60	*RANDY KOCH, mg	6-3	238	19	So.	Charter Oak, Ia.
63	*MIKE STENSRUD, mg	6-4	270	20	So.	Lake Mills, Ia.
64	*TOM RANDALL, dt	6-6	245	20	Jr.	Mason City, Ia.
65	JOE SEYMOUR, ot	6-3	251	21	Jr.	Indianola, Ia.
66	DICK CUVELIER, dt	6-4	270	18	Fr.	Jackson Junction, Ia.
67	*DAVE GREENWOOD, og	6-4	240	22	Sr.	Cedar Rapids, Ia.
68	*KEVIN CUNNINGHAM, ot	6-5	228	20	Jr.	Chicago, Ill.
69	DAVE CHEESEBROUGH, dt	6-2	247	19	Jr.	Bridgeville, Pa.
70	AL GRISSINGER, ot	6-3	229	20	So.	Felton, Pa.
72	RALPH MECKSTROTH, ot	6-3	231	20	So.	Cincinnati, Ohio
73	TERRY EARNEST, og	6-5	232	21	Jr.	Cedar Rapids, Ia.
74	JEFF YURCHAK, dt	6-2	236	19	Jr.	Carnegie, Pa.
75	TIM STONEROOK, ot	6-5	225	18	Fr.	Buffalo Grove, Ill.
77	*GERRY PETSCH, c	6-3	225	21	Jr.	Detroit, Mich.
78	DAN HANOVER, mg	6-1	205	21	Jr.	Syracuse, N.Y.
79	TOM ROLOSON, og	6-3	242	19	So.	Vestal, N.Y.
81	JIM NISSEN, de	6-3	205	18	Fr.	Cedar Rapids, Ia.
82	*OTIS RODGERS, de	6-3	227	22	Sr.	Tampa, Fla.
84	MICKEY LEAFBLAD, te	6-4	215	18	So.	Gurnee, Ill.
85	*AL DIXON, te	6-5	216	22	Sr.	East St. Louis, Ill.
86	*MARK BENDA, lb	5-9	210	21	Sr.	Red Oak, Ia.
88	*GUY PRESTON, te	6-2	207	20	Jr.	Ferguson, Mo.
89	*GLOVER ROGERS, te	6-3	210	22	Sr.	Opa-Locka, Fla.
90	*MAYNARD STENSRUD, lb	6-4	237	21	Sr.	Lake Mills, Ia.
91	*LUTHER BLUE, se	6-0	181	21	Sr.	Valdosta, Ga.
92	RICK WHITE, de	6-1	210	19	So.	Burlington, Ia.
93	*LENZY PERINE, de	6-2	209	22	Sr.	San Diego, Calif.
94	MIKE LEADERS, lb	6-1	205	18	Fr.	Council Bluffs, Ia.
96	*TOM BOSKEY, lb	6-2	210	19	So.	Chicago, Ill.
99	CAL JACOBS, lb	6-2	205	18	Fr.	Council Bluffs, Ia.

\* indicates letters won

Ages as of Sept. 1, 1976





## You'll like the price and mileage. You'll also like the car.

Prices start at \$2899\*  
2-Seat Scooter \$2899\*  
The Coupe (shown) \$3098\*

\*Manufacturer's Suggested Retail Price including dealer preparation. Tax, license, destination charge and available equipment additional.



**40 MPG HIGHWAY**



**28 MPG CITY**

EPA mileage with standard 1.4-litre engine, 4-speed manual transmission and standard 3.70:1 rear axle. (Remember—these mileage figures are estimates. The actual mileage you get will vary depending on the type of driving you do, your driving habits, your car's condition and available equipment. In California, see your Chevy dealer for EPA mileage figures on California emission-equipped cars.)



**"Smart Switch."**

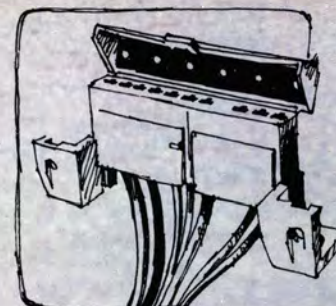
Puts headlight dimmer, turn signal, windshield washers, windshield wipers and lane-change signal all at your fingertip.

### Short turning circle.

At 30.2 feet, Chevette has one of the shortest turning circles of any car sold in the world. You'll appreciate it every time you park, back up or maneuver.

### Rack-and-pinion steering.

European-style. Compact and lightweight.



### Diagnostic connector.

Lets you diagnose primary ignition circuit and other parts of the electrical system.



### Freedom battery.

Freedom from worry about adding water or checking water levels. Sealed side terminals resist corrosion buildup.

**Chevrolet**

6,030 dealers

That's nearly twice as many as VW, Toyota and Datsun combined. Parts and service are always nearby.

# Chevette

CHEVROLET'S NEW KIND OF AMERICAN CAR.



### Room for four.

With space for luggage behind the back seat. Seat folds down for expanded load space, accessible through rear hatch.



# OFFENSE

89 GLOVER ROGERS	TE
70 AL GRISSINGER	LT
67 DAVE GREENWOOD	LG
50 DENNY ENGEL	C
55 ROB STOFFEL	RG
68 KEVIN CUNNINGHAM	RT
91 LUTHER BLUE	SE
18 WAYNE STANLEY	QB
24 DEXTER GREEN	TB
32 CAL CUMMINS	FB
29 RAY HARDEE	SB

# IOWA STATE

## DEFENSE

82 OTIS RODGERS	LE
63 MIKE STENSURD	LT
90 MAYNARD STENSURD	MG
64 TOM RANDALL	RT
93 LENZY PERINE	RE
96 TOM BOSKEY	LB
86 MARK BENDA	LB
16 MARK WILLIAMS	R
17 JERRY JAKSCH	CB
34 MIKE CLEMONS	CB
14 TONY HAWKINS	S

## IOWA STATE SQUAD

2 Manko, k	53 Rowell, dt
3 Velase, cb	54 Rom, c
5 Kollman, k	55 Stoffel, og
7 Hart, cb	56 Boehm, og
8 Hardeman, qb	57 Settler, lb
9 Johnson, fb	58 Hennricksen, og
10 Tryon, sb	59 Tom Stonerock, s
11 Rubley, qb	60 Koch, mg
14 Hawkins, s	63 Mike Stensrud, mg
13 Kennedy, qb	64 Randall, dt
15 Sinnott, qb	65 Seymour, ot
16 Mark Williams, r	66 Cuvelier, dt
17 Jaksch, cb	67 Greenwood, og
18 Stanley, qb	68 Cunningham, ot
19 Nixon, se	69 Chesebrough, dt
21 Curry, lb	70 Grissinger, ot
23 Cooper, fb	72 Ralph Meckstroth, ot
24 Green, fb	73 Earnest, og
25 Buck, se	74 Vorchak, dt
26 Schwartz, s	75 Tim Stonerock, ot
27 Turci, fb	77 Petsch, c
28 Solomon, sb	78 Hanover, mg
29 Hardee, sb	79 Roloson, og
31 Larkin, s	80 Earnest, ot
32 Cummins, fb	81 Nissen, de
33 Perincio, cb	82 Rodgers, dt
34 Clemmons, dt	84 Leafblad, te
35 Blabolil, p	85 Dixon, te
36 Isler, fb	86 Benda, lb
37 Mark, cb	88 Preston, te
38 Chappier, og	89 Rogers, te
39 Miller, r	90 Maynard Stensrud, fb
40 Graham, s	91 Blue, se
42 Grove, lb	92 White, de
44 Greg Meckstroth, dt	93 Perine, de
45 Cole, lb	94 Leaders, lb
50 Engel, c	96 Boskey, lb
51 Bockhaus, c	99 Jacobs, lb
52 Volkens, de	

**Coke** adds life...to everything that makes your livin' nice! Whether you're out with the gang having fun...or enjoying a quiet moment alone...no matter what makes for the good times...Coke adds life.



# OFFENSE

83 ART DANIELS	TE
71 TERRY PIRMAN	LT
65 JIM KREZMIEN	LG
50 RANDY CORNETTE	C
59 TOM WENDLING	RG
72 DAVE STEUER	RT
19 KIM FEATSENT	SE
7 MARK ROHALEY	QB
23 ART BEST	HB
35 ANDY FERREE	FB
27 KEITH CREDIT	FL

# KENT STATE

## DEFENSE

41 DARRYL MARTIN	LE
74 GLENN DEADMOND	LT
81 MIKE ZELE	RT
55 RICK CHRISTIE	RE
89 MIKE MCKIBBEN	LB
40 JACK LAZOR	LB
45 LARRY CARVER	LB
22 GAREY BURT	CB
16 HARRY LIGGINS	CB
15 MIKE STALLWORTH	WS
17 DARRYL HOYETT	SS

## KENT STATE SQUAD

1 Anderson, wr	53 Kurt Pakan, oc
3 Huth, p	54 Cochran, de
4 Curley, se	55 Christie, de
7 Rohaley, qb	58 Blazina, oc
8 Bill Pakan, cb	59 Wendling, og
9 Kriender, fl	62 Hall, ot
10 Thompson, cb	63 Yazack, og
12 Whalen, qb	64 Wallace, dt
13 Brown, pk	65 Krezmien, og
14 Angelo, qb	66 Batton, lb
15 Stallworth, ws	68 Markin, de
16 Liggins, cb	69 Ryzcek, og
17 Hoyett, ss	71 Pirman, ot
19 Featsent, se	72 Steuer, dt
21 McQueen, lb	73 Horvath, ot
22 Burt, cb	74 Deadmond, dt
23 Best, hb	75 Jasko, ot
24 Lukens, sb	76 Army, ot
25 Jamieson, fb	77 Zawilski, dt
26 Marchese, pk	80 Woodrum, te
33 Leeper, hb	81 Zele, dt
35 Ferree, se	82 Credit, fl
38 Dushak, lb	83 Daniels, te
40 Lazor, lb	85 Cook, dt
41 Martin, de	87 Middleton, de
44 Moore, lb	88 Bouchard, te
45 Cavar, lb	90 Cornette, og
50 Cornette, oc	99 McKibben, fb
51 Shaw, de	



Now from Magnavox.

# Touch-Tune™

## Color Television.

The most advanced electronics. At your fingertip.



STAR  
SYSTEM.



**Touch-tune to any channel (2 to 83, VHF or UHF)** directly, without going through all the channels you do not want.  
**Touch-tune silently, effortlessly in 3/10 of a second...** with the accuracy of a digital computer, with the ease of a pushbutton telephone.

**Touch-tune at the set or from up to 40 feet away.**

**See the channel number flash on the screen,** then magically disappear.  
**See a most remarkable color picture** because you tune with computer precision.

Now the Magnavox Star System™ lets you enjoy television like you've never enjoyed it before. And all with the touch of one finger.

Model 4867.  
Crafted of wood and  
non-wood materials.  
Simulated TV picture.

# MAGNAVOX

QUALITY IN EVERY DETAIL



# KENT STATE FOOTBALL ROSTER

No.	Name and Position	Hgt.	Wgt.	Age	Hometown
1	TIM ANDERSON, wr	5-10	190	So.	Whitehall, Ohio
3	MIKE HUTH, p	5-6	145	So.	Kent, Ohio
4	JACK CURLEY, se	5-11	171	So.	Pittsburgh, Pa.
7	MARK ROHALEY, qb	6-0	164	So.	Salem, Ohio
8	BILL PAKAN, cb	5-11	185	Jr.	Tallmadge, Ohio
9	JEFF KRIEDER, fl	6-2	185	Fr.	Oak Glen, W.V.
10	WOODY THOMPSON, cb	5-10	180	So.	Cleveland, Ohio
12	MIKE WHALEN, qb	6-0	176	Jr.	Detroit, Mich.
13	DON BROWN, pk	6-0	193	Jr.	Akron, Ohio
14	FRANK ANGELO, qb	5-11	185	So.	Hubbard, Ohio
15	MIKE STALLWORTH, ws	5-11	181	Sr.	Cleveland Hts., Ohio
16	HARRY LIGGINS, cb	5-11	165	So.	Fremont, Ohio
17	DARRYL HOYETT, ss	6-1	197	Jr.	Cleveland, Ohio
19	KIM FEATSENT, se	6-1	187	Jr.	Ashtabula, Ohio
21	MIKE McQUEEN, hb	5-10	160	Fr.	Cleveland, Ohio
22	GAREY BURT, cb	5-11	189	So.	Buffalo, N. Y.
23	ART BEST, hb	6-1	205	Sr.	Gahanna, Ohio
24	MARK LUKENS, ss	6-0	172	Sr.	N. Canton, Ohio
25	DICK JAMIESON, fb	5-10	202	So.	Cleveland Hts., Ohio
26	PAUL MARCHESE, pk	5-8	172	Jr.	Bellaire, Ohio
33	MANNY LEEPER, hb	5-11	179	So.	Jamestown, N. Y.
35	ANDY FERREE, fb	5-10	195	So.	Columbus, Ohio
38	BILL DUDASH, lb	6-4	215	Fr.	Cleveland, Ohio
40	JACK LAZOR, lb	6-2	210	So.	Warren, Ohio
41	DARRYL MARTIN, de	6-0	217	Sr.	Columbus, Ohio
44	SAM MOORE, lb	6-1	209	So.	Huntington, W. V.
45	LARRY CAVER, lb	5-11	200	Jr.	Cleveland, Ohio
50	RANDY CORNETTE, oc	6-0	221	Sr.	Shelby, Ohio
51	JOE SHAW, de	6-1	237	Sr.	Baltimore, Md.
53	KURT PAKAN, oc	6-0	215	Fr.	Tallmadge, Ohio
54	CHARLES COCHRAN, de	6-0	212	So.	Canton, Ohio
55	RICK CHRISTIE, de	6-5	241	Sr.	Cambridge Springs, Pa.
58	BRIAN BLAZINA, oc	6-2	206	Jr.	Lorain, Ohio
59	TOM WENDLING, og	6-2	234	Jr.	Dayton, Ohio
62	MARVIN HALL, ot	6-1	225	Fr.	Cleveland, Ohio
63	DAVE YAZBEK, og	6-2	220	Fr.	Youngstown, Ohio
64	BOB WALLACE, dt	6-0	245	Fr.	Fredonia, N. Y.
65	JIM KREZMIEN, og	6-2	225	Sr.	Springville, N. Y.
63	BEN BATTON, lb	6-1	185	Fr.	Macedonia, Ohio
67	DEAN TOTEDO, og	6-1	210	Fr.	Willoughby, Ohio
68	BILL MARKIN, de	6-3	200	Sr.	Ironton, Ohio
69	LARRY RYCZEK, og	6-3	226	Jr.	Streetsboro, Ohio
71	TERRY PIRMAN, ot	6-4	233	Sr.	Warren, Ohio
72	DAVE STEUER, ot	6-2	240	Sr.	Streetsboro, Ohio
73	BRETT HORVATH, ot	6-2	230	Fr.	Ashtabula, Ohio
74	GLENN DEADMOND, dt	6-1	254	Sr.	Detroit, Mich.
75	TOM JESKO, ot	6-5	247	Jr.	Salem, Ohio
76	ALLAN AMY, ot	6-3	230	Fr.	Andover, Ohio
77	MIKE ZAWALSKI, dt	6-3	225	Fr.	Maple Hts., Ohio
80	MIKE WOODRUM, te	6-3	215	Fr.	Portsmouth, Ohio
81	MIKE ZELE, dt	6-3	232	Jr.	Euclid, Ohio
82	KEITH CREDIT, fl	6-3	175	Jr.	Lanham, Md.
83	ART DANIELS, te	6-2	210	Sr.	Wakeman, Ohio
85	SCOTT COOK, dt	6-1	240	So.	Mansfield, Ohio
87	DARRELL MIDDLETON, de	6-2	230	Fr.	Marion, Ohio
88	DENNIS BOUTWELL, te	6-5	217	So.	Ada, Ohio
89	MIKE McKIBBEN, lb	6-2	218	Jr.	Weston, Ohio
99	NEIL FERREE, ws	6-2	192	So.	Columbus, Ohio



College

# SCOREBOARD

following

## I.S.U. FOOTBALL

Saturdays at 4 p.m.

Sponsored by



ISU Credit Union  
HiWay Credit Union  
Ames City Credit Union

on

# KASI

1430



AMERICA'S STEAK EXPERT

- ★ *UNIFORMLY PERFECT U.S.D.A. CHOICE STEAKS*
- ★ *DINING ROOM*
- ★ *FREE PARKING*

HIGHWAY 30 WEST

OPEN 11 a.m.-9 p.m.

PHONE: 292-4033

## Four Seasons

### LAWN & SPORTS CENTER

4020 W. Lincolnway • Ames

Phone: 292-3032



**Cyclone Fans**

**SAVE \$300!**

Coupon good for \$300 off regular price of any new 1976 John Deere Snowmobile (except Model 300).

Offer expires November 30, 1976

**AFTER THE GAME  
STOP BY!  
WE'RE RIGHT ON YOUR  
WAY HOME!**



THE FAMILY RESTAURANT

1606 South Duff  
Junction New Hwy. 30 & 69



# CYCLONE FANS.....

Now **THREE** different locations,  
But **ONE** Great Charcoal Taste!

## Hardee's® Charbroil Burgers



218 WELCH

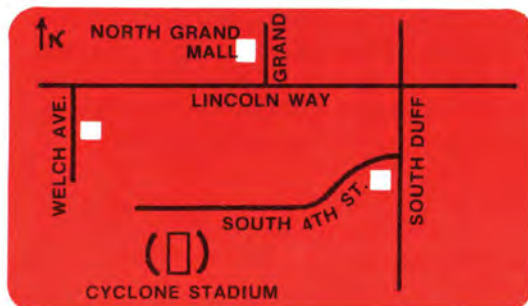


NORTH GRAND MALL

AND OUR **NEWEST** LOCATION.....

309 SOUTH DUFF

MAP OF OUR 3 AMES LOCATIONS



**Hardee's®** / MORE THAN  
Charbroil Burgers JUST ANOTHER  
HAMBURGER  
PLACE



# About Kent State University

Developing human resources and managing social change have been the goals of Kent State University since its founding in 1910. In a little more than six decades, the University has grown into a comprehensive, fully accredited institution serving more than 20,000 students at the Kent campus and approximately 7,500 at the University's seven regional campuses.

With its nucleus in Kent, a city of 30,000, the University's regionalized system is uniquely designed to provide educational opportunities throughout the heavily-industrialized and populated northeast Ohio area.

Academic programs are encompassed within four undergraduate college—Arts and Sciences, Business Administration, Education, and Fine and Professional Arts — and three schools, Library Science, Nursing and Health, Physical Education and Recreation.

Graduate study is offered in 29 areas on the master's level and 15 areas on the doctoral level.

The University, named for W. S. Kent, a local businessman, currently owns approximately 2,200 acres of land plus buildings and equipment valued at more than \$150 million. The Kent campus is located on a tract of 800 acres with an airport and golf course nearby. Buildings on the campus number 79, including a new Student Center, which serves as the new focal point for the campus. Of the 79 buildings, 37 are residence halls and are self-amortizing.

In addition to the regular academic programs which are offered at the eight campuses, seven regional campuses offer special two-year associate degree programs in 13 areas.

The seven regional campuses are located at Ashtabula, East Liverpool, Salem, and Burton (Geauga), North Canton (Stark), Warren (Trumbull) and New Philadelphia (Tuscarawas).

The University's dedication to academic excellence continues to grow, despite economic pressures. Almost 60 per cent of the faculty hold doctorate degrees and the 12-story open-stack library contains well over a million volumes.

Students at Kent are a widely diverse group including more than 300 from 60 foreign nations. The University's outstanding program for handicapped students is recognized as one of the best in the nation. It combines counseling and developmental services with physical system designed for the handicapped. Kent's programs for minority students, including the institute for African American Affairs, are a magnet for students from across the state.

At the Kent campus the University provides individualized academic challenges for potentially

superior students through its Honors and Experimental College. A Distinguished Scholar Award, unique in Ohio, has attracted students of truly outstanding abilities.

Special programs at each of the campuses offer academic or public service outlets for superior students. These include a volunteer program which annually has attracted more than 2,000 students to its service programs to hospitals, welfare agencies and to individuals in need.



The focus of Kent State University's campus is its modern 13-story library, which opened in 1971, and contains over one million volumes.

Special projects such as the Liquid Crystal Institute — which has provided the basis for research in areas such as cancer, electronic digital display and in medical research — offers students research opportunities. Community problems such as pollution, peaceful change, school desegregation have been study areas for student and faculty interest.

Academic excellence is measured in another way through the grants which Kent State faculty and programs receive. In 1973-74 academic year, the University received approximately \$3 million in grants.

Similarly, its students and faculty regularly receive fellowships and grants for study in such programs as the Fulbright Scholar award and the Woodrow Wilson Fellowships.

Artistic programs flow from the nationally-recognized schools of Music and Art on the Kent Campus and from a cultural facility at Blossom Music Center, where the University is affiliated with the Cleveland Orchestra in a summer music project and where it provides summer theatre, music and visual arts opportunities.

The division of Continuing Education serves as a focal point for cooperative endeavors with academic units and agencies both within the University and outside. It annually brings almost 20,000 persons to campus for workshops, clinics, seminars, short courses, conferences and cultural programs.

All of these areas serve to provide focus for the University's primary purposes: research, public service and education.





# KENT STATE

## Coaching Staff



**DENNIS FITZGERALD**  
Head Coach



**JOE HAERING**  
Asst. Coach



**NICK NICOLAU**  
Asst. Coach



**NICK SABAN**  
Asst. Coach



**RON LYNN**  
Asst. Coach



**GREG LONG**  
Asst. Coach



**CLIFTON STEWART**  
Asst. Coach



# Golden Flashes



**1** TIM ANDERSON



**23** ART BEST



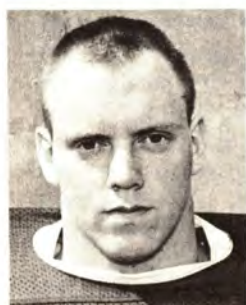
**58** BRIAN BLAZINA



**13** DON BROWN



**22** GAREY BURT



**55** RICK CHRISTIE



**85** SCOTT COOK



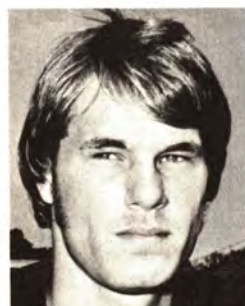
**50** RANDY CORNETTE



**83** ART DANIELS



**74** GLENN DEADMOND



**19** KIM FEATSENT



**35** ANDREW FERREE



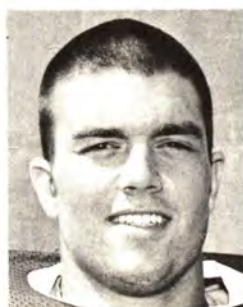
**17** DARRYL HOYETT



**3** MIKE HUTH



**25** DICK JAMIESON



**75** TOM JESKO





# Golden Flashes



65 JIM KREZMIEN



40 JACK LAZOR



33 MANNY LEEPER



16 HARRY LIGGINS



24 MARK LUKENS



89 MIKE McKIBBEN



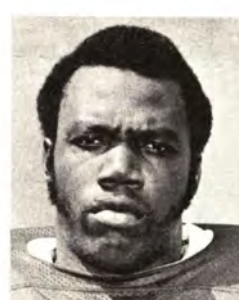
44 SAM MOORE



7 MARK ROHALEY



69 LARRY RYZCEK



51 JOE SHAW



15 MIKE STALLWORTH



72 DAVE STEUER



59 TOM WENDLING



12 MIKE WHALEN



81 MIKE ZELE





We give your  
mouth more reasons  
to cheer.



These candies are on sale in the stadium now.



# ISU 100 Cyclone Century Club

The Iowa State University Department of Intercollegiate Athletics salutes the members of the CYCLONE CENTURY CLUB... a growing group of significant contributors to Iowa State athletics. These individuals and firms have contributed \$100 annually to help us reach our goal of athletic excellence for Iowa State University. CARDINAL AND GOLD and STATE'S 250 CLUB members are recognized in another section of the program.

**ADAIR**

Adair Feed and Grain Co.  
Charles Crawford

**ADEL**

Robert D. McKee  
Lee H. Straight

**ALDEN**

Dr. R.J. Buzzetti  
Warren R. Porter

**ALGONA**

Algona Reminder, Inc.  
Alfred Schenck  
Security State Bank  
W. J. Nugent  
Dr. D. J. Shey  
Lowell W. Smith

**ALTA**

Robert Hinkeldey

**AMES**

James A. Abbott  
Air Conditioning, Inc.  
Lloyd C. Allen  
Allen Construction Co.  
Robert D. Allen  
G. Roger Alley  
Howard E. Ames  
John H. Ames  
Ames Building and Loan Assn.  
C. A. Hanlin  
Ames Lodge BPOE 1626  
Ames Nursery  
Lloyd Cafferty  
Ames Processed Foods, Inc.  
Ames Travelodge  
Robert Piper  
Ames Tune-Up Service  
Clarence Small  
Clifford Anderson  
James Anderson  
Marvin Anderson  
Richard D. Axtell  
Dr. John Bacon  
Dale and Nancy Bahr  
Barbara Jean's School of Dance  
Barbara Jean VanScoy  
Jerry L. Barber  
Harlos L. Barnum  
James Barr  
John W. Baty  
Charles L. Benson  
Benson Motors  
Carl and Curt Benson  
Dr. Michael F. Berard  
Robert T. Binkley  
Dr. Charles Birdsall  
Duane A. Bird  
Donald T. Bledsoe  
Bleeker's Inc.  
Bliss Construction Co.  
Richard K. Bliss  
King Block's Korral  
Bourns, Inc.  
Richard L. Bowman  
Dr. David R. Boylan  
John R. Braden, Jr.  
Thomas L. Brayton  
James Brewer  
The Broiler  
John Pfeffer  
Delmar M. Brue  
Jack Bruin  
N. W. Brunia  
Robert Buck  
Dr. William M. Buck  
C. H. Budolfson  
Craig C. Bumgarner

**Fred Bunce**

Verle Burgason  
LeRoy E. Butler  
C & K Heating & Air Conditioning  
C and M Excavating  
Mike Goff and Chuck Wheeler  
Campustown Skelly  
Carpenter Paper Co. of Iowa  
Dean Spurgeon  
Carr Hardware  
Art Ketelson — Jim Daffin  
Stephan B. Carr  
Carriage House  
Bud Nichol and Marv Walter  
Dr. George C. Christensen  
City Electric Supply, Inc.  
R. E. Sullivan  
H. L. Bogengrief  
Gerhard P. Clausius  
Ev Cochrane  
Compass Insurance Agency, Ltd.  
Arnie Gaarde  
Ray Cook Const. Co., Inc.  
Cooper's Mill, Inc.  
Pete Cooper  
Credit Bureau of Story County  
Richard Wiebe  
Bud Corieri  
Arthur E. Cott  
Harold A. Cowles, Jr.  
Robert L. Crom  
Cross Floor Service  
Verl Crouse  
Kenneth Culp  
Steven D. Curran  
John Curry  
Cyclone Country Ambassadors  
Robert Mickle  
Donna R. Danielson  
Harold W. Davey  
D. C. Construction Co.  
Paul DeJong  
Dr. Ervin Denisen  
Diesel Service Company  
Tom Divine  
Bruce Doane  
Mrs. Evelyn Donels  
Doboy Feeds — Domain Ind., Inc.  
Dougherty & Co.  
W. E. Dreeszen  
Lloyd J. Dresser  
Jack G. Dunlap  
Norman P. Dunlap  
Zac Dunlap  
George R. Duval  
Dyna-Kleen Service  
Ken C. Davis  
Roscoe W. Eggers  
Chuck Elder  
Ray S. Epperly  
LeRoy E. Everson  
Arthur H. Eschbach  
James L. Ethington  
L.C. Faust  
Dr. Earl Feldman  
Robert A. Folkmann  
John H. Ford, Jr.  
C. F. Foreman  
Charles F. Frederiksen  
R. Friedrich and Sons  
Robert and Reinhard Friedrich  
Froning and Deppe  
Robert Deppe  
Dr. M. Fujinaka  
Wayne A. Fuller  
Hon Pong Fung  
Gallery Restaurant  
Howard Thiel  
Robert B. Gauley  
General Filter Company  
John Scholten  
Ross Genovese  
C. M. Germaine

**Gibbs Plmng. and Htng.**

Karl Gilbertson  
Dr. Donald L. Good  
Mortimer Goodwin  
Goodwin, Zimmerman and Co.  
Grand Ave. Service  
L. W. Scheuermann  
Dr. John A. Grant  
Frederick C. Grau  
Dr. John H. Greve  
Charles G. Gray  
A. H. Hagge  
Carl Hamilton  
Kenneth Hampson  
Dr. Tom Hannum  
Wayne V. Harrell  
Dave Hartl  
Vincent E. Hassebrock  
Dr. G. J. Hegstrom  
Ed Hendrickson  
William Herman  
Dr. John Herrick  
Jeffrey Hetzler  
Dr. Howard H. Hildebrand  
Robert L. Hildebrand  
G. J. Hildreth  
Lawrence R. Hillyard  
Dr. James H. Hilton  
Thomas Hinders  
Darrell F. Hiserote  
Dr. Mark Hoffman  
Holiday Inn  
Lyle Wilson  
Gaylord Hovde  
Dr. Trevor Howe  
John Huber Clothing  
Dave Huinker  
Dale O. Hull  
Keith M. Hussey  
Dr. Norman E. Hutton  
Hy-Vee Food Stores  
Lowell Darnell  
Iowa State Memorial Union  
Bruce Hudson  
ISU Vet. Med. Alumni Assoc.  
C. A. Iverson  
Dr. William Iverson  
Edward C. Jacobsen  
Fred W. Jahr  
F. Blaine Jenkins  
Jones Luggage & Leather  
Marion Jones  
Paul R. Jones Sheet Metal  
Paul and Jerry Jones  
KASI Radio  
Dale Cowle  
Forest Kenny  
Kentucky Fried Chicken  
James D. Miller  
Paul Klingseis  
Dean R. Knutson  
Dr. Paul Koellner  
Russell F. Koester  
Daniel L. Krieger  
Dr. Virgil Lagomarcino  
William S. LaGrange  
Landsberg-Klufa Pharmacy  
R. K. Larson  
Robert Lawrence  
Dr. Arlo Ledet  
Clayton Lokken  
Norman L. Loots  
Lee G. Loseke  
Glen Lowman  
Louis G. McCullough  
Bill McGowan  
Jack M. McGuire  
Larry L. McHone  
John L. McKinney  
Dr. James R. McKlveen  
Mack D. Maffett  
John Mahlstede  
Doug Malcolm  
Arthur R. Mann  
Dr. Arnett Matchett  
Mathison Motor Company  
Art & Dick Mathison  
Louis Menze  
Mert's  
Vernon M. Meyer  
B. O. Mickelson  
Frank E. Miller  
Dr. Lyle D. Miller  
Minsky's Pizza Joint  
Montgomery Ward & Co.  
Ian D. Moore  
Wayne R. Moore  
Gary Mulhall  
Robert C. Mulhall  
Alfred H. Munn  
Dr. Alan K. Munson

**Kermit B. Myers**

Donald E. Nelson  
John R. Nervig  
Harold Newell  
Bud Nichol  
Harold Nichol  
Frederick Niemann  
Jack Nordyke  
Northwestern Bell Telephone Co.  
Earl W. Ogawa  
Olson Manufacturing Co.  
Dean Hutson  
Memory of Ralph H. Olson  
Alan Oppedal  
Edward L. Ornberg  
Wayne D. Ostendorf  
Donald B. Ostermann  
Dr. R. Allen Packer  
Burl A. Parks  
Dr. W. Robert Parks  
John Parris  
Harold D. Paul  
Dr. Phillip T. Pearson  
Dr. Leo C. Peters  
Dr. Elroy Peterson  
Fred and Neva Peterson  
J. C. Penney Co., Inc.  
Ken Hansen  
J. C. Picken, Jr.  
Pizza House  
Dave Lepovitz  
F. W. Pollman  
Neal Popelka  
Dr. Max Porter  
The Print Shop  
Robert D. Pyle  
Ramada Inn  
Dr. Frank K. Ramsey  
R—B Associates, Inc.  
Warren Rademacher  
William O. Reece  
Reeds Olds-Cadillac, Inc.  
Reese Electric Motor Co.  
Donald J. Rhead  
Lynn D. Richardson  
C. H. Ringgenberg  
Mark Ritland  
Richard J. Roseland  
Dr. Paul E. Rosenberry  
William B. Rozeboom  
Ron Rubek  
Norman Rudi  
Earl Rusher  
Carl V. Rusk  
Mildred Ryan  
John Sams  
Charles G. Sanders  
Schill Builders  
Frank Schill  
Harry J. Schmidt  
Mal Schmidt  
Schoeneman Bros. Co.  
Leonard Tipping, Mgr.  
Sears, Roebuck & Co.  
G. M. Keenon  
Dr. H. L. Self  
Severson Insurance Agency  
Jan Severson  
Joseph Shaddy  
Shaughnessy's  
Pat Shaughnessy  
Paul H. Sidles  
Skele Motor Company  
L. J. and Art Skele  
Paul E. Skarshaug  
Kenneth Smith  
Dr. L. Glenn Smith  
Stuart N. Smith  
Russell S. Soper  
Maurice Soultis  
William L. Stewart  
Al Stoll  
Dr. Jack E. Stuldant  
Jerome H. Symons  
Tavco's  
Earl Trow  
Lois E. Thomas  
Kenneth J. Thompson  
Ronald L. Thurman  
L. C. Timm  
Todd & Sargent Construction  
Dr. George R. Town  
D. S. Triplett  
Triplett Real Estate & Ins. Inc.  
Tryon Real Estate  
Dale Tryon  
Twentieth Century Bowling  
Floyd Penkhous  
R. "Bill" Udovich

**Dr. M. A. Ukena**

Larry Van Fossen  
Dr. Stephen Van Houten  
Dr. Martin Vander Maaten  
Van Voorhis Heating & Cooling  
Chuck VanVoorhis  
Tom Vaughn  
Donald E. Voelker  
William B. Vogt  
John E. Wakefield  
Dr. David M. Wall, Jr.  
A. Weldon Walsh  
Donald E. Wandling  
Walters Firestone Store  
J. William Waters  
Burton H. Watkins  
Waldo W. Wegner  
John H. Wessman  
Ross Weuve  
George White Chevrolet  
Rex H. Wiant  
Dr. Richard William  
Dale R. Williams  
Douglas C. Williams  
Wilson Co.  
Douglas A. Wilson  
Woodworth D—X Service  
Gene Wozniak  
Bruce C. Wright  
Earl O. Wright  
Terry Wycoff

**ANKENY**

Roger Burns  
Cory's Inc.  
Daryl L. Grove  
James L. Pedelty  
Eugene Samuelson  
George E. Schlenker  
Ronald C. Strother  
Myron Van Cleave

**APLINGTON**

Longnecker Implement Co.

**ARCADIA**

Collison Brothers

**ATLANTIC**

C. D. Andrews  
John Budd  
Capell Implement  
First Whitney Bank & Trust  
Gordon M. Nicholas  
George Mally  
Dean Robinson  
Wayne A. Rogers

**AUDUBON**

Audubon Produce Co.  
John Parrott, Jr.  
Lindholm Co.  
McFadden Funeral Home  
Leo R. Kessler  
W. P. Manatt

**BATTLE CREEK**

Iowa Beef Industry Council  
Bert Eason, Chrm.

**BAYARD**

Maury Hope

**BEAMAN**

Charles Neff

**BELLE PLAINE**

Stok's Country Store

**BELMONT**

McLaughlin Chevrolet  
Steve McLaughlin  
M. L. Followwill  
Richard Thompson

**BETTENDORF**

Robert W. Boeke  
Frank Gaynor Co., Inc.  
John T. Murray

**BLOOMFIELD**

Kenneth Whirlett

**BONDURANT**

Howard A. Elson

**BOONE**

Wilford Aspholm  
Betten Assoc.  
Dwain K. Betten



# IOWA STATE UNIVERSITY

## Cyclone Century Club

**Boone Touchdown Club**  
 Boyd's Dairy Stores  
 James E. Boyd  
 Boone & Ames  
 Brooks Equipment Co.  
 Clara Brown  
 Victor Brunner  
 Caffrey Cigar Co.  
 Joe Caffrey  
 Citizens National Bank  
 George E. Taylor  
 Clark Real Estate, Inc.  
 J. G. Clark  
 Dr. G. W. Cornwell  
 Gary W. Creasman  
 Duffy's Appl. and T.V.  
 Jean and Stephan Duffy  
 Eckstein Diamonds  
 George Eckstein  
 Fisher Shoe Company  
 Robert L. Fisher  
 Gillespie Motors  
 Duane Haglund  
 Roland Hamman  
 Hawkeye Savings & Loan  
 Boone & Ames  
 Judge Paul E. Hellwege  
 Imperial Inn  
 Dr. Dennis D. Kollbaum  
 Wayne Koos  
 Wayne R. Lindell  
 Lawrence J. Loehrer  
 Merit Baking Co.  
 N. L. VanDenBaard  
 Moffitt Ford  
 T. N. Nelson  
 George W. Peterson  
 Redeker Furniture Company  
 Robert Reedholm  
 Dr. Wayne E. Rouse  
 Dr. H. P. Sandberg  
 Schultz Labs, Inc.  
 Richard B. Schultz  
 Dr. Gerald H. Sutton  
 Virginia's House of Flowers  
 Wendell Lowe  
 William W. Wright

**BOUTON**  
 Clyde C. Dills

**BOYDEN**  
 Lee Moret

**BRAYTON**  
 Fred M. Vorrath

**BREDA**  
 Dale Bruning

**BRIDGEWATER**  
 Lee Nichols

**BRITT**  
 First State Bank  
 George Merriam

**BROOKLYN**  
 Manatt-Carter Paving Co.  
 K. E. Carter

**BURLINGTON**  
 William A. Kuehn  
 Robert H. Tiemeyer

**CAMBRIDGE**  
 Dale A. McHone

**CARLISLE**  
 Charles R. Eichacker

**CARROLL**  
 C. D. Andrews  
 Bierl Const. Co.  
 Carroll County State Bank  
 Carroll Veterinary Clinic  
 Marv Collison  
 Comito Realty Co.  
 Bill Comito  
 Commercial Savings Bank  
 Ralph M. Crane  
 Crouse Cartage Company  
 Paul Crouse  
 Dearduff's Inc.  
 William Farner  
 Leo Fitzpatrick  
 Fleskes Construction  
 Archie J. Gietz  
 Dr. N. J. Gradoville  
 James L. Grettenberg  
 H & H Company  
 William Hamman  
 Juergens Produce and Feed Co.  
 Jungs Bakery  
 Lane Audio Visual Center  
 Carroll Lane

Ronald W. Muhlbauer  
 J. Harold Rice  
 Schroeder Assoc.  
 L. A. Smith Co.  
 Crowley Spindler  
 B. G. Tranter  
 Wunschel Law Firm, Inc.  
 Russell Wunschel

**CEDAR FALLS**  
 Robert Beck  
 Brookside Vet Center

**CEDAR RAPIDS**  
 Van C. Coleman  
 Dr. Dean C. Frey  
 David H. Hammond  
 Roger Hansen  
 Donald P. Hattery  
 Dr. Glen C. Hornbuckle  
 Iowa Midland Supply Co.  
 Jeff Johnson  
 Martin E. Kacena  
 King's-Builders Material  
 Ed Doty  
 Larson & Unzeitig, Inc.  
 Clark K. Parks  
 William J. Probert  
 Dr. W. J. Robb  
 Lewis H. Springman  
 Steltzer Lincoln-Mercury  
 Paul Steltzer  
 Jerry Ward  
 Wayne H. Whitmer  
 Henry P. Wilder

**CHARITON**  
 William J. Carter  
 First State Bank  
 Roy E. Frizzell  
 P. G. Hibbs

**CHARLES CITY**  
 Robert H. Cooper  
 Dan N. Frudden  
 Sar Hybrids, Inc.

**CHEROKEE**  
 Willard H. Fee  
 France Grain & Feed Co.  
 F. R. Graves  
 Thomas B. Grundman  
 Dr. A. W. Krause  
 Rogge & Tveitnes

**CHURDAN**  
 D. N. Berry

**CLARENCE**  
 Merlin D. Hulse

**CLARION**  
 Robert L. Davison  
 Duane W. Sandage  
 Melvin Waldon

**CLEARFIELD**  
 Dr. John Thompson

**CLEAR LAKE**  
 Dr. John D. Borthelsen  
 Robert Treloar

**CLARINDA**  
 Robert Brown  
 John R. Hunter, Jr.  
 Dr. Edward C. Winter

**CLEMONS**  
 Ralph Howe

**CLINTON**  
 Edward Howes  
 Tommy G. Stamp  
 Roscoe C. Wagner

**COLFAX**  
 Don Faidley

**COLLINS**  
 Donald Struthers

**COLO**  
 John Niland  
 Art Riese

**COLUMBUS JUNCTION**  
 Robert & Robin Greene

**CONESVILLE**  
 Robert L. Brown

**CONRAD**  
 John Dowden  
 Green Products Co.

**COON RAPIDS**  
 Jake Bell  
 Maurice Campbell  
 Dr. R. E. Shirkbroun  
 Wesley L. Thomas

**CORNING**  
 Paul's Feed & Supply  
 Claude H. Paul  
 Dr. Lowell H. Roberts  
 Dr. James E. Shaw

**CORWITH**  
 Thurman Gaskill  
 James A. Mullins

**CORYDON**  
 Citizens State Bank  
 Bo Grisamore

**COUNCIL BLUFFS**  
 Russell C. Brandt  
 Council Bluffs Savings Bank  
 Ed H. Spelman, Jr.  
 State Bank & Trust

**CRESCO**  
 Gary Miller  
 Richard M. Reinhart

**CURLEW**  
 Richrd Johnson  
 Richard P. Kibble

**CRESTON**  
 James C. Almquist  
 Leo A. Avazian  
 Stephen B. Kenkel

**DALLAS CENTER**  
 Brenton Bros. Inc.

**DAVENPORT**  
 Patrick J. Hammes  
 Roy Keppy  
 David Kling  
 Dr. Merle Lang

**DAYTON**  
 Jens Rugaard

**DECORAH**  
 Erdman Engr. Service  
 Lowell P. Erdman  
 Frank Holland

**DEDHAM**  
 Stangl Ins. Agcy.

**DELMAR**  
 Robert G. Schmidt

**DENISON**  
 Bilsten Bros. Const. Co.  
 Don & Max Bilsten  
 Denison Drug  
 Farmbest, Inc.  
 Farmland Food, Inc.  
 KDSN Radio

**DES MOINES**  
 Accoustical Specialties, Inc.  
 Myron R. Olson  
 Richard A. Adams  
 Robert D. Akre  
 Ankeny — Des Moines Plumbing  
 Robert B. Ash  
 Dr. M. E. Alberts  
 Backman Sheet Metal  
 Edward A. Baier  
 Joe Barksoale  
 Richard H. Beatty  
 William H. Beswick  
 Boldt Industries, Inc.  
 Joseph E. Borg  
 Thomas R. Borg  
 C. Robert Brenton  
 Ronald D. Brown  
 Building Maintenance Service  
 Richard G. Bullard  
 Henry H. Byers  
 Can-Tex Industries  
 Dean Carlson  
 Carlson Oil Co.  
 Charlie Mitchell  
 Garland K. Carver  
 Hugh H. Clarke  
 LeRoy D. Claycomb  
 David H. Comann  
 W. O. Conyers  
 Crescent Chevrolet  
 J. R. Piggott  
 Howard W. Crist

Cunningham-Reis Co.  
 Earl Anderson  
 Robert W. Dahlberg  
 Dain, Kalman & Quail, Inc.  
 Dalbey-Lister Concrete  
 Walter W. Davis  
 Deremiah Plmg. and Htng.  
 Des Moines Savings and Loan  
 Peter P. Dickinson  
 Dickson Industries Inc.  
 Robert Dillon  
 Ed Donahue  
 Douglas Machinery  
 Herb Drey  
 Brian C. Dunker  
 Eagle Iron Works  
 Thomas B. Eveland  
 Fair Play Mfg. Co.  
 James E. Fay  
 James M. Finley  
 J. Y. Foster  
 F—S Services, Inc.  
 Don Marcool, Charles Steen  
 Claude Freeman  
 Robert F. Galligan  
 Dr. John Garfield  
 Don H. Geiger  
 G. G. Geraghty, Jr.  
 Donald H. Gerdorn  
 Arnold Golieb  
 GMH Fluid Power & Mach. Inc.  
 W. A. Goodwin  
 John G. Graham  
 Grand Ave. Vet Hospital  
 John W. Patterson  
 Philip Grask  
 Ailyn E. Hagen  
 Kenneth C. Halligan  
 Robert Hanrahan  
 Russell J. Hansen  
 Robert Helmick  
 E. George Henningsen  
 Grover Hertzberg  
 Iowa Industrial Products  
 Dick Weisenbach  
 Iowa Road Builders  
 Iowa Truck Center, Inc.  
 C. R. Irvine  
 John D. Iverson  
 Albert L. Jennings  
 Jester & Sons  
 Robert Jester  
 Carroll F. Johnson  
 Carroll L. Johnson  
 Roger A. Johnson  
 Thomas A. Johnson  
 Hubert C. Jones  
 Donald Jordahl  
 Kaser Construction Co.  
 Gerald L. Katzmann  
 Keith Electric Co.  
 William R. King  
 Gerald Kirke  
 Merle Knuth  
 Dr. Robert L. Kollmorgen  
 Vera Kolis  
 Robert W. Kuhlman  
 Dr. Larry L. Lang  
 Harold W. Larson  
 Gary V. Lewellyn  
 Lincoln Grain, Inc.  
 Marshall G. Linn, Jr.  
 Marshall G. Linn, III  
 Byron W. Lodwick  
 Bruce Longstreet  
 John E. Luhring  
 George Luke  
 James Lynch & Assoc. Inc.  
 Dr. David L. McCoy  
 James R. McDermott  
 C. H. McGuiness Co., Inc.  
 McHenry Dist. Co.  
 Bruce W. McKee  
 John J. McLaughlin  
 James T. Machia  
 J. Robert MacNaughton  
 George F. Malcolm  
 Richard Marshall  
 Massey Ferguson, Inc.  
 Charles J. Maxwell  
 J. B. Mefford Co.  
 Allen E. Meyer  
 Midland Builders Co.  
 William C. Knapp  
 Larry L. Miller  
 Edward Morelock  
 Dr. Wm. Morrissey  
 James R. Mumford  
 David L. Nagel  
 National Travelers Life  
 Paul H. Seltz  
 Roy W. Nelson  
 Gordon Neumann  
 Harold C. Neumann  
 Harold C. Neumann, Jr.  
 John E. Neumann  
 Oscar D. Neumann

Walter N. Neumann, Jr.  
 Walter N. Neumann, III  
 Dr. Owen J. Newlin  
 North American Delivery Co.  
 Joe T. Chiodo  
 William Orth  
 William H. Owen  
 Bob Palmer  
 Reaves E. Peters  
 Plaza State Bank  
 Forest Lewis  
 Plumb Supply Co.  
 R. S. Prewitt Company  
 Robert S. Prewitt  
 George M. Putnam  
 Gerald Rickert  
 John Ringland  
 Dr. Van C. Robinson  
 Leo M. Roepke  
 James L. Rogers  
 Robert Root  
 Ronald L. Roth  
 Gene Roush  
 Richard E. Sargent  
 Robert E. Savage  
 Tom Sawyer  
 A. A. Schneiderhahn Co.  
 Paul Mollman  
 Lyle J. Schrum  
 Servicemaster, Inc.  
 Austin Rice  
 Don P. Shafer  
 Shaw, McDermott & Co.  
 Robert Kirke  
 John D. Shors  
 S & J Marine, Inc.  
 Fred Spuzello  
 SRB Corporation  
 Sid Bradley  
 Charles H. Stoll  
 Charles L. Strom  
 H. I. Talbot  
 Franklin Tappen  
 Lester L. Thompson  
 Todds, Inc.  
 Alan Niedermeier  
 Donald E. Topf  
 James Trager  
 Transcon Lines  
 Translates Ins. Agcy.  
 George E. Turner, Jr.  
 Valley Bank & Trust Co.  
 Venetian Orn. Iron Works, Inc.  
 Mario Zenli  
 Vickers—Des Moines Oil Co.  
 Waldinger Corporation  
 James H. Waters  
 Evert Weeks  
 G. LaMonte Weissenburger  
 George L. Wendell  
 Allen Whitfield  
 Wilson H. Witt  
 Charles Wittmack  
 George I. Wood, Jr.

**DEXTER**  
 Paul F. Clausen

**DOWS**  
 McAdams Livestock  
 Bus McAdams

**DUBUQUE**  
 Joseph V. Cullen  
 Dubuque Packing Co.  
 Ivan Dull  
 Interstate Power Co.  
 Dr. Merrill M. Vanderloo

**DYERSVILLE**  
 Dyersville National Bank  
 Dale R. Luckow

**DYSART**  
 Charles Leo

**EAGLE GROVE**  
 Wendell W. Bailey  
 Boone Valley Co-op  
 Keith Voigt  
 Dr. John A. Gazaway  
 Golden Eagle Pork Show  
 Dean Moser  
 Larry Hill  
 Drs. Varland & Johnson  
 M. & M Products Co.  
 James D. Myers  
 Charles Oldsen  
 David A. Rouse  
 Secury Savings Bank  
 John Govern, Jr.  
 Umthun Trucking  
 Robert VanHouten  
 Clarence Williamson



# IOWA STATE UNIVERSITY

## Cyclone Century Club

### EARLHAM

Donald Maas

### ELDORA

William C. Dagli  
Cecil F. Rooks  
Dennis Wood

### ELDRIDGE

David E. Stephens

### ELLSWORTH

Dwayne Hill  
Wallace Iverson  
Vernon E. Peterson  
Emery Tegland  
Thompson Hatchery  
Dale Cook

### EMMETSBURG

Bill Brennan  
Emmetsburg Grain Co.  
James M. Thompson  
Dr. William Frevert  
John Kerber  
Jerome Klepper  
Ted's Super Valu

### ESSEX

Keith Carlson  
J. C. Mecum

### FAIRFIELD

Fairfield Eng. & Mfg. Co.  
Cloyce D. Palmer

### FOREST CITY

Robert V. Fowser  
Donald E. Snyder  
Glen Wilson, Jr.

### FORT DODGE

Dr. Hoyt H. Allen  
All Wheel Drive Co.  
Arnold Motor Supply  
Larry Wegner  
Assoc. Engrs., Inc.  
Bob Payer  
Dan W. Barrett  
Bob's Tire Service  
Brokaw Supply Company  
W. E. Brokaw, Jr.  
Robert Clawson  
Dairy Queen  
Tom Pinkert  
Fred M. Dalvey  
Ed DeBakey  
Bernard J. Ermels  
John Evans  
Rachel Evans  
Farm Bureau Ins. Services  
Vern Renken  
First National Bank  
Earl J. Underbrink  
Pete Garatoni  
William S. Gibb  
Leon Griffin  
John E. Hayes  
Neil Hinds  
Floyd D. Huling  
Joseph Jackson  
Roland B. Jacobs  
Everett Johnson  
Richard L. Jorgensen  
Josephson Radiator Shop  
Kautzky's Sporting Goods  
Kersten, Opheim, Carlson & Esteff  
Jerry Kilper  
Levien Chevrolet Co.  
Dr. & Mrs. J. G. McCarroll  
W. C. McCarten  
J. Gerald McTigue  
Harlan Pfaff  
Robert Pingel  
Quality Plus Products  
Tom Schmoker  
Dr. James D. Rhodes  
Ridgewood Lanes  
Willis Warner & Don Larson  
John E. Rowles  
Lloyd C. Schubert  
The State Bank  
Richard Smith, Pres.  
Swaney Equipment Co.  
George H. Lawler  
Shirley Thornton  
Dr. Richard C. Tripp  
Union Trust & Savings Bank  
Pete Garatoni, Pres.  
Russell Whitney  
Dr. Ralph Yoder

### GARNER

Edward D. Buntentbach  
Donald Greiman  
Dr. Henry G. Voetberg

### GARRISON

M.L. Jorgensen

### GLADBROOK

John Putney

### GLIDDEN

Doug Doyle  
Glidden Farm Equip.  
Curtis E. Hofstad  
A. Moorehouse Company  
Fred Rudi

### GOWRIE

Jack D. Burnett  
Doug Miller

### GRAND JUNCTION

Robert Clause  
Roger Clause  
Melvin W. Karber  
Lynn D. McConnell

### GRINNELL

James W. Buck  
Dr. Merle Doty  
L. G. Keeney  
Donald L. Pederson  
Mike Peterson

### GREENFIELD

Feeders Service, Inc.  
Dean Holland  
McCunn Implement Co.

### GRIMES

John Olson

### GRISWOLD

Charles and Cindy Miller

### GRUNDY CENTER

Ralph A. Anderson  
Keith E. Carter  
Royce J. Fichtner  
Frederick Furniture, Inc.  
Keith Myers  
Spokesman Press

### GUTHRIE CENTER

Dr. John P. Glenn

### HAMPTON

Jopseh Barr  
A. C. Benton, Inc.  
Brown & Brown  
Mr. Ed's  
Sorenson Olds-Cadillac

### HARLAN

Charles H. Foster  
Harlan Builders  
Dave Maupin  
Dr. O. M. Juhler  
Steven F. Mores  
Jack Noble  
Bruce Ouren  
Dennis E. Stamp  
H. S. Vanderlinden

### HOMESTEAD

Edward A. Pundt

### HUBBARD

D. W. Heineking, Inc.  
Marvin R. Nygaard

### HUMBOLDT

Dr. T. F. Bartley  
Joe Dodgen  
Dr. Dean C. Harmon  
Humboldt Concrete Prod.  
Ed Warren  
Humboldt Implement Company  
M. E. Johnson  
Jennings Clothiers  
C. H. Lewellyn  
Bob Mickey Motors  
Herbert Moech  
Dr. M. L. Northup  
Sande Construction & Supply

### HUXLEY

James N. Hall  
John W. Trunkle

### IDA GROVE

Clayton Whitney

### INDEPENDENCE

Wapsie Valley Creamery, Inc.  
W. C. Nielsen

### INDIANOLA

Robert M. Wolfe

### IOWA CITY

Hugh A. Dunlap

### IOWA FALLS

Concrete Products Company  
Luke Altfillisch  
R. C. Haltom  
King Construction Co.  
Prestressed Concrete  
James Boehmle, Jr.

### IRVINGTON

Dole Construction Co.

### IRWIN

Irwin Farm Supply

### JEFFERSON

Elmer F. Eggmann  
Kern Elerick  
Home State Bank  
Gerald Clause, Pres.  
Miller Realty  
Leonard Miller  
Wayne M. Rush  
M. H. Stepleton  
Del Van Horn

### JEWELL

William A. Minert  
Dr. C. L. Nelson

### KANAWHA

Farmers State Bank  
Dr. Leon Henning

### KELLEY

Froning & Deppe  
Dan Froning

### KINGSLEY

Dr. William E. Brown

### KNOXVILLE

Vernon R. Bruce  
Dr. Sam T. Coughlin  
Goff Brothers  
Thomas & William Goff  
Knoxville Veterinary Clinic  
Marion County Savings & Loan  
Dave Gruhn

### LAKE CITY

Bowie Mfg., Inc.  
Dr. M. C. Bowie  
Bruce Fell  
Dr. James C. McCauley  
Dr. Martin McKenney  
James Richardson

### LAKE MILLS

Lake Mills Lumber

### LAKOTA

Dr. Craig M. Ellsworth

### LAMONI

Lamoni Farms, Inc.

### LA PORTE CITY

Joe S. Brandt

### LATIMER

Jeffrey L. Henning

### LAURENS

Fred J. Ludwig  
Dan G. Younggreen

### LEHIGH

Date Westre

### LENOX

Richard L. Wilson

### LOGAN

Clinton Keay

### LOST NATION

Dr. Ken Randolph

### LYTTON

Wayne Grodahl  
Wayne Jackson

### MANCHESTER

Florian Neuroth  
John Vermazen

### MANLY

Manly State Bank  
Williams Parks

### MANNING

Leo J. Bruck  
Claus H. Bunz  
Ivan Opperman  
Puck Implement  
W. C. Puck

### MANSON

Randy Christensen  
Dalton Press, Inc.

### MAQUOKETA

Edward L. Tubbs  
Nolan Zugschwerdt

### MARION

Jack Fitzgerald  
Klopfenstein, Wogan &  
Mangold, D.V.M.

### MARSHALLTOWN

Arbie Mineral Feed Co.  
James H. Boyd  
Jim Breed's Standard, Inc.  
Wayne H. Britten  
Glenn F. Brackett  
Walter E. Brown  
Burkhart-Jensen, Inc.  
Graham M. Condie  
William H. Edens  
Dean Garland  
Dr. John Garland  
Dr. Douglas D. Hildebrand  
Verle J. Hunt  
R. W. Kemler  
Gordon Leth  
Lynk Bros. & Baird  
Earl W. Olson  
Walter Lyons  
Pat Manning Chevrolet  
Marshall Office Supply  
Marshall Printing Co.  
Meeker's Dry Cleaners  
Charles B. Hager  
James R. Moore  
Morrison Cabinet Shop  
Robert Morrison  
L. E. Myers Company  
F. E. Ernst  
Mike O'Toole  
Roscoe W. Packer  
Tom Shive  
R. S. Stover Co.  
John K. McKay  
Larry Swartz  
Dr. Tomas A. Underkoffler  
Dr. Russell H. Watt  
William Whitehill, Jr.  
D. Vincent Williams  
Ralph W. Williams

### MASON CITY

Frank Evans  
First National Bank  
Jack Nielsen, Pres.  
Harlan W. Gorton  
Green Mill Restaurant, Inc.  
R. S. Papaloni  
Hewett Wholesale, Inc.  
Bill Hewett  
Iowa Kemper Ins. Co.  
E. C. Jones  
Robert H. Isensee  
Milton D. Kubicek  
Dr. Ray F. Miller  
Maynard Nelson  
Ray Pauley Co., Inc.  
Dr. Samuel D. Porter  
Dr. William C. Rosenfeld  
Frank Schmitz, Jr.  
United Home Bank & Trust Co.  
R. H. Isensee  
Wallace, Holland, Kastler  
& Schmitz  
Dr. George West

### McCALLSBURG

Alan Britten

### MINBURN

Raccoon Valley State Bank  
Leonard C. Wise

### MITCHELLVILLE

Dr. Lawrence H. Birchmier

### MONROE

Monroe Animal Clinic  
Dr. Dayrl Horman

### MT. AYR

Dixon-Elliott, Inc.  
Jack Elliott  
Herman Fennema  
Mike Warin

### MT. VERNON

Richard F. Brisbin  
Dr. R. R. Voetberg

### MOVILLE

First Trust and Savings  
Howard Logan  
Robert Logan

### MUSCATINE

Thomas J. Hoopes  
Paul C. Sandy

### NEVADA

Steve Bodenstener  
Arthur W. Borton  
Thomas J. Cahill  
Jim Christy  
Mert Coover Chevrolet  
Robert Dunshee  
Dr. Robert Eggers  
Gold Electric Co.  
John R. Hattery  
Carl F. Hertz  
Ray Lounsberry  
Dr. Michael Neff  
David Rapp  
Jerry D. Rhodes  
Ray Scott  
Scudder's  
Richard Settle  
John Stark  
Bob Williams

### NEWTON

Frederick D. Collins  
Jasper Co. Savings Bank  
Joel Johnson  
Robert Johnson  
Meisner Electric Co.  
Robert E. Nelson  
Newton Animal Clinic  
Newton National Bank  
Robert L. Smith

### NODAWAY

Scott and Bruning  
Wayne Scott

### NORTH LIBERTY

Kudrie, Carter Sheridan  
Joseph Greslik

### NORTHWOOD

Milo Pangburn

### OAKLAND

Carrick Farm Supply  
Vern Carrick  
Ronald W. Wright

### ODEBOLT

Dr. C. J. Schwartz

### OGDEN

John C. Hunter  
Ogden Bowl

### ONAWA

Onawa State Bank  
Gerald Anderson

### OSAGE

Mitchell Co. Press News  
Roger D. Poppen

### OSKALOOSA

Garden Engineering Serv., Inc.  
John W. Hesling  
John W. N. Steddum  
Mahaska Veterinary Clinic  
Pizza Den  
Irwin J. Garland  
Pat Supple

### OTTUMWA

Mrs. John Dotterer  
George W. Evans  
Robert H. Meier  
Allen B. Sharp

### PARKERSBURG

Parkersburg State Bank  
Eldon Hoppenworth

### PERRY

Bill W. Carstens  
Carroll R. Collins  
Lauterbach Chevrolet  
Ray Lauterbach  
Richard Lowe  
Loren F. Marker  
McAtee Tire Service, Inc.  
David Goodrich  
Perry State Bank  
Mel Shanda



# IOWA STATE UNIVERSITY

## Cyclone Century Club

**PLEASANTVILLE**  
Paul W. Harp  
Steve D. Heaberlin

**POCAHONTAS**  
Kleen & Peterson Ins. Agcy.

**POSTVILLE**  
Citizens State Bank

**PRAIRIE CITY**  
J. L. McKlveen  
Dr. J. W. Walker

**RADCLIFFE**  
Gary Houck  
Gary Larson

**RANDALL**  
Randall-Story State Bank  
C. B. Kinseth

**REDDING**  
Craig Elliott

**RED OAK**  
Vernon R. Hart  
Red Oak Greenhouses  
Dallas G. Johnson  
Jerry Shellberg  
Robert Tidgren

**REINBECK**  
Marshall K. Harms  
Verne R. Paustian  
Peterson Contractors, Inc.

**RENWICK**  
John A. Walther

**ROCKWELL CITY**  
Gidel & Knop Realty & Ins.  
Earl B. Lemen

**ROLFE**  
William Shimon

**RUTLAND**  
Howard K. McDonough

**SAC CITY**  
Wilmer Christian  
Robert T. King  
John H. Lewis  
LeRoy V. Meyer  
Sac City Boosters  
Chuck Sayre  
Neil Stadman  
John J. Wassom

**SCHLESWIG**  
Carlton Peterson

**SHANNON CITY**  
Warren Kessler

**SHENANDOAH**  
Co-op Oil & Supply  
Walter F. Gourley

**SIBLEY**  
Mike Fleming

**SIoux CITY**  
Wilbur D. Bennett  
W. F. Chauncey  
Fred Davenport  
First National Bank  
Holtze Const. Co.  
H. S. Holtze, Jr.  
Bernard Jones  
L. H. Jones  
Royal Lohry  
Northwestern National Bank  
Richard Pecaut  
Dr. Don Rubel  
Sioux City Engr. Co.  
Sioux City Stockyards Co.  
Standard Ready Mix Concrete  
William H. Burke  
Louis J. Tokar  
William F. Turner

**SLATER**  
Larson Lumber  
Sievers & Sievers, D.V.M.  
South Story State Bank  
Lowell Soderstrom

**SPENCER**  
George A. Heikens, Sr.  
Spencer Const. Co.

**STANHOPE**  
Dr. Jed W. Norris  
Read Motor Company  
Jack Read

**STANWOOD**  
Robert McClellan

**STATE CENTER**  
Central State Bank  
Dee Brothers  
Elmer Eggers  
Glen Eggers  
Randy Hilleman  
Robert Nichols  
Ralph White

**STORM LAKE**  
Victor R. Eaton  
William R. Lanphere  
Shelp Const. Co.

**STORY CITY**  
Gookin Ford Sales, Inc.  
Lyle Helm  
Albert Henryson  
Edgar M. Ose

**STRATFORD**  
Westrum Motors, Inc.  
Dick Westrum

**STUART**  
Roy A. Gilman  
Morrison Chevrolet Co.  
Hank Morrison  
Stuart Vet Clinic

**TABOR**  
First State Bank  
L. F. Seiko  
Paul H. Kilpatrick

**TAMA**  
Howard L. Poitevin

**TITONKA**  
Donald G. Budlong

**TRAER**  
Mike Rickard

**VENTURA**  
Harbor Inn, Ltd.

**VILLISCA**  
David L. Williams

**VINTON**  
Louis L. Lyon

**WALL LAKE**  
Glen Determan  
John Goodenow  
Jerry Schmitz

**WAPELLO**  
Wayne E. Ryan & Sons  
Wapello Vet Clinic

**WATERLOO**  
Norris Annis  
Paul R. Brasch  
Crossroads Ford  
Bill Burton  
Al Goettsch  
David C. Hendrickson  
Milford L. Hurst  
William D. LeCompte  
George A. Loveall, Jr.  
Midwest Food Supply  
G. R. Moore  
Matt Parrott & Son Co.  
Calvin Peterson  
John B. Young

**WAUKEE**  
Leon L. Casten  
Tom Torstenson

**WAVERLY**  
Alfred Janssen  
Waverly Publishing Co.  
Edward Droste

**WEBSTER CITY**  
Russ Cress  
Clare H. Forrester  
First State Bank  
Jack Marget  
Lynn Habben  
Gerald Hunter  
Donald D. Johnson  
Newell S. Johnson  
Elmer H. Larson  
Nissen Packing Co.  
Robert Nissen  
John J. Olson  
Dr. J. L. Placek  
Tom Riemenschneider  
Ray Schlottfeldt

Seneca Foundry Inc.  
Charles R. Stark, Jr.  
Jerry Struck  
Dr. Robert L. Veach  
Webster City Savings & Loan  
Ellis Swon  
Ken Youngsdale

**WELLMAN**  
Baxter Freese

**WEST LIBERTY**  
Dr. John W. Carey

**WHEATLAND**  
Harold R. Lohmann

**WILLIAMS**  
Williams Savings Bank  
J. R. Hensley

**WILLIAMSBURG**  
John G. Cochrane

**WILTON**  
Allen Keppy

**WINTERSET**  
Collins Funeral Home  
R. W. Collins

**WOODWARD**  
Dean and Kay Christian

**WOOLSTOCK**  
Hamer's Hampshires

**OUT OF STATE**  
John R. Alt  
Grand Rapids, Mich.

Kenneth F. Ames  
Peoria, Ill.  
Dale E. Anderson  
Omaha, Nebr.  
Walter C. Berger  
Baltimore, Md.  
R. W. Blumenschien  
Omaha, Nebr.  
Edward J. Bock  
St. Louis, Mo.  
Clifford M. Bosworth  
Lexington, Ky.

Amos J. Bower  
Spokane, Wash.  
Robert O. Brown  
Overland Park, Ks.  
Craig Burroughs  
New Lenox, Ill.  
David M. Butler  
Tempe, Ariz.  
J. R. Castner  
Madison, Wisc.  
J. Howard Dunn  
Oakmont, Pa.  
Richard A. Eggers  
Fairview, Pa.  
James H. Ellis  
Lincoln, Nebr.  
J. P. Eves  
Sun City, Ariz.  
Robert C. Fields  
Chicago, Ill.  
David C. Garfield  
Saddle River, N. J.  
Murray C. Gautsch  
Vero Beach, Fla.  
Charles S. Graber  
Elmhurst, Ill.  
Richard S. Grant  
Toledo, Ohio  
Dr. B. J. Gray  
Valley Forge, Pa.  
Robert W. Hollin  
Dallas, Texas  
Kenneth Hucke  
Jenkintown, Pa.  
George C. Hupp  
Ottawa, Ill.  
Charles H. Ineck  
Bridgeton, N. J.  
Kenneth Kampfe  
Omaha, Nebr.  
Jean Kroeger  
Sioux Falls, S. D.  
Harry P. Lortz  
Coleridge, Nebr.  
Judson McGuire, Jr.  
University Park, Md.  
Sam McMaster  
S. Sioux City, Nebr.  
Ronald L. McVey  
Houston, Texas  
Robert F. Mall  
Aurora, Ill.  
Mallory Constructors, Inc.  
James N. Griswold  
Los Angeles, Calif.

Rowland R. Manatt  
Houston, Texas  
Dr. Orville Minton  
O'Fallon, Ill.  
Dwight E. Nichols  
Tulsa, Okla.  
Vincent W. Nielsen  
Dundee, Ill.  
Arlo W. Paul  
Milwaukee, Wis.  
David Queal  
Sioux Falls, S. Dak.  
William H. Reinhardt, Jr.  
Centralia, Mo.  
John V. Reints  
St. Charles, Ill.  
Steve Remington  
Omaha, Nebr.  
Henry B. Rohwer, II  
Willowbrook, Ill.  
Dr. Darrel Sampson  
Prophetstown, Ill.  
R. H. Schermer  
Columbus, Nebr.  
Harry Shephard  
Bedford, Va.  
Tracy R. Smith  
Pensacola, Fla.  
Walter A. Smith  
Estes Park, Colo.  
Paul J. Telch  
Syracuse, N. Y.  
Charles C. Tice  
Neenah, Wisc.  
Lawrence R. Tollenaere  
South Pasadena, Ca.  
Thomas S. Van Galder  
Maryland Heights, Mo.  
Charles Vogt  
Overland Park, Ks.  
Robert Waldo  
Aurora, Ill.  
Alfred W. Warren  
Glencoe, Ill.  
Ralph Williams  
Naples, Fla.  
Esther J. Wilson  
Dallas, Texas  
W. Lee Wiltzie  
Santa Ana, Ca.  
James Winey  
White Bear Lake, Mn.



**Fill up that empty,  
Sunday night feeling.**



The weekend's over and the dining room's closed. Sunday nights are a drag. So come by McDonald's\* for a delicious Quarter Pounder™, a large order of world famous french fries, and a soft drink. We can't do anything about Sunday nights, except make 'em a little easier on the stomach.



**We do it all for you™**

**Coming Soon!**

**Elfredo  
PIZZA**



*The Secret's in the Sauce!*



**CY WANTS  
YOU**

**FOR U.S. ARMY**

For **Information** | **CALL: DUTCH EYMAN**  
North Grand Mall 232-1334



**Coach  
House**

**CARD & GIFT SHOP**

Complete Line of Cyclone Booster  
and Souvenir needs.....

Featuring:

ISU Practice Jerseys  
ISU Game Jerseys  
ISU Helmets  
ISU Stocking Caps, Scarfs,  
and Mittens  
And Various Other ISU Items

**NORTH GRAND PLAZA SHOPPING CENTER**

Phone: 232-3574

**STOP IN BEFORE OR AFTER THE GAME**



**GO  
CYCLONES**



**CYCLONE  
BOOSTERS**

**AIR CONDITIONING, INC. (A.C.I.)**  
**AMES STATIONERS**  
**ARCHIES GOODYEAR SHOE REPAIR**  
 107 WELCH  
**CENTRAL STATES ROOFING**  
**CHEF'S INN**  
**DURLAM & DURLAM**  
**EVERT'S FLOWERS, INC.**  
**HEINRICH ENVELOPE, INC.**  
 Boone, Ia.  
**H.L. MUNN LUMBER**  
**HUNZIKER & FURMAN REALTY**  
 J4 ROLLAWAY  
**JAMES THOMPSON & SONS**  
**McFARLAND CLINIC**  
**MIDWEST TRANSPORTATION, INC.**  
**NIMS SPORTSMAN'S OF AMES**  
**RATLIFF SPUDNUT SHOP**  
**SEARS**  
**STUDENT SUPPLY**  
**TODD & SARGENT, INC.**  
 WOODWORTH D-X





# at the Brunnier Gallery

Iowa State University Brunnier Gallery is just a year old and already it is established as one of Iowa's most popular galleries.

The gallery opened Sept. 20, 1975, the day on which the Scheman Continuing Education Building and the Stadium were dedicated. Since that time, more than 60,000 persons have visited the gallery to view the permanent Brunnier Collection and the variety of traveling exhibitions and special shows offered there. The gallery occupies the east end of the top floor and its 10,000 square feet make it possible to present several exhibitions simultaneously.

The exhibits at last year's opening attracted large crowds, but there were other high points during the year, too. Exhibits at the grand opening included selections from the Fisher Foundation Collection and the personal collection of J. W. (Bill) Fisher of Marshalltown, the surrealist paintings of New Jersey artist Clarence Carter, selections from the Artists of the Western Frontier Collection owned by Northern Natural Gas Company of Omaha, and the Brunnier Collection of rare art objects and dolls from around the world.

Other popular exhibits were last spring's Bicentennial Quilt Show in which 40 quilts of historic interest were displayed and a show featuring the works of three prominent Iowa artists, Grant Wood, Marvin Cone and Christian Peterson.

Throughout the year the Brunnier Collection forms the basis for specialized displays. The collection was given by Mr. and Mrs. Henry J. Brunnier of San Francisco for display in the Iowa State Center in 1962, long before development of the Center began. The collection includes

pottery, glassware and other objects fashioned over the centuries by some of the world's greatest craftsmen, and an unusual collection of several hundred dolls. The Brunnier Collection was the central feature of an exhibit on glass design and technology called "A Story About Glass."

A lounge adjoining the gallery contains another permanent collection, the etchings of J. N. "Ding" Darling, who for many years was cartoonist for The Des Moines Register. The collection given to the University by the J. N. "Ding" Darling Foundation contains many of his best-known works on conservation subjects.

The first of this fall's shows, "76: 1 Plus 1," ends this weekend. The sculptures, paintings, photographs, furniture and other art forms of many Iowa artists will be displayed until 5 p.m. tomorrow.

When the gallery reopens October 2, wall coverings by Jack Denst, Chicago interior designer, and an exhibit on "Color and the Graphic Arts" will be presented.

A remarkable display, Australian Aboriginal Art, will be at the Brunnier throughout November. Approximately 200 boomerangs, bark paintings, sculptures and carvings, body paintings, bowls and dishes and other artifacts depict the different environments in which the aborigines survived for 40,000 years.

December exhibits at the Brunnier will include American Prints from Wood and sculptures by Sir Jacob Epstein.

The Brunnier Gallery is open from 1 to 5 p.m. on Saturday and Sunday and from 12:30 to 5 p.m. Tuesday through Friday. It is closed on Monday.



Fisher Exhibit at 1975 Opening



Australian Aboriginal Art



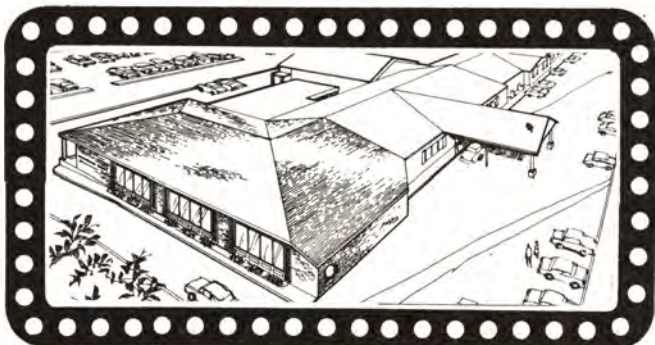
The Brunnier Collection



**On the way home or anytime  
make your next overnight stay  
at the.....**

# IMPERIAL INN

BOONE, IOWA • RESERVATIONS (515) 432-4322



**Enjoy Exciting Live Entertainment, Superb  
Dining and Personal Service at the Imperial  
Inn!**



123 Kellogg • Phone 232-1911

## AMES' FIRST DISCO!

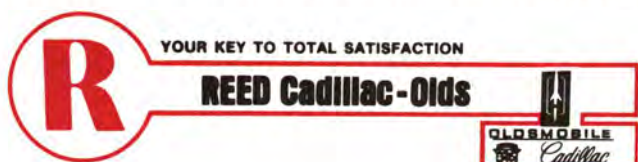
- Game Room - Party Room
- Giant 7-foot Color TV-Free!
- Free popcorn and Schlitz on Tap

**BUY 3 PITCHERS —  
GET THE FOURTH FREE!**

Joe Shaddy - Proprietor

# REED Cadillac-Olds INCORPORATED

**Good Fair deals on all new and  
used cars followed by quality  
service . . . that's Total Satisfaction.**



222 DUFF, AMES, IOWA 50010  
TELEPHONE: AMES, IOWA 515-232-4081  
DES MOINES EXT. 515-244-4082



Open 7 days a week



After the game join us for the best in food and your  
favorite beverage. Live entertainment most every  
night in "Wutzundar."

*Both located across from the old I.S.U. Stadium*



# Have it your way<sup>®</sup>

## BURGER KING<sup>®</sup>

209 LINCOLN WAY • AMES, IOWA

## ANTIQUES



## THE BOARDWALK

FURNITURE WAREHOUSE  
111 North Russell  
Telephone: 515/232-1256  
Ames, Iowa 50010

HOURS  
12 - 6:00 Mon. - Sat.  
12 - 6:00  
Sun. (1st of each Month)



**McAtee**  
**Tire Service**  
AMES, IA.

- Complete Farm, Truck and Auto Tire Service
- Front End Alignment and Complete Brake Service
- Shock Absorbers and Installation
- Midwest's Largest Retread Facility

**Russ Crowner**  
Co-Owner & Manager

2910 South Duff • Phone: 232-6003

**GOOD YEAR**

For more good years in your car





436 South Duff (Hwy. 69) — Phone: 232-3040  
Ames, Iowa

## ISU's #1 Fan Club Stop

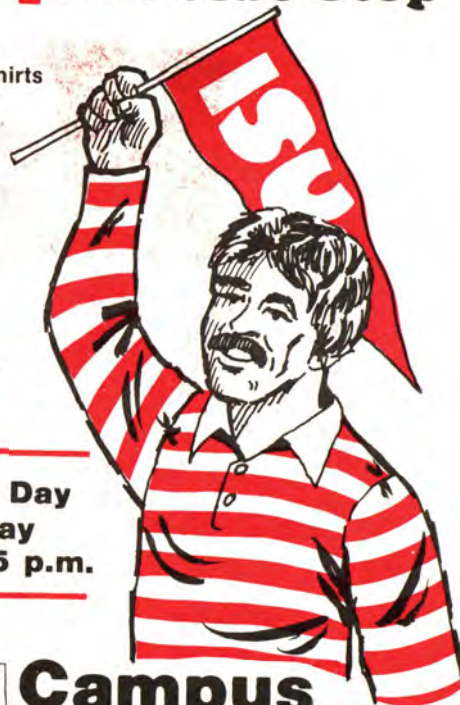
for:  
ISU Sweatshirts  
Rugby Shirt  
T-Shirts  
Sweaters  
Ponchos  
Umbrellas  
Hats  
Scarves  
Jewelry  
Souvenirs  
Newspapers  
Magazines  
Candy

Open All Day  
Saturday  
9 a.m. to 5 p.m.



## Campus Book Store

2300 Lincoln Way Ames, Iowa 50010 Phone: 292-1616



*James W. Bell*  
Co., Inc.  
Construction Equipment

CEDAR RAPIDS

DES MOINES

FORT DODGE



## Take command of your future as an officer in the U.S. Navy.

There aren't many men in this world who can qualify for command of a ship. Few positions of responsibility are harder won...earn more respect...and offer a greater sense of personal accomplishment.

Think you've got that something special it takes to work toward this kind of position...and to master the rigorous training and discipline that will be required of you?

If you can honestly answer "yes" to this question... and can back up your "yes" with a good solid educational background...and meet the other qualifications demanded of a Naval officer, then the Navy will give you every opportunity to work your way up to a position of command.

There's no better time than now to find out if this is the kind of future you're looking for. And if you're the kind of man the Navy is looking for. Stop in and have a talk with your Navy recruiter. Or phone this number:

LT. Dale Hendricks  
46 Dickman Ave.  
Fort Des Moines  
Des Moines, Ia.  
(515) 284-4523



# IOWA ROAD BUILDERS'

## CYCLONE SCOUTING REPORT

Kent State employs a two-quarterback offensive system with either Mike Whalen or Mark Rohalley directing the attack. The term used by the Cyclone staff in describing Kent State is "sound," they do not show as many variations as, say, Air Force, but what they do run is effective. The key running backs are running fullback Andy Ferree, a 195 pound sophomore, and halfback Art Best, a 205 pound senior in his first year at Kent after transferring from Notre Dame. Both are quality rushers.

The Flashes have not been as pleased with the offense, however, as they have with their defense in their first two games. Burly tackles Glenn Deadmond (254 pounds) and Mike Zele (232) have both lived up to their pre-season billing. Deadmond is seeking to repeat on the all-Mid-America Conference honor squad while Zele was the loop's "Player of the Week" in the opening 20-10 win over Central Michigan.

The defense, in fact, has allowed just one sustained scoring drive in two games and has fell victim to bad field position and tough breaks, especially in the 14-12 loss to Ohio last week when a fumbled punt on the one yard line put the Flashes in a disastrous position. The secondary has yet to allow a scoring pass. Sophomore cornerback Harry Liggins and Garey Burt are hard-nosed hitters and safeties Mike Stallworth and Darryl Hoyett give the unit experience.

In the only meeting in past history, Iowa State earned a 17-14 win in 1971 on a last-minute field goal. That win was considered a key in the 8-3 season and eventual Sun Bowl bid.



**IOWA ROAD BUILDERS**  
**AMES IOWA Phone 233-2005**

- ★ READY—MIX CONCRETE
- ★ ASPHALT SURFACING
- ★ CONCRETE PAVING
- ★ UNDERGROUND UTILITIES



Deep Pan Pizza  
Whole Wheat Pizza  
Dessert Pizza

Baked Sandwiches  
Submarines  
Salad bar



# THE GREEN PEPPER

**IOWA STATE CYCLONES**

**FOOTBALL SCHEDULE**

Sept. 11..... DRAKE	Oct. 23..... at Colorado
Sept. 18..... at Air Force	Oct. 30..... KANSAS STATE
Sept. 25..... KENT STATE	Nov. 6..... at Kansas
Oct. 2..... OKLAHOMA	Nov. 13..... NEBRASKA
Oct. 9..... at UTAH	Nov. 20..... at Oklahoma St.
Oct. 16..... at Missouri	

**Cyclone Country's Best!**

**113 Welch • 292-1460**





**Agencies**

**Representing  
Major Insurance Companies**

ALFRED L. STOLL	F. BLAINE JENKINS
NEAL J. POPELKA	DEAN R. KNUTSON
STEVE OSTRUM	DOUG BERGMANN

Telephone: 232-6401

426 5th Street • Ames, Iowa 50010



**JOIN**

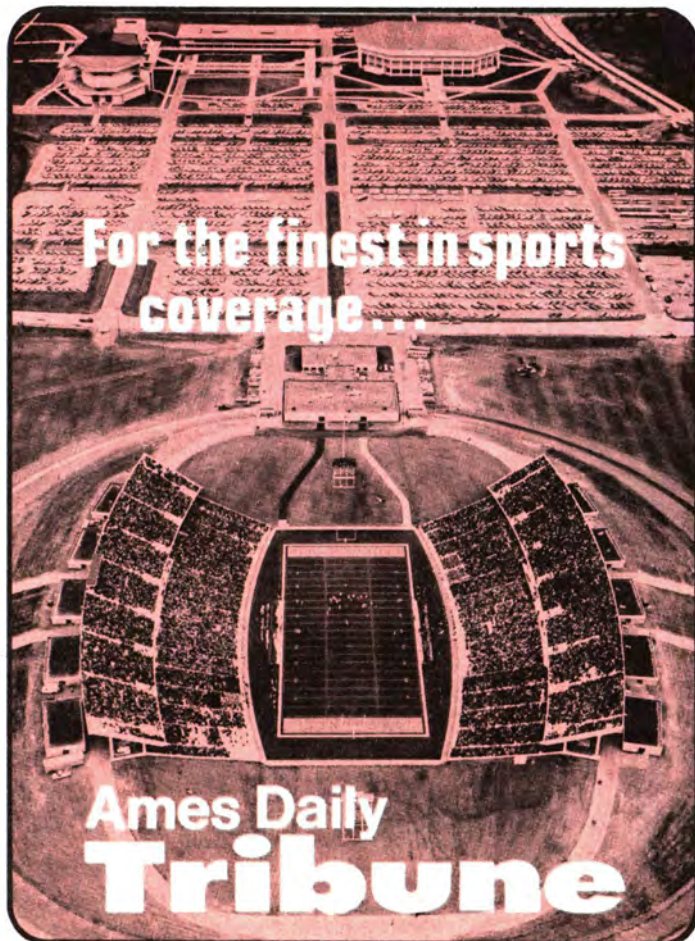
**PETE  
TAYLOR**

and **DAN GRIMM**

**FOR LIVE PLAY-BY-PLAY OF ALL 1976  
CYCLONE FOOTBALL GAMES ON.....**



**RADIO 1350**



**For the finest in sports  
coverage...**

**Ames Daily  
Tribune**

**FOR AN  
ENJOYABLE EVENING  
JOIN US at**

**PALMAS  
RESTAURANT & LOUNGE**

**THE ULTIMATE IN  
STEAKS & SEAFOOD**

*After the game relax in our lounge & enjoy  
your favorite cocktail.*

**Your Hosts -**

**James & Voula Palmas**

217 S. Duff Right next to Travelodge Ames



# ISU MANAGERS



Back Row (l to r): Dean Hollrah, Mark Brauer and Steve Beilby.  
Front: Jim Anderson, Jim Nelson and Keith Berkland.

Meet Me at ....

## Minsky's

pizza joynt

118 Hayward, Campus Plaza

— OPEN 7 DAYS A WEEK —

- Take Out Service
- Two Party Rooms

Ask About Our  
Luncheon Specials and  
Group Discounts





# Iowa State University

## Department of Intercollegiate Athletics

### Recognizes With Appreciation

### the following Iowa Automobile Dealers

Twenty-two Iowa automobile dealers are playing a big part in promoting the Iowa State sports program this year. These fans—and they are rabid backers of all forms of athletic activity—provide the use of automobiles to the department throughout the year. Their program permits Iowa State to make more efficient use of its funds. The department of intercollegiate athletics is deeply grateful to these sports-minded boosters.



**REED OLDSMOBILE-CADILLAC**  
LARRY & DON REED  
222 Duff, Ames  
(Cadillac-Oldsmobile)



**GILLESPIE PONTIAC-OLDS**  
ARCHIE GILLESPIE  
So. Marshall — Boone  
(Pontiac-Oldsmobile)



**RAPIDS CHEVROLET**  
BILL FLETCHER  
601 First Ave., Cedar Rapids  
(Chevrolet)



**MATHISON MOTOR CO.**  
ART & DICK MATHISON  
323 5th Ames  
(Ford)



**McLAUGHLIN BROS. CHEV., INC.**  
JOE & STEPHEN McLAUGHLIN  
Belmond  
(Chevrolet)



**LEVIE CHEVROLET**  
LEO LEVIE  
Crossroads Center Fr. Dodge  
(Chevrolet)



**NUZUM LINCOLN-MERCURY**  
MEL NUZUM  
So. Duff, Ames  
(Lincoln-Mercury)



**COOVER CHEVROLET**  
MERT COOVER  
Lincoln Way Nevada  
(Chevrolet & Oldsmobile)



**CRESS LEASING**  
RUSS CRESS  
Webster City



**GEORGE WHITE CHEVROLET**  
GEORGE WHITE  
Highway 69: & 30, Ames  
(Chevrolet)



**BENSON MOTORS**  
CARL BENSON  
5th & Douglas, Ames  
(Buick-Opel-American Motors)



**MORRISON CHEVROLET CO.**  
HARRY & HANK MORRISON  
Division Street Stuart  
(Chevrolet)



**BURKHART-JENSEN, INC.**  
DWIGHT BURKHART - BOB JENSEN  
Marshalltown  
(Ford)



**LAUTERBACH CHEVROLET**  
RAY LAUTERBACH  
805 Railroad Street Perr  
(Buick & Chevrolet)



**SORENSEN OLDS-CADILLAC**  
DEAN SORENSON  
Hampton  
(Olds-Cadillac, AMC, Chrysler-Plymouth)



**PAT MANNING CHEVROLET**  
WILLARD LOOTS  
Marshalltown  
(Chevrolet)



**CROSSROADS FORD, INC.**  
BILL BURTON  
2033 LaPorte Rd. Waterloo  
(Ford)



**SKEIE MOTOR COMPANY**  
ART SKEIE  
202 South Duff Ames  
(Pontiac)



**HERB MOFFITT'S, INC.**  
CLAYTON & STAN MOFFITT,  
KERMIT ANDERSON  
Boone  
(Ford-Mercury-Lincoln)



**READ MOTOR COMPANY**  
JACK READ  
Highway 17 Stanhope  
(Chevrolet)





# CARDINAL and GOLD ENTERPRISES, INC.

Iowa State's Centralized Source For  
Over 60 Cyclone Booster Items And  
Souvenir Needs

*For more informaton about your Cyclone  
Booster and Souvenir needs, write or call:*

CARDINAL and GOLD ENTERPRISES, INC.

3324 Jewel Drive • Phone: 232-2920  
232-7004

Stop by one of our booths during the five home games.

*North Grand*  
**REXALL DRUG, Inc.**

NORTH GRAND SHOPPING CENTER



*Before the game...  
After the game...*

*Anytime for any occasion.....  
Join the Inn Crowd at.....*

## Holiday Inn®

Our lounge offers the perfect setting for pre-  
game pep rallies and post-game celebrations.  
For meetings, parties, receptions.....you name  
it.....our food service is tailored to your specific  
needs.

Holiday Inn of Ames  
316 South Duff  
Phone: (515) 232-0280  
Lyle Wilson, Innkeeper



# THE BROILER

STEAKS SEA FOOD  
COCKTAILS

*For Reservations*

Phone: 292-2516

Old Highway 30 West



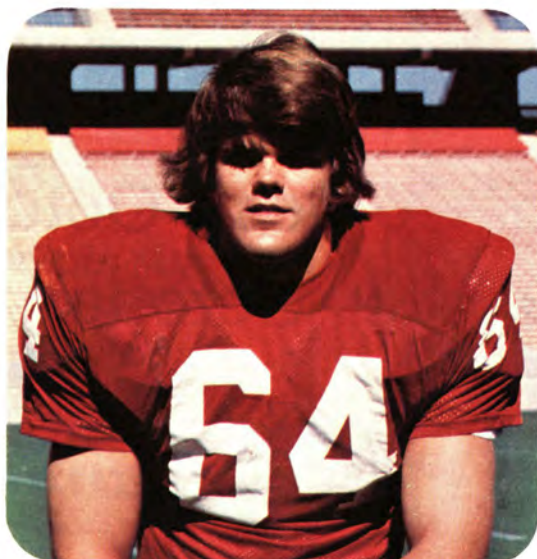
# THESE NORTH IOWA BUSINESSES BACK Our Cyclones!



**90** Maynard Stensrud

**63** Mike Stensrud

**64** Tom Randall



## THE FIRST NATIONAL BANK

of  
MASON CITY



ON THE WEST SHORE OF BEAUTIFUL CLEAR LAKE

VENTURA, IOWA

**A.C. BENTON  
INC.**



"YOUR JOHN DEERE DEALER  
FOR NORTH CENTRAL IOWA"

HAMPTON, IOWA

## LAKE MILLS

FARMERS & MERCHANTS  
STATE BANK

**LAKE MILLS  
LUMBER CO.**

VERNON HELGESON

**ELI COLBY  
COMPANY**

Producers of

**Pot Luck**

**POTTING SOILS**

Lake Mills, Iowa

CYCLONE FOOTBALL 1976



After three hours on  
hard wooden bleachers,  
Spilled mustard and  
a roaring crowd...  
unwind and recuperate  
with your friends at...

**DUGAN'S DELI**



**T**AKE A BREAK WHERE  
**O**LD FRIENDS DRINK  
**R**EMODELED COMPLETELY  
**K**OLD BEER-DRAFT  
& CARRY-OUT  
**S**ERVICE WITH A SMILE

**P**RICES YOU CAN AFFORD  
**U**CAN FIND US AT:  
**B**EST BEER  
UY 2816 WEST ST.  
292-9864

## ***I S U Block & Bridle Club*** ***presents. . .***

The 1976 Little International  
Showmanship Contest, October 8-9  
Barn Dance, October 8

*Welcome ISU students, parents and friends.*

***Y'ALL BE SURE AND COME!***





*Full Service Performance  
at these Cyclone Country  
Phillips 66 dealers....*

**REX SERVICE  
STATION**

LINCOLN WAY  
& FRANKLIN

**GARY THOMPSON  
OIL CO.**

DISTRIBUTOR

**HERB'S "66"  
SERVICE**

412 SO. DUFF

**INTERSTATE  
"66" SERVICE**

I-35 & 30



**"Cy" says . . .**

**Keep us in mind for all of your needs**

**JCPenney**

North Grand Mall, Ames  
Open Weekdays: 10:00 a.m. - 9:00 p.m.



A full line department store geared with the college student in mind.

The latest in fashion apparel for guys and gals.

Sporting goods, photography, auto center service, dorm needs, hardware, western wear, fabrics, and an easy order catalog desk.

**THE  
CAVE INN**

126 WELCH

OPEN 11:00 AM GAME DAYS

**RATHSKELLER  
LOUNGE**

DISCO

GAME ROOM • CARRY OUT BEER  
MIXED DRINKS • TWO BARS

**LUCKY Q**

POOL, BAR, GAMES

**HALF-BARREL**

CARRY-OUT KEGS

BUD • PBR • SCHLITZ  
OLD MILL • MICHELOB

Phone: 292-5046

**SCHOENEMAN**

**FARM AND HOME  
IMPROVEMENT CENTER**

"Quality Service and Price"

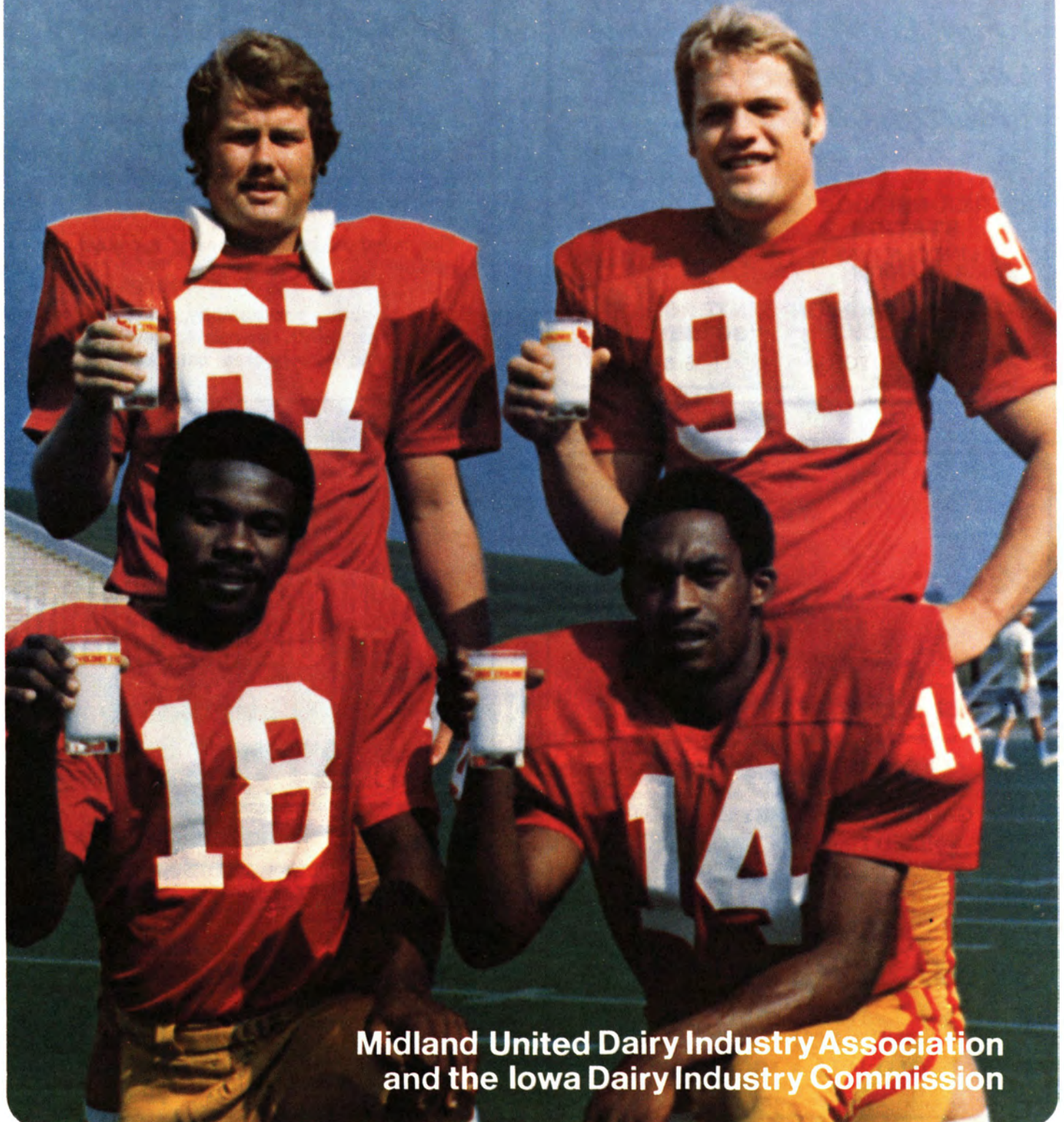
LUMBER AND BUILDERS HARDWARE

Phone: 232-2372 • Ames, Iowa



# Milk...

**another member of the Cyclone Team!**

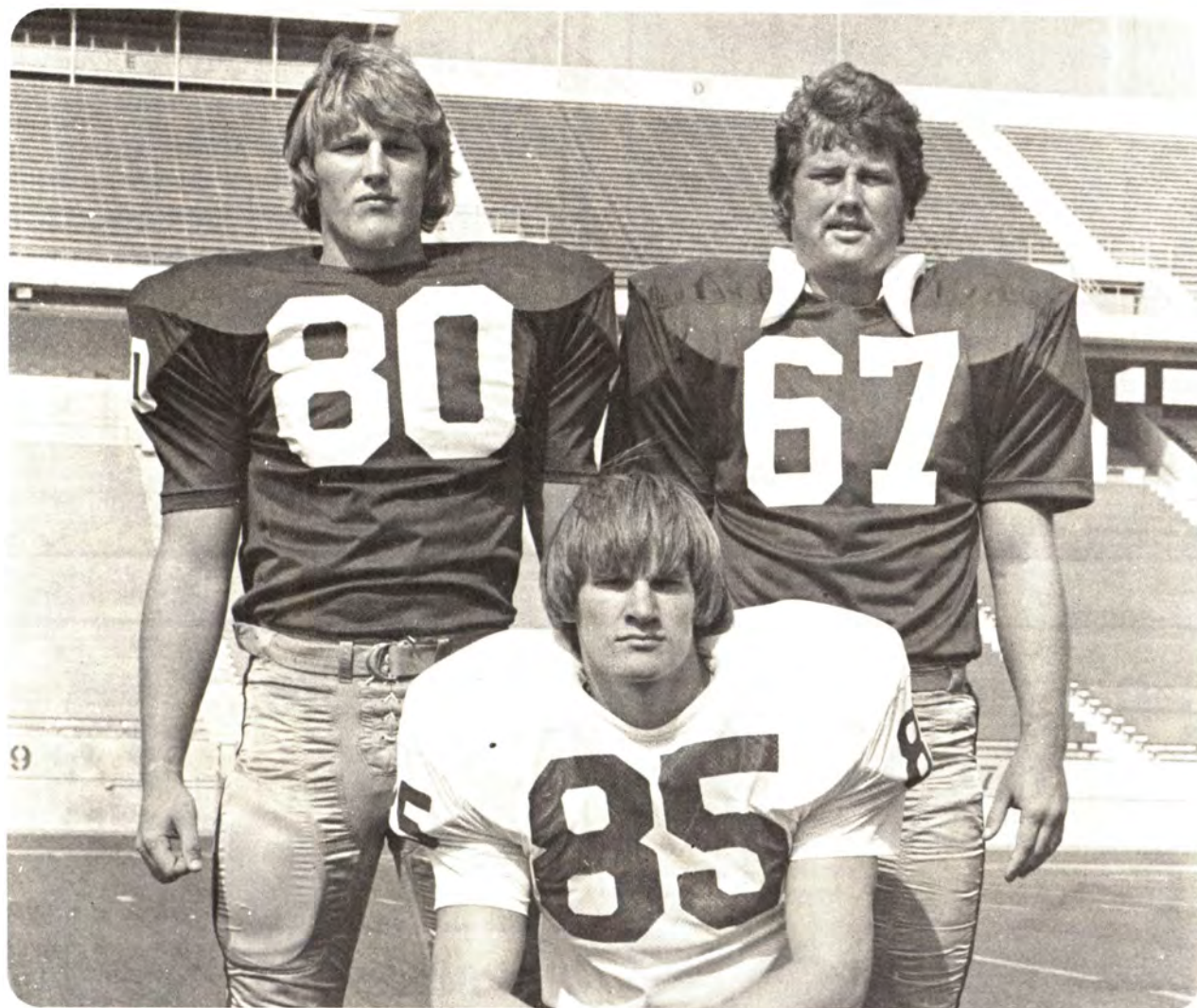


**Midland United Dairy Industry Association  
and the Iowa Dairy Industry Commission**

Pictured above: 67 DAVE GREENWOOD • 90 MAYNARD STENSURD • 18 WAYNE STANLEY • 14 TONY HAWKINS



# Cedar Rapids is proud to be a part of the Cyclone Team!



80- TERRY EARNEST • 85- JIM NISSEN • 67- DAVE GREENWOOD

*The following Cedar Rapids Boosters proudly support their  
three Cyclones from Cedar Rapids and the 1976 Cyclones:*

**King's Builder Material, Inc.**

**Iowa Manufacturing Company**

**Blahnik Construction Company**

**Russell H. Anthony, D.V.M.**

**The Cedar Rapids Gazette**

**Shive-Hattery and Associates**  
(Consulting Engineers)

**Divisions - Rockwell International**



## Thermo King Des Moines Co.



5100 East Broadway - Box 3266  
Des Moines, Iowa 50313  
(515) 262-9317

**Truck & Trailer Refrigeration**  
**24 Hour Service**



"Airline Tickets At Airport Prices."

### PERSONAL SERVICES

Air—Ship—Rail—Tours—Cruises  
Hotels—Car Rentals—Business Trips

**Free customer parking**



Telephone: 232-6640 • 104 Park Plaza, 6th & Duff

# Enjoy today's game even more... with the Nissen Team!

DISTRIBUTED BY



## CARRIAGE HOUSE

MEAT AND PROVISION COMPANY, INCORPORATED



PURVEYORS OF QUALITY  
MEAT AND PROVISIONS  
U.S. GOVT. INSPECTED

1131 DAYTON ROAD ■ AMES, IOWA 50010 ■ 232-2273



## IOWA STATE UNIVERSITY



### Department of Intercollegiate Athletics



**DAN ALFORD**  
Assistant Business Manager  
— Tickets



**MAL SCHMIDT**  
Executive Director  
Cyclone Club



**JIM OVERTURF**  
Business Manager



**IRV CHRISTENSEN**  
Assistant Business Manager  
— Accounting



**GARY ELLIS**  
Assistant Director  
Cyclone Club



### ATHLETIC COUNCIL

Control of the conduct of the Iowa State intercollegiate athletic program is vested in the Athletic Council, a board comprised of faculty, alumni, and students.

The 1976-1977 council includes the following:

Faculty—Tracy Clark, Hal Cowles, Ross Engel, Gene Futrell (recording secretary), Roy Keller, Rolland Knight (chairman), John Mahlstede (faculty representative to the Big Eight), Bert Nordlie, Dahlia Stockdale.

Alumni—Ray Hagie, Clarion; Ralph Olsen, Ellsworth; Gary Thompson, Ames (vice-chairman).

Students—John Arends, LaGrange, Ill.; Don Morris, Lancaster, Pa.; Denise Sofranko, Lovilia.

In Addition, Lou McCullough, director of athletics, is an associate member, and the university treasurer is an ex-officio member.

In addition, Lou McCullough, director of athletics, is an associate member, and the university treasurer is an ex-officio member.



**HARRY BURRELL**  
Sports Information Director



**ROD WILLIAMSON**  
Assistant Sports Information  
Director



# Wendy's

OLD FASHIONED  
HAMBURGERS



Present this AD on Game Days for  
one FREE Single with the purchase  
of one hamburger of any size.

Wendy's will present a Scholarship Award of \$100.00  
to the ISU Alumni Achievement Fund in the name of the  
Outstanding Player for each home game. Selection  
will be made by the Cyclone Coaching Staff.

327 Lincoln Way • Ames, Iowa

## Outstanding Player for Drake Game

**RON McFARLAND**  
Senior - Defensive Tackle



- ★ Four quarterback sacks for minus 30 yards
- ★ One deflected pass on fourth down play
- ★ Six unassisted tackles
- ★ One assisted tackle

Wendy's will present a Scholarship Award of \$100  
to the ISU Alumni Achievement Fund to honor  
McFarland.



There's no substitute for quality in athletic equipment as well as in  
players and coaches. We're proud to supply part of the equipment  
used by the Iowa State Cyclones.

In stock for all seasons, 53 models of adidas shoes, for football,  
soccer, basketball, track, tennis and baseball.

### WE SUPPLY ALL SPORTS IN ALL SEASONS

JOHN SULLIVAN  
GEORGE TURNER  
VIC YOUNG

SALESMEN  
DAN ROURKE  
STEVE BOBENHOUSE  
KENT ANDERSON  
VIC OLSON  
RON JESSEN



adidas	Cramer	Bike	Coane
Holloway	MacGregor	Spalding	
Wilson	Riddell	Russell-Southern	
Sand-Knit	Converse	American-Athletic	

**Vic Young**  
SPORTING GOODS INC.

415 NINTH ST. DES MOINES, IOWA 50309  
(515) 243-1245



Our experienced  
travel consultants  
can arrange foreign  
or domestic tours,  
transportation, and  
accommodations perfect  
for your travel plans  
—at no extra cost to you!

## WORLD WIDE travel center, inc



103 WELCH  
CAMPUSTOWN  
AMES

Des Moines Phone: 292-3632 Ames Phone: 292-8182



Member of ASTA

North Grand  
Phone: 292-1247

Dean and Josephine Knudson—Owners



# TOUCHDOWN!



Colonel Sanders Kentucky Fried Chicken is a sure winner every time . . . with everyone. Best reason we can think of for you to visit one of the two convenient Kentucky Fried Chicken locations in Ames. Stop by after the game and sample Colonel Sanders winning recipe!

"FINGER LICKIN' GOOD"

## Kentucky Fried Chicken



Visit our Colonels at these locations

### Two Ames locations -

### Kentucky Fried Chicken®

**509 Lincoln Way**

**North Grand  
Shopping Center**

**and...**

**Atlantic  
Iowa**

7th & Chestnut

**Boone  
Iowa**

Mamie Eisenhower  
& Division Street

**Okoboji  
Iowa**

By the lake on Hwy. 71

*"America loves what the Colonel cooks!"*



# Once again, TV service technicians give these opinions about Zenith:



We're proud of our record of building dependable quality products. But if it should ever happen that a Zenith product doesn't live up to your expectations—or if you want details of the service technicians' survey—write to the Vice President, Consumer Affairs, Zenith Radio Corporation, 1900 N. Austin Avenue, Chicago, Illinois 60639.

The Panorama IV. Sophisticated 25" diagonal console. A rich blend of soft Silver coloring and simulated Rosewood cabinetry. Model SH2541X. Simulated TV picture.

## I. Best Picture.

Again this year, in a nationwide survey of the opinions of independent TV service technicians, Zenith was selected, more than any other brand, as the color TV with the best picture.

**Question:** In general, of all the color TV brands you are familiar with, which one would you say has the best overall picture?

**Answers:**

<b>Zenith</b> .....	<b>34%</b>
Brand A .....	21%
Brand B .....	12%
Brand C .....	8%
Brand D .....	7%
Brand E .....	4%
Brand F .....	2%
Brand G .....	2%
Brand H .....	2%
Other Brands .....	2%
About Equal .....	10%
Don't Know .....	4%

Note: Answers total over 100% due to multiple responses.

## II. Fewest Repairs.

In the same opinion survey, the service technicians selected Zenith as the color TV needing the fewest repairs.

**Question:** In general, of all the color TV brands you are familiar with, which one would you say requires the fewest repairs?

**Answers:**

<b>Zenith</b> .....	<b>38%</b>
Brand A .....	18%
Brand D .....	9%
Brand B .....	6%
Brand C .....	5%
Brand E .....	3%
Brand F .....	2%
Brand G .....	2%
Brand H .....	2%
Other Brands .....	2%
About Equal .....	11%
Don't Know .....	10%

**ZENITH** 100% SOLID-STATE  
**CHROMACOLOR II**  
 The quality goes in before the name goes on.