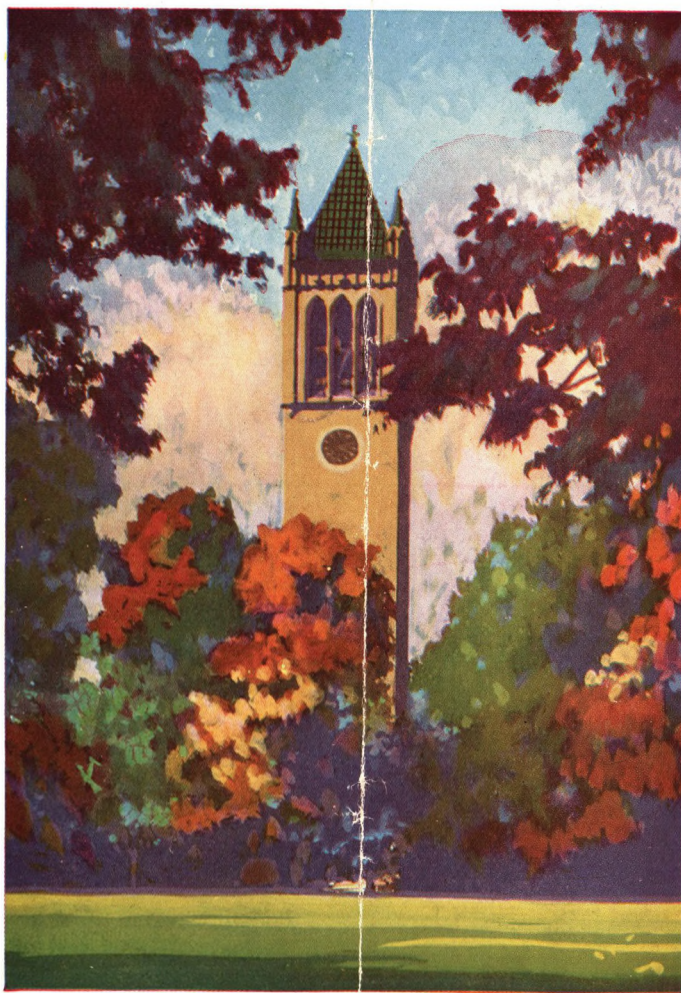


OFFICIAL FOOTBALL PROGRAM



"The Campanile is Calling"

AMES vs. NEBRASKA WESLYAN

STATE FIELD

SEPTEMBER 27, 1924

A. T. LERDALL

College Properties

LANDS

Choice College Bungalows and Ideal Home Sites

AT VERY ATTRACTIVE PRICES



2410 LINCOLN WAY

AMES, IOWA

Phone 395

LET THE.... CRANFORD

CLEANING and PRESSING SHOP

KEEP YOU UP IN STYLE

Special Attention Given Women's Garments

WORK CALLED FOR AND DELIVERED

MODERATE RATES

CRANFORD

CLEANING and PRESSING SHOP

Phone 820 :: Cranford Apartments

"We'll Keep Your Clothes Looking Neat"

“Girls, you can see all the ‘Ames’ feature before closing time.”

Official Athletic Program Iowa State College

Sept. 27, 1924

Ames vs. Nebraska Wesleyan

Authorized by the Athletic Department

Publishers, McKinley and Longstreet

Contributors, T. N. Metcalf, Director of Athletics,
H. E. Greenwood

SAVE TIME! TRAVEL BY BUS!!

Ten-Minute Service from College to Town

Courteous Service

We Make Party Drives Our Specialty

Buy Traveling Checks Twenty-five for \$1.00

Phone 1378-W

HUTCHISON BUS LINE

Folks—Remember “The Covered Wagon” is all next week.

It only takes a few minutes to get to the "Princess."

Linder Shoe Repair Shop

Why we are the Students' Choice

Materials—

Highest Grade leather

Fleckenstein's "Flexoak" leather especially for women's shoes

Goodyear heels

Workmanship—

Expert Shoe Doctors

Service—

The place of individual attention

J. W. Linder

2512 Lincoln Way

Eat what you like at

The BLUE INN

Delicious American Home-Cooked Foods

SANDWICHES—SALADS—DAINTIES

Two doors east of the Ames Theatre

Campustown

"Home's Only Rival"

Get your

Boudoir Articles—Jewelry—Stationery

Whitman's Candies and College Ice Cream

CHAMPLIN'S DRUG STORE

Whenever you look for a sizzling western think—"Twin Star."

Cecil B. DeMille's latest production—"Feet of Clay," starts a four-day run here Oct. 8th.

ALUMNI AND FRIENDS OF IOWA STATE COLLEGE

Your football team faces one of the hardest schedules in the history of Iowa State College. It will play eight stiff games, five of them away from home.

The team needs your fullest support. Go to the two remaining home games; make the trips with the team if you can; and if you can't make the trips watch those games on the Gridgraph at the Gymnasium.

Home Games

September 27, Nebraska Wesleyan
October 18, Missouri
November 22, Drake

Gridgraph Games

October 4, Wisconsin
October 11, Kansas Univ.
November 1, Kansas State
November 8, Minnesota
November 15, Grinnell

RESERVATIONS

Practically all seats will be reserved for the Missouri and Drake games, a reserved seat admission selling for \$2.50. Holders of season tickets may secure reserved seats for 50 cents, by mailing in their coupons with their order. Reservations will be made entirely by mail. All mail orders received two weeks in advance of the games will be filled in the order in which they are drawn by lot. Orders coming in later will be filled in the order in which they are received. Those received up to within one week of the game will be mailed out. Those received less than one week before the game will be held subject to call.

Special sections will be reserved for "A" men, for men rooters, women rooters, for supporters of the visiting teams, and perhaps for other groups which make early application.

No more than six seats will be sold to an individual. If more than this number wish adjoining seats they should mail their orders in the same envelope.

Envelopes may be obtained at my office upon request. If ordering for both games, kindly use separate checks. No order will be accepted and filled unless accompanied by the money. Always include the price of the tickets and TWELVE CENTS to cover registering and mailing.

Buy a Season Ticket for \$4.00 and Save \$3.50

"Boost and back the team for a successful season"

T. N. METCALF,
Director of Athletics.

Princess Theatre Matinee Daily with Orchestra.

Have you heard the "Ames" enlarged orchestra?

Make the
Cranford Coffee Shop

Your place of meeting.

Breakfasts Lunches Dinners

Fancy Sundaes Toasted Sandwiches Malted Milk

The Best Home-Cooked Food at Popular Prices.

We are making a specialty of breakfasts, 15c up. Try us.

2408 Lincoln Way

Phone 1545-W

Private room for Banquets.

Business hours: 7 a. m.-8 p. m

Week-ends—Night Service

After the Game

O'Neil's Velvet Ice Cream will be waiting for you at the best fountains in Ames. Ask for it and be assured of the very best in Ice Cream. Any special order for your dinner or party will be skillfully made and delivered to you promptly. Always call 62 when in need of information about Ice Cream and Sherbets.

O'NEIL DAIRY CO.

Folks—Remember "The Covered Wagon" is all next week.

"Girls, you can see all the 'Ames' feature before closing hour."



Cheer Leaders

N. K. Clemmensen

C. T. Cownie

L. R. Boyd

Locomotive

A-M-E-S, Rah! Rah! Rah! Rah!

A-M-E-S, Rah! Rah! Rah! Rah!

A-M-E-S, Rah! Rah! Rah! Rah!

AMES! AMES! AMES!

A-M-E-S, Rah! Rah!

A-M-E-S, Rah! Rah!

Who Rah! Who Ray!

State College, Ioway.

Hit 'em hard

Hit 'em low

Fight! Ames, Fight!

Go Gang Go.



Princess Theatre Matinee Daily with Orchestra.

Good, hearty laughter is a Paramount part of Every Program at the "Princess" and "Ames" Theatres.

LETTER MEN

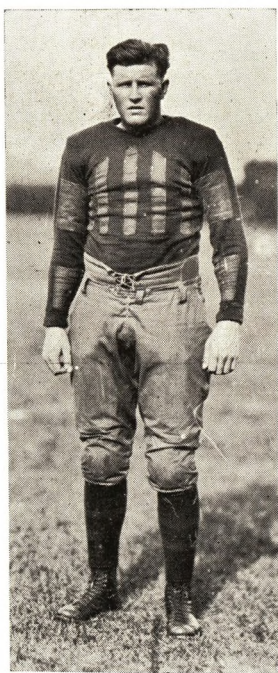
C
Y
C
L
O
N
E
S



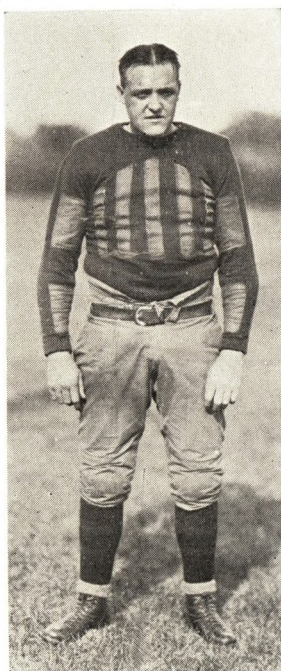
C. WINGERT



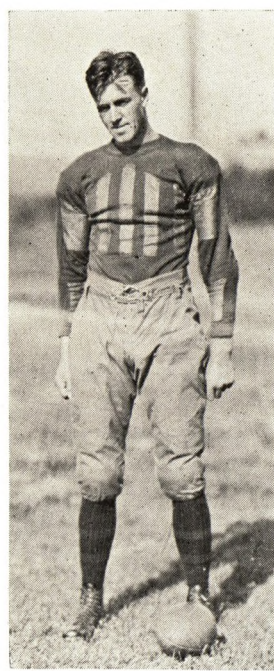
G. ROBERTS



WM. ANDERSON



CAPT. H. SCHMIDT



R. W. LONGSTREET

To hear that "Popular Princess Theatre Orchestra" is a real treat—No Foolin'.

Cecil B. DeMille's latest production—"Feet of Clay," starts a four-day run here Oct. 8th.

FIGHTERS

C
Y
C
L
O
N
E
S



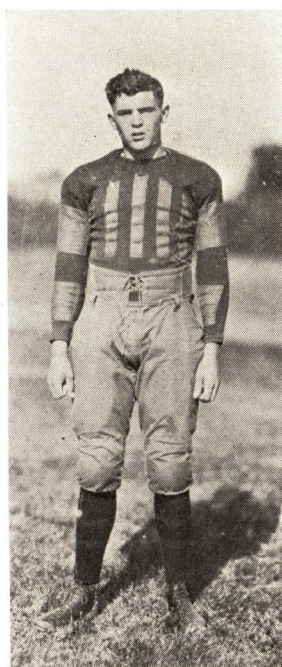
J. BEHM



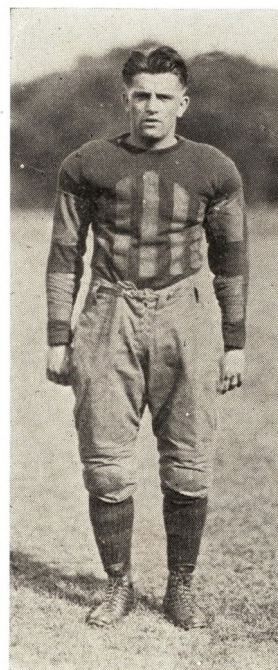
N. BEHM



A. THORNBURG



MAYER



W. NAVE

Of course your friends would like to go to the "Ames Theatre"—just try it.

Folks—Remember “The Covered Wagon” is all next week.

SHELDON - MUNN

E

The Nebraska Wesleyan Team

X

P

E

R

T

1. Gembler (Capt.), Halfback
2. Alabaster, Quarterback
3. Harrington, Halfback
4. Roper, Halfback
5. Raitt, Left Tackle
6. Donahoe, Right Tackle
7. Hurlbut, Left End
8. Saunders, Left Guard
9. Huyck, Center
10. Clark, Halfback
11. Danker, Halfback
12. Calvert, Right End
13. Fruhling, Guard
14. Hatten, Center
15. Wiberg, Fullback
16. Boell, Right Guard
17. Gentry, Tackle
18. Neal, End
19. Weld, Halfback

Probable Start

	L.E. 180 Hurlbut 7
Q.B. 150 Alabaster 2	L.T. 185 Raitt 5
L.H. 172 Danker 11	L.G. 165 Boell 16
R.H. 160 Capt. Gembler 1	C. 180 Huyck 9
F.B. 191 Wiberg 15	R.G. 165 Saunders 8
	R.T. 190 Donahoe 6
	R. E. 171 Calvert 12

	1st Quarter	2nd Quarter	3rd Quarter	4th Quarter
Ames				23
Nebraska Wesleyan				13

“THE SHOP OF COURTESY”

Drop in at the “Ames Theatre”—any evening—Just around the corner.

500 real "Joy Spots" at the Princess Theatre.

BARBER SHOP

The Ames Team

g Line-ups

R.E.

Nave, Shawhan, Vifquain, E. Anderson.

R.T.

Mayer, Brockmeyer, Tawzer.

R.G.

Thornburg, Rasmess, Tawzer.

C.

Longstreet, Powek, Sulzbach.

L.G.

Capt. Schmidt, Larson, Heinton.

L.T.

W. Anderson, Galbreath.

L.E.

Symonds, Bond, Weiner, Grimes, Walling.

Q.B.

J. Behm, Greenlee, Hill.

H.B.

Roberts, Owen, Sage.

H.B.

N. Behm, Fisher, Woodhull.

F.B.

Palm, Hill, Coe, Wingert, Bondor.

- | | |
|----------------------|--------------------|
| 1. Schmidt, Harry | 31. Behm, N. |
| 2. Behm, Johnny | 33. Palm, C. H. |
| 3. Roberts, G. | 34. Rasmess, J. |
| 4. Anderson, Wm. | 35. Longstreet, R. |
| 5. Malone, R. | 36. Owen, H. |
| 6. Thomas, N. | 37. Tawzer, F. L. |
| 7. Mayer, F. | 38. Vifquain, M. |
| 8. Shawhan, R. | 39. Grimes, L. W. |
| 9. Greenlee, F. W. | 40. Weimer, E. |
| 10. Walling, R. C. | 41. Nave, Wm. L. |
| 11. Greenlee, R. C. | 42. Fisher, R. J. |
| 12. Wingert, C. | 43. Thornburg, A. |
| 13. Prunty, R. A. | 44. Hill, Ed |
| 14. Sulzbach, W. | 45. Zellers, W. W. |
| 15. Easley, E. | 46. Hienton, R. |
| 16. Graham, Wm. | 47. Coe, R. |
| 17. Symonds, N. | 48. Burt, A. C. |
| 20. Berger, W. | 49. Petty, Phil |
| 21. Wheeler, C. M. | 50. Storvick, R. |
| 22. Reighard, R. | 51. Brockmeyer, G. |
| 23. Larson, E. | 52. Powek |
| 25. Galbraith, R. H. | 60. Bondor, F. M. |
| 26. Anderson, E. J. | 61. Chesneau, D. |
| 28. Bond, C. | 62. Konecky, P. |
| 30. Sage, E. | 63. Woodhull |

Referee.....I. T. Carrithers

UmpireE. W. Cochrane

Headlinesman.....C. E. Elliott

S
E
R
V
I
C
E

"CURLY" McNABB, PROP.

"The Ames Theatre" was completely refinished—Everything New.

Have you heard the "Ames'" enlarged orchestra?

NEBRASKA WESLEYAN

COACH GLEN PRESTON

Preston is the product of Coach Dawson of the University of Nebraska. He played quarterback on the Nebraska football team in '21 and '22. The Wesleyan coach was named on the Missouri Valley All-Star team and on the Outlook's Roll of Honor both years.



ASSISTANT COACH PETERSON

Peterson is assistant coach and has charge of the line. He was a teammate of Preston's at the University of Nebraska in '21 and '22, playing center. Peterson was selected as pivot man on Walter Camp's All-American third eleven.



RALPH HURLBUT
L.E., Wt. 180



EARL RAITT
L.T., Wt. 185

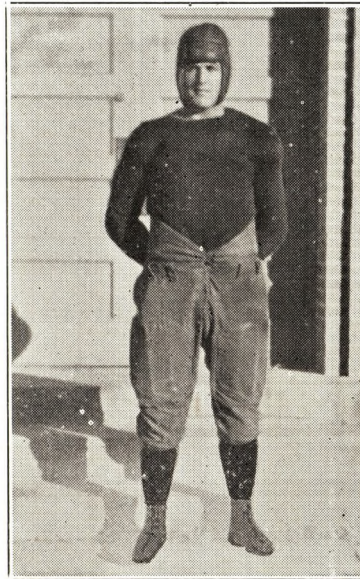
Whenever you look for a sizzling western, think—"Twin Star."

Girls—The feature at the "Ames" theatre starts at 7:00, first days of the week.

NEBRASKA WESLEYAN



GEMBLER
Captain



DON HARRINGTON
HB., Wt. 160



FRANCIS ALABASTER
Quarterback, Wt. 150



DONAHOE
Tackle, Wt. 190

Always four subjects every program at the Princess and "Ames."

The "Twin Star" has a Matinee every Saturday.

You Get Quality Service!
at the
Bobbette Beauty Shoppe

For Men, Women and Children
Specialists in Facial and Scalp Treatments
Hair Bobbing and Marcelling
Marinello Creams, Lotions and Perfumes

Phone 227

Located on the corner where the busses stop downtown
P. S.—Don't forget we use Nestle Permanent Wave Machine

Pastuerized and Raw Milk—Nine Quarts for One Dollar

Ames Milk Producers Ass'n

MILK AND CREAM

Eighty Producers Centralized

SATISFACTION GUARANTEED

WHOLESALE
Single Gal., 35c
3 or more Gal., 30c

Phone 369
Ames, Iowa

"The Enemy Sex" starts here Oct. 1st—four days.



"THE TWISTERS"

The "Twisters," an organization for fostering pep and interest in athletic events, was organized in the Spring quarter, 1924. It is composed of 38 men, one from each fraternity and two representatives of the non-fraternity group.

In addition to promoting pep at Iowa State, the Twisters stand pledged to build and support the traditions of our school.

They accompany athletic teams on trips and give the oft-needed support which would otherwise be lacking.

The Twisters put on stunts of various kinds and their snappy uniforms add an effective touch. Slip-over sweaters of cardinal, with gold stripes at the neck with white flannels, striped cardinal and gold, make the group look like a part of old Iowa State.

They are ever on the job looking for new material for teams and see that freshmen get out into athletics. We need just such a group to take care of this particular phase.

The Twisters are a part of Ames. They are always on the job at all-college events and are the organization that is always ready to step up and take care of work that requires good, quick action.

Watch for the fellow in cardinal and gold and make any suggestions you may have to any of them, for the betterment of Iowa State's athletics or traditions.

This group is not supposed to do the yelling for the crowd; they are there to assist the cheerleaders. Cooperate with them in backing our teams, for the assistance of everyone is needed to make good athletics possible.

The "Twin Star" has a Matinee every Saturday.

Of course your friends would like to go to the "Ames Theatre"—just try it.

Jameson's

The Clothing Store of

Quality

Nothing but standard young men's clothing unconditionally guaranteed to give satisfactory wear.

The Home of Hart Schaffner & Marx Clothes

Hurry!

All the hungry go to the

College Inn
Cafeteria



Y. M. C. A. Building, Campus

We serve the very best of foods at the
lowest possible prices.

Get a Meal Book and eat here regularly.

500 real "Joy Spots" at the Princess Theatre.



FRESHMEN vs. SOPHOMORES
This year's winner.....*Sophomores*.....

Attention

Fraternities and Sororities

EVERYTHING IN BAKED GOODS

Melburg Bake Shop

Phone 178

Always four subjects every program at the "Princess" and "Ames."

"The Enemy Sex" starts here Oct. 1st—Four days.

Chic, Jay and Mac
will please you at the
College Barber Shop

Master Service—Sanitary

Hairbobbing Specialists

AMES THEATRE BUILDING

"We will keep your hair in style"

Our Fees will Satisfy You

La Verne Beauty Shop

MRS. TOM GEATAGANAS, Proprietor

Phone 307

Marcel
Water Waving
Facial and Scalp Treatments
Shampooing

AMES, IOWA

It only takes a few minutes to get to the "Princess."

ARTIST CONCERT SERIES

IOWA STATE COLLEGE

SEASON 1924-1925

San Carlo Grand Opera Co. Tamaki Miura

IN THE OPERA

"MADAM BUTTERFLY"

November 28, 1924

FIRST NUMBER



TITO SCHIPA

TITO SCHIPA — Premier Tenor in
Recital. October 31, 1924.

ALBERT SPAULDING — American
Violinist. January 23, 1925.

ANNA CASE — America's Favorite
Soprano. March 20, 1925.

IOWA STATE SYMPHONY OR-
CHESTRA—Oscar Hatch Hawley,
Conductor; Evelyn Teander, Twelve
Year Old Pianist, Soloist. February
20, 1925.

SUBSCRIBERS

ONE WEEK WILL BE GIVEN SUBSCRIBERS TO GET RESERVATIONS
BEFORE GENERAL SALE. ALL RESERVATIONS WILL BE MADE BY
MAIL AND SUBSCRIBERS' ORDERS WILL BE GIVEN PREFERENCE

Season Tickets are \$2.50, \$3.00, \$4.00, \$5.00 Each.

These Prices will Save a Little More
Than 50% of Single Seat Prices

Call Music Hall (No. 150) and Leave Your Name for the Subscription Lists

ADDRESS INQUIRIES TO

TOLBERT MACRAE, AMES, IOWA



Pictures Are Year Round Gifts

Someone is always having a birthday or getting married, or inspiring gifts in one way or another. *Give Pictures* for they are sure to be appreciated. The value of such a remembrance lies not in its cost but in its lasting beauty

AMES ART SHOP

(Ames' Exclusive Art Dealer)

ON MAIN STREET

