

OFFICIAL PROGRAM • TWENTY-FIVE CENTS

(Homecoming)

Iowa State Colorado

CLYDE WILLIAMS FIELD - AMES, IOWA - OCT. 18, 1952

DOROTHY COLLINS,
"The Sweetheart of Lucky Strike,"
says:

Be Happy-
GO LUCKY!

**LUCKIES
TASTE
BETTER!**



L.S./M.F.T.-Lucky Strike Means Fine Tobacco

COPR., THE AMERICAN TOBACCO COMPANY



DR. CHARLES E. FRILEY
President
Iowa State College

Greetings From The President

The students and faculty join me in extending a cordial welcome to all of you who are here for the 1952 Homecoming events. If you have not been on the campus recently you will find many changes, especially in the expansion of the physical plant.

Nearly 7800 students have enrolled at the Iowa State College this fall. They come from every county in Iowa, every state in the Union, and from more than 50 foreign countries. Of this number, 2100 are freshmen; one of the largest entering classes of recent years. The total enrollment of 7800 represents an increase over the 1951 fall enrollment of 7500 students.

The educational program of the College has undergone a number of important changes. The program of resident teaching has been broadened and strengthened and made more flexible. There has been a significant expansion of the research program and the program of graduate education. The extension and adult education activities of the College now reach every part of the State. All these developments are a reflection of the increasing demands of the state and nation on the educational resources of the College.

The feature attraction today is the football game between the University of Colorado and the Iowa State College. The teams are well matched and we believe you will find it an interesting contest.

Please feel free to visit any of the College activities in which you may be interested; and also give us the opportunity of getting better acquainted with you during the day.

Sincerely yours,

Charles E. Friley
President

ALLEN MOTOR CO.

Chevrolet - Buick

SALES - SERVICE

5th and Douglas

AMES, IOWA

TROJAN

Athletic Knitwear is tops

*More Iowa Colleges Wear Trojan Honor Sweaters
Than any other Brand*

Ask to see Samples

Distributed in Iowa by

Vic Young Sporting Goods

DES MOINES

BEST TEAMS IN COUNTRY

BUY YOUR TICKETS TODAY

IOWA STATE

GAMES AT HOME

Sept. 20	South Dakota State	\$3.00
Oct. 11	Kansas	3.50
Oct. 18	Colorado	3.50
	(Homecoming)	
Nov. 1	Oklahoma	3.50
Nov. 8	Drake (Parents Day)	3.50

GAMES AWAY

Sept. 27	Illinois	3.60
Oct. 4	Nebraska	3.50
Oct. 25	Missouri	3.60
Nov. 22	Kansas State	3.50

PLAY AT IOWA STATE

OFFICIAL WATCH FOR THIS GAME



Longines



The World's Most Honored Watch

ACCEPTED AS OFFICIAL WATCH
FOR TIMING
CHAMPIONSHIP SPORTS EVENTS
IN ALL FIELDS ALL OVER THE WORLD

*Product of
Longines-Wittnauer Watch Company*



Cyclones Meet Buffs



DAL WARD
Colorado Coach

Homecoming—the fortieth since the first one in 1912—brings together Colorado and Iowa State for the second time in the series and for the seventh time in history.

The contest today is the rubber game, each team has won three of the contests. Colorado won in 1946, 13-7; in 1947, 7-0; and in 1951, 47-20. Cyclone victories were in 1948, 18-7; 1949, 13-6; and 1950, 14-7.

Today the Golden Horde from Boulder comes into the game with a record of two wins, a single loss and a tie. The wins were over San Jose State and Arizona, the loss was to Kansas, and the tie with Oklahoma.

Iowa State opened its 1952 season with a 57-19 win over South Dakota State and followed with three losses: 7-33 to Illinois; 0-16 to Nebraska and 0-43 to Kansas.

Against the only common foe the record shows a 12-21 loss to Kansas for Colorado as compared to the 0-43 game here with the Jayhawkers last week.

Colorado will be one of the two teams playing here this year who use the single wing offense. Blessed with great speed and power, the Buffs use the Bierman-Minnesota offense as adapted by Dal Ward of Colorado. King pin of the 1952 offense is Zack Jordan. Jordan, one of the greatest quick kick artists in the nation, is also the top ball carrier and one of the best passers on the club. Other ball carrying stars are Woody Shelton, tiny little speedster; Carroll Hardy, rated as the greatest athlete at Colorado since the days of the original Whizzer White; Ralph Curtis, a fullback who has made Buff fans forget all about Merwyn Hodel.

Defensively some of the names you'll hear this afternoon are Don Branby, end; Don Greenwood, who plays almost any place; Tom Brookshier, defensive halfback, and Royal Shepherd, who plays line backer or in the line on defense.

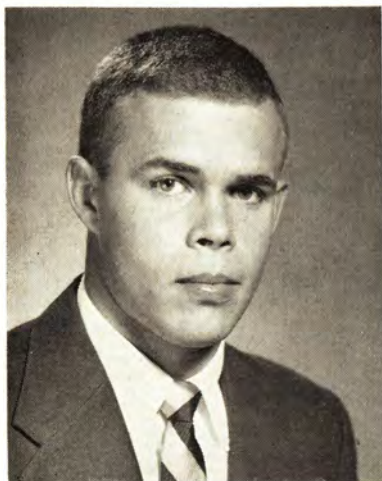
Iowa State hopes to be on the rebound from the defeat by Kansas last week but will still not be at top physical peak. It is not likely that Lee Spence nor Bill Plantan will be available while several others may not be in top shape and as a result will see little service.

AFTER-GAME GET-TOGETHER

Immediately following the conclusion of today's homecoming game there will be a special get-together for alumni, guests and friends of the college in the gymnasium. Each division of the college will be represented and will serve as hosts for the occasion. The Alumni Association will serve free coffee and donuts.

"The Official Watch for Timing This Game is Longines—The World's Most Honored Watch"

-- C Y C L O N E S --



KIM TIDD
Marshalltown
Leonard Cole
Industrial Economics



BO WALKER
Ottumwa
Don Newell
Industrial Economics



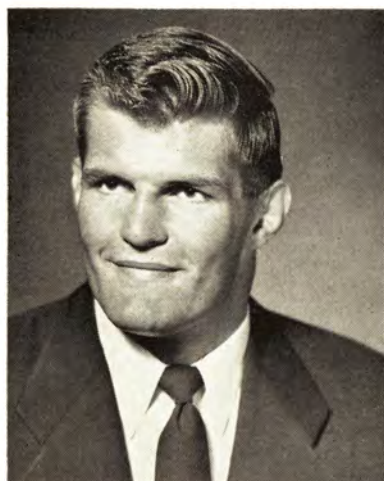
WELDON THALACKER
Ottumwa
Don Newell
Mechanical Engineering



GEORGE ALLEMAN
Ankeny
Bert Evans - Merritt Parsons
Farm Operation



JIM MIELKUS
Lincoln, Ill.
Ed Migaliez
Industrial Education



JACK ERICKSON
St. Charles, Ill.
Rufus Dewitz
Industrial Economics



BILL PLANTAN
LaSalle, Ill.
A. J. Nowack
Science



CLOYCE PALMER
Keota
Senior Manager
Dairy Husbandry

CYCLONES SEEK 13th

Iowa State will be seeking its thirteenth win in the homecoming series which dates back to the fall of 1912. Just an even dozen times have the homecoming fans really celebrated with victories. On four occasions there have been ties while 23 times "there was no joy" in Ames.

Today's homecoming opponent from Colorado has taken part in one other such occasion, back in 1948 when the home forces took an 18-7 win. That was a big thriller, too. On the opening kickoff the ball was fumbled into the Cyclone end zone where Colorado fell on it for a 7-0 lead. But the Cyclones battled back on long runs and earned the win.

In addition to Colorado the only other clubs the Cyclones hold homecoming edges on are Kansas State and Drake. Like Colorado, Drake has appeared on the list but once before, dropping a 13-7 decision in 1926. Kansas State has yielded five of the 12 victories in the 40 games.

In 1918 there was no homecoming game since the nation lay gripped in the worst epidemic in history—flu—at that time.

The series started back in 1912 as a result of a lot of work by the deans of the different divisions of the college. Unfortunately it also set the pattern of wins and losses. Iowa scored a 20-7 win.

The Cyclones alternated between Iowa and Nebraska each year for a homecoming opponent through 1916. It wasn't a profitable arrangement from the Iowa State point of view. The Hawks and Cornhuskers took five straight wins.

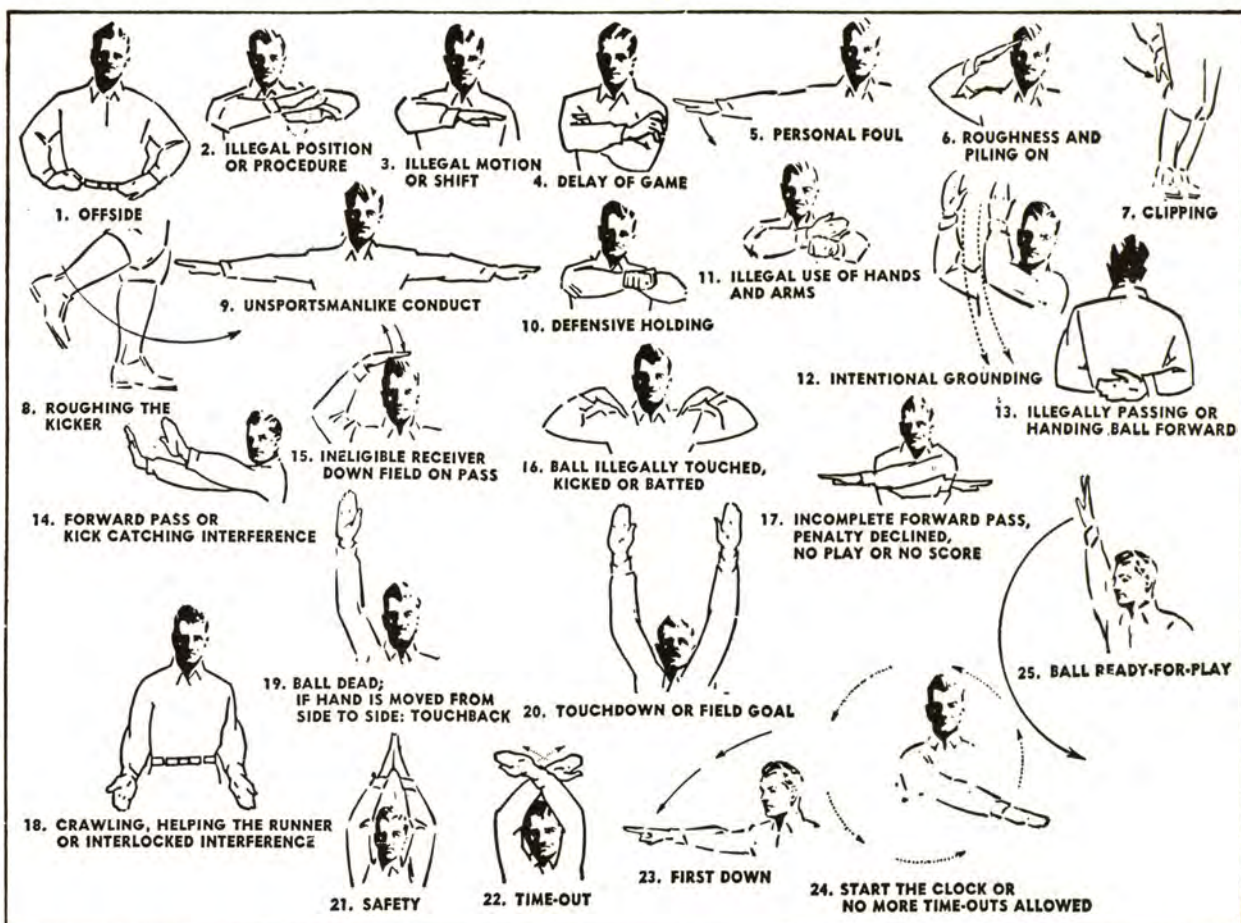
In 1917 the first victory came at the expense of Kansas State, 10-7. Since there was no game in 1918, the Wildcats were back as the homecoming foe the next time in 1919 and bowed by a 46-0 score.

Twice the Cyclones have gone four games in a row without losing. Ties are involved in each streak, however. From 1925 through 1929 the Cyclones tied Grinnell, 9-9; defeated Drake 13-7, Kansas State 12-7, and Oklahoma 13-0. From 1933 through 1936 the string read three ties and a win: Missouri 14-7, Kansas 0-0, Missouri 6-6, Oklahoma 7-7.

Over the years Kansas State has failed to win in five games; the others read as follows: Colorado has lost its only appearance as has Drake; Grinnell tied in its only game; Iowa State has stopped Missouri twice, tied the Tigers once, and lost seven times; Oklahoma has lost once, tied one, and won five times; Kansas has lost one, tied one, won three; Nebraska lost one, won four. Iowa won four.

Here are the results of the first 40 homecoming years:

1912— 7	Iowa 20	1925— 9	Grinnell 9	1939— 6	Missouri 21
1913— 9	Nebraska 18	1926—13	Drake 7	1940— 7	Oklahoma 20
1914— 6	Iowa 26	1927—12	Kansas State 7	1941—13	Missouri 39
1915— 0	Nebraska 21	1928—13	Oklahoma 0	1942— 7	Oklahoma 14
1916—16	Iowa 19	1929— 0	Kansas 33	1943— 7	Missouri 25
1917—10	Kansas State 7	1930—13	Oklahoma 39	1944— 7	Oklahoma 12
1918—No Game—Flu		1931—20	Missouri 0	1945—27	Nebraska 7
1919—46	Kansas State 0	1932— 0	Kansas 26	1946— 0	Oklahoma 63
1920—10	Iowa 14	1933—14	Missouri 7	1947— 7	Missouri 26
1921— 3	Nebraska 35	1934— 0	Kansas 0	1948—18	Colorado 7
1922— 3	Missouri 6	1935— 6	Missouri 6	1949—25	Kansas State 21
1923—14	Nebraska 26	1936— 7	Oklahoma 7	1950—21	Kansas 33
1924— 0	Missouri 7	1937— 0	Missouri 12	1951—32	Kansas State 6
		1938—21	Kansas 7		



IN SUPPORT of the CYCLONES

For 36 Years - Same Location
SOUTH OF CAMPUS

COLLEGE SAVINGS BANK

WEST AMES, IOWA

Total Resources over \$5,000,000

Depository, Iowa State College Athletic Council

Member F.D.I.C.

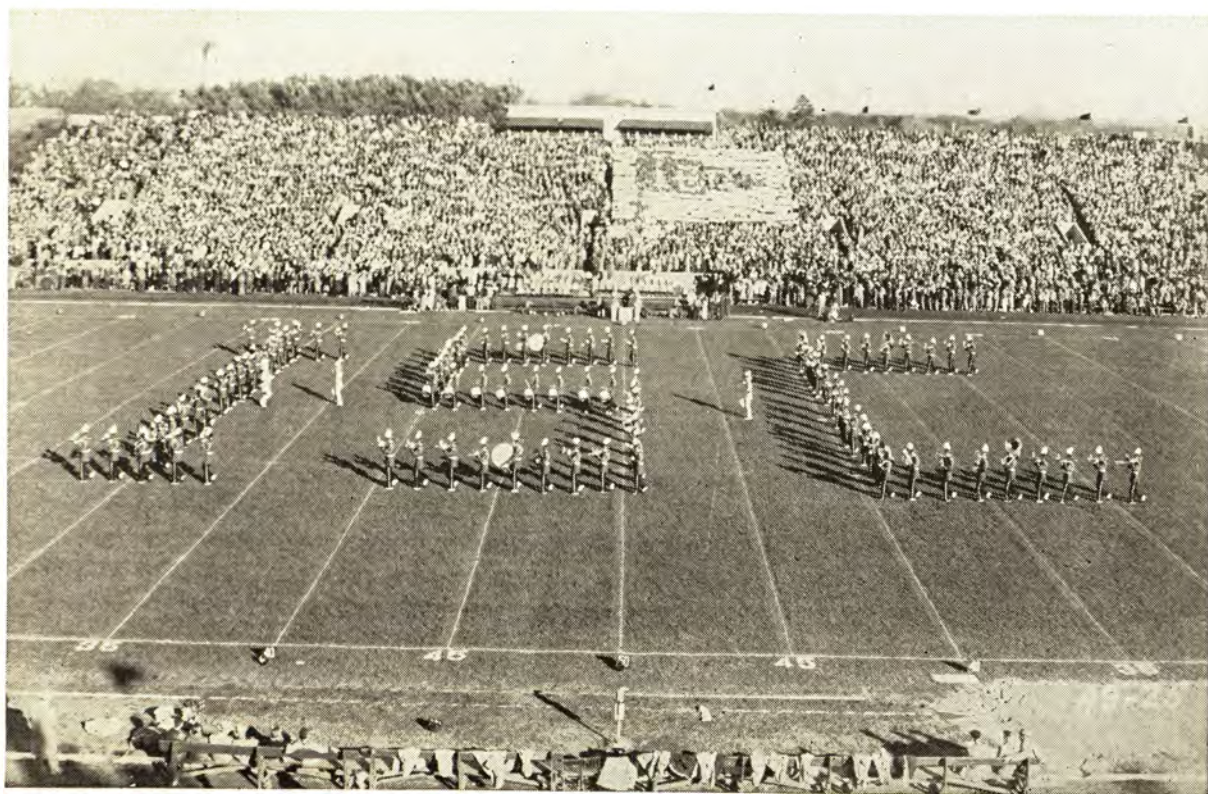
IOWA STATE MARCHING BAND

One of the four best in the nation — that's the rating of the crack Iowa State Marching Band. Directed by Frank Piersol, the Cyclone music makers continue to follow the high musical and marching standards set by Alvin Edgar, now head of the music department at the college. From the first day of school when in less than 72 hours a freshman band is whipped into shape, until the peak road trip, the band ably compliments the performances of the footballers on the field.



FRANK PIERSOL

Director



- CYCLONE STAFF -



LOUIS E. MENZE
ATHLETIC DIRECTOR



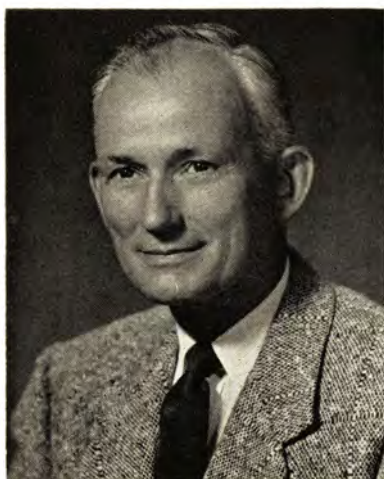
EMMETT R. STUBER
HEAD COACH



L. C. TIMM
BACKFIELD COACH



BURT MOORE
LINE COACH



HERB CORMACK
END COACH



BOB LAMSON
FRESHMAN COACH



BERYL TAYLOR
TRAINER

TELEVISION EDITORS SAY... "We choose Emerson for our personal use!"

They watch television 10 hours a day, day after day, all through the year. No wonder TV editors demand consistent performance, above everything else. No wonder they insist on the brand that does NOT compromise with quality—Emerson!



NICK KENNY,
TV Editor—
New York
Daily Mirror:
"I watch television day in and day out — and I agree that Emerson is best!"

BILL IRVIN,
Radio-TV Editor
Chicago
Sun Times:
"Emerson is my personal choice for clear pictures and high-fidelity sound!"



ROBERT HALL,
TV Editor—
San Francisco
Call-Bulletin:
"I use an Emerson 10 hours a day—and am delighted with its consistent performance!"



Emerson Television

Of the 5 leading brands: Emerson Leads the Field in Performance ... At the Lowest Price of All!



EMERSON 17-INCH MODEL 721—Illuminated channel selector for easy reading. New Emerson *side controls* make possible the largest picture in the most compact cabinet. One-knob *Simplimatic* tuning. Removable front bezel for cleaning picture tube and glass. *Fringe Compensator* adjusts for individual reception. Ready for UHF. Rich mahogany veneer cabinet.



EMERSON 21-INCH MODEL 711—Built-in antenna. One-knob *Simplimatic* tuning. Miracle picture lock. *Full-Screen Focus* and *Black-Magic Contrast* for bright, full-toned pictures. Front glass easily removed for cleaning picture tube face. Specially Engineered *Long-Distance* circuit. *Fringe Compensator* adjusts for individual reception conditions. Ready for UHF. Mahogany veneer cabinet.



EMERSON 17-INCH TV-PHONORADIO - CLOCK CONSOLE MODEL 731—Largest TV picture in the most compact cabinet made possible by new Emerson *side controls*. One-knob *Simplimatic* tuning. Ready for UHF. Powerful AC-DC super-heterodyne radio. Automatic 3-speed record changer. *Self-starting electric clock* operates continuously and independently. Mahogany veneer cabinet.



*Reg. U. S. Pat. Off.



EMERSON 17-INCH MODEL 716—Exceptionally compact modern table cabinet of selected mahogany veneers with front glass removable for cleaning picture tube face. *Fringe Compensator* adjusts for your reception conditions. Built-in antenna. One-knob *Simplimatic* tuning. *Full-Screen Focus* and *Black-Magic Contrast* for bright, full-toned pictures. Ready for UHF.

EMERSON—Over 13,000,000 Satisfied Owners

HAWKEYE SALES CO.

Distributor

1220 Grand Avenue

Des Moines 9, Iowa

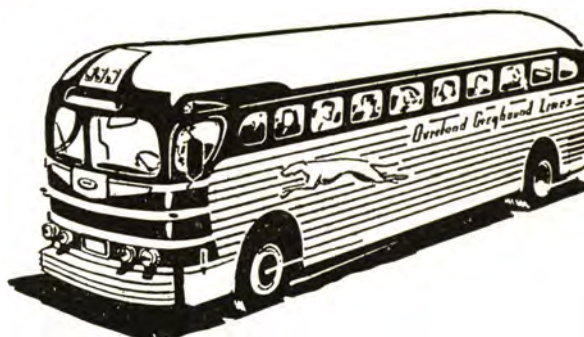


Go Greyhound

- ★ TO FOOTBALL GAMES
- ★ FOR VISITS HOME
- ★ ON CHARTERED TOURS
- ★ ON SHOPPING TRIPS

CHARTER A GREYHOUND!

Keep the gang together! You'll enjoy every trip a lot more if you go and return by Greyhound. Play games, sing, chat . . . stop only when you choose. Arrange your own schedule—the rates are amazingly low. Ask for details about charter trips.



SEE YOUR LOCAL GREYHOUND AGENT TODAY!

Sewer, Water, Electric and Gas Distribution Systems

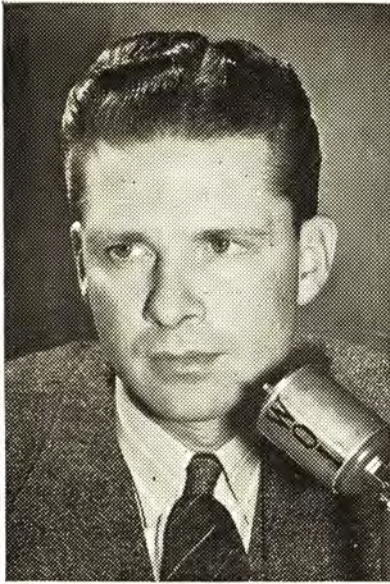
Hoak Construction Company

621 63rd Street

PHONE 5-8881

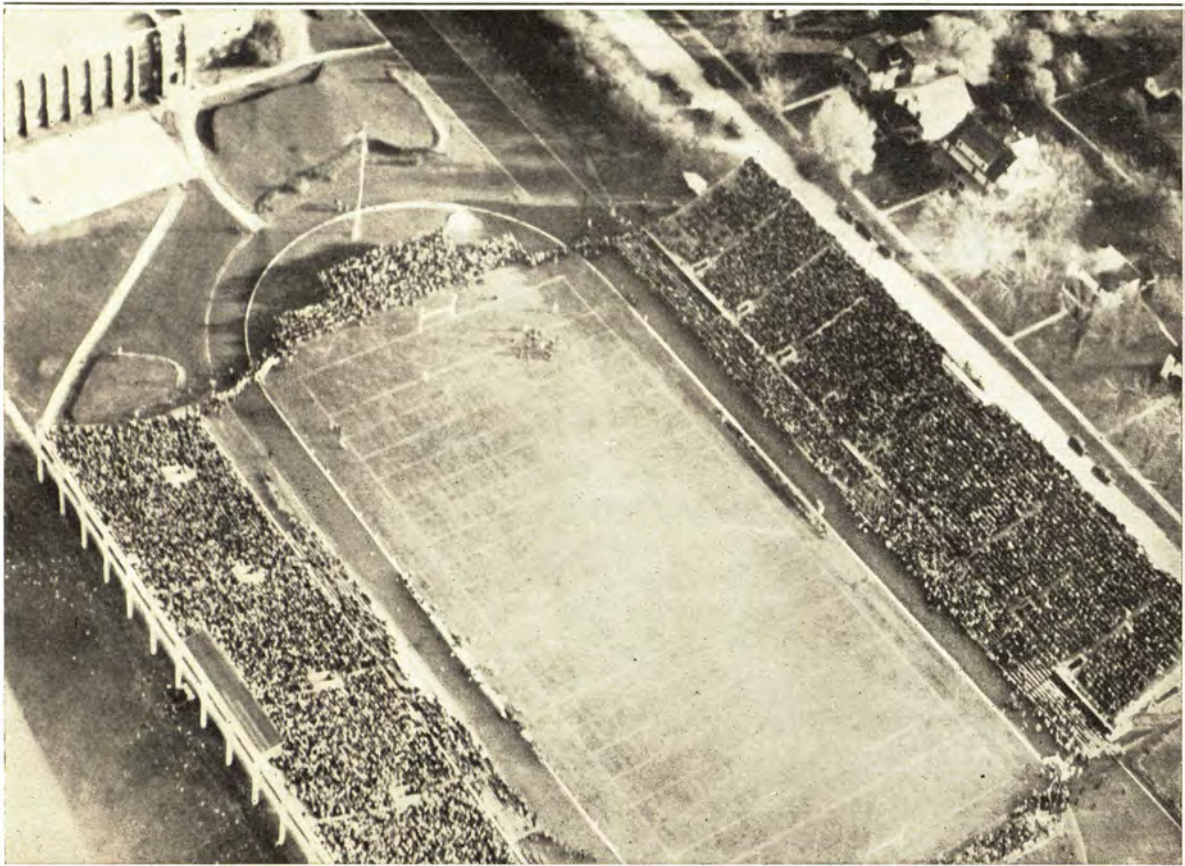
DES MOINES, IOWA

STATION WOI



DALE WILLIAMS

Maybe it ought to be "Stations WOI" for the three air voices of one of the nation's greatest educational radio and television stations carry hundreds of public services to the people of the midwest. Not the least of these services is the huge sports program seen and heard over WOI-AM-FM-TV. During the course of a normal year some 17 football broadcasts will be aired over the AM-FM facilities of the station. More than 40 football games will be televised in addition to many baseball games, boxing shows and wrestling exhibitions. The voice behind all of the WOI-originated broadcasts is that of the veteran Dale Williams. This year he'll bring even more fans every thrill of Iowa State football as many Iowa stations join the Cyclone network.



CLYDE WILLIAMS FIELD



MIXERS



PUMPS



SAWS



JETCRETE



HOISTS

WORLD FAMOUS



**CONSTRUCTION
AND
INDUSTRIAL
EQUIPMENT**

The Quality Line Since 1909

**CONSTRUCTION MACHINERY COMPANIES
WATERLOO, IOWA**

From Freshmen



To Seniors . . .



THEY ALL

A G R E E

IN AMES

THE GRID

IS TOPS FOR

GOOD FOOD

Hotel Sheldon-Munn

A Tangney-McGinn Hotel

An Iowa Company

- . . . Located at the Home of Iowa State.
- . . . Doing Business Exclusively in the State of Iowa.
- . . . Serving the Farm People of Iowa.
- . . . Supporting Iowa Activities.

**AMES
RELIABLE PRODUCTS CO.**

SUPPLEMENTARY FEEDS

Designed Especially for Iowa Feeders

Specialized Heavy Machinery

FOR THE CONSTRUCTION
AND MINING INDUSTRIES

Machine Shop — Foundry

Pattern Shop

Serving You Since 1872

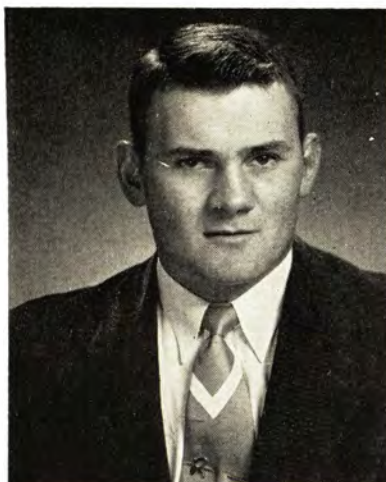
Eagle Iron Works

DES MOINES, IOWA

- - C Y C L O N E S - -



BARNEY ALLEMAN
Ankeny
Bert Evans — Merritt Parsons
Engineering



ROLLIE ARNS
Waverly
Mart Brandes
Farm Operation



FRED BEUTTLE
Park Ridge, Ill.
Ken Olson
Speech



BOB BRETTMAN
Elgin, Ill.
Emery Ebbert
Dairy Industry



CARL BRETTSCHEIDER
Dundee, Ill.
John Burneson
Physical Education



RALPH BROWN
Omaha, Neb.
Ken Kennedy
Electrical Engineering



MAX BURKETT
Rhineland, Wis.
Wayne Wallace
Engineering



ROGER BURNS
Red Oak
Homer Weiss
Physical Education



BILL BYRUS
Ames
Ken Wells
Forestry

319 Main Street

Ames, Iowa

McDOWELL'S

Tel. 287

Tel. 51

REAL ESTATE — INSURANCE

Bill Vogt

W. E. McDowell

Jim Spurrier, Jr.

• *The Spot for Homes*

IF IT'S INSURANCE WE WRITE IT!

GLOBE MACHINERY & SUPPLY CO.

East 1st & Court

DES MOINES, IOWA

Phone 4-3231

Headquarters

MILORGANITE FERTILIZER

RAP-ID-GROW LIQUID FERTILIZER

ARMOURS VERTAGREEN, 10-8-6, 5-10-5

TORO MOWERS

HUDSON SPRAYERS

SPRINGFIELD TRACTORS

DOW CHEMICALS

CARDEX LAWN & GARDEN TOOLS

ASSOCIATED COMPANIES

Cedar Rapids, Iowa
309-313 8th Ave. S. E.
Phone 3-3527

Davenport, Iowa
401 E. 2nd St.
Phone 2-7151

Spencer, Iowa
310 N. Railway
Phone 1786

The Great

ALL-STAR TEAM

CATERPILLAR

Reg. U. S. Patent Off.

With Its Full Line of

Heavy Construction Eqpt.

AND

Heavy Duty Farm Tractors

○ ○ ○ ○ ○

DIESEL TRACTORS

MOTOR GRADERS

BULLDOZERS

SCRAPERS

ENGINES

○ ○ ○

**GIBBS - COOK
EQUIPMENT COMPANY**

DES MOINES

MASON CITY

You, too, will be making a

Touchdown

if you do your

banking at

**The Ames Trust &
Savings Bank**

FIFTH & KELLOGG AVE.

*Member Federal Reserve System
Member F. D. I. C.*

DRINK
Coca-Cola
MADE IN U.S.A.

Delicious

Refreshing

DRINK
Coca-Cola
MADE IN U.S.A.

COLORADO LINE-UP (OFFENSE)

LE	LT	LG	C	RG	RT	RE
Knafelc 83 Fisher 87	Allen 75 Knowlton 63	Swigert 62 Demo 67	Huffer 56 Hill 50	Knowlton 63 Hunt 64	Marshall 38 Dietrich 78	Evans 82 Raveling 85
QB						
Williams 32						
LH						
Jordan 11						
RH						
Shelton 12						
FB						
Curtis 21						
QB						
Venzke 14						
LH						
Johnson 26						
RH						
Bernard 18						
FB						
Horton 34						

IOWA STATE LINE-UP (DEFENSE)

LE	LT	LG	C	RG	RT	RE
Hemingway 85 Alleman 83	Thompson 89 Heick 76	Heick 76 Wilson 69	Rawley 50 Arns 55	Brettschneider 81 Coe 51	Matheson 73 Schillmoeller 74	Swale 88 Cunningham 84
QB						
Mellgren 7						
LH						
Eichorn 27						
RH						
Walker 25						
FB						
Cox 40						
QB						
Shibley 20						
LH						
Cherpinsky 29						
RH						
Cox 40						
FB						
Burkett 32						
QB						
Shupe 35						

OFFICIALS

Referee: Bob Miller (Missouri)
Umpire: Grady Skillern (Oklahoma)
Linesman: Carl Kopelk (Emporia)
Judge: Dick Pendleton (Oklahoma)

See line-ups on back of preceding page for Iowa State offense and Colorado defense

IOWA STATE LINE-UP (OFFENSE)

LE	LT	LG	C	RG	RT	RE
Hemingway 85 Alleman 83	Thompson 89 Lessin 67	Wilson 69 Brettschneider 81	Arns 55 Rawley 50	Schillmoeller 74 Moosman 68	Matheson 73 Brettman 73	Rohwedder 80 Swale 88
QB						
Mann 3						
LH						
Spence 26						
RH						
Cox 40						
FB						
Burkett 32						
QB						
Cozzi 33						
LH						
Cherpinsky 29						
RH						
Congiardo 44						
FB						
Plantan 8						

COLORADO LINE-UP (DEFENSE)

LE	LT	LG	C	RG	RT	RE
Branby 74 Glass 80	Greenwood 61 Stander 71	Fischer 68 Klamann 72	Huffer 56 Hunt 64	Shepherd 51 Dalthorp 55	Morton 76 Mitchell 70	Glass 80 Hunt 64
QB						
Bernardi 18						
LH						
Johnson 26						
RH						
Brookshier 23						
FB						
Gray 17						
QB						
Horne 28						
LH						
Figner 25						
RH						
Dalthorp 55						
FB						
Hunt 64						

OFFICIALS

Referee: Bob Miller (Missouri)
Umpire: Grady Skillern (Oklahoma)
Linesman: Carl Kopelk (Emporia)
Judge: Dick Pendleton (Oklahoma)

See line-ups on back of following page for Iowa State defense and Colorado offense

FOR YOU

FIRST PREMIUM QUALITY CIGARETTE REGULAR AND KING-SIZE!

IOWA STATE COLLEGE SQUAD

2	Burns '55	B	19	5-10	155
3	Mann '54	B	21	5-10	170
7	Mellgren '53	B	22	5-11	163
8	Plantan '54	B	20	5-11	181
20	Shibley '53	B	24	6-2	200
21	Rice '53	B	21	5-11	175
22	Mielkus '54	B	20	6-1	175
23	Houser '54	B	21	5-11	170
25	Walker '53	B	21	5-11	167
26	Spence '55	B	19	6-1	187
27	Eichorn '53	B	21	5-11	167
29	Cherpinsky '54	B	21	6-1	190
31	Clendenning '53	B	25	5-10	180
32	Burkett '55	B	19	6-1	190
33	Cozzi '54	B	22	5-11	188
34	Beutler '55	B	19	5-6	180
35	Shupe '54	B	20	5-11	185
36	Stevenson '55	B	20	5-9	182
37	Rooker '54	B	20	6-1	184
40	Cox '54	B	20	6-0	185
42	Gates '55	B	19	5-11	175
44	Congiaro '53	B	21	5-11	175
45	Holeman '55	B	19	5-10	175
48	Smith '55	B	19	5-10	180
50	Rawley '54	C	21	6-1	184
51	Coe '54	T	20	6-0	190
52	Johnson '55	C	19	6-0	193
53	Shoop '54	C	20	6-1	193
54	May '55	C	19	6-0	186
55	Arns '53	C	21	6-1	220
56	Horras '55	G	19	6-1	187
60	Olson '53	G	21	6-0	180
61	Kowalski '54	G	20	5-11	193
63	Nichols '53	G	21	5-9	180
66	Champlin '54	T-G	20	6-0	194
67	Lessin '54	G	21	6-1	219
68	Mooman '54	G	20	6-2	190
69	Wilson '54	G	20	6-1	202
70	Byrus '53	T	20	6-2	217
71	Hackman '55	T	19	6-1	192
72	Brown '54	T	20	6-0	206
73	Matheson '53	T	20	6-3	206
74	Schillmoeller '53	T	20	6-2	215
75	Brettman '53	T-G	21	6-2	194
76	Heik '53	T	21	6-0	230
78	G. Allenman '55	T	19	6-1	186
79	Mohr '55	E	20	6-3	205
80	Rohvedder '54	T	20	6-3	197
81	Brettschneider '53	G	20	6-2	210
82	Lindstrom '55	E	19	5-11	180
83	B. Allenman '55	E	19	6-1	185
84	Cunningham '53	E	21	6-2	185
85	Hemingway '53	E	21	6-2	183
86	Thalacker '55	E-G	19	6-0	180
87	Tidd '55	E	20	6-1	182
88	Swale '55	E	20	6-2	200
89	Thompson '54	T-G	20	6-0	206



... Much Milder

CHESTERFIELD

LARGEST SELLING CIGARETTE IN AMERICA'S COLLEGES

COLORADO UNIVERSITY SQUAD

11	*Jordan '53	B	22	5-11	180
12	*Shelton '53	B	23	5-6	147
14	*Venzke '53	B	20	6-0	180
17	*Gray '54	B	19	5-7	165
18	Bernardi '55	B	20	5-9	173
19	Neary '55	B	19	6-0	175
21	*Curtis '53	B	21	6-0	185
23	*Brookshier '53	B	21	5-11	175
25	*Figner '54	B	21	6-0	184
26	*Johnson '54	B	20	6-1	185
27	*Hardy '55	B	19	6-0	180
28	*Horne '53	B	21	6-0	180
32	*Williams '53	B	22	5-11	193
34	*Horton '54	B	20	5-11	184
35	Parker '55	B	20	6-1	180
38	Marshall '54	T	20	6-1	195
50	Hill '54	C	19	6-2	195
51	*Shepherd '53	C	22	6-0	185
55	*Dalthrop '53	C	21	6-0	185
56	*Ken Huffer '54	C	19	6-0	196
60	Cain '54	G	20	5-11	210
61	*Greenwood '55	T	20	5-10	190
62	*Swiger '53	G	21	6-0	185
63	*Knowlton '54	G	20	6-3	195
64	Hunt '54	G	20	6-0	190
67	Demo '54	G	20	6-1	195
68	*Fischer '54	G	21	5-10	210
69	Zarit '54	G	23	5-8	230
70	Mitchell '54	T	20	6-4	212
71	*Stander '54	T	20	6-4	220
72	*Klamann '54	T	21	6-3	208
74	*Granby '53	E	23	6-1	195
75	*Allen '53	T	21	6-0	195
76	*Morton '54	T	21	6-3	210
77	Blasongame '54	T	21	6-1	225
78	*Dietrich '53	T	21	6-2	200
80	Class '54	E	20	6-1	185
82	*Evans '53	E	21	6-2	195
83	*Kafele '54	E	20	6-4	200
85	Raveling '54	E	20	6-2	190
87	Fisher '54	E	21	6-3	195

*Lettermen

- - C Y C L O N E S - -



JIM CHAMPLIN
Ames
Ken Wells
Mechanical Engineering



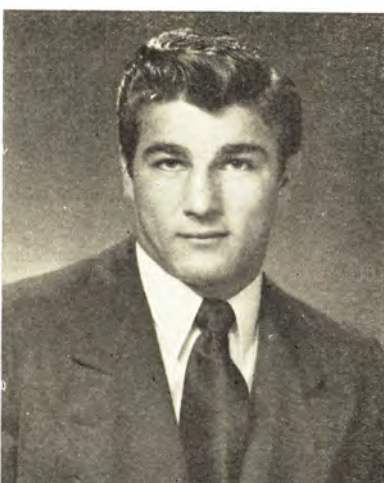
DICK CHERPINSKY
Sioux City
Mark McLarnan
Science



BOB CLENDENING
Franklin Park, Ill.
Sam England
Physical Education



CHUCK COEY
Park Ridge, Ill.
Ken Olson
Animal Husbandry



FRANK CONGIARDO
Murphysboro, Ill.
Ed Bencini
Science



DICK COX
Ames
Ken Wells
Science



STAN COZZI
Marshalltown
Leonard Cole
Industrial Economics



ROGER CUNNINGHAM
Mason City
Harry Helgason
Mathematics



EMORY EICHORN
Marshalltown
Leonard Cole
Engineering

On or Off the Football Field—"YARDS ARE IMPORTANT"

We have the Quarterbacks for your team
in the following line-ups:

ADAMS
BLAW-KNOX
BROS MFG. CO.
BUCYRUS-ERIE
DROTT
GORMAN-RUPP
HENDRIX
HOUGH
HUBER
INGERSOLL-RAND
INTERNATIONAL
KOEHRING

KWIK-MIX
LaCROSSE
LaPLANT CHOATE
PARSONS
PITMAN
PULLMAN STANDARD
CO.
ROEBLING
SEAMAN MOTORS
STANDARD STEEL
UNIVERSAL
WAYNE



Distributed by

HERMAN M. BROWN COMPANY

Iowa's Oldest and Largest Construction Equipment Distributor

SIOUX CITY

DES MOINES

CEDAR RAPIDS

The H. L. Munn Lumber Co.

Ardently Supports

IOWA STATE COLLEGE

athletic teams and events.



We are proud of their determination and fine sportsmanship

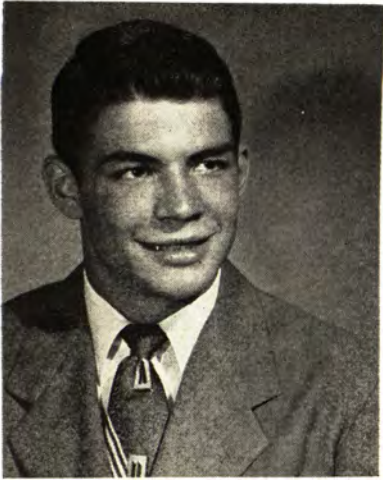


Best wishes for a successful season.

H. L. MUNN
LUMBER COMPANY

AMES ★ GILBERT ★ HUXLEY ★ KELLEY ★ SLATER

- - C Y C L O N E S - -



CHUCK GATES
Downers Grove, Ill.
Jim Stahl
Engineering



GEORGE HEICK
Tipton
Truman Manship
Farm Operation



KEITH HEMINGWAY
Iowa City
Frank Bates
Animal Husbandry



KEITH HOLEMAN
Grundy Center
Earl Page
Engineering



WAYNE HORRAS
Fairfield
Bob Liddy
Animal Husbandry



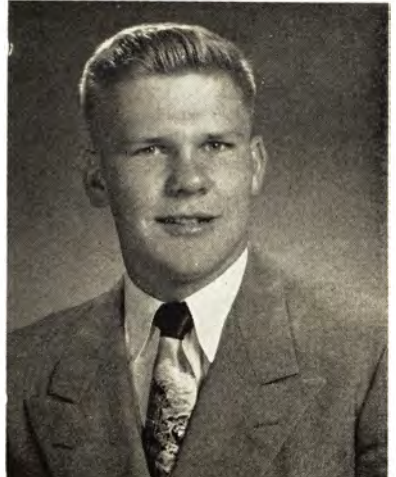
DON HOUSER
Boone
Larry Baldus
Physical Education



JIM JOHNSON
Denison
Glenn Stavenhagen
Engineering



GEAN KOWALSKI
Dubuque
Gailen Thomas
General Engineering



JACK LESSIN
DeWitt
Harold Birney
Veterinary Medicine

THE STORE YOU'LL LIKE—
FOR MEN AND BOYS

Ober's

DOWNTOWN

AMES

Motor Sales and Service

DODGE — PLYMOUTH
DODGE "Job-Rated" TRUCKS

Phone 121

Ames, Iowa

Norman Dunlap

**AMES
BUILDING & LOAN
ASSOCIATION**

*A good place for
your savings*

ECONOMY FORMS CORPORATION

HOME OFFICE — DES MOINES, IOWA

FORM ENGINEERING AND
RENTAL SERVICE

STEEL FORMS
FOR
CONCRETE CONSTRUCTION

4301 N.E. 14th St.

Des Moines, Iowa

Dunlap's
OLDSMOBILE — CADILLAC
SALES and SERVICE

Phone 751

222 Duff Ave.

AMES, IOWA

**WATER CONDITIONING
EQUIPMENT**

GENERAL FILTER CO.

PHONE 226

AMES, IOWA

AMES DAILY TRIBUNE

*A "Hometown" Newspaper
for Ames and Story County
people*

Whattoff Motor Co.

STUDEBAKER

Sales — Service

PHONE 992

118 Hayward

in Campustown

- - C Y C L O N E S - -



JACK LINDSTROM
Aurora, Ill.
Ken Zimmerman
Engineering



RICH MANN
Spencer
Floyd Tate
Industrial Economics



BOB MATHESON
Park Ridge, Ill.
Ken Olson — Kermit Ambrose
Forestry



ELMER MAY
Dubuque
Gailen Thomas
Animal Husbandry



BOB MELLGREN
Eagle Grove
A. J. Van Citters
Physical Education



DICK MOHR
DeWitt
Harold Birney
Agricultural Education



ERHARD MOOSMAN
Elgin, Ill.
Emerv Ebbert
General Engineering



DWIGHT NICHOLS
Des Moines
Archie Johnson
Industrial Economics



BOB OLSON
Red Oak
Homer Weis
Farm Operation

ZEIDLER

Concrete Products

CULVERT PIPE—SEWER PIPE—MANHOLE PIPE — DRAIN TILE
BLOCKS — BRICKS — JOISTS — ROOF SLABS

Zeidler Concrete Products Co.

WATERLOO

C. A. BLUEDORN, *Pres. & Gen. Mgr.*

CLEAR LAKE

A. W. SCHULTZ, *Mgr.*

★ HIGHWAYS

★ STREETS

★ BRIDGES

★ AIRPORTS

★ AIRPORT FACILITIES

Green Construction Company

Masonic Temple Building

PHONE 4-0311

DES MOINES, IOWA

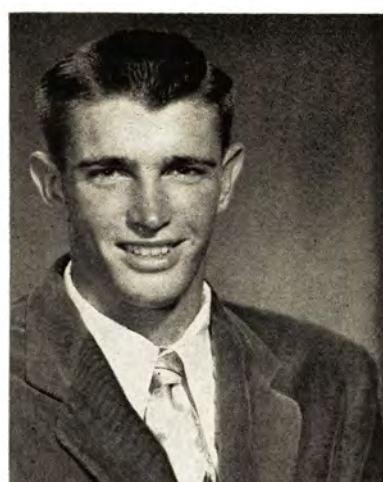
- - C Y C L O N E S - -



JIM RAWLEY
Joliet, Ill.
Herm Walser
Forestry



DAN RICE
Clear Lake
Bob Heston
Industrial Economics



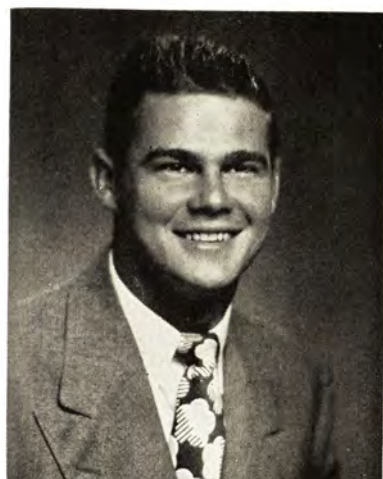
BOB ROHWEDDER
Albert City
Steve Everett
Animal Husbandry



JIM ROOKER
Sioux City
Mark McLarnan
Engineering



ED SCHILLMOELLER
Skokie, Ill.
Fred Vesel
Mathematics



BOB SHIBLEY
Fort Madison
Milt Kokjohn
Physical Education



RON SHOOP
Fort Madison
Dwight Hoover
Science



PAUL RAY SHUPE
Chariton
Ralph Reynolds
Physical Education



JIM SMITH
Jackson, Minn.
Lou Swearingen
Engineering

Ames Merchants

CYCLONE BOOSTERS

Allen Motor Company, Chevrolet-Buick

Ames Building & Loan Association

Ames Daily Tribune

Ames Laundry

Ames Reliable Products Co.

Ames Stationers

Ames Trust and Savings Bank

J. D. Armstrong Heavy Hauling Inc.

Armstrong Tractor & Truck Company Inc.

Bates Jewelers

Ben Franklin Store

Berck Clothing Co.

Campus Cafe

Campus Drug Co.

Carter Press

Christensen Appliance Store

Coe's Flower & Gift Shop

College Savings Bank

College Town Studio

Dunlap's Motor Co.

Eschbach Music House

General Filter Co.

S. Hanson Lumber Co.

Hotel Sheldon Munn

KASI Broadcasting Studio

Lindquist Cleaners

L-Way Cafe

McDowell's Real Estate - Insurance

Motor Sales and Service

H. L. Munn Lumber Company

Ober's Store for Men and Boys

Palmer Plumbing Co.

J. C. Penney Co.

Register & Tribune - Campus

Rushing's Inc.

Smith Motor Co.

Sportsman's of Ames

Spriggs Pharmacy

Stephenson's Drygoods

Student Supply Store

Frank T. Talbert, Jeweler

Tom's Grill

Union Story Trust and Savings Bank

Weaver Jewelers

Whattoff Motor Company

New RCA VICTOR television as low as \$199⁹⁵

with the exclusive **"Magic Monitor"** circuit system
...acts like an engineer inside your set



When you can't be at
the game, see it on
RCA Victor Television!

The RCA Victor Shelley. Thrilling "Magic Monitor" circuit system. Compact metal cabinet is finished in gleaming ebony. Has phono-jack for record changer. Model 17T200, \$199.95

And for the ultimate in television quality, also see RCA Victor Television Deluxe, the finest made.

Prices shown are suggested list prices but subject to Government Price Ceiling Regulations and to change without notice. Slightly higher in far West and South.

Every year more people buy **RCA VICTOR** than any other television

Tmks. ®

Division of Radio Corporation of America

SIDLES COMPANY - 8 Seventh Street - Des Moines, Iowa

It's features like the exclusive new "Magic Monitor" circuit system that make—and keep—RCA Victor the world's *most wanted* television! Here's how it *constantly guards* picture quality:

It screens out static—automatically.

It amplifies weak signals, holds pictures bright and steady—automatically.

It tunes in best sound with clearest picture—automatically. It monitors picture quality as engineers do in television studios.

Finest listening, too. The perfectly balanced tone of the famous "Golden Throat."

Easy adaptation to UHF. These sets are by the same company that pioneered UHF television.

Fine cabinetry. Quality styling and careful craftsmanship mean lasting beauty.

Dependable service. No other manufacturer offers service on a national basis by its *own* electronic experts. Ask for details of RCA Victor Factory-Service Contracts at your dealer's.



The 21-inch Lindale. Contemporary styling! Superbly grained wood surfaces. Cabinet in mahogany or walnut finishes (blond slightly higher). Model 21T227, \$389.50



-- B U F F A L O E S --



Frank Bernardi



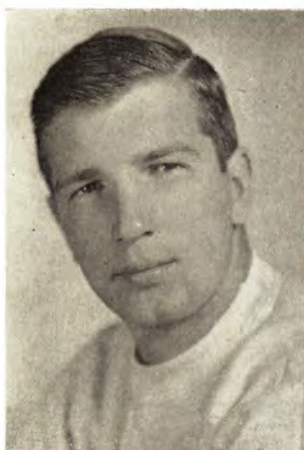
Tom Cain



Bob Morton



Jack Swigert



Tom Evans



Ken Huffer



Jim Dalthorp



Roy Shepherd



Bill Allen



Don Greenwood



Roger Hunt



Dick Knowlton

Cross Country Action

After a period of years as "two mile" the fall running program in the Big Seven is returning to actual cross country running this fall. Probably to the extreme gratification of the old timers who thought nothing of five mile runs. (Ed. note: Neither do we).

This fall for the first time since the 1930's conference runners will run at the three mile distance on cross country courses. In recent years the event was run on the track between halves of football games. Since a three mile event will take more time than the 15-minute half time period it means the end of running before the big football crowds. As a result the cross country meets will be run in the morning of the games, usually at 11 a.m.

Here at Iowa State the course is laid out over the beautiful 18-hole golf course. The course is also the scene of the state high school cross country meet which will be run at 1.8 miles here Nov. 1.

Coach Burl V. Berry, starting his third year at Iowa State, will have only one letter winner on the 1952 squad. He is George Eastburn, junior from Watseka, Ill. Arnie Swanson, letterman from Shenandoah, has quit as a runner.

The squad lists 13 men for action this fall although Berry has his entire track squad for the year out for fall workouts. The freshmen, too, are getting in extra work this fall.

In addition to Eastburn, other men who were on the squad last year, are Gene Hart, Des Moines; John Maney, Ames; Dick Robbins, Woodward, Ken Mallas, Boone. The other men are newcomers to the squad: Stan Petrick, Cedar Rapids; John Williams, formerly of Cedar Rapids but now residing in Des Moines; Randy Betz, a Marengo youngster who never ran in high school; Ray Ball, state half mile champion from New Hampton; Gerald Paulsen, from Huxley and a brother of Don, the basketball center of a few seasons past; Jim Eash, Wellman (hometown of Coach Berry, incidentally); John McAnelly, Des Moines, and Lou Fisher, LaGrange, Ill.

The 1952 cross country squad will run a schedule of four meets. In addition to the contest today, the harriers will be at Columbia, Oct. 25 for a 3-mile race with the University of Missouri; at Manhattan, Kan., Nov. 8, for a race with Kansas State, and at Lawrence, Kan., Nov. 15 for the Big Seven meet. The only other home event will be here Nov. 1 when Drake will furnish the opposition. That will be the same day as the high school meet.

Nov. 1 will be one of the heaviest days of sports activity here in the fall. In addition to the Drake cross country run, the Drake football game, there will be the four state titles to be decided among the high school runners. More than 100 of the prep hill and dale men will be in action that day.

ANOTHER JOB FROM THE PRESSES OF

CARTER PRESSES

Printing . . . Engraving . . . Stationers

See our display of BUZZA-CORDOZA Everyday, and Christmas Cards

We also feature that hilarious BARKER line.

125 Welch

Campustown - Ames

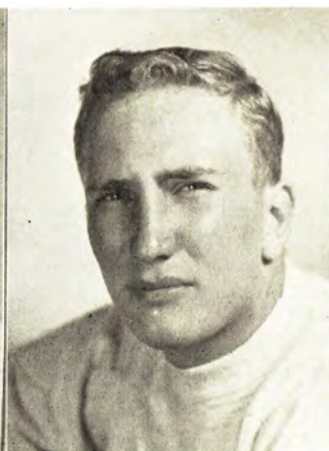
-- B U F F A L O E S --



Don Branby



Gary Knafele



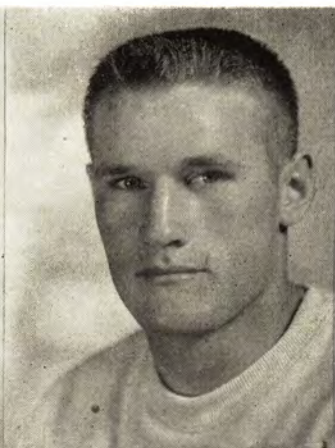
Jim Stander



Bill Mitchell



Zack Jordan



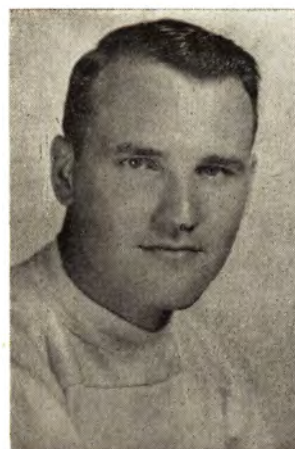
Carroll Hardy



Ralph Curtis



Woody Shelton



Roger Williams



Ron Johnson



Bill Fischer



Tom Brookshier

CYCLONE POWER . . . 1952 SQUAD

Union Story Trust & Savings Bank

"Your Friendly Main Street Bank"

Member Federal Deposit Insurance Corp.



Front row: Stan Cozzi, Bo Walker, Jack Erickson, Bob Olson, Bob Shibley, Ron Shoop, Rollie Arns, Bob Brettman, Bill Byrus
Second row: Erhard Moosman, Jim Champlin, Chuck Coey, Bob Rohwedder, Jack Lessin, Wayne Horras, Max Burkett, Clyde Titus, Gean Kowalski
Third row: Mike Swale, Ron Thompson, Bob Matheson, Bill Wilson, Dan Rice, Dick Cox, Dwight Nichols, Keith Hemingway, Ralph Brown, Weldon Thalacker
Fourth row: Jim Johnson, Barney Alleman, George Heick, Bill Plantan, Jim Smith, Jack Lindstrom, Roger Cunningham, Elmer May, Lee Spence.
Fifth row: Fred Beuttler, George Alleman, Jim Rooker, Chuck Gates, Roger Burns, Paul Shupe, Don Houser, Kim Tidd, Emory Eichorn, Keith Holeman
Back row: Senior Manager Cloyce Palmer, End Coach Herb Cormack, Freshman Coach Bob Lamson, Line Coach Burt Moore, Head Coach Abe Stuber, Frank Congiardo, Dick Cherpinsky, Bob Mellgren, Ed Schillmoeller, Carl Brettschneider, Backfield Coach Cap Timm, Junior Manager Kay Kahlor.

.. C Y C L O N E S ..



LEE SPENCE
Cherokee
Otto Huebner
Engineering



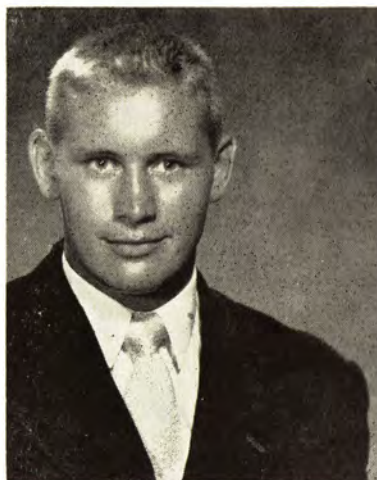
AL STEVENSON
St. Louis, Mo.
E. B. Slater
Science



MIKE SWALE
Mason City
Bob Lux
Industrial Economics



RON SWANSON
Chicago, Ill.
Fred O'Keefe
Physical Education



RON THOMPSON
Cherokee
Otto Huebner
Science



CLYDE TITUS
Des Moines
George Falk
Engineering



BILL WILSON
Oelwein
George Dutcher
Industrial Economics



CHUCK HACKMAN
Jefferson City, Mo.
John Griffith
Agricultural Education

**R
E
P
A
I
R
S**



**S
E
R
V
I
C
E**

REFRIGERATION

**Armstrong
Tractor and Truck Co., Inc.**

PHONE 3031

BRIDGE PLANK and TIMBERS

PILING -- POLES -- POSTS

TREATED or PLAIN
CREOSOTED WOOD BLOCKS

BUILDING MATERIALS

SNOW FENCE -- SURVEY STAKES

Wheeler Lumber Bridge & Supply Co.

Visit Our Wholesale Distribution Yard

PHONE 3-5219
P. O. BOX 815

2260 FLEUR DRIVE
DES MOINES, IOWA

*"I'd walk a mile for a
CAMEL"*



*So Mild—
So Flavortful!*

