

OFFICIAL **25** PROGRAM

# IOWA STATE VS MISSOURI

*50th Anniversary*



CLYDE WILLIAMS FIELD - AMES, IOWA - OCT. 15, 1955

# The H. L. Munn Lumber Co.

Ardently Supports

## IOWA STATE COLLEGE

Athletic Teams and Events

•

We are proud of their determination and fine sportsmanship

•

Best wishes for a successful season



# CARTER PRESS

*Fine Printing*

**Phone CE 2-2504**

**125 Welch Avenue**

# Tigers Face Cyclones



Missouri's Tigers move into Clyde Williams field here today to take part in the first look in nearly a month at the Iowa State team. The Cyclones have not played here in Ames since the opening game with Denver, Sept. 17.

Both clubs today are hungry for victory. Missouri has met Maryland, Michigan, Utah and Southern Methodist, losing by scores of 13-12, 42-7, 20-13 and 13-6.

Iowa State has bowed to Denver, 19-7, and Illinois, 40-0. Last week the Cyclones were held to a tie, 7-7, by Kansas. That game has been a bitter memory for the Cyclones all week. Mechanical mistakes on the part of the referee cost the Cyclones a victory as Kansas tied the contest with 1:19 to play.

Down through the years the two teams have battled 48 times with Missouri scoring 26 wins against 16 for the Cyclones. Six times the Tiger and the Cyclone were deadlocked when the game was over.

Home fans have a vivid memory of the last time the two teams collided here in Ames. Rated at least a two touchdown underdog, Iowa State pulled the top upset of the Big Seven season by scoring a 13-6 win over the Tigers.

That was a homecoming crowd and no sweeter victory could have been racked up for the fans. In that game the Cyclones contained the Tigers fairly well early in the game, trailing 6-0. When the lead extra point was scored, making the count 7-6, the home forces really became vicious. From that point on they hit with crushing power, both on offense and defense to completely control the game for the upset.

Last year at Columbia the Tigers scored a 32-14 win over the thinly-manned Cyclones. Over the past five years the two teams have broken even. There was a brilliantly played 20-20 tie in 1950, Iowa State won, 21-14 in 1951; Missouri scored a 19-0 shutout in 1952. The 1953 and 1954 scores have already been mentioned.

The series started back in 1895 with a 6-0 win for Iowa State. During the first 12 years of the series the Cyclones won nine games, lost one and tied two. But in the remaining time the Tigers have more than controlled the tide of victory in running up its total of 26 wins.

Might just mention here—with no connection with today's game—that next week is homecoming. Kansas State will be the foe. Tickets can be ordered from the business office.

YOUR TEAM

**IOWA STATE CYCLONES**

YOUR BANK

**THE AMES TRUST &  
SAVINGS BANK**

FIFTH & KELLOGG AVE.

Member Federal Reserve System

Member F. D. I. C.

MANUFACTURING

**Heavy Machinery**

for

THE CONSTRUCTION  
AND MINING INDUSTRIES

**Eagle Iron Works**

Des Moines, Iowa

SERVING YOU SINCE 1872

From Freshmen



To Seniors . . .



THEY ALL

**A G R E E**

IN AMES

**THE GRID**

IS TOPS FOR

**GOOD FOOD**

**Hotel Sheldon-Munn**

A Tagney-McGinn Hotel



MIXERS



PUMPS



SAWS



JETCRETE



HOISTS

AMERICA'S FINEST LINE OF  
CONSTRUCTION &  
INDUSTRIAL EQUIPMENT



More and more truck mixer fleet  
owners are standardizing on

**CMC TRANSCRETES**

*The Quality Line Since 1909*

CONSTRUCTION MACHINERY COMPANIES  
WATERLOO, IOWA

# Intercollegiate Athletics Observes NCAA'S

## 50th Anniversary



**I**NTERCOLLEGIATE ATHLETICS, during the current college year, 1955-56, commemorates the golden jubilee of the National Collegiate Athletic Association. The universities and colleges of the nation take pleasure in observing their national organization's 50th anniversary because the development and progress of the NCAA is the story of intercollegiate athletics' own expansion and improvement.

Fifty years is a long time. In 1905, the key of offense in college football was the flying wedge . . . organized track and field competition was just getting under way . . . the original peach basket goal was about to be replaced by the open metal hoop in basketball but the sport still was new and strange to most sections of the nation . . .

The NCAA evolved from a meeting of 13 colleges and universities called in 1905 to reorganize the game of intercollegiate football. (The rugged nature of the game was causing too many injuries and deaths.) A permanent organization was established, March 31, 1906.

Today, the NCAA is composed of more than 465 colleges and universities, athletic conferences and associations, devoted to the sound administration of intercollegiate athletics. Also today, the member institutions of the NCAA provide intercollegiate athletic competition for more than 130,000 students annually in more than 26 different sports. The men responsible for the coaching and administration of intercollegiate sports firmly believe that these competitive athletic programs are a vital part of the educational system which prepares our youth for future productive careers in society.

The universities and colleges of the nation have joined together in one Association—the NCAA—for purposes of athletic discussion, legislation and administration at the national level. The NCAA is solely and completely responsive to the will of its members as expressed by their governing boards and chief executive officers. The NCAA concerns itself with any phase of college athletics which spreads across regional lines and becomes

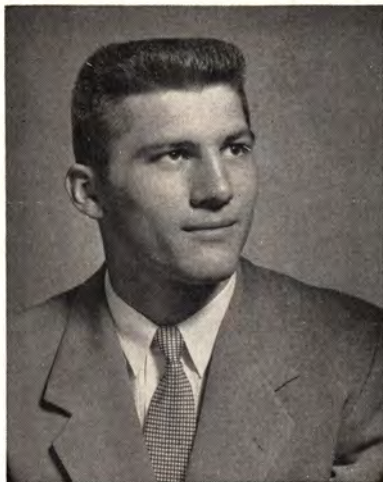
national in character, and a majority of the member institutions concur that national action is needed.

These member institutions carry on many diversified activities through the NCAA. For example, they:

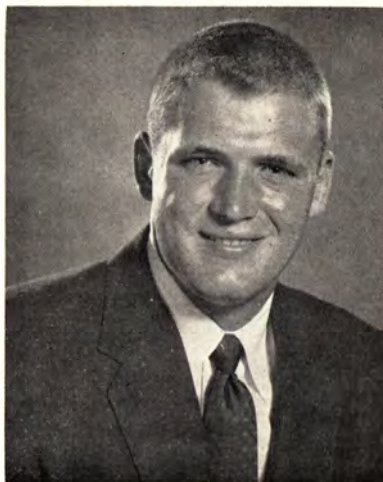
- establish and maintain athletic standards.
- formulate and publish the official playing rules for college sports.
- conduct National Collegiate Championship events in 13 sports.
- maintain the official national statistics and records of college sports.
- provide financial and other assistance to groups interested in the promotion and encouragement of intercollegiate and intramural athletics.
- conduct studies as a means of developing solutions to athletic problems; i.e., the recent surveys on television, post-season events, length and time of playing and practice seasons, admission taxes, college baseball, etc.
- participate in the U. S. Olympic and Pan American movements in matters of fund-raising, sports organization and the selection of coaches and athletes for United States teams.
- administer a group insurance program providing catastrophe medical coverage.
- maintain a large film library covering play in National Collegiate Championship events.

The development and expanded activities of the NCAA reflect the progress of intercollegiate athletics over the past half century. The NCAA and its member institutions, in the years ahead, will continue to make every effort to provide maximum opportunities for our youth to enjoy the experience of competitive athletics as an integrated part of their over-all college education.

# • ❖ C Y C L O N E S ❖ •



**BRUCE ALEXANDER**  
 Waterloo  
 George Dutcher  
 Architecture



**JOHN ALLISON**  
 Homewood, Ill.  
 Tiny Huddleston  
 Industrial Administration



**JERRY BARTELT**  
 Baltimore, Md.  
 Bob Nowaskey  
 Civil Engineering



**BOB BIRD**  
 Waterloo  
 Lou Breitbach  
 General Engineering



**GRANT BLANEY**  
 Chicago, Ill.  
 Elmer Sahlin  
 Physical Education



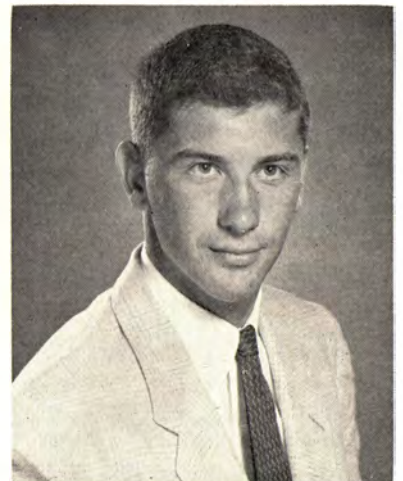
**JOHN BRECKENRIDGE**  
 Charles City  
 Truman Manship  
 Industrial Administration



**RON BREDESON**  
 Lake Mills  
 Jim Craven  
 General Engineering



**GEORGE BUCKMAN**  
 Spring Valley, Ill.  
 Dick Nesti  
 Industrial Administration



**FRED BUNCH**  
 Vandalia, Ill.  
 Tiny Huddleston  
 Physical Education

# FATHER OF THE SPLIT-T

By Bill Callahan

(Director of Sports Publicity, University of Missouri)



DON FAUROT

One of the least-traveled "top names" in the football coaching profession, Don Faurot has held just two major jobs—both in Missouri—in his 26 years as a collegiate head coach.

Native-son Faurot was called back to the Missouri campus in 1935 just 10 years after his graduation. He had compiled a brilliant nine-year record at Kirksville Teachers when Tiger officials summoned him to rejuvenate the school's down-at-the-heels football program.

"They offered me \$4,500, and I think I would have come for nothing," Faurot confided afterwards to friends.

As it was, Missouri got a real bargain, for the trim, dynamic boss has been on the job ever since, except for a 3-year Navy tour (1943-45) during World War II. Among active coaches, his longevity at one institution is exceeded only by Lou Little of Columbia, who greets his twenty-sixth Lion squad this autumn.

Faurot led the Tigers into football's big-time in the late thirties, but it was his introduction of a new offensive wrinkle—the Split or Sliding T Formation—in 1941 that brought the jut-jawed Missourian even greater recognition.

Two years ago Don was elected to Missouri's Sports Hall of Fame. He is a past-president of the American Football Coaches Association, and has authored a book: "Secrets of the Split T Formation."

The 53-year old coach can look back on a productive record. His M.U. scoreboard shows 96 wins against 69 losses and 9 ties. At Kirksville, his clubs had a composite 63-13-3 mark for an overall aggregate of 159 games won, 82 lost and 12 tied.

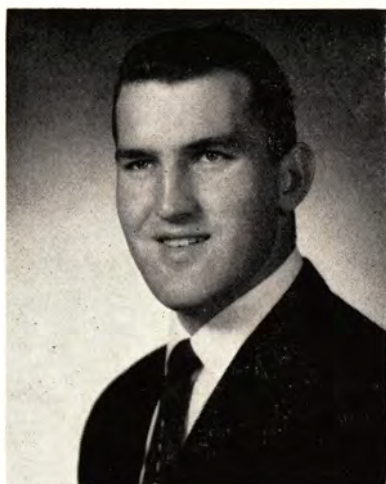
While in the service, Faurot coached the 1943 Iowa Pre-Flight Seahawks which lost only to Notre Dame, and the following year was skipper of the Jacksonville Naval Air Station Team.

Faurot lifted Missouri into national prominence by winning his first Big Six title in 1939 and repeating in 1941 and 1942. These were the years that produced three Tiger All-Americans—quarterback Paul Christman, Center Darold Jenkins, and Halfback Bob Steuber. Four Faurot-coached squads have participated in bowl games—the 1939 (Orange), 1941 (Sugar), 1948 (Gator) and 1949 (Gator) squads.

As an undergraduate at Missouri, Faurot lettered in football, basketball, and baseball. He was a fullback on Gwinn Henry's 1923 and 1924 teams—playing weight 150 pounds—and also captained the basketball team. Graduated in 1925, he coached the Missouri freshmen one year and completed his requirements for a M.A. degree.

His dad, incidentally, was an Iowa Stater.

# ~ **TIGERS** ~



**PAUL BROWNING**  
 Left Guard



**HAROLD BURNINE**  
 Right End



**BILL CRAIG**  
 Left End



**JERRY CURTRIGHT**  
 Left Halfback



**FRANK CZAPLA**  
 Left Tackle



**DAVE DOANE**  
 Quarterback



**JAY HANKINS**  
 Halfback

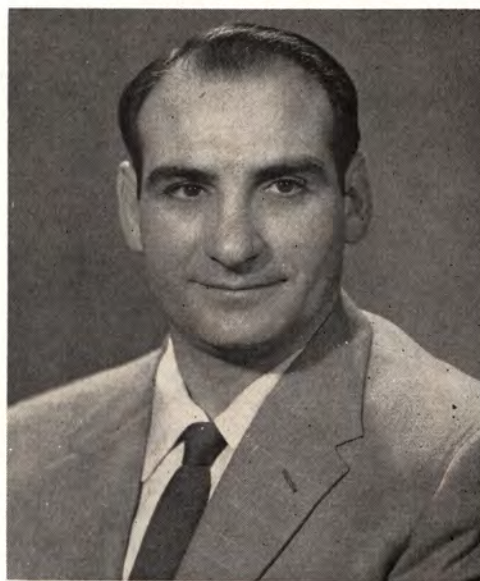


**DON HOPKINS**  
 Right Tackle

# CYCLONE COACHES



LOUIS MENZE  
ATHLETIC DIRECTOR



VINCE DI FRANCESCA  
HEAD FOOTBALL COACH



ALEX AGASE  
LINE COACH



JERRY CARLE  
BACKFIELD COACH



KEN HULSLANDER  
ASSISTANT LINE COACH



ARCH STEEL  
HEAD FRESHMAN COACH



CLAYTON SUTHERLAND  
ASSISTANT FRESHMAN COACH



BERYL TAYLOR  
TRAINER

THE GREATEST  
ALL STAR TEAM  
IS  
**GIBBS - COOK'S**  
LINEUP OF  
CONSTRUCTION EQUIPMENT

ATHEY  
CATERPILLAR  
DOMOR  
FLECO  
HELTZEL  
HYSTER  
LINK-BELT SPEEDER  
MARTIN  
PIONEER  
REX  
QUICKWAY

**GIBBS - COOK**  
EQUIPMENT COMPANY

Des Moines

Mason City

**JAMES THOMPSON  
& SONS**

**BUILDING CONTRACTORS**

for

STATE

FEDERAL

INDUSTRIAL

and

COMMERCIAL  
CONSTRUCTION

**AMES, IOWA**

**Globe Machinery & Supply Co.**

East 1st & Court  
DES MOINES, IOWA

**DISTRIBUTORS FOR**

Milorganite Fertilizer  
Ra-Pid-Gro Liquid Fertilizer  
Armour's Vertagreen, 10-8-6, 5-10-5  
Swift's Golden Vigoro, Regular  
Vigoro and Instant Vigoro  
Toro Mowers  
West Point Aerifiers  
Buckner Travelling Sprinklers  
Mills Plastic Water Pipe  
Dow Weed Killers  
Geigy and Mackwin Insecticides  
Nationally advertised Lawn &  
Garden Tools

**INSURANCE**

REPRESENTING

TRAVELERS OF HARTFORD  
AETNA FIRE

WALDO McDOWELL TOM McDOWELL  
AL STOLL

**INSURE IN SURE INSURANCE**

*McDowell's*

**CEdar 2-6401**

319 MAIN STREET  
**AMES, IOWA**

**REAL ESTATE**

● *The Spot for Homes*

WILLIAM B. VOGT

# Iowa State Cheer Squad



BACK ROW: LEFT TO RIGHT; MARTY WARD, LARRY AXELTON, SALLY SMITH.

FRONT ROW: LEFT TO RIGHT; NORMA TURNER, MARTHA POWERS, MARILYN BRIGHT, ELLEN POWERS, SALLY CHAMBERS.

THE STORE YOU'LL LIKE  
FOR MEN AND BOYS

*Ober's*

Downtown

Ames

## ECONOMY FORMS CORPORATION

Steel Forms for Concrete Construction  
For Your Concrete Forming Needs Use:

- 1—EFCO "LIFETIME" STEEL FORMS  
on a Purchase Basis
- 2—ECONOMY STEEL FORMS  
with experienced supervisory service  
on a Rental Basis
- 3—SPECIAL ECONOMY FORMS  
designed and manufactured to your  
Specifications

HOME OFFICE

DES MOINES, IOWA

## Dunlap's OLDSMOBILE - CADILLAC

SALES and SERVICE

Phone CE 2-4202

222 Duff Ave.

AMES, IOWA

## In Support of the CYCLONES

For 38 Years - Same Location  
SOUTH OF CAMPUS

## College Savings Bank

WEST AMES, IOWA

Total Resources over \$5,000,000

*Depository, Iowa State College Athletic Council  
Member F.D.I.C.*

## ZEIDLER

CONCRETE PRODUCTS

WATERLOO

C. A. BLUEDORN, Pres. & Gen. Mgr.

CLEAR LAKE

A. W. SCHULTZ, Mgr.

## Ames Daily Tribune

A "Hometown" Newspaper  
for Ames and Story County  
people

## IOWA STATE 1955 FOOTBALL SCHEDULE

### Games at Home

Sept. 17	Denver	-----	\$3.50
Oct. 15	Missouri	-----	3.50
Oct. 22	Kansas State	-----	3.50
	(Homecoming)		
Nov. 5	Nebraska (Parents Day)	---	3.50

### Games Away

Oct. 1	Illinois	-----	\$3.60
Oct. 8	Kansas	-----	3.50
Oct. 29	Drake	-----	3.00
Nov. 12	Oklahoma	-----	3.50
Nov. 19	Colorado	-----	3.50

Tickets for any of the above games available, by writing to

**ATHLETIC TICKET OFFICE**  
Iowa State College, Ames, Iowa

# • ❖ C Y C L O N E S ❖ •



**DICK CALLAHAN**  
LaSalle, Ill.  
Steve Oracko  
Physical Education



**LYLE CARLSON**  
Laurens  
Dale Hayes  
Agricultural Education



**BOB CLARK**  
Winterset  
Charles McGaffin  
Industrial Administration



**JACK DEE**  
Downers Grove, Ill.  
John Stahl  
Industrial Administration



**GENE DeKOSTER**  
Spencer  
Bucky Wolter  
Geology



**CLIFF DEUPREE**  
Riverdale, Ill.  
Tiny Huddleston  
Engineering



**JERRY DONOHUE**  
Des Moines  
Paul Schramm  
Science



**BOB ERICKSON**  
Estherville  
Harold Hoskins  
Electrical Engineering



**JACK FALTER**  
Elmhurst, Ill.  
Maurice Stamps  
Animal Husbandry

# Iowa State College Football Roster for 1955

## ENDS

81	Jerry Bartelt	208	6-3	20	Soph	Baltimore, Md.
83	Fred Bunch	180	6-0	19	Soph	Vandalia, Ill.
84	Bob Clark*	195	6-4	21	Senior	Winterset
21	Bob Erickson	165	6-0	21	Junior	Estherville
47	Bill Fogarty	182	5-11	19	Soph	Des Moines
86	Harold Potts*	170	6-0	21	Senior	Davenport
7	Frank Powell	180	6-1	19	Soph	Omaha, Neb.
87	John Scheldrup	214	6-4	19	Soph	Oak Park, Ill.
89	Ron Schwartz	190	6-1	21	Soph	Skokie, Ill.
82	Jim Stuelke*	190	6-3	19	Junior	Council Bluffs
85	Co-capt. Mell Wostoupal**	202	6-3	21	Senior	West Point, Neb.

## TACKLES

78	Skip Allison	192	6-1	19	Soph	Homewood, Ill.
69	Dick Callahan*	205	6-0	21	Senior	LaSalle, Ill.
92	Lyle Carlson	203	6-0	19	Soph	Laurens
74	Roger Harrington	200	6-1	21	Junior	Eldora
71	Co-capt. Jim McCaulley*	215	6-2	24	Senior	Lake City
93	Leo Olsen	222	6-1	21	Junior	Washington
70	Ed Roberts	236	6-5	19	Soph	West Liberty
72	Oliver Sparks	223	6-1	22	Junior	New Market
75	Ray Tweeten*	206	6-3	20	Junior	Washington
73	Jack Tyson	208	6-2	20	Soph	Highland Park, Ill.
95	Ralph Yoder	211	5-11	24	Soph	Ollie

## GUARDS

64	Bob Bird	194	5-11	18	Soph	Waterloo
61	Ron Bredeson	198	5-11	19	Junior	Lake Mills
63	George Buckman	195	5-11	21	Senior	Spring Valley, Ill.
51	Rich George	200	5-11	20	Junior	Bellwood, Ill.
67	Rex Giuntoli	203	5-9	19	Soph	Chicago, Ill.
60	Jon Haverman	198	6-1	19	Soph	Toledo, Ohio
52	Jim Lyons*	197	6-2	21	Senior	Peru, Ill.
66	Bob Meyer	186	6-0	20	Soph	Evanston, Ill.
62	John Murphy*	214	5-9	20	Junior	Des Moines
68	Jack Tilles	193	6-0	18	Soph	Mount Prospect, Ill.
65	Bob Wellendorf*	185	6-0	23	Senior	Davenport

## CENTERS

53	Grant Blaney	200	6-0	21	Soph	Chicago, Ill.
54	Jack Falter	200	6-2	19	Soph	Elmhurst, Ill.
55	Chuck Muelhaupt	203	6-3	19	Junior	Des Moines

## QUARTERBACKS

6	John Breckenridge*	180	5-10	21	Junior	Charles City
8	Jerry Finley*	180	6-1	21	Senior	Wilson, Okla.
4	Mike Reeves	177	6-0	21	Soph	Chicago, Ill.
5	Al Rickert	199	6-2	19	Soph	Oak Park, Ill.

## HALFBACKS

44	Bruce Alexander**	177	5-11	21	Senior	Waterloo
42	Jack Dee	170	5-10	20	Soph	Downers Grove, Ill.
25	Cliff Deupree	178	6-2	19	Soph	Riverdale, Ill.
43	Chuck Gates	171	5-11	22	Junior	Downers Grove, Ill.
22	Jack Hansen	180	6-0	19	Soph	Omaha, Neb.
27	Gary Lutz**	156	5-8	22	Senior	Osceola
23	Hank Philmon**	163	5-9	22	Senior	Davenport
40	Fred Rippel	164	5-10	23	Soph	Galesburg, Ill.
2	Don Rogers	178	5-10	19	Soph	Muscatine
46	Erwin Sadanowicz	168	5-10	19	Soph	Wyandotte, Mich.
26	Brooks Young	162	6-0	21	Soph	Harvey, Ill.

## FULLBACKS

32	Gene DeKoster	196	6-0	19	Soph	Spencer
34	Jerry Donohue	186	6-1	19	Soph	Des Moines
36	Bill Jensen*	185	5-11	22	Soph	Moline, Ill.
35	Donn Lorenzen*	204	6-2	21	Senior	Reinbeck
41	John Schweickert	170	5-10	21	Senior	Peru, Ill.
24	Marv Walter	190	6-0	20	Soph	Northboro

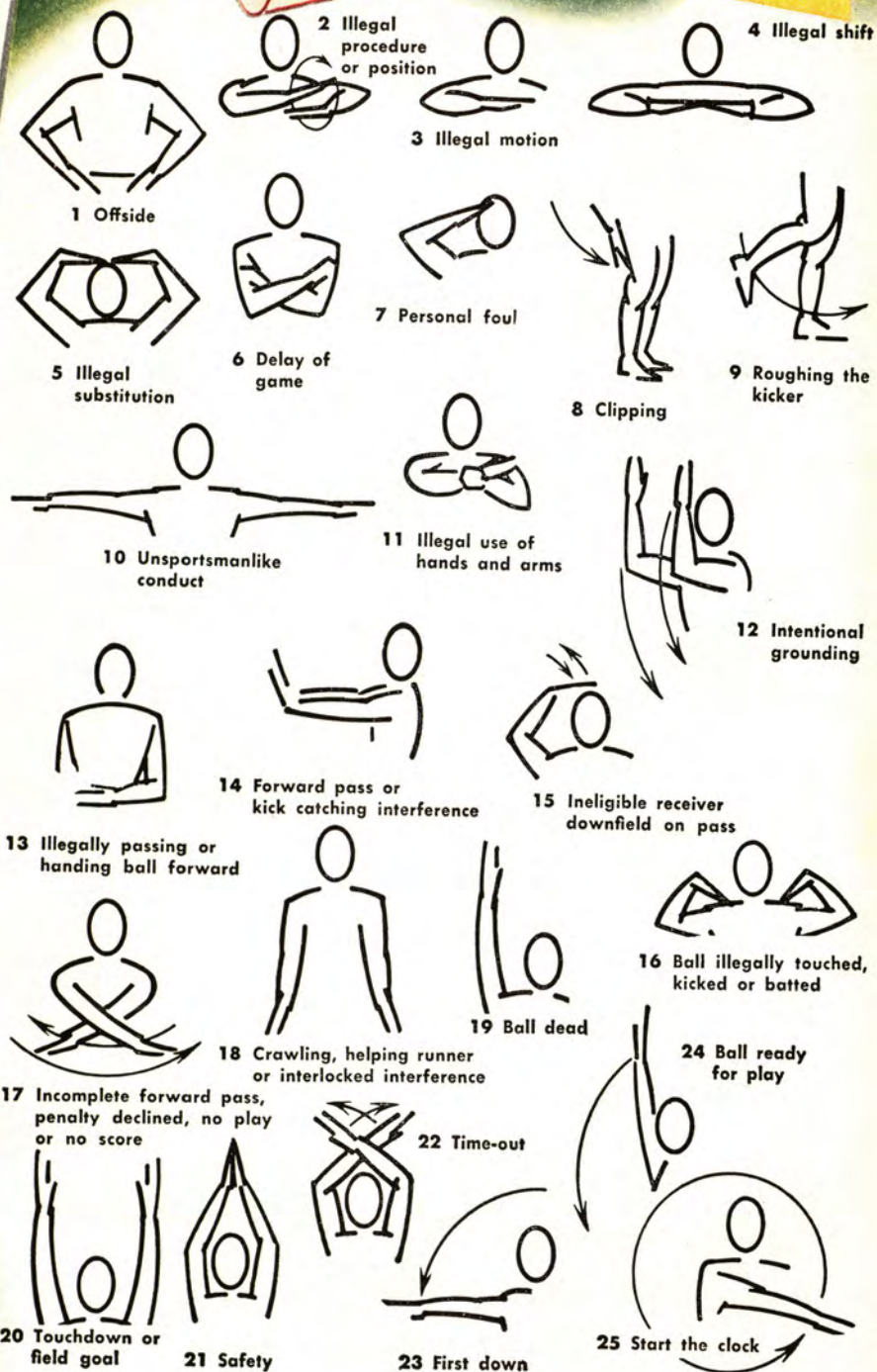
\*Lettermen

DRINK

*Coca-Cola*

IN BOTTLES

Delicious and Refreshing



COPYRIGHT 1955, THE COCA-COLA COMPANY

SEE BACK OF FOLLOWING PAGE FOR PENALTIES

MARSHALLTOWN COCA-COLA BOTTLING CO., MARSHALLTOWN, IOWA

## IOWA STATE

### PROBABLE STARTING LINE-UP

No.	Name	Position
85	MELL WOSTOUPAL	LE
75	RAY TWEETEN	LT
66	BOB MEYER	LG
55	CHUCK MUELHAUPT	C
68	JACK TILLES	RG
72	OLIVER SPARKS	RT
86	HAROLD POTTS	RE
5	AL RICKERT	QB
22	JACK HANSEN	LH
43	CHUCK GATES	RH
36	BILL JENSEN	FB

### THE CYCLONE SQUAD

2 Rogers, RH	60 Haverman, G
4 Reeves, QB	61 Bredeson, G
5 Rickert, QB	62 Murphy, G
6 Breckenridge, QB	63 Buckman, G
7 Powell, E	64 Bird, G
8 Finley, QB	65 Wellendorf, G
21 Erickson, E	66 Meyer, G
22 Hansen, LH	67 Giuntoli, G
23 Philmon, LH	68 Tilles, G
24 Walter, FB	69 Callahan, T
25 Deupree, LH	70 Roberts, T
26 Young, LH	71 McCaulley, T
27 Lutz, LH	72 Sparks, T
32 DeKoster, FB	73 Tyson, T
34 Donohue, FB	74 Harrington, T
35 Lorenzen, FB	75 Tweeten, T
36 Jensen, FB	78 Allison, T
40 Rippel, RH	81 Bartelt, E
41 Schweickert, FB	82 Stuelke, E
42 Dee, RH	83 Bunch, E
43 Gates, RH	84 Clark, E
44 Alexander, RH	85 Wostoupal, E
46 Sadanowicz, RH	86 Potts, E
47 Fogarty, E	87 Scheldrup, E
51 George, G	89 Schwartz, E
52 Lyons, G	92 Carlson, T
53 Blaney, C	93 Olsen, T
54 Falter, C	95 Yoder, T
55 Muelhaupt, C	



## Only Chesterfield is Made the Modern Way—with AccuRay

Today—discover for yourself what modern science can do to increase your cigarette enjoyment! Try Chesterfield—the cigarette made the modern way...measurably smoother...cooler...best for you!



**THIS IS IT!** L&M has the purest and best filter your lips ever touched... the pure, white Miracle Tip. What's more, L&M gives you a rich, good tasting, and fully satisfying smoke. No wonder smokers everywhere say, "L&M's got everything!"

**L&M**—America's *Best* Filter Cigarette!

## MISSOURI

### PROBABLE STARTING LINE-UP

No.	Name	Position
82	BILL CRAIG	LE
76	FRANK CZAPLA	LT
67	JIM MARTIN	LG
51	TONY KARAKAS	C
63	BOB LEE	RG
70	AL PORTNEY	RT
80	HAROLD BURNINE	RE
22	JIMMY HUNTER	QB
21	JERRY CURRIGHT	LH
45	JOE WYNN	RH
36	GENE ROLL	FB

### THE TIGER SQUAD

12 Stuber, QB	54 Osterloh, C
14 Doane, QB	56 Schulz, C
15 Griep, QB	61 Roberts, E
17 Smith, QB	62 H. Hall, T
21 Curtright, LH	63 Lee, G
22 Hunter, QB	65 Browning, G
26 Stringer, LH	66 Mehrer, G
27 Wright, LH	67 Martin, G
28 Powell, HB	68 Anastas, G
33 Fischer, FB	69 Jensen, G
34 Cramer, RH	70 Portney, T
36 Roll, FB	73 Hopkins, T
37 Toney, FB	74 Pendleton, T
40 Rice, RH	75 Campbell, G
41 Stout, RH	76 Czapl, T
43 Curley, RH	79 Barrickman, T
45 Wynn, RH	80 Burnine, E
46 Childress, LH	82 Craig, E
47 Hankins, HB	83 W. McKinney, E
49 Springer, FB	84 Plumb, E
51 Karakas, C	87 Alburtis, E
53 M. Johnson, T	88 Piskulich, E

### OFFICIALS

Referee—Ron Gibbs (St. Thomas)  
 Umpire—M. G. Volz (Nebraska)  
 Head Linesman—Ben Beckerman (Iowa)  
 Field Judge—Bat Shunatona (Oklahoma)

PURE WHITE





## PENALTIES

### LOSS OF FIVE YARDS

1. Taking more than five times out during either half (except for replacement of injured player).
2. Illegal delay of game.
3. Failure to complete substitution before play starts.
4. Violation of kickoff formation.
5. Player out of bounds when scrimmage begins.
6. Putting ball in play before Referee signals "Ready-for-play".
7. Failure to maintain proper alignment of offensive team when ball is snapped. Also, backfield man illegally in motion.
8. Offside by either team or encroachment on neutral zone.
9. Attempt to draw opponents offside.
10. Crawling by runner.
11. Illegal forward pass (includes intentional grounding of forward pass). Also loss of down.
12. Taking more than two steps after Fair Catch is made.
13. Player on line receiving snap.
14. Any violation of the scrimmage formation.

### LOSS OF FIFTEEN YARDS

15. Team not ready to play at scheduled time.
16. Violation of rules during intermission.
17. Illegal return of suspended player.
18. Interference by member of offensive team with defensive player making pass interception. (Also loss of down.)
19. Interference with opportunity of player of receiving team to catch a kick.
20. Illegal use of hands or arms by offensive player.
21. Tackling or blocking defensive player who has made fair catch.
22. Roughing the kicker.
23. Piling up, hurdling, clipping.
24. Tackling player out of bounds, or running into player obviously out of play.
25. Coaching from sidelines.
26. Failure to stop one full second following shift.
27. Defensive holding.
28. Invalid Signal for Fair Catch.

### OTHER PENALTIES

29. Striking an opponent with fist, forearm, elbow or locked hands, kicking or kneeling — Mandatory disqualification of offending player plus loss of fifteen yards.
30. Foul within the one yard line—half the distance to the goal.
31. Interference by defensive team on forward pass—passing team's ball at spot of foul.
32. Forward pass being touched by ineligible receiver beyond the line of scrimmage—loss of fifteen yards from spot of preceding down and loss of a down.
33. Illegal touching of kicked ball within opponent's ten yard line — touchback.
34. Flagrantly rough play or unsportsmanlike conduct — Mandatory disqualification plus loss of fifteen yards.
35. Eligible pass receiver who goes out of bounds and later touches a forward pass — loss of down.

SEE BACK OF PRECEDING PAGE FOR OFFICIALS SIGNALS

DRINK

*Coca-Cola*

IN BOTTLES

"COKE" IS A REGISTERED TRADE MARK

MARSHALLTOWN COCA-COLA BOTTLING CO., MARSHALLTOWN, IOWA

# University of Missouri Football Roster for 1955

## ENDS

87	Bennie Alburtis	190	6-2	19	Soph	Harrisonville
80	Harold Burnine**	184	6-2	23	Senior	Richmond
82	William Craig*	195	6-1	20	Junior	Excelsior Springs
85	Irving Hammer	193	5-10	20	Junior	Kansas City (Cent.)
83	Bill R. McKinney	190	6-1	20	Soph	St. Joseph (Lfy.)
88	John Piskulich*	195	6-1	22	Senior	St. Louis (Bmt.)
84	Larry Plumb	168	6-0	19	Soph	Chillicothe

## TACKLES

79	Guy Barrickman*	216	5-11	20	Junior	Jefferson City
76	Frank Czapla	221	6-3	19	Soph	St. Louis (Mck'y)
73	Don Hopkins	204	6-1	19	Soph	Lee's Summit
53	Mervin Johnson	213	6-0	19	Soph	King City
74	Charles Pendleton	201	6-1	22	Senior	St. Louis (Cent.)
70	Alvin Portney**	220	6-1	21	Senior	University City
78	Howard Robertson*	235	6-3	21	Junior	Granite City, Ill.

## GUARDS

68	George Anastas	189	5-11	22	Senior	St. Louis (Sol.-Blt.)
65	Paul Browning	204	6-0	20	Junior	East St. Louis
75	Gene Campbell*	230	6-3	20	Junior	East St. Louis
60	Charles Hall	195	6-1	21	Senior	Mexico
62	Howard Hall	198	6-0	20	Junior	Mexico
69	Julius Jensen	105	6-1	19	Soph	Kansas City (Cent.)
63	Robert Lee	225	6-1	20	Soph	Columbia
67	James Martin*	209	5-10	21	Junior	Columbia
66	Charles Mehrer*	228	6-3	19	Junior	Kansas City (Hogan)

## CENTERS

57	Keith Gerst	193	6-2	19	Soph	St. Louis (Bmt.)
51	Tony Karakas**	181	6-0	22	Senior	St. Louis (Soldan)
54	Carl Osterloh*	212	6-1	19	Junior	Clayton
61	Terry Roberts**	210	6-2	22	Senior	Carthage
56	Ralph Schulz	197	5-11	20	Junior	Sedalia

## QUARTERBACKS

14	David Doane	186	6-0	21	Junior	Joplin
15	William Griep	191	6-0	20	Junior	Macon
22	Jimmy Hunter*	191	6-0	19	Junior	Webb City
17	Gerry Smith	158	5-9	21	Senior	Gower
12	Richard Stuber	182	6-0	21	Junior	Piedmont

## LEFT HALFBACKS

46	Dudley Childress	167	5-11	20	Senior	Harrisonville
21	Jerry Curtright	181	5-11	19	Soph	Woodstock, Ill.
26	Sonny Stringer*	161	6-0	20	Junior	Willow Springs
27	Forrest Wright	174	6-1	20	Soph	Harrisonville
28	John Powell	174	5-9	21	Senior	Kansas City (SW)

## RIGHT HALFBACKS

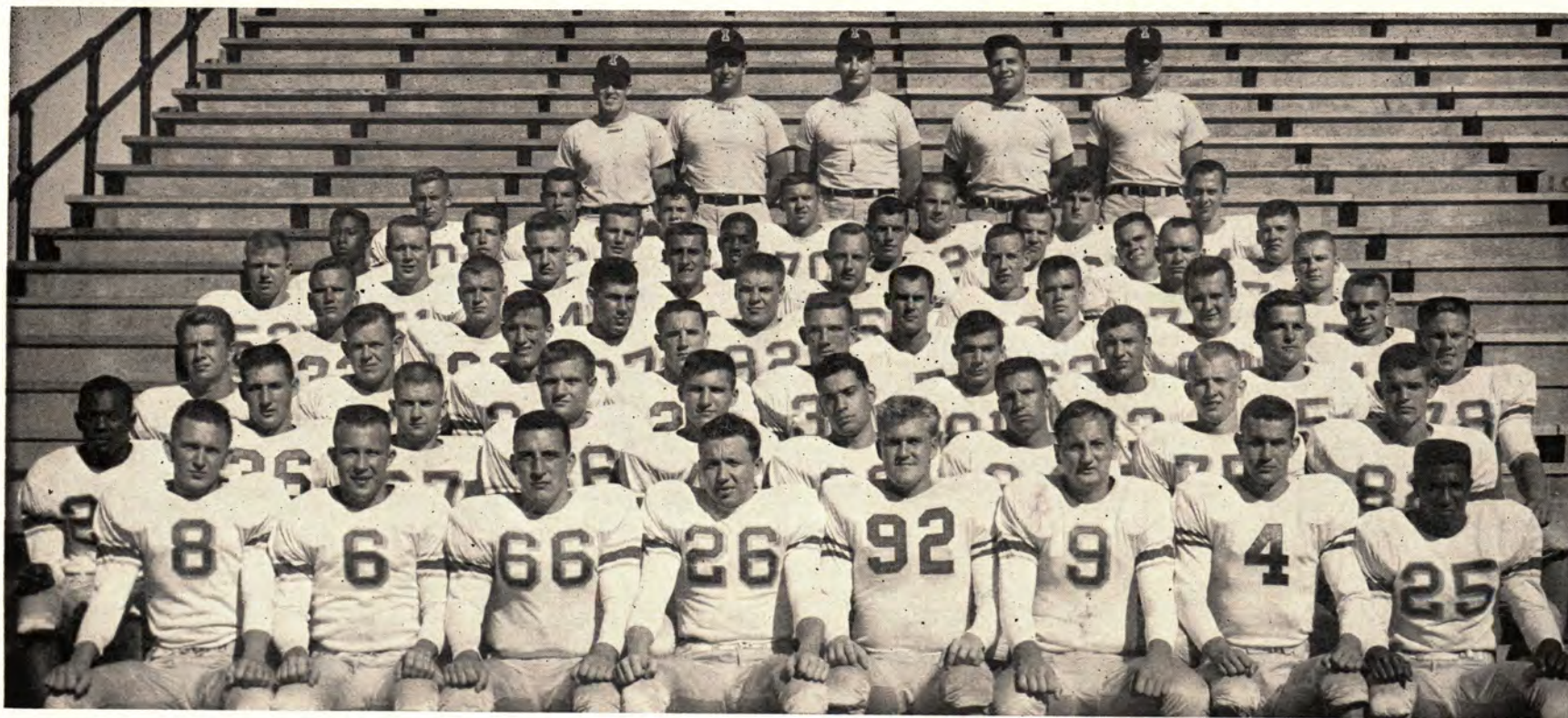
34	George Cramer	189	5-8	20	Junior	Neosho
47	Jay Hankins	162	5-8	20	Junior	Overland
20	Billy Mills	170	5-10	18	Soph	Columbia
40	Bill Rice*	161	5-8	19	Junior	East St. Louis
45	Carl (Joe) Wynn	192	5-11	19	Soph	Raytown
43	Bill Curley	182	6-1	20	Junior	Nevada

## FULLBACKS

33	Pat Fischer	208	6-1	20	Junior	Springfield
36	Gene Roll*	199	6-2	20	Junior	Harrisonville
49	Leslie Springer	178	5-11	20	Soph	Carrollton
37	Gary Toney	193	5-11	19	Junior	Coffeyville, Kans.

\*Lettermen

# 1955 Cyclone Football Squad



Front row—Jerry Finley, John Breckenridge, Rex Giuntoli, Lee Spence, Jerry Bartelt, Al Rickert, Charles Latting, Hank Philmon. Second row—Brooks Young, Jerry Donohue, Gary Lutz, Donn Lorenzen, Bruce Alexander, George Buckman, B'll Jensen, Ray Tweeten, Jim Stuelke. Third row—Ron Bredeson, Ralph Yoder, Cliff Deupree, Bill Fogarty, Marv Walter, Frank Powell, Fred Bunch, Chuck Muelhaupt, Ed Roberts. Fourth row—Gene DeKoster, John Allison, Jack Scheldrup, Oliver Sparks, Jack Hansen, Bob Bird, Dick Callahan, Fred Rippel. Fifth row—Jon Haverman, Grant Blaney, Jack Falter, Ron Schwartz, Mell Wostoupal, Jim Lyons, Jim McCaulley, John Schweickert. Sixth row—Harold Potts, Bob Erickson, Don Rogers, Mike Reeves, Bob Clark, Rich George, John Murphy, Lyle Carlson. Seventh row—Jack Dee, Chuck Gates, Erwin Sadanowicz, Roger Harrington, Leo Olson, Bob Meyer, Jack Tilles. Back row—Arch Steel, Jerry Carle, Vince DiFrancesca, Alex Agase, Ken Hulslander.

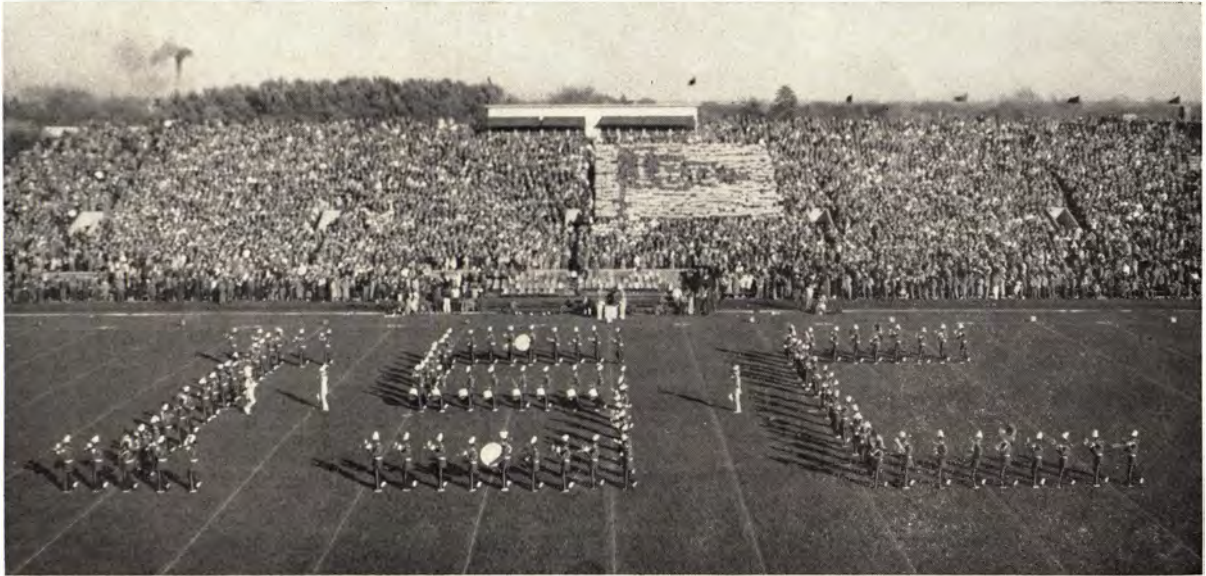
*"Your Friendly Main Street Bank"*

## UNION STORY TRUST AND SAVINGS BANK

MAIN AT DOUGLAS - - AMES' BANKING CORNER SINCE 1881

DEPOSITS INSURED TO \$10,000 FOR EACH DEPOSITOR BY FEDERAL DEPOSIT INSURANCE CORPORATION

# Other Parts of the TEAM



Just as it takes more than one man to make a football team it takes more than the actual 11 players to make the "Cyclone" team here each Saturday afternoon.

The most important part of the "team" is pictured elsewhere in this book—the players and coaches. Here on this page and on the page devoted to the cheer leaders we'd like to call attention to other members of the team.

Iowa State's marching band—a winner every game—will outmaneuver, out play and out perform any band it meets, year in and year out. Today it ranks right with a handful of college bands as the best in and on the field.

Directed by Frank Piersol, the Iowa State marching band is a vital part of the Cyclone football picture.



DALE WILLIAMS

Just as important in its field is the cheer squad, those prancing, jumping youngsters who scream and yell for and with the student body as it does its part to get the victory bell going.

Unnoticed on the home field is still another part of the "team". Station WOI and the Cyclone Sports Network bring all Iowa State games to fans who can't be on hand. On the road it means the "picture" comes back home for the fans.

For the twelfth year the voice that brings the football to the Cyclone Sports Network will be Dale Williams. A graduate of Iowa State and its most rabid sports follower, Dale presents an accurate, detailed picture of the action taking place on the field.



FRANK PIERSOL

# • ❖ C Y C L O N E S ❖ •



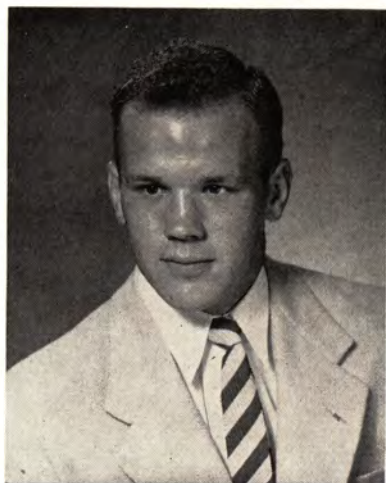
**JERRY FINLEY**  
Wilson, Okla.  
Ernest Dry  
Industrial Administration



**BILL FOGARTY**  
Des Moines  
Paul Schramm  
Industrial Administration



**CHARLES GATES**  
Downers Grove, Ill.  
John Stahl  
Engineering



**RICH GEORGE**  
Bellwood, Ill.  
Andy Pupils  
Aeronautical Engineering



**REX GIUNTOLI**  
Chicago, Ill.  
Al Lesniak  
Physical Education



**JACK HANSEN**  
Omaha, Neb.  
Bob Anderson  
Science



**ROGER HARRINGTON**  
Eldora  
Al Hardar - Joe McLaren  
Physical Education



**JOHN HAVERMAN**  
Toledo, Ohio  
Bob Harding  
Architectural Engineering

# • ❖ CYCLONES ❖ •



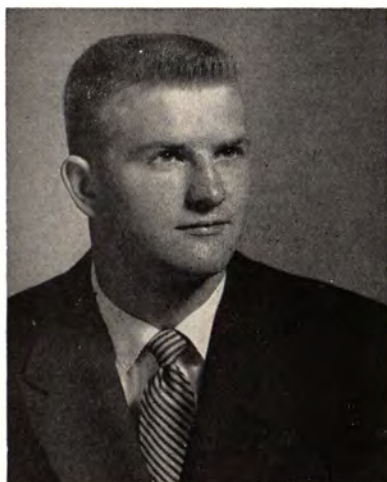
**DARYL HOBBS**  
Fort Dodge  
Manager



**BILL JENSEN**  
Moline, Ill.  
Sam Drake  
Physical Education



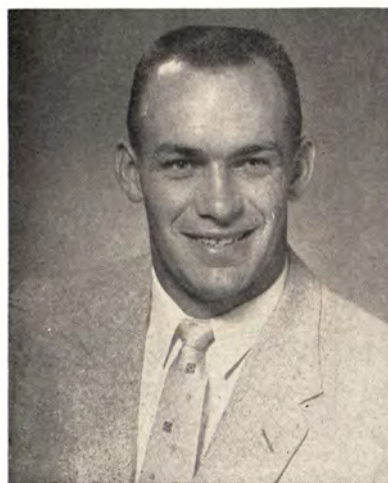
**DONN LORENZEN**  
Reinbeck  
Max Liggett - Bud Andrus  
Farm Operation



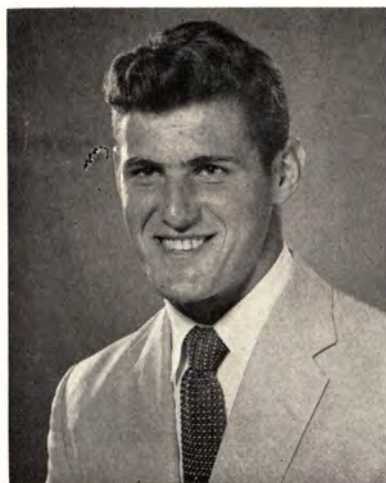
**GARY LUTZ**  
Osceola  
Gene Moylan  
Animal Husbandry



**JIM LYONS**  
Peru, Ill.  
Steve Oracko  
Agricultural Administration



**JIM McCAULEY**  
Lake City  
Doyle Filloon  
Veterinary Medicine



**BOB MEYER**  
Evanston, Ill.  
Max Burnell  
Industrial Administration



**CHARLES MUELHAUPT**  
Des Moines  
Paul Schramm  
Mechanical Engineering

# *Ames Merchants*

## **CYCLONE BOOSTERS**

**Ames Daily Tribune**

**Ames Laundry**

**Ames Reliable Products Co.**

**Ames Stationers**

**Ames Trust and Savings Bank**

**J. D. Armstrong Heavy Hauling Inc.**

**Armstrong Tractor & Truck Company  
Inc.**

**Bates Jewelers**

**Ben Franklin Store**

**Berck Clothing Co.**

**Campus Drug Co.**

**Carter Press**

**Christensen Appliance Store**

**Paul Coe Flowers & Gifts**

**College Savings Bank**

**Dunlap Motor Co.**

**Eschbach Music House**

**General Filter Co.**

**S. Hanson Lumber Co.**

**Hotel Sheldon-Munn**

**Irvine Paint and Wall Paper Store**

**Jameson's**

**Lindquist Cleaners**

**L-Way Cafe**

**McDowell's Real Estate - Insurance**

**Motor Sales & Service**

**H. L. Munn Lumber Company**

**Nims Sportsman's**

**Ober's Store for Men and Boys**

**Palmer Plumbing Co.**

**Rainbow Coffee Shop**

**Rushing Super Valu**

**Skeie Motor Company**

**Stephenson's Drygoods**

**Student Supply Store**

**The Sport Shop**

**James Thompson & Sons—Contractors**

**Tom's Grill**

**Union Story Trust and Savings Bank**

**Weaver Jewelers**

# **TIGERS**



**JIM HUNTER**  
 Quarterback



**TONY KARAKAS**  
 Center



**BOB LEE**  
 Right Guard



**BILL McKINNEY**  
 Left End



**JIM MARTIN**  
 Left Guard



**CHUCK MEHRER**  
 Right Guard



**CARL OSTERLOH**  
 Center



**AL PORTNEY**  
 Right Tackle

# ~ **TIGERS** ~



**JOHN POWELL**  
 Halfback



**BILL RICE**  
 Right Halfback



**TERRY ROBERTS**  
 Right End



**GENE ROLL**  
 Fullback



**RALPH SCHULZ**  
 Center



**SONNY STRINGER**  
 Left Halfback



**DICK STUBER**  
 Quarterback



**JOE WYNN**  
 Right Halfback

# . ❖ C Y C L O N E S ❖ .



**JOHN MURPHY**  
Des Moines  
George Falk  
Industrial Administration



**HENRY PHILMON**  
Davenport  
A. J. Stolfa  
Veterinary Medicine



**HAROLD POTTS**  
Davenport  
A. J. Stolfa  
Industrial Administration



**FRANK POWELL**  
Omaha, Neb.  
Bob Anderson  
Physical Education



**MIKE REEVES**  
Chicago, Ill.  
Jim Brown  
Physical Education



**AL RICKERT**  
Oak Park, Ill.  
Bob Wehrli  
Industrial Administration



**FRED RIPPEL**  
Galesburg, Ill.  
C. C. Van Dyke  
Physical Education



**ED ROBERTS**  
West Liberty  
Carl Ellermier  
Physical Education

★ HIGHWAYS

★ STREETS

★ BRIDGES

★ AIRPORTS

★ AIRPORT FACILITIES



## GREEN CONSTRUCTION CO.

Phone 4-7251

Des Moines, Iowa

## An Iowa Company

... Located at the Home of Iowa State.

... Doing Business Exclusively in the State of Iowa.

... Serving the Farm People of Iowa.

... Supporting Iowa Activities.

## AMES RELIABLE PRODUCTS CO.

SUPPLEMENTARY FEEDS

Designed especially for Iowa Feeders



# HOME

## FRIDAY NIGHTS

BY  
**GREYHOUND**

### Save by Greyhound!

DES MOINES	\$ .90
OMAHA	\$3.60
CEDAR RAPIDS	\$2.60
DAVENPORT	\$4.55
WATERLOO	\$2.30
CHICAGO	\$7.35

plus tax

Frequent service makes it easy to *leave early—return late!*

Ask about the low cost of *chartering* a Greyhound to take your gang to out-of-town football and basketball games, too!

424 Main  
Phone CE 2-2404

**GREYHOUND**



## ARMSTRONG CO'S

SALES



SERVICE

**ARMSTRONG TRACTOR  
and  
TRUCK CO.**

Phone CEdar 2-4155

**J. D. ARMSTRONG CO.  
CONSTRUCTION**

**J. D. ARMSTRONG  
HEAVY HAULING**

Ames, Iowa

Phone CEdar 2-4605

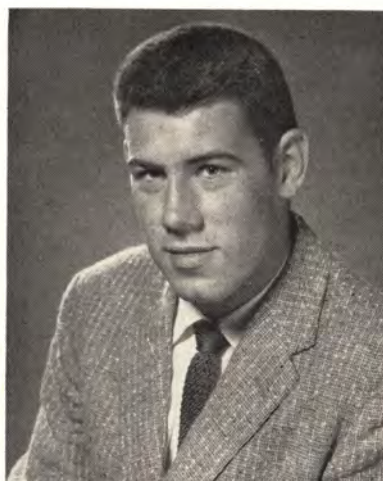
# . ❖ CYCLONES ❖ .



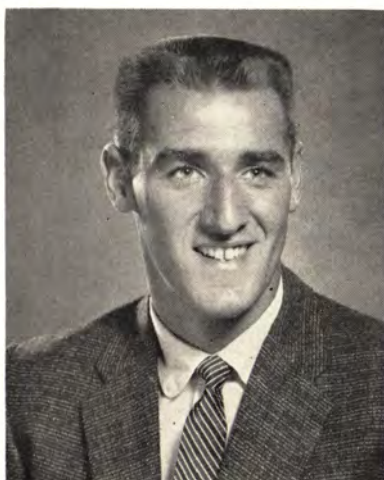
**DON ROGERS**  
Muscatine  
Jim Maas  
Forestry



**ERWIN SADANOWICZ**  
Wyandotte, Mich.  
Dick Hoffens  
Physical Education



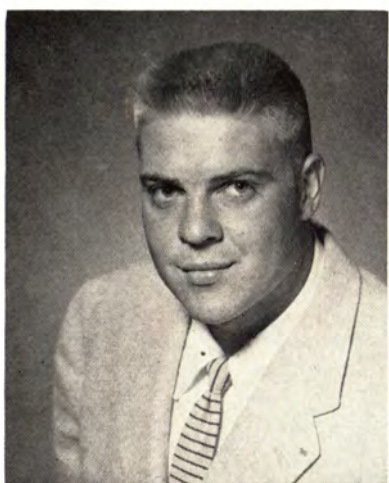
**JOHN SCHELDROP**  
Oak Park, Ill.  
Bob Wehrli  
Physical Education



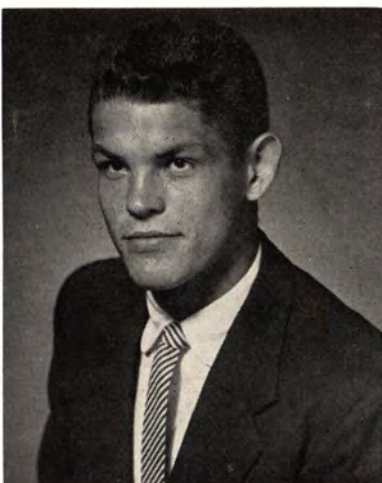
**RON SCHWARTZ**  
Skokie, Ill.  
Elmer Sahlin  
Physical Education



**JOHN SCHWEICKERT**  
Peru, Ill.  
A. J. Nowack - Walt Tyler  
Industrial Administration



**OLIVER SPARKS**  
New Market  
Agronomy



**JIM STUELKE**  
Council Bluffs  
Vic Jennings  
Engineering



**JACK TILLES**  
Mount Prospect, Ill.  
Max Burnell  
Industrial Administration

# • ❖ CYCLONES ❖ •



**RAY TWEETEN**  
Washington  
Carl Paetz  
Dairy Industry



**JACK TYSON**  
Highland Park  
Don Burson  
Animal Husbandry



**MARVIN WALTER**  
Northboro  
Dale Hackett  
Aeronautical Engineering



**BOB WELLENDOFF**  
Davenport  
A. J. Stolfa  
Industrial Education



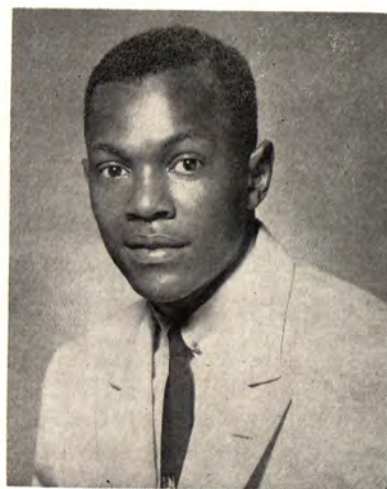
**BILL WOLFE**  
Odebolt  
Manager



**MELL WOSTOUPAL**  
West Point, Neb.  
Allison Bahe  
Veterinary Medicine



**RALPH YODER**  
Ollie  
Animal Husbandry



**BROOKS YOUNG**  
Harvey, Ill.  
Tiny Huddleston  
Science

# Now you can **STAND** as you tune!



**24-inch Winthrop Deluxe** (left), Maple finish, Model 24D679, \$500. **21-inch Compton** (front), Mahogany grained finish, Model 21T6115, \$229.95. **21-inch Glenwood Deluxe** (rear), Walnut finish, Model 21D652, \$349.50.

new

## **RCA VICTOR** TV with 3 kinds of "High-and-Easy" Tuning

TM&CS RADIO CORPORATION OF AMERICA

Now RCA Victor takes the fuss out of tuning! Each new RCA Victor TV has "High-and-Easy" tuning custom-designed to fit the kind of a cabinet it's on. It's part of RCA Victor's new "Un-Mechanical Look"—TV's first complete re-styling!

New RCA Victor table models have "Hidden-Panel" tuning. The dials are on top—and concealed by a panel when not in use!

**There's new "High-Side" Tuning**—the perfect way to tune a console. High—so you can dial standing up. Near the front—so you can watch the pic-

ture as you tune. Full-door consoles feature "Up-Front" tuning. All Deluxe models have another innovation—RCA Victor's illuminated "Front Window" VHF Channel Indicator!

**But tuning's only part of the big news!** New RCA Victor TV brings you big changes in performance and value, too! Come in today—see all the exciting new RCA Victor TV models!

**For UHF**—New High Speed UHF tuning covers 70 UHF channels in 2½ seconds! You can switch from VHF to UHF—or from UHF to VHF—and back again to a previously selected channel, without re-adjusting the fine tuning control. Optional, at RCA Victor's lowest price ever—\$25 extra.

Manufacturer's nationally advertised VHF list prices shown, subject to change. Slightly higher in far West and South.



**Ask about the exclusive RCA Victor Factory Service Contract**

At every price level from \$149.95 to \$500, RCA Victor gives you more for your money!

## SIDLES COMPANY

8 Seventh Street

DES MOINES, IOWA

Phone 4-0138



# LUCKIES TASTE BETTER

Cleaner, Fresher, Smoother!



**"IT'S  
TOASTED"**  
to taste  
better!