

# Hawkeye Cement

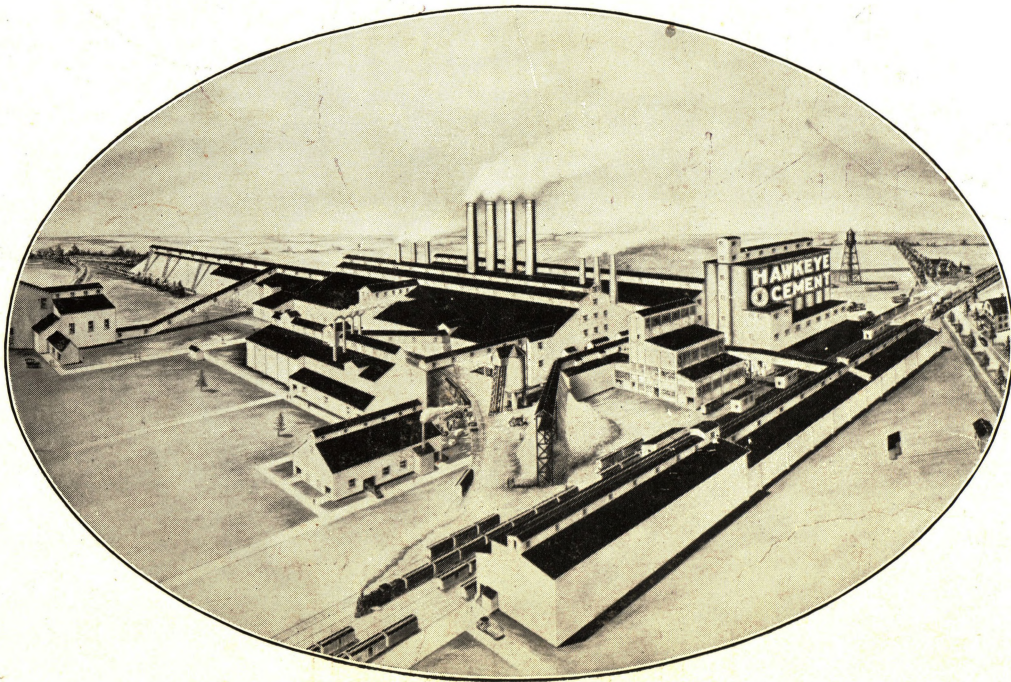
Was Used Throughout In Construction of

## Ames New Stadium

Because It Has Been Tried and Not Found Wanting  
**IT IS THE BEST BY TEST**

Stadium Built by Fred M. Eller, Ames, Iowa

Cement furnished through Spahn and Rose Lumber Co., Ames



## Hawkeye Portland Cement Company

DES MOINES, IOWA



# Paul Whiteman

(Himself)

## November 17, '25

at

IOWA STATE COLLEGE

Opening Number

### Artist Concert Series



#### OTHER CONCERTS

TOTI DAL MONTE, Soprano (Dec. 4th), IGNAZ FRIEDMAN with IOWA STATE SYMPHONY ORCHESTRA (Jan. 15th), THE DERESZKI SINGERS (Male Quartette) assisted by MILDRED DILLING, Harpist (Feb. 12th), LOUIS GRAVEURE, Belgian Baritone (March 5th)

Subscribers will be given preference in seat reservation. Send your name in or call 150 and leave it with the management.

#### SEASON TICKETS

\$2.50, \$3.00, \$4.00,  
\$5.00

### Paul Whiteman

And

His Orchestra

Single Admission  
\$3, \$2.50, \$2, \$1.50

Address inquiries  
to

TOLBERT MACRAE  
Ames, Iowa





FOR THRILLS IT'S A WOW. "THE LOST WORLD." OPENS HERE WEDNESDAY

## Autumn Styles

For the well dressed college man and woman  
Kuppenheimer Clothes for "Joe College"  
and  
Susan Smart Coats for Women

## The Fair

WORLD'S  
LARGEST  
CHAIN  
DEPARTMENT  
STORE  
ORGANIZATION

**J.C. Penney Co.**  
*A NATION-WIDE  
INSTITUTION-*  
INC. DEPARTMENT STORES

RELIABLE  
QUALITY  
GOODS  
ALWAYS  
AT LOWER  
PRICES

231 Main St., Ames, Iowa.

## Observation of a Friend

It is more than likely that you have been around a bit of late and have been impressed, as a friend was, that "a reduced price on some garment or article for the home is that price at which it should have been marked originally; that some people appear to mark their prices right only at sale time."

"The difference between the Penney Store and some stores," our friend said, "is that you mark your prices right all the time."

The Golden Rule is in force at this Store every day—not now and then!





# IOWA STATE COLLEGE 1925 FOOTBALL PROGRAM

---

Published by  
Iowa State College Athletic Department

---

Prepared by  
George Westcott, Craig Lawrence  
Ward Arnold





Courtesy

Service

Quality

**SPECIAL SALE  
ON MURRAY'S  
BOX CHOCOLATES**

**MALLORY'S  
LUNCHEONETTE**

R. G. MALLORY, PROP.

Phone 1534-W  
2500 Lincoln Way

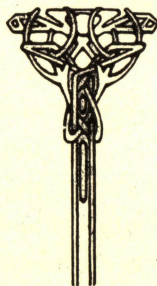
AMES, IOWA

**O'Neil's Velvet Ice  
Cream**

made in Ames and sold to students since 1914. Quality is the reason for our ever increasing business.

**O'Neil Dairy Co.**  
Phone 62

**IF IT IS DONE WITH HEAT  
YOU CAN DO IT BETTER  
WITH GAS**



**IOWA PUBLIC SERVICE**  
Phone 11      Masonic Building

**We Have It**

THE MOST NOVEL STUNT  
YOU'VE EVER SEEN  
THE RADIO AND GRID-  
GRAPH SCORECARD  
COME IN AND GET ONE

**Bullock's  
Hardware**



## ANOTHER STEP FORWARD

By F. D. PAINE  
(Chairman of the Athletic Council)

Today marks a second great stride in the development of intercollegiate athletics at Iowa State college. The first step was taken 10 years ago when the west section of the stadium was built. Today the college is dedicating the east section. The time is not long distant when the entire horseshoe of brick and concrete will stand on State field, an enduring expression of Cyclonic pep.

These exercises are being held today because of the combined efforts of alumni, faculty and friends of the school. Their continued efforts, inspired by a faith in the rising star of Iowa State gridiron success, will see the final brick laid and the final pennant raised.

Iowa State is especially glad to have Kansas university as a participant in the day's ceremony. October 10, 1925 will be an important date in the football history of Iowa State College. The quality of competition offered by Kansas university, which has never failed to call forth the last ounce of strength possessed by Iowa State, will give added significance to the day. The strong friendship which underlies the rivalry of the two schools gives the day a deeper meaning.

It is well to remember that the work is not done. Today's ceremony is not so much a dedication as a progress report. Added effort and a greater faith on the part of Iowa State college people will be called forth before the stadium is brought from the clouds down to State field.

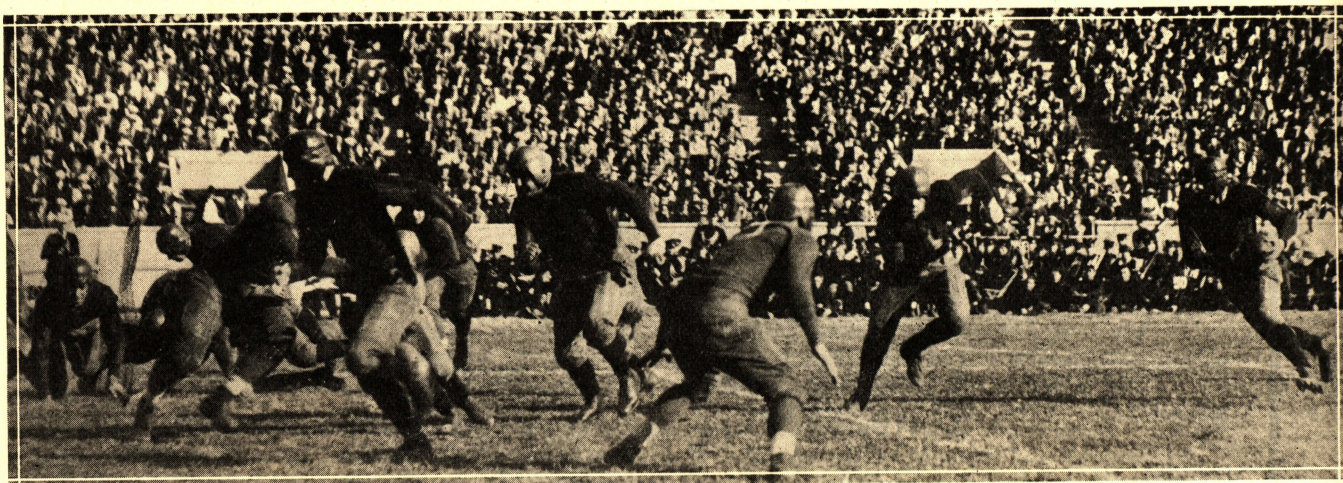
---

## FLAG RAISING

(Flags of the Mo. Valley Schools will be raised in the following order beginning at 2:10 P. M. The band will play each school song as its flag is raised)

1. Oklahoma A. and M.....Orange and Black
2. U. of Oklahoma.....Scarlet and Black
3. Washington U.....Red and Green
4. Kansas State Agricultural College.....Royal Purple and White
5. U. of Missouri.....Old Gold and Black
6. Grinnell College.....Scarlet and Black
7. Drake U.....Blue and White
8. U. of Nebraska.....Scarlet and Cream
9. U. of Kansas.....Red and Blue
10. Iowa State College.....Cardinal and Old Gold



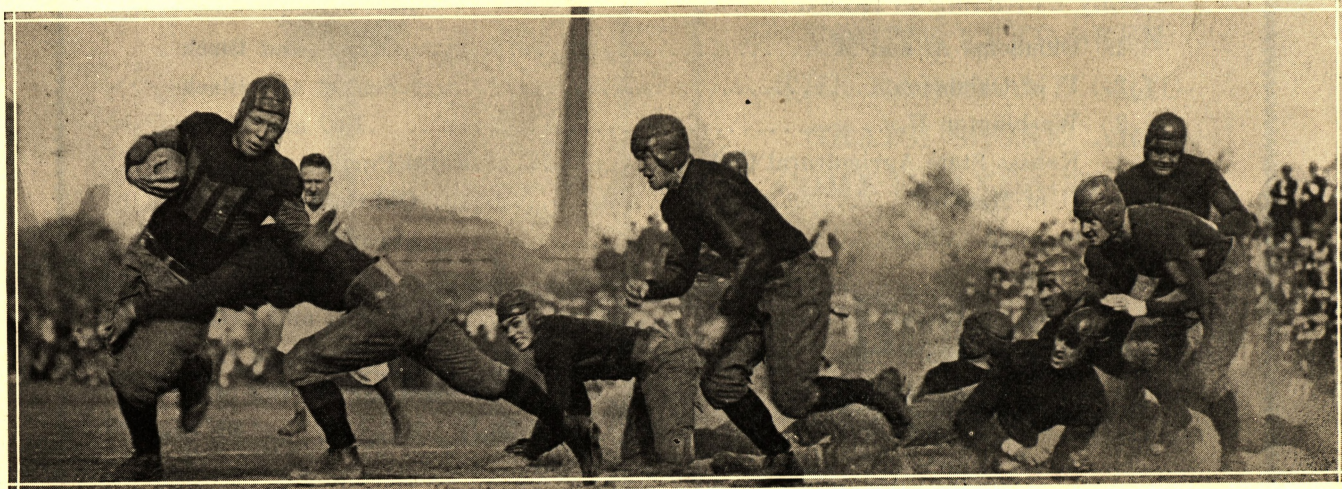


## AMES SONGS AND CHEERS

Fight Ames, fight,  
 Fight Ames, fight,  
 Fight for Ames with all your might  
 For the glory of old I. S. C.  
 Swing along,  
 Sing a song,  
 With a spirit good and strong,  
 And her fighters will win victory,  
 For it's fight, fight, fight,  
 For dear old I. S. C.  
 Winning great glory and fame,  
 And where ere we go,  
 They will always know,  
 That her fighters are fighting for Ames.

Moooo rah,  
 Moooo rah,  
 A-M-E-S  
 Rah, rah, rah, rah,  
 Clap, clap, clap, clap,  
 RAH

Tear 'em up Cyclones  
 Tear 'em up Cyclones  
 Tear 'em up Cyclones.





## CYCLONE CAPTAIN



Captain "Johnny" Behm, the diminutive member of the Ames Behms, is without question one of the leading quarterbacks in the Missouri Valley. However it is not only in the Valley that he is feared and respected. A Minneapolis scribe, writing up the Ames-Minnesota fracas of two years ago writes thus: "Not since the days of the peerless Aubrey Devine has such open field running been seen on Northrup Field." This is his last year of competition at Ames.



## Three More Home Games

Washington university .....October 24

Grinnell (homecoming) .....November 7

Kansas Aggies .....November 26  
(Thanksgiving Day)

Make your plans now to see the Cyclones meet these opponents.

The struggle for the Missouri Valley championship is on and Iowa State is in the thick of the fight.

Address applications for seats to

FOOTBALL TICKET MANAGER, IOWA STATE COLLEGE  
Ames, Iowa

## CRANFORD COFFEE SHOP

Congratulates Iowa State college on the dedication of the fine new additon to the stadium.  
After the game, we invite you to visit the Coffee Shop, where you may obtain the

**BEST OF FOOD WELL PREPARED AT POPULAR PRICES**

**PRIVATE ROOMS FOR BANQUETS**

Phone 1454-W

---

**SERVICE**

**QUALITY**

# Ames Laundry

Phone 47

"We Use Only Soft Water"



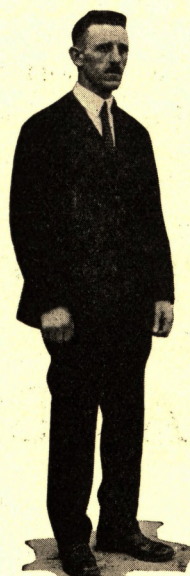
## Some Ames Coaches



BILL CHANDLER  
Basketball



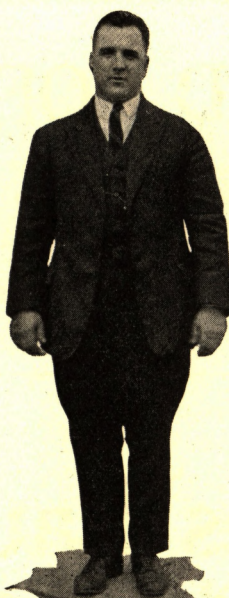
SAM WILLAMAN  
Football



JAKE DAUBERT  
Swimming



HUGO OTOPALIK  
Wrestling



FRANK WILLAMAN  
Freshmen



W. E. BEAN-  
BLOSSOM  
Cross Country



## Team Work

is an important factor in developing a strong football team. It is also an important factor in building a *strong, conservative bank*. The directors, officers and employees of this bank have given years of cooperative service in making this bank a satisfactory and safe place for you to do business.

## AMES NATIONAL BANK

Ames Trust and Savings Bank

## The Fort Dodge, Des Moines & Southern Railroad Urges More Co-operation

Our patrons, both passengers and shippers, are assured that this Company's service will be maintained at the highest peak of efficiency as we desire to merit your future patronage by continuing to be a dependable RAILROAD.

THE FORT DODGE LINE wants to make the business of all patrons and citizens it can serve as successful as may be, and I am sure that the public is anxious to help us in order that we, in turn, may help to obtain that result.

Two-Hour Service between AMES, FORT DODGE and DES MOINES, IOWA. Use this established service instead of your AUTOMOBILE. SAVE MONEY. TRAVEL THE SAFE WAY. Thru tickets sold to all parts of the country.

### "The Fort Dodge Line"

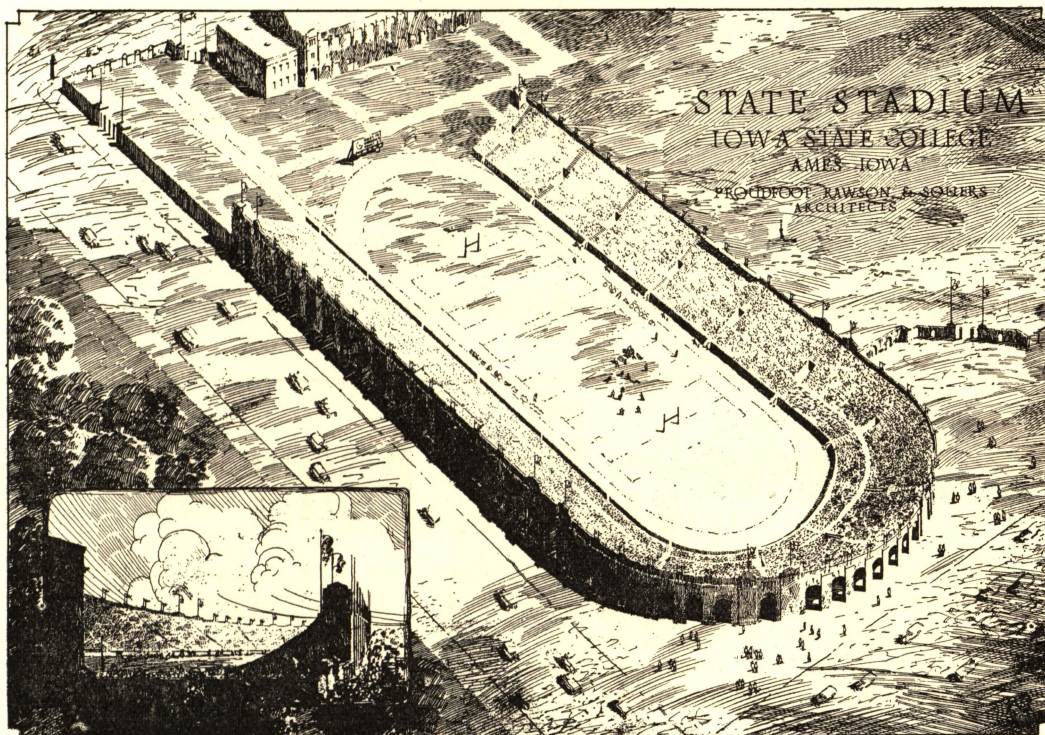
F. M. STEELE  
General Passenger Agent  
Boone, Iowa



## The Iowa State Stadium

Two steps are contemplated in solving Iowa State's problem. The ULTIMATE plan calls for a U-shaped stadium, incorporating the present concrete bleachers and stretching entirely around three sides of State field. When completed this stadium will seat 35,000. The accompanying cut shows the architects' plan for the completed structure.

The IMMEDIATE plan evolved last spring called for the construction of the section of the complete stadium along the east side of the field. This section now completed is of the same length as the west concrete bleachers, but has enough additional rows to seat 8,900.



### STADIUM CAPACITIES

1. West bleachers .....	5,600
2. Present addition .....	8,900
3. Extension of west bleachers .....	2,300
4. Final addition—Elliptical section .....	11,000
East tower section .....	3,050
West tower section .....	3,050



JUST DISCOVERED "THE LOST WORLD. WILL BE HERE WEEK

## CARR HARDWARE CO.

The Paint Store

Visit Our  
New Store

Phone 124

306 Main

## Fraternities and Sororities

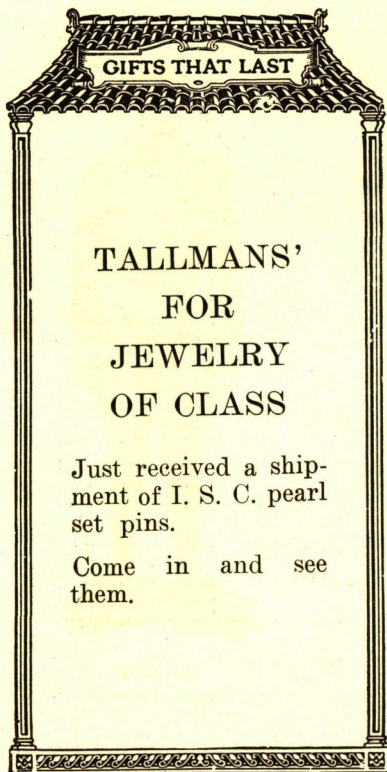
Everything Electric  
We have it

The Home of the Hoover

## Best Electric Company

130 Main St.

Ames, Iowa



## DON'T WORRY About Heat

Let us install a

**WILLIAMS'  
OIL-O-MATIC  
OIL BURNER**

Burns Cheap Fuel Oil

Heats Cheaper Than Coal

## W.G. Madison Co.

Agts.

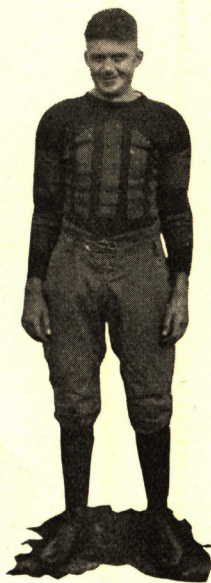


JUST DISCOVERED "THE LOST WORLD. WILL BE HERE WEEK

## Cyclones



GALBRAITH  
Left Guard



THORNBURG  
Center



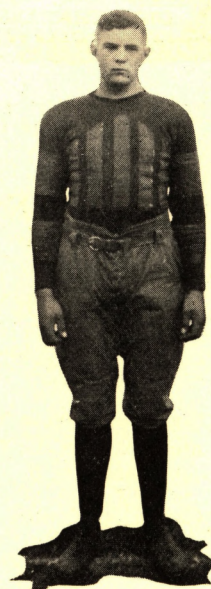
THOMAS  
Right Guard



RASMESS  
Right Guard



KINGERY  
Left Tackle



MAYER  
Right Tackle



## A FRIENDLY TIP

He is a winner who lays his plans in advance whether in football or business.

### STORY COUNTY TRUST & SAVINGS BANK

*Resources  
Over a  
Million*

*Member  
Federal  
Reserve*

## Campustown's New Hardware Featuring

SPORTING GOODS  
ELECTRIC APPLIANCES  
and  
GENERAL HARDWARE

• • •  
**ALLMAN'S**  
2536 Lincoln Way

### T. N. METCALF DIRECTOR OF ATHLETICS



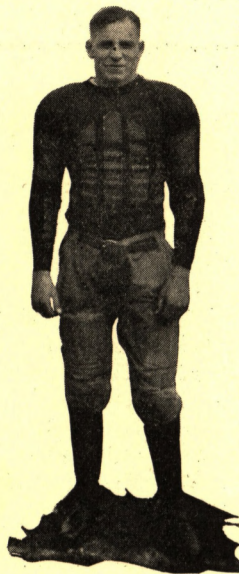
IOWA  
STATE  
COLLEGE



# Cyclones



FISHER  
Halfback



N. BEHM  
Halfback



COE  
Left End



E. HILL  
Halfback



C. HILL  
Fullback



BOND  
Right End



Featuring  
Helen Umpleby  
and  
Myrtle Bihl Gaessler

# VARSAITY B

Approved dances Fric

## CLEANING PRESSING

### IOWA STATE

	No.		No.
Anderson, E. A.	75	Hamilton	10
Anderson, E. J.	17	Hienton	21
Anderson, Joe	60	Hill, C. K.	81
Ayres, C.	18	Hill, Ed.	61
Ayres, J.	12	Kingery	78
Behm, J., Capt.	1	Krekow	40
Behm, N.	56	Leinbach	29
Brockmeyer	46	McCracken	5
Bond, K.	57	Mayer	72
Coe, R.	85	Meyers	19
Cory, L.	80	Rasmess	50
Crawford, F.	41	Sulzbach	28
Crooks, H.	42	Sielaff	64
Ewalt, R.	15	Thomas	77
Fayram	24	Thornburg	69
Fischer	9	Vifquain	79
Fisher	59	Wallace	23
Funkhouser	22	Weiss	66
Galbraith	70	Winget	27
Grimes	64	Woodhull	65
Hall	84	Zellers	68

			L. E. Coe 85
L. H. B.			L. T. Kingery 78
N. Behm 56			L. G. Galbraith 70
F. B. C. Hill 81	Q. B. J. Behm 1	C. Thornburg 69	
			R. G. Rasmess 50
R. H. B. Fisher 59			R. T. Mayer 72
			R. E. Bond 57

OFFI

Welch—Drake .....  
Dana—Nebraska .....  
Taylor—Fairmount .....  
Schobinger—Creighton .....

# MARTIN DR

WE CALL FOR AND DELIVER



# ALL ROOM

y and Saturday Nights

For lessons in  
Feature, Classical  
and  
Ball Room Dancing

## KANSAS U.

R. E.  
Powers  
27

R. T.  
W. Mullins  
3

R. G.  
Latin  
9

C.  
Davidson  
5

L. G.  
Cramer  
4  
or  
Sandborn  
44

L. T.  
Smith (Capt)  
45

L. E.  
Burton  
6

R. H. B.  
Starr  
1

F. B.  
Wall  
28  
or  
Mackie  
7

L. H. B.  
Schmidt  
33  
or  
Anderson  
11

Starr  
Hamilton  
M. Mullins  
Cramer  
Davidson  
Burton  
Mackie  
Latin  
Peterson  
Anderson  
Testerman  
J. Coulter  
Mullins D.  
Halpin  
Cloud  
Taylor  
Isett  
Blackburn  
Perry  
Shannon  
Brown  
Hawkins

1	Powers	27
2	Wall	28
3	Hodges	29
4	R. Baker	30
5	Voights	31
6	Shenk	32
7	Schmidt	33
9	Meyers	34
10	Kullman	35
11	Zuber	36
12	Keller	37
13	Freese	38
14	Wellman	39
15	Rooney	40
16	Hart	41
17	McInerny	42
18	E. Coulter	43
21	Sandborn	44
22	Smith (Capt)	45
24	H. Baker	46
25	Slifer	47
26	Snyder	48

REPAIRING  
DYEING

IALS

.....Referee  
.....Umpire  
.....Head Linesman  
.....Field Judge

# ESS CLUB

PHONE 1362-W



## The Ft. Dodge, Des Moines & Southern Transportation Company

Pierce Arrow Parlor and Reo Sedan Cars, clean, comfortable and beautifully finished are at your disposal.

Add to this beauty, an enduring comfort built into every part of this vehicle, safety that you can see and feel, and a force of drivers trained in both courtesy and driving—then you can understand why our Buses are so popular.

**Ames, Iowa**  
Phone 199

**G. E. MOTZ**  
General Office—Boone, Ia.  
Phone 105

**Des Moines, Iowa**  
106 Sixth Ave.  
Phone Mar. 3205

**Leave: Boone via Madrid—**

8 A. M., 10 A. M., 4 P. M., 6 P. M., 8 P. M.

**Arrive: Des Moines—**

9:45 A. M., 11:45 A. M., 5:45 P. M., 7:45 P. M., 9:45 P. M.

**Leave: Des Moines via Madrid—**

8 A. M., 10 A. M., 4 P. M., 6 P. M., 11:15 P. M.

**Arrive: Boone—**

9:45 A. M., 11:45 A. M., 5:45 P. M., 7:45 P. M., 1 A. M.

**Leave: Webster City via Boone—**

8:35 A. M., 4:35 P. M.

**Arrive: Des Moines—**

11:45 A. M., 7:45 P. M.

**Leave: Des Moines via Boone—**

8 A. M., 4 P. M.

**Arrive: Webster City—**

11:10 A. M., 7:10 P. M.

**Leave: Ames Campus via Ankeny—**

7:30 A. M., 9:30 A. M., 11:30 A. M., 3:30 P. M., 5 P. M., 7:30 P. M.

**Arrive: Des Moines—**

9:00 A. M., 11:00 A. M., 1 P. M., 5 P. M., 6:30 P. M., 9 P. M.

**Leave: Des Moines via Ankeny—**

7:30 A. M., 9:30 A. M., 1:30 P. M., 3 P. M., 5:30 P. M., 11:15 P. M.

**Arrive: Ames Campus—**

9 A. M., 11 A. M., 3 P. M., 4:30 P. M., 7 P. M., 12:45 A. M.

**Leave: Fort Dodge via Humbolt—**

7 A. M., 12:30 P. M., 3:30 P. M.

**Arrive: Algona—**

9:35 A. M., 3 P. M., 6 P. M.

**Leave: Algona via Humbolt—**

7 A. M., 12:30 P. M., 4 P. M.

**Arrive: Fort Dodge—**

9:30 A. M., 3 P. M., 6:30 P. M.

My New Location

# 314 MAIN Street

is still headquarters  
for

CLOTHING AND  
ATHLETIC GOODS

as it has been for many  
years

# Gus Martin

Across from the Sheldon-Munn

# Everything in Jewelry

ALSO A COMPLETE LINE OF  
FRATERNITY AND SORORITY  
JEWELRY

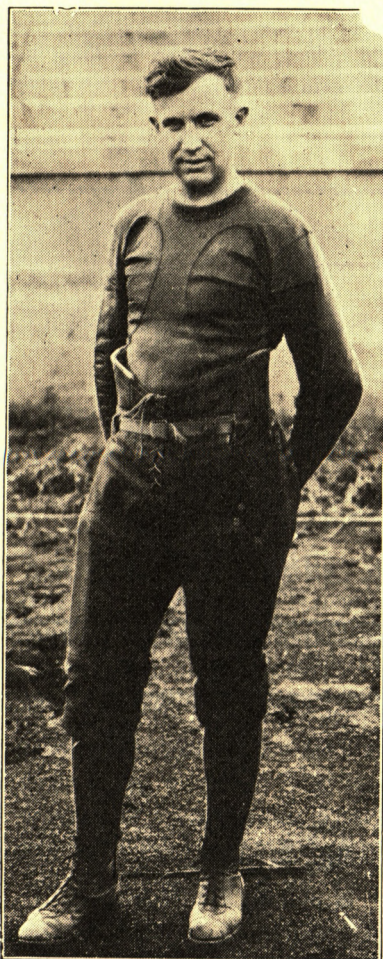


**C. W. DUDGEON**

Ames' Leading Jeweler  
for Over 30 Years.



# Kansas



GEORGE (Potky)  
CLARK  
Coach

George "Potsy" Clark, head football coach at Kansas, is now on his fifth year at the Mount Oread institution. Clark formerly was quarterback on the University of Illinois team and was an All-Western Conference choice for two years. He also played a backfield position on the championship 89th Division football team of the A. E. F.

Reginald "Babe" Smith, captain of the University of Kansas football team this season, is playing his third year for the Varsity. Last year he was an All-Valley tackle selection on most of the newspaper choices. He weighs 208 pounds and is 6 feet 1 1-2 inches tall. At left tackle he has been a power in the Jayhawk defense for several seasons, his first year being in 1923 when the Kansas goal line was not crossed all season.



Capt.  
SMITH  
Left Tackle



NORMA TALMADGE IN "SECRETS" PRINCESS TONIGHT

# BLUE INN

SPECIALS  
PICNIC LUNCHESES  
FREE DELIVERY OF  
DOLLAR ORDERS

Two Doors East of Ames Theatre  
Phone 1641-W

Wsse—"Give me a chocolate soda without any chocolate."

Wiser—"I'm sorry but we haven't any chocolate. You will have to take your chocolate soda without any strawberry."

FOR SKILLED HAIR CUTS

Call  
COLLEGE BARBER SHOP

and  
McCurdy's Basement  
Barber Shop

# College Book Store

On the Campus

COMPLETE LINE TEXT BOOKS

and

STUDENTS' SUPPLIES



## Jayhawk Stars



Shannon  
Backfield



Wellman  
Backfield

### JAYHAWK SQUAWK

LAWRENCE, Kans., Sept. 30—On Stadium field, a football squad of forty University of Kansas young men are working out daily in preparation for the coming strenuous season of eight Missouri Valley games, beginning with a contest with Oklahoma Aggies, Oct. 3, and closing with the annual Kansas-Missouri game, Saturday, Nov. 21.

The prospects for an excellent Jayhawker eleven appear brighter than for several years. Thirteen latter men have returned, while nine others are men who have been on the squad in former years. The other eighteen have had no experience on Kansas elevens.

The squad this year is young as years go, averaging but 20.5 years. The total weight of the squad is 6910, an average weight of 172.85 pounds. The backfield has an average weight of 163.8, while the line on a squad basis will average 178.7, end to end.



Davidson  
Center



Starr  
Backfield



# Congratulations Iowa State

The new Stadium is a monument to the Cyclone spirit.

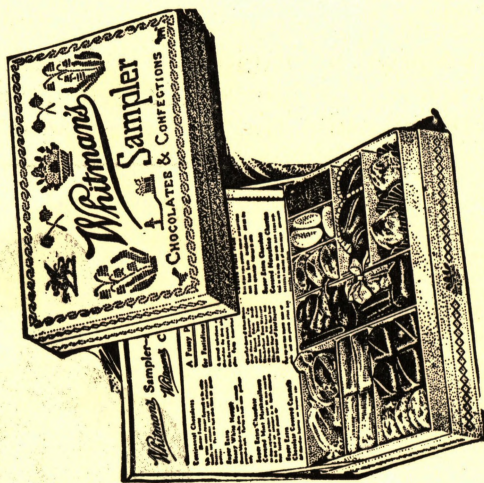
We serve the student body.

The largest and most efficiently managed filling station on the campus.

EAT AT

## The College Inn

Alumni Hall



THIS is the STORE THAT  
SELLS the SAMPLER

Is a Sales Agency for the sale of all the Whitman's Chocolates and Confections—the *Quality Group*. Every Whitman's package sold in this store is received direct from Whitman's—not through a middleman. This is one reason why we can guarantee entire satisfaction with every package bearing the name Whitman's—doubly guaranteed, by us and by Whitman's. BUY CHOCOLATES IN SAFETY.

**JUDISCH BROTHERS, DRUGS**

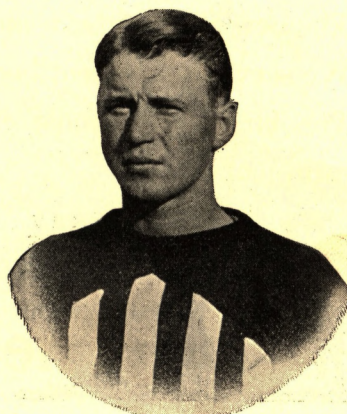
209 Main Street  
Phone 70



## Jayhawk Stars



W. Mullins  
Right Tackle



Sanborn

Karl Schlademan, the Kansas line coach played his undergraduate football at Purdue. He is also head track coach at Kansas.

John Sabo is a new man on the Jayhawk coaching staff this season. He is working especially with the end candidates. He was an end on the Illinois team from 1918 to 1921 and made the All-Conference honorary eleven in that time.



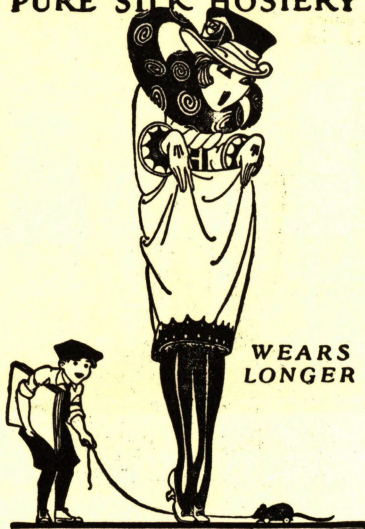
Halpin



Powers  
Right End



## Humming Bird PURE SILK HOSIERY



## Worth Seeing

Our stock of Humming Bird Silk Hose is well worth seeing. We have these splendid hose in all wanted colors. Extra long. Exceedingly durable.

We are headquarters for dependable hosiery.

### STEPHENSON

Opposite Campus

One sure way of telling the difference between a man who goes to college and one who doesn't, is that the man who doesn't, usually dresses like the college man should.

—Notre Dame Juggler.

The only difference between Byron and the average collegian is that Byron was married and wrote poetry.

—Black & Blue Jay.

Shed a tear for Joseph Meets,  
He would look back while crossing streets.

Heave a sigh for Ernest Vail,  
He thought he'd learn to swim by mail.

Raise a lament for poor old Jess,  
His Ford bumped into an H. C. S.

Rest in peace, J. William Heep,  
You'll look next time before you leap.

Sound the knell for lineman Stroke,  
At the very top his belt strap broke.

Say a prayer for H. S. Burr,  
He skimmed the roads at sixty per.

Here lies William Scofflaw Tree,  
The alcohol was wood, you see.

—Yellow Crab.

The professor had asked time and again for the students to put more personal touch in their themes, so one of the papers which he received ended thus:

"Well, professor, how are the wife and kiddies; and, by the way, before I forget it, could you lend me five dollars?"

—Penn. Punch Bowl.

## MEN

WE LIKE YOUR SPIRIT

STOP IN ANY TIME

## Lincoln Candy Kitchen

Campustown



## INDOOR TRACK TEAM



Top row—Price, Buck, Moffet, G. Dempster, Blessing, Witmer, K. Dempster, Copeland, Bonnell, Fegtly, Grove, Gensicke, Malone, Story  
Bottom row—Drew, Crawford, Sadler, Morling, Suit, Greenlee, Owen, Conger, Griffith, Christie, Meeker, Holcomb, Burnison.

## TWO-MILE MEDLEY RELAY TEAM



Burnison, Conger, Greenlee, Crawford



## We Congratulate Iowa State College ON HER NEW STADIUM.

Its completion marks another step in the wonderful progress Iowa State is making.

Another progressive step in Ames is the establishing of Smith & Morris Company, operating two stores handling only the best lines of nationally advertised clothing and furnishings, and selling for cash only, thus lowering our overhead expenses and passing the savings along to you.

### SMITH & MORRIS CO.



#### DOWNTOWN STORE

215 Main

Here we have a complete showing of Clothing and Furnishings for the College Man and the more conservative dresser.

#### COLLEGE SHOP

2528 Lincoln Way

An exclusive shop for College Men always showing the newest authentic College Styles.

## FIGHT, AMES, FIGHT! BEAT KANSAS

Open Your Checking and Savings Account With Us

### Union National Bank

and

Union Trust and Savings Bank

Ames, Iowa

Capital and Surplus, \$150,000.00





INTRAMURAL ATHLETIC TROPHIES

### INTRAMURAL ATHLETICS

Athletic competition among all of the organizations on the Campus was given a big boost when Frank Willaman, Head of Intramural Athletics, arranged the system of interfraternity participation that is now in use. It is primarily a point system that is based not only upon the winning of events but also the giving of point honors for entering in that particular event. The list of sports included in the department's athletic activities is long and varied. There is outdoor baseball, cross country, outdoor and indoor track, boxing, wrestling, foulshooting, basketball, baseball, and handball to hold the interest of the Greek athletes. There are small cups for each of the sports and a large one that is given to the organization that shows its supremacy in a majority of events. At present this cup decorates the halls of Phi Kappa Psi but judging from the pre-season enthusiasm, several other houses are going to make a strong bid for its guardianship in the coming year.



## COMMON PENALTIES

### Loss of Five Yards

1. Violation of the off-side rule, which includes:

(a) Lineman or backs illegally in motion when the ball is snapped.

(b) Any player of the kicking side ahead of the ball when it is kicked at the kick-off.

(c) Attempts to draw opponents into charging before the ball is snapped.

2. Unreasonable delay by a team, usually evidenced by calling signals several times before the ball is snapped.

3. Running into the kicker after he has kicked the ball.

4. Failure of substitute to report to referee when entering the game.

5. Unfair play not specifically covered in the rules.

6. Time called more than four times during a half at the request of the captain of a team.

7. Crawling with ball after tackled.

### Loss of Fifteen Yards

1. Substitute communicating with players before the ball is put in play

2. Interference with a man who has signaled for a fair catch.

3. Throwing player to the ground after he has made a fair catch.

4. Offensive player pushing or pulling the man carrying the ball.

5. Offensive player holding a defensive player.

6. Players of the side making a forward pass interfering with defensive players after the ball is passed.

7. Deliberately roughing the kicker after he has kicked the ball.

8. Piling up on players who are down.

9. Tackling a man after he has run out of bounds.

10. Clipping.

11. Intentional throwing of forward pass to the ground.

12. Offensive player tripping an opponent.

13. Side-line coaching.

## Two Stores to Give You Double Service

### TYPEWRITERS

### EVERY STUDENT NEEDS ONE

We can offer you either the Corona or Remington Portables, the two best portables in the world.

STANDARD KEYBOARD, EXACTLY LIKE THE LARGER MACHINES

Our Terms Are Easy

\$10.00 Down. \$5.00 Per Month

\$60.00 is the Price of Either Portable

LET US TALK TO YOU ABOUT A TYPEWRITER

REYNOLDS & IVERSEN  
DOWNTOWN

STUDENT SUPPLY STORE  
ACROSS FROM CAMPUS



# AMES FOOTBALL RECORD

	Played	Ames Won	Tied	Ames Lost
Nebraska .....	19	6	1	12
Grinnell .....	26	17	1	8
Drake .....	24	18	1	5
Iowa .....	22	7	0	15
Minnesota .....	23	3	1	19
Coe .....	17	15	0	2
Missouri .....	18	10	2	6
Cornell College .....	16	13	0	3
Simpson .....	15	13	1	1
Kansas Aggies .....	9	5	2	2
Iowa State Teachers .....	7	4	2	1
Morningside .....	7	6	0	1
Kansas U. ....	7	2	1	4
Washington .....	6	5	0	1
South Dakota .....	4	4	0	0
Des Moines U. ....	4	4	0	0
Highland Park .....	2	2	0	0
Wisconsin .....	4	0	0	4
Penn College .....	2	2	0	0
Still .....	2	2	0	0
**Des Moines Y. M. C. A. ....	2	2	0	0
Northwestern .....	1	1	0	0
Central (Okla.) .....	1	0	0	1
Creighton .....	1	1	0	0
*Camp Dodge .....	1	0	0	1
Ellsworth .....	1	1	0	0
Rush Medical .....	1	1	0	0
**Fort Dodge .....	1	1	0	0
Nebraska Wesleyan .....	1	1	0	0
**Panora .....	1	1	0	0
**State Center .....	1	0	0	1
**Iowa Falls .....	1	1	0	0
**Butte, Montana .....	1	1	0	0
**Light Guards (Omaha) .....	1	0	0	1
Totals .....	250	149	12	89

\*Service Team U. S. Army.

\*\*Not a College Team.



FOR THRILLS IT'S A WOW. "THE LOST WORLD." OPENS HERE WEDNESDAY

### COMMON PENALTIES—(Cont.)

#### Loss of Half Distance to the Goal Line

1. Return of the player to the game who has previously been in that same half.
2. Disqualification of a player for rough play.
3. Any foul occurring inside the opponent's one-yard line.

#### Loss of a Down

1. Illegal or incomplete forward pass.
2. Forward pass striking the ground.
3. Forward pass touched by two eligible players of the passing side.
4. Forward pass going out of bounds on the fly.

#### Loss of Ball

1. Ball kicked out of bounds unless touched in the field of play.
2. Illegal use of hands or arms to prevent an opponent from securing loose ball.
3. Forward pass touched by ineligible player of the passer's side.
4. Interference by defensive side under a forward pass.

5. Failure to advance the ball ten yards in four downs.

6. Kicking or kicking at a loose ball.

7. Player on the kicking side who is ahead of the ball when it is kicked and touches the ball before it touches an opponent.

#### Forfeiture of Game

1. Refusal to abide by referee's decision or to play within two minutes after being ordered to do so by the referee.

2. Committing fouls to delay the game.

#### Important Note Regarding Time Out

This is automatically taken out during a try-for-point after touch-down; after a safety or a touch-back; after a fair catch has been made; after an incomplete forward pass; during enforcement of all penalties; when the ball goes out of bounds; when a substitution is made; or when for any reason play is suspended by the referee. Time should not begin again, after any of the aforesaid, until the ball is actually passed back from center.

BALDWIN PIANOS

BRUNSWICK

PHONOGRAPHS

RECORDS

RADIOLAS

ESCHBACH MUSIC HOUSE

LOWRY & THEIS

PRESCRIPTION

DRUGGISTS

217 Main St.

Ames, Iowa

PARNO'S JEWELRY STORE

Campustown, Ames, Iowa

For All Kinds of College, Fraternity and Sorority Jewelry.

Watch, Clock and Jewelry Repairing

Over 20 Years Experience

First Door East of Campus Lunch in Bisig Shoe Shop

QUADE

ARTIST PHOTOGRAPHER

Edison Phonographs and  
Edison Records

We have served the students and faculty of Iowa State college for more than 25 years.

Phone 28

417 Main St.



# IOWA STATE BOXING TEAM



TOP ROW—LONG, KINTZ, CHAMBERS. TRAILER, CILLEY  
 BOTTOM ROW—DUNBAR, DOLAN, LARSON, BLOOM, VAUGHAN



COACH "MIKE" CHAMBERS



CAPT. DUNBAR



# Bates Baking Company

BUTTERNUT BREAD

Ames, Iowa

404 Duff

Phone 206

OH!

The inebriated passenger in the elevator lost all his self-control when the operator stopped the car with a jolt at the third floor.

"Lemme out!" he demanded, "I'm through with this damn machine!"

"Oh! Come now," replied the boy. "We're almost down. Surely you can stand just three more stories?"

The polluted one paused. Then he subsided, suddenly giggling:

"All right, as long as they're good snappy ones!"

—*Cornell Widow.*

It is no wonder that the youths of today have such a nutty look. Think how often they have to shell out.

—*Middlebury Blue Baboon.*

He, 1: How late do you think I was out last night?

He, 2: Five-thirty?

He, 1: Gosh, your wife tells you everything.

—*Dartmouth Jack o'Lantern.*

## Eventually

## You Will Call

## Dragoun

Transfer and Storage Co.

"Serves You Right"

### TO THE STUDENTS, FACULTY, ALUMNI AND FRIENDS OF IOWA STATE COLLEGE

We send congratulations on the completion of the splendid addition to the stadium on State field.

October 10, 1925 marks a big step forward for Iowa State athletics.

A proper spirit among the student body and active co-operation by all friends of the college will insure success.

TRIBUNE PUBLISHING CO.

Ames, Iowa



# The O'Shea Football Jerseys



## Practical--Perfect--Popular

Coach Robert Zuppke—University of Illinois

“The only Practical football jersey.”

Coach K. K. Rockne—University of Notre Dame

“The O'Shea Jersey is institutional with Notre Dame football teams.”

Coach J. W. Heisman—University of Pennsylvania

“I have found it to be practical in detail and perfect in use.”

Coach Glen Warner—University of Pittsburg

“Has many features which make it absolutely necessary to every football team.”

Write for quotations and complete information to

## O'Shea Knitting Mills

Athletic Knitted Wear for Every Sport

2414 N. Sacramento Avenue . . . . . Chicago



