

OVERLAND '76



HOME COMING

IOWA STATE
KANSAS STATE

October 30, 1976



One Dollar

THE AMALGAMATED SPIRIT & PROVISION CO.

Featuring-
Alaska king crab,
prime rib and steaks
of highest quality.

Join us for lunch
or dinner, seven nights
a week.
320 South 16th St.
(just west of
Warehouse Market)



PURVEYORS OF DISTILLED SPIRITS & FOODS OF HIGHEST QUALITY



REFLECTIONS

AMES' FINEST NIGHTSPOT
and DISCOTHEQUE

OPEN 6 NIGHTS A WEEK
4 p.m. til closing —

OPEN at 10:30 a.m.
GAME DAYS

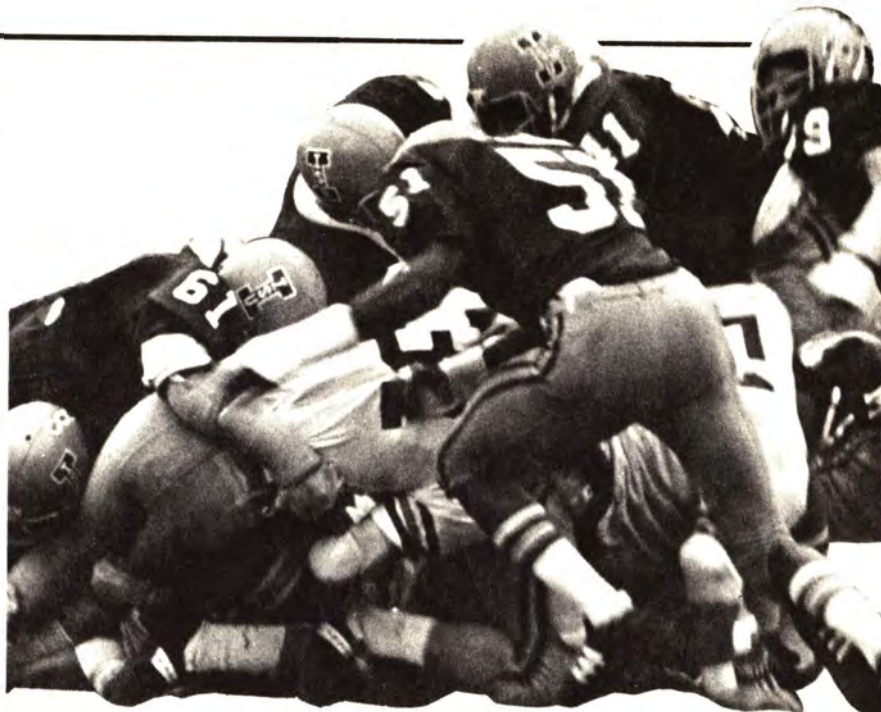
414 Lincoln Way

Ames, Iowa

Ames, Iowa
Gardena, California
Roanoke, Virginia

Collegiate Pacific

ISU
GO
CYCLONES!



Contents

ISU Administration	3
ISU Coaching Staff	5
ISU - Kansas State Game Story	7
Same Old Wrestling Outlook: Bright	10
Big Eight Schedule & Results	11
Cardinal & Gold Scholarship Contributors	14-15
State's 250 Club	17
Cy's Favorite Alum	19
Cyclones	25-30
ISU Roster	32
Starting Lineups	Center Spread
Kansas State Roster	33
About Kansas State University	37
Wildcats	38-39
Cyclone Century Club	41-44
ISU Athletic Department	63

COVER

Pictured on the cover are the 1976 Cyclone Quad-captains: left to right - Don Greenwood, Tony Hawkins, Wayne Stanley and Mike Stensrud.

The 1976 Earle Bruce Show

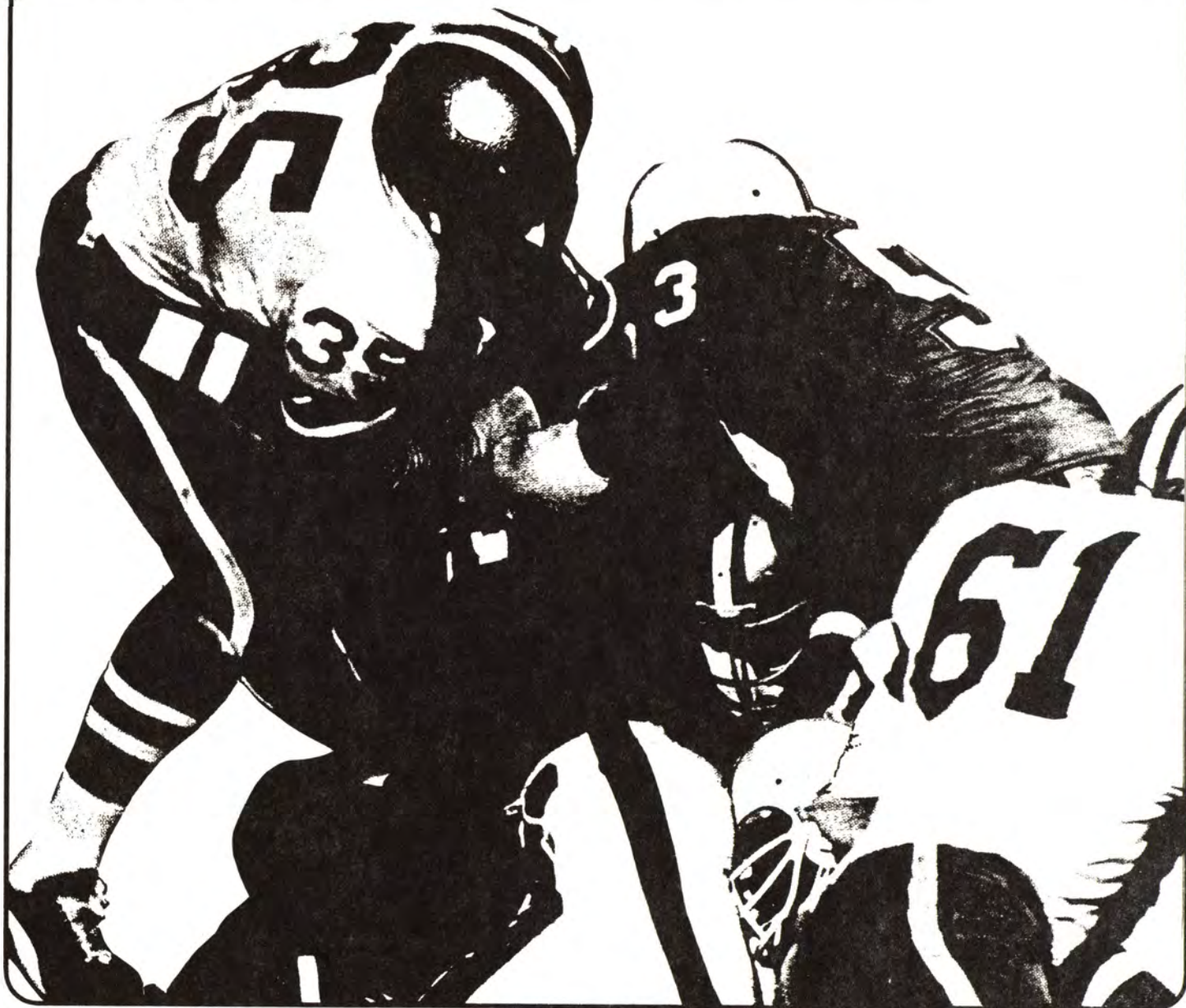
Tune in each week during the season for exciting film highlights of the game . . . plus commentary and color on the week's action from Coach Earle Bruce and Sports caster Pete Taylor.

A presentation of



Bankers Trust

KCCI-TV Des Moines 10:30 PM Sundays
KCAU-TV Sioux City 10:30 PM Sundays
KGLO-TV Mason City 10:30 PM Mondays



ADMINISTRATION



DR. W. ROBERT PARKS
President
Iowa State University



JOHN MAHLSTEDE
Chairman, Faculty
Representative to the
Big Eight Conference



LOU McCULLOUGH
Director of Athletics
Iowa State University



BOB MARCUM
Associate
Director of Athletics

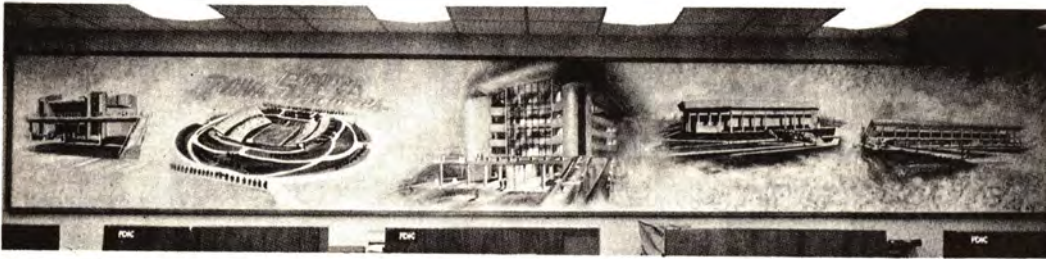


MAX URICK
Assistant
Director of Athletics

BOARD of REGENTS

Front Row: S.J. Brownlee, Steve E. Zumbach, Donald H. Shaw, John Baldrige. Back Row: Ray Bailey, Mrs. Robert Collison, Mrs. H. Rand Petersen, Harry Slife, Stanley Barber.





Be sure to stop in and see our beautiful painted mural of the Iowa State Center.

For 60 consecutive football seasons
The UNIVERSITY BANK "TEAM" has enjoyed
serving Iowa State students, faculty and staff.
To Coach Earle Bruce and his team
go our best wishes for the 1976
Cyclone Football Season!



UNIVERSITY

BANK AND TRUST COMPANY

MEMBER F. D. I. C.

CAMPUSTOWN/LINCOLN WAY AT HAYWARD AVENUE ■ DOWNTOWN/MAIN STREET AND GRAND AVENUE

BENSON MOTORS



BUICK

OPEL



American Motors
Corporation

Jeep



TRUCKS

NEW CARS — 5th and Douglas

USED CARS — 228 South Duff

CYCLONE COACHING STAFF



Front Row (l to r) Pete Rodriguez, Tom Lichtenberg, Earle Bruce, Randy Hart and Bob Tucker. Back: Jim Williams, Tom Vaughn, Charlie Lyle, Glen Mason and Keith Kephart.

Head Coach Earle Bruce is in his fourth year at Iowa State and after over 20 years of coaching on the high school and collegiate levels is recognized as one of the finest coaches in the business.

Bruce, who last January coached the East team to a 16-0 win in the Hulu Bowl for the first shut-out in 30 years, was three times the Ohio prep "Coach of the Year" before becoming an assistant at Ohio State. He became head coach at Tampa in 1972 and led the Spartans to a 10-2 record and bowl victory.

Pete Rodriguez is in his first year as defensive coordinator and linebacker coach. He came to ISU from Florida State, where he had the same responsibilities. Rodriguez has a top coaching background, working at Arizona and going to the Sun Bowl and spending five years at Western Illinois and going 39-13. He is a graduate of Western State in Colorado and coached two years in the Colorado prep ranks.

Tom Lichtenberg coaches the Cyclone quarterbacks and wide receivers. He is in his third year on the staff after coaching at Morehead (Ky.) State and spending 13 years in the Ohio prep ranks. He is a 1962 graduate of Louisville.

Randy Hart directs the ISU defensive tackles and middle guards, his third year with those duties after coaching the freshman team for one season. He had previously coached at Tampa for one year. He is a 1970 graduate of Ohio State and has played in the Rose Bowl.

Bob Tucker coaches the defensive ends at Iowa State and is one of the original members of Bruce's ISU staff, coming in 1973 after four years at Wichita State. He is a 1965 graduate of Wooster College and coaches Ohio high school football before moving to Wichita.

Jim Williams begins his first year on the Iowa State staff after becoming the most successful coach in Iowa high school history. In 12 years at Des Moines Dowling High, Williams led the Maroons to a 105-9-1 record and earned numerous coaching honors. His overall prep record, including stays at Audubon and East Dubuque, Ill., is 181-21-3. Dowling never lost a Metro-Conference game under Williams (56-0) and once had a 47-game winning streak.

Tom Vaughn, a former All-America at Iowa State in 1964, is in his second year as coach of

the ISU running backs. Vaughn spent seven years in the NFL with the Detroit Lions before joining the coaching ranks with Wayne State University and the Detroit Wheels of the WFL. Also an academic All-America during his playing days, Vaughn is considered by many to be the best all-around back in school history.

Charlie Lyle coaches the Cyclone secondary, his fifth year on Bruce's staff and fourth year at Iowa State. A 1962 graduate of Tampa, Lyle coached in the Florida high school ranks before moving to Tampa as the secondary coach. His Spartan unit ranked nationally.

Glen Mason is in his second year at Iowa State as the offensive tackle and tight end coach. Mason came to ISU from Ball State and has also coached at Allegheny College. He is a 1971 graduate of Ohio State, playing on Big Ten title teams.

Keith Kephart has been on the ISU staff since 1968 and is in his third year of the junior varsity head coach. The 1966 graduate of Dubuque has also played a major role in the Cyclones' recruiting efforts since his arrival and was the recruiting coordinator for several years.

DES MOINES, IOWA

**PROUD HOME OF CYCLONES
MARK WILLIAMS AND MIKE SCHWARTZ**



20 -MIKE SCHWARTZ • 16 -MARK WILLIAMS

**THESE FOLLOWING DES MOINES BOOSTERS ARE BACKING
THE 1976 IOWA STATE CYCLONES** —

PLASTIC SUPPLY, INC.
Chuck Irvine

DES MOINES COLD STORAGE CO.
Chuck Muelhaupt

GIBBS/COOK

JACOBSON WAREHOUSE COMPANY
Dick Jacobson-Larry Larson

CONTRACTORS STEEL CORPORATION
Warren Sparks

MASSEY-FERGUSON INC.

MID-CONTINENT BOTTLERS

BOB BROWN CHEVROLET

DES MOINES AGENCY--EQUITABLE OF IOWA
Jack Hilmes

MAINLINE EQUIPMENT COMPANY
Nick Dozoryst

Iowa State Kansas State



Saturday, October 30, 1976

Ames, Iowa

Cyclones Seek to Rebound Today

Homecoming and the chance to stay alive in the topsy-turvy Big Eight football race are two of the incentives today as Iowa State faces Kansas State.

Both teams are seeking to recover from losses last week, the Cyclones dropping a 33-14 game to Colorado while Kansas State bowed to intra-state rival Kansas, 28-14.

Iowa State has a 5-2 record, 1-2 in league play, and is still very much in the league race as every team has at least one loss. Five teams -- Oklahoma, Nebraska, Colorado, Missouri and Oklahoma State -- are at 2-1 while Kansas and I-State are 1-2 and KSU is 0-3.

The Cyclones bumped the Wildcats, 23-18, two years ago in its last Homecoming game in Clyde Williams Field and today's crowd should be in the 43,000 range, making it the second largest to date in the new complex.

Iowa State brings one of the most productive offenses in the nation into the game, ranking among the top 10 in total offense with a near perfect balance of running and passing.

The Cyclones have gained 1,229 net yards passing and 1,839 net yards rushing while scor-

ing 18 touchdowns through the air and 14 on the ground.

Kansas State boasts a tough defense headed by all-Big Eight linebacker Gary Spani, currently averaging over 15 tackles a game. Other Wildcat defensive leaders include Carl Pennington, Spani's running mate at linebacker, and nose guard Theophilis Bryant.

Kansas State has had more than its share of offensive problems, however, dating back to last spring when regular quarterback Joe Hatcher was lost by injury. The Wildcats have started an all freshman backfield this year, although veteran Roscoe Scobey will start today at tailback.

The Cyclone defense has been headed of late by tackle Tom Randall, linebackers Tom Boskey and Mark Benda and an alert secondary paced by safety Tony Hawkins.

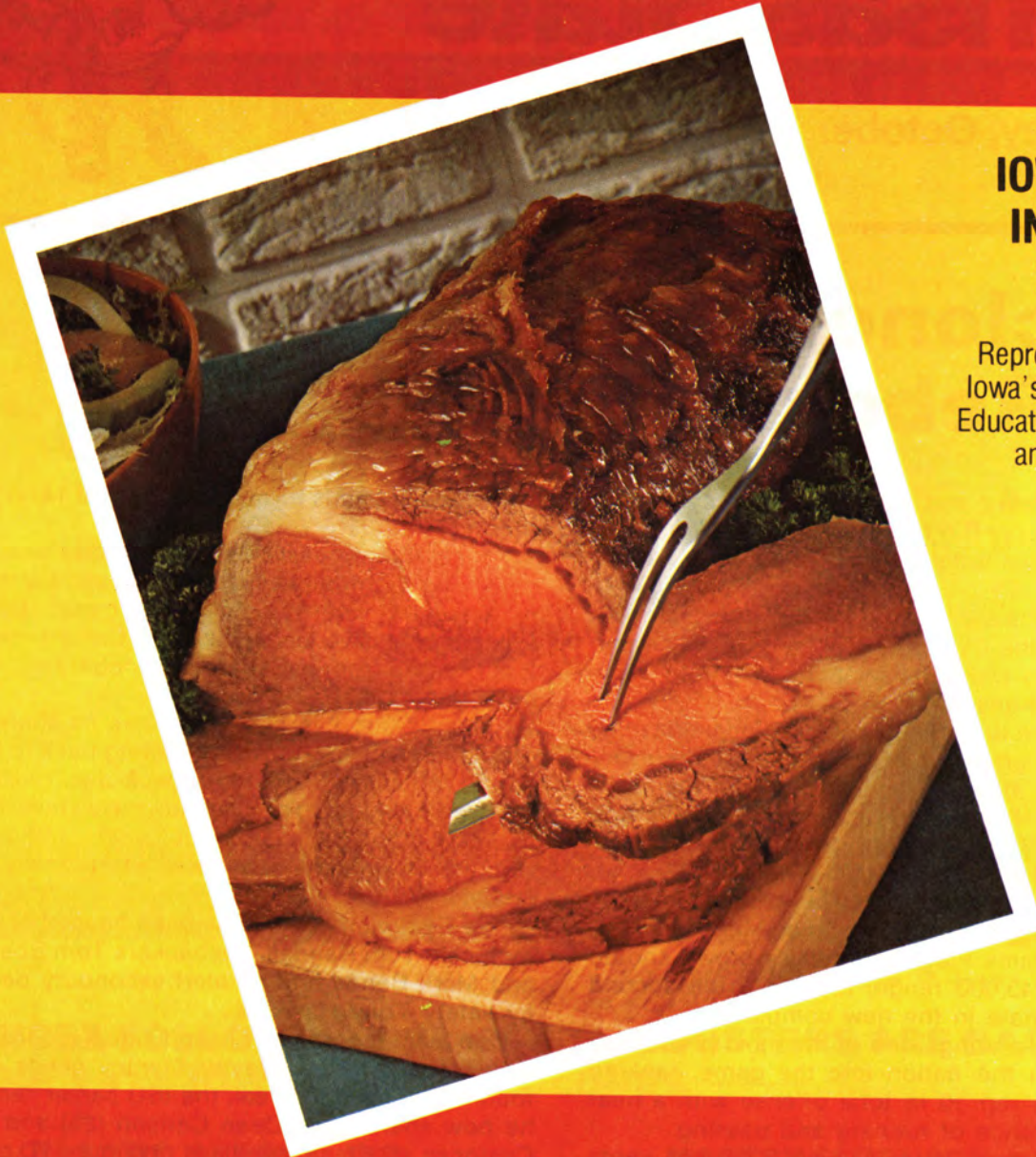
One team record and one individual record are within reach today. Wayne Stanley needs one touchdown pass to break the ISU career record he now shares with Dean Carlson (25) and the Cyclones as a team need just one more TD pass to crack the team record of 18 set in 1971.

Let's Go State!

CYCLONE FOOTBALL 1976

BEEF UP YOUR OWN TRAINING TABLE

SERVE FLAVORFUL IOWA CORN-FED BEEF



IOWA BEEF INDUSTRY COUNCIL

Representing all of
Iowa's Cattlemen in
Education, Research
and Promotion.

Jim Mullins
Chairman

GO CYCLONES

**GO
CYCLONES**



**CYCLONE
BOOSTERS**

AIR CONDITIONING, INC. (A.C.I.)
AMES STATIONERS
ARCHIES GOODYEAR SHOE REPAIR
107 WELCH
CENTRAL STATES ROOFING
CHEF'S INN
DURLAM & DURLAM
EVERT'S FLOWERS, INC.
HEINRICH ENVELOPE, INC.
Boone, Ia.
H.L. MUNN LUMBER
HUNZIKER & FURMAN REALTY
J4 ROLLAWAY
JAMES THOMPSON & SONS
McFARLAND CLINIC
MIDWEST TRANSPORTATION, INC.
NIMS SPORTSMAN'S OF AMES
RATLIFF SPUDNUT SHOP
SEARS
STUDENT SUPPLY
TODD & SARGENT, INC.
WOODWORTH D-X



A Cyclone Preview

Same Old Wrestling Outlook: Bright

It seems as though every year the pre-season outlook on Iowa State's wrestling team reads the same -- one of three contenders for the Big Eight championship, one of handful eyeing the NCAA trophy and expecting to win about 90%, if not 100%, of its dual matches.

It's the same story again, perhaps with a bit more punch this season than in the last couple years. The defending Big Eight champions and NCAA runners-up expect big things to happen.

Head Coach Harold Nichols is just one win away from his 300th Iowa State career dual victory, which should come Nov. 19 when the dual season opens at Drake. His teams have placed in the top three nationally 17 times in 20 years.

The Cyclones have a potent lineup despite losing the likes of Big Eight champions Bob Antonacci, Pete Galea and Willie Gadson.

Starting at the bottom, I-State features NCAA runner-up Johnnie Jones at 118 pounds, returning for his senior season. The likely replacement for Antonacci is redshirt sophomore Mike Land, an Olympic alternate last summer who placed sixth two years ago nationally at 118. Randy Nielsen, a Big Eight runner-up at 142, is expecting to drop to 134 where he could become a mainstay.

The 142 pound weight is one of the unsettled spots and how well it is filled could determine how the Cyclones stack up nationally. Joe Zuspahn, a hard-nosed junior, will drop from 158 to 150 this year with ease. He was third at 158 in last year's NCAA meet. Kelly Ward will likely man the 158 pound spot, moving up two weights from last year's 21-1-1 record. He has been exceptional in early workouts.

Big Eight champ Dave Powell is back at 167 while sophomore Rick Bickert and freshman Dave Allen are among the leaders to replace Gadson at 177. Frank Santana, second nationally last year while competing on a bad knee, is back at 190 while Bob Fouts and Rob Whisman will handle the bulk of heavyweight chores. Fouts was sixth in the NCAA.

There are a number of quality wrestlers that haven't been mentioned but who will no doubt play key roles as the season unfolds. If all this sounds good to you, it should be as the Cyclones gun for the NCAA championship this winter.

The biggest home meet of the year will undoubtedly be Feb. 19 when Iowa comes to the campus. Last year's dual drew 14,297 fans for an all-time national record.



HAROLD NICHOLS



FRANK SANTANA



JOHNNIE JONES

BIG 8 CONFERENCE

football schedule

1976 "BIG EIGHT" STANDINGS

ALL GAMES

Team	W	L	T
Oklahoma	5	1	1
Nebraska	5	1	1
Iowa State	5	2	0
Missouri	5	2	0
Colorado	5	2	0
Oklahoma State	5	2	0
Kansas	4	2	0
Kansas State	1	6	0

CONFERENCE

Team	W	L	T
Oklahoma	2	1	0
Nebraska	2	1	0
Missouri	2	1	0
Colorado	2	1	0
Oklahoma State	2	1	0
Iowa State	1	2	0
Kansas	1	2	0
Kansas State	0	3	0

1976 Games and Scores

SEPTEMBER 4

Kansas 28 Oregon State 16

SEPTEMBER 11

DRAKE 14 IOWA STATE 58

Brigham Young 3 Kansas State 13

Tulsa 21 Oklahoma State 33

Colorado 7 Texas Tech 24

Washington State 16 Kansas 35

Missouri 46 USC (N) 5

Nebraska 6 Louisiana State (N) 6

Oklahoma 24 Vanderbilt 3

SEPTEMBER 18

IOWA STATE 41 AIR FORCE 6

Kansas State 14 Texas A&M 34

Okla. State 10 Ark. 16

Colorado 21 Washigton 7

Kentucky 16 Kansas 38

Illinois 31 Missouri 6

Nebraska 45 Indiana 13

California 17 Oklahoma 28

SEPTEMBER 25

KENT STATE 7 IOWA STATE 47

Wake Forest 13 Kansas State 0

Miami(Fla.) 3 Colorado 33

Missouri 22 Ohio State 21

Texas Christian 10 Nebraska 64

Florida State 9 Okahoma 24

OCTOBER 2

OKLAHOMA 24 IOWA STATE 10

Kansas St. 10 Florida State 20

N. Texas St. 10 Okla. St. 16

Drake 24 Colorado 45

Wisconsin 24 Kansas 34

N. Carolina 3 Missouri 24

Miami (Fla.) 9 Nebraska 17

OCTOBER 9

UTAH 14 IOWA STATE 44

Missouri 28 Kansas State 21

Kansas 14 Oklahoma State 21

Nebraska 24 Colorado 12

Oklahoma 6 Texas 6

OCTOBER 16

IOWA STATE 21 MISSOURI 17

Kansas State 0 Nebraska 51

Colorado 20 Oklahoma State 10

Oklahoma 28 Kansas 10

OCTOBER 23

IOWA STATE 14 COLORADO 33

Kansas 24 Kansas State 14

Oklahoma State 31 Oklahoma 24

Missouri 34 Nebraska 24

OCTOBER 30

KANSAS STATE AT IOWA STATE

Missouri at Oklahoma State

Oklahoma at Colorado

Nebraska at Kansas

NOVEMBER 6

IOWA STATE AT KANSAS

Kansas State at Oklahoma

Oklahoma State at Nebraska

Colorado at Missouri

NOVEMBER 13

NEBRASKA AT IOWA STATE

Oklahoma St. at Kansas St.

Kansas at Colorado

Missouri at Oklahoma

NOVEMBER 20

IOWA STATE AT OKLAHOMA ST.

Colorado at Kansas State

Kansas at Missouri

NOVEMBER 26

Oklahoma at Nebraska (T-V)

NOVEMBER 27

Okla. St. at Texas-El Paso

DECEMBER 4

Nebraska at Hawaii(N)



Looking for a bank?

LOOK TO THE **FIRST!**



Member Federal Reserve System
and Federal Deposit Insurance
Corporation.

1st FIRST NATIONAL BANK

AMES, IOWA

2320 LINCOLN WAY
232-6530

5th & BURNETT
232-5561

GO CYCLONES!



Hy-Vee

FOOD STORES

AMES, IOWA

DOWNTOWN - 207 SO. DUFF

OPEN 7 A.M. - MIDNIGHT

CAMPUSTOWN - 112 SO. SHELDON

OPEN 8 A.M. - MIDNIGHT



AMES, IOWA

— HOME OF THE
IOWA STATE
CYCLONES

and
MIKE TRYON
Quarterback

THESE AMES BOOSTERS PROUDLY SUPPORT THE 1976 CYCLONES

Severson Insurance Agency
The Athletic Shoe
Ames Building and Loan
Paul R. Jones Heating and Cooling
Dale Tryon Real Estate
Sevde Transfer and Storage

Shaughnessy's Carpet and Drapery
Ev Cochrane Life Insurance
Bledsoe's
The Den
Aunt Maude's
Mayfair Cleaners

CARDINAL and GOLD Scholarship Program

IOWA STATE UNIVERSITY

Department of Intercollegiate Athletics

THE CARDINAL AND GOLD SCHOLARSHIP PROGRAM



Hundreds of student-athletes have had their education at Iowa State University financed through contributions of Cyclone Club members. More and more, the success of major college athletic programs is dependent upon the financial support of alumni and friends. The Iowa State University Department of Intercollegiate Athletics is proud to honor the individuals and firms on these pages who have contributed one or more \$1,000 Gold Full Scholarships or \$500 for a Cardinal Half Scholarship.

Mal Schmidt



The Gold Full Scholarship Donors

CLINTON J. ADAMS Ames	FRANCE BETTEN Clarion CO.	RAYMOND HAGIE Clarion	RICHARD E. OLSON Des Moines
AMES ADVERTISER Ames	CARL BLUEDORN Waterloo	HARDEE'S RESTAURANTS Ames-Boone	PESTER DERBY OIL CO. Des Moines
AMES DAILY TRIBUNE Ames	LYDD and ADA BOCK Des Moines	CHARLES HERBERT Des Moines	PLASTIC SUPPLY, INC. Des Moines
DR. RUSSELL H. ANTHONY Cedar Rapids	BOB BROWN Chevrolet, Inc. Des Moines	H.R. HILSTROM Sycamore, Ill.	MARVIN POMERANTZ Des Moines
A & W RESTAURANT Ames	DR. JAMES A. BUCK Ames	HOAK CONSTRUCTION CO. Des Moines	RUAN TRANSPORT CORP. Des Moines
RALPH AULMANN Memorial Scholarship Des Moines	WILLIAM W. BURRELL Knoxville	ROBERT HOLLWAGER Des Moines	SCHILDBERG CONSTRUCTION CO. Greenfield
AUNT MAUDE'S Ames	WILLIAM E. CATRON Sunderland, Co.	HERMAN T. AND MARGARET S. HOLMES Newton	SEVDE TRANSFER & STORAGE Ames
DR. WILLIAM BAIRD Ames	CESSFORD CONSTRUCTION CO. LeGrand	T.J. HOLMES Dayton, Ohio	CHARLES W. SHIRLEY Waterloo
ROBERT BARBER Cedar Rapids	CORN STATES METAL FABRICATORS, INC. Des Moines	HUMBOLDT TRUST & SAVINGS Humboldt	C.W. SHIRLEY COMPANY Waterloo
DR. WILLIAM BARNETT Ames	RICHARD L. COX Ames	IOWA-DES MOINES NATIONAL BANK Des Moines	TACO JOHN'S OF I.A., INC. Des Moines
JAMES W. BELL CO. Cedar Rapids	DES MOINES ASPHALT & PAVING Des Moines	KARNS & ASSOCIATES Des Moines	JAMES THOMPSON & SONS Ames
	DES MOINES GOLD STORAGE CO. Des Moines	KENWORTH MID-IOWA, INC. Des Moines	DWIGHT L. TYRRELL Belmond
	DES MOINES REGISTER & TRIBUNE Des Moines	KENTON CONSTRUCTION CO. Des Moines	UNION STORY TRUST & SAVINGS BANK Ames
	DR. JOHN DORAN Ames	KNAPP-TEDESCO INSURANCE AGENCY Ames	UNIVERSITY BANK & TRUST Ames
	E. M. DUBENBERG, INC. Des Moines	MICHAEL O. LARSON Des Moines	VAN BUSKIRK CONSTRUCTION CO. Sioux City
	ECONOMY FORMS CORPORATION Des Moines	MCANICKY CORP. Norwalk	VAWTER & WALTER INC. Des Moines
	RAY A. ENGEL Marshalltown	MASSEY-FERGUSON, INC. Des Moines	DR. DALE WASSMUTH Sioux City
	EVERDS BROTHERS INC. Algona	RICHARD W. MAWE Manchester	WILSON CONCRETE CO. Red Oak
	FEED SPECIALTIES CO. Des Moines	MID-CONTINENT INDUSTRIES, INC. Des Moines	FRED WINKLER & SONS Ames
	FEILEN MEAT COMPANY Des Moines	MIDLAND UNITED DAIRY INDUSTRY ASSOC. Ankeny	WORLD WIDE TRAVEL CENTER Des Moines
	FIRST NATIONAL BANK Ames	DAIRY INDUSTRY ASSOC. Ankeny	DEAN and JO RUSSON Ames
	DR. TOM GARTIN Ames	MIDWEST INDUSTRIES Ida Grove	ROBERT A. WRIGHT Ida Grove
	GIBBS - COOK EQUIPMENT CO. Des Moines	MIRACLE EQUIPMENT COMPANY Grimes	YOUNKER BROTHERS Des Moines
	ED GLAZER Des Moines	NADEN INDUSTRIES Webster City	DR. DANIEL M. YOUNGBLADE Sioux City
	GOMACO, INC. Ida Grove	NEVO MEAT COMPANY L.E. NEKOLA EUIL VOTROUBEK Cedar Rapids	BRUCE YUNGGLAS Webster City
	GREEN CONSTRUCTION CO. Des Moines	R. E. GRIMM Slater	ZEIDLER, INC. Waterloo
			ARTHUR H. NEUMANN & BROS., INC. Des Moines
			A Friend of the CYCLONES
			NEVO MEAT COMPANY L.E. NEKOLA EUIL VOTROUBEK Cedar Rapids
			A Friend of the CYCLONES
			BRUCE YUNGGLAS Webster City
			A Friend of the CYCLONES
			ZEIDLER, INC. Waterloo
			A Friend of the CYCLONES
			ARTHUR H. NEUMANN & BROS., INC. Des Moines
			A Friend of the CYCLONES
			NEVO MEAT COMPANY L.E. NEKOLA EUIL VOTROUBEK Cedar Rapids
			A Friend of the CYCLONES
			BRUCE YUNGGLAS Webster City
			A Friend of the CYCLONES
			ZEIDLER, INC. Waterloo
			A Friend of the CYCLONES
			ARTHUR H. NEUMANN & BROS., INC. Des Moines
			A Friend of the CYCLONES
			NEVO MEAT COMPANY L.E. NEKOLA EUIL VOTROUBEK Cedar Rapids
			A Friend of the CYCLONES
			BRUCE YUNGGLAS Webster City
			A Friend of the CYCLONES
			ZEIDLER, INC. Waterloo
			A Friend of the CYCLONES
			ARTHUR H. NEUMANN & BROS., INC. Des Moines
			A Friend of the CYCLONES
			NEVO MEAT COMPANY L.E. NEKOLA EUIL VOTROUBEK Cedar Rapids
			A Friend of the CYCLONES
			BRUCE YUNGGLAS Webster City
			A Friend of the CYCLONES
			ZEIDLER, INC. Waterloo
			A Friend of the CYCLONES
			ARTHUR H. NEUMANN & BROS., INC. Des Moines
			A Friend of the CYCLONES
			NEVO MEAT COMPANY L.E. NEKOLA EUIL VOTROUBEK Cedar Rapids
			A Friend of the CYCLONES
			BRUCE YUNGGLAS Webster City
			A Friend of the CYCLONES
			ZEIDLER, INC. Waterloo
			A Friend of the CYCLONES
			ARTHUR H. NEUMANN & BROS., INC. Des Moines
			A Friend of the CYCLONES
			NEVO MEAT COMPANY L.E. NEKOLA EUIL VOTROUBEK Cedar Rapids
			A Friend of the CYCLONES
			BRUCE YUNGGLAS Webster City
			A Friend of the CYCLONES
			ZEIDLER, INC. Waterloo
			A Friend of the CYCLONES
			ARTHUR H. NEUMANN & BROS., INC. Des Moines
			A Friend of the CYCLONES
			NEVO MEAT COMPANY L.E. NEKOLA EUIL VOTROUBEK Cedar Rapids
			A Friend of the CYCLONES
			BRUCE YUNGGLAS Webster City
			A Friend of the CYCLONES
			ZEIDLER, INC. Waterloo
			A Friend of the CYCLONES
			ARTHUR H. NEUMANN & BROS., INC. Des Moines
			A Friend of the CYCLONES
			NEVO MEAT COMPANY L.E. NEKOLA EUIL VOTROUBEK Cedar Rapids
			A Friend of the CYCLONES
			BRUCE YUNGGLAS Webster City
			A Friend of the CYCLONES
			ZEIDLER, INC. Waterloo
			A Friend of the CYCLONES
			ARTHUR H. NEUMANN & BROS., INC. Des Moines
			A Friend of the CYCLONES
			NEVO MEAT COMPANY L.E. NEKOLA EUIL VOTROUBEK Cedar Rapids
			A Friend of the CYCLONES
			BRUCE YUNGGLAS Webster City
			A Friend of the CYCLONES
			ZEIDLER, INC. Waterloo
			A Friend of the CYCLONES
			ARTHUR H. NEUMANN & BROS., INC. Des Moines
			A Friend of the CYCLONES
			NEVO MEAT COMPANY L.E. NEKOLA EUIL VOTROUBEK Cedar Rapids
			A Friend of the CYCLONES
			BRUCE YUNGGLAS Webster City
			A Friend of the CYCLONES
			ZEIDLER, INC. Waterloo
			A Friend of the CYCLONES
			ARTHUR H. NEUMANN & BROS., INC. Des Moines
			A Friend of the CYCLONES
			NEVO MEAT COMPANY L.E. NEKOLA EUIL VOTROUBEK Cedar Rapids
			A Friend of the CYCLONES
			BRUCE YUNGGLAS Webster City
			A Friend of the CYCLONES
			ZEIDLER, INC. Waterloo
			A Friend of the CYCLONES
			ARTHUR H. NEUMANN & BROS., INC. Des Moines
			A Friend of the CYCLONES
			NEVO MEAT COMPANY L.E. NEKOLA EUIL VOTROUBEK Cedar Rapids
			A Friend of the CYCLONES
			BRUCE YUNGGLAS Webster City
			A Friend of the CYCLONES
			ZEIDLER, INC. Waterloo
			A Friend of the CYCLONES
			ARTHUR H. NEUMANN & BROS., INC. Des Moines
			A Friend of the CYCLONES
			NEVO MEAT COMPANY L.E. NEKOLA EUIL VOTROUBEK Cedar Rapids
			A Friend of the CYCLONES
			BRUCE YUNGGLAS Webster City
			A Friend of the CYCLONES
			ZEIDLER, INC. Waterloo
			A Friend of the CYCLONES
			ARTHUR H. NEUMANN & BROS., INC. Des Moines
			A Friend of the CYCLONES
			NEVO MEAT COMPANY L.E. NEKOLA EUIL VOTROUBEK Cedar Rapids
			A Friend of the CYCLONES
			BRUCE YUNGGLAS Webster City
			A Friend of the CYCLONES
			ZEIDLER, INC. Waterloo
			A Friend of the CYCLONES
			ARTHUR H. NEUMANN & BROS., INC. Des Moines
			A Friend of the CYCLONES
			NEVO MEAT COMPANY L.E. NEKOLA EUIL VOTROUBEK Cedar Rapids
			A Friend of the CYCLONES
			BRUCE YUNGGLAS Webster City
			A Friend of the CYCLONES
			ZEIDLER, INC. Waterloo
			A Friend of the CYCLONES
			ARTHUR H. NEUMANN & BROS., INC. Des Moines
			A Friend of the CYCLONES
			NEVO MEAT COMPANY L.E. NEKOLA EUIL VOTROUBEK Cedar Rapids
			A Friend of the CYCLONES
			BRUCE YUNGGLAS Webster City
			A Friend of the CYCLONES
			ZEIDLER, INC. Waterloo
			A Friend of the CYCLONES
			ARTHUR H. NEUMANN & BROS., INC. Des Moines
			A Friend of the CYCLONES
			NEVO MEAT COMPANY L.E. NEKOLA EUIL VOTROUBEK Cedar Rapids
			A Friend of the CYCLONES
			BRUCE YUNGGLAS Webster City
			A Friend of the CYCLONES
			ZEIDLER, INC. Waterloo
			A Friend of the CYCLONES
			ARTHUR H. NEUMANN & BROS., INC. Des Moines
			A Friend of the CYCLONES
			NEVO MEAT COMPANY L.E. NEKOLA EUIL VOTROUBEK Cedar Rapids
			A Friend of the CYCLONES
			BRUCE YUNGGLAS Webster City
			A Friend of the CYCLONES
			ZEIDLER, INC. Waterloo
			A Friend of the CYCLONES
			ARTHUR H. NEUMANN & BROS., INC. Des Moines
			A Friend of the CYCLONES
			NEVO MEAT COMPANY L.E. NEKOLA EUIL VOTROUBEK Cedar Rapids
			A Friend of the CYCLONES
			BRUCE YUNGGLAS Webster City
			A Friend of the CYCLONES
			ZEIDLER, INC. Waterloo
			A Friend of the CYCLONES
			ARTHUR H. NEUMANN & BROS., INC. Des Moines
			A Friend of the CYCLONES
			NEVO MEAT COMPANY L.E. NEKOLA EUIL VOTROUBEK Cedar Rapids
			A Friend of the CYCLONES
			BRUCE YUNGGLAS Webster City
			A Friend of the CYCLONES
			ZEIDLER, INC. Waterloo
			A Friend of the CYCLONES
			ARTHUR H. NEUMANN & BROS., INC. Des Moines
			A Friend of the CYCLONES
			NEVO MEAT COMPANY L.E. NEKOLA EUIL VOTROUBEK Cedar Rapids
			A Friend of the CYCLONES
			BRUCE YUNGGLAS Webster City
			A Friend of the CYCLONES
			ZEIDLER, INC. Waterloo
			A Friend of the CYCLONES
			ARTHUR H. NEUMANN & BROS., INC. Des Moines
			A Friend of the CYCLONES
			NEVO MEAT COMPANY L.E. NEKOLA EUIL VOTROUBEK Cedar Rapids
			A Friend of the CYCLONES
			BRUCE YUNGGLAS Webster City
			A Friend of the CYCLONES
			ZEIDLER, INC. Waterloo
			A Friend of the CYCLONES
			ARTHUR H. NEUMANN & BROS., INC. Des Moines
			A Friend of the CYCLONES
			NEVO MEAT COMPANY L.E. NEKOLA EUIL VOTROUBEK Cedar Rapids
			A Friend of the CYCLONES
			BRUCE YUNGGLAS Webster City
			A Friend of the CYCLONES
			ZEIDLER, INC. Waterloo
			A Friend of the CYCLONES
			ARTHUR H. NEUMANN & BROS., INC. Des Moines
			A Friend of the CYCLONES
			NEVO MEAT COMPANY L.E. NEKOLA EUIL VOTROUBEK Cedar Rapids
			A Friend of the CYCLONES
			BRUCE YUNGGLAS Webster City
			A Friend of the CYCLONES
			ZEIDLER, INC. Waterloo
			A Friend of the CYCLONES
			ARTHUR H. NEUMANN & BROS., INC. Des Moines
			A Friend of the CYCLONES
			NEVO MEAT COMPANY L.E. NEKOLA EUIL VOTROUBEK Cedar Rapids
			A Friend of the CYCLONES
			BRUCE YUNGGLAS Webster City
			A Friend of the CYCLONES
			ZEIDLER, INC. Waterloo
			A Friend of the CYCLONES
			ARTHUR H. NEUMANN & BROS., INC. Des Moines
			A Friend of the CYCLONES
			NEVO MEAT COMPANY L.E. NEKOLA EUIL VOTROUBEK Cedar Rapids
			A Friend of the CYCLONES
			BRUCE YUNGGLAS Webster City
			A Friend of the CYCLONES
			ZEIDLER, INC. Waterloo
			A Friend of the CYCLONES
			ARTHUR H. NEUMANN & BROS., INC. Des Moines
			A Friend of the CYCLONES
			NEVO MEAT COMPANY L.E. NEKOLA EUIL VOTROUBEK Cedar Rapids
			A Friend of the CYCLONES
			BRUCE YUNGGLAS Webster City
			A Friend of the CYCLONES
			ZEIDLER, INC. Waterloo
			A Friend of the CYCLONES
			ARTHUR H. NEUMANN & BROS., INC. Des Moines
			A Friend of the CYCLONES
			NEVO MEAT COMPANY L.E. NEKOLA EUIL VOTROUBEK Cedar Rapids
			A Friend of the CYCLONES
			BRUCE YUNGGLAS Webster City
			A Friend of the CYCLONES
			ZEIDLER, INC. Waterloo
			A Friend of the CYCLONES
			ARTHUR H. NEUMANN & BROS., INC. Des Moines
			A Friend of the CYCLONES
			NEVO MEAT COMPANY L.E. NEKOLA EUIL VOTROUBEK Cedar Rapids
			A Friend of the CYCLONES
			BRUCE YUNGGLAS Webster City
			A Friend of the CYCLONES
			ZEIDLER, INC. Waterloo
			A Friend of the CYCLONES
			ARTHUR H. NEUMANN & BROS., INC. Des Moines
			A Friend of the CYCLONES
			NEVO MEAT COMPANY L.E. NEKOLA EUIL VOTROUBEK Cedar Rapids
			A Friend of the CYCLONES
			BRUCE YUNGGLAS Webster City
			A Friend of the CYCLONES
			ZEIDLER, INC. Waterloo
			A Friend of the CYCLONES
			ARTHUR H. NEUMANN & BROS., INC. Des Moines
			A Friend of the CYCLONES
			NEVO MEAT COMPANY L.E. NEKOLA EUIL VOTROUBEK Cedar Rapids
			A Friend of the CYCLONES
			BRUCE YUNGGLAS Webster City
			A Friend of the CYCLONES
			ZEIDLER, INC. Waterloo
			A Friend of the CYCLONES
			ARTHUR H. NEUMANN & BROS., INC. Des Moines
			A Friend of the CYCLONES
			NEVO MEAT COMPANY L.E. NEKOLA EUIL VOTROUBEK Cedar Rapids
			A Friend of the CYCLONES
			BRUCE YUNGGLAS Webster City
			A Friend of the CYCLONES
			ZEIDLER, INC. Waterloo
			A Friend of the CYCLONES
			ARTHUR H. NEUMANN & BROS., INC. Des Moines
			A Friend of the CYCLONES
			NEVO MEAT COMPANY L.E. NEKOLA EUIL VOTROUBEK Cedar Rapids
			A Friend of the CYCLONES
			BRUCE YUNGGLAS Webster City
			A Friend of the CYCLONES
			ZEIDLER, INC. Waterloo
			A Friend of the CYCLONES
			ARTHUR H. NEUMANN & BROS., INC. Des Moines
			A Friend of the CYCLONES
			NEVO MEAT COMPANY L.E. NEKOLA EUIL VOTROUBEK Cedar Rapids
			A Friend of the CYCLONES
			BRUCE YUNGGLAS Webster City
			A Friend of the CYCLONES
			ZEIDLER, INC. Waterloo
			A Friend of the CYCLONES
			ARTHUR H. NEUMANN & BROS., INC. Des Moines
			A Friend of the CYCLONES
			NEVO MEAT COMPANY L.E. NEKOLA EUIL VOTROUBEK Cedar Rapids
			A Friend of the CYCLONES
			BRUCE YUNGGLAS Webster City
			A Friend of the CYCLONES
			ZEIDLER, INC. Waterloo
			A Friend of the CYCLONES
			ARTHUR H. NEUMANN & BROS., INC. Des Moines
			A Friend of the CYCLONES
			NEVO MEAT COMPANY L.E. NEKOLA EUIL VOTROUBE

FIREPLACES



Gas Logs & Accessories

MASONRY MATERIALS

Brick • Block • Stone
Colored Cement

RAILROAD MATERIALS

Rails
Ties (New & Used)

STEEL PRODUCTS

Rebar • Wire Mesh
Nails • Fence Material
Masonry Wall
Reinforcement

GRAROK

Mortar Mix Manufacturer



D.A. Wilson COMPANY

AMES, IOWA 50010

(HOME OFFICE)
(515) 233-2436

DES MOINES, IOWA

(515) 282-6634

Material Supply Specialists

"SERVING IOWA AND THE GREATER MIDWEST"



State's 250 Club

A fast growing level of giving for Cyclone athletics - the Department of Intercollegiate Athletics salutes these individuals and firms who contribute a minimum of \$250 per year in support of the ISU athletic scholarship program.

FRANK BURNS JR. Des Moines	GOODMAN MILLING, INC. State Center	DR. C. D. LEE Ames	RICHTER STOCK FARMS Reinbeck
BURNS, FITZGERALD REALTY Pocahontas	HAAKINSON & BEATY CO. INC. Sioux City	DR. MERLE LOCKWOOD Charles City	WILLIAM J. RICKERT Waterloo
ROBERT CAMBLIN Atlantic	SAMUEL C. HAMILTON Austin, Texas	HOWARD LOEHR Callender	G.E. ROBERTS & SON Hubbard
CENTRAL STATES ROOFING CO. Ames	DR. KEITH L. HANSEN Hampton	ROBERT LOOMIS Fort Dodge	LAWRENCE ROCK Elliott
PAUL R. CHINGREN Pilot Mound	HAP'S AIR SERVICE Ames	DR. ELDON K. LOWARY Ames	DR. MARTIN ROEPKE Oskaloosa
ANDY CHRISTENSEN Ames	DR. JAN HAUGEN Ames	MIKE LYNCH Boone	DR. LEE E. ROSEBROOK Ames
CHRISTIAN and GRANZOW Roland	HERB'S PHILLIPS 66 Ames	DR. RICHARD F. MARSHALL Des Moines	WILBUR B. ROYER Dallas Center
EARL A. CLABAUGH Humboldt	HENKEL CONST. CO. Mason City	GENE M. MASON Cedar Rapids	EVERETT N. SATHER Des Moines
COE'S HOUSE OF FLOWERS Ames	HERRALD DRUGSTORE Boone	McATEE TIRE SERVICE, Inc. Jefferson	SCHROEDER FUNERAL HOME Boone
MARLIN R. CONE Prairie Village, Ks.	HUBBELL BROTHERS TRUST Des Moines	McDOWELL'S INS. AGENCY, INC. Ames	SECURITY STATE BANK Casey
CONTEMPORARY COMPLIMENTS, INC. Des Moines	HUMES DISTRIBUTING, INC. Fort Dodge	HAROLD McKINNEY Des Moines	SENECA CORP. Des Moines
RUSS COPLEY Ankeny	MYRON E. HUNZEKER Peoria, Ill.	MEADOW LANE MOBILE HOME PARK Ames	CLYDE E. SHUGART Perry Hall, Md.
ED CUNNINGHAM Des Moines	IOWA MOLD TOOLING CO. INC. Garner	PAUL J. MEGINNIS, II Des Moines	SILVER SADDLE MOTEL Ames
DR. WAYNE DANKER Dows	IOWA SAVINGS BANK Coon Rapids	WALTER N. MILLER Ames	JAMES H. SINNING Melbourne
DES MOINES SAVINGS and LOAN Des Moines	IOWA STATE SAVINGS BANK Knoxville	WAYNE MILLIKEN Ames	S-M-B STAGE LINES Des Moines
RON DOBBE Huxley	IOWA SUPPLY CO. Des Moines	MOELLER FARMS, INC. Boone	EARL S. SPENCER Waterloo
DR. THOMAS J. DRY Ames	HOWARD JESPERSON, JR. Ames	JOHN MORTIMER Dallas Center	DR. ROBERT SPROWELL Ames
DR. LLOYD C. DUMENIL Ames	JAMES W. JOHN Des Moines	MUELLER CONST., INC. Marshalltown	ROBERT W. STAFFORD Ames
J. HOWARD DUNN Oakmont, Penn.	JOHNSON'S CLOTHING CO. Ames	JAMES J. MULVILL, JR. Ames	STENBERG CONCRETE CONST. Ames
DURLAM & DURLAM, INC. Ames	DR. CHARLES JONS Ames	HOWARD A. NELSON Pilot Mound	DR. JACK D. STOAKES Goldfield
EMERSON VET CLINIC Eagle Grove	ROGER JOHNSON Des Moines	HOLLIS J. NORDYKE Ames	STUDENT SUPPLY STORE Ames
ENVELOPE HOUSE Des Moines	KEENAN AND STEVERMER Ames	NORTHERN CONTRACTING CORP. Clear Lake	CLYDE STUNTZ Greene
ROBERT C. FELLINGER Ames	KEISTER LUMBER CO. Coon Rapids	NUZUM LINCOLN MERCURY Ames	TAYLOR INDUSTRIES, INC. Des Moines
ROBERT E. FISHER Story City	ART KETELSEN Ames	OELWEIN STATE BANK Oelwein	MARTIN TELLEEN Gowrie
ROBERT L. FOX Minburn	KING-BOLE, INC. Des Moines	PASLEY, SINGER, SEISER, PASLEY & HOLM Ames	THORP FARM SUPPLY Coon Rapids
FRANCK-WENGERT PLMBG. & HTNG. Ames	DONALD B. KLUCKING Webster City	PAYER & GIBBONS Ames	BILL & SALLY TRYON Ames
DAVID C. GARFIELD Saddle River N. J.	W. A. KLUCKMAN Boone	POLK CO. FEDERAL SAVINGS & LOAN ASSOC. of DES MOINES Des Moines	UNITED HOME BANK & TRUST CO. Mason City
DR. JAMES H. GARNER, JR. Leawood, Kansas	KOSS CONSTRUCTION CO. Des Moines	PRO MI CO. INC. Eagle Grove	UNITED REAL ESTATE Ames
GRAY REAL ESTATE CO. Ames	ART KUHN Ames	GEORGE M. PUTNAM Des Moines	CHARLES VOGT Overland Park, Ks.
	GEORGE A. LAMAIR, JR. Des Moines	JOHN T. QUINN Davenport	WATERLOO SAVINGS BANK Waterloo
		ERWIN L. REDMILES & ASSOC. Ames	WAVERLY FARM SUPPLY Waverly
		DR. KENNETH REIMER Elkader	JERRY WEBBER Carroll
			GENE WEISE Manning
			HERB WILLIAMSON Parkersburg
			MYRON F. WILSON Dallas, Texas

**Welcome
Alumni!**



THE ISU ALUMNI ASSOCIATION

Welcomes All Iowa Staters To
Homecoming '76

Classes of '41, '46, '51, '56, '61
and '66 are holding reunions

We pay special tribute to these Honor Classes!

An Invitation--After-game Reception
All alumni and friends of Iowa State are invited for
free coffee, cider and doughnuts in Scheman Continu-
ing Education Building immediately following the
game. Cash bar available. Come and visit with old
friends and former teachers.





CY'S FAVORITE ALUM

Iowa State University today is proud to introduce Cy's Favorite Alum for the 1976 Bicentennial Year -- Robert A. Wright of Carroll.

This award, originated 21 years ago, is an honor bestowed with distinction upon an Iowa



Stater who has demonstrated outstanding devotion to the University and its department of intercollegiate athletics.

Bob Wright is one of Iowa State's most enthusiastic alums. A staunch disciple of the Cyclone athletic teams and programs, he also is perhaps one of the most consistent patrons of the wide variety of cultural events presented regularly in the Iowa State Center.

A cattle feeder and grain farmer, Wright is a lifetime member of the ISU Alumni Association, serves on the board of governors of the ISU Foundation, and with Mrs. Wright, is a member of the Order of the Knoll. He is a Gold full scholarship contributor to the Iowa State athletic program.

His activities in support of the University have included fund raising efforts for construction of the Iowa State Center and the new football stadium.

Cy's Favorite Alum, though a native of Carroll County, spent 31 years (1909-40) in Canada where he raised wheat and cattle. During three of those winters in Canada he returned to Iowa State to study agriculture. He was a University of Chicago student before going north. In Canada, he was president of the Western Canadian Livestock Union, an agricultural director of the Bank of Canada, vice president of the Canadian Chamber of Commerce, and a member of the Dominion Livestock Marketing Commission.

He returned to Carroll in 1942 and has engaged in farming since that time. He operated the Burke Motor Inn in Carroll for 18 years. He has been a director of the Iowa Taxpayers Association, a member of the agricultural committee of the U. S. Chamber of Commerce, and serves as a director of the Living History Farms near Des Moines.

It is our pleasure to add Bob Wright's name to the distinguished roster of Cy's Favorite Alums at Iowa State.

ISU NAVAL ROTC

Toys for Tots

COLLECTION



I.S.U. vs. Nebraska
November 13

"Bring A Toy For A Tot"
(New Or Usable Toys For Ages 1-14)
To Be Collected At The Gates
By ISU Midshipmen

Recipients: Ames Appalacia Committee

BEAT KANSAS STATE!!!!

Discover

A pub that's the sensible choice for those whose affairs
require a serene atmosphere.



THAT PLACE

THE AUSTRALIAN PUB

The establishment that Mad Magazine
could call "One of the Eight Great Pubs
of the World" --- But they don't.



AFTER THE GAME, COME --- ENJOY THE GRACIOUS ATMOSPHERE - SET IN THE
DELIGHTFUL PERIOD OF LATE HALLOWEEN/EARLY W. C. FIELDS.

Tell the General Manager (Mr. David Wilson) that you heard the place recommended
by Spiro Agnew----- and see where that gets you.

AMES, CONRAD (Yes, Conrad) AND THE WORLD
203 MAIN, AMES ON THE WEST SIDE OF GOLD'S Veritable Quandry
OPEN 4:30 P.M.

HOMECOMING

Central Committee

The Iowa State University students pictured here have been working all fall to finalize plans for the 1976 ISU Homecoming to be observed on the weekend of Oct. 29-30.

In addition to the Iowa State-Kansas State Big Eight Conference football game a host of other activities have been planned for returning alumni and friends.

Following the football game, there will be a coffee hour in the Scheman Building and alumni dinners as arranged.

Les Elgart will feature the big band sound for the Homecoming Dance at 9 p.m. in the Hilton. For those who like other entertainment, the ISU Players will present "Oklahoma" in the Fisher Theater at 8 p.m.



Top row (L. to R.) Dean Clasen, Tim Wolf, Brad Myers, John Siebel, Doug Lovejoy, Chip De Buse, John Shinnars, Paul Huser, and Julie Thurnau, third row (L. to R.) Connie Prehn, Anne Dakovich, Kelly O'Reilly, Janet McConnell, Diane Erickson, Margy Layton, Kathy Baker, and Linda Reddel, second row (L. to R.) Jeff Trochuck, Sandy Hubbert, Melinda Sonquist, Dean Shepard, Bruce Barringer, Karla Fennema, Jane Mellang, Sharon Soarholtz, and Kent McNeley, front row (L. to R.) Pete Hemken, Bill Stauch, Laura Hunter, Randy Hunter, Steve De Grosse, Sally Schubat, and Renee Birkicht.

Not pictured are: Dan Jacobson, John Witaker, Bill Pool, Ann Hendrickson, Chris MaLarkey, Andrea Boysen, Steve Doerfler and Becky Saggau.



ISU Minute Men Completing Successful Year

A year ago, with the start of football season for 1975, the Iowa State University Army ROTC unit instituted a Minute Man contingent to appear at athletic and community events. All through the Bicentennial Year of 1976, this group has marched in many Iowa towns and cities to help commemorate the 200th birthday of the United

States. As the year draws to a close so will the activity of the ROTC Colonial Soliders.

Serving in the group, when this early picture was taken, were Bill Hanson, Emmtsburg, kneeling; from left to right, standing, are Pete Murphy, Des Moines; Brian Moore, Omaha, Nebr.; Bill Dinkler, Indianola, and Scott Zima, Boone.

The IOWA STATE CENTER

Presents

—TONIGHT—

Les Elgart and His Band

Hilton Coliseum \$4 9 p.m. - 1 a.m.

The Eagles

Hilton Coliseum \$8, \$7, \$6 8 p.m.
Wednesday, Nov. 10 (Sponsored by Homecoming)

Harry James and His Band

Stephens Auditorium \$5, \$4, \$3
Friday, Nov. 12 8 p.m.

For Ticket Information
Write Center Ticket Office
Or Call 294-2436



CARTER PRESS Inc.

*Fine Printing
and Lithographing*

AMES