

OVERLAND '76



HOME COMING

IOWA STATE KANSAS STATE

October 30, 1976



One Dollar

THE AMALGAMATED SPIRIT & PROVISION CO.

Featuring-
Alaska king crab,
prime rib and steaks
of highest quality.

Join us for lunch
or dinner, seven nights
a week.
320 South 16th St.
(just west of
Warehouse Market)



PURVEYORS OF DISTILLED SPIRITS & FOODS OF HIGHEST QUALITY



REFLECTIONS

AMES' FINEST NIGHTSPOT
and DISCOTHEQUE

OPEN 6 NIGHTS A WEEK
4 p.m. til closing —

OPEN at 10:30 a.m.
GAME DAYS

414 Lincoln Way

Ames, Iowa

Ames, Iowa
Gardena, California
Roanoke, Virginia

Collegiate Pacific

ISU
GO
CYCLONES!



Contents

ISU Administration	3
ISU Coaching Staff	5
ISU - Kansas State Game Story	7
Same Old Wrestling Outlook: Bright	10
Big Eight Schedule & Results	11
Cardinal & Gold Scholarship Contributors	14-15
State's 250 Club	17
Cy's Favorite Alum	19
Cyclones	25-30
ISU Roster	32
Starting Lineups	Center Spread
Kansas State Roster	33
About Kansas State University	37
Wildcats	38-39
Cyclone Century Club	41-44
ISU Athletic Department	63

COVER

Pictured on the cover are the 1976 Cyclone Quad-captains: left to right - Don Greenwood, Tony Hawkins, Wayne Stanley and Mike Stensrud.

The 1976 Earle Bruce Show

Tune in each week during the season for exciting film highlights of the game . . . plus commentary and color on the week's action from Coach Earle Bruce and Sports caster Pete Taylor.

A presentation of



Bankers Trust

KCCI-TV Des Moines 10:30 PM Sundays
KCAU-TV Sioux City 10:30 PM Sundays
KGLO-TV Mason City 10:30 PM Mondays



ADMINISTRATION



DR. W. ROBERT PARKS
President
Iowa State University



JOHN MAHLSTEDE
Chairman, Faculty
Representative to the
Big Eight Conference



LOU McCULLOUGH
Director of Athletics
Iowa State University



BOB MARCUM
Associate
Director of Athletics

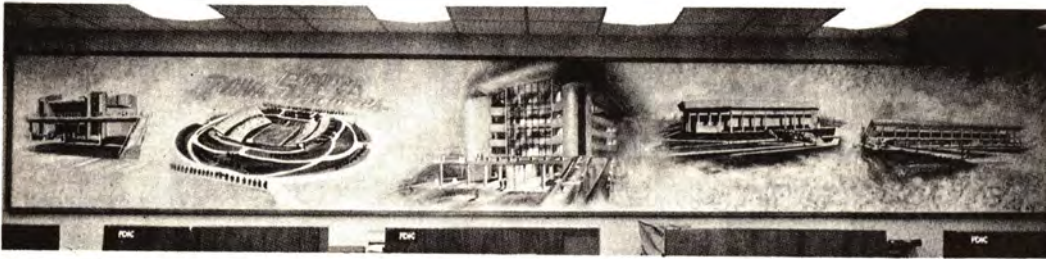


MAX URICK
Assistant
Director of Athletics

BOARD of REGENTS

Front Row: S.J. Brownlee, Steve E. Zumbach, Donald H. Shaw, John Baldrige. Back Row: Ray Bailey, Mrs. Robert Collison, Mrs. H. Rand Petersen, Harry Slife, Stanley Barber.





Be sure to stop in and see our beautiful painted mural of the Iowa State Center.

For 60 consecutive football seasons
The UNIVERSITY BANK "TEAM" has enjoyed
serving Iowa State students, faculty and staff.
To Coach Earle Bruce and his team
go our best wishes for the 1976
Cyclone Football Season!



UNIVERSITY

BANK AND TRUST COMPANY

MEMBER F. D. I. C.

CAMPUSTOWN/LINCOLN WAY AT HAYWARD AVENUE ■ DOWNTOWN/MAIN STREET AND GRAND AVENUE

BENSON MOTORS



BUICK

OPEL



American Motors
Corporation

Jeep



TRUCKS

NEW CARS — 5th and Douglas

USED CARS — 228 South Duff

CYCLONE COACHING STAFF



Front Row (l to r) Pete Rodriguez, Tom Lichtenberg, Earle Bruce, Randy Hart and Bob Tucker. Back: Jim Williams, Tom Vaughn, Charlie Lyle, Glen Mason and Keith Kephart.

Head Coach Earle Bruce is in his fourth year at Iowa State and after over 20 years of coaching on the high school and collegiate levels is recognized as one of the finest coaches in the business.

Bruce, who last January coached the East team to a 16-0 win in the Hulu Bowl for the first shut-out in 30 years, was three times the Ohio prep "Coach of the Year" before becoming an assistant at Ohio State. He became head coach at Tampa in 1972 and led the Spartans to a 10-2 record and bowl victory.

Pete Rodriguez is in his first year as defensive coordinator and linebacker coach. He came to ISU from Florida State, where he had the same responsibilities. Rodriguez has a top coaching background, working at Arizona and going to the Sun Bowl and spending five years at Western Illinois and going 39-13. He is a graduate of Western State in Colorado and coached two years in the Colorado prep ranks.

Tom Lichtenberg coaches the Cyclone quarterbacks and wide receivers. He is in his third year on the staff after coaching at Morehead (Ky.) State and spending 13 years in the Ohio prep ranks. He is a 1962 graduate of Louisville.

Randy Hart directs the ISU defensive tackles and middle guards, his third year with those duties after coaching the freshman team for one season. He had previously coached at Tampa for one year. He is a 1970 graduate of Ohio State and has played in the Rose Bowl.

Bob Tucker coaches the defensive ends at Iowa State and is one of the original members of Bruce's ISU staff, coming in 1973 after four years at Wichita State. He is a 1965 graduate of Wooster College and coaches Ohio high school football before moving to Wichita.

Jim Williams begins his first year on the Iowa State staff after becoming the most successful coach in Iowa high school history. In 12 years at Des Moines Dowling High, Williams led the Maroons to a 105-9-1 record and earned numerous coaching honors. His overall prep record, including stays at Audubon and East Dubuque, Ill., is 181-21-3. Dowling never lost a Metro-Conference game under Williams (56-0) and once had a 47-game winning streak.

Tom Vaughn, a former All-America at Iowa State in 1964, is in his second year as coach of

the ISU running backs. Vaughn spent seven years in the NFL with the Detroit Lions before joining the coaching ranks with Wayne State University and the Detroit Wheels of the WFL. Also an academic All-America during his playing days, Vaughn is considered by many to be the best all-around back in school history.

Charlie Lyle coaches the Cyclone secondary, his fifth year on Bruce's staff and fourth year at Iowa State. A 1962 graduate of Tampa, Lyle coached in the Florida high school ranks before moving to Tampa as the secondary coach. His Spartan unit ranked nationally.

Glen Mason is in his second year at Iowa State as the offensive tackle and tight end coach. Mason came to ISU from Ball State and has also coached at Allegheny College. He is a 1971 graduate of Ohio State, playing on Big Ten title teams.

Keith Kephart has been on the ISU staff since 1968 and is in his third year of the junior varsity head coach. The 1966 graduate of Dubuque has also played a major role in the Cyclones' recruiting efforts since his arrival and was the recruiting coordinator for several years.

DES MOINES, IOWA

**PROUD HOME OF CYCLONES
MARK WILLIAMS AND MIKE SCHWARTZ**



20 -MIKE SCHWARTZ • 16 -MARK WILLIAMS

**THESE FOLLOWING DES MOINES BOOSTERS ARE BACKING
THE 1976 IOWA STATE CYCLONES** —

PLASTIC SUPPLY, INC.
Chuck Irvine

DES MOINES COLD STORAGE CO.
Chuck Muelhaupt

GIBBS/COOK

JACOBSON WAREHOUSE COMPANY
Dick Jacobson-Larry Larson

CONTRACTORS STEEL CORPORATION
Warren Sparks

MASSEY-FERGUSON INC.

MID-CONTINENT BOTTLERS

BOB BROWN CHEVROLET

DES MOINES AGENCY--EQUITABLE OF IOWA
Jack Hilmes

MAINLINE EQUIPMENT COMPANY
Nick Dozoryst

Iowa State Kansas State



Saturday, October 30, 1976

Ames, Iowa

Cyclones Seek to Rebound Today

Homecoming and the chance to stay alive in the topsy-turvy Big Eight football race are two of the incentives today as Iowa State faces Kansas State.

Both teams are seeking to recover from losses last week, the Cyclones dropping a 33-14 game to Colorado while Kansas State bowed to intra-state rival Kansas, 28-14.

Iowa State has a 5-2 record, 1-2 in league play, and is still very much in the league race as every team has at least one loss. Five teams -- Oklahoma, Nebraska, Colorado, Missouri and Oklahoma State -- are at 2-1 while Kansas and I-State are 1-2 and KSU is 0-3.

The Cyclones bumped the Wildcats, 23-18, two years ago in its last Homecoming game in Clyde Williams Field and today's crowd should be in the 43,000 range, making it the second largest to date in the new complex.

Iowa State brings one of the most productive offenses in the nation into the game, ranking among the top 10 in total offense with a near perfect balance of running and passing.

The Cyclones have gained 1,229 net yards passing and 1,839 net yards rushing while scor-

ing 18 touchdowns through the air and 14 on the ground.

Kansas State boasts a tough defense headed by all-Big Eight linebacker Gary Spani, currently averaging over 15 tackles a game. Other Wildcat defensive leaders include Carl Pennington, Spani's running mate at linebacker, and nose guard Theophilis Bryant.

Kansas State has had more than its share of offensive problems, however, dating back to last spring when regular quarterback Joe Hatcher was lost by injury. The Wildcats have started an all freshman backfield this year, although veteran Roscoe Scobey will start today at tailback.

The Cyclone defense has been headed of late by tackle Tom Randall, linebackers Tom Boskey and Mark Benda and an alert secondary paced by safety Tony Hawkins.

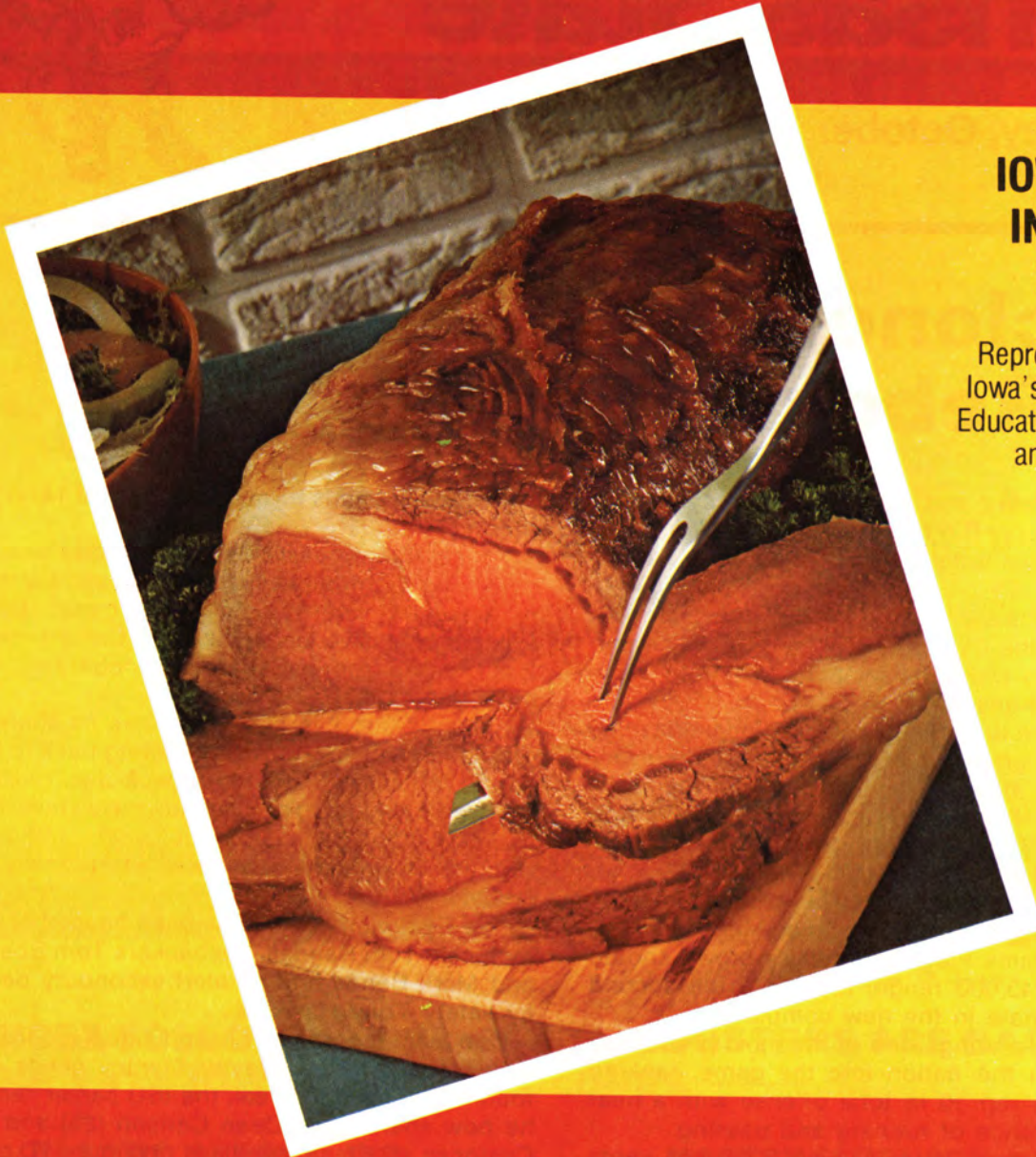
One team record and one individual record are within reach today. Wayne Stanley needs one touchdown pass to break the ISU career record he now shares with Dean Carlson (25) and the Cyclones as a team need just one more TD pass to crack the team record of 18 set in 1971.

Let's Go State!

CYCLONE FOOTBALL 1976

BEEF UP YOUR OWN TRAINING TABLE

SERVE FLAVORFUL IOWA CORN-FED BEEF



IOWA BEEF INDUSTRY COUNCIL

Representing all of
Iowa's Cattlemen in
Education, Research
and Promotion.

Jim Mullins
Chairman

GO CYCLONES

**GO
CYCLONES**



**CYCLONE
BOOSTERS**

AIR CONDITIONING, INC. (A.C.I.)
AMES STATIONERS
ARCHIES GOODYEAR SHOE REPAIR
107 WELCH
CENTRAL STATES ROOFING
CHEF'S INN
DURLAM & DURLAM
EVERT'S FLOWERS, INC.
HEINRICH ENVELOPE, INC.
Boone, Ia.
H.L. MUNN LUMBER
HUNZIKER & FURMAN REALTY
J4 ROLLAWAY
JAMES THOMPSON & SONS
McFARLAND CLINIC
MIDWEST TRANSPORTATION, INC.
NIMS SPORTSMAN'S OF AMES
RATLIFF SPUDNUT SHOP
SEARS
STUDENT SUPPLY
TODD & SARGENT, INC.
WOODWORTH D-X



A Cyclone Preview

Same Old Wrestling Outlook: Bright

It seems as though every year the pre-season outlook on Iowa State's wrestling team reads the same -- one of three contenders for the Big Eight championship, one of handful eyeing the NCAA trophy and expecting to win about 90%, if not 100%, of its dual matches.

It's the same story again, perhaps with a bit more punch this season than in the last couple years. The defending Big Eight champions and NCAA runners-up expect big things to happen.

Head Coach Harold Nichols is just one win away from his 300th Iowa State career dual victory, which should come Nov. 19 when the dual season opens at Drake. His teams have placed in the top three nationally 17 times in 20 years.

The Cyclones have a potent lineup despite losing the likes of Big Eight champions Bob Antonacci, Pete Galea and Willie Gadson.

Starting at the bottom, I-State features NCAA runner-up Johnnie Jones at 118 pounds, returning for his senior season. The likely replacement for Antonacci is redshirt sophomore Mike Land, an Olympic alternate last summer who placed sixth two years ago nationally at 118. Randy Nielsen, a Big Eight runner-up at 142, is expecting to drop to 134 where he could become a mainstay.

The 142 pound weight is one of the unsettled spots and how well it is filled could determine how the Cyclones stack up nationally. Joe Zuspahn, a hard-nosed junior, will drop from 158 to 150 this year with ease. He was third at 158 in last year's NCAA meet. Kelly Ward will likely man the 158 pound spot, moving up two weights from last year's 21-1-1 record. He has been exceptional in early workouts.

Big Eight champ Dave Powell is back at 167 while sophomore Rick Bickert and freshman Dave Allen are among the leaders to replace Gadson at 177. Frank Santana, second nationally last year while competing on a bad knee, is back at 190 while Bob Fouts and Rob Whisman will handle the bulk of heavyweight chores. Fouts was sixth in the NCAA.

There are a number of quality wrestlers that haven't been mentioned but who will no doubt play key roles as the season unfolds. If all this sounds good to you, it should be as the Cyclones gun for the NCAA championship this winter.

The biggest home meet of the year will undoubtedly be Feb. 19 when Iowa comes to the campus. Last year's dual drew 14,297 fans for an all-time national record.



HAROLD NICHOLS



FRANK SANTANA



JOHNNIE JONES

BIG 8 CONFERENCE

football schedule

1976 "BIG EIGHT" STANDINGS

ALL GAMES

Team	W	L	T
Oklahoma	5	1	1
Nebraska	5	1	1
Iowa State	5	2	0
Missouri	5	2	0
Colorado	5	2	0
Oklahoma State	5	2	0
Kansas	4	2	0
Kansas State	1	6	0

CONFERENCE

Team	W	L	T
Oklahoma	2	1	0
Nebraska	2	1	0
Missouri	2	1	0
Colorado	2	1	0
Oklahoma State	2	1	0
Iowa State	1	2	0
Kansas	1	2	0
Kansas State	0	3	0

1976 Games and Scores

SEPTEMBER 4

Kansas 28 Oregon State 16

SEPTEMBER 11

DRAKE 14 IOWA STATE 58

Brigham Young 3 Kansas State 13

Tulsa 21 Oklahoma State 33

Colorado 7 Texas Tech 24

Washington State 16 Kansas 35

Missouri 46 USC (N) 5

Nebraska 6 Louisiana State (N) 6

Oklahoma 24 Vanderbilt 3

SEPTEMBER 18

IOWA STATE 41 AIR FORCE 6

Kansas State 14 Texas A&M 34

Okla. State 10 Ark. 16

Colorado 21 Washigton 7

Kentucky 16 Kansas 38

Illinois 31 Missouri 6

Nebraska 45 Indiana 13

California 17 Oklahoma 28

SEPTEMBER 25

KENT STATE 7 IOWA STATE 47

Wake Forest 13 Kansas State 0

Miami(Fla.) 3 Colorado 33

Missouri 22 Ohio State 21

Texas Christian 10 Nebraska 64

Florida State 9 Okahoma 24

OCTOBER 2

OKLAHOMA 24 IOWA STATE 10

Kansas St. 10 Florida State 20

N. Texas St. 10 Okla. St. 16

Drake 24 Colorado 45

Wisconsin 24 Kansas 34

N. Carolina 3 Missouri 24

Miami (Fla.) 9 Nebraska 17

OCTOBER 9

UTAH 14 IOWA STATE 44

Missouri 28 Kansas State 21

Kansas 14 Oklahoma State 21

Nebraska 24 Colorado 12

Oklahoma 6 Texas 6

OCTOBER 16

IOWA STATE 21 MISSOURI 17

Kansas State 0 Nebraska 51

Colorado 20 Oklahoma State 10

Oklahoma 28 Kansas 10

OCTOBER 23

IOWA STATE 14 COLORADO 33

Kansas 24 Kansas State 14

Oklahoma State 31 Oklahoma 24

Missouri 34 Nebraska 24

OCTOBER 30

KANSAS STATE AT IOWA STATE

Missouri at Oklahoma State

Oklahoma at Colorado

Nebraska at Kansas

NOVEMBER 6

IOWA STATE AT KANSAS

Kansas State at Oklahoma

Oklahoma State at Nebraska

Colorado at Missouri

NOVEMBER 13

NEBRASKA AT IOWA STATE

Oklahoma St. at Kansas St.

Kansas at Colorado

Missouri at Oklahoma

NOVEMBER 20

IOWA STATE AT OKLAHOMA ST.

Colorado at Kansas State

Kansas at Missouri

NOVEMBER 26

Oklahoma at Nebraska (T-V)

NOVEMBER 27

Okla. St. at Texas-El Paso

DECEMBER 4

Nebraska at Hawaii(N)



Looking for a bank?

LOOK TO THE **FIRST!**



Member Federal Reserve System
and Federal Deposit Insurance
Corporation.

1st FIRST NATIONAL BANK

AMES, IOWA

2320 LINCOLN WAY
232-6530

5th & BURNETT
232-5561

GO CYCLONES!



Hy-Vee

FOOD STORES

AMES, IOWA

DOWNTOWN - 207 SO. DUFF

OPEN 7 A.M. - MIDNIGHT

CAMPUSTOWN - 112 SO. SHELDON

OPEN 8 A.M. - MIDNIGHT



AMES, IOWA

— HOME OF THE
IOWA STATE
CYCLONES

and
MIKE TRYON
Quarterback

THESE AMES BOOSTERS PROUDLY SUPPORT THE 1976 CYCLONES

Severson Insurance Agency
The Athletic Shoe
Ames Building and Loan
Paul R. Jones Heating and Cooling
Dale Tryon Real Estate
Sevde Transfer and Storage

Shaughnessy's Carpet and Drapery
Ev Cochrane Life Insurance
Bledsoe's
The Den
Aunt Maude's
Mayfair Cleaners

CARDINAL and GOLD Scholarship Program

IOWA STATE UNIVERSITY

Department of Intercollegiate Athletics

THE CARDINAL AND GOLD SCHOLARSHIP PROGRAM



Hundreds of student-athletes have had their education at Iowa State University financed through contributions of Cyclone Club members. More and more, the success of major college athletic programs is dependent upon the financial support of alumni and friends. The Iowa State University Department of Intercollegiate Athletics is proud to honor the individuals and firms on this page who have contributed one or more \$1,000 Gold Full Scholarships or \$500 for a Cardinal Half Scholarship.

Mal Schmidt



The Gold Full Scholarship Donors

CLINTON J. ADAMS Ames	FRANCE BETTEN TRANSPORTATION CO. Ames-Boone	RAYMOND HAGIE Clarion	RICHARD E. OLSON Des Moines
AMES ADVERTISER Ames	CARL BLUEDORN Waterloo	HARDEE'S RESTAURANTS Ames-Boone	PESTER DERRY OIL CO. Des Moines
AMES DAILY TRIBUNE Ames	LYDD AND ADA ROCK Des Moines	CHARLES HERBERT Des Moines	PLASTIC SUPPLY, INC. Des Moines
DR. RUSSELL H. ANTHONY Cedar Rapids	BOB BROWN CHEVROLET, INC. Des Moines	H.R. HILSTROM Sycamore, IL	MARVIN POMERANTZ Des Moines
A & W RESTAURANT Ames	DR. JAMES A. BUCK Ames	HOAK CONSTRUCTION CO. Des Moines	RUAN TRANSPORT CORP. Des Moines
RALPH AULMANN Memorial Scholarship Des Moines	WILLIAM W. BURRELL Knoxville	ROBERT HOLLWAGER Des Moines	SCHILDSBERG CONSTRUCTION CO. Grandfield
AUNT MAUDE'S Ames	WILLIAM E. CATRON Sandwich, Co.	HERMAN T. AND MARGARET B. HOLMES Newton	SEVRE TRANSFER & STORAGE Ames
DR. WILLIAM BAIRD Ames	CESSEFORD CONSTRUCTION CO. LeGrand	T.J. HOLMES Dayton, Ohio	CHARLES W. SHIREY Waterloo
ROBERT BARBER Cedar Rapids	CORN STAIN METAL FABRICATORS, INC. Des Moines	HUMBOLDT TRUST Savings Humboldt	C.W. SHIREY COMPANY Waterloo
DR. WILLIAM BARNETT Ames	RICHARD L. COX Ames	IOWA—DES MOINES NATIONAL BANK Des Moines	JAMES THOMPSON & SONS Ames
JAMES W. BELL CO. Cedar Rapids	DES MOINES ASPHALT & PAVING Des Moines	KARN'S ASSOCIATES Ames	DWIGHT L. TYRRELL Belmond
	DES MOINES COLD STORAGE CO. Des Moines	KENWORTH MID—IOWA, INC. Des Moines	UNION STORY TRUST & SAVINGS BANK Ames
	DES MOINES REGISTER & TRIBUNE Des Moines	KENTON CONSTRUCTION CO. Des Moines	UNIVERSITY BANK & TRUST Ames
	DR. JOHN DORAN Ames	KHAPP—TEDESCO INSURANCE AGENCY Ames	VAN W. BUSKIRK CONSTRUCTION CO. Sioux City
	E. M. DUESENBERG, INC. Des Moines	MICHAEL D. LARSON Des Moines	VAWTER & WALTER INC. Des Moines
	ECONOMY FORMS CORPORATION Des Moines	MCANICHOR CORP. Herkado	DR. DALE WASSMUTH Sioux City
	RAY A. ENGEL Marshalltown	MASSEY—FERGUSON, INC. Des Moines	WILSON CONCRETE CO. Red Oak
	EVERDS BROTHERS INC. Algona	RICHARD W. MAWE Manchester	FRED WINKLER & SONS Ames
	FEED SPECIALTIES CO. Des Moines	MID-CONTINENT INDUSTRIES, INC. Des Moines	WORLD WIDE TRAVEL CENTER Des Moines
	FEILEN MEAT COMPANY Des Moines	MIDLAND UNITED DAIRY INDUSTRY ASSOC. Ankeny	DEAN AND JO RUSSON Ames
	FIRST NATIONAL BANK Ames	MIDWEST INDUSTRIES Ida Grove	ROBERT A. WRIGHT Carroll
	DR. TOM GARTIN Ames	MIRACLE EQUIPMENT COMPANY Grimes	YOUNGER BROTHERS Des Moines
	GIBBS — COOK EQUIPMENT CO. Des Moines	NADEN INDUSTRIES Webster City	DR. DANIEL M. YOUNGBLAD Des Moines
	ED GLAZER Des Moines	FRED NESBIT DIST. CO. Des Moines	BRUCE YUNGGLAS Webster City
	GOMACO, INC. Ida Grove	ARTHUR H. NEUMANN & BROS., INC. Des Moines	ZEIDERS, INC. Waterloo
	GREEN CONSTRUCTION CO. Des Moines	NEVO MEAT COMPANY L.E. WEXOLA EMIL VOTROUBEK Cedar Rapids	A Friend of the CYCLONES
	R. E. GRIMM Slater	RALPH OLSEN Ellsworth	A Friend of the CYCLONES

The Cardinal Half Scholarship Donors

AID INSURANCE SERVICES Des Moines	CONTRACTOR STEEL CORP. Des Moines	HICKLIN GM DIESEL, INC. Des Moines	EUGENE E. MANNELLY Des Moines	SUNRISE DAIRY, INC. Des Moines
ALLAN MACHINERY SUPPLY, INC. Ames	COWIE FURS Des Moines	JACK HILMES Des Moines	MCCLURE ENGINEERING CORP. Fort Dodge	SYSTEMS MANAGEMENT & BALANCING, INC. Des Moines
AMERICAN FED. SAVINGS & LO. Des Moines	THEODORE M. COX Omaha	HOLMES MURPHY & ASSOC. Des Moines	PAUL MCCORKLE Sci City	THERMO—KING Des Moines
AMERICAN REP. INSURANCE CO. Des Moines	ORVILLE E. CROWLEY Des Moines	HOME FURNITURE & APPLIANCE Ames	MCDONALD'S—GOAL FOODS Ames	GARY THOMPSON OIL CO. Ames
AMES MILLWOL & SUPPLY CO. Ames	DR. CHAS. H. CUMMING Ames	GEORGE A. HORNEI Fort Du Sable	MCGLADNEY, HANSEN, DUNN & CO. Des Moines	ALAN TIEFENTHALER Breda
KENNETH R. ALI Des Moines	W.T. DAHL Des Moines	DEAN HUNZIKER Ames	MCGRATH FURNITURE and CARPET Nebraska	TODD AND SARGENT, INC. Ames
HANKER TRU COMPANY Des Moines	DEWITT IMPLEMENT CO. Ogden	E.A. HUNZIKER Ames	EDWIN T. MEREDITH, III Des Moines	HAROLD L. TOMPKINS Cedar Falls
WILLIAM G. BARR Des Moines	WITCH WITCH—IOWA, INC. Des Moines	INTERNATIONAL HARVESTER COMPANY Kansas City, Missouri	MUNN LUMBER COMPANY Ames	TUTTLE'S GAS AND APPLIANCE, INC. Ames
BAVARIAN BAR Restaurant & B. Des Moines	LYNN W. EASTER Des Moines	IOWA CONCRETE PRODUCTS Ames	NORTHWESTERN STATES PORTLAND CEMENT CO. Mason City	UNITED FEDERAL SAVINGS Des Moines
DAVID BEAR Des Moines	D. OBERST EDDY Des Moines	IOWA CORN BY—PRODUCTS CO. Cuba	J.J. PERPICH Des Moines	WAREHOUSE CARPET SALES Ames
RICHARD BILLER Grundy Center	EL FREDO PIZZA Ames	IOWA MANUFACTURING COMPANY Cedar Rapids	P & H STONE CO. Humboldt	WARREN TRANSPORT, INC. Waterloo
BLANKIN CONST. Companies Des Moines	EMPLOYERS MUTUAL Des Moines	IOWA POWER & LIGHT CO. Des Moines	PITTSBURGH DES MOINES STEEL Des Moines	WENDY'S Ames
DALE BOBBE MOTOM CO. Ames	FELDMAN, WALSH & STOWELL DENTAL OFFICES Ames	JACKSON CONSTRUCTION Herkado	WILLIAM AND JOANNE FISHER Cedar Falls	J.C. WHITE EXCAVATING COMPANY Des Moines
ROSWELL CONTRACTING CO. Sioux City	MAURICE FIELD Moorland	JENNINGS AGENCY Des Moines	PAUL W. POPPE Ames	WILKINS, RUSSARD & GILKS Des Moines
BRAND HYDRAULICS, H. Des Moines	FLETCHER—MOIST & CO. Des Moines	JENSEN CONSTRUCTION Des Moines	PETER E. PYCER Des Moines	GEORGE WILLIAMS Marshalltown
J. DWIGHT BROS. Adel	FREEMAN CORPORATION Des Moines	KENDALL GRIFFITH, RUSSELL ANTIGA Des Moines	RENDALL, JOHNSON, CROWLEY, INC. Des Moines	JAN & WAYNE WILSON Ames
WISE BURGUNDY Des Moines	FULTZ, LUCASSE and GREENLEE, INC. Des Moines	JOSEPH F. ROSENFELD Des Moines	DR. JOHN SALSBERY Clear Lake	L.S. "BUCK" WOOD Webster City
CAPITAL CITY STATE BANK Des Moines	GENERAL GROWTH DEVELOPMENT CORPORATION Des Moines	H. N. LARSON Ames	RALPH SCOTT Decor	A FRIEND OF THE CYCLONES
CARLIERE INSURANCE CO. Des Moines	GETTMANN CONSTRUCTION CO., INC. Marshalltown	JORDAN L. LARSON Ames	FRANK SEVERING Des Moines	A FRIEND OF THE CYCLONES
JOHN T. GILBERT Des Moines	CHARLES O. LAVEY Indianola	RICHARD S. LEVITT FOUNDATION Des Moines	SHARPE MECHANICAL, INC. Des Moines	
GIELLEFELD ASSOCIATES, INC. Forest City	JOHN T. GILBERT Des Moines	MAINLINE EQUIPMENT COMPANY Des Moines	JOHN SHIMON Belle	
CHIEF'S INN Ames	B.C. GRANAARD Des Moines	MARTIN MARITTA, AGGREGATES Cedar Rapids	BERNARD C. SIMMONS Waterloo	
LARRY G. CHISE Countryside, Calif.	DEANE GUNDERSON Belle	RANDALL and RUTH MATSON Ames	STARLITE VILLAGE & RESTAURANT Fort Dodge	
COOPER MFG. Marshalltown	JOHN R. HAGIE Clarion	EDWARD L. HENDRICKSON Ames	STEEL WAREHOUSING, INC. Des Moines	
COLONIAL HEAT & SWEET MEAT FL Dodge			SUNDSTRAND HYDRO—TRANSMISSION Ames	



FIREPLACES



Gas Logs & Accessories

MASONRY MATERIALS

Brick • Block • Stone
Colored Cement

RAILROAD MATERIALS

Rails
Ties (New & Used)

STEEL PRODUCTS

Rebar • Wire Mesh
Nails • Fence Material
Masonry Wall
Reinforcement

GRAROK

Mortar Mix Manufacturer



D.A. Wilson COMPANY

AMES, IOWA 50010

(HOME OFFICE)
(515) 233-2436

DES MOINES, IOWA

(515) 282-6634

Material Supply Specialists

"SERVING IOWA AND THE GREATER MIDWEST"



State's 250 Club

A fast growing level of giving for Cyclone athletics - the Department of Intercollegiate Athletics salutes these individuals and firms who contribute a minimum of \$250 per year in support of the ISU athletic scholarship program.

FRANK BURNS JR. Des Moines	GOODMAN MILLING, INC. State Center	DR. C. D. LEE Ames	RICHTER STOCK FARMS Reinbeck
BURNS, FITZGERALD REALTY Pocahontas	HAAKINSON & BEATY CO. INC. Sioux City	DR. MERLE LOCKWOOD Charles City	WILLIAM J. RICKERT Waterloo
ROBERT CAMBLIN Atlantic	SAMUEL C. HAMILTON Austin, Texas	HOWARD LOEHR Callender	G.E. ROBERTS & SON Hubbard
CENTRAL STATES ROOFING CO. Ames	DR. KEITH L. HANSEN Hampton	ROBERT LOOMIS Fort Dodge	LAWRENCE ROCK Elliott
PAUL R. CHINGREN Pilot Mound	HAP'S AIR SERVICE Ames	DR. ELDON K. LOWARY Ames	DR. MARTIN ROEPKE Oskaloosa
ANDY CHRISTENSEN Ames	DR. JAN HAUGEN Ames	MIKE LYNCH Boone	DR. LEE E. ROSEBROOK Ames
CHRISTIAN and GRANZOW Roland	HERB'S PHILLIPS 66 Ames	DR. RICHARD F. MARSHALL Des Moines	WILBUR B. ROYER Dallas Center
EARL A. CLABAUGH Humboldt	HENKEL CONST. CO. Mason City	GENE M. MASON Cedar Rapids	EVERETT N. SATHER Des Moines
COE'S HOUSE OF FLOWERS Ames	HERRALD DRUGSTORE Boone	McATEE TIRE SERVICE, Inc. Jefferson	SCHROEDER FUNERAL HOME Boone
MARLIN R. CONE Prairie Village, Ks.	HUBBELL BROTHERS TRUST Des Moines	McDOWELL'S INS. AGENCY, INC. Ames	SECURITY STATE BANK Casey
CONTEMPORARY COMPLIMENTS, INC. Des Moines	HUMES DISTRIBUTING, INC. Fort Dodge	HAROLD McKINNEY Des Moines	SENECA CORP. Des Moines
RUSS COPLEY Ankeny	MYRON E. HUNZEKER Peoria, Ill.	MEADOW LANE MOBILE HOME PARK Ames	CLYDE E. SHUGART Perry Hall, Md.
ED CUNNINGHAM Des Moines	IOWA MOLD TOOLING CO. INC. Garner	PAUL J. MEGINNIS, II Des Moines	SILVER SADDLE MOTEL Ames
DR. WAYNE DANKER Dows	IOWA SAVINGS BANK Coon Rapids	WALTER N. MILLER Ames	JAMES H. SINNING Melbourne
DES MOINES SAVINGS and LOAN Des Moines	IOWA STATE SAVINGS BANK Knoxville	WAYNE MILLIKEN Ames	S-M-B STAGE LINES Des Moines
RON DOBBE Huxley	IOWA SUPPLY CO. Des Moines	MOELLER FARMS, INC. Boone	EARL S. SPENCER Waterloo
DR. THOMAS J. DRY Ames	HOWARD JESPERSON, JR. Ames	JOHN MORTIMER Dallas Center	DR. ROBERT SPROWELL Ames
DR. LLOYD C. DUMENIL Ames	JAMES W. JOHN Des Moines	MUELLER CONST., INC. Marshalltown	ROBERT W. STAFFORD Ames
J. HOWARD DUNN Oakmont, Penn.	JOHNSON'S CLOTHING CO. Ames	JAMES J. MULVILL, JR. Ames	STENBERG CONCRETE CONST. Ames
DURLAM & DURLAM, INC. Ames	DR. CHARLES JONS Ames	HOWARD A. NELSON Pilot Mound	DR. JACK D. STOAKES Goldfield
EMERSON VET CLINIC Eagle Grove	ROGER JOHNSON Des Moines	HOLLIS J. NORDYKE Ames	STUDENT SUPPLY STORE Ames
ENVELOPE HOUSE Des Moines	KEENAN AND STEVERMER Ames	NORTHERN CONTRACTING CORP. Clear Lake	CLYDE STUNTZ Greene
ROBERT C. FELLINGER Ames	KEISTER LUMBER CO. Coon Rapids	NUZUM LINCOLN MERCURY Ames	TAYLOR INDUSTRIES, INC. Des Moines
ROBERT E. FISHER Story City	ART KETELSEN Ames	OELWEIN STATE BANK Oelwein	MARTIN TELLEEN Gowrie
ROBERT L. FOX Minburn	KING-BOLE, INC. Des Moines	PASLEY, SINGER, SEISER, PASLEY & HOLM Ames	THORP FARM SUPPLY Coon Rapids
FRANCK-WENGERT PLMBG. & HTNG. Ames	DONALD B. KLUCKING Webster City	PAYER & GIBBONS Ames	BILL & SALLY TRYON Ames
DAVID C. GARFIELD Saddle River N. J.	W. A. KLUCKMAN Boone	POLK CO. FEDERAL SAVINGS & LOAN ASSOC. of DES MOINES Des Moines	UNITED HOME BANK & TRUST CO. Mason City
DR. JAMES H. GARNER, JR. Leawood, Kansas	KOSS CONSTRUCTION CO. Des Moines	PRO MI CO. INC. Eagle Grove	UNITED REAL ESTATE Ames
GRAY REAL ESTATE CO. Ames	ART KUHN Ames	GEORGE M. PUTNAM Des Moines	CHARLES VOGT Overland Park, Ks.
	GEORGE A. LAMAIR, JR. Des Moines	JOHN T. QUINN Davenport	WATERLOO SAVINGS BANK Waterloo
		ERWIN L. REDMILES & ASSOC. Ames	WAVERLY FARM SUPPLY Waverly
		DR. KENNETH REIMER Elkader	JERRY WEBBER Carroll
			GENE WEISE Manning
			HERB WILLIAMSON Parkersburg
			MYRON F. WILSON Dallas, Texas

**Welcome
Alumni!**



THE ISU ALUMNI ASSOCIATION

Welcomes All Iowa Staters To
Homecoming '76

Classes of '41, '46, '51, '56, '61
and '66 are holding reunions

We pay special tribute to these Honor Classes!

An Invitation--After-game Reception
All alumni and friends of Iowa State are invited for
free coffee, cider and doughnuts in Scheman Continu-
ing Education Building immediately following the
game. Cash bar available. Come and visit with old
friends and former teachers.





CY'S FAVORITE ALUM

Iowa State University today is proud to introduce Cy's Favorite Alum for the 1976 Bicentennial Year -- Robert A. Wright of Carroll.

This award, originated 21 years ago, is an honor bestowed with distinction upon an Iowa



Stater who has demonstrated outstanding devotion to the University and its department of intercollegiate athletics.

Bob Wright is one of Iowa State's most enthusiastic alums. A staunch disciple of the Cyclone athletic teams and programs, he also is perhaps one of the most consistent patrons of the wide variety of cultural events presented regularly in the Iowa State Center.

A cattle feeder and grain farmer, Wright is a lifetime member of the ISU Alumni Association, serves on the board of governors of the ISU Foundation, and with Mrs. Wright, is a member of the Order of the Knoll. He is a Gold full scholarship contributor to the Iowa State athletic program.

His activities in support of the University have included fund raising efforts for construction of the Iowa State Center and the new football stadium.

Cy's Favorite Alum, though a native of Carroll County, spent 31 years (1909-40) in Canada where he raised wheat and cattle. During three of those winters in Canada he returned to Iowa State to study agriculture. He was a University of Chicago student before going north. In Canada, he was president of the Western Canadian Livestock Union, an agricultural director of the Bank of Canada, vice president of the Canadian Chamber of Commerce, and a member of the Dominion Livestock Marketing Commission.

He returned to Carroll in 1942 and has engaged in farming since that time. He operated the Burke Motor Inn in Carroll for 18 years. He has been a director of the Iowa Taxpayers Association, a member of the agricultural committee of the U. S. Chamber of Commerce, and serves as a director of the Living History Farms near Des Moines.

It is our pleasure to add Bob Wright's name to the distinguished roster of Cy's Favorite Alums at Iowa State.

ISU NAVAL ROTC

Toys for Tots

COLLECTION



I.S.U. vs. Nebraska
November 13

"Bring A Toy For A Tot"
(New Or Usable Toys For Ages 1-14)
To Be Collected At The Gates
By ISU Midshipmen

Recipients: Ames Appalacia Committee

BEAT KANSAS STATE!!!!

Discover

A pub that's the sensible choice for those whose affairs
require a serene atmosphere.



THAT PLACE

THE AUSTRALIAN PUB

The establishment that Mad Magazine
could call "One of the Eight Great Pubs
of the World" --- But they don't.



AFTER THE GAME, COME --- ENJOY THE GRACIOUS ATMOSPHERE - SET IN THE
DELIGHTFUL PERIOD OF LATE HALLOWEEN/EARLY W. C. FIELDS.

Tell the General Manager (Mr. David Wilson) that you heard the place recommended
by Spiro Agnew----- and see where that gets you.

AMES, CONRAD (Yes, Conrad) AND THE WORLD
203 MAIN, AMES ON THE WEST SIDE OF GOLD'S Veritable Quandry
OPEN 4:30 P.M.

HOMECOMING

Central Committee

The Iowa State University students pictured here have been working all fall to finalize plans for the 1976 ISU Homecoming to be observed on the weekend of Oct. 29-30.

In addition to the Iowa State-Kansas State Big Eight Conference football game a host of other activities have been planned for returning alumni and friends.

Following the football game, there will be a coffee hour in the Scheman Building and alumni dinners as arranged.

Les Elgart will feature the big band sound for the Homecoming Dance at 9 p.m. in the Hilton. For those who like other entertainment, the ISU Players will present "Oklahoma" in the Fisher Theater at 8 p.m.



Top row (L. to R.) Dean Clasen, Tim Wolf, Brad Myers, John Siebel, Doug Lovejoy, Chip De Buse, John Shinnars, Paul Huser, and Julie Thurnau, third row (L. to R.) Connie Prehn, Anne Dakovich, Kelly O'Reilly, Janet McConnell, Diane Erickson, Margy Layton, Kathy Baker, and Linda Reddel, second row (L. to R.) Jeff Trochuck, Sandy Hubbert, Melinda Sonquist, Dean Shepard, Bruce Barringer, Karla Fennema, Jane Mellang, Sharon Soarholtz, and Kent McNeley, front row (L. to R.) Pete Hemken, Bill Stauch, Laura Hunter, Randy Hunter, Steve De Grosse, Sally Schubert, and Renee Birkicht.

Not pictured are: Dan Jacobson, John Witaker, Bill Pool, Ann Hendrickson, Chris MaLarkey, Andrea Boysen, Steve Doerfler and Becky Saggau.



ISU Minute Men Completing Successful Year

A year ago, with the start of football season for 1975, the Iowa State University Army ROTC unit instituted a Minute Man contingent to appear at athletic and community events. All through the Bicentennial Year of 1976, this group has marched in many Iowa towns and cities to help commemorate the 200th birthday of the United

States. As the year draws to a close so will the activity of the ROTC Colonial Soliders.

Serving in the group, when this early picture was taken, were Bill Hanson, Emmtsburg, kneeling; from left to right, standing, are Pete Murphy, Des Moines; Brian Moore, Omaha, Nebr.; Bill Dinkler, Indianola, and Scott Zima, Boone.

The IOWA STATE CENTER

Presents

—TONIGHT—

Les Elgart and His Band

Hilton Coliseum \$4 9 p.m. - 1 a.m.

The Eagles

Hilton Coliseum \$8, \$7, \$6 8 p.m.
Wednesday, Nov. 10 (Sponsored by Homecoming)

Harry James and His Band

Stephens Auditorium \$5, \$4, \$3
Friday, Nov. 12 8 p.m.

For Ticket Information
Write Center Ticket Office
Or Call 294-2436



CARTER PRESS Inc.

*Fine Printing
and Lithographing*

AMES

Iowa State's Enrollment Highest in History

The largest enrollment in history 21,831 students, has been recorded at Iowa State University this fall.

The fall quarter enrollment exceeds the 1975 total by 626 students.

Largest increase is in the College of Engineering with 408 more students registered. The Graduate College is up by 273 and the College of Agriculture by 117. There were decreases in registrations in the Colleges of Home Economics and Sciences and Humanities.

The 21,831 represents the total number of Iowa State students enrolled in regular degree-granting programs.

An additional 612 students are taking Iowa State courses at various places throughout the state. This number includes 466 graduate and undergraduate students enrolled in 33 courses being taught this fall by university faculty members in 15 different towns and cities in the state. An additional 146 students are enrolled in the University of Mid-America courses being offered by television.

University officials indicated that the shortage of housing was a factor in enrollment this fall. Projected for addition next year are 32 additional buildings in Schilleter Village which will provide housing for 400 single students and 28 apartments for married students. These modular units are already under construction.

This fall's enrollment includes 1,498 men and 8,333 women.

Following is a summary of 1976 and 1975 enrollments:

	1976	1975
Agricultural engineering	138	128
Agriculture	3271	3154
Education	1317	1315
Engineering	3709	3301
Home Economics	2557	2691
Sciences & Humanities	7179	7245
Veterinary Medicine	397	381
Graduate College	3263	2990
	21,831	21,205

"Oklahoma" Tonight at Fisher

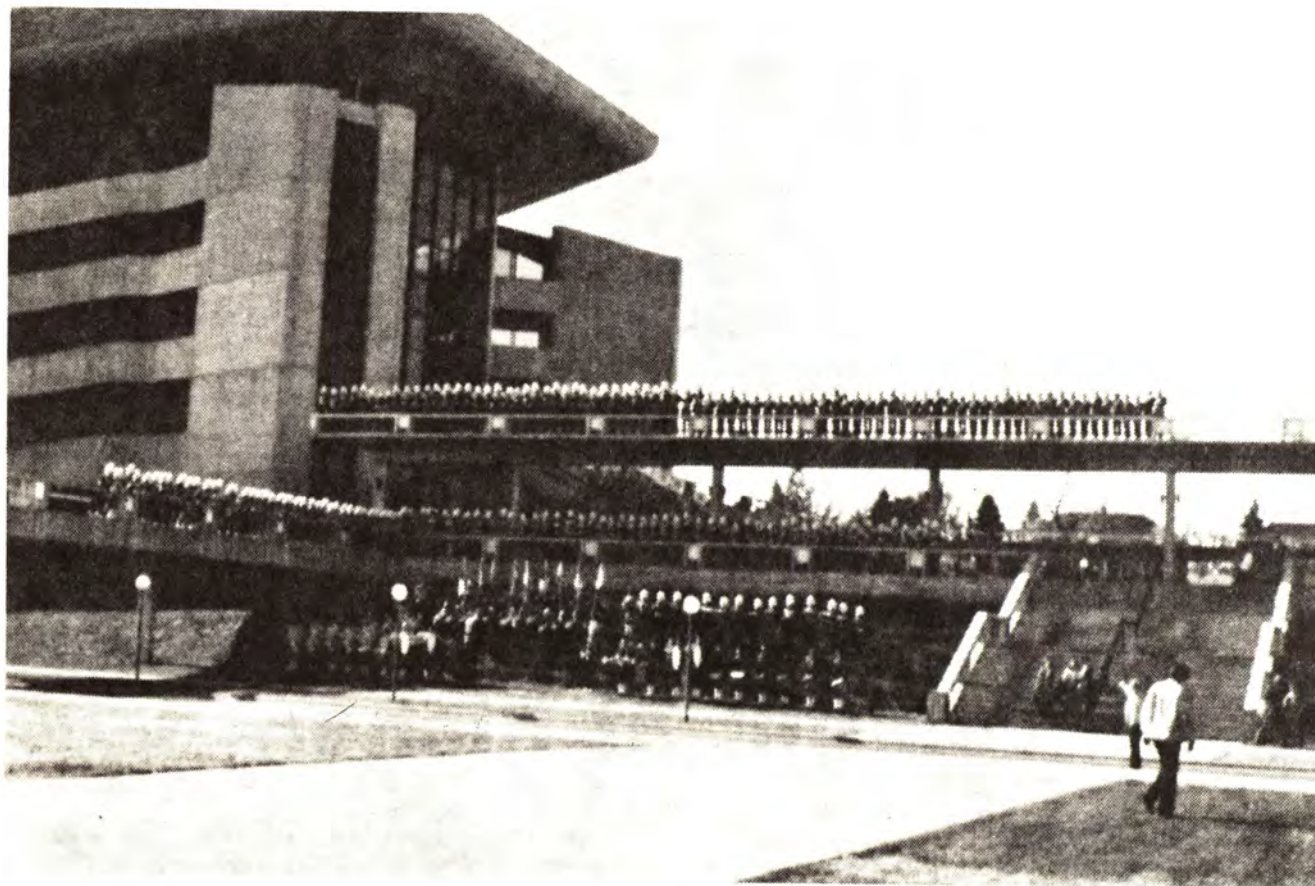
Oklahoma!, where territory folks stick together, cowboys dance with the farmers' daughters and ranchers dance with the farmers' gals, will be at Fisher Theater tonight and Nov. 4-6. Share the magic of the lovely, golden Oklahoma prairie where the June bugs zoom and the hawks make lazy circles in the sky. Enjoy the engaging spirited Americans who love and respect their land with plenty of air and plenty of room. Watch the energetic rollicking settlers turn the Indian Territory into our forty-sixth state.

I.S.U.'s Dance, Music, and Theatre Departments all contribute to this hearty, hopeful musical comedy. Phyllis Lepke of the Dance faculty choreographed the vital rhythms, Eric VanCamp of the Music faculty supervises the dynamic melodies, and David Waggoner of the Theatre faculty directs this most colorful folk

drama of Rodgers and Hammerstein. I.S.U. students portray favorite characters Aunt Eller, Curly, Laurey, Jud Fry, and Ado Annie who fill Fisher Theater with their infectious vitality.

Oklahoma! See it tonight and November 4 through 6. Tickets are \$3.00 for general admission and \$2.00 for I.S.U. students with paid activity slip. Tickets are available at the Hub on the I.S.U. campus, at the Iowa State Center Box Office, and at Fisher Theater on the night of performance. New policies this year include no reserve seats, no season tickets, and no telephone reservations. However, be sure to inquire about our new discount coupon booklets at 294-2436. Group rate information is available through Sue West at 294-4826. Curtain time for *Oklahoma!* is 8:00 p.m.

The
Iowa State University
MARCHING BAND
says: *Go Cyclones, Go!!*



The 210 piece Cyclone Marching Band was selected from over 300 applicants. The band represents musicians from 20 states and includes students from virtually every area of academic discipline.

This year in addition to performing at Cyclone football games, the band will perform November 7 at the Pittsburgh Steelers - Kansas City Chiefs game in Kansas City.

Drum Majors - Mike Botts, Marshalltown; Karla Killinger, Des Moines; Wayne Bailey, Newton. Student Directors - Chuck Allen, Adel; Mike Hipp, Batavia. Banner Corps Leader - Jan Kiser, Ames. Woodwind Section Leader - Chuck Martin, La Grange, Illinois. Announcer - Les Bartell, Nevada. Faculty Directors - Jimmie Howard Reynolds, Joseph Christensen.



The Cyclones



86 MARK BENDA
Animal Science
Coach - Jon Philby
Red Oak, Iowa



35 RICK BLABOLIL
Pre-Vet
Coach - Jack Kersting
Chesterfield, Mo.



91 LUTHER BLUE
Business Administration
Coach - Charlie Green
Valdosta, Ga.



51 RON BOCKHAUS
Forestry
Coach - Pat Mitchell
Cedar Falls, Ia.



56 MARK BOEHM
Industrial Administration
Coach - George Payne
Council Bluffs, Ia.



96 TOM BOSKEY
Accounting
Coach - Mike McDonough
Chicago, Ill.



25 TOM BUCK
Undeclared
Coach - Terry Ross
Cuyahoga Falls, Ohio



69 DAVE CHEESBROUGH
Sociology
Coach - Robert Motte
Bridgeville, Pa.



34 MIKE CLEMONS
Telecommunicative Arts
Coach - Keith Foley
Chicago, Ill.



23 FRANK COOPER
Child Development
Coach - Emmitt Gamble
Riviera Beach, Fla.



32 CAL CUMMINS
Undeclared
Coach - Bob Bierli
Freeport, Ill.



68 KEVIN CUNNINGHAM
Sociology
Coach - Bob Foster
Chicago, Ill.



21 JEFF CURRY
Undeclared
Coach - Gerry Faust
Cincinnati, Ohio



85 AL DIXON
Child Development
Coach - Cornelius Perry
East St. Louis, Ill.



73 TERRY EARNEST
Physical Education
Coach - Jack Fisk
Cedar Rapids, Iowa



50 DENNY ENGEL
Undeclared
Coach - Gerry Faust
Cincinnati, Ohio



24 DEXTER GREEN
Business Administration
Coach - Bob Pruitt
Woodbridge, Va.



UNION STORY TRUST AND SAVINGS BANK

Main & Burnett - North Grand Plaza - Gilbert
232-8200 232-8200 232-4843

**GO
CYCLONES!**

Points on the scoreboard is like
money in the Bank. . . .
Score with Union Story Bank!



**A hometown
friend.**



The Cyclones



67 DAVE GREENWOOD
Industrial Administration
Coach - Jerry Mauren
Cedar Rapids, Ia.



70 AL GRISSINGER
Industrial Education
Coach - Don Dyke
Felton, Pa.



42 GREG GROVE
Industrial Administration
Coach - Lee Crawford
Tipton, Ia.



76 DAN HANOVER
Psychology
Coach - Dave Didio
Syracuse, N.Y.



29 RAY HARDEE
Industrial Administration
Coach - Jimmy Morgan
Mulberry, Fla.



8 BUDDY HARDEAN
Physical Education
Coach - Norman Chadwick
Auburn, N.Y.



7 KEVIN HART
Distributive Studies
Coach - Alton Davis
Kansas City, Mo.



14 TONY HAWKINS
Industrial Management
Coach - Norman Chadwick
Onondaga, N.Y.



58 PAT HENRICKSEN
Education
Coach - Dick Olin
Clinton, Ia.



19 STAN HIXON
Physical Education
Coach - Paul Quinn
Lakeland, Fla.



17 JERRY JAKSICH
Sociology
Coach - Stan Macaitis
Omaha, Neb.



60 RANDY KOCH
Speech
Coach - Curt Olson
Charter Oak, Ia.



5 SCOTT KOLLMAN
Industrial Administration
Coach - Pat Mitchell
Cedar Falls, Ia.



31 BILL LARKIN
Sciences and Humanities
Coach - Ron Holmes
Camillus, N.Y.



84 MICKEY LEAFBLAD
Forestry
Coach - Mike Kunkle
Gurney, Ill.



UNION STORY TRUST AND SAVINGS BANK

Main & Burnett - North Grand Plaza - Gilbert
232-8200 232-8200 232-4843

GO CYCLONES! | Points on the scoreboard is like money in the Bank. . . .
Score with Union Story Bank!

MEMBER **FDIC** | **A hometown friend.** | 



37 RICH MARK
Physical Education
Collinsville, Ill.



The Cyclones



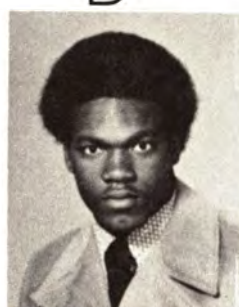
44 GREG MECKSTROTH
Industrial Administration
Coach - Will Rutenschroer
Cincinnati, Ohio



72 RALPH MECKSTROTH
Physical Education
Coach - Will Rutenschroer
Cincinnati, Ohio



39 TOM MILLER
Physical Education
Coach - Jon Davis
Dearborn, Mich.



93 LENZY PERINE
Physical Education
Coach - John Menotti
San Diego, Calif.



33 TOM PERTICONE
Undeclared
Coach - Bub Chontos



77 GERRY PETSCH
Industrial Administration
Coach - Robert Atkins
Detroit, Mich.



88 GUY PRESTON
Pre-Vet
Coach - Robert Johnson
Ferguson, Mo.



64 TOM RANDALL
Undeclared
Coach - Eldean Mathison
Mason City, Ia.



82 OTIS RODGERS
Physical Education
Coach - Tom Mahn
Tampa, Fla.



89 GLOVER ROGERS
Industrial Administration
Coach - Carl Garrigus
Opa-Locka, Fla.



79 TOM ROŁOSON
Architecture
Coach - Richard Hoover
Vestal, N.Y.



54 DAVE ROM
Farm Operations
Coach - Harlan Buisman
Aitken, Minn.



11 TERRY RUBLEY
Business Administration
Coach - Roger Harrington
Davenport, Ia.



57 MARK SETTLE
Industrial Administration
Coach - Cecil Rhoades
Nevada, Ia.



65 JOE SEYMOUR
Coach - Keith Bunting
Indianola, Iowa



28 JOHN SOLOMON
Industrial Administration
Coach - Nick DerCola
Clyde, N.Y.



18 WAYNE STANLEY
Education
Coach - Al Werneke
Belle Glade, Fla.



90 MAYNARD STENSRUD
Undeclared
Coach - Chuck Nichol
Lake Mills, Ia.



UNION STORY TRUST AND SAVINGS BANK

Main & Burnett - North Grand Plaza - Gilbert
232-8200 232-8200 232-4843

GO
CYCLONES!

Points on the scoreboard is like
money in the Bank. . . .
Score with Union Story Bank!



A hometown
friend.



The Cyclones



63 MIKE STENSUD
Farm Operation
Coach - Chuck Nichol
Lake Mills, Ia.



55 ROB STOFFEL
Industrial Administration
Coach - Bob Varley
Dubuque, Ia.



59 TOM STONEROOK
Business Administration
Coach - Grant Blaney
Chicago, Ill.



10 MIKE TRYON
Pre-Law
Coach - Phil Johnson
Ames, Ia.



27 MIKE TUCCI
Business Administration
Coach - Bill McAlee
Caledonia, N.Y.



3 JOHN VALASA
Industrial Administration
Coach - Alexander Zulewski
Roselle Park, N.J.



52 CRAIG VOLKENS
Industrial Administration
Coach - Verlyn Rysdam
Reinbeck, Ia.



92 RICK WHITE
Engineering
Coach - Jim Hoffmann
Burlington, Ia.



16 MARK WILLIAMS
Child Development
Coach - Jim Williams
Des Moines, Ia.



74 JEFF YURCHAK
Applied Art
Coach - Ralph Fife
Carnegie, Pa.



UNION STORY TRUST AND SAVINGS BANK

Main & Burnett - North Grand Plaza - Gilbert
232-8200 232-8200 232-4843

**GO
CYCLONES!**

Points on the scoreboard is like
money in the Bank. . . .
Score with Union Story Bank!

MEMBER



**A hometown
friend.**





FRESHMEN

The Cyclones



TODD BUTTERFIELD
Undeclared
Coach - George Thold
Stillwater, Minn.



38 DARRELL CHAPPER
Coach - Paul Quinn
Lakeland, Fla.



MARK CHICKERELLA
Undeclared
Coach - Ray Belliscari
Columbus, Ohio



45 SCOTT COLE
Forestry
Coach - Jerry Pezzetti
Ankeny, Ia.



66 DICK CUVELIER
Forestry
Coach - Bill Mulder
Jackson Junction, Ia.



TOM GAJEWSKI
Business
Coach - Edward Zembal
Oak Park, Ill.



99 CAL JACOBS
Psychology
Coach - Robert Harden
Council Bluffs, Ia.



9 AL JOHNSON
Agricultural Business
Coach - Dwaine Twait
Emmetsburg, Ia.



BRIAN JOHNSON
Pre-Medicine
Coach - Barry Brandt
Glidden, Ia.



13 PAT KENNEDY
Business
Coach - Bob Varley
Dubuque, Ia.



DARRYL KOCH
Agricultural Business
Coach - Ed Nelson
Hudson, Ia.



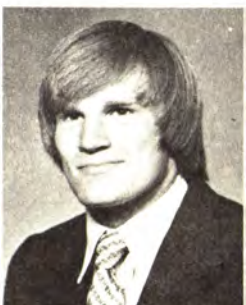
STEVE LEARY
Business
Coach - Gary Hreem
Waterloo, Ia.



GREG LEMPKE
Farm Operation
Coach - Roger Lounsberry
Livermore, Ia.



VICTOR MACK
Electrical Engineering
Coach - Thomas Landlittie
Mansfield, Ohio



81 JIM NISSEN
Engineering
Coach - Wally Sheets
Cedar Rapids, Ia.



DAN QUICK
Business
Coach - Dick Olin
Clinton, Ia.



GREG RENSINK
Agricultural Business
Coach - Marv Ryan
Newkirk, Ia.



UNION STORY TRUST AND SAVINGS BANK

Main & Burnett - North Grand Plaza - Gilbert
232-8200 232-8200 232-4843

**GO
CYCLONES!**

MEMBER
FDIC

Points on the scoreboard is like
money in the Bank. . . .
Score with Union Story Bank!

**A hometown
friend.**

**A FULL
SERVICE
BANK**

The Cyclones



FRESHMEN



53 **GENE ROWELL**
Physical Education
Coach - Bernard Olson
Stitzer, Wis.



TOM SCHIEBOUT
Electrical Engineering
Coach - Jim Johnson
Sioux Center, Ia.



26 **MIKE SCHWARTZ**
Mechanical Engineering
Coach - Jim Williams
Des Moines, Ia.



BOB SCOTT
Industrial Education
Coach - Steve Oleson
Lombard, Ill.



15 **RICK SINNOTT**
Physical Education
Coach - Dennis Fredricks
Albia, Ia.



TONY SOBERS
Radio, TV
Coach - Jim Palla
Brooklyn, N. Y.



YOGI STEPHENS
Business
Coach - Mike Mancini
Riverview, Fla.



75 **TIM STONEROOK**
Undeclared
Coach - Grant R. Blaney
Buffalo Grove, Ill.



JIM WOODWARD
Undeclared
Coach - Loyd Dunne
Collinsville, Ill.



UNION STORY TRUST AND SAVINGS BANK

Main & Burnett - North Grand Plaza - Gilbert
232-8200 232-8200 232-4843

**GO
CYCLONES!**

Points on the scoreboard is like
money in the Bank. . . .
Score with Union Story Bank!

MEMBER



**A hometown
friend.**



ISU TRAINERS



Back Row (l to r) Head Trainer Frank Randall, Rod Vanderheiden, Bill Watkins, Marty Richards, George Welu and Keith Lancaster.

Front: Lindsey Vanderheiden, Larry Thom, Bill Irland, Tim Hout and John VanFleet.

Gold's VERITABLE QUANDRY

The Restaurant
with the Buggy
in the Window

**OPEN
SUNDAYS**



We are now offering a
splendid variety of ordinary
and extraordinary lunches
and dinners.

from Carl Hagen's "No Time at All"

One block west of Munn Lumber
at 203 Main Street, Ames, Iowa.

IOWA STATE FOOTBALL ROSTER

No.	Name and Position	Hgt.	Wgt.	Age	Yr.	Hometown (High School)
2	CRAIG MANSKE, k	6-2	200	19	So.	Greendale, Wisc.
3	*JOHN VALASA, cb	6-2	190	21	Jr.	Roselle Park, N.J.
5	*SCOTT KOLLMAN, k	6-0	179	21	Jr.	Cedar Falls, Ia.
7	KEVIN HART, cb	5-11	186	20	Jr.	Kansas City, Mo.
8	*BUDDY HARDEMAN, qb	6-0	188	21	Jr.	Auburn, N.Y.
9	AL JOHNSON, fb	6-0	210	18	Fr.	Emmetsburg, Ia.
10	*MIKE TRYON, qb	6-1	188	21	Jr.	Ames, Ia.
11	TERRY RUBLEY, qb	6-2	170	20	So.	Davenport, Ia.
13	PAT KENNEDY, qb	6-1	190	18	Fr.	Dubuque, Ia.
14	*TONY HAWKINS, s	6-0	186	21	Sr.	Onondaga, N.Y.
16	*MARK WILLIAMS, r	6-3	186	22	Sr.	Des Moines, Ia.
17	*JERRY JAKSICH, cb	6-1	191	21	Sr.	Omaha, Neb.
18	*WAYNE STANLEY, qb	6-0	178	22	Sr.	Belle Glade, Fla.
19	STAN HIXON, se	6-0	168	19	So.	Lakeland, Fla.
21	JEFF CURRY, tb	5-8	185	19	So.	Cincinnati, Ohio
23	FRANK COOPER, fb	5-11	199	22	Jr.	Riviera Beach, Fla.
24	*DEXTER GREEN, tb	5-9	171	19	So.	Woodbridge, Va.
25	TOM BUCK, se	5-10	182	19	So.	Cuyahoga Falls, Ohio
26	MIKE SCHWARTZ, s	6-0	175	18	Fr.	Des Moines, Ia.
27	MIKE TUCCI, fb	5-11	210	19	So.	Caledonia, N.Y.
28	*JOHN SOLOMON, sb	5-8	179	21	Jr.	Clyde, N.Y.
29	*RAY HARDEE, sb	6-0	182	19	So.	Mulberry, Fla.
31	*BILL LARKIN, s	6-1	182	21	Jr.	Camillus, N.Y.
32	CAL CUMMINS, tb	5-11	195	20	Jr.	Freeport, Ill.
33	TOM PERTICONE, cb	5-11	186	19	So.	Clairton, Pa.
34	MIKE CLEMONS, cb	6-1	190	19	So.	Chicago, Ill.
35	*RICK BLABOLIL, p	6-0	183	20	Jr.	Chesterfield, Mo.
37	RICH MARK, cb	6-0	182	21	Jr.	Collinsville, Ill.
38	DARRELL CHAPPER, sb	5-9	175	18	Fr.	Lakeland, Fla.
39	TOM MILLER, r	5-10	186	21	Jr.	Dearborn, Mich.
42	*GREG GROVE, tb	5-11	201	22	Sr.	Tipton, Ia.
44	GREG MECKSTROTH, dt	6-3	202	19	So.	Cincinnati, Ohio
45	SCOTT COLE, lb	6-2	200	18	Fr.	Ankeny, Ia.
50	DENNY ENGEL, c	6-0	202	20	So.	Cincinnati, Ohio
51	RON BOCKHAUS, c	6-2	212	19	So.	Cedar Falls, Ia.
52	*CRAIG VOLKENS, de	6-2	210	22	Jr.	Reinbeck, Ia.
53	GENE ROWELL, dt	6-2	240	18	Fr.	Stitzer, Wis.
54	DAVE ROM, c	6-2	224	21	Jr.	Aitken, Minn.
55	*ROB STOFFEL, og	6-1	230	22	Sr.	Dubuque, Ia.
56	MARK BOEHM, og	6-1	227	20	So.	Council Bluffs, Ia.
57	*MARK SETTLE, lb	6-3	227	19	Jr.	Nevada, Ia.
58	PAT HENRICKSEN, og	6-4	215	19	So.	Clinton, Ia.
59	TOM STONEROOK, c	6-2	240	19	So.	Buffalo Grove, Ill.
60	*RANDY KOCH, mg	6-3	238	19	So.	Charter Oak, Ia.
63	*MIKE STENSURD, mg	6-4	270	20	So.	Lake Mills, Ia.
64	*TOM RANDALL, dt	6-6	245	20	Jr.	Mason City, Ia.
65	JOE SEYMOUR, ot	6-3	251	21	Jr.	Indianola, Ia.
66	DICK CUEVIER, dt	6-4	270	18	Fr.	Jackson Junction, Ia.
67	*DAVE GREENWOOD, og	6-4	240	22	Sr.	Cedar Rapids, Ia.
68	*KEVIN CUNNINGHAM, ot	6-5	228	20	Jr.	Chicago, Ill.
69	DAVE CHEESEBROUGH, dt	6-2	247	19	Jr.	Bridgeville, Pa.
70	AL GRISSINGER, ot	6-3	229	20	So.	Felton, Pa.
72	RALPH MECKSTROTH, ot	6-3	231	20	So.	Cincinnati, Ohio
73	TERRY EARNEST, og	6-5	232	21	Jr.	Cedar Rapids, Ia.
74	JEFF YURCHAK, dt	6-2	236	19	Jr.	Carnegie, Pa.
75	TIM STONEROOK, ot	6-5	225	18	Fr.	Buffalo Grove, Ill.
77	*GERRY PETSCH, c	6-3	225	21	Jr.	Detroit, Mich.
78	DAN HANOVER, mg	6-1	205	21	Jr.	Syracuse, N.Y.
79	TOM ROLOSON, og	6-3	242	19	So.	Vestal, N.Y.
81	JIM NISSEN, de	6-3	205	18	Fr.	Cedar Rapids, Ia.
82	*OTIS RODGERS, de	6-3	227	22	Sr.	Tampa, Fla.
84	MICKEY LEAFBLAD, te	6-4	215	18	So.	Gurnee, Ill.
85	*AL DIXON, te	6-5	216	22	Sr.	East St. Louis, Ill.
86	*MARK BENDA, lb	5-9	210	21	Sr.	Red Oak, Ia.
88	*GUY PRESTON, te	6-2	207	20	Jr.	Ferguson, Mo.
89	*GLOVER ROGERS, te	6-3	210	22	Sr.	Opa-Locka, Fla.
90	*MAYNARD STENSURD, lb	6-4	237	21	Sr.	Lake Mills, Ia.
91	*LUTHER BLUE, se	6-0	181	21	Sr.	Valdosta, Ga.
92	RICK WHITE, de	6-1	210	19	So.	Burlington, Ia.
93	*LENZY PERINE, de	6-2	209	22	Sr.	San Diego, Calif.
96	*TOM BUSKEY, id	6-2	210	19	So.	Chicago, Ill.
99	CAL JACOBS, lb	6-2	205	18	Fr.	Council Bluffs, Ia.

* indicates letters won

Ages as of Sept. 1, 1976

The New Chevrolet

A whole new car. A whole new ball game.



The 1977 Caprice Classic Sedan.

Now that's more like it.



OFFENSE

89	GLOVER ROGERS	TE
70	AL GRISSINGER	LT
67	DAVE GREENWOOD	LG
56	MARK BOEHM	C
55	ROB STOFFEL	RG
68	KEVIN CUNNINGHAM	RT
91	LUTHER BLUE	SE
18	WAYNE STANLEY	QB
24	DEXTER GREEN	TB
32	CAL CUMMINS	FB
29	RAY HARDEE	SB

IOWA STATE

DEFENSE

82	OTIS RODGERS	LE
63	MIKE STENSURD	LT
90	MAYNARD STENSURD	MG
64	TOM RANDALL	RT
93	LENZY PERINE	RE
96	TOM BOSKEY	LB
86	MARK BENDA	LB
16	MARK WILLIAMS	R
17	JERRY JAKSICH	CB
34	MIKE CLEMONS	CB
14	TONY HAWKINS	S

IOWA STATE SQUAD

2	Marshe, k	53	Rouell, dt
3	Valse, sb	54	Rom, c
5	Kellman, k	55	Stroff, og
7	Hart, cb	56	Boehm, og
8	Hardeman, qb	57	Sentle, lb
9	Johnson, fb	58	Henricksen, og
10	Tryon, qb	59	Tom Stonerook, s
11	Rubley, qb	60	Koch, mg
13	Kennedy, qb	63	Mike Stensrud, mg
14	Hawkins, s	64	Randall, dt
16	Mark Williams, r	65	Seymour, ot
17	Jaksich, cb	66	Cuvellier, dt
18	Stanley, qb	67	Greenwood, og
19	Hixon, se	68	Cunningham, ot
21	Curry, fb	69	Cheestrough, dt
23	Cooper, fb	70	Grisinger, ot
24	Green, lb	72	Ralph Neckstroth, ot
26	Buck, se	73	Ernest, og
27	Schwartz, s	74	Yurchak, dt
28	Tucci, fb	75	Tim Stonerook, ot
29	Solomon, sb	77	Patsch, c
31	Larkin, s	78	Hanover, mg
32	Cummins, fb	79	Rolosen, og
33	Pericone, cb	80	Ernest, ot
34	Clemens, cb	81	Nissen, dt
35	Blaboli, p	82	Rodgers, dt
36	Idler, fb	84	Leafblad, te
37	Mark, cb	85	Dixon, te
38	Chappper, sg	88	Preston, te
39	Miller, r	89	Rogers, te
40	Graham, s	90	Maynard Stensrud, lb
42	Grove, lb	91	Blue, se
44	Greg Meckstroth, dt	92	White, dt
45	Cole, lb	93	Perine, dt
50	Engel, c	94	Lardas, lb
51	Bockhaus, c	96	Boskey, lb
52	Velkans, da	97	Jacobs, lb

Coke adds life...to everything that makes your livinnice! Whether you're out with the gang having fun...or enjoying a quiet moment alone...no matter what makes for th good times...Coke adds life.



"Coca-Cola" and "Coke" are registered trade marks which identify the same product of The Coca-Cola Company.

OFFENSE

18	JOHN LIEBE	SE
67	TOM DeLAHUNT	LT
68	JAMES CROMLEIGH	LG
50	JOHN HAFFERTY	C
62	MIKE WAKEFIELD	RG
70	PHIL NOEL	RT
81	PAUL COFFMAN	TE
9	WENDELL HENRIKSON	QB
30	ROOSEVELT DUNCAN	FB
33	ROSCOE SCOBEY	TB
26	EDDY WHITLEY	SB

KANSAS ST.

DEFENSE

60	PERRY VIER	LE
89	CHESTER JEFFERY	LT
57	THEOPHILUS BRYANT	NG
79	MIKE OSBORN	RT
87	VIC CHANDLER	RE
55	CARL PENNINGTON	SSLB
59	GARY SPANI	WSLB
32	MARVIN SWITZER	KAT
2	JOHN ANDREWS	LC
21	CLYDE BRINSON	RC
3	GARY BOGUE	SS

KANSAS STATE SQUAD

1	Kris Thompson, k	54	Showalter, c
2	Andrews, dt	55	Pennington, lb
3	Bogus, s	56	Kuklenki, ng
6	Sinovic, k	57	Bryant, ng
9	Henricksen, qb	59	Spani, lb
10	Swanson, qb	61	Rogers, og
11	Howard, qb	62	Wakefield, og
12	Horchem, s	63	Mersch, ogc
13	Jones, dt	64	Dorsey, te
16	Wagner, s	65	Cherry, og
18	Liebo, se	67	DeLaHunt, ot
20	Tony Brown, lb	68	Cromleigh, og
21	Brinson, dt	69	Jeffery, dt
23	Lovely, lb	70	Noel, ot
24	Green, se	71	Hawaro, ot
26	Whitley, se	75	Kozak, dt
27	Cox, sb	76	Haag, ot
30	Duncan, fb	77	Bob Thompson, ot
31	Frazier, kat	78	Houchin, te
32	Switzer, kat	79	Osborn, dt
33	Scobey, tb	80	Viers, dt
35	Lorenzen, lb	81	Coffman, te
37	Owen, dt	82	Chambliss, te
39	Thomas, dt	83	Nelms, dt
40	Kelly, lb	84	King, se
42	Richardson, fb	85	McHugh, og
47	Rindler, lb	87	Chandler, dt
48	Christensen, dt	89	Greg Brown, ng
50	Hafferty, c	91	Craws, dt
53	Busey, c	93	Miller, te

Now from Magnavox.

Touch-Tune™

Color Television.

The most advanced electronics. At your fingertip.



STAR
SYSTEM.



Touch-tune to any channel (2 to 83, VHF or UHF) directly, without going through all the channels you do not want.
Touch-tune silently, effortlessly in 3/10 of a second... with the accuracy of a digital computer, with the ease of a pushbutton telephone.

Touch-tune at the set or from up to 40 feet away.

See the channel number flash on the screen, then magically disappear.
See a most remarkable color picture because you tune with computer precision.

Now the Magnavox Star System™ lets you enjoy television like you've never enjoyed it before. And all with the touch of one finger.

Model 4867.
Crafted of wood and
non-wood materials.
Simulated TV picture.

MAGNAVOX

QUALITY IN EVERY DETAIL

KANSAS STATE FOOTBALL ROSTER

No.	Name and Position	Hgt.	Wgt.	Age	Yr.	Hometown
1	KHIS THOMPSON, k	5-9	160	19	So.	Topeka, Ks.
2	**JOHN ANDREWS, deb	6-0	181	21	Sr.	Macon, Ga.
3	*GARY BOGUE, s	5-11	194	20	Sr.	Wichita, Ks.
6	*BILL SINOVIC, k	5-11	192	22	Sr.	Shawnee Mission, Ks.
9	WENDELL HENRIKSON, qb	5-11	165	20	So.	N. Hollyw'd, Cal.
10	BILL SWANSON, qb	6-1	180	21	Jr.	South Bend, Ind.
11	DUANE HOWARD, qb	6-3	195	18	Fr.	Derby, Ks.
12	BRAD HORCHEM, s	6-1	180	19	So.	Ness City, Ks.
16	NATE JONES, db	6-2	180	18	Fr.	Chicago, Ill.
17	BRAD WAGNER, s	6-1	172	20	Jr.	Seneca, Ks.
18	JOHN LIEBE, se	5-10	168	18	Fr.	Manhattan, Ks.
20	CLYDE BRINSON, db	6-1	194	19	So.	Vero Beach, Fla.
23	KEN LOVELY, tb	6-0	188	18	Fr.	Dallas, Tex.
24	CHARLEY GREEN, se	5-11	172	20	So.	Omaha, Neb.
26	ED WHITLEY, se	6-4	203	18	Fr.	Port Arthur, Tex.
27	*KERWIN COX, sb	5-9	174	20	Jr.	Oklahoma City, Ok.
30	ROOSEVELT DUNCAN, fb	5-9	192	18	Fr.	Fort Pierce, Fla.
31	**DENNIS FRAZEE, kat	6-3	196	21	Sr.	Summerfield, Ks.
32	**MARVIN SWITZER, kat	5-11	190	22	Sr.	Bogue, Ks.
33	**ROSCOE SCOBAY, tb	5-10	192	22	Sr.	Oklahoma City, Ok.
35	*RANDY LORENZEN, lb	6-2	216	20	Jr.	Cedar Falls, Ia.
37	SAM OWEN, db	6-1	184	18	Fr.	Liberty, Mo.
39	HOMER THOMAS, db	6-2	178	18	Fr.	Pompano Beach, Fla.
40	DAVID KELLY, lb	6-2	215	19	So.	Los Angeles, Cal.
42	BUBBA RICHARDSON, fb	6-2	205	21	Jr.	Alamogordo, N.M.
47	RUSSELL RIEDERER, lb	6-2	210	19	So.	Holton, Ks.
48	DENNIS CHRISTENSON, lb	6-0	217	19	So.	Madison, Wis.
50	JOHN HAFFERTY, c	6-2	245	19	So.	Pittston, Pa.
53	MALCOLM BUSSEY, c	6-1	219	20	Jr.	Dallas, Tex.
54	TOM SHOWALTER, c	6-3	215	19	So.	Geneva, Ill.
55	***CARL PENNINGTON, lb	6-0	225	20	Sr.	Forsyth, Ga.
56	DAVE KUKLENSKI, ng	6-0	230	19	So.	Kansas City, Ks.
57	***THEOPILIS BRYANT, ng	5-11	245	22	Sr.	Tifton, Ga.
59	**GARY SPANI, lb	6-2	216	20	Jr.	Manhattan, Ks.
61	*JIM ROGERS, og	6-4	230	20	Jr.	Griswold, Ia.
62	*MIKE WAKEFIELD, og	6-3	237	19	So.	Liberal, Ks.
63	*RON MERSCH, og-c	6-4	207	21	Sr.	Des Moines, Ia.
64	**FLOYD DORSEY, te	6-4	218	20	Jr.	Leawood, Ks.
65	*JOHN CHERRY, og	6-3	234	19	So.	Oklahoma City, Ok.
67	*TOM DeLaHUNT, ot	6-3	245	21	Sr.	Cypress, Cal.
68	JAMES CROMLEIGH, og	6-5	263	23	Jr.	Berlin, Conn.
69	CHESTER JEFFERY, dt	6-4	252	19	So.	Kenosha, Wis.
70	PHIL NOEL, ot	6-6	250	20	Jr.	Ventura, Cal.
71	ERNIE NAVARRO, ot	6-2	238	21	So.	Los Angeles, Cal.
75	*MARK KOZAK, dt	6-3	227	21	Sr.	Parma, O.
76	*CGRUS HAAG, ot	6-4	255	21	Sr.	Danielsville, Ga.
77	BOB THOMPSON, ot	6-7	310	19	Fr.	Columbus, O.
78	ROB HOUCHIN, dt	6-3	230	18	So.	Wichita, Ks.
79	*MIKE OSBORN, dt	6-5	235	20	Jr.	Leawood, Ks.
80	**PERRY VIER, de	6-2	207	21	Sr.	Windom, Ks.
81	*PAUL COFFMAN, te	6-3	210	20	Jr.	Chase, Ks.
82	**DAVE CHAMBLISS, te	6-2	221	23	Sr.	Lawrence, Ks.
83	KEITH NELMS, de	6-0	205	21	Jr.	Houston, Tex.
84	*MANZY KING, se	6-0	180	20	Jr.	Montgomery, Ala.
85	JEFF McHUGH, og	6-3	258	19	So.	Milwaukee, Wis.
87	**VIC CHANDLER, de	6-2	212	21	Sr.	McPherson, Ks.
89	GREG BROWN, ng	6-5	235	18	Fr.	Washington, D.C.
91	TYRONE CREWS, de	6-3	211	21	So.	Levittown, Pa.
93	JIM MILLER, te	6-4	217	18	Fr.	Shawnee Mission, Ks.

College

SCOREBOARD

following

I.S.U. FOOTBALL

Saturdays at 4 p.m.

Sponsored by



ISU Credit Union
HiWay Credit Union
Ames City Credit Union

on

KASI

1430



AMERICA'S STEAK EXPERT

- ★ *UNIFORMLY PERFECT U.S.D.A. CHOICE STEAKS*
- ★ *DINING ROOM*
- ★ *FREE PARKING*

HIGHWAY 30 WEST

OPEN 11 a.m.-9 p.m.

PHONE: 292-4033

Four Seasons

LAWN & SPORTS CENTER

4020 W. Lincolnway • Ames

Phone: 292-3032



Cyclone Fans

SAVE \$300!

Coupon good for \$300 off regular price of any new 1976 John Deere Snowmobile (except Model 300).

Offer expires November 30, 1976

**AFTER THE GAME
STOP BY!
WE'RE RIGHT ON YOUR
WAY HOME!**



THE FAMILY RESTAURANT

1606 South Duff
Junction New Hwy. 30 & 69

CYCLONE FANS.....

Now **THREE** different locations,
But **ONE** Great Charcoal Taste!

Hardee's® Charbroil Burgers



218 WELCH

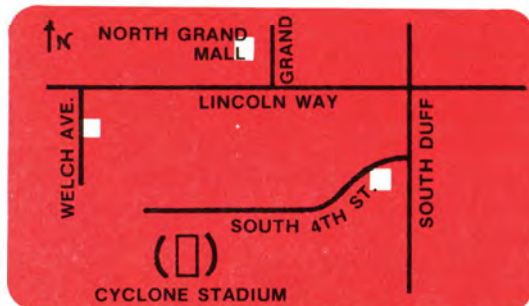


NORTH GRAND MALL

AND OUR **NEWEST** LOCATION.....

309 SOUTH DUFF

MAP OF OUR 3 AMES LOCATIONS



Hardee's®
Charbroil Burgers

MORE THAN
JUST ANOTHER
HAMBURGER
PLACE

KANSAS STATE UNIVERSITY

Kansas State University is more than 100 years old. That's a lot time to develop fine programs, build modern facilities, strengthen a faculty, and gain an enviable reputation as an outstanding institution in higher education.

Moreover, during that time period the University has grown to more than 50 departments in these broad areas of learning: agriculture, architecture and design, arts and sciences (with 23 departments and one division), business administration, engineering, home economics and veterinary medicine.

The wide variety of academic offerings in a great number of fields enables students to get the best possible liberal and professional education.

Yet K-State is a small school, offering personalized and individual attention that few schools in its size range can match. Each new student is regarded as a individual in search of learning and self-development — not as an existing unit in the freshman or sophomore, junior or senior class.

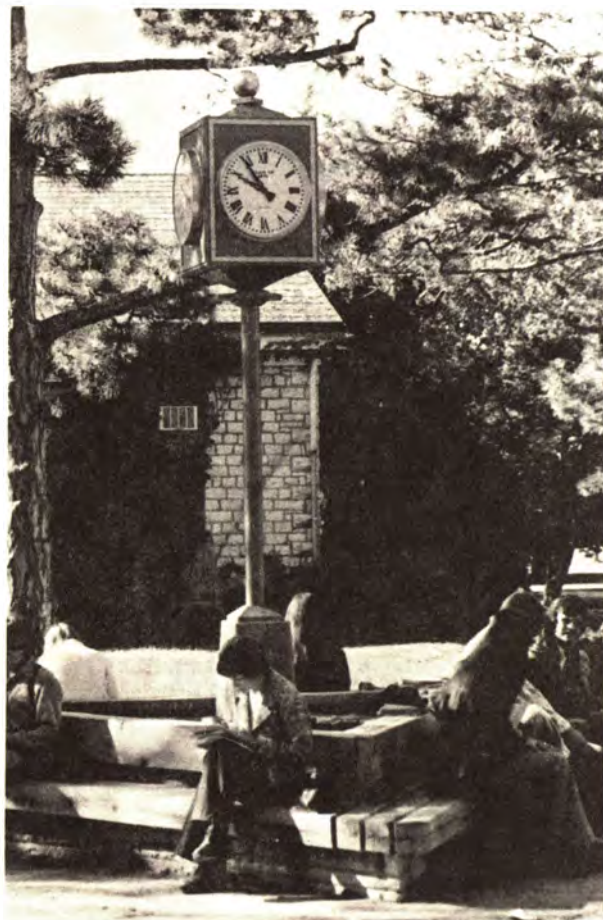
The proof of KSU's quality of education is evident. The caliber of its students is superior. A recent study by the American College Testing Bureau revealed of some 500,000 freshman entering 400 colleges and universities, K-State students ranked in the top 25 percent on the scores made on the ACT tests. For each year of the decade, Kansas State enrolled more valedictorians and salutatorians from state high schools than any other higher institution in Kansas.

Even though the full-time enrollment exceeds 17,500 students, every new student is part of a smaller group. Classes average 26 students. This atmosphere of informality and friendliness is coupled with a seriousness of purpose that has been a hallmark of KSU students for more than 100 years. There are more than 1,600 on the teaching and research staffs. Of the full-time faculty, 64 percent hold doctoral degrees.

And Kansas State continues to grow and expand. The first phase of the new veterinary medicine complex is completed and the second is nearly completed. With the completion of a building addition in the fall of 1970 Farrell Library provides facilities which are the equal of

any in the area. Durland Hall, the new chemical and industrial engineering building, is completed.

The beautiful Kansas State campus is located in the northern part of Manhattan and consists of 315 acres. Most of the campus buildings are constructed from native limestone and are richly landscaped. Beyond the campus are more than 4,000 acres of University land used for experimental work in agriculture.



The city of Manhattan (population 40,000) is situated in the rolling flint hills of northeast Kansas, 125 miles west of Kansas City via Interstate Highway 70. Located five miles north of the city of Tuttle Creek Lake, one of the largest in the Midwest.

Kansas State Football Coaching Staff



Kansas State Coaching Staff -- (Standing) Dave Dunkleberger, Ivy Williams, Sandy Buda, Bob Weber, Jim Bates, and George Walstad. (Kneeling) J. W. Emerson, Head Coach Ellis Rainsberger, and Dick Selcer.

The Wildcats



2 JOHN ANDREWS



3 GARY BOGUE



21 CLYDE BRINSON



57 THEOPILIS BRYANT



82 DAVE CHAMBLISS



87 VIC CHANDLER



65 JOHN CHERRY



81 PAUL COFFMAN



41 JAMES COUCH



27 KERWIN COX



73 JIM DAVIDSON



67 TOM DeLaHUNT



85 FLOYD DORSEY



31 DENNIS FRAZEE



76 CHRIS HAAG



50 JOHN HAFFERTY



12 BRAD HORCHEM



78 BOB HOUCHIN



84 MANZY KING



75 MARK KOZAK



The Wildcats



56 DAVE KUKLENSKI



35 RANDY LORENZEN



7 TOM MERRIFIELD



63 RON MERSCH



71 ERNIE NAVARRO



70 PHIL NOEL



79 MIKE OSBORN



55 CARL PENNINGTON



61 JIM ROGERS



28 STAN ROSS



33 ROSCOE SCOBEY



43 GREG SEARCY



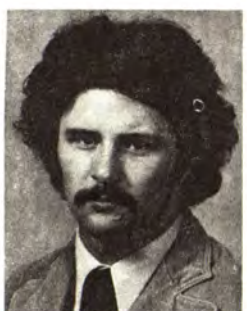
66 ROY SHINE



6 BILL SINOVIC



59 GARY SPANI



10 BILL SWANSON



32 MARVIN SWITZER



17 BRAD WAGNER



62 MIKE WAKEFIELD



80 PERRY VIERS

We give your
mouth more reasons
to cheer.



These candies are on sale in the stadium now.

IOWA STATE UNIVERSITY

ISU 100 Cyclone Century Club

The Iowa State University Department of Intercollegiate Athletics salutes the members of the CYCLONE CENTURY CLUB... a growing group of significant contributors to Iowa State athletics. These individuals and firms have contributed \$100 annually to help us reach our goal of athletic excellence for Iowa State University. CARDINAL AND GOLD and STATE'S 250 CLUB members are recognized in another section of the program.

ADAIR

Adair Feed and Grain Co.

Charles Crawford

ADEL

Robert D. McKee

Lee H. Straight

ALDEN

Dr. R.J. Buzzetti

Warren R. Porter

ALGONA

Algona Reminder, Inc.

Dick Kuecker

Alfred Schenck

Security State Bank

W. J. Nugent

Dr. D. J. Shey

Lowell W. Smith

ALTA

Robert Hinkeldey

AMES

James A. Abbott

Air Conditioning, Inc.

Lloyd C. Allen

Allen Construction Co.

Robert D. Allen

G. Roger Alley

Howard E. Ames

John H. Ames

Ames Building and Loan Assn.

C. A. Hanlin

Ames Lodge BPOE 1626

Ames Nursery

Lloyd Cafferty

Ames Processed Foods, Inc.

Ames Travelodge

Robert Piper

Ames Tune-Up Service

Clarence Small

Clifford Anderson

James Anderson

Marvin Anderson

Richard D. Axtell

Dr. John Bacon

Dale and Nancy Bahr

Barbara Jean's School of Dance

Barbara Jean VanScoy

Jerry L. Barber

Harlos L. Barnum

James Barr

John W. Baty

Charles L. Benson

Benson Motors

Carl and Curt Benson

Dr. Michael F. Berard

Robert T. Binkley

Dr. Charles Birdsall

Duane A. Black

Donald T. Bledsoe

Bleeker's Inc.

Bliss Construction Co.

Richard K. Bliss

King Block's Korral

Bourns, Inc.

Richard L. Bowman

Dr. David R. Boylan

John R. Braden, Jr.

James Brewer

The Broiler

John Pfeffer

Delmar M. Brue

Jack Bruin

N. W. Brunia

Robert Buck

Dr. William M. Buck

C. H. Budolfson

Craig C. Bumgarner

Fred Bunce

Verle Burgason

LeRoy E. Butler

C & K Healing & Air Conditioning

C and M Excavating

Mike Goff and Chuck Wheeler

Campustown Skelly

Carpenter Paper Co. of Iowa

Dean Spurgeon

Carr Hardware

Art Ketelson — Jim Daffin

Stephan B. Carr

Carriage House

Bud Nichol and Marv Walter

Dr. George C. Christensen

City Electric Supply, Inc.

R. E. Sullivan

H. L. Bogengrief

Gerhard P. Clausius

Ev Cochran

Compass Insurance Agency, Ltd.

Arnie Gaarde

Ray Cook Const. Co., Inc.

Cooper's Mill, Inc.

Pete Cooper

Credit Bureau of Story County

Richard Wiebe

Bud Corieri

Arthur E. Cott

Harold A. Cowles, Jr.

Robert L. Crom

Cross Floo Service

Verl Crouse

Kenneth Culp

Steven D. Curran

John Curry

Cyclone Country Ambassadors

Robert Mickle

Donna R. Danielson

Harold W. Davey

D. C. Construction Co.

Paul DeJong

Dr. Ervin Denisen

Diesel Service Company

Tom Divine

Bruce Doane

Mrs. Evelyn Donels

Doboy Feeds — Domain Ind., Inc.

Dougherty & Co.

W. E. Dreeszen

Lloyd J. Dresser

Jack G. Dunlap

Norman P. Dunlap

Zac Dunlap

George R. Duvall

Dyna-Kleen Service

Ken C. Davis

Roscoe W. Eggers

Chuck Elder

Ray S. Epperly

LeRoy E. Everson

Arthur H. Eschbach

James L. Ethington

L.C. Faust

Dr. Earl Feldman

Robert A. Folkmann

John H. Ford, Jr.

C. F. Foreman

Charles F. Frederiksen

R. Friedrich and Sons

Robert and Reinhard Friedrich

Froning and Deppe

Robert Deppe

Dr. M. Fujinaka

Wayne A. Fuller

Hon Pong Fung

Gallery Restaurant

Howard Thiel

Robert B. Gauley

General Filter Company

John Scholten

Ross Genovese

C. M. Germaine

Gibbs Plng. and Hing.

Karl Gilbertson

Dr. Donald L. Good

Mortimer Goodwin

Goodwin, Zimmerman and Co.

Grand Ave. Service

L. W. Scheuermann

Dr. John A. Grant

Frederick C. Grau

Dr. John H. Greve

Charles G. Gray

A. H. Hagge

Carl Hamilton

Kenneth Hampson

Dr. Tom Hannum

Wayne V. Harrell

Dave Harli

Vincent E. Hassebrock

Dr. G. J. Hegstrom

Ed Hendrickson

William Herman

Dr. John Herrick

Jeffrey Heltzer

Dr. Howard H. Hildebrand

Robert L. Hildebrand

G. J. Hildreth

Lawrence R. Hillyard

Dr. James H. Hillon

Thomas Hinders

Darrell F. Hiserote

Dr. Mark Hoffman

Holiday Inn

Lyle Wilson

Gaylord Hovde

Dr. Trevor Howe

John Huber Clothing

Dave Huinker

Dale O. Hull

Keith M. Hussey

Dr. Norman E. Hutton

Hy-Vee Food Stores

Lowell Darnell

Iowa State Memorial Union

Bruce Hudson

ISU Vet. Med. Alumni Assoc.

C. A. Iverson

Dr. William Iverson

Edward C. Jacobsen

Fred W. Jahr

F. Blaine Jenkins

Jones Luggage & Leather

Marion Jones

Paul R. Jones Sheet Metal

Paul and Jerry Jones

KASI Radio

Dale Cowle

Forest Kenny

Kentucky Fried Chicken

James D. Miller

Paul Klingseis

Dean R. Knutson

Dr. Paul Koellner

Russell F. Koester

Daniel L. Krieger

Dr. Virgil Lagomarcino

William S. LaGrange

Landberg-Kiuffa Pharmacy

R. K. Larson

Robert Lawrence

Dr. Arlo Ledet

Clayton Lokken

Norman L. Loots

Lee G. Loseke

Glen Lowman

Louis G. McCullough

Bill McGowan

Jack M. McGuire

Larry L. McHone

John L. McKinney

Dr. James R. McKiveen

Mack D. Maffett

John Mahistede

Doug Malcolm

Arthur R. Mann

Dr. Arnett Matchett

Mathison Motor Company

Art & Dick Mathison

Louis Menze

Mert's

Vernon M. Meyer

B. O. Mickelson

Frank E. Miller

Dr. Lyle D. Miller

Milliken Body Shop

Minsky's Pizza Joint

Montgomery Ward & Co.

Ian D. Moore

Wayne R. Moore

Gary Mulhall

Robert C. Mulhall

Alfred H. Munn

Dr. Alan K. Munson

Kermit B. Myers

Donald E. Nelson

John R. Nervig

Harold Newell

Bud Nichol

Harold Nichol

Frederick Niemann

Jack Nurdyke

Northwestern Bell Telephone Co.

Earl W. Ogawa

Olson Manufacturing Co.

Dean Hutson

Memory of Ralph H. Olson

Alan Oppedal

Edward L. Ornberg

Wayne D. Ostendorf

Donald B. Ostermann

Dr. R. Allen Packer

Burl A. Parks

Dr. W. Robert Parks

John Parris

Harold D. Paul

Dr. Phillip T. Pearson

Dr. Leo C. Peters

Dr. Elroy Peterson

Fred and Neva Peterson

J. C. Penney Co., Inc.

Ken Hansen

J. C.

IOWA STATE UNIVERSITY

Cyclone Century Club

Boone Touchdown Club

Boyd's Dairy Stores
James E. Boyd
Boone & Ames
Brooks Equipment Co.
Clara Brown
Victor Brunner
Caffrey Cigar Co.
Joe Caffrey
Citizens National Bank
George E. Taylor
Clark Real Estate, Inc.
J. G. Clark
Dr. G. W. Cornwell
Gary W. Creasman
Duffy's Appl. and T.V.
Jean and Stephan Duffy
Eckstein Diamonds
George Eckstein
Fisher Shoe Company
Robert L. Fisher
Gillespie Motors
Duane Haglund
Roland Hamman
Hawkeye Savings & Loan
Boone & Ames
Judge Paul E. Helliwege
Imperial Inn
Dr. Dennis D. Kollbaum
Wayne Kooa
Wayne R. Lindell
Lawrence J. Loehrer
Merit Baking Co.
N. L. VanDenBeard
Moffitt Ford
T. N. Nelson
George W. Peterson
Redeker Furniture Company
Robert Reedholm
Dr. Wayne E. Rouse
Dr. H. P. Sandberg
Schultz Labs, Inc.
Richard B. Schultz
Dr. Gerald H. Sutton
Virginia's House of Flowers
Wendell Lowe
William W. Wright

BOUTON

Clyde C. Dills

BOYDEN

Lee Moret

BRAYTON

Fred M. Vorrath

BREDA

Dale Bruning

BRIDGEWATER

Lee Nichols

BRITT

First State Bank
George Merriam

BROOKLYN

Manatt-Carter Paving Co.
K. E. Carter

BURLINGTON

William A. Kuehn
Robert H. Tiemeyer

CAMBRIDGE

Dale A. McHone

CARLISLE

Charles R. Eichacker

CARROLL

C. D. Andrews
Bieri Const. Co.
Carroll County State Bank
Carroll Veterinary Clinic
Marv Collison
Comito Realty Co.
Bill Comito
Commercial Savings Bank
Ralph M. Crane
Crouse Cartage Company
Paul Crouse
Dearduff's Inc.
William Farner
Leo Fitzpatrick
Fleskes Construction
Archie J. Gietz
Dr. N. J. Gradoville
James L. Grettenberg
H & H Company
William Hamman
Juergens Produce and Feed Co.
Jungs Bakery
Lane Audio Visual Center
Carroll Lane

Ronald W. Muhlbauer

J. Harold Rice
Schroeder Assoc.
L. A. Smith Co.
Crowley Spindler
B. G. Trant--
Wunschel Law Firm, Inc.
Russell Wunschel

CEDAR FALLS

Robert Beck
Brookside Vet Center

CEDAR RAPIDS

Van C. Coleman
Dr. Dean C. Frey
David H. Hammond
Roger Hansen
Donald P. Hattery
Dr. Glen C. Hornbuckle
Iowa Midland Supply Co.
Jeff Johnson
Martin E. Kacena
King's—Builders Material
Ed Doty
Larson & Unzeitig, Inc.
Clark K. Parks
William J. Probert
Dr. W. J. Robb
Lewis H. Springman
Steltzer Lincoln-Mercury
Paul Steltzer
Jerry Ward
Wayne H. Whitmer
Henry P. Wilder

CHARITON

William J. Carter
First State Bank
Roy E. Frizzell
P. G. Hibbs

CHARLES CITY

Robert H. Cooper
Dan N. Crudden
Sar Hybrids, Inc.

CHEROKEE

Willard H. Fee
France Grain & Feed Co.
F. R. Graves
Thomas B. Grundman
Dr. A. W. Krause
Rogge & Tveitnes

CHURDAN

D. N. Berry

CLARENCE

Merlin D. Hulise

CLARION

Robert L. Davison
Duane W. Sandage
Melvin Waldon

CLEARFIELD

Dr. John Thompson

CLEAR LAKE

Dr. John D. Borthelsen
Robert Treloar

CLARINDA

Robert Brown
John R. Hunter, Jr.
Dr. Edward C. Winter

CLEMONS

Ralph Howe

CLINTON

Edward Howes
Tommy G. Stamp
Roscoe C. Wagner

COLFAX

Don Faidley

COLLINS

Donald Struthers

COLO

John Niland
Art Riese

COLUMBUS JUNCTION

Robert & Robin Greene

CONESVILLE

Robert L. Brown

CONRAD

John Dowden
Green Products Co.

COON RAPIDS

Jake Bell
Maurice Campbell
Dr. R. E. Shirbourn
Wesley L. Thomas

CORNING

Paul's Feed & Supply
Claude H. Paul
Dr. Lowell H. Roberts
Dr. James E. Shaw

CORWITH

Thurman Gaskill
James A. Mullins

CORYDON

Citizens State Bank
Bo Grisamore

COUNCIL BLUFFS

Russell C. Brandt
Council Bluffs Savings Bank
Ed H. Spelman, Jr.
State Bank & Trust

CRESCO

Garyl Miller
Richard M. Reinhart

CURLEW

Richard Johnson
Richard P. Kibble

CRESTON

James C. Almquist
Leo A. Avazian
Stephen B. Kenkel

DALLAS CENTER

Brenton Bros. Inc.

DAVENPORT

Patrick J. Hammes
Roy Keppy
David Kling
Dr. Merle Lang

DAYTON

Jens Rugaard

DECORAH

Erdman Engr. Service
Roger A. Johnson
Thomas A. Johnson
Hubert C. Jones

DEDHAM

Stangl Ins. Agcy.

DELMAR

Robert G. Schmidt

DENISON

Bilsten Bros. Const. Co.
Don & Max Bilsten
Denison Drug
Farmbest, Inc.
Farmland Food, Inc.
KDSN Radio

DES MOINES

Accoustical Specialties, Inc.
Myron R. Olson
Richard A. Adams
Robert D. Akre
Ankeny — Des Moines Plumbing
Robert B. Ash
Dr. M. E. Alberts
Backman Sheet Metal
Edward A. Bajet
Joe Barksdale
Richard H. Beatty
William H. Beswick
Boidt Industries, Inc.
Joseph E. Borg
Thomas R. Borg
C. Robert Brenton
Ronald D. Brown
Building Maintenance Service
Richard G. Bullard
Henry H. Byers
Can-Tex Industries
Dean Carlson
Carlson Oil Co.
Charlie Mitchell
Garland K. Carver
Hugh H. Clarke
LeRoy D. Claycomb
David H. Comann
W. O. Conyers
Crescent Chevrolet
J. R. Piggott
Howard W. Crist

Cunningham-Reis Co.

Earl Anderson
Robert W. Dahlberg
Dain, Kalman & Quall, Inc.
Dalbey-Lister Concrete
Walter W. Davis
Deremiah Plmg. and Hing.
Des Moines Savings and Loan
Peter P. Dickinson
Dickson Industries Inc.
Robert Dillon
Ed Donahue
Douglas Machinery
Herb Drey
Brian C. Dunker
Eagle Iron Works
Thomas B. Eveland
Fair Play Mfg. Co.
James E. Fay
James M. Finley
J. Y. Foster
F-S Services, Inc.
Don Marcot, Charles Steen
Claude Freeman
Robert F. Galligan
Dr. John Garfield
Don H. Geiger
G. G. Geraghty, Jr.
Donald H. Gerdorn
Arnold Golleb
GMH Fluid Power & Mach. Inc.
W. A. Goodwin
John G. Graham
Grand Ave. Vet Hospital
John W. Patterson
Phillip Grask
Allyn E. Hagen
Kenneth C. Halligan
Robert Hanrahan
Russell J. Hansen
Robert Helmick
E. George Henningsen
Grover Hertzberg
Iowa Industrial Products
Dick Weisenbach
Iowa Road Builders
Iowa Truck Center, Inc.
C. R. Irvine
John D. Iverson
Albert L. Jennings
Jester & Sons
Robert Jester
Carroll F. Johnson
Carroll L. Johnson
Roger A. Johnson
Thomas A. Johnson
Hubert C. Jones
Donald Jordahl
Kaser Construction Co.
Gerald L. Katzmann
Keith Electric Co.
William R. King
Gerald Kirke
Merle Knuth
Dr. Robert L. Kollmorgen
Vera Kolls
Robert W. Kuhlman
Dr. Larry L. Lang
Harold W. Larson
Gary V. Lewellyn
Lincoln Grain, Inc.
Marshall G. Linn, Jr.
Marshall G. Linn, III
Byron W. Lodwick
Bruce Longstreet
John E. Luhring
George Luke
James Lynch & Assoc. Inc.
Dr. David L. McCoy
Jams R. McDermott
C. H. McGuinness Co., Inc.
McHenry Dist. Co.
Bruce W. McKee
John J. McLaughlin
James T. Machia
J. Robert MacNaughton
George F. Malcolm
Richard Marshall
Massey Ferguson, Inc.
Charles J. Maxwell
J. B. Mefford Co.
Allen E. Meyer
Midland Builders Co.
William C. Knapp
Larry L. Miller
Edward Morelock
Dr. Wm. Morrissey
James R. Mumford
David L. Nagel
National Travelers Life
Paul H. Seltz
Roy W. Nelson
Gordon Neumann
Harold C. Neumann, Jr.
John E. Neumann

Walter N. Neumann, Jr.

Walter N. Neumann, III
Dr. Owen J. Newlin
North American Delivery Co.
Joe T. Chiodo
William Orth
William H. Owen
Bob Palmer
Reaves E. Peters
Plaza State Bank
Forest Lewis
Plumb Supply Co.
R. S. Prewitt Company
Robert S. Prewitt
George M. Putnam
Gerald Rickert
John Ringland
Dr. Van C. Robinson
Leo M. Roepke
James L. Rogers
Robert Root
Ronald L. Roth
Gene Roush
Richard E. Sargent
Robert E. Savage
Tom Sawyer
A. A. Schneiderhahn Co.
Paul Mollman
Lyle J. Schrum
Servicemaster, Inc.
Austin Rice
Don P. Shafer
Shaw, McDermott & Co.
Robert Kirke
John D. Shors
S & J Marine, Inc.
Fred Spuzello
SRB Corporation
Sid Bradley
Charles H. Stoll
Charles L. Strom
H. I. Talbott
Franklin Tappen
Lester L. Thompson
Todds, Inc.
Alan Niedermeier
Donald E. Topf
James Trager
Transcon Lines
Translates Ins. Agcy.
George E. Turner, Jr.
Valley Bank & Trust Co.
Venetian Orn. Iron Works, Inc.
Mario Zenti
Vickers—Des Moines Oil Co.
Waldinger Corporation
James H. Waters
Evert Weeks
G. LaMonte Weissenburger
George L. Wendelin
Allen Whitfield
Wilson H. Witt
Charles Wittmack
George I. Wood, Jr.

DEWITT

Porky Burmeister

DEXTER

Paul F. Clausen

DOWS

McAdams Livestock
Bus McAdams

DUBUQUE

Joseph V. Cullen
Dubuque Packing Co.
Ivan Dull
Interstate Power Co.
Dr. Merrill M. Vanderloo

DYERSVILLE

Dyersville National Bank
Dale R. Luckow

DYSART

Charles Leo

EAGLE GROVE

Wendell W. Bailey
Boone Valley Co-op
Keith Voigt
Dr. John A. Gazaway
Golden Eagle Pork Show
Dean Moser
Larry Hill
Drs. Varland & Johnson
M. & M Products Co.
James D. Myers
Charles Oldsen
David A. Rouse
Security Savings Bank
John Govern, Jr.
Umthun Trucking
Robert VanHouten
Clarence Williamson

IOWA STATE UNIVERSITY

Cyclone Century Club

EARLHAM

Donald Maas

ELDORA

William C. Dagit
Cecil F. Rooks
Dennis Wood

ELDRIDGE

David E. Stephens

ELLSWORTH

Dwayne Hill
Wallace Iverson
Vernon E. Peterson
Emery Tegland
Thompson Hatchery
Dale Cook

EMMETSBURG

Bill Brennan
Emmetsburg Grain Co.
James M. Thompson.
Dr. William Frevort
John Kerber
Jerome Klepper
Ted's Super Valu

ESSEX

Keith Carlson
J. C. Mecom

FAIRFIELD

Fairfield Eng. & Mfg. Co.
Cloyce D. Palmer

FOREST CITY

Robert V. Fowser
Donald E. Snyder
Glen Wilson, Jr.

FORT DODGE

Dr. Hoyt H. Allen
All Wheel Drive Co.
Arnold Motor Supply
Larry Wegner
Assoc. Engrs., Inc.
Bob Payer
Dan W. Barrett
Bob's Tire Service
Brokaw Supply Company
W. E. Brokaw, Jr.
Robert Clawson
Dairy Queen
Tom Pinkert
Fred M. Dalvey
Ed DeBakey
Bernard J. Ermels
John Evans
Rachel Evans
Farm Bureau Ins. Services
Vern Renken
First National Bank
Earl J. Underbrink
Pete Garatoni
William S. Gibb
Leon Griffin
John E. Hayes
Neil Hinds
Floyd D. Huling
Joseph Jackson
Roland B. Jacobs
Everett Johnson
Richard L. Jorgensen
Josephson Radiator Shop
Kautzky's Sporting Goods
Kersten, Ophelm, Carlson & Estes
Jerry Killper
Levin Chevrolet Co.
Dr. & Mrs. J. G. McCarroll
W. C. McCarten
J. Gerald McTigue
Harlan Pfaff
Robert Pingel
Quality Plus Products
Tom Schmoker
Dr. James D. Rhodes
Ridgewood Lanes
Willis Warner & Don Larson
John E. Rowles
Lloyd C. Schubert
The State Bank
Richard Smith, Pres.
Swaney Equipment Co.
George H. Lawler
Shirley Thornton
Dr. Richard C. Tripp
Union Trust & Savings Bank
Pete Garatoni, Pres.
Russell Whitney
Dr. Ralph Yoder

GARNER

Edward D. Buntenschach
Donald Greiman
Dr. Henry G. Voetberg

GARWIN

Jim Griffin

GLADBROOK

John Putney

GLIDDEN

Doug Doyle
Glidden Farm Equip.
Curtis E. Hofstad
A. Moorehouse Company
Fred Rudi

GOWRIE

Jack D. Burnett
Doug Miller

GRAND JUNCTION

Robert Clause
Roger Clause
Melvin W. Karber
Lynn D. McConnell

GRINNELL

James W. Buck
Dr. Merle Doty
L. G. Keeney
Donald L. Pederson
Mike Peterson

GREENFIELD

Feeders Service, Inc.
Dean Holland
McCunn Implement Co.

GRIMES

John Olson

GRISWOLD

Charles and Cindy Miller

GRUNDY CENTER

Ralph A. Anderson
Keith E. Carter
Royce J. Fichtner
Frederick Furniture, Inc.
Keith Myers
Spokesman Press

GUTHRIE CENTER

Dr. John P. Glenn

HAMPTON

Jopseh Barr
A. C. Benton, Inc.
Brown & Brown
Mr. Ed's
Sorenson Olds-Cadillac

HARLAN

Charles H. Foster
Harlan Builders
Dave Maupin
Dr. O. M. Juhler
Steven F. Mores
Jack Noble
Bruce Ouren
Dennis E. Stamp
H. S. Vanderlinden

HOMESTEAD

Edward A. Pundt

HUBBARD

D. W. Heineking, Inc.
Marvin R. Nygaard

HUMBOLDT

Dr. T. F. Bartley
Joe Dodgen
Dr. Dean C. Harmon
Humboldt Concrete Prod.
Ed Warren
Humboldt Implement Company
M. E. Johnson
Jennings Clothiers
C. H. Lewellyn
Bob Mickey Motors
Herbert Moench
Dr. M. L. Northup
Sande Construction & Supply

HUXLEY

James N. Hall
John W. Trunkle

IDA GROVE

Clayton Whitney

INDEPENDENCE

Wapsie Valley Creamery, Inc.
W. C. Nielsen

INDIANOLA

Robert M. Wolfe

IOWA CITY

Hugh A. Dunlap

IOWA FALLS

Concrete Products Company
Luke Altfillisch
R. C. Haltom
King Construction Co.
Prestressed Concrete
James Boehmlier, Jr.

IRVINGTON

Dole Construction Co.

IRWIN

Irwin Farm Supply

JEFFERSON

Elmer F. Eggimann
Kern Elerick
Home State Bank
Gerald Clause, Pres.
Miller Realty
Leonard Miller
Wayne M. Rush
M. H. Stepleton
Del Van Horn

JEWELL

William A. Minert
Dr. C. L. Nelson

KANAWHA

Farmers State Bank
Dr. Leon Henning

KELLEY

Froning & Deppe
Dan Froning

KINGSLEY

Dr. William E. Brown

KNOXVLE

Vernon R. Bruce
Dr. Sam T. Coughlin
Golf Brothers
Thomas & William Goff
Knoxville Veterinary Clinic
Marion County Savings & Loan
Dave Gruhn

LAKE CITY

Bowie Mfg., Inc.
Dr. M. C. Bowie
Bruce Fell
Dr. James C. McCaulley
Dr. Martin McKenney
James Richardson

LAKE MILLS

Lake Mills Lumber

LAKOTA

Dr. Craig M. Ellsworth

LAMONI

Lamoni Farms, Inc.

LA PORTE CITY

Joe S. Brandt

LATIMER

Jeffery L. Henning

LAURENS

Fred J. Ludwig
Dan G. Younggreen

LEHIGH

Dale Westre

LENEX

Richard L. Wilson

LOGAN

Clinton Keay

LOST NATION

Dr. Ken Randolph

LYTTON

Wayne Grodahl
Wayne Jackson

MANCHESTER

Florian Neuroth
John Vermazen

MANLY

Manly State Bank
Williams Parks

MANNING

Leo J. Bruck
Claus H. Bunz
Ivan Opperman
Puck Implement
W. C. Puck

MANSON

Randy Christensen
Dalton Press, Inc.

MAQUOKETA

Edward L. Tubbs
Nolan Zugschwerdt

MARION

Jack Fitzgerald
Klopfenstein, Wogan &
Mangold, D.V.M.

MARSHALLTOWN

Arbie Mineral Feed Co.
James H. Boyd
Jim Breed's Standard, Inc.
Wayne H. Britten
Glenn F. Brockett
Walter E. Brown
Burkhart-Jensen, Inc.
Graham M. Condie
William H. Edens
Dean Garland
Dr. John Garland
Dr. Douglas D. Hildebrand
Verle J. Hunt
R. W. Kemler
Gordon Leth
Lynk Bros. & Baird
Earl W. Olson
Walter Lyons
Pat Manning Chevrolet
Marshall Office Supply
Marshall Printing Co.
Meeker's Dry Cleaners
Charles B. Hager
James R. Moore
Morrison Cabinet Shop
Robert Morrison
L. E. Myers Company
F. E. Ernst
Mike O'Toole
Roscoe W. Packer
Tom Shive
R. S. Stover Co.
John K. McKay
Larry Swartz
Dr. Tomas A. Underkofler
Dr. Russell H. Watt
William Whitehill, Jr.
D. Vincent Williams
Ralph W. Williams

MASON CITY

Frank Evans
First National Bank
Jack Nielsen, Pres.
Harlan W. Gilton
Green Mill Restaurant, Inc.
R. S. Papatonis
Hewett Wholesale, Inc.
Bill Hewett
Iowa Kemper Ins. Co.
E. C. Jones
Robert H. Isensee
Milton D. Kubicek
Dr. Ray F. Miller
Maynard Nelson
Ray Pauley Co., Inc.
Dr. Samuel D. Porter
Dr. William C. Rosenfeld
Frank Schmitz, Jr.
United Home Bank & Trust Co.
R. H. Isensee
Wallace, Holland, Kastler
& Schmitz
Dr. George West

McCALLSBURG

Alan Britten

MINBURN

Raccoon Valley State Bank
Leonard C. Wise

MITCHELLVILLE

Dr. Lawrence H. Birchmier

MONROE

Monroe Animal Clinic
Dr. Dayrl Horman

MT. AYR

Dixon-Elliott, Inc.
Jack Elliott
Herman Fennema
Mike Warin

MT. VERNON

Richard F. Brisbin
Dr. R. R. Voetberg

MOVILLE

First Trust and Savings
Howard Logan
Robert Logan

MUSCATINE

Thomas J. Hoopes
Paul C. Sandy

NEVADA

Steve Bodensteiner
Arthur W. Borton
Thomas J. Cahill
Jim Christy
Mert Coover Chevrolet
Robert Dunshee
Dr. Robert Eggers
Gold Electric Co.
John R. Hattery
Carl F. Hertz
Ray Lounsberry
Dr. Michael Neff
David Rapp
Jerry D. Rhodes
Ray Scott
Scudder's
Richard Settle
John Stark
Bob Williams

NEWTON

Frederick D. Collins
Jasper Co. Savings Bank
Joel Johnson
Robert Johnson
Meisner Electric Co.
Robert E. Nelson
Newton Animal Clinic
Newton National Bank
Robert L. Smith

NODAWAY

Scott and Bruning
Wayne Scott

NORTH LIBERTY

Kudrie, Carter Sheridan
Joseph Greslik

NORTHWOOD

Milo Pangburn

OAKLAND

Carrick Farm Supply
Vern Carrick
Ronald W. Wright

ODEBOLT

Dr. C. J. Schwartz

OGDEN

John C. Hunter
Ogden Bowl

ONAWA

Onawa State Bank
Gerald Anderson

OSAGE

Mitchell Co. Press News
Roger D. Poppen

OSKALOOSA

Garden Engineering Serv., Inc.
John W. Hesling
John W. N. Steddum
Mahaska Veterinary Clinic
Pizza Den
Irwin J. Garland
Pat Supple

OTTUMWA

Mrs. John Dotterer
George W. Evans
Robert H. Meier
Allen B. Sharp

PARKERSBURG

Parkersburg State Bank
Eldon Hoppenworth

PERRY

Bill W. Carstens
Carrol R. Collins
Lauterbach Chevrolet
Ray Lauterbach
Richard Lowe
Loren F. Marker
McAtee Tire Service, Inc.
David Goodrich
Perry State Bank
Mel Shanda

IOWA STATE UNIVERSITY

Cyclone Century Club

PLEASANTVILLE
Paul W. Harp
Steve D. Heaberlin

POCAHONTAS
Kleen & Peterson Ins. Agcy.

POSTVILLE
Citizens State Bank
Stan Martins

PRAIRIE CITY
J. L. McKlveen
Dr. J. W. Walker

RADCLIFFE
Gary Houck
Gary Larson

RANDALL
Randall-Story State Bank
C. B. Kinseth

REDDING
Craig Elliott

RED OAK
Vernon R. Hart
Red Oak Greenhouses
Dallas G. Johnson
Jerry Shellberg
Robert Tidgren

REINBECK
Marshall K. Harms
Verne R. Pauslian
Peterson Contractors, Inc.

RENWICK
John A. Walther

ROCKWELL CITY
Gidel & Knop Realty & Ins.
Earl B. Lemen

ROLFE
William Shimon

RUTLAND
Howard K. McDonough

SAC CITY
Wilmer Christian
Robert T. King
John H. Lewis
LeRoy V. Meyer
Sac City Boosters
Chuck Sayre
Neil Stadman
John J. Wassom

SCHLESWIG
Carlton Peterson

SHANNON CITY
Warren Kessler

SHENANDOAH
Co-op Oil & Supply
Walter F. Gourley

SIBLEY
Mike Fleming

SIOUX CITY
Wilbur D. Bennett
W. F. Chauncey
Fred Davenport
First National Bank
Holtze Const. Co.
H. S. Holtze, Jr.
Bernard Jones
L. H. Jones
Royal Lohry
Northwestern National Bank
Richard Pecaut
Dr. Don Rubel
Sioux City Engr. Co.
Sioux City Stockyards Co.
Standard Ready Mix Concrete
William H. Burke
Louis J. Tokar
William F. Turner

SLATER
Larson Lumber
Wayne Rimathe
Sievers & Sievers, D.V.M.
South Story State Bank
Lowell Soderstrom

SPENCER
George A. Heikens, Sr.
Spencer Const. Co.

STANHOPE
Dr. Jed W. Norris
Read Motor Company
Jack Read

STANWOOD
Robert McClellan

STATE CENTER
Central State Bank
Dee Brothers
Elmer Eggers
Glen Eggers
Randy Hilleman
Robert Nichols
Ralph White

STORM LAKE
Victor R. Eaton
William R. Lanphere
Shelp Const. Co.

STORY CITY
Gookin Ford Sales, Inc.
Lyle Helm
Albert Henryson
Edgar M. Ose

STRATFORD
Jeff Ahrens
Westrum Motors, Inc.

STUART
Roy A. Gilman
Morrison Chevrolet Co.
Hank Morrison
Stuart Vet Clinic

TABOR
First State Bank
L. F. Selko
Paul H. Kilpatrick

TAMA
Howard L. Poitevin

TITONKA
Donald G. Budlong

TRAER
Mike Rickard

VENTURA
Harbor Inn, Ltd.

VILLISCA
David L. Williams

VINTON
Louis L. Lyon

WALL LAKE
Glen Determan
John Goodenow
Jerry Schmitz

WAPELLO
Wayne E. Ryan & Sons
Wapello Vet Clinic

WATERLOO
Norris Annis
Paul R. Brasch
Crossroads Ford
Bill Burton
Al Goettsch
David C. Hendrickson
Milford L. Hurst
William D. LeCompte
George A. Loveall, Jr.
Midwest Food Supply
G. R. Moore
Matt Parrott & Son Co.
Calvin Peterson
John B. Young

WAUKEE
Leon L. Casten
Tom Torstenson

WAVERLY
Alfred Janssen
Waverly Publishing Co.
Edward Droste

WEBSTER CITY
Russ Cress
Clare H. Forrester
First State Bank
Jack Marget
Lynn Habben
Gerald Hunter
Donald D. Johnson
Newell S. Johnson
Elmer H. Larson
Howard Meyers
Nissen Packing Co.
Robert Nissen
John J. Olson
Dr. J. L. Placek
Tom Riemenschneider
Ray Schlotfeldt

Seneca Foundry Inc.
Charles R. Stark, Jr.
Jerry Struck
Dr. Robert L. Veach
Webster City Savings & Loan
Ellis Swon
Ken Youngsdale

WELLMAN
Baxter Freese

WEST LIBERTY
Dr. John W. Carey

WHEATLAND
Harold R. Lohmann

WILLIAMS
Williams Savings Bank
J. R. Hensley

WILLIAMSBURG
John G. Cochran

WILTON
Allen Keppy

WINTERSET
Collins Funeral Home
R. W. Collins

WOODWARD
Dean and Kay Christian

WOOLSTOCK
Hamer's Hampshires

OUT OF STATE
John R. Alt
Grand Rapids, Mich.

Kenneth F. Ames
Peoria, Ill.

Dale E. Anderson
Omaha, Nebr.

Walter C. Berger
Baltimore, Md.

R. W. Blumenschien
Omaha, Nebr.

Edward J. Bock
St. Louis, Mo.

Clifford M. Bosworth
Lexington, Ky.

Amos J. Bower
Spokane, Wash.

Robert O. Brown
Overland Park, Ks.

Craig Burroughs
New Lenox, Ill.

David M. Butler
Tempe, Ariz.

J. R. Castner
Madison, Wisc.

J. Howard Dunn
Oakmont, Pa.

Richard A. Eggers
Fairview, Pa.

James H. Ellis
Lincoln, Nebr.

J. P. Eves
Sun City, Ariz.

Robert C. Fields
Chicago, Ill.

David C. Garfield
Saddle River, N. J.

Murray C. Gautsch
Vero Beach, Fla.

Charles S. Graber
Elmhurst, Ill.

Richard S. Grant
Toledo, Ohio

Dr. B. J. Gray
Valley Forge, Pa.

Robert W. Hollin
Dallas, Texas

Kenneth Huckle
Jenkintown, Pa.

George C. Hupp
Ottawa, Ill.

Charles H. Ineck
Bridgeton, N. J.

Kenneth Kampfe
Omaha, Nebr.

Jean Kroeger
Sioux Falls, S. D.

Harry P. Lortz
Coleridge, Nebr.

Judson McGuire, Jr.
University Park, Md.

Sam McMaster
S. Sioux City, Nebr.

Ronald L. McVey
Houston, Texas

Robert F. Mail
Aurora, Ill.

Mallory Constructors, Inc.
James N. Griswold
Los Angeles, Calif.

Rowland R. Manatt
Houston, Texas
Dr. Orville Minton
O'Fallon, Ill.
Dwight E. Nichols
Tulsa, Okla.
Vincent W. Nielsen
Dundee, Ill.
Arlo W. Paul
Milwaukee, Wis.
David Queal
Sioux Falls, S. Dak.
William H. Reinhardt, Jr.
Centralia, Mo.
John V. Reints
St. Charles, Ill.
Steve Remington
Omaha, Nebr.
Henry B. Rohwer, II
Willowbrook, Ill.
Dr. Darrel Sampson
Prophetstown, Ill.
R. H. Schermer
Columbus, Nebr.
Harry Shephard
Bedford, Va.
Tracy R. Smith
Pensacola, Fla.
Walter A. Smith
Estes Park, Colo.
Paul J. Telch
Syracuse, N. Y.
Charles C. Tice
Neenah, Wisc.
Lawrence R. Tollenaere
South Pasadena, Ca.
Thomas S. Van Galder
Maryland Heights, Mo.
Charles Vogt
Overland Park, Ks.
Robert Waldo
Aurora, Ill.
Alfred W. Warren
Glencoe, Ill.
Ralph Williams
Naples, Fla.
Esther J. Wilson
Dallas, Texas
W. Lee Wiltzie
Santa Ana, Ca.
James Winey
White Bear Lake, Mn.

IOWA STATE UNIVERSITY

Cyclone Century Club

EARLHAM

Donald Maas

ELDORA

William C. Dagit
Cecil F. Rooks
Dennis Wood

ELDRIDGE

David E. Stephens

ELLSWORTH

Dwayne Hill
Wallace Iverson
Vernon E. Peterson
Emery Tegland
Thompson Hatcher
Dale Cook

EMMETSBURG

Bill Brennan
Emmetsburg Grain Co.
James M. Thompson
Dr. William Frevort
John Kerber
Jerome Klepper
Ted's Super Valu

ESSEX

Keith Carlson
J. C. Mecom

FAIRFIELD

Fairfield Eng. & Mfg. Co.
Clyce D. Palmer

FOREST CITY

Robert V. Fowser
Donald E. Snyder
Glen Wilson, Jr.

FORT DODGE

Dr. Hoyt H. Allen
All Wheel Drive Co.
Arnold Motor Supply
Larry Wegner
Assoc. Engrs., Inc.
Bob Payer
Dan W. Barrett
Bob's Tire Service
Brokaw Supply Company
W. E. Brokaw, Jr.
Robert Clawson
Dairy Queen
Tom Pinkert
Fred M. Dalvey
Ed DeBaKey
Bernard J. Ermels
John Evans
Rachel Evans
Farm Bureau Ins. Services
Vern Renken
First National Bank
Earl J. Underbrink
Pete Garatoni
William S. Gibb
Leon Griffin
John E. Hayes
Neil Hinds
Floyd D. Huling
Joseph Jackson
Roland B. Jacobs
Everett Johnson
Richard L. Jorgensen
Josephson Radiator Shop
Kautzky's Sporting Goods
Kersten, Ophelm, Carlson & Estes
Jerry Killip
Levin Chevrolet Co.
Dr. & Mrs. J. G. McCarroll
W. C. McCarten
J. Gerald McGigue
Harlan Pfaff
Robert Pingel
Quality Plus Products
Tom Schmoker
Dr. James D. Rhodes
Ridgewood Lanes
Willis Warner & Don Larson
John E. Rowles
Lloyd C. Schubert
The State Bank
Richard Smith, Pres.
Swaney Equipment Co.
George H. Lawler
Shirley Thornton
Dr. Richard C. Tripp
Union Trust & Savings Bank
Pete Garatoni, Pres.
Russell Whitney
Dr. Ralph Yoder

GARNER

Edward D. Buntentbach
Donald Greiman
Dr. Henry G. Voetberg

GARWIN

Jim Griffin

GLADBROOK

John Putney

GLIDDEN

Doug Doyle
Glidden Farm Equip.
Curtis E. Hofstad
A. Moorehouse Company
Fred Rudl

GOWRIE

Jack D. Burnett
Doug Miller

GRAND JUNCTION

Robert Clause
Roger Clause
Melvin W. Karber
Lynn D. McConnell

GRINNELL

James W. Buck
Dr. Merle Doty
L. G. Keeney
Donald L. Pederson
Mike Peterson

GREENFIELD

Feeders Service, Inc.
Dean Holland
McCunn Implement Co.

GRIMES

John Olson

GRISWOLD

Charles and Cindy Miller

GRUNDY CENTER

Ralph A. Anderson
Keith E. Carter
Royce J. Fichtner
Frederick Furniture, Inc.
Keith Myers
Spokesman Press

GUTHRIE CENTER

Dr. John P. Glenn

HAMPTON

Jopseh Barr
A. C. Benton, Inc.
Brown & Brown
Mr. Ed's
Sorenson Olds-Cadillac

HARLAN

Charles H. Foster
Harlan Builders
Dave Maupin
Dr. O. M. Juhler
Steven F. Mores
Jack Noble
Bruce Ouren
Dennis E. Stamp
H. S. Vanderlinden

HOMESTEAD

Edward A. Pundt

HUBBARD

D. W. Heineking, Inc.
Marvin R. Nygaard

HUMBOLDT

Dr. T. F. Bartley
Joe Dodgen
Dr. Dean C. Harmon
Humboldt Concrete Prod.
Ed Warren
Humboldt Implement Company
M. E. Johnson
Jennings Clothiers
C. H. Lewellyn
Bob Mickey Motors
Herbert Moench
Dr. M. L. Northrup
Sande Construction & Supply

HUXLEY

James N. Hall
John W. Trunkle

IDA GROVE

Clayton Whitney

INDEPENDENCE

Wapsie Valley Creamery, Inc.
W. C. Nielsen

INDIANOLA

Robert M. Wolfe

IOWA CITY

Hugh A. Dunlap

IOWA FALLS

Concrete Products Company
Luke Altfillisch
R. C. Haltom
King Construction Co.
Prestressed Concrete
James Boehmlier, Jr.

IRVINGTON

Dole Construction Co.

IRWIN

Irwin Farm Supply

JEFFERSON

Elmer F. Eggmann
Kern Elerick
Home State Bank
Gerald Clause, Pres.
Miller Realty
Leonard Miller
Wayne M. Rush
M. H. Stepleton
Del Van Horn

JEWELL

William A. Minert
Dr. C. L. Nelson

KANAWHA

Farmers State Bank
Dr. Leon Henning

KELLEY

Froning & Deppe
Dan Froning

KINGSLEY

Dr. William E. Brown

KNOXVILLE

Vernon R. Bruce
Dr. Sam T. Coughlin
Golf Brothers
Thomas & William Goff
Knoxville Veterinary Clinic
Marion County Savings & Loan
Dave Gruhn

LAKE CITY

Bowie Mfg., Inc.
Dr. M. C. Bowie
Bruce Fell
Dr. James C. McCaulley
Dr. Martin McKenney
James Richardson

LAKE MILLS

Lake Mills Lumber

LAKOTA

Dr. Craig M. Ellsworth

LAMONI

Lamoni Farms, Inc.

LA PORTE CITY

Joe S. Brandt

LATIMER

Jeffrey L. Henning

LAURENS

Fred J. Ludwig
Dan G. Younggreen

LEHIGH

Dale Westre

LENOX

Richard L. Wilson

LOGAN

Clinton Keay

LOST NATION

Dr. Ken Randolph

LYTTON

Wayne Grodahl
Wayne Jackson

MANCHESTER

Florian Neuroth
John Vermazen

MANLY

Manly State Bank
Williams Parks

MANNING

Leo J. Bruck
Claus H. Bunz
Ivan Opperman
Puck Implement
W. C. Puck

MANSON

Randy Christensen
Dalton Press, Inc.

MAQUOKETA

Edward L. Tubbs
Nolan Zugschwerdt

MARION

Jack Fitzgerald
Klopfenstein, Wogan &
Mangold, D.V.M.

MARSHALLTOWN

Arbie Mineral Feed Co.
James H. Boyd
Jim Breed's Standard, Inc.
Wayne H. Britten
Glenn F. Brockett
Walter E. Brown
Burkhart-Jensen, Inc.
Graham M. Condie
William H. Edens
Dean Garland
Dr. John Garland
Dr. Douglas D. Hildebrand
Verle J. Hunt
R. W. Kemler
Gordon Leth
Lynk Bros. & Baird
Earl W. Olson
Walter Lyons
Pat Manning Chevrolet
Marshall Office Supply
Marshall Printing Co.
Meeker's Dry Cleaners
Charles B. Hager
James R. Moore
Morrison Cabinet Shop
Robert Morrison
L. E. Myers Company
F. E. Ernst
Mike O'Toole
Roscoe W. Packer
Tom Shive
R. S. Stover Co.
John K. McKay
Larry Swartz
Dr. Tomas A. Underkoffler
Dr. Russell H. Watt
William Whitehill, Jr.
D. Vincent Williams
Ralph W. Williams

MASON CITY

Frank Evans
First National Bank
Jack Nielsen, Pres.
Harlan W. Gorton
Green Mill Restaurant, Inc.
R. S. Papatonis
Hewett Wholesale, Inc.
Bill Hewett
Iowa Kemper Ins. Co.
E. C. Jones
Robert H. Isensee
Milton D. Kubicek
Dr. Ray F. Miller
Maynard Nelson
Ray Pauley Co., Inc.
Dr. Samuel D. Porter
Dr. William C. Rosenfeld
Frank Schmitz, Jr.
United Home Bank & Trust Co.
R. H. Isensee
Wallace, Holland, Kastler
& Schmitz
Dr. George West

McCALLSBURG

Alan Britten

MINBURN

Raccoon Valley State Bank
Leonard C. Wise

MITCHELLVILLE

Dr. Lawrence H. Birchmier

MONROE

Monroe Animal Clinic
Dr. Dayrl Horman

MT. AYR

Dixon-Elliott, Inc.
Jack Elliott
Herman Fennema
Mike Warin

MT. VERNON

Richard F. Brisbin
Dr. R. R. Voetberg

MOVILLE

First Trust and Savings
Howard Logan
Robert Logan

MUSCATINE

Thomas J. Hoopes
Paul C. Sandy

NEVADA

Steve Bodensteiner
Arthur W. Borton
Thomas J. Cahill
Jim Christy
Mert Coover Chevrolet
Robert Dunshee
Dr. Robert Eggers
Gold Electric Co.
John R. Hattery
Carl F. Hertz
Ray Lounsberry
Dr. Michael Neff
David Rapp
Jerry D. Rhodes
Ray Scott
Scudder's
Richard Settle
John Stark
Bob Williams

NEWTON

Frederick D. Collins
Jasper Co. Savings Bank
Joel Johnson
Robert Johnson
Meisner Electric Co.
Robert E. Nelson
Newton Animal Clinic
Newton National Bank
Robert L. Smith

NODAWAY

Scott and Bruning
Wayne Scott

NORTH LIBERTY

Kudrie, Carter Sheridan
Joseph Greslik

NORTHWOOD

Milo Pangburn

OAKLAND

Carrick Farm Supply
Vern Carrick
Ronald W. Wright

ODEBOLT

Dr. C. J. Schwartz

OGDEN

John C. Hunter
Ogden Bowl

ONAWA

Onawa State Bank
Gerald Anderson

OSAGE

Mitchell Co. Press News
Roger D. Poppen

OSKALOOSA

Garden Engineering Serv., Inc.
John W. Hesling
John W. N. Steddum
Mahaska Veterinary Clinic
Pizza Den
Irwin J. Garland
Pat Supple

OTTUMWA

Mrs. John Dotterer
George W. Evans
Robert H. Meier
Allen B. Sharp

PARKERSBURG

Parkersburg State Bank
Eldon Hoppenworth

PERRY

Bill W. Carstens
Carrol R. Collins
Lauterbach Chevrolet
Ray Lauterbach
Richard Lowe
Loren F. Marker
McAtee Tire Service, Inc.
David Goodrich
Perry State Bank
Mel Shanda

Nelson Named to ISU Alumni Post

Carla Nelson of Ames has joined the Iowa State University Alumni Association staff as coordinator of special projects. Don F. Gustofson, executive director of the association, has announced.

Nelson, a 1962 graduate of the University of Minnesota, serves as adviser to the ISU Student Alumni Association, which won national awards the last two years as one of the best new student-alumni programs in the country. The program

involves more than 200 students each year in student and alumni service activities for Iowa State.

In addition, Nelson serves as advisor to the ISU Parents Association, a service organization whose members are parents of current students.

Nelson, who had served as student activities advisor at the University of Minnesota, succeeds Kathryn Andre, Ames.

Announce 1976-77 Winter Farm Operation Program at ISU

Iowa State University's 1976-77 winter quarter Farm Operation Program will be held from November 26, 1976 to Feb. 25, 1977 with enrollments being accepted now.

The three-month course is designed primarily for young people who desire more knowledge in agriculture but are presently too actively involved in farming to attend school during the entire academic year.

The winter quarter program provides an opportunity for prospective students to enroll in the abbreviated program before committing themselves to a two or four-year curriculum.

Courses taken in the winter quarter curriculum are practical and applied and include study in the areas of animal science, machinery management, crops, soils, farm management and welding. All courses are for college credit and may be applied to a two-year certificate or four-year bachelor's degree.

The only requirement for admission to the program is graduation from high school. Specific information on admission and course offerings may be obtained from James Schneider, farm operations department, Iowa State University, Ames, Iowa 50010.

At The Iowa State Center



These are good days for big band fans at Iowa State. Tonight Les Elgart and his "band with the dancing sound" are doing the first concert and dance of its kind in Hilton Coliseum so you can dance or listen from 9 p.m. to 1 a.m. Then on Friday, November 12, the eve of the final home game with Nebraska, Harry James and his swinging band are coming to Stephens Auditorium. That ought to heat things up a bit before Saturday's kickoff.

Harry James still enjoys great popularity around the country, dating back to the late 1930s and into the 1940s when big bands were in their heyday. James had been with the Ben Pollack and Benny Goodman orchestras before organizing his own band in 1939. The band's breakthrough came with the recording in 1941 of "You Made Me Love You," an old number that enjoyed a revival on every juke box in the country. The record sold more than a million copies.

Harry James helped launch the careers of several vocalists, including Frank Sinatra, Dick Haymes, Kitty Kallen and Helen Forrest. For more than 20 years the great trumpet player was married to Betty Grable, the favorite pin-up girl of the 40's.

Tickets for the Harry James concert go on sale Monday for \$5, \$4, \$3 at the Iowa State Center, Hub Ticket Office and other Iowa State Center ticket outlets around the state.

A belated Homecoming event is scheduled for Wednesday, November 10, when The Eagles per-

form in Hilton Coliseum at 8 p.m. Tickets for the appearance of the popular group are on sale now for \$8, \$7 and \$6.



WAVERLY CONCERT

The last of the fall-quarter concerts in Stephens Auditorium will be presented by The Waverly Consort and by Fred Waring and His Young Pennsylvanians. The Waverly Consort, nine instrumentalists and singers who present music from the 12th through 17th centuries, will open the Music Series at 3 p.m. Sunday, November 14. Tickets go on sale Monday at \$5, \$4 and \$3, with a \$1.50 discount offered to students. Fred Waring and his troupe return for their fifth Thanksgiving Day appearance in the seven-year history of Stephens Auditorium at 8 p.m. Thursday, November 25. Tickets for the Waring show go on sale November 8 at \$6, \$5 and \$4, with a \$1 discount for students.



LES ELGART



HARRY JAMES

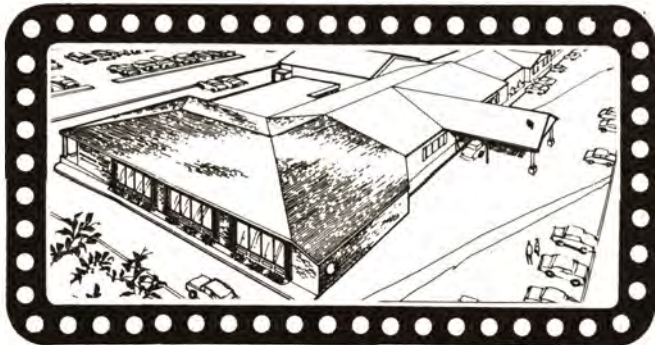


FRED WARING

**On the way home or anytime
make your next overnight stay
at the.....**

IMPERIAL INN

BOONE, IOWA • RESERVATIONS (515) 432-4322



**Enjoy Exciting Live Entertainment, Superb
Dining and Personal Service at the Imperial
Inn!**



123 Kellogg • Phone 232-1911

AMES' FIRST DISCO!

- **Game Room - Party Room**
- **Giant 7-foot Color TV-Free!**
- **Free popcorn and Schlitz on Tap**

**BUY 3 PITCHERS —
GET THE FOURTH FREE!**

Joe Shaddy - Proprietor



REED Cadillac-Olds

INCORPORATED

**Good Fair deals on all new and
used cars followed by quality
service that's Total Satisfaction.**



YOUR KEY TO TOTAL SATISFACTION

REED Cadillac-Olds



222 DUFF, AMES, IOWA 50010

TELEPHONE: AMES, IOWA 515-232-4081
DES MOINES EXT. 515-244-4082



**Food with the home-
cooked flavor!**

Open 7 days a week



Wutzundar...

**The bar built in four-part
harmony, with feeling.**

After the game join us for the best in food and your
favorite beverage. Live entertainment most every
night in "Wutzundar."

Both located across from the old I.S.U. Stadium

Have it your way[®] **BURGER KING[®]**

209 LINCOLN WAY • AMES, IOWA

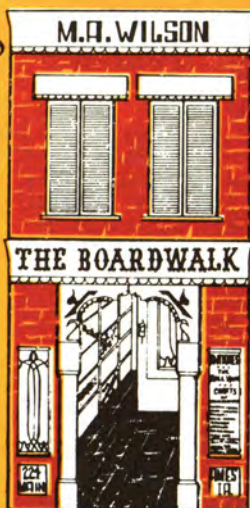
ANTIQUES

ANTIQUES

Walnut
Rockers

Printer's
Type

Miniatures



Penny Fortune
Telling Scales

Jewelry

ANTIQUES

Old Printer's
Drawers

Furniture

THE BOARDWALK

FURNITURE WAREHOUSE
111 North Russell
Telephone: 515/232-1256
Ames, Iowa 50010

HOURS
12 - 6:00 Mon. - Sat.
12 - 6:00
Sun. (1st of each Month)



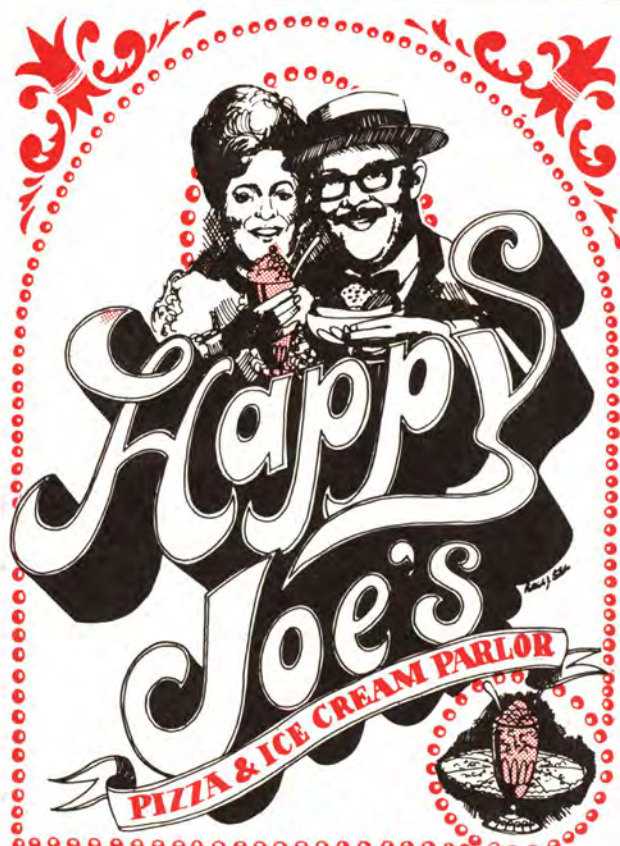
McAtee
Tire
Service
AMES, IA.

- Complete Farm, Truck and Auto Tire Service
- Front End Alignment and Complete Brake Service
- Shock Absorbers and Installation
- Midwest's Largest Retread Facility

Russ Crowner
Co-Owner & Manager

2910 South Duff • Phone: 232-6003

GOOD YEAR
For more good years in your car



436 South Duff (Hwy. 69) — Phone: 232-3040
Ames, Iowa

ISU's #1 Fan Club Stop

for:
ISU Sweatshirts
Rugby Shirt
T-Shirts
Sweaters
Ponchos
Umbrellas
Hats
Scarves
Jewelry
Souvenirs
Newspapers
Magazines
Candy

Open All Day
Saturday
9 a.m. to 5 p.m.



Campus Book Store

2300 Lincoln Way

Ames, Iowa 50010

Phone: 292-1616

James W. Bell
Co., Inc.
Construction Equipment

CEDAR RAPIDS

DES MOINES

FORT DODGE



Take command of your future as an officer in the U.S. Navy.

There aren't many men in this world who can qualify for command of a ship. Few positions of responsibility are harder won...earn more respect...and offer a greater sense of personal accomplishment.

Think you've got that something special it takes to work toward this kind of position...and to master the rigorous training and discipline that will be required of you?

If you can honestly answer "yes" to this question... and can back up your "yes" with a good solid educational background...and meet the other qualifications demanded of a Naval officer, then the Navy will give you every opportunity to work your way up to a position of command.

There's no better time than now to find out if this is the kind of future you're looking for. And if you're the kind of man the Navy is looking for. Stop in and have a talk with your Navy recruiter. Or phone this number:

LT. Dale Hendricks
46 Dickman Ave.
Fort Des Moines
Des Moines, Ia.
(515) 284-4523

IOWA ROAD BUILDERS'

CYCLONE SCOUTING REPORT

Kansas State brings one of the better defenses in the Big Eight Conference to Ames today in hopes of getting its first league victory of the year.

When one discusses the best pair of linebackers in the league, Gary Spani and Carl Pennington are almost always the first ones brought up and after looking at Wildcat game films it's easy to see why. Spani, all-Big Eight as a sophomore last fall, is averaging over 15 tackles a game and is touted as an All-America candidate.

With the exception of two games, against highly rated Texas A & M and Nebraska, the Wildcats have been stingy in allowing points and that could become an interesting confrontation this afternoon as Iowa State ranks among the nation's top five in scoring offense with a 33.6 point per game average.

The Wildcat offense has relied heavily on freshmen and sophomores and at one time started an all-freshman backfield. Injuries and ineligibility have hurt the Kansas State stability at quarterback and both Wendell Henrikson and Duane Howard should play there today.

Freshman Roosevelt Duncan is the Cats leading rusher with 241 yards in 40 carries. Henrikson tops the passers with a 50% completion average while Manzy King has been the favorite target of the passers with 13 receptions for 140 yards.

The Wildcats have beaten Brigham Young and bowed in order to Texas A&M, Wake Forest, Florida State, Missouri, Nebraska and Kansas. The Missouri game, for instance, was 28-21 and not decided until late in the fourth quarter.

Last year the Cyclones won a 17-7 game in Manhattan on a Glover Rogers touchdown catch and a field goal in the fourth quarter. Two years ago ISU won its Homecoming game against KSU, 23-18.



IOWA ROAD BUILDERS
AMES IOWA Phone 233-2005

- ★ READY-MIX CONCRETE
- ★ ASPHALT SURFACING
- ★ CONCRETE PAVING
- ★ UNDERGROUND UTILITIES

Deep Pan Pizza
Whole Wheat Pizza
Dessert Pizza

Baked Sandwiches
Submarines
Salad bar



THE GREEN PEPPER



Cyclone Country's
Best!

113 Welch • 292-1460



Agencies

**Representing
Major Insurance Companies**

ALFRED L. STOLL	F. BLAINE JENKINS
NEAL J. POPELKA	DEAN R. KNUTSON
STEVE OSTRUM	DOUG BERGMANN

Telephone: 232-6401

426 5th Street • Ames, Iowa 50010



JOIN

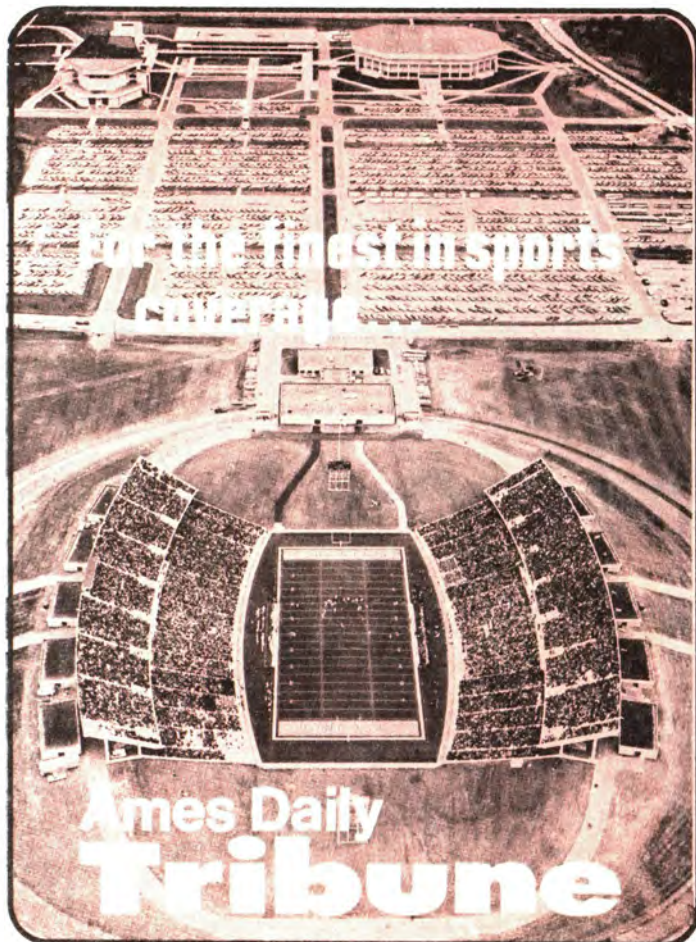
**PETE
TAYLOR**

and DAN GRIMM

**FOR LIVE PLAY-BY-PLAY OF ALL 1976
CYCLONE FOOTBALL GAMES ON.....**



RADIO 1350



**FOR AN
ENJOYABLE EVENING
JOIN US at**

**PALMAS
RESTAURANT & LOUNGE**

**THE ULTIMATE IN
STEAKS & SEAFOOD**

*After the game relax in our lounge & enjoy
your favorite cocktail.*

**Your Hosts -
James & Voula Palmas**

217 S. Duff Right next to Travelodge Ames

ISU MANAGERS



Back Row (l to r): Dean Hollrah, Mark Brauer and Steve Beilby.
Front: Jim Anderson, Jim Nelson and Keith Berkland.

Meet Me at

Minsky's

pizza joynt



118 Hayward, Campus Plaza

— OPEN 7 DAYS A WEEK —

- Take Out Service
- Two Party Rooms

**Ask About Our
Luncheon Specials and
Group Discounts**

Iowa State University

Department of Intercollegiate Athletics

Recognizes With Appreciation

the following Iowa Automobile Dealers

Twenty-two Iowa automobile dealers are playing a big part in promoting the Iowa State sports program this year. These fans—and they are rabid backers of all forms of athletic activity—provide the use of automobiles to the department throughout the year. Their program permits Iowa State to make more efficient use of its funds. The department of intercollegiate athletics is deeply grateful to these sports-minded boosters.



REED OLDSMOBILE-CADILLAC
LARRY & DON REED
222 Duff, Ames
(Cadillac-Oldsmobile)



GILLESPIE PONTIAC-OLDS
ARCHIE GILLESPIE
So. Marshall — Boone
(Pontiac-Oldsmobile)



RAPIDS CHEVROLET
BILL FLETCHER
601 First Ave., Cedar Rapids
(Chevrolet)



MATHISON MOTOR CO.
ART & DICK MATHISON
323 5th Ames
(Ford)



McLAUGHLIN BROS. CHEV., INC.
JOE & STEPHEN McLAUGHLIN
Belmond
(Chevrolet)



LEVIE CHEVROLET
LEO LEVIEN
Crossroads Center Ft. Dodge
(Chevrolet)



NUZUM LINCOLN-MERCURY
MEL NUZUM
So. Duff, Ames
(Lincoln-Mercury)



COOVER CHEVROLET
MERT COOVER
Lincoln Way Nevada
(Chevrolet & Oldsmobile)



CRESS LEASING
RUSS CRESS
Webster City



GEORGE WHITE CHEVROLET
GEORGE WHITE
Highway 69 & 30, Ames
(Chevrolet)



BENSON MOTORS
CARL BENSON
5th & Douglas, Ames
(Buick-Opel-American Motors)



MORRISON CHEVROLET CO.
HARRY & HANK MORRISON
Division Street Stuart
(Chevrolet)



BURKHART-JENSEN, INC.
DWIGHT BURKHART - BOB JENSEN
Marshalltown
(Ford)



LAUTERBACH CHEVROLET
RAY LAUTERBACH
805 Railroad Street Perr
(Buick & Chevrolet)



SORENSEN OLDS-CADILLAC
DEAN SORENSON
Hampton
(Olds-Cadillac, AMC, Chrysler-Plymouth)



PAT MANNING CHEVROLET
WILLARD LOOTS
Marshalltown
(Chevrolet)



CROSSROADS FORD, INC.
BILL BURTON
2033 LaPorte Rd. Waterloo
(Ford)



SKEIE MOTOR COMPANY
ART SKEIE
202 South Duff Ames
(Pontiac)



HERB MOFFITT'S, INC.
CLAYTON & STAN MOFFITT,
KERMIT ANDERSON
Boone
(Ford-Mercury-Lincoln)



READ MOTOR COMPANY
JACK READ
Highway 17 Stanhope
(Chevrolet)



CARDINAL and GOLD ENTERPRISES, INC.

Iowa State's Centralized Source For
Over 60 Cyclone Booster Items And
Souvenir Needs

*For more informaton about your Cyclone
Booster and Souvenir needs, write or call:*

CARDINAL and GOLD ENTERPRISES, INC.

3324 Jewel Drive • Phone: 232-2920
232-7004

Stop by one of our booths during the five home games.

North Grand
Rexall[®] DRUG, Inc.

NORTH GRAND SHOPPING CENTER



*Before the game...
After the game...*

*Anytime for any occasion.....
Join the Inn Crowd at.....*

Holiday Inn[®]

Our lounge offers the perfect setting for pre-game pep rallies and post-game celebrations. For meetings, parties, receptions.....you name it.....our food service is tailored to your specific needs.

Holiday Inn of Ames
316 South Duff
Phone: (515) 232-0280
Lyle Wilson, Innkeeper



THE BROILER

STEAKS SEA FOOD
COCKTAILS

For Reservations

Phone: 292-2516

Old Highway 30 West

THESE NORTH IOWA BUSINESSES BACK Our Cyclones!



90 Maynard Stensrud

63 Mike Stensrud

64 Tom Randall



THE FIRST NATIONAL BANK

of
MASON CITY



ON THE WEST SHORE OF BEAUTIFUL CLEAR LAKE

VENTURA, IOWA

A.C. BENTON INC.



"YOUR JOHN DEERE DEALER
FOR NORTH CENTRAL IOWA"

HAMPTON, IOWA

LAKE MILLS

FARMERS & MERCHANTS
STATE BANK

LAKE MILLS LUMBER CO.

VERNON HELGESON

ELI COLBY COMPANY

Producers of

Pot Luck

POTTING SOILS

Lake Mills, Iowa

CYCLONE FOOTBALL 1976

After three hours on
hard wooden bleachers,
spilled mustard and
a roaring crowd...
unwind and recuperate
with your friends at...

DUGAN'S DELI



TAKE A BREAK WHERE
OLD FRIENDS DRINK
REMODELED COMPLETELY
KOLD BEER-DRAFT
& CARRY-OUT
SERVICE WITH A SMILE

PRICES YOU CAN AFFORD
UCAN FIND US AT:
BEST BEER BUY

2816 WEST ST.
292-9864

Iowa Pork and Iowa State



Cyclone football players know that the "pigskin" is a tough and durable ball that can stand up to a lot of hard wear.

They also know that pork provides the kind of nutrition that will help them stand up to some hard work.

THAT'S WHY PORK IS A FAVORITE MEAT ON THE ISU TRAINING TABLE!

That's right . . . athletic trainers and nutritionists throughout the country are depending on today's high-quality lean pork to provide many essential elements and basic proteins that are required for strong and healthy bodies . . . without adding lots of fat forming calories.



FOOTBALL PLAYERS TRAIN ON PORK
WHY DON'T YOU
LOW ON CALORIES, HIGH IN NUTRITION, GREAT IN TASTE.
PORK



*Full Service Performance
at these Cyclone Country
Phillips 66 dealers....*

**REX SERVICE
STATION**

LINCOLN WAY
& FRANKLIN

**GARY THOMPSON
OIL CO.**

DISTRIBUTOR

**HERB'S "66"
SERVICE**

412 SO. DUFF

**INTERSTATE
"66" SERVICE**

I-35 & 30



"Cy" says . . .

Keep us in mind for all of your needs

JCPenney

North Grand Mall, Ames
Open Weekdays: 10:00 a.m. - 9:00 p.m.



A full line department store geared with the college student in mind.

The latest in fashion apparel for guys and gals.

Sporting goods, photography, auto center service, dorm needs, hardware, western wear, fabrics, and an easy order catalog desk.

**THE
CAVE INN**

126 WELCH

OPEN 11:00 AM GAME DAYS

**RATHSKELLER
LOUNGE**

DISCO

GAME ROOM • CARRY OUT BEER
MIXED DRINKS • TWO BARS

LUCKY Q

POOL, BAR, GAMES

HALF-BARREL

CARRY-OUT KEGS

BUD • PBR • SCHLITZ
OLD MILL • MICHELOB

Phone: 292-5046

SCHOENEMAN

**FARM AND HOME
IMPROVEMENT CENTER**

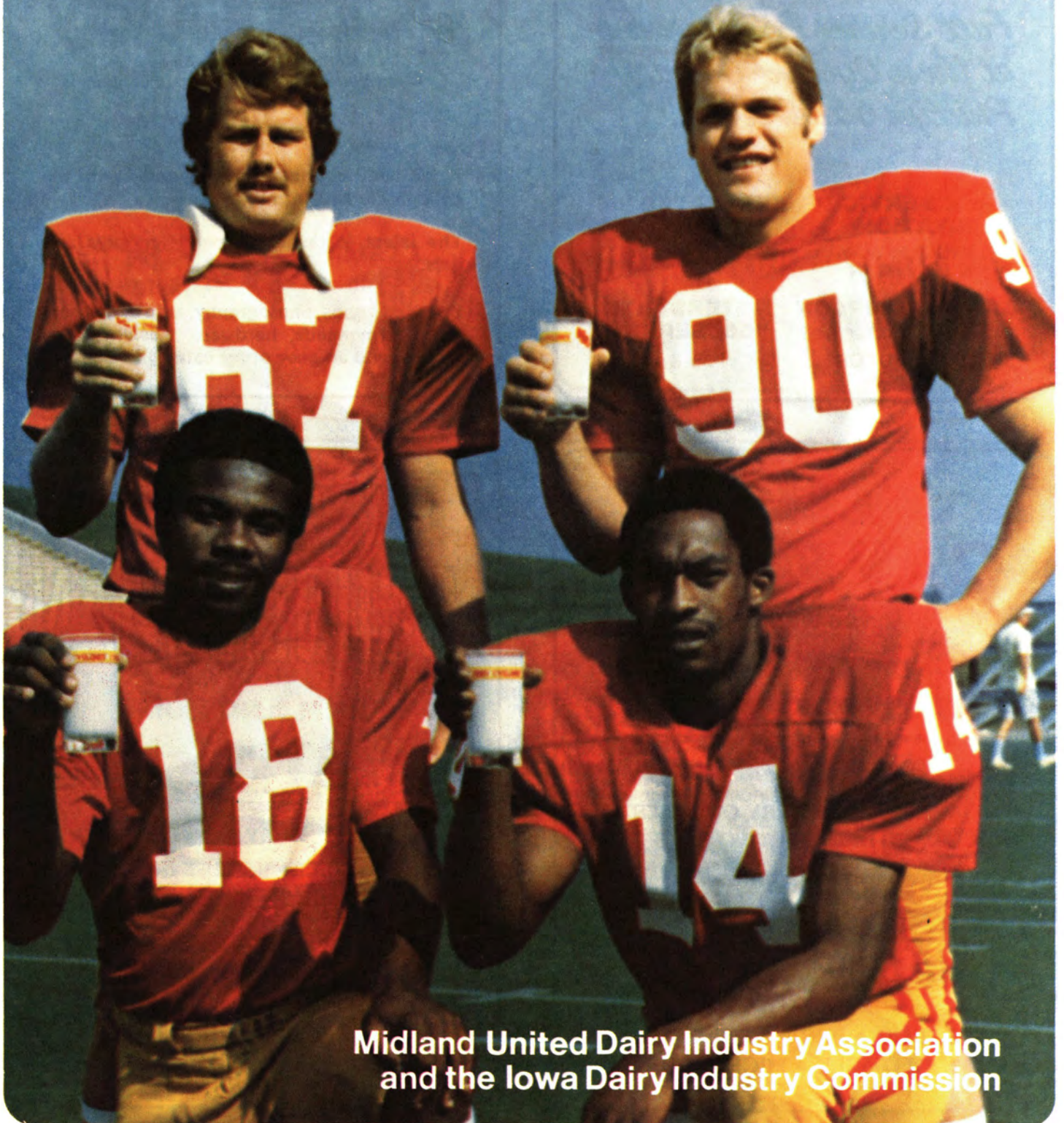
"Quality Service and Price"

LUMBER AND BUILDERS HARDWARE

Phone: 232-2372 • Ames, Iowa

Milk...

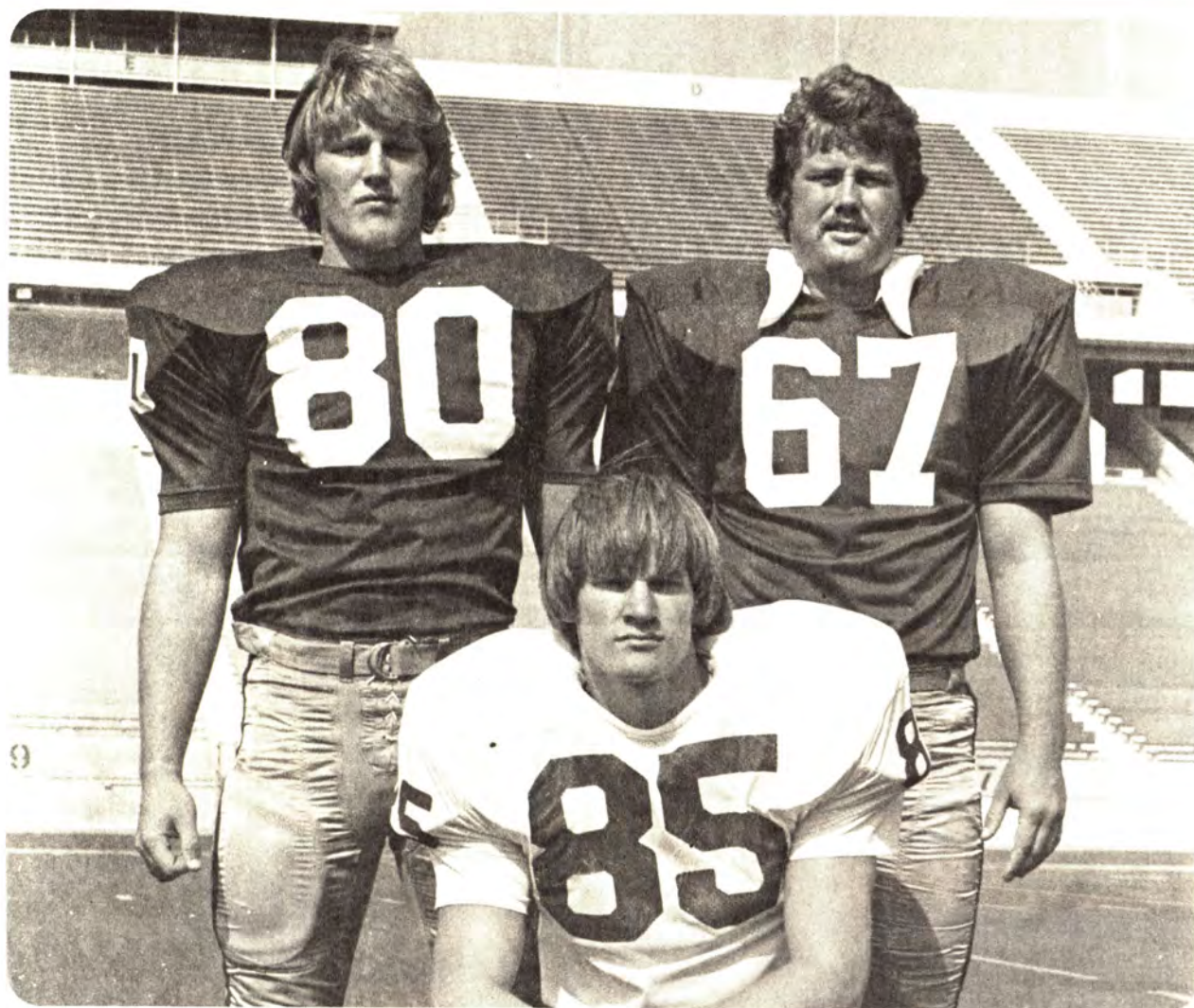
another member of the Cyclone Team!



**Midland United Dairy Industry Association
and the Iowa Dairy Industry Commission**

Pictured above: 67 DAVE GREENWOOD • 90 MAYNARD STENSrud • 18 WAYNE STANLEY • 14 TONY HAWKINS

Cedar Rapids is proud to be a part of the Cyclone Team!



80- TERRY EARNEST • 85- JIM NISSEN • 67- DAVE GREENWOOD

*The following Cedar Rapids Boosters proudly support their
three Cyclones from Cedar Rapids and the 1976 Cyclones:*

King's Builder Material, Inc.

Iowa Manufacturing Company

Blahnik Construction Company

Russell H. Anthony, D.V.M.

The Cedar Rapids Gazette

Shive-Hattery and Associates
(Consulting Engineers)

Collins Divisions - Rockwell International

Thermo King Des Moines Co.



5100 East Broadway - Box 3266
Des Moines, Iowa 50313
(515) 262-9317

Truck & Trailer Refrigeration
24 Hour Service



"Airline Tickets At Airport Prices."

PERSONAL SERVICES

Air—Ship—Rail—Tours—Cruises
Hotels—Car Rentals—Business Trips

Free customer parking



Telephone: 232-6640 • 104 Park Plaza, 6th & Duff

Enjoy today's game even more... with the Nissen Team!

DISTRIBUTED BY



CARRIAGE HOUSE

MEAT AND PROVISION COMPANY, INCORPORATED

PURVEYORS OF QUALITY
MEAT AND PROVISIONS
U.S. GOVT. INSPECTED

1131 DAYTON ROAD ■ AMES, IOWA 50010 ■ 232-2273

IOWA STATE UNIVERSITY



Department of Intercollegiate Athletics



MAL SCHMIDT
Executive Director
Cyclone Club



JIM OVERTURF
Business Manager



DAN ALFORD
Assistant Business Manager
— Tickets



IRV CHRISTENSEN
Assistant Business Manager
— Accounting



GARY ELLIS
Assistant Director
Cyclone Club



ATHLETIC COUNCIL

Control of the conduct of the Iowa State intercollegiate athletic program is vested in the Athletic Council, a board comprised of faculty, alumni, and students.

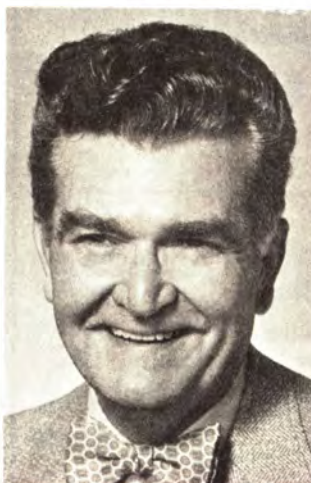
The 1976-1977 council includes the following:

Faculty—Tracy Clark, Hal Cowles, Ross Engel, Gene Futrell (recording secretary), Roy Keller, Rolland Knight (chairman), John Mahlstede (faculty representative to the Big Eight), Bert Nordlie, Dahlia Stockdale.

Alumni—Ray Hagie, Clarion; Ralph Olsen, Ellsworth; Gary Thompson, Ames (vice-chairman).

Students—John Arends, LaGrange, Ill.; Don Morris, Lancaster, Pa.; Denise Sofranko, Lovilia.

In addition, Lou McCullough, director of athletics, is an associate member; and the university treasurer is an ex-officio member.



HARRY BURRELL
Sports Information Director



ROD WILLIAMSON
Assistant Sports Information
Director



Present this AD on Game Days for one FREE Single with the purchase of one hamburger of any size.

Wendy's will present a Scholarship Award of \$100.00 to the ISU Alumni Achievement Fund in the name of the Outstanding Player for each home game. Selection will be made by the Cyclone Coaching Staff.

327 Lincoln Way • Ames, Iowa

**Outstanding Player
for
Utah Game
ROB STOFFEL**
Sr. — Off. Guard



* Earned highest grade given to an offensive lineman by Coaching Staff.

Wendy's will present a Scholarship Award of \$100 to the ISU Alumni Achievement Fund to honor Stoffel.



There's no substitute for quality in athletic equipment as well as in players and coaches. We're proud to supply part of the equipment used by the Iowa State Cyclones.

In stock for all seasons, 53 models of **adidas** shoes, for football, soccer, basketball, track, tennis and baseball.

WE SUPPLY ALL SPORTS IN ALL SEASONS

**JOHN SULLIVAN
GEORGE TURNER
VIC YOUNG**

**SALESMEN
DAN ROURKE
STEVE BOBENHOUSE
KENT ANDERSON
VIC OLSON
RON JESSEN**



adidas	Cramer	Bike	Coane
Holloway	MacGregor	Spalding	
Wilson	Riddell	Russell-Southern	
Sand-Knit	Converse	American-Athletic	

Vic Young
SPORTING GOODS INC.

415 NINTH ST. DES MOINES, IOWA 50309
(515) 243-1245



Our experienced travel consultants can arrange foreign or domestic tours, transportation, and accommodations perfect for your travel plans —at no extra cost to you!

WORLD WIDE
travel center, inc



**103 WELCH
CAMPUSTOWN
AMES**

Des Moines Phone: 292-3632 **Ames** Phone: 292-8182

North Grand
Phone: 292-1247

Dean and Josephine Knudson—Owners



Member of ASTA

TOUCHDOWN!



Colonel Sanders Kentucky Fried Chicken is a sure winner every time . . . with everyone. Best reason we can think of for you to visit one of the two convenient Kentucky Fried Chicken locations in Ames. Stop by after the game and sample Colonel Sanders winning recipe!

"FINGER LICKIN' GOOD"

Kentucky Fried Chicken



Visit our Colonels at these locations

Two Ames locations -

Kentucky Fried Chicken®

509 Lincoln Way

**North Grand
Shopping Center**

and...

**Atlantic
Iowa**

7th & Chestnut

**Boone
Iowa**

Mamie Eisenhower
& Division Street

**Okoboji
Iowa**

By the lake on Hwy. 71

"America loves what the Colonel cooks!"

Once again, TV service technicians give these opinions about Zenith:



We're proud of our record of building dependable quality products. But if it should ever happen that a Zenith product doesn't live up to your expectations—or if you want details of the service technicians' survey—write to the Vice President, Consumer Affairs, Zenith Radio Corporation, 1900 N. Austin Avenue, Chicago, Illinois 60639.

The Panorama IV. Sophisticated 25" diagonal console. A rich blend of soft Silver coloring and simulated Rosewood cabinetry. Model SH2541X. Simulated TV picture.

I. Best Picture.

Again this year, in a nationwide survey of the opinions of independent TV service technicians, Zenith was selected, more than any other brand, as the color TV with the best picture.

Question: In general, of all the color TV brands you are familiar with, which one would you say has the best overall picture?

Answers:

Zenith	34%
Brand A	21%
Brand B	12%
Brand C	8%
Brand D	7%
Brand E	4%
Brand F	2%
Brand G	2%
Brand H	2%
Other Brands	2%
About Equal	10%
Don't Know	4%

Note: Answers total over 100% due to multiple responses.

II. Fewest Repairs.

In the same opinion survey, the service technicians selected Zenith as the color TV needing the fewest repairs.

Question: In general, of all the color TV brands you are familiar with, which one would you say requires the fewest repairs?

Answers:

Zenith	38%
Brand A	18%
Brand D	9%
Brand B	6%
Brand C	5%
Brand E	3%
Brand F	2%
Brand G	2%
Brand H	2%
Other Brands	2%
About Equal	11%
Don't Know	10%

ZENITH

100% SOLID-STATE

CHROMACOLOR II

The quality goes in before the name goes on.