

C
Withdrawn
Iowa State College Library
IOWA STATE UNIVERSITY
Library of Science and Technology
1923-1924

AMES vs. KANSAS AGGIES



R.E. SMITH.

Matinee at all Three Theatres of Ames this afternoon. Sure something to be thankful for.



A.G. Spalding & Bros

803 Locust St.  Des Moines

Athletic Outfitters

Charlie Chaplin in "The Gold Rush"

AT AG HALL TODAY, TOMORROW AND SATURDAY

Now Showing

Dont Miss It

Hilarious hardship in the frozen north.

"The funniest and saddest of comedies."

"Side-splitting laughs, genuine thrills, honest tears."

Time of Shows

Today at 3 and 5.

Friday at 7 and 9.

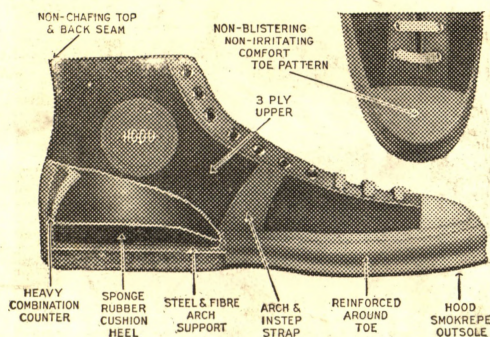
Saturday at 2, 4, 7 and 9.



"The Klondike gold rush, the lone prospector, dance hall girls, a blizzard, a hut toppling over a cliff. You will have aching sides and a lump in your throat."

Kinggrams
News Reels
"Built like a
newspaper"

Orchestra at the "Ames" Theatre enlarged to seven pieces. Try it.



The Greyhound

The Natural Combination Championships and Greyhounds

Hood is introducing another sensational feature in basketball shoes—THE COMFORT TOE PATTERN. Eliminates all toe blistering and chafing. The Sponge Cushion Heel, introduced by Hood *last season* and copied by competitors *this year*, together with the Steel and Fibre Arch Support, continue as features of the 1926 Greyhound. The improved Smokrepe sole guarantees perfect footing on any floor. A lower cut upper, extremely narrow shank with the arch and instep strap assures perfect fit and lighter weight. Safety, strength and service, without clumsy weight.

The Hood Rubber Products Co., Inc.

206-208-210 11th Street

Des Moines, Iowa

A. J. WYLIE, Manager

Lois Wilson has a dandy part in "Welcome Home" at the "Ames" Theatre today and tomorrow.

Beat The Kansas Ags

Ames Laundry

We use only soft water

Phone 47

Lowry & Theis

PRESCRIPTION DRUGGISTS

Eventually The Blue Inn Why Not Now?

The Ft. Dodge, Des Moines & Southern Transportation Company

Pierce Arrow Parlor and Reo Sedan Cars, clean, comfortable and beautifully finished are at your disposal.

Add to this beauty, an enduring comfort built into every part of this vehicle, safety that you can see and feel, and a force of drivers trained in both courtesy and driving—then you can understand why our Buses are so popular.

Ames, Iowa
Phone 199

G. E. MOTZ
General Office—Boone, Ia.
Phone 105

Des Moines, Iowa
106 Sixth Ave.
Phone Mar. 3205

Leave: Boone via Madrid—

8 A. M., 10 A. M., 4 P. M., 6 P. M., 8 P. M.

Arrive: Des Moines—

9:45 A. M., 11:45 A. M., 5:45 P. M., 7:45 P. M., 9:45 P. M.

Leave: Des Moines via Madrid—

8 A. M., 10 A. M., 4 P. M., 6 P. M., 11:15 P. M.

Arrive: Boone—

9:45 A. M., 11:45 A. M., 5:45 P. M., 7:45 P. M., 1 A. M.

Leave: Webster City via Boone—

8:35 A. M., 4:35 P. M.

Arrive: Des Moines—

11:45 A. M., 7:45 P. M.

Leave: Des Moines via Boone—

8 A. M., 4 P. M.

Arrive: Webster City—

11:10 A. M., 7:10 P. M.

Leave: Ames Campus via Ankeny—

7:30 A. M., 9:30 A. M., 11:30 A. M., 3:30 P. M., 5 P. M., 7:30 P. M.

Arrive: Des Moines—

9:00 A. M., 11:00 A. M., 1 P. M., 5 P. M., 6:30 P. M., 9 P. M.

Leave: Des Moines via Ankeny—

7:30 A. M., 9:30 A. M., 1:30 P. M., 3 P. M., 5:30 P. M., 11:15 P. M.

Arrive: Ames Campus—

9 A. M., 11 A. M., 3 P. M., 4:30 P. M., 7 P. M., 12:45 A. M.

Leave: Fort Dodge via Humbolt—

7 A. M., 12:30 P. M., 3:30 P. M.

Arrive: Algona—

9:35 A. M., 3 P. M., 6 P. M.

Leave: Algona via Humbolt—

7 A. M., 12:30 P. M., 4 P. M.

Arrive: Fort Dodge—

9:30 A. M., 3 P. M., 6:30 P. M.



IOWA STATE COLLEGE OFFICIAL ATHLETIC PROGRAM

Issued under the Supervision of

THE ATHLETIC COUNCIL
OF THE DEPARTMENT OF ATHLETICS
DIVISION OF PHYSICAL EDUCATION

Professor R. D. Paine, Division of Engineering, Chairman.

Professor E. R. Smith, Faculty at Large, Vice-Chairman.

Professor W. F. Guard, Division of Veterinary Medicine.

Professor B. W. Hammer, Division of Agriculture.

Professor J. E. Woodrow, Division of Industrial Science.

Professor H. H. Kildee, Faculty at Large.

F. H. Schleiter, of Ames, Alumni Association.

R. L. Cooper, of Boone, Alumni Association.

K. L. Maine, of Des Moines, Alumni Association.

Ralph Prunty, Class of 1926.

E. J. Anderson, Class of 1927.

Compiled and Edited by GEO. W. WESTCOTT

Advertising Manager, WARD R. ARNOLD

Price, 25c



Thomas Meighan in "Irish Luck," now showing at the Princess. Goes to the "Ames" tomorrow.

This Firm Built the Stadium
and is now building the
Collegiate Methodist Church
both for a
Greater Iowa State College

Fred M. Eller Co.

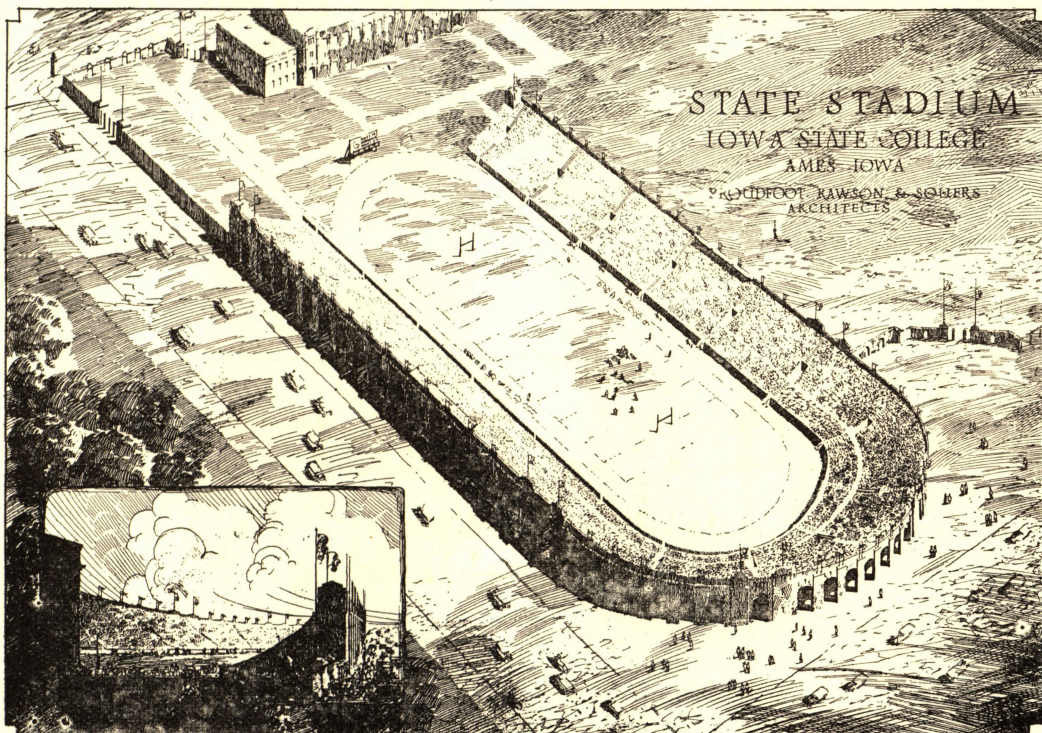
General Contractor
Ames National Building

We invite you to inspect our building
service, it is a monument to our efforts

THE IOWA STATE STADIUM

Two steps are contemplated in solving Iowa State's problem. The ULTIMATE plan calls for a U-shaped stadium, incorporating the present concrete bleachers and stretching entirely around three sides of State field. When completed this stadium will seat 35,000. The accompanying cut shows the architects' plan for the completed structure.

The IMMEDIATE plan evolved last spring called for the construction of the section of the complete stadium along the east side of the field. This section now completed is of the same length as the west concrete bleachers, but has enough additional rows to seat 8,900.

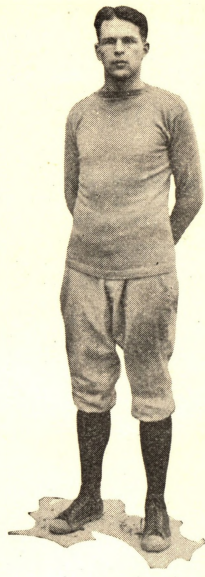


STADIUM CAPACITIES

1. West bleachers.....	5,600
2. Present addition.....	8,900
3. Extension of west bleachers	2,300
4. Final addition—elliptical section	11,000
East tower section	3,050
West tower section.....	3,050



HUGO OTOPALIK
Wrestling



BILL CHANDLER
Basketball



S. S. WILLAMAN
(Head Football Coach)



W. E. BEAN-
BLOSSOM
Cross Country

THE PURITAN

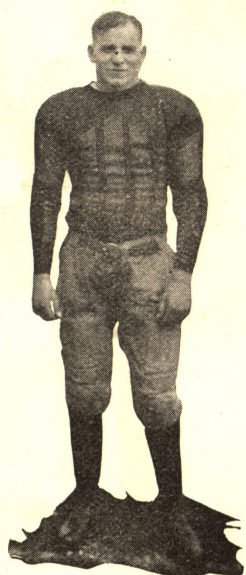
After the game for a good Thanksgiving dinner of

TURKEY
GEESE
CHICKEN

or anything at any time come to

The Puritan Restaurant
Downtown

THEIR LAST GAME FOR IOWA STATE



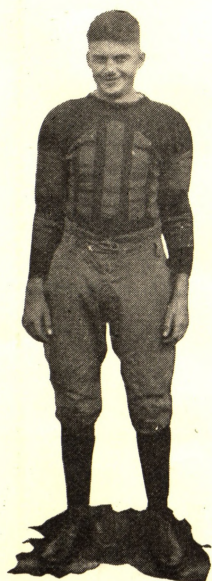
N. BEHM
Halfback.



J. BEHM
Capt.



C. HILL
Fullback.



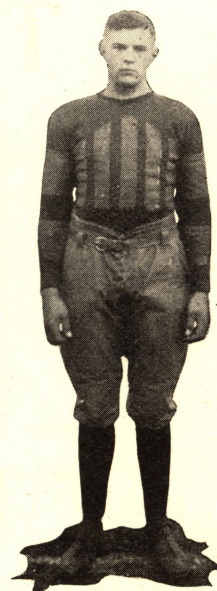
THORNBURG
Center.



BOND
End.



RASMESS
Guard.



MAYER
Tackle.

Boys, "she" will be "thankful" if you take her to hear the A-M-E-S Quartette tonight, Friday or Saturday.

FRIDAY, NOV. 27TH
EPPEL'S ORCHESTRA
BOONE, IOWA

BIG CARNIVAL DANCE FOR OUR FOOTBALL TEAM AND COACHES

VAR SITY BA

APPROVED DANC

Quality

Service

Courtesy

MALLORY'S LUNCHEONETTE

Quality Candies—We have them

Phone 1534-W

2500 Lincoln Way

AMES SQUAD

	No.	Wt.
Behm, J. Captain.....	1	135
Sielaff	5	169
Fisher	5	158
Hamilton	10	139
Ayres, J.	12	165
Ewalt, R.	15	174
Anderson, E. J.	17	164
Ayres, C.	18	160
Meyers	19	170
Hienton	21	181
Wallace	23	174
Fayram	24	180
Winget	27	194
Sulzbach	28	150
Krekow	40	173
Crawford	41	158
Crooks	42	170
Brockmeyer	46	198
Rasmess	50	190
Behm, N.	56	145
Fisher	59	198
Hill, Ed	61	144
Grimes	64	188
Woodhull	65	153
Weiss	66	135
Zellers	68	174
Thornburg	69	163
Galbraith	70	190
Mayer	72	209
Anderson, E. A.	75	194
Thomas	77	175
Kingery	78	187
Cory	80	173
Hill, C. K.	81	171
Hall	84	162
Coe	85	170

THE BATT

Ames

	L. E. Coe 85	
L. H. B. N. Behm 56	L. T. Kingery 78	
	L. G. Galbraith 70	
F. B. Cory 80	Q. B. J. Behm (Capt.) 1	C. Thornburg 69
	R. G. Thomas 77	
R. H. B. C. Hill 81		R. T. Mayer 72
		R. E. Bond 57

OFFICIALS

Referee—Grover.....	Washington
Umpire—Carrithers	Illinois
Head Linesman—Sec Taylor.....	Fairmont

CLEANING AND PRESSING

MARTIN DI

WE CALL FOR AND DELIVER

Double bill, A-M-E-S Quartette and Meighan's "Irish Luck," Princess tonight, "Ames" tomorrow and Saturday.

L ROOM

SATURDAY, NOV. 28TH
 ROWE CRACKER JACK ORCHESTRA
 DES MOINES, IOWA

SATURDAY, DEC. 5, 8 P. M. MELO-BLUE ORCHESTRA, DES MOINES

FORMATION

KANSAS AGGIE SQUAD

Kansas

R. E.
Price
49

R. T.
Pearson
33

R. G.
McGee
11

C.
Tombaugh
45

G.
Brion
47
or Reed
52

L. T.
Ballard
31

L. E.
Randel
53

Q. B.
Cochrane
15

R. H. B.
Wilson
29

L. H. B.
Holsinger
39

F. B.
Feather
44

Player	No.	Weight	Position
Hamler	2	180	Tackle
Dean	6	160	Center
Telford	10	210	Tackle
McGee (Capt.)	11	185	Guard
Limes	14	150	Quarterback
Cochrane	15	165	Quarterback
Norton	17	160	Quarterback
Meek	25	135	Halfback
Smerchek	28	150	End
Wilson	29	145	Halfback
Enns	30	160	Quarterback
Ballard	31	190	Tackle
Crews	32	150	Guard
Pearson	33	188	Tackle
Towle	34	162	Guard
Smith	35	170	Halfback
Springer	36	164	Halfback
Bramlage	38	192	Tackle
Holsinger	39	167	Halfback
Edwards	40	170	End
Douglas	42	175	Fullback
Feather	44	182	Fullback
Tombaugh	45	170	Center
Brion	47	181	Guard
Haskard	48	152	Halfback
Price	49	164	End
Reed	52	187	Guard
Randel	53	162	End
Dayhoff	54	155	Fullback
Fleck	55	170	End
Koerner	56	150	Guard
Boyd	60	145	Halfback

SCORE CARD

	First Quarter	Second Quarter	Third Quarter	Fourth Quarter	Total
IOWA STATE	7	0	0	0	7
KANSAS AGS.	0	0	6	6	12

Courtesy

Service

Quality

2500 Lincoln Way

We specialize in Toasted Sandwiches, Soups, Salads and Pastries

Phone 1534-W

MALLORY'S LUNCHEONETTE

RESS CLUB

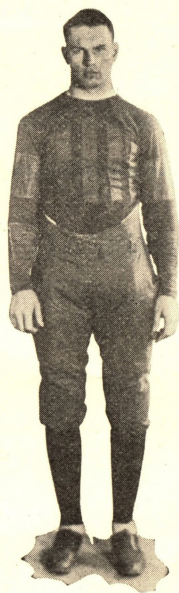
REPAIRING AND DYEING

PHONE 1362-W

A NUCLEUS FOR NEXT YEAR'S CYCLONES



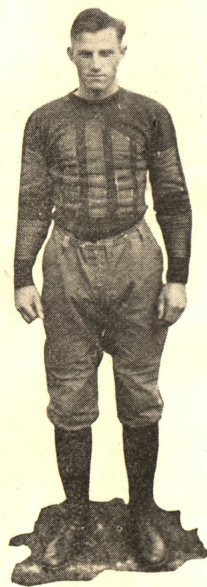
KINGERY
Tackle.



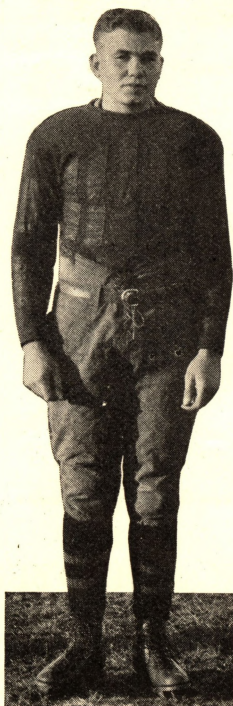
GALBRAITH
Guard.



THOMAS
Guard.



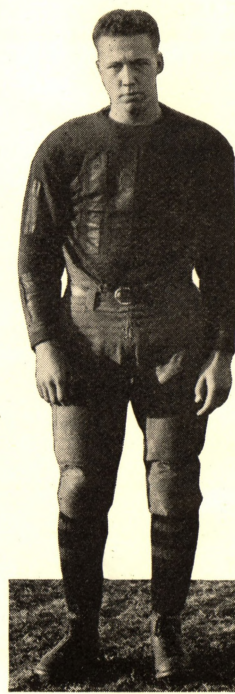
FISHER
Halfback.



CORY
Fullback.



BUD COE
End.



HALL
Halfback.

KANSAS STARS



KARL ENNS
Inman, Kansas, quarterback, Kansas
Aggies, 1925.



H. RANDELS
Anthony, Kansas, left end, Kansas
Aggies, 1925.



HARRY L. MCGEE
Ramona, Kansas, center, (Capt.)
Kansas Aggies, 1925.

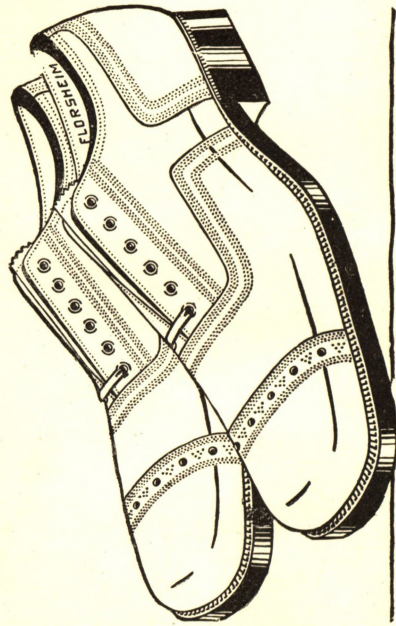
College girls, you can see the entire feature at the "Ames" Theatre before 8:25.

Allens Lunch

117 WELCH ST.

A
Safe
Place
To
Eat

TURKEY DINNER
\$1.00



FIGHT
AMES
FIGHT

TRUEBLOOD'S SHOE STORE

2544 Lincoln Way

Student Supply Store

(Next to Ames Theatre)

Reynolds & Iversen

Ames News Stand

Two stores whose ambition it is to serve well the students, faculty
and people of Ames.



The Kansas State Agricultural College Football Squad

Bottom row, left to right: H. J. Dayhoff, Abilene, f.b.; Don Meek, Idana, r.h.; W. Koerner, Wakefield, l.h.; K. Boyd, Irving, l.h.; J. Holsinger, Kansas City, l.h.; L. H. Norton, Cimarron, c.; J. Limes, Iola, q.b.; J. Anderson, Salina, q.b.; L. H. Spears, Manhattan, r.g.; K. Enns, Inman, q.b.; D. Wingfield, Junction City, f.b.

Middle row: J. C. Krysl, Lucas, r.t.; K. Whitfield, Ness City, l.g.; R. J. Haskard, Hutchinson, r.h.; R. Smith, Manhattan, l.h.; A. R. Edwards, Fort Scott, l.e.; Coach Bachman; Asst. Coach Root; Capt. H. L. McGee, Ramona, r.g.; J. Douglass, Burlington, f.b.; F. Masek, Norton, r.h.; J. F. Smerchek, Cleburne, r.e.; H. Randels, Anthony, l.e.

Top row: D. M. Telford, Manhattan, l.t.; R. E. Hamler, Mulvane, r.t.; O. Cochrane, Manhattan, q.b.; M. Reed, Norton, l.g.; Z. Pearson, Manhattan, r.t.; H. W. Thornton, Le Roy, r.e.; E. Bramlage, Junction City, l.e.; C. Dean, Danville, Ky., c.; A. Ehrlich, Marion, l.e.; J. W. Ballard, Almena, l.t.; E. E. Feather, Minneapolis, f.b.; S. J. Tombaugh, Kansas City, l.g.; E. L. Stone, Rosswell, l.t.; C. W. Brion, Manhattan, l.g.; T. A. Fleck, Wamego, r.e.; J. Price, Manhattan, r.e.; J. C. Wagner, Concordia, l.e.; Don Springer, Manhattan, l.e.

Something different all the time, Princes, "Ames" and Twin Star Theatres. Go often.

If you would enjoy a real
old fashion

Turkey Dinner

follow the crowd

to the

**Cranford Coffee
Shop**

on Lincoln Way
across from Campus

My New Location

**314 MAIN
Street**

is still headquarters

for

CLOTHING AND
ATHLETIC GOODS

as it has been for many
years

Gus Martin

Across from the Sheldon-Munn

College Book Store

On the Campus

Complete Line of Text Books

and

Student Supplies

AMES FOOTBALL RECORD

	Played	Ames Won	Tied	Ames Lost
Nebraska	19	6	1	12
Grinnell	26	17	1	8
Drake	24	18	1	5
Iowa	22	7	0	15
Minnesota	23	3	1	19
Coe	17	15	0	2
Missouri	18	10	2	6
Cornell College	16	13	0	3
Simpson	15	13	1	1
Kansas Aggies	9	5	2	2
Iowa State Teachers	7	4	2	1
Morningside	7	6	0	1
Kansas U.	7	2	1	4
Washington	6	5	0	1
South Dakota	4	4	0	0
Des Moines U.	4	4	0	0
Highland Park	2	2	0	0
Wisconsin	4	0	0	4
Penn College	2	2	0	0
Still	2	2	0	0
**Des Moines Y. M. C. A.	2	2	0	0
Northwestern	1	1	0	0
Central (Okla.)	1	0	0	1
Creighton	1	1	0	0
*Camp Dodge	1	0	0	1
Ellsworth	1	1	0	0
Rush Medical	1	1	0	0
**Fort Dodge	1	1	0	0
Nebraska Wesleyan	1	1	0	0
**Panora	1	1	0	0
**State Center	1	0	0	1
**Iowa Falls	1	1	0	0
**Butte, Montana	1	1	0	0
**Light Guards (Omaha)	1	0	0	1
Totals	250	149	12	89

*Service Team U. S. Army.

**Not a College Team.

Jewelry

DIAMONDS

If you want to see them, come in.

Fraternity and Sorority Jewelry
We have a complete line.

Anything in the way of Jewelry,
we have it.

C. W. Dudgeon

Ames' Leading Jeweler for Over
30 Years.

CARR HARDWARE CO. THE PAINT STORE

Largest line of Xmas Hardware Specialties ever shown in Ames.

Visit us at our new location, across
from Sheldon-Munn Hotel.

AMES YELLOW CAB CO. and RENT A FORD

Phone 1000 or 116

Day and Night Service

KUPPENHEIMER'S

GOOD CLOTHES

AMERICAN CLOTHES FOR AMERICANS
FINEST MONEY CAN BUY AT OUR PRICES

SUITS AND OVERCOATS

At \$35.00, \$40.00, \$45.00 and \$50.00

MALLORY HATS—EMERY SHIRTS

THE FAIR

JACOBS-VALENTINE CO.

Phone 1025 123 Kellogg Ave.

Ames Poultry & Hatchery Co.
Fresh Eggs—Milk-Fed Poultry

F. E. Mixa, Manager - Ames, Ia.

THE SHELDON-MUNN HOTEL

Will serve a

SPECIAL DINNER

on Thanksgiving for \$1.25

12:30 to 2:30 P. M., and 5:45 to
7:45 P. M.

Make your reservations with

H. G. Clarke, Mgr.

CAKES AND PASTRIES A Specialty

Eat
Mother's Bread

Melburg's Bake Shop

Phone 178

The Fort Dodge, Des Moines & Southern Railroad Urges More Co-operation

Our patrons, both passengers and shippers, are assured that this Company's service will be maintained at the highest peak of efficiency as we desire to merit your future patronage by continuing to be a dependable RAILROAD.

THE FORT DODGE LINE wants to make the business of all patrons and citizens it can serve as successful as may be, and I am sure that the public is anxious to help us in order that we, in turn, may help to obtain that result.

Two-Hour Service between AMES, FORT DODGE and DES MOINES, IOWA. Use this established service instead of your AUTOMOBILE. SAVE MONEY. TRAVEL THE SAFE WAY. Thru tickets sold to all parts of the country.

"The Fort Dodge Line"

F. M. STEELE

General Passenger Agent

Boone, Iowa

Arizona Ranchers at their best. Hoot Gibson in "Spook Ranch" Twin Star, tomorrow and Saturday.

Thanksgiving Dinner

after the game at the

College Inn Cafeteria

Just south of Central Building
on the Campus.

In the main room we will serve the following

MENU

Oyster Cocktail
Roast Young Turkey, Giblet Sauce
Roast Iowa Goose, Spiced Apple
Chestnut Dressing
Candied Yams
Snow Flake Potatoes
French Peas
Fresh Rolls Assorted Jam
Thanksgiving Sherbet
College Inn Salad
Saratoga Flakes
Hot Mince Pie
Imported Swiss Cheese
Home-Made Fruit Cake
Coffee Tea Milk

ALL FOR \$1.00

Regular Cafeteria Service in
our East Room

Open from 12:30 till 3:00

Plenty of room. Everybody welcome