

IOWA STATE UNIVERSITY

1995 Cyclone Football



Iowa State

vs.

Iowa

Saturday, September 16, 1995



Cyclone Stadium/
Jack Trice Field





Design That Works

When You Need To: **PERSUADE**

Complete Advertising Campaigns
Invitations • Posters
Flyers • Sales Brochures
Direct Mail Programs

IDENTIFY

Corporate Identity Packages
Business Graphics
Certificates • Labels

IMPRESS

Creative Marketing Ideas
Special Events
Point of Sale • Banners

INFORM

Brochures • Newsletters • Magazines
Annual Reports • Fact Sheets • Programs

ASK

Applications • Forms

sigler
Graphic
Designers

**Sigler Printing
& Publishing, Inc.**

Full Service Printing
Since 1958

413 Northwestern
Ames, Iowa 50010
515/232-6997
515/232-8820 FAX

GAME DAY 1995

IOWA STATE UNIVERSITY VS. UNIVERSITY OF IOWA
CYCLONE STADIUM-JACK TRICE FIELD, AMES, IOWA
SATURDAY, SEPT. 16, 1995

2	Today's Matchup	51	University of Iowa
4	Iowa State University	52	Future Iowa State Football Schedules
6	Iowa Pre-Game Statistics	53	Iowa State Football Support Staff
7	Iowa State Pre-Game Statistics	55	Iowa Roster
8	Athletic Administration	59	1995 Scoreboard
10	Today's Feature: Matt Straight	60	Iowa State Roster
13	Head Football Coach Dan McCarney		
14	Iowa State Assistant Football Coaches		
19	1995 Iowa State Cyclones		
25	Iowa State Spirit Squads		
26	Iowa State President Martin C. Jischke		
	Iowa State Board of Regents		
28	Scouting Report		
46	1995-96 Iowa State Basketball Schedules		
47	Cyclone Stadium Information		
49	Iowa State Athletic Department Staff		

THE OFFICIAL IOWA STATE FOOTBALL GAME PROGRAM

Co-Editors: Penny Peterson, Beth Haag
Layout/Design: Steph Green, Penny Peterson, Beth Haag
Contributors: Tom Kroeschell, Erin Davison, Jeff Shoultz
Advertising: ISU Sports Advertising, Ames
Production: Sigler Printing & Publishing, Ames
Cover Photo: Mike Haynes, ISU Photo Service

Discover the Hometown Advantage

**1st FIRST
NATIONAL
BANK AMES, IOWA**

"The Hometown banking team in Cyclone Country"

Locally owned since 1903 • Story County's largest financial institution

Downtown
Fifth and Burnett
232-5561

Campustown
2330 Lincoln Way
292-6157

North Grand
Cub Foods
233-3363

Member FDIC

TODAY'S MATCHUP

—IOWA STATE PLAYS HOST TO INTRASTATE RIVAL IOWA—

Today marks the 43rd intrastate rival football competition between the Iowa Hawkeyes and the Iowa State Cyclones. Iowa has won 30 of the 42 games in the series, but Iowa State is playing with a new attitude and new leadership this season.

Being an assistant coach for the Hawkeyes for 13 years and serving a decade under Hayden Fry, Dan McCarney is familiar with the Iowa program. The new leader for Iowa State was also a Big Ten rival of the Hawks as the former defensive coordinator at Wisconsin. However, today marks the first meeting for McCarney and Fry as both head coaches.

The first time these two teams met was in 1894 on Iowa's home turf. The Cyclones came away with a 16-8 victory and continued to win the next two consecutive games. However, Iowa State victories have since been strung out between Iowa streaks, the longest being the current 12 game winning streak for the Hawkeyes.

On September 18, 1982, the Cyclones topped the Hawkeyes at Kinnick Stadium in Iowa City, 19-7. The Iowa State defense limited Iowa to 102 yards on offense and just five first downs. Iowa broke out on top when Tony Wancket picked off Cyclone quarterback David Archer and scored from 26 yards out.

Cyclone kicker Alex Giffords soon connected on four field goals to put ISU ahead 12-7. Archer gave the Cyclones some insurance when he hooked up with Frankie Leaks on a 46-yard touchdown, then turned it over to the stingy ISU defensive corps.

Last season, the Cyclones travelled again to Iowa City to be handled by the Hawkeyes, 37-9. A Kinnick Stadium crowd of 70,397 and an ABC-TV regional audience saw Iowa turn three Iowa State turnovers in the Cyclones' first four possessions of the second half into 17 points. Iowa led

13-3 at halftime, but finished the third quarter with a comfortable 30-9 edge.

Iowa outgained Iowa State 383-233. Calvin Branch led ISU with 58 rushing yards on eight carries, while quarterback Todd Doxzon scored Iowa State's only touchdown on a 1-yard run with 7:48 left in the game.

Iowa State is coming off a 27-10 loss to Texas Christian, while Iowa is celebrating the intrastate victory over Northern Iowa last weekend.

The matchup against the Hawkeyes and the Cyclones will be a display of talent at the running back positions. Iowa is powered by junior Sedrick Shaw, who gained 102 yards on the ground against UNI. Shaw rushed for 1,002 yards as a sophomore.

Tim Dwight, the leading punt returner for the Hawkeyes this season, is averaging 32.5 yards per return. The sophomore leads Iowa with three pass receptions for 88 yards in 1995.

Tavian Banks, a sophomore from Bettendorf, Iowa, was ranked fifth in the Big Ten last season in kickoff returns with a 22.8 average on 28 returns. The running back added three returns for 56 yards last Saturday in the victory over Northern Iowa.

Leading the way for the Cyclones will be tailback Troy Davis. After breaking the Iowa State rushing record with 291 yards in the season opener, Davis added 180 yards last weekend against TCU. He is currently second in the nation in total rushing and was named Big Eight Offensive Player of the Week after the Ohio victory.

The sophomore leads the Cyclones this season with three kickoff returns for 70 yards (23.3 average) and 471 total rushing yards. Davis has contributed four of the five Iowa State touchdowns in the 1995 season, three coming in the season-opening victory over Ohio University.

When the two teams hit the field today, Iowa will be anticipating a victory to improve the winning streak to 13 games, but the Cyclones will be looking for a win to begin a streak of their own under McCarney.



Quarterback Jeff St. Clair started the first two games of the 1995 season because of an injury to starting quarterback Todd Doxzon. St. Clair has tallied 41 rushing yards and 231 passing yards.

We're pleased to support the ISU Football Program.

MAKING A LIVING

We had so many dreams. A house with a porch swing and getting the kids through college.

And making sure we could handle all of life's little surprises. Big decisions. But we were determined to make

our dreams come true. That's why we found the right people

to help us. Good people,

like the folks at The

AmerUs Group.

Together,
we can help
you get
where you
want to go.



They
know
that you

make the big decisions with
your heart.

Call us and see for
yourself, 1-800-9 AMERUS.

IS NOT
THE SAME
AS MAKING
A LIFE.

Living and working. Side by side.

AMERUSSM
Group

IOWA STATE UNIVERSITY

Since it opened in 1958, Iowa State University has been working for the state of Iowa. As Iowa's land-grant university, Iowa State has played an important role in the the educational, economic, cultural and social development of the state and the nation.

Both the Cooperative Extension Service and agricultural experiment station system trace their beginnings to Iowa State University; the nation's first public school of veterinary medicine was established at Iowa State; and the electronic digital computer was invented at Iowa State.

Today, Iowa State is a broad-based university of international stature. With nearly 25,000 students from all 50 states and nearly 120 other nations, Iowa State is helping Iowa and the nation open the doors to international exchange, trade and development.

Educating students for careers and lives in today's increasingly diverse and complex world remains Iowa State's highest priority. In recent years, Iowa State has been successful in attracting a more diverse student body and has expanded the number of opportunities for students to travel and learn in other countries.

Students at Iowa State can choose from among more than 100 programs of study leading to baccalaureate degrees in the colleges of Agriculture, Business, Design, Education, Engineering, Family and Consumer Sciences and Liberal Arts and Sciences.

The College of Veterinary Medicine offers the Doctor of Veterinary Medicine degree and graduate students can choose from among 200 fields of study leading to master's, doctor of philosophy and specialist degrees.

Students find a high quality of life when they become a part of the Iowa State University community. An award-winning lectures program, nationally recognized residence hall and Greek housing systems, a comprehensive array of student support services and more than 400 student clubs and organizations were all reasons ISU was included in a recent national study of colleges and universities with a high quality of student life.

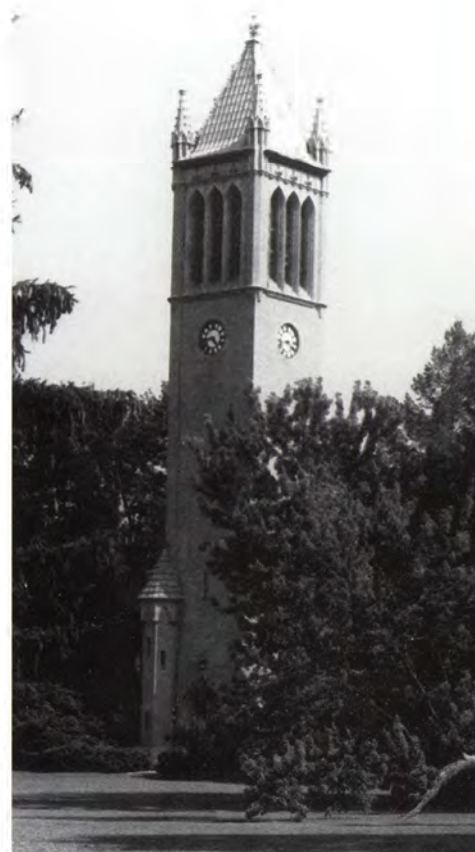
The Iowa State campus is recognized as one of the most beautiful in the nation. The park-like setting of 1800 acres has more than 180 major buildings, including some beautifully restored structures from the late-1800s and early 1900s, as well as striking examples of modern architecture.

The Iowa State Center on the south campus includes the 14,000-seat James H. Hilton Coliseum (where the men's and women's basketball, volleyball, gymnastics and wrestling teams compete), J.W. Fisher Theater, Scheman Continuing Education Building and C.Y. Stephens Auditorium, hailed as one of the nation's finest concert halls.

Athletics, both intramural and intercollegiate, play important roles in the life of Iowa State University. A member of the prestigious Big Eight Conference, Iowa State competes in 20 intercollegiate sports. In 1996-97, ISU will join the Big 12 Conference. Overall, Iowa State is consistently ranked among the top intercollegiate athletic programs in the nation, with several Cyclone teams and individuals earning high national rankings and national championships in recent years.

Iowa State is busy working for the future by playing a leading role in revitalizing and modernizing the land-grant mission of education, research and service for the 21st century. ISU is a leader in the development of distance education programs to serve education needs of people throughout Iowa, the nation and the world.

Iowa was the first state in the nation to embrace the land-grant concept in education, and Iowa State has been fulfilling that land-grant mission for Iowa for more than 124 years.



In The Campus as a Work of Art, Thomas A. Gaines rates Iowa State's campus as one of the country's top 25. The ISU campanile is one of the campus' beautiful landmarks.

AMES BOOSTERS

Tropical Fish
Salt Water Fish

Small Animals & Reptiles
Exotic Birds

**Areas Largest
Pet Center**



All Breed Pet Grooming
By Appointment

118 Hayward
Ames, IA 50014

David & Sharon Metcalf
Shop: 515-292-4646



Quality
Repair

107 Welch Avenue
Ames, Iowa 50014
(Campustown) - 292-8535

**"If we can't fix 'em,
we'll sell you
NEW ones"**

Fine leather boots, shoes
and accessories

Archie's
Shoe Repair & Sales

Rick Lippard, Owner

Mon. 7:30 a.m.-7:00 p.m. Tues.-Sat. 7:30 a.m.-5:30 p.m.

GO CYCLONES!

CYCLONE TRUCK STOP & RESTAURANT



EXIT 150 OFF HWY. 30
AMES, IOWA 50010
(515) 232-6841



TEXACO System 3 Gasoline is the gasoline of choice all
across America—and Ames. Stop in and see us!



Open 24 hours

- ☐ Walk in beer cooler
- ☐ Fresh deli
- ☐ Ticketmaster

SAVE U MORE
DISCOUNT
FOOD STORE



538 South Duff - Ames • 232-1961

Good Luck
CYCLONES



- For All Your Tailgating Needs!
- Low Prices
- Check Cub Foods Bakery, Deli,
and Seafood Department
- Walk-in Beer Cooler
- Open 24 Hours

3121 Grand Ave./Hwy. 69
Just north of
North Grand Mall
232-1226



Severson
Insurance Agency, Inc.

205 CLARK
AMES, IOWA 50010
232-7203

GO CYCLONES!

SEVDE
Transfer & Storage

Local • Long Distance • International



northAmerican®
VAN LINES / AGENT

232-6605

Outside Ames 1-800-443-6311

**IOWA STATE
UNIVERSITY**
ALUMNI
ASSOCIATION

Alumni Suite, Memorial Union
2229 Lincoln Way, Ames, IA 50014-7164
(515) 294-6525

PRE-GAME HAWKEYE STATISTICS

Iowa (1-0, 0-0 in Big Ten)

Head Coach: Hayden Fry (Baylor, 1951)

Record at Iowa: 117-69-6

Record vs. Iowa State: 13-3

1995 TEAM STATISTICS	UI	OPP
First Downs	21	13
By Rushing	13	4
By Passing	6	7
By Penalty	2	2
Rushing Yards	227	43
Average per Game	227.0	43.0
Passing Yards	230	195
Average per Game	230.0	195.0
Total Offense	457	238
Average per Game	457.0	238.0
Points	34	13
Average per Game	34.0	13.0
Fumbles-Lost	0-0	2-1
Penalty-Yards	12-146	6-60

1995 SCORING BY QUARTERS	1	2	3	4	Total
IOWA	7	21	0	6	34
OPPONENT	3	0	3	7	13

1995 INDIVIDUAL STATISTICS	Att.	Yds.	Avg.	TD	LG
Rushing					
Sedrick Shaw	20	102	5.1	1	14
Tavian Banks	14	70	5.0	0	12
Iowa Totals	47	227	4.8	3	25
Opponent Totals	45	43	1.0	0	--

Passing	Att.	Com.	Yds.	Pct.	Int.	TD
Matt Sherman	21	11	230	.524	3	1
Iowa Totals	22	11	230	.500	3	1
Opponent Totals	22	10	195	.455	1	1

Receiving	No.	Yds.	Avg.	TD	LG
Tim Dwight	3	88	29.3	1	45
Scott Slutzker	3	40	13.3	0	24
Iowa Totals	11	230	20.9	1	45
Opponent Totals	10	195	19.5	1	--

Scoring	TDs	XP-1	XP-2	FG-A	Pts.
Tim Dwight	2	0-0	0-0	0-0	12
Sedrick Shaw	1	0-0	0-0	0-0	6
Iowa Totals	5	4-5	0-0	0-0	34
Opponent Totals	1	1-1	0-0	2-3	13

Punting	No.	Yds.	Avg.	Blk.	LG
Nick Gallery	2	118	59.0	0	64
Iowa Totals	3	118	39.3	1	64
Opponent Totals	5	213	42.6	0	--

Returns	Int./Avg.	Punt/Avg.	Kick/Avg.
Tim Dwight	0/0	2/32.5	0/0
Tavian Banks	0/0	0/0	3/18.7
Plez Atkins	1/31.0	0/0	0/0
Iowa Totals	1/31.0	3/23.7	3/18.7
Opponent Totals	3/10.0	2/10.0	4/21.3

Tackles	Solo	Asst.	Total	Avg.	Loss/Yds.
Bobby Diaco	5	5	10	10.0	0/0
Chris Jackson	7	2	9	9.0	1/2
Jon LaFleur	3	4	7	7.0	0/0
Vernon Rollins	4	3	7	7.0	0/0

What do these people have in common?

Frank J. Fasano
 William A. Cirks, CLU, ChFC
 Bruce E. Breeding, J.D., CLU, ChFC
 Cliff Carey, CLU, LUTCF
 Bradley B. Sterk, CLU
 Thomas W. Cirks
 Donna M. Copeland, FLMI
 Frank A. Fasano, Jr.
 Chris Childers
 Mansour Vahid
 Jeffrey S. Foreman
 Mark L. Stoughton
 Nichole Baccam
 Jeff M. Johnson

They are some of the team players in the award-winning Iowa Agency of The New England.

Put these award winners on your financial team. You'll get a family of companies offering an array of quality products, and you'll get the services of our highly-trained agents committed to relationship-building as your Financial Partner.

For a **WINNING SEASON** of financial independence look to

NIE The New England®
 Insurance and Investment

Your Financial Partner • Your Financial Future.

2600 Westown Parkway • Suite 300
 West Des Moines, Iowa 50266
 515-225-7144

Callaway GOLF PINNACLE FootJoy SPALDING Maxfli Hogan cobra

Where Can You Find Golf's Most Famous Brand Names at Everyday Low Prices, And Still Have Knowledgeable Customer Assistance?

GOLF USA
 AMERICA'S GOLF STORE

Our staff professionals take pride in giving customers the highest level of service.

Stop by and discover why we're not just your average golf store.

GOLF USA Americas Discount Golf Store

232-GOLF

1628 So. Duff - Ames, Iowa
 (Next To George White Chevrolet)

PRE-GAME CYCLONE STATISTICS

Iowa State (1-1, 0-0 in Big Eight)

Head Coach: Dan McCartney (Iowa, 1975)

Record at Iowa State: 1-1

Record vs. Iowa: First meeting

1995 TEAM STATISTICS	ISU	OPP
First Downs	41	37
By Rushing	29	26
By Passing	12	11
By Penalty	0	0
Rushing Yards	508	488
Average per Game	254	244
Passing Yards	231	301
Average per Game	116	151
Total Offense	739	789
Average per Game	369.5	394.5
Points	46	48
Average per Game	23	24
Fumbles-Lost	1-0	11-4
Penalty-Yards	8-55	7-46

1995 SCORING BY QUARTERS	1	2	3	4	Total
IOWA STATE	6	3	6	31	46
OPPONENT	17	10	7	14	48

1995 INDIVIDUAL STATISTICS					
Rushing	Att.	Yds.	Avg.	TD	LG
Troy Davis	71	471	6.6	3	46
Graston Norris	9	28	3.1	0	8
ISU Totals	101	508	5.0	4	46
Opponent Totals	97	488	4.9	5	60

Passing	Att.	Com.	Yds.	Pct.	Int.	TD
Jeff St. Clair	47	22	231	.468	1	1
ISU Totals	47	22	231	.468	1	1
Opponent Totals	35	19	301	.543	0	0

Receiving	No.	Yds.	Avg.	TD	LG
Ed Williams	8	89	11.1	0	17
Troy Davis	5	40	8.0	1	17
ISU Totals	22	231	10.5	1	38
Opponent Totals	19	301	15.8	0	47

Scoring	TDs	XP-1	XP-2	FG-A	Pts.
Troy Davis	4	0-0	0-0	0-0	24
Jamie Kohl	0	4-4	0-0	4-6	16
ISU Totals	5	4-4	0-1	4-6	46
Opponent Totals	6	6-6	0-0	2-2	48

Punting	No.	Yds.	Avg.	Blk.	LG
Marc Harris	12	478	39.8	0	52
ISU Totals	12	478	39.8	0	52
Opponent Totals	8	300	37.5	0	43

Returns	Int./Avg.	Punt/Avg.	Kick/Avg.
Troy Davis	0/0	0/0	3/23.3
Matt Rysavy	0/0	0/0	1/5.0
Kevin Wilson	0/0	2/2.5	1/29.0
ISU Totals	0/0	2/2.5	5/20.8
Opponent Totals	1/28.0	7/5.4	6/17.8

Tackles	Solo	Asst.	Total	Avg.	Loss/Yds.
Tim Sanders	4	25	29	14.5	0/0
Matt Straight	7	16	23	11.2	3/7
Jason Putz	8	10	18	9.0	2/8
Rudy Ruffolo	3	13	16	8.0	0/0

GO CYCLONES!



Let the Hy-Vee Deli cater your next
Tailgate Party!!

- Hot or cold hors d'oeuvres
- Fried chicken
- Fresh salads
- Hot wings
- Cocktail sandwiches
- Beverages and much more!

We Deliver to Cyclone Stadium!!

Please call ahead for large groups.

Hy-Vee Food Store
3600 W. Lincoln Way Ames
292-5543

Budgetel
INNS

Ames' Finest Motel

Indoor Pool & Spa

- * King Leisure Suites Available
 - * Cable TV, HBO
 - * In-Room Coffee Maker
 - * Complimentary Room Delivered
- Continental Breakfast**

2500 Elwood Drive • Ames, IA 50010

515-296-2500 • Res. 1-800-4Budget

Conveniently located just south of Cyclone Stadium

Welcome Parents/Families



***Good Luck in the
1995 season!***

GENE SMITH

ATHLETIC DIRECTOR -- IOWA STATE UNIVERSITY



Promising to make Iowa State "one of the premier programs in the nation," Gene Smith began his tenure as Iowa State's 12th athletic director on July 1, 1993.

He is already making good on that commitment, leading the Iowa State athletic department through success and adversity. He finishes his second year of progress at ISU as the out-going president of the National Association of Collegiate Directors of Athletics. Smith is currently serving a five-year term on the NCAA Executive Council.

In the first two years, Smith has:

- Led a nearly completed \$10.6 million drive to finance construction of a new 60,000-square-foot, state-of-the-art athletic office and training facility. ISU's coaching and administrative staff is scheduled to move into its new home in July of 1996.
- Oversaw a \$900,000 project to construct new offices and meeting rooms at Hilton Coliseum for the ISU men's and women's basketball programs.
- Released his comprehensive five-year financial plan, the first such effort in department history. The plan includes the resources for a 20-sport program, including the addition of women's soccer. Incorporated into the plan are new revenue sources solicited by Smith's leadership, including corporate sponsorships, group ticket sales and fundraising initiatives.
- Created a marketing and promotions department that annually generates \$1 million in corporate commitments to Iowa State athletics, which include state-of-the-art improvements to Cyclone Stadium and addresses other athletic department needs.
- Witnessed a five percent increase in the student-athlete graduation rate that mirrors the graduation rate of the overall student body. A record 175 student-athletes earned a spot on the Big Eight academic honor roll. The department produced four academic All-Americans, a Big Eight post-graduate scholar and a Rhodes Scholar.

- Laid the foundation for a broad-based athletic program into the next century, through a \$5 million scholarship campaign as part of the ISU Foundation's \$26 million fund drive.
- Hired one of the nation's top young coaches, Tim Floyd, to direct ISU's nationally known men's basketball program. Floyd led the 1994-95 Cyclones to a school-record 23 victories in a season and a NCAA Tournament win.
- Oversaw a program that in Smith's second ISU season brought back to Ames an NCAA and Big Eight men's cross country championship, a conference men's swimming title and league runner-up finishes in men's track and baseball. The rapidly improving women's volleyball team won 24 matches and qualified for post-season play.

Prior to his arrival in Ames, Smith served as athletic director at Eastern Michigan University for seven years. Smith joined the EMU staff in 1983 as assistant athletic director for non-revenue sports. He was named interim executive athletic director in 1985 and was elevated to the position permanently on June 25, 1986.

Smith earned a bachelor's degree in business administration from the University of Notre Dame in 1977. He earned three varsity football letters as a defensive end at Notre Dame, and was a member of the 1973 Associated Press national championship team.

ATHLETIC COUNCIL

The Iowa State athletic program is governed by the Athletic Council. This year's council is chaired by Jerry Hall. The 1995-96 Athletic Council members include: Peg Armstrong-Gustafson, Norman Boyles, Richard Cruse, Paula Dail, Cynthia Dobson, Richard Engen, Donald Greiman, William Grundman, Jane Henning (ex-officio), Brenda Jones, Dan Krieger, Warren Madden (ex-officio), August Ralston, Gene Smith, Michael Whiteford, John Wolohan, Dustin Shaver, Mark Herrick, Todd Doxzon and Jen Lansink.

ATHLETIC ADMINISTRATION



NORMAN BOYLES
Faculty Representative



J. ELAINE HIEBER
Associate Athletic Director-Internal Affairs



ELVE EVERAGE
Assistant Athletic Director-Operations



STEVE McDONNELL
Director of Athletic Student Services



SCOTT BARNES
Director of Development



PETE TAYLOR
Director of Athletic External Affairs



*We're Proud To Be
Supporters of
IOWA STATE
UNIVERSITY!*

DEWITT IMPLEMENT CO.

IN OGDEN

**NEVADA FARM
EQUIPMENT CO.**

IN NEVADA

Magnum, Maxxum, Steiger, & The New 2100 Series
Axial Flow Combines



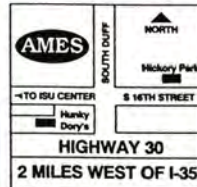
**WE ARE YOUR CENTRAL IOWA
CASE IH DEALERS**

GREAT FOOD GREAT SERVICE FUN TIMES

HICKORY PARK

RESTAURANT CO.

—an Ames Tradition for 25 Years



HOURS: Sunday-Thursday 11 a.m.-9 p.m.

Friday & Saturday 11 a.m.-10 p.m.

FAST SERVICE

121 SOUTH 16th STREET

CARRYOUT AVAILABLE

Phone: 515-232-8940 • Fax: 515-232-7275

AFTER DINNER TRY



**FREE DANCE
LESSONS**



**AMES'
LARGEST
DANCE FLOOR
233-1882**

300 South 17th Street

CATERING BANQUETS RECEPTIONS



If this is risk,



this is risk management.

A pleasant Sunday
breakfast sizzles with risk.
Risk management means
choosing between protecting
your hand, insuring your hand
or having cold cereal instead.

There is risk in everything
you own and everything you
do. Risk management
balances the realities of risk
and the costs of protection.
And with more than 125 years
of experience, nobody's better
at risk management than
La Mair-Mullock-Condon.



**L A M A I R
M U L O C K
C O N D O N**

**INSURANCE BROKERAGE
808 FIFTH AVE DES MOINES, IA 50309
5 1 5 - 2 4 4 - 0 1 6 6**

RISK IS REALITY.

TODAY'S FEATURE

—SENIOR CYCLONE CAPTAIN MATT STRAIGHT—

Iowa State's 1994 Co-Outstanding Defensive Player Matt Straight finishes his five-year Cyclone career under the new direction of Head coach Dan McCarney. Straight has enjoyed McCarney's leadership and his effort to rebuild the Iowa State program.

"He (Coach McCarney) has changed the attitude of the whole team," Straight said. "He has brought the team closer and has helped the performance level. Coach makes every player accountable for his actions."

As a senior and co-captain of the 1995 squad, Straight is looked to for leadership and guidance for the young Cyclone team members. The strong safety was an all-conference candidate in 1994 and is considered one of ISU's marquee players.

Straight took over the No. 1 spot at strong safety in 1994 fall drills when all-Big Eight performer Kevin Fulton was injured. He put forth a strong effort and finished the season as the Cyclones' second-leading tackler with 96. Straight started 10 games as a junior.

During the 1994 season, the Iowa native had 19 tackles, including eight solo stops against Kansas. He also chased down KU quarterback Asheki Preston in the Jayhawks' endzone for a safety. He made 13 stops at home against Nebraska, including seven solo efforts.

As a junior, Straight picked off a pass at Iowa, his first career interception as a Cyclone. He led the Cyclone defensive effort at Oklahoma State with 11 tackles and three stops for eight yards in losses. He also led the team with 13 tackles against Western Michigan and broke up two passes. In the competition against Rice, Straight had 11 tackles, including one for loss.

During the 1993 and 1994 seasons, Straight served as the holder for all-Big Eight kicker Ty Stewart.

Serving as a back-up strong safety in 1993, Straight tallied eight tackles in 11 game appearances. As a sophomore, he

made two tackles against Northern Illinois and Nebraska.

In his career, Straight has tallied 61 solo tackles and 127 total stops. The senior is credited with six tackles for a loss of 15 yards in his stint as a Cyclone.

After a disappointing junior season, the captain earned a celebration with a season-opening victory over Ohio University. Straight felt the support of the fans throughout the game.

"It was a great atmosphere," Straight said. "The fans showed tremendous support; they were loud. They kept cheering, even when we weren't doing so well in the first half. After the game we paid tribute to them. We showed them thanks."

In the secondary, Straight added nine total tackles in the win at home over Ohio. He made three solo stops and recovered a fumble.

In the second game of the season, at Texas Christian University, Straight tackled 14 times and was credited with three stops for seven yards lost. He made four solo tackles at TCU.

A Logan, Iowa native, Straight was named first-team all-state Class A quarterback his junior and senior prep seasons. He was selected first-team all-conference and all-Southwest Iowa three consecutive seasons and was chosen Player of the Year in Southwest Iowa by the *Council Bluffs Nonpareil*.

Straight was a member of the Cyclone squad as a redshirt freshman in 1992 and was also redshirted in 1991. He was a 1991-92 ISU Student-Athlete Scholar.

After graduation in May 1996, Straight plans to get married to his fiancée Jill Roden. They have been engaged since December.



Senior strong safety Matt Straight is one of the Big Eight's top defenders. The Logan, Iowa native was second on the squad last season with 96 total tackles.

The Largest "Exclusive" Sports Radio Network In The State of Iowa



Pete Taylor

CYCLONE RADIO NETWORK



Eric Heft

Don't miss one exciting play of ISU Football this fall! Join Pete Taylor and Eric Heft for complete game coverage starting with Cyclones Today one hour and fifteen minutes prior to kickoff through the Scoreboard Show.

Sponsors



IOWA SOYBEAN PROMOTION BOARD

NOTHING ELSE IS A PEPSI.



PIONEER
BRAND SEED CORN



FIRST STAR
BANK



AUTO PARTS



AFFILIATES

KLBA-AM 1370 Albia
KLGA-AM 1600 Algona
KASI-AM 1430 Ames
KCCQ-FM 107.1 Ames
KSOM-FM 96.5 Atlantic
KOWZ-FM 100.9 Blooming Prairie, MN
KWBG-AM 1590 Boone
KCIM-AM 1380 Carroll
KCNZ-AM 1250 Cedar Falls
WMT-FM 96.5 Cedar Rapids
KCHA-FM 95.9 Charles City
KCHE-FM 92.1 Cherokee
KJOC-AM 1170 Davenport
KDSN-FM 107.1 Denison

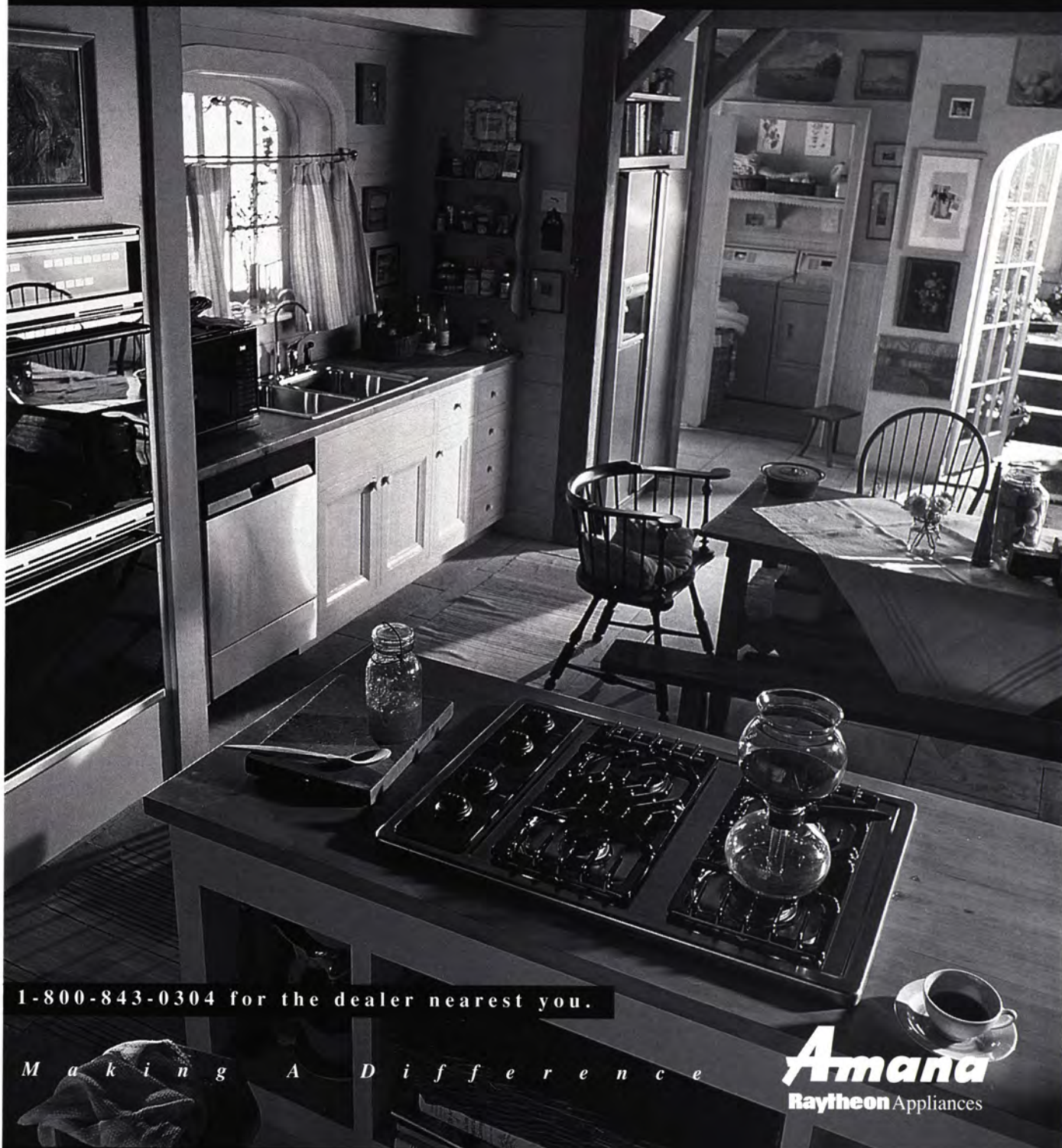
KRNT-AM 1350 Des Moines
KLIK-FM 95.9 Fairfield
KIOW-FM 107.3 Forest City
KWMT-AM 540 Ft. Dodge
KLMJ-FM 104.9 Hampton
KMAQ-AM 1320 Maquoketa
KXIA-FM 101.1 Marshalltown
KLLKK-FM 103.1 Mason City
KILJ-AM 1130 Mt. Pleasant
KOEL-AM 950 Oelwein
KTLB-FM 105.9 Rockwell City
KKSC-AM 1470 Sioux City
KICD-FM 107.7 Spencer
KQWC-FM 95.7 Webster City

Don't miss the Dan McCarney Show every Monday evening at 7:05 on your Cyclone Network station.

The Cyclone Network is a division of

CLEAR CHANNEL
SPORTS
NETWORKS

At Home in Iowa



1-800-843-0304 for the dealer nearest you.

M a k i n g A D i f f e r e n c e

Amana
Raytheon Appliances

Harris TV & Appliance
335 Lincoln Way
Ames
(515) 232-1109

Flexsteel Factory Outlet
400 S. Duff
Ames
(515) 232-6233
800-553-2816

Duffy's Appliance
822 Story
Boone
(515) 432-4166

O'Callaghan's
Clive, Merle Hay Mall
Area, N.E. Des Moines
(515) 276-3232

DAN MCCARNEY

HEAD FOOTBALL COACH -- IOWA STATE UNIVERSITY

With a contagious intensity that created new enthusiasm among Iowa State fans and players, Dan McCarney has roared with single-minded determination into his first season as head football coach at ISU.

The former defensive coordinator at Wisconsin, who played a major role in two of the most dramatic turnarounds in Big Ten Conference history, has already put together a proven staff of veteran coaches. Riding McCarney's vision of Cyclone football's bright future, that staff overcame a late start to attract an initial recruiting class of national scope that included two student-athletes who earned player of the year honors in their respective states.

"I want to build a championship football program at Iowa State," said McCarney. "I want my student-athletes, here at Iowa State, to have a burning desire to excel, not only on the field, but also in the classroom. I want them to come here and have the best five years of football in their lives. I want people to look back many years from now to have great feelings about those five years."

Anyone who has watched McCarney's rise in the coaching ranks would not be surprised by his staff's initial effort. A native of Iowa City, McCarney was instrumental in rebuilding efforts that produced Big Ten titles and Rose Bowl berths at both Iowa and Wisconsin, two schools that regularly finished near the bottom of the league before his arrival.

McCarney, 41, coached at Iowa for 13 seasons (1977-89), including a decade under Hayden Fry, before becoming the defensive coordinator at Wisconsin under Barry Alvarez in 1990.

The native Iowan was just what Iowa State President Martin Jischke and Athletic Director Gene Smith were looking for when they started their national search for the right man to lead the Cyclone football program.

"Dan McCarney is an exciting coach who has enjoyed outstanding success," Jischke said. "He is an excellent recruiter who will be extremely popular with his athletes and fans, and who is dedicated to the academic and athletic success of his student-athletes. He has helped turn around two major football programs, and he is committed to doing the same at Iowa State. I know he shares my commitment to bringing a successful, winning program to this university."

McCarney's defense was the foundation of the Wisconsin rebuilding effort. In the four seasons prior to his arrival in Wisconsin, the Badgers had a 9-36 record and attendance was at its lowest mark since World War II. The Badgers' 17 wins the past two seasons is the school's highest total since 1900 and 1901.

In 1993, Wisconsin went 10-1-1, claimed its first Big Ten title in 31 years and scored a 21-16 win over UCLA in the Rose Bowl. Wisconsin went 7-4-1 last fall with a Hall of Fame Bowl win over Duke.

"Dan McCarney has played key roles in taking two losing Big Ten programs and turning them into nationally recognized football powers," Smith said. "He is extremely well-liked by his players and his coaching peers, and he was highly recommended by everyone I talked to. In short, he is the right man for this job."

During Wisconsin's Rose Bowl season, the Badgers ranked 19th nationally against the rush allowing just 130.3 yards per game, the sixth-best mark in school history. The team allowed an average of 16.3 points per game, its best effort in 30 years. The Badger defense also intercepted an NCAA-best 23 passes and created 34 turnovers, including six against UCLA in the Rose Bowl.

A 1975 graduate of Iowa, McCarney coached the Hawkeyes in eight consecutive bowl games, including the 1982 and 1986 Rose Bowls. A three-year letterman in the offensive line for Iowa (1972-74), he was the captain of the 1974 Hawkeye squad.

McCarney has two daughters, Jillian and Melanie, and a son, Shane.



Dan McCarney has brought his enthusiasm and intensity to the Cyclone football program. The native Iowan was instrumental in turning around programs at Iowa and Wisconsin.

★★ COACHES' BOOSTERS ★★

Happy Joe's of Ames

"Because Life Is Too Short For Cheap Pizza!"

**Ames Trenching &
Excavating, Inc.**

**Anderson's
Meat & Grocery**

**Evert's Flowers,
Plants & Gifts**

The Head Shop

Durlam & Durlam Clothing

Happy Joe's of Ames

"Because Life Is Too Short For Cheap Pizza!"

★★ STORY CITY BOOSTERS ★★

**Wierson's
Furniture, Inc.**

Furniture & Floor Covering

"Since 1953"

518 Broad Street • Story City, Iowa 50248



1995 CYCLONE



Bob Carskie

Recruiting Coordinator

Hometown: Chicago, Ill.

College: Missouri Valley College, 1975

Previous Coaching Jobs:

Recruiting Coordinator, Wisconsin, 1990-92

Recruiting Coordinator, Louisville, 1993-94

Wife: Theresa, Children: Samantha (4), David (1)



Larry Coyer

Defensive Coordinator/Secondary

Hometown: Huntington, W.V.

College: Marshall, 1964

Previous Coaching Jobs:

Defensive Coordinator, Marshall, 1965-67

Defensive Backs Coach, Bowling Green, 1973

Defensive Coordinator, Iowa, 1974-77

Defensive Coordinator, Oklahoma State, 1978

Defensive Coordinator, Iowa State, 1979-83

Linebacker Coach, Michigan Panthers, 1984-85

Defensive Coordinator, Memphis Showboats, 1986

Linebackers Coach, UCLA, 1987-89

Asst. Defensive Backs Coach, Houston, 1990

Defensive Backs Coach, Ohio State, 1991-92

Defensive Coordinator, East Carolina, 1993

Defensive Line Coach, New York Jets, 1994

Wife: Linda, Sons: Matt (22), Justin (13)



Steve Loney

Offensive Coordinator/Offensive Line

Hometown: Marshalltown, Iowa

College: Iowa State, 1974

Previous Coaching Jobs:

Offensive Coordinator/Offensive Line, Missouri Western College, 1975-76

Head Coach, Leavenworth High School, 1977

Assistant Head Coach/Offensive Coordinator/

Offensive Line Coach, Morehead State, 1979-80

Head Coach, Morehead State, 1981-83

Assistant Head Coach/Offensive Line Coach/

Special Teams Coach, The Citadel, 1984-86

Assistant Head Coach/Offensive Line Coach,

Colorado State, 1989-92

Offensive Line Coach, Arizona Cardinals, 1993

Assistant Head Coach/Wide Receiver Coach,

Connecticut, 1994

Wife: Terry, Children: Matt (18), Katie (16), Kylan (13)



Matt McGettigan

Strength Coach

Hometown: Darlington, Wis.

College: Luther College, 1987

Previous Coaching Jobs:

Strength and Conditioning Coach, Wisconsin-Platteville, 1987-90

Assistant Strength and Conditioning Coach,

Notre Dame, 1990-94

Wife: Doria, Daughter: Mariah, born Jan. 25, 1995

COACHING STAFF

Phil Meyer

Tight Ends

Hometown: Milwaukee, Wis.

College: Illinois State, 1979

Previous Coaching Jobs:

Offensive Line, Illinois, 1982-84

Offensive Coordinator, SE Missouri State, 1984-88

Offensive Line, Northern Arizona, 1989

Offensive Coordinator/Assistant Head

Coach, Southern Illinois, 1989-94

Offensive Coordinator, Illinois State, 1994

Wife: Brandi



Jay Norvell

Assistant Head Coach/
Quarterbacks and Receivers

Hometown: Madison, Wis.

College: Iowa, 1985

Previous Coaching Jobs:

Receivers Coach, Northern Iowa, 1988

Wide Receiver/Special Teams Coach, Wisconsin, 1989-94



Sam Papalii

Defensive Line

Hometown: American Samoa

College: DeAnza (Calif.) Comm. College, 1980

Previous Coaching Jobs:

Running Back Coach, DeAnza CC, 1980-82

Recruiting Coordinator/Defensive Line

Assistant Coach, Hawaii, 1983-86

Running Back Coach, Arizona, 1987-89

Associate Head Coach/Defensive Line Coach, Utah, 1990-92

Wife: Candis, Children: Tai, Max



Paul Rhoads

Inside Linebackers

Hometown: Ankeny, Iowa

College: Missouri Western, 1989

Previous Coaching Jobs:

Defensive Backs Coach, Pacific, 1992-94

Wife: Vickie, Son: Jacob, born November 1994



Kirby Wilson

Running Backs

Hometown: Los Angeles, Calif.

College: Eastern Illinois, 1989

Previous Coaching Jobs:

Running Backs/Wide Receivers Coach,

L.A. Southwest Comm. College, 1989-90

Linebacker Coach/Defensive Coord., So. Illinois, 1991-92

Secondary Coach, Wyoming, 1993-94

Son: Kristopher (10)



Mike Woodley

Outside Linebackers

Hometown: Des Moines, Iowa

College: Northern Iowa, 1974

Previous Coaching Jobs:

Asst. Coach, Alamogordo (N.M.) H.S., 1976

Assistant Coach, Waterloo East H.S., 1977-78

Head Coach, Osage H.S., 1979-83

Head Coach, Fort Dodge H.S., 1984-89

Offensive Coordinator, St. Ambrose Univ., 1989-90

Head Coach, St. Ambrose University, 1991-93

Head Coach, West Des Moines Valley H.S., 1994

Wife: Betsy, Children: Brian (23), Matt (18),

Andy (16), Joe (14)



AREA ★★ CYCLONE ★★ BOOSTERS



515-999-2525

WATS 1-800-369-2525

FAX 515-999-2651

BARR-NUNN

TRANSPORTATION, INC.

2217 BROADWAY

Box 518

GRANGER, IOWA 50109

Where Quality Is Known, And Price A Pleasant Surprise.

WITHOUT
QUESTION!
Josephs

Family Owned Since 1871



Sixth at Locust 515-283-1961

Merle Hay Mall 515-276-1521

Valley West Mall 515-223-6044

Master Card • Visa • Discover Card • American Express
Josephs Charge Account

OFFICIAL ROLEX JEWELER



GOOD LUCK CYCLONES!

**B BOONE
BANK
& TRUST CO.**

716 Eighth Street—1326 South Story Street—

Hwy. 169 at Boxholm

MEMBER FDIC



The advertising support of these proud sponsors enables Cyclone Football to convey a positive message throughout television markets statewide.

**Thanks To All Of
The Sponsors Of The
Dan McCarney Show!**

**Major
Sponsor:**



Enjoy the Dan McCarney Show

KCCI - TV	Des Moines (Ch 8)	Sunday 11:00 AM & PM
COX Cable TV	Cedar Rapids (Ch 8)	Tuesday 7:30 PM
	Omaha (Ch 2)	Thursday 8:00 PM
	Quad Cities (Ch 4)	Thursday 9:30 PM
TCI Cable TV	Ames (Ch 27)	Monday 8:00 PM
	Burlington (Ch 7)	TBA
	Des Moines (Ch 12)	Monday 8:00 PM
	(Iowa Cable Network)	
	Dubuque (Ch 43)	Tuesday 7:00 PM
		Wednesday 7:30 PM
	Muscatine (Ch 5)	Friday 6:30 PM
	Waterloo (Ch 2)	TBA
SooLand Cable TV	Sioux City (Ch 39)	TBA

**"Cyclone Replay Show" on TCI Cablevision
Des Moines (Ch 12) and Ames (Ch 27) - Tuesday 8:00 PM**

Dan McCarney

FULL SPONSORS:

Ames/Story County Cyclone Club
Archway Cookies
Best Western Starlite Village Motels
Butch's Amoco
Carno
Coca-Cola
Des Moines Cyclone Club
Firststar Bank
Frontier Seeds, Inc.
George White Chevrolet
Hagie Manufacturing Co.
Huber Chevrolet
Hunziker Inc.

Iowa Commodities, Ltd.
Iowa Sports Supply
Kenworth Mid-Iowa
Kirke-Van Orsdel Insurance
Lynch Livestock
M & E Cunningham Corp.
Pioneer Hi-Bred
Rockwell International
Rueter's Red Power
Schoenauer, Musser & Co.
Stivers Lincoln-Mercury
Mel Straub Corporation
University Bookstore
Zeidlers, Inc.

SIGLER

PRINTING & PUBLISHING, INC.

"Good Impressions Since 1958"

413 Northwestern • Ames 50010

- From Quick Printing to Four-Color Heidelberg -

***"Professionals
Serving
Professionals"***

515-232-6997



★★ FORT DODGE BOOSTERS ★★

IOWA COMMODITIES LTD.



1422 Central Avenue • Fort Dodge, Iowa 50501
(515) 955-3800

**M^CCLURE
ENGINEERING
COMPANY**

CONSULTING ENGINEERS
Since 1956

*Excellence
in Service!*

705 1st Avenue North
Fort Dodge, Iowa 50501
515-576-7155

2701 S.E. Convenience Blvd.
Ankeny, Iowa 50021
515-964-1229

CORNWELL & CO. P.C.

CERTIFIED PUBLIC ACCOUNTANTS

714 14TH AVE. NORTH • FORT DODGE, IOWA 50501
"Serving Clients All Over Iowa"



CHRISTINE R. FRIDERES, CPA
PARTNER & ISU ALUMNA

PHONE: 515-955-4805
FAX: 515-955-4673



Featherlite Trailers

Locations In:
Fort Dodge
Cedar Rapids
Des Moines

1-800-240-8110

CLEMENT

CROSSROADS

Chevy-Geo-Olds • Cadillac-Toyota
EZ-Up Shelters
1-800-433-4692 • Crossroads Mall

AUTO & TRUCK

Pontiac-Buick-GMC • Jeep-Eagle-Mack
1-800-369-6225 • Hiway 20 East
FORT DODGE, IOWA

1995 IOWA STATE CYCLONES



26 Chin Achebe
Steubenville, Ohio



14 Dawan Anderson
Hazelcrest, Ill.



64 Erol Arkan
McMurray, Pa.



5 Jahi Arnold
Downey, Calif.



65 Patrick Augafa
Anchorage, Alaska



29 Jason Bales
Hinton, Iowa



17 Todd Bandhauer
Lecanto, Fla.



33 J.D. Bewley
La Mesa, Calif.



70 Chad Billings
Clear Lake, Iowa



83 Gerrick Bivins
Scott AFB, Ill.



79 Charlie Bogwill
Morris, Ill.

1996 Cyclone FOOTBALL CAMP



★ ★ ★ 1996 DATES ★ ★ ★

SPRING CLINIC DATE

March 29-30

SUMMER FOOTBALL CAMP

June 15	Kicking Camp
June 16-19	Youth Football Camp (Grades 4-8)
June 19-22	High School Football Camp (Grades 9-12)
June 23	National 7 on 7 Passing Tournament

BENEFITS

- One-on-one instruction by the coaching staff.
- Weight training tips and individual instruction.
- Availability of weight facility and workout time.
- Flexibility and agility exercises.
- All campers covered by 24-hour insurance program.
- Cyclone Football Camp T-Shirt.

**For More Information On
Cyclone Football Camp Contact
Melanie Shane or
Mike Woodley at
(515) 294-6721**

MIDWEST COACHES, INC.

AMES, IOWA

"Travel the Way the Cyclones Do"
Chartered Bus



- 22-39-47 Passenger Capacity
- Rest Rooms • Cards & Tables
- Air Conditioning • PA System
- Air-Ride Suspension

1501 East Lincoln Way
Ames
232-7270

IOWA WATS 1-800-262-2005



Savor Ames' Finest Dining Experience

A Special Night ♦ A Special Restaurant
Great Food

Specializing In: Steak DeBurgo and Prime Rib

CALL US FOR YOUR TAILGATE CATERING MEALS!

6008 W. Lincoln Way - Ames, Iowa

292-2516



Your Game Room Headquarters!

Mueller Sporting Goods is the place to find all your indoor gaming needs! Come into our showroom and see all of our bar stools, pool tables, cues and other accessories.

Accent your game room or any other room in your home with our bar stools or game chairs. Choose from wood and metal finishes, vinyl and fabric cushions in lots of patterns and colors.

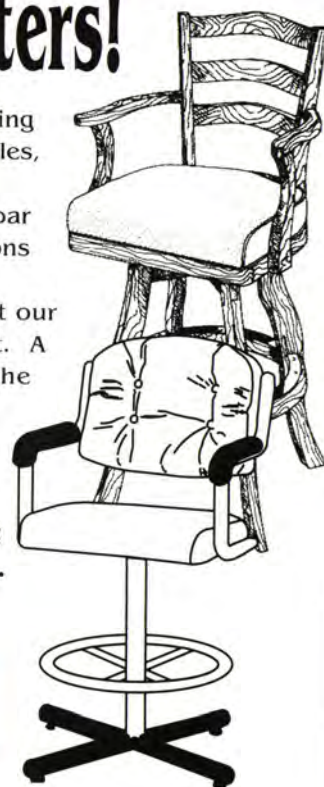
Pool tables by Olhausen are hard to beat. And so are our prices on tables! Let our knowledgeable staff help you select a table to fit your style and your budget. A full accessory package and setup in Des Moines and the surrounding area are included with every new table sold.

Come see our showroom today to get wholesale prices on all your favorite indoor game equipment and accessories!

Showroom hrs: 9-6 Mon.-Sat. & 1-5 Sun.



MUELLER
Sporting Goods
INC.



5705 Hickman Rd., Des Moines (515) 279-7000

1995 Iowa State Cyclones



8 Greg Boyd
Lincoln Park, Mich.



1 Mike Brantley
Long Island, N.Y.



48 Dave Brcka
West Des Moines, Iowa



84 Mitch Brocato
Pearl River, La.



10 Damian Brown
Aurora, Colo.



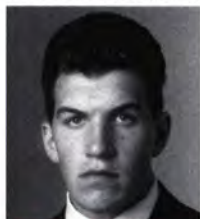
23 Jason Brown
Chicago, Ill.



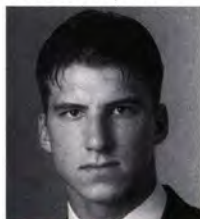
52 Chris Brunsvold
Forest City, Iowa



94 Alphonso Carter
Scarborough, Ontario



59 Chad Casavant
Freeport, Ill.



62 Joe Cominsky
Rayland, Ohio



38 Michael Cooper
Omaha, Neb.



73 Marc Cortez
Tinley Park, Ill.



28 Troy Davis
Miami, Fla.



87 Dennis DiBiase
Joliet, Ill.



18 John Dillon
Burlington, Iowa



7 Todd Doxzon
Omaha, Neb.



15 Robby Duncan
Kenner, La.



66 Doug Easley
Earlham, Iowa



36 James Elmore
Smithtown, N.Y.



78 Grant Everett
Dugald, Manitoba



98 Kevin Fleecs
Hershey, Neb.



24 Joe Foss
Ogden, Iowa



89 Damian Gibson
Marathon, Fla.



41 Cameron Gregg
Hawarden, Iowa



22 Rodney Guggenheim
Kenner, La.



99 Bryan Guill
Council Bluffs, Iowa



27 Daryl Hall
Florissant, Mo.



86 Mike Hansen
Omaha, Neb.



47 Rob Harken
Waverly, Iowa



16 Marc Harris
Omaha, Neb.



51 Bryon Heitz
Farley, Iowa



9 James Henderson
Los Angeles, Calif.



80 Jerome Henry
Los Angeles, Calif.



88 Mike Horacek
Omaha, Neb.

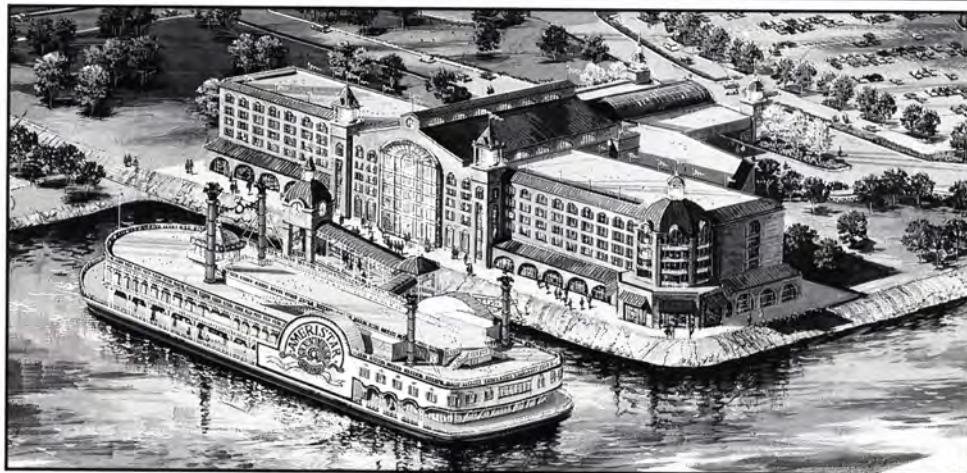


13 Kevin Hudson
Miami, Fla.



43 Hez Jackson
Tampa, Fla.

A STAR IS BORN



Take a trip down the "Main Street" of a historic river town and experience Ameristar Casino Council Bluffs, a complete destination resort lighting up the region as one of the premier entertainment attractions in the Missouri River Valley. Opening soon!



THE BRIGHTEST  ON THE RIVER

300 W. Broadway, Suite 145, Council Bluffs, Iowa 51503 (712) 328-8888

1995 IOWA STATE CYCLONES



69 Nathan Jorgenson
Johnston, Iowa



15 Zak Kimble
Urbandale, Iowa



50 Kip King
Fort Worth, Texas



19 Kemp Knighten
Hialeah, Fla.



45 Jamie Kohl
Waukesha, Wis.



77 Tim Kohn
Wadsworth, Ill.



60 Mark Konopka
Sterling Heights, Mich.



12 Corey Lambert
Marrero, La.



54 Andre Lee
Chicago, Ill.



95 Kurt Levetzow
Sabula, Iowa



20 Mike Lincavage
Chatsworth, Calif.



34 Bernard Manson
Miami, Fla.



72 Bill Marsau
Hudson, Iowa



39 Eric Martin
Cedar Rapids, Iowa



74 Jack Mitchell
Torrance, Calif.



2 Kelvin Moore
Los Angeles, Calif.



91 Sheldon Napastuk
N. Battleford, Sask.



6 Graston Norris
Houston, Texas



37 Michael O'Brien
Metairie, La.



42 Joe Parmentier
Lindenhurst, N.Y.



96 Kyle Pelecky
Bettendorf, Iowa



95 Adam Ploog
Charlotte, Iowa



34 Angelo Provenza
Aurora, Colo.



61 Jason Putz
Farley, Iowa



85 Tom Radke
Aurelia, Iowa



75 Matt Rahfaldt
Ames, Iowa



32 Preston Rhamy
Avoca, Iowa



92 Oliver Ross
Los Angeles, Calif.



63 Dale Rowley
Knoxville, Iowa



82 Dan Rowley
Knoxville, Iowa



97 Rudy Ruffolo
Kenosha, Wis.



49 Brandon Rutledge
Tama, Iowa



93 Matt Rysavy
Omaha, Neb.



56 Mike Sakalas
Warren, Mich.

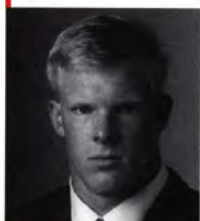


40 Tim Sanders
Chicago, Ill.



21 Rob Schneider
Solon, Iowa

1995 IOWA STATE CYCLONES



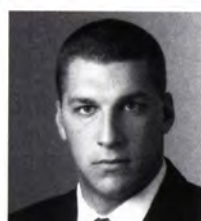
90 Greg Schoon
Sioux Rapids, Iowa



58 Aaron Schultze
Dunnell, Minn.



68 Eddie Shufford
Gary, Ind.



67 Paul Skartvedt
Radcliffe, Iowa



44 B.J. Spyksma
Grimes, Iowa



3 Jeff St. Clair
Bettendorf, Iowa



53 Corey Stevenson
Waterloo, Iowa



11 Matt Straight
Logan, Iowa



41 Clint Thomas
Rock Port, Mo.



55 Terry Thomas
Flint, Mich.



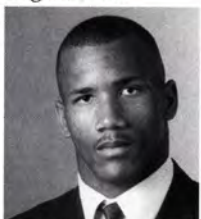
61 T.J. Tuetken
Monticello, Iowa



76 Jim Tusso
Kansas City, Mo.



59 Jason Weite
Ottumwa, Iowa



81 Ed Williams
Opa-Locka, Fla.



31 Tracy Williams
Spring, Texas



25 Kevin Wilson
North Canton, Ohio

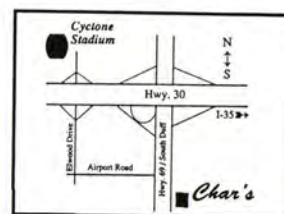


13 Josh Yates
Lake Forest, Ill.



Char's Pre-Game Favorites

- Amoco's Post-Game Gasoline
- Call ahead for Tailgating!



Char's *Amoco*



Homemade Pizza

• Sandwiches

Tenderloins • Beef Burgers

232-8888

Convenient Location
South Duff in Ames
3100 S. Duff

IOWA STATE SPIRIT SQUADS



Cheersquad

Back row, left to right:
Joe Smith, Mike Werner, Destery
Hildenbrand, Curtis Blackwell,
Jason Wymer, Keith Cardwell,
Chris Johnson

Front row, left to right:
Maria Weaver, Telicia Bunch, Sue
Froelich, Molly Richardson,
Megan Slaughter, Dena Stone,
Lendie Hart, Emily Smith

Not Pictured: Jamey Meints

Pom Squad

Back row, left to right:
Jill Carson, Shann Christie,
Angie Starmer, Heather Milner

Middle row, left to right:
Alisa Parrott, Stacy Garwood,
Diane Garwood, Frani Schwery

Front row, left to right:
Lori Paul, Sara Synder, Jada
Muhammad, Jen Wamboldt



Mascot Squad

Back row, left to right:
Marcie Vaughn, Shawn Kliebenstein,
Bill Heuer

Front row, left to right:
Kevin Dalager, Erik Carlson, Keith Hertz

DR. MARTIN C. JISCHKE

PRESIDENT -- IOWA STATE UNIVERSITY



Iowa State University enters its fifth year under the direction of Dr. Martin Jischke. Under his leadership, Iowa State is making significant

progress toward its goal of becoming the nation's premier land-grant university.

Major improvements have been made in Iowa State's undergraduate programs; research programs continue to expand, particularly in agriculture, science and technology; and Iowa State's Extension and technology transfer programs have been reorganized to be more efficient and responsive to the needs of the people of Iowa.

Under Jischke's leadership, Iowa State has set new records in several important areas, including:

- Enrollments of minority students, graduate students and high achieving students.
- External funding for research and educational programs.
- Private fundraising.
- Income from intellectual property.

Jischke, 53, came to ISU from the University of Missouri, Rolla, where he had served as chancellor for five years. He spent 17 years as a faculty member and administrator at the University of Oklahoma, serving as director of the School of Aerospace Mechanical and Nuclear Engineering, Dean of the College of Engineering, and, in 1985, interim president.

A native of Chicago, Jischke earned the B.S. in physics, with honors, in 1963 from the Illinois Institute of Technology, and M.S. in 1964 and Ph.D in 1968 in aeronautics and astronautics from the Massachusetts Institute of Technology.

He is trained as a fluid dynamicist and has expertise in heat transfer, fluid mechanics, aerodynamics and problems related to high-speed aircraft and spacecraft. He is the author or co-author of 31 archival journal publications and 21 major technical reports, and is co-editor of a book.

He has served research fellowships with NASA and the Donald W. Douglas Laboratory, and has received research grants from the National Science Foundation, the U.S. Air Force, NASA, the National Institute of Health, National Severe Storms Laboratory, and the Nuclear Regulatory Commission.

During 1975-76, he served as White House Fellow and Special Assistant to the Secretary of Transportation.

A big supporter of intercollegiate athletics, Jischke is president of the Council of Big 12 Conference Chief Executive Officers. Jischke is a board member of the National Association of State Universities and Land-Grant Colleges (NASULGC), and the board of trustees of the University Corporation for Atmospheric Research (UCAR).

In 1993, he received the Centennial Medallion from the American Society of Engineering Education. A leading presidential voice in intercollegiate athletics, he was the 1994-95 chair of the Association of Big 12 Universities.

"We have a president who communicates publicly, who communicates internally with faculty and staff that intercollegiate athletics is an important part of the mission of Iowa State University," said ISU Athletic Director Gene Smith. "Dr. Jischke has been supportive of every single move we have made. He has been a leader in the formation of the Big 12 Conference. You have to have your leader back you up and that is why it is so important to have him here."

IOWA STATE BOARD OF REGENTS



THOMAS M. COLLINS
Cedar Rapids



THOMAS C. DORR
Marcus



ELLENGRAY C. KENNEDY
Bancroft



OWEN J. NEWLIN
Des Moines



NANCY C. PELLETT
Atlantic



MARVIN POMERANTZ
Des Moines



BEVERLY A. SMITH
Waterloo



JOHN E. TYRRELL
Manchester

We're working to protect our priceless resources.



Caring for the environment is on the minds of everyone who works the land. That's because we all understand just how important it is to protect the earth, as a source of income and enjoyment.

At Cenex/Land O'Lakes Ag Services, we want to help you grow a profitable crop while protecting the environment. It's something that requires a careful balance of production inputs, experience and good management practices. We're also working with government leaders to ensure that legislation affecting farming is fair to everyone concerned.

So stop in at your local Cenex or Land O'Lakes cooperative. Let's talk about the ways we can work together to protect our priceless resources, for generations to come.



CENEX
LAND O LAKES



the Spirit Shows



SCOUTING REPORT

THE SERIES: The Hawkeyes have the edge on the Cyclones, 30-12, in the intrastate rival series. Iowa also leads 6-1 at Cyclone Stadium with the only ISU win in 1981, 23-12. The last time Iowa State defeated the Hawkeyes was Sept. 18, 1982 at Kinnick Stadium in Iowa City. Iowa broke out on top when Tony Wancket picked off Cyclone quarterback David Archer and scored from 26 yards out. But Cyclone kicker Alex Giffords booted four field goals and gave ISU the lead, 12-7. Archer gave Iowa State some insurance when he hooked up with Frankie Leaks on a 46-yard touchdown. The mighty Iowa State defense limited Iowa to 102 yards in offense and just five first downs.

OFFENSIVELY: The Hawkeyes are led in rushing by Sedrick Shaw. The running back carried 170 times for 1,002 yards in 1994 and last week against Northern Iowa, he ran for 102 yards on 20 carries. Shaw has tallied 1,665 career rushing yards and is on the way to breaking the Iowa career rushing record of 2,562 currently held by Tony Stewart. Tight end Scott Sluzker returns from 1994 after making 27 receptions for 379 yards. The senior averaged 14 yards per reception and caught a season-long 45-yard, pass. Quarterback Matt Sherman completed 42-of-59 passes for 736 yards and six touchdowns in six games as a freshman. Against Northern Iowa, Sherman completed 11-of-21 for 230 yards and one touchdown. Sophomore Running back Tavian Banks rushed for 257 yards on 35 attempts last season and averaged 22.8 yards per kickoff return, (28-638).

DEFENSIVELY: Iowa returns six starters from the 1994 season, including Bobby Diaco. The

senior linebacker ranked fifth in the Big Ten with 116 tackles (67 solo). Senior Chris Jackson has tallied 112 total career tackles, 77 solo and 35 assisted, during his four-year stint as a Hawkeye. One of the four captains of the 1995 squad, Jackson made nine tackles against UNI and had one stop for a loss. During the 1994 season, Damien Robinson tallied 58 tackles (37 solo), including two tackles for loss, six break-ups and one interception. Last week the defensive back gained four unassisted tackles to his career total.

SPECIAL TEAMS: Junior punter Nick Gallery has averaged 41.3 yards on 99 punts over two seasons, and was named to the all-Big Ten second team as a freshman. The longest punt for the Masonville, Iowa, native was a 70 yarder in 1993. Brion Hurley handles kickoff and placement duties in 1995 after proving his ability by making his last 20 attempts in 1994, (two field goals and 18 conversions). Tim Dwight led the Big Ten in punt returns in 1994 with a 12.4 average, (13-61) and ranked 13th in kickoff returns with a 19.9 average, (14-278).

THE COACH: Head Coach Hayden Fry is in his 17th year at Iowa, and his 34th year as a head coach. At Iowa, Fry has tallied three Big Ten titles, 11 bowl appearances and a 117-69-6 record, making him the school's all-time winningest coach. The Holiday Bowl Hall of Fame inductee ranks fifth among Division I active coaches with 205 career wins. Fry has three times been named Big Ten Coach of the Year and he has been named Coach of the Year, both regionally and nationally, by both the media and the American College Football Coaches Association.

Join us after the game

- Serving: Prime Rib • Steaks
• Seafood • Chicken
• Italian Cuisine • Ribs
• Sandwiches • Children's Menu

Elwell's Chef's Inn

Restaurant and Lounge
A Tradition of Fine Dining



Good Luck Cyclones!

3 1/2 miles west of
ISU Center on Lincoln Way

292-4454

Sunday Brunch 10:00 am - 2:00 pm



THE ULTIMATE IOWA STATE SPORTS INFORMATION SOURCE

- Game and event coverage of all ISU varsity sports
- Feature stories
- Recruiting information
- Big 8 news and Cyclone events
- Award-winning photographs

SUBSCRIPTION RATES:

25 issues (1 year) \$ 38.95

50 issues (2 years) \$ 69.95

First Class postage is an additional \$25 per year.
(Recommended for out-of-state subscribers)

1-800-497-9562

Cyclone Illustrated • 2771 104th Street • Suite A
Des Moines, IA 50322-3812

MasterCard and VISA accepted



★ ★ AMES NIGHT LIFE ★ ★

"An Ames Institution for 40 years"

The TIP Top Lounge

9 a.m. to 2 a.m. Daily-Featuring Tip Top CHILI
201 E. Lincoln Way

"Join us after the game"



2816 WEST ST • AMES IOWA • 292-5295

After the game...

207 Welch Ave.
Campustown



Welch Ave. Station
"A Drinking Establishment"
—Campustown's Finest—

...Come on down!

- 4 Darts
- 4 Pool Tables
- 3 Large Screen T.V.'s
- Pinball • Videos

**PROUD
SUPPORTERS
OF ISU!!**

**PEOPLE'S
BAR & GRILL**

YOUR PARTY SPOTS

IOWA'S LIVE MUSIC HEADQUARTERS

GAME DAY SPECIALS

- Open at 9:00 a.m.
- \$4.25 Pitchers
- \$1.50 Bud & Bud Light Bottles
- \$3.50 Doubles (Pints) Of:
 - Bloody Marys • Screwdrivers
 - Mimosas
- Also Serving The Best Burgers, Chicken, Chili, Soups, Salads, Appetizers & Sandwiches In Town!!

Located At The Corner of Welch Ave. & Lincoln Way
In Campustown - 292-4501

YOUR COMPLETE TAILGATE HEADQUARTERS

- Liquor, Wines, Micros, Imports, Cases, Long Necks, Kegs, Ice,
- All of Our Beer Is Ice Cold In Our 1,000 sq. ft. Walk-In Cooler.
- We Carry All Sizes & Brands of Alcohol (Minis, Pints, Quarts, Liters, Texas Fifts)
- Party Supplies - Botas, Flasks, Cups, Taps, Tubs, CO₂ Cold Plates, Keg Mobiles
- Wholesale Liquor & Delivery Available

Located At 218 Welch Ave. (Behind Blimpies)
In Campustown - 292-5500



Catch Our **FREE SHUTTLE** To The Stadium

1. Come Tailgate At People's Before The Game
2. Ask Your Server For A Shuttle Pass (It runs every 10 min.)
3. Jump On The Shuttle For Door To Door Service
4. Cheer The Cyclones On To Victory!





ALWAYS A PART OF THE GAME PLAN.

©1995 The Coca-Cola Company. "Coca-Cola," the Dynamic Ribbon device and the Contour Bottle design are registered trademarks of The Coca-Cola Company.



When Iowa State Has The Ball . . .

IOWA STATE OFFENSE

88	Mike Horacek	SE
77	Tim Kohn	LT
60	Mark Konopka	LG
67	Paul Skartvedt	C
65	Patrick Augafa	RG
51	Byron Heltz	RT
81	Ed Williams	QB
7	Todd Dowzon	TB
28	Troy Davis	FB
22	Rodney Guggenheim	TE
87	Dennis DiBaise	

IOWA DEFENSE

48	Eric Hilgenberg	LE
94	Jared DeVries	LT
66	Lloyd Bickham	NG
55	Jon LaFleur	RT
9	Bill Ennis-Inge	RE
45	Bobby Diaco	LB
56	Vernon Rollins	LB
30	Billy Coats	LCB
27	Chris Jackson	SS
3	Damien Robinson	FS
23	Piez Atkins	RC

IOWA STATE CYCLONES

1	Adrian Bland	WR	16	Mong-Ho	P	31	Angelo Provenza	LB	50	Kenneth King	LB	88	Eric Hilgenberg	LE
2	Kenneth Moore	QB	17	Todd Bortolucci	QB	32	James Elnore	LB	51	Byron Heltz	RT	89	Eric Hilgenberg	LE
3	Jeff St. Clair	QB	18	James Oliver	QB	33	Michael O'Brien	QB	52	Chris Burrows	QB	90	Eric Hilgenberg	LE
4	James Elnore	QB	19	James Oliver	QB	34	Michael O'Brien	QB	53	Chris Burrows	QB	91	Eric Hilgenberg	LE
5	James Elnore	QB	20	Mike Lusk	QB	35	Chris Burrows	QB	54	Chris Burrows	QB	92	Eric Hilgenberg	LE
6	James Elnore	QB	21	Mike Lusk	QB	36	Chris Burrows	QB	55	Chris Burrows	QB	93	Eric Hilgenberg	LE
7	Todd Dowzon	QB	22	Mike Lusk	QB	37	Chris Burrows	QB	56	Chris Burrows	QB	94	Eric Hilgenberg	LE
8	Greg Boyd	QB	23	Mike Lusk	QB	38	Chris Burrows	QB	57	Chris Burrows	QB	95	Eric Hilgenberg	LE
9	James Henderson	QB	24	Mike Lusk	QB	39	Chris Burrows	QB	58	Chris Burrows	QB	96	Eric Hilgenberg	LE
10	James Henderson	QB	25	Mike Lusk	QB	40	Chris Burrows	QB	59	Chris Burrows	QB	97	Eric Hilgenberg	LE
11	Mike Stogdole	QB	26	Mike Lusk	QB	41	Chris Burrows	QB	60	Chris Burrows	QB	98	Eric Hilgenberg	LE
12	Mike Stogdole	QB	27	Mike Lusk	QB	42	Chris Burrows	QB	61	Chris Burrows	QB	99	Eric Hilgenberg	LE
13	Mike Stogdole	QB	28	Mike Lusk	QB	43	Chris Burrows	QB	62	Chris Burrows	QB	100	Eric Hilgenberg	LE
14	Mike Stogdole	QB	29	Mike Lusk	QB	44	Chris Burrows	QB	63	Chris Burrows	QB			
15	Mike Stogdole	QB	30	Mike Lusk	QB	45	Chris Burrows	QB	64	Chris Burrows	QB			
16	Mike Stogdole	QB	31	Mike Lusk	QB	46	Chris Burrows	QB	65	Chris Burrows	QB			
17	Mike Stogdole	QB	32	Mike Lusk	QB	47	Chris Burrows	QB	66	Chris Burrows	QB			
18	Mike Stogdole	QB	33	Mike Lusk	QB	48	Chris Burrows	QB	67	Chris Burrows	QB			
19	Mike Stogdole	QB	34	Mike Lusk	QB	49	Chris Burrows	QB	68	Chris Burrows	QB			
20	Mike Stogdole	QB	35	Mike Lusk	QB	50	Chris Burrows	QB	69	Chris Burrows	QB			
21	Mike Stogdole	QB	36	Mike Lusk	QB	51	Chris Burrows	QB	70	Chris Burrows	QB			
22	Mike Stogdole	QB	37	Mike Lusk	QB	52	Chris Burrows	QB	71	Chris Burrows	QB			
23	Mike Stogdole	QB	38	Mike Lusk	QB	53	Chris Burrows	QB	72	Chris Burrows	QB			
24	Mike Stogdole	QB	39	Mike Lusk	QB	54	Chris Burrows	QB	73	Chris Burrows	QB			
25	Mike Stogdole	QB	40	Mike Lusk	QB	55	Chris Burrows	QB	74	Chris Burrows	QB			
26	Mike Stogdole	QB	41	Mike Lusk	QB	56	Chris Burrows	QB	75	Chris Burrows	QB			
27	Mike Stogdole	QB	42	Mike Lusk	QB	57	Chris Burrows	QB	76	Chris Burrows	QB			
28	Mike Stogdole	QB	43	Mike Lusk	QB	58	Chris Burrows	QB	77	Chris Burrows	QB			
29	Mike Stogdole	QB	44	Mike Lusk	QB	59	Chris Burrows	QB	78	Chris Burrows	QB			
30	Mike Stogdole	QB	45	Mike Lusk	QB	60	Chris Burrows	QB	79	Chris Burrows	QB			
31	Mike Stogdole	QB	46	Mike Lusk	QB	61	Chris Burrows	QB	80	Chris Burrows	QB			
32	Mike Stogdole	QB	47	Mike Lusk	QB	62	Chris Burrows	QB	81	Chris Burrows	QB			
33	Mike Stogdole	QB	48	Mike Lusk	QB	63	Chris Burrows	QB	82	Chris Burrows	QB			
34	Mike Stogdole	QB	49	Mike Lusk	QB	64	Chris Burrows	QB	83	Chris Burrows	QB			
35	Mike Stogdole	QB	50	Mike Lusk	QB	65	Chris Burrows	QB	84	Chris Burrows	QB			
36	Mike Stogdole	QB	51	Mike Lusk	QB	66	Chris Burrows	QB	85	Chris Burrows	QB			
37	Mike Stogdole	QB	52	Mike Lusk	QB	67	Chris Burrows	QB	86	Chris Burrows	QB			
38	Mike Stogdole	QB	53	Mike Lusk	QB	68	Chris Burrows	QB	87	Chris Burrows	QB			
39	Mike Stogdole	QB	54	Mike Lusk	QB	69	Chris Burrows	QB	88	Chris Burrows	QB			
40	Mike Stogdole	QB	55	Mike Lusk	QB	70	Chris Burrows	QB	89	Chris Burrows	QB			
41	Mike Stogdole	QB	56	Mike Lusk	QB	71	Chris Burrows	QB	90	Chris Burrows	QB			
42	Mike Stogdole	QB	57	Mike Lusk	QB	72	Chris Burrows	QB	91	Chris Burrows	QB			
43	Mike Stogdole	QB	58	Mike Lusk	QB	73	Chris Burrows	QB	92	Chris Burrows	QB			
44	Mike Stogdole	QB	59	Mike Lusk	QB	74	Chris Burrows	QB	93	Chris Burrows	QB			
45	Mike Stogdole	QB	60	Mike Lusk	QB	75	Chris Burrows	QB	94	Chris Burrows	QB			
46	Mike Stogdole	QB	61	Mike Lusk	QB	76	Chris Burrows	QB	95	Chris Burrows	QB			
47	Mike Stogdole	QB	62	Mike Lusk	QB	77	Chris Burrows	QB	96	Chris Burrows	QB			
48	Mike Stogdole	QB	63	Mike Lusk	QB	78	Chris Burrows	QB	97	Chris Burrows	QB			
49	Mike Stogdole	QB	64	Mike Lusk	QB	79	Chris Burrows	QB	98	Chris Burrows	QB			
50	Mike Stogdole	QB	65	Mike Lusk	QB	80	Chris Burrows	QB	99	Chris Burrows	QB			
51	Mike Stogdole	QB	66	Mike Lusk	QB	81	Chris Burrows	QB	100	Chris Burrows	QB			

When Iowa Has The Ball . . .

IOWA OFFENSE

10	Demoseneeds Odems, III	SE
73	Ross Verba	LT
69	Matt Purdy	LG
70	Casey Wiegmann	C
79	Mike Goff	RG
57	Aaron Kooliker	RT
84	Scott Slutzker	TE
12	Matt Sherman	QB
6	Tim Dwight	WB
5	Sedrick Shaw	RB
34	Rodney Filer	FB

IOWA STATE DEFENSE

34	Angelo Provenza	OLB
44	B. J. Spkysma	OLB
61	Jason Putz	DT
60	Greg Schoon	NG
97	Rudy Ruffolo	DE
40	Tim Sanders	ILB
38	Michael Cooper	ILB
13	Dawan Anderson	RCB
14	Dawan Anderson	LCB
11	Matt Straight	SS
2	Kelvin Moore	FS

IOWA HAWKEYES

1	Mike Goff	WR	14	Greg Hahn	QB	29	Mike Goff	WR	44	Mike Goff	WR	59	Mike Goff	WR
2	Mike Goff	WR	15	Greg Hahn	QB	30	Mike Goff	WR	45	Mike Goff	WR	60	Mike Goff	WR
3	Mike Goff	WR	16	Greg Hahn	QB	31	Mike Goff	WR	46	Mike Goff	WR	61	Mike Goff	WR
4	Mike Goff	WR	17	Greg Hahn	QB	32	Mike Goff	WR	47	Mike Goff	WR	62	Mike Goff	WR
5	Mike Goff	WR	18	Greg Hahn	QB	33	Mike Goff	WR	48	Mike Goff	WR	63	Mike Goff	WR
6	Mike Goff	WR	19	Greg Hahn	QB	34	Mike Goff	WR	49	Mike Goff	WR	64	Mike Goff	WR
7	Mike Goff	WR	20	Greg Hahn	QB	35	Mike Goff	WR	50	Mike Goff	WR	65	Mike Goff	WR
8	Mike Goff	WR	21	Greg Hahn	QB	36	Mike Goff	WR	51	Mike Goff	WR	66	Mike Goff	WR
9	Mike Goff	WR	22	Greg Hahn	QB	37	Mike Goff	WR	52	Mike Goff	WR	67	Mike Goff	WR
10	Mike Goff	WR	23	Greg Hahn	QB	38	Mike Goff	WR	53	Mike Goff	WR	68	Mike Goff	WR
11	Mike Goff	WR	24	Greg Hahn	QB	39	Mike Goff	WR	54	Mike Goff	WR	69	Mike Goff	WR
12	Mike Goff	WR	25	Greg Hahn	QB	40	Mike Goff	WR	55	Mike Goff	WR	70	Mike Goff	WR
13	Mike Goff	WR	26	Greg Hahn	QB	41	Mike Goff	WR	56	Mike Goff	WR	71	Mike Goff	WR
14	Mike Goff	WR	27	Greg Hahn	QB	42	Mike Goff	WR	57	Mike Goff	WR	72	Mike Goff	WR
15	Mike Goff	WR	28	Greg Hahn	QB	43	Mike Goff	WR	58	Mike Goff	WR	73	Mike Goff	WR
16	Mike Goff	WR	29	Greg Hahn	QB	44	Mike Goff	WR	59	Mike Goff	WR	74	Mike Goff	WR
17	Mike Goff	WR	30	Greg Hahn	QB	45	Mike Goff	WR	60	Mike Goff	WR	75	Mike Goff	WR
18	Mike Goff	WR	31	Greg Hahn	QB	46	Mike Goff	WR	61	Mike Goff	WR	76	Mike Goff	WR
19	Mike Goff	WR	32	Greg Hahn	QB	47	Mike Goff	WR	62	Mike Goff	WR	77	Mike Goff	WR
20	Mike Goff	WR	33	Greg Hahn	QB	48	Mike Goff	WR	63	Mike Goff	WR	78	Mike Goff	WR
21	Mike Goff	WR	34	Greg Hahn	QB	49	Mike Goff	WR	64	Mike Goff	WR	79	Mike Goff	WR
22	Mike Goff	WR	35	Greg Hahn	QB	50	Mike Goff	WR	65	Mike Goff	WR	80	Mike Goff	WR
23	Mike Goff	WR	36	Greg Hahn	QB	51	Mike Goff	WR	66	Mike Goff	WR	81	Mike Goff	WR
24	Mike Goff	WR	37	Greg Hahn	QB	52	Mike Goff	WR	67	Mike Goff	WR	82	Mike Goff	WR
25	Mike Goff	WR	38	Greg Hahn	QB	53	Mike Goff	WR	68	Mike Goff	WR	83	Mike Goff	WR
26	Mike Goff	WR	39	Greg Hahn	QB	54	Mike Goff	WR	69	Mike Goff	WR	84	Mike Goff	WR
27	Mike Goff	WR	40	Greg Hahn	QB	55	Mike Goff	WR	70	Mike Goff	WR	85	Mike Goff	WR
28	Mike Goff	WR	41	Greg Hahn	QB	56	Mike Goff	WR	71	Mike Goff	WR	86	Mike Goff	WR
29	Mike Goff	WR	42	Greg Hahn	QB	57	Mike Goff	WR	72	Mike Goff	WR	87	Mike Goff	WR
30	Mike Goff	WR	43	Greg Hahn	QB	58	Mike Goff	WR	73	Mike Goff	WR	88	Mike Goff	WR
31	Mike Goff	WR	44	Greg Hahn	QB	59	Mike Goff	WR	74	Mike Goff	WR	89	Mike Goff	WR
32	Mike Goff	WR	45	Greg Hahn	QB	60	Mike Goff	WR	75	Mike Goff	WR	90	Mike Goff	WR
33	Mike Goff	WR	46	Greg Hahn	QB	61	Mike Goff	WR	76	Mike Goff	WR	91	Mike Goff	WR
34	Mike Goff	WR	47	Greg Hahn	QB	62	Mike Goff	WR	77	Mike Goff	WR	92	Mike Goff	WR
35	Mike Goff	WR	48	Greg Hahn	QB	63	Mike Goff	WR	78	Mike Goff	WR	93	Mike Goff	WR
36	Mike Goff	WR	49	Greg Hahn	QB	64	Mike Goff	WR	79	Mike Goff	WR	94	Mike Goff	WR
37	Mike Goff	WR	50	Greg Hahn	QB	65	Mike Goff	WR	80	Mike Goff	WR	95	Mike Goff	WR
38	Mike Goff	WR	51	Greg Hahn	QB	66	Mike Goff	WR	81	Mike Goff	WR	96	Mike Goff	WR
39	Mike Goff	WR	52	Greg Hahn	QB	67	Mike Goff	WR	82	Mike Goff	WR	97	Mike Goff	WR
40	Mike Goff	WR	53	Greg Hahn	QB	68	Mike Goff	WR	83	Mike Goff	WR	98	Mike Goff	WR
41	Mike Goff	WR	54	Greg Hahn	QB	69	Mike Goff	WR	84	Mike Goff	WR	99	Mike Goff	WR
42	Mike Goff	WR	55	Greg Hahn	QB	70	Mike Goff	WR	85	Mike Goff	WR	100	Mike Goff	WR

COCA-COLA BOTTLING CO.,
106 ALEXANDER AVE., AMES, IA 50010

THE CYCLONES PLAY ON KXIA

Now heard in Ames, Des Moines, Cedar Rapids, Waterloo
and throughout Central Iowa on a NEW TALL TOWER
and 100,000 WATTS!!

IOWA'S BEST COUNTRY



Mother Ocean



Sundance Spas



MARSHALLTOWN CYCLONE BOOSTERS

A.G. Edwards
INVESTMENTS SINCE 1887

14 E. Southridge Road
Marshalltown, Iowa 50158

Bill Edens • Jay Merryman
• Jim Dworzak • Deb Oetker
• Roger Kaput

MEMBER SIPC

Ph. 515-752-5401

SCOTT SNYDER, R.Ph.
MANAGER



MEDICAP
PHARMACY®

11 North Third Avenue
Marshalltown, IA 50158
(515) 752-7139

BONANZA.

Steak • Chicken • Seafood • Salad

Todd Benson
Manager

2902 S. Center
Marshalltown, IA 50158 (515) 752-3686



Telephone (515) 752-2313
1-800-747-0014

APPLIANCE DOCTOR
REPAIRS & SALES
MAJOR HOME APPLIANCES

L.E. Malone
Owner

206 S. 8th Avenue
Marshalltown, Iowa 50158



LE ROY MORFORD CONSTRUCTION

"The Concrete King"
753-6418



753-6736

JEANNE

209 E. Main • Marshalltown



Marshalltown's
Hottest Nightspot!!

22 North 1st Avenue
Marshalltown, Iowa 50158

Bring In
Your Game
Ticket Stub
For A
FREE DRINK
After The Game!

Taylor's



106 South 3rd Avenue
Marshalltown, Iowa 50158
753-9684



**ELECTRONIC
BUSINESS
SYSTEMS**

Home of the
4 Year Warranty

Ph. 1-800-397-2580

9 Westwood Drive
(Just West of Center Street - Across from KFC)
Marshalltown, Iowa



National CYCLONE CLUB

RECENT CONTRIBUTORS

VICTORY CLUB

Loren & Betty Larson

CAPTAINS CLUB

Mrs. Wendell Allan
Robert & Marcia Anderson
David Bear, Inc.
Bunce Broadcasting Company
Cooper Mfg. Co.
John Alexander Grant
Stan & Mary Harlan
David & Debbie Hurst
Douglas & Betsy Koontz
Kirkpatrick Pettis
Warren & Velma Sargent
Signs of Distinction
Emmett Stevermer
C. Cooper Taylor

GOLD PLUS CLUB

Cyclone Enterprises Incorporated
Mark Davidson
Roger Wayne Gotschall
Donald & Patricia Holder
Verle Joe Hunt
R. W. Larson
Cliff & Lavon Lewellyn
Jack Nordyke
Wayne O. & Eleanor Ostendorf
Art & Ellen Riese
Brad & Janine Shaull
Robert Howard Treloar
Russell H. Watt

GOLD CLUB

Barton Solvents Inc.
Kenneth Fredrehsen
Joni Houck
John Ingram
Lawrence S. Larson
John J. & Pam Miller
Sidney & Diana Pounds
Patricia Shafer

CARDINAL CLUB

Greg Dillavou
Rich & Alice Fellingham
David P. & Miriam Koenigs
Lynn Kruse
Thomas Edwin Mack
Harold Mindermann
G. A. Robinson Farms
Michael Roy Simonson

STATE'S 250 CLUB

Dean & Linda Boettcher
Dennis C. & Rita Carlson
Dechant-Middendorf Ins.
James B. Dressen
Earl & Stephanie Fox, Jr.
LeRoy Raymond Gallentine
Robert & Olive Gauley
Ronald Dean Hersom
Hazel Houge
Joanne & Jack Jenkins
Steven L. Johanson
Betty A. Keenan
Dean Matthew King

Bill Monroe
Tim Loudon
Dean Luhman
Ogden Newspapers Inc.
Russell Rains
Forrest & Sheryl Tegtmeier
Whitaker Construction
Wittern Group
Mark Zenor

CENTURY CLUB

Ed Ackerman
William T. Bell
Chet R. Chickering
Wayne Arnold Danker
Allan Walter Fuhr
John E. Goeders
Chris Michael Gilroy
Jim & Linda Hindt
KM Farms
Richard Lang
Glen & Dorothea Lowman
Ed & Janet Mead
Tom & Suzanne Mead
Moberg Real Estate
Gary & Sandy Nyhus
Teresa Pals
Dean Peterson
Jodean Ann Sprock
Ralph Tomlinson
Christopher Wilson



NATIONAL CYCLONE CLUB

ANNUAL GIVING

We honor, with pride, our 4,000 plus Alumni and Friends who promote the success of the Iowa State men's and women's 20 sport Athletic Program by their generous annual giving. The Cyclone Club is

the fund-raising organization for the Department of Intercollegiate Athletics, and is part of the ISU Foundation, the annual giving fund for the university.

Annual financial support by alumni and friends provides the funds necessary to help defray the costs of scholarships, academic assistance, medical and training facilities, and other essential aspects of a broad-based intercollegiate program.

When you make your investment in ISU's continuing athletic success, you become a member of the team in more than spirit. Your support becomes the lifeblood of the Cyclone athletic program.

Our effort in working to develop national championship teams is our thanks for your support. We strive to put together a program of which our athletes, coaches, alumni and friends can be genuinely proud.

DIRECTORS CLUB

\$10,000

Ames Story County Cyclone Club
Steve Bergstrom
Creative Sports
Mrs. Ray Engel
Greater Des Moines Cyclone Club
Jordan Louis Larson Jr.
Midwest Aircraft
Printer, Inc.

R & R Investors Ltd.
Ruan Companies
Sigler Printing
James A. Smith
A. B. & Sara Sorensen
Charles Richard Stark Jr.
Universal Outdoor Advertising Inc.
WOI-TV

VICTORY CLUB

\$5,000

Ralph Aulmann Memorial
R C. Bauerle
Benson Motor, Inc.
Bituminous Material & Supply LP
C. A. Bluedorn
Helen Burroughs
Cedar Valley Cyclone Club
William J. Claybaugh
Clear Channel Communications
Dasher Management
Economy Forms Corporation
O. Robert & Barbara Eddy
Firstar Bank Des Moines NA
Jon L. Fleming
Roger & Sandra Gade
Jim & Kay Galloway

Dick & Betty Grant
Jerry & Nancy Hall
Holub Greenhouses
Robert Horner
IES Industries Inc.
Jacobson Warehouse Co. Inc.
Donald & Linda Jayne
Jon & Marcia Kinzenbau
Kirke-Van Orsdel Inc.
Lynch Livestock Inc.
Menlo Elevator Co.
Norwalk Cumming State Bank
Norwest Bank
Pritchard Auto Company
Joseph Lee Pugel
Rockwell International Corp.

Don & Rosemary Schrack Sr.
Dan & Marilyn Settle
Reyold S. Smith Marketing
Dennis L. Snyder
State Line Cyclone Club
Stivers Lincoln Mercury
Story Construction Co.
R. S. Stover Company
Gary Thompson Oil Co.
James & Kay Trager
Van-Wall Equipment Inc.
Donald Wandling
West Des Moines Sand Co.
Howard Wilkinson
Ziegler

CAPTAINS Club

★★★★★★★★★★★★★★★★★★★★★★★★★★ \$2,500

AMPC

Dee-Jay Petroleum Inc.
Glenn Destigter
Devries Communications
Dist 19-Quad Cities Cyclone Club
Dick & Ginny Dobbs
Robert & Donna Doran
Dow Elanco
Richard R. Drake
Ken & Mary Dubas
E. M. Duesenberg Inc.
Edwards Contracting Inc.
Paul & Jan Ehrig
Dick Ehrlich
Electronic Engineering Company
Robert G. Elmitt
Todd & Dawn Emery
Ernst & Young
William Fedeler
Feed Specialties Co.
First National Bank of Ames
Gerald & Patricia Foster
Mike & Dee Fowler
David & Marilla Fox
Ronald B. & Marla J. Franklin
Freeze-Notis Weather
Dennis & Barbara Gano
John & Bette Garfield
Gateway Insurance
Lynn D. Gaulke
Donald Harlan Geiger
Jerry & Tami Gerlach
John Thomas Gilbert
Archie Gillespie
Robert & Deborah Gitchell
Larry & Yvonne Goecke
Gomaco
Gookin Ford
Sharon Granzow
Green Products Company
Dr. Tom & Allison Greenwald
Griffith Ford-Mercury Inc.
Bob & Lori Grote
Gregg Gustafson
H & F Distributing Co. Inc.
Tim Halvorsen
Homer & Marilyn Hansen
Craig & Judy Hansen
Haps Air Service
Charles N. Hegggen MD
Edward & Mary Hendrickson
Dave & Ann Henricks
Daryl & Karyl Henze
Hill Seed Company
H. L. Hoak
Hoffman Seed Farms Inc.
Holmes Oldsmobile Co. Inc.
Homeland Bank
Honda of Ames
Hummel Nissan
Dean E. Hunziker
Erben A Hunziker
Arlo & Alice Huse
Hy-Vee
Jason Hyland

Ihle Implement Inc.
 Industrial Hearing Conservation Service
 Iowa Benefits
 Iowa Veterinary Supply
 Harold D. Isley
 Fred William Jahr
 Fletcher Frank Jennings
 Jensen Construction Company
 Jeff Jeske
 Richard Johansen
 Thomas A. Johnson
 Jerry Jones
 Donald H. Jordahl
 Odean Jukam
 Frederick Arnold Kammeier
 KCCI - TV
 Kennedy & Co.
 Kenyon Construction
 Dr. Jeffrey & Jodi King
 Michael & Mary Kitchell
 Knapp-Tedesco Insurance Agency Inc.
 Dan & Sharon Krieger
 Mark Kuchel
 David & Sandy Kuenzi
 Doug & Penni Kumm
 Bruce Lambert
 William F. Landholt
 David & Tina Larson
 Loren & Betty Larson
 Jack & Kathleen Lashier
 Latham Seed Co.
 Dean & Sue Longnecker
 Manatts Inc.
 Mike Manning Chevrolet
 Marshall Co. Cyclone Club
 Ruth & Randy Matson
 McClure Engineering Co.
 Michael Mc Nichols
 Richard & Deborah McConnell
 Bruce Welcher McKee
 McLaughlin Chevrolet
 Carl William Mersereau
 Don & Sandi Meyer
 Richard Dean & Donna Meyocks
 Raymond A. Michel
 Midcrest Cyclone Club
 Midway Oil Co-Jiffy Stores
 Midwest Power
 Loren E. Milligan
 Miracle Equipment Co.
 Modern Builders Inc.
 Moffitts Ford
 Scott Moore
 John R. Mortimer
 Steve Mott
 Carlton & Ruth Ann Mueller
 H. L. Munn Lumber Co.
 Naden Industries
 Ashok Nariboli
 Edward & Cecelia Nassif
 National Car Rental
 Jim & Sherry Nelson
 Susan A Nesbit-Fisher
 Scott & Barbara Nessa
 Newton Animal Clinic

Roy Nielsen III
Norwest Bank of Ames
Norwest Financial
Oldson Plumbing Inc.
Steven K. & Gretchen Olson
Ottumwa Ford-Lincoln-Mercury
Virgil & Carole Pates
Donald R. & Janet Payer
Perry State Bank
Norman D. Peyton Seeds
Marvin A. Pomerantz
Lois A. Poppe
Tom & Michelle Randall
Richter Stock Farms Inc.
Max & Shirley Rogers
John W. Rogers
Richard & Diane Roseland
Rydell Chevrolet
Sales Force of Des Moines
Duane & Alpha Sandage
Charles Leroy Schmidt
Thomas Schmoker
John K. Scott
Vaughn Allen Seaton
Richard Henry Severson
David & Lynne Shoultz
Wesley Shubert
Dwight L. & Margaret Smith
Roy & Carole Sours
Robert William Stafford
Steven C. & Marcia Stahly
Thomas Stark
Starlite Village-Fort Dodge
State Center Boosters
Michael & Jean Steffenson
James P. & Tamara Stein
Stenberg Concrete Construction Co.
Daniel & Jill Stevenson
Mel Straub Corp.
Sukup Mfg. Company
John & Phyllis Sunins
Tom Swoyer Family
Tama Grundy Cyclone Club
Taylor Industries Inc.
Dr. Mark Taylor
Thomas C. & Linda Thomas
Alan & Marlene Tiefenthaler
Trickle's Firestone
Rick W. Vandenderen
Village Veterinary Clinic
Jerald & Arlene Vogel
Jim Wagner Lincoln-Mercury-Nissan
Wallaby's O'Mally McGees
Bill & Betty Waters
Merle R. Weaver Estate
Larry Wenzl
James Francis Willer
Ron Wiley
The Wilson Family
Thornton A. Wilson Jr.
Leonard & Anna Marie Wise
Wayne C. Workman
Dan & Arjes Youngblade
Jim & Barbara Zbornik
Zeidler's Inc.

GOLD PLUS Club

ACI Mechanical Corporation
Don & Carol Aanstad
Adamson Clark Landscape Architecture
Dale & Marjorie Albrecht
Ron & Marcia Alleman
James & Donna Allen
Eldon D. Amandus
American Republic Insurance Co.
Kenneth & Martha Anderson
Robert & Marcia Anderson
Architects Rudi/Lee/Dreyer
David H. Arnold
Kevin & Brenda Asklund
Audubon Manning Vet Clinic
John & Joni Axel
Darrell Richard Axtell

Rick & Marlis Backus
William Atherton Baird
Dan Warren Barrett
John W. Baty
Beck-Ericson Inc.
Todd & Jody Berg
Kelley Arnold Bergstrom
Marvin & Barbara Berry
William Howard Beswick Sr.
Beswick-Simpson Partnership
Dr. & Mrs. W. D. Blohm
Blue Cross Blue Shield of Iowa
Wendell & Beulah Body
Robert & Beverly Bole
Boone Construction Inc.
Roger Bottema

Dean Allen Bowden
 Quentin & Inez Boyken
 Brenton Savings Bank
 Brosnar Implement Inc.
 Dr. James A. Buck
 Verle & Jo Burgason
 Kent Douglas Burhenn
 Joe Busch Ag Repair Inc.
 Terry D. Buzbee
 Byron Originals
 Robert & Elizabeth Carlson
 Dan & Bev Carter
 Cedar Valley Corp.
 Central States Roofing Co.
 Paul & Art Chingren
 Robert & Sharon Chittenden

George Emert Clemons
Pat Clemons, Inc.
Paula Clemow
Cling Farms
Michael & Susan Clouser
David Coe
Ed & Gayla Coffman
Bill & Ginny Colville
Continental Western Insurance Co.
Bill & Jan Cooper
Cooper Mfg. Co.
Russell & Carolyn Copley
Corn States Metal Fabricators Inc.
John D. Cosgrove
Jack J. Cowan
Cownie Company

CARDINAL & STATE'S 750 Club ★ ★ ★ ★ ★ ★ ★ ★ ★ ★ ★ ★ ★ ★ ★ ★ \$500-\$750

Accurate Mechanical Co. Inc.
Hoyt & Mary Acuff
David & Deborah Adams
Agri-Industries
Kenneth Albaugh
Bruce & Connie Allen
Randy & Stephanie Allen
Robert & Sheryl Allen
Mrs. Margaret Helen Anderson
Marcia & Danny Anderson
Dennis L. Anderson
Keith B. & Susan Anderson
Robert N. Anderson
Marvin & Julia Anderson
Dale E. & Shirley Anderson
Ronny D. Andrews
Wayne Ankenbauer
Colleen Armstrong
Artistic Mfg. Corp.
Axland & Axland
Edward Warren Backlund
Terry L. Bails
Alvin & Bob Baird
Danny & Kathy Batt
Dick Begg
Randy & Susan Beichley
Kim Beisser
James Belisle
Mark Benda
Fred & Janis Bendinger
Joel Benson
Steven Berends
Alan L. Bergman
Steve & Arnie Betts
Big 8 Tyre Center
Wilmer & Judy Bitz
John & Deanna Blecker
William Ralph Bliss
Terry P. Bloomer
Edward J. Bock Jr.
Roger Bohning
Boone Bank & Trust Co.
Joseph Elmer Borg
Fred & Dianne Borgen
Norman & Roselynn Boyles
John Emmons Bragdon
C. H. Brandt & Sons, Inc.
Catherine & James Brendeland
Brenton Bank & Trust Co.
Brenton National Bank Perry
Fred & Mary Brich
Steven & Janis Britson
Dennis Brock
Glenn Francis Brockett
Brokers International of Iowa
Donald & Pam Brooks
Keith Brown
Robert W. & Allison Brown
James Verald Brown
Rocky Brown
J. Kent Brown
John Dwight & Betty Brown
Keith Bruening
Buchman Heating & Cooling
William Mason Buck
William E. Budd Jr.
Craig C. Bumgarner
Paul & Gloria Bunge
Joe W. Burden
Kenneth & Kathie Burditt
Harvey & Kathryn Burkholder
Richard H. Burnett Jr.
Nadine & William Buss
Ross Buttolph
Jim E. Campbell
John William Carey
Carroll Veterinary Clinic
Jeff Carter
Randy T. Catron
Cedarapids Inc.
Central Western Fabricators Inc.

Joseph C. Chandler
Charles Oldson Memorial
Alan & Bev Chipps
Gary & Ann Churchill
Steven & Rhonda Claussen
James D. Cocking
Sam & Sue Cogdill
Kenneth & Claudia Conrad
Continental Western Life Insurance Co.
Robert & Jane Conway
Debra Covey
Harold & Susan Cowles Jr.
Kenneth & Dona Cowman
Steven R. Crawford
John Crone
Maxine Crouch
John & Mary Crowley
Fred & Veronica Dark
Daters Farms
James & Alice Davidson
R. L. Davison
Decker Sporting Goods
Roger Dewolf
Dircks Farms Inc.
Laurence B. Dittmer
Dean & Cindi Dueland
Dennis Wayne Dunn
Durlam & Durlam Inc.
East Story County Cyclone Club
Larry H. & Barb Ebberts
Neil Eberline
Mark & Rosalie Eimers
Electric Pump
Leonard Ellertson
Doug & Jan Elliott
Elliott Farms
Robert G. & Alyce Elmitt
Bruce Engelke
Environmental Resource Services
Mrs. Richard Farren
William A. & Leona L. Farris
Rich & Alice Fellingham
E. Dean Fick
First National Bank West Union
First State Bank - Huxley
Kent M. Forbes
Fort Dodge Asphalt Co.
Foto & Stereo Inc.
Nancy Franzenburg
Charles & Joanne Frederiksen
Kenneth Fredrehsen
James G. & Clare E. Frevert
David Eugene Frieberg
Reinhard & Maureen Friedrich
Dennis Kent Friest
Joe & Deb Frizzell
R & M Frizzell Memorial
Roger E. Frost
Gaarde Insurance Associates
Gable Memorialkate
Mack & Cindy Gabrielson
Gallery 319
E. Thurman Gaskill
Jeanne & Jack Gehm
Ann Gersie
Steven & Sue Gibbons
Steven John Gleason
Don & Carol Good
William Albert Goodwin
John G. Graham
Richard & Alice Greene
Bruce & Danette Greenfield
James D. Grundmeier
Gus Construction Co. Inc.
Larry & Melody Gustafson
Steven R. & Lisa Gustafson
Bill & Shannon Haas
Haakinson & Beaty Co. Inc.
Terry & Joyce Hagebock
Hair & Company
Hairy's Ltd.

Hammer Electric Inc.
William D. Heggen
Karen & Al Hermanson
Randy Highness
Scott Hall
Tom & Kay Hannum
Robert J. Hanrahan
Oliver Andrew Hansen
Happy Joe's
Pat & Paula Hart
Don Haugo
Kim & Lois Heckert
Don W. Heineking
Dale Helling
Doug Hill
Larry Dean Hindman
Michael & Deana Hoeg
Edward G. Hoffman
Kent V. Hollrah
Paul G. Holmquist
Dean & Janis Holsman
Robert E. & Rachel Holst
Homesteaders Life Co.
Harold M. & Clara Hoover Jr.
Keith Hora
Daryl Calvin Hormann
Richard & Sandy Horton
Duane & Delores Hovick
Larry Max Hummel
Michael W. Hurley
Dayl Lepaul Inglett
Mrs. Clarence B. Inman
Iowa Concrete Products Co.
Iowa Realty Company Inc.
Iowa Western Farms
James & Evelyn Jackson
William Wayne Jackson
Roland & Mina Jacobs
David Robert Jacobsen
Doug Jacobsen
Alfred Merlyn Janssen
Frank & Cindy Jennings
Chris Jerome
Dr. Martin & Patty Jischke
Bryon & Mary Johnson
Jay D. Johnson
Peggy & Clive Johnston
Richard & Diane Jones
Edward E. & Susan M. Jones
William M. Jurgemeyer
Kapaun & Brown Inc.
Steven & Julie Karber
Rick Kasperbauer
Kevin & Deb Keefe
Marcus & Carolyn Kehrli Jr.
G. A. Kent
Richard & Roberta Kerdus
Bruce & Sara Ketcham
Marilyn Kiliper
William I. Kimberley
Dean Kingston
Norman & Donna Kinkade
Karen A. Kline-Jerome
Craig & Suzanne Klocke
Dean Stanton Kloock
Michael Lee Knedler
Donald H Knudson MD
David J. & Lisa Koester
Robert Lewis Kollmorgen
Wayne Orvy Koos
Duane William Kruckenberg
Brian G. & Susan R. Kucera
Arthur & Judith Kuhn
Gary Laabs
Curtis W. Lack
Paul E. Lahmann
George & Jane Lamair
Ron Lambert
Dona Sue Lane
Allen G. Lang
William C. & Debbie Larsen

R. W. Larson
Lawrence S. Larson
William & Sue Layman
Fred & Sondra Lazear
Tom & Catherine Leners
Gordon G. Leth
Jesse W. & Linda Lewis
Joyce Elaine Lien
Maurice W. Lindquist
Howard Logan Farms
Mark A. Lomen
Sheila Lundt
Mary Lunt
Al Luzum
Robert Lynn
Mac Chambers Agency
Tom & Nancy Macklin
Jere & Linda Maddux
Richard F. Marshall
Walter G. Martin
Brian E. Mason
Pat & Burt Mastrofski
Virgil A. Maxwell
William C. McCarten
James Carroll McCaulley
Larry & Kathy McCaulley
Michael K. McDonald
McGladrey & Pullen
C. H. McGuiness Company
Harold E. McKinney
Dennis McLaren
Burnett Mens
Vernon M. Meyer
Ronovan & Jane Meyer
Lonny Miesner
Janice Miller
John J. & Pam Miller
Larry F. & Kathy Miller
Jeff & Cristy Molander
Allen Thomas Moore
Rex & Georgia Moore
Steven & Michelle Mores
Michael Morris
J. R. Mortimer
Wendell & Marilyn Mortvedt
Don & Zarilla Mosher
Moss Distributing Co.
Motor Ways Inc.
Dennis Muehling
Harry & Pam Mundt
Duane Milton Murken
Bob & Donna Murphy
James & Jeanne Negus
Robert Edward Nelson
Nepco Investments
Nepco of Humboldt
Anton Josef Netusil
Jon & Jill Neuschwanger
Owen Jay Newlin
Merle D. & Mary Nieman
Nancee & Karl Nilsen
Jerry & Phyllis Nixon
G. Lynn Norcross
Leslie A. Norman
Jade & Geri Oelmann
Duane A. & Pam Ohrt
Jim & Frankee Oleson
Delores S. Oliver
Sharon Olson
Omaha-Council Bluffs Cyclone Club
Garry & Kathy Osborn
Wayne O. & Eleanor Ostendorf
Don & Jan Ostermann
Dennis Otten
Gail Outtrim
Jon & Jill Packer
Mark & Gia Paris
Richard Sherwin Parker
Patricia & Randall Parker
Dr. W. Robert Parks
John C. Parrott Jr.
Prem S. Paul

CARDINAL & STATE'S 750 Club ★ ★ ★ ★ ★ ★ ★ ★ ★ ★ \$500-\$750

David L. Pauling
Bob & Patty Payer
Donald D. Peeler
Michael & Betty Perry
Leo & Suzanne Peters
Jon & Kim Peters
Cal & Carol Peterson
Donald E. & Janet Peterson
Gale M. Peterson Jr.
Jack Petty
Piper, Jaffray, & Hopwood
William E. Plantan
Thomas William Polking
Samuel D. & Jewel Porter
William K. Poston Jr.
Sidney & Diana Pounds
Robert & Geraldine Pratt
Louis Prenger
Dr. Gerald Pribyl
Randall & Marcia Purdy
Putco Inc.
R-B Associates Inc.
David Ranney
Tracey & Jerome Rayhons
Red Oak Greenhouses Inc.
Jerry L. Reed
Charles Reedholm
Tim & Lora Reeve
Reynolds & Reynolds Inc.
Russ & Del Richardson
Joe Richtsmeier
Charles Ricketts
Carolyn Ringgenberg
Ron & Pat Robbins
Richard J. Robinson
Jerry & Mary Ross
Gary Rottler

Jim & Connie Ruebel
Dennis & Rose Salemink
David M. Sampson
Gary Sampson
Mary & Raymond Scheve
Allen Schipull
Fred & Terry Schlunz
Vernon Schrimper
Stanley & Andrea Schroder
Jim & Janet Schuessler
Paul Alan Schwartz
Seneca Foundry Inc.
Richard W. Settle
Clem W. Sevdle
Arlin K. Severson
Mark & Paula Seward
Patricia Shafer
John Melvin Shanda
Rich Shannon
Loren & Joyce Shiers
Anna Shockley
Kenneth Showalter
Clyde & Mary Ellen Shugart
J. Kirk Simpson
Wayne Skartvedt
David & Alison Smoldt
Larry Sobek
Lowell & Phyllis Soderstrum
Dr. T. W. Speas
Mark S. & Gwen Speck
Brent M. Spurgin
Pam St. John
Marvin & Shirley Stakey
Dean & Vera Standley
Douglas L. Stanford
Bruce Staples
Scott Stecher

Dr. Keith Stecker
Steel Warehouse Inc.
Brian Steffen
Leonard Stenzel
Gary & Janice Stephens
Emmett J. Stevermer
Jack & Rhonda Stewart
Dean Robert Stickrod
Max Stillinger
Dahlia & Harold Stockdale
Robert E. & Nancy Stone
Dennis Lynn Storey
Daniel Strother
Robert D. Swanson
Joe Syata
T.H.E. Appraisers
Mrs. Dick Tallman
Jerry Tank
Verne & Donna Tanner
Scott Taylor
Robert J. Templeton
Mark & Deb Terrones
Thermo King
Luverne & Elaine Thiessen
Kim W. Tiefenthaler
Douglas & Christine Timmons
Tom Trafals Organization
Richard Treman
Gerald William Truemper
Edward Lane Tubbs
Tom & Becky Tuttle
Vern & Liz Uchytill
Maynard & Marilou Ukena
Van State Bank
Van Hauen & Associates
Myron R. & Gary W. Vancleave

James Vancura
Brian & Janice Veach
Liz Venner Kurt
Linda & Don Verrips
Carl F. Vondra
Steven Voss
James W. Walker
Thomas Walsh
Jonathan & Gail Ware
Warren Transport Inc.
John L. Warrick
Steven Ray Waters
Mrs. Burton Watkins
Russell H. Watt
Weidemann Inc.
David J. Weihs
Marc & Beth Weinbrenner
Richard Carl White
Steven W. Whitehead
William Nelson Whitehill Jr.
Charles Whittenburg
Jerry L. Wille
Dale Rowland Williams
Pam & Doug Williams
Robert M. Williams
Glen S. Wilson Jr.
L. David Wing
Sam & Carol Wise
Anthony J. Wolfe
James & Cheryl Wong
Dan Lee Woodin
Wright Tree Service Inc.
Roger & Monica Youngblut
Glenn Ray Ytzen
Larry & Kathleen Zimplerman

STATE'S 250 Club ★★ ★★ ★★ ★★ ★★ ★★ ★★ ★★ ★★ ★★ ★★ ★★ ★★ ★★ ★★ ★★ ★★ ★★ \$250

Eric & Barbara Abbott
Abens-Marty-Curran Insurance Agency
James E. Ackerman
Becki & Mike Adair
Adel Vet Clinic
Mel & Norma Adema
John Henry Ahart
Stephen M. Aigner
Air Electric Machine Co.
Miles V. Albright
Hoyt Hill Allen
James Charles Almquist
Anderson Erickson Dairy Co.
Dale Edwin Anderson
Larry P. Anderson
John R. & Mary Anderson
Brent Anderson
Ober Jay Anderson
Donald C. Anderson
Herschel & Edna Anderson
Bonnie Anderson
Dennis Andrew
Applebee's Neighborhood Grill & Bar
Tom A. Arnold
Jeffrey S. Aten
Richard E. Atkins
Robert Zika Bachman
Keith Bailey
Wendell & Donna Bailey
William & Sue Ellen Ballard
Mary Jo & Jon Banwart
Duwayne & Dawn Barkema
Dean L. Barnes
James Barr III
Ken & Carrie Barrick
Theodore French Bartley
Frank M. Barvinek

Gary M. Basler
Ruth J. Bassett
John & Elaine Bath
Robert John Bauske
R. H. Beatty
Irene Beavers
Merle Been
Milo H. Been
Donald Beitz
Charles & Marlene Bell
Steven & Jolee Belzung
Raymond R. Beneke
Wilbur Dean Bennett
Lois A. Benning
John A. Beno
Garren O. Benson
Susan & David Benson
Michael Frank Berard
Walter T. Bergeson
Bob Berggren
Delbert Henry Berghoefer
Harlan Berglund
Albert J. Bevollo
Don Biederman
Bilbrey Insurance Services Inc.
Willard Bishop
Barbara J. Black-Brafford
Blankenship Bros.
David Arthur Block
Eugene & Vivian Block
Delwyn Bluhm
Helen G. Bohlen
Dave & Susan Bolte
Bolton & Hay Inc.
Thomas R. Borg
William J. Bowden II
Richard L. Bowman

Robert B. & Opal Boyd
David Ray Boylan Jr.
Paul O. Brackelsberg
Bruce & Carolyn Braley
George Brant
Dick & Jerri Braun
Richard L. Bray
Janice & Jeff Breitman
James & Sharon Brewer
W. Joseph Bridges
Dennis Bristle
The Broiler
Brokaw Supply Co.
Stanley & Phyllis Brokaw
Victor & Margaret Brown
Fred G. Brown
Steven C. Brown
J. Douglas & Martha Brown
Robert Leroy Brown
Robert Gemmel Brown
Howard Edgar Brubaker
Vernon & Margery Bruce
Dr. Wayne F. Budding
William & Kay Bullock
Patrick & Cathy Burns
Monte Eugene Burr
Paul Raymond Busch
Harry & Nancy Buseman
Daniel Everett Buss
Benton W. Buttrey
C & M Farms
John Howard Cairns Jr.
John & Nathan Callahan
Kenneth Calvert
Patty Campbell
James H. Campbell
Cardinal Electric

Glenn Lee Carper
Charlene Carsrud
Richard B. Carter
Charles William Case
Bob & Peggy Casper
Bob & Sylvia Casterton
Lauren & Nelda Christian
Al & Shirley Christian
Christian Printers Inc
Dorothy E. Clabaugh
Vaughn Leo Clark
Tracy L. Clark
Galen Clouser
Larry Coady
David & Patsy Cody
Douglas K. & Dianne Cooper
Scott & Marge Core
Curran D. Cotton
Kenneth W. Craig
Daniel John Cramer
Joe Vernon Crawford
Harold & Rachel Crawford
Charles Peter Crawford
Gary W. Creasman
J. Wiltsie Cretsinger
Edward Crist
Gregg Crouch
Crown Ready Mix
Cummins Great Plains - Cedar Rapids
Dan William Cunning
Larry Rodger Curtis
Carol Bruce Curtis Sr.
Roger & Carole Custer
John L. Cyr
Warren R. Daasch
Laura C. Dailey
Jerry Daley Memorial

John J. & Barbara Dalhoff
Randal Dalhoff
Larry Edward Davidson
Raymond H. & Linda Davis
Vincent W. Day
William K. Deal
James Dean
Ronald E. Deiter
Paul & Deb Dekker
Mark Vernon Dengler
Larry & Louise Dewitt
Michael Dierenfeld
David Alan Dirks
Dale & Debra Dittmer
Dan Dolan
Double H Farms
James R. Dow
Gary E. Downs
Faye & David Draper
Woodrow Emmett Dreeszen
Ray Delmer Drefke
Dale Lavern Drum
Kevin Drury
Everett Dryden
Brian P. Duff
Stephen & Jean Duffy
Laine Dvorak
Sondra & Dave Dyer
E. & F. Quality Quick Print
Donald L. & Sharon East
G. R. Eggen
Donald Eggerling
Dr. Robert L. Eggers
Jonathan Ehlers
Paul William Elam
Chuck Elder
Bruce Elgersma
Donald Wayne Elk
Orvilla Elleby
Lindsay C. Ellingson
Mike & Pat Ellingson
Craig Milton Ellsworth
Richard Lee Engen
Scott & Diane Engquist
Mrs. George Engstrom
Roland Eppert
Lowell Paul Erdman
Larry Erickson
Dennis & Gloria Erickson
Ramona Luella Esbeck
Brian Espeland
Casper T. Estrem
K. Mark & Rebecca Etchen
Elve Everage
Jim Faga
Gary & Joni Fancher
Thomas E. & Sharon K. Fenton
Richard A. Fidler
Financial Benefits of Perry
Bert L. & Amy O. Finsand
First National Bank of Manning
Mark & Rhonda Fiscus
Mark Charles Fisher
Cynthia Fletcher
Lehman B. Fletcher
Michael J. & Teresa Flynn
Craig R. Foss
Bob & Karen Fowser
Deborah & Glen Franck
Donald & Dianne Frazer
Albert & Christine Freeman
Dorothy Fribley
Verlyn & Barbara Frohling
Frontier Realty Inc.
Hon Pong & Annie Fung

Lucy Futrell
 Joel & Kathy L. Gabrielson
 Carl D & Kathryn Galey
 Robert & Pat Galligan
 Jennifer Garrels
 Harlan & Betty Geiger
 Maurice L. Geist
 Ray Getting
 Janet L. & Gregory G. Glaser
 Lynn W. Glass
 John Richard Gleeson
 Ruth Glock
 Duane Godfrey
 Don & Doris Goering
 Alvin Theodore Goettsch
 D. Greg & Kathy Goodman
 Mark & Susan Goranson
 John P. & Jada Graham
 Lowell F. Greimann
 Ronald Lee Grier
 Benjamin R. Guenther
 David & Patti Guessford
 Lynn & Lorraine Habben
 Arnel Roy Hallauer
 Dennis & Carol Hamman
 Robert R. Hansen
 Biddie C. Hanson
 James Dale Hanson
 Norma & Harris Hanson
 Eldred John Harman
 Dean Corbin Harmon
 Lance Hartwig
 Ed & Mary Ann Haver
 Claude & Joy Havick
 Marvin Hayenga
 Thamon Edson Hazen
 Doug & Nancy Heathman
 Robert M. Heaton
 Dean Heetland
 David & Kathy Hein
 Judy Heintz
 Darrell Edward Helgens
 John & Linda Helling
 Frederick Hembrough
 Jean Charles Hempstead
 Craig & Neva Henderson
 David C. Hendrickson
 Donald Joseph Henrich
 Vern & Lane Henricks
 Steven M. Henry
 James Joseph Herbert
 Larry & Jane Herbold
 Ray & Darlynn Herweg
 Hewett Wholesale Inc.
 Bob Hild
 Hillshire Farm
 Steve Hippen
 Don & Molly Hiscocks
 Dr. Harold H. Hodson, Jr.
 Douglas D. Hofbauer
 M. Peter & Lorraine Hoffman
 Carl & Marilyn Hokel
 Roger J. Holck
 Dean Franklin Holland
 Glen E. Hollister
 Art Holloway
 Holtze Construction
 Kevin & Denise Holubar
 Gloria & Bill Homan
 Gary & Sharon Homan
 Kenneth R. Hook
 Maury Michael Hope
 John R. Hornberger
 Harry T. & Cecilia Horner Jr.
 Joni Houck

Steve Houglund
Barb & Bill Houk
Richard & Joan Hoveland
Stephen L. Howard
Edward A. Howes
Kenneth Winfield Huckle
Mike & Crystal Hughes
Richard A. & Judith O. Hughes
Humes Distributing
Merle & Leona Hunt
Pat & Sharon Hunt
Charles Richard Hurburgh
Robert R. & Bonnie D. Hurst
Etha S. Hutchcroft
Dean & Linda Hutchison Jr.
Jim Hutter
Ken & Linda Hutzell
Dennis & Joan Ingwersen
Iowa State Savings Bank of Knoxville
Mark & Gina Isebrands
J & K Sanitation
Charles & Evelyn Jacobs
Jerry & Lynn Jenison
Rollie & Phyllis Jenison
Marc E. Jenkins
Dean & Kathy Jennings
Clark & Scott Jensen
Dennis V. Jensen
Craig Jensen
Randall G. & Beth Jensen
Charles Howard Jensen
Clarence & Patricia Jensen
Jim & Steve Smith Insurance
Alfred William Joensen
Victoria M. John
Mildred L. (Sally) Johnson
Bruce E. Johnson
Marvin L. Johnson
Jeff Johnson
Drs. Johnson & Varland
Steve & Diane Jones
Jim & Mary Jones
Becky Seim Jordan
Mike Jorgensen
Dale E. Juergens
Jewell Jung
Steve Allan Junge
Dave & Sharon Juon
K-Jon Homes
Robert Rankin Katton Sr.
Ralph & Janice Karne
Gerald Louis Katzmann
John Clarence Kavalier
Paul James Kelly
Ken Kemna
Donald Keltner
Stephen B. Kenkel
Stephen & Charlene Kenkel
Jerry Kennedy
James Carleton Kenney
Rupert E. Kenyon Jr.
Ronald Dean Kerr
Dennis Kesler
Jesse & Cora Kimbro Jr.
Jeff & Karen Kincart
Arthur & Marlene King
John Robert Kingland
James J. & Elizabeth Kiser
Wayne & Karen Klaiber
Wilbur & Marie Klaver
James & Joyce Kliebenstein
Mark & Stacey Klocke
Greg Knau
Jim & Kathy Knauss
Loren Knox

F. William Koenig
Jeannette M. Korslund
Russell J. Kramer
Francis Krueger
Ardella M. Krull
Loren J. Kruse
Michael E. Kukral
William Kunert
William Somers Lagrange
Russell H. Laird
Mary Lande
Gary Landhauser
Landmands National Bank
Keith L. London
Mr. & Mrs. Jim Langland
William Ralph Lanphere
Edward C. Larsen
Al & Jan Larsen
Julie Larson
Larry D. & Sandy Larson
Judy L. Larson
John & Julie Larson
Loren P. & Karen A. Larson
Maurice Allen Larson
Charlotte T. Latta
Perry M. Laures
Dan Lawlor
Roger L. Lawrence
Paul L. Lem
Mary Lents
Sue Lerdal
Thomas & Judy Ligouri
Gary Linahon
James & Karen Lively
Donald R. & Jean Livingston
Larry & Janet Lockwood
Loess Hills Inc.
Harry Phillips Lortz
Marc & Shelley Lott
June K. Lovejoy
Linda & Mark Lowe
Dick & Jan Lowe
Bernard F. Ludes
Steve Lynn
Robert & Kathleen Lyon
Belinda Lyons
Larry MacDonald
Mike Mace
David MacMorris
Lottie Magill
James & Pauline Mairs
Mallard Veterinary Clinic
Dennis & Kathy Manfull
Londell & Karen Mannes
Manning Trust & Savings
Mikael & Jo Anne Mansmith
Charles & Mary Manternach
Tim & Dawn Marsh
Leland John Marshall
Paul & Sara Martin
Anne Martin
David L. Massarini
Kevin & Nancy Mathis
Kent & Laura Mattison
J. M. McAdams
Jean McClugage
Vivian McCorkle
Melissa McCormick
Tom & Chris McCoy
McCunn Implement Co.
Donald McEntee
Denis McGee
Wayne & Ruth McGinnis
McHenry Distributing Co.
Gene McKern

James R. McKlveen
Diana McLaughlin
McMaster Company
Larry Meacham
Donald Joseph Mellskog
William & Barbara Mengeling
T. H. Mercer
Cletus R. Mercier
Lori Merritt
Ruth A. & Clyde Meyer
Joe Meyer
Arlo & Lori Meyer
Donald Lee Meyer
William H. Meyers
Midco Supply Co.
Erik & Patty Miles
G. Lynn Millard
Don Miller
Alice B. Miller
Steve & Marilyn Millhollin
Harold Mindermann
Randy & Lisa Minear
William L. & Dianna K. Mishler
Herbert W. Moench
Loran Eugene Mohr
Duane R. Monson
James R. & Joan L. Moore
Linda Moore
Larry & Rae Morgan
Paul & Fran Morgan
J. Brent Morrison
T. Joseph Morrissey
Lyle E. & Harriet Morse
Robert Mortensen
Arthur Dean Morton
Ronald Moses
Mosher Engineering Co.
Greg & Sue Mulhall
Richard E. Mull
Ellen & John Mullen
John & Ellen Mullen
James Aaron Mullins
Roger Murphy
Bruce Myers
Steven K. & Nancy Myers
William Myers
David & Carolyn Nagel
National Bank of Waterloo
Walt Neal
Betty Nervig
Nestle Foods Co.
John E. Neumann
W. Nicholas Neumann III
John & Darla Newton
Tom & Sheri Nicholson
Jim & Rhonda Nissen
Dwain Noffke
Frank & Cheryl Nogel, Jr.
Keith A. Nolte
Alvin & Dawn Nunnikhoven
Vinton Nutt
Donald E. Nystrom
James Michael O'Hara
Herbert Raymond Ohrt Jr.
Jeff & Diane Okones
Dale Gwynne Oleson
Vicki & Gary Olsen
Linda & Martin Olson
Bradley Dean Olson
Vicki & David Olthoff
Terry & Takako Otis
Paul & Carol Ouverson
Brian & Jeanne Owens
R. Allen Packer
Janet Padgett

William Kyle Paisley
Greg E. Palas
Christine Pardekooper
Max & Dixie Parsons
Arlen Dennis Patrick
Peter A. & Kathleen Pattee
Allen & Michelle Patten
John William Patterson
William Utley Patton
R. Brent & Peg Pearce
Phillip Theodore Pearson
Homer Perkins
Ronald H. & Jen Peters
Lewis J. & Arlene Petersen
David & Carol Petersen
William J. Petersen
Tracy & Gary Peterson
Glen & Mary Peterson
Larry Peterson
Norman & Theola Peterson
Dan & Cindy Petrie
Doug Plantz
Joseph C. Picken Jr.
Donald E. Pietz
Pam Plath
Calvin D. Ploeger
Patrick D. Plummer
Nancy L. Polster
Max Lee Porter
Precision Machine & Mfg. Co.
Jon Prentice
Kevin & Kathi Prien
Mike Puff
Virginia Pyle
John T. Quinn
August & Paula Ralston
Darrell & Staci Randall
Ron & Sandy Raney
J. Marvin Rankin
Chester Eugene Rauch
Dale & Kay Readinger
Bill Reding
William H. Reinhardt Jr.
Daniel Reschly
Robert H. Reynolds
Rhinehart Texaco
James D. Rhodes
Clyde M. Richards
Scott Richardson
John & Gail Richardson
Herman & Pat Richtsmeier
Thomas Rick
Gerald Elmer Rickert
Elizabeth Riordan
Thomas Allen Robb
Randy & Kelly Rodgers
Steven Paul Roederer
Don & Ardie Roehr
Thomas Ray Rogge
Mark Rooney
Margie Rosenberry
Ken Rosmann
Delmar Wayne Rostenbach
Ron & Karen Roth
Kari Roth
Donald Wayne Rubel
Leo & Betty Runge
Robert & Dorothy Rust
Vernon Ryan
Ken Sampson
Juana K. Sandberg
Ronald Gene & Pam Sande
Jake Sandve
A.C. & J.A. Sar
Alvie M. & Ardis Sarchett

Lynn E. & Pat Schaaf
Arnold Schager
James Schipper
Mrs. Robert G. Schmidt
Eugene & Susan Schmitt
Frederick Raymond Schneider
Steven Douglas Schram
Rhonda M. Schroeder
Lloyd Charles Schubert
Schultz-Kuhlikens Inc.
Carol Edwin Schwaderer
Harris J. Sellers
Dennis Allen Senne
Con & Pam Shaffer
Gary Shamblen
Kenneth & Carolyn Shaw
Robert & Marilyn Shearer
James Dwight Sheets
Shelp Construction
Dr. Richard & Wava Shirbroun
Robert & Karen Shirk
Ron & Cheryl Shreve
Mark Sidles
Keith & Shirley Silver
Lee & Karen Simmons
Ron Simons
Leroy Donald Simonson
John Simonson
Michael Roy Simonson
Lonnie Ray Sinclair
Harold L. Skerritt
Robert Lee Skinner
Bernard Harold Skold
Karsten & Sharon Smedal
Noel & Ruth Smith
Roger Allan Paul Smith
J. W. & Helen Sneller
Emery & Doris Sobottka
Dean Edward Sogard
Earl T. & Myrna Solberg
Maurice W. Soultis
Tom & Betty South
Earl Shaver Spencer
Nancy & Jerry Spittal
Norman L. Springer, Jr.
Paul G. Spry
Sta Bilt Construction Company
Darrell Dean Staley
State Bank of Fayette
Robert Aldon Steen
Don William Steffen
Deborah Ann Steinmetz
Stetson Building Products Inc.
Steven Michael Stoa
Ned & Joanne Stockdale
Delayne & Christine Stokke
Everett George Stoneberg
Paul & Alyce Stratton
Kent Douglas Streeper
Kendall Winship Strohmman
Marvin Henry Stromer
Lorraine & Bill Stucky
Neal Duane Suess
Sully Transport Inc.
Richard Paul Sulzbach
Rick Swank
Irene W. Swanson
Jim & Jan Sweeney
Dennis Swift
Alan F. & Mary Jo Talkington
Ken & Annette Tank
John & Marcia Tannehill
Norman Tasler
John G. Taylor
David & Verda Tesdall

Harold Edward Theille
Theta Delta Chi
Howard Arthur Thiel
Ernie Thomas
Lois E. Thomas
John Laird Thompson
Joan Thompson
R. Bruce Thompson
Neill Stephen Thompson
W. H. Thompson
Todd Thorson
Michael Todd
David G. Topel
Charles L. Townsend
Travel & Transport
Larry William Trepp
Dean W. Trickey
Melvin Tschetter
Don Tubbesing
Tucson Group
Tom Tusha
Gary Twedt
Maynard H. Tweed
Terry Tyrrell
Jacqueline Udorvich
Dean & Ardys Ulrichson
William R. Underhill
United Contractors Inc.
Cecil & Katy Vandygriff
Larry & Beverly Vanfossen
Don & Jean Vangilder
Norman Vansice
Veterinary Clinic of Garner & Ventura
Homer J. Vilmont
Kevin & Judy Vinchattle
Donald Edward Voelker
Terry & Sherry Voy
Ronald Joe Vredeveld
John G. Wacker
John A. Walker
Homer W. Walker
W. C. Walling
Walt's Hallmark Shop
William Dean Walters
Joseph M. Wanzek Jr.
Roy Warman
Donald Robert Warner
Gary & Jeanne Warning
Kim & Joan Wass
Becky & Kevin Watson
Webster City Federal Savings Bank
Randall & Carolyn Weir
Teed J. Welch
Wells Veterinary Clinic
Geraldine Wessman
Ronald Howard Weuve
Don Whattoff
Joyce & Lynn White
Jack Husted & Northa Whiton
Thomas D. Whitson
Thomas William Wickersham
Kenneth Charles Wilcox
David Randolph Wilder
James & Eloise Willems
Gary Williams
Bruce Paul Williams
Walter C. & Kathy Williams
Robert Charles Wilson
Larry Winkelbauer
Merrill D. & Cheryl Wisecup
Duane Woebbecking
David C. Wombacher
Arlen & Karlene Wonderlich
Gary & Donnice Woods
Max S. Wortman Jr.
Carol & Michael Yanda
Jerry W. Young
William R. Yungclas

★ \$100

Brian Nansel
Jim Natzke
Carl Wayne Neifert
James & Joyce Nelson
Leroy Frederick Nelson
E. Helen Nelson
Thomas Walter Neumann
Gordon Nicholas
Dana L. Nichols
Greg Nichols
Donald & Laureen Nickerson
Michael A. Nickey
Hans P. Nielsen
Robert J. Niemann
Robert Nissen
Joseph Franklin Noble
Norwest Bank of Mason City
Thomas R. Novak
Michael F. Novy
Robert S. Nowlin
Paul & Nancy Nurczyk
Robert L. Nutting
John O'Byrne
Tom & Linda O'Neill
Noland & Karen Oaks
W. Reid Odean
Ohrt Brothers
Arthur E. Oldehoeft
Robert Phillip Olinger
Scott E. Olson
Brad Olson
Larry D. Olson
David W. Ostlund
Leland Leroy Owens
John Page
Cloyce & Nelda Palmer
Dennis Wayne Parmenter
John C. Parrott, III
Lanny R. Patten
James & Mary Fran Pedelty
Dean A. Pedersen
Donald Laverne Pederson
Garry Bruce Pellett
Robert W. Pepmeyer
Craig J. Pepper
Darrell & Rosie Peters
Clifford C. Peters
Jerry & Lois Petersen
Geraldine Peterson
Mrs. Ward Peterson
Max J. Peterson
Douglas Pierce
Pingel Tyre & Auto Centre
Bruce C. Piper
Robert John Plathe
Dennis & Beth Plautz
Mark & Linda Podhajsky
Norma K. Pommrehn
Robert & Delores Popp
Posegate Trophies
Tom & Sharyl Powers
Doug & Nancy Pringnitz
William John Probert
M. Marlene Prohaska
Dr. J. L. Ptacek
Patricia J. Quam
Russell L. Rains
Bob & Libby Randall
Rankin Mayfair Cleaners
Frank D. & Barbara J. Rasko
Richard Harrison Rath
Mary G. Ray
Jay Rollin Read
Alice & Jack Rector
John Redfern
Frank Reding

ISU

RECOGNITION

ISU

*The Department of Intercollegiate Athletics wishes to recognize
and express its appreciation to the following Iowa Automobile Dealers:*

CARL & CURT BENSON Benson Motors South Duff @ S 16th St. Ames, IA 50010 	JOHN BURROUGH Ottumwa Ford-Lincoln- Mercury, Inc. 613 Richmond Ave. Ottumwa, IA 52501	LARRY CLEMENT Chevrolet-GEO- Oldsmobile-Cadillac- Toyota 10 South 25th Fort Dodge, IA 50501	PAT CLEMONS Chevy-Buick-GEO- Pontiac-Olds-GMC- Chrysler-Plymouth- Dodge-Jeep-Eagle 1720 S. Marshall St. Boone, IA 50036	JERRY COVINGTON Jerry Covington Chevrolet-GEO Hwy 65-69 North Indianola, IA 51025
DAN DEERY Pontiac-Dodge-Isuzu 7404 University Ave. Cedar Falls, IA 50613	JIM RYDELL RYDELL CHEVROLET 1325 E. San Marnan Dr. Waterloo, IA 50704	ROD FRENCH Kenworth Mid-Iowa 4111 Delaware Des Moines, IA 50313	KEN GOOKIN Gookin Ford 510 Penn Story City, IA 50248	PHIL GRASK National Car Rental Fleur Dr. & Army Post Rd. Des Moines, IA 50321
ROLAND GRIFFITH Griffith Ford-Mercury Hwy. 71 & 30 Carroll, IA 51401	MAX HOLMES Holmes-Oldsmobile- Honda-GMC-Truck 11206 Hickman Rd. Des Moines, IA 50322	PERRY HUMMEL Hummel Nissan- Urbandale 4770 Merle Hay Rd. Urbandale, IA 50322	WES JORDAN Honda of Ames 538 S. Duff Ames, IA 50010	WAYNE LARSON Wayne Larson Collision Specialists 2017 E. Lincoln Way Ames, IA 50010
MIKE MANNING Chevrolet-Pontiac- Cadillac-GEO 2909 South Center Marshalltown, IA 50158 	JOE & STEVE McLAUGHLIN McLaughlin Brothers 216 River Ave. N. Belmond, IA 50421	BOB MICKEY Cedar Rapids Dodge 1919 Dodge Rd. NE Cedar Rapids, IA 52402	STAN & CHRIS MOFFITT Moffitt's Ford-Lincoln- Mercury 525 Story St. Boone, IA 50036	KEN WISE Ken Wise Buick-Olds- Honda-Isuzu-GMC 1000 N. 3 Ave. Marshalltown, IA 50158
BOB PARKS Courtesy Chevrolet- Oldsmobile New Highway 30 Nevada, IA 50201	JOE & BILL PRITCHARD Pritchard Auto Co. Hwy. 18 East Britt, IA 50423 	DON POLITTE Stivers Lincoln- Mercury 4730 Merle Hay Rd. Des Moines, IA 50323 	JIM WAGNER Lincoln-Mercury- Nissan 925 Airport Road Ames, IA 50014 	DON WALLER Stivers Downtown Lincoln-Mercury 1021 Locust Des Moines, IA 50309 
JACK BLACKWELL Blackwell Auto Sales 1268 W. 2nd Ottumwa, IA 52501	GEORGE WHITE George White Chevrolet-Pontiac-GEO New Hwy 30 & 69 S Ames, IA 50010 	RON & MARY WILLEY Willey Ford-Chrysler- Plymouth 323 5th St. Ames, IA 50010	RON & MARY WILLEY Chrysler-Plymouth- Dodge-Jeep-Eagle- EzGo Golf Carts 6th Ave. Nevada, IA 50201	



Donates more than one vehicle.

NEVADA BOOSTERS

Ben Franklin Store

*We Bring Variety to Life
with a Wide Selection
of Crafts & Fabrics!!*



1038 - 6th Street

Nevada, Iowa 50201



FARM MANAGERS - APPRAISERS - REALTORS

LOCAL CYCLONE FANS

Serving Iowa From Seven Locations

Home Office:

Hwy. 30 E. at 11th St.

Nevada, Iowa 50201

515-382-6596

PROUD SUPPORTS OF ISU!!

1995-96 BASKETBALL SCHEDULES

MEN'S BASKETBALL

Nov. 13	Republic of Georgia Select Team (Exh.)
Nov. 19	Wisconsin AAU (Exh.)
Nov. 24	Central Connecticut State
Nov. 28	Wisconsin-Milwaukee
Dec. 1-2	Cyclone Shootout Iowa State vs. Tennessee State Richmond vs. Texas-Pan American
Dec. 6	at Drake
Dec. 9	Iowa
Dec. 16	at Wyoming
Dec. 21-22	ISU Holiday Classic Iowa State vs. Princeton Samford vs. Nicholls State
Dec. 28	Missouri-St. Louis
Jan. 2	Coppin State
Jan. 6	at Kansas State*
Jan. 10	at Marquette
Jan. 13	Oklahoma State*
Jan. 21	Missouri*
Jan. 24	at Colorado*
Jan. 27	Oklahoma*
Feb. 3	at Nebraska*
Feb. 7	at Kansas*
Feb. 10	Nebraska*
Feb. 14	at Oklahoma*
Feb. 17	Kansas*
Feb. 21	at Oklahoma State*
Feb. 24	at Missouri*
Feb. 28	Kansas State*
March 2	Colorado*
March 8-10	Big Eight Tournament Kansas City, Mo.



**Guard
Jacy
Holloway**



**Forward
Julie Hand**

Home games played at James H. Hilton Coliseum

Schedule and times subject to change

*Big Eight Conference game

WOMEN'S BASKETBALL

Nov. 17	Foreign Exhibition
Nov. 24-25	Cyclone Classic Iowa State vs. Idaho State Cal State Fullerton vs. Arizona State
Dec. 1-2	Borden's Lobo Classic Albuquerque, N.M.
Dec. 6	Northern Iowa, 7 p.m.
Dec. 10	at Drake, 2 p.m.
Dec. 15	at Loyola-Chicago, 7 p.m.
Dec. 17	at Wisconsin-Milwaukee, 2 p.m.
Dec. 20	at Creighton, 7 p.m.
Dec. 28-29	Chippewa/Comfort Inn Classic Mount Pleasant, Mich.
Jan. 2	at Oral Roberts, 7 p.m.
Jan. 5	at Oklahoma State*, 7 p.m.
Jan. 7	at Oklahoma*, 2 p.m.
Jan. 12	Kansas State*, 7 p.m.
Jan. 14	Kansas*, 2 p.m.
Jan. 19	at Colorado*, 7 p.m.
Jan. 23	at Missouri*, 7 p.m.
Jan. 28	at Nebraska*, 2 p.m.
Feb. 2	Oklahoma*, 7 p.m.
Feb. 4	Oklahoma State*, 2 p.m.
Feb. 9	at Kansas*, 7 p.m.
Feb. 11	at Kansas State*, 2 p.m.
Feb. 16	Missouri*, 7 p.m.
Feb. 18	Colorado*, 2 p.m.
Feb. 25	at Nebraska*, 2 p.m.
March 1-3	Big Eight Tournament Salina, Kan.

STADIUM INFORMATION

Pass Out Checks

Persons leaving the stadium will be stamped for re-admission to the stadium. In addition, they must have a ticket stub for re-entry. No pass outs will be allowed between noon and 1 p.m. or one hour before kickoff.

Wheelchairs

Special areas in sections 16, 18 and 19 are available for spectators in wheelchairs. In addition, wheelchair seating is available on the field level behind the goal posts.

Ambulance Service

An ambulance is parked in the first aid quarters on the west side of the stadium.

First Aid Station

Emergency medical treatment is available for spectators in special first aid quarters located under both the east and west stands. Contact the nearest usher to request medical assistance.

Rest Rooms

Restrooms are located throughout the stadium behind each concession stand.

Coolers, Chairs Discouraged

As a courtesy to neighboring guests, spectators are asked NOT to bring stadium chairs, lawnchairs, or coolers into the stands.

Smoking Policy

In accordance with Iowa State's smoking policy, there will be no smoking in areas where the general public congregates at Cyclone Stadium. That means people will not be able to smoke in the seating areas or by the concession stands. There may be designated smoking areas near the restrooms.

Service for Physicians

Doctors anticipating calls during the game are urged to register at the first aid quarters under the west stands, leaving their exact seat location. The management will see that all calls are delivered without delay.

Public Telephone

Pay telephones are located behind the east and west stands.

Stadium Sign Policy

Iowa State promotes and encourages the display of signs. All signs must be in good taste and supportive of Iowa State University. In no case may the sign obstruct vision or endanger fans. Signs must be stationary. All signs must be approved by Associate Athletic Director Elve Everage (129 Olsen Building) by noon Friday prior to a Saturday home game. The athletic department reserves the right to move or remove any signs not meeting these specifications.

Emergency Service

Iowa State University and Iowa AAA Motor Club will provide Emergency Road Service for persons attending home football games. This service will be in effect during and within two hours after the game throughout the season. The phone number for the service is 515-233-6636. Proof of game attendance (ie. ticket stub) may be requested. Basic emergency road service includes starts, tire change, gas delivery and unlocks.

Carry-in Packages

Please do not bring into the stadium any bottles, cans, apples, oranges, toilet tissue, etc. Items thrown onto the field can result in a penalty for the home team.

Parking Lot Facilities

The ISU Athletic Department provides portable toilets for its patrons in the parking lots. These are located in strategic spots throughout the stadium parking area.

Distractions

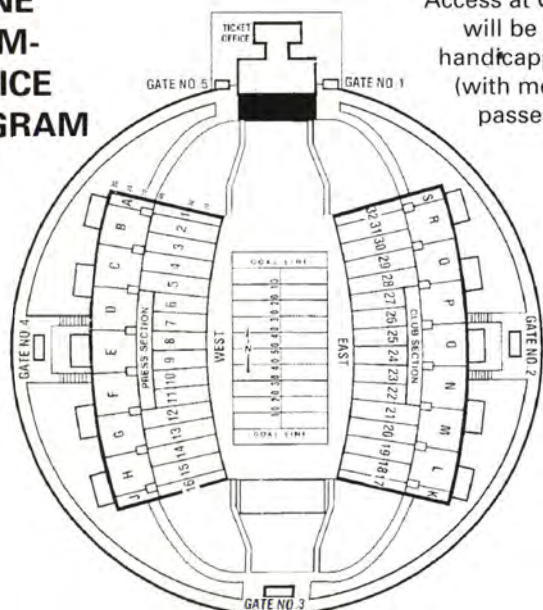
We want to make football game days a totally enjoyable experience and want to encourage you to be respectful of those around you in the stadium. In the event that you feel there is an unreasonable distraction in your seating area, we ask you to take the following steps to help us control undesirable behavior.

- Note the seating section, row and seat numbers and inform the usher in your section of the disturbance. The usher will observe the conduct and request it to stop if appropriate.
- If the conduct continues, the usher will get assistance from a uniformed police officer to request improvements of behavior or to remove the fan(s) from the stadium.
- An additional occurrence is cause for removal from the stadium and could be grounds for relocation in next season's ticket assignments.

Shuttle Service

Iowa State will offer a shuttle service at all home games. The shuttle will begin at the north end of the Olsen Building and will run to the south side of Cyclone Stadium.

**CYCLONE
STADIUM-
JACK TRICE
FIELD DIAGRAM**



Access at Gates 1 and 5 will be limited to handicapped and VIP (with membership passes) ONLY.



ISU CONCESSIONS- For All The Good Things You Love To Eat!



Game days at Cyclone Stadium mean big excitement and big appetites to match. So stop by the ISU concessions stands before, during, and after the

football game to get all of the good things you love to eat.

As the official food and beverage supplier for Cyclone Stadium, we are proud to be part of this great football program and say... Go Cyclones!

The **Swanson**
Corporation

Offering These Diversified Services:

- Concessions Management
- Food Management
- Fine Catering
- Vending
- Office Coffee

3200 South 60th Street • Omaha, Nebraska 68106
• 402-553-4000

COPYRIGHT 1991, THE SWANSON CORPORATION

1995 Iowa State University Cyclone Football

IOWA STATE ATHLETIC STAFF



DALE ANDERSON
Men's Golf Coach



TIM BALD
Compliance Coordinator



STEVE BALLENGER
Assistant Strength and
Conditioning Coach



ED BANACH
Student-Athlete
Counselor



BILL BERGAN
Track and Field Coordinator/
Men's Cross Country Coach



JOAN BOWLES
Assistant Director of
Development



MARK COBERLEY
Assistant Men's
Athletic Trainer



MICHELE CONLON
Women's Tennis
Coach



ERIN DAVISON
Assistant Director,
Media Relations



BOBBY DOUGLAS
Wrestling Coach



BILL FENNELLY
Women's Basketball
Coach



TIM FLOYD
Men's Basketball
Coach



PAM FULTZ
Athletic Ticket Manager



ROGER GADE
Head Equipment
Coordinator



BETH HAAG
Assistant Director,
Media Relations



DENISE HARKLAU
Women's
Athletic Trainer



TRIP HEDRICK
Men's Swimming
Coach



ELAINE HEIBERGER
Assistant Business
Manager



MARY ELLEN JACOB
Student-Athlete
Counselor



CATHY KLEIN
Soccer Coach



DEB KUHN
Softball Coach



DICK LEE
Women's Track and
Cross Country Coach



STEVE LYNN
Men's Track Coach



KATHY LYONS
Student-Athlete
Counselor



JULIE MANNING
Women's Golf Coach



MARY MEIER
Assistant Women's
Athletic Trainer



JIM NESPOR
Physical Therapist/
Athletic Trainer



JACKIE NUNEZ
Volleyball Coach



AMY PYLE
Women's Gymnastics
Coach



BOBBY RANDALL
Baseball Coach



FRANK RANDALL
Men's
Athletic Trainer



DIANE SHEARER
Program Manager,
Development Office



JEFF SHOULTZ
Program Assistant,
Marketing and Promotions



JERRY SYMONS
Men's and Women's
Diving Coach



RAMSEY VAN HORN
Women's Swimming
Coach



MARY ZEIGLER
Program Assistant,
Marketing and Promotions



**"The Finest
Mexican Food"
for Dinner**

**Open Immediately
Following the Games**

232-8807
716 S. Duff
South of Downtown



**Aunt
MAUDE'S**
"Casual Dining"
for Lunch and Dinner
Steaks • Fresh Fish • Pasta
Reservations Accepted
Banquet Facilities Available

**Open Before and
After the Game**

233-4136
547 Main
Downtown Ames

Wallaby's
BAR AND GRILL

292-1167
3720 Lincoln Way
West of Campustown

**"Sandwiches
and Dinners
in a Sporty Way"**
for Lunch and Dinner



Wallaby's
DOWN UNDER

309 North Ankeny Blvd. • 964-8266
Ankeny, IA 50021
(Across from Hy-Vee)



Your Central Iowa



Support the Cyclones

FAREWAY

**IOWA'S MOST
ECONOMICAL
FOOD STORES**

- Boone
- Ames
- Webster City
- Carroll
- Nevada

- Marshalltown
- Perry
- Fort Dodge
- Eagle Grove
- Indianola

- Winterset
- Humboldt
- Toledo
- Cresco
- Newton

- Jefferson
- Des Moines
- Ankeny
- Altoona
- Urbandale

UNIVERSITY OF IOWA

GENERAL INFORMATION

Location: Iowa City, Iowa
 Enrollment: 27,000
 Colors: Old Gold and Black
 Conference: Big Ten
 Interim President: Peter Nathan
 Faculty Representative: Bonnie Slatton
 Athletic Director: Bob Bowlsby
 Head Coach: Hayden Fry (Baylor '51)
 Career Record: 205-158-10 (33 years)
 Record at Iowa: 116-69-6 (16 years)



HAYDEN FRY
Football Coach



PETER NATHAN
Interim President



BOB BOWLSBY
Athletic Director



BONNIE SLATTON
Faculty Representative

HAWKEYE OUTLOOK

1994 Record: 5-5-1/3-4-1, 7th in the Big Ten
 Letterwinners Returning/Lost: 42/21
 Starters Returning/Lost: 17/7
 Offensive Set: Multiple
 Defensive Set: 5-2
 Top Returning Players from 1994:

Rushers	Att.	Yards	Avg.	TD	Lg.
Sedrick Shaw	170	1,002	5.9	7	80
Passers	Att.	Comp.	Int.	Yds.	TD
Ryan Driscoll	154	78	8	1,018	3
Matt Sherman	59	42	2	736	6
Receivers	Rec.	Yds.	Avg.	TD	Lg.
Scott Slutzker	27	379	14.0	2	45
Defenders	UT	AT	Total	Tackle/Loss	
Bobby Diaco	67	49	116	4/8	
Damien Robinson	37	21	58	2/3	



• Wide Receiver Tim Dwight

THE CYCLONE-HAWKEYE SERIES

Iowa leads 30-12

Games at ISU: Iowa leads 12-3

Games at Cyclone Stadium:

Iowa leads 6-1

Dan McCarney vs. Iowa:

First meeting

Hayden Fry vs. Iowa State:

13-3

Last ISU Win:

1982, 19-7 in Iowa City

Biggest ISU Win:

31-0, 1978 in Iowa City

1995 SCHEDULE

Sept. 9	NORTHERN IOWA
Sept. 16	at Iowa State
Sept. 30	NEW MEXICO STATE
Oct. 7	*at Michigan State
Oct. 14	*INDIANA
Oct. 21	*PENN STATE
Oct. 28	*at Ohio State
Nov. 4	*ILLINOIS
Nov. 11	*at Northwestern
Nov. 18	*at Wisconsin
Nov. 25	*MINNESOTA

CAPS DENOTE HOME GAME
 *Denotes conference game

1994 RESULTS (5-5-1)

Sept. 3	CENTRAL MICHIGAN, W, 52-21
Sept. 10	IOWA STATE, W, 37-9
Sept. 17	*at Penn State, L, 21-61
Sept. 24	at Oregon, L, 18-40
Oct. 1	*MICHIGAN, L, 14-29
Oct. 8	*INDIANA, L, 20-27
Oct. 15	*at Illinois, L, 7-47
Oct. 22	*MICHIGAN STATE, W, 19-14
Oct. 29	*at Purdue, T, 21-21
Nov. 12	*NORTHWESTERN, W, 49-13
Nov. 19	*at Minnesota, W, 49-42

CAPS DENOTE HOME GAME
 *Denotes conference game

FUTURE FOOTBALL SCHEDULES

1996

Sept. 7	WYOMING
Sept. 14	at Iowa
Sept. 21	NORTHERN IOWA
Oct. 5	*MISSOURI
Oct. 12	*TEXAS A&M
Oct. 19	*at Oklahoma State
Oct. 26	*at Baylor
Nov. 2	*KANSAS
Nov. 9	*at Colorado
Nov. 16	*NEBRASKA
Nov. 23	*at Kansas State

*Big 12 Conference game
ALL DATES ARE TENTATIVE



Linebacker Tim Sanders

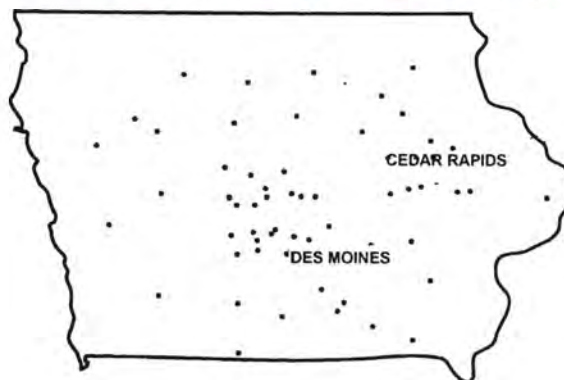
1997

Sept. 6	at Wyoming
Sept. 13	IOWA
Sept. 27	at UNLV
Oct. 4	*at Missouri
Oct. 11	*at Texas A&M
Oct. 18	*OKLAHOMA STATE
Oct. 25	*BAYLOR
Nov. 1	*at Kansas
Nov. 8	*COLORADO
Nov. 15	*at Nebraska
Nov. 22	*KANSAS STATE

TAYLOR BALL

GENERAL CONTRACTORS ♦ CONSTRUCTION MANAGERS

Des Moines: 515-244-4500 or Cedar Rapids: 319-364-2400



• Recent Iowa Projects Taylor Ball/Des Moines - Taylor Ball/Cedar Rapids

- Office Buildings
- Corporate Headquarters
- Parking Structures
- Medical Buildings
- Warehouses
- Renovation
- Grocery Stores
- Restoration
- Churches
- Schools
- Public Buildings
- Bio-Tech Facilities
- Tenant Finishes
- Multi-Family
- Residential
- Adaptive Re-Use

Boulder ♦ Cedar Rapids ♦ Des Moines ♦ San Diego ♦ Kansas City

FOOTBALL SUPPORT STAFF



FOOTBALL ATHLETIC TRAINERS

Front row, left to right: Jerry Ricke, Lanny Bradford, Dana Goodwin, Dave McAndon, Chad McCune, Tim Weesner, B.J. Hoffman

Back row, left to right: Dave Petty, Laurie Rush, Bob Welch, Kim Kirkpatrick, Chad Kinart, Andrea Nevins, Karen Duffy, Leanna Rice, Katrina Vallejo, Kristi Miles, Mike Evans, Head Trainer Frank Randall



FOOTBALL MANAGERS

Front row, left to right: Trevor Bleil, Jeff Boswell, Justin Wiese, Steve Severs, Marcus Johnson, Brian Winkler

Back row, left to right: Jason August, Nate Clayberg, Barney Gehl, Jaime Donovan, Jennifer Muller



FOOTBALL RECRUITERS

Back row, left to right: Renee Ripp, Heather Weber, Jennifer Meskimen, Jen Plagman

Front row, left to right: Sandy Espenmiller, Kristi Clement, Leanne Rohrberg



FOOTBALL VIDEO STAFF

Video Coordinator Mike Motl, Brian Pratt, Mike Widmeyer, Marcus Bliss



BILL LEVINE
Graduate Assistant
Coach



JODY SEARS
Graduate Assistant
Coach



DR. PETER BUCK
Team Orthopedic
Consultant



DR. TOM GREENWALD
Team Orthopedic
Consultant



DR. MARC SHULMAN
Team Physician



MELANIE SHANE
McCarney's Secretary



CARL RICKLEFS
Game Day Operations



DICK DOYLE
Game Day Operations

AMES DOWNTOWN ★ ★ BOOSTERS ★ ★

ORECK XL

FACTORY AUTHORIZED SALES & SERVICE

**AMES SEWING
&
VACUUM CENTER**

AMES SEWING & VACUUM CTR., INC.

214 MAIN STREET AMES, IOWA 50010

(515) 232-1001

TOLL FREE (800) 373-9736



Story County Bank
— & Trust —

301 5th St. • Ames, Iowa

522 Broad St. • Story City, Iowa

GOOD LUCK CYCLONES!

MEMBER FDIC



3 AMES LOCATIONS

216 Main 113 Welch 3712 Lincoln Way

SIGLER

PRINTING & PUBLISHING, INC.

"Good Impressions Since 1958"

"Professionals Serving Professionals"

For all your printing and designing needs!

515-232-6997

PLAY IT AGAIN
SPORTS

526 Main Street - Old Depot

(Next to Garden Cafe)

233-8606

Good Luck Cyclones!
**A GREAT PLACE TO
BUY, SELL & TRADE
YOUR FAMILY'S
SPORTING GOOD NEEDS**



CREATORS OF FINE JEWELRY

For Every Occasion In Your Life...



- Diamonds
- Precious Gems
- Appraisals
- Repairs

Ames Silversmithing

Designers and Goldsmiths


220 Main Downtown Ames 232-0080

IOWA HAWKEYES

- 1 Willie Guy WR, 6-1, 195
Sr. Memphis, Tenn. (East)
- 2 Tarig Holman DB, 6-0, 180
Fr. Randolph, N.J. (Randolph)
- 3 Damien Robinson DB, 6-2, 205
Jr. Dallas, Texas (Hillcrest)
- 4 Ricchard Carter WR, 6-0, 185
So. Passaic, N.J. (Passaic)
- 5 Sedrick Shaw RB, 6-1, 195
Jr. Austin, Texas (LBJ)
- 6 Tim Dwight WR, 5-9, 190
So. Iowa City, Iowa (City)
- 7 Ryan Driscoll QB, 6-4, 220
Jr. Cedar Rapids, Iowa (Linn-Mar)
- 7 Zach Shay DB, 6-0, 185
Fr. Galesburg, Ill. (Galesburg)
- 8 Tom Knight DB, 5-11, 190
Jr. Marlton, N.J. (Cherokee)
- 9 Bill Ennis-Inge DE, 6-5, 245
Jr. Kirkwood, Mo. (Kirkwood)
- 10 Demosneeds Odems, III WR, 5-10, 180
Jr. Austin, Texas (LBJ)
- 11 Jeff Clark RB, 5-11, 190
Fr. Lisbon, Iowa (Lisbon)
- 11 Joe Slattery WR/DB, 6-0, 170
Fr. Pocahontas, Iowa (Pocahontas)
- 12 Matt Sherman QB, 6-3, 207
So. St. Ansgar, Iowa (St. Ansgar)
- 13 Randy Reiners QB, 6-3, 200
Fr. Ft. Dodge, Iowa (Ft. Dodge)
- 14 Trent Tiessen DB, 5-11, 165
Fr. Council Bluffs, Iowa (Lewis Central)
- 14 Cory Hutchings DB, 6-3, 190
Fr. Longview, Texas (Longview)
- 15 Kerry Cooks DB, 6-0, 185
So. Irving, Texas (Nimitz)
- 15 Mark Ede WR, 6-1, 200
Jr. Glendale Heights, Ill. (Glendale Heights)
- 16 Kory Hauser QB, 6-5, 208
Fr. New Berlin, Wis. (West)
- 17 Todd Romano PK, 6-2, 195
Sr. Palm Beach, Fla. (Cardinal Newman)
- 18 Damon Gibson WR, 5-9, 180
So. Houston, Texas (Forest Brook)
- 19 Matt Bowen QB, 6-2, 190
Fr. Glen Ellyn, Ill. (Glenbard West)
- 20 Brion Hurley K/P, 6-3, 214
Jr. Iowa City, Iowa (City)
- 21 Eric Thigpen DB, 6-1, 190
Fr. Dolton, Ill. (Thornridge)
- 22 Tavian Banks RB, 5-11, 190
So. Bettendorf, Iowa (Bettendorf)
- 22 Lawyer Twillie DB, 5-10, 175
So. Burlington, Iowa (Burlington)
- 23 Plez Atkins DB, 6-0, 180
So. Bartlett, Texas (Bartlett)
- 25 Richard Willock WR, 6-2, 190
So. Chicago, Ill. (Leo)
- 26 Damani Shakoor RB, 5-9, 190
Sr. Calumet City, Ill. (Gordon Tech)
- 26 Ed Gibson DB, 5-10, 180
So. Davenport, Iowa (Assumption)
- 27 Chris Jackson DB, 6-2, 200
Sr. Houston, Texas (Westbury)
- 28 Jason House DE, 6-3, 225
So. Iowa City, Iowa (City)
- 29 Mick Mulherin DB, 6-2, 195
Sr. Marion, Iowa (Linn-Mar)
- 30 Billy Coats DB, 5-11, 185
Jr. Grand Prairie, Texas (Lamar)
- 31 Rob Thein RB, 6-0, 210
Fr. Iowa City, Iowa (City)
- 32 Doug Miller RB, 6-0, 185
Fr. Mt. Pleasant, Iowa (Mt. Pleasant)
- 33 Reggie Williams FB, 6-2, 225
Sr. Fresno, Calif. (Bakersfield JC)
- 33 J.P. Lange DB, 6-1, 180
So. Hartland, Wis. (Arrowhead)
- 34 Rodney Filer FB, 6-2, 225
Jr. Waco, Texas (University)
- 36 Scott Yoder LB, 6-2, 228
So. Grundy Center, Iowa (Grundy Center)
- 36 Aaron Granquist FB, 6-4, 230
Sr. Osage, Iowa (Osage)
- 37 Matt Hughes LB, 6-3, 235
Fr. Eastland, Texas (Eastland)
- 41 Marcus Montgomery LB, 6-2, 234
Sr. Walnut, Calif. (Mt. San Antonio JC)
- 42 Tariq Peterson DE, 6-3, 224
Fr. Copperas Cove, Texas (Copperas Cove)
- 43 Tony Stratikopoulos LB, 6-1, 225
So. Montreal, Quebec (Vanier)
- 44 Josh McKillip FB, 6-0, 195
So. Ft. Campbell, Kent. (Ft. Campbell)
- 44 Raj Clark LB, 6-2, 225
Fr. Baytown, Texas (Sterling)
- 45 Bobby Diaco LB, 6-2, 235
Sr. Cedar Grove, N.J. (Cedar Grove)
- 46 Nick Gallery P/TE, 6-4, 239
Jr. Masonville, Iowa (East Buchanan)
- 47 Brett Chambers DE, 6-3, 225
Jr. Council Bluffs, Iowa (Treyner)
- 48 Eric Hilgenberg DE, 6-2, 230
Sr. Prior Lake, Minn. (Lakeville)
- 48 Jason Wahls DB, 5-9, 180
Sr. Garnavillo, Iowa (Garnavillo)
- 49 George Bennett DE, 6-1, 235
Sr. Miami, Fla. (Miami Beach)
- 52 Steve English DL, 6-2, 265
Fr. Mt. Pleasant, Iowa (Mt. Pleasant)
- 54 Brandon Phearse LB, 6-3, 225
Fr. Dallas, Texas (Bishop Lynch)
- 55 Jon LaFleur DL, 6-3, 275
So. Jefferson, S.D. (Sioux City Heelan)
- 56 Vernon Rollins LB, 6-3, 235
Fr. Hackensack, N.J. (Hackensack)
- 57 Aaron Kooiker OL, 6-5, 285
Sr. Marengo, Iowa (Sioux Center)
- 58 Jared Kerkoff DL, 6-6, 260
Fr. Manning, Iowa (Manning)
- 59 Shalor Pryor OL, 6-4, 280
Fr. Stephenville, Texas (Stephenville)
- 60 John Wilder OL, 6-2, 235
Fr. Sioux City, Iowa (West)
- 61 Ted Serama OL, 6-4, 295
Jr. Sauk Village, Ill. (Bloom Trial)
- 63 Bill Reardon OL, 6-3, 265
Jr. Chicago, Ill. (Loyola Academy)
- 64 Derek Rose OL, 6-4, 265
Fr. Naperville, Ill. (Central)
- 65 Mike Bartolini OL, 6-3, 275
Fr. Frankfort, Ill. (Marian Catholic)
- 66 Lloyd Bickham DL, 6-3, 270
Sr. Chicago, Ill. (Robeson)
- 67 Chad Deal OL, 6-5, 280
Fr. Council Bluffs, Iowa (Lewis Central)
- 68 Jeremy McKinney OL, 6-6, 285
So. Brighton, Colo. (Horizon)
- 69 Matt Purdy OL, 6-3, 285
Sr. Cedar Falls, Iowa (Cedar Falls)
- 70 Casey Wiegmann OL, 6-2, 285
Sr. Parkersburg, Iowa (Parkersburg)
- 71 Ed Saidat DL, 6-7, 230
Fr. Chicago, Ill. (Marist)
- 73 Ross Verba OL, 6-4, 285
Jr. West Des Moines, Iowa (Dowling)
- 74 Matt Redman OL, 6-7, 290
Fr. Palos Verdes, Calif. (Peninsula)
- 75 Terry Mueller OL, 6-5, 290
So. Belle Mead, N.J. (Lindenhurst)
- 76 Matt Reischl OL, 6-6, 270
Fr. Greendale, Wis. (Greendale)
- 77 Joel Walsworth OL, 6-6, 270
Fr. Dowagiac, Mich. (Dowagiac)
- 78 Ian Davis OL, 6-7, 295
Jr. Pekin, Ill. (Community)
- 79 Mike Goff OL, 6-6, 290
So. Peru, Ill. (LaSalle-Peru)
- 80 Zeron Flemister TE, 6-5, 215
Fr. Sioux City, Iowa (West)
- 81 Chris Knipper TE, 6-5, 241
Fr. Dyersville, Iowa (Beckman)
- 82 Alexe Rodopoulos WR, 5-11, 180
Fr. Blue Springs, Mo. (Blue Springs)
- 84 Scott Slutzker TE, 6-5, 249
Sr. Hasbrouck Heights, N.J. (Hasbrouck Heights)
- 85 Michael Burger TE, 6-3, 229
Fr. Harlan, Iowa (Harlan)
- 86 Austin Wheatley TE, 6-5, 215
Fr. Rock Island, Ill. (Rock Island)
- 87 Jon Moffitt WR, 5-11, 180
Sr. Des Moines, Iowa (Dowling)
- 88 Jeff Westhoff LB, 6-3, 242
Sr. New Vienna, Iowa (Beckman)
- 88 Tony Collins WR, 6-0, 175
Fr. Davenport, Iowa (Assumption)
- 89 Derek Price TE, 6-3, 247
Sr. Tempe, Ariz. (Mesa JC)
- 90 Aron Klein DL, 6-4, 270
Fr. Appleton, Wis. (West)
- 91 Jay Bickford DL, 6-4, 250
Fr. Hyde Park, N.Y. (F.D. Roosevelt)
- 92 Mark Mitchell LB, 6-2, 230
Jr. Iowa City, Iowa (City)
- 93 Chris Zdzienicki DL, 6-2, 270
Fr. Willowdale, Ontario (Senator O'Connor)
- 94 Jared DeVries DL, 6-4, 260
Fr. Aplington, Iowa (Aplington-Parkersburg)
- 96 Corey Brown DL, 6-2, 265
Fr. Houston, Texas (Willowridge)
- 97 Reynaldo Spalding DE, 6-3, 230
Jr. Los Angeles, Calif. (West LA CC)
- 99 Jon Ortieb DL, 6-3, 260
Jr. Boca Raton, Fla. (Boca Raton)

Old Fashioned
garden cafe

old fashioned foods you'll remember
Breakfast • Lunch • Dinner
Bakery • Take-Out
 OPEN: 6am-9pm Sunday-Thurs 6am-10pm Fri & Sat
call 233-"CAFE"
546 Main St. • Main Street Station • Ames

THE
GOOD FOOD
COOKIE
 archway

Good Times Call for Archway



Visit Us For All Your Party-Game Needs!

PLATES • NAPKINS • TABLECOVERS • CUPS • BANNERS
 BALLOONS • CENTERPIECES • INVITATIONS • DECORATIONS • CARDS
 GIFTWRAP • IMPRINTING • POM-POMS • WEDDINGS • HOLIDAYS

*We Also Print Customized Invitations On Our Laser and
 Computerized Calligraphy Printers!*

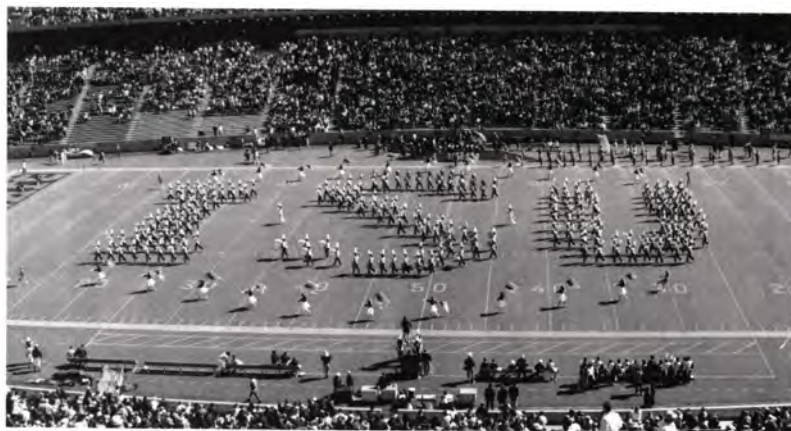
1751 28th Street
 West Des Moines
 Governor Square
 223-7565

PAPOURRI

THE ULTIMATE PARTY STORE!

2814 Ingersoll Avenue
 Des Moines
 243-3370

Now you can adopt the band!



Iowa State Marching Band Staff

Director of Bands	Joseph Christensen
Director of the	
ISU Marching Band	John LaCognata
Percussion Instructor	Barry Larkin
Instrumental Secretary	Pauline Smith
Flagline Instructor	LeAnne Ewan
Administrative Assistant	Matt Hovey
Announcer	Gary Boe



...and its 275 "Marching Cyclones". They show their Iowa State pride all season long by working hard to bring high-spirited, top-rated performances to football games and a multitude of Iowa State Alumni and Cyclone Club functions.

You've applauded their non-stop showmanship and marveled at their abundance of energy. And you know that the Marching Cyclones are one of the finest collegiate ensembles in the country.

Now you can help reward these outstanding young men and women by signing up for the Cyclone Band's "Adopt-the-Band" Campaign. You can choose to "adopt" your very own position in the marching band. By investing in that position, you will have a share in the sounds and spirit of Iowa State music for years to come.

So select a tuba, a clarinet, a student director or an entire rank of big bass drums. When you "adopt" a band member, you provide these dedicated young people with the equipment and support they need to remain one of the best bands in the land.

YES, I want to share the SPIRIT of the Cyclone Bands!

[] Please tell me how to "adopt" a member of the Marching Cyclones.

List your name and address below, then mail to the ISU Foundation and a detailed brochure will be sent to you. A complete band chart will show you how to adopt a member of the band and explain the recognition honors you will receive as a donor.

Name _____ Phone _____

Address _____

City _____ State _____ ZIP _____

Use this form to request more information or make a gift. Mail to the ISU Foundation, Memorial Union/Alumni Suite, 2229 Lincoln Way, Ames, Iowa 50014. Tax receipts will be provided for all gifts and donors may qualify for recognition in various ways. For more information, call the band office at 515-294-2080.

Special thanks to ISU's Department of Intercollegiate Athletics.

Dear Midas Customer,

\$9.99
LUBE, OIL
& FILTER*

Do we have your attention now? Just bring your ticket stub from any Cyclone football game into any participating Iowa Midas shop and receive this great offer or a 5% discount on any service. All season long, no questions asked.

Services

- | | | |
|-------------|-----------------|-------------------------|
| • Exhaust | • Oil Changes | • Steering & Suspension |
| • Brakes | • Wheel Balance | • Shocks/Struts |
| • Alignment | | • Catalytic Converters |

*Up to 5 quarts multi-grade oil.
Most cars and light trucks. Diesel cars extra.

Offer good through January 15, 1996. Offer good only with ticket stub from any Cyclone football game.

Try the **midas** Way. The way it should be.

Ames

113 Lincolnway
232-4153

Clive

1690 N.W. 86th St.
226-1199

Cedar Falls

4810 University Ave.
268-0167

Cedar Rapids

2602 Williams Blvd. S.W.
364-2212
3230 First Ave. N.E.
365-9161

Des Moines

1111 E. Army Post Rd.
285-4905

2201 E. Euclid
265-5333

5618 Douglas Ave.
278-0496

2010 Ingersoll Ave.
243-1253

Davenport

3212 Brady St.
326-0131

Iowa City

19 Sturgis Dr.
351-7250

Sioux City

675 Gordon Dr., East
255-8214

Waterloo

2019 Crossroad Blvd.
234-3588

1995 SCOREBOARD

1995 BIG EIGHT CONFERENCE STANDINGS

	Conference			Overall		
	W	L	T	W	L	T
Nebraska	1	0	0	2	0	0
Kansas State	0	0	0	2	0	0
Colorado	0	0	0	2	0	0
Kansas	0	0	0	2	0	0
Oklahoma	0	0	0	1	0	0
Iowa State	0	0	0	1	1	0
Missouri	0	0	0	1	1	0
Oklahoma State	0	1	0	0	2	0

THIS WEEKEND'S GAMES

Thursday, Sept. 14

TCU at Kansas, 7 p.m.

Saturday, Sept. 16

Iowa at Iowa State, noon

Kent at Ohio, noon

Arizona State at Nebraska, 1 p.m.

NE Louisiana at Colorado, 1:10 p.m.

S. Methodist at Oklahoma, 1:30 p.m.

UNLV at Eastern Michigan, 5 p.m.

SW Missouri at Oklahoma State, 6 p.m.

Missouri at Texas Tech, 6:30 p.m.

*All times for all schedules are CST

IOWA STATE (1-1)

Aug. 31 OHIO UNIVERSITY, W, 36-21
Sept. 9 at TCU, L, 10-27
Sept. 16 IOWA, noon
Sept. 23 UNLV, 1 p.m.
Oct. 7 *OKLAHOMA, 1 p.m.
Oct. 14 *at Kansas, 1 p.m.
Oct. 21 *COLORADO, noon
Oct. 28 *OKLAHOMA STATE, 1 p.m.
Nov. 4 *at Nebraska, 1 p.m.
Nov. 11 *KANSAS STATE, 1 p.m.
Nov. 18 *at Missouri, 1 p.m.

OHIO (1-1)

Aug. 31 at Iowa State, L, 21-36
Sept. 9 ILLINOIS STATE, W, 14-6
Sept. 16 *KENT, noon
Sept. 23 *at Eastern Michigan, 5 p.m.
Sept. 30 at North Carolina, 12:30 p.m.
Oct. 14 *WESTERN MICHIGAN, 1 p.m.
Oct. 21 *at Akron, 5 p.m.
Oct. 28 *BALL STATE, 1 p.m.
Nov. 4 *at Bowling Green, noon
Nov. 11 *MIAMI of Ohio, noon
Nov. 18 *at Toledo, 3:30 p.m.

TCU (1-0)

Sept. 9 IOWA STATE, W, 27-10
Sept. 14 at Kansas, 7 p.m.
Sept. 23 at Vanderbilt, 7 p.m.
Oct. 7 *HOUSTON, noon
Oct. 14 *at Rice, noon
Oct. 21 *TULANE, 2 p.m.
Oct. 28 *at Baylor, 1 p.m.
Nov. 4 *SMU, 2 p.m.
Nov. 11 *at Texas Tech, 1 p.m.
Nov. 18 *at Texas, 1 p.m.
Nov. 25 *TEXAS A&M, 2 p.m.

Iowa (1-0)

Sept. 9 NORTHERN IOWA, W, 34-13
Sept. 16 at Iowa State, noon
Sept. 30 NEW MEXICO ST., 1:05 p.m.
Oct. 7 *at Michigan St., 12:05 p.m.
Oct. 14 *INDIANA, 1:05 p.m.
Oct. 21 *PENN STATE, 1:05 p.m.
Oct. 28 *at Ohio State, 12:30 p.m.
Nov. 4 *ILLINOIS, 1:05 p.m.
Nov. 11 *at Northwestern, 1:05 p.m.
Nov. 18 *at Wisconsin, 1:05 p.m.
Nov. 25 *MINNESOTA, 1:05 p.m.

UNLV (1-1)

Sept. 2 at Rice, L, 0-38
Sept. 9 ARKANSAS STATE, W, 28-23
Sept. 16 at Eastern Michigan, 5 p.m.
Sept. 23 at Iowa State, 1 p.m.
Sept. 30 HAWAII, 9 p.m.
Oct. 7 at Northern Illinois, 3 p.m.
Oct. 14 *at San Jose State, 3:30 p.m.
Oct. 28 *at Nevada-Reno, 3 p.m.
Nov. 4 NORTH TEXAS, 3 p.m.
Nov. 11 *UTAH STATE, 3 p.m.
Nov. 18 *NEW MEXICO STATE, 3 p.m.

OKLAHOMA (1-0)

Sept. 9 SAN DIEGO STATE, W, 38-22
Sept. 16 S. METHODIST, 1:30 p.m.
Sept. 23 NORTH TEXAS, 1:30 p.m.
Sept. 30 *COLORADO, 7:45 p.m.
Oct. 7 *at Iowa State, 1 p.m.
Oct. 14 at Texas, 2 p.m.
Oct. 21 *KANSAS, 1 p.m.
Oct. 28 *at Missouri, 1 p.m.
Nov. 4 *at Kansas State, 1:10 p.m.
Nov. 11 *OKLAHOMA STATE, 1 p.m.
Nov. 24 *at Nebraska, 1:30 p.m.

KANSAS (2-0)

Sept. 2 CINCINNATI, W, 23-18
Sept. 9 at North Texas, W, 27-10
Sept. 14 TCU, 7 p.m.
Sept. 23 HOUSTON, 1 p.m.
Oct. 7 *at Colorado, 1 p.m.
Oct. 14 *IOWA STATE, 1 p.m.
Oct. 21 *at Oklahoma, 1 p.m.
Oct. 28 *at Kansas State, 12:10 p.m.
Nov. 4 *MISSOURI, 1 p.m.
Nov. 11 *NEBRASKA, 1 p.m.
Nov. 18 *at Oklahoma State, 2 p.m.

COLORADO (2-0)

Sept. 2 at Wisconsin, W, 43-7
Sept. 9 COLORADO ST., W, 42-14
Sept. 16 NE LOUISIANA, 1:10 p.m.
Sept. 23 TEXAS A&M, 2:30 p.m.
Sept. 30 *at Oklahoma, 7:45 p.m.
Oct. 7 *KANSAS, 1:10 p.m.
Oct. 21 *at Iowa State, noon
Oct. 28 *NEBRASKA, TBA
Nov. 4 *at Oklahoma State, 3 p.m.
Nov. 11 *MISSOURI, 1:10 p.m.
Nov. 18 *at Kansas State, 2:10 p.m.

OKLAHOMA STATE (0-2)

Aug. 31 *NEBRASKA, L, 21-64
Sept. 9 at Tulsa, L, 23-24
Sept. 16 SW MISSOURI, 6 p.m.
Sept. 30 at Tennessee, 3 p.m.
Oct. 14 *KANSAS STATE, 2 p.m.
Oct. 21 *at Missouri, 1 p.m.
Oct. 28 *at Iowa State, 1 p.m.
Nov. 4 *COLORADO, 2 p.m.
Nov. 11 *at Oklahoma, 1 p.m.
Nov. 18 *KANSAS, 2 p.m.
Dec. 2 at Hawaii, 11 p.m.

NEBRASKA (2-0)

Aug. 31 *at Oklahoma State, W, 64-21
Sept. 9 at Michigan State, W, 50-10
Sept. 16 ARIZONA STATE, 1 p.m.
Sept. 23 PACIFIC, 1 p.m.
Sept. 30 WASHINGTON ST., 1 p.m.
Oct. 14 *MISSOURI, 1 p.m.
Oct. 21 *KANSAS STATE, 1 p.m.
Oct. 28 *at Colorado, TBA
Nov. 4 *IOWA STATE, 1 p.m.
Nov. 11 *at Kansas, 1 p.m.
Nov. 24 *OKLAHOMA, 1:30 p.m.

KANSAS STATE (2-0)

Sept. 2 TEMPLE, W, 34-7
Sept. 9 at Cincinnati, W, 23-21
Sept. 23 AKRON, 6:10 p.m.
Sept. 30 N. ILLINOIS, 1:10 p.m.
Oct. 7 *MISSOURI, 1:10 p.m.
Oct. 14 *at Oklahoma State, 2 p.m.
Oct. 21 *at Nebraska, 1 p.m.
Oct. 28 *KANSAS, 12:10 p.m.
Nov. 4 *OKLAHOMA, 1:10 p.m.
Nov. 11 *at Iowa State, 1 p.m.
Nov. 18 *COLORADO, 1:10 p.m.

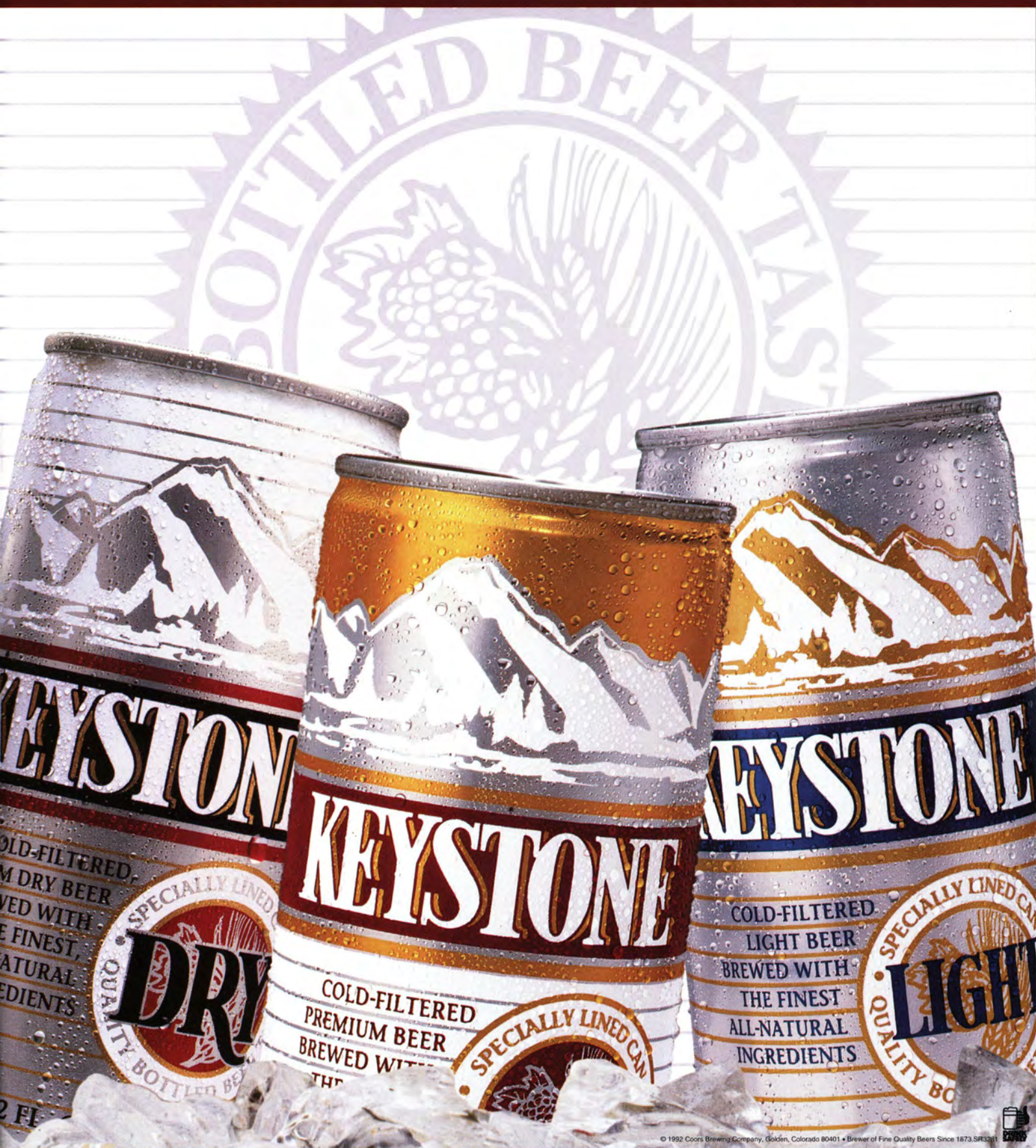
MISSOURI (1-1)

Sept. 2 NORTH TEXAS, W, 28-7
Sept. 9 BOWLING GREEN, L, 10-17
Sept. 16 at Texas Tech, 6:30 p.m.
Sept. 23 NE LOUISIANA, 1 p.m.
Oct. 7 *at Kansas State, 1:10 p.m.
Oct. 14 *at Nebraska, 1 p.m.
Oct. 21 *OKLAHOMA STATE, 1 p.m.
Oct. 28 *OKLAHOMA, 1 p.m.
Nov. 4 *at Kansas, 1 p.m.
Nov. 11 *at Colorado, 1:10 p.m.
Nov. 18 *IOWA STATE, 1 p.m.

IOWA STATE CYCLONES

- 1 Mike Brantley WR, 6-1, 176
Fr. Long Island, N.Y. (Sachem)
- 2 Kelvin Moore OLB, 6-2, 205
Jr. Los Angeles, Calif. (Santa Monica CC)
- 3 Jeff St. Clair* QB, 6-1, 194
Jr. Bettendorf, Iowa (Pleasant Valley)
- 5 Jahi Arnold* TB, 5-7, 174
So.# Downey, Calif. (Downey)
- 6 Graston Norris** TB, 5-9, 182
Jr.# Houston, Texas (Madison)
- 7 Todd Doxzon** QB, 6-1, 185
Jr. Omaha, Neb. (Millard North)
- 8 Greg Boyd OLB, 6-1, 213
Jr.# Lincoln Park, Mich. (Lincoln Park)
- 9 James Henderson OLB, 6-0, 203
Jr.# Los Angeles, Calif. (WLA CC/Dorsey)
- 10 Damian Brown TB, 5-11, 176
Fr. Aurora, Colo. (Eaglecrest)
- 11 Matt Straight** SS, 6-0, 194
Sr.# Logan, Iowa (Logan-Magnolia)
- 12 Corey Lambert QB, 5-10, 200
Fr.# Marrero, La. (John Ehret)
- 13 Kevin Hudson FS, 6-0, 168
So. Miami, Fla. (South Dade)
- 13 Josh Yates WR, 5-9, 165
So. Lake Forest, Ill. (Marmion Military)
- 14 Dawan Anderson DB, 5-8, 156
Fr.# Hazelcrest, Ill. (Hillcrest)
- 15 Robby Duncan QB, 6-1, 178
So.# Kenner, La. (John Curtis)
- 15 Zak Kimble P, 6-2, 170
Fr. Urbandale, Iowa (Urbandale)
- 16 Marc Harris** P, 5-11, 197
Jr. Omaha, Neb. (Millard North)
- 17 Todd Bandhauer QB, 6-4, 215
Fr. Lecanto, Fla. (Lecanto)
- 18 John Dillon PK, 6-1, 181
So.# Burlington, Iowa (Burlington)
- 19 Kemp Knighten DB, 6-0, 189
So. Hialeah, Fla. (Miami Lakes)
- 20 Mike Lincavage** FS, 6-1, 193
Jr.# Chatsworth, Calif. (Montclair Prep)
- 21 Robert Schneider SS, 6-0, 172
Fr.# Solon, Iowa (Solon)
- 22 Rodney Guggenheim** FB, 5-10, 217
Jr. Kenner, La. (John Curtis)
- 23 Jason Brown** DB, 5-10, 185
Jr.# Chicago, Ill. (Steinmetz)
- 24 Joe Foss LB, 6-0, 220
Fr. Ogden, Iowa (Ogden)
- 25 Kevin Wilson CB, 6-0, 170
Fr. North Canton, Ohio (Hoover)
- 26 Chin Achebe DE, 6-3, 225
Fr. Steubenville, Ohio (Central Catholic)
- 27 Daryl Hall** DB, 5-8, 175
Jr.# Florissant, Mo. (Hazelwood Central)
- 28 Troy Davis* TB, 5-8, 185
So. Miami, Fla. (Southridge)
- 29 Jason Bales FB, 6-0, 225
So.# Hinton, Iowa (Hinton)
- 31 Tracy Williams SS, 6-1, 210
So.# Spring, Texas (Klein)
- 32 Preston Rhamy* DB, 5-8, 179
So.# Avoca, Iowa (AST)
- 34 Angelo Provenza* ILB, 6-0, 207
Sr.# Aurora, Colo. (Smoky Hill)
- 36 James Elmore ILB, 6-3, 225
Fr. Smithtown, N.Y. (Smithtown)
- 37 Michael O'Brien WR, 5-11, 183
Fr.# Metairie, La. (Rummel)
- 38 Michael Cooper* ILB, 6-1, 201
So.# Omaha, Neb. (Westside)
- 39 Eric Martin* ILB, 6-0, 224
So.# Cedar Rapids, Iowa (Kennedy)
- 40 Tim Sanders** ILB, 6-0, 211
Jr.# Chicago, Ill. (Weber)
- 41 Clint Thomas** ILB, 6-3, 230
Jr.# Rock Port, Mo. (Rock Port)
- 41 Cameron Gregg OLB, 6-3, 218
Fr. Hawarden, Iowa (West Sioux)
- 42 Joe Parmentier FB, 6-0, 220
Fr. Lindenhurst, N.Y. (Lindenhurst)
- 43 Hez Jackson FB, 6-0, 235
Fr. Tampa, Fla. (Jesusit)
- 44 B.J. Spyksma** DE, 6-3, 252
Sr.# Grimes, Iowa (Dallas Center-Grimes)
- 45 Jamie Kohl PK, 6-0, 175
Fr. Waukesha, Wis. (Catholic Memorial)
- 46 Chuck Della Vella OLB, 6-3, 215
Fr. Cleveland, Ohio (St. Ignatius)
- 47 Rob Harken TE, 6-4, 220
Fr. Waverly, Iowa (Waverly-Shellrock)
- 48 Dave Brcka LB, 6-3, 215
Fr. West Des Moines, Iowa (Valley)
- 49 Brandon Rutledge DB, 6-0, 190
Fr. Tama, Iowa (South Tama County)
- 50 Kipwana "Kip" King ILB, 6-0, 219
Fr.# Fort Worth, Texas (Arlington Heights)
- 51 Byron Heitz* OL, 6-5, 295
Sr.# Farley, Iowa (Western Dubuque)
- 52 Chris Brunsold OL, 6-3, 290
So. Forest City, Iowa (Waldorf JC)
- 52 Aaron Schultze OL, 6-5, 220
Fr. Dunnell, Minn. (Fairmont)
- 53 Corey Stevenson DL, 6-1, 270
Fr. Waterloo, Iowa (Columbus)
- 54 Andre Lee LB, 6-1, 220
Fr. Chicago, Ill. (Simeon)
- 55 Terry Thomas DL, 6-3, 270
Fr. Flint, Mich. (Northern)
- 56 Mike Sakalas* OL, 6-3, 289
Jr.# Warren, Mich. (St. Clement)
- 59 Chad Casavant OL, 6-5, 225
Fr. Freeport, Ill. (Freeport)
- 59 Jason Weite DE, 6-4, 225
Fr. Ottumwa, Iowa (Ottumwa)
- 60 Mark Konopka** OL, 6-1, 293
Sr.# Sterling Heights, Mich. (Warren)
- 61 Jason Putz** DL, 6-3, 255
Sr.# Farley, Iowa (Western Dubuque)
- 61 T.J. Tuetken OL, 6-4, 255
Fr. Monticello, Iowa (Monticello)
- 62 Joe Cominsky OL, 6-5, 230
Fr. Rayland, Ohio (Buckeye-Local)
- 63 Dale Rowley** TE/DS, 6-0, 219
Sr.# Knoxville, Iowa (Knoxville)
- 64 Erol Arkan OL, 6-8, 292
Fr. McMurray, Pa. (Peters Township)
- 65 Patrick Augafa OL, 6-3, 330
Jr. Anchorage, Alaska (Ricks JC)
- 66 Doug Easley OL, 6-3, 272
Jr.# Earlham, Iowa (Earlham/Dana)
- 67 Paul Skartvedt* OL, 6-2, 257
Jr.# Radcliffe, Iowa (Hubbard-Radcliffe)
- 68 Eddie Shufford OL, 6-1, 253
So.# Gary, Ind. (Westside)
- 69 Nathan Jorgenson OL, 6-3, 269
Fr.# Johnston, Iowa (Johnston)
- 70 Chad Billings OL, 6-1, 248
So.# Clear Lake, Iowa (Clear Lake)
- 71 Kurt Levetzow DL, 6-6, 241
So.# Sabula, Iowa (East Central)
- 72 Bill Marsau DL, 6-6, 235
Fr. Hudson, Iowa (Hudson)
- 73 Marc Cortez OL, 6-3, 265
Fr. Tinley Park, Ill. (Andrew)
- 74 Jack Mitchell DL, 6-5, 245
Fr. Torrance, Calif. (Redondo Union)
- 75 Matt Rahfaldt* OL, 6-4, 270
So.# Ames, Iowa (Ames)
- 76 Jim Tuso OL, 6-3, 270
Fr.# Kansas City, Mo. (Rockhurst)
- 77 Tim Kohn** OL, 6-5, 294
Jr.# Wadsworth, Ill. (Warren Township)
- 78 Grant Everett OL, 6-3, 258
Fr.# Dugald, Manitoba (U. of Winnipeg)
- 79 Charlie Bogwill OL, 6-2, 290
Fr.# Morris, Ill. (Morris)
- 80 Jerome Henry WR, 6-1, 172
So.# Los Angeles, Calif. (Loyola)
- 81 Ed Williams* WR, 6-3, 193
So.# Opa-Locka, Fla. (Hialeah)
- 82 Dan Rowley WR, 5-10, 180
Fr. Knoxville, Iowa (Knoxville)
- 83 Gerrick Bivins WR, 6-0, 153
So.# Scott AFB, Ill. (Knob Noster)
- 84 Mitch Brocato TE, 6-3, 219
Fr.# Pearl River, La. (Pearl River)
- 85 Tom Radke WR, 5-11, 172
So.# Aurelia, Iowa (Aurelia)
- 86 Mike Hansen TE, 6-3, 225
Fr. Omaha, Neb. (Millard North)
- 87 Dennis DiBiase* TE, 6-2, 232
Jr.# Joliet, Ill. (St. Charles)
- 88 Mike Horacek** WR, 6-2, 198
Sr.# Omaha, Neb. (Benson)
- 89 Damian Gibson TE, 6-4, 224
Fr.# Marathon, Fla. (Marathon)
- 90 Greg Schoon DL, 6-4, 263
So.# Sioux Rapids, Iowa (Sioux Central)
- 91 Sheldon Napastuk** DL, 6-5, 263
Jr.# N. Battleford, Sask. (N. Battleford)
- 92 Oliver Ross DE, 6-6, 245
Jr. Los Angeles, Calif. (Wash. Prep/SW CC)
- 93 Matt Rysavy TE, 6-2, 223
So.# Omaha, Neb. (Westside)
- 94 Alphonso Carter DL, 6-0, 254
Fr.# Scarborough, Ont. (West Hill)
- 96 Kyle Pelecky TE, 6-3, 201
Fr.# Bettendorf, Iowa (Pleasant Valley)
- 97 Rudy Ruffolo DL, 6-4, 248
So.# Kenosha, Wis. (Tremper)
- 98 Kevin Fleecs* DL, 6-4, 251
Sr.# Hershey, Neb. (Hershey)
- 99 Bryan Guill DE, 6-3, 240
So.# Council Bluffs, Iowa (Lewis Central)

Wouldn't It Be Great...



© 1992 Coors Brewing Company, Golden, Colorado 80401 • Brewer of Fine Quality Beers Since 1873. SR3381

BOTTLED BEER TASTE IN A CAN™

THE NORWEST 24-HOUR LOAN EXPRESS MAKES GETTING A LOAN AS EASY AS...



*Dial 1-800-2-NORWEST,
24 hours a day!*



*Answer a few questions, get
an answer in an hour or less.*



*Your loan check will be mailed
within 24 hours of approval.*

Need a loan? Pick up the phone. No trips to the bank. No long forms to fill out.
And with the Norwest 24-Hour Loan Express, your loan check will arrive in the mail!

It's just that simple and convenient when you dial 1-800-2-NORWEST.

(Subject to qualified credit. Loan checks mailed only on unsecured loans. Apply for a loan after 5 p.m. or on weekends, and receive an answer by 10 a.m. the next business morning.)

24-HOUR
LOAN EXPRESS **1-800-2-NORWEST**



© 1995 Norwest Bank Iowa, N.A. Member FDIC Equal Opportunity Lender

