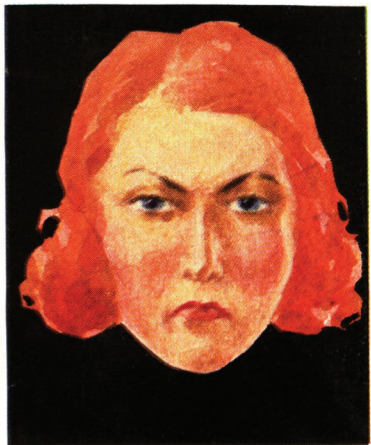
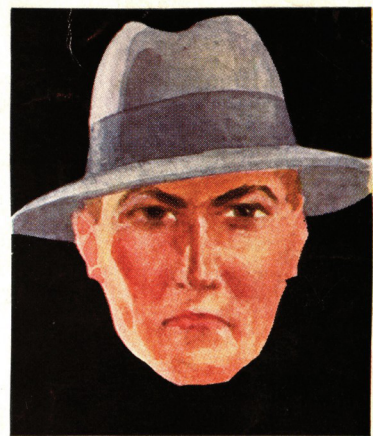


IOWA vs. IOWA STATE



S. BRODER





IOWA STATE FANS ARE ALWAYS

*Welcome*

WHEN IN DES MOINES

AT

**L. H. KURTZ Co.**

312-314 WALNUT

*Visit our Hardware and  
Plumbing Show Rooms*

*See the Latest Plumbing Fixtures  
and Hardware Before You Build*



If you're going hunting or fishing we have the most complete stock in Iowa from which to make your selection » »

**LET US EQUIP YOU**

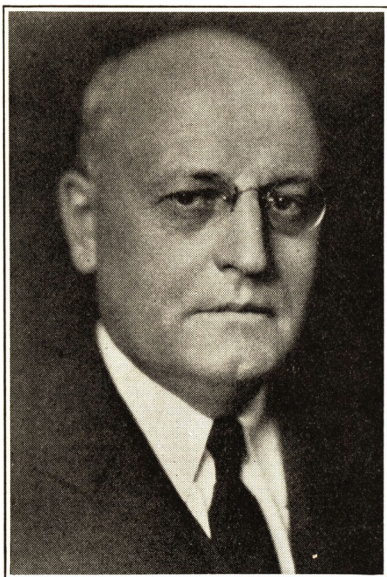




GEORGE T. BAKER

George T. Baker has been at the head of the Iowa board of education for the past ten years. The board, under the direction of Mr. Baker, has charge of all affairs at both the State University and the State College. Mr. Baker, and many other state notables, will be the guests of the two state schools at today's football game.





EUGENE A. GILMORE

I can think of no more suitable message than to paraphrase from Shakespeare: Let us strive mightily as adversaries on the football field but dine together as friends. Real sportsmanship in athletics as well as in all other academic activities should cement the bonds of friendship between the two institutions in which we all have a deep and loyal interest.

EUGENE ALLEN GILMORE,  
*President, State University of Iowa.*

## HAWKEYES

It is a pleasure for the University of Iowa to be the guests of Iowa State College at Ames today. We trust that our football contest this afternoon will reflect the fine spirit of manliness and chivalry of the fine young men of these two institutions, of which the state is so justly proud.

We wish the finest luck and good wishes to the men of Iowa State College and are looking forward to further meetings of this kind, in the hope that we might further cement the friendship existing between these two great institutions.

Sincerely,

O. M. SOLEM,  
*Director of Athletics.*



OSSIE M. SOLEM



I am very glad to have this opportunity to welcome to our campus the members of the football team, the students, and alumni of the University of Iowa who are here today.

The interests of the University and State College are closely knit together. Through teaching and research both are striving to serve the State of Iowa. The value of our teaching and the quality of our research depend in no small degree on the determination and courage of the men and women who attend these two institutions. There is no place where courage and determination are more effectively developed than on the athletic field.

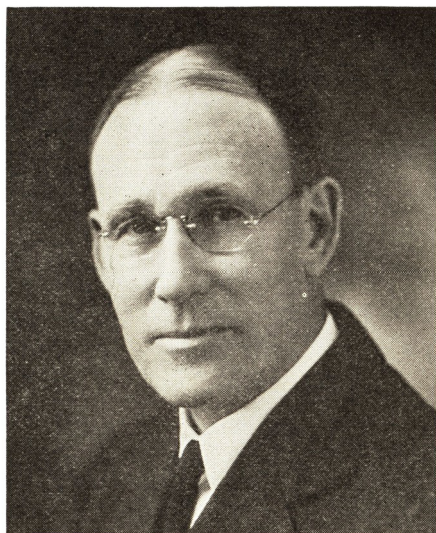
It is my firm conviction that we must continue to provide adequate facilities and trained staffs for those engaging in sports. The active participation in sports, both intramural and intercollegiate, should continue to be an important part in the activities of the man and women attending both of these institutions.

With my very cordial greetings and trusting that this day at Iowa State will be enjoyable, I remain

Sincerely yours,

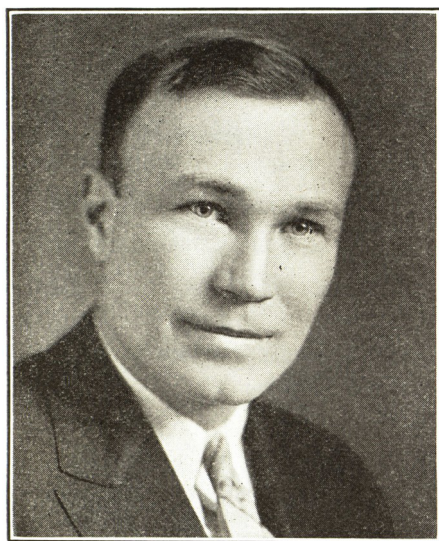
R. M. HUGHES,

*President, Iowa State College.*



R. M. HUGHES

## CYCLONES



GEO. F. VEENKER

The Iowa State College Athletic Staff and members of the football team are happy to welcome the staff and players of the State University as our guests today. The fine spirit of our game last year will be in evidence again this afternoon, building a lasting friendship and mutual respect.

This fine crowd in attendance, as friends of each and both institutions, will be very proud of the fine manhood represented on State Field today by their own State Colleges.

GEO. F. VEENKER,  
*Director of Athletics.*



# JOSTEN'S

TREASURE-CRAFT JEWELERS

*School Jewelry, Medals, Trophies  
Diplomas, Invitations*

FACTORY: OWATONNA, MINN.

DIVISION OFFICES

CLEVELAND  
627 UNION TRUST BLDG.

OMAHA  
316 So. 50TH ST.

CHICAGO  
235 EAST ONTARIO ST.

WICHITA  
405 SCHWEITER BLDG.

PITTSBURGH  
933-35-B UNION TRUST BLDG.



*Most Comfortable and Convenient*

## The MID-CONTINENT SPECIAL

Between

**MINNEAPOLIS - ST. PAUL  
DES MOINES and KANSAS CITY**

**Other Fine Fast Trains Daily**

### Southbound

5:00 p. m.	10:40 p. m.
5:40 p. m.	11:20 p. m.
12:30 a. m.	7:10 a. m.
12:50 a. m.	7:35 a. m.
7:30 a. m.	1:30 p. m.

Lv. Minneapolis	Ar.
Lv. St. Paul	Ar.
Ar. Des Moines	Lv.
Lv. Des Moines	Ar.
Ar. Kansas City	Lv.

### Northbound

8:00 a. m.	2:50 p. m.
7:15 a. m.	2:00 p. m.
11:45 p. m.	7:05 a. m.
11:25 p. m.	6:40 a. m.
5:45 p. m.	11:59 p. m.

**Lounge — Dining — Pullmans**

On The Mid-Continent Special

Complete travel service in a single car. Every facility right at hand.

*Ask for reservations on your next trip North or South*

C. C. GARDNER, General Agent Passenger Department, Rock Island Lines  
721 Locust St., Des Moines, Iowa

1688

# ROCK ISLAND



# THE "LOW-DOWN" ON TODAY'S GAME

From all advance indications, it is very likely that two of the most powerful football teams in the entire mid-west are battling today on State Field for state supremacy.

The Hawkeyes and the Cyclones are not only rated at the top of the Iowa aggregations, but both elevens are considered tough opposition for any football team in the Corn Belt.

The 1934 edition of Ossie Solem started the season by swamping South Dakota 34-0. A good Northwestern University team was thoroughly trounced by the Hawks to the tune of a 20-7 score, and Nebraska, playing in their own back yard, was barely able to nose out a 14-13 decision over Iowa.

In all of their games to date, the play of the University team has been characterized by the splendid ball carrying of Oze Simmons, probably the most highly touted sophomore of the year, and Dick Crayne, the veteran full-back from Fairfield. Simmons, a colored boy, literally ran rough shod over

Dick Hanley's Wildcats. He is a 9.9 second dash man, very shifty, and a hard runner. He is the type of game breaker that Red Grange was in his hey-day. A tight, hard fought battle, can easily become a rout when this Texas lad enters the game.

Less spectacular, but the most reliable man the Hawks have, is Dick Crayne, who dashed through the Cyclones so devastatingly last year. He is a 190-pounder and very fast despite his bulk. He does the major share of Iowa's punting and passing. So much has been written about these two Iowa backs that most fans have probably forgotten the names of Capt. Russ Fisher and Dwight Hoover, the dependable blockers who clear would be tacklers out of the ball carrier's path.

They are just as important to the offense as either Simmons or Crayne. The Iowa line has been exceedingly potent both on offense and defense. Some of the standouts on the forward wall include Ted Osmaloski, center, Bill Seel

## 1934 ? ? ?

1894	Iowa State 16; Iowa 8
1895	Iowa State 24; Iowa 0
1897	Iowa State 6; Iowa 0
1899	Iowa State 0; Iowa 5
1901	Iowa State 0; Iowa 12
1902	Iowa State 6; Iowa 12
1904	Iowa State 6; Iowa 10
1905	Iowa State 0; Iowa 8
1906	Iowa State 2; Iowa 0
1907	Iowa State 20; Iowa 14
1909	Iowa State 0; Iowa 16
1910	Iowa State 0; Iowa 2
1911	Iowa State 9; Iowa 0
1912	Iowa State 7; Iowa 20
1913	Iowa State 7; Iowa 45
1914	Iowa State 6; Iowa 26
1915	Iowa State 16; Iowa 0
1916	Iowa State 16; Iowa 19
1917	Iowa State 3; Iowa 6
1918	Iowa State 0; Iowa 21
1919	Iowa State 0; Iowa 10
1920	Iowa State 10; Iowa 14
1933	Iowa State 7; Iowa 27
1934	? ? ? ? ? ? ?

Iowa 31 " 6

(Continued on page 19)



# IOWA UNIVERSITY STARS



**OZE SIMMONS**  
SHIFTY - FOOTED SOPHOMORE WHO CAN DODGE OR OUTRUN MANY TACKLERS.



**TED OSMALOSKI**  
SOPHOMORE  
CENTER



**DICK CRAYNE**  
CAN HE EXCELL HIS 1933 RECORD OF 4 YARDS PER TRIAL, 40 YARDS PER PUNT, AND 42 POINTS?



**JACK GALLAGHER**  
VETERAN GUARD



**HOOVER**  
Half Back



**WALKER**  
End



**FOSTER**  
Tackle



GO IOWA STATE!  
GO IOWA!



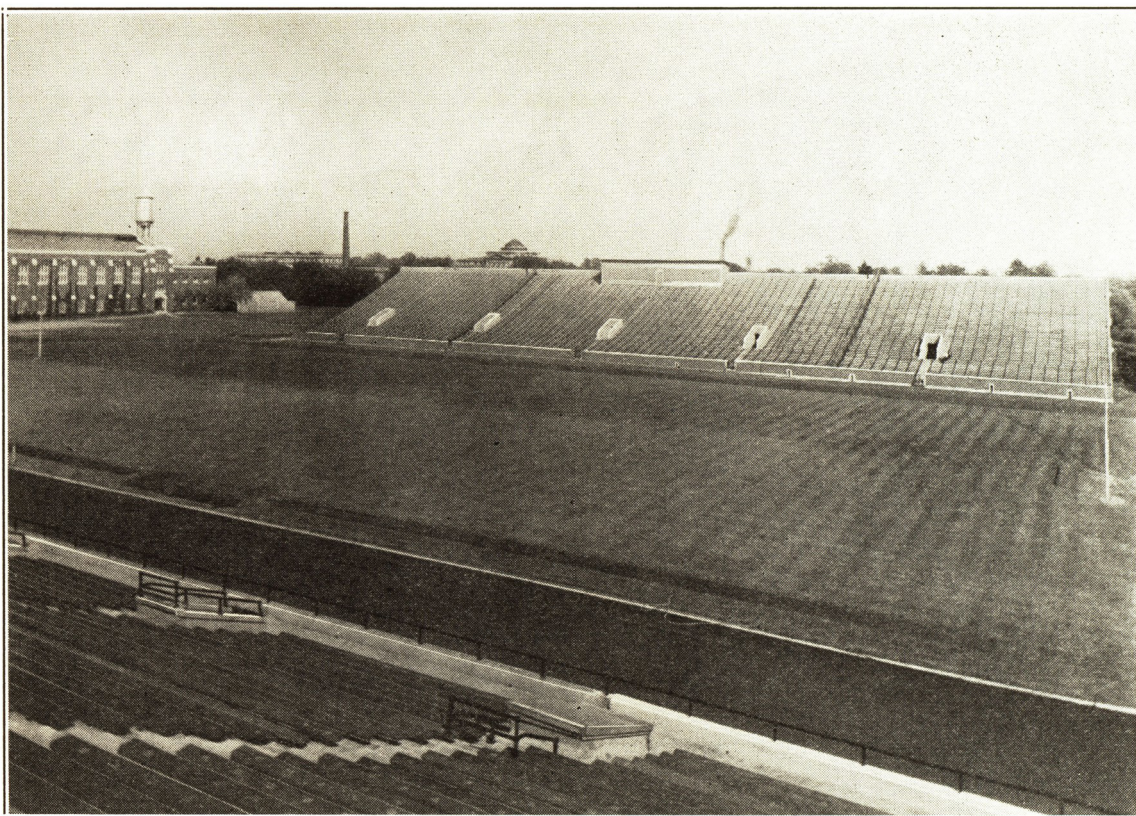
*All Iowa Has Gone*  
KIRKWOOD



DES MOINES'  
MOST POPULAR  
HOTEL

*Come to the PINK ELEPHANT CLUB*  
*Music From 9:30 On*





## *The State Field Gridiron Turf*

PICTURED ABOVE WAS FED

## **RATH'S PLANT FOOD**

Look at it's dark green color and how it stands the terrific strain and abuse given it by the football players.

Use Rath's Plant Food on your lawn.

Ask Iowa State Athletic officials about RATH'S PLANT FOOD.

## **The Rath Packing Co., Waterloo, Iowa**



# CYCLONE BOOSTERS



THE FOLLOWING AMES MERCHANTS ARE BOOSTERS OF  
THE 1934 CYCLONE FOOTBALL TEAM AND HAVE  
HELPED MAKE THIS PROGRAM POSSIBLE



ALLEN MOTOR COMPANY

AMES GRAIN & COAL COMPANY

AMES TRUST & SAVINGS BANK

BAUGE SHOE COMPANY

BRANNBERG & ALM

CARR HARDWARE COMPANY

CARTER PRESS

COLLEGE SAVINGS BANK

DUDGEON, G. W.

FAIR STORE

HANSON LUMBER COMPANY

JAMESON'S TWO STORES

JUDISCH BROTHERS

KIMLER COAL & ICE COMPANY

LINCOLN CANDY KITCHEN

LINCOLN WAY PHARMACY

MARTIN & CASWELL CLOTHING STORE

MOORE BROTHERS DAIRY

MUNN LUMBER COMPANY

NUTTY, W. H., GARAGE

OLMSTEAD COLLEGE SHOP

O'NEIL DAIRY COMPANY

PALMER PLUMBING COMPANY

STUDENT SUPPLY STORE

TILDEN MANUFACTURING COMPANY

TILDEN STORE COMPANY

TRIBUNE PUBLISHING COMPANY

TRUEBLOOD'S COLLEGE SHOE STORE

UNION STORY TRUST AND SAVINGS BANK



FRED POOLE



# IOWA STATE CYCLONES

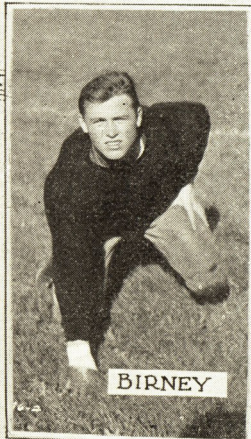
1934



GUSTINE



GUTE



BIRNEY



HOOD



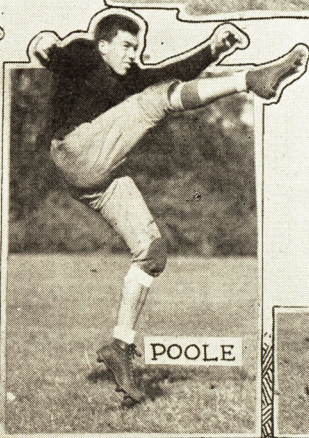
COUNDIFF



WINTER



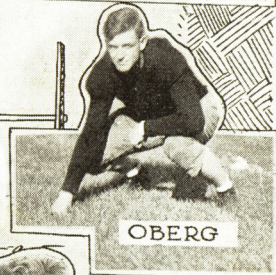
AMES



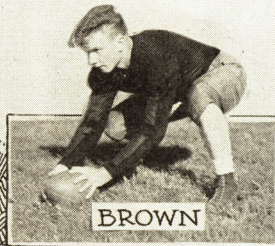
POOLE



SCHAFROTH



OBERG



BROWN



GREFE



# IOWA STATE SQUAD

## CLARENCE GUSTINE, No. 54

170-pound sophomore end. Home—Menville, Iowa. Won baseball numeral, but newcomer to football squad. Been developing fast. An excellent pass receiver.

## RUSSELL GUTE, No. 27

175-pound senior guard. Home, Glidden, Iowa. Won minor letter last year. Forcing regulars to limit to hold their positions. Played a bang-up game against Iowa last fall.

## HAROLD BIRNEY, No. 63

185-pound sophomore fullback. Home, DeWitt, Iowa. Understudy for Allender. One of fastest men on squad. A good tackler and blocker. Should develop fast.

## FRANK HOOD, No. 34

205-pound senior end. Home, Creston, Iowa. Heaviest man on first team. Lettered last year in his first year of football. A good pass receiver, and a good defensive man. Captain of this year's basketball team.

## RUSSELL COUNIFF, No. 59

185-pound sophomore guard. Home, Gary, Ind. One of the sophomores on first string. One of fastest men on squad. A good blocker and defensive man.

## WILBUR WINTER, No. 57

167-pound senior halfback. Home, Alden, Iowa. Shifted to halfback after quarterbacking for two years. A shifty ball carrier and a good blocker.

## MARVIN OBERG, No. 38

194-pound sophomore tackle. Home, Fremont, Nebr. A transfer from Midland College. Although his first year, he is one of the oldest men on roster. Steady and reliable.

## KENNETH AMES, No. 69

180-pound junior. Home, Peoria, Ill. Won minor letter in '32 as backfield man, but shifted to end in '34. Out of school in '33. Very fast, and a good defensive man. Can punt capably when called on.

## FRED POOLE, No. 52

183-pound sophomore end. Home, Ames, Iowa. Has a real educated toe. The best punter on squad and a capable passer. Is a real asset to Cyclone squad.

## HUNTER BROWN, No. 33

170-pound sophomore center. Home, Red Oak, Iowa. A transfer from Tarkio College. Passes ball nicely, and is a standout on defense. Getting starting call at center regularly.

## HAROLD SCHAFROTH, No. 36

198-pound sophomore tackle. Home, Des Moines, Iowa. Brother of Ed Schafroth, letter-winner for last three years. One of the scrappiest of new men. Also won awards in basketball and baseball.

## DONALD GREFE, No. 39

190-pound junior end. Home, Ames, Iowa. Brother of Dick Grefe, Cyclone star of two years ago. Out of school last year, but letter winner in '32. A good defensive man.



# As thousands



## IOWA STATE

L.E.	L.T.	L.G.	C.	R.G.	R.T.	R.E.
Hood	Schafroth	Hayes	Brown	Berger	Catron	Poole
34	36	56	33	73	31	52

L.H.B.  
Williams  
71

Q.B.  
Miller  
23

R.H.B.  
Theophilus (C.)  
61

F.B.  
Allender  
21

### SQUAD

21 *Allender (F.B.)	35 Hanna (C.)	57 *Winter (H.B.)
22 *Harlan (H.B.)	36 Schafroth (T.)	58 Brisbin (H.B.)
23 *Miller (Q.B.)	38 Oberg (T.)	59 Coundiff (G.)
24 *Garner (C.)	39 *Grefe (E.)	60 Blumenstein (G.)
25 Neal (Q.B.)	43 Loyd (T.)	61 *Capt. Theophilus (H.B.)
27 Gute (G.)	44 Monlux (T.)	63 Birney (F.B.)
28 Kroeger (E.)	51 Borg (C.)	66 Maulsby (H.B.)
30 Fitch (E.)	52 Poole (E.)	69 Ames (E.)
31 *Catron (T.)	53 Peck (E.)	71 *Williams (H.B.)
32 Norgordt (T.)	54 Gustine (E.)	73 *Berger (G.)
33 Brown (C.)	56 *Hayes (G.)	99 Massa (E.)
34 *Hood (E.)		

\*Letter men.

### OFFICIALS

Referee	John S. Getchell (St. Thomas)
Umpire	Edward W. Cochran (Kalamazoo)
Field Judge	Ira T. Carrithers (Illinois)
Head Linesman	Sec Taylor (Wichita)

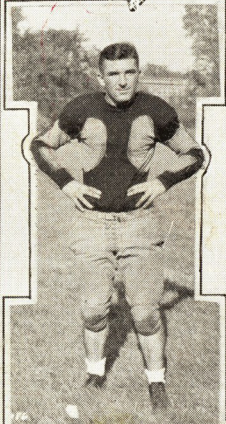


# -They!



1934

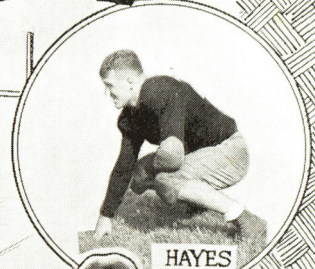
# IOWA STATE CYCLONES



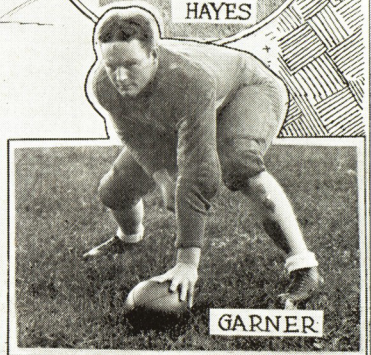
CAPT. THEOPHILUS



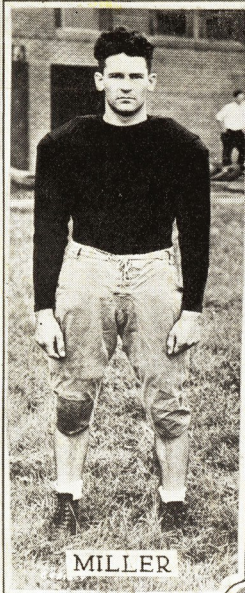
NEAL



HAYES



GARNER



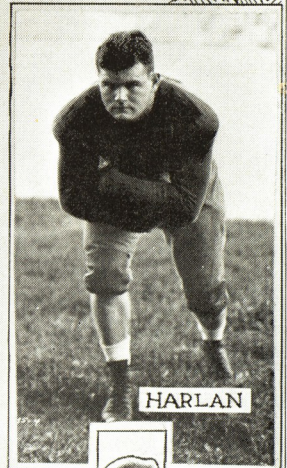
MILLER



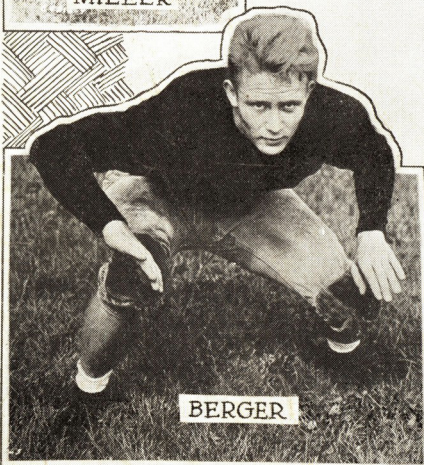
WILLIAMS



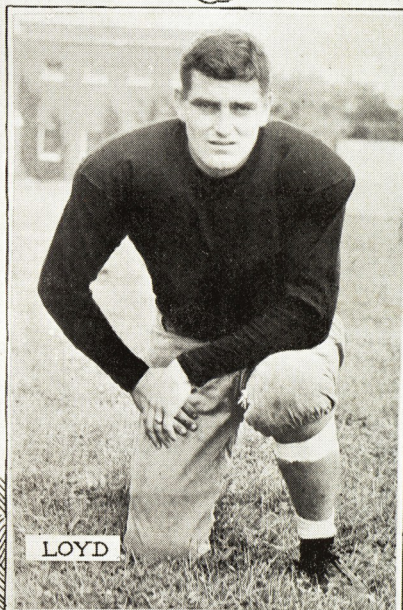
ALLENDER



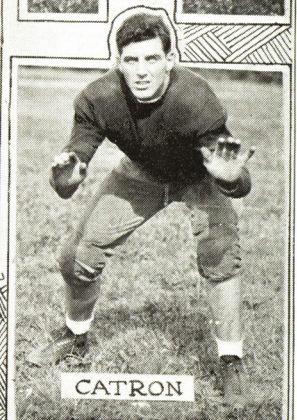
HARLAN



BERGER



LOYD



CATRON



# IOWA STATE SQUAD

## DONALD THEOPHILUS, No. 61

182-pound senior halfback. Home, Smithland, Iowa. Captain of this year's team. An All-State man in Nebraska during high school. A good blocker, and good defensive man. Can carry ball well on plunges.

## TOM NEAL, No. 25

158-pound sophomore quarterback. Home, Sioux City, Iowa. All-State high school man. A triple threat back, and rather unusual for a flashy ball carrier, he is the best blocker on the team.

## IKE HAYES, No. 56

158-pound junior guard. Home, Newcomers-town, Ohio. A watch-charm size, but a whole alarm clock in action. A good blocker and the other fellow is never any bigger. Quarterback as a prep.

## HAROLD MILLER, No. 23

150-pound senior quarterback. Home, Harris, Iowa. A transfer from the State Teachers. A heady field general, a good pass receiver, and one of the shiftiest ball carriers on the squad.

## MARLOWE WILLIAMS, No. 71

171-pound senior halfback. Home, Des Moines, Iowa. Regular halfback for last two years. Speedy, and a swell defensive man. One of the best pass receivers on squad.

## WILLIAM ALLENDER, No. 21

178-pound junior. Home, Atlantic, Iowa. Best ball-toter in Cyclone backfield. Leading ground

gainer of 1933. Is splendid passer and kicker. Showing improvement on defense.

## DWIGHT GARNER, No. 24

188-pound senior center. Home, Ida Grove, Iowa. Has lettered for two years at guard and center. Constant chatter makes him additionally useful.

## PAUL BERGER, No. 73

189-pound senior guard. Home, Manchester, Mo. A veteran of the Cyclone line for the past two years. Played in Denver's backfield all during that game last year. Weight star in track.

## VERNON LOYD, No. 43

208-pound senior tackle. Home, Ames, Iowa. A valuable reserve, but not quite a letter winner. Has started a few games, and experience will prove helpful.

## HOWARD HARLAN, No. 22

175-pound senior halfback. Home, Stuart, Iowa. Again understudying Capt. Theophilus, but a good back in his own right. One of the hardest tacklers on the Cyclone squad. Has won two letters.

## JOHN CATRON, No. 31

198-pound junior tackle. Home, Camp Crook, South Dakota. Has been included in the starting line-up quite a few times in past two years. Big and fast. Finalist in heavyweight division of National A.A.U. wrestling tournament last winter.



OVER  
**3000**  
 SCHOOLS AND UNIVERSITIES  
 ARE ENTHUSIASTIC  
 SEAL-O-SAN USERS

**BECAUSE** *Seal-O-San makes any wood floor 100% non-slippery, permitting a basket ball team to play better basket ball because of sure footing, its popularity has swept the country. Coaches everywhere are enthusiastic about it.*

But there are many other advantages of Seal-O-San. It makes a better looking floor, yet it costs much less than most floor treatments because *no skilled labor is required. It is as easy to apply Seal-O-San as it is to scrub the floor—but the results last for months longer. Seal-O-San decreases maintenance costs, for all that is required to keep the floor clean and beautiful after Seal-O-San is applied, is occasional mopping with a dustless mop. Seal-O-San is also an ideal floor treatment for class rooms and hallways, as its non-skid surface eliminates danger of accidents, and its low cost fits into present day school budgets.*

If you are a basket ball coach or school official, write for a copy of the Seal-O-San Chart Book and literature describing Seal-O-San.

We also manufacture Derma-San, the double strength disinfectant which helps you combat "Athlete's Foot," in showers, lockers and pool. *Write for samples.*

**HUNTINGTON LABORATORIES, Inc.**  
 HUNTINGTON, INDIANA

**SEAL-O-SAN**  
 MAKES FLOORS 100% NON SLIPPERY



**IOWA STATE**  
 Plays Better Basketball on  
 SEAL-O-SAN Floors

Iowa State University has used Seal-O-San on the gymnasium floor for several years. Many other Huntington products, liquid soaps, cleaning compounds, waxes, etc., are used throughout the institution.

**Over 3000 Schools are now  
 using Seal-O-San**

A few of the schools are: Union H. S., Phoenix, Ariz., High S., Little Rock, Ark., Union H. S. and Junior College, Tafts, Calif., H. S., St. Louis Park, Minn., William & Mary College, Normal U., Chadron, Nebr., Southwestern Louisiana College, Hammond, La., United Coast Guard Academy, New London, Conn., and the following Universities—Colorado, Iowa State, Indiana, Notre Dame, Purdue, Butler, Illinois, Kentucky, Chicago, Maryland, Michigan, Montana, Missouri, Miami, Nevada, Pittsburgh, Vanderbilt, Wisconsin and Rutgers.





# A Touch of Autumn in the Air

The brisk and bracing winds of the fall, enjoyable as they may be out-of-doors, have no place inside the home.

Autumn's chills and winter's blasts can be kept in their place—outside the home—by satisfactory fuels.

## PURITY Franklin County

A High-Quality, Moderate-Priced Coal, standard for many years in Ames.

## Glen Rogers Briquets

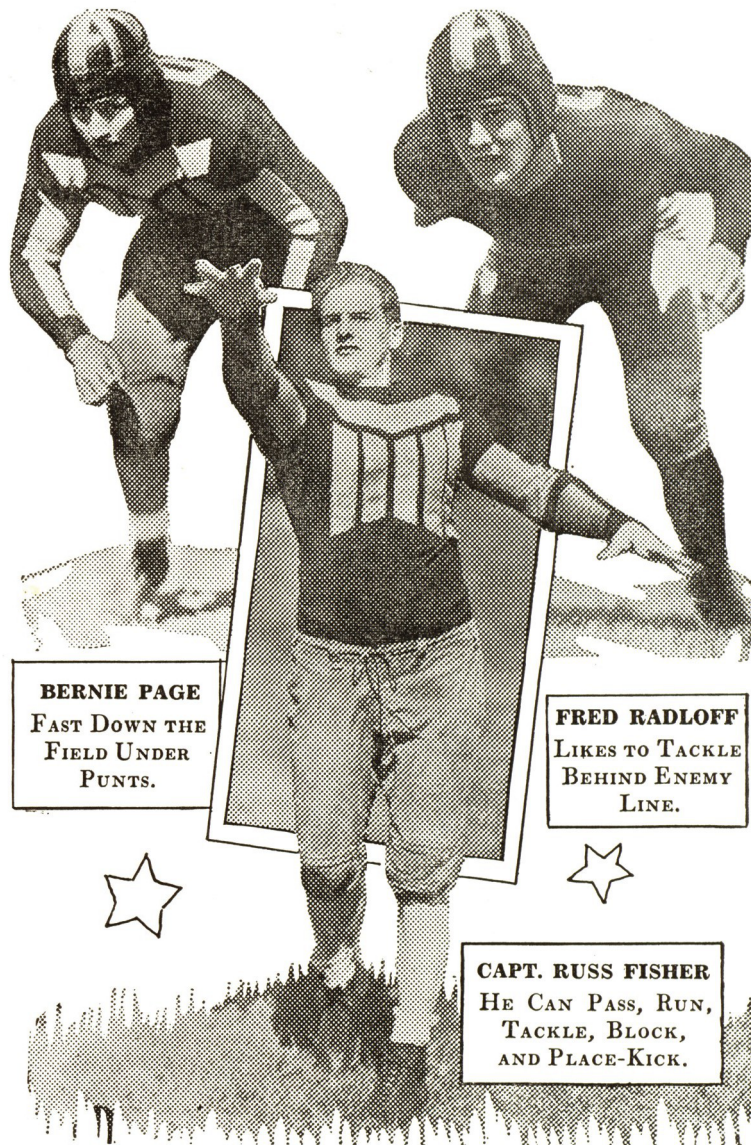
A Modern Fuel, high in heat, low in ash, easy to fire.  
These Coals Guarantee Your Winter Comfort. Buy them from

## Edwards Coal Co. Phone 20

These Coals are mined by  
OLD BEN COAL CORPORATION  
CHICAGO



# ON IOWA



**BERNIE PAGE**  
FAST DOWN THE  
FIELD UNDER  
PUNTS.

**FRED RADLOFF**  
LIKES TO TACKLE  
BEHIND ENEMY  
LINE.

**CAPT. RUSS FISHER**  
HE CAN PASS, RUN,  
TACKLE, BLOCK,  
AND PLACE-KICK.



**TEYRO**

Quarter Back



**HALTOM**

Quarter Back



# THE "LOW-DOWN" ON TODAY'S GAME

(Continued from page 5)

at guard, Radloff and Foster at tackles, and little Bernie Page at end.

Down at Ames, Coach Veenker has been quietly recruiting a football eleven that each ensuing Saturday has been turning in remarkable showings.

Less notorious, but ardent Iowa State fans think just as good, as Iowa's negro, is Tommy Neal. Tommy came to Veenker direct from a brilliant high school career at Central High in Sioux City. His spectacular open field running panicked the University of Missouri team. He can punt and pass capably, and above all, he is the best blocker on the Cyclone squad. To match Dick Crayne, the Iowa State mentor has red-haired Bill Allender, who spent a year at Northwestern before matriculating at Iowa State. This boy is the powerhouse of the Cyclones. He also punts when necessary, and is one of the best forward passers in the country. From an all-state guard in Nebraska, to captain and halfback at Iowa State has been the trail of Don Theophilus. His running mate, Marlowe Williams, prepped at Roosevelt in Des Moines. Both boys are super blockers, and while "Theo" excels at plunging the line, "Willie" is busy snatching tosses from Allender.

To answer Veenker's line problem, Hunter Brown transferred from Tarkio College in Missouri to take over the center post. Paul Berger came "up north" from Missouri, too. He plays right guard, and holds the Cyclone

shot put record. Another "foreigner"—Ike Hayes, of Ohio, came to do duty at the other guard post. A product of Ankeny High School—Harold Schafroth brought his 200 pounds of brawn to Veenker, and Veenker gave him a job at left tackle. Another husky sophomore—Marvin Oberg of Fremont, Neb., put in his application for the other tackle job, but was told that he would have to share the position with big John Catron, the Montana cowboy. From the varsity basketball squad, Frank Hood transferred to football, and insisted that he use his 206-pound bulk to prevent sweeps around the right side. Fred Poole drove out to school from his home in Ames, and promised Veenker to uphold the other end position. The local boy added that a couple of little runs wouldn't hurt, because he could always punt out of danger at an average of 40 to 50 yards per kick.

These boys stepped out on State Field the first Saturday, and beat Luther 23-3. Luther has since scored 75 points against two worthy rivals. Grinnell outgained Michigan State, but Iowa State trimmed Grinnell 26-6. Missiuri tied Colorado. The Cyclones drubbed the Tigers by two touchdowns. These facts added to one other—the fact that the first string hasn't been used more than two to three quarters of each game, and you have the reason why Cyclone followers will insist that the University eleven doesn't have more than an even chance of winning the game today.



# *This Souvenir Program . . .*

. . . comes from the presses of the Tribune Publishing Company here in Ames. It is the result of a combination of craftsmanship, modern equipment and speed in production.

We print anything from a tiny name-card to a mammoth newspaper edition. Our facilities are at your service.

We also publish Story county's own daily---the Ames Daily Tribune-Times.

And of course, we are under the Blue Eagle.



## TRIBUNE PUBLISHING COMPANY

Phone 2400

Ames, Iowa

### Statement

Some time ago the Federal Congress passed an act providing for a tax on admissions to athletic events, the tax being ten per cent (10%).

Attorney General Edward L. O'Connor has ruled that this tax does not apply to athletic contests and exhibitions of Iowa State College of Agriculture and Mechanic Arts. However, a test suit has been instituted by the govern-

ment in West Virginia and pending the outcome of this suit, ten per cent (10%) will be held in trust. In case the Court rules in favor of the government, this ten per cent (10%) will be paid to the government. If the Court sustains Attorney General Edward L. O'Connor's position, then this ten per cent (10%) will be returned to the purchaser.



# O'SHEA KNIT GOODS

We specialize in making Honor sweaters for schools  
—furnished in all standard colors. Special ten-day  
delivery. Chenille or Felt letters or emblems.

## PRACTICAL » PERFECT POPULAR

---

---

Endorsed and Used  
by All Leading  
Coaches and Schools

---

---

WRITE FOR QUOTATIONS AND COMPLETE INFORMATION TO . . .

## O'SHEA KNITTING MILLS

ATHLETIC KNITTED WEAR FOR EVERY SPORT

2414 N. SACRAMENTO AVENUE    »    »    »    »    CHICAGO