



INSTALLATION OF
PRESIDENT STEVEN LEATH

FIFTEENTH PRESIDENT
OF IOWA STATE UNIVERSITY

FRIDAY, THE FOURTEENTH OF SEPTEMBER
TWO THOUSAND AND TWELVE
AMES, IOWA

PRESIDENT STEVEN LEATH

DR. STEVEN LEATH BECAME THE 15TH PRESIDENT OF Iowa State University in January 2012. He came to Iowa State from North Carolina where he spent many years as a faculty member, research program leader, and high level administrator with the University of North Carolina system and North Carolina State University.

Dr. Leath serves on the Iowa STEM (science, technology, engineering, mathematics) Advisory Council and is a member of the executive committee of the Greater Des Moines Partnership Capital Crossroads Implementation Committee, a board member of the Iowa 4-H Foundation, and a member of the Iowa Business Council. He is also a member of the American Association for the Advancement of Science, Crop Science Society of America, and American Phytopathological Society.

From 2007 to 2012, Dr. Leath was vice president for research for the University of North Carolina General Administration. In that position, he promoted research and sponsored programs across the full spectrum of academic disciplines and interdisciplinary activities carried out by the University of North Carolina's (UNC) 16 university campuses. He worked to increase levels of external support from federal, state, and private sources and



worked closely with campus research administrators to develop research and sponsored program activity in support of the mission of each campus. In 2012, the UNC campuses attracted nearly \$1.4 billion in competitive research grants and contracts, primarily from the federal government. He also oversaw UNC's interinstitutional centers and the North Carolina Arboretum and was one of the leaders in such highly successful public-private partnerships as the North Carolina Centennial Campus, North Carolina Research Campus, Research Triangle Park, and the David H. Murdock Research Institute, which he helped establish and led as chief executive officer until joining Iowa State.

IOWA STATE UNIVERSITY

He joined the faculty of North Carolina State University's College of Agriculture and Life Sciences in 1985 as a plant pathologist with the U.S. Department of Agriculture's (USDA) Agricultural Research Service (ARS) unit based on the NC State campus. He was named professor and research leader of the unit in 1998, then spent two years as acting national grain crops program leader for the USDA's Agricultural Research Service in Washington, DC. He returned to NC State in 2001 as a professor and assistant director of the North Carolina Agricultural Research Service (NCARS), was promoted to associate director in 2003, and was named NCARS director and associate dean of the College of Agriculture and Life Sciences in 2005.

Dr. Leath holds a B.S. in plant science from Pennsylvania State University, a master's degree in plant science from the University of Delaware, and a Ph.D. in plant pathology from the University of Illinois. After receiving his Ph.D., he spent one year as an extension plant pathologist in Illinois. During his research career, Dr. Leath published nearly 100 scientific articles in plant disease resistance, plant pathology, plant breeding, and related fields.

He and his wife, Janet, have two adult sons, Eric and Scott.

THE ACADEMIC PROCESSION

PRESIDENTS AND OTHER OFFICIAL DELEGATES
OF COLLEGES AND UNIVERSITIES

REPRESENTATIVES OF ACADEMIC DEPARTMENTS,
IOWA STATE UNIVERSITY

OFFICIAL DELEGATES OF LEARNED SOCIETIES
AND PROFESSIONAL ORGANIZATIONS

REPRESENTATIVES OF THE FACULTY,
ADMINISTRATION, AND STUDENT BODY,
IOWA STATE UNIVERSITY

CHIEF MARSHALS

THE ACADEMIC PROCESSION

PLATFORM PARTY OFFICIALS

President of the Board of Regents, State of Iowa

President of the University

Erskine Bowles, President Emeritus, University of North Carolina

Governor of the State of Iowa

Lieutenant Governor of the State of Iowa

Chair of the Installation Planning Committee and Dean of the Library

President of the Faculty Senate

President of the Professional and Scientific Council

President of AFSCME Local 96

President of the Government of the Student Body

President of the Graduate and Professional Student Senate

President and CEO of ISU Alumni Association

Simon Estes, Adjunct Professor of Music

Mayor of the City of Ames

Executive Director of the Board of Regents, State of Iowa

Presidents of the Iowa Regent Universities

Members of the Board of Regents, State of Iowa

Senior Vice Presidents of the University

Vice Presidents of the University

Deans of the University

THE CEREMONIAL PROGRAM

CRAIG A. LANG

President of the Board of Regents, State of Iowa, Presiding

PRELUDE CONCERT

<i>Flourish for Wind Band</i>	Ralph Vaughan Williams
<i>Prospect</i>	Pierre LaPlante
<i>Prelude and Fugue from "The Spitfire"</i>	William Walton
	arr. Paul Noble
<i>Resplendent Glory</i>	Rossano Galante
<i>First Suite in E-flat for Military Band</i>	Gustav Holst
I. Chaconne	
II. Intermezzo	
III. March	

ISU Wind Ensemble

Michael Golemo, conductor

<i>A Cyclone Fanfare</i>	Michael Golemo
	Premier Performance

THE ACADEMIC PROCESSION

<i>March and Procession of Bacchus</i>	Leo Delibes
	arr. Eric Osterling
	ISU Wind Ensemble

OPENING CEREMONY

<i>The Posting of the Colors</i>	Joint Service Color Guard
<i>The Star-Spangled Banner</i>	Francis Scott Key
	arr. Michael Golemo

ISU Wind Ensemble

Simon Estes, bass-baritone

WELCOME

Craig A. Lang

GREETINGS

Representing the State of Iowa, The Honorable Terry E. Branstad, Governor

Representing the faculty, Suzanne Hendrich, President of the Faculty Senate

Representing the professional and scientific staff, David L. Orman,
President of the Professional and Scientific Council

Representing the merit staff, Andrew P. Bock,
President of AFSCME Local 96

THE CEREMONIAL PROGRAM

GREETINGS (continued)

Representing the students, Jared F Knight,
President of the Government of the Student Body

Representing the graduate students, Cory J. Kleinheksel,
President of the Graduate and Professional Student Senate

Representing the alumni, Jeffery W. Johnson,
President and CEO of the Iowa State University Alumni Association

MUSICAL PRESENTATION

"Come dal ciel precipita" from Macbeth.....Giuseppe Verdi
Simon Estes, bass-baritone arr. Michael Golemo

INTRODUCTION OF THE PRESIDENT

Erskine Bowles, President Emeritus, University of North Carolina

THE INSTALLATION

Installation of the President
Craig A. Lang

Installation Address
"Educate. Innovate. Achieve."
Steven Leath, President of Iowa State University of Science and Technology

MUSICAL PRESENTATIONS

If Music Be the Food of Love.....David Dickau
The Bells of Iowa State.....James Wilson
Iowa State Singers arr. Robert McCowen
James Rodde, conductor
Jodi Goble, accompanist

CLOSING REMARKS

Craig A. Lang

RECESSIONAL

Procession of the Nobles.....Nikolai Rimsky-Korsakov
ISU Wind Ensemble arr. Erik Leidzen

CEREMONIAL PROGRAM NOTES

ERSKINE BOWLES

Erskine Bowles is one of the nation's most respected academic, political, and business leaders. He became president of the multi-campus University of North Carolina in 2006, which he led until his retirement on December 31, 2010. He is a native of Greensboro, N.C., a graduate of the University of North Carolina and Columbia University's Graduate School of Business, and holds eight honorary doctorates.

Bowles began his business career at Morgan Stanley & Co. in New York. He returned to North Carolina, where he founded and served as chairman and CEO of the investment banking firm that became Bowles Hollowell Conner & Co. He also helped start two other investment companies.

In 1993, President Bill Clinton named Bowles director of the Small Business Administration. In 1994, he appointed him deputy White House chief of staff and later, chief of staff. Following his return to North Carolina, Bowles ran for the U.S. Senate in 2002 and 2004. In 2005, he was appointed United Nations deputy special envoy to 13 tsunami-affected countries in Southeast Asia. In 2010, President Barack Obama named Bowles and former Senator Alan Simpson to co-chair a bipartisan National Commission on Fiscal Responsibility and Reform.

Bowles helped found three entities that foster economic development in rural North Carolina. He was a vice chair of Carolinas Medical Center in Charlotte and helped create its ALS Center. He also has served as an international president of the Juvenile Diabetes Research Foundation and as a trustee of the Duke endowment. Bowles is a board member for Morgan Stanley, Cousins Properties, Facebook, Belk, and Norfolk Southern Corporation.

CEREMONIAL PROGRAM NOTES

SIMON ESTES

In the opera world, the name Simon Estes is synonymous with success. He has performed with every major international opera company as well as performing as a recitalist and orchestral bass-baritone. Currently the F. Wendell Miller Distinguished Artist in Residence and a professor of music at Iowa State University, Estes was born in Centerville, Iowa; is a graduate of the University of Iowa; and has taught at the Juilliard School. As an involved citizen and leader, he is promoting peace through international and intercultural understanding and respect. He has established numerous scholarship organizations to ease the financial burden for students, and in 1993, created the Simon Estes International Foundation for Children to provide financial assistance to underprivileged children around the world. In 1997, Iowa State honored his professional and humanitarian efforts by conferring upon him an honorary Doctor of Humane Letters degree.

ISU WIND ENSEMBLE

The ISU Wind Ensemble features sixty of the finest student wind and percussion players on campus. Its repertory includes challenging music from the sixteenth to the twentieth centuries, from small chamber groups to the full ensemble. The ensemble regularly commissions and premieres compositions and has performed with some of the world's finest soloists. In addition to on-campus performances, the ensemble has performed numerous times at the Iowa Bandmasters Association convention and since 2003, has had four performing tours to Europe.

IOWA STATE SINGERS

The Iowa State Singers is Iowa State's most select student choral ensemble. Music of all styles is performed with an emphasis on *a cappella* compositions. Performances include numerous on-campus performances such as the Holiday Choral Concert and the Masterworks Concert with orchestra. The singers annually stage a full-scale Madrigal Dinner and tour each year. The group has been honored with invitations to perform at the national conferences of the American Choral Directors Association (2005, 2009) and the National Collegiate Choral Organization (2008, 2011).

THE INSTALLATION MARSHALS

LARRY EBBERS, CHIEF MARSHAL

University Professor of Educational Leadership and Policy Studies

DANIEL C. ROBINSON, CHIEF MARSHAL

University Professor of Educational Leadership and Policy Studies

JOHN CUNNALLY

Associate Professor of Integrated Studio Arts

FREDERICK H. DARK

Associate Professor and Chair of Finance

VERONICA J. DARK

Professor of Psychology

MARY-BETH GOLEMO

Program Coordinator in the Department of Residence

RICHARD E. HORTON

Emeritus Professor of Electrical and Computer Engineering

INGRID M. LILLIGREN

Professor and Interim Chair of Integrated Studio Arts

JON J. TOLLEFSON

Professor of Entomology

ROBERT S. WALLACE

Associate Professor of Ecology, Evolution, and Organismal Biology

THE PLATFORM PARTY OFFICIALS

The Honorable Terry E. Branstad, Governor of the State of Iowa
The Honorable Kimberly Reynolds, Lieutenant Governor of the State of Iowa
Craig A. Lang, President of the Board of Regents, State of Iowa
Nicole C. Carroll, Board of Regents, State of Iowa
Robert N. Downer, Board of Regents, State of Iowa
Jack B. Evans, Board of Regents, State of Iowa
Ruth R. Harkin, Board of Regents, State of Iowa
Greta A. Johnson, Board of Regents, State of Iowa
David W. Miles, Board of Regents, State of Iowa
Katie S. Mulholland, Board of Regents, State of Iowa
Robert Donley, Executive Director, Board of Regents, State of Iowa
Steven Leath, President, Iowa State University
Sally Mason, President, The University of Iowa
Benjamin J. Allen, President, University of Northern Iowa
Erskine Bowles, President Emeritus, University of North Carolina
The Honorable Ann Campbell, Mayor of the City of Ames
Jeffery W. Johnson, President and CEO, ISU Alumni Association
Jared F. Knight, President, Government of the Student Body
Cory J. Kleinheksel, President, Graduate and Professional Student Senate
Suzanne Hendrich, President, Faculty Senate
David L. Orman, President, Professional and Scientific Council
Andrew P. Bock, President, AFSCME Local 96
Simon Estes, Adjunct Professor of Music
Jonathan A. Wickert, Senior Vice President and Provost
Thomas L. Hill, Senior Vice President for Student Affairs
Warren R. Madden, Senior Vice President for Business and Finance
Cathann A. Kress, Vice President for Extension and Outreach
Sharron S. Quisenberry, Vice President for Research and Economic Development
Wendy K. Wintersteen, Dean, College of Agriculture and Life Sciences
Michael R. Crum, Interim Dean, College of Business
Luis Rico-Gutierrez, Dean, College of Design
Mufit Akinc, Interim Dean, College of Engineering
Pamela J. White, Dean, College of Human Sciences
Beate Schmittmann, Dean, College of Liberal Arts and Sciences
Lisa K. Nolan, Dean, College of Veterinary Medicine
Olivia M. A. Madison, Dean, University Library, and Chair, Installation Planning Committee
David K. Holger, Dean, Graduate College
Pamela D. Anthony, Dean of Students

DELEGATES OF UNIVERSITIES AND COLLEGES

- 1636 HARVARD UNIVERSITY, Laurent Hodges, Alumnus
- 1701 YALE UNIVERSITY, Hayward Draper, Alumnus
- 1746 PRINCETON UNIVERSITY, Stephen Roberts, Alumnus
- 1749 UNIVERSITY OF PENNSYLVANIA, Nadia Anderson, Alumna
- 1754 COLUMBIA UNIVERSITY, Charles Kniker, Alumnus
- 1789 UNIVERSITY OF NORTH CAROLINA, CHAPEL HILL,
Joseph Templeton, Professor of Chemistry
- 1819 UNIVERSITY OF VIRGINIA, J. Timothy Keller, Alumnus
- 1820 INDIANA UNIVERSITY, Michael Crum, Alumnus
- 1831 NEW YORK UNIVERSITY, Peter Hermann, Alumnus
- 1834 TULANE UNIVERSITY, Kathleen Hickok, Alumna
- 1839 UNIVERSITY OF MISSOURI, Olivia Madison, Alumna
- 1842 IOWA WESLEYAN COLLEGE, Lester Moore, Alumnus
- 1845 BAYLOR UNIVERSITY, Janelle Walter, Professor
- 1846 GRINNELL COLLEGE,
Houston Dougharty, Vice President for Student Affairs
- 1846 UNIVERSITY OF BUFFALO, Robert Bosselman, Alumnus
- 1847 THE UNIVERSITY OF IOWA, Sally Mason, President
- 1850 UNIVERSITY OF ROCHESTER, Glenn Janus, Alumnus
- 1852 WARTBURG COLLEGE, Darrel Colson, President
- 1853 CORNELL COLLEGE,
Melinda Green, Associate Professor of Psychology
- 1853 WASHINGTON UNIVERSITY IN ST. LOUIS,
Donald Zytowski, Alumnus
- 1855 MICHIGAN STATE UNIVERSITY, Donald Beitz, Alumnus
- 1863 KANSAS STATE UNIVERSITY, Tammy Niemann, Alumna
- 1865 CORNELL UNIVERSITY, George Christensen, Alumnus
- 1865 UNIVERSITY OF KANSAS, James Michael Downard, Alumnus
- 1867 WEST VIRGINIA UNIVERSITY,
Michele Wheatly, Provost and Vice President for Academic Affairs

DELEGATES OF UNIVERSITIES AND COLLEGES

1873 TEXAS CHRISTIAN UNIVERSITY, Timothy Diebel, Alumnus

1873 WILLIAM PENN UNIVERSITY, Ann Fields, President

1876 UNIVERSITY OF NORTHERN IOWA, Benjamin Allen, President

1881 DRAKE UNIVERSITY, David Maxwell, President

1882 ST. AMBROSE UNIVERSITY,
Paul Koch, Vice President for Academic and Student Affairs

1885 GEORGIA INSTITUTE OF TECHNOLOGY,
Lawrence Staunton, Alumnus

1887 NORTH CAROLINA STATE UNIVERSITY,
Steven Lommel, Distinguished Professor and Associate Director,
NC Agricultural Research Service

1890 OKLAHOMA STATE UNIVERSITY, Robert Bosselman, Alumnus

1891 BUENA VISTA UNIVERSITY, Tabatha Carney,
Senior Manager of Graduate and Professional Studies Recruitment and Admissions

1891 CALIFORNIA INSTITUTE OF TECHNOLOGY,
John Schroeter, Alumnus

1891 RICE UNIVERSITY, Thomas Holme, Alumnus

1891 UNIVERSITY OF CALIFORNIA, SANTA BARBARA,
Thomas Peterson, Alumnus

1895 GRACELAND UNIVERSITY,
William Higdon, President Emeritus

1896 GRAND VIEW UNIVERSITY, Kent Henning, President

1899 MERCY COLLEGE OF HEALTH SCIENCES,
Barbara Decker, President

1900 CARNEGIE MELLON UNIVERSITY, Rohit Trivedi, Alumnus

1928 MOUNT MERCY UNIVERSITY,
Robert Kazimour, Board of Trustees

1966 DES MOINES AREA COMMUNITY COLLEGE,
Robert Denson, President

1966 HAWKEYE COMMUNITY COLLEGE, Linda Allen, President

1966 IOWA CENTRAL COMMUNITY COLLEGE,
Daniel Kinney, President

REPRESENTATIVES OF ACADEMIC DEPARTMENTS, IOWA STATE UNIVERSITY

ACCOUNTING

Todd Thornock, Assistant Professor

AEROSPACE ENGINEERING

Dale Chimenti, Professor

AGRICULTURAL

EDUCATION AND STUDIES

W. Wade Miller,
Professor and Chair

AGRICULTURAL AND BIOSYSTEMS ENGINEERING

Steven Mickelson,
Professor and Chair

AGRONOMY

Kendall Lamkey,
Professor and Chair

AIR FORCE

AEROSPACE STUDIES
Lieutenant Colonel Michael Novy,
Professor and Chair

ANIMAL SCIENCE

Maynard Hogberg,
Professor and Chair

ANTHROPOLOGY

Maximilian Viatori III

APPAREL, EVENTS, AND HOSPITALITY MANAGEMENT

Robert Bosselman,
Professor and Chair

ARCHITECTURE

Jason Alread, Associate Professor
and Director of Graduate Education

BIOCHEMISTRY, BIOPHYSICS, AND MOLECULAR BIOLOGY

Aragula Rao, Professor and Chair

BIOMEDICAL SCIENCES

Anumantha Kanthasamy,
Professor and Chair

CHEMICAL AND BIOLOGICAL ENGINEERING

Surya Mallapragada,
Professor and Chair

CHEMISTRY

William Jenks,
Professor and Chair

CIVIL, CONSTRUCTION, AND ENVIRONMENTAL ENGINEERING

Terry Wipf, Professor
and Interim Chair

COMMUNITY AND REGIONAL PLANNING

Katia Balassiano, Assistant Professor
Gary Taylor, Associate Professor

COMPUTER SCIENCE

Carl Chang, Professor and Chair

ECOLOGY, EVOLUTION, AND ORGANISMAL BIOLOGY

Robert Wallace, Associate Professor

ECONOMICS

John Schroeter,
Professor and Interim Chair

SCHOOL OF EDUCATION

Ralph Reynolds, Director

REPRESENTATIVES OF ACADEMIC DEPARTMENTS, IOWA STATE UNIVERSITY

ELECTRICAL AND COMPUTER ENGINEERING

David Jiles, Distinguished
Professor and Chair

ENGLISH

Barbara Ching, Professor and Chair
Margaret LaWare, Associate Professor

ENTOMOLOGY

Jon Tollefson, Professor

FINANCE

Frederick Dark,
Associate Professor and Chair

FOOD SCIENCE AND HUMAN NUTRITION

Ruth MacDonald,
Professor and Chair

GENETICS, DEVELOPMENT, AND CELL BIOLOGY

Jo Anne Powell-Coffman,
Professor and Interim Chair

GEOLOGICAL AND ATMOSPHERIC SCIENCES

Neal Iverson, Professor and Chair

GRAPHIC DESIGN

Debra Satterfield, Associate
Professor and Interim Chair

GREENLEE SCHOOL OF JOURNALISM AND COMMUNICATION

Michael Bugeja,
Professor and Director

HISTORY

Pamela Riney-Kehrberg,
Professor and Chair

HORTICULTURE

Jeffery Iles, Professor and Chair

HUMAN DEVELOPMENT AND FAMILY STUDIES

Tahira Hira, Professor

INDUSTRIAL AND MANUFACTURING SYSTEMS ENGINEERING

Janis Terpenney, Professor and Chair

INDUSTRIAL DESIGN

Steven Herrnstadt, University Professor

INTEGRATED STUDIO ARTS

Ingrid Lilligren,
Professor and Interim Chair

INTERIOR DESIGN

Lee Cagley, Professor and Chair

KINESIOLOGY

Philip Martin, Professor and Chair

LANDSCAPE ARCHITECTURE

Douglas Johnston,
Professor and Interim Chair

MANAGEMENT

C. Brad Shrader, Professor

MARKETING

Sanjeev Agarwal,
University Professor

REPRESENTATIVES OF ACADEMIC DEPARTMENTS, IOWA STATE UNIVERSITY

MATERIALS SCIENCE AND ENGINEERING

Kristen Constant,
Professor and Chair

MATHEMATICS

Wolfgang Kliemann,
Professor and Chair

MECHANICAL ENGINEERING

Theodore Heindel,
Professor and Interim Chair

MILITARY SCIENCE AND TACTICS

Major Richard Smith,
Professor and Chair

MUSIC AND THEATRE

Christopher Hopkins,
Associate Professor

NATURAL RESOURCE ECOLOGY AND MANAGEMENT

Sue Blodgett, Professor and Chair

NAVAL SCIENCE

Captain Gary Waring,
Professor and Chair

PHILOSOPHY AND RELIGIOUS STUDIES

Kevin deLapante,
Associate Professor and Chair

PHYSICS AND ASTRONOMY

Joseph Shinar, Professor and Chair

PLANT PATHOLOGY AND MICROBIOLOGY

Thomas Baum, Professor and Chair

POLITICAL SCIENCE

James McCormick,
Professor and Chair

PSYCHOLOGY

Carolyn Cutrona,
Professor and Chair

SOCIOLOGY

Gloria Jones Johnson, Professor

STATISTICS AND STATISTICAL LABORATORY

Kenneth Koehler, Chair and Director

SUPPLY CHAIN

INFORMATION SYSTEMS
Toyin Clottey, Assistant Professor

UNIVERSITY LIBRARY

Olivia Madison, Professor and Dean

VETERINARY

CLINICAL SCIENCES

Rodney Bagley, Professor and Chair

VETERINARY DIAGNOSTIC AND PRODUCTION

ANIMAL MEDICINE

Patrick Halbur, Professor and Chair

VETERINARY

MICROBIOLOGY AND PREVENTIVE MEDICINE

Michael Wannemuehler,
Professor and Chair

VETERINARY PATHOLOGY

Joseph Haynes, Professor and Chair

WORLD LANGUAGES AND CULTURES

Elisa Rizo, Assistant Professor

DELEGATES OF LEARNED SOCIETIES AND PROFESSIONAL ORGANIZATIONS

ACADEMY OF NUTRITION AND DIETETICS

Jean Anderson, Member

ACCREDITING COUNCIL FOR EDUCATION IN JOURNALISM AND MASS COMMUNICATIONS

Jane Peterson, Member

AGRICULTURAL AND APPLIED ECONOMICS ASSOCIATION

Wallace Huffman, Fellow

AGRICULTURAL HISTORY SOCIETY

Pamela Riney-Kehrberg, President

AMERICAN ACCOUNTING ASSOCIATION

Todd Thornock, Member

AMERICAN ALLIANCE FOR HEALTH, PHYSICAL EDUCATION, RECREATION, AND DANCE

Philip Martin, Member

AMERICAN ASSOCIATION FOR AGRICULTURAL EDUCATION

Robert Martin, Fellow

AMERICAN ASSOCIATION FOR THE ADVANCEMENT OF SCIENCE

Marit Nilsen-Hamilton, Fellow Member

Steven Rodermel, Fellow Member

Patricia Thiel, Fellow Member

Lee Anne Willson, Fellow Member

AMERICAN ASSOCIATION OF BOVINE PRACTITIONERS

Johann Coetzee, Member

AMERICAN ASSOCIATION OF CEREAL CHEMISTS INTERNATIONAL

Jay-lin Jane, Fellow

AMERICAN ASSOCIATION OF FAMILY AND CONSUMER SCIENCES

Margaret Torrie, Representative

AMERICAN ASSOCIATION OF SWINE VETERINARIANS

Rodney Baker, Member

AMERICAN ASSOCIATION OF VETERINARY LABORATORY DIAGNOSTICIANS

Patrick Halbur, Member

AMERICAN ASTRONOMICAL SOCIETY

Lee Anne Willson, Vice President

AMERICAN BANDMASTERS ASSOCIATION

Michael Golemo, Member

AMERICAN BOARD OF VETERINARY PRACTITIONERS

Beatrice Sponseller, Member

THE AMERICAN CERAMIC SOCIETY

Mufit Akinc, Fellow

DELEGATES OF LEARNED SOCIETIES AND PROFESSIONAL ORGANIZATIONS

AMERICAN
CHEMICAL SOCIETY
William Jenks, Member

AMERICAN CHORAL
DIRECTORS ASSOCIATION
James Rodde, Member

AMERICAN COLLEGE
OF SPORTS MEDICINE
Philip Martin, Member

AMERICAN COLLEGE
OF VETERINARY
ANESTHESIOLOGISTS
Dean Riedesel, Member

AMERICAN COLLEGE OF
VETERINARY DERMATOLOGY
Elizabeth May, Member

AMERICAN COLLEGE OF
VETERINARY EMERGENCY
AND CRITICAL CARE
David Wong, Member

AMERICAN COLLEGE OF
VETERINARY INTERNAL
MEDICINE (ACVIM)
Robert King, Member
ACVIM Specialties:
Internal Medicine, Rod Bagley
Cardiology, Wendy Ware
Neurology, Rod Bagley

AMERICAN COLLEGE
OF VETERINARY
OPHTHALMOLOGISTS
David Whitley, Member

AMERICAN COLLEGE OF
VETERINARY PATHOLOGISTS
Claire Andreasen, President

AMERICAN COLLEGE OF
VETERINARY RADIOLOGY
Kristina Miles, Member

AMERICAN COLLEGE OF
VETERINARY SURGEONS
Cheryl Hedlund, Member

AMERICAN COLLEGE
OF THERIOGENOLOGISTS
Larry Evans, Member

AMERICAN COUNCIL
ON CONSUMER INTERESTS
Timothy Griesdorn, Representative

AMERICAN DAIRY
SCIENCE ASSOCIATION
Donald Beitz, Fellow
Stephanie Clark, Member

AMERICAN ECONOMIC
ASSOCIATION
John Schroeter, Member

AMERICAN FINANCE
ASSOCIATION
Frederick Dark, Member

AMERICAN
GASTROENTEROLOGICAL
ASSOCIATION
Michael Wannemuehler, Member

AMERICAN
GEOPHYSICAL UNION
Neal Iverson, Member

DELEGATES OF LEARNED SOCIETIES AND PROFESSIONAL ORGANIZATIONS

AMERICAN HISTORICAL ASSOCIATION

Michael Bailey, Representative

AMERICAN INSTITUTE OF AERONAUTICS AND ASTRONAUTICS

Richard Wlezien, Representative

AMERICAN INSTITUTE OF ARCHITECTS

Kevin Monson,
Iowa Past-President and Member

AMERICAN INSTITUTE OF CERTIFIED PLANNERS

Katia Balassiano, Member

AMERICAN INSTITUTE OF CHEMICAL ENGINEERS

James Hill, Member

AMERICAN INSTITUTE OF MEDICAL AND BIOLOGICAL ENGINEERING

Jacqueline Shanks, Member

AMERICAN LIBRARY ASSOCIATION

Karen Lawson, Representative

AMERICAN MATHEMATICAL SOCIETY

Steve Butler, Representative

AMERICAN MEAT SCIENCE ASSOCIATION

Joseph Sebranek, Member

AMERICAN METEOROLOGICAL SOCIETY

Eugene Takle, Member

AMERICAN OIL CHEMISTS' SOCIETY

Lawrence Johnson, Fellow

AMERICAN ORNITHOLOGISTS' UNION

Bonnie Bowen, Fellow

AMERICAN PHILOLOGICAL ASSOCIATION

Madeleine Henry, Representative

AMERICAN PHYSICAL SOCIETY

Vikram Dalal, Member

Duane Johnson, Fellow Member

Joseph Shinar, Fellow Member

AMERICAN PHYTOPATHOLOGICAL SOCIETY

Thomas Baum, Member

AMERICAN PLANNING ASSOCIATION

Gary Taylor, Member

AMERICAN POLITICAL SCIENCE ASSOCIATION

James McCormick, Member

AMERICAN PSYCHOLOGICAL ASSOCIATION

Veronica Dark, Member

Jennifer Margrett, Member

DELEGATES OF LEARNED SOCIETIES AND PROFESSIONAL ORGANIZATIONS

AMERICAN PUBLIC HEALTH ASSOCIATION

Ruth Litchfield, Member

AMERICAN SOCIETY FOR BIOCHEMISTRY AND MOLECULAR BIOLOGY

Donald Beitz, Representative

THE AMERICAN SOCIETY FOR CELL BIOLOGY

Kristen Johansen, Representative

AMERICAN SOCIETY FOR ENGINEERING EDUCATION

Lawrence Genalo, Fellow Member

AMERICAN SOCIETY FOR ENOLOGY AND VITICULTURE

Murlidhar Dharmadhikari, Member

AMERICAN SOCIETY FOR HORTICULTURAL SCIENCE

Gail Nonnecke, Representative

AMERICAN SOCIETY FOR MICROBIOLOGY

Byron Brehm-Stecher, Member

Larry Halverson, Member

Catherine Logue, Member

Chris Minion, Member

AMERICAN SOCIETY FOR NUTRITION

Diane Birt, Member

AMERICAN SOCIETY OF AGRICULTURAL AND BIOLOGICAL ENGINEERS

Steven Hoff, Fellow

Buddi Lamsal, Member

AMERICAN SOCIETY OF AGRONOMY

Kenneth Moore, Fellow

AMERICAN SOCIETY OF ANIMAL SCIENCE

Maynard Hogberg, Member

AMERICAN SOCIETY OF BIOMECHANICS

Philip Martin, Member

AMERICAN SOCIETY OF CIVIL ENGINEERS

Shashi Nambisan, Representative

AMERICAN SOCIETY OF INTERIOR DESIGNERS

Lee Cagley, Member

AMERICAN SOCIETY OF LANDSCAPE ARCHITECTS

Douglas Johnston, Member

THE AMERICAN SOCIETY OF MECHANICAL ENGINEERS

Theodore Heindel, Member

AMERICAN SOCIETY OF PLANT BIOLOGISTS

Gustavo MacIntosh, Member

Steven Rodermel, Member

AMERICAN SOCIETY OF TRANSPORTATION AND LOGISTICS

Yoshinori Suzuki, Member

DELEGATES OF LEARNED SOCIETIES AND PROFESSIONAL ORGANIZATIONS

AMERICAN STRING
TEACHERS ASSOCIATION
Jonathan Sturm, Member

AMERICAN STUDIES
ASSOCIATION
Emily Godbey, Member

APMI INTERNATIONAL
Iver Anderson, Fellow Member

ASM INTERNATIONAL
Mufit Akinc,
Fellow Member and Past Trustee

ASSOCIATION FOR CAREER
AND TECHNICAL EDUCATION
Lisa Stange, Representative

ASSOCIATION
FOR EDUCATION
IN JOURNALISM AND
MASS COMMUNICATION
Daniela Dimitrova, Member

ASSOCIATION FOR
INFORMATION SYSTEMS
Joey George, Member

ASSOCIATION FOR
PSYCHOLOGICAL SCIENCE
Susan Cross, Fellow

ASSOCIATION FOR
RESEARCH IN VISION
AND OPHTHALMOLOGY
Donald Sakaguchi, Member

ASSOCIATION FOR THE
SCIENCES OF LIMNOLOGY
AND OCEANOGRAPHY
John Downing, President

ASSOCIATION OF
RESEARCH LIBRARIES
David Gregory, Representative

AUDIO ENGINEERING
SOCIETY
Chad Jacobsen, Member

BOTANICAL SOCIETY
OF AMERICA
Harry Horner, Past President

COLLEGE ART ASSOCIATION
Ingrid Lilligren, Member

COLLEGE BAND DIRECTORS
NATIONAL ASSOCIATION
Steven Smyth, Member

COLLEGE MUSIC SOCIETY
Christopher Hopkins, Member

CONFERENCE OF
RESEARCH WORKERS
IN ANIMAL DISEASE
Catherine Logue, Member

CONSORTIUM OF AQUATIC
SCIENCE SOCIETIES
John Downing, Board Member

COOPER
ORNITHOLOGICAL SOCIETY
Bonnie Bowen, Honorary Member

DELEGATES OF LEARNED SOCIETIES AND PROFESSIONAL ORGANIZATIONS

COUNCIL OF SCIENTIFIC SOCIETY PRESIDENTS

John Downing, Board Member

COUNCIL OF SUPPLY CHAIN MANAGEMENT PROFESSIONALS

David Cantor, Member

CROHN'S AND COLITIS FOUNDATION OF AMERICA

Michael Wannemuehler, Member

CROP SCIENCE SOCIETY OF AMERICA

Nick Christians, Fellow Member

Mark Westgate, Fellow Member

DESIGN RESEARCH SOCIETY

Debra Satterfield, Member

ECOLOGICAL SOCIETY OF AMERICA

Matthew Liebman, Member

ECONOMETRIC SOCIETY

Arne Hallam, Member

ETA KAPPA NU HONOR SOCIETY

Timothy Bigelow, ISU Chapter Adviser

EUROPEAN ACADEMY OF SCIENCES

Mufit Akinc, Member

EUROPEAN COLLEGE OF VETERINARY NEUROLOGY

Nick Jeffery, Member

FINANCIAL MANAGEMENT ASSOCIATION

Frederick Dark, Member

THE FURNITURE SOCIETY

Christopher Martin, Member

GENETICS SOCIETY OF AMERICA

Harry Horner, Member

GEOLOGICAL SOCIETY OF AMERICA

Neal Iverson, Member

GERONTOLOGICAL SOCIETY OF AMERICA

Peter Martin, Representative

THE GLASS AND OPTICAL MATERIALS DIVISION OF THE AMERICAN CERAMIC SOCIETY

Steve Martin, Chair

HOUSING EDUCATION AND RESEARCH ASSOCIATION

Christine Cook, Representative

IEEE COMPUTER SOCIETY

Carl Chang, Past President

INSTITUTE FOR OPERATIONS RESEARCH AND THE MANAGEMENT SCIENCES (INFORMS)

Zhengrui Jiang, Member

DELEGATES OF LEARNED SOCIETIES AND PROFESSIONAL ORGANIZATIONS

INSTITUTE OF
ELECTRICAL AND
ELECTRONICS ENGINEERS

James McCalley, Fellow

INSTITUTE OF FOOD
TECHNOLOGISTS

Lester Wilson, Fellow

INSTITUTE OF
MANAGEMENT
ACCOUNTANTS

Todd Thornock, Member

INSTITUTE FOR MATERIALS,
METALS, AND MINING
OF THE UNITED KINGDOM

Alexander King, Fellow Member

INTERNATIONAL
ASSOCIATION FOR
FOOD PROTECTION

Aubrey Mendonca, Member

INTERNATIONAL
ASTRONOMICAL UNION

Steven Kawaler, President

INTERNATIONAL
CLARINET ASSOCIATION

Gregory Oakes, Member

INTERNATIONAL
COUNCIL ON HOTEL,
RESTAURANT, AND
INSTITUTIONAL EDUCATION

Robert Bosselman, Member

INTERNATIONAL
ENCAUSTIC ARTS

Barbara Walton, Member

INTERNATIONAL INTERIOR
DESIGN ASSOCIATION

Lee Cagley, Member

INTERNATIONAL
ORGANIZATION
FOR MYCOPLASMOLOGY

Chris Minion, Member

INTERNATIONAL SOCIETY
FOR HORTICULTURAL
SCIENCE

Paul Domoto, Representative

INTERNATIONAL SOCIETY
OF ARBORICULTURE

Jeffery Iles, Member

INTERNATIONAL SOCIETY
OF LIMNOLOGY

John Downing, Member

INTERNATIONAL TEXTILE
AND APPAREL ASSOCIATION

Mary Lynn Damhorst, Member

INTERNATIONAL
TURFGRASS SOCIETY

Nick Christians, Representative

IOWA FRUIT AND
VEGETABLE GROWERS
ASSOCIATION

Ajay Nair, Representative

DELEGATES OF LEARNED SOCIETIES AND PROFESSIONAL ORGANIZATIONS

IOWA NURSERY AND LANDSCAPE ASSOCIATION

Ann Marie VanDerZanden,
Representative

IOWA WATER ENVIRONMENT ASSOCIATION

Shihwu Sung, Representative

MATERIALS RESEARCH SOCIETY

Rana Biswas, Member
Alexander King, Fellow Member

MATHEMATICAL ASSOCIATION OF AMERICA

Stephen Willson, Representative

THE MINERALS, METALS, AND MATERIALS SOCIETY

Karl Gschneidner, Jr.,
Fellow Member

NATIONAL ACADEMY OF ENGINEERING

Karl Gschneidner, Jr., Member

NATIONAL ACADEMY OF KINESIOLOGY

Philip Martin, Member

NATIONAL ASSOCIATION FOR MUSIC EDUCATION

Natalie Steele, Member

NATIONAL ASSOCIATION OF TEACHERS OF SINGING

Donald Simonson, Member

NATIONAL BAND ASSOCIATION

Michael Golemo, Member

NATIONAL COUNCIL ON FAMILY RELATIONS

Clinton Gudmunson, Representative

NATIONAL FLUTE ASSOCIATION

Sonja Giles, Member

NATIONAL SOCIETY OF PROFESSIONAL ENGINEERS

Fouad Fanous, Representative
Umesh Vaidya, Member

NOBEL PRIZE WINNER, CHEMISTRY

Dan Shechtman, 2011

NORTH AMERICAN COLLEGES AND TEACHERS OF AGRICULTURE

Ann Marie VanDerZanden,
Representative

NORTH AMERICAN LAKE MANAGEMENT SOCIETY

John Downing, Member

NORTH AMERICAN SAXOPHONE ALLIANCE

Michael Giles, Member

NORTH AMERICAN SOCIETY FOR THE PSYCHOLOGY OF SPORT AND PHYSICAL ACTIVITY

Ann Smiley-Oyen, Member

DELEGATES OF LEARNED SOCIETIES AND PROFESSIONAL ORGANIZATIONS

PERCUSSIVE ARTS SOCIETY

Matthew Coley, Member

PHI ZETA

N. Matthew Ellinwood

PI KAPPA LAMBDA

MUSIC HONOR SOCIETY

Janet Alcorn-Ferrone, Member

PI TAU SIGMA

Theodore Heindel, Member

POULTRY SCIENCE

ASSOCIATION

Susan Lamont, Member

PRODUCTION

AND OPERATIONS

MANAGEMENT SOCIETY

Danny Johnson, Member

THE PROTEIN SOCIETY

Aragula Rao, Representative

RIBONUCLEIC ACID SOCIETY

Marit Nilsen-Hamilton, Member

SIGMA XI

Steven Kawaler, Member

SOCIETY FOR ELECTRO-

ACOUSTIC MUSIC IN

THE UNITED STATES

Christopher Hopkins, Member

SOCIETY FOR

FRESHWATER SCIENCE

John Downing, Board Member

SOCIETY FOR INDUSTRIAL

AND APPLIED MATHEMATICS

Ryan Martin, Representative

SOCIETY FOR MUSIC THEORY

Kristy Bryden, Member

SOCIETY FOR NEUROSCIENCE

Anumantha Kanthasamy, Member

Donald Sakaguchi, Member

Ann Smiley-Oyen, Member

SOCIETY FOR NUTRITION

EDUCATION AND BEHAVIOR

Sarah Francis, Member

SOCIETY FOR RESEARCH

IN CHILD DEVELOPMENT

Carla Peterson, Representative

SOCIETY FOR RESEARCH

ON ADOLESCENCE

Tricia Neppel, Representative

SOCIETY FOR THE STUDY

OF HUMAN DEVELOPMENT

Brenda Lohman, Representative

SOCIETY OF DIRECTORS

Brad Dell, Member

SOCIETY OF TOXICOLOGY

Suzanne Hendrich, Member

Anumantha Kanthasamy, Member

SOIL SCIENCE

SOCIETY OF AMERICA

Kathleen Delate, Member

Robert Horton, Fellow

DELEGATES OF LEARNED SOCIETIES AND PROFESSIONAL ORGANIZATIONS

SOUTHERN
GRAPHICS COUNCIL
April Katz, Member

SURFACE DESIGN
ASSOCIATION
Teresa Paschke, Member

TAU BETA PI
Diane Rover, Member

TRANSPORTATION
RESEARCH BOARD
Doug Gransberg, Representative

WEED SCIENCE
SOCIETY OF AMERICA
Micheal Owen, Fellow

BOARD OF REGENTS, STATE OF IOWA

CRAIG A. LANG, PRESIDENT, Brooklyn

BRUCE L. RASTETTER, PRESIDENT PRO TEM, Ames

NICOLE C. CARROLL, Carroll

ROBERT N. DOWNER, Iowa City

JACK B. EVANS, Cedar Rapids

RUTH R. HARKIN, Cumming

GRETA A. JOHNSON, LeMars

DAVID W. MILES, West Des Moines

KATIE S. MULHOLLAND, Marion

Nine citizens of Iowa make up the Board of Regents, State of Iowa, and are appointed by the Governor of Iowa and confirmed by the Iowa Senate to six-year terms.

Three members are appointed each odd-number year.

THE BOARD IS RESPONSIBLE FOR:

Iowa State University

The University of Iowa

University of Northern Iowa

Iowa Braille and Sight Saving School

Iowa School for the Deaf

THE PRESIDENTS OF
IOWA STATE UNIVERSITY

ADONIJAH STRONG WELCH , May 11, 1868–November 27, 1883
SEAMAN ASAH EL KNAPP , December 1, 1883–December 5, 1884
LEIGH SMITH JOHN HUNT , February 1, 1885–July 20, 1886
WILLIAM ISAAC CHAMBERLAIN , July 20, 1886–November 13, 1890
WILLIAM MILLER BEARDSHEAR , February 1, 1891–August 5, 1902
ALBERT BOYNTON STORMS , September 1, 1903–August 31, 1910
RAYMOND ALLEN PEARSON , September 1, 1912–August 31, 1926
RAYMOND MOLLYNEAUX HUGHES , September 1, 1927–March 17, 1936
CHARLES EDWIN FRILEY , March 17, 1936–June 30, 1953
JAMES HAROLD HILTON , July 1, 1953–June 30, 1965
WILLIAM ROBERT PARKS , July 1, 1965–June 30, 1986
GORDON PRYOR EATON , July 1, 1986–October 19, 1990
MARTIN CHARLES JISCHKE , June 1, 1991–August 14, 2000
GREGORY L. GEOFFROY , July 1, 2001–January 15, 2012
STEVEN LEATH , January 16, 2012–

THE OFFICIAL UNIVERSITY MACE



THE IOWA STATE UNIVERSITY MACE symbolizes the authority of the university president. The chief faculty marshal carries it at the head of the academic procession and, by placing it on its stand, signals the beginning of the ceremony.

In medieval times, the mace was a studded, club-like weapon made of iron and capable of breaking armor. It was associated with the protection of kings in France and England.

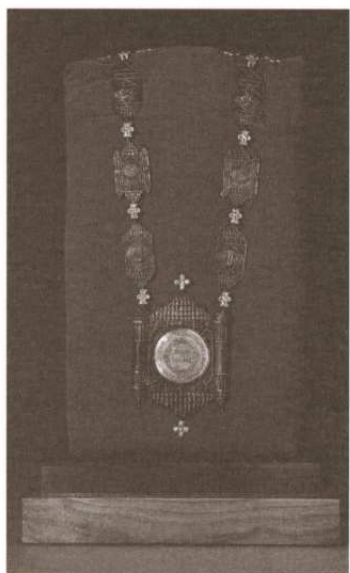
Created in bronze, silver, and tiger maple, the Iowa State University mace is an interpretation of the campanile. It includes a silver presidential seal and reflects in a disc inscribed with the words "Iowa

State University—Science with Practice," which is representative of the Fountain of the Four Seasons, an important campus icon. It features likenesses of four Native American women and was created in 1941 by Christian Petersen, sculptor-in-residence from 1934–1955.

The tiger maple staff bears 14 bronze plaques inscribed with the names of all previous Iowa State presidents and their years of service. The overall height of the university mace is 60 inches, and it weighs 14 pounds.

Sculptor Jeanne L. Stevens-Sollman of Bellefonte, Pennsylvania, designed and crafted the Iowa State University mace.

THE PRESIDENTIAL CHAIN OF OFFICE



THE PRESIDENTIAL CHAIN OF OFFICE symbolizes the rich history and traditions of Iowa State University and is worn by the president.

Created by sculptor Jeanne Stevens-Sollman—the same artist who created Iowa State's mace—the presidential chain of office is bronze and silver and complements the mace. The two pieces were commissioned by University Museums and the ISU Alumni Association in 2008 and are part of University Museums' Art on Campus collection.

The front of the presidential chain of office features an image of the campanile, and Beardshear Hall's east portico (the campus home of the president) is on the back. The shoulder epaulets are the columns of Beardshear and contain the words Leadership and Service. The campanile links in the presidential chain of office contain the words Engagement, Learning, Discovery, and Access. The reverse sides of the bronze sections have low bas reliefs of corn.

ACADEMIC REGALIA



CUSTOM-DESIGNED DOCTORATE REGALIA debuted in May 2008 as part of the Iowa State University sesquicentennial celebration.

The gowns were created with emblems and colors to reflect Iowa State's tradition and to complement the hood. The fabric is cardinal gabardine with black velvet panels and chevrons edged with gold cording. The campanile adorns the two front velvet panels. An eight-sided black velvet tam with a gold silk tassel completes the official regalia.

The academic costume symbolizes the record of academic achievement of the various individuals taking part in the ceremony, and its use dates to medieval times and the famed universities of Europe and England. The unheated buildings frequented by medieval scholars were an important factor in clothing choices.

An array of caps, gowns, and hoods emerged from the centuries in Great Britain and from early years of higher education in the United States. American institutions recognized the need for a standard code and the majority of academic costumes worn now are in accordance with the general provisions of the Intercollegiate Code of 1895.

IOWA STATE UNIVERSITY'S HERITAGE

From the time it opened in 1868 as the Iowa Agricultural College and Model Farm, Iowa State University of Science and Technology has been a leader in the development of a new kind of higher education institution in the United States, the land-grant university.

Born of the soil and rooted in the fields of agriculture and engineering, these institutions were created to extend the opportunities of higher education to people of the working classes. Today, the land-grant institutions are still the "people's colleges," whose programs address the issues and problems affecting the people of the states they serve.

Land-grant institutions further revolutionized higher education in this country by introducing the concept of direct service to the people. Today, the land-grant institutions have a three-part mission: teaching, research, and service. It was at Iowa State University where the programs were conceived and molded to carry out this new service mission.

The Iowa General Assembly established the Iowa Agricultural College in 1858, but it would not open for another ten years. In 1862, Iowa became the first state in the nation to formally adopt the Morrill Act that established land-grant colleges and universities. In 1864, the yet-to-be-opened Iowa Agricultural College was designated as Iowa's land-grant institution.

Iowa State University embodied then and embodies today the land-grant concept of higher education: open to all regardless of gender, ethnic background, or social class; committed to providing students with an education not only in the classics but also in science, engineering, agriculture, and military tactics; and dedicated to teach students the practical applications of their knowledge. Iowa State was the first land-grant college to be coeducational from the beginning. Today, Iowa State is recognized among the top colleges and universities in the nation that provide well-prepared graduates. Employers say that Iowa State graduates know how to apply their knowledge as they begin their careers, making Iowa State's career fairs some of the largest in the nation. Students learn through internships and co-op opportunities, undergraduate research programs, and study abroad.

IOWA STATE UNIVERSITY'S HERITAGE

As early as 1870, Iowa State faculty and staff were involved in extending the benefits of the institution's research to the people of the state through Farmers' Institutes. These were the forerunners of the modern Cooperative Extension Service, established at land-grant universities as the result of the Smith-Lever Act of 1914. Iowa State faculty and staff wrote and worked for the passage of the Hatch Act of 1887 that established agricultural experiment stations at land-grant universities to do research on issues critical to each state's citizenry.

Iowa State was the first public institution to establish a school of veterinary medicine. It was the first institution to offer college courses in home economics, forestry, agricultural studies, and teacher education. It was at Iowa State where the electronic digital computer (described as the most important technological development of the twentieth century) was invented, and where the corn hybrids responsible for nearly half of all varieties grown in this country were developed.

Today, Iowa State University has little resemblance to the small agricultural college that emerged from the Iowa prairie.

Its more than 175 major buildings spread across 1,770 acres form one of the most beautiful campuses in the nation. Inside these buildings are people who are as dedicated to the land-grant mission as were the academic pioneers of the nineteenth century. With supercomputers, nanotechnology, and high-tech laboratories, Iowa State University is among the most technologically advanced institutions in the nation.

The modern Iowa State University is dedicated to revitalizing the land-grant mission. With the same spirit of innovation that led to the development of the Cooperative Extension Service and the Agricultural Experiment Station system, Iowa State faculty and staff are developing research and technology transfer programs that will serve Iowa and the nation well into the future. Iowa State has been referred to in a national study as a technology transfer powerhouse.

IOWA STATE UNIVERSITY'S HERITAGE

Iowa State University is taking a leading role in such critical areas as plant sciences, agricultural biotechnology, information sciences, materials science, agricultural production and product development, food and nutrition sciences, protection of the environment, design and communities, and many other areas. At the same time, it is an institution that is exceptionally student-focused, with sensitivity for the need to provide a well-rounded and broad-based academic program for all its students and an out-of-the-classroom experience second to none.

Iowa State's programs are designed to prepare graduates for leadership roles in an increasingly global community, with emphases on effective communication skills and knowledge of other nations' peoples and cultures.

More than ever, Iowa State University is a university with its roots planted firmly in the rich Iowa soil and its eyes focused clearly on the future with a mission to create, share, and apply knowledge to make Iowa and the world a better place.

INSTALLATION PLANNING COMMITTEE

OLIVIA M. A. MADISON, CHAIR

Professor of Library, Dean of the University Library

MARK J. CHIDISTER

Associate Professor, Integrated Studio Arts

CAROLE A. CUSTER

Director, University Marketing

LAURA J. DOERING

Registrar

MICHAEL GOLEMO

Professor and Chair, Music and Theatre

TAHIRA K. HIRA

Senior Policy Adviser, President's Office

JOHN MCCARROLL

Executive Director, University Relations

JOLENE S. HILLEMANN

Administrative Support
Administrative Specialist, University Library

THE INSTALLATION PLANNING COMMITTEE
EXTENDS SPECIAL THANKS TO:

BIOCENTURY RESEARCH FARM

BIOECONOMY INSTITUTE

COLLEGE OF DESIGN

DEPARTMENT OF MUSIC AND THEATRE

EVERTS FLOWERS

GOVERNMENT OF THE STUDENT BODY

GRADUATE AND PROFESSIONAL STUDENT SENATE

IOWA STATE CENTER

IOWA STATE UNIVERSITY ALUMNI ASSOCIATION

IOWA STATE UNIVERSITY FOUNDATION

ISU DINING

ISU GAFFER'S GUILD

ISU PRINTING AND COPY SERVICES

LECTURES PROGRAM

OFFICE OF THE PRESIDENT

PUSH BRANDING AND DESIGN

UNIVERSITY HUMAN RESOURCE SERVICES

UNIVERSITY INFORMATION TECHNOLOGY

UNIVERSITY LIBRARY DEAN'S
OFFICE AND SPECIAL COLLECTIONS

UNIVERSITY MARKETING

UNIVERSITY NEWS SERVICE

UNIVERSITY REGISTRAR'S OFFICE

UNIVERSITY RELATIONS

IOWA STATE UNIVERSITY HONORABLE GUESTS,
FRIENDS, FACULTY, STAFF, AND STUDENTS
FOR YOUR ATTENDANCE

