

YALAMI

1924
VEISHEA
PRESENTS

YALAMI

*To Sara S. Thompson
Homer Huntoon*

A MUSICAL PLAY

by

RUTH ELAINE WILSON

AND

HOMER HUNTOON

GRANNY
FACINATION
MA JONG AND PA JONG
G'ET? NO! G'EW?
HI-HORSE
YALAMI

PRESENTED
AT
IOWA STATE COLLEGE

UNDER THE
DIRECTION OF
LESTER RAINES

*Sincerely yours,
Ruth Elaine Wilson*

YALAMI

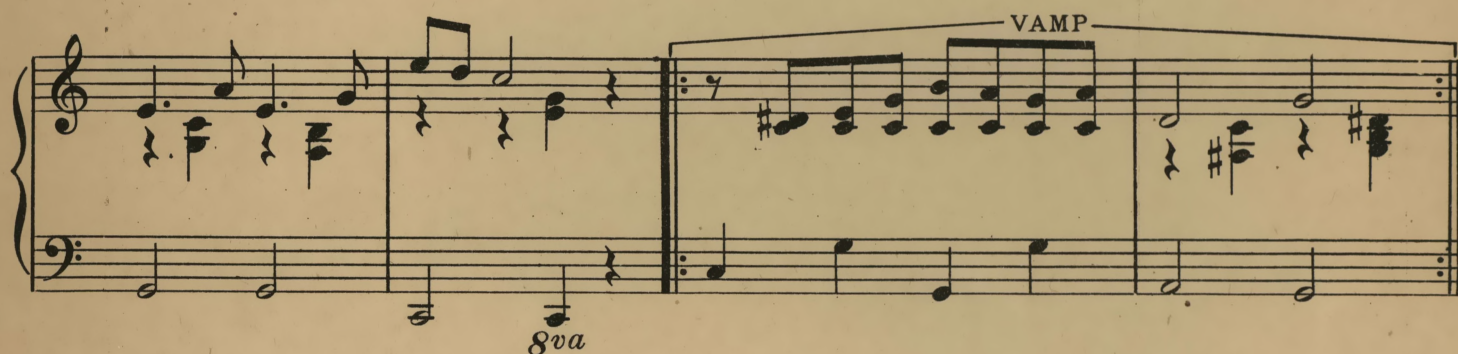
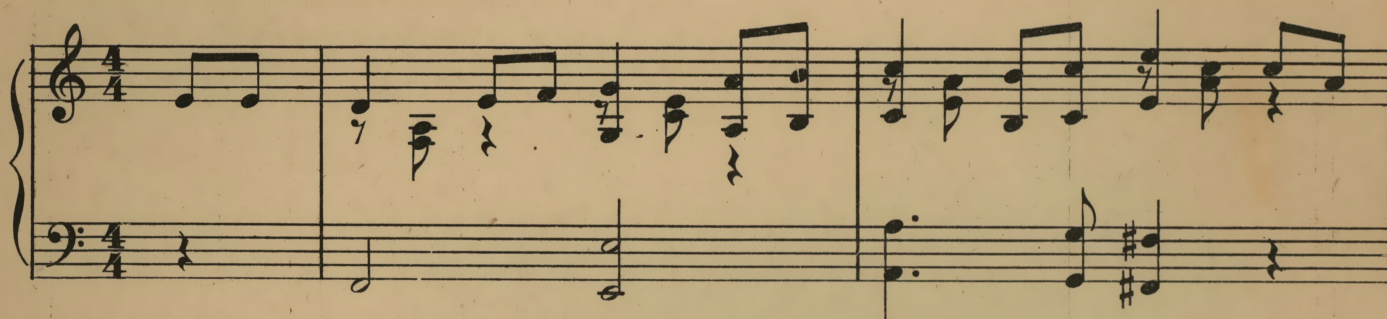
means

"You Love Me"

(Fox trot)

RUTH ELAINE WILSON

HOMER HUNTOON



VOICE

In Eg-ypt when the stars are gleam - ing and al-mond eyes are warm-ly
 In nor-man-dy a-long in spring - time when maid-ens turn their thots to

Piano accompaniment for the voice part, continuing the harmonic support with a consistent eighth-note pattern in the right hand and quarter-note accompaniment in the left hand.

beam - ing When sleep-y lot - us flow'rs per - fume the eve-ning hours
ring time When skies are ten - der blue and breez - es sly - ly woo

He takes her hand and says, "sure - ly you love me" Be-neath the feath - er - y
An-oth - er lov - er true whis-pers "Ya - lam - i?" And as he kiss - es her

palm tree she hangs her head and whis-pers "yes."
fond - ly she says that she'll be his some day.

CHORUS

Ya - la - mi means "you love me" Ya -

la - mi means "you love me" In France, in Spain, and

in old sun - ny It - al - y They may say it dif - frent - ly The

mean - ing does - n't change you see, Your paw asked maw "Ya - la - mi?" And

you have asked it too, may - be. Oh! it's

old but it's new when it's first told to you, and you

an - swer, "I love you too!" Yes it's old but it's new when it's

first told to you For Ya - la - mi means "You love me!"

Veishea is the incarnation or expression of the spirit of Iowa State College. Where formerly divisional shows, celebrations and carnivals existed, now flourishes Veishea. Small tho the beginnings were and slow the idea to crystalize into concrete organization, all Iowa State men and women are coming to know and enjoy Veishea. And not only Iowa State men and women but all Iowans from Illinois to Nebraska, from Minnesota to Missouri will know Veishea and look forward each year to the month of May when their college will throw open her doors and bid them welcome to Veishea.

Veishea is an annual all-college exposition occuring in May under the direction and management of undergraduates. The effort is made thru the open-houses, shows, parades, exhibits and games to present a truly representative demonstration of Iowa State life and spirit. This song was presented as a part of the 1924 Veishea all college musical comedy "Yalami."