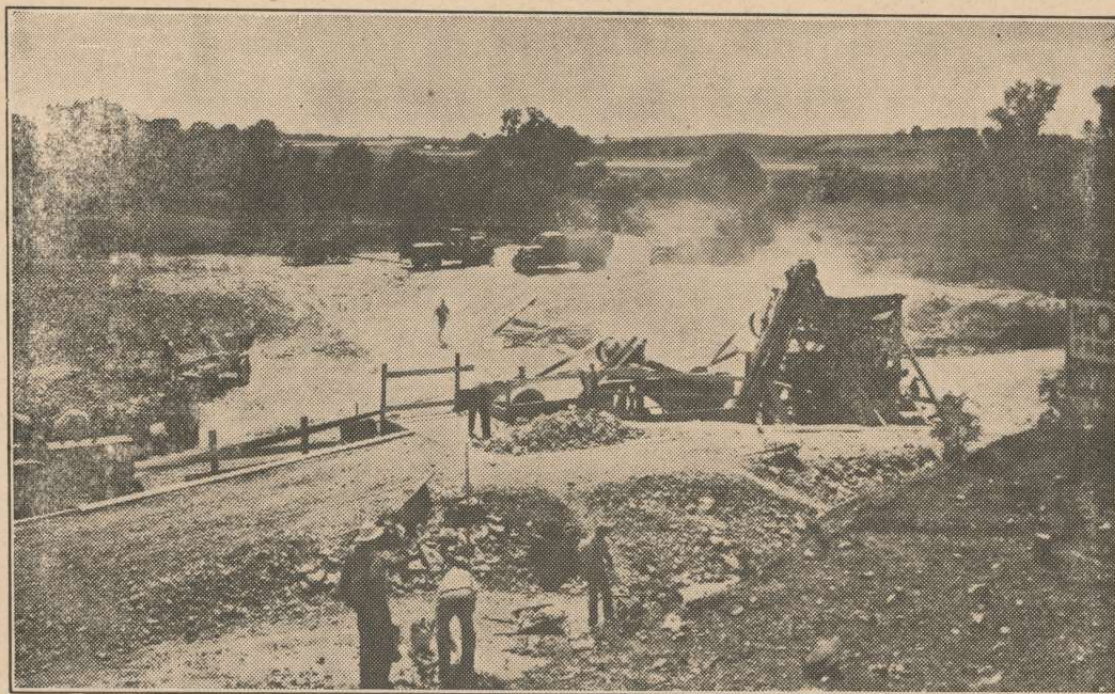


Quarrying Iowa Limestone for Roads



Nature's bountiful Iowa limestone deposits have made county road improvement programs less difficult and more economical than in many states. This Lewis, Cass County, Iowa, operation of WPA is typical of about 60 such quarry projects in the state. Preliminary stripping, and the quarrying, crushing, hauling, spreading or storing of rock has provided needed employment for hundreds of local men through the summer.

One of the first essentials for carrying out any road improvement is a neighboring source of supply of raw materials. Fortunately Iowa is prolific in suitable rock formations, and better country roads and more of them is the result of the foresight and activity of county boards of supervisors statewide who have sponsored such quarry projects and enlisted the co-operation of the works progress administration in their equipment and operation.

Thousands of men and many fleets of powerful trucks are engaged in such practical WPA quarry work with the result that their crushed rock product will be spread on approximately 3,580 miles of Iowa secondary and farm to market roads this year, while thousands of cubic yards have been prepared and stored for future use on planned improvements.

Such practical operations are a credit to each county and its officials who make them possible. They represent one of the substantial accomplishments of WPA and a fundamental factor in the splendid program of bringing Iowa out of the mud by creating all weather roads throughout the state.