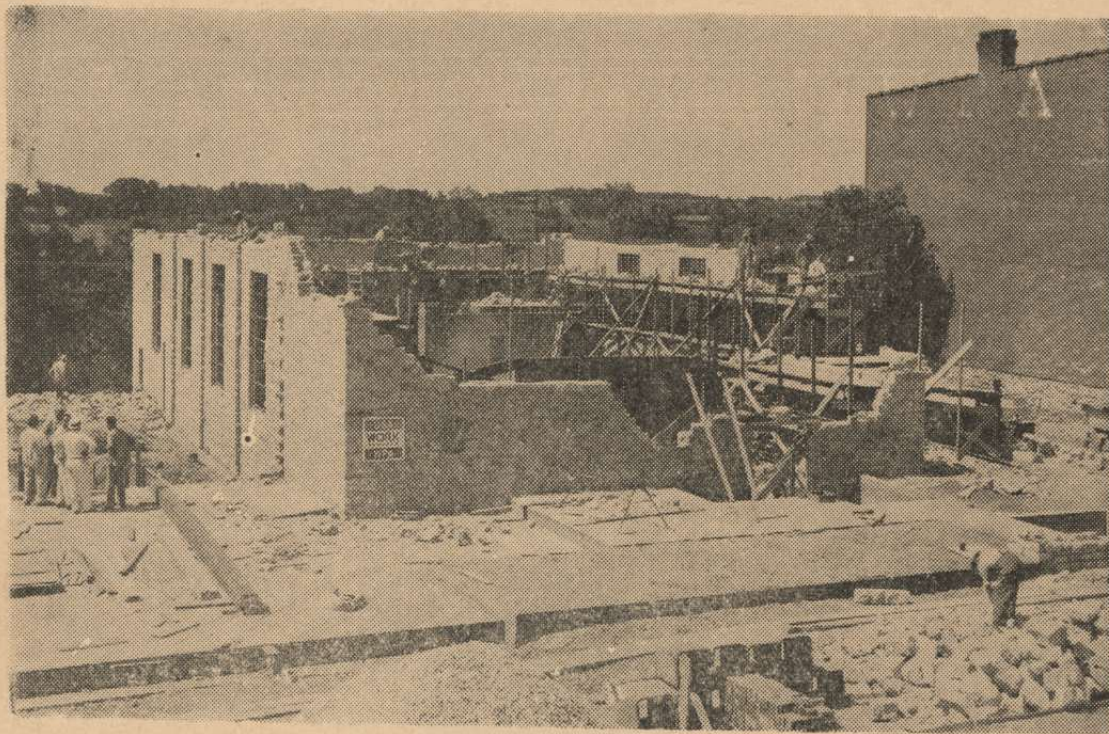


39 Municipal Buildings W P A Projects



This is a view of the Memorial Building at Cascade, Dubuque county, taken during the course of construction. It is built of native limestone, 80x120 feet deep and when completed will house the municipal office, fire station, post office and American Legion rooms. Attractively designed, it will be a community project of which Cascade and WPA can well be proud.

Thirty-nine municipal buildings have either been constructed or remodeled to date by communities statewide which have sponsored such an improvement in co-operation with the Works Progress Administration.

Then too, forty-nine schools and fifty-one other public buildings such as city, state and federal structures, shelter houses and park buildings have been completed or are now in the process of construction by workmen engaged in many practical occupations on these WPA projects.

Employment of those with dependents who would otherwise have to be on relief rolls has prompted local authorities to avail themselves of federal financing aid by sponsoring such worthy projects through WPA.

Long after the present economic condition is forgotten, the majority of these structures will continue to serve the public and prove the wisdom of those local officials and organizations which planned and sponsored such construction.