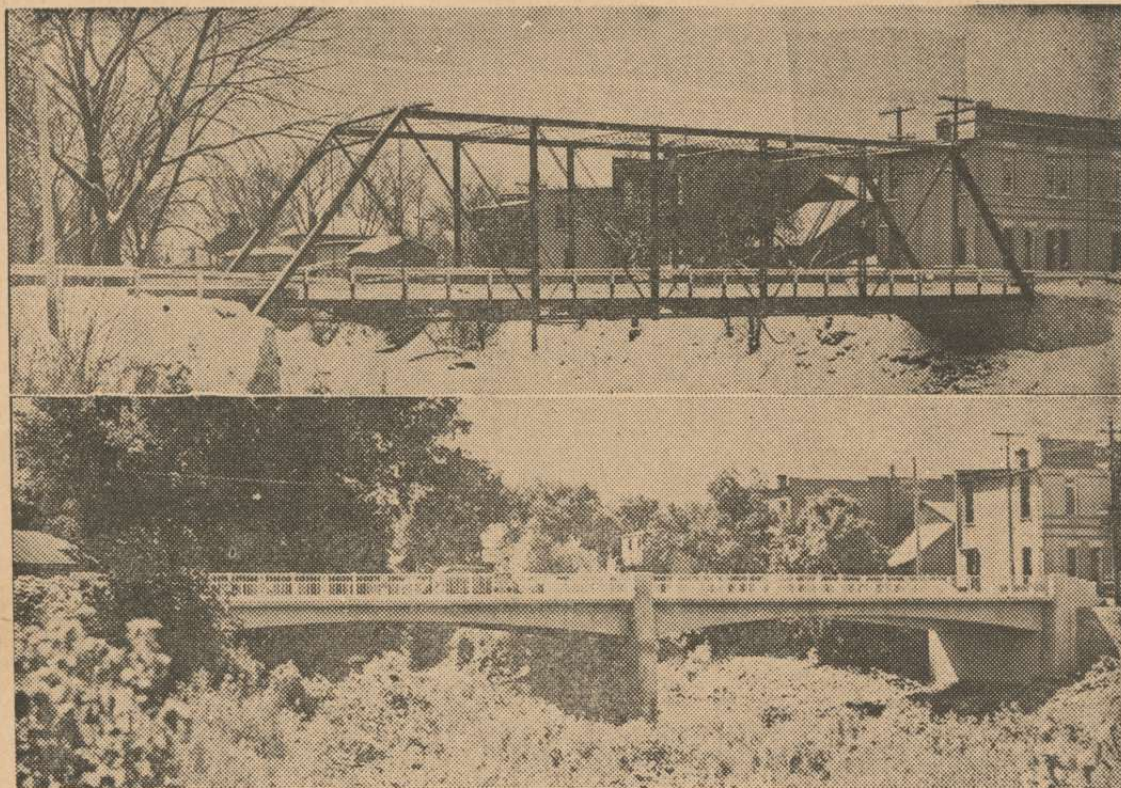


## W P A Builds 693 Iowa Bridges



The imposing new double-span re-inforced concrete bridge shown just above has been in service since July across the Iowa river at Alden, west of Iowa Falls in Hardin County, having replaced the old-type single-span narrow steel bridge also pictured. Like all similar improvements it is a credit to the community, the county and local authorities which sponsored the project, and the WPA workmen who actually constructed it.

Bridge building has been one of the very noticeable WPA construction projects in the state because the motoring public has had to detour the various locations and so was made somewhat conscious of the extent of the improvement program being carried out, the number of men employed, etc.

Every Iowan knows that creeks and streams traverse almost every county on their way to its large rivers or to the Missouri or Mississippi, but almost anyone is astounded at the magnitude of the work of this nature which has been undertaken, much of which is finished.

Imagine any organization building 693 new bridges of all kinds from a heavy plank type across a minor stream to such a fine structure as is illustrated above. Yet that is exactly what is being done as one activity of the work progress administration in Iowa.

In addition there have been 936 culverts constructed in connection with the improved county road building program, all of which means better driving conditions at all seasons of the year.