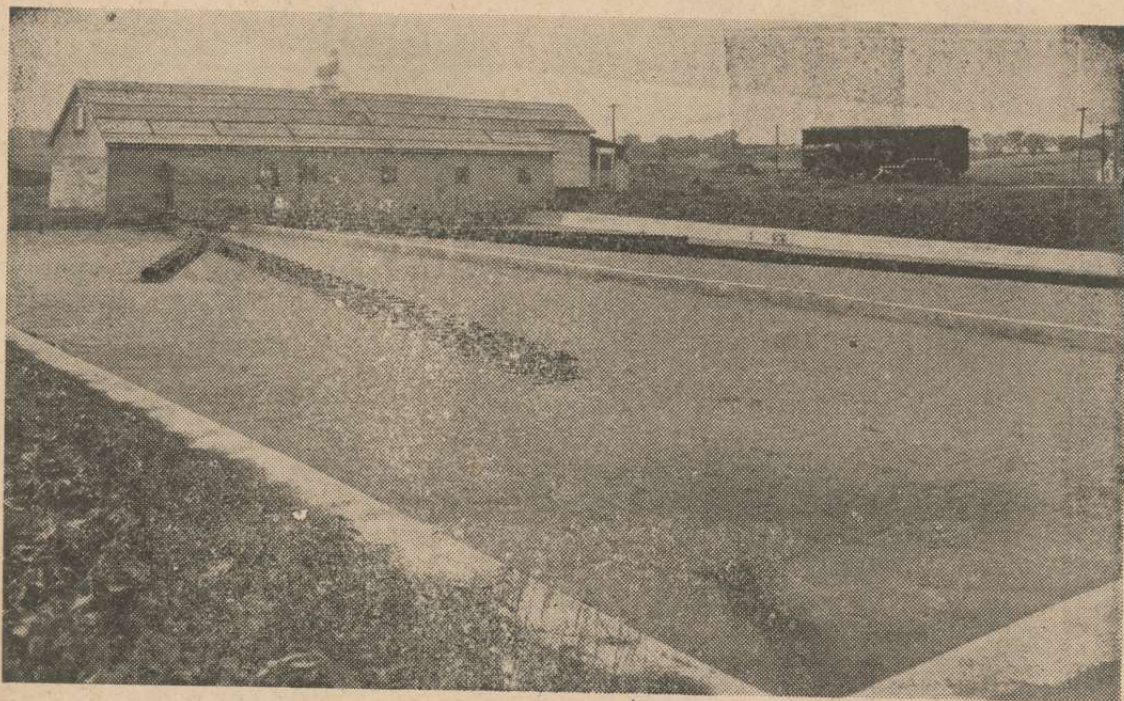


## Sewage Disposal Plants Built by W P A



One of the most important sanitation problems of any community is solved with the construction and operation of proper sewage disposal facilities. This view is of such a plant at Ute, Monona county, which has been enlarged and repaired by WPA for efficient operation beginning this fall. Similar plants have been sponsored by local authorities and constructed in Grinnell, Charter Oak, Spirit Lake and Centerville.

Outstanding in its importance as a guard of the good health of members of any community is the building and improvement of public sewage disposal plants and construction of adequate water supply. Eighteen Iowa towns have already benefited by citing such needs and sponsoring such projects through co-operation of the Works Progress Administration.

In this connection it is interesting to note that more than 57 miles of sewer and water mains have been laid in towns and cities throughout Iowa by WPA, thereby adding greatly to their value as desirable communities in which to live.

Such essential construction work by WPA has meant the employment of scores of local workmen otherwise without the means of livelihood and subject to relief. These projects have provided worthwhile tasks for these certified willing workers, providing incomes with which to maintain the family group and lighten the local relief load.