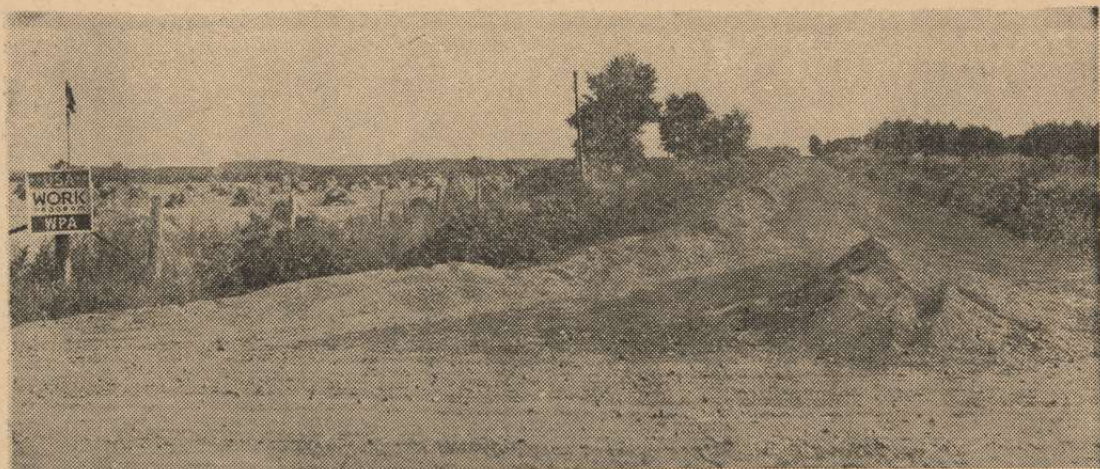


Rural Roads Built and Improved by W P A



These actual views tell the story of what's being done by several thousand WPA workers to build and improve secondary "Farm-to-Market" roads in Iowa. County authorities who had to provide jobs for distressed but able citizens certified as relief workers, planned, sponsored and have already seen 4254 miles of such county roads built or improved by WPA! Curves have been widened, hills leveled, mud roads graded, ditched, drained, bridged and surfaced with crushed rock or gravel in most of the counties in the state, providing vastly better driving on hundreds of "Farm-to-Market" roads equal in length to fourteen highways across the state from river to river.